

UNITED STATES  
DEPARTMENT OF THE INTERIOR  
BUREAU OF LAND MANAGEMENT

RECEIVED

APPLICATION FOR PERMIT TO DRILL, DEEPEN, OR PLUG BACK

2004 SEP 21 11:21:13

1a. Type of Work DRILL	5. Lease Number SF-079492-C Unit Reporting Number MV-8910010510 DK-891001051B	
1b. Type of Well GAS	6. If Indian, All. or Tribe	
2. Operator <b>BURLINGTON</b> RESOURCES Oil & Gas Company	7. Unit Agreement Name San Juan 27-5 Unit	
3. Address & Phone No. of Operator PO Box 4289, Farmington, NM 87499 (505) 326-9700	8. Farm or Lease Name San Juan 27-5 Unit 9. Well Number #98N	
4. Location of Well 2290' FNL, 1920' FWL Latitude 36° 34.4780'N, Longitude 107° 19.7713'W	10. Field, Pool, Wildcat Blanco Mesaverde/Basin Dakota 11. Sec., Twn, Rge, Mer. (NMPM) F Sec. 14, T27N, R05W API # 30-039- 27630	
14. Distance in Miles from Nearest Town 41.4 miles to Blanco Post Office	12. County Rio Arriba ✓	13. State NM
15. Distance from Proposed Location to Nearest Property or Lease Line 1920'	17. Acres Assigned to Well 320 W/2 - MV 320 W/2 - DK	
16. Acres in Lease	18. Distance from Proposed Location to Nearest Well, Drlg, Compl, or Applied for on this Lease 931'	
19. Proposed Depth 7910'	20. Rotary or Cable Tools Rotary	
21. Elevations (DF, FT, GR, Etc.) 6646' GR	22. Approx. Date Work will Start	
23. Proposed Casing and Cementing Program See Operations Plan attached		
24. Authorized by: <u>Joni Clark</u> Regulatory Specialist	<u>2/24/04</u> Date	

PERMIT NO. \_\_\_\_\_ APPROVAL DATE \_\_\_\_\_  
APPROVED BY [Signature] TITLE AFM DATE 9-13-04

Archaeological Report attached

Threatened and Endangered Species Report attached

NOTE: This format is issued in lieu of U.S. BLM Form 3160-3

Title 18 U.S.C. Section 1001, makes it a crime for any person knowingly and willfully to make to any department or agency of the United States any false, fictitious or fraudulent statements or presentations as to any matter within its jurisdiction.

DRILLING OPERATIONS AUTHORIZED ARE  
SUBJECT TO COMPLIANCE WITH ATTACHED  
"GENERAL REQUIREMENTS".

NMOCDD

This action is subject to technical and  
procedural review pursuant to 43 CFR 3165.3  
and appeal pursuant to 43 CFR 3165.4

DISTRICT I  
1625 N. French Dr., Hobbs, N.M. 88240

DISTRICT II  
811 South First, Artesia, N.M. 88210

DISTRICT III  
1000 Rio Brazos Rd., Aztec, N.M. 87410

DISTRICT IV  
2040 South Pacheco, Santa Fe, NM 87505

State of New Mexico  
Energy, Minerals & Natural Resources Department

Form C-102  
Revised August 15, 2000

Submit to Appropriate District Office  
State Lease - 4 Copies  
Fee Lease - 3 Copies

OIL CONSERVATION DIVISION  
2040 South Pacheco  
Santa Fe, NM 87505

☐ AMENDED REPORT

WELL LOCATION AND ACREAGE DEDICATION PLAT

*API Number 30-039- <b>27630</b>	*Pool Code 72319/71599	*Pool Name Blanco Mesaverde/Basin Dakota
*Property Code 7454	*Property Name SAN JUAN 27-5 UNIT	*Well Number 98N
*GRID No. 14538	*Operator Name BURLINGTON RESOURCES OIL AND GAS COMPANY LP	*Elevation 6646'

<sup>10</sup> Surface Location

UL or lot no.	Section	Township	Range	Lot Idn	Feet from the	North/South line	Feet from the	East/West line	County
F	14	27-N	5-W		2290'	NORTH	1920'	WEST	RIO ARRIBA

<sup>11</sup> Bottom Hole Location If Different From Surface

UL or lot no.	Section	Township	Range	Lot Idn	Feet from the	North/South line	Feet from the	East/West line	County
Dedicated Acres MV-W/320 DK-W/320					Joint or Infill		Consolidation Code		Order No.

NO ALLOWABLE WILL BE ASSIGNED TO THIS COMPLETION UNTIL ALL INTERESTS HAVE BEEN CONSOLIDATED  
OR A NON-STANDARD UNIT HAS BEEN APPROVED BY THE DIVISION

16

FD 3 1/4" N 87-21-44 E B.L.M. BC 2660.38' (M) 1957	FD 3 1/4" B.L.M. BC 1957
S 00-05-12 W 2679.93' (M)	2290'
1920'	LAT: 36°34.4780' N. (NAD 27) LONG: 107°19.7713' W. (NAD 27)
USA SF-079492-C	14
FD 3 1/4" B.L.M. BC 1957	

17 OPERATOR CERTIFICATION

I hereby certify that the information contained herein is true and complete to the best of my knowledge and belief

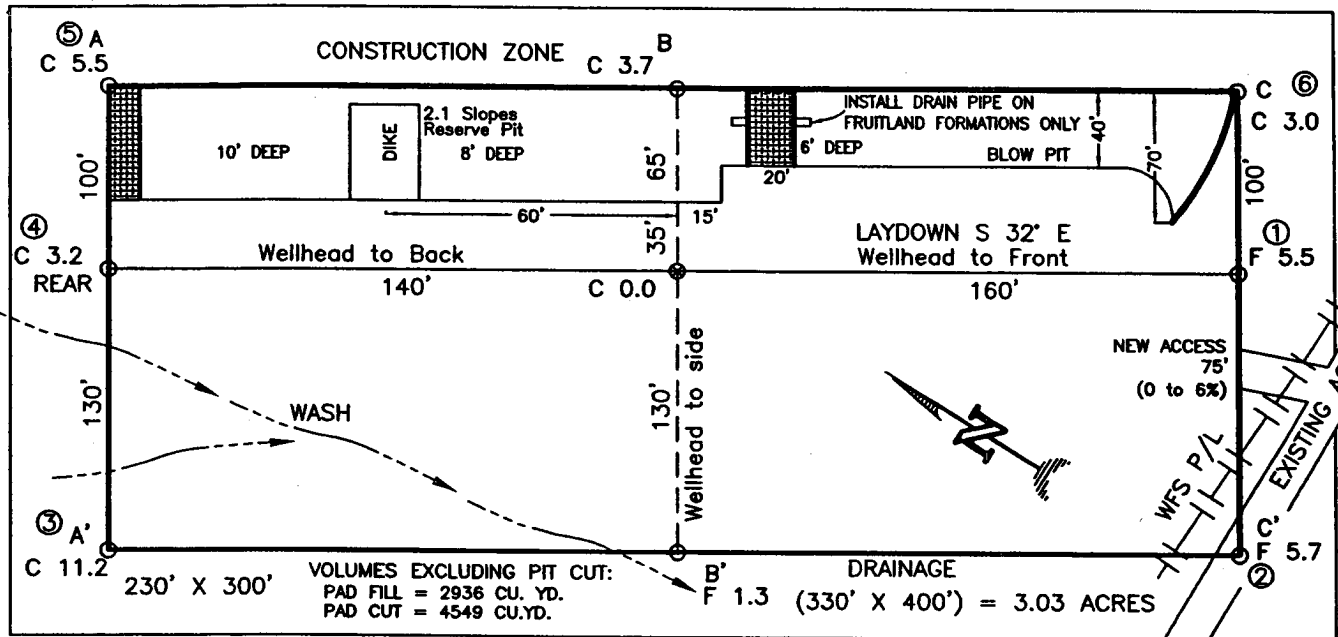
*Joni Clark*  
Signature  
Joni Clark  
Printed Name  
Regulatory Specialist  
Title  
2-24-04  
Date

18 SURVEYOR CERTIFICATION

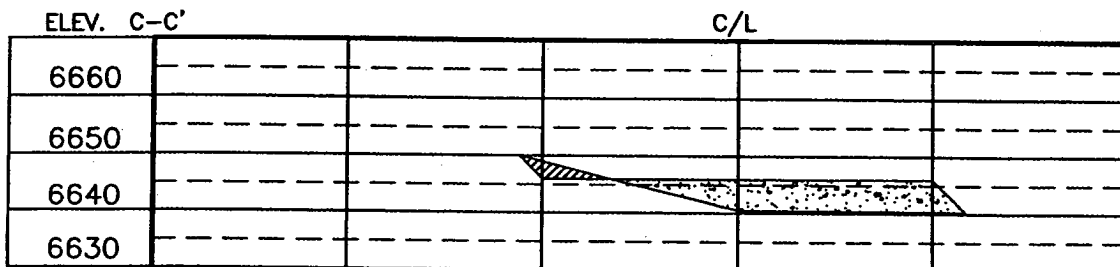
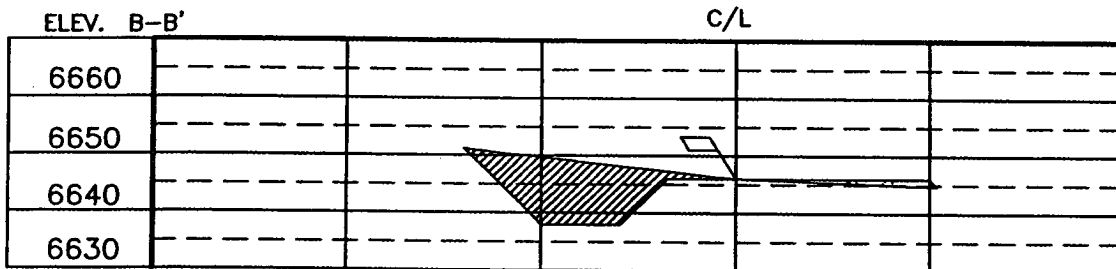
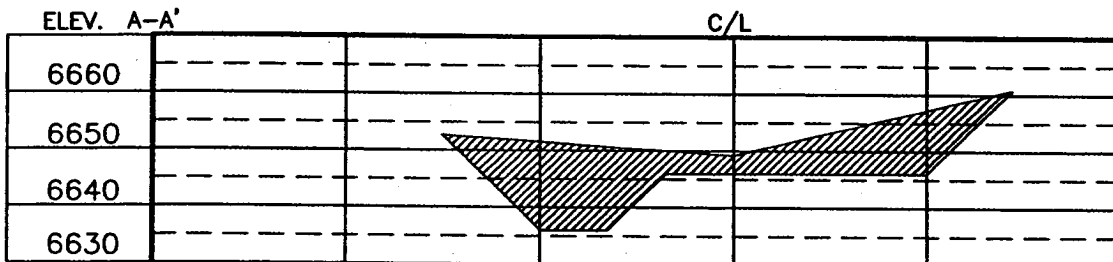
I hereby certify that the well location shown on this plat was plotted from field notes of actual surveys made by me or under my supervision, and that the same is true and correct to the best of my belief.

10 MAY 20 2003  
Date of Survey  
NEW MEXICO  
Signature and Seal of Professional Surveyor:  
14827  
14827  
Certificate Number

BURLINGTON RESOURCES OIL & GAS COMPANY LP  
 SAN JUAN 27-5 UNIT No. 98N, 2290 FNL 1920 FWL  
 SECTION 14, T-27-N, R-5-W, N.M.P.M., RIO ARriba COUNTY, NEW MEXICO  
 GROUND ELEVATION: 6646, DATE: SEPTEMBER 13, 2003



RESERVE PIT DIKE: TO BE 8' ABOVE DEEP SIDE (OVERFLOW - 3' WIDE AND 1' ABOVE SHALLOW SIDE).  
 BLOW PIT: OVERFLOW PIPE HALFWAY BETWEEN TOP AND BOTTOM AND TO EXTEND OVER PLASTIC LINER AND INTO BLOW PIT.



NOTE: CONTRACTOR SHOULD CALL ONE-CALL FOR LOCATION OF ANY MARKED OR UNMARKED BURIED PIPELINES OR CABLES ON WELL PAD AND OR ACCESS ROAD AT LEAST TWO (2) WORKING DAYS PRIOR TO CONSTRUCTION.

DRAWN BY: A.G. ROW#: BR459 CADFILE: BR459CFB DATE: 10/03/03

Daggett Enterprises, Inc.  
 Surveying and Oil Field Services  
 P. O. Box 15068 Farmington, NM 87401  
 Phone (505) 326-1772 Fax (505) 326-6019

## OPERATIONS PLAN

Well Name: San Juan 27-5 Unit #98N  
Location: 2290' FNL, 1920' FWL, Sec 14, T-27-N, R-5-W  
Rio Arriba County, NM  
Latitude 36° 34.4780'N, Longitude 107° 19.7713'W  
Formation: Blanco Mesaverde/Basin Dakota

Total Depth: 7910'

Logging Program: See San Juan 27-5 Unit Master Operations Plan

Mud Program: See San Juan 27-5 Unit Master Operations Plan

Casing Program (as listed, the equivalent, or better):

<u>Hole Size</u>	<u>Depth Interval</u>	<u>Csg. Size</u>	<u>Wt.</u>	<u>Grade</u>	<u>Cement</u>
12 1/4"	0' - 120'	9 5/8"	32.3#	H-40	113 cu.ft.
8 3/4"	0' - 3728'	7"	20.0#	J-55	834 cu.ft.
6 1/4"	0' - 7800'	4 1/2"	10.5#	J-55	569 cu.ft.
6 1/4"	7800' - 7910'	4 1/2"	11.6#	N-80	

Tubing Program: See San Juan 27-5 Unit Master Operations Plan

- The Mesaverde and Dakota formations will be completed and commingled.
- The west half of Section 14 is dedicated to the Mesaverde and to the Dakota formations in this well.
- Gas is dedicated.

Don Conigan  
Drilling Engineer

February 24, 2004  
Date

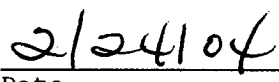
MULTI-POINT SURFACE USE PLAN

San Juan 27-5 Unit #98N

See San Juan 27-5 Unit Master Multi-point Surface Use Plan

- Anticipated pipeline facilities as shown on the attached plat from Williams Field Services.
- 75' of new road will be built.
- Water Supply from San Juan 27-5 Water Well #1 located NE/4 Section 3, T-27-N, R-5-W, New Mexico
- Surface Ownership: Bureau of Land Management
- Line pit if land owner approves
- Round corner.
- Build diversion ditch above cut slope between corners #5 and #3.
- Cut trees.
- Slopes at west side of pad 2 to 2.
- Build a diversion above cut slope between corner #5 and #6 drainage south.
- Archaeological Resources: See Archaeological Survey technical report #2003-SJC-196 from San Juan College.

  
Regulatory Specialist

  
Date