

**UNITED STATES
DEPARTMENT OF THE INTERIOR
BUREAU OF LAND MANAGEMENT**

RECEIVED

JUN 16 2011

Sundry Notices and Reports on Wells

Farmington Field Office
Bureau of Land Management1. Type of Well
GAS5. Lease Number
SF-0788766. If Indian, All. or
Tribe Name

2. Name of Operator

BURLINGTON

RESOURCES OIL & GAS COMPANY LP

7. Unit Agreement Name
Canyon Largo Unit

3. Address & Phone No. of Operator

PO Box 4289, Farmington, NM 87499 (505) 326-9700

8. Well Name & Number
Canyon Largo Unit 16

9. API Well No.

30-039-60052

4. Location of Well, Footage, Sec., T, R, M

Unit A (NENE), 810' FNL & 1180' FEL, Section 30, T25N, R7W, NMPM

10. Field and Pool
Basin Fruitland Coal11. County and State
Rio Arriba, NM

12. CHECK APPROPRIATE BOX TO INDICATE NATURE OF NOTICE, REPORT, OTHER DATA

Type of Submission

☒ Notice of Intent

Type of Action

☒ Abandonment☐ Change of Plans☐ Other -☐ Subsequent Report☐ Recompletion☐ New Construction☐ Final Abandonment☐ Plugging☐ Non-Routine Fracturing☐ Casing Repair☐ Water Shut off☐ Altering Casing☐ Conversion to Injection

13. Describe Proposed or Completed Operations

Burlington Resources requests permission to P&A the subject well per the attached procedure, current and proposed wellbore schematics.

RCVD JUN 22 '11
OIL CONS. DIV.

DIST. 3

14. I hereby certify that the foregoing is true and correct.

Signed Crystal Tafoya Crystal Tafoya

Title: Staff Regulatory Technician

Date 6/16/11

(This space for Federal or State Office use)

APPROVED BY Original Signed: Stephen Mason TitleDate JUN 22 2011

CONDITION OF APPROVAL, if any:

Title 18 U.S.C. Section 1001, makes it a crime for any person knowingly and willfully to make any department or agency of the United States any false, fictitious or fraudulent statements or representations as to any matter within its jurisdiction

NMCCD

AV

ConocoPhillips
CANYON LARGO UNIT 16
Expense - P&A

Lat 36° 22' 34.68" N

Long 107° 36' 34.848" W

PROCEDURE

Note: This project requires a NMOCD C-144 CLEZ Closed-Loop System Permit for the use of a steel tank to handle waste fluids circulated from the well and cement wash up. All cement volumes use 100% excess outside pipe and 50' excess inside pipe. The stabilizing wellbore fluid will be 8.3 ppg, sufficient to balance all exposed formation pressures. All cement will be ASTM Type II (Class B) mixed at 15.6 ppg with a 1.18 cf/sk yield.

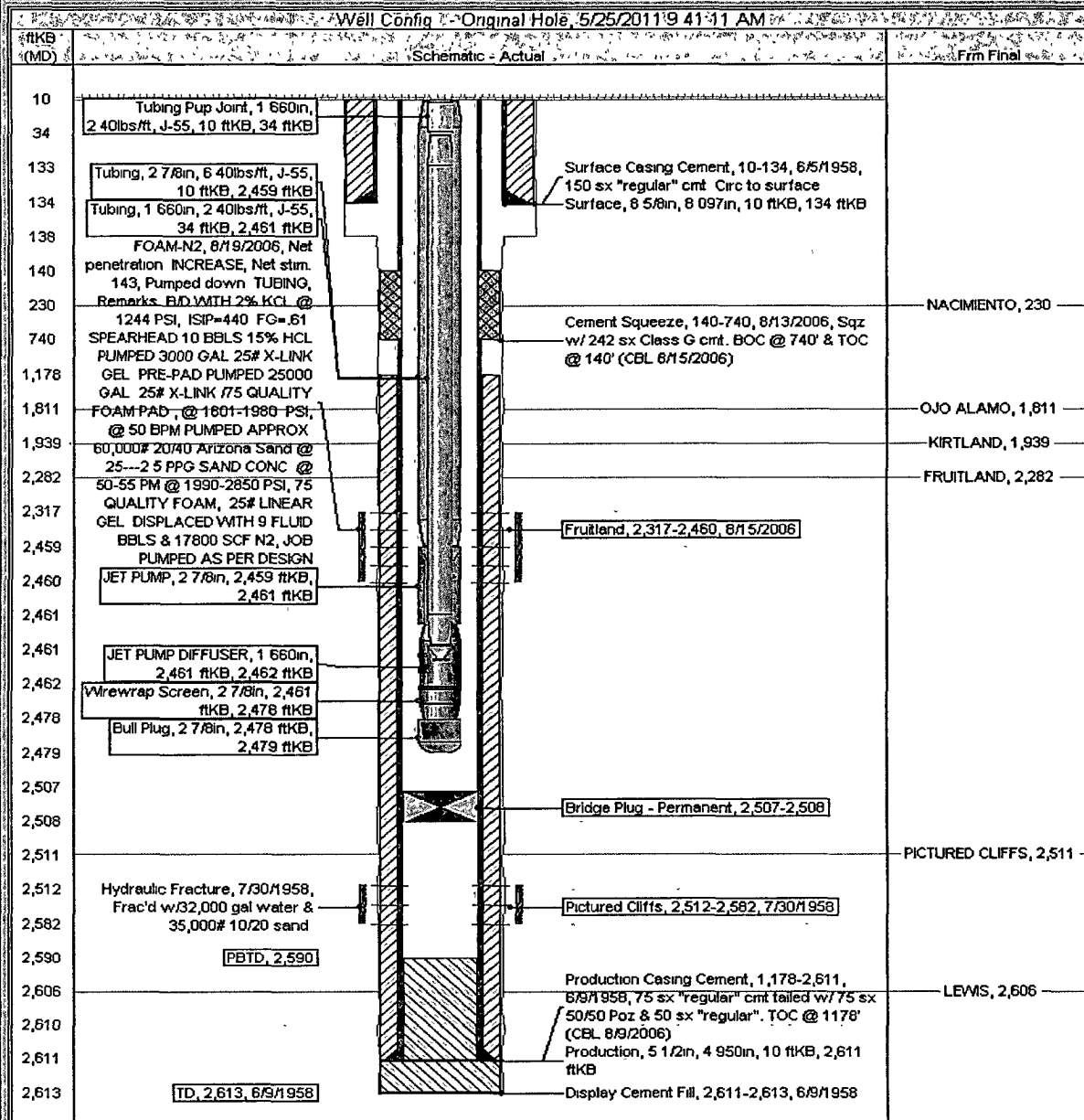
1. Hold pre-job safety meeting. Comply with all NMOCD, BLM, and COPC safety and environmental regulations. Install and test rig anchors prior to moving in rig.
2. MIRU work over rig. Check casing, tubing, and bradenhead pressures and record them in Wellview.
3. RU blow lines from casing valves and begin blowing down casing pressure. Kill well with water, if necessary.
4. ND wellhead and NU BOPE. Pressure test BOP. TOOH with 1-1/4" tubing (per pertinent data sheet).
5. PU and remove 2-7/8" tubing hanger and tag for fill, adding additional joints as needed. If fill is tagged, PU bailer and CO to PBTD. If fill is too hard or too much to bail, utilize the air package. TOOH with tubing (per pertinent data sheet). LD tubing bailer (if applicable).
6. **Plug #1 (Pictured Cliffs perforations & formation top, 2472' - 2,507')**: Mix 4 sx Class B cement and dump bail inside the casing above existing bridge plug to isolate the Pictured Cliffs perforations and formation top. WOC. Tag cement. Circulate well clean with water. TOH.
7. **Plug #2 (Fruitland Coal perforations & formation top, 2,267' - 2,167')**: RIH and set CR at 2267'. Pressure test casing to 560 psi. If casing does not test, then spot or tag subsequent plugs as appropriate. Mix 17 sx Class B cement and spot a balanced cement plug inside casing, above CR to isolate the Fruitland Coal perforations and formation top. WOC. Tag cement.
1980 1725
8. **Plug #3 (Kirtland and Ojo Alamo formation tops, 1,989' - 1,761')**: Mix 22 sx Class B cement and spot a balanced cement plug inside casing to isolate the Kirtland and Ojo Alamo formation tops. TOH.
9. **Plug #4 (Nacimiento, Surface casing shoe and surface plug, 280' - Surface)**: Perforate 3 HSC holes at 135'. Establish circulation out bradenhead with water and circulate BH annulus clean. Mix 48 sx cement and spot a balanced plug from 280' to 130' then circulate cement through the squeeze holes until good cement is circulated out of the bradenhead. Continue to spot a balanced plug to surface. TOH and LD tubing. Shut in well and WOC.
10. Nipple down BOP and cut off casing below the casing flange. Install P&A marker with cement to comply with regulations. Rig down, move off location, cut off anchors, and restore location to its natural state.

ConocoPhillips

Current Schematic

Well Name: CANYON LARGO UNIT #16

API/ UWI	Surface Legal Location	Field Name	License No	State/ Province	Well Configuration Type	Edit
3003960052	30-025N-007W	BALLARD PG GAS	60050	NEW MEXICO		
Ground Elevation (ft)	Original KB/RT Elevation (ft)	KB- Ground Distance (ft)	KB-Casing Flange Distance (ft)	KB-Tubing Hanger Distance (ft)		
6,915.00	6,925.00	10.00	6,925.00	6,925.00		



ConocoPhillips

Proposed Schematic

Well Name: CANYON LARGO UNIT #16

API/OWI 3003960052	Surface Legal Location 30-025N-007W	Field Name BALLARD FC-GAS	License No 80060	State/Province NEW MEXICO	Well Configuration Type Edit
Ground Elevation (ft) 6,915.00	Original PRT Elevation (ft) 6,925.00	IS-Grout Distance (ft) 10.00	IS-Casing Hanger Distance (ft) 6,925.00	IS-Grout Distance (ft) 6,925.00	IS-Grout Distance (ft) 6,925.00

Well Config - Original Hole: 1/1/2020

ftKB (MD)	From Final	Schematic - Actual
10		
34		
133		
134		
135		
138		
140		
230	NACIMIENTO, 230	
280		
740		
1,178		
1,761		
1,811	OJO ALAMO, 1,811	
1,939	KIRTLAND, 1,939	
1,989		
2,167		
2,267		
2,268		
2,282	FRUITLAND, 2,282	
2,317		
2,459		
2,460		
2,461		
2,461		
2,462		
2,472		
2,478		
2,479		
2,507		
2,508		
2,511	PICTURED CLIFFS, 2,511	
2,512		
2,582		
2,590		
2,606	LEWIS, 2,606	
2,610		
2,611		
2,613		

Surface, 8 5/8 in, 8 097 in, 10 ftKB, 134 ftKB

Surface Casing Cement, 10-134, 6/5/1958, 150 sx "regular" cmt Circ to surface
Plug #4 Squeeze Perfs, 135, 1/1/2020
Plug #4, 10-140, 1/1/2020
Plug #4, 10-280, 1/1/2020, Mix 48 sx cement and spot a balanced plug from 280' to 130' then circulate cement through the squeeze holes until good cement is circulated out of the bradenhead
Cement Squeeze, 140-740, 6/13/2006, Sqz w/ 242 sx Class G cmt BOC @ 740' & TOC @ 140' (CBL 8/15/2006)

Cement Retainer, 2,267-2,268
FOAM-N2, 8/19/2006, Net penetration. INCREASE, Net stim. 143, Pumped down TUBING, Remarks B/D WITH 2% KCL @ 1244 PSI, ISIP=440 FQ= 61
SPEARHEAD 10 BBLS 15% HCL PLUMPED 3000 GAL 25# X-LINK GEL PRE-PAD PUMPED 25000 GAL 25# X-LINK /75 QUALITY FOAM PAD, @ 1601-1980 PSI, @ 50 BPM PUMPED APPROX 60,000# 20/40 Arizona Sand @ 25---2.5 PPG SAND CONC. @ 50-55 PM @ 1990-2850 PSI, 75 QUALITY FOAM, 25# LINEAR GEL. DISPLACED WITH 9 FLUID BBLS & 17800 SCF N2, JOB PUMPED AS PER DESIGN

Plug #3, 1,761-1,989, 1/1/2020, Mix 32 sx Class B cement and spot a balanced cement plug inside casing to isolate the Kirtland and Ojo Alamo formation tops
Plug #2, 2,167-2,267, 1/1/2020, Mix 17 sx Class B cement and spot a balanced cement plug inside casing, above CR to isolate the Fruitland Coal perforations and formation top

Fruitland, 2,317-2,460, 8/15/2006

Bridge Plug - Permanent, 2,507-2,508

Plug #1, 2,472-2,507, 1/1/2020, Mix 4 sx Class B cement and dump ball inside the casing above existing bridge plug to isolate the Pictured Cliffs perforations and formation top

Hydraulic Fracture, 7/30/1958, Frac'd w/ 32,000 gal water & 35,000# 10/20 sand
PBD, 2,590

Pictured Cliffs, 2,512-2,582, 7/30/1958

Production, 5 1/2 in, 4 950 in, 10 ftKB, 2,611 ftKB
TD, 2,613, 6/9/1958

Production Casing Cement, 1,178-2,611, 6/9/1958, 75 sx "regular" cmt tailed w/ 75 sx 50/50 Poz & 50 sx "regular". TOC @ 1178' (CBL 8/9/2006)
Display Cement Fill, 2,611-2,613, 6/9/1958

**UNITED STATES DEPARTMENT OF THE INTERIOR
BUREAU OF LAND MANAGEMENT
FARMINGTON DISTRICT OFFICE
1235 LA PLATA HIGHWAY
FARMINGTON, NEW MEXICO 87401**

Attachment to notice of
Intention to Abandon:

Re: Permanent Abandonment
Well: 16 Canyon Largo Unit

CONDITIONS OF APPROVAL

1. Plugging operations authorized are subject to the attached "General Requirements for Permanent Abandonment of Wells on Federal and Indian Lease."

2. Farmington Office is to be notified at least 24 hours before the plugging operations commence (505) 599-8907.

3. The following modifications to your plugging program are to be made.

a) Place the Kirtland/Ojo Alamo plug from 1980' – 1725'.

b) Since the top of cement behind the 7" casing is 54' cement would be required to be placed 50' to surface

You are also required to place cement excesses per 4.2 and 4.4 of the attached General Requirements.

Office Hours: 7:45 a.m. to 4:30 p.m.