

**UNITED STATES
DEPARTMENT OF THE INTERIOR
BUREAU OF LAND MANAGEMENT**

RECEIVED**JUN 27 2011**

Sundry Notices and Reports on Wells

Farmington Field Office
Bureau of Land Management

1. Type of Well
GAS

2. Name of Operator
BURLINGTON
RESOURCES OIL & GAS COMPANY LP

3. Address & Phone No. of Operator

PO Box 4289, Farmington, NM 87499 (505) 326-9700

4. Location of Well, Footage, Sec., T, R, M

Unit L (NWSW), 1700' FSL & 990' FWL, Section 33, T27N, R9W, NMPM

5. Lease Number
SF-078081
6. If Indian, All. or
Tribe Name

7. Unit Agreement Name
Huerfanito Unit

8. Well Name & Number
Huerfanito Unit 31

9. API Well No.
30-045-06132

10. Field and Pool
Ballard Pictured Cliffs

11. County and State
San Juan, NM

12. CHECK APPROPRIATE BOX TO INDICATE NATURE OF NOTICE, REPORT, OTHER DATA

Type of Submission

☒ Notice of Intent

☐ Subsequent Report

☐ Final Abandonment

Type of Action

☒ Abandonment

☐ Recompletion

☐ Plugging

☐ Casing Repair

☐ Altering Casing

☐ Change of Plans

☐ New Construction

☐ Non-Routine Fracturing

☐ Water Shut off

☐ Conversion to Injection

☐ Other -

13. Describe Proposed or Completed Operations

Burlington Resources requests permission to P&A the subject well per the attached procedure, current and proposed wellbore schematic.

14. I hereby certify that the foregoing is true and correct.

Signed Crystal Tafoya Crystal Tafoya

Title: Staff Regulatory Technician

Date 6/27/11

(This space for Federal or State Office use)

APPROVED BY Original Signed: Stephen Mason Title

Date JUL 01 2011

CONDITION OF APPROVAL, if any:

Title 18 U.S.C. Section 1001, makes it a crime for any person knowingly and willfully to make any department or agency of the United States any false, fictitious or fraudulent statements or representations as to any matter within its jurisdiction

NMOCD *Ar*

ABANDONMENT PROCEDURE

June 20, 2011

Huerfanito Unit 31 (PC)

Aztec Pictured Cliffs
1700' FSL and 990' FWL, Unit L Section 033, T27N, R009W
San Juan County, New Mexico / API 30-045-06132
Lat: 36° 31' 44.58" N / Long: 107° 47' 55.464" W NAD 27

Note: All cement volumes use 100% excess outside pipe and 50' excess inside. The stabilizing wellbore fluid will be 8.3 ppg, sufficient to balance all exposed formation pressures. All cement will be Class B, mixed at 15.6 ppg with a 1.18 cf/sx yield.

1. This well has coiled tubing and will require a coil tubing unit to spool out the tubing before plugging operations commence.
2. This project requires a NMOCD C-144 CLEZ Closed-Loop System Permit for the use of an A-Plus steel tank to handle waste fluids circulated from the well and cement wash up.
3. Rods: Yes ☐, No ☒, Unknown ☐
Tubing: Yes ☒, No ☐, Unknown ☐ Size 1 1/4", Length 2317'
Packer: Yes ☐, No ☒, Unknown ☐ Type
If this well has rods or a packer, then modify the work sequence in step #2 as appropriate.

4. ¹⁹⁶² Plug #1 (PC perforations and top: 2236' – ~~2030'~~): Perforate 3 squeeze holes at 2236'. Establish rate into squeeze holes if casing tested. Set cement retainer at 2225'. Pressure test tubing to 1000 PSI. Pressure test casing to 800#. *If casing does not test, then spot or tag subsequent plugs as appropriate.* Mix 27 sxs Class B cement, squeeze 20 sxs outside casing and leave 7 sxs inside to cover the Pictured Cliffs perforations. PUH.
5. ^{1619 1326} Plug #2 (Kirtland and Ojo Alamo top: ~~1602'~~ – ~~1350'~~): Perforate 3 squeeze holes at ¹⁶¹⁹1602'. Establish rate into squeeze holes if casing tested. Set cement retainer at ^{1552'}1552'. Mix 108 sxs Class B cement, squeeze 99 sxs outside casing and leave 9 sxs inside to cover the Kirtland and Ojo Alamo tops. PUH.
6. Plug #3 (8.5/8" Surface casing shoe, 153' to Surface: 153' – 8'): Perforate 3 squeeze holes at 153'. Establish circulation out bradenhead with water and circulate the BH annulus clean. Mix 61 sxs Class B cement, squeeze 55 sxs outside casing and leave 6 sxs inside to cover casing shoe and surface. PUH. Shut in well and WOC.
7. ND BOP and cut off wellhead below surface casing flange. Install P&A marker with cement to comply with regulations. RD, MOL and cut off anchors. Restore location per BLM stipulations.

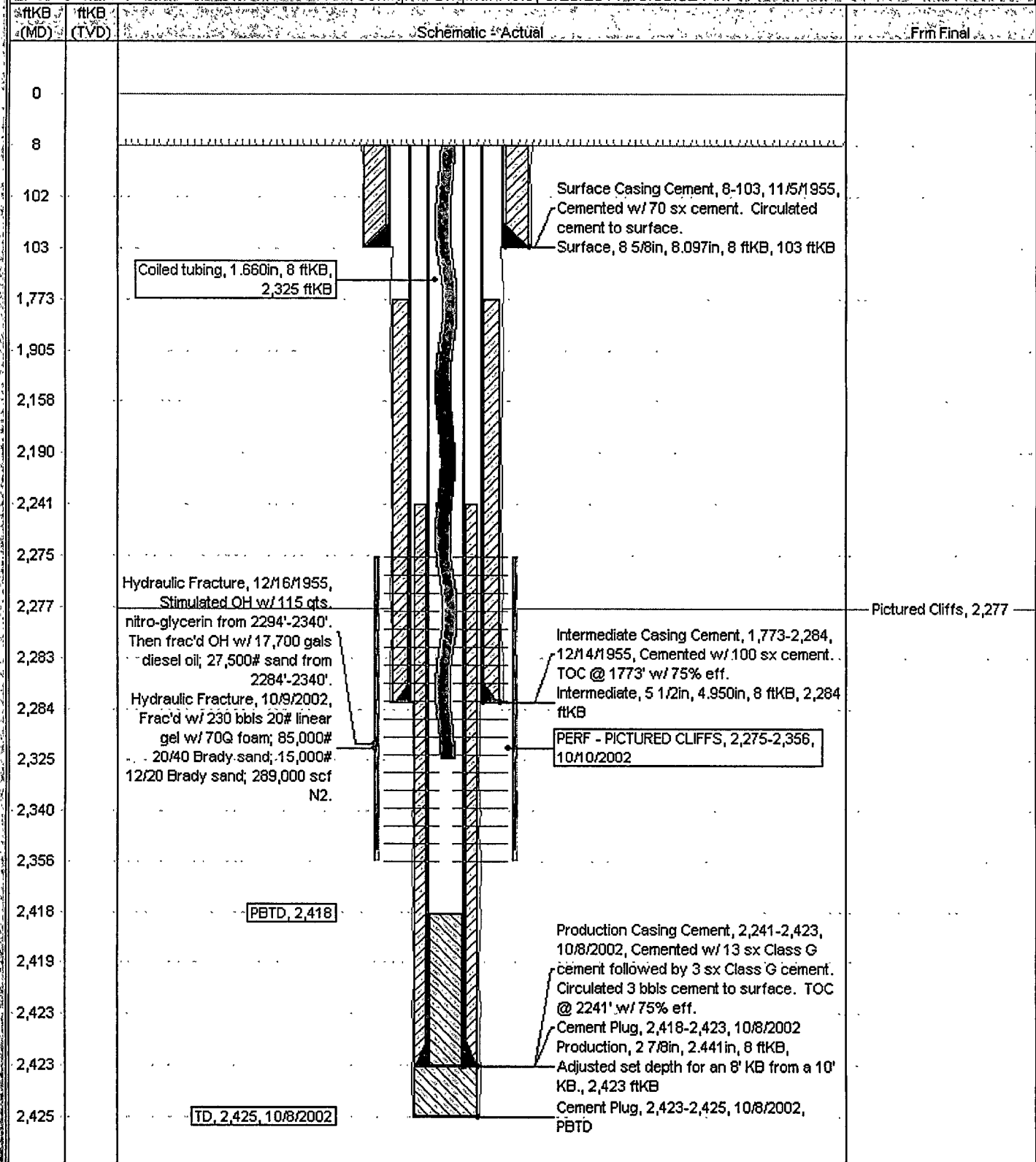
Current Schematic

ConocoPhillips

Well Name: HUERFANITO UNIT #31

API/ UWI 3004506132	Surface Legal Location NMPM,033-027N-009W	Field Name BALLARD PICTURED CLIFFS (15A5)	License No.	State/Province NEW MEXICO	Well Configuration Type	Edit
Ground Elevation (ft) 6,500.00	Original KB/RT Elevation (ft) 6,508.00	KB-Ground Distance (ft) 8.00	KB-Casing Flange Distance (ft) 6,508.00	KB-Tubing Hanger Distance (ft) 6,508.00		

Well Config: Original Hole: 6/20/2011:10:06:52 AM



Current Schematic

ConocoPhillips

Well Name: HUERFANITO UNIT #31

API/UWI	State Legal Location	Field Name	License No.	State/Province	Well Configuration Type	Edit
3004506132	NMPM_033-027N-009W	BALLANTZ (PICTURED CLIFFS) CAS		NEW MEXICO		
Ground Elevation (ft)	Original KB RT Elevation (ft)	KB-Ground Distance (ft)	KB-Casing/Flange Distance (ft)	KB-Tubing Hanger Distance (ft)		
6,500.00	6,508.00	8.00	6,508.00	6,508.00		

Well Config: - Original Hole, 1/1/2020

ftKB (MD)	ftKB (TVD)	Schematic - Actual	Frm Final
0		Surface Casing Cement, 8-103, 11/5/1955, Cemented w/ 70 sx cement. Circulated cement to surface.	
8		Surface, 8 5/8in, 8.097in, 8 ftKB, 103 ftKB	
102		Perf #3 to squeeze, 153, 1/1/2020	
103		Plug #3 squeeze, 8-153, 1/1/2020	
153		Plug #3; 8-153, 1/1/2020, Mix 61 sxs Class B cement, squeeze 55 sxs outside casing and leave 6 sxs inside to cover casing shoe and surface.	
1,350		Cement Retainer, 1,551-1,552	
1,400		Perf #2 to squeeze, 1,602, 1/1/2020	OJO ALAMO, 1,400
1,551		Plug #2, 1,350-1,602, 1/1/2020, Mix 108 sxs Class B cement, squeeze 99 sxs outside casing and leave 9 sxs inside to cover the Kirtland and Ojo Alamo tops	KIRTLAND, 1,552
1,552		Plug #2 squeeze, 1,350-1,602, 1/1/2020	
1,602			
1,773			
1,905			
2,030			
2,080			FRUITLAND, 2,080
2,158			
2,190			
2,224		Cement Retainer, 2,224-2,225	
2,225		Perf #1 to squeeze, 2,236, 1/1/2020	
2,236		Plug #1 squeeze, 2,030-2,236, 1/1/2020	
2,241		Plug #1; 2,030-2,236, 1/1/2020, Mix 27 sxs Class B cement, squeeze 20 sxs outside casing and leave 7 sxs inside to cover the Pictured Cliffs perforations.	
2,275		Hydraulic Fracture, 12/16/1955, Stimulated OH w/ 115 qts. nitro-glycerin from 2294'-2340'. Then frac'd OH w/ 17,700 gals diesel oil; 27,500# sand from 2284'-2340'.	
2,277		Intermediate Casing Cement, 1,773-2,284, 12/14/1955, Cemented w/ 100 sx cement. TOC @ 1773' w/ 75% eff.	PICTURED CLIFFS, 2,277
2,283		Intermediate, 5 1/2in, 4.950in, 8 ftKB, 2,284 ftKB	
2,284		PERF - PICTURED CLIFFS, 2,275-2,356, 10/10/2002	
2,325		Hydraulic Fracture, 10/9/2002, .Frac'd w/ 230 bbls 20# linear gel w/ 70Q foam; 85,000# 20/40 Brady sand; 15,000# 12/20 Brady sand; 289,000 scf N2.	
2,340			
2,356		Production Casing Cement, 2,241-2,423, 10/8/2002, Cemented w/ 13 sx Class G cement followed by 3 sx Class G cement. Circulated 3 bbls cement to surface. TOC @ 2241' w/ 75% eff.	
2,418		Cement Plug, 2,418-2,423, 10/8/2002	
2,419		Production, 2 7/8in, 2.441in, 8 ftKB, Adjusted set depth for an 8' KB from a 10' KB; 2,423 ftKB	
2,423		Cement Plug, 2,423-2,425, 10/8/2002, PBTD	
2,425			

**UNITED STATES DEPARTMENT OF THE INTERIOR
BUREAU OF LAND MANAGEMENT
FARMINGTON DISTRICT OFFICE
1235 LA PLATA HIGHWAY
FARMINGTON, NEW MEXICO 87401**

Attachment to notice of
Intention to Abandon:

Re: Permanent Abandonment
Well: 31 Huerfanito Unit

CONDITIONS OF APPROVAL

1. Plugging operations authorized are subject to the attached "General Requirements for Permanent Abandonment of Wells on Federal and Indian Lease."
2. Farmington Office is to be notified at least 24 hours before the plugging operations commence (505) 599-8907.
3. The following modifications to your plugging program are to be made:
 - a) Bring the top of the Pictured Cliffs/Fruitland plug to 1962' inside and outside the 2 7/8" casing.
 - b) Place the Kirtland/Ojo Alamo plug from 1619' – 1326' inside and outside the 2 7/8" casing.

You are also required to place cement excesses per 4.2 and 4.4 of the attached General Requirements.

Office Hours: 7:45 a.m. to 4:30 p.m.