

District I
1625 N. French Dr., Hobbs, NM 88240
Phone: (505) 393-6161 Fax: (505) 393-0720
District II
811 S. First St., Artesia, NM 88210
Phone: (505) 748-1283 Fax: (505) 748-9720
District III
1000 Rio Brazos Road, Aztec, NM 87410
Phone: (505) 334-6178 Fax: (505) 334-6170
District IV
1220 S. St. Francis Dr., Santa Fe, NM 87505
Phone: (505) 476-3460 Fax: (505) 476-3462

State of New Mexico
Energy, Minerals & Natural Resources
Department

OIL CONSERVATION DIVISION

1220 South St. Francis Dr.

Santa Fe, NM 87505

Form C-102

Revised August 1, 2011

Submit one copy to appropriate
District Office

☐ AMENDED REPORT

WELL LOCATION AND ACREAGE DEDICATION PLAT

¹ API Number 30-039-31229	² Pool Code 39189	³ Pool Name LINDRZTH GALLUP-DAKOTA WEST
⁴ Property Code 301277	⁵ Property Name JICARILLA APACHE TRIBAL 125	⁶ Well Number #18
⁷ OGRID No. 143199	⁸ Operator Name ENERVEST OPERATING, LLC	⁹ Elevation 7116'

¹⁰Surface Location

UL or lot no.	Section	Township	Range	Lot Idn	Feet from the	North/South line	Feet from the	East/West line	County
0	26	25N	4 W		895'	SOUTH	1874'	EAST	RIO ARRIBA

¹¹Bottom Hole Location If Different From Surface

UL or lot no.	Section	Township	Range	Lot Idn	Feet from the	North/South line	Feet from the	East/West line	County
0	26	25N	4 W		660'	SOUTH	1100'	EAST	RIO ARRIBA

¹² Dedicated Acres -	¹³ Joint of Infill	¹⁴ Consolidation Code	¹⁵ Order No.
------------------------------------	-------------------------------	----------------------------------	-------------------------

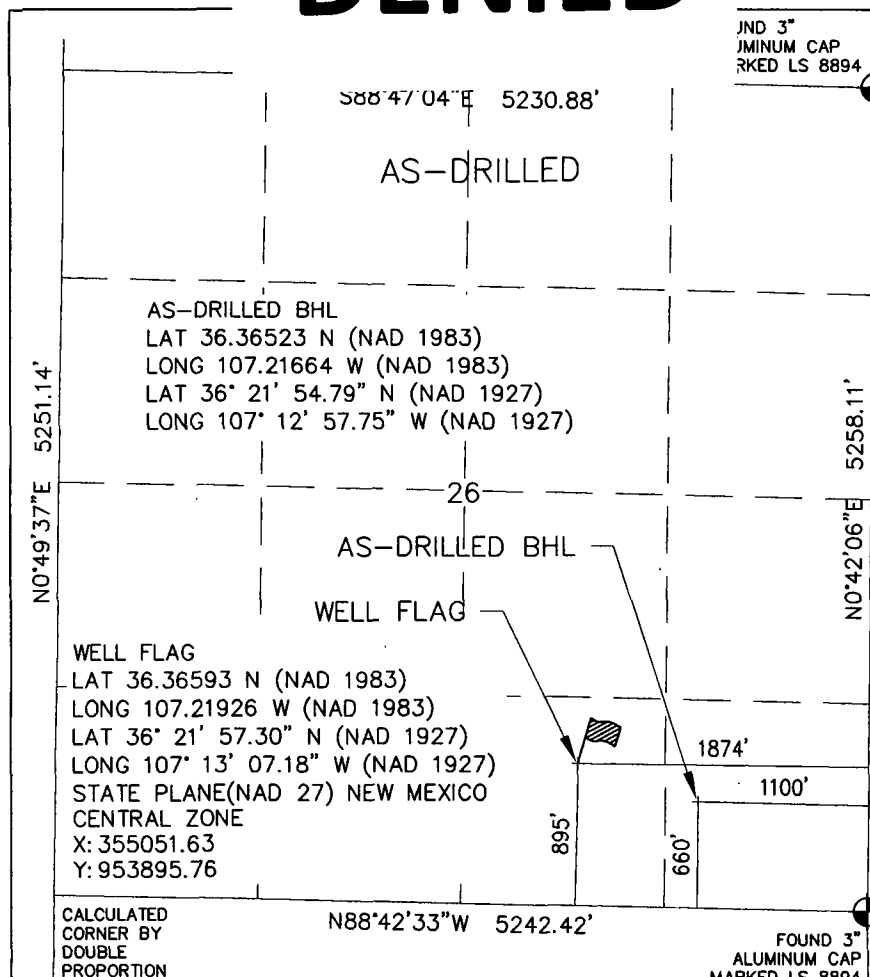
No allowable will be
approved by the divis

DENIED

ve been consolidated or a non-standard unit has been

OIL CONS. DIV. DIST. 3

SEP 08 2014



JND 3"
MINUM CAP
RKED LS 8894

¹⁷OPERATOR CERTIFICATION
I hereby certify that the information contained herein is true and complete to the best of my knowledge and belief, and that this organization either owns a working interest or unleased mineral interest in the land including the proposed bottom-hole location or has a right to drill this well at this location pursuant to a contract with an owner of such a mineral or working interest, or to a voluntary pooling agreement or a compulsory pooling order heretofore entered by the division.

Michelle Dueschen 09/05/14
Signature Date

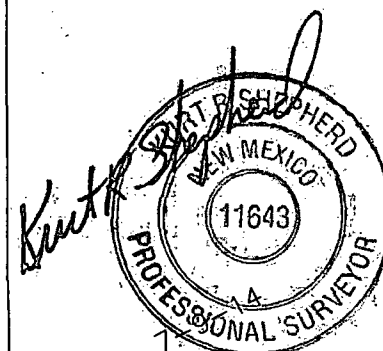
Michelle Dueschen
Printed Name

mdueschen@enervest.net
E-mail Address

¹⁸SURVEYOR CERTIFICATION
I hereby certify that the well location shown on this plat was plotted from field notes of actual surveys made by me or under my supervision, and that the same is true and correct to the best of my belief.

Survey Date: JANUARY 6, 2014

Signature and Seal of Professional Surveyor



Certificate Number 11643