

District I
1625 N. French Dr., Hobbs, NM 88240
District II
811 S. First St., Artesia, NM 88210
District III
1000 Rio Brazos Road, Aztec, NM 87410
District IV
1220 S. St. Francis Dr., Santa Fe, NM 87505

State of New Mexico
Energy Minerals and Natural Resources
Department
Oil Conservation Division
1220 South St. Francis Dr.
Santa Fe, NM 87505

Form C-144
Revised June 6, 2013

For temporary pits, below-grade tanks, and multi-well fluid management pits, submit to the appropriate NMOCD District Office.
For permanent pits submit to the Santa Fe Environmental Bureau office and provide a copy to the appropriate NMOCD District Office.

12553
39-20175

Pit, Below-Grade Tank, or
Proposed Alternative Method Permit or Closure Plan Application

OCD Received
1-14-15

Type of action: ☐ Below grade tank registration
☐ Permit of a pit or proposed alternative method
☒ Closure of a pit, below-grade tank, or proposed alternative method
☐ Modification to an existing permit/or registration
☐ Closure plan only submitted for an existing permitted or non-permitted pit, below-grade tank, or proposed alternative method

Instructions: Please submit one application (Form C-144) per individual pit, below-grade tank or alternative request

Please be advised that approval of this request does not relieve the operator of liability should operations result in pollution of surface water, ground water or the environment. Nor does approval relieve the operator of its responsibility to comply with any other applicable governmental authority's rules, regulations or ordinances.

1.
Operator: Burlington Resources OGRID #: 14538
Address: PO BOX 4289, Farmington, NM 87499
Facility or well name: San Juan 28-4 Unit 33
API Number: 3003920175 OCD Permit Number: _____
U/L or Qtr/Qtr M (SWSW) Section 33 Township 28N Range 4W County: Rio Arriba
Center of Proposed Design: Latitude 36.61174 °N Longitude -107.26074 °W NAD: ☒ 1927 ☐ 1983
Surface Owner: ☒ Federal ☐ State ☐ Private ☐ Tribal Trust or Indian Allotment

2.
☐ **Pit:** Subsection F, G or J of 19.15.17.11 NMAC
Temporary: ☐ Drilling ☐ Workover
☐ Permanent ☐ Emergency ☐ Cavitation ☐ P&A ☐ Multi-Well Fluid Management Low Chloride Drilling Fluid ☐ yes ☐ no
☐ Lined ☐ Unlined Liner type: Thickness _____ mil ☐ LLDPE ☐ HDPE ☐ PVC ☐ Other _____
☐ String-Reinforced
Liner Seams: ☐ Welded ☐ Factory ☐ Other _____ Volume: _____ bbl Dimensions: L _____ x W _____ x D _____

3.
☒ **Below-grade tank:** Subsection I of 19.15.17.11 NMAC
Volume: 120 bbl Type of fluid: Produced Water
Tank Construction material: Metal
☐ Secondary containment with leak detection ☒ Visible sidewalls, liner, 6-inch lift and automatic overflow shut-off
☐ Visible sidewalls and liner ☐ Visible sidewalls only ☐ Other _____
Liner type: Thickness 45 mil ☐ HDPE ☐ PVC ☒ Other LLDPE

4.
☐ **Alternative Method:**
Submittal of an exception request is required. Exceptions must be submitted to the Santa Fe Environmental Bureau office for consideration of approval.

5.
Fencing: Subsection D of 19.15.17.11 NMAC (Applies to permanent pits, temporary pits, and below-grade tanks)
☐ Chain link, six feet in height, two strands of barbed wire at top (Required if located within 1000 feet of a permanent residence, school, hospital, institution or church)
☐ Four foot height, four strands of barbed wire evenly spaced between one and four feet
☐ Alternate. Please specify _____

6.

Netting: Subsection E of 19.15.17.11 NMAC (*Applies to permanent pits and permanent open top tanks*)

☐ Screen ☐ Netting ☐ Other _____

☐ Monthly inspections (If netting or screening is not physically feasible)

7.

Signs: Subsection C of 19.15.17.11 NMAC

☐ 12"x 24", 2" lettering, providing Operator's name, site location, and emergency telephone numbers

☐ Signed in compliance with 19.15.16.8 NMAC

8.

Variances and Exceptions:

Justifications and/or demonstrations of equivalency are required. Please refer to 19.15.17 NMAC for guidance.

Please check a box if one or more of the following is requested, if not leave blank:

☐ Variance(s): Requests must be submitted to the appropriate division district for consideration of approval.

☐ Exception(s): Requests must be submitted to the Santa Fe Environmental Bureau office for consideration of approval.

9.

Siting Criteria (regarding permitting): 19.15.17.10 NMAC

Instructions: The applicant must demonstrate compliance for each siting criteria below in the application. Recommendations of acceptable source material are provided below. Siting criteria does not apply to drying pads or above-grade tanks.

General siting

Ground water is less than 25 feet below the bottom of a low chloride temporary pit or below-grade tank.

- ☐ NM Office of the State Engineer - iWATERS database search; ☐ USGS; ☒ Data obtained from nearby wells

☐ Yes ☒ No
☐ NA

Ground water is less than 50 feet below the bottom of a Temporary pit, permanent pit, or Multi-Well Fluid Management pit.

NM Office of the State Engineer - iWATERS database search; USGS; Data obtained from nearby wells

☐ Yes ☐ No
☒ NA

Within incorporated municipal boundaries or within a defined municipal fresh water well field covered under a municipal ordinance adopted pursuant to NMSA 1978, Section 3-27-3, as amended. **(Does not apply to below grade tanks)**

- Written confirmation or verification from the municipality; Written approval obtained from the municipality

☐ Yes ☐ No

Within the area overlying a subsurface mine. **(Does not apply to below grade tanks)**

- Written confirmation or verification or map from the NM EMNRD-Mining and Mineral Division

☐ Yes ☐ No

Within an unstable area. **(Does not apply to below grade tanks)**

- Engineering measures incorporated into the design; NM Bureau of Geology & Mineral Resources; USGS; NM Geological Society; Topographic map

☐ Yes ☐ No

Within a 100-year floodplain. **(Does not apply to below grade tanks)**

- FEMA map

☐ Yes ☐ No

Below Grade Tanks

Within 100 feet of a continuously flowing watercourse, significant watercourse, lake bed, sinkhole, wetland or playa lake (measured from the ordinary high-water mark).

- Topographic map; Visual inspection (certification) of the proposed site

☐ Yes ☒ No

Within 200 horizontal feet of a spring or a fresh water well used for public or livestock consumption;

- NM Office of the State Engineer - iWATERS database search; Visual inspection (certification) of the proposed site

☐ Yes ☒ No

Temporary Pit using Low Chloride Drilling Fluid (maximum chloride content 15,000 mg/liter)

Within 100 feet of a continuously flowing watercourse, or any other significant watercourse or within 200 feet of any lakebed, sinkhole, or playa lake (measured from the ordinary high-water mark). (Applies to low chloride temporary pits.)

- Topographic map; Visual inspection (certification) of the proposed site

☐ Yes ☐ No

Within 300 feet from a occupied permanent residence, school, hospital, institution, or church in existence at the time of initial application.

- Visual inspection (certification) of the proposed site; Aerial photo; Satellite image

☐ Yes ☐ No

Within 200 horizontal feet of a spring or a private, domestic fresh water well used by less than five households for domestic or stock watering purposes, or 300 feet of any other fresh water well or spring, in existence at the time of the initial application.

NM Office of the State Engineer - iWATERS database search; Visual inspection (certification) of the proposed site

☐ Yes ☐ No

Within 100 feet of a wetland.

- US Fish and Wildlife Wetland Identification map; Topographic map; Visual inspection (certification) of the proposed site

☐ Yes ☐ No

Temporary Pit Non-low chloride drilling fluid

Within 300 feet of a continuously flowing watercourse, or any other significant watercourse, or within 200 feet of any lakebed, sinkhole, or playa lake (measured from the ordinary high-water mark).

- Topographic map; Visual inspection (certification) of the proposed site

☐ Yes ☐ No

Within 300 feet from a permanent residence, school, hospital, institution, or church in existence at the time of initial application.

- Visual inspection (certification) of the proposed site; Aerial photo; Satellite image

☐ Yes ☐ No

Within 500 horizontal feet of a spring or a private, domestic fresh water well used by less than five households for domestic or stock watering purposes, or 1000 feet of any other fresh water well or spring, in the existence at the time of the initial application;

- NM Office of the State Engineer - iWATERS database search; Visual inspection (certification) of the proposed site

☐ Yes ☐ No

Within 300 feet of a wetland.

- US Fish and Wildlife Wetland Identification map; Topographic map; Visual inspection (certification) of the proposed site

☐ Yes ☐ No

Permanent Pit or Multi-Well Fluid Management Pit

Within 300 feet of a continuously flowing watercourse, or 200 feet of any other significant watercourse, or lakebed, sinkhole, or playa lake (measured from the ordinary high-water mark).

- Topographic map; Visual inspection (certification) of the proposed site

☐ Yes ☐ No

Within 1000 feet from a permanent residence, school, hospital, institution, or church in existence at the time of initial application.

- Visual inspection (certification) of the proposed site; Aerial photo; Satellite image

☐ Yes ☐ No

Within 500 horizontal feet of a spring or a fresh water well used for domestic or stock watering purposes, in existence at the time of initial application.

- NM Office of the State Engineer - iWATERS database search; Visual inspection (certification) of the proposed site

☐ Yes ☐ No

Within 500 feet of a wetland.

- US Fish and Wildlife Wetland Identification map; Topographic map; Visual inspection (certification) of the proposed site

☐ Yes ☐ No

10.

Temporary Pits, Emergency Pits, and Below-grade Tanks Permit Application Attachment Checklist: Subsection B of 19.15.17.9 NMAC

Instructions: Each of the following items must be attached to the application. Please indicate, by a check mark in the box, that the documents are attached.

- ☐ Hydrogeologic Report (Below-grade Tanks) - based upon the requirements of Paragraph (4) of Subsection B of 19.15.17.9 NMAC
- ☐ Hydrogeologic Data (Temporary and Emergency Pits) - based upon the requirements of Paragraph (2) of Subsection B of 19.15.17.9 NMAC
- ☐ Siting Criteria Compliance Demonstrations - based upon the appropriate requirements of 19.15.17.10 NMAC
- ☐ Design Plan - based upon the appropriate requirements of 19.15.17.11 NMAC
- ☐ Operating and Maintenance Plan - based upon the appropriate requirements of 19.15.17.12 NMAC
- ☐ Closure Plan (Please complete Boxes 14 through 18, if applicable) - based upon the appropriate requirements of Subsection C of 19.15.17.9 NMAC

and 19.15.17.13 NMAC

☐ Previously Approved Design (attach copy of design) API Number: _____ or Permit Number: _____

11.

Multi-Well Fluid Management Pit Checklist: Subsection B of 19.15.17.9 NMAC

Instructions: Each of the following items must be attached to the application. Please indicate, by a check mark in the box, that the documents are attached.

- ☐ Design Plan - based upon the appropriate requirements of 19.15.17.11 NMAC
- ☐ Operating and Maintenance Plan - based upon the appropriate requirements of 19.15.17.12 NMAC
- ☐ A List of wells with approved application for permit to drill associated with the pit.
- ☐ Closure Plan (Please complete Boxes 14 through 18, if applicable) - based upon the appropriate requirements of Subsection C of 19.15.17.9 NMAC

and 19.15.17.13 NMAC

- ☐ Hydrogeologic Data - based upon the requirements of Paragraph (4) of Subsection B of 19.15.17.9 NMAC
- ☐ Siting Criteria Compliance Demonstrations - based upon the appropriate requirements of 19.15.17.10 NMAC

☐ Previously Approved Design (attach copy of design) API Number: _____ or Permit Number: _____

12. **Permanent Pits Permit Application Checklist:** Subsection B of 19.15.17.9 NMAC

Instructions: Each of the following items must be attached to the application. Please indicate, by a check mark in the box, that the documents are attached.

- ☐ Hydrogeologic Report - based upon the requirements of Paragraph (1) of Subsection B of 19.15.17.9 NMAC
- ☐ Siting Criteria Compliance Demonstrations - based upon the appropriate requirements of 19.15.17.10 NMAC
- ☐ Climatological Factors Assessment
- ☐ Certified Engineering Design Plans - based upon the appropriate requirements of 19.15.17.11 NMAC
- ☐ Dike Protection and Structural Integrity Design - based upon the appropriate requirements of 19.15.17.11 NMAC
- ☐ Leak Detection Design - based upon the appropriate requirements of 19.15.17.11 NMAC
- ☐ Liner Specifications and Compatibility Assessment - based upon the appropriate requirements of 19.15.17.11 NMAC
- ☐ Quality Control/Quality Assurance Construction and Installation Plan
- ☐ Operating and Maintenance Plan - based upon the appropriate requirements of 19.15.17.12 NMAC
- ☐ Freeboard and Overtopping Prevention Plan - based upon the appropriate requirements of 19.15.17.11 NMAC
- ☐ Nuisance or Hazardous Odors, including H₂S, Prevention Plan
- ☐ Emergency Response Plan
- ☐ Oil Field Waste Stream Characterization
- ☐ Monitoring and Inspection Plan
- ☐ Erosion Control Plan
- ☐ Closure Plan - based upon the appropriate requirements of Subsection C of 19.15.17.9 NMAC and 19.15.17.13 NMAC

13. **Proposed Closure:** 19.15.17.13 NMAC

Instructions: Please complete the applicable boxes, Boxes 14 through 18, in regards to the proposed closure plan.

- Type: ☐ Drilling ☐ Workover ☐ Emergency ☐ Cavitation ☐ P&A ☐ Permanent Pit ☒ Below-grade Tank ☐ Multi-well Fluid Management Pit
☐ Alternative
- Proposed Closure Method: ☒ Waste Excavation and Removal
☐ Waste Removal (Closed-loop systems only)
☐ On-site Closure Method (Only for temporary pits and closed-loop systems)
☐ In-place Burial ☐ On-site Trench Burial
☐ Alternative Closure Method

14. **Waste Excavation and Removal Closure Plan Checklist:** (19.15.17.13 NMAC) **Instructions:** Each of the following items must be attached to the closure plan. Please indicate, by a check mark in the box, that the documents are attached.

- ☒ Protocols and Procedures - based upon the appropriate requirements of 19.15.17.13 NMAC
- ☒ Confirmation Sampling Plan (if applicable) - based upon the appropriate requirements of Subsection C of 19.15.17.13 NMAC
- ☒ Disposal Facility Name and Permit Number (for liquids, drilling fluids and drill cuttings)
- ☒ Soil Backfill and Cover Design Specifications - based upon the appropriate requirements of Subsection H of 19.15.17.13 NMAC
- ☒ Re-vegetation Plan - based upon the appropriate requirements of Subsection H of 19.15.17.13 NMAC
- ☒ Site Reclamation Plan - based upon the appropriate requirements of Subsection H of 19.15.17.13 NMAC

15. **Siting Criteria (regarding on-site closure methods only):** 19.15.17.10 NMAC

Instructions: Each siting criteria requires a demonstration of compliance in the closure plan. Recommendations of acceptable source material are provided below. Requests regarding changes to certain siting criteria require justifications and/or demonstrations of equivalency. Please refer to 19.15.17.10 NMAC for guidance.

- | | |
|---|---|
| Ground water is less than 25 feet below the bottom of the buried waste.
- NM Office of the State Engineer - iWATERS database search; USGS; Data obtained from nearby wells | <input type="checkbox"/> Yes <input type="checkbox"/> No
<input type="checkbox"/> NA |
| Ground water is between 25-50 feet below the bottom of the buried waste
- NM Office of the State Engineer - iWATERS database search; USGS; Data obtained from nearby wells | <input type="checkbox"/> Yes <input type="checkbox"/> No
<input type="checkbox"/> NA |
| Ground water is more than 100 feet below the bottom of the buried waste.
- NM Office of the State Engineer - iWATERS database search; USGS; Data obtained from nearby wells | <input type="checkbox"/> Yes <input type="checkbox"/> No
<input type="checkbox"/> NA |
| Within 100 feet of a continuously flowing watercourse, or 200 feet of any other significant watercourse, lakebed, sinkhole, or playa lake (measured from the ordinary high-water mark).
- Topographic map; Visual inspection (certification) of the proposed site | <input type="checkbox"/> Yes <input type="checkbox"/> No |
| Within 300 feet from a permanent residence, school, hospital, institution, or church in existence at the time of initial application.
- Visual inspection (certification) of the proposed site; Aerial photo; Satellite image | <input type="checkbox"/> Yes <input type="checkbox"/> No |
| Within 300 horizontal feet of a private, domestic fresh water well or spring used for domestic or stock watering purposes, in existence at the time of initial application.
- NM Office of the State Engineer - iWATERS database; Visual inspection (certification) of the proposed site | <input type="checkbox"/> Yes <input type="checkbox"/> No |
| Written confirmation or verification from the municipality; Written approval obtained from the municipality | <input type="checkbox"/> Yes <input type="checkbox"/> No |
| Within 300 feet of a wetland.
US Fish and Wildlife Wetland Identification map; Topographic map; Visual inspection (certification) of the proposed site | <input type="checkbox"/> Yes <input type="checkbox"/> No |
| Within incorporated municipal boundaries or within a defined municipal fresh water well field covered under a municipal ordinance | |

adopted pursuant to NMSA 1978, Section 3-27-3, as amended.

- Written confirmation or verification from the municipality; Written approval obtained from the municipality

☐ Yes ☐ No

Within the area overlying a subsurface mine.

- Written confirmation or verification or map from the NM EMNRD-Mining and Mineral Division

☐ Yes ☐ No

Within an unstable area.

- Engineering measures incorporated into the design; NM Bureau of Geology & Mineral Resources; USGS; NM Geological Society; Topographic map

☐ Yes ☐ No

Within a 100-year floodplain.

- FEMA map

☐ Yes ☐ No

16.
On-Site Closure Plan Checklist: (19.15.17.13 NMAC) *Instructions: Each of the following items must be attached to the closure plan. Please indicate, by a check mark in the box, that the documents are attached.*

- ☐ Siting Criteria Compliance Demonstrations - based upon the appropriate requirements of 19.15.17.10 NMAC
- ☐ Proof of Surface Owner Notice - based upon the appropriate requirements of Subsection E of 19.15.17.13 NMAC
- ☐ Construction/Design Plan of Burial Trench (if applicable) based upon the appropriate requirements of Subsection K of 19.15.17.11 NMAC
- ☐ Construction/Design Plan of Temporary Pit (for in-place burial of a drying pad) - based upon the appropriate requirements of 19.15.17.11 NMAC
- ☐ Protocols and Procedures - based upon the appropriate requirements of 19.15.17.13 NMAC
- ☐ Confirmation Sampling Plan (if applicable) - based upon the appropriate requirements of 19.15.17.13 NMAC
- ☐ Waste Material Sampling Plan - based upon the appropriate requirements of 19.15.17.13 NMAC
- ☐ Disposal Facility Name and Permit Number (for liquids, drilling fluids and drill cuttings or in case on-site closure standards cannot be achieved)
- ☐ Soil Cover Design - based upon the appropriate requirements of Subsection H of 19.15.17.13 NMAC
- ☐ Re-vegetation Plan - based upon the appropriate requirements of Subsection H of 19.15.17.13 NMAC
- ☐ Site Reclamation Plan - based upon the appropriate requirements of Subsection H of 19.15.17.13 NMAC

17.

Operator Application Certification:

I hereby certify that the information submitted with this application is true, accurate and complete to the best of my knowledge and belief.

Name (Print): _____ Title: _____

Signature: _____ Date: _____

e-mail address: _____ Telephone: _____

18.

OCD Approval: ☐ Permit Application (including closure plan) ☒ Closure ~~Plan (only)~~ ☐ OCD Conditions (see attachment)

OCD Representative Signature:  Approval Date: 1/15/15

Title: Environmental Specialist OCD Permit Number: _____

19.

Closure Report (required within 60 days of closure completion): 19.15.17.13 NMAC

Instructions: Operators are required to obtain an approved closure plan prior to implementing any closure activities and submitting the closure report. The closure report is required to be submitted to the division within 60 days of the completion of the closure activities. Please do not complete this section of the form until an approved closure plan has been obtained and the closure activities have been completed.

☒ Closure Completion Date: 5/22/13

20.

Closure Method:

- ☒ Waste Excavation and Removal ☐ On-Site Closure Method ☐ Alternative Closure Method ☐ Waste Removal (Closed-loop systems only)
- ☐ If different from approved plan, please explain.

21.

Closure Report Attachment Checklist: *Instructions: Each of the following items must be attached to the closure report. Please indicate, by a check mark in the box, that the documents are attached.*

- ☒ Proof of Closure Notice (surface owner and division)
- ☐ Proof of Deed Notice (required for on-site closure for private land only)
- ☐ Plot Plan (for on-site closures and temporary pits)
- ☒ Confirmation Sampling Analytical Results (if applicable)
- ☐ Waste Material Sampling Analytical Results (required for on-site closure)
- ☐ Disposal Facility Name and Permit Number
- ☒ Soil Backfilling and Cover Installation
- ☒ Re-vegetation Application Rates and Seeding Technique
- ☒ Site Reclamation (Photo Documentation)

On-site Closure Location: Latitude _____ Longitude _____ NAD: ☐ 1927 ☐ 1983

Operator Closure Certification:

I hereby certify that the information and attachments submitted with this closure report is true, accurate and complete to the best of my knowledge and belief. I also certify that the closure complies with all applicable closure requirements and conditions specified in the approved closure plan.

Name (Print): Kenny Davis Title: Staff Regulatory Technician

Signature:  Date: 12/3/14

e-mail address: kenny.r.davis@conocophillips.com Telephone: 505-599-4045

Burlington Resources Oil Gas Company, LP
San Juan Basin
Below Grade Tank Closure Report

Lease Name: SJ 28-4 Unit 33

API No.: 3003920175

In accordance with Rule 19.15.17.13 NMAC the following information describes the closure of the below-grade tank referenced above. All proper documentation regarding closure activities is being included with the C-144.

General Plan:

1. BR shall close a below-grade tank within 60 days of cessation of operations per Subsection G.4 of 19.15.17.13 NMAC. This will include a) below-grade tanks that do not meet the requirements of Paragraphs (1) through (4) of Subsection I of 19.15.17.11 NMAC or is not included in Paragraph (5) of Subsection I of 19.15.17.11 NMAC within five years, if not retrofitted to comply with Paragraphs (1) through (4) of Subsection I of 19.15.17.11 NMAC; b) an earlier date that the division requires because of imminent danger to fresh water, public health or the environment. For any closure, BR will file the C144 Closure Report as required.
2. **The below-grade tank referenced above was permitted and closed within 60 days of cessation of the below-grade tanks operation.**
3. BR shall remove liquids and sludge from a below-grade tank prior to implementing a closure method and shall dispose of the liquids and sludge in a division-approved facility. The facilities to be used will be Basin Disposal (Permit #NM-01-005), JFJ Landfarm % Industrial Ecosystem Inc. (Permit # NM-01-0010B) and Envirotech Land Farm (Permit #NM-01-011). The liner after being cleaned well (Subsection D, Paragraph 1, Subparagraph (m) of 19.15.9.712 NMAC) will be disposed of at the San Juan County Regional Landfill located on CR 3100.

All recovered liquids were disposed of at Basin Disposal (Permit #NM-01-005) and any sludge or soil required to be removed to facilitate closure was hauled to Envirotech Land Farm (Permit #NM-01-011) and JFJ Landfarm % IEI (Permit #NM-01-0010B). The liner was cleaned per Subsection D, Paragraph 1, Subparagraph (m) of 19.15.9.712 NMAC was disposed of at the San Juan County Regional Landfill located on CR 3100.

4. BR Will receive prior approval to remove the below-grade tank and dispose of it in a division-approved facility or recycle, reuse, or reclaim it in a manner that the appropriate division district office approves.

The below-grade tank was disposed of in a division-approved manner.

5. If there is any on-site equipment associated with a below-grade tank, then BR shall remove the equipment, unless the equipment is required for some other purpose.

All on-site equipment associated with the below-grade tank was removed.

6. BR will test the soils beneath the below-grade tank to determine whether a release has occurred. COPC shall collect, at a minimum, a five point, composite sample; collect individual grab samples from any area that is wet, discolored or showing other evidence of a release; and analyzed for the constituents listed in Table I of 19.15.17.13 NMAC. COPC shall notify the division of its results on form C-141.

12/4/2014

10

7. A five point composite sample was taken of the below-grade tank using sampling tools and all samples tested per Subsection B of 19.15.17.1 3(B)(1)(b). (Sample results attached).

Components	Tests Method	Limit (mg/kg)
Benzene	EPA SW-846 8021B or 8260B	0.2
BTEX	EPA SW-846 8021B or 8260B	50
TPH	EPA SW-846 418.1	100
Chlorides	EPA 300.1	250

8. If BR or the division determines that a release has occurred, then BR shall comply with 19.15.3.116 NMAC and 19.15.1.19 NMAC, as appropriate.

A release was not determined for the above referenced well.

9. If the sampling program demonstrates that a release has not occurred or that any release does not exceed the concentrations specified in Table I of 19.15.17.13 NMAC, then BR shall backfill the excavation with compacted, non-waste containing, earthen material; construct a division-prescribed soil cover; recontour and re-vegetate the site.

The below-grade tank area passed all requirements of Paragraph (4) of Subsection E of 19.15.17.13 NMAC and was backfilled with compacted, non-waste containing, earthen material.

10. Notice of Closure will be given prior to closure to the Aztec Division office between 72 hours and one week via email or verbally. The notification of closure will include the following:
- Operator's name
 - Location by Unit Letter, Section, Township, and Range. Well name and API number.

Notification is missing due to employee turnovers. ConocoPhillips has reviewed our internal processes and has updated them to include the required 72 hour notification.

11. The surface owner shall be notified of BR's closing of the below-grade tank 72 hours, but not more than one week, prior to closure as per the approved closure plan via certified mail, return receipt requested.

The closure process notification to the landowner not found. COPC was not aware that the original notification sent at the time of Permitting was not the only closure notification required.

ConocoPhillips has reviewed our internal processes and has updated them to include the required 72 hour notification.

12. Re-contouring of location will match fit, shape, line, form and texture of the surrounding. Re-shaping will include drainage control, prevent ponding, and prevent erosion. Natural drainages will be unimpeded and water bars and/or silt traps will be place in areas where needed to prevent erosion on a large scale. Final re-contour shall have a uniform appearance with smooth surface, fitting the natural landscape.

The below-grade tank area was re-contoured to match fit, shape, line, form and texture of the surrounding area. Re-shaping, including drainage control, to prevent ponding and erosion. Natural drainages were unimpeded and water bars and/or silt traps were placed in areas where needed to prevent erosion on a large scale. Final recontour has a uniform appearance with smooth surface, fitting the natural landscape.

13. BR Shall seed the disturbed areas the first favorable growing season following closure of a below-grade tank. Seeding will be accomplished via drilling on the contour whenever practical or by other division-approved

methods. BLM stipulated seed mixes will be used on federally regulated lands and division-approved seed mixtures (administratively approved if required) will be utilized on all State or private lands. A uniform vegetative cover has been established that reflects a life-form ratio of plus or minus fifty percent (50%) of pre-disturbance levels and a total percent plant cover of at least seventy percent (70%) of pre-disturbance levels, excluding noxious weeds. If an alternate seed mix is required by the state, private owner or tribe, it will be implemented with administrative approval if needed. COPC will repeat seeding or planting will be continued until successful vegetative growth occurs.

Provision 13 was accomplished through complying with BLM seeding requirements as allowed by the BLM/OCD MOU.

14. A minimum of four feet of cover shall be achieved and the cover shall include one foot of suitable material, with chloride concentrations less than 600 mg/kg as analyzed by EPA Method 300.0, to establish vegetation at the site, or the background thickness of topsoil, whichever is greater.

The below-grade tank area was backfilled and more than four feet of cover was achieved and the cover included one foot of suitable material to establish vegetation at the site.

15. All closure activities will include proper documentation and be available for review upon request and will be submitted to OCD within 60 days of closure of the below-grade tank. Closure report will be filed on C-144 and incorporate the following:
 - Soil Backfilling and Cover Installation **(See Report)**
 - Re-vegetation application rates and seeding techniques **(See Report)**
 - Photo documentation of the site reclamation **(Included as an attachment)**
 - Confirmation Sampling Results **(Included as an attachment)**
 - Proof of closure notice **(Included as an attachment)**

Closure Documentation was not submitted within the 60 day requirement due to employee turnovers. ConocoPhillips has reviewed our internal processes and has updated them to ensure closure documentation is submitted with the 60 day time frame.



Animas Environmental Services, LLC

www.animasenvironmental.com

624 E. Comanche
Farmington, NM 87401
505-564-2281

Durango, Colorado
970-403-3084

July 2, 2013

Lisa Hunter
ConocoPhillips
San Juan Business Unit
Office 214-04
5525 Hwy 64
Farmington, New Mexico 87401

Via electronic mail to: SJBUE-Team@ConocoPhillips.com

**RE: Below Grade Tank Closure Report
San Juan 28-4 #33
Rio Arriba County, New Mexico**

Dear Ms. Hunter:

Animas Environmental Services, LLC (AES) is pleased to provide the final report associated with the below grade tank (BGT) closure at ConocoPhillips (CoP) San Juan 28-4 #33, located in Rio Arriba County, New Mexico. Tank removal had been completed by CoP contractors prior to AES' arrival at the location.

1.0 Site Information

1.1 Location

Site Name – San Juan 28-4 #33
Legal Description – SW $\frac{1}{4}$ SW $\frac{1}{4}$, Section 33, T28N, R4W, Rio Arriba County, New Mexico
Well Latitude/Longitude – N36.61180 and W107.26144, respectively
BGT Latitude/Longitude – N36.61185 and W107.26167, respectively
Land Jurisdiction – U.S. Forest Service
Figure 1. Topographic Site Location Map
Figure 2. Aerial Site Map, May 2013

1.2 NMOCD Ranking

Prior to site work, the New Mexico Oil Conservation Division (NMOCD) database was reviewed, and a C-144 form dated February 2009 for the San Juan 28-4 #33 reported the depth to groundwater as greater than 100 feet below ground surface (bgs). The New Mexico Office of the State Engineer (NMOSE) database was reviewed for nearby water wells, and no registered water wells were reported to be located within 1,000 feet of

the location. Additionally, Google Earth and the New Mexico Tech Petroleum Recovery Research Center online mapping tool (<http://ford.nmt.edu/react/project.html>) were accessed to aid in the identification of downgradient surface water.

Once on site, AES personnel further assessed the ranking using topographical interpretation, Global Positioning System (GPS) elevation readings, and visual reconnaissance. AES personnel concluded that depth to groundwater at the site was greater than 100 feet bgs. A stock pond is located approximately 600 feet southeast of the location. Based on this information, the location was assessed a ranking score of 10.

1.3 BGT Closure Assessment

AES was initially contacted by Freddie Martinez, CoP representative, on May 21, 2013, and on May 22, 2013, Heather Woods and Stephanie Lynn of AES mobilized to the location. AES personnel collected six soil samples from below the BGT liner. Four samples were collected from the perimeter of the BGT footprint, one sample was collected from the center of the BGT footprint, and one sample was composited from the four perimeter samples and one center sample.

2.0 Soil Sampling

On May 22, 2013, AES personnel conducted field screening and collected five soil samples (S-1 through S-5) and one 5-point composite (SC-1) from below the BGT. Soil samples were collected from approximately 0.5 feet below the former BGT for field screening of volatile organic compounds (VOCs) and total petroleum hydrocarbon (TPH). Soil sample SC-1 was field screened for chloride and was submitted for confirmation laboratory analysis. Soil sample locations are included on Figure 2.

2.1 Field Screening

2.1.1 Volatile Organic Compounds

A portion of each sample was utilized for field screening of VOC vapors with a photo-ionization detector (PID) organic vapor meter (OVM). Before beginning field screening, the PID-OVM was first calibrated with 100 parts per million (ppm) isobutylene gas.

2.1.2 Total Petroleum Hydrocarbons

Soil samples were also analyzed in the field for TPH per USEPA Method 418.1 using a Buck Scientific Model HC-404 Total Hydrocarbon Analyzer Infrared Spectrometer (Buck). A 3-point calibration was completed prior to conducting soil analyses. Field analytical protocol followed AES's *Standard Operating Procedure: Field Analysis Total Petroleum Hydrocarbons per EPA Method 418.1*.

2.1.3 Chlorides

Soil sample SC-1 was field screened for chlorides using Chloride Drop Count Titration with silver nitrate. Sampling and analysis methods followed procedures provided by Hach Company.

2.2 Laboratory Analyses

The composite soil sample SC-1 collected for laboratory analysis was placed into a new, clean, laboratory-supplied container, which was then labeled, placed on ice, and logged onto a sample chain of custody record. The sample was maintained on ice until delivery to the analytical laboratory, Hall Environmental Analysis Laboratory (Hall), in Albuquerque, New Mexico. Soil sample SC-1 was laboratory analyzed for:

- Benzene, toluene, ethylbenzene, and xylene (BTEX) per U.S. Environmental Protection Agency (USEPA) Method 8021B; and
- Chloride per USEPA Method 300.0.

2.3 Field and Laboratory Analytical Results

Field screening readings for VOCs via OVM ranged from 1.3 ppm in S-1 up to 2.1 ppm in S-3. Field TPH concentrations ranged from 43.1 mg/kg in S-3 up to 86.1 mg/kg in S-1. The field chloride concentration in SC-1 was 60 mg/kg. Field screening results are summarized in Table 1 and presented on Figure 2. The AES Field Screening Report is attached.

Table 1. Soil Field Screening VOCs, TPH, and Chloride Results
San Juan 28-4 #33 BGT Closure, May 2013

<i>Sample ID</i>	<i>Date Sampled</i>	<i>Depth below BGT (ft)</i>	<i>VOCs OVM Reading (ppm)</i>	<i>Field TPH (mg/kg)</i>	<i>Field Chlorides (mg/kg)</i>
NMOCD Action Level (NMAC 19.15.17.13E)			--	100	250
S-1	5/22/13	0.5	1.3	86.1	NA
S-2	5/22/13	0.5	2.0	48.6	NA
S-3	5/22/13	0.5	2.1	43.1	NA
S-4	5/22/13	0.5	1.9	54.2	NA
S-5	5/22/13	0.5	1.7	51.4	NA
SC-1	5/22/13	0.5	NA	NA	60

NA - not analyzed

Laboratory analytical results reported benzene and total BTEX concentrations in SC-1 as less than 0.050 mg/kg and 0.25 mg/kg, respectively. The laboratory chloride concentration was reported below the laboratory detection limit of 30 mg/kg. Laboratory analytical results are summarized in Table 2 and included on Figure 2. Laboratory analytical reports are attached.

Table 2. Soil Laboratory Analytical Results
San Juan 28-4 #33 BGT Closure, May 2013

Sample ID	Date Sampled	Depth (ft)	Benzene (mg/kg)	Total BTEX (mg/kg)	TPH- GRO (mg/kg)	TPH- DRO (mg/kg)	Chlorides (mg/kg)
NMOCD Action Level (NMAC 19.15.17.13E)			0.2	50		100	250
SC-1	5/22/13	0.5	<0.050	<0.25	NA	NA	<30

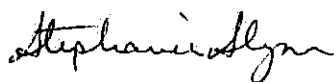
NA - not analyzed

3.0 Conclusions and Recommendations

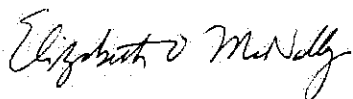
NMOCD action levels for BGT closures are specified in New Mexico Administrative Code (NMAC) 19.15.17.13E. Field TPH concentrations were below the NMOCD action level of 100 mg/kg, with the highest concentration reported in S-1 with 86.1 mg/kg. Benzene and total BTEX concentrations in SC-1 were below the NMOCD action levels of 0.2 mg/kg and 50 mg/kg, respectively. Chloride concentrations in SC-1 were below the NMOCD action level of 250 mg/kg. Based on field screening and laboratory analytical results for benzene, total BTEX, TPH, and chlorides, no further work is recommended at the San Juan 28-4 #33.

If you have any questions about this report or site conditions, please do not hesitate to contact Deborah Watson at (505) 564-2281.

Sincerely,



Stephanie Lynn, EIT

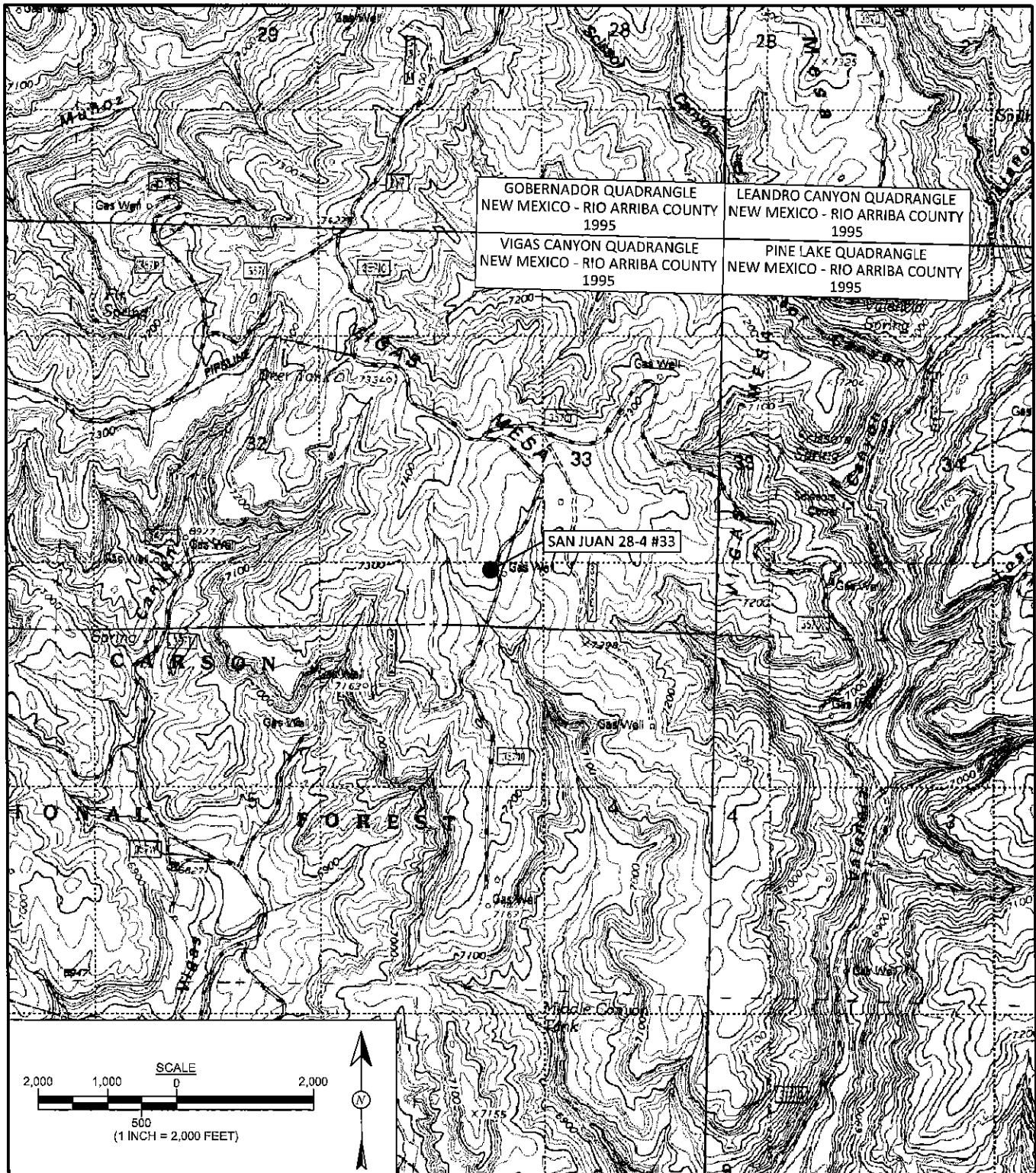


Elizabeth McNally, P.E.

Attachments:

Figure 1. Topographic Site Location Map
Figure 2. Aerial Site Map, May 2013
AES Field Screening Report 052213
Hall Analytical Report 1305946

R:\Animas 2000\Dropbox\2013 Projects\ConocoPhillips\SJ 28-4 #33\CoP San Juan 28-4 #33 BGT Closure
Report 070213.docx



Animas Environmental Services, LLC

DRAWN BY: C. Lameman	DATE DRAWN: May 29, 2013
REVISIONS BY: C. Lameman	DATE REVISED: May 29, 2013
CHECKED BY: D. Watson	DATE CHECKED: May 29, 2013
APPROVED BY: E. McNally	DATE APPROVED: May 29, 2013

FIGURE 1

TOPOGRAPHIC SITE LOCATION MAP

ConocoPhillips
SAN JUAN 28-4 #33
SW $\frac{1}{4}$ SW $\frac{1}{4}$, SECTION 33, T28N, R4W
RIO ARRIBA COUNTY, NEW MEXICO
N36.61180, W107.26144

LEGEND

● SAMPLE LOCATIONS

Field Screening Results

Sample ID	Date	OVM-PID (ppm)	TPH (mg/kg)	Chlorides (mg/kg)
NMOC ACTION LEVEL		—	100	250
S-1	5/22/13	1.3	86.1	NA
S-2	5/22/13	2.0	48.6	NA
S-3	5/22/13	2.1	43.1	NA
S-4	5/22/13	1.9	54.2	NA
S-5	5/22/13	1.7	51.4	NA
SC-1	5/22/13	NA	NA	60

SC-1 IS A 5-POINT COMPOSITE SAMPLE OF S-1 THROUGH S-5. NA - NOT ANALYZED

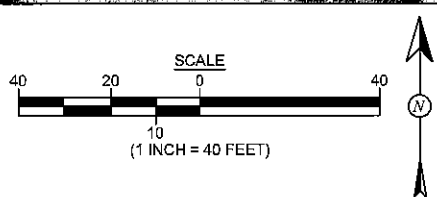
Laboratory Analytical Results

Sample ID	Date	Benzene (mg/kg)	Total BTEX (mg/kg)	TPH - GRO (mg/kg)	TPH - DRO (mg/kg)	Chlorides (mg/kg)
NMOC ACTION LEVEL		0.2	50	100		250
SC-1	5/22/13	<0.050	<0.25	NA	NA	<30

SAMPLE WAS ANALYZED PER EPA METHOD 8021B AND 300.0.

BGT - N36.61185
W107.26167

SAN JUAN 28-4 #33
WELLHEAD



AERIAL SOURCE: © 2013 MICROSOFT CORPORATION - AVAILABLE EXCLUSIVELY BY DIGITALGLOBE



Animas Environmental Services, LLC

DRAWN BY:

C. Lameman

DATE DRAWN:

May 29, 2013

REVISIONS BY:

C. Lameman

DATE REVISED:

May 29, 2013

CHECKED BY:

D. Watson

DATE CHECKED:

May 29, 2013

APPROVED BY:

E. McNally

DATE APPROVED:

May 29, 2013

FIGURE 2

**AERIAL SITE MAP
BELOW GRADE TANK CLOSURE
MAY 2013**

ConocoPhillips
SAN JUAN 28-4 #33
SW¼ SW¼, SECTION 33, T28N, R4W
RIO ARriba COUNTY, NEW MEXICO
N36.61180, W107.26144

AES Field Screening Report



Animas Environmental Services, LLC

www.animasenvironmental.com

Client: ConocoPhillips

624 E. Comanche
Farmington, NM 87401
505-564-2281

Project Location: San Juan 28-4 #33

Date: 5/22/2013

Durango, Colorado
970-403-3084

Matrix: Soil

Sample ID	Collection Date	Time of Sample Collection	Sample Location	OVM (ppm)**	Field Chloride (mg/kg)**	Field TPH Analysis Time**	Field TPH* (mg/kg)	TPH PQL (mg/kg)	DF	TPH Analysts Initials
S-1	5/22/2013	17:20	North	1.3	NA	9:40	86.1	20.0	1	HMW
S-2	5/22/2013	17:21	South	2.0	NA	9:43	48.6	20.0	1	HMW
S-3	5/22/2013	17:23	East	2.1	NA	9:47	43.1	20.0	1	HMW
S-4	5/22/2013	17:24	West	1.9	NA	9:50	54.2	20.0	1	HMW
S-5	5/22/2013	17:25	Center	1.7	NA	9:54	51.4	20.0	1	HMW
SC-1	5/22/2013	17:26	Composite	NA	60	Not Analyzed for TPH.				

Field Chloride - Quantab Chloride Titrators or Drop Count Titration with

Silver Nitrate

Total Petroleum Hydrocarbons - USEPA 418.1

PQL Practical Quantitation Limit

ND Not Detected at the Reporting Limit

NA Not Analyzed

DF Dilution Factor

*Field TPH concentrations recorded may be below PQL.

**OVM, Field TPH, and Field Chloride measured in lab on 5/23/2013

Analyst:

Heather A. Wood



*Hall Environmental Analysis Laboratory
4901 Hawkins NE
Albuquerque, NM 87109
TEL: 505-345-3975 FAX: 505-345-4107
Website: www.hallenvironmental.com*

May 30, 2013

Debbie Watson

Animas Environmental

624 East Comanche

Farmington, NM 87401

TEL: (505) 486-4071

FAX

RE: CoP San Juan 28-4 #33

OrderNo.: 1305946

Dear Debbie Watson:

Hall Environmental Analysis Laboratory received 1 sample(s) on 5/23/2013 for the analyses presented in the following report.

These were analyzed according to EPA procedures or equivalent. To access our accredited tests please go to www.hallenvironmental.com or the state specific web sites. See the sample checklist and/or the Chain of Custody for information regarding the sample receipt temperature and preservation. Data qualifiers or a narrative will be provided if the sample analysis or analytical quality control parameters require a flag. All samples are reported as received unless otherwise indicated. Lab measurement of analytes considered field parameters that require analysis within 15 minutes of sampling such as pH and residual chlorine are qualified as being analyzed outside of the recommended holding time.

Please don't hesitate to contact HEAL for any additional information or clarifications.

Sincerely,

A handwritten signature in black ink, appearing to read "Andy Freeman", written over a light gray dotted rectangular background.

Andy Freeman

Laboratory Manager

4901 Hawkins NE

Albuquerque, NM 87109

Hall Environmental Analysis Laboratory, Inc.

Analytical Report

Lab Order 1305946

Date Reported: 5/30/2013

CLIENT: Animas Environmental

Client Sample ID: SC-1

Project: CoP San Juan 28-4 #33

Collection Date: 5/22/2013 5:26:00 PM

Lab ID: 1305946-001

Matrix: MEOH (SOIL)

Received Date: 5/23/2013 10:00:00 AM

Analyses	Result	RL	Qual	Units	DF	Date Analyzed	Batch
EPA METHOD 8021B: VOLATILES							Analyst: DAM
Benzene	ND	0.050		mg/Kg	1	5/23/2013 12:40:46 PM	R10831
Toluene	ND	0.050		mg/Kg	1	5/23/2013 12:40:46 PM	R10831
Ethylbenzene	ND	0.050		mg/Kg	1	5/23/2013 12:40:46 PM	R10831
Xylenes, Total	ND	0.10		mg/Kg	1	5/23/2013 12:40:46 PM	R10831
Surr: 4-Bromofluorobenzene	98.7	80-120		%REC	1	5/23/2013 12:40:46 PM	R10831
EPA METHOD 300.0: ANIONS							Analyst: JRR
Chloride	ND	30		mg/Kg	20	5/23/2013 2:01:03 PM	7593

Refer to the QC Summary report and sample login checklist for flagged QC data and preservation information.

Qualifiers:	*	Value exceeds Maximum Contaminant Level.	B	Analyte detected in the associated Method Blank	Page 1 of 3
	E	Value above quantitation range	H	Holding times for preparation or analysis exceeded	
	J	Analyte detected below quantitation limits	ND	Not Detected at the Reporting Limit	
	P	Sample pH greater than 2 for VOA and TOC only.	R	RPD outside accepted recovery limits	
	RL	Reporting Detection Limit	S	Spike Recovery outside accepted recovery limits	

QC SUMMARY REPORT

Hall Environmental Analysis Laboratory, Inc.

WO#: 1305946

30-May-13

Client: Animas Environmental
Project: CoP San Juan 28-4 #33

Sample ID	1305838-002AMS	SampType:	MS	TestCode:	EPA Method 300.0: Anions					
Client ID:	BatchQC	Batch ID:	7593	RunNo:	10859					
Prep Date:	5/23/2013	Analysis Date:	5/23/2013	SeqNo:	306798	Units:	mg/Kg			
Analyte	Result	PQL	SPK value	SPK Ref Val	%REC	LowLimit	HighLimit	%RPD	RPDLimit	Qual
Chloride	110	7.5	15.00	82.69	161	64.4	117			S

Sample ID	1305838-002AMSD	SampType:	MSD	TestCode:	EPA Method 300.0: Anions					
Client ID:	BatchQC	Batch ID:	7593	RunNo:	10859					
Prep Date:	5/23/2013	Analysis Date:	5/23/2013	SeqNo:	306799	Units:	mg/Kg			
Analyte	Result	PQL	SPK value	SPK Ref Val	%REC	LowLimit	HighLimit	%RPD	RPDLimit	Qual
Chloride	97	7.5	15.00	82.69	94.5	64.4	117	9.76	20	

Sample ID	1305877-003AMS	SampType:	MS	TestCode:	EPA Method 300.0: Anions					
Client ID:	BatchQC	Batch ID:	7593	RunNo:	10859					
Prep Date:	5/23/2013	Analysis Date:	5/23/2013	SeqNo:	306817	Units:	mg/Kg			
Analyte	Result	PQL	SPK value	SPK Ref Val	%REC	LowLimit	HighLimit	%RPD	RPDLimit	Qual
Chloride	54	7.5	15.00	43.01	76.6	64.4	117			

Sample ID	1305877-003AMSD	SampType:	MSD	TestCode:	EPA Method 300.0: Anions					
Client ID:	BatchQC	Batch ID:	7593	RunNo:	10859					
Prep Date:	5/23/2013	Analysis Date:	5/23/2013	SeqNo:	306818	Units:	mg/Kg			
Analyte	Result	PQL	SPK value	SPK Ref Val	%REC	LowLimit	HighLimit	%RPD	RPDLimit	Qual
Chloride	55	7.5	15.00	43.01	77.9	64.4	117	0.363	20	

Qualifiers:

- | | |
|--|--|
| * Value exceeds Maximum Contaminant Level. | B Analyte detected in the associated Method Blank |
| E Value above quantitation range | H Holding times for preparation or analysis exceeded |
| J Analyte detected below quantitation limits | ND Not Detected at the Reporting Limit |
| P Sample pH greater than 2 for VOA and TOC only. | R RPD outside accepted recovery limits |
| RL Reporting Detection Limit | S Spike Recovery outside accepted recovery limits |

QC SUMMARY REPORT

Hall Environmental Analysis Laboratory, Inc.

WO#: 1305946

30-May-13

Client: Animas Environmental

Project: CoP San Juan 28-4 #33

Sample ID	MB-7561	SampType:	MBLK		TestCode:	EPA Method 8021B: Volatiles				
Client ID:	PBS	Batch ID:	R10831		RunNo:	10831				
Prep Date:	5/22/2013	Analysis Date:	5/23/2013		SeqNo:	307583	Units:	mg/Kg		
Analyte	Result	PQL	SPK value	SPK Ref Val	%REC	LowLimit	HighLimit	%RPD	RPDLimit	Qual
Benzene	ND	0.050								
Toluene	ND	0.050								
Ethylbenzene	ND	0.050								
Xylenes, Total	ND	0.10								
Surr: 4-Bromofluorobenzene	0.99		1.000		99.1	80	120			

Sample ID: LCS-7561	SampType: LCS		TestCode: EPA Method 8021B: Volatiles							
Client ID: LCSS	Batch ID: R10831		RunNo: 10831							
Prep Date: 5/22/2013	Analysis Date: 5/23/2013		SeqNo: 307584		Units: mg/Kg					
Analyte	Result	PQL	SPK value	SPK Ref Val	%REC	LowLimit	HighLimit	%RPD	RPDLimit	Qual
Benzene	1.1	0.050	1.000	0	110	80	120			
Toluene	1.1	0.050	1.000	0	109	80	120			
Ethylbenzene	1.1	0.050	1.000	0	108	80	120			
Xylenes, Total	3.2	0.10	3.000	0	108	80	120			
Surr: 4-Bromofluorobenzene	1.0		1.000		103	80	120			

Qualifiers:

- | | |
|--|--|
| * Value exceeds Maximum Contaminant Level. | B Analyte detected in the associated Method Blank |
| E Value above quantitation range | H Holding times for preparation or analysis exceeded |
| J Analyte detected below quantitation limits | ND Not Detected at the Reporting Limit |
| P Sample pH greater than 2 for VOA and TOC only. | R RPD outside accepted recovery limits |
| RL Reporting Detection Limit | S Spike Recovery outside accepted recovery limits |



Hall Environmental Analysis Laboratory
4901 Hawkins NE
Albuquerque, NM 87106
TEL: 505-345-3975 FAX: 505-345-4107
Website: www.hallenvironmental.com

Sample Log-In Check List

Client Name: Animas Environmental

Work Order Number: 1305946

ReptNo: 1

Received by/date

Am

05/23/2013

Logged By: Ashley Gallegos

5/23/2013 10:00:00 AM

Completed By: Ashley Gallegos

5/23/2013 10:29:23 AM

Reviewed By:

mg

05/23/13

Chain of Custody

- | | | | |
|--|---------|----|---------------|
| 1. Custody seals intact on sample bottles? | Yes | No | Not Present ✓ |
| 2. Is Chain of Custody complete? | Yes ✓ | No | Not Present |
| 3. How was the sample delivered? | Courier | | |

Log In

- | | | | |
|---|-------|------|--|
| 4. Was an attempt made to cool the samples? | Yes ✓ | No | NA |
| 5. Were all samples received at a temperature of >0° C to 6.0°C | Yes ✓ | No | NA |
| 6. Sample(s) in proper container(s)? | Yes ✓ | No | |
| 7. Sufficient sample volume for indicated test(s)? | Yes ✓ | No | |
| 8. Are samples (except VOA and ONG) properly preserved? | Yes ✓ | No | |
| 9. Was preservative added to bottles? | Yes | No ✓ | NA |
| 10. VOA vials have zero headspace? | Yes | No | No VOA Vials ✓ |
| 11. Were any sample containers received broken? | Yes | No ✓ | # of preserved bottles checked for pH: |
| 12. Does paperwork match bottle labels?
(Note discrepancies on chain of custody) | Yes ✓ | No | (<2 or >12 unless noted) |
| 13. Are matrices correctly identified on Chain of Custody? | Yes ✓ | No | Adjusted? |
| 14. Is it clear what analyses were requested? | Yes ✓ | No | |
| 15. Were all holding times able to be met?
(If no, notify customer for authorization.) | Yes ✓ | No | Checked by: |

Special Handling (if applicable)

- | | | | |
|---|-----|----|------|
| 16. Was client notified of all discrepancies with this order? | Yes | No | NA ✓ |
|---|-----|----|------|

Person Notified:

Date:

By Whom:

Via:

eMail

Phone

Fax

In Person

Regarding:

Client Instructions:

17. Additional remarks:

18. Cooler Information

Cooler No	Temp °C	Condition	Seal Intact	Seal No	Seal Date	Signed By
1	1.1	Good	Yes			

Chain-of-Custody Record

Client: Animas Environmental Services

Mailing Address: 624 E. Comanche

Farmington NM 87401

Phone #: 505-564-2281

email or Fax#:

QA/QC Package:

☐ Standard ☐ Level 4 (Full Validation)

Accreditation

☐ NELAP ☐ Other☐ EDD (Type)

1	2	3	4	5	6	7	8	9	10	11	12	13	14	15	16	17	18	19	20	21	22	23	24	25	26	27	28	29	30	31	32	33	34	35	36	37	38	39	40	41	42	43	44	45	46	47	48	49	50	51	52	53	54	55	56	57	58	59	60	61	62	63	64	65	66	67	68	69	70	71	72	73	74	75	76	77	78	79	80	81	82	83	84	85	86	87	88	89	90	91	92	93	94	95	96	97	98	99	100	101	102	103	104	105	106	107	108	109	110	111	112	113	114	115	116	117	118	119	120	121	122	123	124	125	126	127	128	129	130	131	132	133	134	135	136	137	138	139	140	141	142	143	144	145	146	147	148	149	150	151	152	153	154	155	156	157	158	159	160	161	162	163	164	165	166	167	168	169	170	171	172	173	174	175	176	177	178	179	180	181	182	183	184	185	186	187	188	189	190	191	192	193	194	195	196	197	198	199	200	201	202	203	204	205	206	207	208	209	210	211	212	213	214	215	216	217	218	219	220	221	222	223	224	225	226	227	228	229	230	231	232	233	234	235	236	237	238	239	240	241	242	243	244	245	246	247	248	249	250	251	252	253	254	255	256	257	258	259	260	261	262	263	264	265	266	267	268	269	270	271	272	273	274	275	276	277	278	279	280	281	282	283	284	285	286	287	288	289	290	291	292	293	294	295	296	297	298	299	300	301	302	303	304	305	306	307	308	309	310	311	312	313	314	315	316	317	318	319	320	321	322	323	324	325	326	327	328	329	330	331	332	333	334	335	336	337	338	339	340	341	342	343	344	345	346	347	348	349	350	351	352	353	354	355	356	357	358	359	360	361	362	363	364	365	366	367	368	369	370	371	372	373	374	375	376	377	378	379	380	381	382	383	384	385	386	387	388	389	390	391	392	393	394	395	396	397	398	399	400	401	402	403	404	405	406	407	408	409	410	411	412	413	414	415	416	417	418	419	420	421	422	423	424	425	426	427	428	429	430	431	432	433	434	435	436	437	438	439	440	441	442	443	444	445	446	447	448	449	450	451	452	453	454	455	456	457	458	459	460	461	462	463	464	465	466
---	---	---	---	---	---	---	---	---	----	----	----	----	----	----	----	----	----	----	----	----	----	----	----	----	----	----	----	----	----	----	----	----	----	----	----	----	----	----	----	----	----	----	----	----	----	----	----	----	----	----	----	----	----	----	----	----	----	----	----	----	----	----	----	----	----	----	----	----	----	----	----	----	----	----	----	----	----	----	----	----	----	----	----	----	----	----	----	----	----	----	----	----	----	----	----	----	----	----	-----	-----	-----	-----	-----	-----	-----	-----	-----	-----	-----	-----	-----	-----	-----	-----	-----	-----	-----	-----	-----	-----	-----	-----	-----	-----	-----	-----	-----	-----	-----	-----	-----	-----	-----	-----	-----	-----	-----	-----	-----	-----	-----	-----	-----	-----	-----	-----	-----	-----	-----	-----	-----	-----	-----	-----	-----	-----	-----	-----	-----	-----	-----	-----	-----	-----	-----	-----	-----	-----	-----	-----	-----	-----	-----	-----	-----	-----	-----	-----	-----	-----	-----	-----	-----	-----	-----	-----	-----	-----	-----	-----	-----	-----	-----	-----	-----	-----	-----	-----	-----	-----	-----	-----	-----	-----	-----	-----	-----	-----	-----	-----	-----	-----	-----	-----	-----	-----	-----	-----	-----	-----	-----	-----	-----	-----	-----	-----	-----	-----	-----	-----	-----	-----	-----	-----	-----	-----	-----	-----	-----	-----	-----	-----	-----	-----	-----	-----	-----	-----	-----	-----	-----	-----	-----	-----	-----	-----	-----	-----	-----	-----	-----	-----	-----	-----	-----	-----	-----	-----	-----	-----	-----	-----	-----	-----	-----	-----	-----	-----	-----	-----	-----	-----	-----	-----	-----	-----	-----	-----	-----	-----	-----	-----	-----	-----	-----	-----	-----	-----	-----	-----	-----	-----	-----	-----	-----	-----	-----	-----	-----	-----	-----	-----	-----	-----	-----	-----	-----	-----	-----	-----	-----	-----	-----	-----	-----	-----	-----	-----	-----	-----	-----	-----	-----	-----	-----	-----	-----	-----	-----	-----	-----	-----	-----	-----	-----	-----	-----	-----	-----	-----	-----	-----	-----	-----	-----	-----	-----	-----	-----	-----	-----	-----	-----	-----	-----	-----	-----	-----	-----	-----	-----	-----	-----	-----	-----	-----	-----	-----	-----	-----	-----	-----	-----	-----	-----	-----	-----	-----	-----	-----	-----	-----	-----	-----	-----	-----	-----	-----	-----	-----	-----	-----	-----	-----	-----	-----	-----	-----	-----	-----	-----	-----	-----	-----	-----	-----	-----	-----	-----	-----	-----	-----	-----	-----	-----	-----	-----	-----	-----	-----	-----	-----	-----	-----	-----	-----	-----	-----	-----	-----	-----	-----	-----	-----	-----	-----	-----	-----	-----	-----	-----	-----	-----	-----	-----	-----	-----	-----	-----	-----	-----	-----	-----	-----	-----

Date	Time	Matrix	Sample Request ID
------	------	--------	-------------------

Matrix

Sample Request ID

5/22/13 172

1.5

25

Date:	Time:
-------	-------

Reinhold Messner

Industry

Date Time

Time

Date: _____ Time: _____

Reinquished by:

Received by

Date	Time
------	------

Time

—

三十一

2

3

2

Remarks: Bill to ConocoPhillips

WO: 10336733

Activity: 0200

Supervisor: Freddie Archer

Wm D: BOWALE

Ordered by: Freddie
MARTIN

Ans: 25

If necessary, samples submitted to Hall Environmental may be subcontracted to other accredited laboratories. This serves as notice of this possibility. Any sub-contracted data will be clearly notated on the analytical report.

District I
1625 N. French Dr., Hobbs, NM 88240
District II
1301 W. Grand Avenue, Artesia, NM 88210
District III
1000 Rio Brazos Road, Aztec, NM 87410
District IV
1220 S. St. Francis Dr., Santa Fe, NM 87505

State of New Mexico
Energy Minerals and Natural Resources
Oil Conservation Division
1220 South St. Francis Dr.
Santa Fe, NM 87505

Form C-141
Revised October 10, 2003

Submit 2 Copies to appropriate
District Office in accordance
with Rule 116 on back
side of form

Release Notification and Corrective Action

OPERATOR

☐ Initial Report ☒ Final Report

Name of Company Burlington Resources	Contact Kenny Davis
Address 3401 East 30th St, Farmington, NM	Telephone No. (505) 599-4045
Facility Name: San Juan 28-4 Unit 33	Facility Type: Gas Well

Surface Owner Federal	Mineral Owner Federal	Lease No. SF-079731
------------------------------	------------------------------	----------------------------

LOCATION OF RELEASE

Unit Letter M	Section 33	Township 28N	Range 4W	Feet from the 890	North/South Line South	Feet from the 990	East/West Line West	County Rio Arriba
-------------------------	----------------------	------------------------	--------------------	-----------------------------	----------------------------------	-----------------------------	-------------------------------	-----------------------------

Latitude **36.61146700** Longitude **107.26120000**

NATURE OF RELEASE

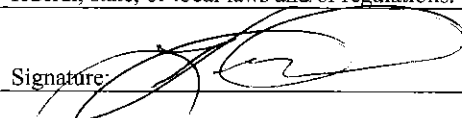
Type of Release BGT Closure Summary	Volume of Release N/A	Volume Recovered N/A
Source of Release: NONE	Date and Hour of Occurrence N/A	Date and Hour of Discovery N/A
Was Immediate Notice Given? <input type="checkbox"/> Yes <input type="checkbox"/> No <input checked="" type="checkbox"/> Not Required	If YES, To Whom? N/A	
By Whom? N/A	Date and Hour N/A	
Was a Watercourse Reached? N/A <input type="checkbox"/> Yes <input checked="" type="checkbox"/> No	If YES, Volume Impacting the Watercourse. N/A	

If a Watercourse was Impacted, Describe Fully.*
N/A

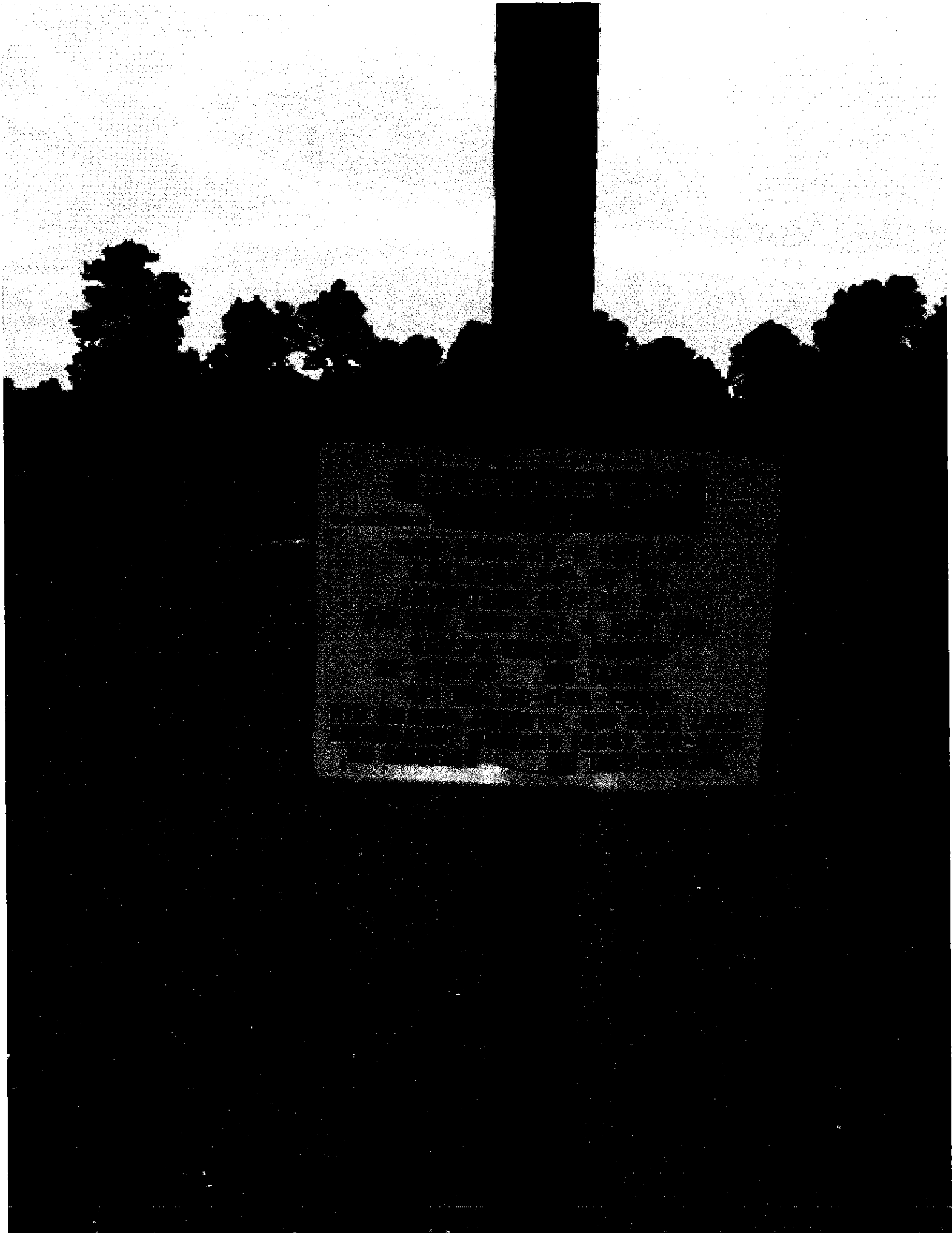
Describe Cause of Problem and Remedial Action Taken.*
N/A

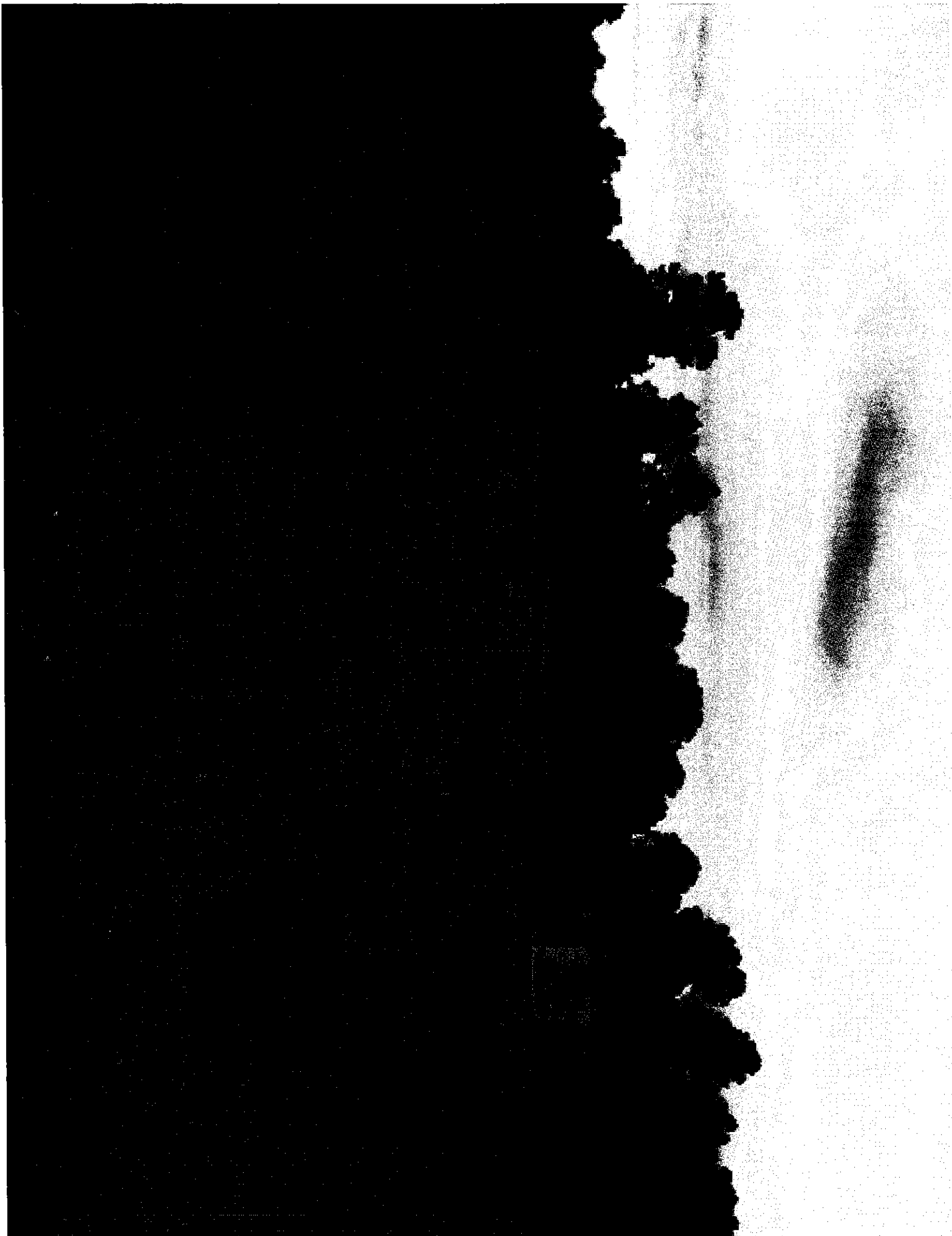
Describe Area Affected and Cleanup Action Taken.*
BGT Closure: NO RELEASE FOUND UPON REMOVAL

I hereby certify that the information given above is true and complete to the best of my knowledge and understand that pursuant to NMOCD rules and regulations all operators are required to report and/or file certain release notifications and perform corrective actions for releases which may endanger public health or the environment. The acceptance of a C-141 report by the NMOCD marked as "Final Report" does not relieve the operator of liability should their operations have failed to adequately investigate and remediate contamination that pose a threat to ground water, surface water, human health or the environment. In addition, NMOCD acceptance of a C-141 report does not relieve the operator of responsibility for compliance with any other federal, state, or local laws and/or regulations.

Signature: 	OIL CONSERVATION DIVISION		
Printed Name: Kenny Davis	Approved by District Supervisor:		
Title: Staff Regulatory Technician	Approval Date:	Expiration Date:	
E-mail Address: Kenny.r.davis@conocophillips.com	Conditions of Approval:		Attached <input type="checkbox"/>
Date: 12/4/14 Phone: (505) 599-4045			

* Attach Additional Sheets If Necessary





BGT Closure Packet Check List - Well Name: 28-4 33
 (S:\gsREG\Regulatory Pits (ADM090-12yrs)\New Requirements\Checklists\BGT Closure Check List)

12/4/14 12/15/14 ☒ Below-grade Tank Closure Report from HSE
 (S:\gsHSE\Element 6-Programs & Procedures\Underground Storage Tanks, Vessels, & Pits\Tank and Line
 Test Results HSE800 E+20Y\Below Grade Tanks\ZZ-BGT Closure Reports (there are two folders-Below
 Grade Tanks & ZZ-BGT Closure Reports - check in both places for documents)

12/4/14 12/15/14 ☒ Sampling (S:\gsHSE\Element 6-Programs & Procedures\Underground Storage Tanks, Vessels, &
 Pit, Vessel and Line Test Results HSE800 E+20Y\Below Grade Tanks\ZZ-BGT Closure Reports (there are
 two folders-Below Grade Tanks & ZZ-BGT Closure Reports - check in both places for documents)

NO RECORD
FOUND Proof of Closure (72 Hour Notice) e-mail to NMOCD E-mail notice located @
 S:\gsREG\WELLS LIST\WELL NAME\72 Hour Notice BGT Closure (for post 2008 BGT's.) or
 research through Jamie's Folder in LRM (subfolders designated) - some have been moved to Wells
 List or Regulatory Pits\New Requirements\BGT_Closure Report_e-mails\some don't exist at all.

NO RECORD
FOUND Surface Owner Notification -(S:\gsREG\Wells List\Well Name) Saved copy
 of e-mail you sent

12/4/14 12/15/14 ☒ Pictures (Pit Closure Form located @ S:\gsProj\issjd-copy\Construction\Open Pit Inspections
 (BGF170). Print the reclamation form for reference of Closure Date for C144 (use Start of
 Reclamation as the Closure Date)-If Reclamation has not taken place, we only need a picture of when
 they backfilled after removing the BGT.

12/4/14 12/15/14 ☒ C144 with correct operator, well name, lat/long., surface owner
 (S:\gsREG\Regulatory Pits (ADM090-12yrs)\New Requirements\C-144 Forms\Pre 2013 C144 Forms\BGT
 Closure (OLD)- Closure date for BGT's that have not had reclamation work done would be the date the
 samples were taken when BGT was removed.

12/4/14 12/15/14 ☒ Below-grade Tank Closure Report Summary w/ C-141
 (S:\gsREG\Regulatory Pits (ADM090-12yrs)\New Requirements\BGT Closure Summary Report
 Templates\Normal or Without Reclamation
 C-141 found @ S:\gsHSE\Element 6-Programs & Procedures\Underground Storage Tanks, Vessels, &
 Pits\Tank and Line Test Results HSE800 E+20Y\Below Grade Tanks

Order for submitting the packet

1. C144 Form
2. BGT Closure Report Summary
3. Proof of Closure (72 Hour Notice) e-mail to NMOCD
4. BGT Closure Report from HSE & C141 Form
5. Sampling Results
6. Pictures

12/11/14
 OGD Approval Submit Rec'd
 Scanned to DSM/Walsh

The items on this checklist need to be checked off and initialed by the person completing the
 work and must accompany the C-144 Closure Packet when it is handed off for QC and the QC
 person must initial it as well. This checklist is to be scanned into Wells List & DSM as part of
 the BGT Closure Packet.

Pre-BGT Closure Check List - Well Name: 28-4 33
(S:\gsREG\Regulatory Pits (ADM090-12yrs)\New Requirements\Checklists\Pre-BGT Closure Check List)

NO RECORD
- HISTORICAL

E-Mail received from O&M for P&A Facility Strip Notice
(Save this e-mail in the Wells List - S:\gsREG\1 Wells List under well name)

N/A

Verify Twinned Location (Check in DSM under General Tab for notes about twinned well or check 1st Delivery Database under Facilities located on MPAD)

12/4/14

N/A

Call or e-mail Area MSO (Ask them to verify if there is a BGT on location and have them send you a picture to verify. Save the picture - S:\gsREG\1 Wells List under well name)

12/11/14

N/A

Request Closure Plan Approval from Santa Fe - (If this is a historic BGT Closure and the well is on the BGT Master List an e-mail is sent to Leonard Lowe @ Leonrd.Lowe@state.nm.us)

NO RECORD
FOUND

Send 72-hour closure notification to NMOCD (In the e-mail received from O&M there is an 'estimated start date', use this start date when sending your 72-hour but not more than one week notice to NMOCD)

NO RECORD
FOUND

Send 72-hour Surface Owner Notification (If surface owner is BLM/Tribal then we send an e-mail notification to Mark Kelly and Shari Ketchum giving notification that a BGT will be closed) (Note: previously we were submitting the 'original' surface owner notification that was submitted with the Permit; however, that part of the process was incorrect according to Cory @ NMOCD and going forward we will need to send this notification) For the Historic Closures, we will be stating that the notification cannot be found in our Closure Summary Report.

The items on this checklist need to be checked off and initialed by the person completing the work and must accompany the C-144 Closure Packet when it is handed off for QC and the QC person must initial it as well. This checklist is to be scanned into Wells List & DSM as part of the BGT Closure Packet.