

District I
1625 N. French Dr., Hobbs, NM 88240
District II
811 S. First St., Artesia, NM 88210
District III
1000 Rio Brazos Road, Aztec, NM 87410
District IV
1220 S. St. Francis Dr., Santa Fe, NM 87505

State of New Mexico
Energy Minerals and Natural Resources
Department
Oil Conservation Division
1220 South St. Francis Dr.
Santa Fe, NM 87505

Form C-144
Revised June 6, 2013

For temporary pits, below-grade tanks, and multi-well fluid management pits, submit to the appropriate NMOCD District Office.
For permanent pits submit to the Santa Fe Environmental Bureau office and provide a copy to the appropriate NMOCD District Office.

12908
45-30600

Pit, Below-Grade Tank, or
Proposed Alternative Method Permit or Closure Plan Application

RECEIVED BY OCD
3-12-2015

Type of action: ☐ Below grade tank registration
☐ Permit of a pit or proposed alternative method
☒ Closure of a pit, below-grade tank, or proposed alternative method
☐ Modification to an existing permit/or registration
☐ Closure plan only submitted for an existing permitted or non-permitted pit, below-grade tank, or proposed alternative method

Instructions: Please submit one application (Form C-144) per individual pit, below-grade tank or alternative request

Please be advised that approval of this request does not relieve the operator of liability should operations result in pollution of surface water, ground water or the environment. Nor does approval relieve the operator of its responsibility to comply with any other applicable governmental authority's rules, regulations or ordinances.

1. Operator: Burlington Resources ✓ OGRID #: 14538
Address: PO BOX 4289, Farmington, NM 87499
Facility or well name: Maddox D Federal Com 100
API Number: 3004530600 ✓ OCD Permit Number: _____
U/L or Qtr/Qtr B (NWNE) ✓ Section 23 ✓ Township 30N ✓ Range 13W ✓ County: San Juan ✓
Center of Proposed Design: Latitude 36.80260000 ✓ N Longitude -108.17059000 ✓ W NAD: ☒ 1927 ☐ 1983
Surface Owner: ☒ Federal ☐ State ☐ Private ☐ Tribal Trust or Indian Allotment

2. ☐ Pit: Subsection F, G or J of 19.15.17.11 NMAC
Temporary: ☐ Drilling ☐ Workover
☐ Permanent ☐ Emergency ☐ Cavitation ☐ P&A ☐ Multi-Well Fluid Management Low Chloride Drilling Fluid ☐ yes ☐ no
☐ Lined ☐ Unlined Liner type: Thickness _____ mil ☐ LLDPE ☐ HDPE ☐ PVC ☐ Other _____
☐ String-Reinforced
Liner Seams: ☐ Welded ☐ Factory ☐ Other _____ Volume: _____ bbl Dimensions: L _____ x W _____ x D _____

3. ☒ Below-grade tank: Subsection I of 19.15.17.11 NMAC
Volume: 120 bbl Type of fluid: Produced Water
Tank Construction material: Metal
☐ Secondary containment with leak detection ☒ Visible sidewalls, liner, 6-inch lift and automatic overflow shut-off
☐ Visible sidewalls and liner ☐ Visible sidewalls only ☐ Other _____
Liner type: Thickness 45 mil ☐ HDPE ☐ PVC ☒ Other LLDPE

4. ☐ Alternative Method:
Submittal of an exception request is required. Exceptions must be submitted to the Santa Fe Environmental Bureau office for consideration of approval.

5. **Fencing:** Subsection D of 19.15.17.11 NMAC (Applies to permanent pits, temporary pits, and below-grade tanks)
☐ Chain link, six feet in height, two strands of barbed wire at top (Required if located within 1000 feet of a permanent residence, school, hospital, institution or church)
☐ Four foot height, four strands of barbed wire evenly spaced between one and four feet
☐ Alternate. Please specify _____

6.

Netting: Subsection E of 19.15.17.11 NMAC (*Applies to permanent pits and permanent open top tanks*)

☐ Screen ☐ Netting ☐ Other _____

☐ Monthly inspections (If netting or screening is not physically feasible)

7.

Signs: Subsection C of 19.15.17.11 NMAC

☐ 12"x 24", 2" lettering, providing Operator's name, site location, and emergency telephone numbers

☐ Signed in compliance with 19.15.16.8 NMAC

8.

Variances and Exceptions:

Justifications and/or demonstrations of equivalency are required. Please refer to 19.15.17 NMAC for guidance.

Please check a box if one or more of the following is requested, if not leave blank:

☐ Variance(s): Requests must be submitted to the appropriate division district for consideration of approval.

☐ Exception(s): Requests must be submitted to the Santa Fe Environmental Bureau office for consideration of approval.

9.

Siting Criteria (regarding permitting): 19.15.17.10 NMAC

Instructions: The applicant must demonstrate compliance for each siting criteria below in the application. Recommendations of acceptable source material are provided below. Siting criteria does not apply to drying pads or above-grade tanks.

General siting

Ground water is less than 25 feet below the bottom of a low chloride temporary pit or below-grade tank.

- ☐ NM Office of the State Engineer - iWATERS database search; ☐ USGS; ☒ Data obtained from nearby wells

Ground water is less than 50 feet below the bottom of a Temporary pit, permanent pit, or Multi-Well Fluid Management pit.

NM Office of the State Engineer - iWATERS database search; USGS; Data obtained from nearby wells

Within incorporated municipal boundaries or within a defined municipal fresh water well field covered under a municipal ordinance adopted pursuant to NMSA 1978, Section 3-27-3, as amended. (**Does not apply to below grade tanks**)

- Written confirmation or verification from the municipality; Written approval obtained from the municipality

Within the area overlying a subsurface mine. (**Does not apply to below grade tanks**)

- Written confirmation or verification or map from the NM EMNRD-Mining and Mineral Division

Within an unstable area. (**Does not apply to below grade tanks**)

- Engineering measures incorporated into the design; NM Bureau of Geology & Mineral Resources; USGS; NM Geological Society; Topographic map

Within a 100-year floodplain. (**Does not apply to below grade tanks**)

- FEMA map

Below Grade Tanks

Within 100 feet of a continuously flowing watercourse, significant watercourse, lake bed, sinkhole, wetland or playa lake (measured from the ordinary high-water mark).

- Topographic map; Visual inspection (certification) of the proposed site

Within 200 horizontal feet of a spring or a fresh water well used for public or livestock consumption;

- NM Office of the State Engineer - iWATERS database search; Visual inspection (certification) of the proposed site

Temporary Pit using Low Chloride Drilling Fluid (maximum chloride content 15,000 mg/liter)

Within 100 feet of a continuously flowing watercourse, or any other significant watercourse or within 200 feet of any lakebed, sinkhole, or playa lake (measured from the ordinary high-water mark). (Applies to low chloride temporary pits.)

- Topographic map; Visual inspection (certification) of the proposed site

Within 300 feet from a occupied permanent residence, school, hospital, institution, or church in existence at the time of initial application.

- Visual inspection (certification) of the proposed site; Aerial photo; Satellite image

Within 200 horizontal feet of a spring or a private, domestic fresh water well used by less than five households for domestic or stock watering purposes, or 300 feet of any other fresh water well or spring, in existence at the time of the initial application.
NM Office of the State Engineer - iWATERS database search; Visual inspection (certification) of the proposed site

☐ Yes ☒ No
☐ NA

☐ Yes ☐ No
☒ NA

☐ Yes ☐ No

☐ Yes ☐ No

☐ Yes ☐ No

☐ Yes ☐ No

☐ Yes ☒ No

☐ Yes ☒ No

☐ Yes ☐ No

☐ Yes ☐ No

☐ Yes ☐ No

Within 100 feet of a wetland.
- US Fish and Wildlife Wetland Identification map; Topographic map; Visual inspection (certification) of the proposed site

☐ Yes ☐ No

Temporary Pit Non-low chloride drilling fluid

Within 300 feet of a continuously flowing watercourse, or any other significant watercourse, or within 200 feet of any lakebed, sinkhole, or playa lake (measured from the ordinary high-water mark).

- Topographic map; Visual inspection (certification) of the proposed site

☐ Yes ☐ No

Within 300 feet from a permanent residence, school, hospital, institution, or church in existence at the time of initial application.

- Visual inspection (certification) of the proposed site; Aerial photo; Satellite image

☐ Yes ☐ No

Within 500 horizontal feet of a spring or a private, domestic fresh water well used by less than five households for domestic or stock watering purposes, or 1000 feet of any other fresh water well or spring, in the existence at the time of the initial application;

- NM Office of the State Engineer - iWATERS database search; Visual inspection (certification) of the proposed site

☐ Yes ☐ No

Within 300 feet of a wetland.

- US Fish and Wildlife Wetland Identification map; Topographic map; Visual inspection (certification) of the proposed site

☐ Yes ☐ No

Permanent Pit or Multi-Well Fluid Management Pit

Within 300 feet of a continuously flowing watercourse, or 200 feet of any other significant watercourse, or lakebed, sinkhole, or playa lake (measured from the ordinary high-water mark).

- Topographic map; Visual inspection (certification) of the proposed site

☐ Yes ☐ No

Within 1000 feet from a permanent residence, school, hospital, institution, or church in existence at the time of initial application.

- Visual inspection (certification) of the proposed site; Aerial photo; Satellite image

☐ Yes ☐ No

Within 500 horizontal feet of a spring or a fresh water well used for domestic or stock watering purposes, in existence at the time of initial application.

- NM Office of the State Engineer - iWATERS database search; Visual inspection (certification) of the proposed site

☐ Yes ☐ No

Within 500 feet of a wetland.

- US Fish and Wildlife Wetland Identification map; Topographic map; Visual inspection (certification) of the proposed site

☐ Yes ☐ No

10.

Temporary Pits, Emergency Pits, and Below-grade Tanks Permit Application Attachment Checklist: Subsection B of 19.15.17.9 NMAC

Instructions: Each of the following items must be attached to the application. Please indicate, by a check mark in the box, that the documents are attached.

- ☐ Hydrogeologic Report (Below-grade Tanks) - based upon the requirements of Paragraph (4) of Subsection B of 19.15.17.9 NMAC
- ☐ Hydrogeologic Data (Temporary and Emergency Pits) - based upon the requirements of Paragraph (2) of Subsection B of 19.15.17.9 NMAC
- ☐ Siting Criteria Compliance Demonstrations - based upon the appropriate requirements of 19.15.17.10 NMAC
- ☐ Design Plan - based upon the appropriate requirements of 19.15.17.11 NMAC
- ☐ Operating and Maintenance Plan - based upon the appropriate requirements of 19.15.17.12 NMAC
- ☐ Closure Plan (Please complete Boxes 14 through 18, if applicable) - based upon the appropriate requirements of Subsection C of 19.15.17.9 NMAC and 19.15.17.13 NMAC

☐ Previously Approved Design (attach copy of design) API Number: _____ or Permit Number: _____

Multi-Well Fluid Management Pit Checklist: Subsection B of 19.15.17.9 NMAC

Instructions: Each of the following items must be attached to the application. Please indicate, by a check mark in the box, that the documents are attached.

- ☐ Design Plan - based upon the appropriate requirements of 19.15.17.11 NMAC
- ☐ Operating and Maintenance Plan - based upon the appropriate requirements of 19.15.17.12 NMAC
- ☐ A List of wells with approved application for permit to drill associated with the pit.
- ☐ Closure Plan (Please complete Boxes 14 through 18, if applicable) - based upon the appropriate requirements of Subsection C of 19.15.17.9 NMAC and 19.15.17.13 NMAC
- ☐ Hydrogeologic Data - based upon the requirements of Paragraph (4) of Subsection B of 19.15.17.9 NMAC
- ☐ Siting Criteria Compliance Demonstrations - based upon the appropriate requirements of 19.15.17.10 NMAC

☐ Previously Approved Design (attach copy of design) API Number: _____ or Permit Number: _____

12.

Permanent Pits Permit Application Checklist: Subsection B of 19.15.17.9 NMAC

Instructions: Each of the following items must be attached to the application. Please indicate, by a check mark in the box, that the documents are attached.

- ☐ Hydrogeologic Report - based upon the requirements of Paragraph (1) of Subsection B of 19.15.17.9 NMAC
☐ Siting Criteria Compliance Demonstrations - based upon the appropriate requirements of 19.15.17.10 NMAC
☐ Climatological Factors Assessment
☐ Certified Engineering Design Plans - based upon the appropriate requirements of 19.15.17.11 NMAC
☐ Dike Protection and Structural Integrity Design - based upon the appropriate requirements of 19.15.17.11 NMAC
☐ Leak Detection Design - based upon the appropriate requirements of 19.15.17.11 NMAC
☐ Liner Specifications and Compatibility Assessment - based upon the appropriate requirements of 19.15.17.11 NMAC
☐ Quality Control/Quality Assurance Construction and Installation Plan
☐ Operating and Maintenance Plan - based upon the appropriate requirements of 19.15.17.12 NMAC
☐ Freeboard and Overtopping Prevention Plan - based upon the appropriate requirements of 19.15.17.11 NMAC
☐ Nuisance or Hazardous Odors, including H₂S, Prevention Plan
☐ Emergency Response Plan
☐ Oil Field Waste Stream Characterization
☐ Monitoring and Inspection Plan
☐ Erosion Control Plan
☐ Closure Plan - based upon the appropriate requirements of Subsection C of 19.15.17.9 NMAC and 19.15.17.13 NMAC

13.

Proposed Closure: 19.15.17.13 NMAC

Instructions: Please complete the applicable boxes, Boxes 14 through 18, in regards to the proposed closure plan.

- Type: ☐ Drilling ☐ Workover ☐ Emergency ☐ Cavitation ☐ P&A ☐ Permanent Pit ☒ Below-grade Tank ☐ Multi-well Fluid Management Pit
☐ Alternative
- Proposed Closure Method: ☒ Waste Excavation and Removal
☐ Waste Removal (Closed-loop systems only)
☐ On-site Closure Method (Only for temporary pits and closed-loop systems)
☐ In-place Burial ☐ On-site Trench Burial
☐ Alternative Closure Method

14.

Waste Excavation and Removal Closure Plan Checklist: (19.15.17.13 NMAC) **Instructions:** Each of the following items must be attached to the closure plan. Please indicate, by a check mark in the box, that the documents are attached.

- ☒ Protocols and Procedures - based upon the appropriate requirements of 19.15.17.13 NMAC
☒ Confirmation Sampling Plan (if applicable) - based upon the appropriate requirements of Subsection C of 19.15.17.13 NMAC
☒ Disposal Facility Name and Permit Number (for liquids, drilling fluids and drill cuttings)
☒ Soil Backfill and Cover Design Specifications - based upon the appropriate requirements of Subsection H of 19.15.17.13 NMAC
☒ Re-vegetation Plan - based upon the appropriate requirements of Subsection H of 19.15.17.13 NMAC
☒ Site Reclamation Plan - based upon the appropriate requirements of Subsection H of 19.15.17.13 NMAC

15. Siting Criteria (regarding on-site closure methods only): 19.15.17.10 NMAC

Instructions: Each siting criteria requires a demonstration of compliance in the closure plan. Recommendations of acceptable source material are provided below. Requests regarding changes to certain siting criteria require justifications and/or demonstrations of equivalency. Please refer to 19.15.17.10 NMAC for guidance.

Ground water is less than 25 feet below the bottom of the buried waste. - NM Office of the State Engineer - iWATERS database search; USGS; Data obtained from nearby wells	<input type="checkbox"/> Yes <input type="checkbox"/> No <input type="checkbox"/> NA
Ground water is between 25-50 feet below the bottom of the buried waste - NM Office of the State Engineer - iWATERS database search; USGS; Data obtained from nearby wells	<input type="checkbox"/> Yes <input type="checkbox"/> No <input type="checkbox"/> NA
Ground water is more than 100 feet below the bottom of the buried waste. - NM Office of the State Engineer - iWATERS database search; USGS; Data obtained from nearby wells	<input type="checkbox"/> Yes <input type="checkbox"/> No <input type="checkbox"/> NA
Within 100 feet of a continuously flowing watercourse, or 200 feet of any other significant watercourse, lakebed, sinkhole, or playa lake (measured from the ordinary high-water mark). - Topographic map; Visual inspection (certification) of the proposed site	<input type="checkbox"/> Yes <input type="checkbox"/> No
Within 300 feet from a permanent residence, school, hospital, institution, or church in existence at the time of initial application. - Visual inspection (certification) of the proposed site; Aerial photo; Satellite image	<input type="checkbox"/> Yes <input type="checkbox"/> No
Within 300 horizontal feet of a private, domestic fresh water well or spring used for domestic or stock watering purposes, in existence at the time of initial application. - NM Office of the State Engineer - iWATERS database; Visual inspection (certification) of the proposed site	<input type="checkbox"/> Yes <input type="checkbox"/> No
Written confirmation or verification from the municipality; Written approval obtained from the municipality	<input type="checkbox"/> Yes <input type="checkbox"/> No
Within 300 feet of a wetland. US Fish and Wildlife Wetland Identification map; Topographic map; Visual inspection (certification) of the proposed site	<input type="checkbox"/> Yes <input type="checkbox"/> No
Within incorporated municipal boundaries or within a defined municipal fresh water well field covered under a municipal ordinance	

adopted pursuant to NMSA 1978, Section 3-27-3, as amended.

- Written confirmation or verification from the municipality; Written approval obtained from the municipality

☐ Yes ☐ No

Within the area overlying a subsurface mine.

- Written confirmation or verification or map from the NM EMNRD-Mining and Mineral Division

☐ Yes ☐ No

Within an unstable area.

- Engineering measures incorporated into the design; NM Bureau of Geology & Mineral Resources; USGS; NM Geological Society; Topographic map

☐ Yes ☐ No

Within a 100-year floodplain.

- FEMA map

☐ Yes ☐ No

16.

On-Site Closure Plan Checklist: (19.15.17.13 NMAC) *Instructions: Each of the following items must be attached to the closure plan. Please indicate, by a check mark in the box, that the documents are attached.*

- ☐ Siting Criteria Compliance Demonstrations - based upon the appropriate requirements of 19.15.17.10 NMAC
- ☐ Proof of Surface Owner Notice - based upon the appropriate requirements of Subsection E of 19.15.17.13 NMAC
- ☐ Construction/Design Plan of Burial Trench (if applicable) based upon the appropriate requirements of Subsection K of 19.15.17.11 NMAC
- ☐ Construction/Design Plan of Temporary Pit (for in-place burial of a drying pad) - based upon the appropriate requirements of 19.15.17.11 NMAC
- ☐ Protocols and Procedures - based upon the appropriate requirements of 19.15.17.13 NMAC
- ☐ Confirmation Sampling Plan (if applicable) - based upon the appropriate requirements of 19.15.17.13 NMAC
- ☐ Waste Material Sampling Plan - based upon the appropriate requirements of 19.15.17.13 NMAC
- ☐ Disposal Facility Name and Permit Number (for liquids, drilling fluids and drill cuttings or in case on-site closure standards cannot be achieved)
- ☐ Soil Cover Design - based upon the appropriate requirements of Subsection H of 19.15.17.13 NMAC
- ☐ Re-vegetation Plan - based upon the appropriate requirements of Subsection H of 19.15.17.13 NMAC
- ☐ Site Reclamation Plan - based upon the appropriate requirements of Subsection H of 19.15.17.13 NMAC

17.

Operator Application Certification:

I hereby certify that the information submitted with this application is true, accurate and complete to the best of my knowledge and belief.

Name (Print): _____ Title: _____

Signature: _____ Date: _____

e-mail address: _____ Telephone: _____

18.

OCD Approval: ☐ Permit Application (including closure plan) ☒ Closure Plan (only) ☐ OCD Conditions (see attachment)

OCD Representative Signature:  Approval Date: Jun 09, 2015
Title: Environmental Specialist OCD Permit Number: _____

19.

Closure Report (required within 60 days of closure completion): 19.15.17.13 NMAC

Instructions: Operators are required to obtain an approved closure plan prior to implementing any closure activities and submitting the closure report. The closure report is required to be submitted to the division within 60 days of the completion of the closure activities. Please do not complete this section of the form until an approved closure plan has been obtained and the closure activities have been completed.

☒ Closure Completion Date: 3/6/13

20.

Closure Method:

☒ Waste Excavation and Removal ☐ On-Site Closure Method ☐ Alternative Closure Method ☐ Waste Removal (Closed-loop systems only)
☐ If different from approved plan, please explain.

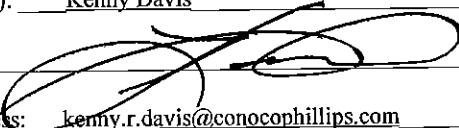
21.

Closure Report Attachment Checklist: *Instructions: Each of the following items must be attached to the closure report. Please indicate, by a check mark in the box, that the documents are attached.*

- ☒ Proof of Closure Notice (surface owner and division)
 - ☐ Proof of Deed Notice (required for on-site closure for private land only)
 - ☐ Plot Plan (for on-site closures and temporary pits)
 - ☒ Confirmation Sampling Analytical Results (if applicable)
 - ☐ Waste Material Sampling Analytical Results (required for on-site closure)
 - ☐ Disposal Facility Name and Permit Number
 - ☒ Soil Backfilling and Cover Installation
 - ☒ Re-vegetation Application Rates and Seeding Technique
 - ☒ Site Reclamation (Photo Documentation)
- On-site Closure Location: Latitude _____ Longitude _____ NAD: ☐ 1927 ☐ 1983

Operator Closure Certification:

I hereby certify that the information and attachments submitted with this closure report is true, accurate and complete to the best of my knowledge and belief. I also certify that the closure complies with all applicable closure requirements and conditions specified in the approved closure plan.

Name (Print): Kenny DavisTitle: Staff Regulatory TechnicianSignature: Date: 12/3/14e-mail address: kenny.r.davis@conocophillips.comTelephone: 505-599-4045

Burlington Resources Oil Gas Company, LP
San Juan Basin
Below Grade Tank Closure Report
(Without Reclamation)

Lease Name: MADDOX D FEDERAL COM 100

API No.: 30-045-30600

In accordance with Rule 19.15.17.13 NMAC the following information describes the closure of the below-grade tank referenced above. All proper documentation regarding closure activities is being included with the C-144.

General Plan:

1. BR shall close a below-grade tank within 60 days of cessation of operations per Subsection G.4 of 19.15.17.13 NMAC. This will include a) below-grade tanks that do not meet the requirements of Paragraphs (1) through (4) of Subsection I of 19.15.17.11 NMAC or is not included in Paragraph (5) of Subsection I of 19.15.17.11 NMAC within five years, if not retrofitted to comply with Paragraphs (1) through (4) of Subsection I of 19.15.17.11 NMAC; b) an earlier date that the division requires because of imminent danger to fresh water, public health or the environment. For any closure, BR will file the C144 Closure Report as required.
2. **The below-grade tank referenced above was permitted and closed within 60 days of cessation of the below-grade tanks operation.**
3. BR shall remove liquids and sludge from a below-grade tank prior to implementing a closure method and shall dispose of the liquids and sludge in a division-approved facility. The facilities to be used will be Basin Disposal (Permit #NM-01-005), JFJ Landfarm % Industrial Ecosystem Inc. (Permit # NM-01-0010B) and Envirotech Land Farm (Permit #NM-01-011). The liner after being cleaned well (Subsection D, Paragraph 1, Subparagraph (m) of 19.15.9.712 NMAC) will be disposed of at the San Juan County Regional Landfill located on CR 3100.

All recovered liquids were disposed of at Basin Disposal (Permit #NM-01-005) and any sludge or soil required to be removed to facilitate closure was hauled to Envirotech Land Farm (Permit #NM-01-011) and JFJ Landfarm % IEI (Permit #NM-01-0010B). The liner was cleaned per Subsection D, Paragraph 1, Subparagraph (m) of 19.15.9.712 NMAC was disposed of at the San Juan County Regional Landfill located on CR 3100.

4. BR Will receive prior approval to remove the below-grade tank and dispose of it in a division-approved facility or recycle, reuse, or reclaim it in a manner that the appropriate division district office approves.

The below-grade tank was disposed of in a division-approved manner.

5. If there is any on-site equipment associated with a below-grade tank, then BR shall remove the equipment, unless the equipment is required for some other purpose.

All on-site equipment associated with the below-grade tank was removed.

6. BR will test the soils beneath the below-grade tank to determine whether a release has occurred. COPC shall collect, at a minimum, a five point, composite sample; collect individual grab samples from any area that is wet, discolored or showing other evidence of a release; and analyzed for the constituents listed in Table I of 19.15.17.13 NMAC. COPC shall notify the division of its results on form C-141.

7. A five point composite sample was taken of the below-grade tank using sampling tools and all samples tested per Subsection B of 19.15.17.1 3(B)(1)(b). (Sample results attached).

Components	Tests Method	Limit (mg/kg)
Benzene	EPA SW-846 8021B or 8260B	0.2
BTEX	EPA SW-846 8021B or 8260B	50
TPH	EPA SW-846 418.1	100
Chlorides	EPA 300.1	250

8. If BR or the division determines that a release has occurred, then BR shall comply with 19.15.3.116 NMAC and 19.15.1.19 NMAC, as appropriate.

A release was not determined for the above referenced well.

9. If the sampling program demonstrates that a release has not occurred or that any release does not exceed the concentrations specified in Table I of 19.15.17.13 NMAC, then BR shall backfill the excavation with compacted, non-waste containing, earthen material; construct a division-prescribed soil cover; recontour and re-vegetate the site.

The below-grade tank area passed all requirements of Paragraph (4) of Subsection E of 19.15.17.13 NMAC and was backfilled with compacted, non-waste containing, earthen material.

10. Notice of Closure will be given prior to closure to the Aztec Division office between 72 hours and one week via email or verbally. The notification of closure will include the following:
- Operator's name
 - Location by Unit Letter, Section, Township, and Range. Well name and API number.

Notification is missing due to employee turnovers. ConocoPhillips has reviewed our internal processes and has updated them to include the required 72 hour notification.

11. The surface owner shall be notified of BR's closing of the below-grade tank 72 hours, but not more than one week, prior to closure as per the approved closure plan via certified mail, return receipt requested.

The closure process notification to the landowner not found. COPC was not aware that the original notification sent at the time of Permitting was not the only closure notification required.

ConocoPhillips has reviewed our internal processes and has updated them to include the required 72 hour notification.

12. Re-contouring of location will match fit, shape, line, form and texture of the surrounding. Re-shaping will include drainage control, prevent ponding, and prevent erosion. Natural drainages will be unimpeded and water bars and/or silt traps will be place in areas where needed to prevent erosion on a large scale. Final re-contour shall have a uniform appearance with smooth surface, fitting the natural landscape.

The below-grade tank area will be re-contoured to match fit, shape, line, form and texture of the surrounding area. Re-shaping, including drainage control, to prevent ponding and erosion. Natural drainages were unimpeded and water bars and/or silt traps were placed in areas where needed to prevent erosion on a large scale. Final recontour has a uniform appearance with smooth surface, fitting the natural landscape.

13. BR Shall seed the disturbed areas the first favorable growing season following closure of a below-grade tank. Seeding will be accomplished via drilling on the contour whenever practical or by other division-approved

methods. BLM stipulated seed mixes will be used on federally regulated lands and division-approved seed mixtures (administratively approved if required) will be utilized on all State or private lands. A uniform vegetative cover has been established that reflects a life-form ratio of plus or minus fifty percent (50%) of pre-disturbance levels and a total percent plant cover of at least seventy percent (70%) of pre-disturbance levels, excluding noxious weeds. If an alternate seed mix is required by the state, private owner or tribe, it will be implemented with administrative approval if needed. COPC will repeat seeding or planting will be continued until successful vegetative growth occurs.

Provision 13 will be accomplished through complying with BLM seeding requirements as allowed by the BLM/OCD MOU.

14. A minimum of four feet of cover shall be achieved and the cover shall include one foot of suitable material, with chloride concentrations less than 600 mg/kg as analyzed by EPA Method 300.0, to establish vegetation at the site, or the background thickness of topsoil, whichever is greater.

The below-grade tank area was backfilled and more than four feet of cover was achieved and the cover included one foot of suitable material to establish vegetation at the site.

15. All closure activities will include proper documentation and be available for review upon request and will be submitted to OCD within 60 days of closure of the below-grade tank. Closure report will be filed on C-144 and incorporate the following:
 - Soil Backfilling and Cover Installation (See Report)
 - Re-vegetation application rates and seeding techniques (See Report)
 - Photo documentation of the site reclamation (Included as an attachment)
 - Confirmation Sampling Results (Included as an attachment)
 - Proof of closure notice (Included as an attachment)

Closure Documentation was not submitted within the 60 day requirement due to employee turnovers. ConocoPhillips has reviewed our internal processes and has updated them to ensure closure documentation is submitted with the 60 day time frame.



Animas Environmental Services, LLC

www.animasenvironmental.com

624 E. Comanche
Farmington, NM 87401
505-564-2281

Durango, Colorado
970-403-3084

April 29, 2013

Crystal Tafoya
ConocoPhillips
San Juan Business Unit
Office 214-05
5525 Hwy 64
Farmington, New Mexico 87401

**RE: Below Grade Tank Closure Report
Maddox D Federal Com #100
San Juan County, New Mexico**

Dear Ms. Tafoya:

Animas Environmental Services, LLC (AES) is pleased to provide the final report associated with the below grade tank (BGT) closure at ConocoPhillips (CoP) Maddox D Federal Com #100, located in San Juan County, New Mexico. Tank removal had been completed by CoP contractors prior to AES' arrival at the location.

1.0 Site Information

1.1 Location

Site Name – Maddox D Federal Com #100

Legal Description – NW¼ NE¼, Section 23, T30N, R13W, San Juan County, New Mexico

Well Latitude/Longitude – N36.80264 and W108.17110, respectively

BGT Latitude/Longitude – N36.80247 and W108.17130, respectively

Land Jurisdiction – Bureau of Land Management (BLM)

Figure 1. Topographic Site Location Map

Figure 2. Aerial Site Map, March 2013

1.2 NMOCD Ranking

Prior to site work, the New Mexico Oil Conservation Division (NMOCD) database was reviewed, and a cathodic report dated January 1994 for the Maddox D Federal Com #1, located approximately 550 feet south of the location, reported the depth to groundwater as 240 feet below ground surface (bgs). The New Mexico Office of the State Engineer (NMOSE) database was reviewed for nearby water wells, and no registered water wells were reported to be located within 1,000 feet of the location. Additionally, Google Earth and the New Mexico Tech Petroleum Recovery Research

Center online mapping tool (<http://ford.nmt.edu/react/project.html>) were accessed to aid in the identification of downgradient surface water.

Once on site, AES personnel further assessed the ranking using topographical interpretation, Global Positioning System (GPS) elevation readings, and visual reconnaissance. AES personnel concluded that depth to groundwater at the site was greater than 100 feet bgs. An unnamed wash is located approximately 125 feet south of the location and discharges to the Farmington Glade approximately 0.3 miles to the west. Based on this information, the location was assessed a ranking score of 20.

1.3 BGT Closure Assessment

AES was initially contacted by Jess Henson, CoP representative, on March 6, 2013, and on March 7, 2013, Deborah Watson and Heather Woods of AES mobilized to the location. AES personnel collected six soil samples from below the BGT liner. Four samples were collected from the perimeter of the BGT footprint, one sample was collected from the center of the BGT footprint, and one sample was composited from the four perimeter samples and one center sample.

2.0 Soil Sampling

On March 7, 2013, AES personnel conducted field screening and collected five soil samples (S-1 through S-5) and one 5-point composite (SC-1) from below the BGT. Soil samples were collected from approximately 0.5 feet below the former BGT for field screening of volatile organic compounds (VOCs) and total petroleum hydrocarbon (TPH). Soil sample SC-1 was field screened for VOCs and chloride and was submitted for confirmation laboratory analysis. Soil sample locations are included on Figure 2.

2.1 Field Screening

2.1.1 Volatile Organic Compounds

A portion of each sample was utilized for field screening of VOC vapors with a photo-ionization detector (PID) organic vapor meter (OVM). Before beginning field screening, the PID-OVM was first calibrated with 100 parts per million (ppm) isobutylene gas.

2.1.2 Total Petroleum Hydrocarbons

Soil samples were also analyzed in the field for TPH per USEPA Method 418.1 using a Buck Scientific Model HC-404 Total Hydrocarbon Analyzer Infrared Spectrometer (Buck). A 3-point calibration was completed prior to conducting soil analyses. Field analytical protocol followed AES's *Standard Operating Procedure: Field Analysis Total Petroleum Hydrocarbons per EPA Method 418.1*.

2.1.3 Chlorides

Soil sample SC-1 was field screened for chlorides using Chloride Drop Count Titration with silver nitrate. Sampling and analysis methods followed procedures provided by Hach Company.

2.2 Laboratory Analyses

The composite soil sample SC-1 collected for laboratory analysis was placed into a new, clean, laboratory-supplied container, which was then labeled, placed on ice, and logged onto a sample chain of custody record. The sample was maintained on ice until delivery to the analytical laboratory, Hall Environmental Analysis Laboratory (Hall), in Albuquerque, New Mexico. Soil sample SC-1 was laboratory analyzed for:

- Benzene, toluene, ethylbenzene, and xylene (BTEX) per U.S. Environmental Protection Agency (USEPA) Method 8260B; and
- Chloride per USEPA Method 300.0.

2.3 Field and Laboratory Analytical Results

Field screening readings for VOCs via OVM ranged from 3.2 ppm in S-1 up to 12.4 ppm in S-4. Field TPH concentrations were recorded at less than 20.0 mg/kg in each sample (S-1 through S-5). The field chloride concentration in SC-1 was 80 mg/kg. Field screening results are summarized in Table 1 and presented on Figure 2. The AES Field Screening Report is attached.

Table 1. Soil Field Screening VOCs, TPH, and Chloride Results
Maddox D Federal Com #100 BGT Closure, March 2013

<i>Sample ID</i>	<i>Date Sampled</i>	<i>Depth below BGT (ft)</i>	<i>VOCs OVM Reading (ppm)</i>	<i>Field TPH (mg/kg)</i>	<i>Field Chlorides (mg/kg)</i>
NMOCD Action Level (NMAC 19.15.17.13E)			--	100	250
S-1	03/07/13	0.5	3.2	<20.0	NA
S-2	03/07/13	0.5	5.0	<20.0	NA
S-3	03/07/13	0.5	7.4	<20.0	NA
S-4	03/07/13	0.5	12.4	<20.0	NA
S-5	03/07/13	0.5	8.4	<20.0	NA
SC-1	03/07/13	0.5	6.4	NA	80

NA - not analyzed

Laboratory analytical results reported benzene and total BTEX concentrations in SC-1 as less than 0.050 mg/kg and 0.25 mg/kg, respectively. The laboratory chloride concentration was reported below the laboratory detection limit of 30 mg/kg. Laboratory analytical results are summarized in Table 2 and included on Figure 2. Laboratory analytical reports are attached.

Table 2. Soil Laboratory Analytical Results
Maddox D Federal Com #100 BGT Closure, March 2013

Sample ID	Date Sampled	Depth (ft)	Benzene (mg/kg)	Total BTEX (mg/kg)	TPH-GRO (mg/kg)	TPH-DRO (mg/kg)	Chlorides (mg/kg)
NMOCD Action Level (NMAC 19.15.17.13E)			0.2	50	100		250
SC-1	03/07/13	0.5	<0.050	<0.25	NA	NA	<30

NA - not analyzed

3.0 Conclusions and Recommendations

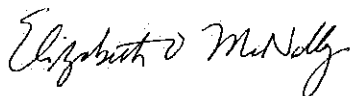
NMOCD action levels for BGT closures are specified in New Mexico Administrative Code (NMAC) 19.15.17.13E. Field TPH concentrations were below the NMOCD action level of 100 mg/kg, with concentrations reported as less than 20 mg/kg in each sample (S-1 through S-5). Laboratory analytical results for benzene and total BTEX concentrations in SC-1 were below the NMOCD action levels of 0.2 mg/kg and 50 mg/kg, respectively. Chloride concentrations in SC-1 were below the NMOCD action level of 250 mg/kg. Based on field screening and laboratory analytical results for benzene, total BTEX, TPH, and chlorides, no further work is recommended at the Maddox D Federal Com #100.

If you have any questions about this report or site conditions, please do not hesitate to contact Deborah Watson at (505) 564-2281.

Sincerely,



Landrea Cupps
Environmental Scientist



Elizabeth McNally, P.E.

Attachments:

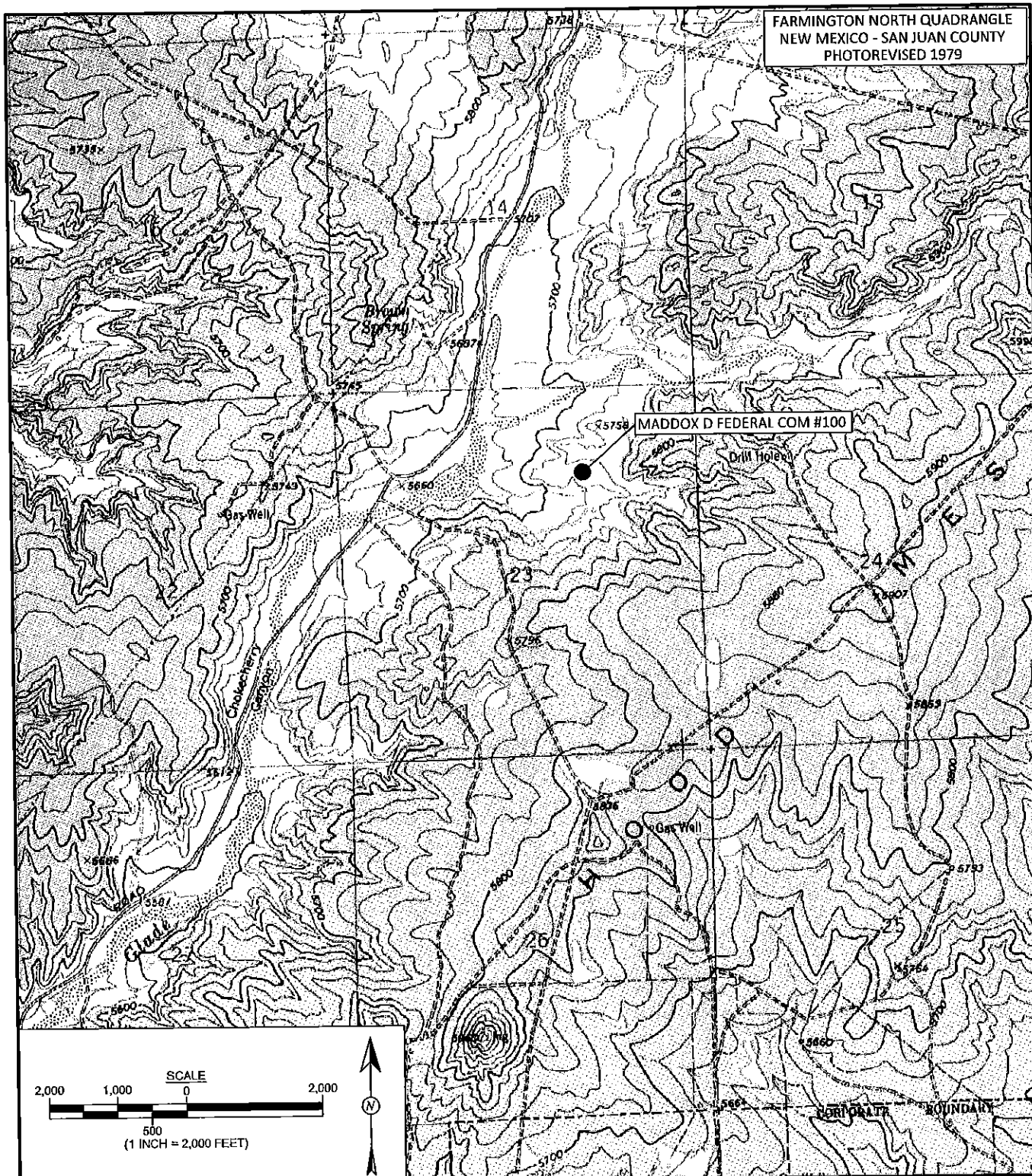
Figure 1. Topographic Site Location Map

Figure 2. Aerial Site Map, March 2013

AES Field Screening Report 030713

Hall Analytical Report 1303370

R:\Animas 2000\Dropbox\2013 Projects\ConocoPhillips\Maddox D Fed Com #100\Maddox D Fed Com
#100 BGT Closure Report 042913.docx



FARMINGTON NORTH QUADRANGLE
NEW MEXICO - SAN JUAN COUNTY
PHOTOREVISED 1979

MADDOX D FEDERAL COM #100

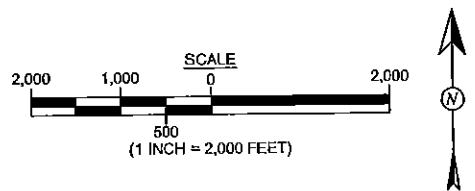
Drill Hole

Gas Well

Chokecherry Canyon

Globe

PROPERTY BOUNDARY



Animas Environmental Services, LLC

DRAWN BY: K. Christiansen	DATE DRAWN: April 9, 2013
REVISIONS BY: K. Christiansen	DATE REVISED: April 9, 2013
CHECKED BY: D. Watson	DATE CHECKED: April 13, 2013
APPROVED BY: E. McNally	DATE APPROVED: April 13, 2013

FIGURE 1

TOPOGRAPHIC SITE LOCATION MAP
ConocoPhillips
MADDOX D FEDERAL COM #100
NW¼ NE¼, SECTION 23, T30N, R13W
SAN JUAN COUNTY, NEW MEXICO
N36.80264, W108.17110

LEGEND

● SAMPLE LOCATIONS

Field Screening Results

Sample ID	Date	OVM-PID (ppm)	TPH (mg/kg)	Chlorides (mg/kg)
NMOCD ACTION LEVEL		--	100	250
S-1	3/7/13	3.2	<20.0	NA
S-2	3/7/13	5.0	<20.0	NA
S-3	3/7/13	7.4	<20.0	NA
S-4	3/7/13	12.4	<20.0	NA
S-5	3/7/13	8.4	<20.0	NA
SC-1	3/7/13	6.4	NA	80

SC-1 IS A 5-POINT COMPOSITE SAMPLE OF S-1 THROUGH S-5. NA - NOT ANALYZED

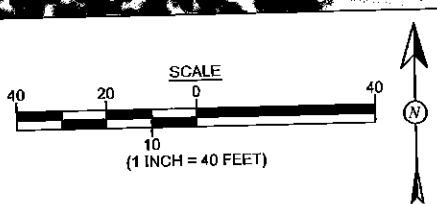
Laboratory Analytical Results

Sample ID	Date	Benzene (mg/kg)	Total BTEX (mg/kg)	TPH - GRO (mg/kg)	TPH - DRO (mg/kg)	Chlorides (mg/kg)
NMOCD ACTION LEVEL		0.2	50	100		250
SC-1	3/7/13	<0.050	<0.25	NA	NA	<30

SAMPLE WAS ANALYZED PER EPA METHOD 8260B AND 300.0. NA- NOT ANALYZED

MADDOX D FEDERAL COM # 100
WELL MONUMENT

BGT - N36.80247
W108.17130



AERIAL SOURCE: © 2012 MICROSOFT CORPORATION - AVAILABLE EXCLUSIVELY BY DIGITALGLOBE

AES



Animas Environmental Services, LLC

DRAWN BY:

K. Christiansen

DATE DRAWN:

April 9, 2013

REVISIONS BY:

K. Christiansen

DATE REVISED:

April 9, 2013

CHECKED BY:

D. Watson

DATE CHECKED:

April 13, 2013

APPROVED BY:

E. McNally

DATE APPROVED:

April 13, 2013

FIGURE 2

AERIAL SITE MAP BELOW GRADE TANK CLOSURE MARCH 2013

ConocoPhillips
MADDOX D FEDERAL COM #100
NW¼ NE¼, SECTION 23, T30N, R13W
SAN JUAN COUNTY, NEW MEXICO
N36.80264, W108.17110

AES Field Screening Report



Animas Environmental Services, LLC
www.animasenvironmental.com

Client: ConocoPhillips

624 E. Comanche
Farmington, NM 87401
505-564-2281

Project Location: Maddox D Federal Com #100

Date: 3/7/2013

Durango, Colorado
970-403-3084

Matrix: Soil

Sample ID	Collection Date	Time of Sample Collection	Sample Location	OVUM (ppm)	Field Chloride (mg/kg)	Field TPH Analysis Time	Field TPH* (mg/kg)	TPH PQL (mg/kg)	DF	TPH Analysts Initials
S-1	3/7/2013	11:20	North	3.2	NA	11:51	<20.0	20.0	1	HMW
S-2	3/7/2013	11:22	South	5.0	NA	11:54	<20.0	20.0	1	HMW
S-3	3/7/2013	11:24	East	7.4	NA	11:57	<20.0	20.0	1	HMW
S-4	3/7/2013	11:26	West	12.4	NA	11:58	<20.0	20.0	1	HMW
S-5	3/7/2013	11:28	Center	8.4	NA	11:59	<20.0	20.0	1	HMW
SC-1	3/7/2013	11:30	Composite	6.4	80	NA	Not analyzed for TPH.			

PQL Practical Quantitation Limit
ND Not Detected at the Reporting Limit
NA Not Analyzed
DF Dilution Factor

Total Petroleum Hydrocarbons - USEPA 418.1

Analyst:

Heather M. Woods

*Field TPH concentrations recorded may be below PQL.



*Hall Environmental Analysis Laboratory
4901 Hawkins NE
Albuquerque, NM 87109
TEL: 505-345-3975 FAX: 505-345-4107
Website: www.hallenvironmental.com*

March 14, 2013

Debbie Watson
Animas Environmental Services
624 East Comanche
Farmington, NM 87401
TEL: (505) 486-4071
FAX

RE: COP Maddox D Fed Com #100

OrderNo.: 1303370

Dear Debbie Watson:

Hall Environmental Analysis Laboratory received 1 sample(s) on 3/8/2013 for the analyses presented in the following report.

These were analyzed according to EPA procedures or equivalent. To access our accredited tests please go to www.hallenvironmental.com or the state specific web sites. See the sample checklist and/or the Chain of Custody for information regarding the sample receipt temperature and preservation. Data qualifiers or a narrative will be provided if the sample analysis or analytical quality control parameters require a flag. All samples are reported as received unless otherwise indicated. Lab measurement of analytes considered field parameters that require analysis within 15 minutes of sampling such as pH and residual chlorine are qualified as being analyzed outside of the recommended holding time.

Please don't hesitate to contact HEAL for any additional information or clarifications.

Sincerely,

Andy Freeman
Laboratory Manager
4901 Hawkins NE
Albuquerque, NM 87109

Analytical Report

Lab Order 1303370

Date Reported: 3/14/2013

Hall Environmental Analysis Laboratory, Inc.

CLIENT: Animas Environmental Services

Client Sample ID: SC-1

Project: COP Maddox D Fed Com #100

Collection Date: 3/7/2013 11:30:00 AM

Lab ID: 1303370-001

Matrix: SOIL

Received Date: 3/8/2013 10:00:00 AM

Analyses	Result	RL	Qual	Units	DF	Date Analyzed
EPA METHOD 300.0: ANIONS						Analyst: JRR
Chloride	ND	30		mg/Kg	20	3/8/2013 12:02:54 PM
EPA METHOD 8260B: VOLATILES SHORT LIST						Analyst: RAA
Benzene	ND	0.050		mg/Kg	1	3/8/2013 11:55:17 AM
Toluene	ND	0.050		mg/Kg	1	3/8/2013 11:55:17 AM
Ethylbenzene	ND	0.050		mg/Kg	1	3/8/2013 11:55:17 AM
Xylenes, Total	ND	0.10		mg/Kg	1	3/8/2013 11:55:17 AM
Surr: 1,2-Dichloroethane-d4	88.1	70-130		%REC	1	3/8/2013 11:55:17 AM
Surr: 4-Bromofluorobenzene	92.4	70-130		%REC	1	3/8/2013 11:55:17 AM
Surr: Dibromofluoromethane	91.7	70-130		%REC	1	3/8/2013 11:55:17 AM
Surr: Toluene-d8	97.6	70-130		%REC	1	3/8/2013 11:55:17 AM

Qualifiers: * Value exceeds Maximum Contaminant Level.
 E Value above quantitation range
 J Analyte detected below quantitation limits
 P Sample pH greater than 2
 RL Reporting Detection Limit

B Analyte detected in the associated Method Blank
 H Holding times for preparation or analysis exceeded
 ND Not Detected at the Reporting Limit
 R RPD outside accepted recovery limits
 S Spike Recovery outside accepted recovery limits

QC SUMMARY REPORT

Hall Environmental Analysis Laboratory, Inc.

WO#: 1303370

14-Mar-13

Client: Animas Environmental Services
Project: COP Maddox D Fed Com #100

Sample ID	MB-6389	SampType:	MBLK	TestCode:	EPA Method 300.0: Anions					
Client ID:	PBS	Batch ID:	6389	RunNo:	9087					
Prep Date:	3/8/2013	Analysis Date:	3/8/2013	SeqNo:	258707	Units:	mg/Kg			
Analyte	Result	PQL	SPK value	SPK Ref Val	%REC	LowLimit	HighLimit	%RPD	RPDLimit	Qual
Chloride	ND	1.5								

Sample ID	LCS-6389	SampType:	LCS	TestCode:	EPA Method 300.0: Anions					
Client ID:	LCSS	Batch ID:	6389	RunNo:	9087					
Prep Date:	3/8/2013	Analysis Date:	3/8/2013	SeqNo:	258708	Units:	mg/Kg			
Analyte	Result	PQL	SPK value	SPK Ref Val	%REC	LowLimit	HighLimit	%RPD	RPDLimit	Qual
Chloride	15	1.5	15.00	0	97.5	90	110			

Sample ID	1303229-001AMS	SampType:	MS	TestCode:	EPA Method 300.0: Anions					
Client ID:	BatchQC	Batch ID:	6389	RunNo:	9087					
Prep Date:	3/8/2013	Analysis Date:	3/8/2013	SeqNo:	258710	Units:	mg/Kg			
Analyte	Result	PQL	SPK value	SPK Ref Val	%REC	LowLimit	HighLimit	%RPD	RPDLimit	Qual
Chloride	15	7.5	15.00	2.286	83.7	64.4	117			

Sample ID	1303229-001AMSD	SampType:	MSD	TestCode:	EPA Method 300.0: Anions					
Client ID:	BatchQC	Batch ID:	6389	RunNo:	9087					
Prep Date:	3/8/2013	Analysis Date:	3/8/2013	SeqNo:	258711	Units:	mg/Kg			
Analyte	Result	PQL	SPK value	SPK Ref Val	%REC	LowLimit	HighLimit	%RPD	RPDLimit	Qual
Chloride	15	7.5	15.00	2.286	83.9	64.4	117	0.162	20	

Qualifiers:

* Value exceeds Maximum Contaminant Level.
 E Value above quantitation range
 J Analyte detected below quantitation limits
 P Sample pH greater than 2
 RL Reporting Detection Limit

B Analyte detected in the associated Method Blank
 H Holding times for preparation or analysis exceeded
 ND Not Detected at the Reporting Limit
 R RPD outside accepted recovery limits
 S Spike Recovery outside accepted recovery limits

QC SUMMARY REPORT

Hall Environmental Analysis Laboratory, Inc.

WO#: 1303370

14-Mar-13

Client: Animas Environmental Services
Project: COP Maddox D Fed Com #100

Sample ID	5ml rb	SampType:	MBLK	TestCode:	EPA Method 8260B: Volatiles Short List					
Client ID:	PBS	Batch ID:	R9062	RunNo:	9062					
Prep Date:		Analysis Date:	3/8/2013	SeqNo:	258899	Units:	mg/Kg			
Analyte	Result	PQL	SPK value	SPK Ref Val	%REC	LowLimit	HighLimit	%RPD	RPDLimit	Qual
Benzene	ND	0.050								
Toluene	ND	0.050								
Ethylbenzene	ND	0.050								
Xylenes, Total	ND	0.10								
Surr: 1,2-Dichloroethane-d4	0.44		0.5000		88.1	70	130			
Surr: 4-Bromofluorobenzene	0.51		0.5000		102	70	130			
Surr: Dibromofluoromethane	0.46		0.5000		92.3	70	130			
Surr: Toluene-d8	0.47		0.5000		93.2	70	130			

Sample ID	100ng lcs	SampType:	LCS	TestCode:	EPA Method 8260B: Volatiles Short List					
Client ID:	LCSS	Batch ID:	R9062	RunNo:	9062					
Prep Date:		Analysis Date:	3/8/2013	SeqNo:	258900	Units:	mg/Kg			
Analyte	Result	PQL	SPK value	SPK Ref Val	%REC	LowLimit	HighLimit	%RPD	RPDLimit	Qual
Benzene	1.1	0.050	1.000	0	108	70	130			
Toluene	1.0	0.050	1.000	0	104	80	120			
Surr: 1,2-Dichloroethane-d4	0.45		0.5000		89.5	70	130			
Surr: 4-Bromofluorobenzene	0.49		0.5000		97.3	70	130			
Surr: Dibromofluoromethane	0.48		0.5000		95.9	70	130			
Surr: Toluene-d8	0.46		0.5000		91.2	70	130			

Sample ID	1303370-001a ms	SampType:	MS	TestCode:	EPA Method 8260B: Volatiles Short List					
Client ID:	SC-1	Batch ID:	R9062	RunNo:	9062					
Prep Date:		Analysis Date:	3/9/2013	SeqNo:	258910	Units:	mg/Kg			
Analyte	Result	PQL	SPK value	SPK Ref Val	%REC	LowLimit	HighLimit	%RPD	RPDLimit	Qual
Benzene	0.69	0.050	0.6741	0.003526	101	67.5	124			
Toluene	0.71	0.050	0.6741	0	106	55.8	142			
Surr: 1,2-Dichloroethane-d4	0.30		0.3370		89.0	70	130			
Surr: 4-Bromofluorobenzene	0.32		0.3370		93.7	70	130			
Surr: Dibromofluoromethane	0.31		0.3370		93.2	70	130			
Surr: Toluene-d8	0.33		0.3370		96.9	70	130			

Sample ID	1303370-001a msd	SampType:	MSD	TestCode:	EPA Method 8260B: Volatiles Short List					
Client ID:	SC-1	Batch ID:	R9062	RunNo:	9062					
Prep Date:		Analysis Date:	3/9/2013	SeqNo:	258911	Units:	mg/Kg			
Analyte	Result	PQL	SPK value	SPK Ref Val	%REC	LowLimit	HighLimit	%RPD	RPDLimit	Qual
Benzene	0.72	0.050	0.6741	0.003526	107	67.5	124	5.09	20	
Toluene	0.71	0.050	0.6741	0	105	55.8	142	0.0834	20	
Surr: 1,2-Dichloroethane-d4	0.31		0.3370		92.7	70	130	0	0	

Qualifiers:

- * Value exceeds Maximum Contaminant Level.
- E Value above quantitation range
- J Analyte detected below quantitation limits
- P Sample pH greater than 2
- RL Reporting Detection Limit

- B Analyte detected in the associated Method Blank
- H Holding times for preparation or analysis exceeded
- ND Not Detected at the Reporting Limit
- R RPD outside accepted recovery limits
- S Spike Recovery outside accepted recovery limits

QC SUMMARY REPORT

Hall Environmental Analysis Laboratory, Inc.

WO#: 1303370

14-Mar-13

Client: Animas Environmental Services

Project: COP Maddox D Fed Com #100

Sample ID	1303370-001a msd	SampType:	MSD	TestCode:	EPA Method 8260B: Volatiles Short List					
Client ID:	SC-1	Batch ID:	R9062	RunNo:	9062					
Prep Date:		Analysis Date:	3/9/2013	SeqNo:	258911	Units:	mg/Kg			
Analyte	Result	PQL	SPK value	SPK Ref Val	%REC	LowLimit	HighLimit	%RPD	RPDLimit	Qual
Surr: 4-Bromofluorobenzene	0.31		0.3370		91.9	70	130	0	0	
Surr: Dibromofluoromethane	0.33		0.3370		98.4	70	130	0	0	
Surr: Toluene-d8	0.34		0.3370		99.5	70	130	0	0	

Qualifiers:

* Value exceeds Maximum Contaminant Level.
E Value above quantitation range
J Analyte detected below quantitation limits
P Sample pH greater than 2
RL Reporting Detection Limit

B Analyte detected in the associated Method Blank
H Holding times for preparation or analysis exceeded
ND Not Detected at the Reporting Limit
R RPD outside accepted recovery limits
S Spike Recovery outside accepted recovery limits



Hall Environmental Analysis Laboratory
4901 Hawkins NE
Albuquerque, NM 87105
TEL: 505-345-3975 FAX: 505-345-4107
Website: www.hallenvironmental.com

Sample Log-In Check List

Client Name: Animas Environmental Work Order Number: 1303370
Received by/date: MC 03/08/13
Logged By: Anne Thorne 3/8/2013 10:00:00 AM Am Th
Completed By: Anne Thorne 3/8/2013 Am Th
Reviewed By: [Signature] 03/08/13

Chain of Custody

1. Were seals intact? Yes ☐ No ☐ Not Present ☒
2. Is Chain of Custody complete? Yes ☒ No ☐ Not Present ☐
3. How was the sample delivered? Courier

Log In

4. Coolers are present? (see 19. for cooler specific information) Yes ☒ No ☐ NA ☐
5. Was an attempt made to cool the samples? Yes ☒ No ☐ NA ☐
6. Were all samples received at a temperature of $>0^{\circ}\text{C}$ to 6.0°C ? Yes ☒ No ☐ NA ☐
7. Sample(s) in proper container(s)? Yes ☒ No ☐
8. Sufficient sample volume for indicated test(s)? Yes ☒ No ☐
9. Are samples (except VOA and ONG) properly preserved? Yes ☒ No ☐
10. Was preservative added to bottles? Yes ☐ No ☒ NA ☐
11. VOA vials have zero headspace? Yes ☐ No ☐ No VOA Vials ☒
12. Were any sample containers received broken? Yes ☐ No ☒
13. Does paperwork match bottle labels?
(Note discrepancies on chain of custody) Yes ☒ No ☐
14. Are matrices correctly identified on Chain of Custody? Yes ☒ No ☐
15. Is it clear what analyses were requested? Yes ☒ No ☐
16. Were all holding times able to be met?
(If no, notify customer for authorization.) Yes ☒ No ☐

of preserved
bottles checked
for pH:

(<2 or >12 unless noted)

Adjusted? _____

Checked by: _____

Special Handling (if applicable)

17. Was client notified of all discrepancies with this order? Yes ☐ No ☐ NA ☒

Person Notified: _____

Date: _____

By Whom: _____

Via: ☐ eMail ☐ Phone ☐ Fax ☐ In Person

Regarding: _____

Client Instructions: _____

18. Additional remarks:

19. Cooler Information

Cooler No	Temp $^{\circ}\text{C}$	Condition	Seal Intact	Seal No	Seal Date	Signed By
1	1.0	Good	Yes			

District I
1625 N. French Dr., Hobbs, NM 88240
District II
1301 W. Grand Avenue, Artesia, NM 88210
District III
1000 Rio Brazos Road, Aztec, NM 87410
District IV
1220 S. St. Francis Dr., Santa Fe, NM 87505

State of New Mexico
Energy Minerals and Natural Resources
Oil Conservation Division
1220 South St. Francis Dr.
Santa Fe, NM 87505

Form C-141
Revised October 10, 2003
Submit 2 Copies to appropriate
District Office in accordance
with Rule 116 on back
side of form

Release Notification and Corrective Action

OPERATOR

☐ Initial Report ☒ Final Report

Name of Company Burlington Resources ✓	Contact Kenny Davis
Address 3401 East 30th St, Farmington, NM	Telephone No. (505) 599-4045
Facility Name: Maddox D Federal Com 100	Facility Type: Gas Well
Surface Owner Federal ✓	Mineral Owner Federal ✓
Lease No. NM-0546 ✓	

LOCATION OF RELEASE

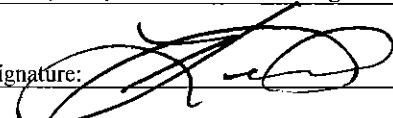
Unit Letter B ✓	Section 23 ✓	Township 30N ✓	Range 13W ✓	Feet from the 1260 ✓	North/South Line North ✓	Feet from the 1525 ✓	East/West Line East ✓	County San Juan ✓
---------------------------	------------------------	--------------------------	-----------------------	--------------------------------	------------------------------------	--------------------------------	---------------------------------	-----------------------------

Latitude **36.80260000** Longitude **-108.17059000**

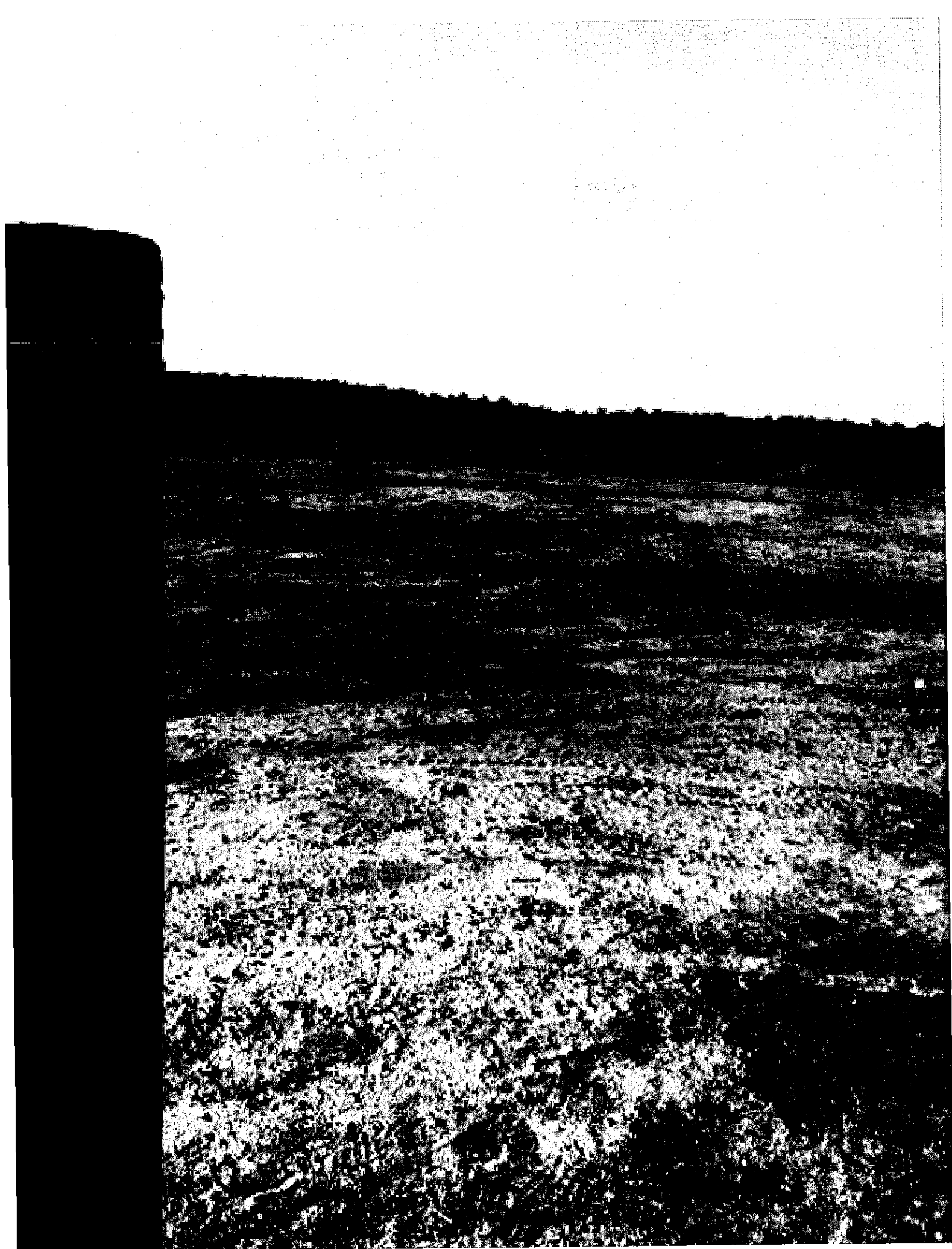
NATURE OF RELEASE

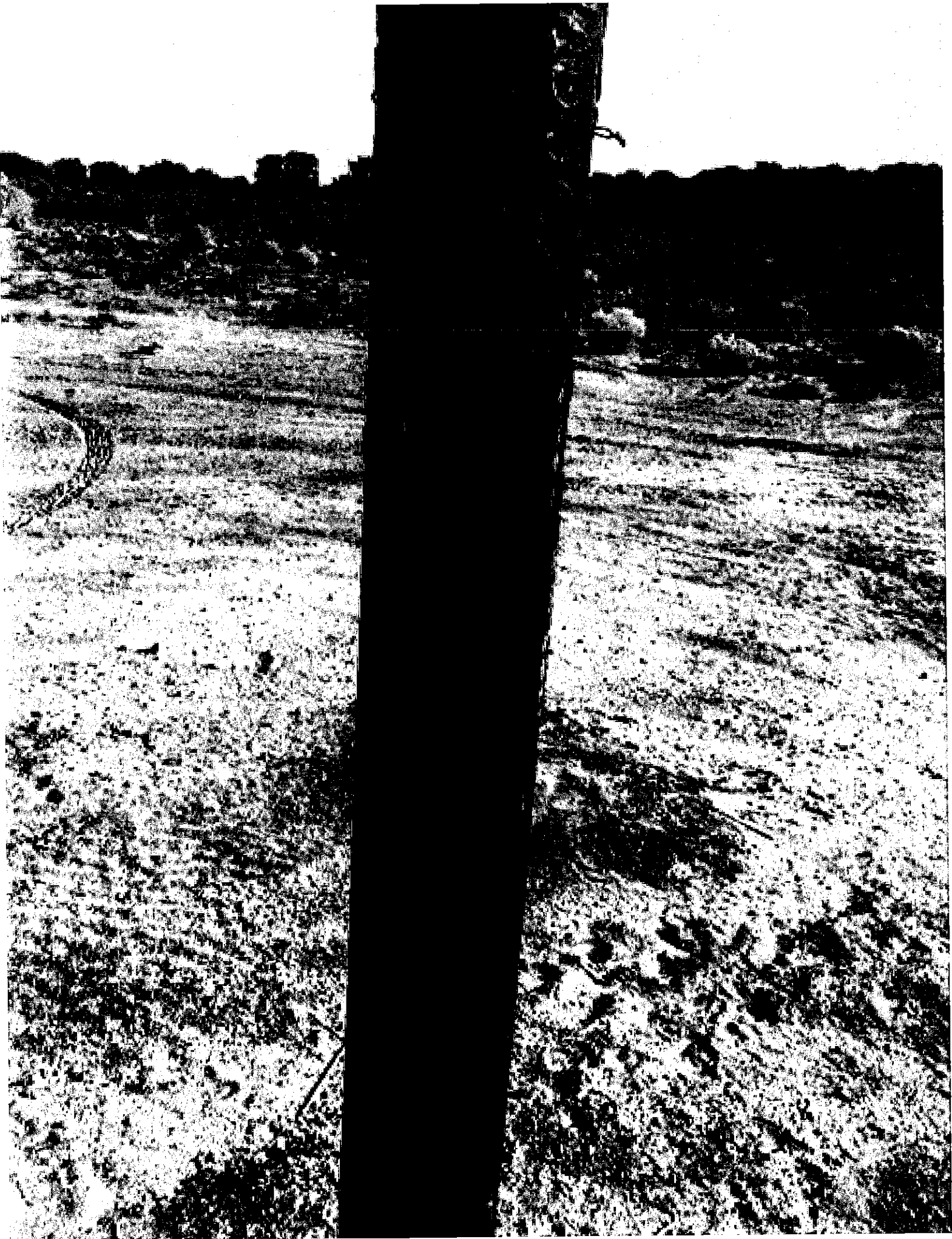
Type of Release BGT Closure Summary	Volume of Release N/A	Volume Recovered N/A
Source of Release: NONE	Date and Hour of Occurrence N/A	Date and Hour of Discovery N/A
Was Immediate Notice Given? <input type="checkbox"/> Yes <input type="checkbox"/> No <input checked="" type="checkbox"/> Not Required	If YES, To Whom? N/A	
By Whom? N/A	Date and Hour N/A	
Was a Watercourse Reached? N/A <input type="checkbox"/> Yes <input checked="" type="checkbox"/> No	If YES, Volume Impacting the Watercourse. N/A	
If a Watercourse was Impacted, Describe Fully.* N/A		
Describe Cause of Problem and Remedial Action Taken.* N/A		
Describe Area Affected and Cleanup Action Taken.* BGT Closure: NO RELEASE FOUND UPON REMOVAL		

I hereby certify that the information given above is true and complete to the best of my knowledge and understand that pursuant to NMOCD rules and regulations all operators are required to report and/or file certain release notifications and perform corrective actions for releases which may endanger public health or the environment. The acceptance of a C-141 report by the NMOCD marked as "Final Report" does not relieve the operator of liability should their operations have failed to adequately investigate and remediate contamination that pose a threat to ground water, surface water, human health or the environment. In addition, NMOCD acceptance of a C-141 report does not relieve the operator of responsibility for compliance with any other federal, state, or local laws and/or regulations.

Signature: 		OIL CONSERVATION DIVISION	
Printed Name: Kenny Davis		Approved by District Supervisor:	
Title: Staff Regulatory Technician		Approval Date:	Expiration Date:
E-mail Address: Kenny.r.davis@conocophillips.com		Conditions of Approval:	
Date: 12/9/14 Phone: (505) 599-4045		Attached <input type="checkbox"/>	

* Attach Additional Sheets If Necessary





BGT Closure Packet Check List - Well Name: Madrox D Federal Com 100
(S:\gsREG\Regulatory Pits (ADM090-12yrs)\New Requirements\Checklists\BGT Closure Check List)

12/9/14 (12) ✓ Below-grade Tank Closure Report from HSE
(S:\gsHSE\Element 6-Programs & Procedures\Underground Storage Tanks, Vessels, & Pits\Tank and Line
Test Results HSE800 E+20Y\Below Grade Tanks\ZZ-BGT Closure Reports (there are two folders-Below
Grade Tanks & ZZ-BGT Closure Reports - check in both places for documents)

3/4/15 DA }
12/9/14 (12) ✓ Sampling (S:\gsHSE\Element 6-Programs & Procedures\Underground Storage Tanks, Vessels, &
Pits\Tank and Line Test Results HSE800 E+20Y\Below Grade Tanks\ZZ-BGT Closure Reports (there are
two folders-Below Grade Tanks & ZZ-BGT Closure Reports - check in both places for documents)

NO RECORD

FOUND

Proof of Closure (72 Hour Notice) e-mail to NMOCD E-mail notice located @
S:\gsREG\WELLS LIST\WELL NAME\72 Hour Notice BGT Closure (for post 2008 BGT's.) or
research through Jamie's Folder in LRM (subfolders designated) - some have been moved to Wells
List or Regulatory Pits\New Requirements\BGT_Closure Report_e-mails\some don't exist at all.

NO RECORD

FOUND

Surface Owner Notification -(S:\gsREG\Wells List\Well Name) Saved copy
of e-mail you sent

NO Yel 12/9/14 (12) Pictures (Pit Closure Form located @ S:\gsProj\tssjd-copy\Construction\Open Pit Inspections
(EEF170). Print the reclamation form for reference of Closure Date for C144 (use Start of
Reclamation as the Closure Date)-If Reclamation has not taken place, we only need a picture of when
they backfilled after removing the BGT.

12/9/14 (12) ✓ C144 with correct operator, well name, lat/long., surface owner
(S:\gsREG\Regulatory Pits (ADM090-12yrs)\New Requirements\C-144 Forms\Pre 2013 C144 Forms\BGT
Closure (OLD)-Closure date for BGT's that have not had reclamation work done would be the date the
samples were taken when BGT was removed.

3/4/15 DA }
12/9/14 (12) ✓ Below-grade Tank Closure Report Summary w/ C-141
(S:\gsREG\Regulatory Pits (ADM090-12yrs)\New Requirements\BGT Closure Summary Report
Templates\Normal or Without Reclamation
C-141 found @ S:\gsHSE\Element 6-Programs & Procedures\Underground Storage Tanks, Vessels, &
Pits\Tank and Line Test Results HSE800 E+20Y\Below Grade Tanks

Order for submitting the packet

1. C144 Form
2. BGT Closure Report Summary
3. Proof of Closure (72 Hour Notice) e-mail to NMOCD
4. BGT Closure Report from HSE & C141 Form
5. Sampling Results
6. Pictures

The items on this checklist need to be checked off and initialed by the person completing the
work and must accompany the C-144 Closure Packet when it is handed off for QC and the QC
person must initial it as well. This checklist is to be scanned into Wells List & DSM as part of
the BGT Closure Packet.

Updated 11/20/14

Pre-BGT Closure Check List - Well Name: Maadoc Federal Com 10c
(S:\gsRED\Regulatory Pits (ADiv090-12yrs)\New Requirements\Checklists\Pre-BGT Closure Check List)

NO RECORD

- HISTORICAL

E-Mail received from O&M for P&A Facility Strip Notice
(Save this e-mail in the Wells List - S:\gsREG\1 Wells List under well name)

12/9/14 @

Verify Twinned Location (Check in DSM under General Tab for notes about twinned well or check 1st Delivery Database under Facilities located on MPAD)

3/4/15
N/A

Call or e-mail Area MSO (Ask them to verify if there is a BGT on location and have them send you a picture to verify. Save the picture - S:\gsREG\1 Wells List under well name)

12/9/14 @

Request Closure Plan Approval from Santa Fe -- (if this is a historic BGT Closure and the well is on the BGT Master List an e-mail is sent to Leonard Lowe @ Leonrd.Lowe@state.nm.us)

NO RECORD
FOUND

Send 72-hour closure notification to NMOCD (In the e-mail received from O&M there is an 'estimated start date', use this start date when sending your 72-hour but not more than one week notice to NMOCD)

NO RECORD
FOUND

Send 72-hour Surface Owner Notification (if surface owner is BLM/Tribal then we send an e-mail notification to Mark Kelly and Shari Ketchum giving notification that a BGT will be closed) (Note: previously we were submitting the 'original' surface owner notification that was submitted with the Permit; however, that part of the process was incorrect according to Cory @ NMOCD and going forward we will need to send this notification) For the Historic Closures, we will be stating that the notification cannot be found in our Closure Summary Report.

The items on this checklist need to be checked off and initialed by the person completing the work and must accompany the C-144 Closure Packet when it is handed off for QC and the QC person must initial it as well. This checklist is to be scanned into Wells List & DSM as part of the BGT Closure Packet.