

**UNITED STATES  
DEPARTMENT OF THE INTERIOR  
BUREAU OF LAND MANAGEMENT**

8 Sundry Notices and Reports on Wells

1. Type of Well  
GAS

2. Name of Operator  
**BURLINGTON**  
RESOURCES OIL & GAS COMPANY LP

3. Address & Phone No. of Operator

PO Box 4289, Farmington, NM 87499 (505) 326-9700

st 4. Location of Well, Footage, Sec., T, R, M  
Sec., T--N, R--W, NMPM

Unit M (SWSW), 1096' FSL & 860' FWL, Sec. 4, T27N, R4W NMPM

5. Lease Number  
SF-080668

6. If Indian, All. or  
Tribe Name

7. Unit Agreement Name  
San Juan 27-4 Unit

8. Well Name & Number

#18

9. API Well No.

30-039-07171

10. Field and Pool

Blanco Mesa Verde

11. County and State  
Rio Arriba Co., NM

**12. CHECK APPROPRIATE BOX TO INDICATE NATURE OF NOTICE, REPORT, OTHER DATA**

Type of Submission

☒ Notice of Intent

☐ Subsequent Report

☐ Final Abandonment

Type of Action

☒ Abandonment

☐ Recompletion

☐ Plugging

☐ Casing Repair

☐ Altering Casing

☐ Change of Plans

☐ New Construction

☐ Non-Routine Fracturing

☐ Water Shut off

☐ Conversion to Injection

☐ Other -

**13. Describe Proposed or Completed Operations**

It is intended to Plug & Abandon the subject well according to the attached procedure and well bore diagrams.

**14. I hereby certify that the foregoing is true and correct.**

Signed Philana Thompson Philana Thompson Title Regulatory Associate Date 3/14/05

(This space for Federal or State Office use)

APPROVED BY Original Signed: Stephen Mason Title \_\_\_\_\_

CONDITION OF APPROVAL, if any:

Title 18 U.S.C. Section 1001, makes it a crime for any person knowingly and willfully to make any department or agency of the United States any false, fictitious or fraudulent statements or representations as to any matter within its jurisdiction.

Date MAR 16 2005

2005 MAR 16 PM 2 53  
RECEIVED  
BUREAU OF LAND MANAGEMENT  
FARMINGTON, NM

NMCCD



**San Juan 27-4 Unit #18**  
**Plug and Abandonment Procedure**

1096 S, 860' W

M-04-27N-04W

Rio Arriba County, NM

LAT: 36 deg 35.88' LONG: 107 deg 15.684'

GL = 7,167' KB = 7,175'

AIN: 5207701

Note: All cement volumes use 100% excess outside casing and 50 foot excess inside casing. The stabilizing wellbore fluid will be 8.3 ppg, sufficient to balance all exposed formation pressures. Correlate at wireline depths to **All cement will be ASTM Type III neat cement.**

1. Install and/or test rig anchors. Prepare and line blow pit. Comply with all BLM, NMOCD and Burlington safety rules and regulations. MO and RU daylight pulling unit. ND wellhead and NU BOP, test BOP.
2. TOH and tally 2-3/8" EUE tubing, total 6263'. Visually inspect tubing and if necessary use a workstring. Round-trip 5 1/2" gauge ring or casing scraper to 5850' and 7 5/8" gauge ring or scraper to liner top at 4173'.
3. **Plug #1 (Mesaverde perforations and top, 5779' - 5570')**: TIH and set a 5 1/2" cement retainer at 5779'. Load the casing with water and circulate well clean. Pressure test 7" casing to 500#. If casing does not test, then spot or tag subsequent plugs as appropriate. Mix and pump 22 sxs Type III cement inside casing above CR to isolate the Mesaverde interval. PUH to 4350'.  
→ Chacara 4693' - 4593'
4. **Plug #2 (Intermediate shoe and Pictured Cliffs top, 4350' - 4000')**: Mix 63 sxs Type III cement and spot a balanced plug inside casing to cover the intermediate shoe and Pictured Cliffs top. TOH with tubing.  
3808 3708
5. **Plug #3 (Fruitland top, 3855' - 3755')**: Perforate 3 squeeze holes at 3855'. Attempt to establish rate into squeeze holes if the casing pressure tested. Set 7 5/8" cement retainer at 3855'. Establish rate into squeeze holes. Mix and pump 62 sxs Type III cement, squeeze 32 sxs outside the casing and leave 30 sxs top of retainer. PUH to 3730' and reverse clean. TOH with tubing.
6. **Plug #4 (Kirtland and Ojo Alamo tops, 3722' - 3520')**: Perforate 3 squeeze holes at 3722'. Attempt to establish rate into squeeze holes if the casing pressure tested. Set 7 5/8" cement retainer at 3672'. Establish rate into squeeze holes. Mix and pump 113 sxs Type III cement, squeeze 64 sxs outside the casing and leave 49 sxs on top of retainer. PU to 3500' and reverse clean. TOH with tubing.  
00 8420 80  
2198 2098 2198
7. **Plug #5 (Nacimiento top, 2550' - 2450')**: Perforate 3 squeeze holes at 2550'. Attempt to establish rate into squeeze holes if the casing pressure tested. Set 7 5/8" cement retainer at 2400'. Establish rate into squeeze holes. Mix and pump 62 sxs Type III cement, squeeze 32 sxs outside the casing and leave 30 sxs on top of retainer. TOH and LD tubing.
8. **Plug #6 (9-5/8" Surface casing, 252' - Surface)**: Perforate 3 squeeze holes at 226'. Establish circulation out the bradenhead valve with water. Mix and pump approximately 110 sxs Type III cement down the 7 5/8" casing to circulate good cement out bradenhead valve. Shut well in and WOC.
9. ND BOP and cut off wellhead below surface casing flange. Install P&A marker with cement to comply with regulations. RD, MOL and cut off anchors. Restore location per BLM stipulations.



Recommended:

Julian Carrillo  
Operations Engineer

Approved:

J. L. Sherfitt  
Sr. Rig Supervisor

Sundry Required:

YES

Approved:

Nancy Oltmanns  
Regulatory

Operations Engineer: Julian Carrillo  
Foreman: Darren Randall  
Lease Operator: Mike McKinney  
Specialist: Richard Lopez

Office: 599-4043	Cell: 320-0321
Office: 326-9808	Cell: 320-2618
Cell: 320-2533	Pager: 326-8365
Cell: 320-9539	Pager: 326-8681



# San Juan 27-4 Unit #18

1096 S, 860' W

M-04-27N-04W

Rio Arriba County, NM

LAT: 36 deg 35.88'

LONG: 107 deg 15.684'

GL = 7,167'

KB = 7,175'

## Proposed Wellbore

### Surface Casing:

10 3/4" 32.75#

H-40

Cement: 150 sx

TOC @ Surface by circ

Set @ 176'

Casing leak squeezed  
with 325 sxs from 3000-  
3347'

Ojo Alamo 3,570'

Kirtland 3,672'

### Intermediate Casing:

7 5/8" 26.4#

J-55

Cement: 200 sx

TOC @ 3860' by T.S.

Set @ 4,300'

Casing leak squeezed  
with 236 cuft at 3591'

### Production Liner:

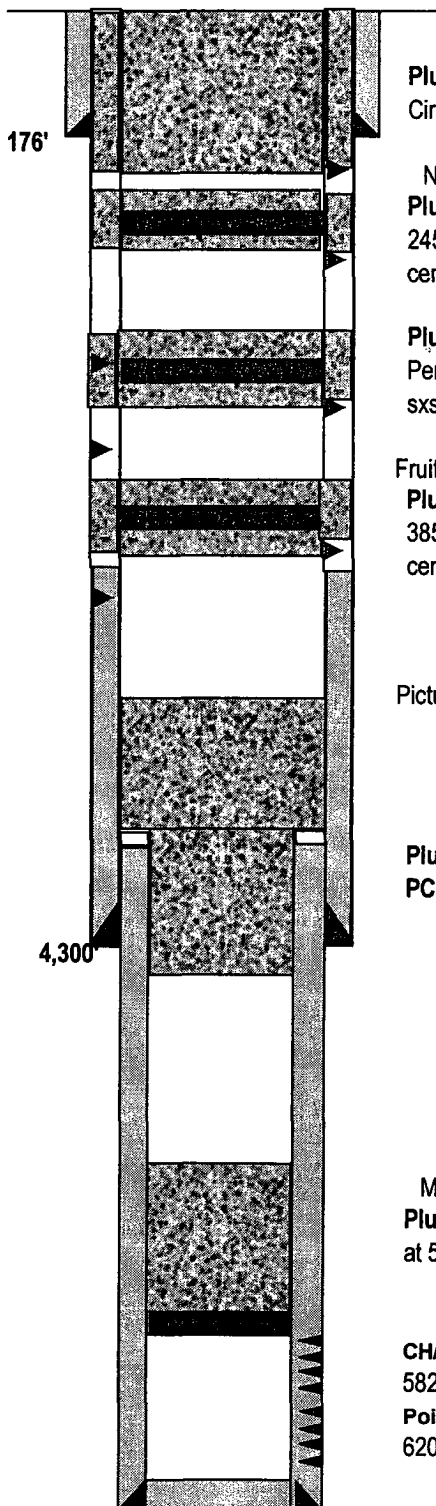
5 1/2" 15.5#

J-55

Cement: 300 sx

TOC @ 4150' by CBL

Set @ 4173-6420



Plug # 6 226' - Surface' '(Surface) Perforate at 226',  
Circulate with 110 sxs cement.

Nacimiento 2400'

Plug #5 2450' - 2550' '(Nacimiento) Perforate at  
2450', cement retainer set at 2400' with 62 sxs  
cement. 32 sxs below retainer and 30 sxs on top.

Plug #4 3722' - 3520' '(Kirtland & Ojo Alamo)  
Perforate at 3722', cement retainer at 3672' with 113  
sxs cement. 64 sxs below retainer and 49 sxs on top.

Fruitland Coal 3,845'

Plug #3 3855' - 3755' '(Fruitland Coal) Perforate at  
3855', cement retainer set at 3845' with 62 sxs  
cement. 32 sxs below retainer and 30 sxs on top.

Pictured Cliffs 4,050'

Plug #2 4350' - 4000' '(Intermediate shoe through  
PC) Inside plug with 63 sxs cement

Mesaverde 5,620'

Plug #1 5779' - 5570' '(Mesaverde) Cement retainer se  
at 5779' with 22 sxs cement on top

CH/MEN

5829-6106

Point Lookout

6206-6362

PBTD= 6,365'

TD= 6,436'

JBC

03/10/05