

District I

1625 N. French Dr., Hobbs, NM 88240  
Phone: (505) 393-6161 Fax: (505) 393-0720

District II

1301 W. Grand Ave., Artesia, NM 88210  
Phone: (505) 748-1283 Fax: (505) 748-9720

District III

1000 Rio Brazos Rd., Aztec, NM 87410  
Phone: (505) 334-6178 Fax: (505) 334-6170

District IV

1220 S. St Francis Dr., Santa Fe, NM 87505  
Phone: (505) 476-3470 Fax: (505) 476-3462

**State of New Mexico**  
**Energy, Minerals and Natural Resources**

**Oil Conservation Division**

**1220 S. St Francis Dr.**

**Santa Fe, NM 87505**

Form C-102  
Permit 127620



**WELL LOCATION AND ACREAGE DEDICATION PLAT**

1. API Number <b>30-045-29354</b>	2. Pool Code 97695	3. Pool Name WC32N14W22; CUTLER
4. Property Code 18725	5. Property Name UTE MOUNTAIN UTE	6. Well No. 040
7. OGRID No. 14538	8. Operator Name BURLINGTON RESOURCES OIL & GAS COMPANY LP	9. Elevation 6135

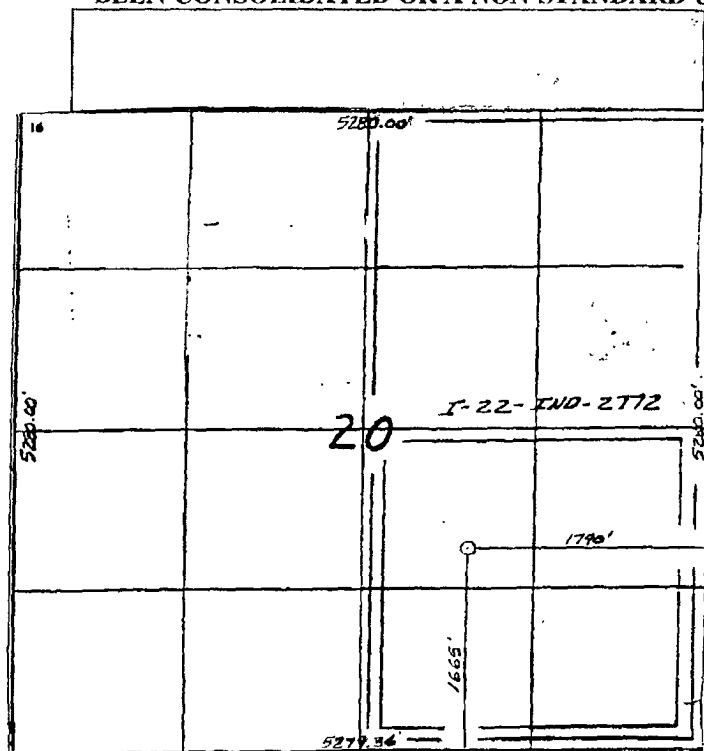
**10. Surface Location**

UL - Lot	Section	Township	Range	Lot Idn	Feet From	N/S Line	Feet From	E/W Line	County
J	20	32N	14W		1665	S	1790	E	SAN JUAN

**11. Bottom Hole Location If Different From Surface**

UL - Lot	Section	Township	Range	Lot Idn	Feet From	N/S Line	Feet From	E/W Line	County
12. Dedicated Acres 160.00		13. Joint or Infill		14. Consolidation Code		15. Order No.			

**NO ALLOWABLE WILL BE ASSIGNED TO THIS COMPLETION UNTIL ALL INTERESTS HAVE BEEN CONSOLIDATED OR A NON-STANDARD UNIT HAS BEEN APPROVED BY THE DIVISION**



**OPERATOR CERTIFICATION**

I hereby certify that the information contained herein is true and complete to the best of my knowledge and belief, and that this organization either owns a working interest or unleased mineral interest in the land including the proposed bottom hole location(s) or has a right to drill this well at this location pursuant to a contract with an owner of such a mineral or working interest, or to a voluntary pooling agreement or a compulsory pooling order heretofore entered by the division.

E-Signed By: *Paley Clayton*  
Title: *Sr. Regulatory Specialist*  
Date: *2/21/2011*

**SURVEYOR CERTIFICATION**

I hereby certify that the well location shown on this plat was plotted from field notes of actual surveys made by me or under my supervision, and that the same is true and correct to the best of my belief.

Surveyed By: Neal Edwards  
Date of Survey: 9/20/1995  
Certificate Number: 6857