

District I  
1625 N. French Dr., Hobbs, NM 88240  
District II  
811 S. First St., Artesia, NM 88210  
District III  
1000 Rio Brazos Road, Aztec, NM 87410  
District IV  
1220 S. St. Francis Dr., Santa Fe, NM 87505

State of New Mexico  
Energy Minerals and Natural Resources  
Department  
Oil Conservation Division  
1220 South St. Francis Dr.  
Santa Fe, NM 87505

Form C-144  
Revised June 6, 2013

For temporary pits, below-grade tanks, and multi-well fluid management pits, submit to the appropriate NMOCD District Office.  
For permanent pits submit to the Santa Fe Environmental Bureau office and provide a copy to the appropriate NMOCD District Office.

Pit, Below-Grade Tank, or  
Proposed Alternative Method Permit or Closure Plan Application

14267

Type of action: ☐ Below grade tank registration  
☐ Permit of a pit or proposed alternative method  
☒ Closure of a pit, below-grade tank, or proposed alternative method  
☐ Modification to an existing permit/or registration  
☐ Closure plan only submitted for an existing permitted or non-permitted pit, below-grade tank, or proposed alternative method

**RECEIVED**  
By kcollins at 7:27 am, Mar 09, 2016

**Instructions:** Please submit one application (Form C-144) per individual pit, below-grade tank or alternative request

Please be advised that approval of this request does not relieve the operator of liability should operations result in pollution of surface water, ground water or the environment. Nor does approval relieve the operator of its responsibility to comply with any other applicable governmental authority's rules, regulations or ordinances.

1.

Operator: Burlington Resources Oil & Gas Company, LP OGRID #: 14538  
Address: PO BOX 4289, Farmington, NM 87499  
Facility or well name: San Juan 30-6 Unit 486S  
API Number: 30-039-27760 OCD Permit Number: \_\_\_\_\_  
U/L or Qtr/Qtr O Section 23 Township 30 N Range 6 W County: Rio Arriba  
Center of Proposed Design: Latitude 36.79278 °N Longitude -107.4293 °W NAD: ☐ 1927 ☒ 1983  
Surface Owner: ☒ Federal ☐ State ☐ Private ☐ Tribal Trust or Indian Allotment

2.

☐ **Pit:** Subsection F, G or J of 19.15.17.11 NMAC  
Temporary: ☐ Drilling ☐ Workover  
☐ Permanent ☐ Emergency ☐ Cavitation ☐ P&A ☐ Multi-Well Fluid Management Low Chloride Drilling Fluid ☐ yes ☐ no  
☐ Lined ☐ Unlined Liner type: Thickness \_\_\_\_\_ mil ☐ LLDPE ☐ HDPE ☐ PVC ☐ Other \_\_\_\_\_  
☐ String-Reinforced  
Liner Seams: ☐ Welded ☐ Factory ☐ Other \_\_\_\_\_ Volume: \_\_\_\_\_ bbl Dimensions: L \_\_\_\_\_ x W \_\_\_\_\_ x D \_\_\_\_\_

3.

☒ **Below-grade tank:** Subsection I of 19.15.17.11 NMAC  
Volume: 120 bbl Type of fluid: Produced Water  
Tank Construction material: Metal  
☐ Secondary containment with leak detection ☒ Visible sidewalls, liner, 6-inch lift and automatic overflow shut-off  
☐ Visible sidewalls and liner ☐ Visible sidewalls only ☐ Other \_\_\_\_\_  
Liner type: Thickness 45 mil ☐ HDPE ☐ PVC ☒ Other LLDPE

4.

☐ **Alternative Method:**  
Submittal of an exception request is required. Exceptions must be submitted to the Santa Fe Environmental Bureau office for consideration of approval.

5.

**Fencing:** Subsection D of 19.15.17.11 NMAC (Applies to permanent pits, temporary pits, and below-grade tanks)  
☐ Chain link, six feet in height, two strands of barbed wire at top (Required if located within 1000 feet of a permanent residence, school, hospital, institution or church)  
☐ Four foot height, four strands of barbed wire evenly spaced between one and four feet  
☐ Alternate. Please specify \_\_\_\_\_

6.

**Netting:** Subsection E of 19.15.17.11 NMAC (*Applies to permanent pits and permanent open top tanks*)

- ☐ Screen ☐ Netting ☐ Other \_\_\_\_\_
- ☐ Monthly inspections (If netting or screening is not physically feasible)

7.

**Signs:** Subsection C of 19.15.17.11 NMAC

- ☐ 12"x 24", 2" lettering, providing Operator's name, site location, and emergency telephone numbers
- ☐ Signed in compliance with 19.15.16.8 NMAC

8.

**Variances and Exceptions:**

Justifications and/or demonstrations of equivalency are required. Please refer to 19.15.17 NMAC for guidance.

***Please check a box if one or more of the following is requested, if not leave blank:***

- ☐ Variance(s): Requests must be submitted to the appropriate division district for consideration of approval.
- ☐ Exception(s): Requests must be submitted to the Santa Fe Environmental Bureau office for consideration of approval.

9.

**Siting Criteria (regarding permitting):** 19.15.17.10 NMAC***Instructions: The applicant must demonstrate compliance for each siting criteria below in the application. Recommendations of acceptable source material are provided below. Siting criteria does not apply to drying pads or above-grade tanks.*****General siting****Ground water is less than 25 feet below the bottom of a low chloride temporary pit or below-grade tank.**

- ☐ NM Office of the State Engineer - iWATERS database search; ☐ USGS; ☐ Data obtained from nearby wells

☐ Yes ☐ No  
☒ NA

**Ground water is less than 50 feet below the bottom of a Temporary pit, permanent pit, or Multi-Well Fluid Management pit.**

NM Office of the State Engineer - iWATERS database search; USGS; Data obtained from nearby wells

☐ Yes ☐ No  
☒ NA

Within incorporated municipal boundaries or within a defined municipal fresh water well field covered under a municipal ordinance adopted pursuant to NMSA 1978, Section 3-27-3, as amended. **(Does not apply to below grade tanks)**

- Written confirmation or verification from the municipality; Written approval obtained from the municipality

☐ Yes ☐ No

Within the area overlying a subsurface mine. **(Does not apply to below grade tanks)**

- Written confirmation or verification or map from the NM EMNRD-Mining and Mineral Division

☐ Yes ☐ No

Within an unstable area. **(Does not apply to below grade tanks)**

- Engineering measures incorporated into the design; NM Bureau of Geology & Mineral Resources; USGS; NM Geological Society; Topographic map

☐ Yes ☐ No

Within a 100-year floodplain. **(Does not apply to below grade tanks)**

- FEMA map

☐ Yes ☐ No

**Below Grade Tanks**

Within 100 feet of a continuously flowing watercourse, significant watercourse, lake bed, sinkhole, wetland or playa lake (measured from the ordinary high-water mark).

- Topographic map; Visual inspection (certification) of the proposed site

☐ Yes ☒ No

Within 200 horizontal feet of a spring or a fresh water well used for public or livestock consumption;

- NM Office of the State Engineer - iWATERS database search; Visual inspection (certification) of the proposed site

☐ Yes ☒ No

**Temporary Pit using Low Chloride Drilling Fluid** (maximum chloride content 15,000 mg/liter)

Within 100 feet of a continuously flowing watercourse, or any other significant watercourse or within 200 feet of any lakebed, sinkhole, or playa lake (measured from the ordinary high-water mark). (Applies to low chloride temporary pits.)

- Topographic map; Visual inspection (certification) of the proposed site

☐ Yes ☐ No

Within 300 feet from a occupied permanent residence, school, hospital, institution, or church in existence at the time of initial application.

- Visual inspection (certification) of the proposed site; Aerial photo; Satellite image

☐ Yes ☐ No

Within 200 horizontal feet of a spring or a private, domestic fresh water well used by less than five households for domestic or stock watering purposes, or 300feet of any other fresh water well or spring, in existence at the time of the initial application.

NM Office of the State Engineer - iWATERS database search; Visual inspection (certification) of the proposed site

☐ Yes ☐ No



Within 100 feet of a wetland.

- US Fish and Wildlife Wetland Identification map; Topographic map; Visual inspection (certification) of the proposed site

☐ Yes ☐ No

### **Temporary Pit Non-low chloride drilling fluid**

Within 300 feet of a continuously flowing watercourse, or any other significant watercourse, or within 200 feet of any lakebed, sinkhole, or playa lake (measured from the ordinary high-water mark).

- Topographic map; Visual inspection (certification) of the proposed site

☐ Yes ☐ No

Within 300 feet from a permanent residence, school, hospital, institution, or church in existence at the time of initial application.

- Visual inspection (certification) of the proposed site; Aerial photo; Satellite image

☐ Yes ☐ No

Within 500 horizontal feet of a spring or a private, domestic fresh water well used by less than five households for domestic or stock watering purposes, or 1000 feet of any other fresh water well or spring, in the existence at the time of the initial application;

- NM Office of the State Engineer - iWATERS database search; Visual inspection (certification) of the proposed site

☐ Yes ☐ No

Within 300 feet of a wetland.

- US Fish and Wildlife Wetland Identification map; Topographic map; Visual inspection (certification) of the proposed site

☐ Yes ☐ No

### **Permanent Pit or Multi-Well Fluid Management Pit**

Within 300 feet of a continuously flowing watercourse, or 200 feet of any other significant watercourse, or lakebed, sinkhole, or playa lake (measured from the ordinary high-water mark).

- Topographic map; Visual inspection (certification) of the proposed site

☐ Yes ☐ No

Within 1000 feet from a permanent residence, school, hospital, institution, or church in existence at the time of initial application.

- Visual inspection (certification) of the proposed site; Aerial photo; Satellite image

☐ Yes ☐ No

Within 500 horizontal feet of a spring or a fresh water well used for domestic or stock watering purposes, in existence at the time of initial application.

- NM Office of the State Engineer - iWATERS database search; Visual inspection (certification) of the proposed site

☐ Yes ☐ No

Within 500 feet of a wetland.

- US Fish and Wildlife Wetland Identification map; Topographic map; Visual inspection (certification) of the proposed site

☐ Yes ☐ No

10.

#### **Temporary Pits, Emergency Pits, and Below-grade Tanks Permit Application Attachment Checklist:** Subsection B of 19.15.17.9 NMAC

**Instructions:** Each of the following items must be attached to the application. Please indicate, by a check mark in the box, that the documents are attached.

- ☐ Hydrogeologic Report (Below-grade Tanks) - based upon the requirements of Paragraph (4) of Subsection B of 19.15.17.9 NMAC
- ☐ Hydrogeologic Data (Temporary and Emergency Pits) - based upon the requirements of Paragraph (2) of Subsection B of 19.15.17.9 NMAC
- ☐ Siting Criteria Compliance Demonstrations - based upon the appropriate requirements of 19.15.17.10 NMAC
- ☐ Design Plan - based upon the appropriate requirements of 19.15.17.11 NMAC
- ☐ Operating and Maintenance Plan - based upon the appropriate requirements of 19.15.17.12 NMAC
- ☐ Closure Plan (Please complete Boxes 14 through 18, if applicable) - based upon the appropriate requirements of Subsection C of 19.15.17.9 NMAC and 19.15.17.13 NMAC

☐ Previously Approved Design (attach copy of design) API Number: \_\_\_\_\_ or Permit Number: \_\_\_\_\_

11.

#### **Multi-Well Fluid Management Pit Checklist:** Subsection B of 19.15.17.9 NMAC

**Instructions:** Each of the following items must be attached to the application. Please indicate, by a check mark in the box, that the documents are attached.

- ☐ Design Plan - based upon the appropriate requirements of 19.15.17.11 NMAC
- ☐ Operating and Maintenance Plan - based upon the appropriate requirements of 19.15.17.12 NMAC
- ☐ A List of wells with approved application for permit to drill associated with the pit.
- ☐ Closure Plan (Please complete Boxes 14 through 18, if applicable) - based upon the appropriate requirements of Subsection C of 19.15.17.9 NMAC and 19.15.17.13 NMAC
- ☐ Hydrogeologic Data - based upon the requirements of Paragraph (4) of Subsection B of 19.15.17.9 NMAC
- ☐ Siting Criteria Compliance Demonstrations - based upon the appropriate requirements of 19.15.17.10 NMAC

☐ Previously Approved Design (attach copy of design) API Number: \_\_\_\_\_ or Permit Number: \_\_\_\_\_



12.  
**Permanent Pits Permit Application Checklist:** Subsection B of 19.15.17.9 NMAC

**Instructions:** Each of the following items must be attached to the application. Please indicate, by a check mark in the box, that the documents are attached.

- ☐ Hydrogeologic Report - based upon the requirements of Paragraph (1) of Subsection B of 19.15.17.9 NMAC
- ☐ Siting Criteria Compliance Demonstrations - based upon the appropriate requirements of 19.15.17.10 NMAC
- ☐ Climatological Factors Assessment
- ☐ Certified Engineering Design Plans - based upon the appropriate requirements of 19.15.17.11 NMAC
- ☐ Dike Protection and Structural Integrity Design - based upon the appropriate requirements of 19.15.17.11 NMAC
- ☐ Leak Detection Design - based upon the appropriate requirements of 19.15.17.11 NMAC
- ☐ Liner Specifications and Compatibility Assessment - based upon the appropriate requirements of 19.15.17.11 NMAC
- ☐ Quality Control/Quality Assurance Construction and Installation Plan
- ☐ Operating and Maintenance Plan - based upon the appropriate requirements of 19.15.17.12 NMAC
- ☐ Freeboard and Overtopping Prevention Plan - based upon the appropriate requirements of 19.15.17.11 NMAC
- ☐ Nuisance or Hazardous Odors, including H<sub>2</sub>S, Prevention Plan
- ☐ Emergency Response Plan
- ☐ Oil Field Waste Stream Characterization
- ☐ Monitoring and Inspection Plan
- ☐ Erosion Control Plan
- ☐ Closure Plan - based upon the appropriate requirements of Subsection C of 19.15.17.9 NMAC and 19.15.17.13 NMAC

13.  
**Proposed Closure:** 19.15.17.13 NMAC

**Instructions:** Please complete the applicable boxes, Boxes 14 through 18, in regards to the proposed closure plan.

- Type: ☐ Drilling ☐ Workover ☐ Emergency ☐ Cavitation ☐ P&A ☐ Permanent Pit ☐ Below-grade Tank ☐ Multi-well Fluid Management Pit  
☐ Alternative
- Proposed Closure Method: ☒ Waste Excavation and Removal  
☐ Waste Removal (Closed-loop systems only)  
☐ On-site Closure Method (Only for temporary pits and closed-loop systems)  
☐ In-place Burial ☐ On-site Trench Burial  
☐ Alternative Closure Method

14.  
**Waste Excavation and Removal Closure Plan Checklist:** (19.15.17.13 NMAC) **Instructions:** Each of the following items must be attached to the closure plan. Please indicate, by a check mark in the box, that the documents are attached.

- ☒ Protocols and Procedures - based upon the appropriate requirements of 19.15.17.13 NMAC
- ☒ Confirmation Sampling Plan (if applicable) - based upon the appropriate requirements of Subsection C of 19.15.17.13 NMAC
- ☒ Disposal Facility Name and Permit Number (for liquids, drilling fluids and drill cuttings)
- ☒ Soil Backfill and Cover Design Specifications - based upon the appropriate requirements of Subsection H of 19.15.17.13 NMAC
- ☒ Re-vegetation Plan - based upon the appropriate requirements of Subsection H of 19.15.17.13 NMAC
- ☒ Site Reclamation Plan - based upon the appropriate requirements of Subsection H of 19.15.17.13 NMAC

15.  
**Siting Criteria (regarding on-site closure methods only):** 19.15.17.10 NMAC

**Instructions:** Each siting criteria requires a demonstration of compliance in the closure plan. Recommendations of acceptable source material are provided below. Requests regarding changes to certain siting criteria require justifications and/or demonstrations of equivalency. Please refer to 19.15.17.10 NMAC for guidance.

Ground water is less than 25 feet below the bottom of the buried waste. - NM Office of the State Engineer - iWATERS database search; USGS; Data obtained from nearby wells	<input type="checkbox"/> Yes <input type="checkbox"/> No <input type="checkbox"/> NA
Ground water is between 25-50 feet below the bottom of the buried waste - NM Office of the State Engineer - iWATERS database search; USGS; Data obtained from nearby wells	<input type="checkbox"/> Yes <input type="checkbox"/> No <input type="checkbox"/> NA
Ground water is more than 100 feet below the bottom of the buried waste. - NM Office of the State Engineer - iWATERS database search; USGS; Data obtained from nearby wells	<input type="checkbox"/> Yes <input type="checkbox"/> No <input type="checkbox"/> NA
Within 100 feet of a continuously flowing watercourse, or 200 feet of any other significant watercourse, lakebed, sinkhole, or playa lake (measured from the ordinary high-water mark). - Topographic map; Visual inspection (certification) of the proposed site	<input type="checkbox"/> Yes <input type="checkbox"/> No
Within 300 feet from a permanent residence, school, hospital, institution, or church in existence at the time of initial application. - Visual inspection (certification) of the proposed site; Aerial photo; Satellite image	<input type="checkbox"/> Yes <input type="checkbox"/> No
Within 300 horizontal feet of a private, domestic fresh water well or spring used for domestic or stock watering purposes, in existence at the time of initial application. - NM Office of the State Engineer - iWATERS database; Visual inspection (certification) of the proposed site	<input type="checkbox"/> Yes <input type="checkbox"/> No
Written confirmation or verification from the municipality; Written approval obtained from the municipality	<input type="checkbox"/> Yes <input type="checkbox"/> No
Within 300 feet of a wetland. US Fish and Wildlife Wetland Identification map; Topographic map; Visual inspection (certification) of the proposed site	<input type="checkbox"/> Yes <input type="checkbox"/> No
Within incorporated municipal boundaries or within a defined municipal fresh water well field covered under a municipal ordinance	



adopted pursuant to NMSA 1978, Section 3-27-3, as amended. - Written confirmation or verification from the municipality; Written approval obtained from the municipality	<input type="checkbox"/> Yes <input type="checkbox"/> No
Within the area overlying a subsurface mine. - Written confirmation or verification or map from the NM EMNRD-Mining and Mineral Division	<input type="checkbox"/> Yes <input type="checkbox"/> No
Within an unstable area. - Engineering measures incorporated into the design; NM Bureau of Geology & Mineral Resources; USGS; NM Geological Society; Topographic map	<input type="checkbox"/> Yes <input type="checkbox"/> No
Within a 100-year floodplain. - FEMA map	<input type="checkbox"/> Yes <input type="checkbox"/> No

16.  
**On-Site Closure Plan Checklist:** (19.15.17.13 NMAC) *Instructions: Each of the following items must be attached to the closure plan. Please indicate, by a check mark in the box, that the documents are attached.*

☐ Siting Criteria Compliance Demonstrations - based upon the appropriate requirements of 19.15.17.10 NMAC  
☐ Proof of Surface Owner Notice - based upon the appropriate requirements of Subsection E of 19.15.17.13 NMAC  
☐ Construction/Design Plan of Burial Trench (if applicable) based upon the appropriate requirements of Subsection K of 19.15.17.11 NMAC  
☐ Construction/Design Plan of Temporary Pit (for in-place burial of a drying pad) - based upon the appropriate requirements of 19.15.17.11 NMAC  
☐ Protocols and Procedures - based upon the appropriate requirements of 19.15.17.13 NMAC  
☐ Confirmation Sampling Plan (if applicable) - based upon the appropriate requirements of 19.15.17.13 NMAC  
☐ Waste Material Sampling Plan - based upon the appropriate requirements of 19.15.17.13 NMAC  
☐ Disposal Facility Name and Permit Number (for liquids, drilling fluids and drill cuttings or in case on-site closure standards cannot be achieved)  
☐ Soil Cover Design - based upon the appropriate requirements of Subsection H of 19.15.17.13 NMAC  
☐ Re-vegetation Plan - based upon the appropriate requirements of Subsection H of 19.15.17.13 NMAC  
☐ Site Reclamation Plan - based upon the appropriate requirements of Subsection H of 19.15.17.13 NMAC

17.  
**Operator Application Certification:**  
 I hereby certify that the information submitted with this application is true, accurate and complete to the best of my knowledge and belief.

Name (Print): \_\_\_\_\_ Title: \_\_\_\_\_  
 Signature: \_\_\_\_\_ Date: \_\_\_\_\_  
 e-mail address: \_\_\_\_\_ Telephone: \_\_\_\_\_

18.  
**OCD Approval:** ☐ Permit Application (including closure plan) ☒ Closure Plan (~~only~~) ☐ OCD Conditions (see attachment)

**OCD Representative Signature:** Janessa Baker **Approval Date:** 04-04-2016  
**Title:** Environmental Specialist **OCD Permit Number:** \_\_\_\_\_

19.  
**Closure Report (required within 60 days of closure completion):** 19.15.17.13 NMAC  
*Instructions: Operators are required to obtain an approved closure plan prior to implementing any closure activities and submitting the closure report. The closure report is required to be submitted to the division within 60 days of the completion of the closure activities. Please do not complete this section of the form until an approved closure plan has been obtained and the closure activities have been completed.*

☒ **Closure Completion Date:** 7/30/14

20.  
**Closure Method:**  
☒ Waste Excavation and Removal ☐ On-Site Closure Method ☐ Alternative Closure Method ☐ Waste Removal (Closed-loop systems only)  
☐ If different from approved plan, please explain.

21.  
**Closure Report Attachment Checklist:** *Instructions: Each of the following items must be attached to the closure report. Please indicate, by a check mark in the box, that the documents are attached.*

☒ Proof of Closure Notice (surface owner and division)  
☐ Proof of Deed Notice (required for on-site closure for private land only)  
☐ Plot Plan (for on-site closures and temporary pits)  
☒ Confirmation Sampling Analytical Results (if applicable)  
☐ Waste Material Sampling Analytical Results (required for on-site closure)  
☐ Disposal Facility Name and Permit Number  
☒ Soil Backfilling and Cover Installation  
☒ Re-vegetation Application Rates and Seeding Technique  
☒ Site Reclamation (Photo Documentation)

On-site Closure Location: Latitude °N Longitude °W NAD: ☐ 1927 ☐ 1983

**Operator Closure Certification:**

I hereby certify that the information and attachments submitted with this closure report is true, accurate and complete to the best of my knowledge and belief. I also certify that the closure complies with all applicable closure requirements and conditions specified in the approved closure plan.

Name (Print): Larissa Farrell \_\_\_\_\_ Title: Regulatory Technician

Signature: Larissa Farrell \_\_\_\_\_ Date: 2-17-16

e-mail address: Larissa.L.Farrell@cop.com Telephone: (505) 326-9504

**Burlington Resources Oil & Gas Company, LP**  
**San Juan Basin**  
**Below Grade Tank Closure Report**

**Lease Name: San Juan 30-6 Unit 486S**

**API No.: 30-039-27760**

In accordance with Rule 19.15.17.13 NMAC the following information describes the closure of the below-grade tank referenced above. All proper documentation regarding closure activities is being included with the C-144.

General Plan:

1. BR shall close a below-grade tank within 60 days of cessation of operations per Subsection G.4 of 19.15.17.13 NMAC. This will include a) below-grade tanks that do not meet the requirements of Paragraphs (1) through (4) of Subsection I of 19.15.17.11 NMAC or is not included in Paragraph (5) of Subsection I of 19.15.17.11 NMAC within five years, if not retrofitted to comply with Paragraphs (1) through (4) of Subsection I of 19.15.17.11 NMAC; b) an earlier date that the division requires because of imminent danger to fresh water, public health or the environment. For any closure, BR will file the C144 Closure Report as required.

**The below-grade tank referenced above was permitted and closed within 60 days of cessation of the below-grade tanks operation.**

2. BR shall remove liquids and sludge from a below-grade tank prior to implementing a closure method and shall dispose of the liquids and sludge in a division-approved facility. The facilities to be used will be Basin Disposal (Permit #NM-01-005), JFJ Landfarm % Industrial Ecosystem Inc. (Permit # NM-01-0010B) and Envirotech Land Farm (Permit #NM-01-011). The liner after being cleaned well (Subsection D, Paragraph 1, Subparagraph (m) of 19.15.9.712 NMAC) will be disposed of at the San Juan County Regional Landfill located on CR 3100.

**All recovered liquids were disposed of at Basin Disposal (Permit #NM-01-005) and any sludge or soil required to be removed to facilitate closure was hauled to Envirotech Land Farm (Permit #NM-01-011) and JFJ Landfarm % IEI (Permit #NM-01-0010B). The liner was cleaned per Subsection D, Paragraph 1, Subparagraph (m) of 19.15.9.712 NMAC was disposed of at the San Juan County Regional Landfill located on CR 3100.**

3. BR will receive prior approval to remove the below-grade tank and dispose of it in a division-approved facility or recycle, reuse, or reclaim it in a manner that the appropriate division district office approves.

**The below-grade tank was disposed of in a division-approved manner.**

4. If there is any on-site equipment associated with a below-grade tank, then BR shall remove the equipment, unless the equipment is required for some other purpose.

**All on-site equipment associated with the below-grade tank was removed.**

5. BR will test the soils beneath the below-grade tank to determine whether a release has occurred. BR shall collect, at a minimum, a five point, composite sample; collect individual grab samples from any area that is wet, discolored or showing other evidence of a release; and analyzed for the constituents listed in Table I of 19.15.17.13 NMAC. COPC shall notify the division of its results on form C-141.



A five point composite sample was taken of the below-grade tank using sampling tools and all samples tested per Subsection B of 19.15.17.1 3(B)(1)(b). (Sample results attached). Form C-141 is attached.

Components	Tests Method	Limit (mg/kg)
Benzene	EPA SW-846 8021B or 8260B	0.2
BTEX	EPA SW-846 8021B or 8260B	50
TPH	EPA SW-846 418.1	100
Chlorides	EPA 300.0	250

6. If BR or the division determines that a release has occurred, then BR shall comply with 19.15.3.116 NMAC and 19.15.1.19 NMAC, as appropriate.

**A release was not determined for the above referenced well.**

7. If the sampling program demonstrates that a release has not occurred or that any release does not exceed the concentrations specified in Table I of 19.15.17.13 NMAC, then BR shall backfill the excavation with compacted, non-waste containing, earthen material; construct a division-prescribed soil cover; recontour and re-vegetate the site.

**The below-grade tank area passed all requirements of Paragraph (4) of Subsection E of 19.15.17.13 NMAC and was backfilled with compacted, non-waste containing, earthen material.**

8. Notice of Closure will be given prior to closure to the Aztec Division office between 72 hours and one week via email or verbally. The notification of closure will include the following:
- Operator's name
  - Location by Unit Letter, Section, Township, and Range. Well name and API number.

**Notification is attached.**

9. The surface owner shall be notified of BR's closing of the below-grade tank 72 hours, but not more than one week, prior to closure as per the approved closure plan via certified mail, return receipt requested.

**The closure process notification to the landowner was not found.**

10. Re-contouring of location will match fit, shape, line, form and texture of the surrounding. Re-shaping will include drainage control, prevent ponding, and prevent erosion. Natural drainages will be unimpeded and water bars and/or silt traps will be place in areas where needed to prevent erosion on a large scale. Final re-contour shall have a uniform appearance with smooth surface, fitting the natural landscape.

**The below-grade tank area was re-contoured to match fit, shape, line, form and texture of the surrounding area. Re-shaping including drainage control, to prevent ponding and erosion. Natural drainages were unimpeded and water bars and/or silt traps were placed in areas where needed to prevent erosion on a large scale. Final recontour has a uniform appearance with smooth surface, fitting the natural landscape.**

11. BR shall seed the disturbed areas the first favorable growing season following closure of a below-grade tank. Seeding will be accomplished via drilling on the contour whenever practical or by other division-approved methods. BLM stipulated seed mixes will used on federally regulated lands and division-approved seed mixtures (administratively approved if required) will be utilized on all State or private lands. A uniform vegetative cover has been established that reflects a life-form ratio of plus or minus fifty percent (50%) of pre- disturbance levels and a total percent plant cover of at least seventy percent (70%) of pre-disturbance levels, excluding noxious weeds. If alternate seed mix is required by the state, private owner or tribe, it will be implemented with administrative approval if needed. COPC will repeat seeding or planting will be continued until successful vegetative growth occurs.



**Provision 13 was accomplished through complying with BLM seeding requirements as allowed by the BLM/OCD MOU.**

12. A minimum of four feet of cover shall be achieved and the cover shall include one foot of suitable material, with chloride concentrations less than 600 mg/kg as analyzed by EPA Method 300.0, to establish vegetation at the site, or the background thickness of topsoil, whichever is greater.

**The below-grade tank area was backfilled and more than four feet of cover was achieved and the cover included one foot of suitable material to establish vegetation at the site.**

13. All closure activities will include proper documentation and be available for review upon request and will be submitted to OCD within 60 days of closure of the below-grade tank. Closure report will be filed on C-144 and incorporate the following:
  - Soil Backfilling and Cover Installation **(See Report)**
  - Re-vegetation application rates and seeding techniques **(See Report)**
  - Photo documentation of the site reclamation **(Included as an attachment)**
  - Confirmation Sampling Results **(Included as an attachment)**
  - Proof of closure notice **(Included as an attachment)**

**From:** [Busse, Dollie L](#)  
**To:** [Cory.Smith@state.nm.us](#); [Brandon.Powell@state.nm.us](#)  
**Cc:** [SIBU E-Team](#); [Payne, Wendy E](#); [Journey, Denise D](#); [Elliott, Darrell](#)  
**Subject:** San Juan 30-6 Unit 486S (3003927760) - 72 Hour BGT Closure Notification  
**Date:** Friday, April 24, 2015 5:48:36 AM

---

**Subject:** 72 Hour BGT Closure Notification

**Anticipated Start Date:** **Wednesday, April 29, 2015**

The subject well has a below-grade tank that will begin the closure process between 72 hours and one week from this notification. Please contact me at any time if you have any questions or concerns.

**Well Name:** San Juan 30-6 Unit 486S

**API#:** 30-039-27760

**Location:** UL O (SWSE), Sec. 23, T30N, R6W

**Footages:** 770' FSL & 1940' FEL

**Operator:** Burlington Resources

**Surface Owner:** BLM

Dollie L. Busse  
Staff Regulatory Technician  
ConocoPhillips Company  
505-324-6104  
505-215-3069  
[Dollie.L.Busse@cop.com](mailto:Dollie.L.Busse@cop.com)



District I  
1625 N. French Dr., Hobbs, NM 88240  
District II  
1301 W. Grand Avenue, Artesia, NM 88210  
District III  
1000 Rio Brazos Road, Aztec, NM 87410  
District IV  
1220 S. St. Francis Dr., Santa Fe, NM 87505

State of New Mexico  
Energy Minerals and Natural Resources

Oil Conservation Division  
1220 South St. Francis Dr.  
Santa Fe, NM 87505

Form C-141  
Revised August 8, 2011

Submit 1 Copy to appropriate District Office to  
accordance with 19.15.29 NMAC.

## Release Notification and Corrective Action

### OPERATOR

☐ Initial Report ☒ Final Report

Name of Company <b>Burlington Resources Oil &amp; Gas LP</b>	Contact <b>Crystal Walker</b>	
Address <b>3401 East 30<sup>th</sup> St, Farmington, NM</b>	Telephone No. <b>(505) 326-9837</b>	
Facility Name: <b>San Juan 30-6 Unit 486S</b>	Facility Type: <b>Gas Well</b>	
Surface Owner <b>Federal</b>	Mineral Owner	API No. <b>30-039-27760</b>

### LOCATION OF RELEASE


Unit Letter <b>O</b>	Section <b>23</b>	Township <b>30N</b>	Range <b>6W</b>	Feet from the <b>770</b>	North/South Line <b>South</b>	Feet from the <b>1940</b>	East/West Line <b>East</b>	County <b>Rio Arriba</b>
-------------------------	----------------------	------------------------	--------------------	-----------------------------	----------------------------------	------------------------------	-------------------------------	-----------------------------

Latitude 36.79278 Longitude -107.4293

### NATURE OF RELEASE

Type of Release	Volume of Release	Volume Recovered
Source of Release	Date and Hour of Occurrence	Date and Hour of Discovery
Was Immediate Notice Given? <input type="checkbox"/> Yes <input type="checkbox"/> No <input checked="" type="checkbox"/> Not Required	If YES, To Whom?	
By Whom?	Date and Hour	
Was a Watercourse Reached? <input type="checkbox"/> Yes <input checked="" type="checkbox"/> No	If YES, Volume Impacting the Watercourse.	
If a Watercourse was Impacted, Describe Fully.* <b>N/A</b>		
Describe Cause of Problem and Remedial Action Taken.* <b>No release was encountered during the BGT Closure.</b>		
Describe Area Affected and Cleanup Action Taken.* <b>N/A</b>		

I hereby certify that the information given above is true and complete to the best of my knowledge and understand that pursuant to NMOCD rules and regulations all operators are required to report and/or file certain release notifications and perform corrective actions for releases which may endanger public health or the environment. The acceptance of a C-141 report by the NMOCD marked as "Final Report" does not relieve the operator of liability should their operations have failed to adequately investigate and remediate contamination that pose a threat to ground water, surface water, human health or the environment. In addition, NMOCD acceptance of a C-141 report does not relieve the operator of responsibility for compliance with any other federal, state, or local laws and/or regulations.

Signature: 	<u>OIL CONSERVATION DIVISION</u>		
Printed Name: Larissa Farrell	Approved by Environmental Specialist:		
Title: <b>Regulatory Technician</b>	Approval Date:	Expiration Date:	
E-mail Address: Larissa.L.Farrell@cop.com	Conditions of Approval:		Attached <input type="checkbox"/>
Date: 2-16-16 Phone: (505) 326-9504			

\* Attach Additional Sheets If Necessary



July 8, 2015

Lisa Hunter  
ConocoPhillips  
San Juan Business Unit  
(505) 326-9786

Via electronic mail to: [SJBUE-Team@ConocoPhillips.com](mailto:SJBUE-Team@ConocoPhillips.com)

**RE: Below Grade Tank Closure Report  
San Juan 30-6 #486S  
Rio Arriba County, New Mexico**

Dear Ms. Hunter:

Animas Environmental Services, LLC (AES) is pleased to provide the final report associated with the below grade tank (BGT) closure at ConocoPhillips (COPC) San Juan 30-6 #486S, located in Rio Arriba County, New Mexico. Tank removal was completed by COPC contractors while AES was on site.

---

## 1.0 Site Information

### 1.1 Location

Site Name – San Juan 30-6 #486S

Legal Description – SW¼ SE¼, Section 23, T30N, R6W, Rio Arriba County, New Mexico

Well Latitude/Longitude – N36.79316 and W107.42973, respectively

BGT Latitude/Longitude – N36.79321 and W107.42977, respectively

Land Jurisdiction – Bureau of Land Management (BLM)

Figure 1. Topographic Site Location Map

Figure 2. Aerial Site Map, April 2015

### 1.2 NMOCD Ranking

In accordance with the New Mexico Oil Conservation Division (NMOCD) *Guidelines for Remediation of Leaks, Spills, and Releases* (August 1993), the location was given a ranking score of 0 based on the following factors:

604 W. Piñon St.  
Farmington, NM 87401  
505-564-2281

1911 Main, Ste 280  
Durango, CO 81301  
970-403-3084



- **Depth to Groundwater:** A cathodic protection report dated May 1991 reported depth to water at 130 feet below ground surface (bgs). (0 points)
- **Wellhead Protection Area:** The tank location is not within a wellhead protection area. (0 points)
- **Distance to Surface Water Body:** An unnamed wash which ultimately discharges to La Jara Canyon is located approximately 1,080 feet east of the location. (0 points)

### 1.3 BGT Closure Assessment

AES was initially contacted by Jess Hensen of COPC on April 28, 2015, and on April 29, 2015, Dylan Davis of AES mobilized to the location. AES personnel collected one 5-point soil sample composited from four perimeter samples and one center sample of the BGT footprint from below the BGT liner.

---

## 2.0 Soil Sampling

On April 29, 2015, AES personnel conducted field sampling and collected one 5-point composite (SC-1) from below the BGT. Soil was collected from approximately 0.5 feet below the former BGT. Soil sample SC-1 was field screened for volatile organic compounds (VOCs), total petroleum hydrocarbon (TPH), and chloride, and was also submitted for confirmation laboratory analysis. Soil sample locations are included on Figure 2.

### 2.1 Field Sampling

#### 2.1.1 Volatile Organic Compounds

A portion of SC-1 was utilized for field screening of VOC vapors with a photo-ionization detector (PID) organic vapor meter (OVM). Before beginning field screening, the PID-OVM was first calibrated with 100 parts per million (ppm) isobutylene gas.

#### 2.1.2 Total Petroleum Hydrocarbons

Soil sample SC-1 was also analyzed in the field for TPH per U.S. Environmental Protection Agency (USEPA) Method 418.1 using a Buck Scientific Model HC-404 Total Hydrocarbon Analyzer Infrared Spectrometer (Buck). A 3-point calibration was completed prior to conducting soil analyses. Field analytical protocol followed AES's *Standard Operating Procedure: Field Analysis Total Petroleum Hydrocarbons per EPA Method 418.1*.

### 2.1.3 Chlorides

Soil sample SC-1 was field screened for chlorides using Chloride Drop Count Titration with silver nitrate. Sampling and analysis methods followed procedures provided by Hach Company.

## 2.2 Laboratory Analyses

The composite soil sample SC-1 collected for laboratory analysis was placed into a new, clean, laboratory-supplied container, which was then labeled, placed on ice, and logged onto a sample chain of custody record. The sample was maintained on ice until delivery to the analytical laboratory, Hall Environmental Analysis Laboratory (Hall), in Albuquerque, New Mexico. Soil sample SC-1 was laboratory analyzed for:

- Benzene, toluene, ethylbenzene, and xylene (BTEX) per USEPA Method 8021B;
- TPH per USEPA Method 418.1; and
- Chloride per USEPA Method 300.0.

## 2.3 Field and Laboratory Analytical Results

Field screening readings for VOCs via OVM were measured at 0.0 ppm in SC-1. Field TPH concentrations were reported at 45.2 mg/kg. The field chloride concentration was 40 mg/kg. Field sampling results are summarized in Table 1 and presented on Figure 2. The AES Field Sampling Report is attached.

Table 1. Soil Field VOCs, TPH, and Chloride Results  
San Juan 30-6 #486S BGT Closure, April 2015

<i>Sample ID</i>	<i>Date Sampled</i>	<i>Depth below BGT (ft)</i>	<i>VOCs OVM Reading (ppm)</i>	<i>Field TPH (mg/kg)</i>	<i>Field Chlorides (mg/kg)</i>
<b>NMOCDA Action Level (NMAC 19.15.17.13E)</b>			--	100	250
SC-1	4/29/15	0.5	0.0	45.2	40

Laboratory analytical results reported benzene and total BTEX concentrations in SC-1 as less than 0.048 mg/kg and 0.241 mg/kg, respectively. TPH concentrations were reported at 42 mg/kg. The laboratory chloride concentration was reported at 1.6 mg/kg. Laboratory analytical results are summarized in Table 2 and included on Figure 2. The laboratory analytical report is attached.



Table 2. Soil Laboratory Analytical Results  
San Juan 30-6 #486S BGT Closure, April 2015

Sample ID	Date Sampled	Depth (ft)	Benzene (mg/kg)	Total BTEX (mg/kg)	TPH (mg/kg)	Chlorides (mg/kg)
NMOCD Action Level (NMAC 19.15.17.13E)			0.2	50	100	250
SC-1	4/29/15	0.5	<0.048	<0.241	42	1.6

### 3.0 Conclusions and Recommendations

NMOCD action levels for BGT closures are specified in New Mexico Administrative Code (NMAC) 19.15.17.13E. Field TPH concentrations in SC-1 were below the NMOCD action level of 100 mg/kg, with a concentration reported at 45.2 mg/kg. Benzene and total BTEX concentrations were below the NMOCD action levels of 0.2 mg/kg and 50 mg/kg, respectively. Chloride concentrations in SC-1 were below the NMOCD action level of 250 mg/kg. Based on field sampling and laboratory analytical results for benzene, total BTEX, TPH, and chlorides, no further work is recommended at San Juan 30-6 #486S.

If you have any questions about this report or site conditions, please do not hesitate to contact me at (505) 564-2281.

Sincerely,



Emilee Skyles  
Geologist



Elizabeth McNally, P.E.

#### Attachments:

- Figure 1. Topographic Site Location Map
- Figure 2. Aerial Site Map, April 2015
- AES Field Sampling Report 042915
- Hall Analytical Report 1504D18

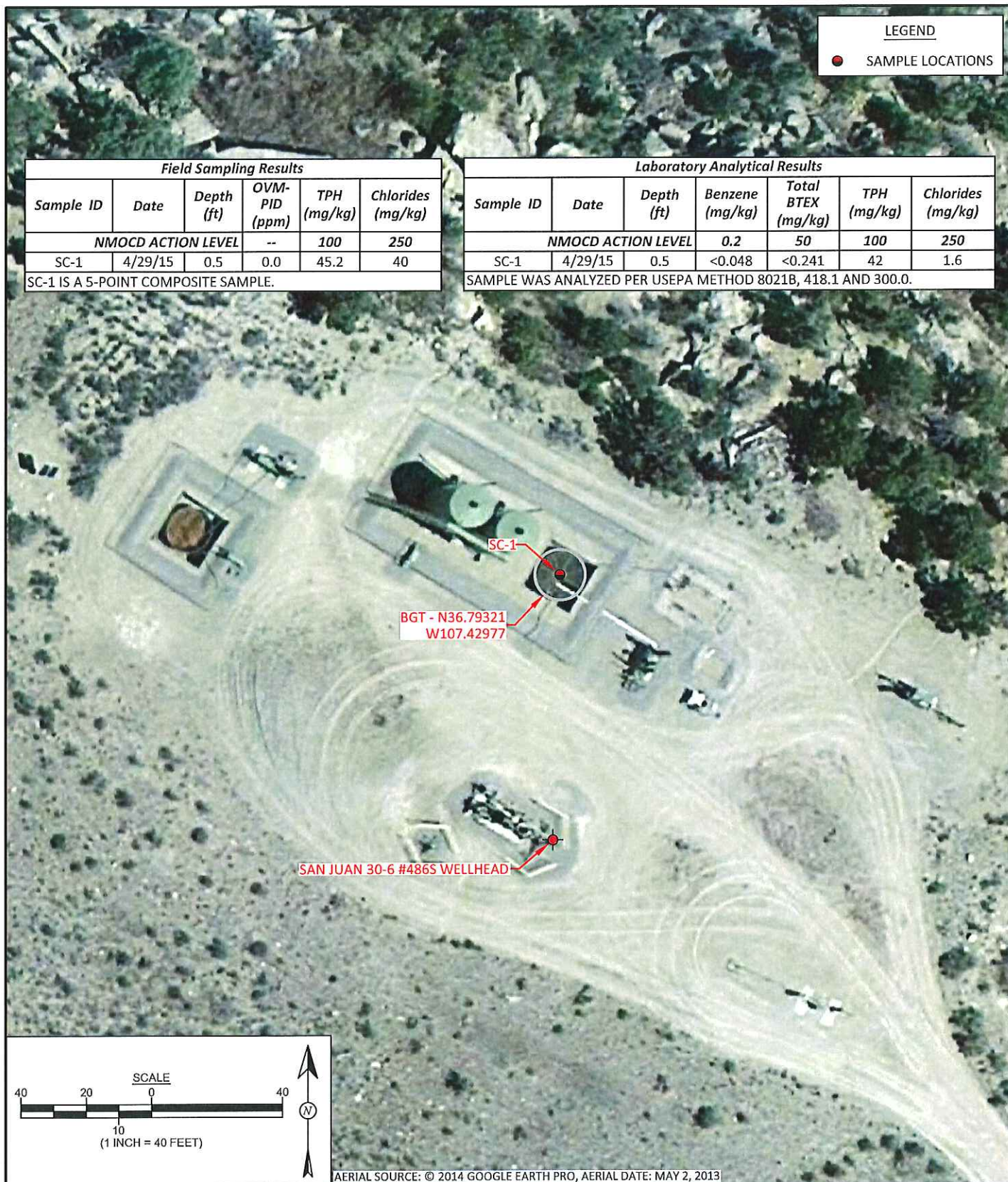
*Lisa Hunter*  
*San Juan 30-6 #486S BGT Closure Report*  
*July 8, 2015*  
*Page 5 of 5*

C:\Users\eskyles\Dropbox (Animas Environmental)\0000 Animas Server Dropbox EM (1)\2015  
Projects\ConocoPhillips\SJ 30-6 #486S\COPC SJ 30-6 #486S BGT Closure Report 070815.docx









<div style="display: flex; align-items: center;"> <div style="background-color: #e67e22; color: white; padding: 10px; font-size: 2em; margin-right: 10px;">AES</div> </div> <p>Animas Environmental Services, LLC</p>	<b>DRAWN BY:</b> S. Glasses	<b>DATE DRAWN:</b> May 4, 2015	<div style="text-align: center;"> <b>FIGURE 2</b>   <b>AERIAL SITE MAP BELOW GRADE TANK CLOSURE APRIL 2015</b>            ConocoPhillips            SAN JUAN 30-6 #486S            SW¼ SE¼, SECTION 23, T30N, R6W            RIO ARriba COUNTY, NEW MEXICO            N36.79316, W107.42973         </div>
	<b>REVISIONS BY:</b> C. Lameman	<b>DATE REVISED:</b> May 4, 2015	
	<b>CHECKED BY:</b> E. Skyles	<b>DATE CHECKED:</b> May 4, 2015	
	<b>APPROVED BY:</b> E. McNally	<b>DATE APPROVED:</b> May 4, 2015	



## AES Field Sampling Report

Animas Environmental Services, LLC



Client: ConocoPhillips

Project Location: San Juan 30-6 #4865

Date: 4/29/2015

Matrix: Soil

Sample ID	Collection Date	Collection Time	Sample Location	OVM (ppm)	Field Chloride (mg/kg)	Field TPH* (mg/kg)	Field TPH Analysis Time	TPH PQL (mg/kg)	DF	TPH Analysts Initials
SC-1	4/29/2015	12:35	Composite	0.0	40	45.2	13:00	20.0	1	DD

DF Dilution Factor

NA Not Analyzed

PQL Practical Quantitation Limit

\*Field TPH concentrations recorded may be below PQL.

Field Chloride - Quantab Chloride Titrators or Drop Count

Titration with Silver Nitrate

Total Petroleum Hydrocarbons - USEPA 418.1

Analyst: *Dylan Daw*



*Hall Environmental Analysis Laboratory  
4901 Hawkins NE  
Albuquerque, NM 87109  
TEL: 505-345-3975 FAX: 505-345-4107  
Website: [www.hallenvironmental.com](http://www.hallenvironmental.com)*

May 06, 2015

Emilee Skyles  
Animas Environmental  
604 Pinon Street  
Farmington, NM 87401  
TEL: (505) 564-2281  
FAX

RE: SJ30-6 #486S

OrderNo.: 1504D18

Dear Emilee Skyles:

Hall Environmental Analysis Laboratory received 1 sample(s) on 4/30/2015 for the analyses presented in the following report.

These were analyzed according to EPA procedures or equivalent. To access our accredited tests please go to [www.hallenvironmental.com](http://www.hallenvironmental.com) or the state specific web sites. In order to properly interpret your results it is imperative that you review this report in its entirety. See the sample checklist and/or the Chain of Custody for information regarding the sample receipt temperature and preservation. Data qualifiers or a narrative will be provided if the sample analysis or analytical quality control parameters require a flag. When necessary, data qualifers are provided on both the sample analysis report and the QC summary report, both sections should be reviewed. All samples are reported, as received, unless otherwise indicated. Lab measurement of analytes considered field parameters that require analysis within 15 minutes of sampling such as pH and residual chlorine are qualified as being analyzed outside of the recommended holding time.

Please don't hesitate to contact HEAL for any additional information or clarifications.

ADHS Cert #AZ0682 -- NMED-DWB Cert #NM9425 -- NMED-Micro Cert #NM0190

Sincerely,

A handwritten signature in black ink, appearing to read "Andy Freeman", is written over a horizontal line.

Andy Freeman  
Laboratory Manager  
4901 Hawkins NE  
Albuquerque, NM 87109

**Analytical Report**

Lab Order 1504D18

Date Reported: 5/6/2015

**Hall Environmental Analysis Laboratory, Inc.****CLIENT:** Animas Environmental**Client Sample ID:** SC-1**Project:** SJ30-6 #486S**Collection Date:** 4/29/2015 12:35:00 PM**Lab ID:** 1504D18-001**Matrix:** SOIL**Received Date:** 4/30/2015 6:50:00 AM

Analyses	Result	RL	Qual	Units	DF	Date Analyzed	Batch
<b>EPA METHOD 8021B: VOLATILES</b>							Analyst: <b>NSB</b>
Methyl tert-butyl ether (MTBE)	ND	0.097		mg/Kg	1	5/4/2015 11:58:30 PM	19008
Benzene	ND	0.048		mg/Kg	1	5/4/2015 11:58:30 PM	19008
Toluene	ND	0.048		mg/Kg	1	5/4/2015 11:58:30 PM	19008
Ethylbenzene	ND	0.048		mg/Kg	1	5/4/2015 11:58:30 PM	19008
Xylenes, Total	ND	0.097		mg/Kg	1	5/4/2015 11:58:30 PM	19008
Surr: 4-Bromofluorobenzene	99.9	80-120		%REC	1	5/4/2015 11:58:30 PM	19008
<b>EPA METHOD 300.0: ANIONS</b>							Analyst: <b>LGT</b>
Chloride	1.6	1.5		mg/Kg	1	5/5/2015 3:16:29 PM	19058
<b>EPA METHOD 418.1: TPH</b>							Analyst: <b>KJH</b>
Petroleum Hydrocarbons, TR	42	20		mg/Kg	1	5/5/2015	19031

Refer to the QC Summary report and sample login checklist for flagged QC data and preservation information.

<b>Qualifiers:</b>	*	Value exceeds Maximum Contaminant Level.	B	Analyte detected in the associated Method Blank	Page 1 of 4
	E	Value above quantitation range	H	Holding times for preparation or analysis exceeded	
	J	Analyte detected below quantitation limits	ND	Not Detected at the Reporting Limit	
	O	RSD is greater than RSDlimit	P	Sample pH Not In Range	
	R	RPD outside accepted recovery limits	RL	Reporting Detection Limit	
	S	Spike Recovery outside accepted recovery limits			



# QC SUMMARY REPORT

## Hall Environmental Analysis Laboratory, Inc.

WO#: 1504D18

06-May-15

Client: Animas Environmental

Project: SJ30-6 #486S

Sample ID	LCS-19058	SampType:	LCS	TestCode:	EPA Method 300.0: Anions					
Client ID:	LCSS	Batch ID:	19058	RunNo:	25994					
Prep Date:	5/5/2015	Analysis Date:	5/5/2015	SeqNo:	770613	Units:	mg/Kg			
Analyte	Result	PQL	SPK value	SPK Ref Val	%REC	LowLimit	HighLimit	%RPD	RPDLimit	Qual
Chloride	14	1.5	15.00	0	93.0	90	110			

Sample ID	1504D18-001AMS	SampType:	MS	TestCode:	EPA Method 300.0: Anions					
Client ID:	SC-1	Batch ID:	19058	RunNo:	25994					
Prep Date:	5/5/2015	Analysis Date:	5/5/2015	SeqNo:	770617	Units:	mg/Kg			
Analyte	Result	PQL	SPK value	SPK Ref Val	%REC	LowLimit	HighLimit	%RPD	RPDLimit	Qual
Chloride	15	1.5	15.00	1.557	90.5	71.6	122			

Sample ID	1504D18-001AMSD	SampType:	MSD	TestCode:	EPA Method 300.0: Anions					
Client ID:	SC-1	Batch ID:	19058	RunNo:	25994					
Prep Date:	5/5/2015	Analysis Date:	5/5/2015	SeqNo:	770618	Units:	mg/Kg			
Analyte	Result	PQL	SPK value	SPK Ref Val	%REC	LowLimit	HighLimit	%RPD	RPDLimit	Qual
Chloride	15	1.5	15.00	1.557	91.7	71.6	122	1.10	20	

### Qualifiers:

- \* Value exceeds Maximum Contaminant Level.
- E Value above quantitation range
- J Analyte detected below quantitation limits
- O RSD is greater than RSDlimit
- R RPD outside accepted recovery limits
- S Spike Recovery outside accepted recovery limits

- B Analyte detected in the associated Method Blank
- H Holding times for preparation or analysis exceeded
- ND Not Detected at the Reporting Limit
- P Sample pH Not In Range
- RL Reporting Detection Limit

# QC SUMMARY REPORT

## Hall Environmental Analysis Laboratory, Inc.

WO#: 1504D18

06-May-15

Client: Animas Environmental

Project: SJ30-6 #486S

Sample ID	MB-19031	SampType: MBLK			TestCode: EPA Method 418.1: TPH					
Client ID:	PBS	Batch ID: 19031			RunNo: 25970					
Prep Date:	5/4/2015	Analysis Date: 5/5/2015			SeqNo: 769673		Units: mg/Kg			
Analyte	Result	PQL	SPK value	SPK Ref Val	%REC	LowLimit	HighLimit	%RPD	RPDLimit	Qual
Petroleum Hydrocarbons, TR	ND	20								

Sample ID	LCS-19031	SampType: LCS			TestCode: EPA Method 418.1: TPH					
Client ID:	LCSS	Batch ID: 19031			RunNo: 25970					
Prep Date:	5/4/2015	Analysis Date: 5/5/2015			SeqNo: 769674		Units: mg/Kg			
Analyte	Result	PQL	SPK value	SPK Ref Val	%REC	LowLimit	HighLimit	%RPD	RPDLimit	Qual
Petroleum Hydrocarbons, TR	100	20	100.0	0	103	86.7	126			

Sample ID	LCSD-19031	SampType: LCSD			TestCode: EPA Method 418.1: TPH					
Client ID:	LCSS02	Batch ID: 19031			RunNo: 25970					
Prep Date:	5/4/2015	Analysis Date: 5/5/2015			SeqNo: 769675		Units: mg/Kg			
Analyte	Result	PQL	SPK value	SPK Ref Val	%REC	LowLimit	HighLimit	%RPD	RPDLimit	Qual
Petroleum Hydrocarbons, TR	100	20	100.0	0	101	86.7	126	2.50	20	

### Qualifiers:

- \* Value exceeds Maximum Contaminant Level.
- E Value above quantitation range
- J Analyte detected below quantitation limits
- O RSD is greater than RSDlimit
- R RPD outside accepted recovery limits
- S Spike Recovery outside accepted recovery limits

- B Analyte detected in the associated Method Blank
- H Holding times for preparation or analysis exceeded
- ND Not Detected at the Reporting Limit
- P Sample pH Not In Range
- RL Reporting Detection Limit

# QC SUMMARY REPORT

## Hall Environmental Analysis Laboratory, Inc.

WO#: 1504D18

06-May-15

Client: Animas Environmental

Project: SJ30-6 #486S

Sample ID	MB-19008	SampType:	MBLK	TestCode:	EPA Method 8021B: Volatiles					
Client ID:	PBS	Batch ID:	19008	RunNo:	25928					
Prep Date:	5/1/2015	Analysis Date:	5/4/2015	SeqNo:	768844	Units:	mg/Kg			
Analyte	Result	PQL	SPK value	SPK Ref Val	%REC	LowLimit	HighLimit	%RPD	RPDLimit	Qual
Methyl tert-butyl ether (MTBE)	ND	0.10								
Benzene	ND	0.050								
Toluene	ND	0.050								
Ethylbenzene	ND	0.050								
Xylenes, Total	ND	0.10								
Surr: 4-Bromofluorobenzene	1.1		1.000		105	80	120			

Sample ID	LCS-19008	SampType:	LCS	TestCode:	EPA Method 8021B: Volatiles					
Client ID:	LCSS	Batch ID:	19008	RunNo:	25928					
Prep Date:	5/1/2015	Analysis Date:	5/4/2015	SeqNo:	768845	Units:	mg/Kg			
Analyte	Result	PQL	SPK value	SPK Ref Val	%REC	LowLimit	HighLimit	%RPD	RPDLimit	Qual
Methyl tert-butyl ether (MTBE)	1.1	0.10	1.000	0	111	69.8	143			
Benzene	1.1	0.050	1.000	0	111	76.6	128			
Toluene	1.1	0.050	1.000	0	110	75	124			
Ethylbenzene	1.1	0.050	1.000	0	112	79.5	126			
Xylenes, Total	3.3	0.10	3.000	0	111	78.8	124			
Surr: 4-Bromofluorobenzene	1.2		1.000		116	80	120			

### Qualifiers:

- |                                                   |                                                      |
|---------------------------------------------------|------------------------------------------------------|
| * Value exceeds Maximum Contaminant Level.        | B Analyte detected in the associated Method Blank    |
| E Value above quantitation range                  | H Holding times for preparation or analysis exceeded |
| J Analyte detected below quantitation limits      | ND Not Detected at the Reporting Limit               |
| O RSD is greater than RSDlimit                    | P Sample pH Not In Range                             |
| R RPD outside accepted recovery limits            | RL Reporting Detection Limit                         |
| S Spike Recovery outside accepted recovery limits |                                                      |





Hall Environmental Analysis Laboratory  
4901 Hawkins NE  
Albuquerque, NM 87109  
TEL: 505-345-3975 FAX: 505-345-4107  
Website: www.hallenvironmental.com

## Sample Log-In Check List

Client Name: **Animas Environmental**

Work Order Number: **1504D18**

RcptNo: **1**

Received by/date:

*A.T.*

*04/30/15*

Logged By: **Ashley Gallegos**

**4/30/2015 6:50:00 AM**

*[Signature]*

Completed By: **Ashley Gallegos**

**4/30/2015 3:38:18 PM**

*[Signature]*

Reviewed By:

*[Signature]*

*05/01/15*

### Chain of Custody

1. Custody seals intact on sample bottles? Yes ☐ No ☐ Not Present ☒
2. Is Chain of Custody complete? Yes ☒ No ☐ Not Present ☐
3. How was the sample delivered? Courier

### Log In

4. Was an attempt made to cool the samples? Yes ☒ No ☐ NA ☐
5. Were all samples received at a temperature of  $>0^{\circ}\text{C}$  to  $6.0^{\circ}\text{C}$ ? Yes ☒ No ☐ NA ☐
6. Sample(s) in proper container(s)? Yes ☒ No ☐
7. Sufficient sample volume for indicated test(s)? Yes ☒ No ☐
8. Are samples (except VOA and ONG) properly preserved? Yes ☒ No ☐
9. Was preservative added to bottles? Yes ☐ No ☒ NA ☐
10. VOA vials have zero headspace? Yes ☐ No ☐ No VOA Vials ☒
11. Were any sample containers received broken? Yes ☐ No ☒
12. Does paperwork match bottle labels?  
(Note discrepancies on chain of custody) Yes ☒ No ☐
13. Are matrices correctly identified on Chain of Custody? Yes ☒ No ☐
14. Is it clear what analyses were requested? Yes ☒ No ☐
15. Were all holding times able to be met?  
(If no, notify customer for authorization.) Yes ☒ No ☐
- # of preserved bottles checked for pH: \_\_\_\_\_  
( $<2$  or  $>12$  unless noted)  
Adjusted? \_\_\_\_\_  
Checked by: \_\_\_\_\_

### Special Handling (if applicable)

16. Was client notified of all discrepancies with this order? Yes ☐ No ☐ NA ☒

Person Notified:

Date

By Whom:

Via:

☐ eMail

☐ Phone

☐ Fax

☐ In Person

Regarding:

Client Instructions:

17. Additional remarks:

### 18. Cooler Information

Cooler No	Temp $^{\circ}\text{C}$	Condition	Seal Intact	Seal No	Seal Date	Signed By
1	1.0	Good	Yes			









