

UNITED STATES
DEPARTMENT OF THE INTERIOR
BUREAU OF LAND MANAGEMENT

RECEIVED

AUG 24 2016

FORM APPROVED
OMB No. 1004-0137
Expires: July 31, 2010

SUNDRY NOTICES AND REPORTS ON WELLS
Do not use this form for proposals to drill or to re-enter an abandoned well. Use Form 3160-3 (APD) for such proposals.

SUBMIT IN TRIPLICATE - Other instructions on page 2.

1. Type of Well

☐ Oil Well

☒ Gas Well

☐ Other

2. Name of Operator

Burlington Resources Oil & Gas Company LP

3a. Address

PO Box 4289, Farmington, NM 87499

3b. Phone No. (include area code)

(505) 326-9700

4. Location of Well (Footage, Sec., T., R., M., or Survey Description)

Surface Unit G (SWNE), 1340' FNL & 2349' FEL, Sec. 25, T28N, R5W

5. Lease Serial No.

SF-079520-A

6. Indian, Allottee or Tribe Name

7. If Unit of CA/Agreement, Name and/or No.

San Juan 28-5 Unit

8. Well Name and No.

San Juan 28-5 Unit 46

9. API Well No.

30-039-07342

10. Field and Pool or Exploratory Area

Blanco Mesaverde

11. Country or Parish, State

Rio Arriba New Mexico

12. CHECK THE APPROPRIATE BOX(ES) TO INDICATE NATURE OF NOTICE, REPORT OR OTHER DATA

TYPE OF SUBMISSION

☒ Notice of Intent

☐ Subsequent Report

☐ Final Abandonment Notice

TYPE OF ACTION

☐ Acidize

☐ Alter Casing

☐ Casing Repair

☐ Change Plans

☐ Convert to Injection

☐ Deepen

☐ Fracture Treat

☐ New Construction

☐ Plug and Abandon

☐ Plug Back

☐ Production (Start/Resume)

☐ Reclamation

☐ Recomplete

☐ Temporarily Abandon

☐ Water Disposal

☐ Water Shut-Off

☐ Well Integrity

☒ Other

13. Describe Proposed or Completed Operation: Clearly state all pertinent details, including estimated starting date of any proposed work and approximate duration thereof. If the proposal is to deepen directionally or recompleat horizontally, give subsurface locations and measured and true vertical depths of all pertinent markers and zones. Attach the bond under which the work will be performed or provide the Bond No. on file with BLM/BIA. Required subsequent reports must be filed within 30 days following completion of the involved operations. If the operation results in a multiple completion or recompleat in a new interval, a Form 3160-4 must be filed once Testing has been completed. Final Abandonment Notices must be filed only after all requirements, including reclamation, have been completed and the operator has determined that the site is ready for final inspection.)

Burlington Resources requests permission to P&A the subject well per the attached procedure, current and proposed wellbore schematics. The pre-disturbance visit was held on 8/15/2016 with Bob Switzer; the Re-Vegetation Plan is attached. A Closed Loop system will be utilized.

Notify NMOCD 24 hrs
prior to beginning
operations

AUG 26 2016

BLM'S APPROVAL OR ACCEPTANCE OF THIS ACTION DOES NOT RELIEVE THE LESSEE AND OPERATOR FROM OBTAINING ANY OTHER AUTHORIZATION REQUIRED FOR OPERATIONS ON FEDERAL AND INDIAN LANDS

**SEE ATTACHED FOR
CONDITIONS OF APPROVAL**

14. I hereby certify that the foregoing is true and correct. Name (Printed/Typed)

Dollie L. Busse

Title **Regulatory Technician**

Signature

Date

8/24/16

THIS SPACE FOR FEDERAL OR STATE OFFICE USE

Approved by

Title **PE**

Date

8/26/16

Conditions of approval, if any, are attached. Approval of this notice does not warrant or certify that the applicant holds legal or equitable title to those rights in the subject lease which would entitle the applicant to conduct operations thereon.

Office

FFO

Title 18 U.S.C. Section 1001 and Title 43 U.S.C. Section 1212, make it a crime for any person knowingly and willfully to make to any department or agency of the United States any false, fictitious or fraudulent statements or representations as to any matter within its jurisdiction.

ConocoPhillips
SAN JUAN 28-5 UNIT 46
Expense - P&A

Lat 36° 38' 8.124" N

Long 107° 18' 28.188" W

PROCEDURE

Note: This project will require additional bulk trucks to accommodate required cement volumes.

This project requires the use of a steel tank to handle waste fluids circulated from the well and cement wash up.

1. Hold pre-job safety meeting. Comply with all NMOCD, BLM, and COP safety and environmental regulations. Test rig anchors prior to moving in rig.
2. MIRU workover rig. Check casing, tubing, and bradenhead pressures and record them in WellView. **If there is pressure on the BH, contact the Wells Engineer.**
3. Remove existing piping on casing valve. RU blow lines from casing valves and begin blowing down casing pressure. Kill well as necessary. Ensure well is dead or on a vacuum.
4. ND wellhead and NU BOPE. Pressure and function test BOP to 250 psi low and 1000 psi over SICP high to a maximum of 2000 psi held and charted for 10 minutes per COP Well Control Manual.
5. RU wireline. PU gauge ring for 2-7/8" 6.5# J-55 casing and round trip as deep as possible above top of fish at 1,265'. PU jet cutter for 2-7/8" casing and RIH to cut casing above fish at 1,265'.
6. TOO H and LD 2-7/8" casing.
7. PU 6-1/4" bit and watermelon mill and round trip as deep as possible above 2-7/8" casing stub at +/- 1,265'.
8. PU CR for 7" casing on tubing, and set at 1,215' (+/- 50' above 2-7/8" casing stub). Pressure test tubing to 1000 psi. Sting out of CR. Load hole, and pressure test casing to 800 psi. If casing does not test, spot or tag subsequent plugs as appropriate. POOH with tubing.

All cement volumes use 100% excess outside pipe and 50' excess inside pipe. The stabilizing wellbore fluid will be 8.3 ppg, sufficient to balance all exposed formation pressures. All cement will be ASTM Class B mixed at 15.6 ppg with a 1.18 cf/sk yield.

9. Plug 1 (Perforations, Mesaverde, Pictured Cliffs, Fruitland, Kirtland, and Ojo Alamo formation tops, 1165-5831', 675 sacks Class B cement)

Mix 675 sacks Class B cement. Squeeze 664 sacks plug under retainer to cover the perforations, Mesaverde, Pictured Cliffs, Fruitland, Kirtland, and Ojo Alamo formation tops. Sting out or retainer. Balance 10 sacks on top of retainer. POOH.

10. Plug 2 (Fruitland, Kirtland, and Ojo Alamo formation tops, 1050-3525', 638 sacks Class B cement)

RIH and perforate 3 squeeze holes at 1,150'. Establish injection rate into squeeze holes. RIH with a CR for 7" casing and set at 1,100'. Mix 638 sacks Class B cement. Squeeze 618 sacks outside the casing, leaving 20 sacks inside the casing to cover the Fruitland, Kirtland, and Ojo Alamo formation tops. POOH.

11. Plug 3 (Surface plug, 0-182', 104 sacks Class B cement)

RU WL and perforate 4 big hole charge (if available) squeeze holes at 182'. TOO H and RD wireline. **Observe well for 30 minutes per BLM regulations.** RU pump, close blind rams and establish circulation out bradenhead with water. Circulate BH clean. TIH with CR for 7" casing and set at 132'. Mix 70 sacks Class B cement and squeeze until good cement returns to surface out BH valve. Shut BH valve and squeeze to max 200 psi. Sting out of CR and reverse circulate cement out of tubing. TOO H and LD stinger. TIH with open ended tubing to 132'. Mix 34 sacks Class B cement and pump inside plug. TOO H and LD Tubing. SI well and WOC.

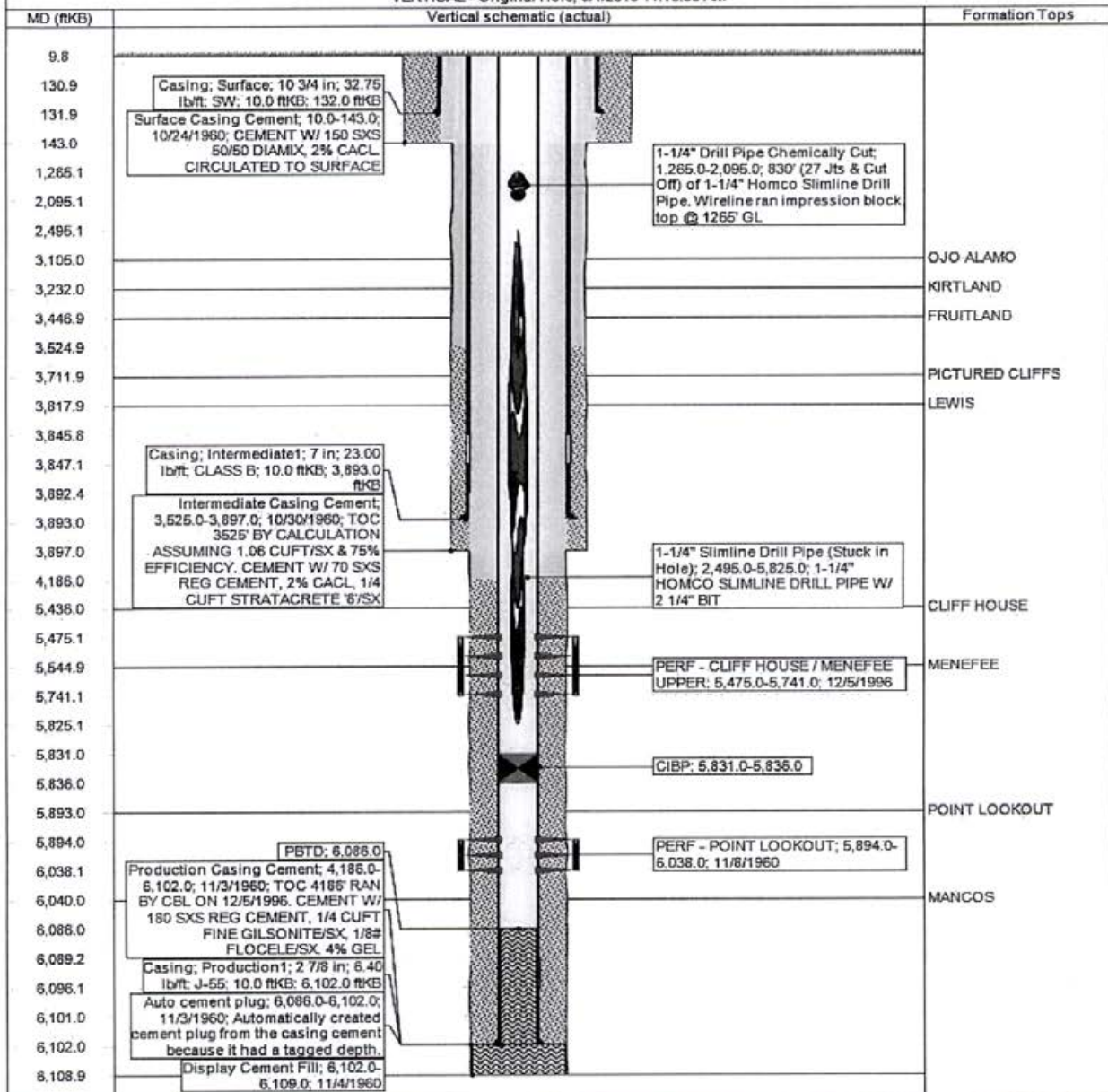
12. Nipple down BOP and cut off casing below the casing flange. Install P&A marker with cement to comply with regulations. RDMO.



Schematic - Current
SAN JUAN 28-5 UNIT #46

District SOUTH	Field Name BLANCO MV (PRO #0078	API / UWI 3003907342	County RIO ARRIBA	State/Province NEW MEXICO	
Original Spud Date 10/23/1960	Surface Legal Location 025-028N-005W-G	East/West Distance (ft) 2,349.00	East/West Reference FEL	North/South Distance (ft) 1,340.00	North/South Reference FNL

VERTICAL - Original Hole, 8/1/2016 11:16:39 AM



Schematic - Proposed
SAN JUAN 28-5 UNIT #46

District SOUTH	Field Name BLANCO MV (PRO #0078	API / UWI 3003907342	County RIO ARRIBA	State/Province NEW MEXICO
Original Spud Date 10/23/1960	Surf Loc 025-028N-005W-G	East/West Distance (ft) 2,349.00	East/West Reference FEL	N/S Dist (ft) 1,340.00
		North/South Reference FNL		

VERTICAL - Original Hole, 1/1/2020 2:30:00 AM

Vertical schematic (actual)		MD (ftKB)	Formation Tops
1; Surface; 10 3/4 in; 10.192 in; 10.0 ftKB; 132.0 ftKB Cement Retainer; 132.0-134.0	Plug #3; 10.0-182.0; 1/1/2020 Surface Casing Cement; 10.0- 143.0; 10/24/1960; CEMENT W/ 150 SXS 50/50 DIAMIX, 2% CACL CIRCULATED TO SURFACE Plug #3; 10.0-182.0; 1/1/2020; MIX 70 SX CLASS B CMT AND SQZ UNTIL GOOD CMT RETURNS TO SURFACE CUT BH VALVE. MIX 34 SX CLASS B CMT AND PUMP INSIDE PLUG.	9.8 130.9 131.9 133.9 143.0 162.1 1,049.9 1,100.1 1,102.0 1,149.9 1,165.0 1,214.9 1,216.9 1,265.1 2,095.1 2,495.1 3,105.0 3,232.0 3,446.9 3,524.9 3,711.9 3,617.9 3,845.8 3,847.1 3,892.4 3,893.0 3,897.0 4,186.0 5,436.0 5,475.1 5,544.9 5,741.1 5,825.1 5,831.0 5,836.0 5,890.0 5,894.0 6,038.1 6,040.0 6,066.0 6,089.2 6,096.1 6,101.0 6,102.0 6,108.9	
SQUEEZE PERFS; 182.0; 1/1/2020 Cement Retainer; 1,100.0- 1,102.0 SQUEEZE PERFS; 1,150.0; 1/1/2020 Cement Retainer; 1,215.0- 1,217.0 1-1/4" Drill Pipe Chemically Cut; 1,265.0-2,095.0; 830' (27 Jts & Cut Off) of 1-1/4" Homco Slimline Drill Pipe. Wireline ran impression block, top @ 1265' GL	Plug #2; 1,050.0-1,150.0; 1/1/2020; MIX 638 SX CLASS B CMT, SQZ 618 SX OUTSIDE THE CSG, LEAVING 20 SX INSIDE THE CSG TO COVER THE FRUITLAND, KIRTLAND, AND OJO ALAMO FORMATION TOPS Plug #2; 1,050.0-3,525.0; 1/1/2020		
2; Intermediate1; 7 in; 6.366 in; 10.0 ftKB; 3,893.0 ftKB 1-1/4" Slimline Drill Pipe (Stuck in Hole); 2,495.0-5,825.0; 1-1/4" HOMCO SLIMLINE DRILL PIPE W/ 2 1/4" BIT PERF - CLIFF HOUSE / MENELEE UPPER; 5,475.0- 5,741.0; 12/5/1996 CIBP; 5,831.0-5,836.0 PERF - POINT LOOKOUT; 5,894.0-6,038.0; 11/8/1960 PBDT; 6,086.0 3; Production1; 2 7/8 in; 2,441 in; 1,265.0 ftKB; 6,102.0 ftKB	Intermediate Casing Cement; 3,525.0-3,897.0; 10/30/1960; TOC 3525' BY CALCULATION ASSUMING 1.06 CUFT/SX & 75% EFFICIENCY. CEMENT W/ 70 SXS REG CEMENT, 2% CACL, 1/4 CUFT STRATACRETE 6/SX Plug #1a; 1,165.0-5,831.0; 1/1/2020 Plug #1; 1,165.0-5,831.0; 1/1/2020; MIX 675 SX CLASS B CMT, SQZ 665 SX PLUG UNDER RETAINER TO COVER THE PERFS, MV, PC, FRUITLAND, KIRTLAND AND OJO ALAMO FORMATION TOPS. BALANCE 10 SX ON TOP OF RETAINER Production Casing Cement; 4,186.0 -6,102.0; 11/3/1960; TOC 4186' RAN BY CBL ON 12/5/1996. CEMENT W/ 180 SXS REG CEMENT, 1/4 CUFT FINE GILSONITE/SX, 1/8# FLOCCE/SX, 4% GEL Auto cement plug; 6,086.0-6,102.0; 11/3/1960; Automatically created cement plug from the casing cement because it had a tagged depth. Display Cement Fill; 6,102.0- 6,109.0; 11/4/1960		OJO ALAMO KIRTLAND FRUITLAND PICTURED C... LEWIS CLIFF HOUSE MENELEE POINT LOOK... MANCOS

UNITED STATES DEPARTMENT OF THE INTERIOR
BUREAU OF LAND MANAGEMENT
FARMINGTON DISTRICT OFFICE
6251 COLLEGE BLVD.
FARMINGTON, NEW MEXICO 87402

Attachment to notice of
Intention to Abandon:

Re: Permanent Abandonment
Well: San Juan 28-5 Unit #46

CONDITIONS OF APPROVAL

1. Plugging operations authorized are subject to the attached "General Requirements for Permanent Abandonment of Wells on Federal and Indian Lease."
2. Farmington Office is to be notified at least 24 hours before the plugging operations commence (505) 564-7750.

Operator must run a CBL to verify cement top. Submit the electronic copy of the log for verification to the following addresses: tsalyers@blm.gov jwsavage@blm.gov Brandon.Powell@state.nm.us

You are also required to place cement excesses per 4.2 and 4.4 of the attached General Requirements.

Office Hours: 7:45 a.m. to 4:30 p.m.