

9/22/20

DISTRICT I

1625 N. French Dr., Hobbs, N.M. 88240
Phone: (575) 393-6161 Fax: (575) 393-0720

DISTRICT II

811 S. First St., Artesia, N.M. 88210
Phone: (575) 748-1283 Fax: (575) 748-9720

DISTRICT III

1000 Rio Brazos Rd., Aztec, N.M. 87410
Phone: (505) 334-6178 Fax: (505) 334-6170

DISTRICT IV

1220 S. St. Francis Dr., Santa Fe, N.M. 87505
Phone: (505) 476-3460 Fax: (505) 476-3462

State of New Mexico
Energy, Minerals & Natural Resources Department

OIL CONSERVATION DIVISION

1220 South St. Francis Dr.
Santa Fe, N.M. 87505

As-Drilled

Form C-102

Revised August 1, 2011

Submit one copy to appropriate
District Office

☐ AMENDED REPORT

WELL LOCATION AND ACREAGE DEDICATION PLAT

¹ API Number 30-045-30813		² Pool Code 71629		³ Pool Name Basin Fruitland Coal	
⁴ Property Code 7764		⁵ Property Name Da on Pah			⁶ Well Number 1R
⁷ GRID No. 014634		⁸ Operator Name Mustang Resources			⁹ Elevation 5950

¹⁰ Surface Location

UL or lot no.	Section	Township	Range	Lot Idn	Feet from the	North/South line	Feet from the	East/West line	County
H	35	27 N	12 W		1719	North	1246	East	San Juan

¹¹ Bottom Hole Location If Different From Surface

UL or lot no.	Section	Township	Range	Lot Idn	Feet from the	North/South line	Feet from the	East/West line	County

¹² Dedicated Acres 160		¹³ Joint or Infill	¹⁴ Consolidation Code	¹⁵ Order No. NSA 1574
---	--	-------------------------------	----------------------------------	--

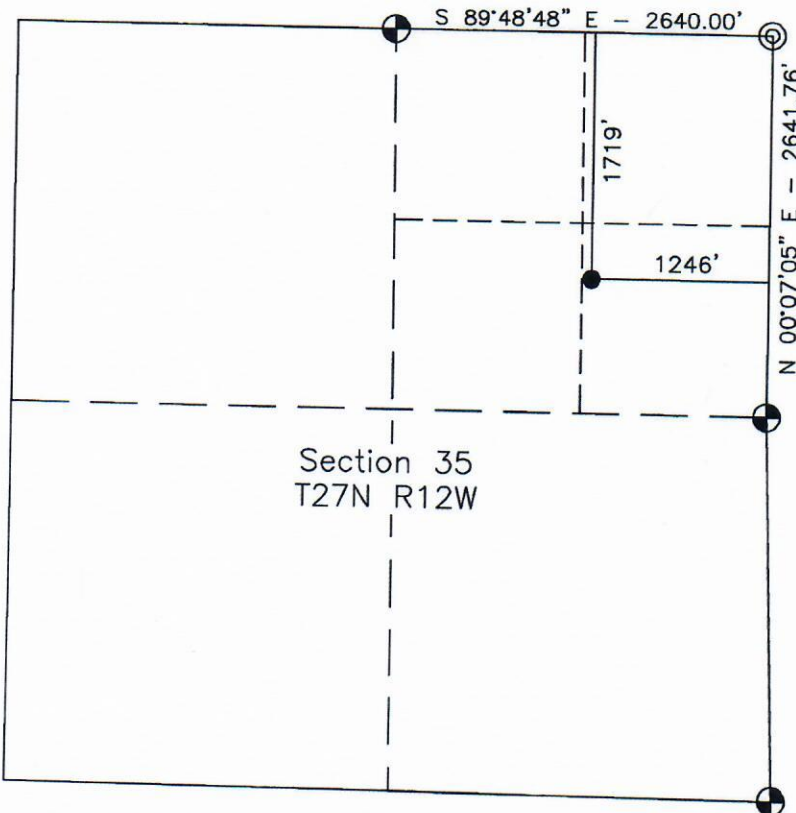
NO ALLOWABLE WILL BE ASSIGNED TO THIS COMPLETION UNTIL ALL INTERESTS HAVE BEEN CONSOLIDATED
OR A NON-STANDARD UNIT HAS BEEN APPROVED BY THE DIVISION

¹⁶ Legend:

- = Surface Location
- ⊙ = Found 5/8" Rebar
- ⊕ = Found 1911 USGLO B.C.

Surface Location

Lat = 36.5341957° N
Long = 108.0762597° W
NAD 83



¹⁷ OPERATOR CERTIFICATION

I hereby certify that the information contained herein is true and complete to the best of my knowledge and belief, and that this organization either owns a working interest or unleased mineral interest in the land including the proposed bottom hole location or has a right to drill this well at this location pursuant to a contract with an owner of such a mineral or working interest, or to a voluntary pooling agreement or a compulsory pooling order heretofore entered by the division.

Signature: *Donald E. Johnson* Date: **9/21/20**
Printed Name: **Donald E. Johnson**
E-mail Address: **djohnson@mustangresourcesllc.com**

¹⁸ SURVEYOR CERTIFICATION

I hereby certify that the well location shown on this plat was plotted from field notes of actual surveys made by me or under my supervision, and that the same is true and correct to the best of my belief.

9/18/20

Date of Survey

Signature and Seal of Professional Surveyor

Marshall W. Lindeen
17078

9-19-20
PROFESSIONAL SURVEYOR

Certificate Number

AV

Correct SHL-
Resurvey