

4/26/20

Form C-102

DISTRICT I
1625 N. French Dr., Hobbs, N.M. 88240
Phone: (575) 393-6161 Fax: (575) 393-0720

State of New Mexico
Energy, Minerals & Natural Resources Department

Revised August 1, 2011

DISTRICT II
811 S. First St., Artesia, N.M. 88210
Phone: (575) 748-1283 Fax: (575) 748-9720

OIL CONSERVATION DIVISION

Submit one copy to appropriate
District Office

DISTRICT III
1000 Rio Brazos Rd., Aztec, N.M. 87410
Phone: (505) 334-6178 Fax: (505) 334-6170

1220 South St. Francis Dr.
Santa Fe, N.M. 87505

DISTRICT IV
1220 S. St. Francis Dr., Santa Fe, N.M. 87505
Phone: (505) 476-3460 Fax: (505) 476-3462

AS-DRILLED

☐ AMENDED REPORT

WELL LOCATION AND ACREAGE DEDICATION PLAT

¹ API Number 30-045-08091	² Pool Code 72319	³ Pool Name BLANCO MESAVERDE
⁴ Property Code 318835	⁵ Property Name ROELOFS B	⁶ Well Number 001
⁷ OGRID No.	⁸ Operator Name BP America Production Company	⁹ Elevation 6683

¹⁰ Surface Location

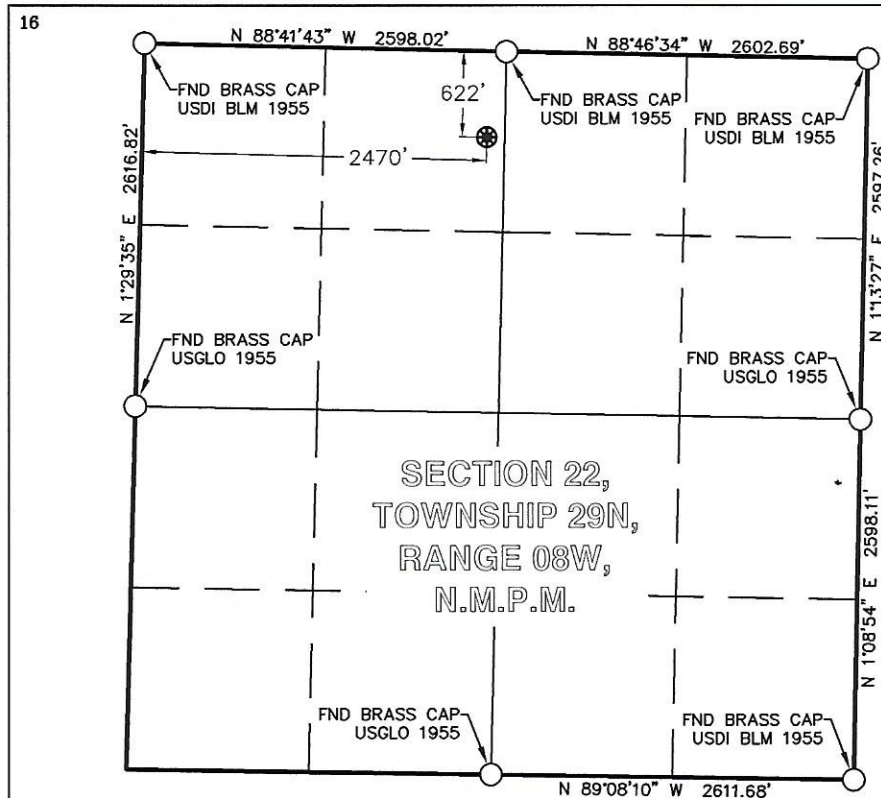
UL or lot no.	Section	Township	Range	Lot Idn	Feet from the	North/South line	Feet from the	East/West line	County
C	22	29 N	08 W		622	NORTH	2470	WEST	SAN JUAN

¹¹ Bottom Hole Location If Different From Surface

UL or lot no.	Section	Township	Range	Lot Idn	Feet from the	North/South line	Feet from the	East/West line	County

¹² Dedicated Acres 320	¹³ Joint or Infill	¹⁴ Consolidation Code	¹⁵ Order No.
--------------------------------------	-------------------------------	----------------------------------	-------------------------

NO ALLOWABLE WILL BE ASSIGNED TO THIS COMPLETION UNTIL ALL INTERESTS HAVE BEEN CONSOLIDATED
OR A NON-STANDARD UNIT HAS BEEN APPROVED BY THE DIVISION



LEGEND

FOUND MONUMENT ○
AS-DRILLED SURFACE HOLE LOCATION *

ROELOFS B 001	NMSPC ZONE 3003	NAD'83	TIES
AS-DRILLED SURFACE HOLE LOCATION (SHL)	N (Y) = 2,080,212.94' E (X) = 2,772,802.35'	LAT. = 36.71662944°N LON. = 107.66372340°W	FNL = 622' FWL = 2470'

¹⁷ OPERATOR CERTIFICATION

I hereby certify that the information contained herein is true and complete to the best of my knowledge and belief, and that this organization either owns a working interest or unleased mineral interest in the land including the proposed bottom hole location or has a right to drill this well at this location pursuant to a contract with an owner of such a mineral or working interest, or to a voluntary pooling agreement or a compulsory pooling order heretofore entered by the division.

Signature _____ Date _____

Printed Name _____

E-mail Address _____

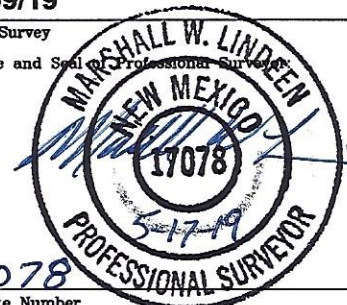
¹⁸ SURVEYOR CERTIFICATION

I hereby certify that the well location shown on this plat was plotted from field notes of actual surveys made by me or under my supervision, and that the same is true and correct to the best of my belief.

5/09/19

Date of Survey

Signature and Seal of Professional Surveyor



17078
Certificate Number

LOCATION RESURVEYED FOOTAGES AND LAT AND LONG UPDATED

AV