

Submit 1 Copy To Appropriate District Office  
District I – (575) 393-6161  
1625 N. French Dr., Hobbs, NM 88240  
District II – (575) 748-1283  
811 S. First St., Artesia, NM 88210  
District III – (505) 334-6178  
1000 Rio Brazos Rd., Aztec, NM 87410  
District IV – (505) 476-3460  
1220 S. St. Francis Dr., Santa Fe, NM 87505

State of New Mexico  
Energy, Minerals and Natural Resources

OCD Received  
8/6/2020

Form C-103  
Revised July 18, 2013

OIL CONSERVATION DIVISION  
1220 South St. Francis Dr.  
Santa Fe, NM 87505

WELL API NO. 30-039-05554
5. Indicate Type of Lease STATE <input type="checkbox"/> FEE <input checked="" type="checkbox"/>
6. State Oil & Gas Lease No.
7. Lease Name or Unit Agreement Name CANYON LARGO UNIT
8. Well Number 20
9. OGRID Number 372171
10. Pool name or Wildcat BALLARD PICTURED CLIFFS

SUNDRY NOTICES AND REPORTS ON WELLS (DO NOT USE THIS FORM FOR PROPOSALS TO DRILL OR TO DEEPEN OR PLUG BACK TO A DIFFERENT RESERVOIR. USE "APPLICATION FOR PERMIT" (FORM C-101) FOR SUCH PROPOSALS.)	
1. Type of Well: Oil Well <input type="checkbox"/> Gas Well <input checked="" type="checkbox"/> Other	
2. Name of Operator HILCORP ENERGY COMPANY	
3. Address of Operator 382 Road 3100, Aztec, NM 87410	
4. Well Location Unit Letter <u>P</u> : <u>990</u> feet from the <u>SOUTH</u> line and <u>990</u> feet from the <u>EAST</u> line Section <u>12</u> Township <u>024N</u> Range <u>06W</u> NMPM RIO ARRIBA County	
11. Elevation (Show whether DR, RKB, RT, GR, etc.) 6446	

12. Check Appropriate Box to Indicate Nature of Notice, Report or Other Data

NOTICE OF INTENTION TO:		SUBSEQUENT REPORT OF:	
PERFORM REMEDIAL WORK <input type="checkbox"/>	PLUG AND ABANDON <input type="checkbox"/>	REMEDIAL WORK <input type="checkbox"/>	ALTERING CASING <input type="checkbox"/>
TEMPORARILY ABANDON <input type="checkbox"/>	CHANGE PLANS <input type="checkbox"/>	COMMENCE DRILLING OPNS. <input type="checkbox"/>	P AND A <input checked="" type="checkbox"/>
PULL OR ALTER CASING <input type="checkbox"/>	MULTIPLE COMPL <input type="checkbox"/>	CASING/CEMENT JOB <input type="checkbox"/>	
DOWNHOLE COMMINGLE <input type="checkbox"/>			
CLOSED-LOOP SYSTEM <input type="checkbox"/>			
OTHER: <input type="checkbox"/>		OTHER: <input type="checkbox"/>	

13. Describe proposed or completed operations. (Clearly state all pertinent details, and give pertinent dates, including estimated date of starting any proposed work). SEE RULE 19.15.7.14 NMAC. For Multiple Completions: Attach wellbore diagram of proposed completion or recompletion.

Hilcorp Energy plugged & abandoned the subject well on 7/27/2020 per the attached notification, summary report and wellbore schematic.

Approved for plugging of wellbore only. Liability under bond is retained pending Receipt of C-103 (Subsequent Report of Well Plugging) which may be found @ OCD web page under forms  
[www.emnrd.state.us/ocd](http://www.emnrd.state.us/ocd)

PNR ONLY

Spud Date:

Rig Release Date:

I hereby certify that the information above is true and complete to the best of my knowledge and belief.

SIGNATURE Etta Trujillo TITLE Operations/Regulatory Technician – Sr. DATE 08/06/20

Type or print name Etta Trujillo E-mail address: ettrujillo@hilcorp.com PHONE: (505) 324-5161

**For State Use Only**

APPROVED BY: Brandon Randall TITLE District III Supervisor DATE 10/19/2020

Conditions of Approval (if any):

AV

Hilcorp Energy  
Company  
382 Road 3100  
Aztec, NM 87410



Name: Canyon Largo Unit #20  
API:30-039-05554

## Well Plugging Report

---

### Work Detail

07/21/2020

Load supplies & Equip. Road Pump Truck #210 & Equip to LOC.  
Spot in Equip. RU Pump Truck.  
Wait on BW #101 to make RT 5-1/2" Scraper to 2085'.  
MU 5-1/2" TBG Set CIBP. TIH to 2078', set CIBP, S/O.  
Load Well W/ 35 BBL H<sub>2</sub>O, CIRC W/ 60 BBL Total, PSI Test CSG to 600#, loss 50#  
in 10 MINS, no Test. (Will need to WOC Plug #1).  
TOOH, LD Setting Tool.  
RU A-Plus WL, RIH to 2078', run CBL. TOC @ 900'-1575'; void from 1575'-2078'.  
POOH, LD Tool, RD WL.  
WOO, approval by Monica Kuehing of NMOCD & Joe Killins of BLM to Pump 100'  
Balanced Plug on top of CIBP @ 2078'-1978' to cover PC PERFS & Top, TOOH,  
PERF @ 1886', Set TBG CR @ 1836'. Pump Outside Plug from 1886'-1610' to  
cover Fruitland & Kirtland Tops combined. S/O Pump Balanced Plug from 1836'-  
1495' to cover Ojo Alamo Top.  
Plug #1 (Revised) PC PERFS & Top 2078'-1978' Mix & Pump 12 SXS, 15.8 PPG,  
1.15 Yield, 13.8 CUFT, 2.4 BBL Slurry, Class G Cement, DISP W/ 7.5 BBL H<sub>2</sub>O.  
LD 5 JTS, SB 12 STDS.  
Secure Well & LOC.  
Travel to Yard.

07/22/2020

Load supplies, travel to LOC.  
HSM on JSA, service & start Equip.  
Check PSI TBG-0, CSG-0, BH-0 PSI, open Well to Pit.  
TIH, Tag Plug #1 @ 1992', notify Monica Kuehling of NMOCD Tag Approved Good,  
LD to next Plug, TOOH, LD Tag Sub.  
Load Well W/ 4-1/2 BBL H<sub>2</sub>O, attempt to PSI Test to 600 PSI, BD 50# in 10 MINS,  
no Test.  
R U A-Plus WL, RIH to 1886', shoot 4 Holes W/ 3-1/8" TAG Gun, POOH, LD Tool,  
check ROI 1/2 BPM @ 1100 PSI, WOO, Orders from Monica Kuehling of NMOCD  
to Isolate Fruitland Top from Kirtland Top, pump Plug #1A 100' Plug Outside 5-  
1/2" CSG 1886'-1786', (No Excess), Pump 100' balanced Plug above CR @ 1836'-  
1736' to cover Fruitland Top, verify Tag. RD WL.  
Plug #1A Fruitland top 1886'-1736': Mix & Pump 33 SXS W/ 2% CC, 15.8 PPG,  
1.15 Yield, 37.9 CUFT, 6.7 BBL Slurry, Class G Cement, leaving 15 SXS Outside 5-  
1/2" CSG, 6 SXS in CSG below CR, 12 SXS in CSG above CR, DISP W/ 6 BBL H<sub>2</sub>O,  
Final S/O Pressure 750 PSI.  
LD 6 JTS, SB 25 STDS, LD Stinger.  
WOC.  
MU Tag Sub, TIH, Tag Plug #1A @ 1725'.  
Travel to Yard.

07/23/2020

Load Supplies travel to Location.  
HSM JSA BW 101, Service Equipment.  
RU A-Plus WL RIH with perforating gun and perf 3 - 3 1/8" holes at 1685'. POOH with perf gun and LD.  
RU pump to 5 1/2" CSG and load with 3.5 BBLs water shut rams and attempt to establish rate into perforations pumped away 1 BBL pressure to 1500 psi unable to establish rate. Wait on orders. NMOCD Monica K. approved spotting inside plug from 1725' to 1495'. (Approvals thru Hilcorp Rep.)  
MU plugging Sub TIH with TBG to 1725'. RU pump to tbg establish circulation with 1 BBL water.  
Plug #1B (Kirtland and OJO Alamo) Mix and Pump 60 SXS 1.15 yield, 69 cuft, 2% calcium, 15.7# "G" cement. plug from 1725' to 1209'.  
LD 15 TBG JTS to 1267' TOOHH with 19 STDs.  
WOC  
MU plugging sub TIH with TBG tag plug #1B at 1235' LD TBG to 639' TOOHH with 10 STDS LD Plugging SUB.  
RU WL RIH and perforate 3 - 3 1/8" holes at 742' POOH with WL  
RU pump to csg and Establish rate into perfs at 742' at 2 BPM at 400 psi. MU 5 1/2" CR TIH and set CR at 692' sting out and RU pump to TBG establish circulation out CSG shut in CSG valve Attempt pressure test pressure to 600 psi lost 10 psi in 10 minutes no test. sting into CR establish rate into perfs.  
Plug #2 (Nacimiento) Mix and Pump 54 SXS, 1.15 yield, 62.1 cuft, 15.6# "G" cement with 31 sxs outside, 6 SXS Below CR, and 17 sxs above CR. From 742' to 546'.  
LD TBG to 511' TOOHH LD setting tool shut in well. Secure Location. SDFN  
Travel to Yard.

07/24/2020

Load supplies, travel to LOC.  
HSM on JSA, service & start Equip.  
Check PSI TBG-N/A, CSG-0, BH-0 PSI, open Well to Pit.  
TIH, Tag Plug #2 @ 520', good Tag, LD Work String, LD TAG Sub.  
RU A-Plus WL, RIH to 148', shoot 4 Holes W/ 3-1/8" TAG Gun, POOH, LD Tool, RD WL.  
RU Pump Hose to CSG Load Well (5-1/2" CSG X 8-5/8" Annulus) W/ 15 BBL H2O, CIRC 30 BBL Total, saw good Returns @ Pit.  
RD Work Floor, ND BOP, NU WH.  
Plug #3 Surface 148'-0' Mix & Pump 118 SXS, 15.8 PPG, 1.15 Yield, 135.7 CUFT, 24.1 BBL Slurry, Class G Cement, @ APPROX 84 SXS in CIRC was lost @ Pit through BH Valve, continue to Pump 34 SXS CIRC never returned.  
Pump 20 BBL H2O down CSG S/I Well.  
Wait 1 HR, RU to Pump down CSG, Pump 10 BBL H2O, RU to BH Valve, Pump 10 BBL H2O, saw no Returns to Pit.  
Orders from Hilcorp Rep to Pump 100 SXS W/ 2% Calcium down CSG, try to get Cement behind CSG, WOC over Weekend.  
Plug #3A Surface Mix & Pump 100 SXS, 15.8 PPG, 1.15 Yield, 115 CUFT, 20.4 BBL Slurry, Class G Cement, DISP W/ 7 BBL H2O.  
Secure Well & LOC.  
Travel to Yard.

Load supplies, travel to LOC.  
HSM on JSA, service & start Equip.  
Check PSI TBG-N/A, CSG-0, BH-0 PSI, open Well to Pit, ND WH, NU BOP, RU Work Floor.  
PSI Test CSG & BH to 750 PSI for 30 MINS, good Test.  
RU A-Plus WL, RIH to 148', run CBL, TOC @ 146'. POOH, TD Tool. RIH to 75', shoot 4 Holes W/ 3-1/8" TAG Gun, POOH, LD Tool, RD WL.  
Check ROI, load Well W/ 1/2 BBL H2O, 1.5 BPM @ 300 PSI, TIH W/ TBG to 148'.  
Plug #3B Surface 148'-0' Mix & Pump 42 SXS, 15.8 PPG, 1.15 Yield, 48.3 CUFT, 8.6 BBL Slurry, Class G Cement, saw good Cement Returns from both CSG & BH Valves.  
LD Work String, RD Work Floor, ND BOP, NU WH.  
Dig out Cellar, wait for Cement Sample to set.  
Perform Hot Work Permit for WH Cut Off, cut off WH, TOC @ Surface on both 5-1/2" CSG & 5-1/2" X 8-5/8" Annulus, install & weld DH Marker @ LAT 36.322787 LONG -107.414309.  
Surface Top Off Mix & Pump 16 SXS, 15.8 PPG, 1.15 Yield, 18.5 CUFT, 3.2 BBL Slurry, Class G Cement to Top Off Cellar. RD Pump Truck, make ready for Road.  
Road Pump Truck to Yard.

## Comments

Plug #1	Plug #1 (Revised) PC PERFS & Top 2078'-1978' Mix & Pump 12 SXS, 15.8 PPG, 1.15 Yield, 13.8 CUFT, 2.4 BBL Slurry, Class G Cement, DISP W/ 7.5 BBL H2O.
Plug #1A	Plug #1A Fruitland Top 1886'-1736' Mix & Pump 33 SXS W/ 2% CC, 15.8 PPG, 1.15 Yield, 37.9 CUFT, 6.7 BBL Slurry, Class G Cement, leaving 15 SXS Outside 5-1/2" CSG, 6 SXS in CSG below CR, 12 SXS in CSG above CR, DISP W/ 6 BBL H2O, Final S/O Pressure 750 PSI.
Plug #1B	(Kirtland and OJO Alamo) Mix and Pump 60 SXS 1.15 yield, 69 cuft, 2% calcium, 15.7# "G" cement. plug from 1725' to 1209'.
Plug #2	(Nacimiento) Mix and Pump 54 SXS, 1.15 yield, 62.1 cuft, 15.6# "G" cement with 31 sxs outside, 6 SXS Below CR, and 17 sxs above CR. From 742' to 546'.
Plug #3	Plug #3 Surface 148'-0' Mix & Pump 118 SXS, 15.8 PPG, 1.15 Yield, 135.7 CUFT, 24.1 BBL Slurry, Class G Cement, @ APPROX 84 SXS in CIRC was lost @ Pit through BH Valve, continue to Pump 34 SXS CIRC never returned.
Plug #3A	Plug #3A Surface Mix & Pump 100 SXS, 15.8 PPG, 1.15 Yield, 115 CUFT, 20.4 BBL Slurry, Class G Cement, DISP W/ 7 BBL H2O.
Plug #3B	Plug #3B Surface 148'-0' Mix & Pump 42 SXS, 15.8 PPG, 1.15 Yield, 48.3 CUFT, 8.6 BBL Slurry, Class G Cement, saw good Cement Returns from both CSG & BH Valves.
Top Off	Surface Top Off Mix & Pump 16 SXS, 15.8 PPG, 1.15 Yield, 18.5 CUFT, 3.2 BBL Slurry, Class G Cement to Top Off Cellar. RD Pump Truck, make ready for Road.

**On Site Reps:**

<b>Name</b>	<b>Association</b>	<b>Notes</b>
Casey Arnett	BLM	On Loc
Wanda Weatherford	BLM	On Loc
BW 101	Co. Rep.	On Loc
Juan Cardenas	Co. Rep.	On Loc
BW 101	Other	On Loc

API: 30-039-05554

Well Name: Canyon Largo Unit 20

### Plugged & Abandoned Notifications

Hilcorp Energy received verbal approval from Monica Kuehling (NMOCD) for the following notifications:

7/22/2020 (am)

1. RIH and set plug @ 2,078'.
2. RIH and dump 100 ft of cement on top of plug. Estimated TOC @ 1,978'.
  - a. Pressure test casing.
  - b. If pressure test fails, tag cement to confirm TOC. Report TOC prior to proceeding to next step. Actual TOC found to be at 1,992'.
3. POOH with tubing. RU wireline and RIH to perforate squeeze holes at 1,886'. POOH. Establish injection rate.
4. RIH and set cement retainer at 1,836'.
5. RU cement equipment and pump squeeze job. Pump 15 sks of cement. Estimated TOC on outside pipe is 1,786'. (Outside Cmt plug will be 1,886' – 1,786').
  - a. Pump 0% excess. After pumping cement proceed to Step 6.
  - b. If cement locks up during the job and we are unable to pump any more cement, stop cementing operations and proceed to Step 6.
6. Sting out of retainer. Pump (inside) cement on top of retainer at 1,836' up to 1,736'. WOC. Pressure test casing. If pressure test fails, tag TOC. Report TOC to Monica.
7. RU wireline and RIH to perforate squeeze holes at 1,685'. POOH. Establish injection rate.
  - a. If unable to establish injection, discuss plan forward with Monica.
8. Once injection rate has been established, set cement retainer at ~1,635'.
9. Sting out of retainer. Pump cement on top of retainer at ~1,635' up to 1,445'. WOC. Pressure test casing. If pressure test fails, tag TOC. Report TOC to Monica.
10. Proceed back to the original procedure. (Step 10)

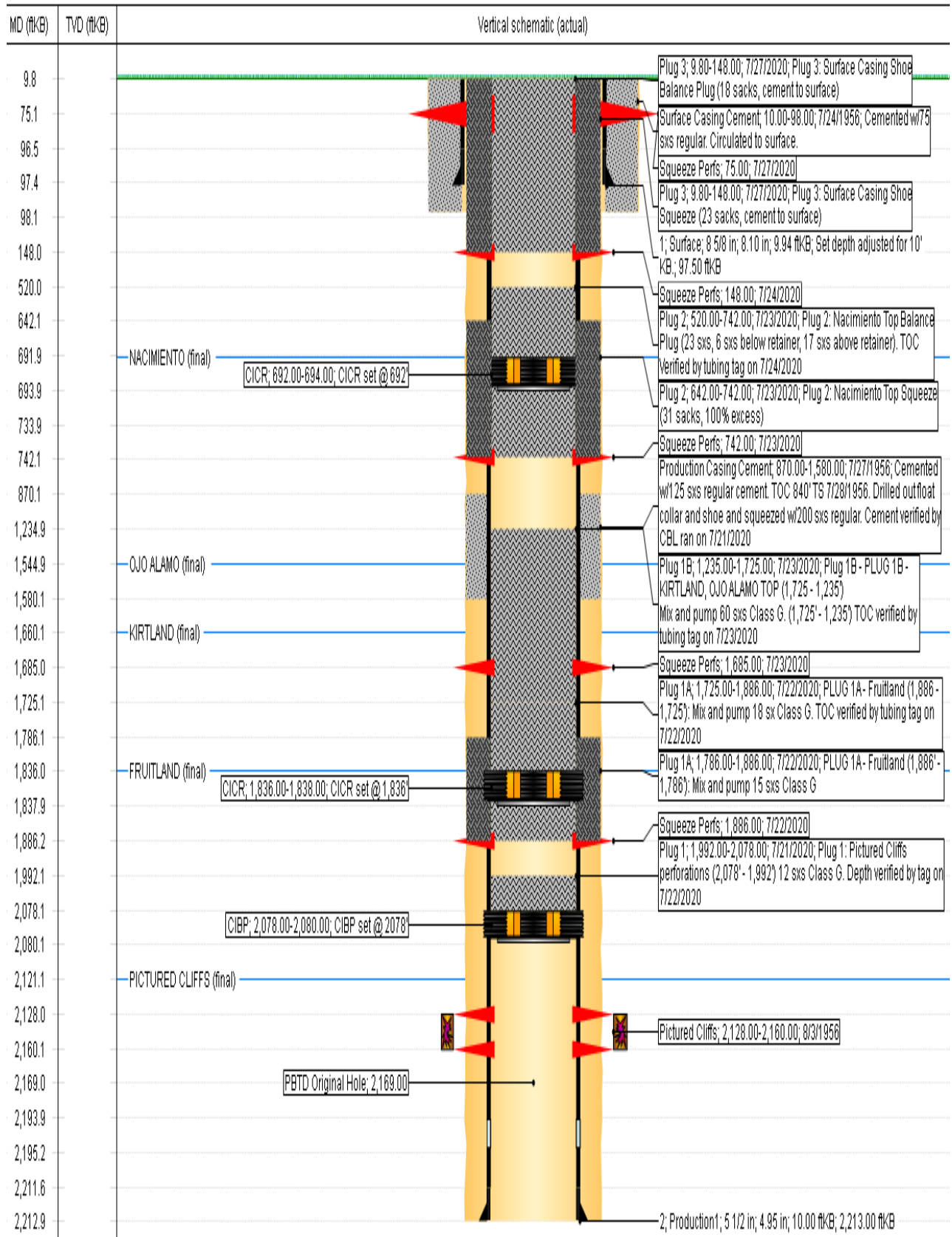
7/22/2020 (pm) - Performed the cement job on the Fruitland and got an injection rate of 1.5 BPM at 1,000 psi; everything went well. WOC and tagged TOC at 1,725'. Path forward is to pressure test in the morning and continue to the next step to squeeze the Kirtland and Ojo Alamo.

7/23/2020 – Unable to establish an injection rate. Path forward to spot balance plug from 1725' – 1445'. Tagged @ 1235'. Perf sqz hole @ 742' and set CR @ 692'

7/24/2020 – Tagged @ 520'. BH 0 psi. No fluids. Review CBL. Plan to Sqz Perf @ 75', establish circulation.

7/27/20 – Cement is at surface in both annulus and casing. Well is Plugged and Abandoned.

# Original Hole, 8/6/2020 8:37:26 AM





Hallcorp Energy Company  
CANYON Largo Unit #120