

District I
1625 N French Dr, Hobbs, NM 88240
District II
1301 W Grand Avenue, Artesia, NM 88210
District III
1000 Rio Brazos Road, Aztec, NM 87410
District IV
1220 S St Francis Dr, Santa Fe, NM 87505

State of New Mexico
Energy Minerals and Natural Resources
Department
Oil Conservation Division
1220 South St. Francis Dr.
Santa Fe, NM 87505

Form C-144
July 21, 2008

For temporary pits, closed-loop systems, and below-grade tanks, submit to the appropriate NMOCD District Office.
For permanent pits and exceptions submit to the Santa Fe Environmental Bureau office and provide a copy to the appropriate NMOCD District Office.

Pit, Closed-Loop System, Below-Grade Tank, or
Proposed Alternative Method Permit or Closure Plan Application

6777

- Type of action: Permit of a pit, closed-loop system, below-grade tank, or proposed alternative method
 Closure of a pit, closed-loop system, below-grade tank, or proposed alternative method
 Modification to an existing permit
 Closure plan only submitted for an existing permitted or non-permitted pit, closed-loop system, below-grade tank, or proposed alternative method

Instructions: Please submit one application (Form C-144) per individual pit, closed-loop system, below-grade tank or alternative request

Please be advised that approval of this request does not relieve the operator of liability should operations result in pollution of surface water, ground water or the environment. Nor does approval relieve the operator of its responsibility to comply with any other applicable governmental authority's rules, regulations or ordinances

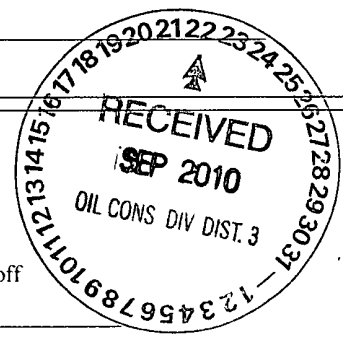
1
Operator: Williams Operating Co, LLC OGRID # 120782
Address: PO Box 640 / 721 S Main Aztec, NM 87410
Facility or well name Rosa Unit 183C
API Number: 30-03930764 OCD Permit Number: _____
U/L or Qtr/Qtr H Section 19 Township 31N Range 5W County: Rio Arriba
Center of Proposed Design Latitude 36 88613N Longitude -107 39580W NAD. 1927 1983
Surface Owner Federal State Private Tribal Trust or Indian Allotment

2
 Pit: Subsection F or G of 19.15.17.11 NMAC
Temporary Drilling Workover
 Permanent Emergency Cavitation P&A
 Lined Unlined Liner type Thickness 20 mil LLDPE HDPE PVC Other _____
 String-Reinforced
Liner Seams Welded Factory Other _____ Volume 20,000 bbl Dimensions L 140' x W 70' x D 12'

3
 Closed-loop System: Subsection H of 19 15 17 11 NMAC
Type of Operation P&A Drilling a new well Workover or Drilling (Applies to activities which require prior approval of a permit or notice of intent)
 Drying Pad Above Ground Steel Tanks Haul-off Bins Other _____
 Lined Unlined Liner type Thickness _____ mil LLDPE HDPE PVC Other _____
Liner Seams Welded Factory Other _____

4
 Below-grade tank: Subsection I of 19 15 17 11 NMAC
Volume _____ bbl Type of fluid: _____
Tank Construction material: _____
 Secondary containment with leak detection Visible sidewalls, liner, 6-inch lift and automatic overflow shut-off
 Visible sidewalls and liner Visible sidewalls only Other _____
Liner type Thickness _____ mil HDPE PVC Other _____

5
 Alternative Method:
Submittal of an exception request is required Exceptions must be submitted to the Santa Fe Environmental Bureau office for consideration of approval



62

6
Fencing: Subsection D of 19.15 17 11 NMAC (*Applies to permanent pits, temporary pits, and below-grade tanks*)
 Chain link, six feet in height, two strands of barbed wire at top (*Required if located within 1000 feet of a permanent residence, school, hospital, institution or church*)
 Four foot height, four strands of barbed wire evenly spaced between one and four feet
 Alternate Please specify As per BLM specifications

7.
Netting: Subsection E of 19 15 17 11 NMAC (*Applies to permanent pits and permanent open top tanks*)
 Screen Netting Other _____
 Monthly inspections (If netting or screening is not physically feasible)

8
Signs: Subsection C of 19 15 17 11 NMAC
 12"x 24", 2" lettering, providing Operator's name, site location, and emergency telephone numbers
 Signed in compliance with 19 15 3 103 NMAC

9
Administrative Approvals and Exceptions:
 Justifications and/or demonstrations of equivalency are required Please refer to 19 15 17 NMAC for guidance
Please check a box if one or more of the following is requested, if not leave blank:
 Administrative approval(s) Requests must be submitted to the appropriate division district or the Santa Fe Environmental Bureau office for consideration of approval.
 Exception(s) Requests must be submitted to the Santa Fe Environmental Bureau office for consideration of approval

10
Siting Criteria (regarding permitting): 19.15 17 10 NMAC
Instructions: The applicant must demonstrate compliance for each siting criteria below in the application. Recommendations of acceptable source material are provided below. Requests regarding changes to certain siting criteria may require administrative approval from the appropriate district office or may be considered an exception which must be submitted to the Santa Fe Environmental Bureau office for consideration of approval. Applicant must attach justification for request. Please refer to 19.15.17.10 NMAC for guidance. Siting criteria does not apply to drying pads or above-grade tanks associated with a closed-loop system.

Ground water is less than 50 feet below the bottom of the temporary pit, permanent pit, or below-grade tank - NM Office of the State Engineer - iWATERS database search, USGS, Data obtained from nearby wells	<input type="checkbox"/> Yes <input checked="" type="checkbox"/> No
Within 300 feet of a continuously flowing watercourse, or 200 feet of any other significant watercourse or lakebed, sinkhole, or playa lake (measured from the ordinary high-water mark) - Topographic map, Visual inspection (certification) of the proposed site	<input type="checkbox"/> Yes <input checked="" type="checkbox"/> No
Within 300 feet from a permanent residence, school, hospital, institution, or church in existence at the time of initial application (<i>Applies to temporary, emergency, or cavitation pits and below-grade tanks</i>) - Visual inspection (certification) of the proposed site, Aerial photo, Satellite image	<input type="checkbox"/> Yes <input checked="" type="checkbox"/> No <input type="checkbox"/> NA
Within 1000 feet from a permanent residence, school, hospital, institution, or church in existence at the time of initial application (<i>Applies to permanent pits</i>) - Visual inspection (certification) of the proposed site, Aerial photo, Satellite image	<input type="checkbox"/> Yes <input type="checkbox"/> No <input checked="" type="checkbox"/> NA
Within 500 horizontal feet of a private, domestic fresh water well or spring that less than five households use for domestic or stock watering purposes, or within 1000 horizontal feet of any other fresh water well or spring, in existence at the time of initial application - NM Office of the State Engineer - iWATERS database search, Visual inspection (certification) of the proposed site	<input type="checkbox"/> Yes <input checked="" type="checkbox"/> No
Within incorporated municipal boundaries or within a defined municipal fresh water well field covered under a municipal ordinance adopted pursuant to NMSA 1978, Section 3-27-3, as amended - Written confirmation or verification from the municipality, Written approval obtained from the municipality	<input type="checkbox"/> Yes <input checked="" type="checkbox"/> No
Within 500 feet of a wetland. - US Fish and Wildlife Wetland Identification map; Topographic map, Visual inspection (certification) of the proposed site	<input type="checkbox"/> Yes <input checked="" type="checkbox"/> No
Within the area overlying a subsurface mine - Written confirmation or verification or map from the NM EMNRD-Mining and Mineral Division	<input type="checkbox"/> Yes <input checked="" type="checkbox"/> No
Within an unstable area - Engineering measures incorporated into the design; NM Bureau of Geology & Mineral Resources, USGS; NM Geological Society, Topographic map	<input type="checkbox"/> Yes <input checked="" type="checkbox"/> No
Within a 100-year floodplain - FEMA map	<input type="checkbox"/> Yes <input checked="" type="checkbox"/> No

11
Temporary Pits, Emergency Pits, and Below-grade Tanks Permit Application Attachment Checklist: Subsection B of 19 15 17.9 NMAC
Instructions: Each of the following items must be attached to the application. Please indicate, by a check mark in the box, that the documents are attached.

Hydrogeologic Report (Below-grade Tanks) - based upon the requirements of Paragraph (4) of Subsection B of 19 15 17.9 NMAC
 Hydrogeologic Data (Temporary and Emergency Pits) - based upon the requirements of Paragraph (2) of Subsection B of 19 15 17.9 NMAC
 Siting Criteria Compliance Demonstrations - based upon the appropriate requirements of 19 15.17 10 NMAC
 Design Plan - based upon the appropriate requirements of 19 15 17 11 NMAC
 Operating and Maintenance Plan - based upon the appropriate requirements of 19 15.17.12 NMAC
 Closure Plan (Please complete Boxes 14 through 18, if applicable) - based upon the appropriate requirements of Subsection C of 19 15 17.9 NMAC and 19 15 17 13 NMAC

Previously Approved Design (attach copy of design) API Number: _____ or Permit Number _____

12.
Closed-loop Systems Permit Application Attachment Checklist: Subsection B of 19.15 17 9 NMAC
Instructions: Each of the following items must be attached to the application. Please indicate, by a check mark in the box, that the documents are attached.

Geologic and Hydrogeologic Data (only for on-site closure) - based upon the requirements of Paragraph (3) of Subsection B of 19 15 17 9
 Siting Criteria Compliance Demonstrations (only for on-site closure) - based upon the appropriate requirements of 19 15 17 10 NMAC
 Design Plan - based upon the appropriate requirements of 19 15 17 11 NMAC
 Operating and Maintenance Plan - based upon the appropriate requirements of 19 15.17 12 NMAC
 Closure Plan (Please complete Boxes 14 through 18, if applicable) - based upon the appropriate requirements of Subsection C of 19 15 17 9 NMAC and 19 15 17 13 NMAC

Previously Approved Design (attach copy of design) API Number. _____

Previously Approved Operating and Maintenance Plan API Number _____ (Applies only to closed-loop system that use above ground steel tanks or haul-off bins and propose to implement waste removal for closure)

13
Permanent Pits Permit Application Checklist: Subsection B of 19 15.17.9 NMAC
Instructions: Each of the following items must be attached to the application. Please indicate, by a check mark in the box, that the documents are attached.

Hydrogeologic Report - based upon the requirements of Paragraph (1) of Subsection B of 19 15 17.9 NMAC
 Siting Criteria Compliance Demonstrations - based upon the appropriate requirements of 19.15 17 10 NMAC
 Climatological Factors Assessment
 Certified Engineering Design Plans - based upon the appropriate requirements of 19 15 17 11 NMAC
 Dike Protection and Structural Integrity Design - based upon the appropriate requirements of 19 15 17.11 NMAC
 Leak Detection Design - based upon the appropriate requirements of 19 15 17 11 NMAC
 Liner Specifications and Compatibility Assessment - based upon the appropriate requirements of 19.15 17 11 NMAC
 Quality Control/Quality Assurance Construction and Installation Plan
 Operating and Maintenance Plan - based upon the appropriate requirements of 19 15 17 12 NMAC
 Freeboard and Overtopping Prevention Plan - based upon the appropriate requirements of 19 15 17 11 NMAC
 Nuisance or Hazardous Odors, including H₂S, Prevention Plan
 Emergency Response Plan
 Oil Field Waste Stream Characterization
 Monitoring and Inspection Plan
 Erosion Control Plan
 Closure Plan - based upon the appropriate requirements of Subsection C of 19 15 17.9 NMAC and 19 15 17 13 NMAC

14
Proposed Closure: 19 15 17 13 NMAC
Instructions: Please complete the applicable boxes, Boxes 14 through 18, in regards to the proposed closure plan.

Type Drilling Workover Emergency Cavitation P&A Permanent Pit Below-grade Tank Closed-loop System
 Alternative

Proposed Closure Method Waste Excavation and Removal
 Waste Removal (Closed-loop systems only)
 On-site Closure Method (Only for temporary pits and closed-loop systems)
 In-place Burial On-site Trench Burial
 Alternative Closure Method (Exceptions must be submitted to the Santa Fe Environmental Bureau for consideration)

15
Waste Excavation and Removal Closure Plan Checklist: (19.15 17 13 NMAC) *Instructions: Each of the following items must be attached to the closure plan. Please indicate, by a check mark in the box, that the documents are attached.*

Protocols and Procedures - based upon the appropriate requirements of 19.15.17 13 NMAC
 Confirmation Sampling Plan (if applicable) - based upon the appropriate requirements of Subsection F of 19 15 17 13 NMAC
 Disposal Facility Name and Permit Number (for liquids, drilling fluids and drill cuttings)
 Soil Backfill and Cover Design Specifications - based upon the appropriate requirements of Subsection H of 19 15 17 13 NMAC
 Re-vegetation Plan - based upon the appropriate requirements of Subsection I of 19 15 17 13 NMAC
 Site Reclamation Plan - based upon the appropriate requirements of Subsection G of 19 15 17 13 NMAC

16.

Waste Removal Closure For Closed-loop Systems That Utilize Above Ground Steel Tanks or Haul-off Bins Only: (19 15 17 13 D NMAC)

Instructions: Please indentify the facility or facilities for the disposal of liquids, drilling fluids and drill cuttings. Use attachment if more than two facilities are required.

Disposal Facility Name. _____ Disposal Facility Permit Number. _____

Disposal Facility Name. _____ Disposal Facility Permit Number. _____

Will any of the proposed closed-loop system operations and associated activities occur on or in areas that *will not* be used for future service and operations?
 Yes (If yes, please provide the information below) No

Required for impacted areas which will not be used for future service and operations

- Soil Backfill and Cover Design Specifications - based upon the appropriate requirements of Subsection H of 19.15 17.13 NMAC
- Re-vegetation Plan - based upon the appropriate requirements of Subsection I of 19.15 17.13 NMAC
- Site Reclamation Plan - based upon the appropriate requirements of Subsection G of 19.15 17 13 NMAC

17.

Siting Criteria (regarding on-site closure methods only): 19 15 17 10 NMAC

Instructions: Each siting criteria requires a demonstration of compliance in the closure plan. Recommendations of acceptable source material are provided below. Requests regarding changes to certain siting criteria may require administrative approval from the appropriate district office or may be considered an exception which must be submitted to the Santa Fe Environmental Bureau office for consideration of approval. Justifications and/or demonstrations of equivalency are required. Please refer to 19.15.17.10 NMAC for guidance.

- | | |
|---|--|
| Ground water is less than 50 feet below the bottom of the buried waste
- NM Office of the State Engineer - iWATERS database search, USGS; Data obtained from nearby wells | <input type="checkbox"/> Yes <input checked="" type="checkbox"/> No
<input type="checkbox"/> NA |
| Ground water is between 50 and 100 feet below the bottom of the buried waste
- NM Office of the State Engineer - iWATERS database search, USGS; Data obtained from nearby wells | <input checked="" type="checkbox"/> Yes <input type="checkbox"/> No
<input type="checkbox"/> NA |
| Ground water is more than 100 feet below the bottom of the buried waste
- NM Office of the State Engineer - iWATERS database search, USGS; Data obtained from nearby wells | <input type="checkbox"/> Yes <input checked="" type="checkbox"/> No
<input type="checkbox"/> NA |
| Within 300 feet of a continuously flowing watercourse, or 200 feet of any other significant watercourse or lakebed, sinkhole, or playa lake (measured from the ordinary high-water mark)
- Topographic map, Visual inspection (certification) of the proposed site | <input type="checkbox"/> Yes <input checked="" type="checkbox"/> No |
| Within 300 feet from a permanent residence, school, hospital, institution, or church in existence at the time of initial application
- Visual inspection (certification) of the proposed site, Aerial photo, Satellite image | <input type="checkbox"/> Yes <input checked="" type="checkbox"/> No |
| Within 500 horizontal feet of a private, domestic fresh water well or spring that less than five households use for domestic or stock watering purposes, or within 1000 horizontal feet of any other fresh water well or spring, in existence at the time of initial application.
- NM Office of the State Engineer - iWATERS database; Visual inspection (certification) of the proposed site | <input type="checkbox"/> Yes <input checked="" type="checkbox"/> No |
| Within incorporated municipal boundaries or within a defined municipal fresh water well field covered under a municipal ordinance adopted pursuant to NMSA 1978, Section 3-27-3, as amended.
- Written confirmation or verification from the municipality, Written approval obtained from the municipality | <input type="checkbox"/> Yes <input checked="" type="checkbox"/> No |
| Within 500 feet of a wetland
- US Fish and Wildlife Wetland Identification map, Topographic map, Visual inspection (certification) of the proposed site | <input type="checkbox"/> Yes <input checked="" type="checkbox"/> No |
| Within the area overlying a subsurface mine
- Written confirmation or verification or map from the NM EMNRD-Mining and Mineral Division | <input type="checkbox"/> Yes <input checked="" type="checkbox"/> No |
| Within an unstable area
- Engineering measures incorporated into the design, NM Bureau of Geology & Mineral Resources, USGS, NM Geological Society, Topographic map | <input type="checkbox"/> Yes <input checked="" type="checkbox"/> No |
| Within a 100-year floodplain
- FEMA map | <input type="checkbox"/> Yes <input checked="" type="checkbox"/> No |

18

On-Site Closure Plan Checklist: (19 15 17 13 NMAC) **Instructions:** Each of the following items must be attached to the closure plan. Please indicate, by a check mark in the box, that the documents are attached.

- Siting Criteria Compliance Demonstrations - based upon the appropriate requirements of 19 15 17 10 NMAC
- Proof of Surface Owner Notice - based upon the appropriate requirements of Subsection F of 19 15 17 13 NMAC
- Construction/Design Plan of Burial Trench (if applicable) based upon the appropriate requirements of 19.15 17 11 NMAC
- Construction/Design Plan of Temporary Pit (for in-place burial of a drying pad) - based upon the appropriate requirements of 19 15 17 11 NMAC
- Protocols and Procedures - based upon the appropriate requirements of 19 15 17.13 NMAC
- Confirmation Sampling Plan (if applicable) - based upon the appropriate requirements of Subsection F of 19 15 17 13 NMAC
- Waste Material Sampling Plan - based upon the appropriate requirements of Subsection F of 19 15 17 13 NMAC
- Disposal Facility Name and Permit Number (for liquids, drilling fluids and drill cuttings or in case on-site closure standards cannot be achieved)
- Soil Cover Design - based upon the appropriate requirements of Subsection H of 19 15 17 13 NMAC
- Re-vegetation Plan - based upon the appropriate requirements of Subsection I of 19 15 17 13 NMAC
- Site Reclamation Plan - based upon the appropriate requirements of Subsection G of 19 15 17 13 NMAC

19
Operator Application Certification:
 I hereby certify that the information submitted with this application is true, accurate and complete to the best of my knowledge and belief

Name (Print): _____ Title _____

Signature: _____ Date: _____

e-mail address _____ Telephone _____

20
OCD Approval: Permit Application (including closure plan) Closure Plan (only) OCD Conditions (see attachment)

OCD Representative Signature: Jonathan Kelley Approval Date: 9/01/2011

Title: Compliance Officer OCD Permit Number: _____

21
Closure Report (required within 60 days of closure completion): Subsection K of 19 15 17 13 NMAC
Instructions: Operators are required to obtain an approved closure plan prior to implementing any closure activities and submitting the closure report. The closure report is required to be submitted to the division within 60 days of the completion of the closure activities. Please do not complete this section of the form until an approved closure plan has been obtained and the closure activities have been completed.

Closure Completion Date: 6/23/2010

22
Closure Method:
 Waste Excavation and Removal On-Site Closure Method Alternative Closure Method Waste Removal (Closed-loop systems only)
 If different from approved plan, please explain

23
Closure Report Regarding Waste Removal Closure For Closed-loop Systems That Utilize Above Ground Steel Tanks or Haul-off Bins Only:
Instructions: Please identify the facility or facilities for where the liquids, drilling fluids and drill cuttings were disposed. Use attachment if more than two facilities were utilized.

Disposal Facility Name: _____ Disposal Facility Permit Number _____

Disposal Facility Name _____ Disposal Facility Permit Number _____

Were the closed-loop system operations and associated activities performed on or in areas that *will not* be used for future service and operations?
 Yes (If yes, please demonstrate compliance to the items below) No

Required for impacted areas which will not be used for future service and operations

Site Reclamation (Photo Documentation)
 Soil Backfilling and Cover Installation
 Re-vegetation Application Rates and Seeding Technique

24.
Closure Report Attachment Checklist: *Instructions: Each of the following items must be attached to the closure report. Please indicate, by a check mark in the box, that the documents are attached.*

Proof of Closure Notice (surface owner and division)
 Proof of Deed Notice (required for on-site closure)
 Plot Plan (for on-site closures and temporary pits)
 Confirmation Sampling Analytical Results (if applicable)
 Waste Material Sampling Analytical Results (required for on-site closure)
 Disposal Facility Name and Permit Number
 Soil Backfilling and Cover Installation
 Re-vegetation Application Rates and Seeding Technique
 Site Reclamation (Photo Documentation)

On-site Closure Location. Latitude 36.88613N Longitude -107 39580W NAD 1927 1983

25
Operator Closure Certification:
 I hereby certify that the information and attachments submitted with this closure report is true, accurate and complete to the best of my knowledge and belief I also certify that the closure complies with all applicable closure requirements and conditions specified in the approved closure plan

Name (Print): Michael K Lane Title: Sr. EH&S Specialist

Signature: [Signature] Date: 9/21/10

e-mail address: myke williams com Telephone 505-634-4219

Williams Production Co., LLC
San Juan Basin: New Mexico Assets
Temporary Pit In-place (50-100 ft to Groundwater) Closure Report
Drilling/Completion and Workover

Well: Rosa Unit #183C
API No: 30-039-30764
Location: H-S19T31N-R05W, NMPM

In accordance with Rule 19.15.17.13 NMAC, the following plan describes the general in-place closure requirements of temporary pits on Williams Production Co, LLC (WPX) locations in the San Juan Basin of New Mexico. This is WPX's standard procedure for all temporary pits to be utilized for the drilling, completion and/or workovers of oil and gas wells operated by WPX. For those temporary pits which do not conform to this standard closure plan, a separate well/pit specific closure plan will be developed and utilized.

All closure activities will include proper documentation and will be submitted to OCD within 60 days of the pit closure on a Closure Report using Division Form C-144. The Report will include the following:

- Details on Capping and Covering, where applicable
- Plot Plan (Pit Diagram)
- Inspection reports
- Sampling Results
- Division Form C-105 *WELL COMPLETION OR RECOMPLETION REPORT AND LOG*
- Copy of Deed Notice filed with the County Clerk (format to meet County requirements)
A deed notice is not required on state, federal or tribal land according to NMOCD FAQ dated October 30, 2008 and posted on the NMOCD website.

General Plan Requirements:

1. All free standing liquids will be removed from the pit at the start of the closure process. Liquids will be removed in a manner that the appropriate District Office approves including, recycled, reused, reclaimed, evaporated, and/or disposed of in a Division-approved facility. Once all free liquids are removed, the sludge will be stabilized by one of the following methods depending on equipment availability: blending with clean stockpiled soils or dewatering using a Bowl Decanter Centrifuge then blending with clean stockpiled soils.

To the extent practical, free liquids were pulled from the reserve pit following the completion rig off. Haul dates were from 11/22/2009 to (Rosa Unit SWD #001 (Order. SWD-916, API: 3003927055)

2. The preferred method of closure for all temporary pits will be on-site closure by in-place burial, provided all the criteria in 19.15.17.13 B are met.

On-site burial plan for this location was approved by the Aztec District Office on 8/13/2009.

3. The surface owner shall be notified of WPX's proposed closure plan using a means that provides proof of notice (i.e. certified mail/return receipt requested)
Williams notified the SMA of its intent to use a temporary pit and onsite burial in the Surface Use Plan in the well APD. The SMA was notified by email see attached. No return receipt required per BLM FFO/NMOCD MOU dated 5/4/09.

4. Within six months of the "rig-off" status occurring WPX will ensure that the temporary pit is covered, re-contoured and reseeding in progress.

Drill rig-off 9/3/2009 Request for transfer to completion rig submitted 11/2/2009 to OCD Aztec District Office and approved 11/30/2009 Completion rig-off 10/29/2009 Pit covered 6/23/2010 due to Pit area along with unused portions of well pad to be interim reclaimed in accordance with Surface Management Agency requirements in APD-COAs and per BLM.FFO/NMOCD MOU dated 5/4/09.

5. Notice of Closure will be given to the Aztec District office between 72 hours and one week of the scheduled closure via email or phone. The notification of closure will include the following:
 - a. Operators Name (WPX)
 - b. Well Name and API Number
 - c. Location (USTR)

The Aztec District Office of NMOCD was notified by email using a format acceptable to the District. Copies of the notification from Abode Contractors on 6/21/2010 is attached.

6. The pit liner shall be removed above "mud level" after stabilization. Removal of the liner will consist of manually or mechanically cutting the liner at the mud level and removing all remaining liner. Care will be taken to remove "all" of the liner (i.e. anchored material). All excessive liner will be disposed of at a licensed disposal facility (probably San Juan Regional Landfill operated by Waste Management under NMED Permit SWM-052426).

The liner to the temporary pit was removed above the "mud level" once stabilized. Removal of the liner consisted of manually cutting the liner and removing all remaining liner material above the "mud level" including the anchor material. All excessive liner was disposed of at the San Juan Regional Landfill operated by Waste Management under NMED Permit SWM-052426.

7. The shallow surface soils of the unlined flare/cavitation pit will be scrapped and placed in the lined pit. A five-point composite sample will be taken of the pit using sampling tools and all samples tested per 19 15.17.13(B)(1)(b) NMAC. In the event that the criteria are not met (See Table 1), a release will be reported to NMOCD in compliance with Rule 116 and additional soil removal will be done until closure criteria are met.

A five-point composite sampling was taken of the flare pit area using sampling tools and the sample was tested per 19 15.17.13(B)(1)(b) NMAC. Results are shown in Table 1 and lab reports are attached.

8. Solidification of the remaining pit contents shall be achieved by mixing non-waste containing, earthen material. The solidification process will be accomplished use a combination of natural drying and mechanical mixing. Pit contents will be mixed with non-waste, earthen material to a consistency that is deemed safe and stable. The mixing ratio shall not exceed 3 parts non-waste to 1 part pit contents.

Following removal of free liquids, the pit contents were mixed with non-waste containing, earthen material in order to achieve appropriate solidification and a consistency that was deemed safe and stable. The solidification process was accomplished using a combination of natural drying, a Bowl Decanter Centrifuge, and mechanically mixing using a dozer and track hoe. The mixing ration was approximately 2.5-3 parts native soil to 1 part pit contents. Solidification was completed 6/19/2010.

9. A five-point composite sample will be taken of the pit using sampling tools and all samples tested per 19 15.17 13(B)(1)(b) NMAC. In the event that the criteria are not met (See Table 1), all contents will be handled per 19 15.17 13(B)(1)(a) (i.e. dig and haul to a Division-approved facility). Approval to haul will be requested of the Aztec District office prior to initiation.

A five-point composite sampling was taken of the pit area using sampling tools and the sample was tested per 19 15 17 13(B)(1)(b) NMAC. Results are shown in Table 1 and lab reports are attached.

Table 1 Closure Criteria for Temporary Pits in Non-sensitive Areas with Groundwater Between 50-100 bgs.

Components	Testing Methods	Limits (mg/Kg)	Flare (mg/Kg)	Pit (mg/Kg)
Benzene	EPA SW-846 Method 8021B or 8260B	0.2	0.2	ND
BTEX	EPA SW-846 Method 8021B or 8260B	50	50	0.0044
TPH	EPA SW-846 Method 418.1	2500	2500	275
GRO/DRO	EPA SW-846 Method 8015M (GRO/DRO)	500	500	ND
Chlorides	EPA SW-846 Method 300.1	500	500	20

10. Upon completion of solidification and testing, the pit area will be backfilled with non-waste earthen material compacted to native conditions to enable effective re-vegetation for successful evapotranspiration. A minimum of four feet of cover including replacement of one foot of suitable material to establish vegetation, or the background thickness of topsoil, whichever is greater.

Upon completion of solidification and testing, the pit area was backfilled with non-waste earthen material compacted to native conditions. A minimum of four feet of cover to the extent practical was achieved and the cover included just over a foot of topsoil suitable to establish vegetation.

11. Following cover, the site will be re-contoured to meet the Surface Management Agency or surface owner requirements. Re-contouring will attempt to match fit, shape, line form, and texture of the surrounding geography. Re-shaping will include drainage control, prevent ponding, and minimize erosion. Natural drainages will be unimpeded and storm water Best Management Practices (BMPs) will be used to aid in soil stabilization and protection surface water quality.

- Following cover, Williams reestablished drainage and contours to approximately match previous topography meeting the Conditions of Approval in the APD and the direction offered by a BLM/USFS inspector. Cover and re-contouring were completed 6/23/2010.

12. Notification will be sent to the Aztec District office when the reclaimed area is seeded. Williams will comply with Surface Management Agency reseeding requirements in the COAs of the APD for the referenced well, per BLM:FFO/NMOCD MOU dated 5/4/09.

13. WPX shall seed the disturbed areas the first growing season after the pit is covered. Seeding will be accomplished via drilling on the contour whenever practical, or by other Division-approved methods. Vegetative cover will equal 70% of the native perennial vegetative cover (un-impacted) consisting of at least three native plant species, including at least one grass, but not including noxious weeds, and maintained that cover through two successive growing seasons. Repeat seeding or planting will be continued until successful vegetative growth occurs. *Note: WPX assumes the seeding stipulations including mix and seeding methods specified by the Surface Management Agency (BLM, BOR, USFS, Tribal, etc.) or Land owner as part of a surface use agreement or APD are Division-approved methods unless notified by the Division of their unacceptability.*

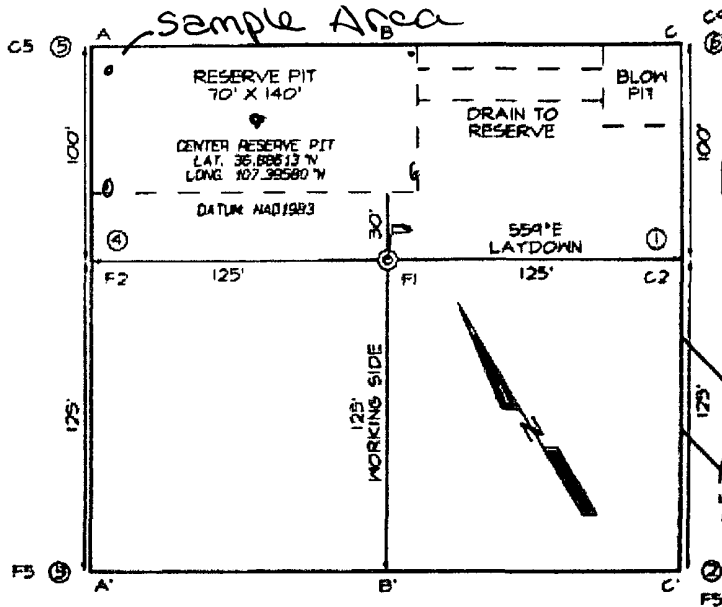
Williams will comply with Surface Management Agency reseeding requirements in the COAs of the APD for the referenced well, per BLM FFO/NMOCD MOU dated 5/4/09.

14. The temporary pit will be located with a steel marker, no less than four inches in diameter, cemented in a hole three feet deep in the center of the onsite burial upon the abandonment of all wells on the pad. The marker will be flush with the ground to allow access of the active well pad and for safety concerns. The marker will include a threaded collar to be used for future abandonment. The top of the marker will contain a welded steel 12" square plate that indicates the onsite burial of the temporary pit. The plate will be easily removable and a four-foot tall riser will be threaded into the top of the collar marker and welded around the base with the operations information at the time of all wells on the pad abandoned. The information will include Operator Name, Lease Name, Well Name, and number, USTR, and an indicator that the marker is an onsite pit burial location.

The temporary pit was located with a steel marker meeting the above listed specifications. The marker has the following information welded for future reference: Williams Production, NMSF-078768, S-H19TW31N-R05W-F, "Pit Burial" (photo attached). Steel marker set 7/12/2010.

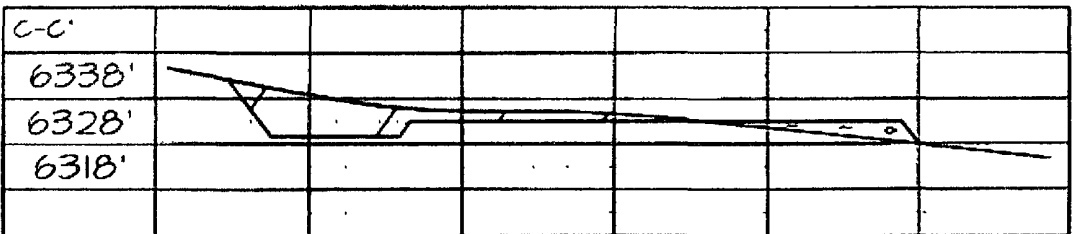
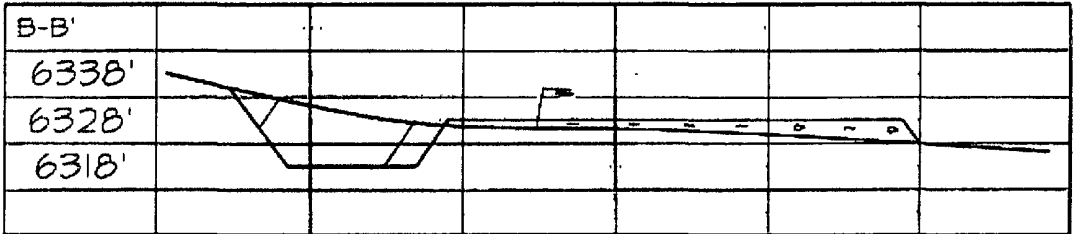
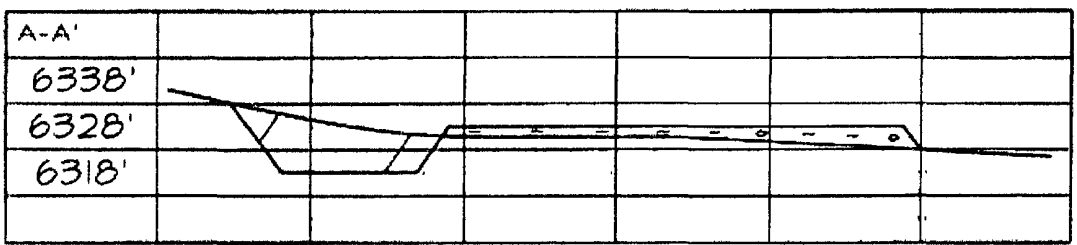
WILLIAMS PRODUCTION COMPANY ROSA UNIT #183C
2330' FNL & 305' FEL, SECTION 19, T31N, R5W, NMPM
RIO ARriba COUNTY, NEW MEXICO ELEVATION: 6327'

LATITUDE: 36.88590° N
LONGITUDE: 107.39575° W
 DATUM: NAD1983



1066.6' TOTAL ACCESS ROAD LENGTH
 402.6' GAME AND FISH DEPARTMENT
 514.0' BUREAU OF LAND MANAGEMENT

Steel T-Posts have been set to define the Edge of Disturbance limits which are 50' offset from the edge of the stained wellpad.





**EPA METHOD 8015 Modified
Nonhalogenated Volatile Organics
Total Petroleum Hydrocarbons**

Client:	WPX	Project #:	04108-0136
Sample ID:	Reserve Pit	Date Reported:	07-15-10
Laboratory Number:	55132	Date Sampled:	07-12-10
Chain of Custody No:	9938	Date Received:	07-13-10
Sample Matrix:	Soil	Date Extracted:	07-13-10
Preservative:	Cool	Date Analyzed:	07-14-10
Condition:	Intact	Analysis Requested:	8015 TPH

Parameter	Concentration (mg/Kg)	Det. Limit (mg/Kg)
Gasoline Range (C5 - C10)	ND	0.2
Diesel Range (C10 - C28)	ND	0.1
Total Petroleum Hydrocarbons	ND	0.2

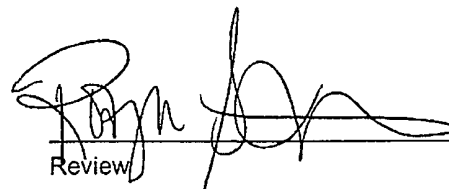
ND - Parameter not detected at the stated detection limit.

References: Method 8015B, Nonhalogenated Volatile Organics, Test Methods for Evaluating Solid Waste, SW-846, USEPA, December 1996.

Comments: **Rosa Unit #183 C**



Analyst



Review



**EPA Method 8015 Modified
Nonhalogenated Volatile Organics
Total Petroleum Hydrocarbons**

Quality Assurance Report

Client:	QA/QC	Project #:	N/A
Sample ID:	07-14-10 QA/QC	Date Reported:	07-14-10
Laboratory Number:	55132	Date Sampled:	N/A
Sample Matrix:	Methylene Chloride	Date Received:	N/A
Preservative:	N/A	Date Analyzed:	07-14-10
Condition:	N/A	Analysis Requested:	TPH

	I-Cal Date	I-Cal RF	C-Cal RF	% Difference	Accept. Range
Gasoline Range C5 - C10	05-07-07	9.9960E+002	1.0000E+003	0.04%	0 - 15%
Diesel Range C10 - C28	05-07-07	9.9960E+002	1.0000E+003	0.04%	0 - 15%

Blank Conc: (mg/L - mg/Kg)	Concentration	Detection Limit
Gasoline Range C5 - C10	ND	0.2
Diesel Range C10 - C28	ND	0.1
Total Petroleum Hydrocarbons	ND	0.2

Duplicate Conc: (mg/Kg)	Sample	Duplicate	% Difference	Accept. Range
Gasoline Range C5 - C10	ND	ND	0.0%	0 - 30%
Diesel Range C10 - C28	ND	ND	0.0%	0 - 30%

Spike Conc: (mg/Kg)	Sample	Spike Added	Spike Result	% Recovery	Accept. Range
Gasoline Range C5 - C10	ND	250	251	101%	75 - 125%
Diesel Range C10 - C28	ND	250	250	100%	75 - 125%

ND - Parameter not detected at the stated detection limit.

References: Method 8015B, Nonhalogenated Volatile Organics, Test Methods for Evaluating Solid Waste, SW-846, USEPA, December 1996.

Comments: QA/QC for Samples 55034-55038; 55132-55133 and 55136


Analyst


Review



**EPA METHOD 8021
AROMATIC VOLATILE ORGANICS**

Client:	WPX	Project #:	04108-0136
Sample ID:	Reserve Pit	Date Reported:	07-14-10
Laboratory Number:	55132	Date Sampled:	07-12-10
Chain of Custody:	9938	Date Received:	07-13-10
Sample Matrix:	Soil	Date Analyzed:	07-14-10
Preservative:	Cool	Date Extracted:	07-13-10
Condition:	Intact	Analysis Requested:	BTEX

Parameter	Concentration (ug/Kg)	Det. Limit (ug/Kg)
Benzene	ND	0.9
Toluene	ND	1.0
Ethylbenzene	ND	1.0
p,m-Xylene	ND	1.2
o-Xylene	4.4	0.9
Total BTEX	4.4	


ND - Parameter not detected at the stated detection limit

Surrogate Recoveries:	Parameter	Percent Recovery
	Fluorobenzene	100 %
	1,4-difluorobenzene	100 %
	Bromochlorobenzene	100 %

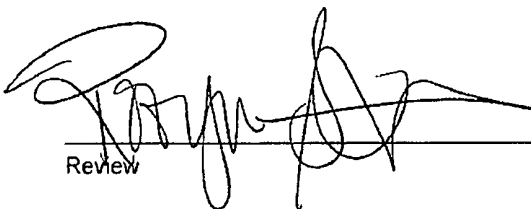
References: Method 5030B, Purge-and-Trap, Test Methods for Evaluating Solid Waste, SW-846, USEPA, December 1996.

Method 8021B, Aromatic Volatile Organics, Test Methods for Evaluating Solid Waste, SW-846, USEPA, December 1996

Comments: Rosa Unit #183 C



Analyst



Review



Client:	N/A	Project #:	N/A
Sample ID:	0714BBLK QA/QC	Date Reported:	07-14-10
Laboratory Number:	55136	Date Sampled:	N/A
Sample Matrix:	Soil	Date Received:	N/A
Preservative:	N/A	Date Analyzed:	07-14-10
Condition:	N/A	Analysis:	BTEX

Calibration and Detection Limits (ug/L)	I-Cal/RF	C-Cal/RF	%Diff	Blank Conc	Detect Limit
		Accept Range: 0 - 15%			
Benzene	7.8762E+005	7.8920E+005	0.2%	ND	0.1
Toluene	8.6277E+005	8.6450E+005	0.2%	ND	0.1
Ethylbenzene	7.8752E+005	7.8910E+005	0.2%	ND	0.1
p,m-Xylene	1.9616E+006	1.9655E+006	0.2%	ND	0.1
o-Xylene	6.8035E+005	6.8171E+005	0.2%	ND	0.1


Duplicate Conc: (ug/Kg)	Sample	Duplicate	%Diff	Accept Range	Detect Limit
Benzene	1.9	1.3	29.7%	0 - 30%	0.9
Toluene	4.0	3.9	2.5%	0 - 30%	1.0
Ethylbenzene	5.3	5.6	5.7%	0 - 30%	1.0
p,m-Xylene	ND	ND	0.0%	0 - 30%	1.2
o-Xylene	7.7	7.0	9.1%	0 - 30%	0.9

Spike Conc: (ug/Kg)	Sample	Amount Spiked	Spiked Sample	% Recovery	Accept Range
Benzene	1.9	50.0	50.6	101%	39 - 150
Toluene	4.0	50.0	50.4	100%	46 - 148
Ethylbenzene	5.3	50.0	49.7	98.4%	32 - 160
p,m-Xylene	ND	100	97.9	97.9%	46 - 148
o-Xylene	7.7	50.0	50.1	98.6%	46 - 148

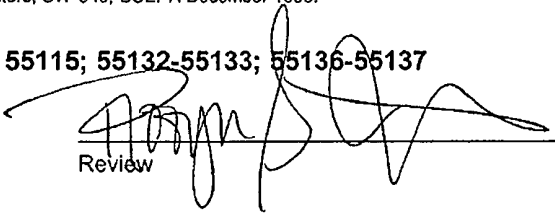
ND - Parameter not detected at the stated detection limit.

References: Method 5030B, Purge-and-Trap, Test Methods for Evaluating Solid Waste, SW-846, USEPA, December 1996.
Method 8021B, Aromatic and Halogenated Volatiles by Gas Chromatography Using Photoionization and/or Electrolytic Conductivity Detectors, SW-846, USEPA December 1996.

Comments: QA/QC for Samples 55034-55038; 55115; 55132-55133; 55136-55137



Analyst



Review



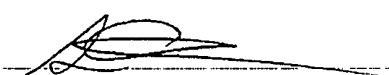
Client:	WPX	Project #:	04108-0136
Sample ID:	Reserve Pit	Date Reported:	07-15-10
Laboratory Number:	55132	Date Sampled:	07-12-10
Chain of Custody No:	9938	Date Received:	07-13-10
Sample Matrix:	Soil	Date Extracted:	07-13-10
Preservative:	Cool	Date Analyzed:	07-13-10
Condition:	Intact	Analysis Needed:	TPH-418.1

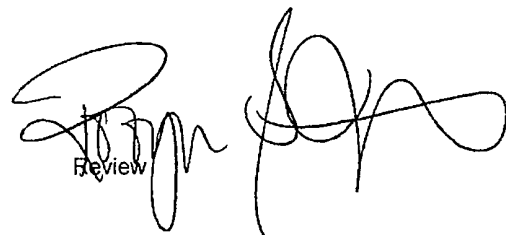
Parameter	Concentration (mg/kg)	Det. Limit (mg/kg)
Total Petroleum Hydrocarbons	275	12.4

ND = Parameter not detected at the stated detection limit.

References: Method 418.1, Petroleum Hydrocarbons, Total Recoverable, Chemical Analysis of Water and Waste, USEPA Storet No. 4551, 1978.

Comments: **Rosa Unit #183 C**


Analyst


Review

**EPA METHOD 418.1
TOTAL PETROLEUM
HYDROCARBONS
QUALITY ASSURANCE REPORT**

Client:	QA/QC	Project #:	N/A
Sample ID:	QA/QC	Date Reported:	07-13-10
Laboratory Number:	07-13-TPH.QA/QC 55104	Date Sampled:	N/A
Sample Matrix:	Freon-113	Date Analyzed:	07-13-10
Preservative:	N/A	Date Extracted:	07-13-10
Condition:	N/A	Analysis Needed:	TPH

Calibration	I-Cal Date	C-Cal Date	I-Cal RF:	C-Cal RF:	% Difference	Accept. Range
	06-30-10	07-13-10	1,716	1,770	3.1%	+/- 10%

Blank Conc. (mg/Kg)	Concentration	Detection Limit
TPH	ND	12.4

Duplicate Conc. (mg/Kg)	Sample	Duplicate	% Difference	Accept. Range
TPH	17.9	16.5	7.8%	+/- 30%

Spike Conc. (mg/Kg)	Sample	Spike Added	Spike Result	% Recovery	Accept Range
TPH	17.9	2,000	1,920	95.1%	80 - 120%

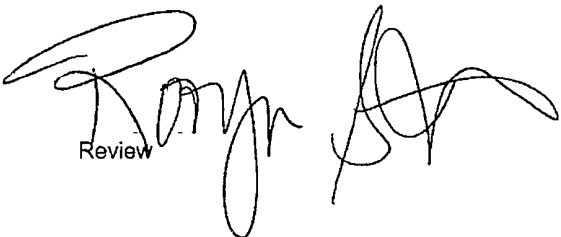
ND = Parameter not detected at the stated detection limit.

References: Method 418.1, Petroleum Hydrocarbons, Total Recoverable, Chemical Analysis of Water and Waste, USEPA Storet No. 4551, 1978.

Comments: QA/QC for Samples 55100-55104; 55090; 55132-55133



Analyst



Review




Chloride

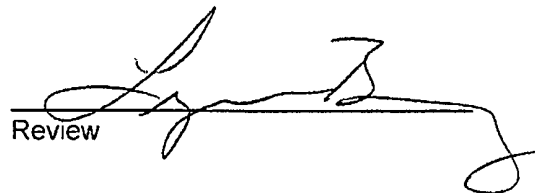
Client:	WPX	Project #:	04108-0136
Sample ID:	Reserve Pit	Date Reported:	07-15-10
Lab ID#:	55132	Date Sampled:	07-12-10
Sample Matrix:	Soil	Date Received:	07-13-10
Preservative:	Cool	Date Analyzed:	07-14-10
Condition:	Intact	Chain of Custody:	9938

Parameter	Concentration (mg/Kg)
Total Chloride	20

Reference: U.S.E.P.A., 4500B, "Methods for Chemical Analysis of Water and Wastes", 1983.
Standard Methods For The Examination of Water And Waste Water", 18th ed., 1992.

Comments: Rosa Unit #183 C


Analyst


Review

CHAIN OF CUSTODY RECORD

09938

Client: <i>wpx</i>	Project Name / Location: <i>Rosa unit # 183e</i>	ANALYSIS / PARAMETERS									
Client Address: <i>myke Lane</i>	Sampler Name: <i>Glen Shelby</i>	X	X	X	X	X	X	X	X	X	X
Client Phone No.:	Client No.:	X	X	X	X	X	X	X	X	X	X
		<i>04108 - 0136</i>		X	X	X	X	X	X	X	X

Sample No./ Identification	Sample Date	Sample Time	Lab No.	Sample Matrix	No./Volume of Containers	Preservative		TPH (Method 8015)	BTEX (Method 8021)	VOC (Method 8260)	PCRA 8 Metals	Cation / Anion	FCI	TCLP with H/P	PAH	TPH (418.1)	CHLORIDE			Sample Cool	Sample Intact	
						HgCl ₂	HCl															
<i>Reserve Pit</i>	<i>7-12-10</i>	<i>11:04 AM</i>	<i>55132</i>	<i>Soil Solid</i> <i>Sludge Aqueous</i>	<i>1</i>			<i>✓</i>	<i>✓</i>												<i>4</i>	<i>4</i>
				<i>Soil Solid</i> <i>Sludge Aqueous</i>																		
				<i>Soil Solid</i> <i>Sludge Aqueous</i>																		
				<i>Soil Solid</i> <i>Sludge Aqueous</i>																		
				<i>Soil Solid</i> <i>Sludge Aqueous</i>																		
				<i>Soil Solid</i> <i>Sludge Aqueous</i>																		
				<i>Soil Solid</i> <i>Sludge Aqueous</i>																		
				<i>Soil Solid</i> <i>Sludge Aqueous</i>																		
				<i>Soil Solid</i> <i>Sludge Aqueous</i>																		
				<i>Soil Solid</i> <i>Sludge Aqueous</i>																		
				<i>Soil Solid</i> <i>Sludge Aqueous</i>																		

Relinquished by: (Signature) <i>[Signature]</i>	Date <i>7-13-10</i>	Time <i>10:13 AM</i>	Received by: (Signature) <i>[Signature]</i>	Date <i>7/13/10</i>	Time <i>10:13</i>
Relinquished by: (Signature)			Received by: (Signature)		
Relinquished by: (Signature)			Received by: (Signature)		



5796 US Highway 64 • Farmington, NM 87401 • 505-632-0615 • lab@envirotech-inc.com

Meador, Tasha

From: Glenn Shelby [glenn@adobecontractorsinc.com]

Sent: Monday, June 21, 2010 8:00 AM

To: Brandon Powell

Cc: Johnny Stinson; Meador, Tasha; Lane, Myke

Subject: Williams cleanups, Rosa Unit 183C

On June 23rd we will start backfilling the reserve pit on the Rosa Unit 183C. Call me if you have any questions.

Thanks,

Glenn Shelby

Field Foreman

Adobe Contractors, Inc.

Cell: 320-7187

glenn@adobecontractorsinc.com

Meador, Tasha

From: Glenn Shelby [glenn@adobecontractorsinc.com]
Sent: Monday, June 21, 2010 7:58 AM
To: Sherrie Landon; Randy Mckee; Bob Switzer; Bill Liess; Mark Kelly
Cc: Johnny Stinson; Meador, Tasha; Lane, Myke
Subject: Williams cleanups, Rosa Unit 183C

On June 23rd we will start backfilling the reserve pit on the Rosa Unit 183C. Call me if you have any questions.

Thanks,

Glenn Shelby

Field Foreman

Adobe Contractors, Inc.

Cell: 320-7187

glenn@adobecontractorsinc.com

UNITED STATES
DEPARTMENT OF THE INTERIOR
BUREAU OF LAND MANAGEMENT

SUBMIT IN
DUPLICATE

(See other instructions on
reverse side)

FORM APPROVED
OMB NO 1004-0137
Expires February 28, 1995

5 LEASE DESIGNATION AND LEASE NO
NMSF-078764
6 IF INDIAN, ALLOTTEE OR

WELL COMPLETION OR RECOMPLETION REPORT AND LOG*

1a TYPE OF WELL OIL WELL GAS WELL DRY OTHER

b TYPE OF COMPLETION
 NEW WELL WORKOVER DEEPEN PLUG BACK DIFF RESVR OTHER

7 UNIT AGREEMENT NAME
Rosa Unit

2 NAME OF OPERATOR
WILLIAMS PRODUCTION COMPANY

8 FARM OR LEASE NAME, WELL NO
Rosa Unit #183C

3 ADDRESS AND TELEPHONE NO
P O Box 640, Aztec, NM 87410 (505) 634-4208

9 API WELL NO
30-039-30764

4 LOCATION OF WELL (Report location clearly and in accordance with any State requirements)*
At Surface 2330' FNL & 305' FEL, sec 19, T31N, R5W
At top production interval reported below Same
At total depth Same

10 FIELD AND POOL, OR WILDCAT
Blanco Mesaverde

11 SEC, T, R, M, OR BLOCK AND
SURVEY OR AREA
Sec 19, T31N, R5W

15 DATE SPUDDED
8-24-09

16 DATE T D REACHED
9-2-09

17 DATE COMPLETED (READY TO PRODUCE)
10-29-09

14 PERMIT NO

DATE ISSUED

18 ELEVATIONS (DK, RKB, RT, GR, ETC)*
6327' GR

12 COUNTY OR SURVEY OR AREA
Rio Arriba

13 STATE
New Mexico

19 ELEVATION CASINGHEAD

20 TOTAL DEPTH, MD & TVD
8010'

21 PLUG, BACK T D, MD & TVD
8007' MD

22 IF MULTICOMP, HOW MANY
3*

23 INTERVALS DRILLED BY

ROTARY TOOLS
x

CABLE TOOLS

24 PRODUCING INTERVAL(S), OF THIS COMPLETION - TOP, BOTTOM, NAME (MD AND TVD)*
BLANCO MESAVERDE 5396'-5908' MD

25 WAS DIRECTIONAL SURVEY MADE
No

26 TYPE ELECTRIC AND OTHER LOGS RUN
Aray Induction, Compensated GR-Density-Neutron, Temperature, Ultra Sonic Gas Detector and CBL

27 WAS WELL CORED
No

28 CASING REPORT (Report all strings set in well)

CASING SIZE/GRADE	WEIGHT, LB /FT	DEPTH SET (MD)	HOLE SIZE	TOP OF CEMENT, CEMENTING RECORD	AMOUNT PULLED
10-3/4", J-55	40 5#	355'	14-3/4"	290 SX - SURFACE	
7-5/8", J-55	26 4#	3681'	9-7/8"	570 SX - SURFACE	
4-1/2", N-80	11 6#	8007'	6-3/4"	580 SX - 3085' (CBL)	

29 LINER RECORD

SIZE	TOP (MD)	BOTTOM (MD)	SACKS CEMENT*	SCREEN (MD)	SIZE	DEPTH SET (MD)	PACKER SET (MD)
					2 3/7", 4 7#, J-55, EUE 8rd	7980'	none

31 PERFORATION RECORD (Interval, size, and number)

Upper MV Total of 49, 0 34" holes

Lower MV Total of 62, 0 34" holes

32 ACID, SHOT, FRACTURE, CEMENT SQUEEZE, ETC	DEPTH INTERVAL (MD)	AMOUNT AND KIND OF MATERIAL USED
	5396'-5610'	Fraced with 79,672# 20/40 mesh BASF
	5647'-5908'	Fraced with 82,526# 20/40 mesh BASF

33 PRODUCTION **NOTE:** commingled with Mesaverde and Dakota per AZT 3248

DATE OF FIRST PRODUCTION		PRODUCTION METHOD (Flowing, gas lift, pumping-size and type of pump)				WELL STATUS (PRODUCING OR SI)	
		Flowing				SI - waiting on the in	
DATE OF TEST	TESTED	CHOKE SIZE	PROD'N FOR TEST PERIOD	OIL - BBL	GAS - MCF	WATER - BBL	GAS-OIL RATIO
10-28	2 hr	1/2"					
FLOW TBG PRESS	CASING PRESSURE	CALCULATED 24-HOUR RATE		OIL - BBL	GAS - MCF	WATER - BBL	OIL GRAVITY-API (CORR)
0	450 lb				1051 mcf/d		

34 DISPOSITION OF GAS (Sold, used for fuel, vented, etc) TO BE SOLD

TEST WITNESSED BY Weldon Huggins

35 LIST OF ATTACHMENTS SUMMARY OF POROUS ZONES, WELLBORE DIAGRAM

36 I hereby certify that the foregoing and attached information is complete and correct as determined from all available records

SIGNED _____ TITLE Drilling COM

DATE 10-30-09

Larry Higgins

UNITED STATES
DEPARTMENT OF THE INTERIOR
BUREAU OF LAND MANAGEMENT

SUBMIT IN
DUPLICATE

(See other instructions on
reverse side)

FORM APPROVED
OMB NO 1004-0137
Expires February 28, 1995

5 LEASE DESIGNATION AND LEASE NO
NMSF-078764

6 IF INDIAN, ALLOTTEE OR

WELL COMPLETION OR RECOMPLETION REPORT AND LOG*

1a TYPE OF WELL OIL WELL GAS WELL DRY OTHER

b TYPE OF COMPLETION
 NEW WELL WORKOVER DEEPEN PLUG BACK DIFF RESVR OTHER

2 NAME OF OPERATOR
WILLIAMS PRODUCTION COMPANY

3 ADDRESS AND TELEPHONE NO
P O Box 640, Aztec, NM 87410 (505) 634-4208

4 LOCATION OF WELL (Report location clearly and in accordance with any State requirements)*
At Surface 2330' FNL & 305' FEL, sec 19, T31N, R5W
At top production interval reported below Same
At total depth Same

7 UNIT AGREEMENT NAME
Rosa Unit

8 FARM OR LEASE NAME, WELL NO
Rosa Unit #183C

9 API WELL NO
30-039-30764

10 FIELD AND POOL, OR WILDCAT
Basin Mancos

11 SEC, T, R, M, OR BLOCK AND
SURVEY OR AREA
Sec 19, T31N, R5W

14 PERMIT NO DATE ISSUED 12 COUNTY OR 13 STATE
Rio Arriba New Mexico

15 DATE SPUDDED 8-24-09 16 DATE TD REACHED 9-2-09 17 DATE COMPLETED (READY TO PRODUCE) 10-29-09

18 ELEVATIONS (DK, RKB, RT, GR, ETC)*
6327' GR

19 ELEVATION CASINGHEAD

20 TOTAL DEPTH, MD & TVD 8010' 21 PLUG, BACK TD, MD & TVD 8007' MD

22 IF MULTICOMP, HOW MANY 3* 23 INTERVALS DRILLED BY

ROTARY TOOLS x CABLE TOOLS

24 PRODUCING INTERVAL(S), OF THIS COMPLETION - TOP, BOTTOM, NAME (MD AND TVD)*
BASIN MANCOS 6864'-7260' MD

25 WAS DIRECTIONAL SURVEY MADE
No

26 TYPE ELECTRIC AND OTHER LOGS RUN
Aray Induction, Compensated GR-Density-Neutron, Temperature, Ultra Sonic Gas Detector and CBL

27 WAS WELL CORED
No

28 CASING REPORT (Report all strings set in well)

CASING SIZE/GRADE	WEIGHT, LB/FT	DEPTH SET (MD)	HOLE SIZE	TOP OF CEMENT, CEMENTING RECORD	AMOUNT PULLED
10-3/4", J-55	40 5#	355'	14-3/4"	290 SX - SURFACE	
7-5/8", J-55	26 4#	3681'	9-7/8"	570 SX - SURFACE	
4-1/2", N-80	11 6#	8007'	6-3/4"	580 SX - 3085' (CBL)	

29 LINER RECORD

SIZE	TOP (MD)	BOTTOM (MD)	SACKS CEMENT*	SCREEN (MD)	30 TUBING RECORD SIZE	DEPTH SET (MD)	PACKER SET (MD)
					2 3/5", 4 7#, J-55, EUE 8rd	7980'	none

31 PERFORATION RECORD (Interval, size, and number)

32 ACID, SHOT, FRACTURE, CEMENT SQUEEZE, ETC	DEPTH INTERVAL (MD)	AMOUNT AND KIND OF MATERIAL USED
<u>Upper MC</u> Total of 60, 0 34" holes	6864'-7054'	Fraced with 5029# 100 mesh BASF followed with 99,520# 40/70 mesh BASF
<u>Lower MC</u> Total of 63, 0 34" holes	7097'-7260'	Fraced with 5048# 100 mesh BASF followed with 96,357# 40/70 mesh BASF

33 PRODUCTION NOTE: commingled with Mesaverde and Dakota per AZT 3248

DATE OF FIRST PRODUCTION		PRODUCTION METHOD (Flowing, gas lift, pumping-size and type of pump)				WELL STATUS (PRODUCING OR SI)	
		Flowing				SI - waiting on tie-in	
DATE OF TEST	TESTED	CHOKE SIZE	PROD'N FOR TEST PERIOD	OIL - BBL	GAS - MCF	WATER - BBL	GAS-OIL RATIO
10-28	2 hr	1/2"					
FLOW TBG PRESS	CASING PRESSURE	CALCULATED 24-HOUR RATE		OIL - BBL	GAS - MCF	WATER - BBL	OIL GRAVITY-API (CORR)
0	450 lb				997 mcf/d		

34 DISPOSITION OF GAS (Sold, used for fuel, vented, etc) TO BE SOLD

TEST WITNESSED BY Weldon Higgins

35 LIST OF ATTACHMENTS SUMMARY OF POROUS ZONES, WELLBORE DIAGRAM

36 I hereby certify that the foregoing and attached information is complete and correct as determined from all available records

SIGNED _____ TITLE Drilling COM DATE 10-30-09

Larry Higgins

UNITED STATES
DEPARTMENT OF THE INTERIOR
BUREAU OF LAND MANAGEMENT

SUBMIT IN
DUPLICATE

(See other instructions on
reverse side)

FORM APPROVED
OMB NO 1004-0137
Expires February 28, 1995

5 LEASE DESIGNATION AND LEASE NO
NMSF-078764

6 IF INDIAN, ALLOTTEE OR

WELL COMPLETION OR RECOMPLETION REPORT AND LOG*

1a TYPE OF WELL OIL WELL GAS WELL DRY OTHER

b TYPE OF COMPLETION
 NEW WELL WORKOVER DEEPEN PLUG BACK DIFF RESVR OTHER

2 NAME OF OPERATOR
WILLIAMS PRODUCTION COMPANY

3 ADDRESS AND TELEPHONE NO
P O Box 640, Aztec, NM 87410 (505) 634-4208

4 LOCATION OF WELL (Report location clearly and in accordance with any State requirements)*
At Surface 2330' FNL & 305' FEL, sec 19, T31N, R5W
At top production interval reported below Same
At total depth Same

7 UNIT AGREEMENT NAME
Rosa Unit

8 FARM OR LEASE NAME, WELL NO
Rosa Unit #183C

9 API WELL NO
30-039-30764

10 FIELD AND POOL, OR WILDCAT
Basin Dakota

11 SEC, T, R, M, OR BLOCK AND
SURVEY OR AREA
Sec 19, T31N, R5W

14 PERMIT NO DATE ISSUED
12 COUNTY OR 13 STATE
Rio Arriba New Mexico

15 DATE SPUDDED 8-24-09 16 DATE T D REACHED 9-2-09 17 DATE COMPLETED (READY TO PRODUCE) 10-29-09 18 ELEVATIONS (DK, RKB, RT, GR, ETC)* 6327' GR 19 ELEVATION CASINGHEAD

20 TOTAL DEPTH, MD & TVD 8010' 21 PLUG, BACK T D, MD & TVD 8007' MD 22 IF MULTICOMP, HOW MANY 3* 23 INTERVALS DRILLED BY 24 PRODUCING INTERVAL(S), OF THIS COMPLETION - TOP, BOTTOM, NAME (MD AND TVD)* 25 WAS DIRECTIONAL SURVEY MADE

BASIN DAKOTA 7880'-8002' MD No

26 TYPE ELECTRIC AND OTHER LOGS RUN Aray Induction, Compensated GR-Density-Neutron, Temperature, Ultra Sonic Gas Detector and CBL 27 WAS WELL CORED No

28 CASING REPORT (Report all strings set in well)

CASING SIZE/GRADE	WEIGHT, LB/FT	DEPTH SET (MD)	HOLE SIZE	TOP OF CEMENT, CEMENTING RECORD	AMOUNT PULLED
10-3/4", J-55	40 5#	355'	14-3/4"	290 SX - SURFACE	
7-5/8", J-55	26 4#	3681'	9-7/8"	570 SX - SURFACE	
4-1/2", N-80	11 6#	8007'	6-3/4"	580 SX - 3085' (CBL)	

29 LINER RECORD

SIZE	TOP (MD)	BOTTOM (MD)	SACKS CEMENT*	SCREEN (MD)	30 TUBING RECORD SIZE	DEPTH SET (MD)	PACKER SET (MD)
					2 375", 4 7#, J-55, EUE 8rd	7980'	none

31 PERFORATION RECORD (Interval, size, and number)

Dakota Total of 66, 0 34" holes

32 ACID, SHOT, FRACTURE, CEMENT SQUEEZE, ETC

DEPTH INTERVAL (MD)	AMOUNT AND KIND OF MATERIAL USED
7880' - 8002'	Fraced with 5003# 100 mesh BASF followed with 118,675# 40/70 mesh BASF

33 PRODUCTION NOTE: commingled with Mesaverde and Mancos per AZT 3248

DATE OF FIRST PRODUCTION		PRODUCTION METHOD (Flowing, gas lift, pumping-size and type of pump)				WELL STATUS (PRODUCING OR SI)	
		Flowing				SI - waiting on tie-in	
DATE OF TEST	TESTED	CHOKE SIZE	PROD'N FOR TEST PERIOD	OIL - BBL	GAS - MCF	WATER - BBL	GAS-OIL RATIO
10-28	2 hr	1/2"					
FLOW TBG PRESS	CASING PRESSURE	CALCULATED 24-HOUR RATE		OIL - BBL	GAS - MCF	WATER - BBL	OIL GRAVITY-API (CORR)
0	450 lb				647 mcf/d		

34 DISPOSITION OF GAS (Sold, used for fuel, vented, etc) TO BE SOLD

TEST WITNESSED BY Weldon Higgins

35 LIST OF ATTACHMENTS SUMMARY OF POROUS ZONES, WELLBORE DIAGRAM

36 I hereby certify that the foregoing and attached information is complete and correct as determined from all available records

SIGNED _____ TITLE Drilling COM DATE 10-30-09

Larry Higgins

Exploration & Production
 San Juan Basin Operations
 720 So. Main / PO Box 640
 Aztec, NM 87410
 505-634-4200 / 505-634-4205 fax



Temporary Pit Inspection

FACILITY INFORMATION

Facility Name: Rosa Unit #183C	API #: 30 - 039 -
---------------------------------------	--------------------------

Pit Type: Drilling Workover X Completion	Inspection: Daily (Rig) Weekly (Tech)
---	---

	X Yes	No	If No, Report to EH&S immediately	Date Reported:	Time
Pit Liner intact (no visible tears)	X				
Pit Properly Fenced (no fence on rig side if on site)	X		Not Required (if site fully fenced)		
Pit Slopes intact	X				
Adequate freeboard (liquid level 2 vertical feet from berm top)	X		Not Applicable		
Free oil or sheen present on pit		X			
Flare Pit free of liquids	X		Not Applicable		
Comments:					
Inspector Signature:					
Printed Name: Weldon Higgins					
Title: rig consultant					
Date: 10/29/09 Phone: 505-320-4871					

Record Retention: Submit with Closure
 File: EH&S Well Files

Exploration & Production
 San Juan Basin Operations
 720 So. Main / PO Box 640
 Aztec, NM 87410
 505-634-4200 / 505-634-4205 fax



Temporary Pit Inspection

FACILITY INFORMATION

Facility Name: Rosa Unit #183C	API #: 30 - 039 -
---------------------------------------	--------------------------

Pit Type: Drilling Workover X Completion	Inspection: Daily (Rig) Weekly (Tech)
---	---

	X Yes	No	If No, Report to EH&S immediately	Date Reported:	Time
Pit Liner intact (no visible tears)	X				
Pit Properly Fenced (no fence on rig side if on site)	X		Not Required (if site fully fenced)		
Pit Slopes intact	X				
Adequate freeboard (liquid level 2 <u>vertical</u> feet from berm top)	X		Not Applicable		
Free oil or sheen present on pit		X			
Flare Pit free of liquids	X		Not Applicable		
Comments:					
Inspector Signature:					
Printed Name: Weldon Higgins					
Title: rig consultant					
Date: 10/28/09 Phone: 505-320-4871					

Record Retention: Submit with Closure
 File: EH&S Well Files

Exploration & Production
 San Juan Basin Operations
 720 So. Main / PO Box 640
 Aztec, NM 87410
 505-634-4200 / 505-634-4205 fax



Temporary Pit Inspection

FACILITY INFORMATION

Facility Name: Rosa Unit #183C	API #: 30 - 039 -
---------------------------------------	--------------------------

Pit Type: Drilling Workover X Completion	Inspection: Daily (Rig) Weekly (Tech)
---	---

	X Yes	No	If No, Report to EH&S immediately	Date Reported:	Time
Pit Liner intact (no visible tears)	X				
Pit Properly Fenced (no fence on rig side if on site)	X		Not Required (if site fully fenced)		
Pit Slopes intact	X				
Adequate freeboard (liquid level 2 vertical feet from berm top)	X		Not Applicable		
Free oil or sheen present on pit		X			
Flare Pit free of liquids	X		Not Applicable		

Comments:

Inspector Signature:

Printed Name: Weldon Higgins

Title: rig consultant

Date: 10/27/09 Phone: 505-320-4871

Record Retention: Submit with Closure.
 File: EH&S Well Files

Exploration & Production
 San Juan Basin Operations
 720 So. Main / PO Box 640
 Aztec, NM 87410
 505-634-4200 / 505-634-4205 fax



Temporary Pit Inspection

FACILITY INFORMATION

Facility Name: Rosa Unit #183C	API #: 30 - 039 -
---------------------------------------	--------------------------

Pit Type: Drilling Workover <input checked="" type="checkbox"/> Completion	Inspection: Daily (Rig) Weekly (Tech)
--	---

	X Yes	No	If No, Report to EH&S immediately	Date Reported:	Time
Pit Liner intact (no visible tears)	<input checked="" type="checkbox"/>				
Pit Properly Fenced (no fence on rig side if on site)	<input checked="" type="checkbox"/>		Not Required (if site fully fenced)		
Pit Slopes intact	<input checked="" type="checkbox"/>				
Adequate freeboard (liquid level 2 vertical feet from berm top)	<input checked="" type="checkbox"/>		Not Applicable		
Free oil or sheen present on pit		<input checked="" type="checkbox"/>			
Flare Pit free of liquids	<input checked="" type="checkbox"/>		Not Applicable		

Comments:

Inspector Signature:

Printed Name: Weldon Higgins

Title: rig consultant

Date: 10/25/09 Phone: 505-320-4871

Record Retention: Submit with Closure
 File: EH&S Well Files

Exploration & Production
 San Juan Basin Operations
 720 So. Main / PO Box 640
 Aztec, NM 87410
 505-634-4200 / 505-634-4205 fax



Temporary Pit Inspection

FACILITY INFORMATION

Facility Name: Rosa Unit #183C	API #: 30 - 039 -
---------------------------------------	--------------------------

Pit Type: Drilling Workover X Completion	Inspection: Daily (Rig) Weekly (Tech)
---	---

	X Yes	No	If No, Report to EH&S immediately	Date Reported:	Time
Pit Liner intact (no visible tears)	X				
Pit Properly Fenced (no fence on rig side if on site)	X		Not Required (if site fully fenced)		
Pit Slopes intact	X				
Adequate freeboard (liquid level 2 vertical feet from berm top)	X		Not Applicable		
Free oil or sheen present on pit		X			
Flare Pit free of liquids	X		Not Applicable		
Comments:					
Inspector Signature:					
Printed Name: Weldon Higgins					
Title: rig consultant					
Date: 10/24/09 Phone: 505-320-4871					

Record Retention: Submit with Closure
 File: EH&S Well Files

Exploration & Production
 San Juan Basin Operations
 720 So. Main / PO Box 640
 Aztec, NM 87410
 505-634-4200 / 505-634-4205 fax



Temporary Pit Inspection

FACILITY INFORMATION

Facility Name: Rosa Unit #183C	API #: 30 - 039 -
---------------------------------------	--------------------------

Pit Type: Drilling Workover X Completion	Inspection: Daily (Rig) Weekly (Tech)
---	---

	X Yes	No	If No, Report to EH&S immediately	Date Reported:	Time
Pit Liner intact (no visible tears)	X				
Pit Properly Fenced (no fence on rig side if on site)	X		Not Required (if site fully fenced)		
Pit Slopes intact	X				
Adequate freeboard (liquid level 2 vertical feet from berm top)	X		Not Applicable		
Free oil or sheen present on pit		X			
Flare Pit free of liquids	X		Not Applicable		
Comments:					
Inspector Signature:					
Printed Name: Weldon Higgins					
Title: rig consultant					
Date: 10/23/09 Phone: 505-320-4871					

Record Retention: Submit with Closure
 File: EH&S Well Files

Exploration & Production
 San Juan Basin Operations
 720 So. Main / PO Box 640
 Aztec, NM 87410
 505-634-4200 / 505-634-4205 fax



Temporary Pit Inspection

FACILITY INFORMATION

Facility Name: Rosa Unit #183C	API #: 30 - 039 -
---------------------------------------	--------------------------

Pit Type: Drilling Workover X Completion	Inspection: Daily (Rig) Weekly (Tech)
---	---

Pit Liner intact (no visible tears)	X Yes No If No, Report to EH&S immediately	Date Reported:	Time
Pit Properly Fenced (no fence on rig side if on site)	X Yes No Not Required (if site fully fenced)		
Pit Slopes intact	X Yes No		
Adequate freeboard (liquid level 2 <u>vertical</u> feet from berm top)	X Yes No Not Applicable		
Free oil or sheen present on pit	Yes X No		
Flare Pit free of liquids	X Yes No Not Applicable		
Comments:			
Inspector Signature:			
Printed Name: Weldon Higgins			
Title: rig consultant			
Date: 10/22/09		Phone: 505-320-4871	

Record Retention: Submit with Closure
 File: EH&S Well Files

Exploration & Production
 San Juan Basin Operations
 720 So. Main / PO Box 640
 Aztec, NM 87410
 505-634-4200 / 505-634-4205 fax



Temporary Pit Inspection

FACILITY INFORMATION

Facility Name: Rosa Unit #183C	API #: 30 - 039 -
---------------------------------------	--------------------------

Pit Type: Drilling Workover <input checked="" type="checkbox"/> Completion	Inspection: Daily (Rig) Weekly (Tech)
--	---

	X Yes	No	If No, Report to EH&S immediately	Date Reported:	Time
Pit Liner intact (no visible tears)	<input checked="" type="checkbox"/>				
Pit Properly Fenced (no fence on rig side if on site)	<input checked="" type="checkbox"/>		Not Required (if site fully fenced)		
Pit Slopes intact	<input checked="" type="checkbox"/>				
Adequate freeboard (liquid level 2 <u>vertical</u> feet from berm top)	<input checked="" type="checkbox"/>		Not Applicable		
Free oil or sheen present on pit		<input checked="" type="checkbox"/>			
Flare Pit free of liquids	<input checked="" type="checkbox"/>		Not Applicable		

Comments:

Inspector Signature:

Printed Name: Weldon Higgins

Title: rig consultant

Date: 10/21/09 Phone: 505-320-4871

Record Retention: Submit with Closure
 File: EH&S Well Files

Exploration & Production
San Juan Basin Operations
720 So. Main / PO Box 640
Aztec, NM 87410
505-634-4200 / 505-634-4205 fax



Temporary Pit Inspection

FACILITY INFORMATION

Facility Name: Rosa Unit #183C	API #: 30 - 039 -
--------------------------------	-------------------

Pit Type: Drilling	Workover	X Completion	Inspection: Daily (Rig)	Weekly (Tech)
--------------------	----------	--------------	-------------------------	---------------

	X Yes	No	If No, Report to EH&S immediately	Date Reported:	Time
Pit Liner intact (no visible tears)	X				
Pit Properly Fenced (no fence on rig side if on site)	X		Not Required (if site fully fenced)		
Pit Slopes intact	X				
Adequate freeboard (liquid level 2 vertical feet from berm top)	X		Not Applicable		
Free oil or sheen present on pit		X			
Flare Pit free of liquids	X		Not Applicable		
Comments:					
Inspector Signature:					
Printed Name: Weldon Higgins					
Title: rig consultant					
Date: 10/20/09 Phone: 505-320-4871					

Record Retention: Submit with Closure
File: EH&S Well Files

Exploration & Production
 San Juan Basin Operations
 720 So. Main / PO Box 640
 Aztec, NM 87410
 505-634-4200 / 505-634-4205 fax



Temporary Pit Inspection

FACILITY INFORMATION

Facility Name: Rosa Unit #183C	API #: 30 - 039 -
---------------------------------------	--------------------------

Pit Type: Drilling Workover X Completion	Inspection: Daily (Rig) Weekly (Tech)
---	---

Pit Liner intact (no visible tears)	X Yes No If No, Report to EH&S immediately	Date Reported:	Time
Pit Properly Fenced (no fence on rig side if on site)	X Yes No Not Required (if site fully fenced)		
Pit Slopes intact	X Yes No		
Adequate freeboard (liquid level 2 vertical feet from berm top)	X Yes No Not Applicable		
Free oil or sheen present on pit	Yes X No		
Flare Pit free of liquids	X Yes No Not Applicable		
Comments:			
Inspector Signature:			
Printed Name: Weldon Higgins			
Title: rig consultant			
Date: 10/19/09		Phone: 505-320-4871	

Record Retention: Submit with Closure.
 File: EH&S Well Files

Exploration & Production
 San Juan Basin Operations
 720 So. Main / PO Box 640
 Aztec, NM 87410
 505-634-4200 / 505-634-4205 fax



Temporary Pit Inspection

FACILITY INFORMATION

Facility Name: Rosa Unit #183C	API #: 30 - 039 -
---------------------------------------	--------------------------

Pit Type: Drilling Workover X Completion	Inspection: Daily (Rig) Weekly (Tech)
---	---

Pit Liner intact (no visible tears)	X Yes No If No, Report to EH&S immediately	Date Reported:	Time
Pit Property Fenced (no fence on rig side if on site)	X Yes No Not Required (if site fully fenced)		
Pit Slopes intact	X Yes No		
Adequate freeboard (liquid level 2 vertical feet from berm top)	X Yes No Not Applicable		
Free oil or sheen present on pit	Yes X No		
Flare Pit free of liquids	X Yes No Not Applicable		
Comments:			
Inspector Signature:			
Printed Name: Weldon Higgins			
Title: rig consultant			
Date: 10/18/09 Phone: 505-320-4871			

Record Retention: Submit with Closure
 File: EH&S Well Files

Exploration & Production
 San Juan Basin Operations
 720 So. Main / PO Box 640
 Aztec, NM 87410
 505-634-4200 / 505-634-4205 fax



Temporary Pit Inspection

FACILITY INFORMATION

Facility Name: Rosa Unit #183C	API #: 30 - 039 -
---------------------------------------	--------------------------

Pit Type: Drilling Workover X Completion	Inspection: Daily (Rig) Weekly (Tech)
---	---

Pit Liner intact (no visible tears)	X Yes No If No, Report to EH&S immediately	Date Reported:	Time
Pit Properly Fenced (no fence on rig side if on site)	X Yes No Not Required (if site fully fenced)		
Pit Slopes intact	X Yes No		
Adequate freeboard (liquid level 2 vertical feet from berm top)	X Yes No Not Applicable		
Free oil or sheen present on pit	Yes X No		
Flare Pit free of liquids	X Yes No Not Applicable		
Comments:			
Inspector Signature:			
Printed Name: Weldon Higgins			
Title: rig consultant			
Date: 10/17/09 Phone: 505-320-4871			

Record-Retention: Submit with Closure
 File: EH&S Well Files

Exploration & Production
 San Juan Basin Operations
 720 So. Main / PO Box 640
 Aztec, NM 87410
 505-634-4200 / 505-634-4205 fax



Temporary Pit Inspection

FACILITY INFORMATION

Facility Name: Rosa Unit #183C	API #: 30 - 039 -
---------------------------------------	--------------------------

Pit Type: Drilling Workover <input checked="" type="checkbox"/> Completion	Inspection: Daily (Rig) Weekly (Tech)
--	---

	X Yes	No	If No, Report to EH&S immediately	Date Reported:	Time
Pit Liner intact (no visible tears)	<input checked="" type="checkbox"/>				
Pit Properly Fenced (no fence on rig side if on site)	<input checked="" type="checkbox"/>		Not Required (if site fully fenced)		
Pit Slopes intact	<input checked="" type="checkbox"/>				
Adequate freeboard (liquid level 2 vertical feet from berm top)	<input checked="" type="checkbox"/>		Not Applicable		
Free oil or sheen present on pit		<input checked="" type="checkbox"/>			
Flare Pit free of liquids	<input checked="" type="checkbox"/>		Not Applicable		

Comments:

Inspector Signature:

Printed Name: Weldon Higgins

Title: rig consultant

Date: 10/16/09 Phone: 505-320-4871

Record Retention: Submit with Closure
 File: EH&S Well Files

Exploration & Production
 San Juan Basin Operations
 720 So. Main / PO Box 640
 Aztec, NM 87410
 505-634-4200 / 505-634-4205 fax



Temporary Pit Inspection

FACILITY INFORMATION

Facility Name: Rosa Unit #183C	API #: 30 - 039 -
---------------------------------------	--------------------------

Pit Type: Drilling Workover X Completion	Inspection: Daily (Rig) Weekly (Tech)
---	---

	X Yes	No	If No, Report to EH&S immediately	Date Reported:	Time
Pit Liner intact (no visible tears)	X				
Pit Properly Fenced (no fence on rig side if on site)	X		Not Required (if site fully fenced)		
Pit Slopes intact	X				
Adequate freeboard (liquid level 2 vertical feet from berm top)	X		Not Applicable		
Free oil or sheen present on pit		X	No		
Flare Pit free of liquids	X		Not Applicable		

Comments:

Inspector Signature:

Printed Name: Weldon Higgins

Title: rig consultant

Date: 10/15/09 Phone: 505-320-4871

Record Retention: Submit with Closure
 File: EH&S Well Files

Exploration & Production
 San Juan Basin Operations
 720 So. Main / PO Box 640
 Aztec, NM 87410
 505-634-4200 / 505-634-4205 fax



Temporary Pit Inspection

FACILITY INFORMATION

Facility Name: Rosa Unit #183C	API #: 30 - 039 -
---------------------------------------	--------------------------

Pit Type: Drilling Workover <input checked="" type="checkbox"/> Completion	Inspection: Daily (Rig) Weekly (Tech)
--	---

	X Yes	No	If No, Report to EH&S immediately	Date Reported:	Time
Pit Liner intact (no visible tears)	<input checked="" type="checkbox"/>				
Pit Properly Fenced (no fence on rig side if on site)	<input checked="" type="checkbox"/>		Not Required (if site fully fenced)		
Pit Slopes intact	<input checked="" type="checkbox"/>				
Adequate freeboard (liquid level 2 vertical feet from berm top)	<input checked="" type="checkbox"/>		Not Applicable		
Free oil or sheen present on pit		<input checked="" type="checkbox"/>			
Flare Pit free of liquids	<input checked="" type="checkbox"/>		Not Applicable		

Comments:

Inspector Signature:

Printed Name: Weldon Higgins

Title: rig consultant

Date: 10/13/09 Phone: 505-320-4871

Record Retention: Submit with Closure.
 File: EH&S Well Files

Exploration & Production
 San Juan Basin Operations
 720 So. Main / PO Box 640
 Aztec, NM 87410
 505-634-4200 / 505-634-4205 fax



Temporary Pit Inspection

FACILITY INFORMATION

Facility Name: Rosa Unit #183C	API #: 30 - 039 -
---------------------------------------	--------------------------

Pit Type: Drilling Workover <input checked="" type="checkbox"/> Completion	Inspection: Daily (Rig) Weekly (Tech)
--	---

	X Yes	No	If No, Report to EH&S immediately	Date Reported:	Time
Pit Liner intact (no visible tears)	<input checked="" type="checkbox"/>				
Pit Properly Fenced (no fence on rig side if on site)	<input checked="" type="checkbox"/>		Not Required (if site fully fenced)		
Pit Slopes intact	<input checked="" type="checkbox"/>		No		
Adequate freeboard (liquid level 2 vertical feet from berm top)	<input checked="" type="checkbox"/>		Not Applicable		
Free oil or sheen present on pit		<input checked="" type="checkbox"/>	No		
Flare Pit free of liquids	<input checked="" type="checkbox"/>		Not Applicable		

Comments:

Inspector Signature:

Printed Name: Weldon Higgins

Title: rig consultant

Date: 10/12/09 Phone: 505-320-4871

Record Retention: Submit with Closure
 File: EH&S Well Files

Exploration & Production
 San Juan Basin Operations
 720 So. Main / PO Box 640
 Aztec, NM 87410
 505-634-4200 / 505-634-4205 fax



Temporary Pit Inspection

FACILITY INFORMATION

Facility Name: Rosa Unit #183C	API #: 30 - 039 -
---------------------------------------	--------------------------

Pit Type: Drilling Workover <input checked="" type="checkbox"/> Completion	Inspection: Daily (Rig) Weekly (Tech)
--	---

	X Yes	No	If No, Report to EH&S immediately	Date Reported:	Time
Pit Liner intact (no visible tears)	<input checked="" type="checkbox"/>				
Pit Properly Fenced (no fence on rig side if on site)	<input checked="" type="checkbox"/>		Not Required (if site fully fenced)		
Pit Slopes intact	<input checked="" type="checkbox"/>				
Adequate freeboard (liquid level 2 vertical feet from berm top)	<input checked="" type="checkbox"/>		Not Applicable		
Free oil or sheen present on pit		<input checked="" type="checkbox"/>			
Flare Pit free of liquids	<input checked="" type="checkbox"/>		Not Applicable		

Comments:

Inspector Signature:

Printed Name: Weldon Higgins

Title: rig consultant

Date: 10/11/09 Phone: 505-320-4871

Record Retention: Submit with Closure
 File: EH&S Well Files

Exploration & Production
 San Juan Basin Operations
 720 So. Main / PO Box 640
 Aztec, NM 87410
 505-634-4200 / 505-634-4205 fax



Temporary Pit Inspection

FACILITY INFORMATION

Facility Name: Rosa Unit #183C	API #: 30 - 039 -
---------------------------------------	--------------------------

Pit Type: Drilling Workover <input checked="" type="checkbox"/> Completion	Inspection: Daily (Rig) Weekly (Tech)
--	---

	X Yes	No	If No, Report to EH&S immediately	Date Reported:	Time
Pit Liner intact (no visible tears)	<input checked="" type="checkbox"/>				
Pit Properly Fenced (no fence on rig side if on site)	<input checked="" type="checkbox"/>		Not Required (if site fully fenced)		
Pit Slopes intact	<input checked="" type="checkbox"/>				
Adequate freeboard (liquid level 2 vertical feet from berm top)	<input checked="" type="checkbox"/>		Not Applicable		
Free oil or sheen present on pit		<input checked="" type="checkbox"/>			
Flare Pit free of liquids	<input checked="" type="checkbox"/>		Not Applicable		

Comments:

Inspector Signature:

Printed Name: Weldon Higgins

Title: rig consultant

Date: 10/10/09 Phone: 505-320-4871

Record Retention: Submit with Closure
 File: EH&S Well Files

Exploration & Production
 San Juan Basin Operations
 720 So. Main / PO Box 640
 Aztec, NM 87410
 505-634-4200 / 505-634-4205 fax



Temporary Pit Inspection

FACILITY INFORMATION

Facility Name: Rosa Unit #183C	API #: 30 - 039 -
---------------------------------------	--------------------------

Pit Type: Drilling Workover <input checked="" type="checkbox"/> Completion	Inspection: Daily (Rig) Weekly (Tech)
--	---

	X Yes	No	If No, Report to EH&S immediately	Date Reported:	Time
Pit Liner intact (no visible tears)	<input checked="" type="checkbox"/>				
Pit Properly Fenced (no fence on rig side if on site)	<input checked="" type="checkbox"/>		Not Required (if site fully fenced)		
Pit Slopes intact	<input checked="" type="checkbox"/>				
Adequate freeboard (liquid level 2 vertical feet from berm top)	<input checked="" type="checkbox"/>		Not Applicable		
Free oil or sheen present on pit		<input checked="" type="checkbox"/>			
Flare Pit free of liquids	<input checked="" type="checkbox"/>		Not Applicable		

Comments:

Inspector Signature:

Printed Name: Weldon Higgins

Title: rig consultant

Date: 10/09/09 Phone: 505-320-4871

Record Retention: Submit with Closure
 File: EH&S Well Files

Exploration & Production
 San Juan Basin Operations
 720 So. Main / PO Box 640
 Aztec, NM 87410
 505-634-4200 / 505-634-4205 fax



Temporary Pit Inspection

FACILITY INFORMATION

Facility Name: Rosa Unit #183C	API #: 30 - 039 -
---------------------------------------	--------------------------

Pit Type: Drilling Workover <input checked="" type="checkbox"/> Completion	Inspection: Daily (Rig) Weekly (Tech)
--	---

	X Yes	No	If No, Report to EH&S immediately	Date Reported:	Time
Pit Liner intact (no visible tears)	<input checked="" type="checkbox"/>				
Pit Properly Fenced (no fence on rig side if on site)	<input checked="" type="checkbox"/>		Not Required (if site fully fenced)		
Pit Slopes intact	<input checked="" type="checkbox"/>				
Adequate freeboard (liquid level 2 vertical feet from berm top)	<input checked="" type="checkbox"/>		Not Applicable		
Free oil or sheen present on pit		<input checked="" type="checkbox"/>			
Flare Pit free of liquids	<input checked="" type="checkbox"/>		Not Applicable		

Comments:

Inspector Signature:

Printed Name: Weldon Higgins

Title: rig consultant

Date: 10/08/09 Phone: 505-320-4871

Record-Retention: Submit with Closure
 File: EH&S Well Files

Exploration & Production
 San Juan Basin Operations
 720 So. Main / PO Box 640
 Aztec, NM 87410
 505-634-4200 / 505-634-4205 fax



Temporary Pit Inspection

FACILITY INFORMATION

Facility Name: Rosa Unit #183C	API #: 30 - 039 -
---------------------------------------	--------------------------

Pit Type: Drilling Workover X Completion	Inspection: Daily (Rig) Weekly (Tech)
---	---

	X Yes	No	If No, Report to EH&S immediately	Date Reported:	Time
Pit Liner intact (no visible tears)	X				
Pit Properly Fenced (no fence on rig side if on site)	X		Not Required (if site fully fenced)		
Pit Slopes intact	X		No		
Adequate freeboard (liquid level 2 vertical feet from berm top)	X		Not Applicable		
Free oil or sheen present on pit		X	No		
Flare Pit free of liquids	X		Not Applicable		
Comments:					
Inspector Signature:					
Printed Name: Weldon Higgins					
Title: rig consultant					
Date: 10/07/09 Phone: 505-320-4871					

Record-Retention: Submit with Closure
 File: EH&S Well Files

Exploration & Production
 San Juan Basin Operations
 720 So. Main / PO Box 640
 Aztec, NM 87410
 505-634-4200 / 505-634-4205 fax



Temporary Pit Inspection

FACILITY INFORMATION

Facility Name: Rosa Unit #183C	API #: 30 - 039 -
---------------------------------------	--------------------------

Pit Type: Drilling Workover <input checked="" type="checkbox"/> Completion	Inspection: Daily (Rig) Weekly (Tech)
--	---

	X Yes	No	If No, Report to EH&S immediately	Date Reported:	Time
Pit Liner intact (no visible tears)	<input checked="" type="checkbox"/>				
Pit Properly Fenced (no fence on rig side if on site)	<input checked="" type="checkbox"/>		Not Required (if site fully fenced)		
Pit Slopes intact	<input checked="" type="checkbox"/>				
Adequate freeboard (liquid level 2 vertical feet from berm top)	<input checked="" type="checkbox"/>		Not Applicable		
Free oil or sheen present on pit		<input checked="" type="checkbox"/>			
Flare Pit free of liquids	<input checked="" type="checkbox"/>		Not Applicable		

Comments:

Inspector Signature:

Printed Name: Weldon Higgins

Title: rig consultant

Date: 10/06/09 Phone: 505-320-4871

Record Retention: -Submit with Closure
 File: EH&S Well Files

Exploration & Production
 San Juan Basin Operations
 720 So. Main / PO Box 640
 Aztec, NM 87410
 505-634-4200 / 505-634-4205 fax



Temporary Pit Inspection

FACILITY INFORMATION

Facility Name: Rosa Unit #183C	API #: 30 - 039 -
---------------------------------------	--------------------------

Pit Type: Drilling Workover <input checked="" type="checkbox"/> Completion	Inspection: Daily (Rig) Weekly (Tech)
--	---

Pit Liner intact (no visible tears)	<input checked="" type="checkbox"/> Yes No If No, Report to EH&S immediately	Date Reported:	Time
Pit Properly Fenced (no fence on rig side if on site)	<input checked="" type="checkbox"/> Yes No Not Required (if site fully fenced)		
Pit Slopes intact	<input checked="" type="checkbox"/> Yes No		
Adequate freeboard (liquid level 2 vertical feet from berm top)	<input checked="" type="checkbox"/> Yes No Not Applicable		
Free oil or sheen present on pit	Yes <input checked="" type="checkbox"/> No		
Flare Pit free of liquids	<input checked="" type="checkbox"/> Yes No Not Applicable		

Comments:

Inspector Signature:

Printed Name: Weldon Higgins

Title: rig consultant

Date: 10/05/09 Phone: 505-320-4871

Record Retention: Submit with Closure
 File: EH&S Well Files

Exploration & Production
 San Juan Basin Operations
 720 So. Main / PO Box 640
 Aztec, NM 87410
 505-634-4200 / 505-634-4205 fax



Temporary Pit Inspection

FACILITY INFORMATION

Facility Name: Rosa Unit #183C	API #: 30 - 039 -
---------------------------------------	--------------------------

Pit Type: Drilling Workover <input checked="" type="checkbox"/> Completion	Inspection: Daily (Rig) Weekly (Tech)
--	---

Pit Liner intact (no visible tears)	<input checked="" type="checkbox"/> Yes No If No, Report to EH&S immediately	Date Reported:	Time
Pit Properly Fenced (no fence on rig side if on site)	<input checked="" type="checkbox"/> Yes No Not Required (if site fully fenced)		
Pit Slopes intact	<input checked="" type="checkbox"/> Yes No		
Adequate freeboard (liquid level 2 vertical feet from berm top)	<input checked="" type="checkbox"/> Yes No Not Applicable		
Free oil or sheen present on pit	Yes <input checked="" type="checkbox"/> No		
Flare Pit free of liquids	<input checked="" type="checkbox"/> Yes No Not Applicable		

Comments:

Inspector Signature:

Printed Name: Weldon Higgins

Title: rig consultant

Date: 10/04/09 Phone: 505-320-4871

-Record Retention: Submit with Closure File. EH&S Well Files



Exploration & Production
 San Juan Basin Operations
 720 So. Main / PO Box 640
 Aztec, NM 87410
 505-634-4200 / 505-634-4205 fax

Temporary Pit Inspection

FACILITY INFORMATION

Facility Name: Rosa unit# 183-C	API #: 30-039-30764
--	----------------------------

Pit Type: <input checked="" type="checkbox"/> Drilling <input type="checkbox"/> Workover <input type="checkbox"/> Cavitation	Inspection: <input checked="" type="checkbox"/> Daily <input type="checkbox"/> Weekly <input type="checkbox"/> Monthly
---	---

Pit Liner intact (no visible tears)	<input checked="" type="checkbox"/> Yes <input type="checkbox"/> No If No, Report to EH&S immediately	Date / Time Reported:
Pit Properly Fenced (no fence on rig side if on site)	<input checked="" type="checkbox"/> Yes <input type="checkbox"/> No <input type="checkbox"/> Not Required (if site fully fenced)	
Pit Slopes intact	<input checked="" type="checkbox"/> Yes <input type="checkbox"/> No	
Adequate freeboard (liquid level 2 vertical feet from berm top)	<input checked="" type="checkbox"/> Yes <input type="checkbox"/> No <input type="checkbox"/> Not Applicable	
Free oil or sheen present on pit	<input type="checkbox"/> Yes <input checked="" type="checkbox"/> No	
Flare Pit free of liquids	<input checked="" type="checkbox"/> Yes <input type="checkbox"/> No <input type="checkbox"/> Not Applicable	

Comments:

Inspector Signature: WILLIE MOCK
Printed Name: WILLIE MOCK
Title: Drlg Consultant (TDCI)
Date: 08/24/2009 Phone: (505) 7931276

Record Retention: Submit with Closure
 File: EH&S

Exploration & Production
 San Juan Basin Operations
 720 So. Main / PO Box 640
 Aztec, NM 87410
 505-634-4200 / 505-634-4205 fax



Temporary Pit Inspection

FACILITY INFORMATION

Facility Name: Rosa Unit #183C	API #: 30 - 039 -
---------------------------------------	--------------------------

Pit Type: Drilling <input type="checkbox"/> Workover <input type="checkbox"/> X Completion <input checked="" type="checkbox"/>	Inspection: Daily (Rig) <input type="checkbox"/> Weekly (Tech) <input type="checkbox"/>
---	--

	X Yes	No	If No, Report to EH&S immediately	Date Reported:	Time
Pit Liner intact (no visible tears)	X				
Pit Properly Fenced (no fence on rig side if on site)	X		Not Required (if site fully fenced)		
Pit Slopes intact	X		No		
Adequate freeboard (liquid level 2 vertical feet from berm top)	X		No Not Applicable		
Free oil or sheen present on pit		Yes	X No		
Flare Pit free of liquids	X		No Not Applicable		

Comments:

Inspector Signature:

Printed Name: Weldon Higgins

Title: rig consultant

Date: 9/30/09 Phone: 505-320-4871

Record Retention: Submit with Closure
 File: EH&S Well Files

Exploration & Production
 San Juan Basin Operations
 720 So. Main / PO Box 640
 Aztec, NM 87410
 505-634-4200 / 505-634-4205 fax



Temporary Pit Inspection

FACILITY INFORMATION

dk/me/mv 183c	API #: 30=039-30764
---------------	---------------------

Pit Type: <input checked="" type="checkbox"/> Drilling <input type="checkbox"/> Workover <input type="checkbox"/> Cavitation	Inspection: <input checked="" type="checkbox"/> Daily (Rig) <input type="checkbox"/> Weekly (Tech)
--	---

Pit Liner intact (no visible tears)	<input checked="" type="checkbox"/> Yes <input type="checkbox"/> No If No, Report to EH&S immediately	Date / Time Reported to EH&S: 3-30-10 9am
Pit Properly Fenced (no fence on rig side if on site)	<input checked="" type="checkbox"/> Yes <input type="checkbox"/> No <input type="checkbox"/> Not Required (if site fully fenced)	
Pit Slopes intact	<input checked="" type="checkbox"/> Yes <input type="checkbox"/> No	
Adequate freeboard (liquid level 2 vertical feet from berm top)	<input checked="" type="checkbox"/> Yes <input type="checkbox"/> No <input type="checkbox"/> Not Applicable	
Does pit have oil or sheen on it?	<input type="checkbox"/> Yes <input checked="" type="checkbox"/> No	
Flare Pit free of liquids	<input checked="" type="checkbox"/> Yes <input type="checkbox"/> No <input type="checkbox"/> Not Applicable	
Comments:		
Inspector Signature: Tommy Clements		
Printed Name: Tommy Clements		
Title:		
Date:		
Phone:		

Record Retention. Submit with Closure
 File: EH&S Well Files

Exploration & Production
 San Juan Basin Operations
 720 So. Main / PO Box 640
 Aztec, NM 87410
 505-634-4200 / 505-634-4205 fax



Temporary Pit Inspection

FACILITY INFORMATION

dk/me/mv 183c	API #: 30=039-30764
---------------	---------------------

Pit Type: x <input type="checkbox"/> Drilling <input type="checkbox"/> Workover <input type="checkbox"/> Cavitation	Inspection: x <input type="checkbox"/> Daily (Rig) <input type="checkbox"/> Weekly (Tech)
---	--

Pit Liner intact (no visible tears)	x <input type="checkbox"/> Yes <input type="checkbox"/> No If No, Report to EH&S immediately	Date / Time Repo 4/12/10
Pit Properly Fenced (no fence on rig side if on site)	x <input type="checkbox"/> Yes <input type="checkbox"/> No <input type="checkbox"/> Not Required (if site fully fenced)	
Pit Slopes intact	x <input type="checkbox"/> Yes <input type="checkbox"/> No	
Adequate freeboard (liquid level 2 vertical feet from berm top)	x <input type="checkbox"/> Yes <input type="checkbox"/> No <input type="checkbox"/> Not Applicable	
Does pit have oil or sheen on it?	<input type="checkbox"/> Yes <input checked="" type="checkbox"/> No	
Flare Pit free of liquids	x <input type="checkbox"/> Yes <input type="checkbox"/> No <input type="checkbox"/> Not Applicable	
Comments:		
Inspector Signature: Tommy Clements		
Printed Name: Tommy Clements		
Title:		
Date:		
Phone:		

Record Retention: Submit with Closure
 File. EH&S Well Files

Exploration & Production
 San Juan Basin Operations
 720 So. Main / PO Box 640
 Aztec, NM 87410
 505-634-4200 / 505-634-4205 fax



Temporary Pit Inspection

FACILITY INFORMATION

dk/me/mv 183c	API #: 30=039-30764
---------------	---------------------

Pit Type: x <input type="checkbox"/> Drilling <input type="checkbox"/> Workover <input type="checkbox"/> Cavitation	Inspection: x <input type="checkbox"/> Daily (Rig) <input type="checkbox"/> Weekly (Tech)
---	--

Pit Liner intact (no visible tears)	x <input type="checkbox"/> Yes <input type="checkbox"/> No If No, Report to EH&S immediately	Date / Time Repo 4/26/10
Pit Properly Fenced (no fence on rig side if on site)	x <input type="checkbox"/> Yes <input type="checkbox"/> No <input type="checkbox"/> Not Required (if site fully fenced)	
Pit Slopes intact	x <input type="checkbox"/> Yes <input type="checkbox"/> No	
Adequate freeboard (liquid level 2 vertical feet from berm top)	x <input type="checkbox"/> Yes <input type="checkbox"/> No <input type="checkbox"/> Not Applicable	
Does pit have oil or sheen on it?	<input type="checkbox"/> Yes <input checked="" type="checkbox"/> No	
Flare Pit free of liquids	x <input type="checkbox"/> Yes <input type="checkbox"/> No <input type="checkbox"/> Not Applicable	
Comments:		
Inspector Signature: Tommy Clements		
Printed Name: Tommy Clements		
Title:		
Date:		
Phone:		

Record Retention: Submit with Closure
 File: EH&S Well Files

Exploration & Production
 San Juan Basin Operations
 720 So. Main / PO Box 640
 Aztec, NM 87410
 505-634-4200 / 505-634-4205 fax



Temporary Pit Inspection

FACILITY INFORMATION

Facility Name:	API #:
Rosa #183C	30- 039-30764

Pit Type: x Drilling <input type="checkbox"/> Workover <input type="checkbox"/> Cavitation	Inspection: <input type="checkbox"/> Daily (Rig) x Weekly (Tech)
---	---

Pit Liner intact (no visible tears)	x Yes <input type="checkbox"/> No If No, Report to EH&S immediately	Date / Time Reported to EH&S: 5/7/10
Pit Properly Fenced (no fence on rig side if on site)	x Yes <input type="checkbox"/> No <input type="checkbox"/> Not Required (if site fully fenced)	
Pit Slopes intact	x Yes <input type="checkbox"/> No	
Adequate freeboard (liquid level 2 vertical feet from berm top)	<input type="checkbox"/> Yes <input type="checkbox"/> No x Not Applicable	
Does pit have oil or sheen on it?	<input type="checkbox"/> Yes x No	
Flare Pit free of liquids	x Yes <input type="checkbox"/> No <input type="checkbox"/> Not Applicable	

Comments: Pit is dry, all liner intact (no tears), fence in good condition

Inspector Signature:

Printed Name: Levi Thorson

Title: Field Technician

Date: 5/7/10

Phone: (505)330-6034

Record Retention: Submit with Closure
 File: EH&S Well Files

Exploration & Production
 San Juan Basin Operations
 720 So. Main / PO Box 640
 Aztec, NM 87410
 505-634-4200 / 505-634-4205 fax



Temporary Pit Inspection

FACILITY INFORMATION

Facility Name:	API #:
Rosa #183C	30- 039-30764

Pit Type: Drilling Workover Cavitation **Inspection:** Daily (Rig) Weekly (Tech)

Pit Liner intact (no visible tears)	x Yes <input type="checkbox"/> No If No, Report to EH&S immediately	Date / Time Reported to EH&S: 5/14/10
Pit Properly Fenced (no fence on rig side if on site)	x Yes <input type="checkbox"/> No <input type="checkbox"/> Not Required (if site fully fenced)	
Pit Slopes intact	x Yes <input type="checkbox"/> No	
Adequate freeboard (liquid level 2 vertical feet from berm top)	<input type="checkbox"/> Yes <input type="checkbox"/> No <input checked="" type="checkbox"/> Not Applicable	
Does pit have oil or sheen on it?	<input type="checkbox"/> Yes <input checked="" type="checkbox"/> No	
Flare Pit free of liquids	x Yes <input type="checkbox"/> No <input type="checkbox"/> Not Applicable	

Comments: Pit is dry, all liner intact (no tears), fence in good condition

Inspector Signature:

Printed Name: Levi Thorson

Title: Field Technician

Date: 5/14/10

Phone: (505)330-6034

Record Retention Submit with Closure
 File: EH&S Well Files

Exploration & Production
 San Juan Basin Operations
 720 So. Main / PO Box 640
 Aztec, NM 87410
 505-634-4200 / 505-634-4205 fax



Temporary Pit Inspection

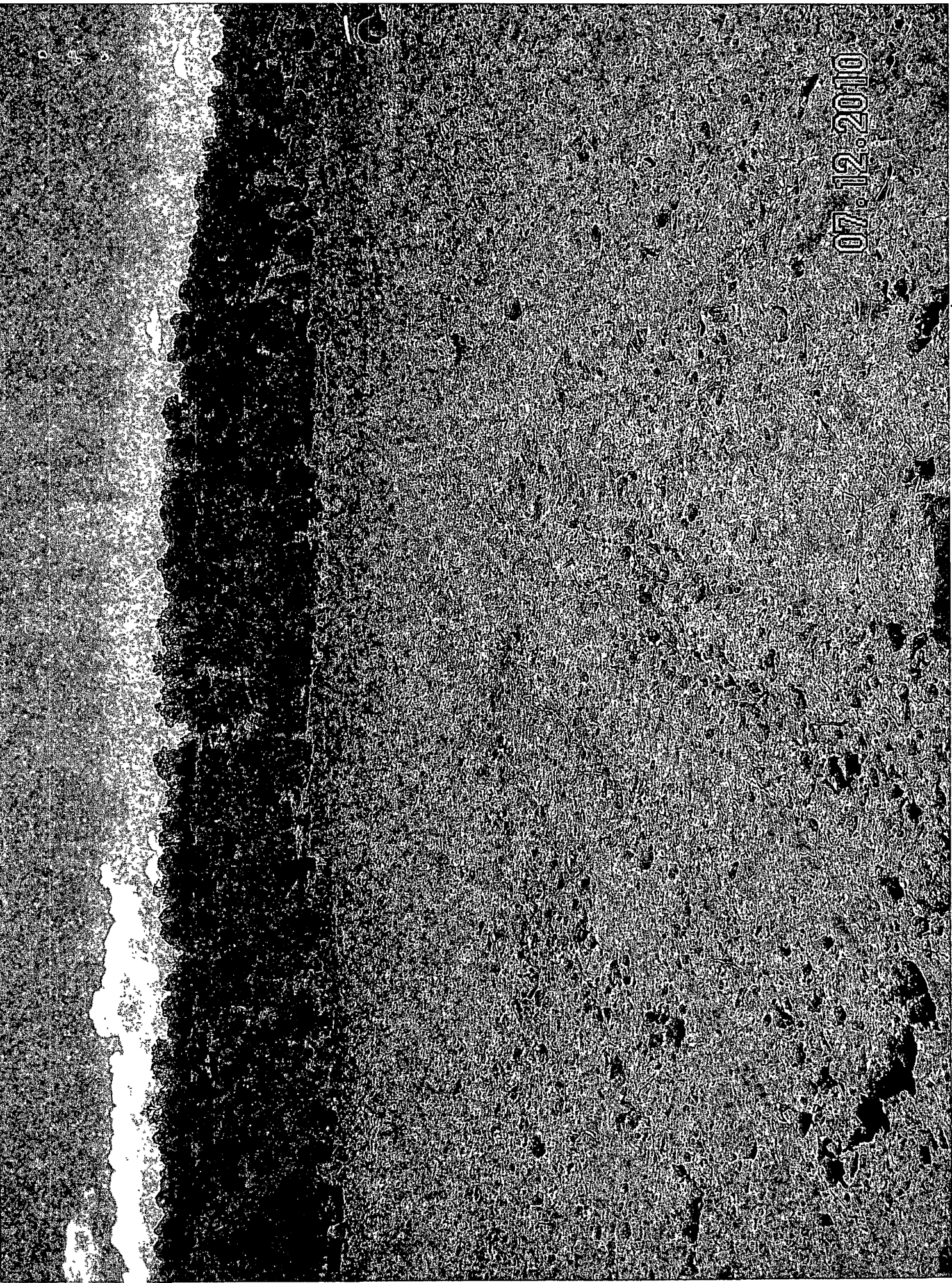
FACILITY INFORMATION

Facility Name:	API #:
Rosa #183C	30- 039-30764

Pit Type: Drilling Workover Cavitation **Inspection:** Daily (Rig) Weekly (Tech)

Pit Liner intact (no visible tears)	x Yes <input type="checkbox"/> No If No, Report to EH&S immediately	Date / Time Reported to EH&S: 5/21/10
Pit Properly Fenced (no fence on rig side if on site)	x Yes <input type="checkbox"/> No <input type="checkbox"/> Not Required (if site fully fenced)	
Pit Slopes intact	x Yes <input type="checkbox"/> No	
Adequate freeboard (liquid level 2 vertical feet from berm top)	<input type="checkbox"/> Yes <input type="checkbox"/> No <input checked="" type="checkbox"/> Not Applicable	
Does pit have oil or sheen on it?	<input type="checkbox"/> Yes <input checked="" type="checkbox"/> No	
Flare Pit free of liquids	x Yes <input type="checkbox"/> No <input type="checkbox"/> Not Applicable	
Comments: Pit is dry, all liner intact (no tears), fence in good condition		
Inspector Signature:		
Printed Name: Levi Thorson		
Title: Field Technician		
Date: 5/21/10	Phone: (505)330-6034	

Record Retention: Submit with Closure
 File: EH&S Well Files



07.12.2010

10220 An-100



100

100

100

100

100

100

100



100

100

100





Exploration & Production
PO Box 640
Aztec, NM 87410
505/634-4219
505/634-4205 fax



Transmittal

To: Brandon Powell
NMOCD
1000 Rio Brazos Road
Aztec, New Mexico 87410

From: Tasha Meador
San Juan- Permitting Technician
505-634-4241
tasha.meador@williams.com

Date:

Re: Supplemental Submittal

Temporary Pit Closure report: NMOCD Permit # 6777

Enclosed and per your direction, please find our supplemental submittal for the referenced temporary pit closure report.

Please advise if additional information is required. Thank you for your time and consideration. Please call or contact me if there are any questions.

Respectfully resubmitted,

Tasha Meador
Williams Exploration & Production
721 S Main Aztec, NM
Office: 505-634-4200
Direct: 505-634-4241
Fax: 505-634-4205
tasha.meador@williams.com

Encl:

District I
1625 N French Dr., Hobbs, NM 88240

District II
1301 W Grand Avenue, Artesia, NM 88210

District III
1000 Rio Brazos Rd., Aztec, NM 87410

District IV
1220 S. St. Francis Dr., Santa Fe, NM 87505

State of New Mexico
Energy, Minerals & Natural Resources Department

OIL CONSERVATION DIVISION
1220 South St. Francis Dr.
Santa Fe, NM 87505

Form C-102
Revised October 12, 2005
Instructions on back
Submit to Appropriate District Office
State Lease - 4 Copies
Fee Lease - 3 Copies

AMENDED REPORT

WELL LOCATION AND ACREAGE DEDICATION PLAT

¹ API Number 30039-3076	² Pool Code 97232 / 72319 / 71599	³ Pool Name BASIN MANCOS / BLANCO MESAVERDE / BASIN DAKOTA
⁴ Property Code 17033	⁵ Property Name ROSA UNIT	
⁶ Well Number 183C	⁷ Operator Name WILLIAMS PRODUCTION COMPANY	
⁸ OGRID No. 120782	⁹ Elevation 5327	

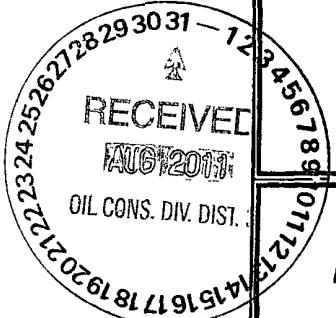
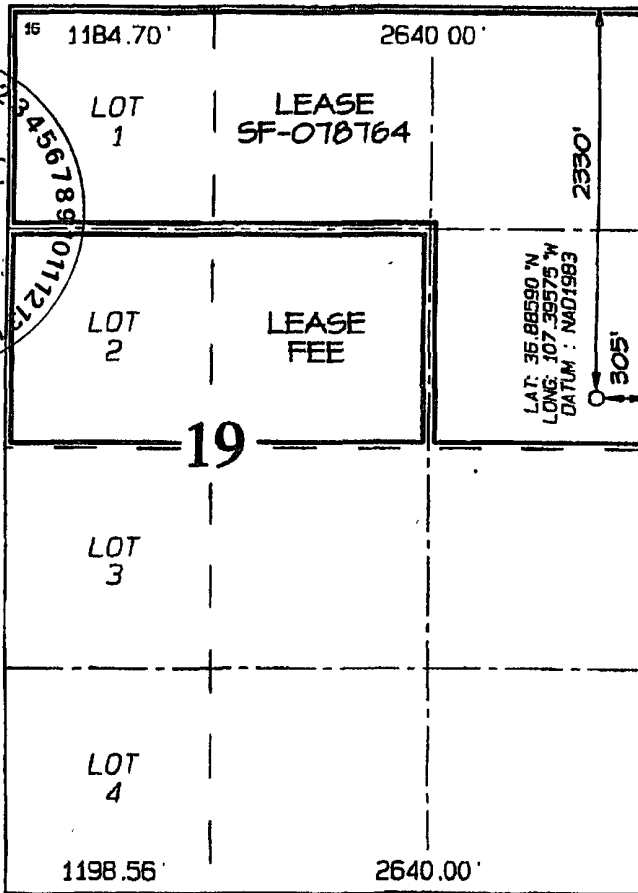
¹⁰ Surface Location

UL or lot no.	Section	Township	Range	Lot 101	Feet from the	North/South line	Feet from the	East/West line	County
H	19	31N	5W		2330	NORTH	305	EAST	RIO ARRIBA

¹¹ Bottom Hole Location If Different From Surface

UL or lot no.	Section	Township	Range	Lot 101	Feet from the	North/South line	Feet from the	East/West line	County
					¹² Dedicatd Acres 232.01 Acres - (N/2)	¹³ Joint or Int'l?	¹⁴ Consolidation Code	¹⁵ Order No.	

NO ALLOWABLE WILL BE ASSIGNED TO THIS COMPLETION UNTIL ALL INTERESTS HAVE BEEN CONSOLIDATED OR A NON-STANDARD UNIT HAS BEEN APPROVED BY THE DIVISION



¹⁷ OPERATOR CERTIFICATION
I hereby certify that the information contained herein is true and complete to the best of my knowledge and belief, and that this organization either owns a working interest or unleased mineral interest in the land including the proposed bottom-hole location or has a right to drill this well at this location pursuant to a contract with an owner of such a mineral or working interest, or to a voluntary pooling agreement or a compulsory pooling order heretofore entered by the division.

Heather Riley 10/30/09
Signature Date
Heather Riley
Printed Name

¹⁸ SURVEYOR CERTIFICATION
I hereby certify that the well location shown on this plat was plotted from field notes of actual surveys made by me or under my supervision, and that the same is true and correct to the best of my belief.

Date of Survey: APRIL 5, 2009
Signature and Seal of Professional Surveyor

JASON C. EDWARDS
Certificate Number 15269

Submit To Appropriate District Office
Two Copies
District I
1625 N French Dr Hobbs, NM 88240
District II
1301 W Grand Avenue Artesia, NM 88210
District III
1000 Rio Brazos Rd., Aztec, NM 87410
District IV
1220 S St Francis Dr Santa Fe, NM 87505

State of New Mexico
Energy, Minerals and Natural Resources

Form C-105
July 17, 2008

Oil Conservation Division
1220 South St. Francis Dr.
Santa Fe, NM 87505

1 WELL API NO.
30-039-30764
2 Type of Lease
 STATE FEE FED/INDIAN
3 State Oil & Gas Lease No SF-078764

WELL COMPLETION OR RECOMPLETION REPORT AND LOG

4 Reason for filing
 COMPLETION REPORT (Fill in boxes #1 through #31 for State and Fee wells only)
 C-144 CLOSURE ATTACHMENT (Fill in boxes #1 through #9, #15 Date Rig Released and #32 and/or #33, attach this and the plat to the C-144 closure report in accordance with 19 15 17 13 K NMAC)

5 Lease Name or Unit Agreement Name
Rosa

6 Well Number
Rosa Unit #183C

7 Type of Completion
 NEW WELL WORKOVER DEEPENING PLUGBACK DIFFERENT RESERVOIR OTHER

8 Name of Operator WILLIAMS PRODUCTION, LLC

9 OGRID 120782

10 Address of Operator P O BOX 640 AZTEC, NM 87410

11 Pool name or Wildcat

12. Location	Unit Ltr	Section	Township	Range	Lot	Feet from the	N/S Line	Feet from the	E/W Line	County
Surface:										
BH:										

13 Date Spudded

14 Date T D Reached

15 Date Rig Released 10/29/2009

16 Date Completed (Ready to Produce)

17 Elevations (DF and RKB, RT, GR, etc)

18 Total Measured Depth of Well

19 Plug Back Measured Depth

20 Was Directional Survey Made?

21 Type Electric and Other Logs Run

22 Producing Interval(s), of this completion - Top, Bottom, Name

23 CASING RECORD (Report all strings set in well)

CASING SIZE	WEIGHT LB /FT	DEPTH SET	HOLE SIZE	CEMENTING RECORD	AMOUNT PULLED

24. LINER RECORD				25 TUBING RECORD			
SIZE	TOP	BOTTOM	SACKS CEMENT	SCREEN	SIZE	DEPTH SET	PACKER SET

26 Perforation record (interval, size, and number)

27 ACID, SHOT, FRACTURE, CEMENT, SQUEEZE, ETC

DEPTH INTERVAL	AMOUNT AND KIND MATERIAL USED

28 PRODUCTION

Date First Production

Production Method (Flowing, gas lift, pumping - Size and type pump)

Well Status (Prod or Shut-in)

Date of Test	Hours Tested	Choke Size	Prod'n For Test Period	Oil - Bbl	Gas - MCF	Water - Bbl	Gas - Oil Ratio

Flow Tubing Press	Casing Pressure	Calculated 24-Hour Rate	Oil - Bbl	Gas - MCF	Water - Bbl	Oil Gravity - API - (Corr)

29 Disposition of Gas (Sold, used for fuel, vented, etc)

30 Test Witnessed By

31 List Attachments

32 If a temporary pit was used at the well, attach a plat with the location of the temporary pit

33 If an on-site burial was used at the well, report the exact location of the on-site burial

Latitude 36 885900 Longitude 107 39575 NAD 1927 1983

I hereby certify that the information shown on both sides of this form is true and complete to the best of my knowledge and belief

Tasha Meador Printed Name

Signature *Tasha Meador*

Title Permit Technician Date 8/29/11

E-mail Address: tasha.meador@williams.com