

District I  
1625 N French Dr., Hobbs, NM 88240  
District II  
1301 W Grand Avenue, Artesia, NM 88210  
District III  
1000 Rio Brazos Road, Aztec, NM 87410  
District IV  
1220 S. St. Francis Dr., Santa Fe, NM 87505

State of New Mexico  
Energy Minerals and Natural Resources  
Department  
Oil Conservation Division  
1220 South St. Francis Dr.  
Santa Fe, NM 87505

Form C-144  
July 21, 2008

For temporary pits, closed-loop systems, and below-grade tanks, submit to the appropriate NMOCD District Office.  
For permanent pits and exceptions submit to the Santa Fe Environmental Bureau office and provide a copy to the appropriate NMOCD District Office.

7084  
Pit, Closed-Loop System, Below-Grade Tank, or  
Proposed Alternative Method Permit or Closure Plan Application

- Type of action: ☐ Permit of a pit, closed-loop system, below-grade tank, or proposed alternative method  
☒ Closure of a pit, closed-loop system, below-grade tank, or proposed alternative method  
☐ Modification to an existing permit  
☐ Closure plan only submitted for an existing permitted or non-permitted pit, closed-loop system, below-grade tank, or proposed alternative method

**Instructions: Please submit one application (Form C-144) per individual pit, closed-loop system, below-grade tank or alternative request**

Please be advised that approval of this request does not relieve the operator of liability should operations result in pollution of surface water, ground water or the environment. Nor does approval relieve the operator of its responsibility to comply with any other applicable governmental authority's rules, regulations or ordinances.

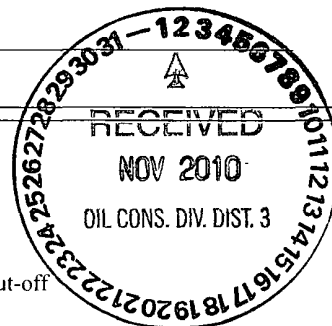
1. Operator: Williams Operating Co, LLC OGRID #: 120782  
Address: PO Box 640 / 721 S Main Aztec, NM 87410  
Facility or well name: Rosa Unit 19D  
API Number: 30-03930131 30 039 30781 OCD Permit Number: \_\_\_\_\_  
U/L or Qtr/Qtr L Section 24 Township 31N Range 6W County: Rio Arriba  
Center of Proposed Design: Latitude 36.88338N Longitude -107.42060W NAD: ☐ 1927 ☒ 1983  
Surface Owner: ☒ Federal ☐ State ☐ Private ☐ Tribal Trust or Indian Allotment

2. ☒ **Pit:** Subsection F or G of 19.15.17.11 NMAC  
Temporary: ☒ Drilling ☒ Workover  
☐ Permanent ☐ Emergency ☐ Cavitation ☐ P&A  
☒ Lined ☐ Unlined Liner type: Thickness 20 mil ☒ LLDPE ☐ HDPE ☐ PVC ☐ Other \_\_\_\_\_  
☒ String-Reinforced  
Liner Seams: ☒ Welded ☒ Factory ☐ Other \_\_\_\_\_ Volume: 20,000 bbl Dimensions: L 140' x W 70' x D 12'

3. ☐ **Closed-loop System:** Subsection H of 19.15.17.11 NMAC  
Type of Operation: ☐ P&A ☐ Drilling a new well ☐ Workover or Drilling (Applies to activities which require prior approval of a permit or notice of intent)  
☐ Drying Pad ☐ Above Ground Steel Tanks ☐ Haul-off Bins ☐ Other \_\_\_\_\_  
☐ Lined ☐ Unlined Liner type: Thickness \_\_\_\_\_ mil ☐ LLDPE ☐ HDPE ☐ PVC ☐ Other \_\_\_\_\_  
Liner Seams: ☐ Welded ☐ Factory ☐ Other \_\_\_\_\_

4. ☐ **Below-grade tank:** Subsection I of 19.15.17.11 NMAC  
Volume: \_\_\_\_\_ bbl Type of fluid: \_\_\_\_\_  
Tank Construction material: \_\_\_\_\_  
☐ Secondary containment with leak detection ☐ Visible sidewalls, liner, 6-inch lift and automatic overflow shut-off  
☐ Visible sidewalls and liner ☐ Visible sidewalls only ☐ Other \_\_\_\_\_  
Liner type: Thickness \_\_\_\_\_ mil ☐ HDPE ☐ PVC ☐ Other \_\_\_\_\_

5. ☐ **Alternative Method:**  
Submittal of an exception request is required. Exceptions must be submitted to the Santa Fe Environmental Bureau office for consideration of approval.



6.

**Fencing:** Subsection D of 19.15.17.11 NMAC (*Applies to permanent pits, temporary pits, and below-grade tanks*)

- ☐ Chain link, six feet in height, two strands of barbed wire at top (*Required if located within 1000 feet of a permanent residence, school, hospital, institution or church*)
- ☐ Four foot height, four strands of barbed wire evenly spaced between one and four feet
- ☒ Alternate. Please specify As per BLM and/or NM Dept of Game and Fish Specifications

7.

**Netting:** Subsection E of 19.15.17.11 NMAC (*Applies to permanent pits and permanent open top tanks*)

- ☐ Screen ☐ Netting ☐ Other \_\_\_\_\_
- ☐ Monthly inspections (If netting or screening is not physically feasible)

8.

**Signs:** Subsection C of 19.15.17.11 NMAC

- ☐ 12"x 24", 2" lettering, providing Operator's name, site location, and emergency telephone numbers
- ☒ Signed in compliance with 19.15.3.103 NMAC

9.

**Administrative Approvals and Exceptions:**

Justifications and/or demonstrations of equivalency are required. Please refer to 19.15.17 NMAC for guidance.

**Please check a box if one or more of the following is requested, if not leave blank:**

- ☐ Administrative approval(s): Requests must be submitted to the appropriate division district or the Santa Fe Environmental Bureau office for consideration of approval.
- ☐ Exception(s): Requests must be submitted to the Santa Fe Environmental Bureau office for consideration of approval.

10.

**Siting Criteria (regarding permitting):** 19.15.17.10 NMAC

**Instructions:** *The applicant must demonstrate compliance for each siting criteria below in the application. Recommendations of acceptable source material are provided below. Requests regarding changes to certain siting criteria may require administrative approval from the appropriate district office or may be considered an exception which must be submitted to the Santa Fe Environmental Bureau office for consideration of approval. Applicant must attach justification for request. Please refer to 19.15.17.10 NMAC for guidance. Siting criteria does not apply to drying pads or above-grade tanks associated with a closed-loop system.*

Ground water is less than 50 feet below the bottom of the temporary pit, permanent pit, or below-grade tank. - NM Office of the State Engineer - iWATERS database search; USGS; Data obtained from nearby wells	<input type="checkbox"/> Yes <input checked="" type="checkbox"/> No
Within 300 feet of a continuously flowing watercourse, or 200 feet of any other significant watercourse or lakebed, sinkhole, or playa lake (measured from the ordinary high-water mark). - Topographic map; Visual inspection (certification) of the proposed site	<input type="checkbox"/> Yes <input checked="" type="checkbox"/> No
Within 300 feet from a permanent residence, school, hospital, institution, or church in existence at the time of initial application. ( <i>Applies to temporary, emergency, or cavitation pits and below-grade tanks</i> ) - Visual inspection (certification) of the proposed site; Aerial photo; Satellite image	<input type="checkbox"/> Yes <input checked="" type="checkbox"/> No <input type="checkbox"/> NA
Within 1000 feet from a permanent residence, school, hospital, institution, or church in existence at the time of initial application. ( <i>Applies to permanent pits</i> ) - Visual inspection (certification) of the proposed site; Aerial photo, Satellite image	<input type="checkbox"/> Yes <input type="checkbox"/> No <input checked="" type="checkbox"/> NA
Within 500 horizontal feet of a private, domestic fresh water well or spring that less than five households use for domestic or stock watering purposes, or within 1000 horizontal feet of any other fresh water well or spring, in existence at the time of initial application. - NM Office of the State Engineer - iWATERS database search; Visual inspection (certification) of the proposed site	<input type="checkbox"/> Yes <input checked="" type="checkbox"/> No
Within incorporated municipal boundaries or within a defined municipal fresh water well field covered under a municipal ordinance adopted pursuant to NMSA 1978, Section 3-27-3, as amended. - Written confirmation or verification from the municipality; Written approval obtained from the municipality	<input type="checkbox"/> Yes <input checked="" type="checkbox"/> No
Within 500 feet of a wetland. - US Fish and Wildlife Wetland Identification map; Topographic map; Visual inspection (certification) of the proposed site	<input type="checkbox"/> Yes <input checked="" type="checkbox"/> No
Within the area overlying a subsurface mine. - Written confirmation or verification or map from the NM EMNRD-Mining and Mineral Division	<input type="checkbox"/> Yes <input checked="" type="checkbox"/> No
Within an unstable area. - Engineering measures incorporated into the design; NM Bureau of Geology & Mineral Resources; USGS; NM Geological Society; Topographic map	<input type="checkbox"/> Yes <input checked="" type="checkbox"/> No
Within a 100-year floodplain. - FEMA map	<input type="checkbox"/> Yes <input checked="" type="checkbox"/> No

11.

**Temporary Pits, Emergency Pits, and Below-grade Tanks Permit Application Attachment Checklist:** Subsection B of 19.15.17.9 NMAC**Instructions:** Each of the following items must be attached to the application. Please indicate, by a check mark in the box, that the documents are attached.

- ☒ Hydrogeologic Report (Below-grade Tanks) - based upon the requirements of Paragraph (4) of Subsection B of 19.15.17.9 NMAC
- ☒ Hydrogeologic Data (Temporary and Emergency Pits) - based upon the requirements of Paragraph (2) of Subsection B of 19.15.17.9 NMAC
- ☒ Siting Criteria Compliance Demonstrations - based upon the appropriate requirements of 19.15.17.10 NMAC
- ☒ Design Plan - based upon the appropriate requirements of 19.15.17.11 NMAC
- ☒ Operating and Maintenance Plan - based upon the appropriate requirements of 19.15.17.12 NMAC
- ☒ Closure Plan (Please complete Boxes 14 through 18, if applicable) - based upon the appropriate requirements of Subsection C of 19.15.17.9 NMAC and 19.15.17.13 NMAC

☐ Previously Approved Design (attach copy of design)      API Number: \_\_\_\_\_ or Permit Number: \_\_\_\_\_

12.

**Closed-loop Systems Permit Application Attachment Checklist:** Subsection B of 19.15.17.9 NMAC**Instructions:** Each of the following items must be attached to the application. Please indicate, by a check mark in the box, that the documents are attached.

- ☐ Geologic and Hydrogeologic Data (only for on-site closure) - based upon the requirements of Paragraph (3) of Subsection B of 19.15.17.9
- ☐ Siting Criteria Compliance Demonstrations (only for on-site closure) - based upon the appropriate requirements of 19.15.17.10 NMAC
- ☐ Design Plan - based upon the appropriate requirements of 19.15.17.11 NMAC
- ☐ Operating and Maintenance Plan - based upon the appropriate requirements of 19.15.17.12 NMAC
- ☐ Closure Plan (Please complete Boxes 14 through 18, if applicable) - based upon the appropriate requirements of Subsection C of 19.15.17.9 NMAC and 19.15.17.13 NMAC

☐ Previously Approved Design (attach copy of design)      API Number: \_\_\_\_\_

☐ Previously Approved Operating and Maintenance Plan      API Number: \_\_\_\_\_ (Applies only to closed-loop system that use above ground steel tanks or haul-off bins and propose to implement waste removal for closure)

13.

**Permanent Pits Permit Application Checklist:** Subsection B of 19.15.17.9 NMAC**Instructions:** Each of the following items must be attached to the application. Please indicate, by a check mark in the box, that the documents are attached.

- ☐ Hydrogeologic Report - based upon the requirements of Paragraph (1) of Subsection B of 19.15.17.9 NMAC
- ☐ Siting Criteria Compliance Demonstrations - based upon the appropriate requirements of 19.15.17.10 NMAC
- ☐ Climatological Factors Assessment
- ☐ Certified Engineering Design Plans - based upon the appropriate requirements of 19.15.17.11 NMAC
- ☐ Dike Protection and Structural Integrity Design - based upon the appropriate requirements of 19.15.17.11 NMAC
- ☐ Leak Detection Design - based upon the appropriate requirements of 19.15.17.11 NMAC
- ☐ Liner Specifications and Compatibility Assessment - based upon the appropriate requirements of 19.15.17.11 NMAC
- ☐ Quality Control/Quality Assurance Construction and Installation Plan
- ☐ Operating and Maintenance Plan - based upon the appropriate requirements of 19.15.17.12 NMAC
- ☐ Freeboard and Overtopping Prevention Plan - based upon the appropriate requirements of 19.15.17.11 NMAC
- ☐ Nuisance or Hazardous Odors, including H<sub>2</sub>S, Prevention Plan
- ☐ Emergency Response Plan
- ☐ Oil Field Waste Stream Characterization
- ☐ Monitoring and Inspection Plan
- ☐ Erosion Control Plan
- ☐ Closure Plan - based upon the appropriate requirements of Subsection C of 19.15.17.9 NMAC and 19.15.17.13 NMAC

14.

**Proposed Closure:** 19.15.17.13 NMAC**Instructions:** Please complete the applicable boxes, Boxes 14 through 18, in regards to the proposed closure plan.

Type: ☒ Drilling ☒ Workover ☐ Emergency ☐ Cavitation ☐ P&A ☐ Permanent Pit ☐ Below-grade Tank ☐ Closed-loop System

☐ Alternative

Proposed Closure Method: ☐ Waste Excavation and Removal

☐ Waste Removal (Closed-loop systems only)

☒ On-site Closure Method (Only for temporary pits and closed-loop systems)

☐ In-place Burial ☐ On-site Trench Burial

☐ Alternative Closure Method (Exceptions must be submitted to the Santa Fe Environmental Bureau for consideration)

15.

**Waste Excavation and Removal Closure Plan Checklist:** (19.15.17.13 NMAC) **Instructions:** Each of the following items must be attached to the closure plan. Please indicate, by a check mark in the box, that the documents are attached.

- ☐ Protocols and Procedures - based upon the appropriate requirements of 19.15.17.13 NMAC
- ☐ Confirmation Sampling Plan (if applicable) - based upon the appropriate requirements of Subsection F of 19.15.17.13 NMAC
- ☐ Disposal Facility Name and Permit Number (for liquids, drilling fluids and drill cuttings)
- ☐ Soil Backfill and Cover Design Specifications - based upon the appropriate requirements of Subsection H of 19.15.17.13 NMAC
- ☐ Re-vegetation Plan - based upon the appropriate requirements of Subsection I of 19.15.17.13 NMAC
- ☐ Site Reclamation Plan - based upon the appropriate requirements of Subsection G of 19.15.17.13 NMAC

16.

**Waste Removal Closure For Closed-loop Systems That Utilize Above Ground Steel Tanks or Haul-off Bins Only:** (19.15.17.13.D NMAC)

**Instructions:** Please identify the facility or facilities for the disposal of liquids, drilling fluids and drill cuttings. Use attachment if more than two facilities are required.

Disposal Facility Name: \_\_\_\_\_ Disposal Facility Permit Number: \_\_\_\_\_

Disposal Facility Name: \_\_\_\_\_ Disposal Facility Permit Number: \_\_\_\_\_

Will any of the proposed closed-loop system operations and associated activities occur on or in areas that *will not* be used for future service and operations?

☐ Yes (If yes, please provide the information below) ☐ No

*Required for impacted areas which will not be used for future service and operations:*

☐ Soil Backfill and Cover Design Specifications - based upon the appropriate requirements of Subsection H of 19.15.17.13 NMAC

☐ Re-vegetation Plan - based upon the appropriate requirements of Subsection I of 19.15.17.13 NMAC

☐ Site Reclamation Plan - based upon the appropriate requirements of Subsection G of 19.15.17.13 NMAC

17.

**Siting Criteria (regarding on-site closure methods only):** 19.15.17.10 NMAC

**Instructions:** Each siting criteria requires a demonstration of compliance in the closure plan. Recommendations of acceptable source material are provided below. Requests regarding changes to certain siting criteria may require administrative approval from the appropriate district office or may be considered an exception which must be submitted to the Santa Fe Environmental Bureau office for consideration of approval. Justifications and/or demonstrations of equivalency are required. Please refer to 19.15.17.10 NMAC for guidance.

Ground water is less than 50 feet below the bottom of the buried waste.

- NM Office of the State Engineer - iWATERS database search; USGS; Data obtained from nearby wells

☐ Yes ☒ No  
☐ NA

Ground water is between 50 and 100 feet below the bottom of the buried waste

- NM Office of the State Engineer - iWATERS database search; USGS; Data obtained from nearby wells

☐ Yes ☐ No  
☐ NA

Ground water is more than 100 feet below the bottom of the buried waste.

- NM Office of the State Engineer - iWATERS database search; USGS; Data obtained from nearby wells

☒ Yes ☐ No  
☐ NA

Within 300 feet of a continuously flowing watercourse, or 200 feet of any other significant watercourse or lakebed, sinkhole, or playa lake (measured from the ordinary high-water mark).

- Topographic map; Visual inspection (certification) of the proposed site

☐ Yes ☒ No

Within 300 feet from a permanent residence, school, hospital, institution, or church in existence at the time of initial application.

- Visual inspection (certification) of the proposed site; Aerial photo; Satellite image

☐ Yes ☒ No

Within 500 horizontal feet of a private, domestic fresh water well or spring that less than five households use for domestic or stock watering purposes, or within 1000 horizontal feet of any other fresh water well or spring, in existence at the time of initial application.

- NM Office of the State Engineer - iWATERS database; Visual inspection (certification) of the proposed site

☐ Yes ☒ No

Within incorporated municipal boundaries or within a defined municipal fresh water well field covered under a municipal ordinance adopted pursuant to NMSA 1978, Section 3-27-3, as amended.

- Written confirmation or verification from the municipality; Written approval obtained from the municipality

☐ Yes ☒ No

Within 500 feet of a wetland.

- US Fish and Wildlife Wetland Identification map; Topographic map; Visual inspection (certification) of the proposed site

☐ Yes ☒ No

Within the area overlying a subsurface mine.

- Written confirmation or verification or map from the NM EMNRD-Mining and Mineral Division

☐ Yes ☒ No

Within an unstable area.

- Engineering measures incorporated into the design; NM Bureau of Geology & Mineral Resources; USGS; NM Geological Society; Topographic map

☐ Yes ☒ No

Within a 100-year floodplain.

- FEMA map

☐ Yes ☒ No

18.

**On-Site Closure Plan Checklist:** (19.15.17.13 NMAC) **Instructions:** Each of the following items must be attached to the closure plan. Please indicate, by a check mark in the box, that the documents are attached.

☒ Siting Criteria Compliance Demonstrations - based upon the appropriate requirements of 19.15.17.10 NMAC

☒ Proof of Surface Owner Notice - based upon the appropriate requirements of Subsection F of 19.15.17.13 NMAC

☐ Construction/Design Plan of Burial Trench (if applicable) based upon the appropriate requirements of 19.15.17.11 NMAC

☒ Construction/Design Plan of Temporary Pit (for in-place burial of a drying pad) - based upon the appropriate requirements of 19.15.17.11 NMAC

☒ Protocols and Procedures - based upon the appropriate requirements of 19.15.17.13 NMAC

☒ Confirmation Sampling Plan (if applicable) - based upon the appropriate requirements of Subsection F of 19.15.17.13 NMAC

☒ Waste Material Sampling Plan - based upon the appropriate requirements of Subsection F of 19.15.17.13 NMAC

☒ Disposal Facility Name and Permit Number (for liquids, drilling fluids and drill cuttings or in case on-site closure standards cannot be achieved)

☒ Soil Cover Design - based upon the appropriate requirements of Subsection H of 19.15.17.13 NMAC

☒ Re-vegetation Plan - based upon the appropriate requirements of Subsection I of 19.15.17.13 NMAC

☒ Site Reclamation Plan - based upon the appropriate requirements of Subsection G of 19.15.17.13 NMAC

19.

**Operator Application Certification:**

I hereby certify that the information submitted with this application is true, accurate and complete to the best of my knowledge and belief.

Name (Print): \_\_\_\_\_ Title: \_\_\_\_\_

Signature: \_\_\_\_\_ Date: \_\_\_\_\_

e-mail address: \_\_\_\_\_ Telephone: \_\_\_\_\_

20.

**OCD Approval:** ☐ Permit Application (including closure plan) ☒ Closure Plan (only) ☐ OCD Conditions (see attachment)

OCD Representative Signature: Jonell D. Kelly Approval Date: 9/02/2011

Title: Compliance Officer OCD Permit Number: \_\_\_\_\_

21.

**Closure Report (required within 60 days of closure completion):** Subsection K of 19.15.17.13 NMAC

*Instructions: Operators are required to obtain an approved closure plan prior to implementing any closure activities and submitting the closure report. The closure report is required to be submitted to the division within 60 days of the completion of the closure activities. Please do not complete this section of the form until an approved closure plan has been obtained and the closure activities have been completed.*

☒ Closure Completion Date: 8/27/10

22.

**Closure Method:**

☐ Waste Excavation and Removal ☒ On-Site Closure Method ☐ Alternative Closure Method ☐ Waste Removal (Closed-loop systems only)  
☐ If different from approved plan, please explain.

23.

**Closure Report Regarding Waste Removal Closure For Closed-loop Systems That Utilize Above Ground Steel Tanks or Haul-off Bins Only:**

*Instructions: Please identify the facility or facilities for where the liquids, drilling fluids and drill cuttings were disposed. Use attachment if more than two facilities were utilized.*

Disposal Facility Name: \_\_\_\_\_ Disposal Facility Permit Number: \_\_\_\_\_

Disposal Facility Name: \_\_\_\_\_ Disposal Facility Permit Number: \_\_\_\_\_

Were the closed-loop system operations and associated activities performed on or in areas that *will not* be used for future service and operations?

☐ Yes (If yes, please demonstrate compliance to the items below) ☐ No

*Required for impacted areas which will not be used for future service and operations:*

- ☐ Site Reclamation (Photo Documentation)  
☐ Soil Backfilling and Cover Installation  
☐ Re-vegetation Application Rates and Seeding Technique

24.

**Closure Report Attachment Checklist:** *Instructions: Each of the following items must be attached to the closure report. Please indicate, by a check mark in the box, that the documents are attached.*

- ☒ Proof of Closure Notice (surface owner and division)  
☒ Proof of Deed Notice (required for on-site closure)  
☒ Plot Plan (for on-site closures and temporary pits)  
☒ Confirmation Sampling Analytical Results (if applicable)  
☐ Waste Material Sampling Analytical Results (required for on-site closure)  
☒ Disposal Facility Name and Permit Number  
☒ Soil Backfilling and Cover Installation  
☒ Re-vegetation Application Rates and Seeding Technique  
☒ Site Reclamation (Photo Documentation)

On-site Closure Location: Latitude 36.88338 Longitude -107.42060 NAD: ☐ 1927 ☒ 1983

25.

**Operator Closure Certification:**

I hereby certify that the information and attachments submitted with this closure report is true, accurate and complete to the best of my knowledge and belief. I also certify that the closure complies with all applicable closure requirements and conditions specified in the approved closure plan.

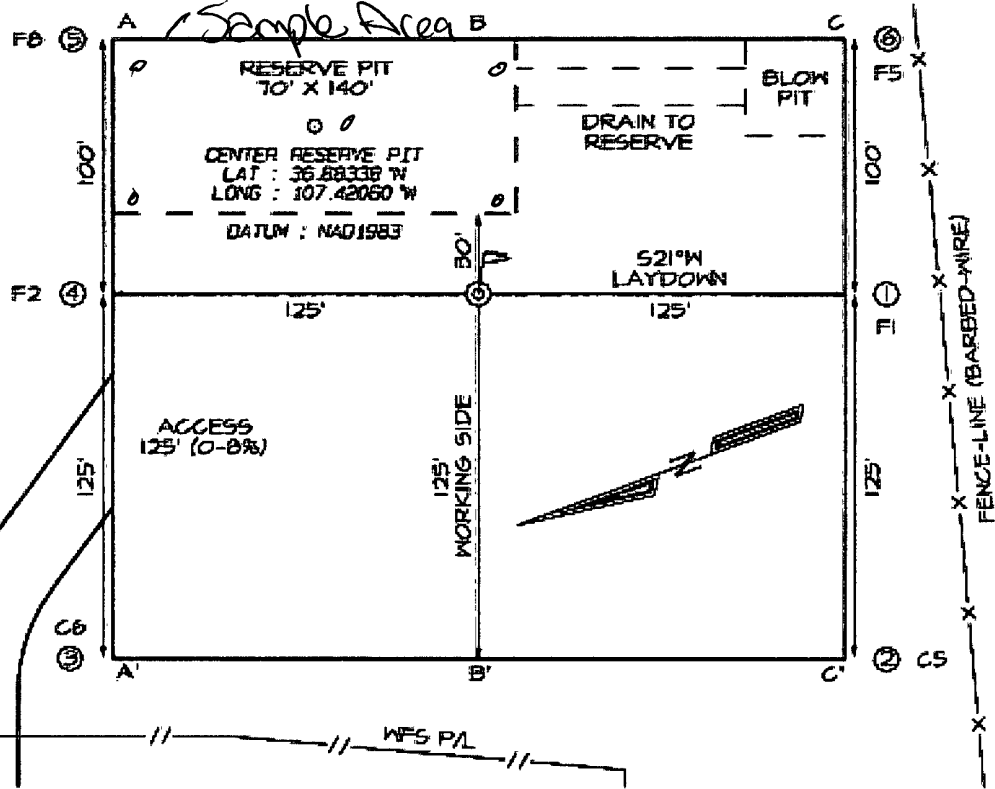
Name (Print): Vanessa Fields Title: EH&S Coordinator

Signature: Vanessa Fields Date: 10-29-10

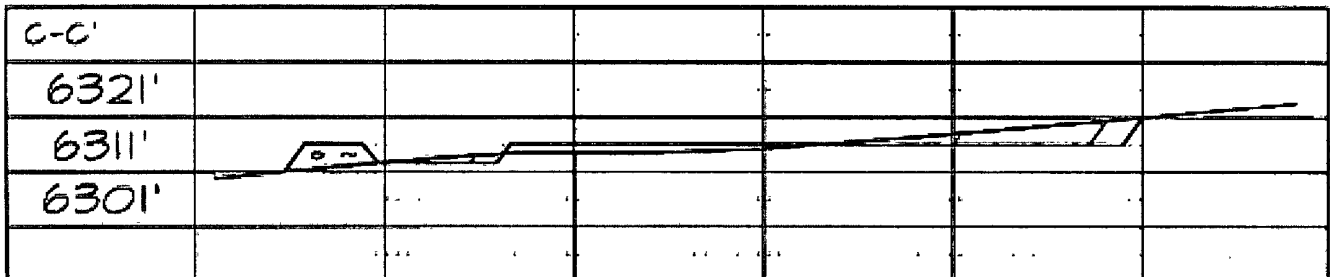
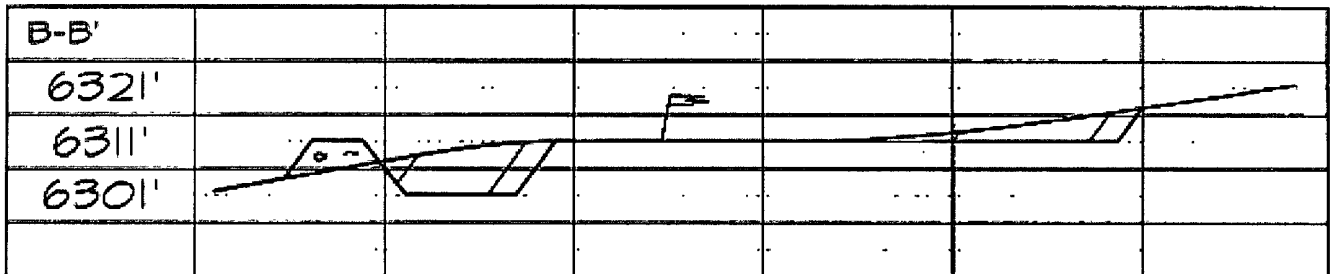
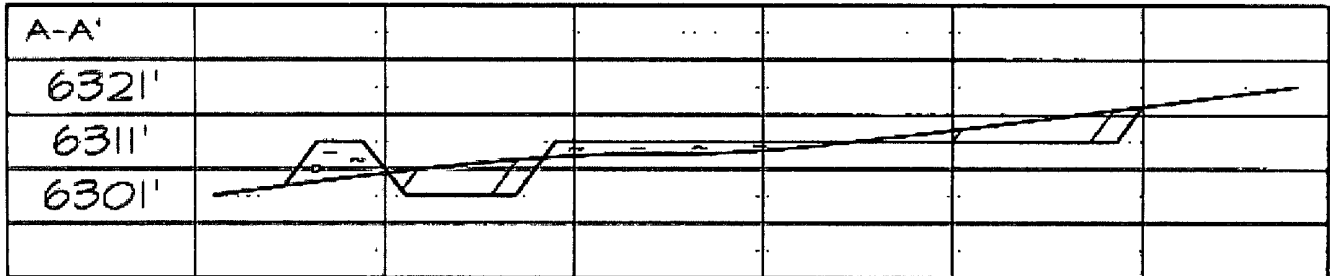
e-mail address: vanessa.fields@williams.com Telephone: 505-634-4209

**WILLIAMS PRODUCTION COMPANY ROSA UNIT #19D  
1980' FSL & 660' FWL, SECTION 24, T31N, R6W, NMPM  
RIO ARriba COUNTY, NEW MEXICO ELEVATION: 6311'**

**LATITUDE: 36.88330° N  
LONGITUDE: 107.42088° W  
DATUM: NAD1983**



Steel T-Picks have been set to define the Edge of Disturbance limits which are 80' offset from the edge of the staked wellpad.



FILENAME: B1624LT2

SHEET 2 OF 3

**NCE SURVEYS, INC.**

DRAWN BY: EDO

CHECKED BY: JCE

**Williams Production Co., LLC**  
**San Juan Basin: New Mexico Assets**  
Temporary Pit In-place Closure Report  
Drilling/Completion and Workover  
(Groundwater >100 feet bgs)

**Well:** Rosa Unit # 019  
**API No:** 30-03930131  
**Location:** L-S# 24#-T# 31 #N-R# 06#W, NMPM

In accordance with Rule 19.15.17.13 NMAC, the following plan describes the general in-place closure requirements of temporary pits on Williams Production Co, LLC (WPX) locations in the San Juan Basin of New Mexico. This is WPX's standard procedure for all temporary pits to be utilized for the drilling, completion and/or workovers of oil and gas wells operated by WPX. For those temporary pits which do not conform to this standard closure plan, a separate well/pit specific closure plan will be developed and utilized.

All closure activities will include proper documentation and will be submitted to OCD within 60 days of the pit closure on a Closure Report using Division Form C-144. The Report will include the following:

- Details on Capping and Covering, where applicable
- Plot Plan (Pit Diagram)
- Inspection reports
- Sampling Results
- Division Form C-105: *WELL COMPLETION OR RECOMPLETION REPORT AND LOG*
- Copy of Deed Notice filed with the County Clerk (format to meet County requirements)  
A deed notice is not required on state, federal or tribal land according to NMOCD FAQ dated October 30, 2008 and posted on the NMOCD website.

**General Plan Requirements:**

1. All free standing liquids will be removed from the pit at the start of the closure process. Liquids will be removed in a manner that the appropriate District Office approves including; recycled, reused, reclaimed, evaporated, and/or disposed of in a Division-approved facility. Once all free liquids are removed, the sludge will be stabilized by one of the following methods depending on equipment availability: blending with clean stockpiled soils or dewatering using a Bowl Decanter Centrifuge then blending with clean stockpiles soils.  
To the extent practical, free liquids were pulled from the reserve pit following the completion rig off. Haul dates was (9/4/2010) to Rosa Unit SWD #001 (Order: SWD-916, API: 3003927055)
2. The preferred method of closure for all temporary pits will be on-site closure by in-place burial, provided all the criteria in 19.15.17.13.B are met.  
On-site burial plan for this location was approved by the Aztec District Office on (7/7/2009).
3. The surface owner shall be notified of WPX's proposed closure plan using a means that provides proof of notice (i.e. certified mail/return receipt requested)  
Williams notified the SMA of its intent to use a temporary pit and onsite burial in the Surface Use Plan in the well APD. The SMA was notified by email see attached. No return receipt required per BLM:FFO/NMOCD MOU dated 5/4/09.
4. Within six months of the "rig-off" status occurring WPX will ensure that the temporary pit is covered, recontoured and reseeded in progress.  
Drill rig-off (9/9/2009). Request for transfer to completion rig submitted (11/02/2009) to OCD Aztec District Office, Completion rig-off (5/21/2010) Pit covered (7/31/10). Pit area along with unused portions of well pad to be interim reclaimed in accordance with Surface Management Agency requirements in APD-COAs and per BLM:FFO/NMOCD MOU dated 5/4/09.
5. Notice of Closure will be given to the Aztec District office between 72 hours and one week of the scheduled closure via email or phone. The notification of closure will include the following:
  - a. Operators Name (WPX)
  - b. Well Name and API Number
  - c. Location (USTR)

The Aztec District Office of NMOCD was notified by email using a format acceptable to the District. Copies of the notification from Abode Contractors on (8/16/2010) is attached.

6. The pit liner shall be removed above "mud level" after stabilization. Removal of the liner will consist of manually or mechanically cutting the liner at the mud level and removing all remaining liner. Care will be taken to remove "all" of the liner (i.e. anchored material). All excessive liner will be disposed of at a licensed disposal facility (probably San Juan Regional Landfill operated by Waste Management under NMED Permit SWM-052426).

The liner to the temporary pit was removed above the "mud level" once stabilized. Removal of the liner consisted of manually cutting the liner and removing all remaining liner material above the "mud level" including the anchor material. All excessive liner was disposed of at the San Juan Regional Landfill operated by Waste Management under NMED Permit SWM-052426.

7. Solidification of the remaining pit contents shall be achieved by mixing non-waste containing, earthen material. The solidification process will be accomplished use a combination of natural drying and mechanical mixing. Pit contents will be mixed with non-waste, earthen material to a consistency that is deemed safe and stable. The mixing ratio shall not exceed 3 parts non-waste to 1 part pit contents.

Following removal of free liquids, the pit contents were mixed with non-waste containing, earthen material in order to achieve appropriate solidification and a consistency that was deemed safe and stable. The solidification process was accomplished using a combination of natural drying, a Bowl Decanter Centrifuge, and mechanically mixing using a dozer and trackhoe. The mixing ration was approximately 2.5-3 parts native soil to 1 part pit contents. Solidification was completed (8/15/2010).

8. A five-point composite sample will be taken of the pit using sampling tools and all samples tested per 19.15.17.13(B)(1)(b) NMAC. In the event that the criteria are not met (See Table 1), all contents will be handled per 19.15.17.13(B)(1)(a) (i.e. dig and haul to a Division-approved facility). Approval to haul will be requested of the Aztec District office prior to initiation.

A five-point composite sampling was taken of the pit area using sampling tools and the sample was tested per 19.15.17.13(B)(1)(b) NMAC. Results are shown in Table 1 and lab reports are attached.

Table 1: Closure Criteria for Temporary Pits in Non-sensitive Areas with Groundwater >100 bgs.

Components	Testing Methods	Limits (mg/Kg)	Pit (mg/Kg)
Benzene	EPA SW-846 Method 8021B or 8260B	0.2	ND
BTEX	EPA SW-846 Method 8021B or 8260B	50	3.6
TPH	EPA SW-846 Method 418.1	2500	ND
GRO/DRO	EPA SW-846 Method 8015M (GRO/DRO)	500	ND
Chlorides	EPA SW-846 Method 300.1	500	30

9. Upon completion of solidification and testing, the pit area will be backfilled with non-waste earthen material compacted to native conditions to enable effective revegetation for successful evapotranspiration. A minimum of four feet of cover including replacement of one foot of suitable material to establish vegetation, or the background thickness of topsoil, whichever is greater.

Upon completion of solidification and testing, the pit area was backfilled with non-waste earthen material compacted to native conditions. A minimum of four feet of cover to the extent practical was achieved and the cover included just over a foot of topsoil suitable to establish vegetation.

10. Following cover, the site will be recontoured to meet the Surface Management Agency or surface owner requirements. Re-contouring will attempt to match fit, shape, line form, and texture of the surrounding geography. Re-shaping will include drainage control, prevent ponding, and minimize erosion. Natural drainages will be unimpeded and stormwater Best Management Practices (BMPs) will be used to aid in soil stabilization and protection surface water quality.

Following cover, Williams reestablished drainage and contours to approximately match previous topography meeting the Conditions of Approval in the APD and the direction offered by a BLM/USFS inspector. Cover and re-contouring were completed (8/24/10).

11. Notification will be sent to the Aztec District office when the reclaimed area is seeded. Williams will comply with Surface Management Agency reseeding requirements in the COAs of the APD for the referenced well, per BLM:FFO/NMOCD MOU dated 5/4/09.

12. WPX shall seed the disturbed areas the first growing season after the pit is covered. Seeding will be accomplished via drilling on the contour whenever practical, or by other Division-



approved methods. Vegetative cover will equal 70% of the native perennial vegetative cover (un-impacted) consisting of at least three native plant species, including at least one grass, but not including noxious weeds, and maintained that cover through two successive growing seasons. Repeat seeding or planting will be continued until successful vegetative growth occurs. *Note: WPX assumes the seeding stipulations including mix and seeding methods specified by the Surface Management Agency (BLM, BOR, USFS, Tribal, etc.) or Land owner as part of a surface use agreement or APD are Division-approved methods unless notified by the Division of their unacceptability.*

Williams will comply with Surface Management Agency reseeding requirements in the COAs of the APD for the referenced well, per BLM:FFO/NMOCD MOU dated 5/4/09.

13. The temporary pit will be located with a steel marker, no less than four inches in diameter, cemented in a hole three feet deep in the center of the onsite burial upon the abandonment of all wells on the pad. The marker will be flush with the ground to allow access of the active well pad and for safety concerns. The marker will include a threaded collar to be used for future abandonment. The top of the marker will contain a welded steel 12" square plate that indicates the onsite burial of the temporary pit. The plate will be easily removable and a four-foot tall riser will be threaded into the top of the collar marker and welded around the base with the operations information at the time of all wells on the pad abandoned. The information will include Operator Name, Lease Name, Well Name, and number, USTR, and an indicator that the marker is an onsite pit burial location.

The temporary pit was located with a steel marker meeting the above listed specifications. The marker has the following information welded for future reference: Williams Production, NMSF-078768, S24-T31N-R06W-F, "Pit Burial" (photo attached). Steel marker set (9/7/2010).



**EPA METHOD 8015 Modified  
Nonhalogenated Volatile Organics  
Total Petroleum Hydrocarbons**

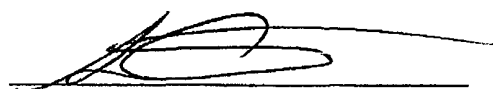
Client:	WPX	Project #:	04108-0136
Sample ID:	Reserve Pit	Date Reported:	08-31-10
Laboratory Number:	55702	Date Sampled:	08-25-10
Chain of Custody No:	10279	Date Received:	08-27-10
Sample Matrix:	Soil	Date Extracted:	08-30-10
Preservative:	Cool	Date Analyzed:	08-31-10
Condition:	Intact	Analysis Requested:	8015 TPH

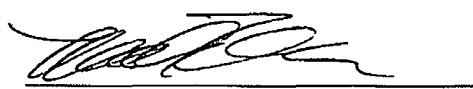
Parameter	Concentration (mg/Kg)	Det. Limit (mg/Kg)
Gasoline Range (C5 - C10)	ND	0.2
Diesel Range (C10 - C28)	ND	0.1
Total Petroleum Hydrocarbons	ND	0.2

ND - Parameter not detected at the stated detection limit.

References: Method 8015B, Nonhalogenated Volatile Organics, Test Methods for Evaluating Solid Waste, SW-846, USEPA, December 1996.

Comments: Rosa Unit #19D

  
Analyst

  
Review



EPA Method 8015 Modified  
Nonhalogenated Volatile Organics  
Total Petroleum Hydrocarbons

Quality Assurance Report

Client:	QA/QC	Project #:	N/A
Sample ID:	08-31-10 QA/QC	Date Reported:	08-31-10
Laboratory Number:	55689	Date Sampled:	N/A
Sample Matrix:	Methylene Chloride	Date Received:	N/A
Preservative:	N/A	Date Analyzed:	08-31-10
Condition:	N/A	Analysis Requested:	TPH

	I-Cal Date	I-Cal RF	C-Cal RF	% Difference	Accept Range
Gasoline Range C5 - C10	08-31-10	9.9960E+002	1.0000E+003	0.04%	0 - 15%
Diesel Range C10 - C28	08-31-10	9.9960E+002	1.0000E+003	0.04%	0 - 15%

Blank Conc. (mg/L - mg/Kg)	Concentration	Detection Limit
Gasoline Range C5 - C10	ND	0.2
Diesel Range C10 - C28	ND	0.1
Total Petroleum Hydrocarbons	ND	0.2

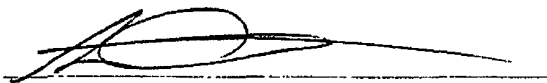
Duplicate Conc. (mg/Kg)	Sample	Duplicate	% Difference	Accept Range
Gasoline Range C5 - C10	1.2	1.2	0.0%	0 - 30%
Diesel Range C10 - C28	2.8	3.0	7.0%	0 - 30%

Spike Conc. (mg/Kg)	Sample	Spike Added	Spike Result	% Recovery	Accept Range
Gasoline Range C5 - C10	1.2	250	255	101%	75 - 125%
Diesel Range C10 - C28	2.8	250	256	101%	75 - 125%

ND - Parameter not detected at the stated detection limit.

References: Method 8015B, Nonhalogenated Volatile Organics, Test Methods for Evaluating Solid Waste, SW-846, USEPA, December 1996.

Comments: QA/QC for Samples 55689, 55701-55705, 55715-55718

  
Analyst

  
Review



EPA METHOD 8021  
AROMATIC VOLATILE ORGANICS

Client:	WPX	Project #:	04108-0136
Sample ID:	Reserve Pit	Date Reported:	08-31-10
Laboratory Number:	55702	Date Sampled:	08-25-10
Chain of Custody:	10279	Date Received:	08-27-10
Sample Matrix:	Soil	Date Analyzed:	08-31-10
Preservative:	Cool	Date Extracted:	08-30-10
Condition:	Intact	Analysis Requested:	BTEX

Parameter	Concentration (ug/Kg)	Det. Limit (ug/Kg)
Benzene	ND	0.9
Toluene	ND	1.0
Ethylbenzene	ND	1.0
p,m-Xylene	2.5	1.2
o-Xylene	1.1	0.9
Total BTEX	3.6	


ND - Parameter not detected at the stated detection limit.

Surrogate Recoveries:	Parameter	Percent Recovery
	Fluorobenzene	99.1 %
	1,4-difluorobenzene	100 %
	Bromochlorobenzene	99.1 %

References: Method 5030B, Purge-and-Trap, Test Methods for Evaluating Solid Waste, SW-846, USEPA, December 1996.

Method 8021B, Aromatic Volatile Organics, Test Methods for Evaluating Solid Waste, SW-846, USEPA, December 1996.

Comments: Rosa Unit #19D

  
Analyst

  
Review



EPA METHOD 8021  
AROMATIC VOLATILE ORGANICS

Client:	N/A	Project #:	N/A
Sample ID:	0831BBLK QA/QC	Date Reported:	08-31-10
Laboratory Number:	55689	Date Sampled:	N/A
Sample Matrix:	Soil	Date Received:	N/A
Preservative:	N/A	Date Analyzed:	08-31-10
Condition:	N/A	Analysis:	BTEX

Calibration and Detection Limits (ug/L)	I-Cal RF	C-Cal RF	%Diff	Blank Conc	Detect Limit
		Accept Range 0 - 15%			
Benzene	7.4643E+005	7.4793E+005	0.2%	ND	0.1
Toluene	8.2496E+005	8.2661E+005	0.2%	ND	0.1
Ethylbenzene	7.4852E+005	7.5002E+005	0.2%	ND	0.1
p,m-Xylene	1.8052E+006	1.8089E+006	0.2%	ND	0.1
o-Xylene	6.7051E+005	6.7185E+005	0.2%	ND	0.1

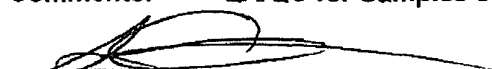
Duplicate Conc. (ug/Kg)	Sample	Duplicate	%Diff	Accept Range	Detect Limit
Benzene	ND	ND	0.0%	0 - 30%	0.9
Toluene	ND	ND	0.0%	0 - 30%	1.0
Ethylbenzene	3.4	3.0	11.8%	0 - 30%	1.0
p,m-Xylene	45.9	47.0	2.4%	0 - 30%	1.2
o-Xylene	13.3	13.3	0.0%	0 - 30%	0.9


Spike Conc. (ug/Kg)	Sample	Amount Spiked	Spiked Sample	%Recovery	Accept Range
Benzene	ND	50.0	50.2	100%	39 - 150
Toluene	ND	50.0	50.6	101%	46 - 148
Ethylbenzene	3.4	50.0	50.3	100%	32 - 160
p,m-Xylene	45.9	100	104	99.0%	46 - 148
o-Xylene	13.3	50.0	51.5	100%	46 - 148

ND - Parameter not detected at the stated detection limit.

References: Method 5030B, Purge-and-Trap, Test Methods for Evaluating Solid Waste, SW-846, USEPA, December 1996.  
Method 8021B, Aromatic and Halogenated Volatiles by Gas Chromatography Using Photoionization and/or Electrolytic Conductivity Detectors, SW-846, USEPA December 1996.

Comments: QA/QC for Samples 55689, 55701-55705, 55715-55718

  
Analyst

  
Review



EPA METHOD 418.1  
TOTAL PETROLEUM  
HYDROCARBONS

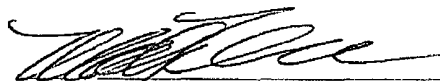
Client:	WPX	Project #:	04108-0136
Sample ID:	Reserve Pit	Date Reported:	08-30-10
Laboratory Number:	55702	Date Sampled:	08-25-10
Chain of Custody No:	10279	Date Received:	08-27-10
Sample Matrix:	Soil	Date Extracted:	08-30-10
Preservative:	Cool	Date Analyzed:	08-30-10
Condition:	Intact	Analysis Needed:	TPH-418.1

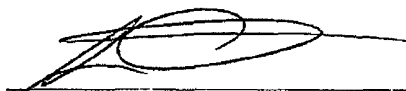
Parameter	Concentration (mg/kg)	Det. Limit (mg/kg)
Total Petroleum Hydrocarbons	ND	17.1

ND = Parameter not detected at the stated detection limit.

References: Method 418.1, Petroleum Hydrocarbons, Total Recoverable, Chemical Analysis of Water and Waste, USEPA Storet No. 4551, 1978.

Comments: Rosa Unit #19D

  
Analyst

  
Review



EPA METHOD 418.1  
TOTAL PETROLEUM  
HYDROCARBONS  
QUALITY ASSURANCE REPORT

Client:	QA/QC	Project #:	N/A
Sample ID:	QA/QC	Date Reported:	08-30-10
Laboratory Number:	08-30-TPH.QA/QC 55703	Date Sampled:	N/A
Sample Matrix:	Freon-113	Date Analyzed:	08-30-10
Preservative:	N/A	Date Extracted:	08-30-10
Condition:	N/A	Analysis Needed:	TPH

Calibration	I-Cal Date	C-Cal Date	I-Cal RF:	C-Cal RF:	% Difference	Accept. Range
	07-29-10	08-30-10	1,860	1,770	4.8%	+/- 10%

Blank Conc. (mg/Kg)	Concentration	Detection Limit
TPH	ND	17.1


Duplicate Conc. (mg/Kg)	Sample	Duplicate	% Difference	Accept. Range
TPH	30.5	29.0	4.9%	+/- 30%

Spike Conc. (mg/Kg)	Sample	Spike Added	Spike Result	% Recovery	Accept Range
TPH	30.5	2,000	2,010	99.0%	80 - 120%

ND = Parameter not detected at the stated detection limit.

References: Method 418.1, Petroleum Hydrocarbons, Total Recoverable, Chemical Analysis of Water and Waste, USEPA Storet No. 4551, 1978.

Comments: QA/QC for Samples 55674, 55676, 55688, 55701-55705

  
Analyst

  
Review


Client:	WPX	Project #:	04108-0136
Sample ID:	Reserve Pit	Date Reported:	08-30-10
Lab ID#:	55702	Date Sampled:	08-25-10
Sample Matrix:	Soil	Date Received:	08-27-10
Preservative:	Cool	Date Analyzed:	08-30-10
Condition:	Intact	Chain of Custody:	10279

Parameter	Concentration (mg/Kg)
-----------	-----------------------

**Total Chloride****30**

Reference: U.S.E.P.A., 4500B, "Methods for Chemical Analysis of Water and Wastes", 1983.  
Standard Methods For The Examination of Water And Waste Water", 18th ed., 1992.

Comments: **Rosa Unit #19D**

  
\_\_\_\_\_  
Analyst  
\_\_\_\_\_  
Review



10279

ACCENT Printing • Form 28-0807

## Fields, Vanessa

---

**From:** Glenn Shelby [glenn@adobecontractorsinc.com]  
**Sent:** Monday, August 16, 2010 8:57 AM  
**To:** Brandon Powell  
**Cc:** Fields, Vanessa; Lane, Myke; Meador, Tasha; Johnny Stinson  
**Subject:** Williams cleanups, Rosa Unit 19D

On August 18th we will move equipment and start the cleanup on the Rosa Unit 19D. If you have any questions call me.

Thanks,  
Glenn Shelby  
Field Foreman  
Adobe Contractors, Inc.  
Cell: 320-7187  
[glenn@adobecontractorsinc.com](mailto:glenn@adobecontractorsinc.com)

## Fields, Vanessa

---

**From:** Glenn Shelby [glenn@adobecontractorsinc.com]  
**Sent:** Monday, August 16, 2010 8:55 AM  
**To:** Mark Kelly; Bill Liess; Bob Switzer; Randy Mckee; Sherrie Landon; Fields, Vanessa  
**Cc:** Fields, Vanessa; Lane, Myke; Meador, Tasha; Johnny Stinson  
**Subject:** Williams cleanups, Rosa Unit 19D

On August 18th we will move equipment and start the cleanup on the Rosa Unit 19D. If you have any questions call me.

Thanks,  
Glenn Shelby  
Field Foreman  
Adobe Contractors, Inc.  
Cell: 320-7187  
[glenn@adobecontractorsinc.com](mailto:glenn@adobecontractorsinc.com)

UNITED STATES  
DEPARTMENT OF THE INTERIOR  
BUREAU OF LAND MANAGEMENT

SUBMIT IN  
DUPLICATE

(See other instructions on  
reverse side)

FORM APPROVED  
OMB NO 1004-0137  
Expires February 28, 1995

WELL COMPLETION OR RECOMPLETION REPORT AND LOG\*

1a	TYPE OF WELL	1 OIL WELL	<input checked="" type="checkbox"/> GAS WELL	2 DRY	3 OTHER	7 UNIT AGREEMENT NAME	Rosa Unit
b	TYPE OF COMPLETION	<input checked="" type="checkbox"/> NEW WELL	WORKOVER	DEEPEN	PLUG BACK	DIFF RESVR	OTHER
2	NAME OF OPERATOR					8 FARM OR LEASE NAME, WELL NO	Rosa Unit #019D
3	ADDRESS AND TELEPHONE NO					9 API WELL NO	30-039-30781
4	LOCATION OF WELL (Report location clearly and in accordance with any State requirements)* At Surface: 1980' FSL & 660' FWL, sec 24, T31N, R6W At top production interval reported below : 803' FSL & 694' FWL, sec 24, T31N, R6W At total depth: Same					10. FIELD AND POOL, OR WILDCAT	Basin Dakota
						11 SEC. T, R, M, OR BLOCK AND SURVEY OR AREA	Sec 24, T31N, R6W
						12 COUNTY OR	13 STATE
						Rio Arriba	New Mexico
15. DATE	16 DATE T D	17 DATE COMPLETED (READY TO PRODUCE)	18 ELEVATIONS (DK, RKB, RT, GR, ETC)*		19 ELEVATION CASINGHEAD		
SPUDDED	REACHED		6311' GR				
8-25-09	9-8-09	11/16/09					
20 TOTAL DEPTH, MD & TVD	21 PLUG, BACK T D, MD & TVD	22 IF MULTICOMP, HOW MANY	23 INTERVALS DRILLED BY	ROTARY TOOLS	CABLE TOOLS		
8164' MD / 7944' TVD	8157' MD / 7937' TVD	3*		x			
24 PRODUCING INTERVAL(S), OF THIS COMPLETION - TOP, BOTTOM, NAME (MD AND TVD)*						25 WAS DIRECTIONAL SURVEY MADE	
BASIN DAKOTA: 8031' - 8149' MD						YES	
26 TYPE ELECTRIC AND OTHER LOGS RUN						27 WAS WELL CORED	
Array Induction, Compensated Gamma Ray-Density-Neutron, Temperature, Ultra Sonic Gas Detector and CBL						No	

28 CASING REPORT (Report all strings set in well)							
CASING SIZE/GRADE		WEIGHT, LB / FT	DEPTH SET (MD)	HOLE SIZE	TOP OF CEMENT, CEMENTING RECORD		AMOUNT PULLED
10-3/4", J-55		40 5#	313'	14-3/4"	300 SX - SURFACE		
7-5/8", K-55		26 4#	3862'	9-7/8"	590 SX - SURFACE		
5-1/2", N-80		17 0#	8164'	6-3/4"	360 SX - 3490' (CBL)		
29 LINER RECORD							
SIZE	TOP (MD)	BOTTOM (MD)	SACKS CEMENT*	SCREEN (MD)	SIZE	DEPTH SET (MD)	PACKER SET (MD)
					2.375", 4 7#, J-55 & N-80 EUE 8rd	8006'	none
31 PERFORATION RECORD (Interval, size, and number)				32 ACID, SHOT, FRACTURE, CEMENT SQUEEZE, ETC			
Dakota: Total of 78, 0 34" holes				DEPTH INTERVAL (MD)		AMOUNT AND KIND OF MATERIAL USED	
				8031' - 8149'		Fraced with 4971# 100 mesh BASF followed with 64,277# 40/70 mesh BASF	

33 PRODUCTION							
DATE OF FIRST PRODUCTION		PRODUCTION METHOD (Flowing, gas lift, pumping-size and type of pump)				WELL STATUS (PRODUCING OR SI)	
		Flowing				SI - waiting on tie-in	
DATE OF TEST	TESTED	CHOKE SIZE	PROD'N FOR TEST PERIOD	OIL - BBL	GAS - MCF	WATER - BBL	GAS-OIL RATIO
11/13/09	2 hr	32/64"					
FLOW TBG PRESS	CASING PRESSURE	CALCULATED 24-HOUR RATE		OIL - BBL	GAS - MCF	WATER - BBL	OIL GRAVITY-API (CORR)
0	400 lb				575 mcf/d		
34 DISPOSITION OF GAS (Sold, used for fuel, vented, etc.)						TEST WITNESSED BY	
non flaring						Weldon Huggins	

35 LIST OF ATTACHMENTS	SUMMARY OF POROUS ZONES, WELLBORE DIAGRAM, Directional EOW report
------------------------	---

36 I hereby certify that the foregoing and attached information is complete and correct as determined from all available records
--

SIGNED \_\_\_\_\_ TITLE Regulatory Specialist DATE 11/18/2009

UNITED STATES  
DEPARTMENT OF THE INTERIOR  
BUREAU OF LAND MANAGEMENT

SUBMIT IN  
DUPLICATE

(See other instructions on  
reverse side)

FORM APPROVED  
OMB NO 1004-0137  
Expires February 28, 1995

WELL COMPLETION OR RECOMPLETION REPORT AND LOG\*

1a	TYPE OF WELL	<input type="checkbox"/> OIL WELL	<input checked="" type="checkbox"/> GAS WELL	<input type="checkbox"/> DRY	<input type="checkbox"/> OTHER	7	UNIT AGREEMENT NAME	Rosa Unit	
b	TYPE OF COMPLETION	<input checked="" type="checkbox"/> NEW WELL	<input type="checkbox"/> WORKOVER	<input type="checkbox"/> DEEPEN	<input type="checkbox"/> PLUG BACK	<input type="checkbox"/> DIFF RESVR	<input type="checkbox"/> OTHER		
2	NAME OF OPERATOR						8	FARM OR LEASE NAME, WELL NO	Rosa Unit #019D
3	ADDRESS AND TELEPHONE NO						9	API WELL NO	30-039-30781
4	LOCATION OF WELL (Report location clearly and in accordance with any State requirements)* At Surface. 1980' FSL & 660' FWL, sec 24, T31N, R6W At top production interval reported below : 803' FSL & 694' FWL, sec 24, T31N, R6W At total depth Same						10.	FIELD AND POOL, OR WILDCAT Basin Mancos	
						11	SEC. T, R, M, OR BLOCK AND SURVEY OR AREA Sec 24, T31N, R6W		
						12	COUNTY OR	13. STATE	
							Rio Arriba	New Mexico	
15	DATE SPUDDED 8-25-09	16	DATE T D REACHED 9-8-09	17	DATE COMPLETED (READY TO PRODUCE) 11/16/09	18	ELEVATIONS (DK, RKB, RT, GR, ETC)* 6311' GR		
20	TOTAL DEPTH, MD & TVD 8164' MD / 7944' TVD		21	PLUG, BACK T.D., MD & TVD 8157' MD / 7937' TVD		22	IF MULTICOMP, HOW MANY 3 *	23	INTERVALS DRILLED BY
24. PRODUCING INTERVAL(S), OF THIS COMPLETION - TOP, BOTTOM, NAME (MD AND TVD)* BASIN MANCOS - 6960' - 7734' MD Commingled with MV & DK per AZT-3263						25	WAS DIRECTIONAL SURVEY MADE YES		
26 TYPE ELECTRIC AND OTHER LOGS RUN Array Induction, Compensated Gamma Ray-Density-Neutron, Temperature, Ultra Sonic Gas Detector and CBL						27	WAS WELL CORED No		

28 CASING REPORT (Report all strings set in well)					
CASING SIZE/GRADE	WEIGHT, LB/FT	DEPTH SET (MD)	HOLE SIZE	TOP OF CEMENT, CEMENTING RECORD	AMOUNT PULLED
10-3/4", J-55	40 5#	313'	14-3/4"	300 SX - SURFACE	
7-5/8", K-55	26 4#	3862'	9-7/8"	590 SX - SURFACE	
5-1/2", N-80	17 0#	8164'	6-3/4"	360 SX - 3490' (CBL)	

29 LINER RECORD				30 TUBING RECORD			
SIZE	TOP (MD)	BOTTOM (MD)	SACKS CEMENT*	SCREEN (MD)	SIZE	DEPTH SET (MD)	PACKER SET (MD)
					2.375", 4.7#, J-55 & N-80 EUE 8rd	8006'	none

31. PERFORATION RECORD (Interval, size, and number)				32 ACID, SHOT, FRACTURE, CEMENT SQUEEZE, ETC			
Upper Mancos 81, 0 34" holes				DEPTH INTERVAL (MD)	AMOUNT AND KIND OF MATERIAL USED		
Lower Mancos 81, 0 34" holes				6960'-7220'	Frac with 6406# 100 mesh followed w/92,349# 40/70 BASF		
				7272'-7734'	Frac with 6396# 100 mesh BASF followed with 98,292# 40/70 BASF		

33 PRODUCTION							
DATE OF FIRST PRODUCTION		PRODUCTION METHOD (Flowing, gas lift, pumping-size and type of pump)				WELL STATUS (PRODUCING OR SI)	
		Flowing				SI - waiting on tie-in	
DATE OF TEST	TESTED	CHOKE SIZE	PROD'N FOR TEST PERIOD	OIL - BBL	GAS - MCF	WATER - BBL	GAS-OIL RATIO
11/13/09	2 hr	32/64"					
FLOW TBG PRESS	CASING PRESSURE	CALCULATED 24-HOUR RATE		OIL - BBL	GAS - MCF	WATER - BBL	OIL GRAVITY-API (CORR )
0	400 lb				886 mcf/d		

34	DISPOSITION OF GAS (Sold, used for fuel, vented, etc )	non flaring	TEST WITNESSED BY	Weldon Higgins
----	--	-------------	-------------------	----------------

35	LIST OF ATTACHMENTS	SUMMARY OF POROUS ZONES, WELLBORE DIAGRAM, Directional EOW report
----	---------------------	---

36 I hereby certify that the foregoing and attached information is complete and correct as determined from all available records

SIGNED \_\_\_\_\_ TITLE Regulatory Specialist DATE 11/18/2009

UNITED STATES  
DEPARTMENT OF THE INTERIOR  
BUREAU OF LAND MANAGEMENT

SUBMIT IN  
DUPLICATE

(See other instructions on  
reverse side)

FORM APPROVED  
OMB NO 1004-0137  
Expires February 28, 1995

WELL COMPLETION OR RECOMPLETION REPORT AND LOG*						5 LEASE DESIGNATION AND LEASE NO NMSF-078767									
						6 IF INDIAN, ALLOTTEE OR									
1a. TYPE OF WELL <input type="checkbox"/> OIL WELL <input checked="" type="checkbox"/> GAS WELL <input type="checkbox"/> DRY <input type="checkbox"/> OTHER						7 UNIT AGREEMENT NAME Rosa Unit									
b. TYPE OF COMPLETION <input checked="" type="checkbox"/> NEW WELL <input type="checkbox"/> WORKOVER <input type="checkbox"/> DEEPEN <input type="checkbox"/> PLUG BACK <input type="checkbox"/> DIFF RESVR <input type="checkbox"/> OTHER															
2 NAME OF OPERATOR WILLIAMS PRODUCTION COMPANY						8 FARM OR LEASE NAME, WELL NO Rosa Unit #019D									
3 ADDRESS AND TELEPHONE NO P O. Box 640, Aztec, NM 87410 (505) 634-4208						9 API WELL NO 30-039-30781									
4 LOCATION OF WELL (Report location clearly and in accordance with any State requirements)* At Surface: 1980' FSL & 660' FWL, sec 24, T31N, R6W At top production interval reported below: 803' FSL & 694' FWL, sec 24, T31N, R6W At total depth: Same						10 FIELD AND POOL, OR WILDCAT Blanco Mesaverde									
						11 SEC., T., R., M, OR BLOCK AND SURVEY OR AREA Sec 24, T31N, R6W									
						14 PERMIT NO	DATE ISSUED	12 COUNTY OR Rio Arriba	13 STATE New Mexico						
15 DATE SPUDDED 8-25-09	16 DATE T D REACHED 9-8-09	17 DATE COMPLETED (READY TO PRODUCE) 11/16/09		18 ELEVATIONS (DK, RKB, RT, GR, ETC)* 6311' GR		19 ELEVATION CASINGHEAD									
20 TOTAL DEPTH, MD & TVD 8164' MD / 7944' TVD		21 PLUG, BACK T D, MD & TVD 8157' MD / 7937' TVD		22 IF MULTICOMP, HOW MANY 3*	23 INTERVALS DRILLED BY	ROTARY TOOLS x	CABLE TOOLS								
24 PRODUCING INTERVAL(S), OF THIS COMPLETION - TOP, BOTTOM, NAME (MD AND TVD)* BLANCO MESAVERDE 5353' - 6181' MD Commingled with MC & DK per AZT-3263						25 WAS DIRECTIONAL SURVEY MADE YES									
26 TYPE ELECTRIC AND OTHER LOGS RUN Array Induction, Compensated Gamma Ray-Density-Neutron, Temperature, Ultra Sonic Gas Detector and CBL						27 WAS WELL CORED No									
28 CASING REPORT (Report all strings set in well)															
CASING SIZE/GRADE		WEIGHT, LB/FT		DEPTH SET (MD)		HOLE SIZE		TOP OF CEMENT, CEMENTING RECORD		AMOUNT PULLED					
10-3/4", J-55		40.5#		313'		14-3/4"		300 SX - SURFACE							
7-5/8", K-55		26.4#		3862'		9-7/8"		590 SX - SURFACE							
5-1/2", N-80		17.0#		8164'		6-3/4"		360 SX - 3490' (CBL)							
29 LINER RECORD						30 TUBING RECORD									
SIZE		TOP (MD)		BOTTOM (MD)		SACKS CEMENT*		SCREEN (MD)		SIZE		DEPTH SET (MD)		PACKER SET (MD)	
										2 3/5", 4 7/8, J-55 & N-80 EUE 8rd		8006'		none	
31 PERFORATION RECORD (Interval, size, and number)						32 ACID, SHOT, FRACTURE, CEMENT SQUEEZE, ETC									
Upper MV: 63, 0.34" holes  Lower MV: 69, 0.34" holes						DEPTH INTERVAL (MD)		AMOUNT AND KIND OF MATERIAL USED							
						5353'-5734'		Frac with 80,120# 20/40 mesh BASF							
						5816'-6181'		Frac with 80,000# 20/40 mesh BASF							
33 PRODUCTION															
DATE OF FIRST PRODUCTION		PRODUCTION METHOD (Flowing, gas lift, pumping-size and type of pump) Flowing						WELL STATUS (PRODUCING OR SI) SI - waiting on tie-in							
DATE OF TEST 11/13/09	TESTED 2 hr	CHOKE SIZE 32/64"	PROD'N FOR TEST PERIOD	OIL - BBL	GAS - MCF	WATER - BBL	GAS-OIL RATIO								
FLOW TBG PRESS 0	CASING PRESSURE 400 lb	CALCULATED 24-HOUR RATE			OIL - BBL	GAS - MCF 934 mcf/d	WATER - BBL	OIL GRAVITY-API (CORR.)							
34 DISPOSITION OF GAS (Sold, used for fuel, vented, etc.) non flaring								TEST WITNESSED BY- Weldon Huggins							
35 LIST OF ATTACHMENTS SUMMARY OF POROUS ZONES, WELLBORE DIAGRAM, Directional EOW report															
36 I hereby certify that the foregoing and attached information is complete and correct as determined from all available records															
SIGNED _____ TITLE Regulatory Specialist DATE 11/18/2009															

UNITED STATES  
DEPARTMENT OF INTERIOR  
BUREAU OF LAND MANAGEMENT

FORM APPROVED  
Budget Bureau No 1004-0135  
Expires March 31, 1993

SUNDRY NOTICE AND REPORTS ON WELLS

Do not use this form for proposals to drill or to deepen or reentry to a different reservoir Use "APPLICATION TO DRILL" for permit for such proposals

5. Lease Designation and Serial No  
NMSF-078767

6. If Indian, Allottee or Tribe Name

SUBMIT IN TRIPLICATE

7. If Unit or CA, Agreement Designation  
Rosa Unit

1 Type of Well  
Oil Well Gas Well ☒ Other

8. Well Name and No.  
Rosa Unit 019D

2 Name of Operator  
WILLIAMS PRODUCTION COMPANY

9 API Well No  
30-039-30781

3. Address and Telephone No.  
PO Box 640 Aztec, NM 87410-0640 505-634-4208

10. Field and Pool, or Exploratory Area  
BLANCO MV/BASIN DK/BASIN MC

4 Location of Well (Footage, Sec , T , R., M , or Survey Description)  
SURF 1980' FSL & 660' FWL  
BHL 803' FSL & 694 FWL SEC 24 31N 6W

11 County or Parish, State  
Rio Arriba, New Mexico

CHECK APPROPRIATE BOX(s) TO INDICATE NATURE OF NOTICE, REPORT, OR OTHER DATA

TYPE OF SUBMISSION

TYPE OF ACTION

Notice of Intent

☒ Subsequent Report

Final Abandonment

Abandonment

Recompletion

Plugging Back

Casing Repair

Altering Casing

☒ Other Completion

Change of Plans

New Construction

Non-Routine Fracturing

Water Shut-Off

Conversion to Injection

Dispose Water

(Note: Report results of multiple completion on Well Completion or Recompletion Report and Log form )

13. Describe Proposed or Completed Operations (Clearly state all pertinent details, and give pertinent dates, including estimated date of starting any proposed work. If well is directionally drilled, give subsurface locations and measured and true vertical depths for all markers and zones pertinent to this work.)\*

9-16-09 – RU BWWC and run CBL, TOC @ 3490'

9-22-09 – MIRU AWS #471 to prep for rigless frac

9-23-09 – Test production csg to 1500 psi for 30 min with no leak off. DO cement & FC to PBTD @ 8157'

9-24-09 – RDMO AWS #471

10-2-09 – Rigless – perf Dakota, 8031'-8149', with 78, 0.34" holes

10-5-09 – Frac Dakota with 4971# 100 mesh BASF followed with 64,277# 40/70 BASF. Set Flo-thru BP @ 7746', unable to get free from BP, decision was made to pull out of rope socket , get on well with rig and fish WL tools

10-6-09 – MIRU AWS #748 to fish WL tools and DO BP

10-10-09 – DO Flo-thru BP @ 7746'

14 I hereby certify that the foregoing is true and correct

Signed \_\_\_\_\_  
Heather Riley

Title Regulatory Spec

Date 11/18/2009

(This space for Federal or State office use)

Approved by \_\_\_\_\_

Title \_\_\_\_\_

Date \_\_\_\_\_

Conditions of approval, if any:

Title 18 U S C. Section 1001, makes it a crime for any person knowingly and willfully to make to any department or agency of the United States any false, fictitious or fraudulent statements or representations as to any matter within its jurisdiction

Exploration & Production  
San Juan Basin Operations  
720 So. Main / PO Box 640  
Áztéc, NM 87410  
505-634-4200 / 505-634-4205 fax



## Temporary Pit Inspection

### FACILITY INFORMATION

Facility Name: Rosa Unit #19D	API #: 30 - 039 - 30781
-------------------------------	-------------------------

Pit Type:	Drilling	Workover	X Completion	Inspection:	Daily (Rig)	Weekly (Tech)
-----------	----------	----------	--------------	-------------	-------------	---------------

Pit Liner intact (no visible tears)	X Yes    No    If No, Report to EH&S immediately	Date Reported:	Time
Pit Properly Fenced (no fence on rig side if on site)	X Yes    No    Not Required (if site fully fenced)		
Pit Slopes intact	X Yes    No		
Adequate freeboard (liquid level 2 vertical feet from berm top)	X Yes    No    Not Applicable		
Free oil or sheen present on pit	Yes    X No		
Flare Pit free of liquids	X Yes    No    Not Applicable		
Comments:			
Inspector Signature:			
Printed Name: Weldon Higgins			
Title: rig consultant			
Date: 11/11/09		Phone: 505-320-4871	

Record Retention: Submit with Closure  
File: EH&S Well Files



Exploration & Production  
San Juan Basin Operations  
720 So. Main / PO Box 640  
Aztéc, NM 87410  
505-634-4200 / 505-634-4205 fax



## Temporary Pit Inspection

### FACILITY INFORMATION

Facility Name: Rosa Unit #19D	API #: 30 - 039 - 30781
-------------------------------	-------------------------

Pit Type:    Drilling        Workover        X Completion	Inspection:    Daily (Rig)        Weekly (Tech)
---	---

Pit Liner intact (no visible tears)	X Yes    No    If No, Report to EH&S immediately	Date Reported:	Time
Pit Properly Fenced (no fence on rig side if on site)	X Yes    No    Not Required (if site fully fenced)		
Pit Slopes intact	X Yes    No		
Adequate freeboard (liquid level 2 <u>vertical</u> feet from berm top)	X Yes    No    Not Applicable		
Free oil or sheen present on pit	Yes    X No		
Flare Pit free of liquids	X Yes    No    Not Applicable		
Comments:			
Inspector Signature:			
Printed Name: Weldon Higgins			
Title: rig consultant			
Date: 11/17/09		Phone: 505-320-4871	

Record Retention: Submit with Closure  
File: EH&S Well Files

Exploration & Production  
San Juan Basin Operations  
720 So. Main / PO Box 640  
Aztec, NM 87410  
505-634-4200 / 505-634-4205 fax



## Temporary Pit Inspection

### FACILITY INFORMATION

Facility Name: Rosa Unit #19D	API #: 30 - 039 - 30781
-------------------------------	-------------------------

Pit Type: Drilling	Workover	X Completion	Inspection: Daily (Rig)	Weekly (Tech)
--------------------	----------	--------------	-------------------------	---------------

Pit Liner intact (no visible tears)	X Yes No If No, Report to EH&S immediately	Date Reported:	Time
Pit Properly Fenced (no fence on rig side if on site)	X Yes No Not Required (if site fully fenced)		
Pit Slopes intact	X Yes No		
Adequate freeboard (liquid level 2 <u>vertical</u> feet from berm top)	X Yes No Not Applicable		
Free oil or sheen present on pit	Yes X No		
Flare Pit free of liquids	X Yes No Not Applicable		
Comments:			
Inspector Signature:			
Printed Name: Weldon Higgins			
Title: rig consultant			
Date: 11/16/09		Phone: 505-320-4871	

Record Retention: Submit with Closure  
File: EH&S Well Files

Exploration & Production  
San Juan Basin Operations  
720 So. Main / PO Box 640  
Aztec, NM 87410  
505-634-4200 / 505-634-4205 fax



## Temporary Pit Inspection

### FACILITY INFORMATION

Facility Name: Rosa Unit #19D	API #: 30 - 039 - 30781
-------------------------------	-------------------------

Pit Type:	Drilling	Workover	X Completion	Inspection:	Daily (Rig)	Weekly (Tech)
-----------	----------	----------	--------------	-------------	-------------	---------------

Pit Liner intact (no visible tears)	X Yes    No    If No, Report to EH&S immediately	Date Reported:	Time
Pit Properly Fenced (no fence on rig side if on site)	X Yes    No    Not Required (if site fully fenced)		
Pit Slopes intact	X Yes    No		
Adequate freeboard (liquid level 2 <u>vertical</u> feet from berm top)	X Yes    No    Not Applicable		
Free oil or sheen present on pit	Yes    X No		
Flare Pit free of liquids	X Yes    No    Not Applicable		
Comments:			
Inspector Signature:			
Printed Name: Weldon Higgins			
Title: rig consultant			
Date: 11/15/09		Phone: 505-320-4871	

Record Retention: Submit with Closure  
File: EH&S Well Files

Exploration & Production  
San Juan Basin Operations  
720 So. Main / PO Box 640  
Aztec, NM 87410  
505-634-4200 / 505-634-4205 fax



## Temporary Pit Inspection

### FACILITY INFORMATION

<b>Facility Name:</b> Rosa Unit #19D	<b>API #:</b> 30 - 039 - 30781
--------------------------------------	--------------------------------

<b>Pit Type:</b> Drilling        Workover        X Completion	<b>Inspection:</b> Daily (Rig)        Weekly (Tech)
---	---

Pit Liner intact (no visible tears)	X Yes    No    If No, Report to EH&S immediately	Date Reported:	Time
Pit Properly Fenced (no fence on rig side if on site)	X Yes    No    Not Required (if site fully fenced)		
Pit Slopes intact	X Yes    No		
Adequate freeboard (liquid level 2 <u>vertical</u> feet from berm top)	X Yes    No    Not Applicable		
Free oil or sheen present on pit	Yes    X No		
Flare Pit free of liquids	X Yes    No    Not Applicable		
Comments:			
Inspector Signature:			
Printed Name: Weldon Higgins			
Title: rig consultant			
Date: 11/14/09		Phone: 505-320-4871	

Record Retention: Submit with Closure  
File: EH&S Well Files

Exploration & Production  
San Juan Basin Operations  
720 So. Main / PO Box 640  
Aztec, NM 87410  
505-634-4200 / 505-634-4205 fax



## Temporary Pit Inspection

### FACILITY INFORMATION

<b>Facility Name:</b> Rosa Unit #19D	<b>API #:</b> 30 - 039 - 30781
--------------------------------------	--------------------------------

<b>Pit Type:</b> Drilling        Workover        X Completion	<b>Inspection:</b> Daily (Rig)        Weekly (Tech)
---	---

Pit Liner intact (no visible tears)	X Yes    No    If No, Report to EH&S immediately	Date Reported:	Time
Pit Properly Fenced (no fence on rig side if on site)	X Yes    No    Not Required (if site fully fenced)		
Pit Slopes intact	X Yes    No		
Adequate freeboard (liquid level 2 <u>vertical</u> feet from berm top)	X Yes    No    Not Applicable		
Free oil or sheen present on pit	Yes    X No		
Flare Pit free of liquids	X Yes    No    Not Applicable		
Comments:			
Inspector Signature:			
Printed Name: Weldon Higgins			
Title: rig consultant			
Date: 11/13/09		Phone: 505-320-4871	

Record Retention: Submit with Closure  
File: EH&S Well Files

Exploration & Production  
San Juan Basin Operations  
720 So. Main / PO Box 640  
Aztec, NM 87410  
505-634-4200 / 505-634-4205 fax



## Temporary Pit Inspection

### FACILITY INFORMATION

Facility Name: Rosa Unit #19D	API #: 30 - 039 - 30781
-------------------------------	-------------------------

Pit Type: Drilling	Workover	X Completion	Inspection: Daily (Rig)	Weekly (Tech)
--------------------	----------	--------------	-------------------------	---------------

Pit Liner intact (no visible tears)	X Yes No If No, Report to EH&S immediately	Date Reported:	Time
Pit Properly Fenced (no fence on rig side if on site)	X Yes No Not Required (if site fully fenced)		
Pit Slopes intact	X Yes No		
Adequate freeboard (liquid level 2 vertical feet from berm top)	X Yes No Not Applicable		
Free oil or sheen present on pit	Yes X No		
Flare Pit free of liquids	X Yes No Not Applicable		
Comments:			
Inspector Signature:			
Printed Name: Weldon Higgins			
Title: rig consultant			
Date: 11/12/09		Phone: 505-320-4871	

Record Retention: Submit with Closure  
File: EH&S Well Files

Exploration & Production  
San Juan Basin Operations  
720 So. Main / PO Box 640  
Aztec, NM 87410  
505-634-4200 / 505-634-4205 fax



## Temporary Pit Inspection

### FACILITY INFORMATION

Facility Name: Rosa Unit #19D	API #: 30 - 039 - 30781
-------------------------------	-------------------------

Pit Type:	Drilling	Workover	X Completion	Inspection:	Daily (Rig)	Weekly (Tech)
-----------	----------	----------	--------------	-------------	-------------	---------------

Pit Liner intact (no visible tears)	X Yes    No    If No, Report to EH&S immediately	Date Reported:	Time
Pit Properly Fenced (no fence on rig side if on site)	X Yes    No    Not Required (if site fully fenced)		
Pit Slopes intact	X Yes    No		
Adequate freeboard (liquid level 2 <u>vertical</u> feet from berm top)	X Yes    No    Not Applicable		
Free oil or sheen present on pit	Yes    X No		
Flare Pit free of liquids	X Yes    No    Not Applicable		
Comments:			
Inspector Signature:			
Printed Name: Weldon Higgins			
Title: rig consultant			
Date: 11/09/09		Phone: 505-320-4871	

Record Retention: Submit with Closure  
File: EH&S Well Files

Exploration & Production  
San Juan Basin Operations  
720 So. Main / PO Box 640  
Aztec, NM 87410  
505-634-4200 / 505-634-4205 fax



## Temporary Pit Inspection

### FACILITY INFORMATION

Facility Name: Rosa Unit #19D	API #: 30 - 039 - 30781
-------------------------------	-------------------------

Pit Type:	Drilling	Workover	X Completion	Inspection:	Daily (Rig)	Weekly (Tech)
-----------	----------	----------	--------------	-------------	-------------	---------------

Pit Liner intact (no visible tears)	X Yes    No    If No, Report to EH&S immediately	Date Reported:	Time
Pit Properly Fenced (no fence on rig side if on site)	X Yes    No    Not Required (if site fully fenced)		
Pit Slopes intact	X Yes    No		
Adequate freeboard (liquid level 2 <u>vertical</u> feet from berm top)	X Yes    No    Not Applicable		
Free oil or sheen present on pit	Yes    X No		
Flare Pit free of liquids	X Yes    No    Not Applicable		
Comments:			
Inspector Signature:			
Printed Name: Weldon Higgins			
Title: rig consultant			
Date: 11/10/09		Phone: 505-320-4871	

Record Retention: Submit with Closure  
File: EH&S Well Files



Exploration & Production  
San Juan Basin Operations  
720 So. Main / PO Box 640  
Aztec, NM 87410  
505-634-4200 / 505-634-4205 fax



## Temporary Pit Inspection

### FACILITY INFORMATION

<b>Facility Name:</b> Rosa Unit #19D	<b>API #:</b> 30 - 039 - 30781
--------------------------------------	--------------------------------

<b>Pit Type:</b> Drilling        Workover        X Completion	<b>Inspection:</b> Daily (Rig)        Weekly (Tech)
---	---

Pit Liner intact (no visible tears)	X Yes    No    If No, Report to EH&S immediately	Date Reported:	Time
Pit Properly Fenced (no fence on rig side if on site)	X Yes    No    Not Required (if site fully fenced)		
Pit Slopes intact	X Yes    No		
Adequate freeboard (liquid level 2 <u>vertical</u> feet from berm top)	X Yes    No    Not Applicable		
Free oil or sheen present on pit	Yes    X No		
Flare Pit free of liquids	X Yes    No    Not Applicable		
Comments:			
Inspector Signature:			
Printed Name: Weldon Higgins			
Title: rig consultant			
Date: 11/08/09		Phone: 505-320-4871	

Record Retention: Submit with Closure  
File: EH&S Well Files

Exploration & Production  
San Juan Basin Operations  
720 So. Main / PO Box 640  
Aztec, NM 87410  
505-634-4200 / 505-634-4205 fax



## Temporary Pit Inspection

### FACILITY INFORMATION

Facility Name: Rosa Unit #19D	API #: 30 - 039 - 30781
-------------------------------	-------------------------

Pit Type:	Drilling	Workover	X Completion	Inspection:	Daily (Rig)	Weekly (Tech)
-----------	----------	----------	--------------	-------------	-------------	---------------

Pit Liner intact (no visible tears)	X Yes    No    If No, Report to EH&S immediately	Date Reported:	Time
Pit Properly Fenced (no fence on rig side if on site)	X Yes    No    Not Required (if site fully fenced)		
Pit Slopes intact	X Yes    No		
Adequate freeboard (liquid level 2 <u>vertical</u> feet from berm top)	X Yes    No    Not Applicable		
Free oil or sheen present on pit	Yes    X No		
Flare Pit free of liquids	X Yes    No    Not Applicable		
Comments:			
Inspector Signature:			
Printed Name: Weldon Higgins			
Title: rig consultant			
Date: 11/07/09		Phone: 505-320-4871	

Record Retention: Submit with Closure  
File: EH&S Well Files

Exploration & Production  
San Juan Basin Operations  
720 So. Main / PO Box 640  
Aztec, NM 87410  
505-634-4200 / 505-634-4205 fax



## Temporary Pit Inspection

### FACILITY INFORMATION

Facility Name: Rosa Unit #19D	API #: 30 - 039 - 30781
-------------------------------	-------------------------

Pit Type:    Drilling        Workover        X Completion	Inspection:        Daily (Rig)        Weekly (Tech)
---	---

Pit Liner intact (no visible tears)	X Yes    No    If No, Report to EH&S immediately	Date Reported:	Time
Pit Properly Fenced (no fence on rig side if on site)	X Yes    No    Not Required (if site fully fenced)		
Pit Slopes intact	X Yes    No		
Adequate freeboard (liquid level 2 <u>vertical</u> feet from berm top)	X Yes    No    Not Applicable		
Free oil or sheen present on pit	Yes    X No		
Flare Pit free of liquids	X Yes    No    Not Applicable		
Comments:			
Inspector Signature:			
Printed Name: Weldon Higgins			
Title: rig consultant			
Date: 11/06/09		Phone: 505-320-4871	

Record Retention: Submit with Closure  
File: EH&S Well Files

Exploration & Production  
San Juan Basin Operations  
720 So. Main / PO Box 640  
Aztec, NM 87410  
505-634-4200 / 505-634-4205 fax



## Temporary Pit Inspection

### FACILITY INFORMATION

Facility Name: Rosa Unit #19D	API #: 30 - 039 - 30781
-------------------------------	-------------------------

Pit Type:	Drilling	Workover	X Completion	Inspection:	Daily (Rig)	Weekly (Tech)
-----------	----------	----------	--------------	-------------	-------------	---------------

Pit Liner intact (no visible tears)	X Yes   No   If No, Report to EH&S immediately	Date Reported:	Time
Pit Properly Fenced (no fence on rig side if on site)	X Yes   No   Not Required (if site fully fenced)		
Pit Slopes intact	X Yes   No		
Adequate freeboard (liquid level 2 vertical feet from berm top)	X Yes   No   Not Applicable		
Free oil or sheen present on pit	Yes   X No		
Flare Pit free of liquids	X Yes   No   Not Applicable		
Comments:			
Inspector Signature:			
Printed Name: Weldon Higgins			
Title: rig consultant			
Date: 11/01/09		Phone: 505-320-4871	

Record Retention: Submit with Closure  
File: EH&S Well Files

Exploration & Production  
San Juan Basin Operations  
720 So. Main / PO Box 640  
Aztec, NM 87410  
505-634-4200 / 505-634-4205 fax



## Temporary Pit Inspection

### FACILITY INFORMATION

Facility Name: Rosa Unit #19D	API #: 30 - 039 - 30781
-------------------------------	-------------------------

Pit Type:	Drilling	Workover	X Completion	Inspection:	Daily (Rig)	Weekly (Tech)
-----------	----------	----------	--------------	-------------	-------------	---------------

Pit Liner intact (no visible tears)	X Yes No If No, Report to EH&S immediately	Date Reported:	Time
Pit Properly Fenced (no fence on rig side if on site)	X Yes No Not Required (if site fully fenced)		
Pit Slopes intact	X Yes No		
Adequate freeboard (liquid level 2 <u>vertical</u> feet from berm top)	X Yes No Not Applicable		
Free oil or sheen present on pit	Yes X No		
Flare Pit free of liquids	X Yes No Not Applicable		
Comments:			
Inspector Signature:			
Printed Name: Weldon Higgins			
Title: rig consultant			
Date: 10/31/09		Phone: 505-320-4871	

Record Retention: Submit with Closure  
File: EH&S Well Files

Exploration & Production  
San Juan Basin Operations  
720 So. Main / PO Box 640  
Aztec, NM 87410  
505-634-4200 / 505-634-4205 fax



## Temporary Pit Inspection

### FACILITY INFORMATION

<b>Facility Name:</b> Rosa Unit #19D	<b>API #:</b> 30 - 039 - 30781
--------------------------------------	--------------------------------

<b>Pit Type:</b> Drilling        Workover        X Completion	<b>Inspection:</b> Daily (Rig)        Weekly (Tech)
---	---

Pit Liner intact (no visible tears)	X Yes    No    If No, Report to EH&S immediately	Date Reported:	Time
Pit Properly Fenced (no fence on rig side if on site)	X Yes    No    Not Required (if site fully fenced)		
Pit Slopes intact	X Yes    No		
Adequate freeboard (liquid level 2 <u>vertical</u> feet from berm top)	X Yes    No    Not Applicable		
Free oil or sheen present on pit	Yes    X No		
Flare Pit free of liquids	X Yes    No    Not Applicable		
Comments:			
Inspector Signature:			
Printed Name: Weldon Higgins			
Title: rig consultant			
Date: 10/30/09		Phone: 505-320-4871	

Record Retention: Submit with Closure  
File: EH&S Well Files

Exploration & Production  
San Juan Basin Operations  
720 So. Main / PO Box 640  
Aztec, NM 87410  
505-634-4200 / 505-634-4205 fax



## Temporary Pit Inspection

### FACILITY INFORMATION

Facility Name: Rosa Unit #19D	API #: 30 - 039 - 30781
-------------------------------	-------------------------

Pit Type:	Drilling	Workover	X Completion	Inspection:	Daily (Rig)	Weekly (Tech)
-----------	----------	----------	--------------	-------------	-------------	---------------

Pit Liner intact (no visible tears)	X Yes No If No, Report to EH&S immediately	Date Reported:	Time
Pit Properly Fenced (no fence on rig side if on site)	X Yes No Not Required (if site fully fenced)		
Pit Slopes intact	X Yes No		
Adequate freeboard (liquid level 2 vertical feet from berm top)	X Yes No Not Applicable		
Free oil or sheen present on pit	Yes X No		
Flare Pit free of liquids	X Yes No Not Applicable		
Comments:			
Inspector Signature:			
Printed Name: Weldon Higgins			
Title: rig consultant			
Date: 10/28/09		Phone: 505-320-4871	

Record Retention: Submit with Closure  
File: EH&S Well Files

Exploration & Production  
San Juan Basin Operations  
720 So. Main / PO Box 640  
Aztec, NM 87410  
505-634-4200 / 505-634-4205 fax



## Temporary Pit Inspection

### FACILITY INFORMATION

<b>Facility Name:</b> Rosa Unit #19D	<b>API #:</b> 30 - 039 - 30781
--------------------------------------	--------------------------------

<b>Pit Type:</b> Drilling    Workover    X Completion	<b>Inspection:</b> Daily (Rig)    Weekly (Tech)
---	---

Pit Liner intact (no visible tears)	X Yes    No    If No, Report to EH&S immediately	Date Reported:	Time
Pit Properly Fenced (no fence on rig side if on site)	X Yes    No    Not Required (if site fully fenced)		
Pit Slopes intact	X Yes    No		
Adequate freeboard (liquid level 2 <u>vertical</u> feet from berm top)	X Yes    No    Not Applicable		
Free oil or sheen present on pit	Yes    X No		
Flare Pit free of liquids	X Yes    No    Not Applicable		
Comments:			
Inspector Signature:			
Printed Name: Weldon Higgins			
Title: rig consultant			
Date: 10/27/09		Phone: 505-320-4871	

Record Retention: Submit with Closure  
File: EH&S Well Files



The logo for William's, featuring the brand name in a stylized, italicized font with a swoosh underline.

Record Retention: Submit with Closure  
File: EH&S Well Files

Exploration & Production  
San Juan Basin Operations  
720 So. Main / PO Box 640  
Aztec, NM 87410  
505-634-4200 / 505-634-4205 fax



## Temporary Pit Inspection

### FACILITY INFORMATION

Facility Name: Rosa Unit #19D	API #: 30 - 039 - 30781
-------------------------------	-------------------------

Pit Type:	Drilling	Workover	X Completion	Inspection:	Daily (Rig)	Weekly (Tech)
-----------	----------	----------	--------------	-------------	-------------	---------------

Pit Liner intact (no visible tears)	X Yes    No    If No, Report to EH&S immediately	Date Reported:	Time
Pit Properly Fenced (no fence on rig side if on site)	X Yes    No    Not Required (if site fully fenced)		
Pit Slopes intact	X Yes    No		
Adequate freeboard (liquid level 2 vertical feet from berm top)	X Yes    No    Not Applicable		
Free oil or sheen present on pit	Yes    X No		
Flare Pit free of liquids	X Yes    No    Not Applicable		
Comments:			
Inspector Signature:			
Printed Name: Weldon Higgins			
Title: rig consultant			
Date: 10/25/09		Phone: 505-320-4871	

Record Retention: Submit with Closure  
File: EH&S Well Files

Exploration & Production  
San Juan Basin Operations  
720 So. Main / PO Box 640  
Aztec, NM 87410  
505-634-4200 / 505-634-4205 fax



## Temporary Pit Inspection

### FACILITY INFORMATION

Facility Name: Rosa Unit #19D	API #: 30 - 039 - 30781
-------------------------------	-------------------------

Pit Type:	Drilling	Workover	X Completion	Inspection:	Daily (Rig)	Weekly (Tech)
-----------	----------	----------	--------------	-------------	-------------	---------------

Pit Liner intact (no visible tears)	X Yes   No   If No, Report to EH&S immediately	Date Reported:	Time
Pit Properly Fenced (no fence on rig side if on site)	X Yes   No   Not Required (if site fully fenced)		
Pit Slopes intact	X Yes   No		
Adequate freeboard (liquid level 2 <u>vertical</u> feet from berm top)	X Yes   No   Not Applicable		
Free oil or sheen present on pit	Yes   X No		
Flare Pit free of liquids	X Yes   No   Not Applicable		
Comments:			
Inspector Signature:			
Printed Name: Weldon Higgins			
Title: rig consultant			
Date: 10/24/09		Phone: 505-320-4871	

Record Retention: Submit with Closure  
File: EH&S Well Files

Exploration & Production  
San Juan Basin Operations  
720 So. Main / PO Box 640  
Aztec, NM 87410  
505-634-4200 / 505-634-4205 fax



## Temporary Pit Inspection

### FACILITY INFORMATION

Facility Name: Rosa Unit #19D	API #: 30 - 039 - 30781
-------------------------------	-------------------------

Pit Type:    Drilling        Workover        X Completion	Inspection:        Daily (Rig)        Weekly (Tech)
---	---

Pit Liner intact (no visible tears)	X Yes    No    If No, Report to EH&S immediately	Date Reported:	Time
Pit Properly Fenced (no fence on rig side if on site)	X Yes    No    Not Required (if site fully fenced)		
Pit Slopes intact	X Yes    No		
Adequate freeboard (liquid level 2 <u>vertical</u> feet from berm top)	X Yes    No    Not Applicable		
Free oil or sheen present on pit	Yes    X No		
Flare Pit free of liquids	X Yes    No    Not Applicable		
Comments:			
Inspector Signature:			
Printed Name: Weldon Higgins			
Title: rig consultant			
Date: 10/23/09		Phone: 505-320-4871	

Record Retention: Submit with Closure  
File: EH&S Well Files

Exploration & Production  
San Juan Basin Operations  
720 So. Main / PO Box 640  
Aztec, NM 87410  
505-634-4200 / 505-634-4205 fax



## Temporary Pit Inspection

### FACILITY INFORMATION

Facility Name: Rosa Unit #19D	API #: 30 - 039 - 30781
-------------------------------	-------------------------

Pit Type:	Drilling	Workover	X Completion	Inspection:	Daily (Rig)	Weekly (Tech)
-----------	----------	----------	--------------	-------------	-------------	---------------

Pit Liner intact (no visible tears)	X Yes No If No, Report to EH&S immediately	Date Reported:	Time
Pit Properly Fenced (no fence on rig side if on site)	X Yes No Not Required (if site fully fenced)		
Pit Slopes intact	X Yes No		
Adequate freeboard (liquid level 2 <u>vertical</u> feet from berm top)	X Yes No Not Applicable		
Free oil or sheen present on pit	Yes X No		
Flare Pit free of liquids	X Yes No Not Applicable		
Comments:			
Inspector Signature:			
Printed Name: Weldon Higgins			
Title: rig consultant			
Date: 10/22/09		Phone: 505-320-4871	

Record Retention: Submit with Closure  
File: EH&S Well Files

Exploration & Production  
San Juan Basin Operations  
720 So. Main / PO Box 640  
Aztec, NM 87410  
505-634-4200 / 505-634-4205 fax



## Temporary Pit Inspection

### FACILITY INFORMATION

Facility Name: Rosa Unit #19D	API #: 30 - 039 - 30781
-------------------------------	-------------------------

Pit Type:	Drilling	Workover	X Completion	Inspection:	Daily (Rig)	Weekly (Tech)
-----------	----------	----------	--------------	-------------	-------------	---------------

Pit Liner intact (no visible tears)	X Yes   No   If No, Report to EH&S immediately	Date Reported:	Time
Pit Properly Fenced (no fence on rig side if on site)	X Yes   No   Not Required (if site fully fenced)		
Pit Slopes intact	X Yes   No		
Adequate freeboard (liquid level 2 <u>vertical</u> feet from berm top)	X Yes   No   Not Applicable		
Free oil or sheen present on pit	Yes   X No		
Flare Pit free of liquids	X Yes   No   Not Applicable		
Comments:			
Inspector Signature:			
Printed Name: Weldon Higgins			
Title: rig consultant			
Date: 10/21/09		Phone: 505-320-4871	

Record Retention: Submit with Closure  
File: EH&S Well Files

Exploration & Production  
San Juan Basin Operations  
720 So. Main / PO Box 640  
Aztec, NM 87410  
505-634-4200 / 505-634-4205 fax



## Temporary Pit Inspection

### FACILITY INFORMATION

Facility Name: Rosa Unit #19D	API #: 30 - 039 - 30781
-------------------------------	-------------------------

Pit Type:	Drilling	Workover	X Completion	Inspection:	Daily (Rig)	Weekly (Tech)
-----------	----------	----------	--------------	-------------	-------------	---------------

Pit Liner intact (no visible tears)	X Yes    No    If No, Report to EH&S immediately	Date Reported:	Time
Pit Properly Fenced (no fence on rig side if on site)	X Yes    No    Not Required (if site fully fenced)		
Pit Slopes intact	X Yes    No		
Adequate freeboard (liquid level 2 <u>vertical</u> feet from berm top)	X Yes    No    Not Applicable		
Free oil or sheen present on pit	Yes    X No		
Flare Pit free of liquids	X Yes    No    Not Applicable		
Comments:			
Inspector Signature:			
Printed Name: Weldon Higgins			
Title: rig consultant			
Date: 10/20/09		Phone: 505-320-4871	

Record Retention: Submit with Closure  
File: EH&S Well Files

Exploration & Production  
San Juan Basin Operations  
720 So. Main / PO Box 640  
Aztec, NM 87410  
505-634-4200 / 505-634-4205 fax



## Temporary Pit Inspection

### FACILITY INFORMATION

Facility Name: Rosa Unit #19D	API #: 30 - 039 - 30781
-------------------------------	-------------------------

Pit Type:	Drilling	Workover	X Completion	Inspection:	Daily (Rig)	Weekly (Tech)
-----------	----------	----------	--------------	-------------	-------------	---------------

Pit Liner intact (no visible tears)	X Yes    No    If No, Report to EH&S immediately	Date Reported:	Time
Pit Properly Fenced (no fence on rig side if on site)	X Yes    No    Not Required (if site fully fenced)		
Pit Slopes intact	X Yes    No		
Adequate freeboard (liquid level 2 <u>vertical</u> feet from berm top)	X Yes    No    Not Applicable		
Free oil or sheen present on pit	Yes    X No		
Flare Pit free of liquids	X Yes    No    Not Applicable		
Comments:			
Inspector Signature:			
Printed Name: Weldon Higgins			
Title: rig consultant			
Date: 10/19/09		Phone: 505-320-4871	

Record Retention: Submit with Closure  
File: EH&S Well Files



Exploration & Production  
San Juan Basin Operations  
720 So. Main / PO Box 640  
Aztec, NM 87410  
505-634-4200 / 505-634-4205 fax



## Temporary Pit Inspection

### FACILITY INFORMATION

<b>Facility Name:</b> Rosa Unit #19D	<b>API #:</b> 30 - 039 - 30781
--------------------------------------	--------------------------------

<b>Pit Type:</b> Drilling        Workover        X Completion	<b>Inspection:</b> Daily (Rig)        Weekly (Tech)
---	---

Pit Liner intact (no visible tears)	X Yes    No    If No, Report to EH&S immediately	Date Reported:	Time
Pit Properly Fenced (no fence on rig side if on site)	X Yes    No    Not Required (if site fully fenced)		
Pit Slopes intact	X Yes    No		
Adequate freeboard (liquid level 2 <u>vertical</u> feet from berm top)	X Yes    No    Not Applicable		
Free oil or sheen present on pit	Yes    X No		
Flare Pit free of liquids	X Yes    No    Not Applicable		
Comments:			
Inspector Signature:			
Printed Name: Weldon Higgins			
Title: rig consultant			
Date: 10/19/09		Phone: 505-320-4871	

Record Retention: Submit with Closure  
File: EH&S Well Files

Exploration & Production  
San Juan Basin Operations  
720 So. Main / PO Box 640  
Aztec, NM 87410  
505-634-4200 / 505-634-4205 fax



## Temporary Pit Inspection

### FACILITY INFORMATION

Facility Name: Rosa Unit #19D	API #: 30 - 039 - 30781
-------------------------------	-------------------------

Pit Type:	Drilling	Workover	X Completion	Inspection:	Daily (Rig)	Weekly (Tech)
-----------	----------	----------	--------------	-------------	-------------	---------------

Pit Liner intact (no visible tears)	X Yes    No    If No, Report to EH&S immediately	Date Reported:	Time
Pit Properly Fenced (no fence on rig side if on site)	X Yes    No    Not Required (if site fully fenced)		
Pit Slopes intact	X Yes    No		
Adequate freeboard (liquid level 2 <u>vertical</u> feet from berm top)	X Yes    No    Not Applicable		
Free oil or sheen present on pit	Yes    X No		
Flare Pit free of liquids	X Yes    No    Not Applicable		
Comments:			
Inspector Signature:			
Printed Name: Weldon Higgins			
Title: rig consultant			
Date: 10/18/09		Phone: 505-320-4871	

Record Retention: Submit with Closure  
File: EH&S Well Files

Exploration & Production  
San Juan Basin Operations  
720 So. Main / PO Box 640  
Aztec, NM 87410  
505-634-4200 / 505-634-4205 fax



## Temporary Pit Inspection

### FACILITY INFORMATION

Facility Name: Rosa Unit #19D	API #: 30 - 039 - 30781
-------------------------------	-------------------------

Pit Type:	Drilling	Workover	X Completion	Inspection:	Daily (Rig)	Weekly (Tech)
-----------	----------	----------	--------------	-------------	-------------	---------------

Pit Liner intact (no visible tears)	X Yes    No    If No, Report to EH&S immediately	Date Reported:	Time
Pit Properly Fenced (no fence on rig side if on site)	X Yes    No    Not Required (if site fully fenced)		
Pit Slopes intact	X Yes    No		
Adequate freeboard (liquid level 2 <u>vertical</u> feet from berm top)	X Yes    No    Not Applicable		
Free oil or sheen present on pit	Yes    X No		
Flare Pit free of liquids	X Yes    No    Not Applicable		
Comments:			
Inspector Signature:			
Printed Name: Weldon Higgins			
Title: rig consultant			
Date: 10/17/09		Phone: 505-320-4871	

Record Retention: Submit with Closure  
File: EH&S Well Files

Exploration & Production  
San Juan Basin Operations  
720 So. Main / PO Box 640  
Aztec, NM 87410  
505-634-4200 / 505-634-4205 fax



## Temporary Pit Inspection

### FACILITY INFORMATION

Facility Name: Rosa Unit #19D	API #: 30 - 039 - 30781
-------------------------------	-------------------------

Pit Type:	Drilling	Workover	X Completion	Inspection:	Daily (Rig)	Weekly (Tech)
-----------	----------	----------	--------------	-------------	-------------	---------------

Pit Liner intact (no visible tears)	X Yes    No    If No, Report to EH&S immediately	Date Reported:	Time
Pit Properly Fenced (no fence on rig side if on site)	X Yes    No    Not Required (if site fully fenced)		
Pit Slopes intact	X Yes    No		
Adequate freeboard (liquid level 2 <u>vertical</u> feet from berm top)	X Yes    No    Not Applicable		
Free oil or sheen present on pit	Yes    X No		
Flare Pit free of liquids	X Yes    No    Not Applicable		
Comments:			
Inspector Signature:			
Printed Name: Weldon Higgins			
Title: rig consultant			
Date: 10/12/09		Phone: 505-320-4871	

Record Retention: Submit with Closure  
File: EH&S Well Files

Exploration & Production  
San Juan Basin Operations  
720 So. Main / PO Box 640  
Aztec, NM 87410  
505-634-4200 / 505-634-4205 fax



## Temporary Pit Inspection

### FACILITY INFORMATION

<b>Facility Name:</b> Rosa Unit #19D	<b>API #:</b> 30 - 039 - 30781
--------------------------------------	--------------------------------

<b>Pit Type:</b> Drilling        Workover        X Completion	<b>Inspection:</b> Daily (Rig)        Weekly (Tech)
---	---

Pit Liner intact (no visible tears)	X Yes    No    If No, Report to EH&S immediately	Date Reported:	Time
Pit Properly Fenced (no fence on rig side if on site)	X Yes    No    Not Required (if site fully fenced)		
Pit Slopes intact	X Yes    No		
Adequate freeboard (liquid level 2 <u>vertical</u> feet from berm top)	X Yes    No    Not Applicable		
Free oil or sheen present on pit	Yes    X No		
Flare Pit free of liquids	X Yes    No    Not Applicable		
Comments:			
Inspector Signature:			
Printed Name: Weldon Higgins			
Title: rig consultant			
Date: 10/11/09		Phone: 505-320-4871	

Record Retention: Submit with Closure  
File: EH&S Well Files

Exploration & Production  
San Juan Basin Operations  
720 So. Main / PO Box 640  
Aztec, NM 87410  
505-634-4200 / 505-634-4205 fax



## Temporary Pit Inspection

### FACILITY INFORMATION

Facility Name: Rosa Unit #19D	API #: 30 - 039 - 30781
-------------------------------	-------------------------

Pit Type:	Drilling	Workover	X Completion	Inspection:	Daily (Rig)	Weekly (Tech)
-----------	----------	----------	--------------	-------------	-------------	---------------

Pit Liner intact (no visible tears)	X Yes No If No, Report to EH&S immediately	Date Reported:	Time
Pit Properly Fenced (no fence on rig side if on site)	X Yes No Not Required (if site fully fenced)		
Pit Slopes intact	X Yes No		
Adequate freeboard (liquid level 2 vertical feet from berm top)	X Yes No Not Applicable		
Free oil or sheen present on pit	Yes X No		
Flare Pit free of liquids	X Yes No Not Applicable		
Comments:			
Inspector Signature:			
Printed Name: Weldon Higgins			
Title: rig consultant			
Date: 10/10/09		Phone: 505-320-4871	

Record Retention: Submit with Closure  
File: EH&S Well Files

Exploration & Production  
San Juan Basin Operations  
720 So. Main / PO Box 640  
Aztec, NM 87410  
505-634-4200 / 505-634-4205 fax



## Temporary Pit Inspection

### FACILITY INFORMATION

<b>Facility Name:</b> Rosa Unit #19D	<b>API #:</b> 30 - 039 - 30781
--------------------------------------	--------------------------------

<b>Pit Type:</b> Drilling        Workover        X Completion	<b>Inspection:</b> Daily (Rig)        Weekly (Tech)
---	---

Pit Liner intact (no visible tears)	X Yes    No    If No, Report to EH&S immediately	Date Reported:	Time
Pit Properly Fenced (no fence on rig side if on site)	X Yes    No    Not Required (if site fully fenced)		
Pit Slopes intact	X Yes    No		
Adequate freeboard (liquid level 2 <u>vertical</u> feet from berm top)	X Yes    No    Not Applicable		
Free oil or sheen present on pit	Yes    X No		
Flare Pit free of liquids	X Yes    No    Not Applicable		
Comments:			
Inspector Signature:			
Printed Name: Weldon Higgins			
Title: rig consultant			
Date: 10/09/09		Phone: 505-320-4871	

Record Retention: Submit with Closure  
File: EH&S Well Files

Exploration & Production  
San Juan Basin Operations  
720 So. Main / PO Box 640  
Aztec, NM 87410  
505-634-4200 / 505-634-4205 fax



## Temporary Pit Inspection

### FACILITY INFORMATION

Facility Name: Rosa Unit #19D	API #: 30 - 039 - 30781
-------------------------------	-------------------------

Pit Type:	Drilling	Workover	X Completion	Inspection:	Daily (Rig)	Weekly (Tech)
-----------	----------	----------	--------------	-------------	-------------	---------------

Pit Liner intact (no visible tears)	X Yes    No    If No, Report to EH&S immediately	Date Reported:	Time
Pit Properly Fenced (no fence on rig side if on site)	X Yes    No    Not Required (if site fully fenced)		
Pit Slopes intact	X Yes    No		
Adequate freeboard (liquid level 2 <u>vertical</u> feet from berm top)	X Yes    No    Not Applicable		
Free oil or sheen present on pit	Yes    X No		
Flare Pit free of liquids	X Yes    No    Not Applicable		
Comments:			
Inspector Signature:			
Printed Name: Weldon Higgins			
Title: rig consultant			
Date: 10/08/09		Phone: 505-320-4871	

Record Retention: Submit with Closure  
File: EH&S Well Files



Exploration & Production  
San Juan Basin Operations  
720 So. Main / PO Box 640  
Aztec, NM 87410  
505-634-4200 / 505-634-4205 fax



## Temporary Pit Inspection

### FACILITY INFORMATION

Facility Name: Rosa Unit #19D	API #: 30 - 039 - 30781
-------------------------------	-------------------------

Pit Type:	Drilling	Workover	X Completion	Inspection:	Daily (Rig)	Weekly (Tech)
-----------	----------	----------	--------------	-------------	-------------	---------------

Pit Liner intact (no visible tears)	X Yes    No    If No, Report to EH&S immediately	Date Reported:	Time
Pit Properly Fenced (no fence on rig side if on site)	X Yes    No    Not Required (if site fully fenced)		
Pit Slopes intact	X Yes    No		
Adequate freeboard (liquid level 2 <u>vertical</u> feet from berm top)	X Yes    No    Not Applicable		
Free oil or sheen present on pit	Yes    X No		
Flare Pit free of liquids	X Yes    No    Not Applicable		
Comments:			
Inspector Signature:			
Printed Name: Weldon Higgins			
Title: rig consultant			
Date: 10/07/09		Phone: 505-320-4871	

Record Retention: Submit with Closure  
File: EH&S Well Files

Exploration & Production  
San Juan Basin Operations  
720 So. Main / PO Box 640  
Aztec, NM 87410  
505-634-4200 / 505-634-4205 fax



## Temporary Pit Inspection

### FACILITY INFORMATION

Facility Name: Rosa Unit #19D	API #: 30 - 039 - 30781
-------------------------------	-------------------------

Pit Type:	Drilling	Workover	X Completion	Inspection:	Daily (Rig)	Weekly (Tech)
-----------	----------	----------	--------------	-------------	-------------	---------------

Pit Liner intact (no visible tears)	X Yes    No    If No, Report to EH&S immediately	Date Reported:	Time
Pit Properly Fenced (no fence on rig side if on site)	X Yes    No    Not Required (if site fully fenced)		
Pit Slopes intact	X Yes    No		
Adequate freeboard (liquid level 2 <u>vertical</u> feet from berm top)	X Yes    No    Not Applicable		
Free oil or sheen present on pit	Yes    X No		
Flare Pit free of liquids	X Yes    No    Not Applicable		
Comments:			
Inspector Signature:			
Printed Name: Weldon Higgins			
Title: rig consultant			
Date: 10/06/09		Phone: 505-320-4871	

Record Retention: Submit with Closure  
File: EH&S Well Files

Exploration & Production  
San Juan Basin Operations  
720 So. Main / PO Box 640  
Aztec, NM 87410  
505-634-4200 / 505-634-4205 fax



## Temporary Pit Inspection

### FACILITY INFORMATION

<b>Facility Name:</b> Rosa Unit #19D	<b>API #:</b> 30 - 039 - 30781
--------------------------------------	--------------------------------

<b>Pit Type:</b> Drilling        Workover        X Completion	<b>Inspection:</b> Daily (Rig)        Weekly (Tech)
---	---

Pit Liner intact (no visible tears)	X Yes    No    If No, Report to EH&S immediately	Date Reported:	Time
Pit Properly Fenced (no fence on rig side if on site)	X Yes    No    Not Required (if site fully fenced)		
Pit Slopes intact	X Yes    No		
Adequate freeboard (liquid level 2 <u>vertical</u> feet from berm top)	X Yes    No    Not Applicable		
Free oil or sheen present on pit	Yes    X No		
Flare Pit free of liquids	X Yes    No    Not Applicable		
Comments:			
Inspector Signature:			
Printed Name: Weldon Higgins			
Title: rig consultant			
Date: 10/05/09		Phone: 505-320-4871	

Record Retention: Submit with Closure  
File: EH&S Well Files

Exploration & Production  
San Juan Basin Operations  
720 So. Main / PO Box 640  
Aztec, NM 87410  
505-634-4200 / 505-634-4205 fax



## Temporary Pit Inspection

### FACILITY INFORMATION

Facility Name: Rosa Unit #19D	API #: 30 - 039 - 30781
-------------------------------	-------------------------

Pit Type: Drilling	Workover	X Completion	Inspection: Daily (Rig)	Weekly (Tech)
--------------------	----------	--------------	-------------------------	---------------

Pit Liner intact (no visible tears)	X Yes No If No, Report to EH&S immediately	Date Reported:	Time
Pit Properly Fenced (no fence on rig side if on site)	X Yes No Not Required (if site fully fenced)		
Pit Slopes intact	X Yes No		
Adequate freeboard (liquid level 2 vertical feet from berm top)	X Yes No Not Applicable		
Free oil or sheen present on pit	Yes X No		
Flare Pit free of liquids	X Yes No Not Applicable		
Comments:			
Inspector Signature:			
Printed Name: Weldon Higgins			
Title: rig consultant			
Date: 10/02/09		Phone: 505-320-4871	

Record Retention: Submit with Closure  
File: EH&S Well Files

Exploration & Production  
San Juan Basin Operations  
720 So. Main / PO Box 640  
Aztec, NM 87410  
505-634-4200 / 505-634-4205 fax



## Temporary Pit Inspection

### FACILITY INFORMATION

Facility Name: Rosa Unit #19D	API #: 30 - 039 - 30781
-------------------------------	-------------------------

Pit Type:	Drilling	Workover	X Completion	Inspection:	Daily (Rig)	Weekly (Tech)
-----------	----------	----------	--------------	-------------	-------------	---------------

Pit Liner intact (no visible tears)	X Yes	No	If No, Report to EH&S immediately	Date Reported:	Time
Pit Properly Fenced (no fence on rig side if on site)	X Yes	No	Not Required (if site fully fenced)		
Pit Slopes intact	X Yes	No			
Adequate freeboard (liquid level 2 <u>vertical</u> feet from berm top)	X Yes	No	Not Applicable		
Free oil or sheen present on pit	Yes	X No			
Flare Pit free of liquids	X Yes	No	Not Applicable		
Comments:					
Inspector Signature:					
Printed Name: Weldon Higgins					
Title: rig consultant					
Date: 9/24/09					
Phone: 505-320-4871					

Record Retention: Submit with Closure  
File: EH&S Well Files

Exploration & Production  
San Juan Basin Operations  
720 So. Main / PO Box 640  
Aztec, NM 87410  
505-634-4200 / 505-634-4205 fax



## Temporary Pit Inspection

### FACILITY INFORMATION

<b>Facility Name:</b> Rosa Unit #19D	<b>API #:</b> 30 - 039 - 30781
--------------------------------------	--------------------------------

<b>Pit Type:</b> Drilling        Workover        X Completion	<b>Inspection:</b> Daily (Rig)        Weekly (Tech)
---	---

Pit Liner intact (no visible tears)	X Yes    No    If No, Report to EH&S immediately	Date Reported:	Time
Pit Properly Fenced (no fence on rig side if on site)	X Yes    No    Not Required (if site fully fenced)		
Pit Slopes intact	X Yes    No		
Adequate freeboard (liquid level 2 vertical feet from berm top)	X Yes    No    Not Applicable		
Free oil or sheen present on pit	Yes    X No		
Flare Pit free of liquids	X Yes    No    Not Applicable		
Comments:			
Inspector Signature:			
Printed Name: Weldon Higgins			
Title: rig consultant			
Date: 9/23/09		Phone: 505-320-4871	

Record Retention: Submit with Closure  
File: EH&S Well Files

Exploration & Production  
San Juan Basin Operations  
720 So. Main / PO Box 640  
Aztec, NM 87410  
505-634-4200 / 505-634-4205 fax



## Temporary Pit Inspection

### FACILITY INFORMATION

Facility Name: Rosa Unit #19D	API #: 30 - 039 - 30781
-------------------------------	-------------------------

Pit Type: Drilling      Workover      X Completion	Inspection: Daily (Rig)      Weekly (Tech)
--	--

Pit Liner intact (no visible tears)	X Yes    No    If No, Report to EH&S immediately	Date Reported:	Time
Pit Properly Fenced (no fence on rig side if on site)	X Yes    No    Not Required (if site fully fenced)		
Pit Slopes intact	X Yes    No		
Adequate freeboard (liquid level 2 <u>vertical</u> feet from berm top)	X Yes    No    Not Applicable		
Free oil or sheen present on pit	Yes    X No		
Flare Pit free of liquids	X Yes    No    Not Applicable		
Comments:			
Inspector Signature:			
Printed Name: Weldon Higgins			
Title: rig consultant			
Date: 9/22/09		Phone: 505-320-4871	

Record Retention: Submit with Closure  
File: EH&S Well Files



Exploration & Production  
San Juan Basin Operations  
720 So. Main / PO Box 640  
Aztec, NM 87410  
505-634-4200 / 505-634-4205 fax

## Temporary Pit Inspection

### FACILITY INFORMATION

Facility Name: Rosa unit# 19-D	API #: 30-039-30781
--------------------------------	---------------------

Pit Type: <input checked="" type="checkbox"/> Drilling <input type="checkbox"/> Workover <input type="checkbox"/> Cavitation	Inspection: <input checked="" type="checkbox"/> Daily <input type="checkbox"/> Weekly <input type="checkbox"/> Monthly
--	--

Pit Liner intact (no visible tears)	<input checked="" type="checkbox"/> Yes <input type="checkbox"/> No If No, Report to EH&S immediately	Date / Time Reported:
Pit Properly Fenced (no fence on rig side if on site)	<input checked="" type="checkbox"/> Yes <input type="checkbox"/> No <input type="checkbox"/> Not Required (if site fully fenced)	
Pit Slopes intact	<input checked="" type="checkbox"/> Yes <input type="checkbox"/> No	
Adequate freeboard (liquid level 2 <u>vertical</u> feet from berm top)	<input checked="" type="checkbox"/> Yes <input type="checkbox"/> No <input type="checkbox"/> Not Applicable	
Free oil or sheen present on pit	<input type="checkbox"/> Yes <input checked="" type="checkbox"/> No	
Flare Pit free of liquids	<input checked="" type="checkbox"/> Yes <input type="checkbox"/> No <input type="checkbox"/> Not Applicable	
Comments:		
Inspector Signature: WILLIE MOCK		
Printed Name: WILLIE MOCK		
Title: Drlg Consultant ( TDCI )		
Date: 09/1/2009 Phone: ( 505 ) 7931276		

Record Retention: Submit with Closure  
File: EH&S





Exploration & Production  
San Juan Basin Operations  
720 So. Main / PO Box 640  
Aztec, NM 87410  
505-634-4200 / 505-634-4205 fax

## Temporary Pit Inspection

### FACILITY INFORMATION

Facility Name: Rosa unit# 19-D	API #: 30-039-30781
--------------------------------	---------------------

Pit Type: <input checked="" type="checkbox"/> Drilling <input type="checkbox"/> Workover <input type="checkbox"/> Cavitation	Inspection: <input checked="" type="checkbox"/> Daily <input type="checkbox"/> Weekly <input type="checkbox"/> Monthly
--	--

Pit Liner intact (no visible tears)	<input checked="" type="checkbox"/> Yes <input type="checkbox"/> No If No, Report to EH&S immediately	Date / Time Reported:
Pit Properly Fenced (no fence on rig side if on site)	<input checked="" type="checkbox"/> Yes <input type="checkbox"/> No <input type="checkbox"/> Not Required (if site fully fenced)	
Pit Slopes intact	<input checked="" type="checkbox"/> Yes <input type="checkbox"/> No	
Adequate freeboard (liquid level 2 vertical feet from berm top)	<input checked="" type="checkbox"/> Yes <input type="checkbox"/> No <input type="checkbox"/> Not Applicable	
Free oil or sheen present on pit	<input type="checkbox"/> Yes <input checked="" type="checkbox"/> No	
Flare Pit free of liquids	<input checked="" type="checkbox"/> Yes <input type="checkbox"/> No <input type="checkbox"/> Not Applicable	
Comments:		
Inspector Signature: WILLIE MOCK		
Printed Name: WILLIE MOCK		
Title: Drlg Consultant ( TDCI )		
Date: 08/31/2009 Phone: ( 505 ) 7931276		

Record Retention: Submit with Closure  
File: EH&S



Exploration & Production  
San Juan Basin Operations  
720 So. Main / PO Box 640  
Aztec, NM 87410  
505-634-4200 / 505-634-4205 fax

## Temporary Pit Inspection

### FACILITY INFORMATION

Facility Name: Rosa unit# 19-D	API #: 30-039-30781
--------------------------------	---------------------

Pit Type: <input checked="" type="checkbox"/> Drilling <input type="checkbox"/> Workover <input type="checkbox"/> Cavitation	Inspection: <input checked="" type="checkbox"/> Daily <input type="checkbox"/> Weekly <input type="checkbox"/> Monthly
--	--

Pit Liner intact (no visible tears)	<input checked="" type="checkbox"/> Yes <input type="checkbox"/> No If No, Report to EH&S immediately	Date / Time Reported:
Pit Properly Fenced (no fence on rig side if on site)	<input checked="" type="checkbox"/> Yes <input type="checkbox"/> No <input type="checkbox"/> Not Required (if site fully fenced)	
Pit Slopes intact	<input checked="" type="checkbox"/> Yes <input type="checkbox"/> No	
Adequate freeboard (liquid level 2 <u>vertical</u> feet from berm top)	<input checked="" type="checkbox"/> Yes <input type="checkbox"/> No <input type="checkbox"/> Not Applicable	
Free oil or sheen present on pit	<input type="checkbox"/> Yes <input checked="" type="checkbox"/> No	
Flare Pit free of liquids	<input checked="" type="checkbox"/> Yes <input type="checkbox"/> No <input type="checkbox"/> Not Applicable	
Comments:		
Inspector Signature: WILLIE MOCK		
Printed Name: WILLIE MOCK		
Title: Drlg Consultant ( TDCI )		
Date: 08/30/2009 Phone: ( 505 ) 7931276		

Record Retention: Submit with Closure  
File: EH&S



Exploration & Production  
San Juan Basin Operations

720 So. Main / PO Box 640  
Aztec, NM 87410  
505-634-4200 / 505-634-4205 fax

## Temporary Pit Inspection

### FACILITY INFORMATION

Facility Name: Rosa unit# 19-D	API #: 30-039-30781
--------------------------------	---------------------

Pit Type: <input checked="" type="checkbox"/> Drilling <input type="checkbox"/> Workover <input type="checkbox"/> Cavitation	Inspection: <input checked="" type="checkbox"/> Daily <input type="checkbox"/> Weekly <input type="checkbox"/> Monthly
--	--

Pit Liner intact (no visible tears)	<input checked="" type="checkbox"/> Yes <input type="checkbox"/> No If No, Report to EH&S immediately	Date / Time Reported:
Pit Properly Fenced (no fence on rig side if on site)	<input checked="" type="checkbox"/> Yes <input type="checkbox"/> No <input type="checkbox"/> Not Required (if site fully fenced)	
Pit Slopes intact	<input checked="" type="checkbox"/> Yes <input type="checkbox"/> No	
Adequate freeboard (liquid level 2 vertical feet from berm top)	<input checked="" type="checkbox"/> Yes <input type="checkbox"/> No <input type="checkbox"/> Not Applicable	
Free oil or sheen present on pit	<input type="checkbox"/> Yes <input checked="" type="checkbox"/> No	
Flare Pit free of liquids	<input checked="" type="checkbox"/> Yes <input type="checkbox"/> No <input type="checkbox"/> Not Applicable	
Comments:		
Inspector Signature: WILLIE MOCK		
Printed Name: WILLIE MOCK		
Title: Drlg Consultant ( TDCI )		
Date: 08/29/2009 Phone: ( 505 ) 7931276		

Record Retention: Submit with Closure  
File: EH&S



Exploration & Production  
San Juan Basin Operations  
720 So. Main / PO Box 640  
Aztec, NM 87410  
505-634-4200 / 505-634-4205 fax

## Temporary Pit Inspection

### FACILITY INFORMATION

Facility Name: Rosa unit# 19-D	API #: 30-039-30781
--------------------------------	---------------------

Pit Type: <input checked="" type="checkbox"/> Drilling <input type="checkbox"/> Workover <input type="checkbox"/> Cavitation	Inspection: <input checked="" type="checkbox"/> Daily <input type="checkbox"/> Weekly <input type="checkbox"/> Monthly
--	--

Pit Liner intact (no visible tears)	<input checked="" type="checkbox"/> Yes <input type="checkbox"/> No If No, Report to EH&S immediately	Date / Time Reported:
Pit Properly Fenced (no fence on rig side if on site)	<input checked="" type="checkbox"/> Yes <input type="checkbox"/> No <input type="checkbox"/> Not Required (if site fully fenced)	
Pit Slopes intact	<input checked="" type="checkbox"/> Yes <input type="checkbox"/> No	
Adequate freeboard (liquid level 2 vertical feet from berm top)	<input checked="" type="checkbox"/> Yes <input type="checkbox"/> No <input type="checkbox"/> Not Applicable	
Free oil or sheen present on pit	<input type="checkbox"/> Yes <input checked="" type="checkbox"/> No	
Flare Pit free of liquids	<input checked="" type="checkbox"/> Yes <input type="checkbox"/> No <input type="checkbox"/> Not Applicable	
Comments:		
Inspector Signature: WILLIE MOCK		
Printed Name: WILLIE MOCK		
Title: Drlg Consultant ( TDCI )		
Date: 08/28/2009 Phone: ( 505 ) 7931276		

Record Retention: Submit with Closure  
File: EH&S



Exploration & Production  
San Juan Basin Operations  
720 So. Main / PO Box 640  
Aztec, NM 87410  
505-634-4200 / 505-634-4205 fax

## Temporary Pit Inspection

### FACILITY INFORMATION

Facility Name: Rosa unit# 19-D	API #: 30-039-30781
--------------------------------	---------------------

Pit Type: <input checked="" type="checkbox"/> Drilling <input type="checkbox"/> Workover <input type="checkbox"/> Cavitation	Inspection: <input checked="" type="checkbox"/> Daily <input type="checkbox"/> Weekly <input type="checkbox"/> Monthly
--	--

Pit Liner intact (no visible tears)	<input checked="" type="checkbox"/> Yes <input type="checkbox"/> No If No, Report to EH&S immediately	Date / Time Reported:
Pit Properly Fenced (no fence on rig side if on site)	<input checked="" type="checkbox"/> Yes <input type="checkbox"/> No <input type="checkbox"/> Not Required (if site fully fenced)	
Pit Slopes intact	<input checked="" type="checkbox"/> Yes <input type="checkbox"/> No	
Adequate freeboard (liquid level 2 vertical feet from berm top)	<input checked="" type="checkbox"/> Yes <input type="checkbox"/> No <input type="checkbox"/> Not Applicable	
Free oil or sheen present on pit	<input type="checkbox"/> Yes <input checked="" type="checkbox"/> No	
Flare Pit free of liquids	<input checked="" type="checkbox"/> Yes <input type="checkbox"/> No <input type="checkbox"/> Not Applicable	
Comments:		
Inspector Signature: WILLIE MOCK		
Printed Name: WILLIE MOCK		
Title: Drlg Consultant ( TDCI )		
Date: 08/27/2009 Phone: ( 505 ) 7931276		

Record Retention: Submit with Closure  
File: EH&S



Exploration & Production  
San Juan Basin Operations  
720 So. Main / PO Box 640  
Aztec, NM 87410  
505-634-4200 / 505-634-4205 fax

## Temporary Pit Inspection

### FACILITY INFORMATION

Facility Name: Rosa unit# 19-D	API #: 30-039-30781
--------------------------------	---------------------

Pit Type: <input checked="" type="checkbox"/> Drilling <input type="checkbox"/> Workover <input type="checkbox"/> Cavitation	Inspection: <input checked="" type="checkbox"/> Daily <input type="checkbox"/> Weekly <input type="checkbox"/> Monthly
--	--

Pit Liner intact (no visible tears)	<input checked="" type="checkbox"/> Yes <input type="checkbox"/> No If No, Report to EH&S immediately	Date / Time Reported:
Pit Properly Fenced (no fence on rig side if on site)	<input checked="" type="checkbox"/> Yes <input type="checkbox"/> No <input type="checkbox"/> Not Required (if site fully fenced)	
Pit Slopes intact	<input checked="" type="checkbox"/> Yes <input type="checkbox"/> No	
Adequate freeboard (liquid level 2 vertical feet from berm top)	<input checked="" type="checkbox"/> Yes <input type="checkbox"/> No <input type="checkbox"/> Not Applicable	
Free oil or sheen present on pit	<input type="checkbox"/> Yes <input checked="" type="checkbox"/> No	
Flare Pit free of liquids	<input checked="" type="checkbox"/> Yes <input type="checkbox"/> No <input type="checkbox"/> Not Applicable	
Comments:		
Inspector Signature: WILLIE MOCK		
Printed Name: WILLIE MOCK		
Title: Drlg Consultant ( TDCI )		
Date: 08/26/2009 Phone: ( 505 ) 7931276		

Record Retention: Submit with Closure  
File: EH&S

Exploration & Production  
San Juan Basin Operations  
720 So. Main / PO Box 640  
Aztec, NM 87410  
505-634-4200 / 505-634-4205 fax



## Temporary Pit Inspection

### FACILITY INFORMATION

dk/me/mv 19d	API #: 30=039-30781
--------------	---------------------

<b>Pit Type:</b> x <input type="checkbox"/> Drilling <input type="checkbox"/> Workover <input type="checkbox"/> Cavitation	<b>Inspection:</b> x <input type="checkbox"/> Daily (Rig) <input type="checkbox"/> Weekly (Tech)
--	--

Pit Liner intact (no visible tears)	x <input type="checkbox"/> Yes <input type="checkbox"/> No If No, Report to EH&S immediately	Date / Time Repo 4/26/10
Pit Properly Fenced (no fence on rig side if on site)	x <input type="checkbox"/> Yes <input type="checkbox"/> No <input type="checkbox"/> Not Required (if site fully fenced)	
Pit Slopes intact	x <input type="checkbox"/> Yes <input type="checkbox"/> No	
Adequate freeboard (liquid level 2 <u>vertical</u> feet from berm top)	x <input type="checkbox"/> Yes <input type="checkbox"/> No <input type="checkbox"/> Not Applicable	
Does pit have oil or sheen on it?	<input type="checkbox"/> Yes <input checked="" type="checkbox"/> No	
Flare Pit free of liquids	x <input type="checkbox"/> Yes <input type="checkbox"/> No <input type="checkbox"/> Not Applicable	
Comments:		
Inspector Signature: Tommy Clements		
Printed Name: Tommy Clements		
Title:		
Date:		
Phone:		

Record Retention: Submit with Closure  
File: EH&S Well Files

Exploration & Production  
San Juan Basin Operations  
720 So. Main / PO Box 640  
Aztec, NM 87410  
505-634-4200 / 505-634-4205 fax



## Temporary Pit Inspection

### FACILITY INFORMATION

dk/me/mv 19d	API #: 30=039-30781
--------------	---------------------

<b>Pit Type:</b> x <input type="checkbox"/> Drilling <input type="checkbox"/> Workover <input type="checkbox"/> Cavitation	<b>Inspection:</b> x <input type="checkbox"/> Daily (Rig) <input type="checkbox"/> Weekly (Tech)
--	--

Pit Liner intact (no visible tears)	x <input type="checkbox"/> Yes <input type="checkbox"/> No If No, Report to EH&S immediately	Date / Time Repo 4/12/10
Pit Properly Fenced (no fence on rig side if on site)	x <input type="checkbox"/> Yes <input type="checkbox"/> No <input type="checkbox"/> Not Required (if site fully fenced)	
Pit Slopes intact	x <input type="checkbox"/> Yes <input type="checkbox"/> No	
Adequate freeboard (liquid level 2 <u>vertical</u> feet from berm top)	x <input type="checkbox"/> Yes <input type="checkbox"/> No <input type="checkbox"/> Not Applicable	
Does pit have oil or sheen on it?	<input type="checkbox"/> Yes <input checked="" type="checkbox"/> No	
Flare Pit free of liquids	x <input type="checkbox"/> Yes <input type="checkbox"/> No <input type="checkbox"/> Not Applicable	
Comments:		
Inspector Signature: Tommy Clements		
Printed Name: Tommy Clements		
Title:		
Date:		
Phone:		

Record Retention: Submit with Closure  
File: EH&S Well Files



Exploration & Production  
San Juan Basin Operations  
720 So. Main / PO Box 640  
Aztec, NM 87410  
505-634-4200 / 505-634-4205 fax



## Temporary Pit Inspection

### FACILITY INFORMATION

dk/me/mv 19d	API #: 30=039-30781
--------------	---------------------

Pit Type: x <input type="checkbox"/> Drilling <input type="checkbox"/> Workover <input type="checkbox"/> Cavitation	Inspection: x <input type="checkbox"/> Daily (Rig) <input type="checkbox"/> Weekly (Tech)
--	---

Pit Liner intact (no visible tears)	x <input type="checkbox"/> Yes <input type="checkbox"/> No If No, Report to EH&S immediately	Date / Time Reported to EH&S: 3-30-10 9am
Pit Properly Fenced (no fence on rig side if on site)	x <input type="checkbox"/> Yes <input type="checkbox"/> No <input type="checkbox"/> Not Required (if site fully fenced)	
Pit Slopes intact	x <input type="checkbox"/> Yes <input type="checkbox"/> No	
Adequate freeboard (liquid level 2 <u>vertical</u> feet from berm top)	x <input type="checkbox"/> Yes <input type="checkbox"/> No <input type="checkbox"/> Not Applicable	
Does pit have oil or sheen on it?	<input type="checkbox"/> Yes <input checked="" type="checkbox"/> No	
Flare Pit free of liquids	x <input type="checkbox"/> Yes <input type="checkbox"/> No <input type="checkbox"/> Not Applicable	
Comments:		
Inspector Signature: Tommy Clements		
Printed Name: Tommy Clements		
Title:		
Date: Phone:		

Record Retention: Submit with Closure  
File: EH&S Well Files

9) 11#



1950

ROSA WYV

L. 100

MA



Exploration & Production  
PO Box 640  
Aztec, NM 87410  
505/634-4219  
505/634-4205 fax



## Transmittal

**To:** Brandon Powell  
NMOCD  
1000 Rio Brazos Road  
Aztec, New Mexico 87410

**From:** Tasha Meador  
San Juan- Permitting Technician  
505-634-4241  
tasha.meador@williams.com

**Date:**

**Re:** Supplemental Submittal

Temporary Pit Closure report: NMOCD Permit # 7084

Enclosed and per your direction, please find our supplemental submittal for the referenced temporary pit closure report.

Please advise if additional information is required. Thank you for your time and consideration. Please call or contact me if there are any questions.

Respectfully resubmitted,

Tasha Meador  
Williams Exploration & Production  
721 S Main Aztec, NM  
Office: 505-634-4200  
Direct: 505-634-4241  
Fax: 505-634-4205  
[tasha.meador@williams.com](mailto:tasha.meador@williams.com)

Encl:

Submit To Appropriate District Office Two Copies District I 1625 N French Dr., Hobbs, NM 88240 District II 1301 W. Grand Avenue, Artesia, NM 88210 District III 1000 Rio Brazos Rd., Aztec, NM 87410 District IV 1220 S St. Francis Dr., Santa Fe, NM 87505		<b>State of New Mexico</b> <b>Energy, Minerals and Natural Resources</b>  <b>Oil Conservation Division</b> <b>1220 South St. Francis Dr.</b> <b>Santa Fe, NM 87505</b>				<b>Form C-105</b> July 17, 2008				
								1. WELL API NO. 30-039-30781		
								2. Type of Lease <input type="checkbox"/> STATE <input type="checkbox"/> FEE <input checked="" type="checkbox"/> FED/INDIAN		
								3. State Oil & Gas Lease No SF-078767		
<b>WELL COMPLETION OR RECOMPLETION REPORT AND LOG</b>										
4. Reason for filing  <input type="checkbox"/> <b>COMPLETION REPORT</b> (Fill in boxes #1 through #31 for State and Fee wells only)  <input checked="" type="checkbox"/> <b>C-144 CLOSURE ATTACHMENT</b> (Fill in boxes #1 through #9, #15 Date Rig Released and #32 and/or #33; attach this and the plat to the C-144 closure report in accordance with 19.15.17.13 K NMAC)						5. Lease Name or Unit Agreement Name Rosa				
7. Type of Completion. <input checked="" type="checkbox"/> NEW WELL <input type="checkbox"/> WORKOVER <input type="checkbox"/> DEEPENING <input type="checkbox"/> PLUGBACK <input type="checkbox"/> DIFFERENT RESERVOIR <input type="checkbox"/> OTHER						6. Well Number Rosa Unit #019D				
8. Name of Operator    WILLIAMS PRODUCTION, LLC						9. OGRID    120782				
10. Address of Operator    P.O BOX 640    AZTEC, NM 87410						11. Pool name or Wildcat				
12. Location	Unit Ltr	Section	Township	Range	Lot	Feet from the	N/S Line	Feet from the	E/W Line	County
Surface:										
BH:										
13. Date Spudded	14. Date T D Reached	15. Date Rig Released 11/16/2009		16. Date Completed (Ready to Produce)			17. Elevations (DF and RKB, RT, GR, etc.)			
18. Total Measured Depth of Well		19. Plug Back Measured Depth		20. Was Directional Survey Made?			21. Type Electric and Other Logs Run			
22. Producing Interval(s), of this completion - Top, Bottom, Name										
<b>23 CASING RECORD (Report all strings set in well)</b>										
CASING SIZE		WEIGHT LB./FT.		DEPTH SET		HOLE SIZE		CEMENTING RECORD		AMOUNT PULLED
24. LINER RECORD					25. TUBING RECORD					
SIZE	TOP	BOTTOM	SACKS CEMENT	SCREEN	SIZE	DEPTH SET	PACKER SET			
26. Perforation record (interval, size, and number)					27. ACID, SHOT, FRACTURE, CEMENT, SQUEEZE, ETC.					
					DEPTH INTERVAL		AMOUNT AND KIND MATERIAL USED			
<b>28. PRODUCTION</b>										
Date First Production		Production Method ( <i>Flowing, gas lift, pumping - Size and type pump</i> )				Well Status ( <i>Prod. or Shut-in</i> )				
Date of Test	Hours Tested	Choke Size	Prod'n For Test Period	Oil - Bbl	Gas - MCF	Water - Bbl	Gas - Oil Ratio			
Flow Tubing Press.	Casing Pressure	Calculated 24-Hour Rate	Oil - Bbl	Gas - MCF	Water - Bbl.	Oil Gravity - API - ( <i>Corr.</i> )				
29. Disposition of Gas ( <i>Sold, used for fuel, vented, etc.</i> )							30. Test Witnessed By			
31. List Attachments										
32. If a temporary pit was used at the well, attach a plat with the location of the temporary pit.										
33. If an on-site burial was used at the well, report the exact location of the on-site burial:										
Latitude 36.88330 Longitude, 107.42088					NAD 1927 1983					
I hereby certify that the information shown on both sides of this form is true and complete to the best of my knowledge and belief										
Tasha Meador      Printed Name										
Signature <i>Tasha Meador</i>				Title    Permit Technician		Date    8/29/11				
E-mail Address: tasha.meador@williams.com										

District I  
1625 N French Dr., Hobbs, NM 88240  
District II  
1301 W. Grand Avenue, Artesia, NM 88210

District III  
1000 Rio Brazos Rd., Aztec, NM 87410

District IV  
1220 S. St. Francis Dr., Santa Fe, NM 87505

State of New Mexico  
Energy, Minerals & Natural Resources Department

OIL CONSERVATION DIVISION  
1220 South St. Francis Dr.  
Santa Fe, NM 87505

Form C-102  
Revised October 12, 2005  
Instructions on back  
Submit to Appropriate District Office  
State Lease - 4 Copies  
Fee Lease - 3 Copies

☐ AMENDED REPORT

WELL LOCATION AND ACREAGE DEDICATION PLAT

*API Number	*Pool Code	*Pool Name
	97232 / 72319 / 71599	BASIN MANCOS / BLANCO MESAVERDE / BASIN DAKOTA
*Property Code	*Property Name	*Well Number
17033	ROSA UNIT	19D
*OGRID No.	*Operator Name	*Elevation
120782	WILLIAMS PRODUCTION COMPANY	6311'

<sup>10</sup> Surface Location

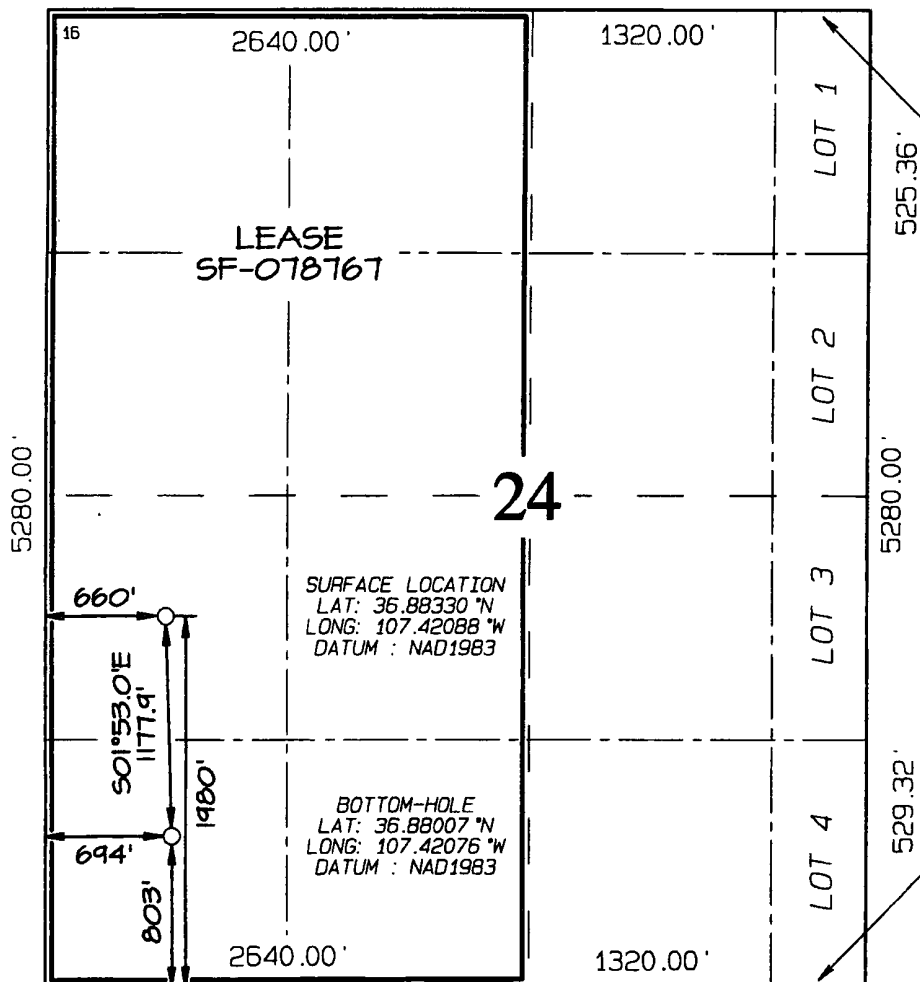
UL or lot no.	Section	Township	Range	Lot Idh	Feet from the	North/South line	Feet from the	East/West line	County
L	24	31N	6W		1980	SOUTH	660	WEST	RIO ARRIBA

<sup>11</sup> Bottom Hole Location If Different From Surface

UL or lot no.	Section	Township	Range	Lot Idh	Feet from the	North/South line	Feet from the	East/West line	County
M	24	31N	6W		803	SOUTH	694	WEST	RIO ARRIBA

<sup>12</sup> Dedicated Acres	<sup>13</sup> Joint or Infill	<sup>14</sup> Consolidation Code	<sup>15</sup> Order No.
320.0 Acres - (W/2)			

NO ALLOWABLE WILL BE ASSIGNED TO THIS COMPLETION UNTIL ALL INTERESTS HAVE BEEN CONSOLIDATED  
OR A NON-STANDARD UNIT HAS BEEN APPROVED BY THE DIVISION



<sup>17</sup> OPERATOR CERTIFICATION

I hereby certify that the information contained herein is true and complete to the best of my knowledge and belief, and that this organization either owns a working interest or unleased mineral interest in the land including the proposed bottom-hole location or has a right to drill this well at this location pursuant to a contract with an owner of such a mineral or working interest, or to a voluntary pooling agreement or a compulsory pooling order heretofore entered by the division.

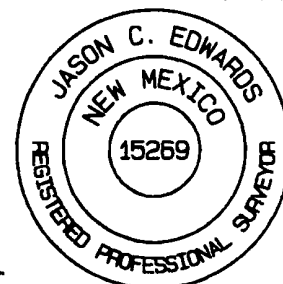
Tasha Meador 8/29/11  
Signature Date  
Tasha Meador  
Printed Name

<sup>18</sup> SURVEYOR CERTIFICATION

I hereby certify that the well location shown on this plat was plotted from field notes of actual surveys made by me or under my supervision, and that the same is true and correct to the best of my belief.

Date Revised: SEPTEMBER 16, 2009  
Survey Date: FEBRUARY 26, 2009

Signature and Seal of Professional Surveyor



JASON C. EDWARDS  
Certificate Number 15269