

District I  
1625 N French Dr , Hobbs, NM 88240  
District II  
1301 W Grand Avenue, Artesia, NM 88210  
District III  
1000 Rio Brazos Road, Aztec, NM 87410  
District IV  
1220 S St Francis Dr , Santa Fe, NM 87505

State of New Mexico  
Energy Minerals and Natural Resources  
Department  
Oil Conservation Division  
1220 South St. Francis Dr.  
Santa Fe, NM 87505

Form C-144  
July 21, 2008

For temporary pits, closed-loop systems, and below-grade tanks, submit to the appropriate NMOCD District Office.  
For permanent pits and exceptions submit to the Santa Fe Environmental Bureau office and provide a copy to the appropriate NMOCD District Office.

Pit, Closed-Loop System, Below-Grade Tank, or  
Proposed Alternative Method Permit or Closure Plan Application

Type of action: ☐ Permit of a pit, closed-loop system, below-grade tank, or proposed alternative method  
☒ Closure of a pit, closed-loop system, below-grade tank, or proposed alternative method  
☐ Modification to an existing permit  
☐ Closure plan only submitted for an existing permitted or non-permitted pit, closed-loop system, below-grade tank, or proposed alternative method

**Instructions: Please submit one application (Form C-144) per individual pit, closed-loop system, below-grade tank or alternative request**

Please be advised that approval of this request does not relieve the operator of liability should operations result in pollution of surface water, ground water or the environment. Nor does approval relieve the operator of its responsibility to comply with any other applicable governmental authority's rules, regulations or ordinances.

1.  
Operator: Williams Operating Co, LLC OGRID #: 120782  
Address PO Box 640 / 721 S Main Aztec, NM 87410  
Facility or well name: Rosa Unit 166B  
API Number 3003929841 OCD Permit Number: \_\_\_\_\_  
U/L or Qtr/Qtr G Section 30 Township 31N Range 5W County: Rio Arriba  
Center of Proposed Design: Latitude 36 87151N Longitude -107 40256 W NAD: ☒ 1927 ☐ 1983  
Surface Owner: ☒ Federal ☐ State ☐ Private ☐ Tribal Trust or Indian Allotment

2.  
☒ **Pit:** Subsection F or G of 19.15.17.11 NMAC  
Temporary: ☒ Drilling ☐ Workover  
☐ Permanent ☐ Emergency ☐ Cavitation ☐ P&A  
☐ Lined ☐ Unlined Liner type: Thickness 20 mil ☒ LLDPE ☐ HDPE ☐ PVC ☐ Other \_\_\_\_\_  
☒ String-Reinforced  
Liner Seams: ☒ Welded ☒ Factory ☐ Other \_\_\_\_\_ Volume 20,000 bbl Dimensions: L 140' x W 70' x D 12'

3.  
☐ **Closed-loop System:** Subsection H of 19.15.17.11 NMAC  
Type of Operation ☐ P&A ☐ Drilling a new well ☐ Workover or Drilling (Applies to activities which require prior approval of a permit or notice of intent)  
☐ Drying Pad ☐ Above Ground Steel Tanks ☐ Haul-off Bins ☐ Other \_\_\_\_\_  
☐ Lined ☐ Unlined Liner type: Thickness \_\_\_\_\_ mil ☐ LLDPE ☐ HDPE ☐ PVC ☐ Other \_\_\_\_\_  
Liner Seams: ☐ Welded ☐ Factory ☐ Other \_\_\_\_\_

4.  
☐ **Below-grade tank:** Subsection I of 19.15.17.11 NMAC  
Volume: \_\_\_\_\_ bbl Type of fluid: \_\_\_\_\_  
Tank Construction material: \_\_\_\_\_  
☐ Secondary containment with leak detection ☐ Visible sidewalls, liner, 6-inch lift and automatic overflow shut-off  
☐ Visible sidewalls and liner ☐ Visible sidewalls only ☐ Other \_\_\_\_\_  
Liner type Thickness \_\_\_\_\_ mil ☐ HDPE ☐ PVC ☐ Other \_\_\_\_\_

5.  
☐ **Alternative Method:**  
Submittal of an exception request is required. Exceptions must be submitted to the Santa Fe Environmental Bureau office for consideration of approval.



8/17/2010

63

6.

**Fencing:** Subsection D of 19.15.17.11 NMAC (*Applies to permanent pits, temporary pits, and below-grade tanks*)

- ☐ Chain link, six feet in height, two strands of barbed wire at top (*Required if located within 1000 feet of a permanent residence, school, hospital, institution or church*)
- ☐ Four foot height, four strands of barbed wire evenly spaced between one and four feet
- ☒ Alternate Please specify \_\_\_\_\_ Per BLM Specifications in APD \_\_\_\_\_

7.

**Netting:** Subsection E of 19.15.17.11 NMAC (*Applies to permanent pits and permanent open top tanks*)

- ☐ Screen ☐ Netting ☐ Other \_\_\_\_\_
- ☐ Monthly inspections (If netting or screening is not physically feasible)

8.

**Signs:** Subsection C of 19 15 17.11 NMAC

- ☐ 12"x 24", 2" lettering, providing Operator's name, site location, and emergency telephone numbers
- ☒ Signed in compliance with 19 15.3 103 NMAC

9.

**Administrative Approvals and Exceptions:**

Justifications and/or demonstrations of equivalency are required Please refer to 19 15.17 NMAC for guidance.

**Please check a box if one or more of the following is requested, if not leave blank:**

- ☒ Administrative approval(s). Requests must be submitted to the appropriate division district or the Santa Fe Environmental Bureau office for consideration of approval.
- ☐ Exception(s). Requests must be submitted to the Santa Fe Environmental Bureau office for consideration of approval.

10.

**Siting Criteria (regarding permitting):** 19.15.17 10 NMAC

**Instructions:** *The applicant must demonstrate compliance for each siting criteria below in the application. Recommendations of acceptable source material are provided below. Requests regarding changes to certain siting criteria may require administrative approval from the appropriate district office or may be considered an exception which must be submitted to the Santa Fe Environmental Bureau office for consideration of approval. Applicant must attach justification for request. Please refer to 19.15.17.10 NMAC for guidance. Siting criteria does not apply to drying pads or above-grade tanks associated with a closed-loop system.*

Ground water is less than 50 feet below the bottom of the temporary pit, permanent pit, or below-grade tank. - NM Office of the State Engineer - iWATERS database search, USGS; Data obtained from nearby wells	<input type="checkbox"/> Yes <input checked="" type="checkbox"/> No
Within 300 feet of a continuously flowing watercourse, or 200 feet of any other significant watercourse or lakebed, sinkhole, or playa lake (measured from the ordinary high-water mark) - Topographic map, Visual inspection (certification) of the proposed site	<input type="checkbox"/> Yes <input checked="" type="checkbox"/> No
Within 300 feet from a permanent residence, school, hospital, institution, or church in existence at the time of initial application. ( <i>Applies to temporary, emergency, or cavitation pits and below-grade tanks</i> ) - Visual inspection (certification) of the proposed site, Aerial photo; Satellite image	<input type="checkbox"/> Yes <input checked="" type="checkbox"/> No <input type="checkbox"/> NA
Within 1000 feet from a permanent residence, school, hospital, institution, or church in existence at the time of initial application. ( <i>Applies to permanent pits</i> ) - Visual inspection (certification) of the proposed site; Aerial photo, Satellite image	<input type="checkbox"/> Yes <input type="checkbox"/> No <input checked="" type="checkbox"/> NA
Within 500 horizontal feet of a private, domestic fresh water well or spring that less than five households use for domestic or stock watering purposes, or within 1000 horizontal feet of any other fresh water well or spring, in existence at the time of initial application - NM Office of the State Engineer - iWATERS database search; Visual inspection (certification) of the proposed site	<input type="checkbox"/> Yes <input checked="" type="checkbox"/> No
Within incorporated municipal boundaries or within a defined municipal fresh water well field covered under a municipal ordinance adopted pursuant to NMSA 1978, Section 3-27-3, as amended. - Written confirmation or verification from the municipality, Written approval obtained from the municipality	<input type="checkbox"/> Yes <input checked="" type="checkbox"/> No
Within 500 feet of a wetland - US Fish and Wildlife Wetland Identification map, Topographic map; Visual inspection (certification) of the proposed site	<input type="checkbox"/> Yes <input checked="" type="checkbox"/> No
Within the area overlying a subsurface mine - Written confirmation or verification or map from the NM EMNRD-Mining and Mineral Division	<input type="checkbox"/> Yes <input checked="" type="checkbox"/> No
Within an unstable area - Engineering measures incorporated into the design; NM Bureau of Geology & Mineral Resources; USGS; NM Geological Society, Topographic map	<input type="checkbox"/> Yes <input checked="" type="checkbox"/> No
Within a 100-year floodplain. - FEMA map	<input type="checkbox"/> Yes <input checked="" type="checkbox"/> No

11.

**Temporary Pits, Emergency Pits, and Below-grade Tanks Permit Application Attachment Checklist:** Subsection B of 19.15.17.9 NMAC**Instructions:** Each of the following items must be attached to the application. Please indicate, by a check mark in the box, that the documents are attached.

- ☒ Hydrogeologic Report (Below-grade Tanks) - based upon the requirements of Paragraph (4) of Subsection B of 19.15.17.9 NMAC
- ☒ Hydrogeologic Data (Temporary and Emergency Pits) - based upon the requirements of Paragraph (2) of Subsection B of 19.15.17.9 NMAC
- ☒ Siting Criteria Compliance Demonstrations - based upon the appropriate requirements of 19.15.17.10 NMAC
- ☒ Design Plan - based upon the appropriate requirements of 19.15.17.11 NMAC
- ☒ Operating and Maintenance Plan - based upon the appropriate requirements of 19.15.17.12 NMAC
- ☒ Closure Plan (Please complete Boxes 14 through 18, if applicable) - based upon the appropriate requirements of Subsection C of 19.15.17.9 NMAC and 19.15.17.13 NMAC

☐ Previously Approved Design (attach copy of design) API Number: \_\_\_\_\_ or Permit Number: \_\_\_\_\_

12.

**Closed-loop Systems Permit Application Attachment Checklist:** Subsection B of 19.15.17.9 NMAC**Instructions:** Each of the following items must be attached to the application. Please indicate, by a check mark in the box, that the documents are attached.

- ☐ Geologic and Hydrogeologic Data (only for on-site closure) - based upon the requirements of Paragraph (3) of Subsection B of 19.15.17.9 NMAC
- ☐ Siting Criteria Compliance Demonstrations (only for on-site closure) - based upon the appropriate requirements of 19.15.17.10 NMAC
- ☐ Design Plan - based upon the appropriate requirements of 19.15.17.11 NMAC
- ☐ Operating and Maintenance Plan - based upon the appropriate requirements of 19.15.17.12 NMAC
- ☐ Closure Plan (Please complete Boxes 14 through 18, if applicable) - based upon the appropriate requirements of Subsection C of 19.15.17.9 NMAC and 19.15.17.13 NMAC

☐ Previously Approved Design (attach copy of design) API Number: \_\_\_\_\_

☐ Previously Approved Operating and Maintenance Plan API Number: \_\_\_\_\_ (Applies only to closed-loop system that use above ground steel tanks or haul-off bins and propose to implement waste removal for closure)

13.

**Permanent Pits Permit Application Checklist:** Subsection B of 19.15.17.9 NMAC**Instructions:** Each of the following items must be attached to the application. Please indicate, by a check mark in the box, that the documents are attached.

- ☐ Hydrogeologic Report - based upon the requirements of Paragraph (1) of Subsection B of 19.15.17.9 NMAC
- ☐ Siting Criteria Compliance Demonstrations - based upon the appropriate requirements of 19.15.17.10 NMAC
- ☐ Climatological Factors Assessment
- ☐ Certified Engineering Design Plans - based upon the appropriate requirements of 19.15.17.11 NMAC
- ☐ Dike Protection and Structural Integrity Design - based upon the appropriate requirements of 19.15.17.11 NMAC
- ☐ Leak Detection Design - based upon the appropriate requirements of 19.15.17.11 NMAC
- ☐ Liner Specifications and Compatibility Assessment - based upon the appropriate requirements of 19.15.17.11 NMAC
- ☐ Quality Control/Quality Assurance Construction and Installation Plan
- ☐ Operating and Maintenance Plan - based upon the appropriate requirements of 19.15.17.12 NMAC
- ☐ Freeboard and Overtopping Prevention Plan - based upon the appropriate requirements of 19.15.17.11 NMAC
- ☐ Nuisance or Hazardous Odors, including H<sub>2</sub>S, Prevention Plan
- ☐ Emergency Response Plan
- ☐ Oil Field Waste Stream Characterization
- ☐ Monitoring and Inspection Plan
- ☐ Erosion Control Plan
- ☐ Closure Plan - based upon the appropriate requirements of Subsection C of 19.15.17.9 NMAC and 19.15.17.13 NMAC

14.

**Proposed Closure:** 19.15.17.13 NMAC**Instructions:** Please complete the applicable boxes, Boxes 14 through 18, in regards to the proposed closure plan.

Type. ☒ Drilling ☐ Workover ☐ Emergency ☐ Cavitation ☐ P&A ☐ Permanent Pit ☐ Below-grade Tank ☐ Closed-loop System

☐ Alternative

Proposed Closure Method: ☐ Waste Excavation and Removal

☐ Waste Removal (Closed-loop systems only)

☒ On-site Closure Method (Only for temporary pits and closed-loop systems)

☒ In-place Burial ☐ On-site Trench Burial

☐ Alternative Closure Method (Exceptions must be submitted to the Santa Fe Environmental Bureau for consideration)

15.

**Waste Excavation and Removal Closure Plan Checklist:** (19.15.17.13 NMAC) **Instructions:** Each of the following items must be attached to the closure plan. Please indicate, by a check mark in the box, that the documents are attached.

- ☐ Protocols and Procedures - based upon the appropriate requirements of 19.15.17.13 NMAC
- ☐ Confirmation Sampling Plan (if applicable) - based upon the appropriate requirements of Subsection F of 19.15.17.13 NMAC
- ☐ Disposal Facility Name and Permit Number (for liquids, drilling fluids and drill cuttings)
- ☐ Soil Backfill and Cover Design Specifications - based upon the appropriate requirements of Subsection H of 19.15.17.13 NMAC
- ☐ Re-vegetation Plan - based upon the appropriate requirements of Subsection I of 19.15.17.13 NMAC
- ☐ Site Reclamation Plan - based upon the appropriate requirements of Subsection G of 19.15.17.13 NMAC

16

**Waste Removal Closure For Closed-loop Systems That Utilize Above Ground Steel Tanks or Haul-off Bins Only:** (19.15.17.13 D NMAC)

**Instructions:** Please identify the facility or facilities for the disposal of liquids, drilling fluids and drill cuttings. Use attachment if more than two facilities are required.

Disposal Facility Name: \_\_\_\_\_ Disposal Facility Permit Number: \_\_\_\_\_

Disposal Facility Name: \_\_\_\_\_ Disposal Facility Permit Number: \_\_\_\_\_

Will any of the proposed closed-loop system operations and associated activities occur on or in areas that *will not* be used for future service and operations?

☐ Yes (If yes, please provide the information below) ☐ No

*Required for impacted areas which will not be used for future service and operations*

☐ Soil Backfill and Cover Design Specifications - based upon the appropriate requirements of Subsection H of 19.15.17.13 NMAC

☐ Re-vegetation Plan - based upon the appropriate requirements of Subsection I of 19.15.17.13 NMAC

☐ Site Reclamation Plan - based upon the appropriate requirements of Subsection G of 19.15.17.13 NMAC

17.

**Siting Criteria (regarding on-site closure methods only):** 19.15.17.10 NMAC

**Instructions:** Each siting criteria requires a demonstration of compliance in the closure plan. Recommendations of acceptable source material are provided below. Requests regarding changes to certain siting criteria may require administrative approval from the appropriate district office or may be considered an exception which must be submitted to the Santa Fe Environmental Bureau office for consideration of approval. Justifications and/or demonstrations of equivalency are required. Please refer to 19.15.17.10 NMAC for guidance.

Ground water is less than 50 feet below the bottom of the buried waste.

- NM Office of the State Engineer - iWATERS database search, USGS, Data obtained from nearby wells

☐ Yes ☒ No

☐ NA

Ground water is between 50 and 100 feet below the bottom of the buried waste

- NM Office of the State Engineer - iWATERS database search; USGS; Data obtained from nearby wells

☒ Yes ☐ No

☐ NA

Ground water is more than 100 feet below the bottom of the buried waste.

- NM Office of the State Engineer - iWATERS database search, USGS, Data obtained from nearby wells

☐ Yes ☒ No

☐ NA

Within 300 feet of a continuously flowing watercourse, or 200 feet of any other significant watercourse or lakebed, sinkhole, or playa lake (measured from the ordinary high-water mark).

- Topographic map; Visual inspection (certification) of the proposed site

☐ Yes ☒ No

Within 300 feet from a permanent residence, school, hospital, institution, or church in existence at the time of initial application.

- Visual inspection (certification) of the proposed site, Aerial photo; Satellite image

☐ Yes ☒ No

Within 500 horizontal feet of a private, domestic fresh water well or spring that less than five households use for domestic or stock watering purposes, or within 1000 horizontal feet of any other fresh water well or spring, in existence at the time of initial application

- NM Office of the State Engineer - iWATERS database; Visual inspection (certification) of the proposed site

☐ Yes ☒ No

Within incorporated municipal boundaries or within a defined municipal fresh water well field covered under a municipal ordinance adopted pursuant to NMSA 1978, Section 3-27-3, as amended.

- Written confirmation or verification from the municipality; Written approval obtained from the municipality

☐ Yes ☒ No

Within 500 feet of a wetland.

- US Fish and Wildlife Wetland Identification map, Topographic map, Visual inspection (certification) of the proposed site

☐ Yes ☒ No

Within the area overlying a subsurface mine.

- Written confirmation or verification or map from the NM EMNRD-Mining and Mineral Division

☐ Yes ☒ No

Within an unstable area.

- Engineering measures incorporated into the design; NM Bureau of Geology & Mineral Resources, USGS; NM Geological Society; Topographic map

☐ Yes ☒ No

Within a 100-year floodplain.

- FEMA map

☐ Yes ☒ No

18.

**On-Site Closure Plan Checklist:** (19.15.17.13 NMAC) **Instructions:** Each of the following items must be attached to the closure plan. Please indicate, by a check mark in the box, that the documents are attached.

☒ Siting Criteria Compliance Demonstrations - based upon the appropriate requirements of 19.15.17.10 NMAC

☒ Proof of Surface Owner Notice - based upon the appropriate requirements of Subsection F of 19.15.17.13 NMAC

☐ Construction/Design Plan of Burial Trench (if applicable) based upon the appropriate requirements of 19.15.17.11 NMAC

☒ Construction/Design Plan of Temporary Pit (for in-place burial of a drying pad) - based upon the appropriate requirements of 19.15.17.11 NMAC

☒ Protocols and Procedures - based upon the appropriate requirements of 19.15.17.13 NMAC

☒ Confirmation Sampling Plan (if applicable) - based upon the appropriate requirements of Subsection F of 19.15.17.13 NMAC

☒ Waste Material Sampling Plan - based upon the appropriate requirements of Subsection F of 19.15.17.13 NMAC

☒ Disposal Facility Name and Permit Number (for liquids, drilling fluids and drill cuttings or in case on-site closure standards cannot be achieved)

☒ Soil Cover Design - based upon the appropriate requirements of Subsection H of 19.15.17.13 NMAC

☒ Re-vegetation Plan - based upon the appropriate requirements of Subsection I of 19.15.17.13 NMAC

☒ Site Reclamation Plan - based upon the appropriate requirements of Subsection G of 19.15.17.13 NMAC

19

**Operator Application Certification:**

I hereby certify that the information submitted with this application is true, accurate and complete to the best of my knowledge and belief.

Name (Print) Tasha Meador Title: EH & S Specialist

Signature: \_\_\_\_\_ Date: \_\_\_\_\_

e-mail address tasha/meador@williams.com Telephone 505-634-4241

20.

**OCD Approval:** ☐ Permit Application (including closure plan) ☒ Closure Plan (only) ☐ OCD Conditions (see attachment)

OCD Representative Signature: Jonathan D. Kelly Approval Date: 9/6/2001

Title: Compliance Officer OCD Permit Number: \_\_\_\_\_

21  
**Closure Report (required within 60 days of closure completion):** Subsection K of 19.15.17.13 NMAC

*Instructions: Operators are required to obtain an approved closure plan prior to implementing any closure activities and submitting the closure report. The closure report is required to be submitted to the division within 60 days of the completion of the closure activities. Please do not complete this section of the form until an approved closure plan has been obtained and the closure activities have been completed.*

☒ Closure Completion Date: 6/29/10

22

**Closure Method:**

☐ Waste Excavation and Removal ☒ On-Site Closure Method ☐ Alternative Closure Method ☐ Waste Removal (Closed-loop systems only)  
☐ If different from approved plan, please explain.

23

**Closure Report Regarding Waste Removal Closure For Closed-loop Systems That Utilize Above Ground Steel Tanks or Haul-off Bins Only:**

*Instructions: Please identify the facility or facilities for where the liquids, drilling fluids and drill cuttings were disposed. Use attachment if more than two facilities were utilized.*

Disposal Facility Name: \_\_\_\_\_ Disposal Facility Permit Number: \_\_\_\_\_

Disposal Facility Name: \_\_\_\_\_ Disposal Facility Permit Number: \_\_\_\_\_

Were the closed-loop system operations and associated activities performed on or in areas that *will not* be used for future service and operations?

☐ Yes (If yes, please demonstrate compliance to the items below) ☐ No

*Required for impacted areas which will not be used for future service and operations*

- ☐ Site Reclamation (Photo Documentation)  
☐ Soil Backfilling and Cover Installation  
☐ Re-vegetation Application Rates and Seeding Technique

24

**Closure Report Attachment Checklist:** *Instructions: Each of the following items must be attached to the closure report. Please indicate, by a check mark in the box, that the documents are attached.*

- ☒ Proof of Closure Notice (surface owner and division)  
☒ Proof of Deed Notice (required for on-site closure)  
☒ Plot Plan (for on-site closures and temporary pits)  
☒ Confirmation Sampling Analytical Results (if applicable)  
☒ Waste Material Sampling Analytical Results (required for on-site closure)  
☒ Disposal Facility Name and Permit Number  
☒ Soil Backfilling and Cover Installation  
☒ Re-vegetation Application Rates and Seeding Technique  
☒ Site Reclamation (Photo Documentation)

On-site Closure Location: Latitude 36 8715N Longitude -107.40256W NAD: ☐ 1927 ☒ 1983

25.

**Operator Closure Certification:**

I hereby certify that the information and attachments submitted with this closure report is true, accurate and complete to the best of my knowledge and belief. I also certify that the closure complies with all applicable closure requirements and conditions specified in the approved closure plan

Name (Print): Tasha Meador Title: EH&S Specialist

Signature: Tasha Meador Date: 8/10/10

e-mail address: tasha.meador@williams.com Telephone: 505-634-4241

**Williams Production Co., LLC**  
**San Juan Basin: New Mexico Assets**  
Temporary Pit In-place Closure Report  
Drilling/Completion and Workover  
(Groundwater >100 feet bgs)

**Well:** Rosa Unit # 166B  
**API No:** 3003929841  
**Location:** G-S30-T31N-R05W,NMPM

In accordance with Rule 19.15.17.13 NMAC, the following plan describes the general in-place closure requirements of temporary pits on Williams Production Co, LLC (WPX) locations in the San Juan Basin of New Mexico. This is WPX's standard procedure for all temporary pits to be utilized for the drilling, completion and/or workovers of oil and gas wells operated by WPX. For those temporary pits which do not conform to this standard closure plan, a separate well/pit specific closure plan will be developed and utilized.

All closure activities will include proper documentation and will be submitted to OCD within 60 days of the pit closure on a Closure Report using Division Form C-144. The Report will include the following:

- Details on Capping and Covering, where applicable
- Plot Plan (Pit Diagram)
- Inspection reports
- Sampling Results
- Division Form C-105: *WELL COMPLETION OR Recompletion REPORT AND LOG*
- Copy of Deed Notice filed with the County Clerk (format to meet County requirements)  
A deed notice is not required on state, federal or tribal land according to NMOCD FAQ dated October 30, 2008 and posted on the NMOCD website.

**General Plan Requirements:**

1. All free standing liquids will be removed from the pit at the start of the closure process. Liquids will be removed in a manner that the appropriate District Office approves including; recycled, reused, reclaimed, evaporated, and/or disposed of in a Division-approved facility. Once all free liquids are removed, the sludge will be stabilized by one of the following methods depending on equipment availability: blending with clean stockpiled soils or dewatering using a Bowl Decanter Centrifuge then blending with clean stockpiles soils.  
To the extent practical, free liquids were pulled from the reserve pit following the completion rig off. Haul date was 6/4/2010 to (Rosa Unit SWD #1 (Order #SWD-916, API:30-039-27055)).
2. The preferred method of closure for all temporary pits will be on-site closure by in-place burial, provided all the criteria in 19.15.17.13.B are met  
On-site burial plan for this location was approved by the Aztec District Office on 10/23/08
3. The surface owner shall be notified of WPX's proposed closure plan using a means that provides proof of notice (i.e. certified mail/return receipt requested)  
Williams notified the SMA of its intent to use a temporary pit and onsite burial in the Surface Use Plan in the well APD. The SMA was notified by email see attached. No return receipt required per BLM:FFO/NMOCD MOU dated 5/4/09.
4. Within six months of the "rig-off" status occurring WPX will ensure that the temporary pit is covered, recontoured and reseeded in progress  
Drill rig-off 6/10/08 Request for transfer to completion rig submitted 7/30/09 to OCD Aztec District Office, Completion rig-off 5/24/10 Pit covered (6/29/2010) Pit area along with unused portions of well pad to be interim reclaimed in accordance with Surface Management Agency requirements in APD-COAs and per BLM:FFO/NMOCD MOU dated 5/4/09.
5. Notice of Closure will be given to the Aztec District office between 72 hours and one week of the scheduled closure via email or phone. The notification of closure will include the following:
  - a. Operators Name (WPX)
  - b. Well Name and API Number
  - c. Location (USTR)

The Aztec District Office of NMOCD was notified by email using a format acceptable to the District. Copies of the notification from Abode Contractors on 9/21/2009 is attached.

6. The pit liner shall be removed above "mud level" after stabilization. Removal of the liner will consist of manually or mechanically cutting the liner at the mud level and removing all remaining liner. Care will be taken to remove "all" of the liner (i.e. anchored material). All excessive liner will be disposed of at a licensed disposal facility (probably San Juan Regional Landfill operated by Waste Management under NMED Permit SWM-052426).

The liner to the temporary pit was removed above the "mud level" once stabilized. Removal of the liner consisted of manually cutting the liner and removing all remaining liner material above the "mud level" including the anchor material. All excessive liner was disposed of at the San Juan Regional Landfill operated by Waste Management under NMED Permit SWM-052426.

7. Solidification of the remaining pit contents shall be achieved by mixing non-waste containing, earthen material. The solidification process will be accomplished use a combination of natural drying and mechanical mixing. Pit contents will be mixed with non-waste, earthen material to a consistency that is deemed safe and stable. The mixing ratio shall not exceed 3 parts non-waste to 1 part pit contents.

Following removal of free liquids, the pit contents were mixed with non-waste containing, earthen material in order to achieve appropriate solidification and a consistency that was deemed safe and stable. The solidification process was accomplished using a combination of natural drying, a Bowl Decanter Centrifuge, and mechanically mixing using a dozer and track hoe. The mixing ration was approximately 2.5-3 parts native soil to 1 part pit contents. Solidification was completed (6/25/2010).

8. A five-point composite sample will be taken of the pit using sampling tools and all samples tested per 19.15.17.13(B)(1)(b) NMAC. In the event that the criteria are not met (See Table 1), all contents will be handled per 19.15.17.13(B)(1)(a) (i.e. dig and haul to a Division-approved facility). Approval to haul will be requested of the Aztec District office prior to initiation.

A five-point composite sampling was taken of the pit area using sampling tools and the sample was tested per 19.15.17.13(B)(1)(b) NMAC. Results are shown in Table 1 and lab reports are attached.

Table 1: Closure Criteria for Temporary Pits in Non-sensitive Areas with Groundwater >100 bgs.

Components	Testing Methods	Limits (mg/Kg)	Pit (mg/Kg)
Benzene	EPA SW-846 Method 8021B or 8260B	0.2	.0012
BTEX	EPA SW-846 Method 8021B or 8260B	50	.0012
TPH	EPA SW-846 Method 418.1	2500	31.8
GRO/DRO	EPA SW-846 Method 8015M (GRO/DRO)	500	0.4
Chlorides	EPA SW-846 Method 300.1	500	20

9. Upon completion of solidification and testing, the pit area will be backfilled with non-waste earthen material compacted to native conditions to enable effective revegetation for successful evapotranspiration. A minimum of four feet of cover including replacement of one foot of suitable material to establish vegetation, or the background thickness of topsoil, whichever is greater.

Upon completion of solidification and testing, the pit area was backfilled with non-waste earthen material compacted to native conditions. A minimum of four feet of cover to the extent practical was achieved and the cover included just over a foot of topsoil suitable to establish vegetation.

10. Following cover, the site will be recontoured to meet the Surface Management Agency or surface owner requirements. Re-contouring will attempt to match fit, shape, line form, and texture of the surrounding geography. Re-shaping will include drainage control, prevent ponding, and minimize erosion. Natural drainages will be unimpeded and stormwater Best Management Practices (BMPs) will be used to aid in soil stabilization and protection surface water quality.

Following cover, Williams reestablished drainage and contours to approximately match previous topography meeting the Conditions of Approval in the APD and the direction offered by a BLM/USFS inspector. Cover and re-contouring were completed (6/29/2010.)

11. Notification will be sent to the Aztec District office when the reclaimed area is seeded. Williams will comply with Surface Management Agency reseeding requirements in the COAs of the APD for the referenced well, per BLM:FFO/NMOCD MOU dated 5/4/09.

12. WPX shall seed the disturbed areas the first growing season after the pit is covered. Seeding will be accomplished via drilling on the contour whenever practical, or by other Division-

approved methods. Vegetative cover will equal 70% of the native perennial vegetative cover (un-impacted) consisting of at least three native plant species, including at least one grass, but not including noxious weeds, and maintained that cover through two successive growing seasons. Repeat seeding or planting will be continued until successful vegetative growth occurs. *Note: WPX assumes the seeding stipulations including mix and seeding methods specified by the Surface Management Agency (BLM, BOR, USFS, Tribal, etc.) or Land owner as part of a surface use agreement or APD are Division-approved methods unless notified by the Division of their unacceptability.*

Williams will comply with Surface Management Agency reseeding requirements in the COAs of the APD for the referenced well, per BLM:FFO/NMOCD MOU dated 5/4/09.

13. The temporary pit will be located with a steel marker, no less than four inches in diameter, cemented in a hole three feet deep in the center of the onsite burial upon the abandonment of all wells on the pad. The marker will be flush with the ground to allow access of the active well pad and for safety concerns. The marker will include a threaded collar to be used for future abandonment. The top of the marker will contain a welded steel 12" square plate that indicates the on site burial of the temporary pit. The plate will be easily removable and a four-foot tall riser will be threaded into the top of the collar marker and welded around the base with the operations information at the time of all wells on the pad abandoned. The information will include Operator Name, Lease Name, Well Name, and number, USTR, and an indicator that the marker is an onsite pit burial location.

The temporary pit was located with a steel marker meeting the above listed specifications. The marker has the following information welded for future reference. Williams Production, NMSF-078768, S30-T31N-R05W-G, "Pit Burial" (photo attached). Steel marker set 7/31/2010.



**Meador, Tasha**

---

**From:** johnny@adobecontractorsinc.com  
**Sent:** Monday, September 21, 2009 10:15 AM  
**To:** Bill Liess; Mark Kelly; Randy Mckee; Robert Switzer; Sherrie Landon  
**Cc:** Meador, Tasha ; Lane, Myke  
**Subject:** Williams clean-ups

We will move to the Rosa Unit #166B and the 187C after we finish the 12D and 85C. It should be by the end of this week. Let me know if you have any questions.

Thanks,

Johnny Stinson  
Gen. Manager/ Adobe Contractors  
Office: (505)632-1486  
Mobile: (505)320-6076  
[johnny@adobecontractorsinc.com](mailto:johnny@adobecontractorsinc.com)

9/25/2009

**Meador, Tasha**

---

**From:** Glenn Shelby [glenn@adobecontractorsinc.com]  
**Sent:** Friday, June 25, 2010 10:38 AM  
**To:** Sherrie Landon; Randy Mckee; Bob Switzer; Bill Liess; Mark Kelly  
**Cc:** Johnny Stinson; Meador, Tasha; Lane, Myke  
**Subject:** Williams cleanups, Rosa Unit 166B

On June 28th we will be moving equipment and starting the cleanup on the Rosa Unit 166B. If you have any questions call me.

Thanks,  
Glenn Shelby  
Field Foreman  
Adobe Contractors, Inc.  
Cell: 320-7187  
[glenn@adobecontractorsinc.com](mailto:glenn@adobecontractorsinc.com)

7/19/2010

## Fields, Vanessa

---

**From:** johnny@adobecontractorsinc.com  
**Sent:** Tuesday, August 03, 2010 1:42 PM  
**To:** Fields, Vanessa  
**Subject:** RE: Rosa Unit # 166B

Vanessa,  
We closed that pit on 6/29/10. Let me know if you have any more questions. I look forward to meeting you.

Thanks,

Johnny Stinson  
Gen. Manager/ Adobe Contractors  
Office: (505)632-1486  
Mobile: (505)320-6076  
[johnny@adobecontractorsinc.com](mailto:johnny@adobecontractorsinc.com)

---

**From:** Fields, Vanessa [mailto:Vanessa.Fields@williams.com]  
**Sent:** Tuesday, August 03, 2010 10:42 AM  
**To:** johnny@adobecontractorsinc.com  
**Cc:** Meador, Tasha  
**Subject:** Rosa Unit # 166B

Johnny,

Could you please tell me when the Rosa Unit #166B was covered? Should you have any questions please feel free to give me a call.

Thank You,

***Vanessa Fields***

EH&S Coordinator  
Williams Exploration and Production  
721 S. Main Aztec, NM 87410  
office: 505-634-4200  
fax: 505-634-4205  
[vanessa.fields@williams.com](mailto:vanessa.fields@williams.com)



**EPA METHOD 8015 Modified  
Nonhalogenated Volatile Organics  
Total Petroleum Hydrocarbons**

Client: WPX  
Sample ID: Reserve Pit  
Laboratory Number: 55299  
Chain of Custody No: 10037  
Sample Matrix: Soil  
Preservative: Cool  
Condition: Intact

Project #: 04108-0136  
Date Reported: 07-28-10  
Date Sampled: 07-22-10  
Date Received: 07-26-10  
Date Extracted: 07-26-10  
Date Analyzed: 07-27-10  
Analysis Requested: 8015 TPH

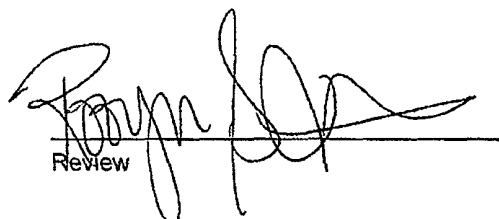
Parameter	Concentration (mg/Kg)	Det. Limit (mg/Kg)
Gasoline Range (C5 - C10)	0.4	0.2
Diesel Range (C10 - C28)	ND	0.1
Total Petroleum Hydrocarbons	0.4	0.2

ND - Parameter not detected at the stated detection limit.

References: Method 8015B, Nonhalogenated Volatile Organics, Test Methods for Evaluating Solid Waste, SW-846, USEPA, December 1996.

Comments: Rosa Unit #166B

  
\_\_\_\_\_  
Analyst

  
\_\_\_\_\_  
Review



EPA Method 8015 Modified  
Nonhalogenated Volatile Organics  
Total Petroleum Hydrocarbons

Quality Assurance Report

Client:	QA/QC	Project #:	N/A
Sample ID:	07-27-10 QA/QC	Date Reported:	07-28-10
Laboratory Number:	55295	Date Sampled:	N/A
Sample Matrix:	Methylene Chloride	Date Received:	N/A
Preservative:	N/A	Date Analyzed:	07-27-10
Condition:	N/A	Analysis Requested:	TPH

	I-Cal Date	I-Cal RF:	C-Cal RF:	% Difference	Accept. Range
Gasoline Range C5 - C10	05-07-07	9.9960E+002	1.0000E+003	0.04%	0 - 15%
Diesel Range C10 - C28	05-07-07	9.9984E+002	1.0002E+003	0.04%	0 - 15%

Blank Conc. (mg/L - mg/Kg)	Concentration	Detection Limit
Gasoline Range C5 - C10	ND	0.2
Diesel Range C10 - C28	ND	0.1
Total Petroleum Hydrocarbons	ND	0.2

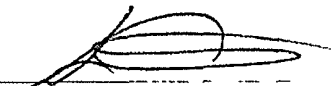
Duplicate Conc. (mg/Kg)	Sample	Duplicate	% Difference	Accept. Range
Gasoline Range C5 - C10	0.3	0.3	0.0%	0 - 30%
Diesel Range C10 - C28	ND	ND	0.0%	0 - 30%

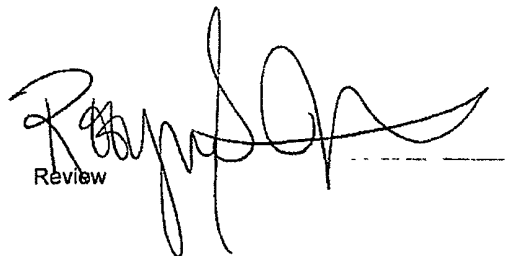
Spike Conc. (mg/Kg)	Sample	Spike Added	Spike Result	% Recovery	Accept. Range
Gasoline Range C5 - C10	0.3	250	252	101%	75 - 125%
Diesel Range C10 - C28	ND	250	253	101%	75 - 125%

ND - Parameter not detected at the stated detection limit.

References: Method 8015B, Nonhalogenated Volatile Organics, Test Methods for Evaluating Solid Waste, SW-846, USEPA, December 1996.

Comments: QA/QC for Samples 55295-55299

  
Analyst

  
Review



EPA METHOD 8021  
AROMATIC VOLATILE ORGANICS

Client: WPX  
Sample ID: Reserve Pit  
Laboratory Number: 55299  
Chain of Custody: 10037  
Sample Matrix: Soil  
Preservative: Cool  
Condition: Intact

Project #: 04108-0136  
Date Reported: 07-28-10  
Date Sampled: 07-22-10  
Date Received: 07-26-10  
Date Analyzed: 07-27-10  
Date Extracted: 07-26-10  
Analysis Requested: BTEX

Parameter	Concentration (ug/Kg)	Det. Limit (ug/Kg)
Benzene	1.2	0.9
Toluene	ND	1.0
Ethylbenzene	ND	1.0
p,m-Xylene	ND	1.2
o-Xylene	ND	0.9
Total BTEX	1.2	

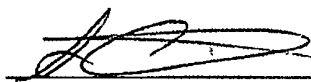
ND - Parameter not detected at the stated detection limit.

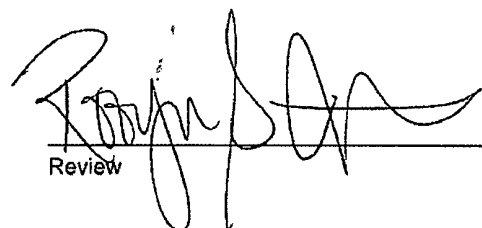
Surrogate Recoveries:	Parameter	Percent Recovery
	Fluorobenzene	98 %
	1,4-difluorobenzene	100 %
	Bromochlorobenzene	103 %

References: Method 5030B, Purge-and-Trap, Test Methods for Evaluating Solid Waste, SW-846, USEPA, December 1996

Method 8021B, Aromatic Volatile Organics, Test Methods for Evaluating Solid Waste, SW-846, USEPA, December 1996.

Comments: Rosa Unit #166B

  
\_\_\_\_\_  
Analyst

  
\_\_\_\_\_  
Review



EPA METHOD 8021  
AROMATIC VOLATILE ORGANICS

Client: N/A  
Sample ID: 0727BBLK QA/QC  
Laboratory Number: 55295  
Sample Matrix: Soil  
Preservative: N/A  
Condition: N/A

Project #: N/A  
Date Reported: 07-28-10  
Date Sampled: N/A  
Date Received: N/A  
Date Analyzed: 07-27-10  
Analysis: BTEX

Calibration and Detection Limits (ug/L)	I-Cal RF:	C-Cal RF:	%Diff. Accept. Range 0 - 15%	Blank Conc	Detect. Limit
Benzene	8.2402E+005	8.2567E+005	0.2%	ND	0.1
Toluene	9.0381E+005	9.0563E+005	0.2%	ND	0.1
Ethylbenzene	8.1829E+005	8.1993E+005	0.2%	ND	0.1
p,m-Xylene	2.0409E+006	2.0450E+006	0.2%	ND	0.1
o-Xylene	7.1668E+005	7.1812E+005	0.2%	ND	0.1

Duplicate Conc. (ug/Kg)	Sample	Duplicate	%Diff.	Accept Range	Detect. Limit
Benzene	ND	ND	0.0%	0 - 30%	0.9
Toluene	ND	ND	0.0%	0 - 30%	1.0
Ethylbenzene	ND	ND	0.0%	0 - 30%	1.0
p,m-Xylene	ND	ND	0.0%	0 - 30%	1.2
o-Xylene	ND	ND	0.0%	0 - 30%	0.9

Spike Conc. (ug/Kg)	Sample	Amount Spiked	Spiked Sample	% Recovery	Accept Range
Benzene	ND	50.0	50.2	100%	39 - 150
Toluene	ND	50.0	50.6	101%	46 - 148
Ethylbenzene	ND	50.0	50.6	101%	32 - 160
p,m-Xylene	ND	100	101	101%	46 - 148
o-Xylene	ND	50.0	51.4	103%	46 - 148

ND - Parameter not detected at the stated detection limit

References: Method 5030B, Purge-and-Trap, Test Methods for Evaluating Solid Waste, SW-846, USEPA, December 1996.  
Method 8021B, Aromatic and Halogenated Volatiles by Gas Chromatography Using Photoionization and/or Electrolytic Conductivity Detectors, SW-846, USEPA December 1996.

Comments: QA/QC for Samples 55295-55299

Analyst

Review



**envirotech**  
Analytical Laboratory

**EPA METHOD 418.1  
TOTAL PETROLEUM  
HYDROCARBONS**

Client:	WPX	Project #:	04108-0136
Sample ID:	Reserve Pit	Date Reported:	07-27-10
Laboratory Number:	55299	Date Sampled:	07-22-10
Chain of Custody No:	10037	Date Received:	07-26-10
Sample Matrix:	Soil	Date Extracted:	07-27-10
Preservative:	Cool	Date Analyzed:	07-27-10
Condition:	Intact	Analysis Needed:	TPH-418.1

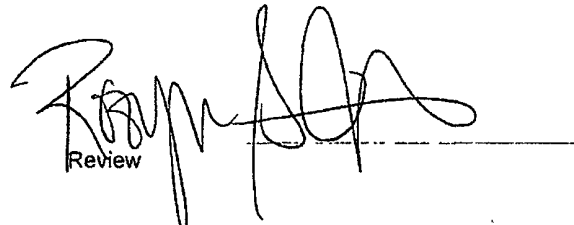
Parameter	Concentration (mg/kg)	Det. Limit (mg/kg)
Total Petroleum Hydrocarbons	31.8	5.0

ND = Parameter not detected at the stated detection limit.

References: Method 418.1, Petroleum Hydrocarbons, Total Recoverable, Chemical Analysis of Water and Waste, USEPA Storet No. 4551, 1978.

Comments: Rosa Unit #166B

  
Analyst

  
Review





**envirotech**  
Analytical Laboratory

**EPA METHOD 418.1  
TOTAL PETROLEUM  
HYDROCARBONS  
QUALITY ASSURANCE REPORT**

Client:	QA/QC	Project #:	N/A
Sample ID:	QA/QC	Date Reported:	07-27-10
Laboratory Number:	07-27-TPH.QA/QC 55295	Date Sampled:	N/A
Sample Matrix:	Freon-113	Date Analyzed:	07-27-10
Preservative:	N/A	Date Extracted:	07-27-10
Condition:	N/A	Analysis Needed:	TPH

Calibration	I-Cal Date	C-Cal Date	I-Cal RF:	C-Cal RF:	% Difference	Accept. Range
	07-15-10	07-27-10	1,846	1,770	4.1%	+/- 10%

**Blank Conc. (mg/Kg)**  
TPH

Concentration  
ND

Detection Limit  
5.0

**Duplicate Conc. (mg/Kg)**  
TPH

Sample  
16.3

Duplicate  
13.3

% Difference  
18.4%

Accept. Range  
+/- 30%

**Spike Conc. (mg/Kg)**  
TPH

Sample  
16.3

Spike Added  
2,000

Spike Result  
1,850

% Recovery  
91.8%

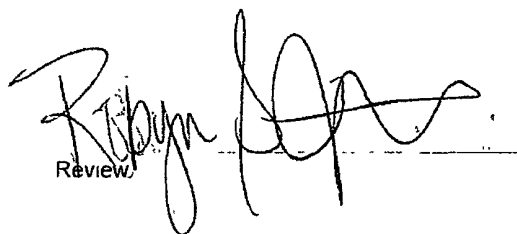
Accept Range  
80 - 120%

ND = Parameter not detected at the stated detection limit.

References: Method 418.1, Petroleum Hydrocarbons, Total Recoverable, Chemical Analysis of Water and Waste, USEPA Storet No. 4551, 1978.

Comments: QA/QC for Samples 55295-55299

  
Analyst

  
Review



## Chloride

Client: WPX  
Sample ID: Reserve pit  
Lab ID#: 55299  
Sample Matrix: Soil  
Preservative: Cool  
Condition: Intact

Project #: 04108-0136  
Date Reported: 07-27-10  
Date Sampled: 07-22-10  
Date Received: 07-26-10  
Date Analyzed: 07-27-10  
Chain of Custody: 10037

Parameter

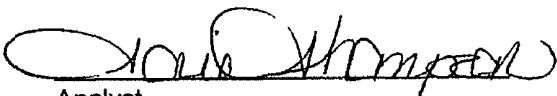
Concentration (mg/Kg)

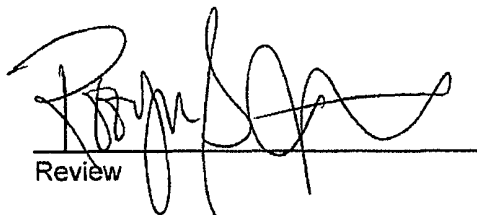
Total Chloride

20

Reference: U.S.E.P.A., 4500B, "Methods for Chemical Analysis of Water and Wastes", 1983.  
Standard Methods For The Examination of Water And Waste Water", 18th ed., 1992.

Comments: Rosa Unit #166B

  
Analyst

  
Review

# CHAIN OF CUSTODY RECORD

10037

Client: WPX			Project Name / Location: Rosa unit # 166B			ANALYSIS / PARAMETERS													
Client Address: myke Lane			Sampler Name: Glen Shelby			<div style="display: flex; justify-content: space-between;"> <div> <div>TPH (Method 8015)</div> <div>BTEX (Method 8021)</div> <div>VOC (Method 8260)</div> <div>RCRA 8 Metals</div> <div>Cation / Anion</div> <div>RCI</div> <div>TCLP with H/P</div> <div>PAH</div> <div>TPH (418.1)</div> <div>CHLORIDE</div> </div> <div> <div>Sample Cool</div> <div>Sample Intact</div> </div> </div>													
Client Phone No.:			Client No.: 04108-01310																
Sample No./ Identification	Sample Date	Sample Time	Lab No.	Sample Matrix	No./Volume of Containers	Preservative HgCl <sub>2</sub> HCl		TPH (Method 8015)	BTEX (Method 8021)	VOC (Method 8260)	RCRA 8 Metals	Cation / Anion	RCI	TCLP with H/P	PAH	TPH (418.1)	CHLORIDE	Sample Cool	Sample Intact
Reserve Pit	7-22-10	12:15 PM	55209	Soil Solid	1			✓	✓							✓	✓	Y	Y
				Soil Solid															
				Soil Solid															
				Soil Solid															
				Soil Solid															
				Soil Solid															
				Soil Solid															
				Soil Solid															
				Soil Solid															
				Soil Solid															
				Soil Solid															
				Soil Solid															
				Soil Solid															
Relinquished by: (Signature)				Date	Time	Received by: (Signature)				Date	Time								
				7-26-10	10:45 PM					7/26/10	10:15								
Relinquished by: (Signature)						Received by: (Signature)													
Relinquished by: (Signature)						Received by: (Signature)													



5796 US Highway 64 • Farmington, NM 87401 • 505-632-0615 • lab@envirotech-inc.com

UNITED STATES  
DEPARTMENT OF THE INTERIOR  
BUREAU OF LAND MANAGEMENT

SUBMIT IN  
DUPLICATE

(See other instructions on  
reverse side)

FORM APPROVED  
OMB NO 1004-0137  
Expires February 28, 1995

<b>WELL COMPLETION OR RECOMPLETION REPORT AND LOG*</b>						5 LEASE DESIGNATION AND LEASE NO NMSF-078764	
1a TYPE OF WELL OIL WELL <input checked="" type="checkbox"/> GAS WELL DRY OTHER b TYPE OF COMPLETION <input checked="" type="checkbox"/> NEW WELL WORKOVER DEEPEN PLUG BACK DIFF RESVR OTHER						6 IF INDIAN, ALLOTTEE OR	
						7 UNIT AGREEMENT NAME Rosa Unit	
2 NAME OF OPERATOR WILLIAMS PRODUCTION COMPANY						8 FARM OR LEASE NAME, WELL NO Rosa Unit #166B	
3 ADDRESS AND TELEPHONE NO P O Box 640, Aztec, NM 87410 (505) 634-4208						9 API WELL NO 30-039-29841	
4 LOCATION OF WELL (Report location clearly and in accordance with any State requirements)* At Surface 2305' FNL & 2305' FEL, sec 30, T31N, R5W At top production interval reported below At total depth						10 FIELD AND POOL, OR WILDCAT BASIN DAKOTA	
						11 SEC, T, R, M, OR BLOCK AND SURVEY OR AREA SW/4 NE/4, Sec 30, T31N, R5W	
				14 PERMIT NO	DATE ISSUED	12 COUNTY OR Rio Arriba	13 STATE New Mexico
15 DATE SPUDDED 4-13-08	16 DATE T D REACHED 6-6-08	17 DATE COMPLETED (READY TO PRODUCE) 6-30-08		18 ELEVATIONS (DK, RKB, RT, GR, ETC)* 6385' GR		19 ELEVATION CASINGHEAD	
20 TOTAL DEPTH, MD & TVD 8243' MD		21 PLUG, BACK T D, MD & TVD 8196'		22 IF MULTICOMP, HOW MANY 3 *	23 INTERVALS DRILLED BY	ROTARY TOOLS x	CABLE TOOLS
24 PRODUCING INTERVAL(S), OF THIS COMPLETION - TOP, BOTTOM, NAME (MD AND TVD)* BASIN DAKOTA 7898' - 8052' * Mesaverde & Mancos to be completed at later date						25 WAS DIRECTIONAL SURVEY MADE YES	
26 TYPE ELECTRIC AND OTHER LOGS RUN						27 WAS WELL CORED Yes	
28 CASING REPORT (Report all strings set in well)							
CASING SIZE/GRADE		WEIGHT, LB/FT	DEPTH SET (MD)	HOLE SIZE	TOP OF CEMENT, CEMENTING RECORD		AMOUNT PULLED
20", K-55		94#	426'	26"	739 SX - SURFACE		
13-3/8", L-80		68#	3703'	17-1/2"	2000 SX - SURFACE		
5-1/2", N-80		170#	8243'	7-7/8"	850 SX - 3200' (CBL)		
29 LINER RECORD							
SIZE	TOP (MD)	BOTTOM (MD)	SACKS CEMENT*	SCREEN (MD)	SIZE	DEPTH SET (MD)	PACKER SET (MD)
9-5/8", P-110, 47#	3480'	5969'	540 sx TOC - 3480' (CBL)		2 875", 6 5#, J-55, EUE 8rd	8051'	none
31 PERFORATION RECORD (Interval, size, and number) <u>Dakota</u> 7898' - 8052' Total of 81, 0.37" holes				32 ACID, SHOT, FRACTURE, CEMENT SQUEEZE, ETC			
				DEPTH INTERVAL (MD)	AMOUNT AND KIND OF MATERIAL USED		
				7898' - 8052'	Fraced with 10,727# LiteProp 108 14/40 followed w/3470# tempered LC 20/40		
33 PRODUCTION							
DATE OF FIRST PRODUCTION		PRODUCTION METHOD (Flowing, gas lift, pumping-size and type of pump) Flowing				WELL STATUS (PRODUCING OR SI) SI - waiting on tie-in	
DATE OF TEST 6-25-08	TESTED 10 hr	CHOKE SIZE 2"	PROD'N FOR TEST PERIOD	OIL - BBL	GAS - MCF	WATER - BBL	GAS-OIL RATIO
FLOW TBG PRESS 0	CASING PRESSURE 20 oz	CALCULATED 24-HOUR RATE		OIL - BBL	GAS - MCF 217 p/day	WATER - BBL	OIL GRAVITY-API (CORR)
34 DISPOSITION OF GAS (Sold, used for fuel, vented, etc) TO BE SOLD						TEST WITNESSED BY Al Rector	
35 LIST OF ATTACHMENTS SUMMARY OF POROUS ZONES, WELLBORE DIAGRAM							
36 I hereby certify that the foregoing and attached information is complete and correct as determined from all available records							

SIGNED \_\_\_\_\_ TITLE Drig COM DATE 6-30-08

In Lieu of  
Form 3160-4  
(July 1992)

UNITED STATES  
DEPARTMENT OF THE INTERIOR  
BUREAU OF LAND MANAGEMENT

SUBMIT IN  
DUPLICATE

(See other instructions on  
reverse side)

FORM APPROVED  
OMB NO 1004-0137  
Expires February 28, 1995

5 LEASE DESIGNATION AND LEASE NO  
NMSF-078764

6 IF INDIAN,ALLOTTEE OR

7 UNIT AGREEMENT NAME  
Rosa Unit

8 FARM OR LEASE NAME, WELL NO  
Rosa Unit #166B

9 API WELL NO  
30-039-29841

10 FIELD AND POOL, OR WILDCAT  
BASIN MANCOS

11 SEC , T , R , M , OR BLOCK AND  
SURVEY OR AREA  
SW/4 NE/4, Sec 30, T31N, R5W

12 COUNTY OR  
Rio Arriba

13 STATE  
New Mexico

19 ELEVATION CASINGHEAD

ROTARY TOOLS  
x

CABLE TOOLS

25 WAS DIRECTIONAL SURVEY MADE  
YES

27 WAS WELL CORED  
Yes

WELL COMPLETION OR RECOMPLETION REPORT AND LOG\*

1aTYPE OF WELLΓ OIL WELLX GAS WELLDRYOTHER

bTYPE OF COMPLETIONNEW WELLWORKOVERDEEPEENPLUG BACKX DIFF RESVROTHER

2NAME OF OPERATORWILLIAMS PRODUCTION COMPANY

3ADDRESS AND TELEPHONE NOP O Box 640, Aztec, NM 87410 (505) 634-4208

4LOCATION OF WELL (Report location clearly and in accordance with any State requirements)\*  
At Surface 2305' FNL & 2305' FEL, sec 30, T31N, R5W  
At top production interval reported below  
At total depth

14 PERMIT NO

DATE ISSUED

15 DATE  
SPUDDED  
4-13-08

16 DATE T D  
REACHED  
6-6-08

17 DATE COMPLETED (READY TO PRODUCE)  
10-31-08

18 ELEVATIONS (DK, RKB, RT,GR,ETC)\*  
6385' GR

20 TOTAL DEPTH, MD & TVD  
8243' MD

21 PLUG, BACK T D , MD & TVD  
8196'

22 IF MULTICOMP ,  
HOW MANY  
3 \*

23 INTERVALS  
DRILLED BY

24 PRODUCING INTERVAL(S), OF THIS COMPLETION - TOP, BOTTOM, NAME (MD AND TVD)\*  
BASIN MANCOS 6290' - 7849' CIBP set @ 7870' to isolate DK - \* Mesaverde to be completed at later date

26 TYPE ELECTRIC AND OTHER LOGS RUN

28 CASING REPORT (Report all strings set in well)

29 LINER RECORD

30 TUBING RECORD

31 PERFORATION RECORD (Interval, size, and number)

32 ACID, SHOT, FRACTURE, CEMENT SQUEEZE, ETC

33 PRODUCTION

34 DISPOSITION OF GAS (Solid, used for fuel, vented, etc ) TO BE SOLD

35 LIST OF ATTACHMENTS SUMMARY OF POROUS ZONES, WELLBORE DIAGRAM

36 I hereby certify that the foregoing and attached information is complete and correct as determined from all available records

SIGNED

TITLE Drlg COM

DATE 11-5-08

UNITED STATES  
DEPARTMENT OF THE INTERIOR  
BUREAU OF LAND MANAGEMENT

SUBMIT IN  
DUPLICATE

(See other instructions on  
reverse side)

FORM APPROVED  
OMB NO 1004-0137  
Expires February 28, 1995

5 LEASE DESIGNATION AND LEASE NO NMSF-078764							
6 IF INDIAN, ALLOTTEE OR							
7 UNIT AGREEMENT NAME Rosa Unit							
8 FARM OR LEASE NAME, WELL NO Rosa Unit #166B							
9 API WELL NO 30-039-29841							
10 FIELD AND POOL, OR WILDCAT BASIN MANCOS							
11 SEC, T, R, M, OR BLOCK AND SURVEY OR AREA SW/4 NE/4, Sec 30, T31N, R5W							
12 COUNTY OR Rio Arriba		13 STATE New Mexico					
14 PERMIT NO		DATE ISSUED					
15 DATE SPUDDED 4-13-08		16 DATE T D REACHED 6-6-08		17 DATE COMPLETED (READY TO PRODUCE) 5/22/10			
18 ELEVATIONS (DK, RKB, RT, GR, ETC)* 6385' GR		19 ELEVATION CASINGHEAD					
20 TOTAL DEPTH, MD & TVD 8243' MD		21 PLUG, BACK T D, MD & TVD 8174'		22 IF MULTICOMP, HOW MANY 3 *			
23 INTERVALS DRILLED BY		ROTARY TOOLS x		CABLE TOOLS			
24 PRODUCING INTERVAL(S), OF THIS COMPLETION - TOP, BOTTOM, NAME (MD AND TVD)* BLANCO MESAVERDE 5433' - 5906'							
25 WAS DIRECTIONAL SURVEY MADE NO							
26 TYPE ELECTRIC AND OTHER LOGS RUN							
27 WAS WELL CORED Yes							
28 CASING REPORT (Report all strings set in well)							
CASING SIZE/GRADE		WEIGHT, LB /FT	DEPTH SET (MD)	HOLE SIZE	TOP OF CEMENT, CEMENTING RECORD	AMOUNT PULLED	
20", K-55		94#	426'	26"	739 SX - SURFACE		
13-3/8", L-80		68#	3703'	17-1/2"	2000 SX - SURFACE		
5-1/2", N-80		17 0#	8243'	7-7/8"	850 SX - 3200' (CBL)		
29 LINER RECORD							
SIZE	TOP (MD)	BOTTOM (MD)	SACKS CEMENT*	SCREEN (MD)	SIZE	DEPTH SET (MD)	PACKER SET (MD)
9-5/8", P-110, 47#	3480'	5969'	540 sx TOC - 3480' (CBL)		2 3/5", 4 7#, J-55, EUE 8rd	8024'	none
Mesaverde 2 <sup>nd</sup> stage (32, 34" holes)  1 <sup>st</sup> stage (54, 34" holes)				32 ACID, SHOT, FRACTURE, CEMENT SQUEEZE, ETC			
				DEPTH INTERVAL (MD)		AMOUNT AND KIND OF MATERIAL USED	
				5433' - 5630'		Frac with 80,000# 20/40 BASF	
5680' - 5906'		Frac with 80,000# 20/40 BASF					
33 PRODUCTION ** MV, MC & DK COMMINGLED PER DHC3409AZT							
DATE OF FIRST PRODUCTION		PRODUCTION METHOD (Flowing, gas lift, pumping-size and type of pump) Flowing				WELL STATUS (PRODUCING OR SI) PRODUCING	
DATE OF TEST	TESTED	CHOKE SIZE	PROD'N FOR TEST PERIOD	OIL - BBL	GAS - MCF	WATER - BBL	GAS-OIL RATIO
FLOW TBG PRESS	CASING PRESSURE	CALCULATED 24-HOUR RATE		OIL - BBL	GAS - MCF 1240 MCFD	WATER - BBL	OIL GRAVITY-API (CORR )
34 DISPOSITION OF GAS (Sold, used for fuel vented, etc ) TO BE SOLD						TEST WITNESSED BY Al Rector	
35 LIST OF ATTACHMENTS SUMMARY OF POROUS ZONES, WELLBORE DIAGRAM							
36 I hereby certify that the foregoing and attached information is complete and correct as determined from all available records							
SIGNED _____				TITLE Regulatory Specialist Sr		DATE 5/25/10	

Exploration & Production  
San Juan Basin Operations  
720 So. Main / PO Box 640  
Aztec, NM 87410  
505-634-4200 / 505-634-4205 fax



## Temporary Pit Inspection

### FACILITY INFORMATION

<b>Facility Name:</b> Rosa 166B	<b>API #:</b>
---------------------------------	---------------

<b>Pit Type:</b> x <input type="checkbox"/> Drilling <input type="checkbox"/> Workover <input type="checkbox"/> Cavitation	<b>Inspection:</b> <input type="checkbox"/> Daily (Rig) x <input type="checkbox"/> Weekly (Tech)
--	--

Pit Liner intact (no visible tears)	x <input type="checkbox"/> Yes <input type="checkbox"/> No If No, Report to EH&S immediately	Date / Time Reported to EH&S:
Pit Properly Fenced (no fence on rig side if on site)	x <input type="checkbox"/> Yes <input type="checkbox"/> No <input type="checkbox"/> Not Required (if site fully fenced)	
Pit Slopes intact	x <input type="checkbox"/> Yes <input type="checkbox"/> No	
Adequate freeboard (liquid level 2 <u>vertical</u> feet from berm top)	x <input type="checkbox"/> Yes <input type="checkbox"/> No <input type="checkbox"/> Not Applicable	
Does pit have oil or sheen on it?	<input type="checkbox"/> Yes x <input type="checkbox"/> No	
Flare Pit free of liquids	x <input type="checkbox"/> Yes <input type="checkbox"/> No <input type="checkbox"/> Not Applicable	
Comments: Pit has water in it from snow		
Inspector Signature: Jason Smith		
Printed Name: Jason Smith		
Title: Tech.		
Date: 3-22-10		Phone: (505)330-7257

Record Retention: Submit with Closure  
File: EH&S Well Files

Exploration & Production  
San Juan Basin Operations  
720 So. Main / PO Box 640  
Aztec, NM 87410  
505-634-4200 / 505-634-4205 fax



## Temporary Pit Inspection

### FACILITY INFORMATION

<b>Facility Name:</b> Rosa 166B	<b>API #:</b>
---------------------------------	---------------

<b>Pit Type:</b> <input checked="" type="checkbox"/> Drilling <input type="checkbox"/> Workover <input type="checkbox"/> Cavitation	<b>Inspection:</b> <input type="checkbox"/> Daily (Rig) <input checked="" type="checkbox"/> Weekly (Tech)
---	---

Pit Liner intact (no visible tears)	<input checked="" type="checkbox"/> Yes <input type="checkbox"/> No If No, Report to EH&S immediately	Date / Time Reported to EH&S:
Pit Properly Fenced (no fence on rig side if on site)	<input checked="" type="checkbox"/> Yes <input type="checkbox"/> No <input type="checkbox"/> Not Required (if site fully fenced)	
Pit Slopes intact	<input checked="" type="checkbox"/> Yes <input type="checkbox"/> No	
Adequate freeboard (liquid level 2 <u>vertical</u> feet from berm top)	<input checked="" type="checkbox"/> Yes <input type="checkbox"/> No <input type="checkbox"/> Not Applicable	
Does pit have oil or sheen on it?	<input type="checkbox"/> Yes <input checked="" type="checkbox"/> No	
Flare Pit free of liquids	<input checked="" type="checkbox"/> Yes <input type="checkbox"/> No <input type="checkbox"/> Not Applicable	
Comments: Pit has water in it from snow		
Inspector Signature: Jason Smith		
Printed Name: Jason Smith		
Title: Tech.		
Date: 3-31-10 Phone: (505)330-7257		

Record Retention: Submit with Closure  
File: EH&S Well Files



Exploration & Production  
San Juan Basin Operations  
720 So. Main / PO Box 640  
Aztec, NM 87410  
505-634-4200 / 505-634-4205 fax



## Temporary Pit Inspection

### FACILITY INFORMATION

<b>Facility Name:</b> Rosa 166B	<b>API #:</b>
---------------------------------	---------------

<b>Pit Type:</b> <input checked="" type="checkbox"/> Drilling <input type="checkbox"/> Workover <input type="checkbox"/> Cavitation	<b>Inspection:</b> <input type="checkbox"/> Daily (Rig) <input checked="" type="checkbox"/> Weekly (Tech)
--	---

Pit Liner intact (no visible tears)	<input checked="" type="checkbox"/> Yes <input type="checkbox"/> No If No, Report to EH&S immediately	Date / Time Reported to EH&S:
Pit Properly Fenced (no fence on rig side if on site)	<input checked="" type="checkbox"/> Yes <input type="checkbox"/> No <input type="checkbox"/> Not Required (if site fully fenced)	
Pit Slopes intact	<input checked="" type="checkbox"/> Yes <input type="checkbox"/> No	
Adequate freeboard (liquid level 2 <u>vertical</u> feet from berm top)	<input checked="" type="checkbox"/> Yes <input type="checkbox"/> No <input type="checkbox"/> Not Applicable	
Does pit have oil or sheen on it?	<input type="checkbox"/> Yes <input checked="" type="checkbox"/> No	
Flare Pit free of liquids	<input checked="" type="checkbox"/> Yes <input type="checkbox"/> No <input type="checkbox"/> Not Applicable	
Comments:  Pit has water in it from snow		
Inspector Signature: Jason Smith		
Printed Name: Jason Smith		
Title: Tech.		
Date: 4-05-10 Phone: (505)330-7257		

Record Retention: Submit with Closure  
File. EH&S Well Files

Exploration & Production  
San Juan Basin Operations  
720 So. Main / PO Box 640  
Aztec, NM 87410  
505-634-4200 / 505-634-4205 fax



## Temporary Pit Inspection

### FACILITY INFORMATION

<b>Facility Name:</b> Rosa 166B	<b>API #:</b>
---------------------------------	---------------

<b>Pit Type:</b> <input checked="" type="checkbox"/> Drilling <input type="checkbox"/> Workover <input type="checkbox"/> Cavitation	<b>Inspection:</b> <input type="checkbox"/> Daily (Rig) <input checked="" type="checkbox"/> Weekly (Tech)
--	---

Pit Liner intact (no visible tears)	<input checked="" type="checkbox"/> Yes <input type="checkbox"/> No If No, Report to EH&S immediately	Date / Time Reported to EH&S:
Pit Properly Fenced (no fence on rig side if on site)	<input checked="" type="checkbox"/> Yes <input type="checkbox"/> No <input type="checkbox"/> Not Required (if site fully fenced)	
Pit Slopes intact	<input checked="" type="checkbox"/> Yes <input type="checkbox"/> No	
Adequate freeboard (liquid level 2 <u>vertical</u> feet from berm top)	<input checked="" type="checkbox"/> Yes <input type="checkbox"/> No <input type="checkbox"/> Not Applicable	
Does pit have oil or sheen on it?	<input type="checkbox"/> Yes <input checked="" type="checkbox"/> No	
Flare Pit free of liquids	<input checked="" type="checkbox"/> Yes <input type="checkbox"/> No <input type="checkbox"/> Not Applicable	
Comments: Pit has water in it from snow		
Inspector Signature: Jason Smith		
Printed Name: Jason Smith		
Title: Tech.		
Date: 4-15-10		Phone: (505)330-7257

Record Retention: Submit with Closure  
File: EH&S Well Files

Exploration & Production  
San Juan Basin Operations  
720 So. Main / PO Box 640  
Aztec, NM 87410  
505-634-4200 / 505-634-4205 fax



## Temporary Pit Inspection

### FACILITY INFORMATION

<b>Facility Name:</b> Rosa 166B	<b>API #:</b>
---------------------------------	---------------

<b>Pit Type:</b> <input checked="" type="checkbox"/> Drilling <input type="checkbox"/> Workover <input type="checkbox"/> Cavitation	<b>Inspection:</b> <input type="checkbox"/> Daily (Rig) <input checked="" type="checkbox"/> Weekly (Tech)
---	---

Pit Liner intact (no visible tears)	<input checked="" type="checkbox"/> Yes <input type="checkbox"/> No If No, Report to EH&S immediately	Date / Time Reported to EH&S:
Pit Properly Fenced (no fence on rig side if on site)	<input checked="" type="checkbox"/> Yes <input type="checkbox"/> No <input type="checkbox"/> Not Required (if site fully fenced)	
Pit Slopes intact	<input checked="" type="checkbox"/> Yes <input type="checkbox"/> No	
Adequate freeboard (liquid level 2 <u>vertical</u> feet from berm top)	<input checked="" type="checkbox"/> Yes <input type="checkbox"/> No <input type="checkbox"/> Not Applicable	
Does pit have oil or sheen on it?	<input type="checkbox"/> Yes <input checked="" type="checkbox"/> No	
Flare Pit free of liquids	<input checked="" type="checkbox"/> Yes <input type="checkbox"/> No <input type="checkbox"/> Not Applicable	
Comments: Pit has water in it from snow		
Inspector Signature: Jason Smith		
Printed Name: Jason Smith		
Title: Tech.		
Date: 4-20-10 Phone: (505)330-7257		

Record Retention: Submit with Closure  
File: EH&S Well Files

Exploration & Production  
San Juan Basin Operations  
720 So. Main / PO Box 640  
Aztec, NM 87410  
505-634-4200 / 505-634-4205 fax



## Temporary Pit Inspection

### FACILITY INFORMATION

<b>Facility Name:</b> Rosa 166B	<b>API #:</b>
---------------------------------	---------------

<b>Pit Type:</b> <input checked="" type="checkbox"/> Drilling <input type="checkbox"/> Workover <input type="checkbox"/> Cavitation	<b>Inspection:</b> <input type="checkbox"/> Daily (Rig) <input checked="" type="checkbox"/> Weekly (Tech)
---	---

Pit Liner intact (no visible tears)	<input checked="" type="checkbox"/> Yes <input type="checkbox"/> No If No, Report to EH&S immediately	Date / Time Reported to EH&S:
Pit Properly Fenced (no fence on rig side if on site)	<input checked="" type="checkbox"/> Yes <input type="checkbox"/> No <input type="checkbox"/> Not Required (if site fully fenced)	
Pit Slopes intact	<input checked="" type="checkbox"/> Yes <input type="checkbox"/> No	
Adequate freeboard (liquid level 2 <u>vertical</u> feet from berm top)	<input checked="" type="checkbox"/> Yes <input type="checkbox"/> No <input type="checkbox"/> Not Applicable	
Does pit have oil or sheen on it?	<input type="checkbox"/> Yes <input checked="" type="checkbox"/> No	
Flare Pit free of liquids	<input checked="" type="checkbox"/> Yes <input type="checkbox"/> No <input type="checkbox"/> Not Applicable	
Comments:  Pit has water in it from snow		
Inspector Signature: Jason Smith		
Printed Name: Jason Smith		
Title: Tech.		
Date: 4-28-10 Phone: (505)330-7257		

Record Retention: Submit with Closure  
File: EH&S Well Files

Exploration & Production  
San Juan Basin Operations  
720 So. Main / PO Box 640  
Aztec, NM 87410  
505-634-4200 / 505-634-4205 fax



## Temporary Pit Inspection

### FACILITY INFORMATION

Facility Name: ROSA 166-B

API #: 30-039-29841

Pit Type: ☐ Drilling ☐ Workover ☒ Cavitation Inspection: ☒ Daily ☐ Weekly ☐ Monthly

Pit Liner intact (no visible tears)	Yes <input checked="" type="checkbox"/> If No, Report to EH&S immediately	Date / Time Reported:
Pit Properly Fenced (no fence on rig side if on site)	Yes <input checked="" type="checkbox"/> Not Required (if site fully fenced)	
Pit Slopes intact	Yes <input checked="" type="checkbox"/>	
Adequate freeboard (liquid level 2 vertical feet from berm top)	Yes <input checked="" type="checkbox"/> Not Applicable	
Free oil or sheen present on pit	Yes <input checked="" type="checkbox"/>	
Flare Pit free of liquids	Yes <input checked="" type="checkbox"/> Not Applicable	
Comments: PIT IN EXCELLENT CONDITION.		
Inspector Signature: ELLIS KING		
Printed Name: ELLIS KING		
Title: CONSULTANT		
Date: 6/18/08 Phone: 320-4736		

Record Retention: Submit with Closure  
File: EH&S

Exploration & Production  
San Juan Basin Operations  
720 So. Main / PO Box 640  
Aztec, NM 87410  
505-634-4200 / 505-634-4205 fax



## Temporary Pit Inspection

### FACILITY INFORMATION

<b>Facility Name:</b> ROSA 166-B	<b>API #:</b> 30-039-29841
----------------------------------	----------------------------

<b>Pit Type:</b> <input type="checkbox"/> Drilling <input type="checkbox"/> Workover <input checked="" type="checkbox"/> Cavitation	<b>Inspection:</b> <input checked="" type="checkbox"/> Daily <input type="checkbox"/> Weekly <input type="checkbox"/> Monthly
---	---

Pit Liner intact (no visible tears)	Yes <input checked="" type="checkbox"/> If No, Report to EH&S immediately	Date / Time Reported:
Pit Properly Fenced (no fence on rig side if on site)	Yes <input checked="" type="checkbox"/> Not Required (if site fully fenced)	
Pit Slopes intact	Yes <input checked="" type="checkbox"/>	
Adequate freeboard (liquid level 2 <u>vertical</u> feet from berm top)	Yes <input checked="" type="checkbox"/> Not Applicable	
Free oil or sheen present on pit	Yes <input checked="" type="checkbox"/>	
Flare Pit free of liquids	Yes <input checked="" type="checkbox"/> Not Applicable	
Comments: PIT IN EXCELLENT CONDITION.		
Inspector Signature: ELLIS KING		
Printed Name: ELLIS KING		
Title: CONSULTANT		
Date: 6/18/08 Phone: 320-4736		

Record Retention: Submit with Closure  
File: EH&S



2001-2009 WellEz Information Management, LLC All rights reserved ver 111709jc

Exploration & Production  
San Juan Basin Operations  
720 So. Main / PO Box 640  
Aztec, NM 87410  
505-634-4200 / 505-634-4205 fax



## Temporary Pit Inspection

### FACILITY INFORMATION

<b>Facility Name:</b> ROSA 166-B	<b>API #:</b> 30-039-29841
----------------------------------	----------------------------

<b>Pit Type:</b> <input type="checkbox"/> Drilling <input checked="" type="checkbox"/> Workover <input type="checkbox"/> Cavitation	<b>Inspection:</b> <input checked="" type="checkbox"/> Daily (Rig) <input type="checkbox"/> Weekly (Tech)
---	---

Pit Liner intact (no visible tears)	X <input type="checkbox"/> Yes <input type="checkbox"/> No If No, Report to EH&S immediately	Date / Time Reported: 6/27/08 1500 HRS
Pit Properly Fenced (no fence on rig side if on site)	X <input type="checkbox"/> Yes <input type="checkbox"/> No <input type="checkbox"/> Not Required (if site fully fenced)	
Pit Slopes intact	X <input type="checkbox"/> Yes <input type="checkbox"/> No	
Adequate freeboard (liquid level 2 <u>vertical</u> feet from berm top)	X <input type="checkbox"/> Yes <input type="checkbox"/> No <input type="checkbox"/> Not Applicable	
Free oil or sheen present on pit	X <input type="checkbox"/> Yes <input type="checkbox"/> No	
Flare Pit free of liquids	X <input type="checkbox"/> Yes <input type="checkbox"/> No <input type="checkbox"/> Not Applicable	
Comments: PIT IN EXCELLENT CONDITION.		
Inspector Signature: Ellis King		
Printed Name: Ellis King		
Title: consultant		
Date: 6/27/08 Phone: 320-4736		

Record Retention: Submit with Closure  
File: EH&S Well Files



Exploration & Production  
San Juan Basin Operations  
720 So. Main / PO Box 640  
Aztec, NM 87410  
505-634-4200 / 505-634-4205 fax



## Temporary Pit Inspection

### FACILITY INFORMATION

<b>Facility Name:</b> ROSA 166-B	<b>API #:</b> 30-039-29841
----------------------------------	----------------------------

<b>Pit Type:</b> <input type="checkbox"/> Drilling <input checked="" type="checkbox"/> Workover <input type="checkbox"/> Cavitation	<b>Inspection:</b> <input checked="" type="checkbox"/> Daily (Rig) <input type="checkbox"/> Weekly (Tech)
---	---

Pit Liner intact (no visible tears)	X <input type="checkbox"/> Yes <input type="checkbox"/> No If No, Report to EH&S immediately	Date / Time Reported: 6/29/08 1500 HRS
Pit Properly Fenced (no fence on rig side if on site)	X <input type="checkbox"/> Yes <input type="checkbox"/> No <input type="checkbox"/> Not Required (if site fully fenced)	
Pit Slopes intact	X <input type="checkbox"/> Yes <input type="checkbox"/> No	
Adequate freeboard (liquid level 2 vertical feet from berm top)	X <input type="checkbox"/> Yes <input type="checkbox"/> No <input type="checkbox"/> Not Applicable	
Free oil or sheen present on pit	X <input type="checkbox"/> Yes <input type="checkbox"/> No	
Flare Pit free of liquids	X <input type="checkbox"/> Yes <input type="checkbox"/> No <input type="checkbox"/> Not Applicable	
Comments: PIT IN EXCELLENT CONDITION.		
Inspector Signature: Ellis King		
Printed Name: Ellis King		
Title: consultant		
Date: 6/29/08 Phone: 320-4736		

Record Retention: Submit with Closure  
File: EH&S Well Files

Exploration & Production  
San Juan Basin Operations  
720 So. Main / PO Box 640  
Aztec, NM 87410  
505-634-4200 / 505-634-4205 fax



## Temporary Pit Inspection

### FACILITY INFORMATION

<b>Facility Name:</b> ROSA 166-B	<b>API #:</b> 30-039-29841
----------------------------------	----------------------------

<b>Pit Type:</b> <input type="checkbox"/> Drilling <input checked="" type="checkbox"/> Workover <input type="checkbox"/> Cavitation	<b>Inspection:</b> <input checked="" type="checkbox"/> Daily (Rig) <input type="checkbox"/> Weekly (Tech)
---	---

Pit Liner intact (no visible tears)	X <input type="checkbox"/> Yes <input type="checkbox"/> No If No, Report to EH&S immediately	Date / Time Reported: 6/30/08 1500 HRS
Pit Properly Fenced (no fence on rig side if on site)	X <input type="checkbox"/> Yes <input type="checkbox"/> No <input type="checkbox"/> Not Required (if site fully fenced)	
Pit Slopes intact	X <input type="checkbox"/> Yes <input type="checkbox"/> No	
Adequate freeboard (liquid level 2 <u>vertical</u> feet from berm top)	X <input type="checkbox"/> Yes <input type="checkbox"/> No <input type="checkbox"/> Not Applicable	
Free oil or sheen present on pit	X <input type="checkbox"/> Yes <input type="checkbox"/> No	
Flare Pit free of liquids	X <input type="checkbox"/> Yes <input type="checkbox"/> No <input type="checkbox"/> Not Applicable	
Comments: PIT IN EXCELLENT CONDITION. MOVING OFF OF LOCATION W/ RIG AND EQUIPMENT. THIS IS MY FINAL PIT REPORT. Ellis King		
Inspector Signature: Ellis King		
Printed Name: Ellis King		
Title: consultant		
Date: 6/30/08 Phone: 320-4736		

Record Retention: Submit with Closure  
File: EH&S Well Files

Exploration & Production  
San Juan Basin Operations  
720 So. Main / PO Box 640  
Aztec, NM 87410  
505-634-4200 / 505-634-4205 fax



## Temporary Pit Inspection

### FACILITY INFORMATION

<b>Facility Name:</b> Rosa 166B	<b>API #:</b>
---------------------------------	---------------

<b>Pit Type:</b> <input checked="" type="checkbox"/> Drilling <input type="checkbox"/> Workover <input type="checkbox"/> Cavitation	<b>Inspection:</b> <input type="checkbox"/> Daily (Rig) <input checked="" type="checkbox"/> Weekly (Tech)
---	---

Pit Liner intact (no visible tears)	<input checked="" type="checkbox"/> Yes <input type="checkbox"/> No If No, Report to EH&S immediately	Date / Time Reported to EH&S:
Pit Properly Fenced (no fence on rig side if on site)	<input checked="" type="checkbox"/> Yes <input type="checkbox"/> No <input type="checkbox"/> Not Required (if site fully fenced)	
Pit Slopes intact	<input checked="" type="checkbox"/> Yes <input type="checkbox"/> No	
Adequate freeboard (liquid level 2 vertical feet from berm top)	<input checked="" type="checkbox"/> Yes <input type="checkbox"/> No <input type="checkbox"/> Not Applicable	
Does pit have oil or sheen on it?	<input type="checkbox"/> Yes <input checked="" type="checkbox"/> No	
Flare Pit free of liquids	<input checked="" type="checkbox"/> Yes <input type="checkbox"/> No <input type="checkbox"/> Not Applicable	
Comments: Can not access location due to snow conditions		
Inspector Signature: Jason Smith		
Printed Name: Jason Smith		
Title: Tech.		
Date: 1-04-10 -01-29-2010		Phone: (505)330-7257

Record Retention: Submit with Closure  
File: EH&S Well Files

Exploration & Production  
San Juan Basin Operations  
720 So. Main / PO Box 640  
Aztec, NM 87410  
505-634-4200 / 505-634-4205 fax



## Temporary Pit Inspection

### FACILITY INFORMATION

<b>Facility Name:</b>	<b>API #:</b>
Rosa #166B	30-039-29841

<b>Pit Type:</b> x Drilling <input type="checkbox"/> Workover <input type="checkbox"/> Cavitation	<b>Inspection:</b> <input type="checkbox"/> Daily (Rig) x Weekly (Tech)
---	---

Pit Liner intact (no visible tears)	x Yes <input type="checkbox"/> No If No, Report to EH&S immediately	Date / Time Reported to EH&S:
Pit Properly Fenced (no fence on rig side if on site)	x Yes <input type="checkbox"/> No <input type="checkbox"/> Not Required (if site fully fenced)	
Pit Slopes intact	x Yes <input type="checkbox"/> No	
Adequate freeboard (liquid level 2 <u>vertical</u> feet from berm top)	x Yes <input type="checkbox"/> No <input type="checkbox"/> Not Applicable	
Does pit have oil or sheen on it?	<input type="checkbox"/> Yes x No	
Flare Pit free of liquids	x Yes <input type="checkbox"/> No <input type="checkbox"/> Not Applicable	
Comments:		
Inspector Signature:		
Printed Name: Levi Thorson		
Title: Field Technician		
Date: 3/2/09 Phone: (505)330-6034		

Record Retention: Submit with Closure  
File: EH&S Well Files

Exploration & Production  
San Juan Basin Operations  
720 So. Main / PO Box 640  
Aztec, NM 87410  
505-634-4200 / 505-634-4205 fax



## Temporary Pit Inspection

### FACILITY INFORMATION

<b>Facility Name:</b>	<b>API #:</b>
Rosa #166B	30-039-29841

<b>Pit Type:</b> <input checked="" type="checkbox"/> Drilling <input type="checkbox"/> Workover <input type="checkbox"/> Cavitation	<b>Inspection:</b> <input type="checkbox"/> Daily (Rig) <input checked="" type="checkbox"/> Weekly (Tech)
---	---

Pit Liner intact (no visible tears)	<input checked="" type="checkbox"/> Yes <input type="checkbox"/> No If No, Report to EH&S immediately	Date / Time Reported to EH&S:
Pit Properly Fenced (no fence on rig side if on site)	<input checked="" type="checkbox"/> Yes <input type="checkbox"/> No <input type="checkbox"/> Not Required (if site fully fenced)	
Pit Slopes intact	<input checked="" type="checkbox"/> Yes <input type="checkbox"/> No	
Adequate freeboard (liquid level 2 <u>vertical</u> feet from berm top)	<input checked="" type="checkbox"/> Yes <input type="checkbox"/> No <input type="checkbox"/> Not Applicable	
Does pit have oil or sheen on it?	<input type="checkbox"/> Yes <input checked="" type="checkbox"/> No	
Flare Pit free of liquids	<input checked="" type="checkbox"/> Yes <input type="checkbox"/> No <input type="checkbox"/> Not Applicable	
Comments:		
Inspector Signature:		
Printed Name: Levi Thorson		
Title: Field Technician		
Date: 3/13/09 Phone: (505)330-6034		

Record Retention: Submit with Closure  
File: EH&S Well Files

Exploration & Production  
San Juan Basin Operations  
720 So. Main / PO Box 640  
Aztec, NM 87410  
505-634-4200 / 505-634-4205 fax



## Temporary Pit Inspection

### FACILITY INFORMATION

<b>Facility Name:</b> Rosa 166B	<b>API #:</b>
---------------------------------	---------------

<b>Pit Type:</b> <input checked="" type="checkbox"/> Drilling <input type="checkbox"/> Workover <input type="checkbox"/> Cavitation	<b>Inspection:</b> <input type="checkbox"/> Daily (Rig) <input checked="" type="checkbox"/> Weekly (Tech)
--	---

Pit Liner intact (no visible tears)	<input checked="" type="checkbox"/> Yes <input type="checkbox"/> No If No, Report to EH&S immediately	Date / Time Reported to EH&S:
Pit Properly Fenced (no fence on rig side if on site)	<input checked="" type="checkbox"/> Yes <input type="checkbox"/> No <input type="checkbox"/> Not Required (if site fully fenced)	
Pit Slopes intact	<input checked="" type="checkbox"/> Yes <input type="checkbox"/> No	
Adequate freeboard (liquid level 2 <u>vertical</u> feet from berm top)	<input checked="" type="checkbox"/> Yes <input type="checkbox"/> No <input type="checkbox"/> Not Applicable	
Does pit have oil or sheen on it?	<input type="checkbox"/> Yes <input checked="" type="checkbox"/> No	
Flare Pit free of liquids	<input checked="" type="checkbox"/> Yes <input type="checkbox"/> No <input type="checkbox"/> Not Applicable	
Comments: Pit is full of snow		
Inspector Signature: Jason Smith		
Printed Name: Jason Smith		
Title: Tech.		
Date: 3-15-10 Phone: (505)330-7257		

Record Retention: Submit with Closure  
File: EH&S Well Files

Exploration & Production  
San Juan Basin Operations  
720 So. Main / PO Box 640  
Aztec, NM 87410  
505-634-4200 / 505-634-4205 fax



## Temporary Pit Inspection

### FACILITY INFORMATION

<b>Facility Name:</b>	<b>API #:</b>
Rosa #166B	30-039-29841

<b>Pit Type:</b> x Drilling <input type="checkbox"/> Workover <input type="checkbox"/> Cavitation	<b>Inspection:</b> <input type="checkbox"/> Daily (Rig) x Weekly (Tech)
---	---

Pit Liner intact (no visible tears)	x Yes <input type="checkbox"/> No If No, Report to EH&S immediately	Date / Time Reported to EH&S:
Pit Properly Fenced (no fence on rig side if on site)	x Yes <input type="checkbox"/> No <input type="checkbox"/> Not Required (if site fully fenced)	
Pit Slopes intact	x Yes <input type="checkbox"/> No	
Adequate freeboard (liquid level 2 <u>vertical</u> feet from berm top)	x Yes <input type="checkbox"/> No <input type="checkbox"/> Not Applicable	
Does pit have oil or sheen on it?	<input type="checkbox"/> Yes x No	
Flare Pit free of liquids	x Yes <input type="checkbox"/> No <input type="checkbox"/> Not Applicable	
Comments:		
Inspector Signature:		
Printed Name: Levi Thorson		
Title: Field Technician		
Date: 3/20/09 Phone: (505)330-6034		

Record Retention: Submit with Closure  
File: EH&S Well Files

Exploration & Production  
San Juan Basin Operations  
720 So. Main / PO Box 640  
Aztec, NM 87410  
505-634-4200 / 505-634-4205 fax



## Temporary Pit Inspection

### FACILITY INFORMATION

<b>Facility Name:</b>	<b>API #:</b>
Rosa #166B	30-039-29841

<b>Pit Type:</b> <input checked="" type="checkbox"/> Drilling <input type="checkbox"/> Workover <input type="checkbox"/> Cavitation	<b>Inspection:</b> <input type="checkbox"/> Daily (Rig) <input checked="" type="checkbox"/> Weekly (Tech)
---	---

Pit Liner intact (no visible tears)	<input checked="" type="checkbox"/> Yes <input type="checkbox"/> No If No, Report to EH&S immediately	Date / Time Reported to EH&S:
Pit Properly Fenced (no fence on rig side if on site)	<input checked="" type="checkbox"/> Yes <input type="checkbox"/> No <input type="checkbox"/> Not Required (if site fully fenced)	
Pit Slopes intact	<input checked="" type="checkbox"/> Yes <input type="checkbox"/> No	
Adequate freeboard (liquid level 2 <u>vertical</u> feet from berm top)	<input checked="" type="checkbox"/> Yes <input type="checkbox"/> No <input type="checkbox"/> Not Applicable	
Does pit have oil or sheen on it?	<input type="checkbox"/> Yes <input checked="" type="checkbox"/> No	
Flare Pit free of liquids	<input checked="" type="checkbox"/> Yes <input type="checkbox"/> No <input type="checkbox"/> Not Applicable	
Comments:		
Inspector Signature:		
Printed Name: Levi Thorson		
Title: Field Technician		
Date: 3/23/09 Phone: (505)330-6034		

Record Retention: Submit with Closure  
File: EH&S Well Files



Exploration & Production  
San Juan Basin Operations  
720 So. Main / PO Box 640  
Aztec, NM 87410  
505-634-4200 / 505-634-4205 fax



## Temporary Pit Inspection

### FACILITY INFORMATION

<b>Facility Name:</b>	<b>API #:</b>
Rosa #166B	30-039-29841

<b>Pit Type:</b> <input checked="" type="checkbox"/> Drilling <input type="checkbox"/> Workover <input type="checkbox"/> Cavitation	<b>Inspection:</b> <input type="checkbox"/> Daily (Rig) <input checked="" type="checkbox"/> Weekly (Tech)
---	---

Pit Liner intact (no visible tears)	x Yes <input type="checkbox"/> No If No, Report to EH&S immediately	Date / Time Reported to EH&S:
Pit Properly Fenced (no fence on rig side if on site)	x Yes <input type="checkbox"/> No <input type="checkbox"/> Not Required (if site fully fenced)	
Pit Slopes intact	x Yes <input type="checkbox"/> No	
Adequate freeboard (liquid level 2 <u>vertical</u> feet from berm top)	x Yes <input type="checkbox"/> No <input type="checkbox"/> Not Applicable	
Does pit have oil or sheen on it?	<input type="checkbox"/> Yes x No	
Flare Pit free of liquids	x Yes <input type="checkbox"/> No <input type="checkbox"/> Not Applicable	
Comments:		
Inspector Signature:		
Printed Name: Levi Thorson		
Title: Field Technician		
Date: 4/2/09 Phone: (505)330-6034		

Record Retention: Submit with Closure  
File: EH&S Well Files

Exploration & Production  
San Juan Basin Operations  
720 So. Main / PO Box 640  
Aztec, NM 87410  
505-634-4200 / 505-634-4205 fax



## Temporary Pit Inspection

### FACILITY INFORMATION

<b>Facility Name:</b>	<b>API #:</b>
Rosa #166B	30-039-29841

<b>Pit Type:</b> x Drilling <input type="checkbox"/> Workover <input type="checkbox"/> Cavitation	<b>Inspection:</b> <input type="checkbox"/> Daily (Rig) x Weekly (Tech)
---	---

Pit Liner intact (no visible tears)	x Yes <input type="checkbox"/> No If No, Report to EH&S immediately	Date / Time Reported to EH&S:
Pit Properly Fenced (no fence on rig side if on site)	x Yes <input type="checkbox"/> No <input type="checkbox"/> Not Required (if site fully fenced)	
Pit Slopes intact	x Yes <input type="checkbox"/> No	
Adequate freeboard (liquid level 2 <u>vertical</u> feet from berm top)	x Yes <input type="checkbox"/> No <input type="checkbox"/> Not Applicable	
Does pit have oil or sheen on it?	<input type="checkbox"/> Yes x No	
Flare Pit free of liquids	x Yes <input type="checkbox"/> No <input type="checkbox"/> Not Applicable	
Comments:		
Inspector Signature:		
Printed Name: Levi Thorson		
Title: Field Technician		
Date: 4/14/09 Phone: (505)330-6034		

Record Retention: Submit with Closure  
File: EH&S Well Files

Exploration & Production  
San Juan Basin Operations  
720 So. Main / PO Box 640  
Aztec, NM 87410  
505-634-4200 / 505-634-4205 fax



## Temporary Pit Inspection

### FACILITY INFORMATION

<b>Facility Name:</b>	<b>API #:</b>
Rosa #166B	30-039-29841

<b>Pit Type:</b> x Drilling <input type="checkbox"/> Workover <input type="checkbox"/> Cavitation	<b>Inspection:</b> <input type="checkbox"/> Daily (Rig) x Weekly (Tech)
---	---

Pit Liner intact (no visible tears)	x Yes <input type="checkbox"/> No If No, Report to EH&S immediately	Date / Time Reported to EH&S:
Pit Properly Fenced (no fence on rig side if on site)	x Yes <input type="checkbox"/> No <input type="checkbox"/> Not Required (if site fully fenced)	
Pit Slopes intact	x Yes <input type="checkbox"/> No	
Adequate freeboard (liquid level 2 <u>vertical</u> feet from berm top)	x Yes <input type="checkbox"/> No <input type="checkbox"/> Not Applicable	
Does pit have oil or sheen on it?	<input type="checkbox"/> Yes x No	
Flare Pit free of liquids	x Yes <input type="checkbox"/> No <input type="checkbox"/> Not Applicable	
Comments:		
Inspector Signature:		
Printed Name: Levi Thorson		
Title: Field Technician		
Date: 4/23/09 Phone: (505)330-6034		

Record Retention: Submit with Closure  
File: EH&S Well Files

Exploration & Production  
San Juan Basin Operations  
720 So. Main / PO Box 640  
Aztec, NM 87410  
505-634-4200 / 505-634-4205 fax



## Temporary Pit Inspection

### FACILITY INFORMATION

Facility Name: Rosa #166B	API #:
---------------------------	--------

Pit Type: <input checked="" type="checkbox"/> Drilling <input type="checkbox"/> Workover <input type="checkbox"/> Cavitation	Inspection: <input type="checkbox"/> Daily (Rig) <input checked="" type="checkbox"/> Weekly (Tech)
---	--

Pit Liner intact (no visible tears)	<input checked="" type="checkbox"/> Yes <input type="checkbox"/> No If No, Report to EH&S immediately	7/10/08
Pit Properly Fenced (no fence on rig side if on site)	<input checked="" type="checkbox"/> Yes <input type="checkbox"/> No <input type="checkbox"/> Not Required (if site fully fenced)	
Pit Slopes intact	<input checked="" type="checkbox"/> Yes <input type="checkbox"/> No	
Adequate freeboard (liquid level 2 <u>vertical</u> feet from berm top)	<input checked="" type="checkbox"/> Yes <input type="checkbox"/> No <input type="checkbox"/> Not Applicable	
Free oil or sheen present on pit	<input type="checkbox"/> Yes <input checked="" type="checkbox"/> No	
Flare Pit free of liquids	<input checked="" type="checkbox"/> Yes <input type="checkbox"/> No <input type="checkbox"/> Not Applicable	
Comments:		
Inspector Signature:		
Printed Name: bill beevers		
Tech		
7/10/08		

Record Retention: Submit with Closure  
File: EH&S Well Files

Exploration & Production  
San Juan Basin Operations  
720 So. Main / PO Box 640  
Aztec, NM 87410  
505-634-4200 / 505-634-4205 fax



## Temporary Pit Inspection

### FACILITY INFORMATION

<b>Facility Name:</b> Rosa #166B	<b>API #:</b>
----------------------------------	---------------

<b>Pit Type:</b> x <input type="checkbox"/> Drilling <input type="checkbox"/> Workover <input type="checkbox"/> Cavitation	<b>Inspection:</b> <input type="checkbox"/> Daily (Rig) x <input type="checkbox"/> Weekly (Tech)
---	--

Pit Liner intact (no visible tears)	x <input type="checkbox"/> Yes <input type="checkbox"/> No If No, Report to EH&S immediately	7/18/08
Pit Properly Fenced (no fence on rig side if on site)	x <input type="checkbox"/> Yes <input type="checkbox"/> No <input type="checkbox"/> Not Required (if site fully fenced)	
Pit Slopes intact	x <input type="checkbox"/> Yes <input type="checkbox"/> No	
Adequate freeboard (liquid level 2 <u>vertical</u> feet from berm top)	x <input type="checkbox"/> Yes <input type="checkbox"/> No <input type="checkbox"/> Not Applicable	
Free oil or sheen present on pit	<input type="checkbox"/> Yes x <input type="checkbox"/> No	
Flare Pit free of liquids	x <input type="checkbox"/> Yes <input type="checkbox"/> No <input type="checkbox"/> Not Applicable	
Comments:		
Inspector Signature:		
Printed Name:bill beevers		
Tech		
7/18/08		

Record Retention: Submit with Closure  
File: EH&S Well Files

Exploration & Production  
San Juan Basin Operations  
720 So. Main / PO Box 640  
Aztec, NM 87410  
505-634-4200 / 505-634-4205 fax



## Temporary Pit Inspection

### FACILITY INFORMATION

Facility Name: Rosa 166B

API #: 30-039-29841

Pit Type: ☐ Drilling ☐ Workover ☐ Cavitation Inspection: ☐ Daily (Rig) x☒ Weekly (Tech)

Pit Liner intact (no visible tears)	x <input type="checkbox"/> Yes <input type="checkbox"/> No If No, Report to EH&S immediately	Date / Time Reported: 7/24/2008
Pit Properly Fenced (no fence on rig side if on site)	x <input type="checkbox"/> Yes <input type="checkbox"/> No <input type="checkbox"/> Not Required (if site fully fenced)	
Pit Slopes intact	x <input type="checkbox"/> Yes <input type="checkbox"/> No	
Adequate freeboard (liquid level 2 <u>vertical</u> feet from berm top)	x <input type="checkbox"/> Yes <input type="checkbox"/> No <input type="checkbox"/> Not Applicable	
Free oil or sheen present on pit	<input type="checkbox"/> Yes x <input checked="" type="checkbox"/> No	
Flare Pit free of liquids	<input type="checkbox"/> Yes x <input checked="" type="checkbox"/> No <input type="checkbox"/> Not Applicable	
Comments:		
Inspector Signature:		
Printed Name: Jeff Gordy		
Title: Lead Tech		
Date: 7/24/08 Phone: 486-3252		

Record Retention Submit with Closure  
File: EH&S Well Files

Exploration & Production  
San Juan Basin Operations  
720 So. Main / PO Box 640  
Aztec, NM 87410  
505-634-4200 / 505-634-4205 fax



## Temporary Pit Inspection

### FACILITY INFORMATION

Facility Name: Rosa 166B	API #: 30-039-29841
--------------------------	---------------------

Pit Type: x <input type="checkbox"/> Drilling <input type="checkbox"/> Workover <input type="checkbox"/> Cavitation	Inspection: <input type="checkbox"/> Daily (Rig) x <input type="checkbox"/> Weekly (Tech)
--	---

Pit Liner intact (no visible tears) tears on the east side of the liner	x <input type="checkbox"/> Yes <input type="checkbox"/> No If No, Report to EH&S immediately	Date / Time Reported: 9/12/08 0800
Pit Properly Fenced (no fence on rig side if on site) the fence was down around trailer and flow back tank	<input type="checkbox"/> Yes x <input type="checkbox"/> No <input type="checkbox"/> Not Required (if site fully fenced)	
Pit Slopes intact	x <input type="checkbox"/> Yes <input type="checkbox"/> No	
Adequate freeboard (liquid level 2 <u>vertical</u> feet from berm top)	x <input type="checkbox"/> Yes <input type="checkbox"/> No <input type="checkbox"/> Not Applicable	
Free oil or sheen present on pit	<input type="checkbox"/> Yes x <input type="checkbox"/> No	
Flare Pit free of liquids	<input type="checkbox"/> Yes x <input type="checkbox"/> No <input type="checkbox"/> Not Applicable	
Comments: Had sierra put the fence back up 9/12/08		
Inspector Signature:		
Printed Name: Jeff Gordy		
Title: Lead Tech		
Date: 9/12/08 Phone: 486-3252		

Record Retention: Submit with Closure  
File: EH&S Well Files

Exploration & Production  
San Juan Basin Operations  
720 So. Main / PO Box 640  
Aztec, NM 87410  
505-634-4200 / 505-634-4205 fax



## Temporary Pit Inspection

### FACILITY INFORMATION

Facility Name: Rosa 166B	API #: 30-039-29841
--------------------------	---------------------

Pit Type: <input checked="" type="checkbox"/> Drilling <input type="checkbox"/> Workover <input type="checkbox"/> Cavitation	Inspection: <input type="checkbox"/> Daily (Rig) <input checked="" type="checkbox"/> Weekly (Tech)
--	--

Pit Liner intact (no visible tears)	<input checked="" type="checkbox"/> Yes <input type="checkbox"/> No If No, Report to EH&S immediately	Date / Time Reported: 10/1/08 1140
Pit Properly Fenced (no fence on rig side if on site)	<input checked="" type="checkbox"/> Yes <input type="checkbox"/> No <input type="checkbox"/> Not Required (if site fully fenced)	
Pit Slopes intact	<input checked="" type="checkbox"/> Yes <input type="checkbox"/> No	
Adequate freeboard (liquid level 2 <u>vertical</u> feet from berm top)	<input checked="" type="checkbox"/> Yes <input type="checkbox"/> No <input type="checkbox"/> Not Applicable	
Free oil or sheen present on pit	<input type="checkbox"/> Yes <input checked="" type="checkbox"/> No	
Flare Pit free of liquids	<input type="checkbox"/> Yes <input checked="" type="checkbox"/> No <input type="checkbox"/> Not Applicable	
Comments:		
Inspector Signature:		
Printed Name: Jeff Gordy		
Title: Lead Tech		
Date: 10/1/08 Phone: 486-3252		

Record Retention: Submit with Closure  
File: EH&S Well Files



Exploration & Production  
San Juan Basin Operations  
720 So. Main / PO Box 640  
Aztec, NM 87410  
505-634-4200 / 505-634-4205 fax



## Temporary Pit Inspection

### FACILITY INFORMATION

Facility Name: Rosa 166B	API #: 30-039-29841
--------------------------	---------------------

Pit Type: x <input type="checkbox"/> Drilling <input type="checkbox"/> Workover <input type="checkbox"/> Cavitation	Inspection: <input type="checkbox"/> Daily (Rig) x <input type="checkbox"/> Weekly (Tech)
---	---

Pit Liner intact (no visible tears)	<input type="checkbox"/> Yes X <input type="checkbox"/> No If No, Report to EH&S immediately	Date / Time Reported: 10/1/08 1140
Pit Properly Fenced (no fence on rig side if on site)	X <input type="checkbox"/> Yes <input type="checkbox"/> No <input type="checkbox"/> Not Required (if site fully fenced)	
Pit Slopes intact	X <input type="checkbox"/> Yes <input type="checkbox"/> No	
Adequate freeboard (liquid level 2 <u>vertical</u> feet from berm top)	x <input type="checkbox"/> Yes <input type="checkbox"/> No <input type="checkbox"/> Not Applicable	
Free oil or sheen present on pit	<input type="checkbox"/> Yes x <input type="checkbox"/> No	
Flare Pit free of liquids	<input type="checkbox"/> Yes x <input type="checkbox"/> No <input type="checkbox"/> Not Applicable	
Comments:  2' Tear on East side of pit. 4' above fluid level.		
Inspector Signature: Ryan Hutchens		
Printed Name: Ryan Hutchens		
Title: Tech 1		
Date: 11/3/08 Phone: 947-4686		

Record Retention: Submit with Closure  
File: EH&S Well Files

Exploration & Production  
San Juan Basin Operations  
720 So. Main / PO Box 640  
Aztec, NM 87410  
505-634-4200 / 505-634-4205 fax



## Temporary Pit Inspection

### FACILITY INFORMATION

Facility Name: Rosa 166B	API #: 30-039-29841
--------------------------	---------------------

Pit Type: <input checked="" type="checkbox"/> Drilling <input type="checkbox"/> Workover <input type="checkbox"/> Cavitation	Inspection: <input type="checkbox"/> Daily (Rig) <input checked="" type="checkbox"/> Weekly (Tech)
---	--

Pit Liner intact (no visible tears)	<input type="checkbox"/> Yes <input checked="" type="checkbox"/> No If No, Report to EH&S immediately	Date / Time Reported: 10/1/08 1140
Pit Properly Fenced (no fence on rig side if on site)	<input checked="" type="checkbox"/> Yes <input type="checkbox"/> No <input type="checkbox"/> Not Required (if site fully fenced)	
Pit Slopes intact	<input checked="" type="checkbox"/> Yes <input type="checkbox"/> No	
Adequate freeboard (liquid level 2 <u>vertical</u> feet from berm top)	<input checked="" type="checkbox"/> Yes <input type="checkbox"/> No <input type="checkbox"/> Not Applicable	
Free oil or sheen present on pit	<input type="checkbox"/> Yes <input checked="" type="checkbox"/> No	
Flare Pit free of liquids	<input type="checkbox"/> Yes <input checked="" type="checkbox"/> No <input type="checkbox"/> Not Applicable	
Comments:  2' Tear on East side of pit. 4' above fluid level.		
Inspector Signature: Ryan Hutchens		
Printed Name: Ryan Hutchens		
Title: Tech 1		
Date: 11/11/08 Phone: 947-4686		

Record Retention: Submit with Closure  
File: EH&S Well Files

Exploration & Production  
San Juan Basin Operations  
720 So. Main / PO Box 640  
Aztec, NM 87410  
505-634-4200 / 505-634-4205 fax



## Temporary Pit Inspection

### FACILITY INFORMATION

<b>Facility Name:</b> Rosa 166B	<b>API #:</b> 30-039-29841
---------------------------------	----------------------------

<b>Pit Type:</b> x <input type="checkbox"/> Drilling <input type="checkbox"/> Workover <input type="checkbox"/> Cavitation	<b>Inspection:</b> <input type="checkbox"/> Daily (Rig) x <input type="checkbox"/> Weekly (Tech)
---	--

Pit Liner intact (no visible tears)	<input type="checkbox"/> Yes X <input type="checkbox"/> No If No, Report to EH&S immediately	Date / Time Reported: 10/1/08 1140
Pit Properly Fenced (no fence on rig side if on site)	X <input type="checkbox"/> Yes <input type="checkbox"/> No <input type="checkbox"/> Not Required (if site fully fenced)	
Pit Slopes intact	X <input type="checkbox"/> Yes <input type="checkbox"/> No	
Adequate freeboard (liquid level 2 <u>vertical</u> feet from berm top)	x <input type="checkbox"/> Yes <input type="checkbox"/> No <input type="checkbox"/> Not Applicable	
Free oil or sheen present on pit	<input type="checkbox"/> Yes x <input type="checkbox"/> No	
Flare Pit free of liquids	<input type="checkbox"/> Yes x <input type="checkbox"/> No <input type="checkbox"/> Not Applicable	
Comments:  2' Tear on East side of pit. 4' above fluid level.		
Inspector Signature: Ryan Hutchens		
Printed Name: Ryan Hutchens		
Title: Tech 1		
Date: 11/21/08 Phone: 947-4686		

Record Retention: Submit with Closure  
File: EH&S Well Files

Exploration & Production  
San Juan Basin Operations  
720 So. Main / PO Box 640  
Aztec, NM 87410  
505-634-4200 / 505-634-4205 fax



## Temporary Pit Inspection

### FACILITY INFORMATION

<b>Facility Name:</b> Rosa 166B	<b>API #:</b>
---------------------------------	---------------

<b>Pit Type:</b> x <input type="checkbox"/> Drilling <input type="checkbox"/> Workover <input type="checkbox"/> Cavitation	<b>Inspection:</b> <input type="checkbox"/> Daily (Rig) x <input type="checkbox"/> Weekly (Tech)
--	--

Pit Liner intact (no visible tears)	x <input type="checkbox"/> Yes <input type="checkbox"/> No If No, Report to EH&S immediately	Date / Time Reported to EH&S:
Pit Properly Fenced (no fence on rig side if on site)	x <input type="checkbox"/> Yes <input type="checkbox"/> No <input type="checkbox"/> Not Required (if site fully fenced)	
Pit Slopes intact	x <input type="checkbox"/> Yes <input type="checkbox"/> No	
Adequate freeboard (liquid level 2 vertical feet from berm top)	x <input type="checkbox"/> Yes <input type="checkbox"/> No <input type="checkbox"/> Not Applicable	
Does pit have oil or sheen on it?	<input type="checkbox"/> Yes x <input type="checkbox"/> No	
Flare Pit free of liquids	x <input type="checkbox"/> Yes <input type="checkbox"/> No <input type="checkbox"/> Not Applicable	

<b>Comments:</b> Pit was pulled some water and snow exists		
Inspector Signature: Jason Smith		
Printed Name: Jason Smith		
Title: Tech.		
Date: 12-17-09		Phone: (505)330-7257

Record Retention: Submit with Closure  
File: EH&S Well Files

Exploration & Production  
San Juan Basin Operations  
720 So. Main / PO Box 640  
Aztec, NM 87410  
505-634-4200 / 505-634-4205 fax



## Temporary Pit Inspection

### FACILITY INFORMATION

<b>Facility Name:</b> Rosa 166B	<b>API #:</b>
---------------------------------	---------------

<b>Pit Type:</b> x <input type="checkbox"/> Drilling <input type="checkbox"/> Workover <input type="checkbox"/> Cavitation	<b>Inspection:</b> <input type="checkbox"/> Daily (Rig) x <input type="checkbox"/> Weekly (Tech)
--	--

Pit Liner intact (no visible tears)	x <input type="checkbox"/> Yes <input type="checkbox"/> No If No, Report to EH&S immediately	Date / Time Reported to EH&S:
Pit Properly Fenced (no fence on rig side if on site)	x <input type="checkbox"/> Yes <input type="checkbox"/> No <input type="checkbox"/> Not Required (if site fully fenced)	
Pit Slopes intact	x <input type="checkbox"/> Yes <input type="checkbox"/> No	
Adequate freeboard (liquid level 2 <u>vertical</u> feet from berm top)	x <input type="checkbox"/> Yes <input type="checkbox"/> No <input type="checkbox"/> Not Applicable	
Does pit have oil or sheen on it?	<input type="checkbox"/> Yes x <input type="checkbox"/> No	
Flare Pit free of liquids	x <input type="checkbox"/> Yes <input type="checkbox"/> No <input type="checkbox"/> Not Applicable	
Comments: Pit was pulled some water and snow exists		
Inspector Signature: Jason Smith		
Printed Name: Jason Smith		
Title: Tech.		
Date: 12-29-09 Phone: (505)330-7257		

Record Retention: Submit with Closure  
File: EH&S Well Files

Exploration & Production  
San Juan Basin Operations  
720 So. Main / PO Box 640  
Aztec, NM 87410  
505-634-4200 / 505-634-4205 fax



## Temporary Pit Inspection

### FACILITY INFORMATION

<b>Facility Name:</b> Rosa #166B		<b>API #:</b> 30-039-29841	
<b>Pit Type:</b> <input checked="" type="checkbox"/> Drilling <input type="checkbox"/> Workover <input type="checkbox"/> Cavitation		<b>Inspection:</b> <input type="checkbox"/> Daily (Rig) <input checked="" type="checkbox"/> Weekly (Tech)	
Pit Liner intact (no visible tears)	<input checked="" type="checkbox"/> Yes <input type="checkbox"/> No If No, Report to EH&S immediately	Date / Time Reported to EH&S:	
Pit Properly Fenced (no fence on rig side if on site)	<input checked="" type="checkbox"/> Yes <input type="checkbox"/> No <input type="checkbox"/> Not Required (if site fully fenced)		
Pit Slopes intact	<input checked="" type="checkbox"/> Yes <input type="checkbox"/> No		
Adequate freeboard (liquid level 2 <u>vertical</u> feet from berm top)	<input checked="" type="checkbox"/> Yes <input type="checkbox"/> No <input type="checkbox"/> Not Applicable		
Does pit have oil or sheen on it?	<input type="checkbox"/> Yes <input checked="" type="checkbox"/> No		
Flare Pit free of liquids	<input checked="" type="checkbox"/> Yes <input type="checkbox"/> No <input type="checkbox"/> Not Applicable		
Comments:			
Inspector Signature:			
Printed Name: Levi Thorson			
Title: Field Technician			
Date: 4/8/09		Phone: (505)330-6034	

Record Retention: Submit with Closure  
File: EH&S Well Files

Exploration & Production  
San Juan Basin Operations  
720 So. Main / PO Box 640  
Aztec, NM 87410  
505-634-4200 / 505-634-4205 fax



## Temporary Pit Inspection

### FACILITY INFORMATION

<b>Facility Name:</b> Rosa 166B	<b>API #:</b>
---------------------------------	---------------

<b>Pit Type:</b> <input checked="" type="checkbox"/> Drilling <input type="checkbox"/> Workover <input type="checkbox"/> Cavitation	<b>Inspection:</b> <input type="checkbox"/> Daily (Rig) <input checked="" type="checkbox"/> Weekly (Tech)
---	---

Pit Liner intact (no visible tears)	<input checked="" type="checkbox"/> Yes <input type="checkbox"/> No If No, Report to EH&S immediately	Date / Time Reported to EH&S:
Pit Properly Fenced (no fence on rig side if on site)	<input checked="" type="checkbox"/> Yes <input type="checkbox"/> No <input type="checkbox"/> Not Required (if site fully fenced)	
Pit Slopes intact	<input checked="" type="checkbox"/> Yes <input type="checkbox"/> No	
Adequate freeboard (liquid level 2 <u>vertical</u> feet from berm top)	<input checked="" type="checkbox"/> Yes <input type="checkbox"/> No <input type="checkbox"/> Not Applicable	
Does pit have oil or sheen on it?	<input type="checkbox"/> Yes <input checked="" type="checkbox"/> No	
Flare Pit free of liquids	<input checked="" type="checkbox"/> Yes <input type="checkbox"/> No <input type="checkbox"/> Not Applicable	
Comments: Water pulled out of pit about 10" of snow exists		
Inspector Signature: Jason Smith		
Printed Name: Jason Smith		
Title: Tech.		
Date: 12-10-09 Phone: (505)330-7257		

Record Retention: Submit with Closure  
File: EH&S Well Files

Exploration & Production  
San Juan Basin Operations  
720 So. Main / PO Box 640  
Aztec, NM 87410  
505-634-4200 / 505-634-4205 fax



## Temporary Pit Inspection

### FACILITY INFORMATION

<b>Facility Name:</b> Rosa 166B	<b>API #:</b>
---------------------------------	---------------

<b>Pit Type:</b> x <input type="checkbox"/> Drilling <input type="checkbox"/> Workover <input type="checkbox"/> Cavitation	<b>Inspection:</b> <input type="checkbox"/> Daily (Rig) x <input type="checkbox"/> Weekly (Tech)
--	--

Pit Liner intact (no visible tears)	x <input type="checkbox"/> Yes <input type="checkbox"/> No If No, Report to EH&S immediately	Date / Time Reported to EH&S:
Pit Properly Fenced (no fence on rig side if on site)	x <input type="checkbox"/> Yes <input type="checkbox"/> No <input type="checkbox"/> Not Required (if site fully fenced)	
Pit Slopes intact	x <input type="checkbox"/> Yes <input type="checkbox"/> No	
Adequate freeboard (liquid level 2 <u>vertical</u> feet from berm top)	x <input type="checkbox"/> Yes <input type="checkbox"/> No <input type="checkbox"/> Not Applicable	
Does pit have oil or sheen on it?	<input type="checkbox"/> Yes x <input type="checkbox"/> No	
Flare Pit free of liquids	x <input type="checkbox"/> Yes <input type="checkbox"/> No <input type="checkbox"/> Not Applicable	
Comments: Water pulled out of pit		
Inspector Signature: Jason Smith		
Printed Name: Jason Smith		
Title: Tech.		
Date: 11-30-09		Phone: (505)330-7257

Record Retention: Submit with Closure  
File: EH&S Well Files



Exploration & Production  
San Juan Basin Operations  
720 So. Main / PO Box 640  
Aztec, NM 87410  
505-634-4200 / 505-634-4205 fax



## Temporary Pit Inspection

### FACILITY INFORMATION

<b>Facility Name:</b> Rosa 166B	<b>API #:</b>
---------------------------------	---------------

<b>Pit Type:</b> <input checked="" type="checkbox"/> Drilling <input type="checkbox"/> Workover <input type="checkbox"/> Cavitation	<b>Inspection:</b> <input type="checkbox"/> Daily (Rig) <input checked="" type="checkbox"/> Weekly (Tech)
---	---

Pit Liner intact (no visible tears)	<input checked="" type="checkbox"/> Yes <input type="checkbox"/> No If No, Report to EH&S immediately	Date / Time Reported to EH&S:
Pit Properly Fenced (no fence on rig side if on site)	<input checked="" type="checkbox"/> Yes <input type="checkbox"/> No <input type="checkbox"/> Not Required (if site fully fenced)	
Pit Slopes intact	<input checked="" type="checkbox"/> Yes <input type="checkbox"/> No	
Adequate freeboard (liquid level 2 <u>vertical</u> feet from berm top)	<input checked="" type="checkbox"/> Yes <input type="checkbox"/> No <input type="checkbox"/> Not Applicable	
Does pit have oil or sheen on it?	<input type="checkbox"/> Yes <input checked="" type="checkbox"/> No	
Flare Pit free of liquids	<input checked="" type="checkbox"/> Yes <input type="checkbox"/> No <input type="checkbox"/> Not Applicable	
Comments: Ware pulled out of pit		
Inspector Signature: Jason Smith		
Printed Name: Jason Smith		
Title: Tech.		
Date: 11-25-09 Phone: (505)330-7257		

Record Retention: Submit with Closure  
File: EH&S Well Files



07-22-2010





Exploration & Production  
PO Box 640  
Aztec, NM 87410  
505/634-4219  
505/634-4205 fax



## Transmittal

**To:** Brandon Powell  
NMOCD  
1000 Rio Brazos Road  
Aztec, New Mexico 87410

**From:** Tasha Meador  
San Juan- Permitting Technician  
505-634-4241  
tasha.meador@williams.com

**Date:**

**Re:** Supplemental Submittal

Temporary Pit Closure report: NMOCD Permit # 6841

Enclosed and per your direction, please find our supplemental submittal for the referenced temporary pit closure report.

Please advise if additional information is required. Thank you for your time and consideration. Please call or contact me if there are any questions.

Respectfully resubmitted,

Tasha Meador  
Williams Exploration & Production  
721 S Main Aztec, NM  
Office: 505-634-4200  
Direct: 505-634-4241  
Fax: 505-634-4205  
[tasha.meador@williams.com](mailto:tasha.meador@williams.com)

Encl:

District I  
PO Box 1980, Hobbs, NM 88241-1980

District II  
PO Drawer DD, Artesia, NM 88211-0719

District III  
1000 Rio Brazos Rd., Aztec, NM 87410

District IV  
PO Box 2088, Santa Fe, NM 87504-2088

State of New Mexico  
Energy, Minerals & Natural Resources Department

OIL CONSERVATION DIVISION  
PO Box 2088  
Santa Fe, NM 87504-2088

Form C-102  
Revised February 21, 1994  
Instructions on back  
Submit to Appropriate District Office  
State Lease - 4 Copies  
Fee Lease - 3 Copies

☐ AMENDED REPORT

WELL LOCATION AND ACREAGE DEDICATION PLAT

API Number 30-039-29841		Pool Code 72319	Pool Name BLANCO MESAVERDE
Property Code 17033	Property Name ROSA UNIT		Well Number 166B
GRID No. 120782	Operator Name WILLIAMS PRODUCTION COMPANY		Elevation 6385'

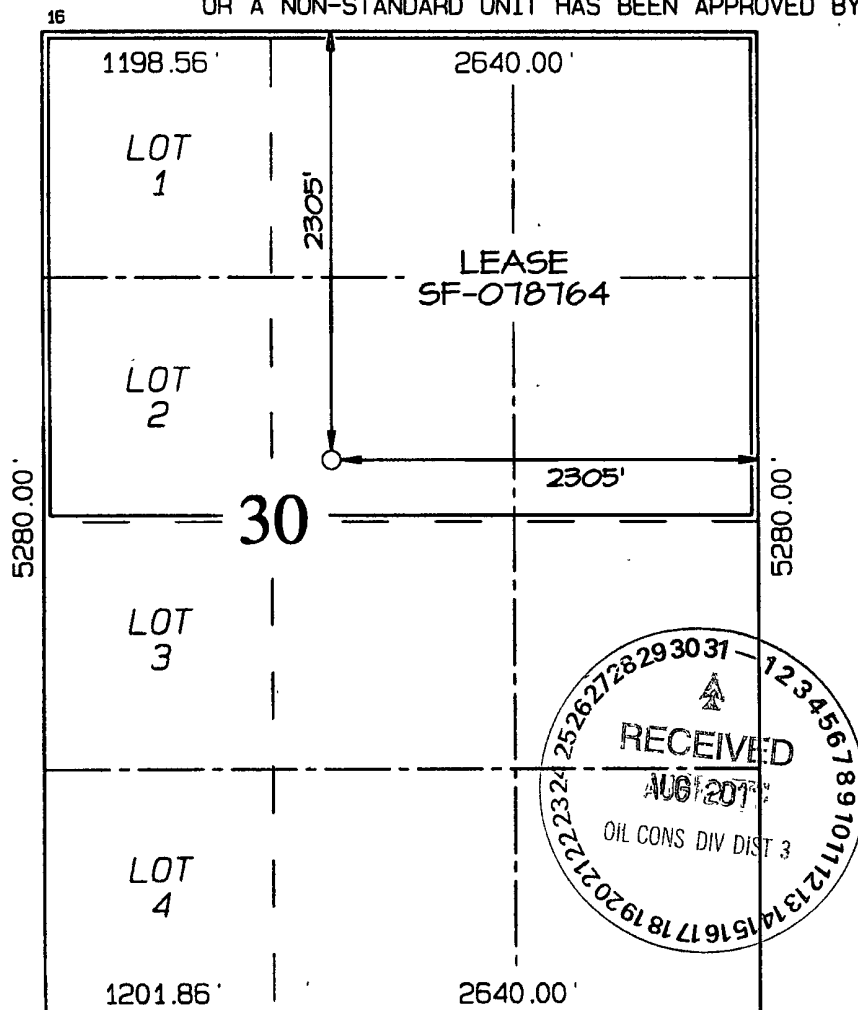
<sup>10</sup> Surface Location

UL or lot no.	Section	Township	Range	Lot Idh	Feet from the	North/South line	Feet from the	East/West line	County
G	30	31N	5W		2305	NORTH	2305	EAST	RIO ARriba

<sup>11</sup> Bottom Hole Location If Different From Surface

UL or lot no.	Section	Township	Range	Lot Idh	Feet from the	North/South line	Feet from the	East/West line	County
<sup>12</sup> Dedicated Acres 232.69 Acres - (N/2)					<sup>13</sup> Joint or Infill	<sup>14</sup> Consolidation Code	<sup>15</sup> Order No.		

NO ALLOWABLE WILL BE ASSIGNED TO THIS COMPLETION UNTIL ALL INTERESTS HAVE BEEN CONSOLIDATED  
OR A NON-STANDARD UNIT HAS BEEN APPROVED BY THE DIVISION



<sup>17</sup> OPERATOR CERTIFICATION

I hereby certify that the information contained herein is true and complete to the best of my knowledge and belief

Tasha Meador  
Signature  
Tasha Meador  
Printed Name  
Permit Tech  
Title  
8/31/11  
Date

<sup>18</sup> SURVEYOR CERTIFICATION

I hereby certify that the well location shown on this plat was plotted from field notes of actual surveys made by me or under my supervision, and that the same is true and correct to the best of my belief.

Survey Date: OCTOBER 4, 2005

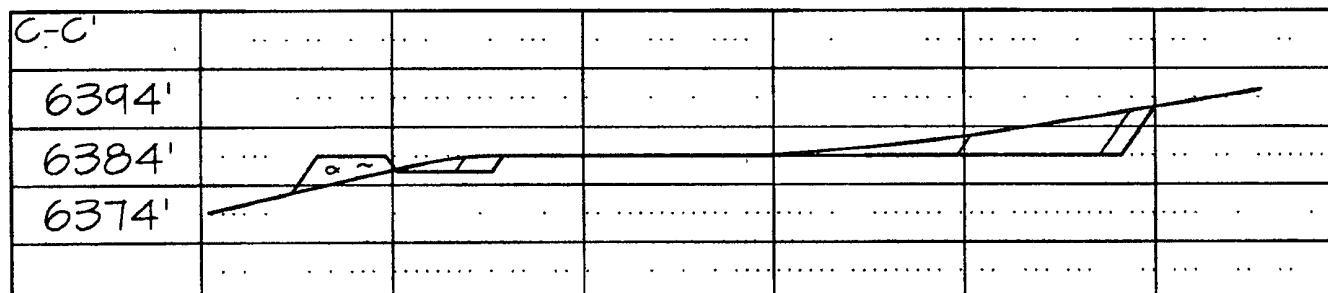
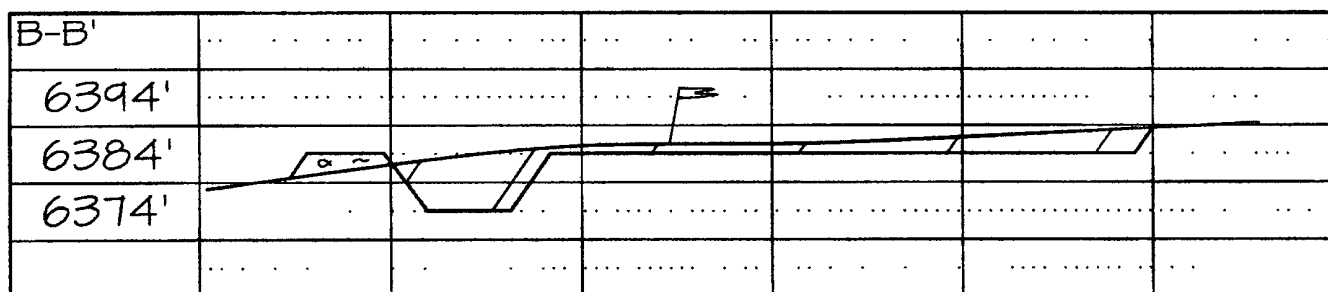
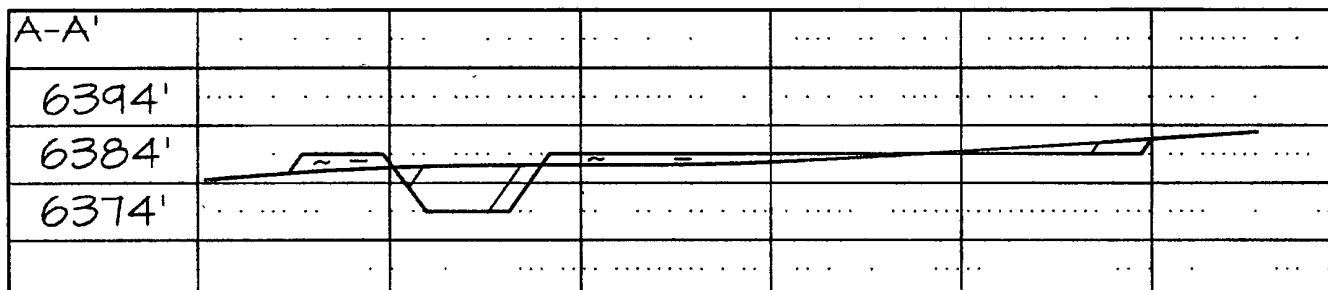
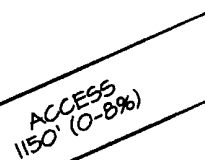
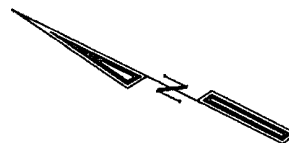
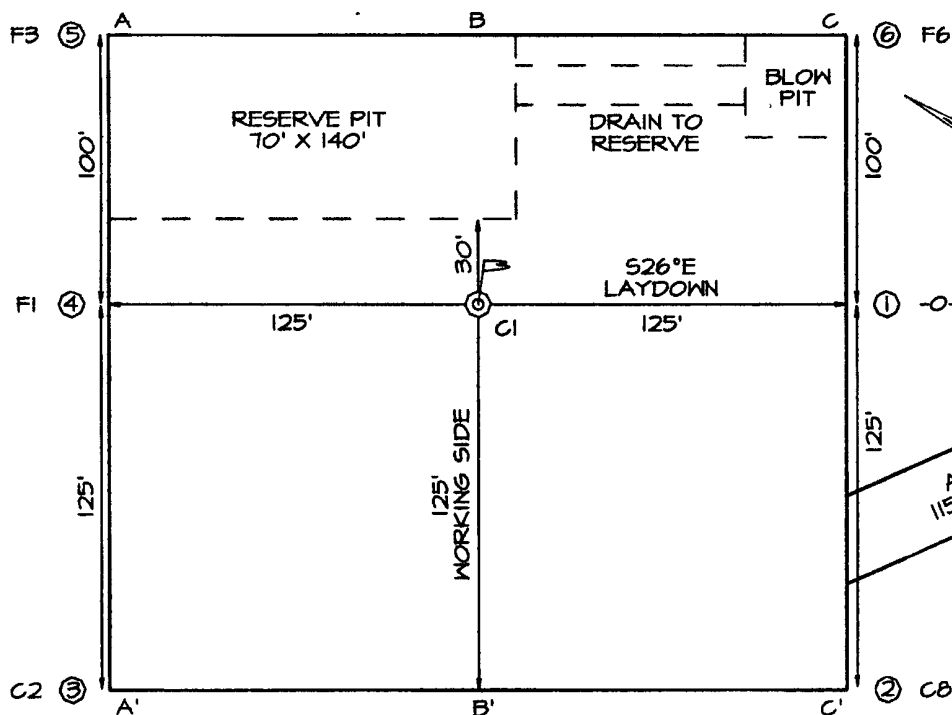
Signature and Seal of Professional Surveyor



JASON C. EDWARDS  
Certificate Number 15269

**LATITUDE: 36°52'17"**  
**LONGITUDE: 107°24'07"**

DATUM: NAD1927



Submit To Appropriate District Office Two Copies District I 1625 N French Dr., Hobbs NM 88240 District II 1301 W Grand Avenue, Artesia, NM 88210 District III 1000 Rio Brazos Rd Aztec NM 87410 District IV 1220 S St Francis Dr., Santa Fe NM 87505	<b>State of New Mexico</b> <b>Energy, Minerals and Natural Resources</b>  <b>Oil Conservation Division</b> <b>1220 South St. Francis Dr.</b> <b>Santa Fe, NM 87505</b>	<b>Form C-105</b> July 17, 2008  1. WELL API NO. 30-039-29841 2. Type of Lease <input type="checkbox"/> STATE <input type="checkbox"/> FEE <input checked="" type="checkbox"/> FED/INDIAN 3. State Oil & Gas Lease No SF-078764
---	---	--

WELL COMPLETION OR RECOMPLETION REPORT AND LOG											
4 Reason for filing  <input type="checkbox"/> <b>COMPLETION REPORT</b> (Fill in boxes #1 through #31 for State and Fee wells only)  <input checked="" type="checkbox"/> <b>C-144 CLOSURE ATTACHMENT</b> (Fill in boxes #1 through #9, #15 Date Rig Released and #32 and/or #33, attach this and the plat to the C-144 closure report in accordance with 19 15 17 13 K NMAC)						5 Lease Name or Unit Agreement Name Rosa 6 Well Number Rosa Unit #166B					
7 Type of Completion <input checked="" type="checkbox"/> NEW WELL <input type="checkbox"/> WORKOVER <input type="checkbox"/> DEEPENING <input type="checkbox"/> PLUGBACK <input type="checkbox"/> DIFFERENT RESERVOIR <input type="checkbox"/> OTHER											
8 Name of Operator    WILLIAMS PRODUCTION, LLC						9 OGRID    120782					
10 Address of Operator    P O BOX 640    AZTEC, NM 87410						11 Pool name or Wildcat					
12 Location	Unit Ltr	Section	Township	Range	Lot	Feet from the	N/S Line	Feet from the	E/W Line	County	
Surface:											
BH:											
13 Date Spudded	14 Date T D Reached	15 Date Rig Released 5/23/2010		16 Date Completed (Ready to Produce)			17 Elevations (DF and RKB, RT, GR, etc )				
18 Total Measured Depth of Well		19 Plug Back Measured Depth		20 Was Directional Survey Made?			21 Type Electric and Other Logs Run				
22 Producing Interval(s), of this completion - Top, Bottom, Name											

23 CASING RECORD (Report all strings set in well)					
CASING SIZE	WEIGHT LB /FT	DEPTH SET	HOLE SIZE	CEMENTING RECORD	AMOUNT PULLED

24 LINER RECORD					25 TUBING RECORD		
SIZE	TOP	BOTTOM	SACKS CEMENT	SCREEN	SIZE	DEPTH SET	PACKER SET

26 Perforation record (interval, size, and number)	27 ACID, SHOT, FRACTURE, CEMENT, SQUEEZE, ETC	
	DEPTH INTERVAL	AMOUNT AND KIND MATERIAL USED

28 PRODUCTION							
Date First Production		Production Method (Flowing, gas lift, pumping - Size and type pump)				Well Status (Prod or Shut-in)	
Date of Test	Hours Tested	Choke Size	Prod'n For Test Period	Oil - Bbl	Gas - MCF	Water - Bbl	Gas - Oil Ratio
Flow Tubing Press	Casing Pressure	Calculated 24-Hour Rate	Oil - Bbl	Gas - MCF	Water - Bbl	Oil Gravity - API - (Corr )	
29 Disposition of Gas (Sold used for fuel vented etc )						30 Test Witnessed By	
31 List Attachments							
32 If a temporary pit was used at the well, attach a plat with the location of the temporary pit							
33 If an on-site burial was used at the well, report the exact location of the on-site burial							

Latitude 36 91892    Longitude 107 38352    NAD 1927 1983

*I hereby certify that the information shown on both sides of this form is true and complete to the best of my knowledge and belief*

Signature	Printed Name    Tasha Meador    Title    Permit Technician    Date    8/31/11
-----------	---

E-mail Address: tasha meador@williams.com