

District I
1625 N French Dr., Hobbs, NM 88240
District II
1301 W Grand Ave., Artesia, NM 88210
District III
1000 Rio Brazos Rd., Aztec, NM 87410
District IV
1220 S St Francis Dr., Santa Fe, NM 87505

State of New Mexico
Energy Minerals and Natural Resources
Department
Oil Conservation Division
1220 South St. Francis Dr.
Santa Fe, NM 87505

Form C-144
July 21, 2008

For temporary pits, closed-loop systems, and below-grade tanks, submit to the appropriate NMOCD District Office

For permanent pits and exceptions submit to the Santa Fe Environmental Bureau office and provide a copy to the appropriate NMOCD District Office

49260
**Pit, Closed-Loop System, Below-Grade Tank, or
Proposed Alternative Method Permit or Closure Plan Application**

- Type of action: ☐ Permit of a pit, closed-loop system, below-grade tank, or proposed alternative method
☒ Closure of a pit, closed-loop system, below-grade tank, or proposed alternative method
☐ Modification to an existing permit
☐ Closure plan only submitted for an existing permitted or non-permitted pit, closed-loop system, below-grade tank, or proposed alternative method

Instructions: Please submit one application (Form C-144) per individual pit, closed-loop system, below-grade tank or alternative

Please be advised that approval of this request does not relieve the operator of liability should operations result in pollution of surface water, ground water or the environment. Nor does approval relieve the operator of its responsibility to comply with any other applicable governmental authority's rules, regulations or ordinances.

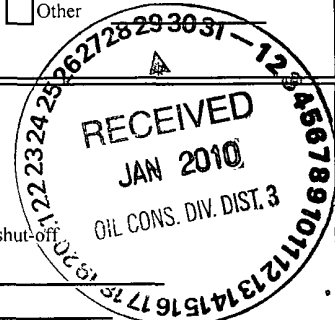
1
Operator: Burlington Resources Oil & Gas Company, LP OGRID#: 14538
Address: P.O. Box 4289, Farmington, NM 87499
Facility or well name: HUERFANO UNIT 282E
API Number: 30-045-33911 OCD Permit Number _____
U/L or Qtr/Qtr: I(NE/SE) Section: 31 Township: 27N Range: 10W County: San Juan
Center of Proposed Design: Latitude: 36.52648 °N Longitude: 107.93149 °W NAD: ☐ 1927 ☒ 1983
Surface Owner: ☒ Federal ☐ State ☐ Private ☐ Tribal Trust or Indian Allotment

2
☒ **Pit:** Subsection F or G of 19 15 17 11 NMAC
Temporary ☒ Drilling ☐ Workover
☐ Permanent ☐ Emergency ☐ Cavitation ☐ P&A
☒ Lined ☐ Unlined Liner type _____ Thickness 12 mil ☒ LLDPE ☐ HDPE ☐ PVC ☐ Other _____
☒ String-Reinforced
Liner Seams ☒ Welded ☒ Factory ☐ Other _____ Volume 4400 bbl Dimensions L 65' x W 45' x D 10'

3
☐ **Closed-loop System:** Subsection H of 19 15 17 11 NMAC
Type of Operation ☐ P&A ☐ Drilling a new well ☐ Workover or Drilling (Applies to activities which require prior approval of a permit or notice of intent)
☐ Drying Pad ☐ Above Ground Steel Tanks ☐ Haul-off Bins ☐ Other _____
☐ Lined ☐ Unlined Liner type _____ Thickness _____ mil ☐ LLDPE ☐ HDPE ☐ PVD ☐ Other _____
Liner Seams ☐ Welded ☐ Factory ☐ Other _____

4
☐ **Below-grade tank:** Subsection I of 19.15.17 11 NMAC
Volume _____ bbl Type of fluid _____
Tank Construction material _____
☐ Secondary containment with leak detection ☐ Visible sidewalls, liner, 6-inch lift and automatic overflow shut-off
☐ Visible sidewalls and liner ☐ Visible sidewalls only ☐ Other _____
Liner Type _____ Thickness _____ mil ☐ HDPE ☐ PVC ☐ Other _____

5
☐ **Alternative Method:**
Submittal of an exception request is required. Exceptions must be submitted to the Santa Fe Environmental Bureau office for consideration of approval.



32

Fencing: Subsection D of 19.15.17.11 NMAC (*Applies to permanent pit, temporary pits, and below-grade tanks*)

- ☐ Chain link, six feet in height, two strands of barbed wire at top (*Required if located within 1000 feet of a permanent residence, school, hospital, institution or church*)
- ☐ Four foot height, four strands of barbed wire evenly spaced between one and four feet
- ☐ Alternate Please specify _____

7

Netting: Subsection E of 19.15.17.11 NMAC (*Applies to permanent pits and permanent open top tanks*)

- ☐ Screen ☐ Netting ☐ Other _____
- ☐ Monthly inspections (*If netting or screening is not physically feasible*)

8

Signs: Subsection C of 19.15.17.11 NMAC

- ☐ 12" X 24", 2" lettering, providing Operator's name, site location, and emergency telephone numbers
- ☒ Signed in compliance with 19.15.3.103 NMAC

9

Administrative Approvals and Exceptions:

Justifications and/or demonstrations of equivalency are required Please refer to 19.15.17 NMAC for guidance

Please check a box if one or more of the following is requested, if not leave blank:

- ☐ Administrative approval(s) Requests must be submitted to the appropriate division district of the Santa Fe Environmental Bureau office for consideration of approval (**Fencing/BGT Liner**)
- ☐ Exception(s): Requests must be submitted to the Santa Fe Environmental Bureau office for consideration of approval

10

Siting Criteria (regarding permitting): 19.15.17.10 NMAC

Instructions: The applicant must demonstrate compliance for each siting criteria below in the application. Recommendations of acceptable source material are provided below. Requests regarding changes to certain siting criteria may require administrative approval from the appropriate district office or may be considered an exception which must be submitted to the Santa Fe Environmental Bureau Office for consideration of approval. Applicant must attach justification for request. Please refer to 19.15.17.10 NMAC for guidance. Siting criteria does not apply to drying pads or above grade-tanks associated with a closed-loop system.

Ground water is less than 50 feet below the bottom of the temporary pit, permanent pit, or below-grade tank.

- NM Office of the State Engineer - iWATERS database search, USGS; Data obtained from nearby wells

☐ Yes ☐ No

Within 300 feet of a continuously flowing watercourse, or 200 feet of any other watercourse, lakebed, sinkhole, or playa lake (measured from the ordinary high-water mark).

- Topographic map, Visual inspection (certification) of the proposed site

☐ Yes ☐ No

Within 300 feet from a permanent residence, school, hospital, institution, or church in existence at the time of initial application.

☐ Yes ☐ No

(Applies to temporary, emergency, or cavitation pits and below-grade tanks)

- Visual inspection (certification) of the proposed site; Aerial photo, Satellite image

☐ NA

Within 1000 feet from a permanent residence, school, hospital, institution, or church in existence at the time of initial application.

☐ Yes ☐ No

(Applied to permanent pits)

- Visual inspection (certification) of the proposed site; Aerial photo, Satellite image

☐ NA

Within 500 horizontal feet of a private, domestic fresh water well or spring that less than five households use for domestic or stock watering purposes, or within 1000 horizontal feet of any other fresh water well or spring, in existence at the time of initial application.

☐ Yes ☐ No

- NM Office of the State Engineer - iWATERS database search; Visual inspection (certification) of the proposed site

Within incorporated municipal boundaries or within a defined municipal fresh water well field covered under a municipal ordinance adopted pursuant to NMSA 1978, Section 3-27-3, as amended

- Written confirmation or verification from the municipality, Written approval obtained from the municipality

☐ Yes ☐ No

Within 500 feet of a wetland.

- US Fish and Wildlife Wetland Identification map; Topographic map, Visual inspection (certification) of the proposed site

☐ Yes ☐ No

Within the area overlying a subsurface mine.

- Written confirmation or verification or map from the NM EMNRD - Mining and Mineral Division

☐ Yes ☐ No

Within an unstable area.

- Engineering measures incorporated into the design; NM Bureau of Geology & Mineral Resources, USGS, NM Geological Society; Topographic map

☐ Yes ☐ No

Within a 100-year floodplain

- FEMA map

☐ Yes ☐ No

11

Temporary Pits, Emergency Pits and Below-grade Tanks Permit Application Attachment Checklist: Subsection B of 19.15.17.9 NMAC*Instructions: Each of the following items must be attached to the application. Please indicate, by a check mark in the box, that the documents are attached.*

- ☐ Hydrogeologic Report (Below-grade Tanks) - based upon the requirements of Paragraph (4) of Subsection B of 19.15.17.9 NMAC
- ☐ Hydrogeologic Data (Temporary and Emergency Pits) - based upon the requirements of Paragraph (2) of Subsection B of 19.15.17.9 NMAC
- ☐ Siting Criteria Compliance Demonstrations - based upon the appropriate requirements of 19.15.17.10 NMAC
- ☐ Design Plan - based upon the appropriate requirements of 19.15.17.11 NMAC
- ☐ Operating and Maintenance Plan - based upon the appropriate requirements of 19.15.17.12 NMAC
- ☐ Closure Plan (Please complete Boxes 14 through 18, if applicable) - based upon the appropriate requirements of Subsection C of 19.15.17.9 NMAC and 19.15.17.13 NMAC

☐ Previously Approved Design (attach copy of design) API _____ or Permit Number _____

12.

Closed-loop Systems Permit Application Attachment Checklist: Subsection B of 19.15.17.9 NMAC*Instructions: Each of the following items must be attached to the application. Please indicate, by a check mark in the box, that the documents are attached.*

- ☐ Geologic and Hydrogeologic Data (only for on-site closure) - based upon the requirements of Paragraph (3) of Subsection B of 19.15.17.9 NMAC
- ☐ Siting Criteria Compliance Demonstrations (only for on-site closure) - based upon the appropriate requirements of 19.15.17.10 NMAC
- ☐ Design Plan - based upon the appropriate requirements of 19.15.17.11 NMAC
- ☐ Operating and Maintenance Plan - based upon the appropriate requirements of 19.15.17.12 NMAC
- ☐ Closure Plan (Please complete Boxes 14 through 18, if applicable) - based upon the appropriate requirements of Subsection C of 19.15.17.9 NMAC and 19.15.17.13 NMAC

☐ Previously Approved Design (attach copy of design) API _____

☐ Previously Approved Operating and Maintenance Plan API _____

13

Permanent Pits Permit Application Checklist: Subsection B of 19.15.17.9 NMAC*Instructions: Each of the following items must be attached to the application. Please indicate, by a check mark in the box, that the documents are attached.*

- ☐ Hydrogeologic Report - based upon the requirements of Paragraph (1) of Subsection B of 19.15.17.9 NMAC
- ☐ Siting Criteria Compliance Demonstrations - based upon the appropriate requirements of 19.15.17.10 NMAC
- ☐ Climatological Factors Assessment
- ☐ Certified Engineering Design Plans - based upon the appropriate requirements of 19.15.17.11 NMAC
- ☐ Dike Protection and Structural Integrity Design - based upon the appropriate requirements of 19.15.17.11 NMAC
- ☐ Leak Detection Design - based upon the appropriate requirements of 19.15.17.11 NMAC
- ☐ Liner Specifications and Compatibility Assessment - based upon the appropriate requirements of 19.15.17.11 NMAC
- ☐ Quality Control/Quality Assurance Construction and Installation Plan
- ☐ Operating and Maintenance Plan - based upon the appropriate requirements of 19.15.17.12 NMAC
- ☐ Freeboard and Overtopping Prevention Plan - based upon the appropriate requirements of 19.15.17.11 NMAC
- ☐ Nuisance or Hazardous Odors, including H₂S, Prevention Plan
- ☐ Emergency Response Plan
- ☐ Oil Field Waste Stream Characterization
- ☐ Monitoring and Inspection Plan
- ☐ Erosion Control Plan
- ☐ Closure Plan - based upon the appropriate requirements of Subsection C of 19.15.17.9 NMAC and 19.15.17.13 NMAC

14

Proposed Closure: 19.15.17.13 NMAC*Instructions: Please complete the applicable boxes, Boxes 14 through 18, in regards to the proposed closure plan.*

Type ☐ Drilling ☐ Workover ☐ Emergency ☐ Cavitation ☐ P&A ☐ Permanent Pit ☐ Below-grade Tank ☐ Closed-loop System

☐ Alternative

Proposed Closure Method ☐ Waste Excavation and Removal

☐ Waste Removal (Closed-loop systems only)

☐ On-site Closure Method (only for temporary pits and closed-loop systems)

☐ In-place Burial ☐ On-site Trench Burial

☐ Alternative Closure Method (Exceptions must be submitted to the Santa Fe Environmental Bureau for consideration)

15

Waste Excavation and Removal Closure Plan Checklist: (19.15.17.13 NMAC) *Instructions: Each of the following items must be attached to the closure plan.**Please indicate, by a check mark in the box, that the documents are attached.*

- ☐ Protocols and Procedures - based upon the appropriate requirements of 19.15.17.13 NMAC
- ☐ Confirmation Sampling Plan (if applicable) - based upon the appropriate requirements of Subsection F of 19.15.17.13 NMAC
- ☐ Disposal Facility Name and Permit Number (for liquids, drilling fluids and drill cuttings)
- ☐ Soil Backfill and Cover Design Specifications - based upon the appropriate requirements of Subsection H of 19.15.17.13 NMAC
- ☐ Re-vegetation Plan - based upon the appropriate requirements of Subsection I of 19.15.17.13 NMAC
- ☐ Site Reclamation Plan - based upon the appropriate requirements of Subsection G of 19.15.17.13 NMAC

Waste Removal Closure For Closed-loop Systems That Utilize Above Ground Steel Tanks or Haul-off Bins Only: (19 15.17 13 D NMAC)

Instructions: Please identify the facility or facilities for the disposal of liquids, drilling fluids and drill cuttings. Use attachment if more than two facilities are required.

Disposal Facility Name _____ Disposal Facility Permit # _____

Disposal Facility Name _____ Disposal Facility Permit # _____

Will any of the proposed closed-loop system operations and associated activities occur on or in areas that *will not* be used for future service and operations?

☐ Yes (If yes, please provide the information) ☐ No

Required for impacted areas which will not be used for future service and operations

- ☐ Soil Backfill and Cover Design Specification - based upon the appropriate requirements of Subsection H of 19 15 17 13 NMAC
☐ Re-vegetation Plan - based upon the appropriate requirements of Subsection I of 19.15.17.13 NMAC
☐ Site Reclamation Plan - based upon the appropriate requirements of Subsection G of 19 15 17 13 NMAC

Siting Criteria (Regarding on-site closure methods only): 19 15 17 10 NMAC

Instructions: Each siting criteria requires a demonstration of compliance in the closure plan. Recommendations of acceptable source material are provided below. Requests regarding changes to certain siting criteria may require administrative approval from the appropriate district office or may be considered an exception which must be submitted to the Santa Fe Environmental Bureau office for consideration of approval. Justifications and/or demonstrations of equivalency are required. Please refer to 19 15 17 10 NMAC for guidance.

Ground water is less than 50 feet below the bottom of the buried waste

- NM Office of the State Engineer - iWATERS database search, USGS, Data obtained from nearby wells

☐ Yes ☐ No

☐ N/A

Ground water is between 50 and 100 feet below the bottom of the buried waste

- NM Office of the State Engineer - iWATERS database search; USGS, Data obtained from nearby wells

☐ Yes ☐ No

☐ N/A

Ground water is more than 100 feet below the bottom of the buried waste

- NM Office of the State Engineer - iWATERS database search, USGS, Data obtained from nearby wells

☐ Yes ☐ No

☐ N/A

Within 300 feet of a continuously flowing watercourse, or 200 feet of any other significant watercourse or lakebed, sinkhole, or playa lake (measured from the ordinary high-water mark)

- Topographic map, Visual inspection (certification) of the proposed site

☐ Yes ☐ No

Within 300 feet from a permanent residence, school, hospital, institution, or church in existence at the time of initial application

- Visual inspection (certification) of the proposed site, Aerial photo, satellite image

☐ Yes ☐ No

☐ Yes ☐ No

Within 500 horizontal feet of a private, domestic fresh water well or spring that less than five households use for domestic or stock watering purposes, or within 1000 horizontal feet of any other fresh water well or spring, in existence at the time of the initial application

- NM Office of the State Engineer - iWATERS database, Visual inspection (certification) of the proposed site

☐ Yes ☐ No

Within incorporated municipal boundaries or within a defined municipal fresh water well field covered under a municipal ordinance adopted pursuant to NMSA 1978, Section 3-27-3, as amended

- Written confirmation or verification from the municipality, Written approval obtained from the municipality

☐ Yes ☐ No

Within 500 feet of a wetland

- US Fish and Wildlife Wetland Identification map, Topographic map, Visual inspection (certification) of the proposed site

☐ Yes ☐ No

Within the area overlying a subsurface mine

- Written confirmation or verification or map from the NM EMNRD-Mining and Mineral Division

☐ Yes ☐ No

Within an unstable area.

- Engineering measures incorporated into the design, NM Bureau of Geology & Mineral Resources, USGS, NM Geological Society, Topographic map

☐ Yes ☐ No

Within a 100-year floodplain

- FEMA map

☐ Yes ☐ No

On-Site Closure Plan Checklist: (19 15 17 13 NMAC) *Instructions: Each of the following items must be attached to the closure plan. Please indicate, by a check mark in the box, that the documents are attached.*

- ☐ Siting Criteria Compliance Demonstrations - based upon the appropriate requirements of 19 15 17 10 NMAC
☐ Proof of Surface Owner Notice - based upon the appropriate requirements of Subsection F of 19 15.17 13 NMAC
☐ Construction/Design Plan of Burial Trench (if applicable) based upon the appropriate requirements of 19 15 17 11 NMAC
☐ Construction/Design Plan of Temporary Pit (for in place burial of a drying pad) - based upon the appropriate requirements of 19.15 17 11 NMAC
☐ Protocols and Procedures - based upon the appropriate requirements of 19 15 17 13 NMAC
☐ Confirmation Sampling Plan (if applicable) - based upon the appropriate requirements of Subsection F of 19 15.17 13 NMAC
☐ Waste Material Sampling Plan - based upon the appropriate requirements of Subsection F of 19 15.17 13 NMAC
☐ Disposal Facility Name and Permit Number (for liquids, drilling fluids and drill cuttings or in case on-site closure standards cannot be achieved)
☐ Soil Cover Design - based upon the appropriate requirements of Subsection H of 19 15 17 13 NMAC
☐ Re-vegetation Plan - based upon the appropriate requirements of Subsection I of 19 15 17 13 NMAC
☐ Site Reclamation Plan - based upon the appropriate requirements of Subsection G of 19 15 17 13 NMAC

19

Operator Application Certification:
 I hereby certify that the information submitted with this application is true, accurate and complete to the best of my knowledge and belief

Name (Print) _____ Title _____
 Signature _____ Date _____
 e-mail address _____ Telephone _____

20

OCD Approval: ☐ Permit Application (including closure plan) ☒ Closure Plan (only) ☐ OCD Conditions (see attachment)

OCD Representative Signature: Jonathan D. Kelly Approval Date: 9/13/2011
 Title: Compliance Officer OCD Permit Number: _____

21

Closure Report (required within 60 days of closure completion): Subsection K of 19 15 17 13 NMAC
Instructions: Operators are required to obtain an approved closure plan prior to implementing any closure activities and submitting the closure report. The closure report is required to be submitted to the division within 60 days of the completion of the closure activities. Please do not complete this section of the form until an approved closure plan has been obtained and the closure activities have been completed

☒ Closure Completion Date: August 25, 2009

22

Closure Method:
☐ Waste Excavation and Removal ☒ On-site Closure Method ☐ Alternative Closure Method ☐ Waste Removal (Closed-loop systems only)
☐ If different from approved plan, please explain _____

23

Closure Report Regarding Waste Removal Closure For Closed-loop Systems That Utilize Above Ground Steel Tanks or Haul-off Bins Only:
Instructions: Please identify the facility or facilities for where the liquids, drilling fluids and drill cuttings were disposed. Use attachment if more than two facilities were utilized.

Disposal Facility Name _____ Disposal Facility Permit Number _____
 Disposal Facility Name _____ Disposal Facility Permit Number _____

Were the closed-loop system operations and associated activities performed on or in areas that will not be used for future service and operations?
☐ Yes (If yes, please demonstrate compliance to the items below) ☐ No

Required for impacted areas which will not be used for future service and operations.
☐ Site Reclamation (Photo Documentation)
☐ Soil Backfilling and Cover Installation
☐ Re-vegetation Application Rates and Seeding Technique

24

Closure Report Attachment Checklist: *Instructions: Each of the following items must be attached to the closure report. Please indicate, by a check mark in the box, that the documents are attached.*

☒ Proof of Closure Notice (surface owner and division)
☒ Proof of Deed Notice (required for on-site closure)
☒ Plot Plan (for on-site closures and temporary pits)
☒ Confirmation Sampling Analytical Results (if applicable)
☐ Waste Material Sampling Analytical Results (if applicable)
☒ Disposal Facility Name and Permit Number
☒ Soil Backfilling and Cover Installation
☒ Re-vegetation Application Rates and Seeding Technique
☒ Site Reclamation (Photo Documentation)

On-site Closure Location. Latitude 36.528461 °N Longitude 107.931319 °W NAD ☐ 1927 ☒ 1983

25

Operator Closure Certification:
 I hereby certify that the information and attachments submitted with this closure report is true, accurate and complete to the best of my knowledge and belief. I also certify that the closure complies with all applicable closure requirements and conditions specified in the approved closure plan

Name (Print) Crystal Tafoya Title Regulatory Tech
 Signature Crystal Tafoya Date 1/28/2010
 e-mail address crystal.tafoya@conocophillips.com Telephone 505-326-9837

Burlington Resources Oil Gas Company, LP
San Juan Basin
Closure Report

Lease Name: HUERFANO UNIT 282E

API No.: 30-045-33911

In accordance with Rule 19.15.17.13 NMAC the following information describes the closure of the temporary pit referenced above. All proper documentation regarding closure activities is being included with the C-144. The temporary pit for this location was constructed and location drilled before June 16, 2008 (effective date for Rule 19.15.17). While closure of the temporary pit did fall within the rule some dates for submittals are after the rig release date.

- Details on Capping and Covering, where applicable. **(See report)**
- Plot Plan (Pit Diagram) **(Included as an attachment)**
- Inspection Reports **(Included as an attachment)**
- Sampling Results **(Included as an attachment)**
- C-105 **(Included as an attachment)**
- Copy of Deed Notice will be filed with County Clerk **(Not required on Federal, State, or Tribal land as stated by FAQ dated October 30, 2008)**

General Plan:

1. All free standing liquids will be removed at the start of the pit closure process from the pit and disposed of in a division-approved facility or recycle, reuse or reclaim the liquids in a manner that the appropriate division district office approves.

All recovered liquids were disposed of at Basin Disposal (Permit #NM-01-005) and any sludge or soil required to be removed to facilitate closure was hauled to Envirotech Land Farm (Permit #NM-01-011) and JFJ Landfarm % IEI (Permit #NM-01-0010B).

2. The preferred method of closure for all temporary pits will be on-site burial, assuming that all the criteria listed in sub-section (B) of 19.15.17.13 are met.

The pit was closed using onsite burial.

3. The surface owner shall be notified of BR's closing of the temporary pit as per the approved closure plan using certified mail, return receipt requested.

The closure process notification to the landowner was sent via email. (See Attached)(Well located on Federal Land, certified mail is not required for Federal Land per BLM/OCD MOU.)

4. Within 6 months of the Rig Off status occurring BR will ensure that temporary pits are closed, re-contoured, and reseeded.

Provision 4 of the closure plan requirements were not met due to rig move off date as noted on C-105 which was prior to pit rule change. Burlington will ensure compliance with this rule in the future.

5. Notice of Closure will be given to the Aztec Division office between 72 hours and one week of closure via email, or verbally. The notification of closure will include the following:
 - i. Operator's name
 - ii. Location by Unit Letter, Section, Township, and Range. Well name and API number.

Notification is attached.

6. Liner of temporary pit shall be removed above "mud level" after stabilization. Removal of liner will consist of manually or mechanically cutting liner at mud level and removing all remaining liner. Care will be taken to remove "All" of the liner i.e., edges of liner entrenched or buried. All excessive liner will be disposed of at a licensed disposal facility.

Liner of temporary pit was removed above "mud level" after stabilization. Removal of the liner consisted of manually cutting liner at mud level and removing all remaining liner. Care was taken to remove "ALL" of the liner i.e., edges of liner entrenched or buried. All excessive liner was disposed of at a licensed disposal facility, (San Juan County Landfill).

7. Pit contents shall be mixed with non-waste containing, earthen material in order to achieve the solidification process. The solidification process will be accomplished using a combination of natural drying and mechanically mixing. Pit contents will be mixed with non-waste, earthen material to a consistency that is deemed a safe and stable. The mixing ratio shall not exceed 3 parts clean soil to 1 part pit contents.

Burlington mixed the Pit contents with non-waste containing, earthen material in order to achieve the solidification process. The solidification process was accomplished by using a combination of natural drying and mechanically mixing. Pit contents were mixed with non-waste, earthen material to a consistency that is deemed as safe and stable. The mixing ratio consisted of approximately 3 parts clean soil to 1 part pit contents.

8. A five point composite sample will be taken of the pit using sampling tools and all samples tested per Subsection B of 19.15.17.13(B)(1)(b). In the event that the criteria are not met, all contents will be handled per Subparagraph (a) of Paragraph (1) of Subsection B of 19.15.17.13 i.e., Dig and haul.

A five point composite sample was taken of the pit using sampling tools and all samples tested per Subsection B of 19.15.17.13(B)(1)(b). (Sample results attached).

Components	Tests Method	Limit (mg/Kg)	Results
Benzene	EPA SW-846 8021B or 8260B	0.2	ND ug/kg
BTEX	EPA SW-846 8021B or 8260B	50	30.9 ug/kg
TPH	EPA SW-846 418.1	2500	130 mg/kg
GRO/DRO	EPA SW-846 8015M	500	71.1 mg/Kg
Chlorides	EPA 300.1	1000/ 500	460 mg/L

9. Upon completion of solidification and testing standards being passed, the pit area will be backfilled with compacted, non-waste containing, earthen material. A minimum of four feet of cover shall be achieved and the cover shall include one foot of suitable material to establish vegetation at the site, or the background thickness of topsoil, whichever is greater. If standard testing fails BR will dig and haul all contents pursuant to 19.15.17.13.i.a. After doing such, confirmation sampling will be conducted to ensure a release has not occurred.

The pit material passed solidification and testing standards. The pit area was then backfilled with compacted, non-waste containing, earthen material. More than four feet of cover was achieved and the cover included one foot of suitable material to establish vegetation at the site.

10. During the stabilization process if the liner is ripped by equipment the Aztec OCD office will be notified within 48 hours and the liner will be repaired if possible. If the liner can not be repaired then all contents will be excavated and removed.

The integrity of the liner was not damaged in the pit closure process.

11. Dig and Haul Material will be transported to the Envirotech Land Farm located 16 miles south of Bloomfield on Angel Peak Road, CR 7175. Permit # NM010011

Dig and Haul was not required.

12. Re-contouring of location will match fit, shape, line, form and texture of the surrounding. Re-shaping will include drainage control, prevent ponding, and prevent erosion. Natural drainages will be unimpeded and water bars and/or silt traps will be placed in areas where needed to prevent erosion on a large scale. Final re-contour shall have a uniform appearance with smooth surface, fitting the natural landscape.

The pit area was re-contoured to match fit, shape, line, form and texture of the surrounding area. Re-shaping included drainage control, to prevent ponding and erosion. Natural drainages were unimpeded and water bars and/or silt traps were placed in areas where needed to prevent erosion on a large scale. Final re-contour has a uniform appearance with smooth surface, fitting the natural landscape.

13. Notification will be sent to OCD when the reclaimed area is seeded.

Provision 13 was accomplished through complying with BLM seeding requirements as allowed by the BLM/OCD MOU.

14. BR shall seed the disturbed areas the first growing season after the operator closes the pit. Seeding will be accomplished via drilling on the contour whenever practical or by other division-approved methods. BLM or Forest Service stipulated seed mixes will be used on federal lands. Vegetative cover will equal 70% of the native perennial vegetative cover (un-impacted) consisting of at least three native plant species, including at least one grass, but not including noxious weeds, and maintain that cover through two successive growing seasons. Repeat seeding or planting will be continued until successful vegetative growth occurs.

Provision 14 was accomplished through complying with BLM seeding requirements as allowed by the BLM/OCD MOU.

15. The temporary pit will be located with a steel marker, no less than four inches in diameter, cemented in a hole three feet deep in the center of the onsite burial upon the abandonment of all the wells on the pad. The marker will be flush with the ground to allow access of the active well pad and for safety concerns. The marker will include a threaded collar to be used for future abandonment. The top of the marker will contain a welded steel 12" square plate that indicates the onsite burial of the temporary pit. The plate will be easily removable and a four foot tall riser will be threaded into the top of the collar marker and welded around the base with the operator's information at the time of all wells on the pad are abandoned. The operator's information will include the following: Operator Name, Lease Name, Well Name and number, Unit Number, Section, Township, Range and an indicator that the marker is an onsite burial location.

Provision 15 was accomplished by installing a steel marker in the temporary pit, no less than four inches in diameter, cemented in a hole three feet deep in the center of the onsite burial. The marker is flush with the ground to allow access of the active well pad and for safety concerns. The top of the marker contains a welded steel 12" square plate that indicates the onsite burial of the temporary pit. The plate contains the following: Operator Name, Lease Name, Well Name and number, Unit Number, Section, Township, Range and an indicator that the marker is an onsite burial location.

The plate will be easily removable and a four foot tall riser will be threaded into the top of the collar marker and welded around the base with the following operator's information at the time of all wells on the pad are abandoned. The riser will be labeled: BR, BLM, HUERFANO UNIT 282E, UL-I, Sec. 31, T 27N, R 10W, API # 30-045-33911

Jaramillo, Marie E

From: Jaramillo, Marie E
Sent: Thursday, July 30, 2009 1:32 PM
To: 'mark_kelly@nm.blm.gov'
Subject: OCD Pit Closure Notification 07/30/09

Importance: High

Mark,

The temporary pit at the well name will be closed on-site. The new OCD pit rule 17 requires the surface owner to be notified. Please let me know if you have any questions. Thanks

Huerfano Unit 282E

*Marie Jaramillo
Staff Regulatory Tech.
ConocoPhillips
Office # (505) 326-9865
Fax # (505) 599-4062
<mailto:marie.e.jaramillo@conocophillips.com>*

DISTRICT I
1625 N. French Dr., Hobbs, N.M. 88240

DISTRICT II
811 South First, Artesia, N.M. 88210

DISTRICT III
1000 Rio Brazos Rd., Aztec, N.M. 87410

DISTRICT IV
2040 South Pacheco, Santa Fe, NM 87606

State of New Mexico
Energy, Minerals & Natural Resources Department

Form C-102
Revised August 15, 2000

Submit to Appropriate District Office
State Lease - 4 Copies
Fee Lease - 3 Copies

OIL CONSERVATION DIVISION

2040 South Pacheco
Santa Fe, NM 87505

☐ AMENDED REPORT

WELL LOCATION AND ACREAGE DEDICATION PLAT

¹ API Number	² Pool Code	³ Pool Name DAKOTA
⁴ Property Code	⁵ Property Name HUERFANO UNIT	⁶ Well Number 282 E
⁷ GRID No.	⁸ Operator Name BURLINGTON RESOURCES O&G CO LP	⁹ Elevation 6086'

¹⁰ Surface Location

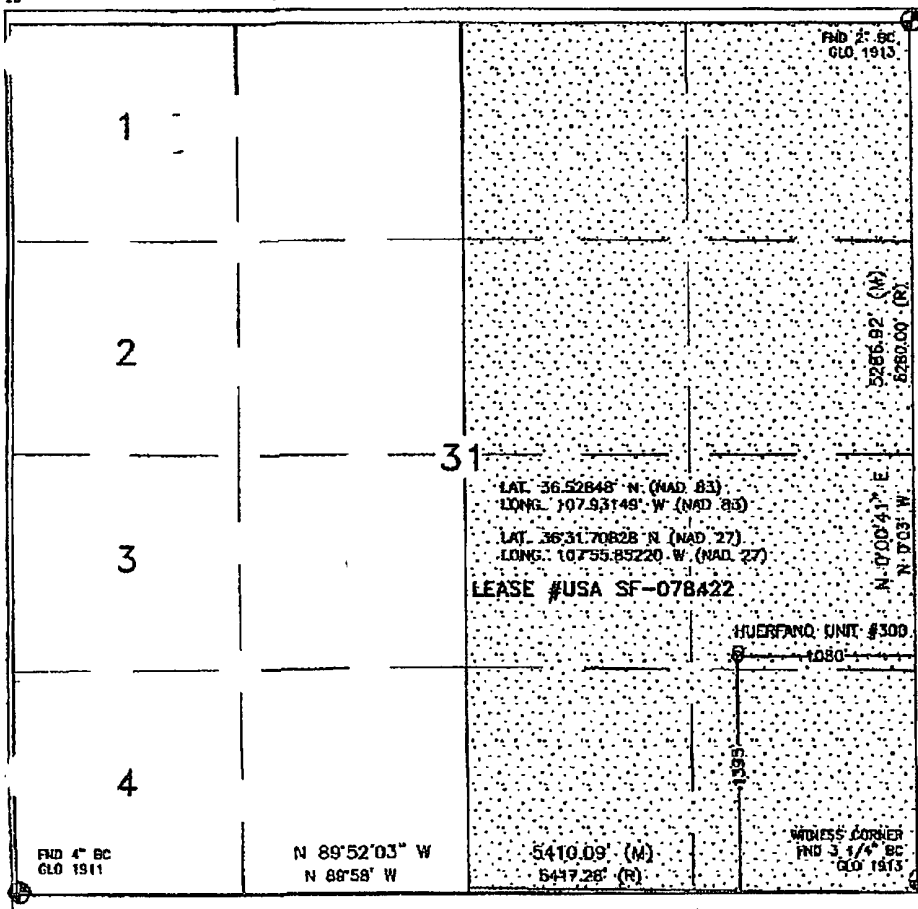
UL or lot no.	Section	Township	Range	Lot Idn	Feet from the	North/South line	Feet from the	East/West line	County
1	31	27N	10W		1395'	SOUTH	1080'	EAST	SAN JUAN

¹¹ Bottom Hole Location If Different From Surface

UL or lot no.	Section	Township	Range	Lot Idn	Feet from the	North/South line	Feet from the	East/West line	County
¹² Dedicated Acres 327.21 Acres - (E/2)			¹³ Joint or Infill		¹⁴ Consolidation Code		¹⁵ Order No.		

NO ALLOWABLE WILL BE ASSIGNED TO THIS COMPLETION UNTIL ALL INTERESTS HAVE BEEN CONSOLIDATED
OR A NON-STANDARD UNIT HAS BEEN APPROVED BY THE DIVISION

18



17 OPERATOR CERTIFICATION

I hereby certify that the information contained herein
is true and complete to the best of my knowledge and
belief

Signature

Printed Name

Title

Date

18 SURVEYOR CERTIFICATION

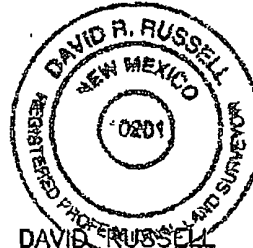
I hereby certify that the well location shown on this plat
was plotted from field notes of actual surveys made by
me or under my supervision, and that the same is true
and correct to the best of my belief.

JUNE 28, 2006

Date of Survey

Signature and Seal of Professional Surveyor:

David R. Russell

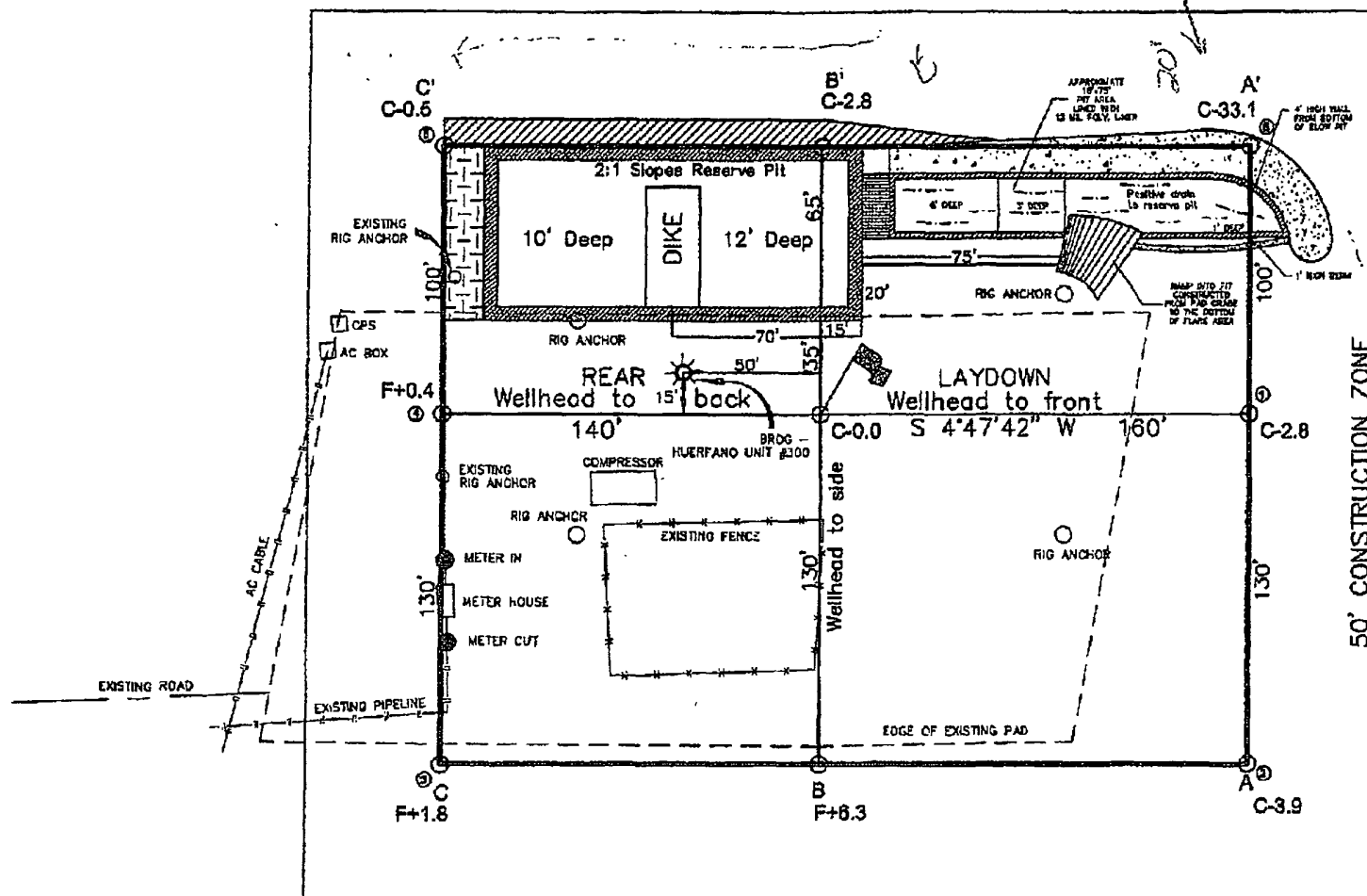


Certificate Number

10201

10

on construction.



NOTE:
RESERVE PIT DIKE: TO BE 8' ABOVE DEEP SIDE (OVERFLOW - 3' WIDE AND 1' ABOVE SHALLOW SIDE).
RUSSELL SURVEYING, INC. IS NOT LIABLE FOR UNDERGROUND UTILITIES OR PIPELINES.
CONTRACTOR SHOULD CALL ONE-CALL FOR LOCATIONS OF ANY MARKED OR UNMARKED, BURIED PIPELINES OR
CABLES ON WELL PAD, IN CONSTRUCTION ZONE A1 & ACCESS ROAD AT LEAST TWO (2) WORKING DAYS PRIOR
TO CONSTRUCTION.

Russell Surveying
1409 W. Aztec Blvd. #5
Aztec, / Mexico 87410
(505) 3-37

**EPA METHOD 8015 Modified
Nonhalogenated Volatile Organics
Total Petroleum Hydrocarbons**

Client:	ConocoPhillips	Project #:	96052-0026
Sample ID:	Huerfano 282E	Date Reported:	07-07-09
Laboratory Number:	50769	Date Sampled:	06-22-09
Chain of Custody No:	7307	Date Received:	07-02-09
Sample Matrix:	Soil	Date Extracted:	07-02-09
Preservative:	Cool	Date Analyzed:	07-06-09
Condition:	Intact	Analysis Requested:	8015 TPH

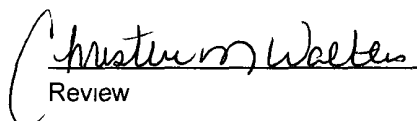
Parameter	Concentration (mg/Kg)	Det. Limit (mg/Kg)
Gasoline Range (C5 - C10)	3.5	0.2
Diesel Range (C10 - C28)	67.6	0.1
Total Petroleum Hydrocarbons	71.1	0.2

ND - Parameter not detected at the stated detection limit.

References: Method 8015B, Nonhalogenated Volatile Organics, Test Methods for Evaluating Solid Waste, SW-846, USEPA, December 1996.

Comments: **Drilling Pit Sample**


Analyst


Review



**EPA METHOD 8015 Modified
Nonhalogenated Volatile Organics
Total Petroleum Hydrocarbons**

Client:	ConocoPhillips	Project #:	96052-0026
Sample ID:	Huerfano 282E Background	Date Reported:	07-07-09
Laboratory Number:	50770	Date Sampled:	06-22-09
Chain of Custody No:	7307	Date Received:	07-02-09
Sample Matrix:	Soil	Date Extracted:	07-02-09
Preservative:	Cool	Date Analyzed:	07-06-09
Condition:	Intact	Analysis Requested:	8015 TPH

Parameter	Concentration (mg/Kg)	Det. Limit (mg/Kg)
Gasoline Range (C5 - C10)	ND	0.2
Diesel Range (C10 - C28)	ND	0.1
Total Petroleum Hydrocarbons	ND	0.2

ND - Parameter not detected at the stated detection limit.

References: Method 8015B, Nonhalogenated Volatile Organics, Test Methods for Evaluating Solid Waste, SW-846, USEPA, December 1996.

Comments: **Drilling Pit Sample**

Analyst

Review



envirotech

Analytical Laboratory

EPA Method 8015 Modified Nonhalogenated Volatile Organics Total Petroleum Hydrocarbons

Quality Assurance Report

Client:	QA/QC	Project #:	N/A
Sample ID:	07-06-09 QA/QC	Date Reported:	07-07-09
Laboratory Number:	50764	Date Sampled:	N/A
Sample Matrix:	Methylene Chloride	Date Received:	N/A
Preservative:	N/A	Date Analyzed:	07-06-09
Condition:	N/A	Analysis Requested:	TPH

	I-Cal Date	I-Cal RF	C-Cal RF	% Difference	Accept. Range
Gasoline Range C5 - C10	05-07-07	1.0292E+003	1.0296E+003	0.04%	0 - 15%
Diesel Range C10 - C28	05-07-07	1.0645E+003	1.0650E+003	0.04%	0 - 15%

Blank Conc. (mg/L - mg/Kg)	Concentration	Detection Limit
Gasoline Range C5 - C10	ND	0.2
Diesel Range C10 - C28	ND	0.1
Total Petroleum Hydrocarbons	ND	0.2

Duplicate Conc. (mg/Kg)	Sample	Duplicate	% Difference	Accept. Range
Gasoline Range C5 - C10	ND	ND	0.0%	0 - 30%
Diesel Range C10 - C28	ND	ND	0.0%	0 - 30%

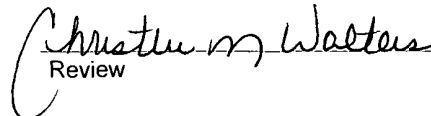
Spike Conc. (mg/Kg)	Sample	Spike Added	Spike Result	% Recovery	Accept. Range
Gasoline Range C5 - C10	ND	250	254	102%	75 - 125%
Diesel Range C10 - C28	ND	250	257	103%	75 - 125%

ND - Parameter not detected at the stated detection limit.

References: Method 8015B, Nonhalogenated Volatile Organics, Test Methods for Evaluating Solid Waste, SW-846, USEPA, December 1996.

Comments: QA/QC for Samples 50759 and 50764 - 50772.

Analyst 

Review 



Client:	ConocoPhillips	Project #:	96052-0026
Sample ID:	Huerfano 282E	Date Reported:	07-07-09
Laboratory Number:	50769	Date Sampled:	06-22-09
Chain of Custody:	7307	Date Received:	07-02-09
Sample Matrix:	Soil	Date Analyzed:	07-06-09
Preservative:	Cool	Date Extracted:	07-02-09
Condition:	Intact	Analysis Requested:	BTEX

Parameter	Concentration (ug/Kg)	Det. Limit (ug/Kg)
Benzene	ND	0.9
Toluene	5.4	1.0
Ethylbenzene	3.5	1.0
p,m-Xylene	14.8	1.2
o-Xylene	7.2	0.9
Total BTEX	30.9	

ND - Parameter not detected at the stated detection limit.

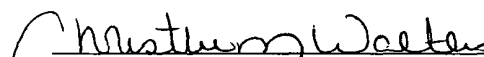
Surrogate Recoveries:	Parameter	Percent Recovery
	Fluorobenzene	97.0 %
	1,4-difluorobenzene	97.0 %
	Bromochlorobenzene	97.0 %

References: Method 5030B, Purge-and-Trap, Test Methods for Evaluating Solid Waste, SW-846, USEPA, December 1996.

Method 8021B, Aromatic Volatile Organics, Test Methods for Evaluating Solid Waste, SW-846, USEPA, December 1996.

Comments: Drilling Pit Sample


Analyst


Review



Client:	ConocoPhillips	Project #:	96052-0026
Sample ID:	Huerfano 282E Background	Date Reported:	07-07-09
Laboratory Number:	50770	Date Sampled:	06-22-09
Chain of Custody:	7307	Date Received:	07-02-09
Sample Matrix:	Soil	Date Analyzed:	07-06-09
Preservative:	Cool	Date Extracted:	07-02-09
Condition:	Intact	Analysis Requested:	BTEX

Parameter	Concentration (ug/Kg)	Det. Limit (ug/Kg)
Benzene	ND	0.9
Toluene	3.6	1.0
Ethylbenzene	1.3	1.0
p,m-Xylene	1.6	1.2
o-Xylene	2.4	0.9
Total BTEX	8.9	

ND - Parameter not detected at the stated detection limit.

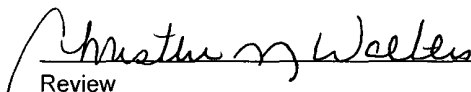
Surrogate Recoveries:	Parameter	Percent Recovery
	Fluorobenzene	99.0 %
	1,4-difluorobenzene	99.0 %
	Bromochlorobenzene	99.0 %

References: Method 5030B, Purge-and-Trap, Test Methods for Evaluating Solid Waste, SW-846, USEPA, December 1996.

Method 8021B, Aromatic Volatile Organics, Test Methods for Evaluating Solid Waste, SW-846, USEPA, December 1996.

Comments: **Drilling Pit Sample**


Analyst


Review



envirotech

Analytical Laboratory

EPA METHOD 8021 AROMATIC VOLATILE ORGANICS

Client	N/A	Project #	N/A
Sample ID.	07-06-BT QA/QC	Date Reported	07-07-09
Laboratory Number	50764	Date Sampled	N/A
Sample Matrix	Soil	Date Received	N/A
Preservative	N/A	Date Analyzed	07-06-09
Condition	N/A	Analysis	BTEX

Calibration and Detection Limits (ug/L)	I-Cal RF	C-Cal RF	%Diff	Blank Conc	Detect Limit
		Accept. Range 0 - 15%			
Benzene	5.7394E+006	5.7509E+006	0.2%	ND	0.1
Toluene	5.3754E+006	5.3862E+006	0.2%	ND	0.1
Ethylbenzene	4.8272E+006	4.8369E+006	0.2%	ND	0.1
p,m-Xylene	1.2400E+007	1.2425E+007	0.2%	ND	0.1
o-Xylene	4.6082E+006	4.6174E+006	0.2%	ND	0.1

Duplicate Conc. (ug/Kg)	Sample	Duplicate	%Diff	Accept Range	Detect Limit
Benzene	1.0	0.9	10.0%	0 - 30%	0.9
Toluene	2.5	2.4	4.0%	0 - 30%	1.0
Ethylbenzene	ND	ND	0.0%	0 - 30%	1.0
p,m-Xylene	2.8	2.6	7.1%	0 - 30%	1.2
o-Xylene	2.4	2.3	4.2%	0 - 30%	0.9

Spike Conc. (ug/Kg)	Sample	Amount Spiked	Spiked Sample	% Recovery	Accept Range
Benzene	1.0	50.0	50.5	99.0%	39 - 150
Toluene	2.5	50.0	49.2	93.7%	46 - 148
Ethylbenzene	ND	50.0	48.0	96.0%	32 - 160
p,m-Xylene	2.8	100	99.6	96.9%	46 - 148
o-Xylene	2.4	50.0	49.7	94.8%	46 - 148

ND - Parameter not detected at the stated detection limit

References Method 5030B, Purge-and-Trap, Test Methods for Evaluating Solid Waste, SW-846, USEPA, December 1996
 Method 8021B, Aromatic and Halogenated Volatiles by Gas Chromatography Using Photoionization and/or Electrolytic Conductivity Detectors, SW-846, USEPA December 1996

Comments: QA/QC for Samples 50759 and 50764 - 50772.

Analyst

Review



Client:	ConocoPhillips	Project #:	96052-0026
Sample ID:	Huerfano 282E	Date Reported:	07-07-09
Laboratory Number:	50769	Date Sampled:	06-22-09
Chain of Custody No:	7307	Date Received:	07-02-09
Sample Matrix:	Soil	Date Extracted:	07-06-09
Preservative:	Cool	Date Analyzed:	07-06-09
Condition:	Intact	Analysis Needed:	TPH-418.1

Parameter	Concentration (mg/kg)	Det. Limit (mg/kg)
Total Petroleum Hydrocarbons	130	5.9

ND = Parameter not detected at the stated detection limit.

References: Method 418.1, Petroleum Hydrocarbons, Total Recoverable, Chemical Analysis of Water and Waste, USEPA Storet No. 4551, 1978.

Comments: **Drilling Pit Sample.**

Analyst

Review

Client:	ConocoPhillips	Project #:	96052-0026
Sample ID:	Huerfano 282E Background	Date Reported:	07-07-09
Laboratory Number:	50770	Date Sampled:	06-22-09
Chain of Custody No:	7307	Date Received:	07-02-09
Sample Matrix:	Soil	Date Extracted:	07-06-09
Preservative:	Cool	Date Analyzed:	07-06-09
Condition:	Intact	Analysis Needed:	TPH-418.1

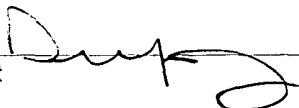
Parameter	Concentration (mg/kg)	Det. Limit (mg/kg)
Total Petroleum Hydrocarbons	27.3	5.9

ND = Parameter not detected at the stated detection limit.

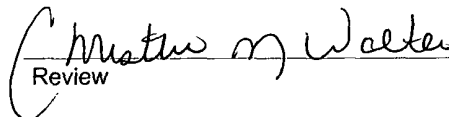
References: Method 418.1, Petroleum Hydrocarbons, Total Recoverable, Chemical Analysis of Water and Waste, USEPA Storet No. 4551, 1978.

Comments: **Drilling Pit Sample.**

Analyst



Review





envirotech

Analytical Laboratory

EPA METHOD 418.1
TOTAL PETROLEUM
HYDROCARBONS
QUALITY ASSURANCE REPORT

Client:	QA/QC	Project #:	N/A
Sample ID:	QA/QC	Date Reported:	07-07-09
Laboratory Number:	07-06-TPH.QA/QC 50759	Date Sampled:	N/A
Sample Matrix:	Freon-113	Date Analyzed:	07-06-09
Preservative:	N/A	Date Extracted:	07-06-09
Condition:	N/A	Analysis Needed:	TPH

Calibration	I-Cal Date	C-Cal Date	I-Cal RF	C-Cal RF	% Difference	Accept. Range
	06-26-09	07-06-09	1,480	1,490	0.7%	+/- 10%

Blank Conc. (mg/Kg)	Concentration	Detection Limit
TPH	ND	5.9

Duplicate Conc. (mg/Kg)	Sample	Duplicate	% Difference	Accept. Range
TPH	593	676	14.0%	+/- 30%

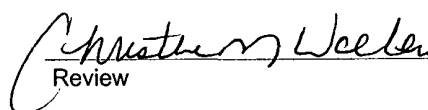
Spike Conc. (mg/Kg)	Sample	Spike Added	Spike Result	% Recovery	Accept Range
TPH	593	2,000	2,190	84.5%	80 - 120%

ND = Parameter not detected at the stated detection limit.

References: Method 418.1, Petroleum Hydrocarbons, Total Recoverable, Chemical Analysis of Water and Waste, USEPA Storet No. 4551, 1978.

Comments: QA/QC for Samples 50759 and 50764 - 50772.

Analyst 

Review 



Client:	ConocoPhillips	Project #:	96052-0026
Sample ID:	Huerfano 282E	Date Reported:	07-07-09
Lab ID#:	50769	Date Sampled:	06-22-09
Sample Matrix:	Soil	Date Received:	07-02-09
Preservative:	Cool	Date Analyzed:	07-07-09
Condition:	Intact	Chain of Custody:	7307

Parameter

Concentration (mg/Kg)

Total Chloride

460

Reference: U.S.E.P.A., 4500B, "Methods for Chemical Analysis of Water and Wastes", 1983.
Standard Methods For The Examination of Water And Waste Water", 18th ed., 1992.

Comments: **Drilling Pit Sample.**

Analyst

Review



Client:	ConocoPhillips	Project #:	96052-0026
Sample ID:	Huerfano 282E Background	Date Reported:	07-07-09
Lab ID#:	50770	Date Sampled:	06-22-09
Sample Matrix:	Soil	Date Received:	07-02-09
Preservative:	Cool	Date Analyzed:	07-07-09
Condition:	Intact	Chain of Custody:	7307

Parameter	Concentration (mg/Kg)
-----------	-----------------------

Total Chloride

125

Reference: U.S.E.P.A., 4500B, "Methods for Chemical Analysis of Water and Wastes", 1983.
Standard Methods For The Examination of Water And Waste Water", 18th ed., 1992.

Comments: **Drilling Pit Sample.**

Analyst

Review

Submit To Appropriate District Office Two Copies District I 1625 N French Dr., Hobbs, NM 88240 District II 1301 W Grand Avenue, Artesia, NM 88210 District III 1000 Rio Brazos Rd., Aztec, NM 87410 District IV 1220 S St Francis Dr., Santa Fe, NM 87505	State of New Mexico Energy, Minerals and Natural Resources Oil Conservation Division 1220 South St. Francis Dr. Santa Fe, NM 87505	Form C-105 July 17, 2008 1. WELL API NO. 30-045-33911 2. Type of Lease <input type="checkbox"/> STATE <input type="checkbox"/> FEE <input checked="" type="checkbox"/> FED/INDIAN 3. State Oil & Gas Lease No SF-078422																		
WELL COMPLETION OR RECOMPLETION REPORT AND LOG																				
4. Reason for filing. <input type="checkbox"/> COMPLETION REPORT (Fill in boxes #1 through #31 for State and Fee wells only) <input checked="" type="checkbox"/> C-144 CLOSURE ATTACHMENT (Fill in boxes #1 through #9, #15 Date Rig Released and #32 and/or #33, attach this and the plat to the C-144 closure report in accordance with 19 15.17.13.K NMAC)		5. Lease Name or Unit Agreement Name Huerfano Unit 6. Well Number 282E																		
7. Type of Completion. <input checked="" type="checkbox"/> NEW WELL <input type="checkbox"/> WORKOVER <input type="checkbox"/> DEEPENING <input type="checkbox"/> PLUGBACK <input type="checkbox"/> DIFFERENT RESERVOIR <input type="checkbox"/> OTHER																				
8. Name of Operator Burlington Resources Oil Gas Company, LP		9. OGRID 14538																		
10. Address of Operator PO Box 4298, Farmington, NM 87499		11. Pool name or Wildcat																		
12. Location	Unit Ltr	Section	Township	Range	Lot	Feet from the	N/S Line	Feet from the	E/W Line	County										
Surface:																				
BH:																				
13. Date Spudded	14. Date T D. Reached	15. Date Rig Released 6/3/2008		16. Date Completed (Ready to Produce)			17. Elevations (DF and RKB, RT, GR, etc.)													
18. Total Measured Depth of Well		19. Plug Back Measured Depth		20. Was Directional Survey Made?			21. Type Electric and Other Logs Run													
22. Producing Interval(s), of this completion - Top, Bottom, Name																				
23. CASING RECORD (Report all strings set in well)																				
CASING SIZE		WEIGHT LB/FT		DEPTH SET		HOLE SIZE		CEMENTING RECORD		AMOUNT PULLED										
24. LINER RECORD						25. TUBING RECORD														
SIZE	TOP	BOTTOM	SACKS CEMENT	SCREEN	SIZE	DEPTH SET	PACKER SET													
26. Perforation record (interval, size, and number)					27. ACID, SHOT, FRACTURE, CEMENT, SQUEEZE, ETC. <table border="1" style="width:100%; border-collapse: collapse;"> <tr> <th>DEPTH INTERVAL</th> <th>AMOUNT AND KIND MATERIAL USED</th> </tr> <tr><td> </td><td> </td></tr> <tr><td> </td><td> </td></tr> <tr><td> </td><td> </td></tr> <tr><td> </td><td> </td></tr> </table>						DEPTH INTERVAL	AMOUNT AND KIND MATERIAL USED								
DEPTH INTERVAL	AMOUNT AND KIND MATERIAL USED																			
28. PRODUCTION																				
Date First Production		Production Method (<i>Flowing, gas lift, pumping - Size and type pump</i>)				Well Status (<i>Prod. or Shut-in</i>)														
Date of Test	Hours Tested	Choke Size	Prod'n For Test Period	Oil - Bbl	Gas - MCF	Water - Bbl	Gas - Oil Ratio													
Flow Tubing Press.	Casing Pressure	Calculated 24-Hour Rate	Oil - Bbl	Gas - MCF	Water - Bbl	Oil Gravity - API - (<i>Corr</i>)														
29. Disposition of Gas (<i>Sold, used for fuel, vented, etc.</i>)							30. Test Witnessed By													
31. List Attachments																				
32. If a temporary pit was used at the well, attach a plat with the location of the temporary pit.																				
33. If an on-site burial was used at the well, report the exact location of the on-site burial																				
Latitude 36.528461°N Longitude 107.931319°W NAD <input type="checkbox"/> 1927 <input checked="" type="checkbox"/> 1983																				
I hereby certify that the information shown on both sides of this form is true and complete to the best of my knowledge and belief																				
Signature <i>Crystal Tafoya</i>			Printed Name Crystal Tafoya		Title: Regulatory Tech		Date: <i>1/28/2010</i>													
E-mail Address crystal.tafoya@conocophillips.com																				

ConocoPhillips

6

Pit Closure Form:

Date: 8/25/2009

Well Name: Huertano
Huerfano 282 E

Footages: 1395 FSL 1080 FEL Unit Letter: I

Section: 31, T-27-N, R-10-W, County: SJ State: NM

Contractor Closing Pit: Acc

Construction Inspector: Norman Faver Date: 8/25/2009

Inspector Signature: Norman Faver

Tafoya, Crystal

From: Silverman, Jason M
Sent: Thursday, August 20, 2009 9:24 AM
To: Brandon.Powell@state.nm.us; Mark Kelly; Robert Switzer; Sherrie Landon
Cc: 'acedragline@yahoo.com'; 'BOS'; Faver Norman (faverconsulting@yahoo.com); Jared Chavez; Bassing, Kendal R.; Scott Smith; Silverman, Jason M; Smith Eric (sconsulting.eric@gmail.com); Terry Lowe; Becker, Joey W; Bonilla, Amanda; Bowker, Terry D; Busse, Dollie L; Chavez, Virgil E; Gordon Chenault; GRP:SJBU Production Leads; Hockett, Christy R; Johnson, Kirk L; Kennedy, Jim R; Lopez, Richard A; Nelson, Terry J; O'Nan, Mike J.; Peace, James T; Pierce, Richard M; Poulson, Mark E; Richards, Brian; Smith, Randall O; Stamets, Steve A; Thacker, LARRY; Work, Jim A; Blair, Maxwell O; Blakley, Mac; Clark, Joni E; Farrell, Juanita R; Gillette, Steven L (Gray Surface Specialties and Consulting, Ltd.); Greer, David A; Hines, Derek J (Finney Land Co.); Maxwell, Mary Alice; McWilliams, Peggy L; Seabolt, Elmo F; Stallsmith, Mark R
Subject: Reclamation Notice: Huerfano Unit 282E
Importance: High
Attachments: Huerfano Unit 282E-Revised .doc

Ace Services will move a tractor to the **Huerfano Unit 282E** on **Monday, August 24th, 2009** to start the reclamation process.
Please contact Norm Faver (320-0670) if you have any questions or need further assistance.

Thanks, Jason Silverman

Burlington Resources Well- Network #10216655

San Juan County, NM:

Huerfano Unit 282E - BLM surface / BLM minerals

Twinned on Huerfano 300

1395' FSL, 1080' FEL

Sec. 31, T27N, R10W

Unit Letter 'I'

Lease #: USA SF-078422

API #: 30-045-33911

Latitude: 36° 31' 42.52800" N (NAD 83)

Longitude: 107° 55' 53.36400" W

Elevation: 6086'

Jason Silverman -----

Construction Technician

ConocoPhillips Company - SJBU

Projects Team

P.O. Box 4289

Farmington, NM 87499-4289

505-326-9821

Jason.M.Silverman@ConocoPhillips.com

1/28/2010

Canood Phillips

Reclamation Form:

Date: 10/21/2009

Well Name: Huerfano 282 E

Footages: 1395 FSL 1080 FEL Unit Letter: I

Section: 31, T-27-N, R-10-W, County: SJ State: NM


Reclamation Contractor: Acc

Reclamation Date: 11/9/2009

Road Completion Date: 10/2009

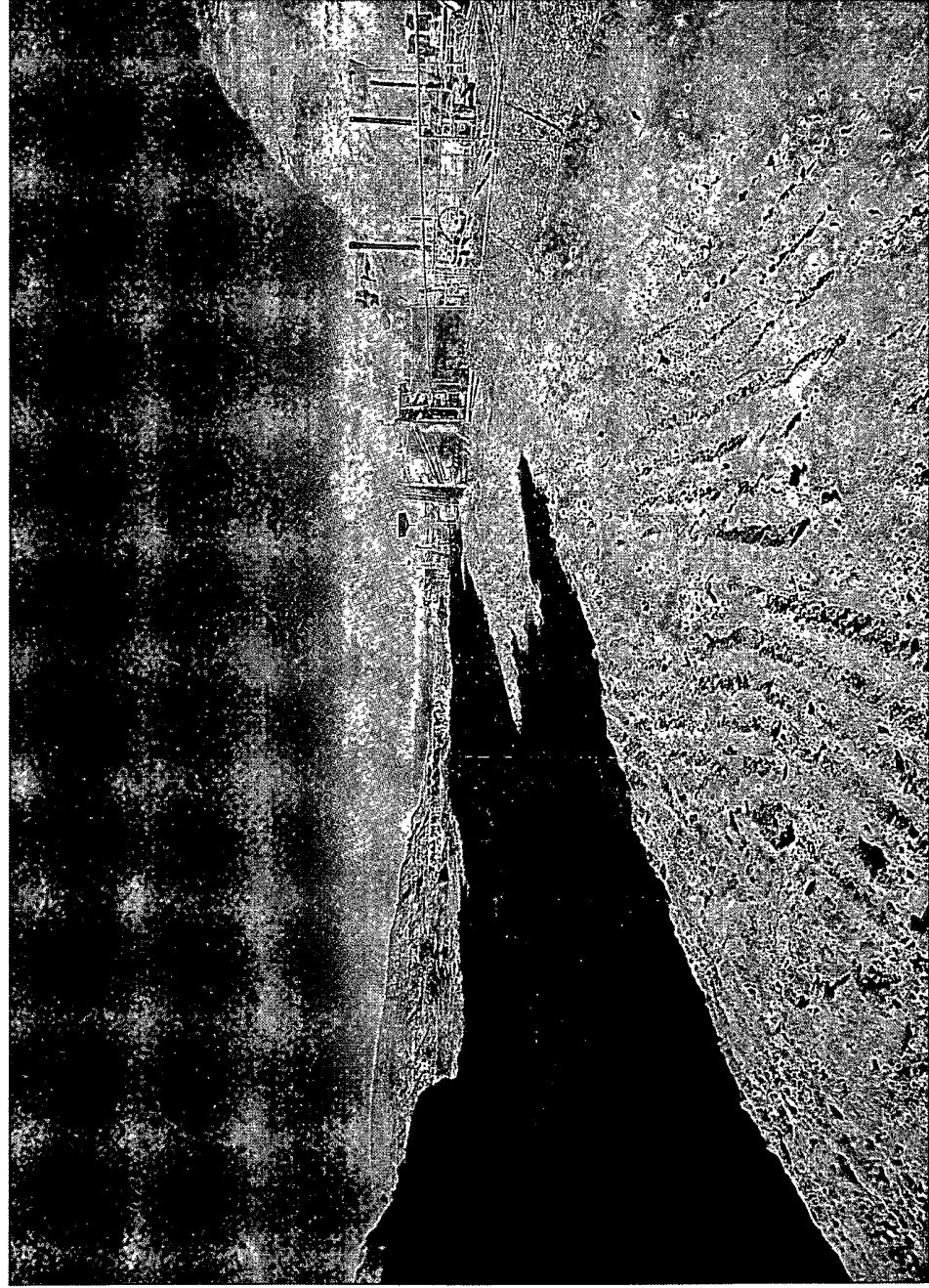
Seeding Date: 10/15/2009

Construction Inspector: Norman Faver Date: 10/21/2009

Inspector Signature: 



Huerfano # 282E
S31T027N, R010W
OBL, B1L M, FBTR
TE



WELL PAD SAFETY AND ENVIRONMENTAL CHECK LIST

WELL NAME: Huerfano Unit 282E

API#: 30-045-33911

DATE	INSPECTOR	SAFETY CHECK	LOCATION CHECK	PICTURES TAKEN	COMMENTS
6/9/08	Scott Smith	X	X		This location is not marked! No sign! Tears in liner, repair fence, pick up excess liner by blow pit, contacted MVCI and OCD
6/12/08	Scott Smith	X	X		Fence and liner in good condition, ground the well signs needs t-post
6/19/08	Scott Smith	x	x		Need a new well sign and t-posts to mount it on
6/26/08	Scott Smith	X	X		Fence and liner in good condition
7/3/08	Scott Smith				Rig on location
7/10/08	Scott Smith	X	X		Repair fence, clips M from t-posts and tighten
7/31/08	Scott Smith	X	X	X	Fence and liner in good condition
8/7/08	Scott Smith	X	X	X	Fence and liner in good condition
8/14/08	Scott Smith	X	X	X	Fence and liner in good condition
8/21/08	Scott Smith	X	X	X	Fence and liner in good condition
8/28/08	Scott Smith	X	X	X	Fence and liner in good condition
9/11/08	Scott Smith	X	X	X	Fence and liner in good condition
9/17/08	Scott Smith	X	X	X	Fence and liner in good condition
9/25/08	Scott Smith	X	X	X	Fence and liner in good condition
10/9/08	Scott Smith	X	X	X	Fence and liner in good condition
10/27/08	Scott Smith	X	X	X	Fence and liner in good condition
11/10/08	Scott Smith	X	X	X	Fence and liner in good condition
11/13/08	Scott Smith	X	X	X	Fence and liner in good condition, no diversion ditch at pit

11/26/08	Scott Smith	X	X	X	Fence and liner in good condition
12/4/08	Scott Smith	X	X	X	Fence and liner in good condition, no diversion ditch at pit
12/11/08	Scott Smith	X	X	X	Fence and liner in good condition, no diversion ditch at pit
12/24/08	Scott Smith	X	X	X	Fence and liner in good condition, no diversion ditch at pit
12/24/08	Scott Smith	X	X	X	Fence and liner in good condition, no diversion ditch at pit
1/3/09	Scott Smith				FRAC equipment moving on location
1/8/09	Scott Smith				
1/15/09	Scott Smith				Rig on location
1/29/09	Scott Smith	X	X	X	Fence in good condition, liner burned at blow pit
2/10/09	Scott Smith	X	X	X	Liner in good condition, fence in bad shape due to facilities being installed on location
2/12/09	Scott Smith	X	X	X	Liner burned at blow pit, fence needs repair (crew installing at this time, contacted OCD
2/19/09	Scott Smith	X	X	X	Fence and liner in good condition, no diversion ditch at pit
3/5/09	Scott Smith	X	X	X	Fence and liner in good condition, no diversion ditch at pit
3/12/09	Scott Smith	X	X	X	Fence and liner in good condition, crew from Resource Electronics and Controls working on location, did not have signs or gas monitor, stopped job and discussed it with them, let them continue job after guidance from Kendal.
3/20/09	Scott Smith	X	X	X	Fence and liner in good condition, no diversion ditch at pit
4/4/09	Scott Smith	X	X	X	Fence and liner in good condition, no diversion ditch at pit
4/10/09	Scott Smith	X	X	X	Fence and liner in good condition, no diversion ditch at pit
4/16/09	Scott Smith	X	X	X	Fence and liner in good condition, no diversion ditch at pit

4/23/09	Scott Smith	X	X	X	Fence and liner in good condition, no diversion ditch at pit
4/30/09	Scott Smith	X	X	X	Fence and liner in good condition, no diversion ditch at pit
5/14/09	Scott Smith	X	X	X	Fence and liner in good condition, no diversion ditch at pit
5/21/09	Scott Smith	X	X	X	Fence and liner in good condition, no diversion ditch at pit
5/28/09	Scott Smith	X	X	X	Fence and liner in good condition, no diversion ditch at pit
6/4/09	Scott Smith	X	X	X	Fence and liner in good condition, no diversion ditch at pit
6/11/09	Scott Smith	X	X	X	Fence and liner in good condition, no diversion ditch at pit
6/18/09	Scott Smith	X	X	X	Fence and liner in good condition, no diversion ditch at pit
6/29/09	Scott Smith	X	X	X	Fence and liner in good condition, no diversion ditch at pit
7/7/09	Scott Smith	X	X	X	Fence and liner in good condition, no diversion ditch at pit
7/9/09	Scott Smith	X	X	X	Fence and liner in good condition, no diversion ditch at pit
7/16/09	Scott Smith	X	X		Fence and liner in good condition, no diversion ditch at pit
7/23/09	Scott Smith	X	X		Fence and liner in good condition, no diversion ditch at pit
7/30/09	Scott Smith	X	X		Fence and liner in good condition, no diversion ditch at pit
8/6/09	Scott Smith	X	X		Fence and liner in good condition, no diversion ditch at pit
8/13/09	Scott Smith	X	X		Fence and liner in good condition, no diversion ditch at pit
8/20/09	Scott Smith	X	X		Fence and liner in good condition, no diversion ditch at pit
8/25/09	N. Faver				Pit Closed