

District I
1625 N French Dr, Hobbs, NM 88240
District II
1301 W Grand Avenue, Artesia, NM 88210
District III
1000 Rio Brazos Road, Aztec, NM 87410
District IV
1220 S St Francis Dr, Santa Fe, NM 87505

State of New Mexico
Energy Minerals and Natural Resources
Department
Oil Conservation Division
1220 South St. Francis Dr.
Santa Fe, NM 87505

Form C-144
July 21, 2008

For temporary pits, closed-loop systems, and below-grade tanks, submit to the appropriate NMOCD District Office
For permanent pits and exceptions submit to the Santa Fe Environmental Bureau office and provide a copy to the appropriate NMOCD District Office

**Pit, Closed-Loop System, Below-Grade Tank, or
Proposed Alternative Method Permit or Closure Plan Application**

8365
Type of action: ☒ Permit of a pit, closed-loop system, below-grade tank, or proposed alternative method
☐ Closure of a pit, closed-loop system, below-grade tank, or proposed alternative method
☐ Modification to an existing permit
☐ Closure plan only submitted for an existing permitted or non-permitted pit, closed-loop system, below-grade tank, or proposed alternative method

Instructions: Please submit one application (Form C-144) per individual pit, closed-loop system, below-grade tank or alternative request

Please be advised that approval of this request does not relieve the operator of liability should operations result in pollution of surface water, ground water or the environment Nor does approval relieve the operator of its responsibility to comply with any other applicable governmental authority's rules, regulations or ordinances

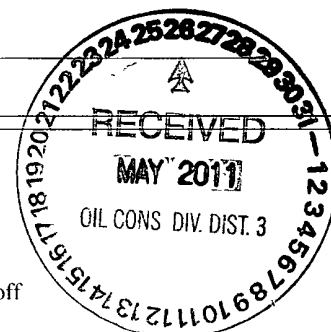
1
Operator Williams Operating Co, LLC OGRID # 120782
Address PO Box 640 / 721 S Main Aztec, NM 87410
Facility or well name Rosa Unit 154C
API Number 30-039- 31045 OCD Permit Number _____
U/L or Qtr/Qtr P Section 7 Township 31N Range 5W County Rio Arriba
Center of Proposed Design Latitude 36.90935N Longitude -107.39756W NAD: ☐ 1927 ☒ 1983
Surface Owner ☒ Federal ☐ State ☐ Private ☐ Tribal Trust or Indian Allotment

2
☒ **Pit:** Subsection F or G of 19.15.17.11 NMAC
Temporary ☒ Drilling ☐ Workover
☐ Permanent ☐ Emergency ☐ Cavitation ☐ P&A
☒ Lined ☐ Unlined Liner type Thickness 20 mil ☒ LLDPE ☐ HDPE ☐ PVC ☐ Other _____
☒ String-Reinforced
Liner Seams ☒ Welded ☒ Factory ☐ Other _____ Volume 20,000 bbl Dimensions L 140' x W 70' x D 12'

3
☐ **Closed-loop System:** Subsection H of 19.15.17.11 NMAC
Type of Operation ☐ P&A ☐ Drilling a new well ☐ Workover or Drilling (Applies to activities which require prior approval of a permit or notice of intent)
☐ Drying Pad ☐ Above Ground Steel Tanks ☐ Haul-off Bins ☐ Other _____
☐ Lined ☐ Unlined Liner type Thickness _____ mil ☐ LLDPE ☐ HDPE ☐ PVC ☐ Other _____
Liner Seams ☐ Welded ☐ Factory ☐ Other _____

4
☐ **Below-grade tank:** Subsection I of 19.15.17.11 NMAC
Volume _____ bbl Type of fluid _____
Tank Construction material. _____
☐ Secondary containment with leak detection ☐ Visible sidewalls, liner, 6-inch lift and automatic overflow shut-off
☐ Visible sidewalls and liner ☐ Visible sidewalls only ☐ Other _____
Liner type Thickness _____ mil ☐ HDPE ☐ PVC ☐ Other _____

5
☐ **Alternative Method:**
Submittal of an exception request is required. Exceptions must be submitted to the Santa Fe Environmental Bureau office for consideration of approval



6

Fencing: Subsection D of 19.15.17.11 NMAC (*Applies to permanent pits, temporary pits, and below-grade tanks*)

- ☐ Chain link, six feet in height, two strands of barbed wire at top (*Required if located within 1000 feet of a permanent residence, school, hospital, institution or church*)
- ☐ Four foot height, four strands of barbed wire evenly spaced between one and four feet
- ☒ Alternate Please specify As per BLM specifications

7

Netting: Subsection E of 19.15.17.11 NMAC (*Applies to permanent pits and permanent open top tanks*)

- ☐ Screen ☐ Netting ☐ Other _____
- ☒ Monthly inspections (If netting or screening is not physically feasible)

8

Signs: Subsection C of 19.15.17.11 NMAC

- ☐ 12"x 24", 2" lettering, providing Operator's name, site location, and emergency telephone numbers
- ☒ Signed in compliance with 19.15.3.103 NMAC

9

Administrative Approvals and Exceptions:

Justifications and/or demonstrations of equivalency are required Please refer to 19.15.17 NMAC for guidance.

Please check a box if one or more of the following is requested, if not leave blank:

- ☒ Administrative approval(s). Requests must be submitted to the appropriate division district or the Santa Fe Environmental Bureau office for consideration of approval
- ☐ Exception(s). Requests must be submitted to the Santa Fe Environmental Bureau office for consideration of approval

10

Siting Criteria (regarding permitting): 19.15.17.10 NMAC

Instructions: The applicant must demonstrate compliance for each siting criteria below in the application. Recommendations of acceptable source material are provided below. Requests regarding changes to certain siting criteria may require administrative approval from the appropriate district office or may be considered an exception which must be submitted to the Santa Fe Environmental Bureau office for consideration of approval. Applicant must attach justification for request. Please refer to 19.15.17.10 NMAC for guidance. Siting criteria does not apply to drying pads or above-grade tanks associated with a closed-loop system.

Ground water is less than 50 feet below the bottom of the temporary pit, permanent pit, or below-grade tank - NM Office of the State Engineer - iWATERS database search, USGS, Data obtained from nearby wells	<input type="checkbox"/> Yes <input checked="" type="checkbox"/> No
Within 300 feet of a continuously flowing watercourse, or 200 feet of any other significant watercourse or lakebed, sinkhole, or playa lake (measured from the ordinary high-water mark) - Topographic map, Visual inspection (certification) of the proposed site	<input type="checkbox"/> Yes <input checked="" type="checkbox"/> No
Within 300 feet from a permanent residence, school, hospital, institution, or church in existence at the time of initial application (<i>Applies to temporary, emergency, or cavitation pits and below-grade tanks</i>) - Visual inspection (certification) of the proposed site, Aerial photo, Satellite image	<input type="checkbox"/> Yes <input checked="" type="checkbox"/> No <input type="checkbox"/> NA
Within 1000 feet from a permanent residence, school, hospital, institution, or church in existence at the time of initial application (<i>Applies to permanent pits</i>) - Visual inspection (certification) of the proposed site; Aerial photo; Satellite image	<input type="checkbox"/> Yes <input type="checkbox"/> No <input checked="" type="checkbox"/> NA
Within 500 horizontal feet of a private, domestic fresh water well or spring that less than five households use for domestic or stock watering purposes, or within 1000 horizontal feet of any other fresh water well or spring, in existence at the time of initial application - NM Office of the State Engineer - iWATERS database search; Visual inspection (certification) of the proposed site	<input type="checkbox"/> Yes <input checked="" type="checkbox"/> No
Within incorporated municipal boundaries or within a defined municipal fresh water well field covered under a municipal ordinance adopted pursuant to NMSA 1978, Section 3-27-3, as amended - Written confirmation or verification from the municipality, Written approval obtained from the municipality	<input type="checkbox"/> Yes <input checked="" type="checkbox"/> No
Within 500 feet of a wetland - US Fish and Wildlife Wetland Identification map, Topographic map, Visual inspection (certification) of the proposed site	<input type="checkbox"/> Yes <input checked="" type="checkbox"/> No
Within the area overlying a subsurface mine. - Written confirmation or verification or map from the NM EMNRD-Mining and Mineral Division	<input type="checkbox"/> Yes <input checked="" type="checkbox"/> No
Within an unstable area - Engineering measures incorporated into the design; NM Bureau of Geology & Mineral Resources, USGS, NM Geological Society, Topographic map	<input type="checkbox"/> Yes <input checked="" type="checkbox"/> No
Within a 100-year floodplain - FEMA map	<input type="checkbox"/> Yes <input checked="" type="checkbox"/> No

11

Temporary Pits, Emergency Pits, and Below-grade Tanks Permit Application Attachment Checklist: Subsection B of 19 15.17.9 NMAC**Instructions:** Each of the following items must be attached to the application. Please indicate, by a check mark in the box, that the documents are attached.

- ☒ Hydrogeologic Report (Below-grade Tanks) - based upon the requirements of Paragraph (4) of Subsection B of 19.15 17.9 NMAC
- ☒ Hydrogeologic Data (Temporary and Emergency Pits) - based upon the requirements of Paragraph (2) of Subsection B of 19 15 17.9 NMAC
- ☒ Siting Criteria Compliance Demonstrations - based upon the appropriate requirements of 19 15 17 10 NMAC
- ☒ Design Plan - based upon the appropriate requirements of 19 15 17 11 NMAC
- ☒ Operating and Maintenance Plan - based upon the appropriate requirements of 19.15.17.12 NMAC
- ☒ Closure Plan (Please complete Boxes 14 through 18, if applicable) - based upon the appropriate requirements of Subsection C of 19 15 17.9 NMAC and 19.15 17 13 NMAC

☐ Previously Approved Design (attach copy of design) API Number _____ or Permit Number _____

12.

Closed-loop Systems Permit Application Attachment Checklist: Subsection B of 19 15 17.9 NMAC**Instructions:** Each of the following items must be attached to the application. Please indicate, by a check mark in the box, that the documents are attached.

- ☐ Geologic and Hydrogeologic Data (only for on-site closure) - based upon the requirements of Paragraph (3) of Subsection B of 19 15 17.9
- ☐ Siting Criteria Compliance Demonstrations (only for on-site closure) - based upon the appropriate requirements of 19.15 17.10 NMAC
- ☐ Design Plan - based upon the appropriate requirements of 19 15 17 11 NMAC
- ☐ Operating and Maintenance Plan - based upon the appropriate requirements of 19 15 17 12 NMAC
- ☐ Closure Plan (Please complete Boxes 14 through 18, if applicable) - based upon the appropriate requirements of Subsection C of 19.15 17.9 NMAC and 19 15 17.13 NMAC

☐ Previously Approved Design (attach copy of design) API Number. _____

☐ Previously Approved Operating and Maintenance Plan API Number: _____ (Applies only to closed-loop system that use above ground steel tanks or haul-off bins and propose to implement waste removal for closure)

13

Permanent Pits Permit Application Checklist: Subsection B of 19 15 17.9 NMAC**Instructions:** Each of the following items must be attached to the application. Please indicate, by a check mark in the box, that the documents are attached.

- ☐ Hydrogeologic Report - based upon the requirements of Paragraph (1) of Subsection B of 19 15 17.9 NMAC
- ☐ Siting Criteria Compliance Demonstrations - based upon the appropriate requirements of 19 15 17 10 NMAC
- ☐ Climatological Factors Assessment
- ☐ Certified Engineering Design Plans - based upon the appropriate requirements of 19 15 17 11 NMAC
- ☐ Dike Protection and Structural Integrity Design - based upon the appropriate requirements of 19 15 17 11 NMAC
- ☐ Leak Detection Design - based upon the appropriate requirements of 19 15 17.11 NMAC
- ☐ Liner Specifications and Compatibility Assessment - based upon the appropriate requirements of 19 15 17 11 NMAC
- ☐ Quality Control/Quality Assurance Construction and Installation Plan
- ☐ Operating and Maintenance Plan - based upon the appropriate requirements of 19.15 17 12 NMAC
- ☐ Freeboard and Overtopping Prevention Plan - based upon the appropriate requirements of 19.15.17.11 NMAC
- ☐ Nuisance or Hazardous Odors, including H₂S, Prevention Plan
- ☐ Emergency Response Plan
- ☐ Oil Field Waste Stream Characterization
- ☐ Monitoring and Inspection Plan
- ☐ Erosion Control Plan
- ☐ Closure Plan - based upon the appropriate requirements of Subsection C of 19.15 17.9 NMAC and 19 15 17.13 NMAC

14.

Proposed Closure: 19 15 17 13 NMAC**Instructions:** Please complete the applicable boxes, Boxes 14 through 18, in regards to the proposed closure plan.

Type: ☒ Drilling ☐ Workover ☐ Emergency ☐ Cavitation ☐ P&A ☐ Permanent Pit ☐ Below-grade Tank ☐ Closed-loop System

☐ Alternative

Proposed Closure Method ☐ Waste Excavation and Removal

☐ Waste Removal (Closed-loop systems only)

☒ On-site Closure Method (Only for temporary pits and closed-loop systems)

☒ In-place Burial ☐ On-site Trench Burial

☐ Alternative Closure Method (Exceptions must be submitted to the Santa Fe Environmental Bureau for consideration)

15

Waste Excavation and Removal Closure Plan Checklist: (19 15 17.13 NMAC) **Instructions:** Each of the following items must be attached to the closure plan. Please indicate, by a check mark in the box, that the documents are attached.

- ☐ Protocols and Procedures - based upon the appropriate requirements of 19 15 17 13 NMAC
- ☐ Confirmation Sampling Plan (if applicable) - based upon the appropriate requirements of Subsection F of 19 15 17 13 NMAC
- ☐ Disposal Facility Name and Permit Number (for liquids, drilling fluids and drill cuttings)
- ☐ Soil Backfill and Cover Design Specifications - based upon the appropriate requirements of Subsection H of 19 15 17 13 NMAC
- ☐ Re-vegetation Plan - based upon the appropriate requirements of Subsection I of 19 15 17 13 NMAC
- ☐ Site Reclamation Plan - based upon the appropriate requirements of Subsection G of 19 15 17 13 NMAC

16

Waste Removal Closure For Closed-loop Systems That Utilize Above Ground Steel Tanks or Haul-off Bins Only: (19 15 17 13.D NMAC)

Instructions: Please identify the facility or facilities for the disposal of liquids, drilling fluids and drill cuttings. Use attachment if more than two facilities are required.

Disposal Facility Name _____ Disposal Facility Permit Number _____
 Disposal Facility Name: _____ Disposal Facility Permit Number: _____

Will any of the proposed closed-loop system operations and associated activities occur on or in areas that *will not* be used for future service and operations?

☐ Yes (If yes, please provide the information below) ☐ No

Required for impacted areas which will not be used for future service and operations

- ☐ Soil Backfill and Cover Design Specifications - based upon the appropriate requirements of Subsection H of 19 15.17 13 NMAC
☐ Re-vegetation Plan - based upon the appropriate requirements of Subsection I of 19 15.17.13 NMAC
☐ Site Reclamation Plan - based upon the appropriate requirements of Subsection G of 19.15 17 13 NMAC

17

Siting Criteria (regarding on-site closure methods only): 19 15 17 10 NMAC

Instructions: Each siting criteria requires a demonstration of compliance in the closure plan. Recommendations of acceptable source material are provided below. Requests regarding changes to certain siting criteria may require administrative approval from the appropriate district office or may be considered an exception which must be submitted to the Santa Fe Environmental Bureau office for consideration of approval. Justifications and/or demonstrations of equivalency are required. Please refer to 19.15.17.10 NMAC for guidance.

Ground water is less than 50 feet below the bottom of the buried waste - NM Office of the State Engineer - iWATERS database search; USGS, Data obtained from nearby wells	<input type="checkbox"/> Yes <input checked="" type="checkbox"/> No <input type="checkbox"/> NA
Ground water is between 50 and 100 feet below the bottom of the buried waste - NM Office of the State Engineer - iWATERS database search, USGS, Data obtained from nearby wells	<input type="checkbox"/> Yes <input checked="" type="checkbox"/> No <input type="checkbox"/> NA
Ground water is more than 100 feet below the bottom of the buried waste - NM Office of the State Engineer - iWATERS database search, USGS, Data obtained from nearby wells	<input checked="" type="checkbox"/> Yes <input type="checkbox"/> No <input type="checkbox"/> NA
Within 300 feet of a continuously flowing watercourse, or 200 feet of any other significant watercourse or lakebed, sinkhole, or playa lake (measured from the ordinary high-water mark) - Topographic map, Visual inspection (certification) of the proposed site	<input type="checkbox"/> Yes <input checked="" type="checkbox"/> No
Within 300 feet from a permanent residence, school, hospital, institution, or church in existence at the time of initial application - Visual inspection (certification) of the proposed site; Aerial photo, Satellite image	<input type="checkbox"/> Yes <input checked="" type="checkbox"/> No
Within 500 horizontal feet of a private, domestic fresh water well or spring that less than five households use for domestic or stock watering purposes, or within 1000 horizontal feet of any other fresh water well or spring, in existence at the time of initial application - NM Office of the State Engineer - iWATERS database, Visual inspection (certification) of the proposed site	<input type="checkbox"/> Yes <input checked="" type="checkbox"/> No
Within incorporated municipal boundaries or within a defined municipal fresh water well field covered under a municipal ordinance adopted pursuant to NMSA 1978, Section 3-27-3, as amended - Written confirmation or verification from the municipality; Written approval obtained from the municipality	<input type="checkbox"/> Yes <input checked="" type="checkbox"/> No
Within 500 feet of a wetland - US Fish and Wildlife Wetland Identification map, Topographic map, Visual inspection (certification) of the proposed site	<input type="checkbox"/> Yes <input checked="" type="checkbox"/> No
Within the area overlying a subsurface mine - Written confirmation or verification or map from the NM EMNRD-Mining and Mineral Division	<input type="checkbox"/> Yes <input checked="" type="checkbox"/> No
Within an unstable area - Engineering measures incorporated into the design, NM Bureau of Geology & Mineral Resources, USGS, NM Geological Society, Topographic map	<input type="checkbox"/> Yes <input checked="" type="checkbox"/> No
Within a 100-year floodplain. - FEMA map	<input type="checkbox"/> Yes <input checked="" type="checkbox"/> No

18.

On-Site Closure Plan Checklist: (19 15.17.13 NMAC) **Instructions:** Each of the following items must be attached to the closure plan. Please indicate, by a check mark in the box, that the documents are attached.

- ☒ Siting Criteria Compliance Demonstrations - based upon the appropriate requirements of 19.15 17 10 NMAC
☒ Proof of Surface Owner Notice - based upon the appropriate requirements of Subsection F of 19 15 17 13 NMAC
☐ Construction/Design Plan of Burial Trench (if applicable) based upon the appropriate requirements of 19 15 17 11 NMAC
☒ Construction/Design Plan of Temporary Pit (for in-place burial of a drying pad) - based upon the appropriate requirements of 19 15 17 11 NMAC
☒ Protocols and Procedures - based upon the appropriate requirements of 19 15 17 13 NMAC
☒ Confirmation Sampling Plan (if applicable) - based upon the appropriate requirements of Subsection F of 19 15 17 13 NMAC
☒ Waste Material Sampling Plan - based upon the appropriate requirements of Subsection F of 19.15.17 13 NMAC
☒ Disposal Facility Name and Permit Number (for liquids, drilling fluids and drill cuttings or in case on-site closure standards cannot be achieved)
☒ Soil Cover Design - based upon the appropriate requirements of Subsection H of 19.15.17.13 NMAC
☒ Re-vegetation Plan - based upon the appropriate requirements of Subsection I of 19.15.17.13 NMAC
☒ Site Reclamation Plan - based upon the appropriate requirements of Subsection G of 19 15 17.13 NMAC

19.

Operator Application Certification:

I hereby certify that the information submitted with this application is true, accurate and complete to the best of my knowledge and belief

Name (Print) Ben Mitchell Title Regulatory Specialist
 Signature *Ben Mitchell* Date 5/26/2011
 e-mail address ben.mitchell@williams.com Telephone 505-634-4206

20.

OCD Approval: ☒ Permit Application (including closure plan) ☐ Closure Plan (only) ☐ OCD Conditions (see attachment)

OCD Representative Signature: *Joseph D. Kelly* Approval Date: 6/15/2011

Title: Compliance Officer OCD Permit Number: _____

21.

Closure Report (required within 60 days of closure completion): Subsection K of 19 15 17 13 NMAC

Instructions: Operators are required to obtain an approved closure plan prior to implementing any closure activities and submitting the closure report. The closure report is required to be submitted to the division within 60 days of the completion of the closure activities. Please do not complete this section of the form until an approved closure plan has been obtained and the closure activities have been completed.

☐ Closure Completion Date: _____

22.

Closure Method:

☐ Waste Excavation and Removal ☐ On-Site Closure Method ☐ Alternative Closure Method ☐ Waste Removal (Closed-loop systems only)
☐ If different from approved plan, please explain

23.

Closure Report Regarding Waste Removal Closure For Closed-loop Systems That Utilize Above Ground Steel Tanks or Haul-off Bins Only:

Instructions: Please identify the facility or facilities for where the liquids, drilling fluids and drill cuttings were disposed. Use attachment if more than two facilities were utilized.

Disposal Facility Name _____ Disposal Facility Permit Number _____

Disposal Facility Name _____ Disposal Facility Permit Number _____

Were the closed-loop system operations and associated activities performed on or in areas that *will not* be used for future service and operations?

☐ Yes (If yes, please demonstrate compliance to the items below) ☐ No

Required for impacted areas which will not be used for future service and operations

- ☐ Site Reclamation (Photo Documentation)
☐ Soil Backfilling and Cover Installation
☐ Re-vegetation Application Rates and Seeding Technique

24.

Closure Report Attachment Checklist: *Instructions: Each of the following items must be attached to the closure report. Please indicate, by a check mark in the box, that the documents are attached.*

- ☐ Proof of Closure Notice (surface owner and division)
☐ Proof of Deed Notice (required for on-site closure)
☐ Plot Plan (for on-site closures and temporary pits)
☐ Confirmation Sampling Analytical Results (if applicable)
☐ Waste Material Sampling Analytical Results (required for on-site closure)
☐ Disposal Facility Name and Permit Number
☐ Soil Backfilling and Cover Installation
☐ Re-vegetation Application Rates and Seeding Technique
☐ Site Reclamation (Photo Documentation)

On-site Closure Location Latitude _____ Longitude _____ NAD ☐ 1927 ☐ 1983

25.

Operator Closure Certification:

I hereby certify that the information and attachments submitted with this closure report is true, accurate and complete to the best of my knowledge and belief. I also certify that the closure complies with all applicable closure requirements and conditions specified in the approved closure plan

Name (Print) _____ Title _____

Signature _____ Date _____

e-mail address _____ Telephone _____

District I
1625 N. French Dr., Hobbs, NM 88240

District II
1301 W Grand Avenue, Artesia, NM 88210

District III
1000 Rio Brazos Rd., Aztec, NM 87410

District IV
1220 S St Francis Dr., Santa Fe, NM 87505

State of New Mexico
Energy, Minerals & Natural Resources Department

OIL CONSERVATION DIVISION
1220 South St. Francis Dr.
Santa Fe, NM 87505

Form C-102
Revised October 12, 2005
Instructions on back
Submit to Appropriate District Office
State Lease - 4 Copies
Fee Lease - 3 Copies

☐ AMENDED REPORT

WELL LOCATION AND ACREAGE DEDICATION PLAT

*API Number	*Pool Code 72319 / 71599	*Pool Name BLANCO MESAVERDE / BASIN DAKOTA
*Property Code 17033	*Property Name ROSA UNIT	*Well Number 154C
*OGRID No. 120782	*Operator Name WILLIAMS PRODUCTION COMPANY	*Elevation 6355'

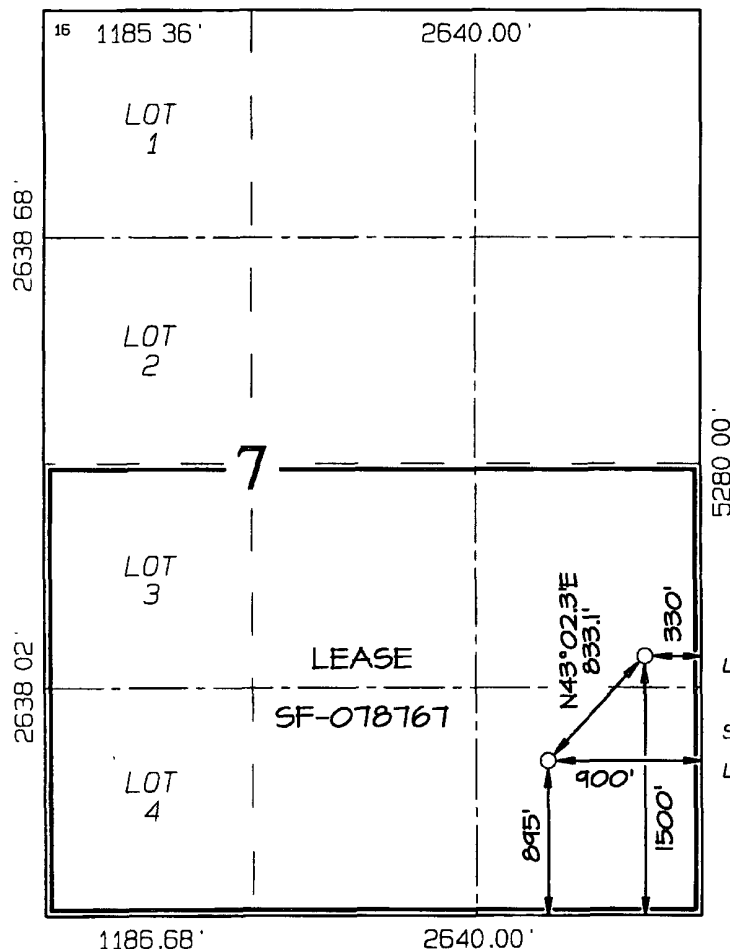
10 Surface Location

UL or lot no	Section	Township	Range	Lot Idn	Feet from the	North/South line	Feet from the	East/West line	County
P	7	31N	5W		895	SOUTH	900	EAST	RIO ARriba

11 Bottom Hole Location If Different From Surface

UL or lot no	Section	Township	Range	Lot Idn	Feet from the	North/South line	Feet from the	East/West line	County
I	7	31N	5W		1500	SOUTH	330	EAST	RIO ARriba
12 Dedicated Acres 231.90 Acres - (S/2)					13 Joint or Infill	14 Consolidation Code	15 Order No		

NO ALLOWABLE WILL BE ASSIGNED TO THIS COMPLETION UNTIL ALL INTERESTS HAVE BEEN CONSOLIDATED OR A NON-STANDARD UNIT HAS BEEN APPROVED BY THE DIVISION



17 OPERATOR CERTIFICATION

I hereby certify that the information contained herein is true and complete to the best of my knowledge and belief, and that this organization either owns a working interest or unleased mineral interest in the land including the proposed bottom-hole location or has a right to drill this well at this location pursuant to a contract with an owner of such a mineral or working interest, or to a voluntary pooling agreement or a compulsory pooling order heretofore entered by the division

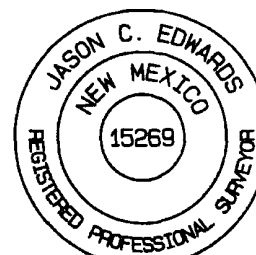
B. Mitchell 5/25/2011
Signature Date
Ben Mitchell
Printed Name

18 SURVEYOR CERTIFICATION

I hereby certify that the well location shown on this plat was plotted from field notes of actual surveys made by me or under my supervision, and that the same is true and correct to the best of my belief

Survey Date, SEPTEMBER 9, 2010

Signature and Seal of Professional Surveyor



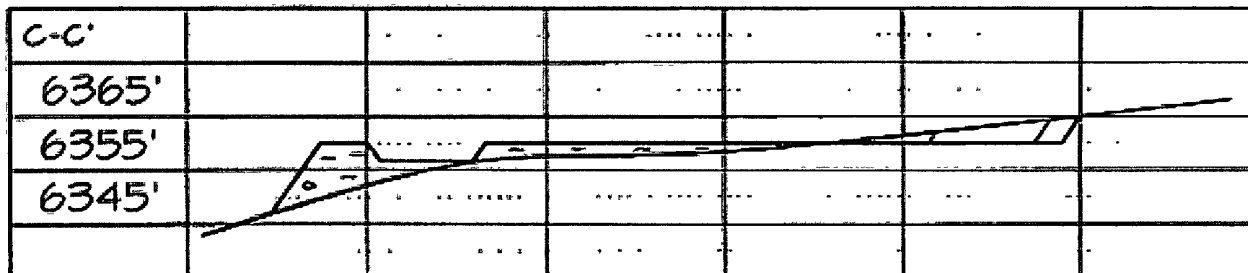
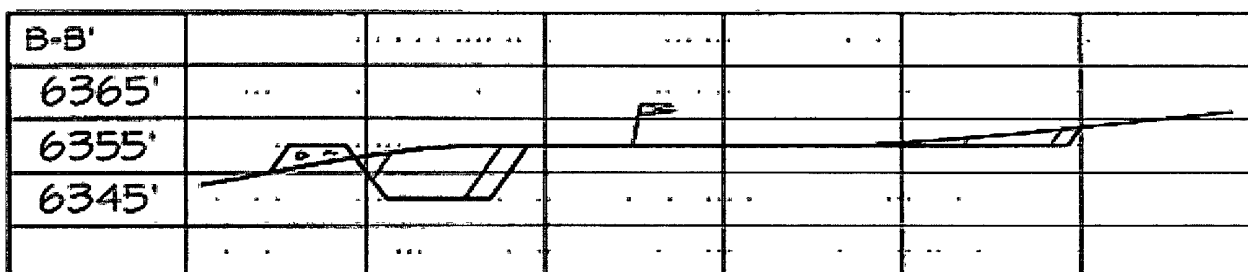
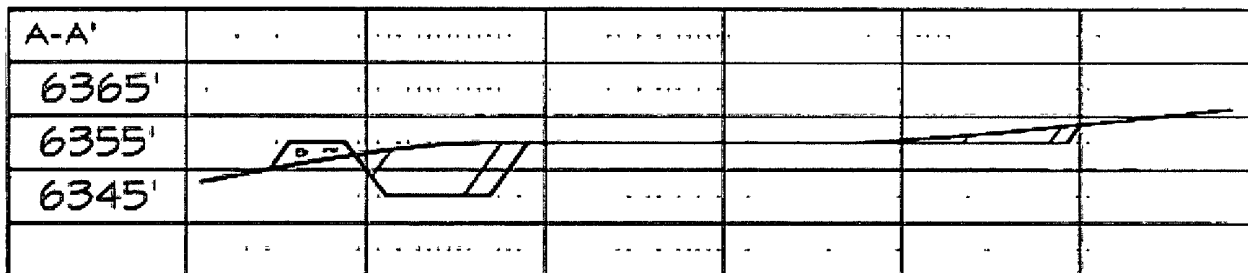
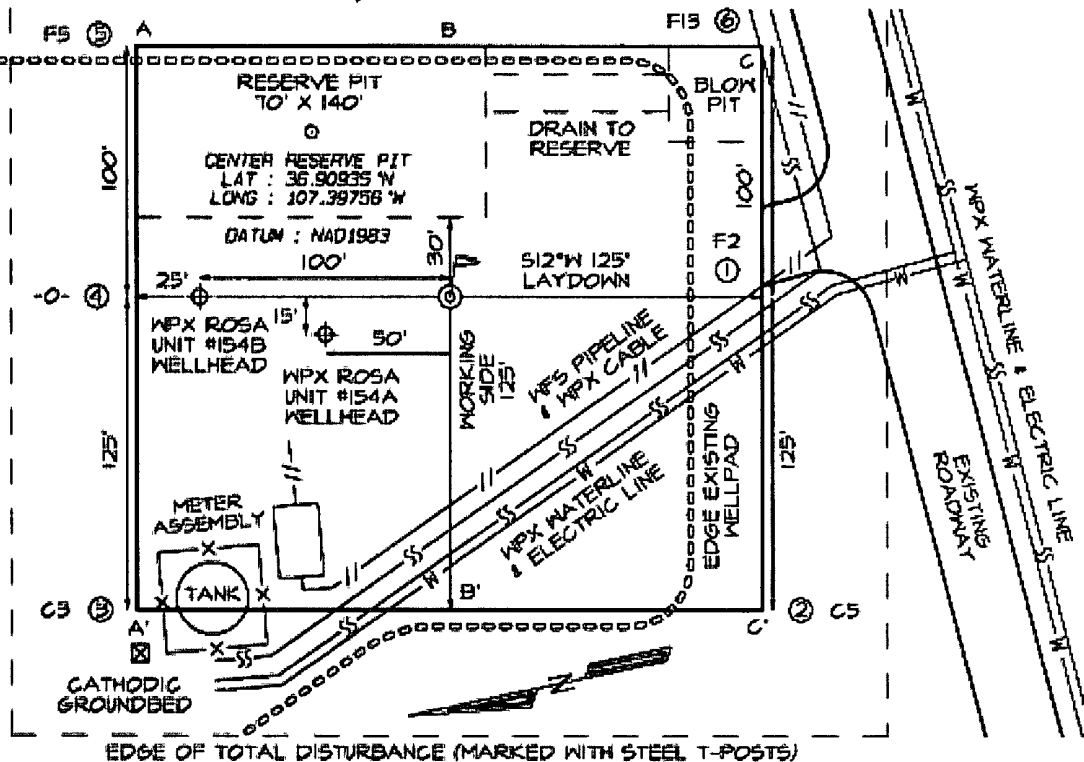
JASON C. EDWARDS
Certificate Number 15269

WILLIAMS PRODUCTION COMPANY ROSA UNIT #154C

895' FSL & 900' FEL, SECTION 7, T31N, R5W, NMPM
RIO ARriba COUNTY, NEW MEXICO ELEVATION: 6355'

Steel T-Posts have been set to define the Edge of Disturbance
Limits which are 50' offset from the edge of the staked wellpad.

LATITUDE: 36.90824° N
LONGITUDE: 107.39781° W
DATUM: NAD1983



FILENAME: D12TPT

SHEET 2 OF 3

ACE SURVEYS, INC.

DRAWN BY: EDO

CHECKED BY: JCE

Hydrogeological Report
Williams Production Company, LLC
Rosa Unit #154C

Regional Hydrological Context

Referenced Well Location:

The referenced well and pit is located on Bureau of Land Management land within Farmington Field Office (FFO) management jurisdiction in Rio Arriba County, New Mexico. This site is positioned in the northeastern portion of the San Juan Basin, an asymmetrical syncline that extends from northwestern New Mexico into southwestern Colorado (Carson National Forest FEIS, 2008). Elevation of the referenced well is approximately 6355 feet MSL.

General Regional Groundwater Description:

As a portion of the San Juan Basin, the Jicarilla Ranger District is underlain by sandstone aquifers of the Colorado Plateau. The primary aquifer of potential concern at this location is the Uinta-Animas Aquifer, composed primarily of Lower Tertiary rocks in the San Juan Basin. The aquifer consists of the San Jose Formation; the underlying Animas formation and its lateral equivalent, the Nacimiento formation, and the Ojo Alamo Sandstone. The thickness of the Uinta-Animas aquifer generally increases toward the central part of the basin. In this region, the maximum thickness of the aquifer is approximately 3500 feet (USGS, 2001). This aquifer contains fresh to moderately saline water.

Groundwater generally flows toward the San Juan River and its tributaries, where it becomes alluvial groundwater or is discharged to stream flow. Additional information regarding the hydrogeologic setting can be found in the provided references.

Site Specific Information:

Surface Hydrology:	The pit is located on a recently drilled well location sloping to the north-northwest into Cabresto Canyon..
1st Water Bearing Formation:	San Jose, Tertiary
Formation Thickness:	Approximately 1,900 ft.
Underlying Formation:	Nacimiento, Tertiary
Depth to Groundwater:	Depth to groundwater is estimated at greater than 100 feet bgs. Within a one-mile radius of this location, there were no iWATERS wells with recorded water depth information. However, cathodic data associated with the Rosa Unit Nos. 48 (approximately 3,349 feet from pit), 371 & 61 (approximately 3,054 feet from pit), show depth to moisture at 140 to 180 feet (see Siting Criteria Map I for details)

References:

- Allen, Erin. Undated. Colorado Plateau Aquifers.
<http://academic.emporia.edu/schulmem/hydro/TERM%20PROJECTS/2007/Allen/Aquifer.html>.
- New Mexico Energy, Minerals and Natural Resources Department, Division of Mining and Minerals Database. 2010. Internet accessed January 2010.
- New Mexico Office of the State Engineer. 2010. iWaters database. Internet accessed March 2010.
- New Mexico WQCC. 2005. State of New Mexico Water Quality Act and the Water Control Commission Regulations
- United States Department of Agriculture, Forest Service. 2008. Final Environmental Impact Statement for Surface Management of Gas Leasing and Development. Jicarilla Ranger District, Carson National Forest, Rio Arriba County, New Mexico.
- United States Department of the Interior. Bureau of Land Management. 2003. Final Farmington Resource Management Plan and Final Environmental Impact Statement. Farmington Field Office, Farmington, New Mexico.
- United States Geological Survey. 2001. Ground Water Atlas of the United States: Arizona, Colorado, New Mexico and Utah. USGS Publication HA 730-C; <http://capp.water.usgs.gov>.



New Mexico Office of the State Engineer **Water Column/Average Depth to Water**

No records found.

PLSS Search:

Township: 32N

Range: 06W

The data is furnished by the NMOSE/ISC and is accepted by the recipient with the expressed understanding that the OSE/ISC make no warranties, expressed or implied, concerning the accuracy, completeness, reliability, usability, or suitability for any particular purpose of the data.

3/16/11 2:46 PM

Page 1 of 1

WATER COLUMN/ AVERAGE
DEPTH TO WATER



New Mexico Office of the State Engineer

Water Column/Average Depth to Water

No records found.

PLSS Search:

Township: 32N

Range: 06W

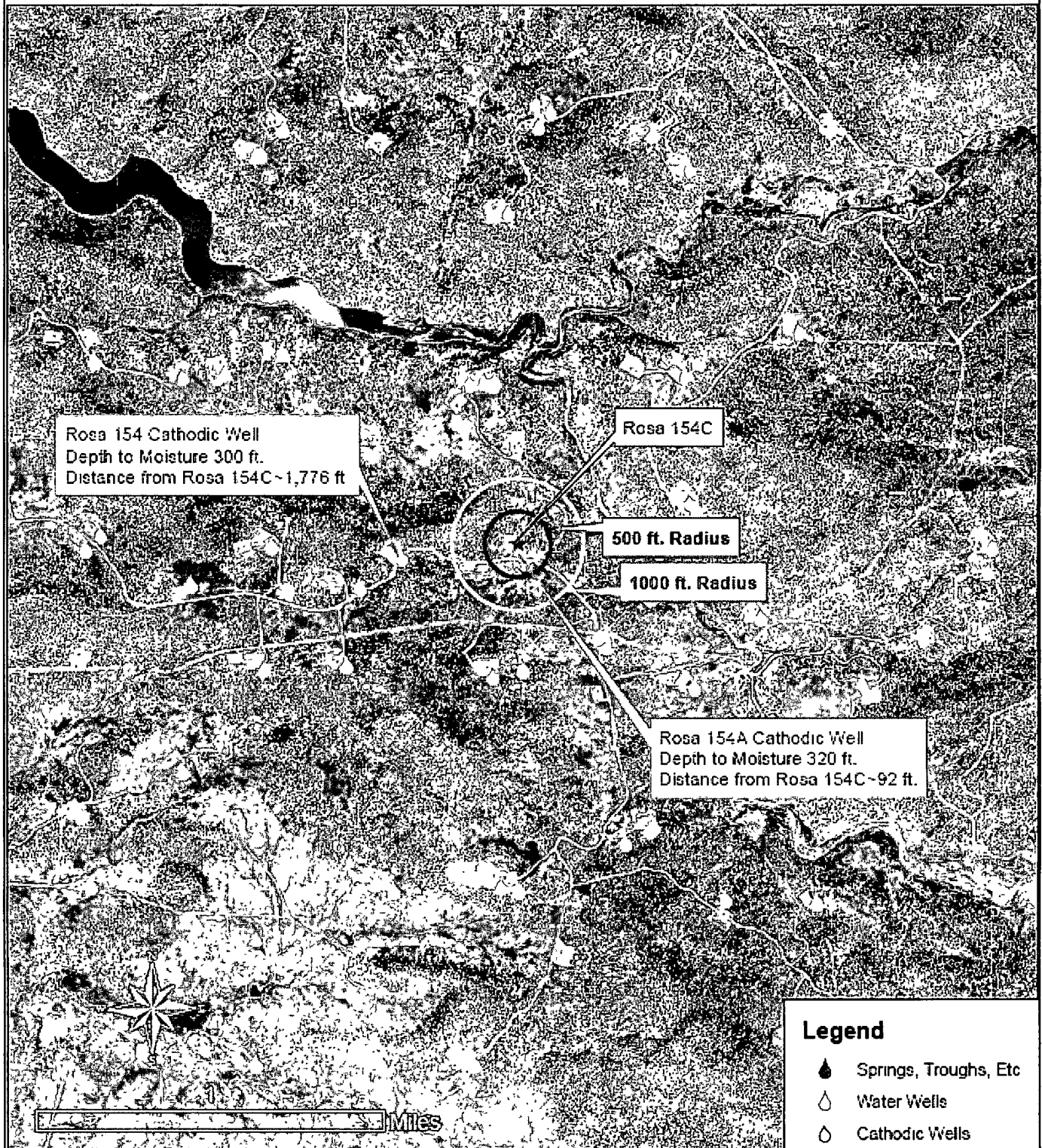
The data is furnished by the NMOSE/ISC and is accepted by the recipient with the expressed understanding that the OSE/ISC make no warranties, expressed or implied, concerning the accuracy, completeness, reliability, usability, or suitability for any particular purpose of the data.

3/16/11 2:46 PM

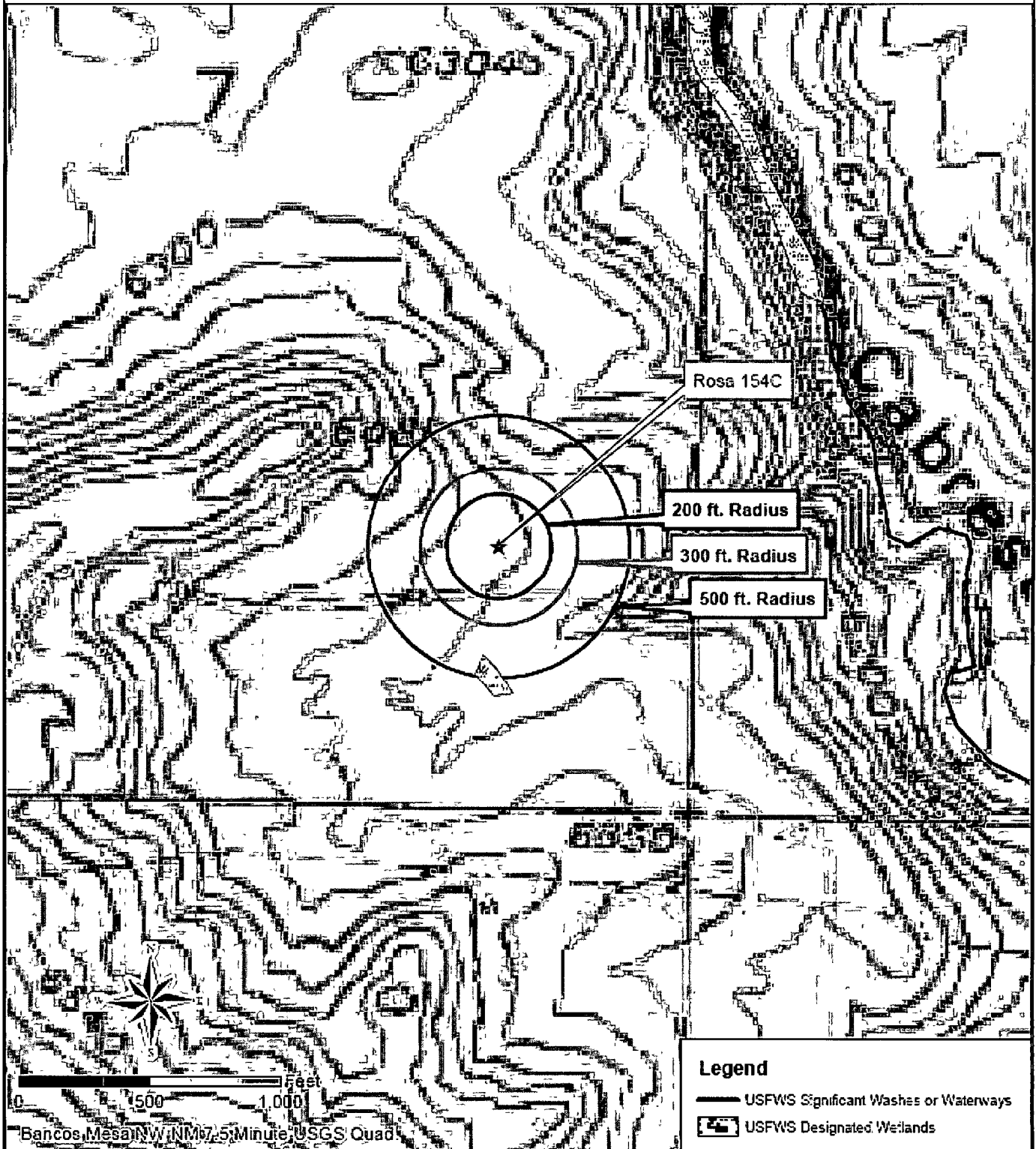
Page 1 of 1

WATER COLUMN/ AVERAGE
DEPTH TO WATER

Siting Criteria Map I
Water Wells, Cathodic Wells, & Springs
Williams Production Company, LLC
Proposed Rosa Unit No. 154C
T31N. R05W, Section 7 NMPM
Rio Arriba County, New Mexico



Siting Criteria Map II
Topographic Features
Williams Production Company, LLC
Rosa Unit No. 154C
T31N. R05W, Section 7 NMPM
Rio Arriba County, New Mexico

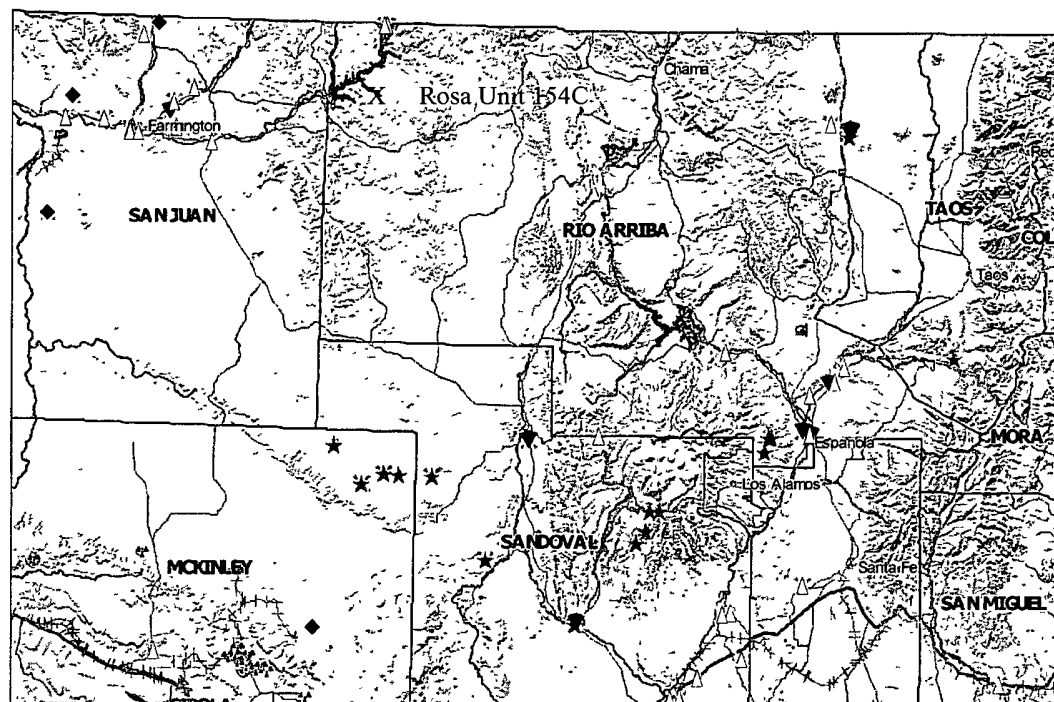


MMQonline Public Version

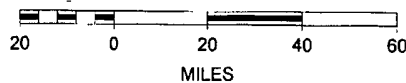
Mines, Mills & Quarries Commodity Groups

-  Aggregate & Stone Mines
-  Coal Mines
-  Industrial Minerals Mines
-  Industrial Minerals Mills
-  Metal Mines and Mill Concentrate
-  Potash Mines & Refinerles
-  Smelters & Refinery Ops.
-  Uranium Mines
-  Uranium Mills

Population



SCALE 1 : 2,203,053



FEMA Map – 100-Year Floodplain:

As this location is within Carson National Forest, no FEMA maps are available. However, ortho-photographic and topographic maps, and an on site investigation indicate that this location is not within a floodplain.

Siting Criteria Compliance Demonstrations:

The Rosa Unit #154C well is not located in an unstable area. The location is not situated over a mine or a steep slope. Excavated pit material will not be located within 300 feet of a continuously flowing water course or within 200 feet of any other significant water course, lakebed, sinkhole, or playa lake (see Siting Criteria Map II). The site is not within 500 feet of any reported riparian areas or wetlands; within 500 feet of any private, domestic fresh water well or spring, or within 1000 feet of any other fresh water well or spring (see Siting Criteria Map I). The proposed pit will not be within any incorporated municipal boundaries or defined municipal freshwater well field covered under a municipal ordinance adopted pursuant to NMSA 1978, Section 3-27-3, as amended. The location of the proposed pit is not within 300 feet of any permanent residence, school, hospital, institution, or church.

Williams Production Co., LLC
San Juan Basin: New Mexico Assets
Temporary Pit Design and Construction Plan
Drilling/Completion and Workover

In accordance with Rule 19.15.17 NMAC, the following plan describes the general design and construction (D&C) of temporary pits on Williams Production Co, LLC (WPX) locations in the San Juan Basin of New Mexico. This is WPX's standard procedure for all temporary pits to be utilized for the drilling, completion and/or workover of oil and gas wells operated by WPX. For those temporary pits which do not conform to this standard plan, a separate well specific D&C plan will be developed and utilized.

General Plan Requirements:

1. WPX will design and construct a temporary pit to contain liquids and solids associated with drilling, completion and workover of oil and gas wells which will prevent contamination of fresh water resources and protect public health and the environment.
2. Prior to excavation of the pit, topsoil will be stripped and stockpiled within the construction zone for later use during restoration.
3. WPX will post a well sign, not less than 12" by 24", on the well site prior to construction of the temporary pit. This sign will list the operator on record, the location of the well site by unit letter/section/township/range, and emergency telephone number(s).
4. WPX shall construct all new fences utilizing 48" steel mesh field-fence (hogwire) on the bottom with a single strand of barbed wire on top. T-posts will be installed every 12 feet and corners shall be anchored utilizing a secondary T-post or similar bracing. Temporary pits will be fenced at all times excluding drilling/completion and/or workover operations when the rig is present on site, at which time the "front" side of the fence will be temporarily removed for operational purposes.
5. WPX shall construct the temporary pit so that the foundation and interior slopes are firm and free of rocks, debris, sharp edges or irregularities to meet manufacturers' specifications and potential liner failure.
6. WPX shall construct the pit so that the slopes are no steeper than two horizontal to one vertical. Where steeper slopes are required due to surface owner and right-a-way restriction, an engineers certification of stability will be provided with the well pit application.
7. Pit well will be walked down by a crawler type tractor following construction and prior to liner installation.
8. All temporary pits will be lined with a 20-mil, string reinforced, LLDPE liner, complying with EPA SW-846 method 9090A requirements.
9. Geotextile will be installed beneath the liner when rocks, debris, sharp objects or irregularities can not be avoided.
10. All liners will be anchored in the bottom of a compacted earth-filled trench consistent with manufacturer's specifications and at least 18 inches deep.
11. WPX will minimize liner seams and orient them up and down, not across slope faces. Factory seams will be used whenever possible. Field seams will be overlapped per manufacturers' specifications. WPX will minimize the number of field seams in corners and irregularly shaped areas.
12. The liner shall be protected from any fluid force or mechanical damage through the use of mud pit slides (secondary liner placed over the primary liner), and/or a manifold system.
13. The pit shall be protected from run-on by construction of diversion ditches around the location or around the perimeter of the pit in as necessary.
14. The volume of the pit shall not exceed 10 acre-feet, including freeboard
15. Temporary blow pits will be constructed to allow gravity flow to discharge into the lined reserve pit.
16. Only the upper portion of the blow pit will be unlined as allowed in the Rule 19.15.17.11.F(11) NMAC.

17. WPX will modify this design if field and/or operating conditions do not effectively allow drainage of the blow pit and freestanding liquids pose a potential concern.

Williams Production Co., LLC
San Juan Basin: New Mexico Assets
Temporary Pit Maintenance & Operating Plan
Drilling/Completion and Workover

In accordance with Rule 19.15.17 NMAC, the following plan describes the general operations and maintenance (O&M) of temporary pits on Williams Production Co, LLC (WPX) locations in the San Juan Basin of New Mexico. This is WPX's standard procedure for all temporary pits to be utilized for the drilling, completion and/or workover of oil and gas wells operated by WPX. For those temporary pits which do not conform to this standard O&M plan, a separate well specific O&M plan will be developed and utilized.

General Plan Requirements:

1. WPX will operate and maintain a temporary pit to contain liquids and solids associated with drilling, completion and workover of oil and gas wells which will prevent contamination of fresh water resources and protect public health and the environment.
2. WPX will to the extent practical conserve drilling fluids for reuse by transferring liquids to pits ahead of the rigs. All other fluids will be disposed by evaporation or transport to Basin Disposal, Inc in Bloomfield, New Mexico (Permit # NM-01-005).
3. WPX shall maintain at least two (2) feet of vertical freeboard for a temporary pit.
4. WPX shall remove all free liquids from a temporary pit within 30 days from the date the drilling or workover rig is released.
5. Only fluids and solids generated during the drilling/completion/workover process may be discharged into a temporary pit. Other miscellaneous solid waste or debris will not be allowed.
6. WPX will not discharge or store any hazardous waste as defined under RCRA 40CFR 261 and 19.15.1.7.W(3) NMA in any temporary pit.
7. If any pit liner's integrity is compromised, or if any penetration of the liner occurs:
 - a. Above the liquid's surface, WPX shall repair the damage or replace the liner as necessary. WPX will notify the NMOCD Aztec District Office by phone or email within 48-hours of discovery.
 - b. Leak below the liquid's surface, WPX shall suspend operations, remove all liquids above the damaged liner within 48 hours, and repair the damage or replace the liner. WPX will notify and report to NMOCD as follows:
 - i. If the release is less than 25 bbls, the Aztec District Office by phone or email within 48-hours of discovery and repair.
 - ii. If the release is suspected to be greater than 25 bbls, the Aztec District Office and the Environmental Bureau Chief by phone for immediate verbal notification pursuant to 19.15.3.116.B (1)(d).
 - c. Written Spill/Release reports will be submitted on Form C-141 per 19.15.3.116.C NMAC within 15 days to the Aztec District Office.
8. The liner shall be protected from any fluid force or mechanical damage through the use of mud pit slides (secondary liner placed over the primary liner), and/or a manifold system.
9. Diversion ditches, around the location or around the perimeter of the pit, shall be maintained as protection from run-on.
10. WPX shall immediately remove any visible layer of oil from the surface of a temporary pit following cessation of drilling/completion/workover operations. Oil absorbent booms will be utilized to contain and remove oil. An oil absorbent boom will stored on-site until the pit is covered.
11. WPX will inspect the temporary pits as follows to ensure compliance with this plan:
 - a. Daily during drilling or workover operations. Inspections will be included with the IADC reports.
 - b. Weekly as long as liquids remain in the pit. Electronic copies of the inspections will be kept at the WPX San Juan Basin office.
 - c. Copies of the inspections will be filed with the NMOCD Aztec District office upon pit closure.

12. WPX shall remove all free liquids from a blow/flare (cavitation) pit within 48 hours after completing operations. WPX may request additional time to remove liquids from the Aztec District office if it is not feasible to meet the 48 hour requirement.

Williams Production Co., LLC
San Juan Basin: New Mexico Assets
Temporary Pit In-place Closure Plan
Drilling/Completion and Workover
(Groundwater >100 feet bgs)

In accordance with Rule 19.15.17.13 NMAC, the following plan describes the general in-place closure requirements of temporary pits on Williams Production Co, LLC (WPX) locations in the San Juan Basin of New Mexico. This is WPX's standard procedure for all temporary pits to be utilized for the drilling, completion and/or workovers of oil and gas wells operated by WPX. For those temporary pits which do not conform to this standard closure plan, a separate well/pit-specific closure plan will be developed and utilized.

All closure activities will include proper documentation and will be submitted to OCD within 60 days of the pit closure on a Closure Report using Division Form C-144. The Report will include the following:

- Details on Capping and Covering, where applicable
- Plot Plan (Pit Diagram)
- Inspection reports
- Sampling Results
- Division Form C-105: *WELL COMPLETION OR RECOMPLETION REPORT AND LOG*
- Copy of Deed Notice filed with the County Clerk (formatted to meet County requirements)

General Plan Requirements:

1. All free-standing liquids will be removed from the pit at the start of the closure process. Liquids will be removed in a manner that the appropriate District Office approves including: recycled, reused, reclaimed, evaporated, and/or disposed of in a Division-approved facility. Once all free liquids are removed, the sludge will be stabilized by one of the following methods depending on equipment availability: blending with clean stockpiled soils or dewatering using a Bowl Decanter Centrifuge, then blending with clean stockpiles soils.
2. The preferred method of closure for all temporary pits will be on-site closure by in-place burial, provided all the criteria in 19.15.17.13.B are met.
3. The surface owner shall be notified of WPX's proposed closure plan using a means that provides proof of notice (i.e. certified mail/return receipt requested).
4. Within six months of the "rig-off" status occurring, WPX will ensure that the temporary pit is covered and recontoured, and that reseeding is in progress.
5. Notice of Closure will be given to the Aztec District office between 72 hours and one week of the scheduled closure via email or phone. The notification of closure will include the following:
 - a. Operator's Name (WPX)
 - b. Well Name and API Number
 - c. Location (USTR)
6. The pit liner shall be removed above "mud level" after stabilization. Removal of the liner will consist of manually or mechanically cutting the liner at the mud level and removing all remaining liner. Care will be taken to remove "all" of the liner (i.e. anchored material). All excessive liner will be disposed of at a licensed disposal facility (probably San Juan Regional Landfill, operated by Waste Management under NMED Permit SWM-052426).

7. A five-point composite sample will be taken of the pit using sampling tools; all samples will be tested per 19.15.17.13(B)(1)(b) NMAC. In the event that the criteria are not met (See Table 1), all contents will be handled per 19.15.17.13(B)(1)(a) (i.e. dig and haul to a Division-approved facility). Approval to haul will be requested of the Aztec District office prior to initiation.

Table 1: Closure Criteria for Temporary Pits in Non-sensitive Areas

Components	Testing Methods	Closure Limits (mg/Kg)
Benzene	EPA SW-846 Method 8021B or 8260B	0.2
BTEX	EPA SW-846 Method 8021B or 8260B	50
TPH	EPA SW-846 Method 8015 M(Full Range)* or Method 418.1	2500
GRO/DRO	EPA SW-846 Method 8015M (GRO/DRO)	500
Chlorides	EPA SW-846 Method 300.1	1000

* Preferred method

8. Upon completion of solidification and testing, the pit area will be backfilled with non-waste, earthen material compacted to native conditions to enable effective revegetation for successful evapotranspiration. A minimum of four feet of cover will be used, including replacement of one foot of suitable material to establish vegetation, or the background thickness of topsoil, whichever is greater.
9. Following cover, the site will be recontoured to meet the Surface Management Agency or surface owner requirements. Re-contouring will attempt to match fit, shape, line form, and texture of the surrounding geography. Re-shaping will provide drainage control, prevent ponding, and minimize erosion. Natural drainages will be unimpeded and stormwater Best Management Practices (BMPs) will be used to aid in soil stabilization and protect surface water quality.
10. Notification will be sent to the Aztec District office when the reclaimed area is seeded.
11. WPX shall seed the disturbed areas the first growing season after the pit is covered. Seeding will be accomplished via drilling on the contour whenever practical, or by other Division-approved methods. Vegetative cover will equal 70% of the native perennial vegetative cover (un-impacted), consisting of at least three native plant species, including at least one grass, but not including noxious weeds. Cover will be maintained through two successive growing seasons. Repeat seeding or planting will be continued until successful vegetative growth occurs. *Note WPX assumes the seeding stipulations, including mix and seeding methods, specified by the Surface Management Agency (BLM, BOR, USFS, Tribal, etc.) or Landowner as part of a surface use agreement or APD are Division-approved methods unless notified by the Division of their unacceptability.*
12. Upon the abandonment of all wells on the pad, the temporary pit will be located with a steel marker no less than four inches in diameter, cemented in a hole three feet deep in the center of the on site burial. The marker will be flush with the ground to allow access of the active well pad and for safety concerns. The marker will include a threaded collar to be used for future abandonment. The top of the marker will contain a welded steel 12" square plate that indicates the on site burial of the temporary pit. The plate will be easily removable and a four-foot tall riser will be threaded into the top of the collar marker and welded around the base with the operations information at the time of all wells on the pad abandoned. The information will include Operator Name, Lease Name, Well Name and number, USTR, and an indicator that the marker is an onsite pit burial location.

UNITED STATES
DEPARTMENT OF THE INTERIOR
BUREAU OF LAND MANAGEMENT

FORM APPROVED
OMB No 1004-0137
Expires March 31, 2007

SUNDRY NOTICES AND REPORTS ON WELLS
***Do not use this form for proposals to drill or to re-enter an
abandoned well. Use Form 3160-3 (APD) for such proposals.***

SUBMIT IN TRIPLICATE – Other instructions on page 2.

1 Type of Well		5 Lease Serial No NMSF-078767
<input type="checkbox"/> Oil Well <input checked="" type="checkbox"/> Gas Well <input type="checkbox"/> Other		6 If Indian, Allottee or Tribe Name
2 Name of Operator Williams Production Company, LLC		7 If Unit of CA/Agreement, Name and/or No Rosa
3a Address PO Box 640 Aztec, NM 87410		8 Well Name and No Rosa Unit 154C
3b Phone No (include area code) 505-634-4206		9 API Well No 30-039-31054
4 Location of Well (Footage, Sec, T, R, M, or Survey Description) 895' FSL & 900' FEL Section 7, T31N, R5W		10 Field and Pool or Exploratory Area Blanco Mesa Verde / Basin Dakota
		11 Country or Parish, State Rio Arriba, NM

12 CHECK THE APPROPRIATE BOX(ES) TO INDICATE NATURE OF NOTICE, REPORT OR OTHER DATA

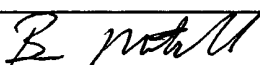
TYPE OF SUBMISSION	TYPE OF ACTION			
<input type="checkbox"/> Notice of Intent	<input type="checkbox"/> Acidize	<input type="checkbox"/> Deepen	<input type="checkbox"/> Production (Start/Resume)	<input type="checkbox"/> Water Shut-Off
<input checked="" type="checkbox"/> Subsequent Report	<input type="checkbox"/> Alter Casing	<input type="checkbox"/> Fracture Treat	<input type="checkbox"/> Reclamation	<input type="checkbox"/> Well Integrity
	<input type="checkbox"/> Casing Repair	<input type="checkbox"/> New Construction	<input type="checkbox"/> Recomplete	<input checked="" type="checkbox"/> Other Temp Pit Notification
	<input type="checkbox"/> Change Plans	<input type="checkbox"/> Plug and Abandon	<input type="checkbox"/> Temporarily Abandon	
<input type="checkbox"/> Final Abandonment Notice	<input type="checkbox"/> Convert to Injection	<input type="checkbox"/> Plug Back	<input type="checkbox"/> Water Disposal	

13 Describe Proposed or Completed Operation Clearly state all pertinent details, including estimated starting date of any proposed work and approximate duration thereof. If the proposal is to deepen directionally or recompleat horizontally, give subsurface locations and measured and true vertical depths of all pertinent markers and zones. Attach the Bond under which the work will be performed or provide the Bond No on file with BLM/BIA. Required subsequent reports must be filed within 30 days following completion of the involved operations. If the operation results in a multiple completion or recompleat in a new interval, a Form 3160-4 must be filed once testing has been completed. Final Abandonment Notices must be filed only after all requirements, including reclamation, have been completed and the operator has determined that the site is ready for final inspection.)

This correspondence is to notify the BLM that Williams Production is planning to use a temporary pit associated with the drilling and completion of the reference well and following discontinued use of the pit will close by onsite burial. The planned closure is consistent with the Surface Use Plan submitted with Williams APD.

This notice is to comply with the NMOCD Pit Rule 19.15.17 NMAC requirement to notify surface owners of the operator's intended closure method. If site conditions do not allow Williams to close in-place, we will provide your office with prior notice should the BLM have any concerns.

Please contact us if there are any questions or additional information is required

14 I hereby certify that the foregoing is true and correct Name (Printed/Typed) Ben Mitchell	Title Regulatory Specialist
Signature 	Date 5-25-11

THIS SPACE FOR FEDERAL OR STATE OFFICE USE

Approved by	Title	Date
Conditions of approval, if any, are attached. Approval of this notice does not warrant or certify that the applicant holds legal or equitable title to those rights in the subject lease which would entitle the applicant to conduct operations thereon	Office	

Title 18 U S C Section 1001 and Title 43 U S C Section 1212, make it a crime for any person knowingly and willfully to make to any department or agency of the United States any false, fictitious or fraudulent statements or representations as to any matter within its jurisdiction

(Instructions on page 2)