

1053511

RECEIVED

AUG 29 2011

DISTRICT I
1625 N. French Dr., Hobbs, N.M. 88240

DISTRICT II
1301 W. Grand Ave., Artesia, N.M. 88210

DISTRICT III
1000 Rio Brazos Rd., Aztec, N.M. 87410

DISTRICT IV
1220 South St. Francis Dr., Santa Fe, NM 87505

State of New Mexico
Energy, Minerals & Natural Resources Department

OIL CONSERVATION DIVISION
1220 South St. Francis Dr.
Santa Fe, NM 87505

Farmington Field Office
Bureau of Land Management

Form C-102
Revised July, 16, 2010
Submit one copy to appropriate
District Office

AMENDED REPORT

WELL LOCATION AND ACREAGE DEDICATION PLAT

¹ API Number 30-045-35246	² Pool Code 71629	³ Pool Name BASIN FRUITLAND COAL
⁴ Property Code 304703	⁵ Property Name MOHAVE	
⁷ OGRID No. 5380	⁸ Operator Name XTO ENERGY INC.	⁶ Well Number 1H
		⁹ Elevation 5768'

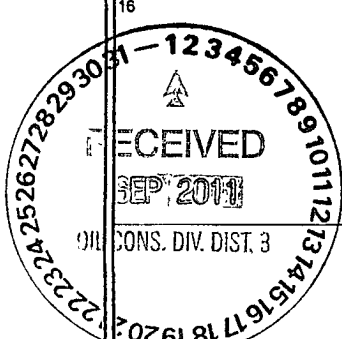
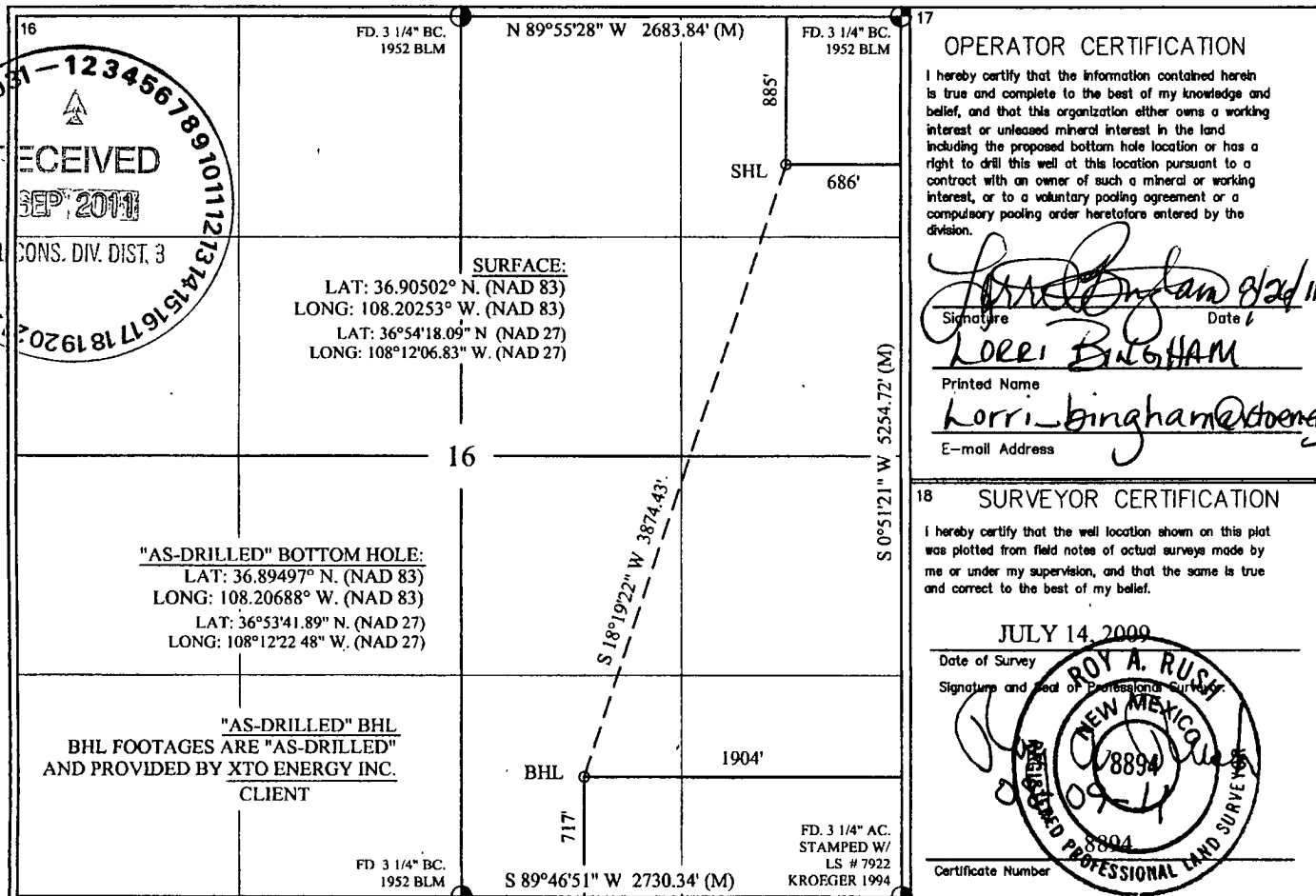
¹⁰ Surface Location

UL or lot no.	Section	Township	Range	Lot Idn	Feet from the	North/South line	Feet from the	East/West line	County
A	16	31-N	13-W		885	NORTH	686	EAST	SAN JUAN

¹¹ Bottom Hole Location If Different From Surface

UL or lot no.	Section	Township	Range	Lot Idn	Feet from the	North/South line	Feet from the	East/West line	County
O	16	31-N	13-W		717	SOUTH	1904	EAST	SAN JUAN
¹² Dedicated Acres 320 1/2			¹³ Joint or Infill		¹⁴ Consolidation Code		¹⁵ Order No.		

NO ALLOWABLE WILL BE ASSIGNED TO THIS COMPLETION UNTIL ALL INTERESTS HAVE BEEN CONSOLIDATED OR A NON-STANDARD UNIT HAS BEEN APPROVED BY THE DIVISION



A



Weatherford International Ltd.

WFT Survey Report Lat, Long



Company: XTO	Date: 8/15/2011	Time: 07:23:48	Page: 1
Field: San Juan, NM (NAD 83)	Co-ordinate(NE) Reference: Well: Mohave #1H, True North		
Site: Mohave #1H	Vertical (TVD) Reference: System: Mean Sea Level		
Well: Mohave #1H	Section (VS) Reference: Well (0.00N,0.00E,199.41Azi)		
Wellpath: 1	Survey Calculation Method: Minimum Curvature	Db: Sybase	

Survey: Wft Svy ST01	Start Date: 8/2/2011	
Company: Weatherford International Ltd.	Engineer: Russell W. Joyner	
Tool: MWD,MWD - Standard	Tied-to: User Defined	

Field: San Juan, NM (NAD 83)		
Map System: US State Plane Coordinate System 1983	Map Zone: New Mexico, Western Zone	
Geo Datum: GRS 1980	Coordinate System: Well Centre	
Sys Datum: Mean Sea Level	Geomagnetic Model: IGRF2010	

Site: Mohave #1H			
Site Position:	Northing: 2148967.03 ft	Latitude: 36 54 18.072 N	
From: Geographic	Easting: 2615154.31 ft	Longitude: 108 12 9.108 W	
Position Uncertainty: 0.00 ft		North Reference: True	
Ground Level: 5768.00 ft		Grid Convergence: -0.22 deg	

Well: Mohave #1H	Slot Name:
Well Position: +N/-S 0.00 ft	Northing: 2148967.03 ft
+E/-W 0.00 ft	Easting : 2615154.31 ft
Position Uncertainty: 0.00 ft	Latitude: 36 54 18.072 N
	Longitude: 108 12 9.108 W

Wellpath: 1	Drilled From: Surface		
Current Datum: SITE	Tie-on Depth: 0.00 ft		
Magnetic Data: 7/15/2011	Above System Datum: Mean Sea Level		
Field Strength: 50810 nT	Declination: 10.09 deg		
Vertical Section: Depth From (TVD)	Mag Dip Angle: 63.52 deg		
ft	+N/-S	ft	Direction
	ft	ft	deg
0.00	0.00	0 00	199 41

Survey															
MD	Incl	Azim	TVD	N/S	E/W	VS	DLS	Lat	Min	Sec	Long	Min	Sec	Comment	
ft	deg	deg	ft	ft	ft	ft	deg/100ft								
424.00	0.93	21.42	-5356.02	3.22	1.26	-3.46	0.00	36	54	18.104	108	12	9.092	9 5/8"	
1337.00	14.20	198.68	-4445.13	-11.96	-4.14	12.65	1.66	36	54	17.954	108	12	9.159	Tie On Wft S	
1372.00	16.81	197.95	-4411.41	-20.84	-7.08	22.01	7.48	36	54	17.866	108	12	9.195	First Wft Sv	
1403.00	18.81	197.98	-4381.89	-29.86	-10.00	31.49	6.45	36	54	17.777	108	12	9.231		
1433.00	23.00	197.23	-4353.87	-40.06	-13.23	42.18	13.99	36	54	17.676	108	12	9.271		
1464.00	26.81	197.10	-4325.76	-52.53	-17.09	55.22	12.29	36	54	17.553	108	12	9.318		
1495.00	29.25	198.48	-4298.40	-66.40	-21.54	69.78	8.14	36	54	17.415	108	12	9.373		
1525.00	32.31	201.98	-4272.63	-80.79	-26.87	85.13	11.82	36	54	17.273	108	12	9.439		
1555.00	35.38	203.23	-4247.71	-96.21	-33.30	101.81	10.49	36	54	17.121	108	12	9.518		
1585.00	38.44	203.85	-4223.73	-112.72	-40.49	119.77	10.28	36	54	16.957	108	12	9.607		
1616.00	41.25	204.10	-4199.93	-130.87	-48.57	139.57	9.08	36	54	16.778	108	12	9.706		
1647.00	44.13	203.98	-4177.15	-150.06	-57.13	160.52	9.29	36	54	16.588	108	12	9.811		
1679.00	46.88	203.98	-4154.72	-170.92	-66.40	183.27	8.59	36	54	16.382	108	12	9.926		
1709.00	49.44	203.71	-4134.71	-191.36	-75.44	205.55	8.56	36	54	16.180	108	12	10.037		
1741.00	51.63	203.35	-4114.37	-214.01	-85.30	230.19	6.90	36	54	15.956	108	12	10.158		
1771.00	54.19	203.23	-4096.28	-235.99	-94.76	254.06	8.54	36	54	15.739	108	12	10.275		
1801.00	56.79	203.00	-4079.29	-258.72	-104.46	278.73	8.69	36	54	15.514	108	12	10.394		
1835.00	59.18	202.42	-4061.26	-285.31	-115.59	307.51	7.18	36	54	15.251	108	12	10.531		
1865.00	60.50	201.60	-4046.19	-309.36	-125.31	333.42	4.99	36	54	15.013	108	12	10.651		
1898.00	62.06	200.73	-4030.33	-336.35	-135.75	362.35	5.26	36	54	14.746	108	12	10.780		
1929.00	64.81	200.73	-4016.47	-362.28	-145.57	390.06	8.87	36	54	14.490	108	12	10.900		
1960.00	68.19	200.85	-4004.11	-388.85	-155.66	418.48	10.91	36	54	14.227	108	12	11.025		
1991.00	71.19	200.73	-3993.35	-416.03	-165.98	447.54	9.68	36	54	13.958	108	12	11.152		
2022.00	73.50	200.48	-3983.95	-443.68	-176.37	477.07	7.49	36	54	13.685	108	12	11.280		



Weatherford International Ltd.

WFT Survey Report Lat, Long



Company: XTO	Date: 8/15/2011	Time: 07:23:48	Page: 2
Field: San Juan, NM (NAD 83)	Co-ordinate(NE) Reference: Well: Mohave #1H, True North	System: Mean Sea Level	
Site: Mohave #1H	Vertical (TVD) Reference: Well (0 00N,0 00E,199.41Azi)	Db: Sybase	
Well: Mohave #1H	Section (VS) Reference:	Survey Calculation Method: Minimum Curvature	
Wellpath: 1			

Survey

MD ft	Incl deg	Azim deg	TVD ft	N/S ft	E/W ft	VS ft	DLS deg/100ft	Lat	Min	Sec	Long	Min	Sec	Comment
2054.00	74.75	200.35	-3975.20	-472.52	-187.11	507.85	3.93	36	54	13.400	108	12	11.412	
2086.00	77.17	200.19	-3967.44	-501.64	-197.86	538.89	7.58	36	54	13.112	108	12	11.544	
2118.00	80.38	199.73	-3961.21	-531.14	-208.57	570.27	10.13	36	54	12.820	108	12	11.676	
2149.00	81.81	199.60	-3956.41	-559.98	-218.88	600.89	4.63	36	54	12.535	108	12	11.803	
2181.00	81.69	199.85	-3951.82	-589.79	-229.57	632.56	0.86	36	54	12.240	108	12	11.935	
2213.00	80.94	200.23	-3946.99	-619.51	-240.41	664.19	2.62	36	54	11.946	108	12	12.068	
2244.00	82.63	200.60	-3942.56	-648.26	-251.11	694.87	5.58	36	54	11.662	108	12	12.200	
2275.00	85.26	201.17	-3939.29	-677.06	-262.10	725.68	8.68	36	54	11.377	108	12	12.335	
2303.00	88.42	201.23	-3937.74	-703.12	-272.21	753.62	11.29	36	54	11.119	108	12	12.460	
2328.00	89.24	200.63	-3937.23	-726.47	-281.14	778.61	4.07	36	54	10.888	108	12	12.570	Csg
2338.00	89.57	200.39	-3937.13	-735.83	-284.64	788.61	4.07	36	54	10.796	108	12	12.613	
2353.00	89.66	200.68	-3937.03	-749.88	-289.90	803.60	2.02	36	54	10.657	108	12	12.677	
2384.00	89.27	199.84	-3936.74	-778.96	-300.64	834.60	2.99	36	54	10.369	108	12	12.810	
2415.00	88.81	198.10	-3936.22	-808.27	-310.71	865.59	5.80	36	54	10.080	108	12	12.934	
2445.00	88.56	197.35	-3935.53	-836.84	-319.84	895.57	2.63	36	54	9.797	108	12	13.046	
2476.00	88.13	196.98	-3934.64	-866.45	-328.99	926.53	1.83	36	54	9.504	108	12	13.159	
2506.00	87.63	196.98	-3933.53	-895.12	-337.74	956.49	1.67	36	54	9.221	108	12	13.266	
2537.00	87.65	197.15	-3932.25	-924.73	-346.83	987.43	0.55	36	54	8.928	108	12	13.378	
2568.00	88.44	196.98	-3931.19	-954.35	-355.92	1018.39	2.61	36	54	8.635	108	12	13.490	
2598.00	88.31	196.85	-3930.34	-983.04	-364.65	1048.35	0.61	36	54	8.351	108	12	13.598	
2629.00	88.88	196.73	-3929.58	-1012.71	-373.60	1079.31	1.88	36	54	8.058	108	12	13.708	
2659.00	89.69	197.35	-3929.21	-1041.39	-382.39	1109.28	3.40	36	54	7.774	108	12	13.816	
2690.00	90.50	198.85	-3929.26	-1070.85	-392.02	1140.27	5.50	36	54	7.483	108	12	13.935	
2721.00	91.56	199.23	-3929.82	-1100.15	-402.13	1171.26	3.63	36	54	7.193	108	12	14.059	
2751.00	93.06	199.10	-3931.02	-1128.47	-411.97	1201.24	5.02	36	54	6.913	108	12	14.180	
2782.00	94.88	198.85	-3933.17	-1157.71	-422.03	1232.16	5.93	36	54	6.624	108	12	14.304	
2813.00	95.35	198.00	-3935.93	-1187.00	-431.79	1263.03	3.12	36	54	6.335	108	12	14.424	
2843.00	93.38	197.73	-3938.22	-1215.47	-440.96	1292.93	6.63	36	54	6.053	108	12	14.537	
2874.00	90.94	197.60	-3939.39	-1244.99	-450.36	1323.89	7.88	36	54	5.761	108	12	14.653	
2904.00	89.88	197.60	-3939.60	-1273.58	-459.43	1353.88	3.53	36	54	5.478	108	12	14.765	
2935.00	87.63	197.98	-3938.93	-1303.09	-468.90	1384.86	7.36	36	54	5.187	108	12	14.881	
2965.00	87.06	198.10	-3937.54	-1331.58	-478.18	1414.82	1.94	36	54	4.905	108	12	14.996	
2995.00	87.00	197.60	-3935.98	-1360.10	-487.37	1444.76	1.68	36	54	4.623	108	12	15.109	
3026.00	87.31	197.48	-3934.44	-1389.62	-496.70	1475.71	1.07	36	54	4.331	108	12	15.223	
3057.00	89.25	197.23	-3933.51	-1419.20	-505.94	1506.67	6.31	36	54	4.039	108	12	15.337	
3086.00	91.65	198.01	-3933.74	-1446.83	-514.72	1535.66	8.70	36	54	3.765	108	12	15.445	
3118.00	94.20	198.15	-3935.37	-1477.21	-524.63	1567.60	7.98	36	54	3.465	108	12	15.567	
3148.00	95.25	197.35	-3937.85	-1505.69	-533.75	1597.49	4.39	36	54	3.183	108	12	15.680	
3179.00	95.38	196.85	-3940.72	-1535.19	-542.82	1628.33	1.66	36	54	2.892	108	12	15.791	
3209.00	93.94	197.73	-3943.15	-1563.74	-551.71	1658.21	5.62	36	54	2.609	108	12	15.901	
3240.00	91.81	197.48	-3944.71	-1593.25	-561.07	1689.15	6.92	36	54	2.318	108	12	16.016	
3270.00	90.06	197.60	-3945.20	-1621.85	-570.11	1719.13	5.85	36	54	2.035	108	12	16.127	
3301.00	88.63	198.35	-3944.84	-1651.33	-579.68	1750.12	5.21	36	54	1.743	108	12	16.245	
3332.00	86.75	198.85	-3943.60	-1680.69	-589.56	1781.09	6.27	36	54	1.453	108	12	16.367	
3364.00	85.06	199.23	-3941.31	-1710.86	-599.97	1813.01	5.41	36	54	1.155	108	12	16.495	
3396.00	85.01	199.65	-3938.54	-1740.92	-610.58	1844.89	1.32	36	54	0.857	108	12	16.626	
3428.00	85.63	199.98	-3935.93	-1770.92	-621.39	1876.78	2.19	36	54	0.561	108	12	16.759	
3459.00	85.89	200.12	-3933.64	-1799.97	-631.99	1907.69	0.95	36	54	0.273	108	12	16.889	
3491.00	87.06	200.35	-3931.67	-1829.93	-643.04	1939.63	3.73	36	53	59.977	108	12	17.025	
3523.00	87.25	200.48	-3930.08	-1859.89	-654.19	1971.58	0.72	36	53	59.681	108	12	17.162	
3555.00	87.38	199.85	-3928.58	-1889.89	-665.21	2003.54	2.01	36	53	59.384	108	12	17.298	
3586.00	88.31	199.98	-3927.42	-1919.02	-675.76	2034.52	3.03	36	53	59.096	108	12	17.428	



Weatherford International Ltd.

WFT Survey Report Lat, Long



Company: XTO	Date: 8/15/2011	Time: 07:23:48	Page: 3
Field: San Juan, NM (NAD 83)	Co-ordinate(NE) Reference: Well: Mohave #1H, True North		
Site: Mohave #1H	Vertical (TVD) Reference: System: Mean Sea Level		
Well: Mohave #1H	Section (VS) Reference: Well (0.00N,0.00E,199.41Azi)		
Wellpath: 1	Survey Calculation Method: Minimum Curvature	Db: Sybase	

Survey

MD ft	Incl deg	Azim deg	TVD ft	N/S ft	E/W ft	VS ft	DLS deg/100ft	Lat	Min	Sec	Long	Min	Sec	Comment
3618.00	88.56	199.85	-3926.54	-1949.09	-686.65	2066.51	0.88	36	53	58.799	108	12	17.562	
3650.00	88.94	199.10	-3925.85	-1979.25	-697.32	2098.50	2.63	36	53	58.501	108	12	17.693	
3681.00	89.00	198.73	-3925.29	-2008.58	-707.37	2129.49	1.21	36	53	58.211	108	12	17.817	
3713.00	88.31	198.60	-3924.54	-2038.88	-717.61	2161.48	2.19	36	53	57.911	108	12	17.943	
3744.00	88.25	198.10	-3923.61	-2068.29	-727.36	2192.46	1.62	36	53	57.620	108	12	18.063	
3776.00	88.75	197.35	-3922.77	-2098.76	-737.10	2224.44	2.82	36	53	57.319	108	12	18.183	
3807.00	89.31	197.85	-3922.24	-2128.31	-746.47	2255.42	2.42	36	53	57.027	108	12	18.299	
3840.00	90.46	198.51	-3922.18	-2159.66	-756.77	2288.41	4.02	36	53	56.717	108	12	18.425	
3872.00	91.94	198.85	-3922.85	-2189.97	-767.01	2320.40	4.75	36	53	56.417	108	12	18.551	
3900.00	92.13	198.48	-3923.84	-2216.48	-775.97	2348.38	1.48	36	53	56.155	108	12	18.662	
3936.00	92.56	198.98	-3925.32	-2250.54	-787.52	2384.35	1.83	36	53	55.818	108	12	18.804	
3967.00	92.32	199.70	-3926.64	-2279.77	-797.78	2415.32	2.45	36	53	55.529	108	12	18.930	
3999.00	91.06	200.35	-3927.58	-2309.82	-808.73	2447.30	4.43	36	53	55.232	108	12	19.065	
4034.00	90.72	199.54	-3928.12	-2342.71	-820.67	2482.29	2.51	36	53	54.907	108	12	19.212	
4062.00	90.25	199.23	-3928.36	-2369.13	-829.96	2510.29	2.01	36	53	54.645	108	12	19.326	
4094.00	90.31	199.23	-3928.52	-2399.34	-840.50	2542.29	0.19	36	53	54.347	108	12	19.456	
4119.00	88.21	199.53	-3928.19	-2422.92	-848.79	2567.29	8.49	36	53	54.113	108	12	19.558	
4158.00	90.06	199.73	-3927.60	-2459.65	-861.89	2606.28	4.77	36	53	53.750	108	12	19.720	
4190.00	90.44	199.85	-3927.74	-2489.76	-872.73	2638.28	1.25	36	53	53.453	108	12	19.853	
4222.00	90.67	199.73	-3928.05	-2519.87	-883.56	2670.28	0.81	36	53	53.155	108	12	19.986	
4253.00	90.94	199.48	-3928.49	-2549.07	-893.96	2701.28	1.19	36	53	52.866	108	12	20.114	
4285.00	90.63	199.48	-3928.93	-2579.23	-904.63	2733.27	0.97	36	53	52.568	108	12	20.246	
4306.00	90.19	199.60	-3929.08	-2599.02	-911.66	2754.27	2.17	36	53	52.372	108	12	20.332	
4348.00	89.94	199.23	-3929.13	-2638.63	-925.62	2796.27	1.06	36	53	51.980	108	12	20.504	
4379.00	89.88	198.85	-3929.08	-2667.94	-935.73	2827.27	1.24	36	53	51.691	108	12	20.629	
4411.00	90.00	198.73	-3929.04	-2698.23	-946.04	2859.27	0.53	36	53	51.391	108	12	20.755	
4440.00	90.00	198.64	-3929.04	-2725.70	-955.33	2888.27	0.31	36	53	51.119	108	12	20.870	
4474.00	90.44	198.78	-3929.17	-2757.91	-966.23	2922.26	1.36	36	53	50.801	108	12	21.004	
4504.00	91.13	198.35	-3929.59	-2786.34	-975.78	2952.26	2.71	36	53	50.520	108	12	21.122	
4536.00	90.75	198.23	-3930.11	-2816.72	-985.83	2984.25	1.25	36	53	50.219	108	12	21.245	
4567.00	90.69	198.10	-3930.50	-2846.17	-995.49	3015.24	0.46	36	53	49.928	108	12	21.364	
4597.00	90.69	197.85	-3930.86	-2874.71	-1004.75	3045.23	0.83	36	53	49.646	108	12	21.478	
4629.00	90.69	197.60	-3931.25	-2905.19	-1014.49	3077.21	0.78	36	53	49.345	108	12	21.598	
4660.00	90.63	197.50	-3931.60	-2934.74	-1023.84	3108.19	0.38	36	53	49.052	108	12	21.713	
4691.00	90.19	197.10	-3931.83	-2964.34	-1033.05	3139.17	1.92	36	53	48.760	108	12	21.827	
4722.00	89.94	196.60	-3931.86	-2994.01	-1042.04	3170.14	1.80	36	53	48.466	108	12	21.937	
4749.00	89.88	196.48	-3931.82	-3019.89	-1049.73	3197.10	0.50	36	53	48.210	108	12	22.032	
4783.00	90.94	197.60	-3932.06	-3052.40	-1059.69	3231.07	4.54	36	53	47.889	108	12	22.154	
4814.00	90.81	197.85	-3932.53	-3081.92	-1069.13	3262.06	0.91	36	53	47.597	108	12	22.271	
4848.00	91.07	196.89	-3933.09	-3114.37	-1079.27	3296.03	2.92	36	53	47.276	108	12	22.396	
4877.00	90.88	196.48	-3933.59	-3142.14	-1087.60	3324.99	1.56	36	53	47.002	108	12	22.498	
4912.00	90.94	197.60	-3934.14	-3175.60	-1097.85	3359.96	3.20	36	53	46.671	108	12	22.624	
4944.00	91.13	198.23	-3934.72	-3206.04	-1107.70	3391.94	2.06	36	53	46.370	108	12	22.745	
4975.00	91.06	199.85	-3935.31	-3235.34	-1117.81	3422.93	5.23	36	53	46.080	108	12	22.870	
5007.00	91.06	200.10	-3935.90	-3265.41	-1128.74	3454.93	0.78	36	53	45.783	108	12	23.004	
5039.00	91.06	200.10	-3936.50	-3295.46	-1139.73	3486.92	0.00	36	53	45.485	108	12	23.140	
5071.00	91.25	200.23	-3937.14	-3325.49	-1150.76	3518.91	0.72	36	53	45.189	108	12	23.276	
5103.00	90.19	200.35	-3937.54	-3355.50	-1161.86	3550.90	3.33	36	53	44.892	108	12	23.412	
5131.00	89.90	200.33	-3937.57	-3381.75	-1171.59	3578.90	1.04	36	53	44.632	108	12	23.532	
5165.00	90.21	200.53	-3937.60	-3413.62	-1183.46	3612.89	1.09	36	53	44.317	108	12	23.678	
5198.00	90.06	200.10	-3937.68	-3444.56	-1194.91	3645.89	1.38	36	53	44.011	108	12	23.819	
5230.00	90.25	199.98	-3937.76	-3474.62	-1205.88	3677.89	0.70	36	53	43.714	108	12	23.954	
5262.00	90.19	199.85	-3937.89	-3504.71	-1216.78	3709.89	0.45	36	53	43.416	108	12	24.088	



Weatherford International Ltd.
WFT Survey Report Lat, Long



Company: XTO	Date: 8/15/2011	Time: 07:23:48	Page: 4
Field: San Juan, NM (NAD 83)	Co-ordinate(NE) Reference: Well: Mohave #1H, True North	Vertical (TVD) Reference: System. Mean Sea Level	
Site: Mohave #1H	Section (VS) Reference: Well (0.00N,0.00E,199.41Azi)	Survey Calculation Method: Minimum Curvature	
Well: Mohave #1H		Db: Sybase	
Wellpath: 1			

Survey

MD ft	Incl deg	Azim deg	TVD ft	N/S ft	E/W ft	VS ft	DLS deg/100ft	Lat	Min	Sec	Long	Min	Sec	Comment
5293.00	89.94	199.60	-3937.92	-3533.89	-1227.24	3740.89	1.14	36	53	43.128	108	12	24.217	
5325.00	89.69	199.35	-3937.82	-3564.06	-1237.91	3772.89	1.10	36	53	42.829	108	12	24.348	
5356.00	89.50	199.10	-3937.60	-3593.33	-1248.12	3803.88	1.01	36	53	42.540	108	12	24.474	
5375.00	89.33	199.01	-3937.40	-3611.29	-1254.32	3822.88	1.01	36	53	42.362	108	12	24.550	Last Wft Svy
5425.00	89.33	199.01	-3936.82	-3658.56	-1270.61	3872.88	0.00	36	53	41.895	108	12	24.751	Proj To Bit

Casing Points

MD ft	TVD ft	Diameter in	Hole Size in	Name
424.00	-5356.02	9.625	12.250	9 5/8"
2328.00	-3937.23	0.000	0.000	Csg

Annotation

MD ft	TVD ft	
1337.00	-4445.13	Tie On Wft ST00
1372.00	-4411.41	First Wft Svy ST01
5375.00	-3937.40	Last Wft Svy ST01
5425.00	-3936.82	Proj To Bit

Formations

MD ft	TVD ft	Formations	Lithology	Dip Angle deg	Dip Direction deg
	-5780.00	Kirtland Shale		0.00	0.00
1394.45	-4390.00	Fruitland Formation		0.00	0.00
1719.40	-4128.00	Upper Fruitland Coal		0.00	0.00
2189.37	-3950.59	Lower Fruitland Coal		-0.50	200.00
2264.43	-3940.24	Base of Lower Coal		-0.50	200.00
3730.53	-3924.01	Pictured Cliffs SS		-0.50	200.00