

UNITED STATES  
DEPARTMENT OF THE INTERIOR  
BUREAU OF LAND MANAGEMENT

RECEIVED

FORM APPROVED  
OMB NO 1004-0137  
Expires July 31, 2010

SEP 20 2011

SUNDRY NOTICES AND REPORTS ON WELLS

Do not use this form for proposals to drill or to re-enter an abandoned well. Use Form 3160-3 (APD) for such proposals. Farmington Field Office, Bureau of Land Management

SUBMIT IN TRIPLICATE - Other instructions on page 2

1 Type of Well

☐ Oil Well ☒ Gas Well ☐ Other

2 Name of Operator

XTO ENERGY INC.

3a Address

382 CR 3100 AZTEC, NM 87410

3b Phone No (include area code)

505-333-3100

4 Location of Well (Footage, Sec., T, R, M, or Survey Description)

1645' FSL & 1160' FEL NESE Sec. 6 (I) - T27N-10W N.M.P.M.

5 Lease Serial No.

NMSF077384

6 If Indian, Allottee or Tribe Name

7 If Unit or CA/Agreement, Name and/or No

8 Well Name and No

KUTZ J FEDERAL #2E

9 API Well No

30-045-30755

10 Field and Pool, or Exploratory Area

BASIN DAKOTA

11 County or Parish, State

SAN JUAN

NM

12 CHECK APPROPRIATE BOX(ES) TO INDICATE NATURE OF NOTICE, REPORT, OR OTHER DATA

TYPE OF SUBMISSION

☒ Notice of Intent

☐ Subsequent Report

☐ Final Abandonment Notice

TYPE OF ACTION

☐ Acidize

☐ Alter Casing

☐ Casing Repair

☐ Change Plans

☐ Convert to Injection

☐ Deepen

☐ Fracture Treat

☐ New Construction

☒ Plug and Abandon

☐ Plug Back

☐ Production (Start/Resume)

☐ Reclamation

☐ Recomplete

☐ Temporarily Abandon

☐ Water Disposal

☐ Water Shut-Off

☐ Well Integrity

☐ Other

13 Describe Proposed or Completed Operation (clearly state all pertinent details, including estimated starting date of any proposed work and approximate duration thereof. If the proposal is to deepen directionally or recompleat horizontally, give subsurface locations and measured and true vertical depths of all pertinent markers and zones. Attach the Bond under which the work will be performed or provide the Bond No. on file with BLM/BIA. Required subsequent reports shall be filed within 30 days following completion of the involved operations. If the operation results in a multiple completion or recompleat in a new interval, a Form 3160-4 shall be filed once testing has been completed. Final Abandonment Notices shall be filed only after all requirements, including reclamation, have been completed, and the operator has determined that the final site is ready for final inspection.)

XTO Energy Inc. proposes to plug and abandon this well per the attached procedure & wellbore diagram.

Extend plug #1 down to 5650'

14 I hereby certify that the foregoing is true and correct  
Name (Printed/Typed)

DOLENA JOHNSON

Title REGULATORY COMPLIANCE TECHNICIAN

Signature

Date 09/19/2011

THIS SPACE FOR FEDERAL OR STATE OFFICE USE

Approved by

Original Signed: Stephen Mason

Title

Date

SEP 21 2011

Conditions of approval, if any, are attached. Approval of this notice does not warrant or certify that the applicant holds legal or equitable title to those rights in the subject lease which would entitle the applicant to conduct operations thereon.

Office

Title 18 U.S.C. Section 1001, and Title 43 U.S.C. Section 1212, makes it a crime for any person knowingly and willfully to make to any department or agency of the United States any false, fictitious or fraudulent statements or representations as to any matter within its jurisdiction.

NMOCD 14

## Kutz J Federal #2E

Location: 1,645' FSL & 1,160' FEL, Section 6, T27N, R10W, San Juan County, NM  
API: 30-045-30755  
Open Perfs: ---Dakota---6,278'-6,542'  
Fish. 5,650'-6,080'

### PLUG AND ABANDONMENT PROCEDURE

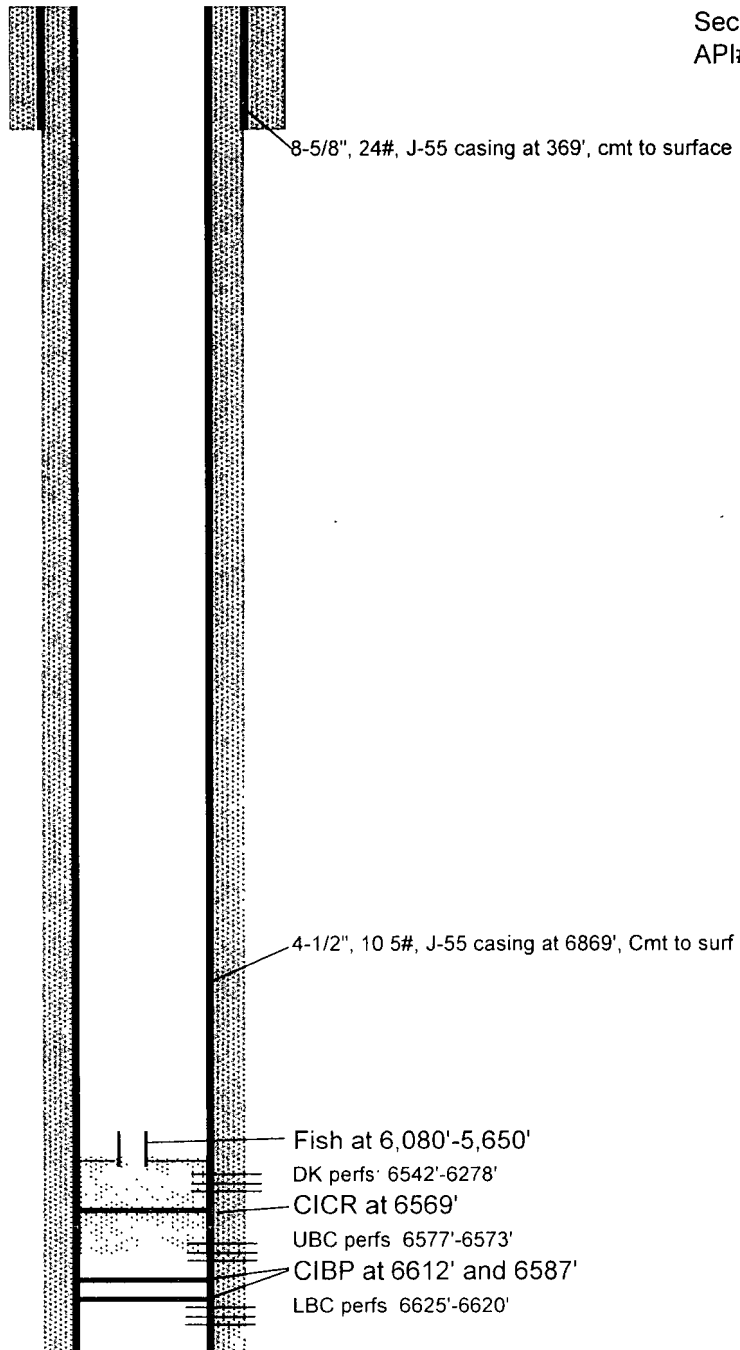
Note All cement volumes use 100% excess outside pipe and 50' excess inside. The stabilizing wellbore fluid will be 8.3 ppg, sufficient to balance all exposed formation pressures. All cement will be Class B, mixed at 15.6 ppg with a 1.18 cf/sx yield

1. This project requires an approved NMOCD C-144 CLEZ Closed-Loop System Permit for the use of an approved steel tank to handle waste fluids circulated from the well and cement wash up
2. Install and test location rig anchors. Comply with all NMOCD, BLM, and Operator safety regulations. MIRU pulling unit. Conduct safety meeting for all personnel on location. Record casing, tubing and bradenhead pressures. NU relief line and blow down well. Kill well with water as necessary and at least pump tubing capacity of water down the tubing. ND wellhead and NU BOP. Function test BOP TOH with tubing and LD BHA.
3. TIH with a 4-1/2" casing scraper and 2-3/8" SN to 5,650'. PT tbq to 2000 psig. TOH with tbq and LD BHA.
4. **Plug #1 (Gallup, <sup>5650'</sup>5,455' – 5,355')**: Load casing with water and circulate well clean. Pressure test casing to 800#. If the casing does not test, then spot or tag subsequent plugs as necessary. Mix and spot a 12 sx Class B balanced plug cement to cover the Gallup top. PUH to 4,625'
5. **Plug #2 (Mancos, 4,625' – 4,525')**: Mix and spot a 12 sx Class B balanced plug cement to cover the Mancos top. PUH to 3,440'.
6. **Plug #3 (Cliffhouse, <sup>37</sup>3,440' – <sup>77</sup>3,340')**: Mix and spot a 12 sx Class B balanced plug cement to cover the Cliffhouse top. PUH to 2,840'.
7. **Plug #4 (Chacra, 2,840' – 2,740')**: Mix and spot a 12 sx Class B balanced plug cement to cover the Chacra top. PUH to 1,940'.
8. **Plug #5 (Pictured Cliffs and Fruitland Coal, <sup>1934</sup>1,940' - <sup>1514</sup>1,595')**: Mix and spot a 20 sx Class B balanced plug cement to cover the Pictured Cliffs and Fruitland Coal tops. PUH to 1,000'
9. **Plug #6 (Kirtland and Ojo Alamo tops, 1,000' - 780')**: Mix and spot a 21 sx Class B balanced plug cement to cover the Kirtland and Ojo Alamo tops. PUH to 420'
10. **Plug #7 (Casing shoe, 420' – Surface)**: Connect the pump line to the bradenhead valve and attempt to pressure test the BH annulus to 300 PSI, note the volume to load. If the BH Annulus holds pressure, then establish circulation out casing valve with water. Mix approximately 36 sxs Class B cement and spot a balanced plug inside the casing from 420' to surface, circulate good cement out casing valve TOH and LD tubing. Shut in and WOC. If the BH annulus does not test, then perforate at the appropriate depth and attempt to circulate cement to surface filling the 4-1/2" casing and the BH annulus to surface. Shut well in and WOC
11. ND BOP and cut off casing below surface casing flange. Install P&A marker with cement to comply with regulations. RD, move off location, cut off anchors and restore location.

Tops:

Casing shoe	369'	Chacra	2,790'
Ojo Alamo	830'	Cliffhouse	3,390'
Kirtland	950'	Mancos	4,575'
Fruitland Coal	1,645'	Gallup	5,405'
Pictured Cliffs	1,890'	Dakota	6,275'

Kutz J Federal #2E  
Sec 6, T27N, R10W  
API# 30-045-30755



Tops:

Casing shoe	369'	Chacra	2790'
Ojo Alamo	830'	Cliffhouse	3390'
Kirtland	950'	Mancos	4575'
Fruitland Coal	1645'	Gallup	5405'
Pictured Cliffs	1890'	Dakota	6275'

**UNITED STATES DEPARTMENT OF THE INTERIOR  
BUREAU OF LAND MANAGEMENT  
FARMINGTON DISTRICT OFFICE  
1235 LA PLATA HIGHWAY  
FARMINGTON, NEW MEXICO 87401**

Attachment to notice of  
Intention to Abandon:

Re: Permanent Abandonment  
Well: 2E Kutz J Federal

**CONDITIONS OF APPROVAL**

1. Plugging operations authorized are subject to the attached "General Requirements for Permanent Abandonment of Wells on Federal and Indian Lease."
2. Farmington Office is to be notified at least 24 hours before the plugging operations commence (505) 599-8907.
3. The following modifications to your plugging program are to be made:
  - a) Place the Mesaverde plug from 3477' – 3377'.
  - b) Place the Pictured Cliffs/Fruitland plug from 1934' – 1514'.

You are also required to place cement excesses per 4.2 and 4.4 of the attached General Requirements.

Office Hours: 7:45 a.m. to 4:30 p.m.