

District I  
1625 N French Dr, Hobbs, NM 88240  
District II  
1301 W Grand Avenue, Artesia, NM 88210  
District III  
1000 Rio Brazos Road, Aztec, NM 87410  
District IV  
1220 S St Francis Dr, Santa Fe, NM 87505

State of New Mexico  
Energy Minerals and Natural Resources  
Department  
Oil Conservation Division  
1220 South St. Francis Dr.  
Santa Fe, NM 87505

Form C-144  
July 21, 2008

For temporary pits, closed-loop systems, and below-grade tanks, submit to the appropriate NMOCD District Office  
For permanent pits and exceptions submit to the Santa Fe Environmental Bureau office and provide a copy to the appropriate NMOCD District Office

5950

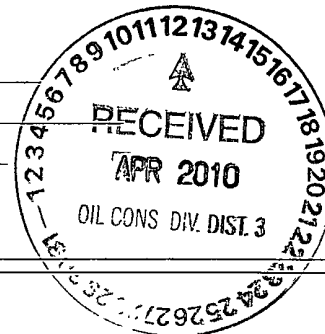
Pit, Closed-Loop System, Below-Grade Tank, or  
Proposed Alternative Method Permit or Closure Plan Application

Type of action: ☒ Permit of a pit, closed-loop system, below-grade tank, or proposed alternative method  
☐ Closure of a pit, closed-loop system, below-grade tank, or proposed alternative method  
☐ Modification to an existing permit  
☐ Closure plan only submitted for an existing permitted or non-permitted pit, closed-loop system, below-grade tank, or proposed alternative method

**Instructions:** Please submit one application (Form C-144) per individual pit, closed-loop system, below-grade tank or alternative request

Please be advised that approval of this request does not relieve the operator of liability should operations result in pollution of surface water, ground water or the environment. Nor does approval relieve the operator of its responsibility to comply with any other applicable governmental authority's rules, regulations or ordinances.

1.  
Operator: Huntington Energy, L.L.C. OGRID # 208706  
Address: 908 N.W. 71<sup>st</sup> St., Oklahoma City, OK 73116  
Facility or well name: Ute Mountain Ute #101  
API Number: 30-045-35054 OCD Permit Number: \_\_\_\_\_  
U/L or Qtr/Qtr G Section 17 Township 32N Range 14W County San Juan  
Center of Proposed Design: Latitude 36.99006 Longitude -108.32974 NAD. ☐ 1927 ☒ 1983  
Surface Owner: ☐ Federal ☐ State ☐ Private ☒ Tribal Trust or Indian Allotment



2.  
☒ **Pit:** Subsection F or G of 19.15.17.11 NMAC  
Temporary: ☒ Drilling ☐ Workover  
☐ Permanent ☐ Emergency ☐ Cavitation ☐ P&A  
☒ Lined ☐ Unlined Liner type: Thickness 20 mil ☒ LLDPE ☐ HDPE ☐ PVC ☐ Other \_\_\_\_\_  
☒ String-Reinforced  
Liner Seams: ☒ Welded ☐ Factory ☐ Other \_\_\_\_\_ Volume: 4000 bbl Dimensions: L 90' x W 30' x D 8'

3.  
☐ **Closed-loop System:** Subsection H of 19.15.17.11 NMAC  
Type of Operation: ☐ P&A ☐ Drilling a new well ☐ Workover or Drilling (Applies to activities which require prior approval of a permit or notice of intent)  
☐ Drying Pad ☐ Above Ground Steel Tanks ☐ Haul-off Bins ☐ Other \_\_\_\_\_  
☐ Lined ☐ Unlined Liner type: Thickness \_\_\_\_\_ mil ☐ LLDPE ☐ HDPE ☐ PVC ☐ Other \_\_\_\_\_  
Liner Seams ☐ Welded ☐ Factory ☐ Other \_\_\_\_\_

4.  
☒ **Below-grade tank:** Subsection I of 19.15.17.11 NMAC  
Volume: 120 bbl Type of fluid: Produced Water  
Tank Construction material: Metal  
☐ Secondary containment with leak detection ☒ Visible sidewalls, liner, 6-inch lift and automatic overflow shut-off  
☐ Visible sidewalls and liner ☐ Visible sidewalls only ☐ Other \_\_\_\_\_  
Liner type: Thickness 60 mil ☒ HDPE ☐ PVC ☐ Other \_\_\_\_\_

5.  
☐ **Alternative Method:**  
Submittal of an exception request is required. Exceptions must be submitted to the Santa Fe Environmental Bureau office for consideration of approval.

6.

**Fencing:** Subsection D of 19.15.17.11 NMAC (*Applies to permanent pits, temporary pits, and below-grade tanks*)

- ☐ Chain link, six feet in height, two strands of barbed wire at top (*Required if located within 1000 feet of a permanent residence, school, hospital, institution or church*)
- ☐ Four foot height, four strands of barbed wire evenly spaced between one and four feet
- ☒ Alternate Please specify 4' hogwire fence with a single strand of barbed wire on top.

7.

**Netting:** Subsection E of 19.15.17.11 NMAC (*Applies to permanent pits and permanent open top tanks*)

- ☒ Screen ☐ Netting ☐ Other \_\_\_\_\_
- ☐ Monthly inspections (If netting or screening is not physically feasible)

8.

**Signs:** Subsection C of 19.15.17.11 NMAC

- ☐ 12"x 24", 2" lettering, providing Operator's name, site location, and emergency telephone numbers
- ☒ Signed in compliance with 19.15.3.103 NMAC

9.

**Administrative Approvals and Exceptions:**

Justifications and/or demonstrations of equivalency are required. Please refer to 19.15.17 NMAC for guidance.

**Please check a box if one or more of the following is requested, if not leave blank:**

- ☐ Administrative approval(s): Requests must be submitted to the appropriate division district or the Santa Fe Environmental Bureau office for consideration of approval
- ☐ Exception(s) Requests must be submitted to the Santa Fe Environmental Bureau office for consideration of approval.

10.

**Siting Criteria (regarding permitting):** 19.15.17.10 NMAC

**Instructions:** The applicant must demonstrate compliance for each siting criteria below in the application. Recommendations of acceptable source material are provided below. Requests regarding changes to certain siting criteria may require administrative approval from the appropriate district office or may be considered an exception which must be submitted to the Santa Fe Environmental Bureau office for consideration of approval. Applicant must attach justification for request. Please refer to 19.15.17.10 NMAC for guidance. Siting criteria does not apply to drying pads or above-grade tanks associated with a closed-loop system.

Ground water is less than 50 feet below the bottom of the temporary pit, permanent pit, or below-grade tank - NM Office of the State Engineer - iWATERS database search, USGS, Data obtained from nearby wells	<input type="checkbox"/> Yes <input checked="" type="checkbox"/> No
Within 300 feet of a continuously flowing watercourse, or 200 feet of any other significant watercourse or lakebed, sinkhole, or playa lake (measured from the ordinary high-water mark) - Topographic map, Visual inspection (certification) of the proposed site	<input type="checkbox"/> Yes <input checked="" type="checkbox"/> No
Within 300 feet from a permanent residence, school, hospital, institution, or church in existence at the time of initial application ( <i>Applies to temporary, emergency, or cavitation pits and below-grade tanks</i> ) - Visual inspection (certification) of the proposed site; Aerial photo, Satellite image	<input type="checkbox"/> Yes <input checked="" type="checkbox"/> No <input type="checkbox"/> NA
Within 1000 feet from a permanent residence, school, hospital, institution, or church in existence at the time of initial application. ( <i>Applies to permanent pits</i> ) - Visual inspection (certification) of the proposed site, Aerial photo, Satellite image	<input type="checkbox"/> Yes <input type="checkbox"/> No <input checked="" type="checkbox"/> NA
Within 500 horizontal feet of a private, domestic fresh water well or spring that less than five households use for domestic or stock watering purposes, or within 1000 horizontal feet of any other fresh water well or spring, in existence at the time of initial application. - NM Office of the State Engineer - iWATERS database search, Visual inspection (certification) of the proposed site	<input type="checkbox"/> Yes <input checked="" type="checkbox"/> No
Within incorporated municipal boundaries or within a defined municipal fresh water well field covered under a municipal ordinance adopted pursuant to NMSA 1978, Section 3-27-3, as amended - Written confirmation or verification from the municipality, Written approval obtained from the municipality	<input type="checkbox"/> Yes <input checked="" type="checkbox"/> No
Within 500 feet of a wetland. - US Fish and Wildlife Wetland Identification map; Topographic map; Visual inspection (certification) of the proposed site	<input type="checkbox"/> Yes <input checked="" type="checkbox"/> No
Within the area overlying a subsurface mine - Written confirmation or verification or map from the NM EMNRD-Mining and Mineral Division	<input type="checkbox"/> Yes <input checked="" type="checkbox"/> No
Within an unstable area. - Engineering measures incorporated into the design; NM Bureau of Geology & Mineral Resources; USGS, NM Geological Society; Topographic map	<input type="checkbox"/> Yes <input checked="" type="checkbox"/> No
Within a 100-year floodplain - FEMA map	<input type="checkbox"/> Yes <input checked="" type="checkbox"/> No

11.

**Temporary Pits, Emergency Pits, and Below-grade Tanks Permit Application Attachment Checklist:** Subsection B of 19 15.17.9 NMAC**Instructions:** Each of the following items must be attached to the application. Please indicate, by a check mark in the box, that the documents are attached.

- ☒ Hydrogeologic Report (Below-grade Tanks) - based upon the requirements of Paragraph (4) of Subsection B of 19.15.17.9 NMAC  
☐ Hydrogeologic Data (Temporary and Emergency Pits) - based upon the requirements of Paragraph (2) of Subsection B of 19.15.17.9 NMAC  
☒ Siting Criteria Compliance Demonstrations - based upon the appropriate requirements of 19 15 17.10 NMAC  
☒ Design Plan - based upon the appropriate requirements of 19 15 17 11 NMAC  
☒ Operating and Maintenance Plan - based upon the appropriate requirements of 19.15.17.12 NMAC  
☒ Closure Plan (Please complete Boxes 14 through 18, if applicable) - based upon the appropriate requirements of Subsection C of 19 15.17.9 NMAC and 19.15.17.13 NMAC  
☐ Previously Approved Design (attach copy of design) API Number: \_\_\_\_\_ or Permit Number: \_\_\_\_\_

12.

**Closed-loop Systems Permit Application Attachment Checklist:** Subsection B of 19.15.17.9 NMAC**Instructions:** Each of the following items must be attached to the application. Please indicate, by a check mark in the box, that the documents are attached.

- ☐ Geologic and Hydrogeologic Data (only for on-site closure) - based upon the requirements of Paragraph (3) of Subsection B of 19.15.17.9  
☐ Siting Criteria Compliance Demonstrations (only for on-site closure) - based upon the appropriate requirements of 19 15.17 10 NMAC  
☐ Design Plan - based upon the appropriate requirements of 19 15 17.11 NMAC  
☐ Operating and Maintenance Plan - based upon the appropriate requirements of 19 15 17 12 NMAC  
☐ Closure Plan (Please complete Boxes 14 through 18, if applicable) - based upon the appropriate requirements of Subsection C of 19 15 17.9 NMAC and 19.15.17 13 NMAC  
☐ Previously Approved Design (attach copy of design) API Number: \_\_\_\_\_  
☐ Previously Approved Operating and Maintenance Plan API Number: \_\_\_\_\_ (Applies only to closed-loop system that use above ground steel tanks or haul-off bins and propose to implement waste removal for closure)

13.

**Permanent Pits Permit Application Checklist:** Subsection B of 19 15.17.9 NMAC**Instructions:** Each of the following items must be attached to the application. Please indicate, by a check mark in the box, that the documents are attached.

- ☐ Hydrogeologic Report - based upon the requirements of Paragraph (1) of Subsection B of 19.15.17.9 NMAC  
☐ Siting Criteria Compliance Demonstrations - based upon the appropriate requirements of 19.15.17.10 NMAC  
☐ Climatological Factors Assessment  
☐ Certified Engineering Design Plans - based upon the appropriate requirements of 19 15.17 11 NMAC  
☐ Dike Protection and Structural Integrity Design - based upon the appropriate requirements of 19.15 17.11 NMAC  
☐ Leak Detection Design - based upon the appropriate requirements of 19 15.17.11 NMAC  
☐ Liner Specifications and Compatibility Assessment - based upon the appropriate requirements of 19 15.17.11 NMAC  
☐ Quality Control/Quality Assurance Construction and Installation Plan  
☐ Operating and Maintenance Plan - based upon the appropriate requirements of 19 15 17 12 NMAC  
☐ Freeboard and Overtopping Prevention Plan - based upon the appropriate requirements of 19.15 17.11 NMAC  
☐ Nuisance or Hazardous Odors, including H<sub>2</sub>S, Prevention Plan  
☐ Emergency Response Plan  
☐ Oil Field Waste Stream Characterization  
☐ Monitoring and Inspection Plan  
☐ Erosion Control Plan  
☐ Closure Plan - based upon the appropriate requirements of Subsection C of 19.15.17.9 NMAC and 19 15 17.13 NMAC

14.

**Proposed Closure:** 19 15 17 13 NMAC**Instructions:** Please complete the applicable boxes, Boxes 14 through 18, in regards to the proposed closure plan.

- Type: ☒ Drilling ☐ Workover ☐ Emergency ☐ Cavitation ☐ P&A ☐ Permanent Pit ☐ Below-grade Tank ☐ Closed-loop System  
☐ Alternative  
 Proposed Closure Method: ☒ Waste Excavation and Removal  
☐ Waste Removal (Closed-loop systems only)  
☐ On-site Closure Method (Only for temporary pits and closed-loop systems)  
☐ In-place Burial ☐ On-site Trench Burial  
☐ Alternative Closure Method (Exceptions must be submitted to the Santa Fe Environmental Bureau for consideration)

15.

**Waste Excavation and Removal Closure Plan Checklist:** (19.15.17.13 NMAC) **Instructions:** Each of the following items must be attached to the closure plan. Please indicate, by a check mark in the box, that the documents are attached.

- ☒ Protocols and Procedures - based upon the appropriate requirements of 19.15 17.13 NMAC  
☒ Confirmation Sampling Plan (if applicable) - based upon the appropriate requirements of Subsection F of 19.15.17.13 NMAC  
☒ Disposal Facility Name and Permit Number (for liquids, drilling fluids and drill cuttings)  
☒ Soil Backfill and Cover Design Specifications - based upon the appropriate requirements of Subsection H of 19 15 17.13 NMAC  
☒ Re-vegetation Plan - based upon the appropriate requirements of Subsection I of 19 15 17.13 NMAC  
☒ Site Reclamation Plan - based upon the appropriate requirements of Subsection G of 19 15.17.13 NMAC

16.

**Waste Removal Closure For Closed-loop Systems That Utilize Above Ground Steel Tanks or Haul-off Bins Only:** (19 15 17 13.D NMAC)

**Instructions:** Please identify the facility or facilities for the disposal of liquids, drilling fluids and drill cuttings. Use attachment if more than two facilities are required.

Disposal Facility Name: \_\_\_\_\_ Disposal Facility Permit Number: \_\_\_\_\_  
 Disposal Facility Name: \_\_\_\_\_ Disposal Facility Permit Number: \_\_\_\_\_

Will any of the proposed closed-loop system operations and associated activities occur on or in areas that *will not* be used for future service and operations?  
☐ Yes (If yes, please provide the information below) ☐ No

*Required for impacted areas which will not be used for future service and operations*

- ☐ Soil Backfill and Cover Design Specifications - based upon the appropriate requirements of Subsection H of 19 15.17.13 NMAC  
☐ Re-vegetation Plan - based upon the appropriate requirements of Subsection I of 19.15.17.13 NMAC  
☐ Site Reclamation Plan - based upon the appropriate requirements of Subsection G of 19.15.17.13 NMAC

17.

**Siting Criteria (regarding on-site closure methods only):** 19.15 17.10 NMAC

**Instructions:** Each siting criteria requires a demonstration of compliance in the closure plan. Recommendations of acceptable source material are provided below. Requests regarding changes to certain siting criteria may require administrative approval from the appropriate district office or may be considered an exception which must be submitted to the Santa Fe Environmental Bureau office for consideration of approval. Justifications and/or demonstrations of equivalency are required. Please refer to 19.15.17.10 NMAC for guidance.

Ground water is less than 50 feet below the bottom of the buried waste - NM Office of the State Engineer - iWATERS database search; USGS; Data obtained from nearby wells	<input type="checkbox"/> Yes <input type="checkbox"/> No <input type="checkbox"/> NA
Ground water is between 50 and 100 feet below the bottom of the buried waste - NM Office of the State Engineer - iWATERS database search, USGS, Data obtained from nearby wells	<input type="checkbox"/> Yes <input type="checkbox"/> No <input type="checkbox"/> NA
Ground water is more than 100 feet below the bottom of the buried waste. - NM Office of the State Engineer - iWATERS database search, USGS, Data obtained from nearby wells	<input type="checkbox"/> Yes <input type="checkbox"/> No <input type="checkbox"/> NA
Within 300 feet of a continuously flowing watercourse, or 200 feet of any other significant watercourse or lakebed, sinkhole, or playa lake (measured from the ordinary high-water mark). - Topographic map, Visual inspection (certification) of the proposed site	<input type="checkbox"/> Yes <input type="checkbox"/> No
Within 300 feet from a permanent residence, school, hospital, institution, or church in existence at the time of initial application - Visual inspection (certification) of the proposed site, Aerial photo, Satellite image	<input type="checkbox"/> Yes <input type="checkbox"/> No
Within 500 horizontal feet of a private, domestic fresh water well or spring that less than five households use for domestic or stock watering purposes, or within 1000 horizontal feet of any other fresh water well or spring, in existence at the time of initial application - NM Office of the State Engineer - iWATERS database; Visual inspection (certification) of the proposed site	<input type="checkbox"/> Yes <input type="checkbox"/> No
Within incorporated municipal boundaries or within a defined municipal fresh water well field covered under a municipal ordinance adopted pursuant to NMSA 1978, Section 3-27-3, as amended. - Written confirmation or verification from the municipality; Written approval obtained from the municipality	<input type="checkbox"/> Yes <input type="checkbox"/> No
Within 500 feet of a wetland - US Fish and Wildlife Wetland Identification map; Topographic map; Visual inspection (certification) of the proposed site	<input type="checkbox"/> Yes <input type="checkbox"/> No
Within the area overlying a subsurface mine. - Written confirmation or verification or map from the NM EMNRD-Mining and Mineral Division	<input type="checkbox"/> Yes <input type="checkbox"/> No
Within an unstable area - Engineering measures incorporated into the design, NM Bureau of Geology & Mineral Resources; USGS, NM Geological Society; Topographic map	<input type="checkbox"/> Yes <input type="checkbox"/> No
Within a 100-year floodplain. - FEMA map	<input type="checkbox"/> Yes <input type="checkbox"/> No

18.

**On-Site Closure Plan Checklist:** (19.15.17 13 NMAC) **Instructions:** Each of the following items must be attached to the closure plan. Please indicate, by a check mark in the box, that the documents are attached.

- ☐ Siting Criteria Compliance Demonstrations - based upon the appropriate requirements of 19 15 17 10 NMAC  
☐ Proof of Surface Owner Notice - based upon the appropriate requirements of Subsection F of 19.15 17 13 NMAC  
☐ Construction/Design Plan of Burial Trench (if applicable) based upon the appropriate requirements of 19 15 17 11 NMAC  
☐ Construction/Design Plan of Temporary Pit (for in-place burial of a drying pad) - based upon the appropriate requirements of 19.15.17.11 NMAC  
☐ Protocols and Procedures - based upon the appropriate requirements of 19 15.17 13 NMAC  
☐ Confirmation Sampling Plan (if applicable) - based upon the appropriate requirements of Subsection F of 19.15.17.13 NMAC  
☐ Waste Material Sampling Plan - based upon the appropriate requirements of Subsection F of 19.15.17 13 NMAC  
☐ Disposal Facility Name and Permit Number (for liquids, drilling fluids and drill cuttings or in case on-site closure standards cannot be achieved)  
☐ Soil Cover Design - based upon the appropriate requirements of Subsection H of 19.15.17.13 NMAC  
☐ Re-vegetation Plan - based upon the appropriate requirements of Subsection I of 19 15 17 13 NMAC  
☐ Site Reclamation Plan - based upon the appropriate requirements of Subsection G of 19 15.17.13 NMAC

19

**Operator Application Certification:**

I hereby certify that the information submitted with this application is true, accurate and complete to the best of my knowledge and belief.

Name (Print): Catherine Smith Title: Regulatory

Signature: Catherine Smith Date: 4/8/2010

e-mail address csmith@huntingtonenergy.com Telephone: 405-840-9876

20

**OCD Approval:** ☒ Permit Application (including closure plan) ☐ Closure Plan (only) ☐ OCD Conditions (see attachment)

OCD Representative Signature: Jonathan D. Kelly Approval Date: 9/19/2011

Title: Compliance Officer OCD Permit Number:

21

**Closure Report (required within 60 days of closure completion):** Subsection K of 19 15 17.13 NMAC

**Instructions:** Operators are required to obtain an approved closure plan prior to implementing any closure activities and submitting the closure report. The closure report is required to be submitted to the division within 60 days of the completion of the closure activities. Please do not complete this section of the form until an approved closure plan has been obtained and the closure activities have been completed.

☐ Closure Completion Date:

22.

**Closure Method:**

- ☐ Waste Excavation and Removal ☐ On-Site Closure Method ☐ Alternative Closure Method ☐ Waste Removal (Closed-loop systems only)  
☐ If different from approved plan, please explain

23

**Closure Report Regarding Waste Removal Closure For Closed-loop Systems That Utilize Above Ground Steel Tanks or Haul-off Bins Only:**

**Instructions:** Please identify the facility or facilities for where the liquids, drilling fluids and drill cuttings were disposed. Use attachment if more than two facilities were utilized.

Disposal Facility Name: Disposal Facility Permit Number:

Disposal Facility Name: Disposal Facility Permit Number:

Were the closed-loop system operations and associated activities performed on or in areas that will not be used for future service and operations?

☐ Yes (If yes, please demonstrate compliance to the items below) ☐ No

Required for impacted areas which will not be used for future service and operations:

- ☐ Site Reclamation (Photo Documentation)  
☐ Soil Backfilling and Cover Installation  
☐ Re-vegetation Application Rates and Seeding Technique

24.

**Closure Report Attachment Checklist:** Instructions: Each of the following items must be attached to the closure report. Please indicate, by a check mark in the box, that the documents are attached.

- ☐ Proof of Closure Notice (surface owner and division)  
☐ Proof of Deed Notice (required for on-site closure)  
☐ Plot Plan (for on-site closures and temporary pits)  
☐ Confirmation Sampling Analytical Results (if applicable)  
☐ Waste Material Sampling Analytical Results (required for on-site closure)  
☐ Disposal Facility Name and Permit Number  
☐ Soil Backfilling and Cover Installation  
☐ Re-vegetation Application Rates and Seeding Technique  
☐ Site Reclamation (Photo Documentation)

On-site Closure Location: Latitude Longitude NAD: ☐ 1927 ☐ 1983

25.

**Operator Closure Certification:**

I hereby certify that the information and attachments submitted with this closure report is true, accurate and complete to the best of my knowledge and belief. I also certify that the closure complies with all applicable closure requirements and conditions specified in the approved closure plan.

Name (Print): Title

Signature: Date:

e-mail address: Telephone:

DISTRICT II  
1301 W Grand Avenue, Artesia, NM 88210

DISTRICT III  
1000 Rio Brazos Rd., Aztec, NM 87410

DISTRICT IV  
1220 South St Francis Dr., Santa Fe, NM 87505

# OIL CONSERVATION DIVISION

1220 South St Francis Dr  
Santa Fe, NM 87504-2088

Submit to Appropriate District Office  
State Lease - 4 Copies  
Fee Lease - 3 Copies

☐ AMENDED REPORT

## WELL LOCATION AND ACREAGE DEDICATION PLAT

1 API Number		2 Pool Code 71520		3 Pool Name Barker Creek - Dakota	
4 Property Code 18725		5 Property Name UTE MOUNTAIN UTE			6 Well Number 101
7 OGRID No 14538		8 Operator Name Burlington Resources Oil and Gas Company, LP			9 Elevation 6222'

### 10 Surface Location

UL or lot no	Section	Township	Range	Lot Idn	Feet from the	North/South line	Feet from the	East/West line	County
G	17	32-N	14-W		1840	NORTH	1865	EAST	SAN JUAN

### 11 Bottom Hole Location If Different From Surface

UL or lot no	Section	Township	Range	Lot Idn	Feet from the	North/South line	Feet from the	East/West line	County

12 Dedicated Acres E - 160	13 Joint or Infill	14 Consolidation Code	16 Order No
-------------------------------	--------------------	-----------------------	-------------

NO ALLOWABLE WILL BE ASSIGNED TO THIS COMPLETION UNTIL ALL INTERESTS HAVE BEEN CONSOLIDATED OR A NON-STANDARD UNIT HAS BEEN APPROVED BY THE DIVISION

16

FD 3 1/4" AC 1986 BLM	N 89°59'51" W 2638 35' (M)	FD 3 1/4" AC 1986 BLM
	1840' 1865'	S 00°00'01" E 2640 15' (M)
<p><b>SURFACE LOCATION</b> LAT: 36.99013° N (NAD 83) LONG: 108.32995° W. (NAD 83) LAT 36°59'24.48" N (NAD 27) LAT. 108°19'45.55" W (NAD 27)</p>		
<p>C.O.P. 1805'</p>		
<p>FD. 3 1/4" AC 1986 BLM</p>		
<p><b>CENTER OF PIT</b> LAT: 36.99006° N. (NAD 83) LONG: 108.32974° W. (NAD 83) LAT: 36°59'24.25" N (NAD 27) LAT: 108°19'44.77" W. (NAD 27)</p>		

### OPERATOR CERTIFICATION

I hereby certify that the information contained here is true and complete to the best of my knowledge, belief, and that this organization either owns a working interest or unleased mineral interest in the land including the proposed bottom hole location or has right to drill this well at this location pursuant to contract with an owner of such a mineral or working interest, or to a voluntary pooling agreement or a compulsory pooling order heretofore entered by the division.

*Catherine Smith*  
Signature Date 8/18/08  
Catherine Smith  
Printed Name

### 18 SURVEYOR CERTIFICATION

I hereby certify that the well location shown on this was plotted from field notes of actual surveys made by me or under my supervision, and that the same is true and correct to the best of my knowledge and belief.

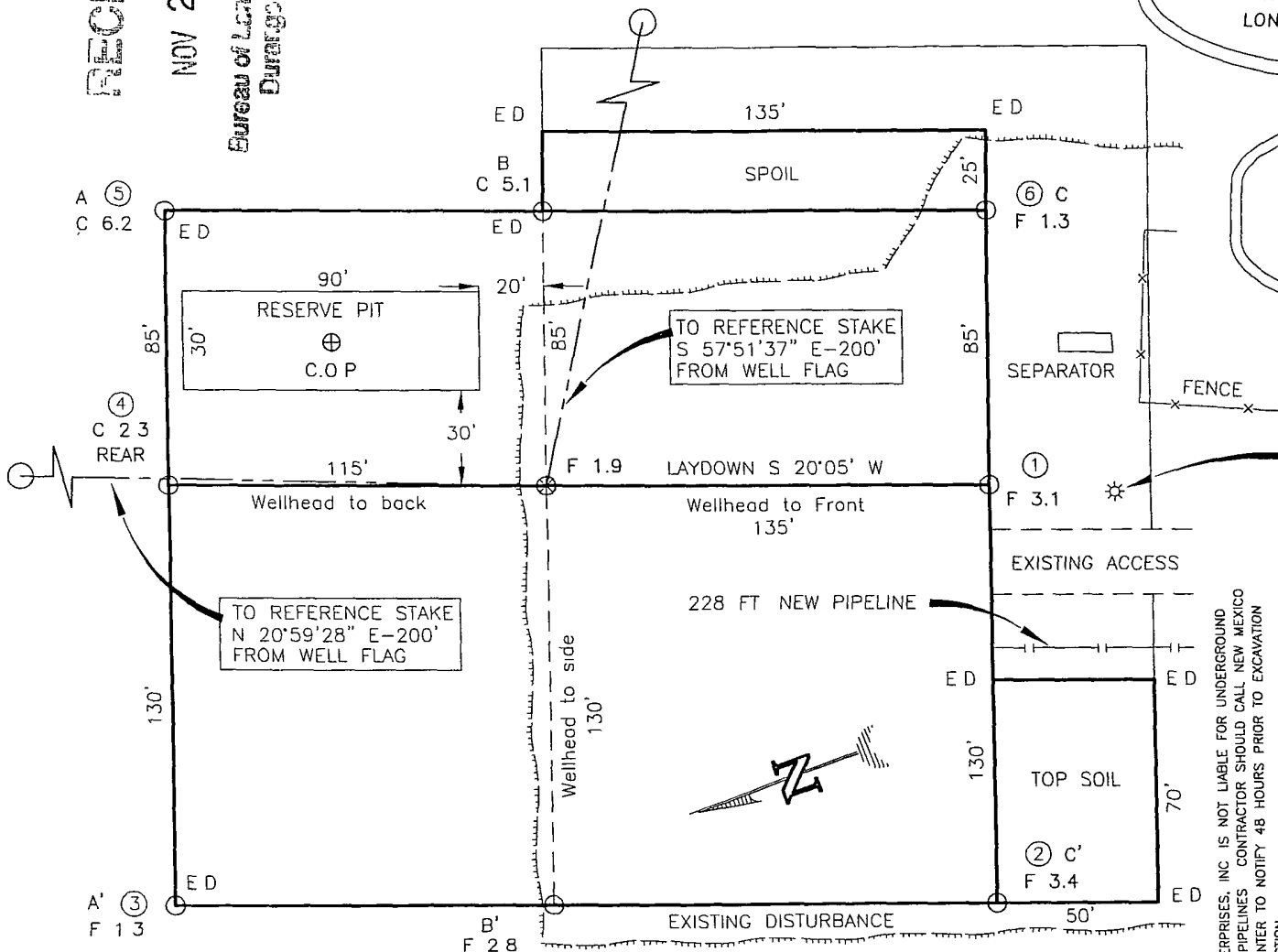
MAY 21 2008  
Date of Survey  
Signature and Seal of Professional Surveyor:  
8894  
Certificate Number

RECEIVED

NOV 24 2008

**BURLINGTON RESOURCES OIL & GAS COMPANY LP**  
**UTE MOUNTAIN UTE No. 101, 1840 FNL 1865 FEL**  
 SECTION 17, T-32-N, R-14-W, N.M.P.M.,  
 SAN JUAN COUNTY, NEW MEXICO  
 GROUND ELEVATION: 6222'  
 DATE: SEPTEMBER 17, 2008

Bureau of Land Management  
 Durango Colorado



NOTE  
 DAGGETT ENTERPRISES, INC IS NOT LIABLE FOR UNDERGROUND  
 UTILITIES OR PIPELINES. CONTRACTOR SHOULD CALL NEW MEXICO  
 ONE CALL CENTER TO NOTIFY 48 HOURS PRIOR TO EXCAVATION  
 OR CONSTRUCTION

WELL FLAG  
 NAD 83  
 LAT. = 36.99013° N.  
 LONG. = 108.32995° W.  
 NAD 27  
 LAT. = 36°59'24.48" N.  
 LONG. = 108°19'47.85" W.

CENTER OF PIT  
 ELEV. 6227'  
 NAD 83  
 LAT. = 36.99026° N.  
 LONG. = 108.32974° W.  
 NAD 27  
 LAT = 37°59'24 93" N  
 LONG = 108°19'47 06" W

0 25 50  
 SCALE 1"=50'

PAGE 1 OF 2

REVISION	DATE	REVISED BY
PER BIA ONSITE	11/21/08	B.K
PER BIA ONSITE	10/28/08	B.K
PER BLM ONSITE	10/13/08	GV
PAD DIMENSION CHANGE	09/18/08	B.K
CHANGE PIT SIZE	09/09/08	B.K
PAD DIMENSION CHANGE	09/04/08	B.K
ADD T.U.A. (SPOIL/TOP SOIL)	08/28/08	B.K

Daggett Enterprises, Inc.  
 Surveying and Oil Field Services  
 P O Box 510 • Farmington, NM 87499  
 Phone (505) 328-1772 • Fax (505) 326-8019  
 NEW MEXICO L.S. No. 8894



DRAWN BY: B.K  
 ROW: HTG084

CARLE HTG084\_PL8  
 DATE: 07/16/08

NOTE (E D -EDGE OF CONSTRUCTION)

**BURLINGTON RESOURCES OIL & GAS COMPANY LP**  
**UTE MOUNTAIN UTE No. 101, 1840 FNL 1865 FEL**  
 SECTION 17, T-32-N, R-14-W, N.M.P.M.  
 SAN JUAN COUNTY, NEW MEXICO  
 GROUND ELEVATION: 6222'  
 DATE: SEPTEMBER 17, 2008

WELL FLAG  
 NAD 83  
 LAT. = 36.99013° N.  
 LONG. = 108.32995° W.  
 NAD 27  
 LAT. = 36°59'24.48" N.  
 LONG. = 108°19'47.85" W.


TOTAL NEW PAD AREA = 0.65 ACRES  
 TOTAL EXISTING DISTURBANCE = 0.75 ACRES  
 TOTAL NEW PIPELINE & ACCESS AREA 228' X 40' = 0.21 ACRES  
 TOTAL PERMITTED AREA = 1.61 ACRES  
 (PERMITTED AREA INCLUDES PAD, SPOIL, TOPSOIL, PIPELINE, & ACCESS)

**NOTE.**

- 1) ESTIMATED VOLUMES CALCULATED BY AVERAGE END AREA AT CROSS SECTION SHOWN
- 2) RESERVE PIT DIKE TO BE 6' ABOVE DEEP SIDE (OVERFLOW - 3' WIDE AND 1' ABOVE SHALLOW SIDE) BLOW PIT OVERFLOW PIPE HALFWAY BETWEEN TOP AND BOTTOM AND TO EXTEND OVER PLASTIC LINER AND INTO BLOW PIT
- 3) DAGGETT ENTERPRISES, INC IS NOT LIABLE FOR UNDERGROUND UTILITIES OR PIPELINES CONTRACTOR SHOULD CALL UTILITY NOTIFICATION CENTER OF NEW MEXICO TO BE NOTIFIED 48 HOURS PRIOR TO EXCAVATION OR CONSTRUCTION

PAGE 2 OF 2

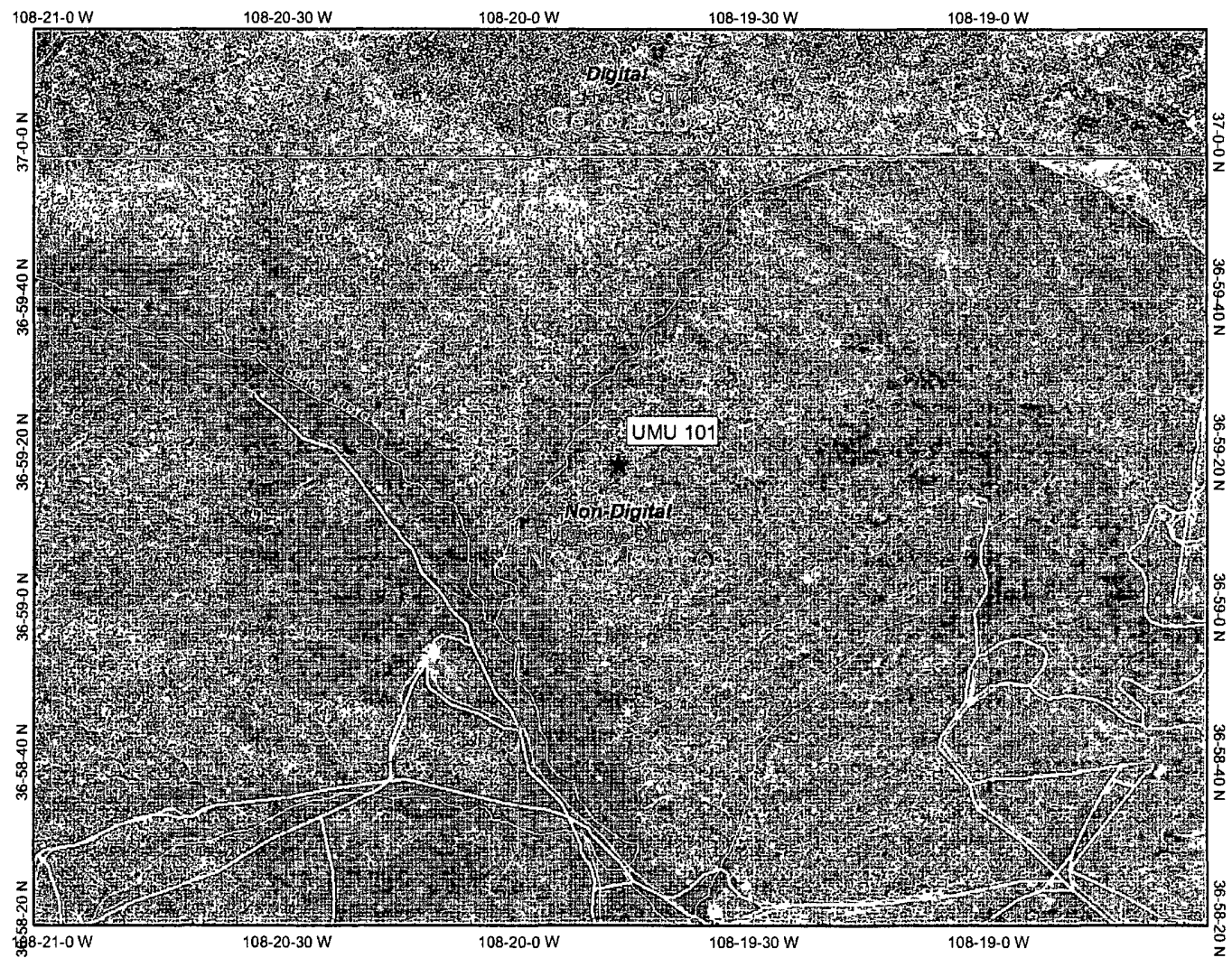
REVISION	DATE	REVISED BY
PER BIA ONSITE	10/22/08	B K
PER BLW ONSITE	10/13/08	CV
PAD DIMENSION CHANGE	09/19/08	B K
PAD DIMENSION CHANGE	09/04/08	B K
ADD TUA (SPOIL/TOP SOIL)	08/28/08	B K



**Daggett Enterprises, Inc.**  
 Surveying and Oil Field Services  
 P O Box 510 • Farmington, NM 87499  
 Phone (505) 326-1772 • Fax (505) 326-6019  
 NEW MEXICO L.S. No. 8894

DRAWN BY: B K	CADFILE: HT00B4_PadNotes
ROW# HT00B4	DATE: 07/15/08

# UMU 101 USGS TOPO MAP



## Legend

- Interstate
- Major Roads
- Other Road
- Interstate
- State highway
- US highway
- Roads
- Cities
- USGS Quad Index 24K
- Lower 48 Wetland Polygons
- Estuarine and Marine Deepwater
- Estuarine and Marine Wetland
- Freshwater Emergent Wetland
- Freshwater Forested/Shrub Wetland
- Freshwater Pond
- Lake
- Other
- Riverine
- Lower 48 Available Wetland Data
- Non-Digital
- Digital
- No Data
- Scan
- NHD Streams
- Counties 100K
- States 100K
- South America
- North America



Scale: 1:25,000

This map is a user generated static output from an Internet mapping site and is for general reference only. Data layers that appear on this map may or may not be accurate, current, or otherwise reliable. THIS MAP IS NOT TO BE USED FOR NAVIGATION.

Map center: 36° 59' 17" N, 108° 19' 47" W

Ute Mountain Ute #101

No Information Available

Ute Mountain  
Indian Reservation  
(AREA NOT INCLUDED)



APPROXIMATE SCALE

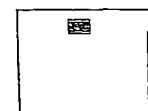
2000 0 2000 FEET

NATIONAL FLOOD INSURANCE PROGRAM

**FIRM**  
FLOOD INSURANCE RATE MAP

SAN JUAN COUNTY,  
NEW MEXICO  
UNINCORPORATED AREAS

PANEL 300 OF 1450  
(SEE MAP INDEX FOR PANELS NOT PRINTED)



PANEL LOCATION

COMMUNITY-PANEL NUMBER  
350064 0300 B

EFFECTIVE DATE:  
AUGUST 4, 1988



Federal Emergency Management Agency

This is an official copy of a portion of the above referenced flood map. It was extracted using F-MIT On-Line. This map does not reflect changes or amendments which may have been made subsequent to the date on the title block. For the latest product information about National Flood Insurance Program flood maps check the FEMA Flood Map Store at [www.msc.fema.gov](http://www.msc.fema.gov)

## **UMU 101**

### **Siting Criteria Compliance Demonstration & Hydro Geologic Analysis**

The subject well is not located in an unstable area. Visual inspection has been performed: location is not within 300' of flowing watercourse or 200' from any other water course or lake bed; not within 300' of any permanent residence, school, or institution; not within 500' of any private water well or spring. The topographic map confirms visual inspection of water course. FEMA Map and iWaters search do not include any information regarding the Ute Mountain Ute lands.

## ***Hydrogeological Report for Ute Mountain Ute #101***

### **Regional Hydrogeological Context:**

The San Jose Formation of Eocene age occurs in New Mexico and Colorado, and its outcrop forms the land surface over much of the eastern half of the central basin. It overlies the Nacimiento Formation in the area generally south of the Colorado-New Mexico State line and overlies the Animas Formation in the area generally north of the State line.

The San Jose Formation was deposited in various fluvial-type environments. In general, the unit consists of an interbedded sequence of sandstone, siltstone, and variegated shale. Thickness of the San Jose Formation generally increases from west to east (200 feet in the west and south to almost 2,700 feet in the center of the structural basin). Ground water is associated with alluvial and fluvial sandstone aquifers. Thus, the occurrence of ground water is mainly controlled by the distribution of sandstone in the formation. The distribution of such sandstone is the result of original depositional extent plus any post-depositional modifications, namely erosion and structural deformation. Transmissivity data for San Jose Formation are minimal. Values of 40 and 120 feet squared per day were determined from two aquifer tests (Stone et al., 1983, table 5). The reported or measured discharge from 46 water wells completed in San Jose Formation ranges from 0.15 to 61 gallons per minute and the median is 5 gallons per minute. Most of the wells provide water for livestock and domestic use.

The San Jose Formation is a very suitable unit for recharge from precipitation because soils that form on the unit are sandy and highly permeable and therefore readily absorb precipitation. However, low annual precipitation, relatively high transpiration and evaporation rates, and deep dissection of the San Jose Formation by the San Juan River and its tributaries all tend to reduce the effective recharge to the unit.

Stone et al., 1983, Hydrogeology and Water Resources of the San Juan Basin, New Mexico: Socorro, New Mexico Bureau of Mines and Mineral Resources Hydrologic Report 6, 70 p.



---

## New Mexico Office of the State Engineer

# Wells with Well Log Information

---

No wells found.

Basin/County Search:

Basin: San Juan

County: San Juan

Subbasin: La Plata

PLSS Search:

Township: 32N

Range: 14W



---

*New Mexico Office of the State Engineer*  
**Point of Diversion by Location**  
(with Owner Information)

---

No PODs found.

POD Search:

POD Basin: San Juan

Basin/County Search:

Basin: San Juan

County: San Juan

Subbasin: La Plata

PLSS Search:

Township: 32N

Range: 14W

---

data is furnished by the NMOSE/ISC and is accepted by the recipient with the expressed understanding that the OSE/ISC make no warranties, expressed or implied, concerning the accuracy, completeness, reliability, usability, or suitability for any particular purpose of the data

---

5/09 1:34 PM

Page 1 of 1

POINT OF DIVERSION BY LOCATION



# *New Mexico Office of the State Engineer* **Water Column/Average Depth to Water**

No records found.

Basin/County Search:

Basin: San Juan

County: San Juan

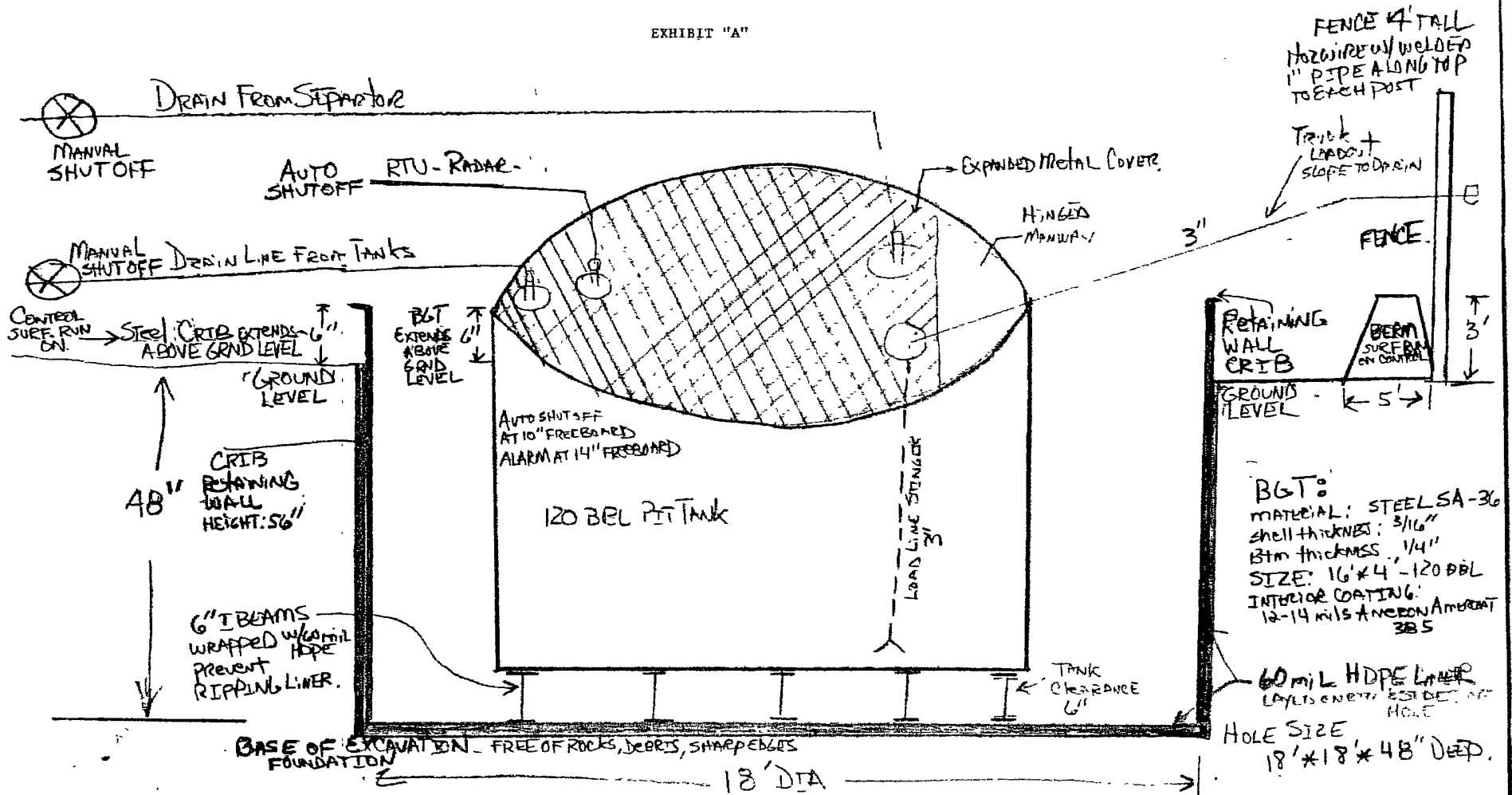
Subbasin: La Plata

PLSS Search:

Township: 32N

Range: 14W

EXHIBIT "A"



60 mil HDPE



Table 1.1: Minimum Values for Smooth Black-Surfaced HDPE Geomembranes

TESTED PROPERTY	TEST METHOD	FREQUENCY	MINIMUM VALUE				
Product Code			HDE 070A000	HDE 040A000	HDE 060A000	HDE 080A000	
Thickness, (minimum average) mil (mm)	ASTM D 5199	Every roll	30 (0.76)	40 (1.00)	60 (1.50)	80 (2.00)	100 (2.54)
Lowest individual reading (+10%)			27 (0.69)	36 (0.91)	54 (1.40)	72 (1.80)	90 (2.29)
Density, g/cm <sup>3</sup>	ASTM D 1505	200,000 lb	0.94	0.94	0.94	0.94	0.94
Tensile Properties (each direction)	ASTM D 6892, Type IV	20,000 lb					
Strength at Break, lb/in (N/mm)	Dumbbell, 2 (pm)		114 (20)	152 (27)	228 (40)	304 (53)	396 (70)
Strength at Yield, lb/in (N/mm)			89 (11)	84 (15)	128 (22)	168 (29)	224 (40)
Elongation at Break, %	G.L. 2.0 in (51 mm)		700	700	700	700	700
Elongation at Yield, %	G.L. 1.3 in (33 mm)		12	12	12	12	12
Tear Resistance, lb (N)	ASTM D 1004	45,000 lb	21 (93)	28 (125)	42 (187)	58 (258)	79 (350)
Puncture Resistance, lb (N)	ASTM D 4833	45,000 lb	54 (240)	72 (320)	108 (480)	144 (640)	180 (800)
Carbon Black Content, %	ASTM D 1603/4218	20,000 lb	2.0	2.0	2.0	2.0	2.0
Carbon Black Dispersion	ASTM D 5595	45,000 lb	+ Note 1	+ Note 1	+ Note 1	+ Note 1	+ Note 1
Notched Constant Tensile Load, hr	ASTM D 5387, Appendix	200,000 lb	300	300	300	300	300
REFERENCE PROPERTY	TEST METHOD	FREQUENCY	NOMINAL VALUE				
Oxidative Induction Time, min	ASTM D 3895, 200° C; C <sub>1</sub> 1 atm	200,000 lb	>100	>100	>100	>100	>100
Roll Length <sup>(1)</sup> (approximate), ft (m)			1,120 (341)	870 (265)	560 (171)	420 (128)	240 (73)
Roll Width <sup>(1)</sup> , ft (m)			22.5 (6.9)	22.5 (6.9)	22.5 (6.9)	22.5 (6.9)	22.5 (6.9)
Roll Area, ft <sup>2</sup> (m <sup>2</sup> )			25,200 (2,341)	19,575 (1,810)	12,500 (1,171)	9,450 (872)	5,265 (487)

## NOTES:

- + Note 1: Dispersion only applies to near spherical agglomerates. 9 of 10 views shall be Category 1 or 2. No more than 1 view from Category 3.
- GSG HD is available in rolls weighing about 3,900 lb (1,769 kg).
- All GSG geomembranes have dimensional stability of  $\pm 2\%$  when tested with ASTM D 1204 and LTB of  $<77^\circ\text{C}$  when tested with ASTM D 746.
- <sup>(1)</sup> Roll lengths and widths have a tolerance of  $\pm 1\%$ .
- \* Modified

**Huntington Energy, L.L.C.**  
**Below Grade Tank Design and Construction**  
**San Juan Basin**

The design and construction requirements for below-grade tanks include the general provisions of Paragraphs A, C, D, and E of 19.15.17.11 NMAC and the specific requirements of Paragraph I of 19.15.17.11 NMAC. In accordance with Section 11 of 19.15.17 NMAC, the following include all of the appropriate provisions for the design and construction of below grade tanks (BGT) on Huntington Energy, L.L.C. (HE) locations.

General Plan:

1. HE will design and construct a BGT to contain liquids and to prevent contamination of fresh water and protect the public health and environment.
2. Huntington Energy, L.L.C. (HE) shall have signs at the sites as per 19.15.16.8 NMAC of which an existing well is the same operator-Huntington Energy. The sign shall provide the following: Operator's name, location of site by quarter-quarter or unit letter, section, township and range, and emergency numbers. If in case the Below Grade Tank (BGT) does not co-exist with an existing well, the sign shall comply with subsection C of 19.15.17.11 NMAC.
3. HE shall fence the BGT in a manner that prevents unauthorized access and shall maintain the fence in good repair. We shall ensure that all gates associated with the fence are closed and locked when responsible personnel are not on-site.

HE shall construct fencing around the BGT using 4' hogwire fencing topped with two strands of barbed wire, or with a pipe top rail- an alternative to the requirements as set out by Subsection D of 19.15.17.11 - and should provide long term protection and less maintenance. A six foot chain link fence topped with three strands of barbed wire will be used if the well location is within 1000' of a permanent residence, school, hospital, institution, or church.

4. HE will construct an expanded metal covering on the top of the BGT.
5. HE shall ensure that a below-grade tank is constructed of materials resistant to the below-grade tank's particular contents and damage from sunlight.
6. HE will construct a properly constructed foundation consisting of a firm, unyielding base, smooth and free of rocks, debris, sharp edges, or irregularities to prevent the liner's rupture or tear. Once the hole is constructed with a backhoe and firmed, shovels are used to smooth and remove all rocks, debris, or edges that might rupture the liner. In addition, I-beams placed below the tank are wrapped with 60 mil HPDE material to prevent any punctures of liner.
7. HE shall construct a BGT to prevent overflow and the collection of surface water run-on by constructing an inner crib, which the height extends above ground level by 6" preventing water from entering. The BGT is also elevated 6" above ground level as well. The berm, which is constructed approximately 3' tall by 5' wide for containment and any fluids entering outside of the fenced area. Auto shut-off controls are installed using a radar that is set at 14" of freeboard. When water level reaches that point, a signal is sent

and sends an alarm to the pumper. If 10" of freeboard is reached, a signal is sent to a valve which shuts the gas line on discharge of separator. This in turn causes a pressure increase to 200 psi, which closes the motor valve on the inlet side of the separator, shutting the well down. A manual valve is also placed on the 2" line from separator to BGT shutting off any water to BGT.

8. HE will construct a BGT system employing an external crib that stands between the wall of the foundation of the hole and the BGT. The crib will be placed on top of the 60 mil liner and will extend 6" above ground level. It is made of steel with a grey coating. The BGT side walls will be visible and open for visual inspection. Dirt is placed outside of crib filling void. (Liner is extended to ground level on outside of crib.)

The BGT will be steel and elevated 6" above underlying ground surface using 6" I-Beam (I-Beams wrapped to prevent edges from rupturing the liner), which elevates the BGT 6" above ground level to prevent surface run-on.

9. HE shall equip below-grade tanks designed in this manner with a properly operating automatic high-level shut-off control device and manual controls to prevent overflows. Auto shut-off controls are installed using a radar that is set at 14" of freeboard and when water level reaches that point, a signal is sent and it in turns sends an alarm to the pumper. If 10" of freeboard is reached, a signal is sent to a valve which shuts the gas line on discharge of separator. This in turn causes a pressure increase to 200 psi which closes the motor valve on the inlet side of separator shutting the well down. A manual valve is also placed on the 2" line from separator to BGT shutting off any water to BGT.
10. The geomembrane liner shall consist of 30-mil flexible PVC or 60-mil HDPE liner, or an equivalent liner material that the appropriate division district office approves. The geomembrane liner shall have a hydraulic conductivity no greater than  $1 \times 10^{-9}$  cm/sec. The geomembrane liner shall be composed of an impervious, synthetic material that is resistant to petroleum hydrocarbons, salts and acidic and alkaline solutions. The liner material shall be resistant to ultraviolet light. Liner compatibility shall comply with EPA SW-846 method 9090A.

HE will demonstrate to the NMOCD that the liner complies with the specifications within Subparagraph (a) of Paragraph (4) of Subsection I of 19.15.17.11 NMAC and obtain approval from the NMOCD prior to the installation of the new design.

11. HE BGT's constructed and installed prior to June 16, 2008, that do not comply with 19.15.17.11 NMAC Paragraph 1-4 of Subsection I, shall be equipped or retrofitted or closed within 5 years after June 16, 2008. If the existing BGT does not demonstrate integrity, the BGT will be removed and a BGT that meets criteria set forth by Paragraphs 1 thru 4 of Subsection I of 19.15.17.11 NMAC will be installed.

**Huntington Energy, L.L.C.**  
**Below Grade Tank Operational Plan**  
**San Juan Basin**

The operation requirements for below-grade tanks include the general provisions of Paragraph A of 19.15.17.12 NMAC and the specific requirements of Paragraph E of 9.15.17.12 NMAC.

General Plan:

1. HE will operate and maintain a BGT to contain liquids and solids and prevent contamination of fresh water and protect public health and environment. Maintaining and operating all equipment in a satisfactory working order is accomplished by daily and monthly inspections to assure all systems are performing. These inspections should include: operations of equipment-functioning properly, observance of any surface run-on, checking for visible leaks, assure correct freeboard of liquids in BGT, berms integrity is good, fencing in compliance, assure no oil sludge, miscellaneous, expanded metal cover integrity is good, and all signs are in order.
2. HE shall construct a BGT to prevent overflow and the collection of surface water run-on by constructing an inner crib which the height extends above ground level by 6" preventing water from entering. The BGT is also elevated 6" above ground level as well as the berm constructed approximately 3' tall by approximately 5' wide for containment and any fluids entering outside of fenced area. Auto shut-off controls are installed using a radar that is set at 14" of freeboard and when water level reaches that point, a signal is sent and it in turns sends an alarm to the pumper. If 10" of freeboard is reached, a signal is sent to a valve which shuts the gas line on discharge of separator. This in turn causes a pressure increase to 200 psi which closes the motor valve on the inlet side of separator shutting the well down. A manual valve is also placed on the 2" line from separator to BGT shutting off any water to BGT.

Each lease operator gets a daily report containing water levels in each location. If auto shut-off control shuts well in, well is not opened until sufficient freeboard is reestablished and no alarms are activated. HE will maintain a 14" freeboard policy for alarm notification and a complete shut down when freeboard reaches 10" from top of BGT.

Berms will be maintained at 5' wide and 3' tall to assure prevention of surface run on and containment.

3. HE shall continuously remove any visible or measurable layer of oil from the fluid surface of a below-grade tank in an effort to prevent significant accumulation of oil over time.
4. HE monthly inspection report involves both lease operator and foreman reviewing each report monthly to assure integrity of the BGT system. This includes equipment functioning correctly, observance of any surface run-on, spills, or leak detection, check freeboard of liquids in BGT, berm integrity, all fencing in good condition, all gates in working condition, expanded metal cover in good condition, remove any visible layer of sludge from fluid level in tank, and document review on monthly gauge sheet of each

BGT system. If any issue arises; immediate action should commence to repair or replace in order to prevent any contamination of fresh water and protect public health and the environment.

5. If a BGT develops a leak, or if any penetration of the pit liner or BGT occurs below the liquid's surface, HE will remove all liquid above the damage or leak line within 48 hours. HE will notify the appropriate division district office within 48 hours of the discovery and repair the damage or replace the pit liner or BGT.

Existing BGT's installed prior to June 16, 2008, shall comply with Paragraph (1) through (4) of Subsection I of 19.15.17.11 NMAC. If existing BGT does not meet standards, HE will retrofit, remove or replace as per approved Exhibit "A" Design Drawing.

6. HE Operations Plan specifies that the auto shut-off system will send an alarm to HE lease operator and foremen when the freeboard liquid level is 14" from the top of BGT and the auto system will shut in system at 10" of freeboard. A manual valve is in place for complete shut down if needed.
7. HE standard operating procedures will comply with Subsection A of 19.15.17.12 NMAC in accordance with the following requirements:

- 1) Operate and maintain BGT to contain liquids and maintain integrity of the liner, liner system and secondary containment (crib) to prevent contamination of fresh water and protect public health and environment. Daily and written monthly reviews will be executed to assure system is maintained and complies with all Division rules. Records will be kept a minimum of 5 years.

- 2) HE shall not store or discharge any hazardous wastes into a BGT.

**Huntington Energy, L.L.C.**  
**Below Grade Tank Closure Plan**  
**San Juan Basin**

The closure requirements for below-grade tanks include the general provisions of Paragraphs A, G, H, I, J, and K of 19.15.17.13 NMAC and the specific requirements of Paragraph E of 9.15.17.13 NMAC.

Closure Timelines:

1. HE shall close an existing BGT within the time periods provided in 19.15.17.13 NMAC, or by and earlier date that the division requires because of imminent danger to fresh water, public health or the environment. HE will close an existing BGT that does not meet the requirements of Paragraphs (1) through (4) of Subsection I of 19.15.17.11 NMAC or is not included in Paragraph 5 of Subsection I of 19.15.17.11 NMAC within 5 years after June 16, 2008, if not retrofitted to comply with Paragraph (1) through (4) of Subsection I of 19.15.17.11 NMAC.

HE shall close a permitted BGT within 60 days of cessation of the BGT's operation or As required by the provisions of Subsection B of 19.15.17.17 NMAC in accordance with a closure plan the Division District Office approves.

2. HE shall submit closure notice prior to the implementation of any closure operations to the Division District Office and surface owners. HE shall notify surface owners by certified mail, return receipt requested. Evidence of mailing of the notice to the address of the surface owner shown in the county tax records shall be provided in the Closure Report. HE will notify the Division District office at least 72 hours, but not more than one week prior to any closure operation. All operator information shall include the operator's name and the location to be closed by unit letter, section, township and range. If associated with a particular well, the notice shall include the well's name, number and API number.

Closure Method & Procedures:

1. Remove liquids and sludge from a BGT prior to implementing a closure method. These will be disposed in facility IEI, Permit # 01001010B for sludge, and liquids will be disposed at the TNT Environmental, permit # NM 01-0008 or Basin Disposal, Inc., permit # NM-01-005.
2. HE will obtain prior approval from the OCD to dispose, recycle, reuse, or reclaim the BGT and provide documentation of the final disposition of the BGT in the Closure Report.
3. All on-site related equipment with a BGT shall be removed unless equipments is required for some other purpose.
4. If the liner material requires disposal, HE will clean the liner (as per subparagraph (m) of paragraph (1) of Subsection C of 19.15.35.8 NMAC), and can be accepted at a solid waste facility at San Juan County Regional Landfill.
5. HE shall test the soils beneath the below-grade tank to determine whether a release has occurred. HE shall collect, at a minimum, a five point, composite sample; collect individual grab samples from any area that is wet, discolored or showing other evidence of a release; and analyze for BTEX, TPH and chlorides to

demonstrate that the benzene concentration, as determined by EPA SW-846 methods 8021B or 8260B or other EPA method that the division approves, does not exceed 0.2mg/kg; total BTEX concentration, as determined by EPA SW-846 methods 8021B or 8260B or other EPA method that the division approves, does not exceed 50 mg/kg; the TPH concentration, as determined by EPA method 418.1 or other EPA method that the division approves, does not exceed 100 mg/kg; and the chloride concentration, as determined by EPA method 300.1 or other EPA method that the division approves, does not exceed 250 mg/kg, or the background concentration, whichever is greater. HE shall notify the division of its results on form C-141.

6. If we determine a release has occurred, we will comply with 19.15.29 NMAC and 19.15.30 NMAC.
7. If sampling program demonstrates that release has not occurred or that any release does not exceed the concentrations specified in Paragraph (4) of Subsection E of 19.15.17.13 NMAC, then HE shall backfill the excavation with compacted, non-waste earthen material, construct a division prescribed soil cover, and re-contour and re-vegetate the site, as per Subsection G, H and I of 19.15.17.13 NMAC.
8. Once HE has closed the BGT location, including associated access roads to a safe and stable condition that blends with the surrounding undisturbed area, HE will then restore the surface are to prior conditions before operations as provided in Subsection H of 19.15.17.13 NMAC.
9. The soil cover for closure shall consist of the background thickness of topsoil or one foot of suitable material to establish vegetation at the site, whichever is greater. HE will construct the soil cover to the site's existing grade and prevent ponding of water and erosion of the cover material.
10. Re-vegetation: the first growing season after HE closes a BGT, HE shall seed or plant the disturbed area. HE shall accomplish seeding by drilling on the contour whenever practical or by other division-approved methods. HE shall obtain vegetative cover that equals 70% of the native perennial vegetative cover (un-impacted by overgrazing, fire or other intrusion damaging to native vegetation) consisting of at least three native pant species, including at lease one grass, but not including noxious weeds, and maintain the cover through two successive growing seasons. During the two growing seasons that prove viability, there shall be no artificial irrigation of the vegetation. HE shall repeat seeding or planting until the required vegetative cover is achieved. HE shall notify the division when it has seeded or planted and when successful re-vegetation has occurred.
11. Closure Report: Within 60 days of closure, HE shall submit a closure report on form C-144/Checklist Box 24, with the following attachments: Proof of Closure Notice (surface owner and division); Proof of Deed Notice; Plot Plan, Confirmation Sampling Analytical Results (if applicable); Waste Material Sampling Analytical Results, Disposal Facility Name and Permit Number; Soil Backfilling and Cover Installation; Re-vegetation Application Rates and Seeding Technique; Site Reclamation (Photo Documentation); and Latitude and Longitude of site.

**HUNTINGTON ENERGY, L.L.C.**  
**Ute Mountain Ute**  
***Pit Design and Construction Plan***

In accordance with Rule 19.15.17, the following describes the design and construction of temporary pits for Huntington Energy.

General Plan

1. HE will design and construct a temporary pit to contain liquids and solids and prevent contamination of fresh water, protect public health and environment.
2. Topsoil will be stockpiled prior to construction in the construction zone for later use in restoration.
3. HE will post a well sign on the well site prior to constructing the temporary pit. The sign will list the operator, well location with section, township, range and emergency numbers. Signs will be no less than 12" x 24".
4. He will construct fences using 48" steel mesh field fence on the bottom with a single strand of barbed wire on top. T-posts will be installed every 12' and corners will be anchored using a secondary T-post. Temporary pits will be fenced at all times except when the front side of the fence will be temporarily removed for operating purposes.
5. The foundation and interior slopes of the temporary pit will be firm and free of rocks, debris, or any other irregularities to prevent liner failure.
6. HE shall construct the pit so the slopes are no steeper than 2 horizontal feet to 1 vertical foot.
7. Pit walls will be compressed following construction.
8. Temporary pits will be lined with a 20-mil, string reinforced, LLDPE liner, complying with EPA SW-846 method 9090A requirements.
9. Geotextile will be installed beneath the liner when rocks, debris, sharp edges or irregularities cannot be avoided.
10. All liners will be anchored in the bottom of a compacted earth-filled trench at least 18 inches deep.
11. HE will minimize liner seams and orient them up and down, not across a slope. Factory seams will be used when possible. Field seams will be overlapped four to six inches and will be placed parallel to the line of maximum slope. The number of field seams in corners and irregularly shaped areas will be minimized.
12. Liners shall be protected from any fluid force or mechanical damage through the use of mud pit slides, or a manifold system.
13. The pit shall be protected from run-off by constructing and maintaining diversion ditches around the location or around the perimeter of the pit when necessary.
14. The volume of the pit shall not exceed 10 acre-feet, including freeboard.

**HUNTINGTON ENERGY, L.L.C.**  
**Ute Mountain Ute**  
***Maintenance and Operating Plan***

In accordance with Rule 19.15.17, the following information described the operations and maintenance of temporary pits for Huntington Energy.

General Plan

1. HE will operate and maintain a temporary pit to contain liquids and solids and prevent contamination of fresh water and protect public health and environment.
2. HE will transfer liquids to pits ahead of the rigs when possible. All other drilling fluids will be disposed at IEI, Permit # 01001010B for sludge, and liquids will be disposed at Basin Disposal, Inc., permit # NM-01-005 and IEI, Permit # 01001010B.
3. HE will not discharge or store any hazardous waste in any temporary pit.
4. If any pit liner's integrity is compromised, or if any penetration of the liner occurs above the liquid's surface, then HE shall notify the Aztec Division office by phone or email within 48 hours of the discovery and repair the damage or replace the liner.
5. If a leak develops below the liquid's level, HE shall remove all liquids above the damaged liner within 48 hours and repair the damage. The Aztec Division office will be contacted by phone or email within 48 hours of the discovery for leaks less than 25 barrels. HE will contact the Aztec Division office within 24 hours of discovery of leaks greater than 25 barrels. Immediate verbal notification will be reported to the division's Environmental Bureau Chief.
6. The pit shall be protected from run-off by constructing and maintaining diversion ditches around the location or around the perimeter of the pit when needed.
7. Any visible layer of oil from the surface of the temporary pit after drilling or workover operation is complete will be immediately removed.
8. Only fluids from drilling or workover process will be discharged into a temporary pit.
9. HE will maintain the temporary pit free of miscellaneous solid waste or debris.
10. HE will inspect the temporary pit at least once daily during drilling or workover operations in order to comply with the plan. Inspections are logged on daily drilling reports.
11. After drilling or workover, HE will inspect the temporary pit weekly as long as liquids remain in the pit. A log of the inspections will be sent per request.
12. HE shall maintain at least two feet of freeboard for a temporary pit.
13. Liquids will be removed from the temporary pit within 30 days from the date the rig is released.

**Huntington Energy, L.L.C.**  
**San Juan Basin-Ute Mountain Ute**  
***Pit Closure Plan***

In accordance with Rule 19.15.17.12 NMAC the following information describes the closure requirements of temporary pits on Huntington Energy, L.L.C. (HE) locations. This is HE's standard procedure for all temporary pits. A separate plan will be submitted for any temporary pit which does not conform to this plan.

All closure activities will include proper documentation and be available for review upon request and will be submitted to OCD within 60 days of closure of pit. Closure report will be filed on C-144 and include the following:

- Details on Capping and Covering, where applicable
- Plot Plan (Pit Diagram)
- Inspection Reports
- Sampling Results
- C-105
- Copy of Deed Notice will be filed with County Clerk

General Plan:

1. All free standing liquids will be removed at the start of the pit closure process from the pit and disposed of in a division-approved facility or recycle, reuse or reclaim the liquids in a manner that the appropriate division district office approves. The facilities to be used for liquids will be IEI – NM-010010B & Basin Disposal permit # NM-01-00, and IEI will be used for solids (#01001010B).
2. The preferred method of closure for all temporary pits will be on-site burial, assuming that all the criteria listed in sub-section (B) of 19.15.17.13 are met
3. The surface owner shall be notified of HE's closing of the temporary pit.
4. Within 6 months of the rig off status occurring, HE will ensure that the temporary pits are closed, re-contoured and reseeded.
5. Notice of Closure will be given prior to closure to the Aztec Division office between 72 hours and one week via email, or verbally. The notification of closure will include the following:
  - i. Operator's name
  - ii. Location by Unit Letter, Section, Township, and Range, Well name and API number.
6. Liner of temporary pit shall be removed above "mud level" after stabilization. Removal of liner will consist of manually or mechanically cutting liner at mud level and removing all remaining liner. Care will be taken to remove all of the liner. All excessive liner will be disposed of at the San Juan County Landfill located on CR 3100.
7. Pit contents shall be mixed with non-waste containing earthen material in order to achieve the solidification process. The solidification process will be accomplished using a combination of natural drying and mechanically mixing. Pit contents will be mixed with non-waste, earthen material to a consistency that is deemed as safe and stable. The mixing ratio shall not exceed 3 parts clean soil to 1 part pit contents.
8. A five point composite sample will be taken of the pit using sampling tools and all samples tested per Subsection B of 19.15.17.13(B)(1)(b). In the event that the criteria are not met, all contents will be handled per Subparagraph (a) of Paragraph (1) of Subsection B of 19.15.17.13 i.e., dig and haul.

Components	Test Method	Limit (mg/kg)
Benzene	EPA SW-846 8021B or 8260B	0.2
BTEX	EPA SW-846 8021B or 8260B	50
TPH	EPA SW-846 418.1	2500
GRO/DRO	EPA SW-846 8015M	500
Chlorides	EPA 300.1	1000/500

9. Upon completion of solidification and testing standards being passed, the pit area will be backfilled with compacted, non-waste containing earthen material. A minimum of four feet of cover shall be achieved and the cover shall include one foot of suitable material to establish vegetation at the site, or the background thickness of topsoil, whichever is greater. If standard testing fails, HE will dig and haul all contents pursuant to 19.15.17.13.i.a After doing so, confirmation sampling will be conducted to ensure a release has not occurred.
10. During the stabilization process, if the liner is ripped by equipment, the Aztec OCD office will be notified within 48 hours and the liner will be repaired if possible. If the liner can not be repaired, then all contents will be excavated and removed.
11. Dig and Haul Material will be transported to IEI (Permit # 010010B).
12. Re-contouring of location will match fit, shape, line, form and texture of the surrounding. Reshaping will include drainage control, prevent ponding, and prevent erosion. Natural drainages will be unimpeded and water bars and/or silt traps will be placed in areas where needed to prevent erosion on a large scale. Final re-contour shall have a uniform appearance with smooth surface, fitting the natural landscape.
13. Notification will be sent to the OCD when the reclaimed area is seeded.
14. HE shall seed the disturbed areas the first growing season after the operator closes the pit. Seeding will be accomplished via drilling on the contour whenever practical or by other division-approved methods. BLM stipulated seed mixes will be used on federal lands. Vegetative cover will equal 70% of the native perennial vegetative cover (unimpacted) consisting of at least three native plant species, including at least one grass, but not including noxious weeds, and maintain that cover through two successive growing seasons. Repeated seeding or planting will be continued until successful vegetative growth occurs.

Type	Variety or Cultivator	PLS/A
Western Wheatgrass	Arriba	3.0
Indian Ricegrass	Paloma or Rimrock	3.0
Slender Wheatgrass	San Luis	2.0
Crested Wheatgrass	Hy-crest	3.0
Bottlebrush Squirreltail	Unknown	2.0
Four-wing Saltbrush	Delar	0 25

**Species shall be planted in pounds of pure live seed per acre:**

**Present Pure Live Seed (PLS) = Purity X Germination/100**

**Two lots of seed can be compared on the basis of PLS as follows:**

Source No. One (poor quality)

Purity 50 percent

Germination 40 percent

Percent PLS 20 percent

**5 lb bulk seed required to make  
1 lb PLS**

Source No. two (better quality)

Purity 80 percent

Germination 63 percent

Percent PLS 50 percent

**2 lb bulk seed required to make  
1 lb PLS**

15. The temporary pit will be located with a steel marker, no less than four inches in diameter, cemented in a hole three feet deep in the center of the onsite burial upon the abandonment of all the wells on the pad. The marker will be flush with the ground to allow access of the active well pad and for safety concerns. The marker will include a threaded collar to be used for future abandonment. The top of the marker will contain a welded steel 12" square plate that indicates the onsite burial of the temporary pit. The plate will be easily removable and a four foot tall riser will be threaded into the top of the collar marker and welded around the base with the operator's information at the time all wells on the pad are abandoned. The operator's information will include the following: Operator Name, Lease Name, Well Name and Number, Unit Number, Section, Township, Range and an indicator that the marker is an onsite burial location.

Google maps

To see all the details that are visible on the screen, use the "Print" link next to the map

*Ute Mountain Ute #101*

# UMU 101 Mines, Mills, and Quarries Web Map

## Mines, Mills & Quarries Commodity Groups

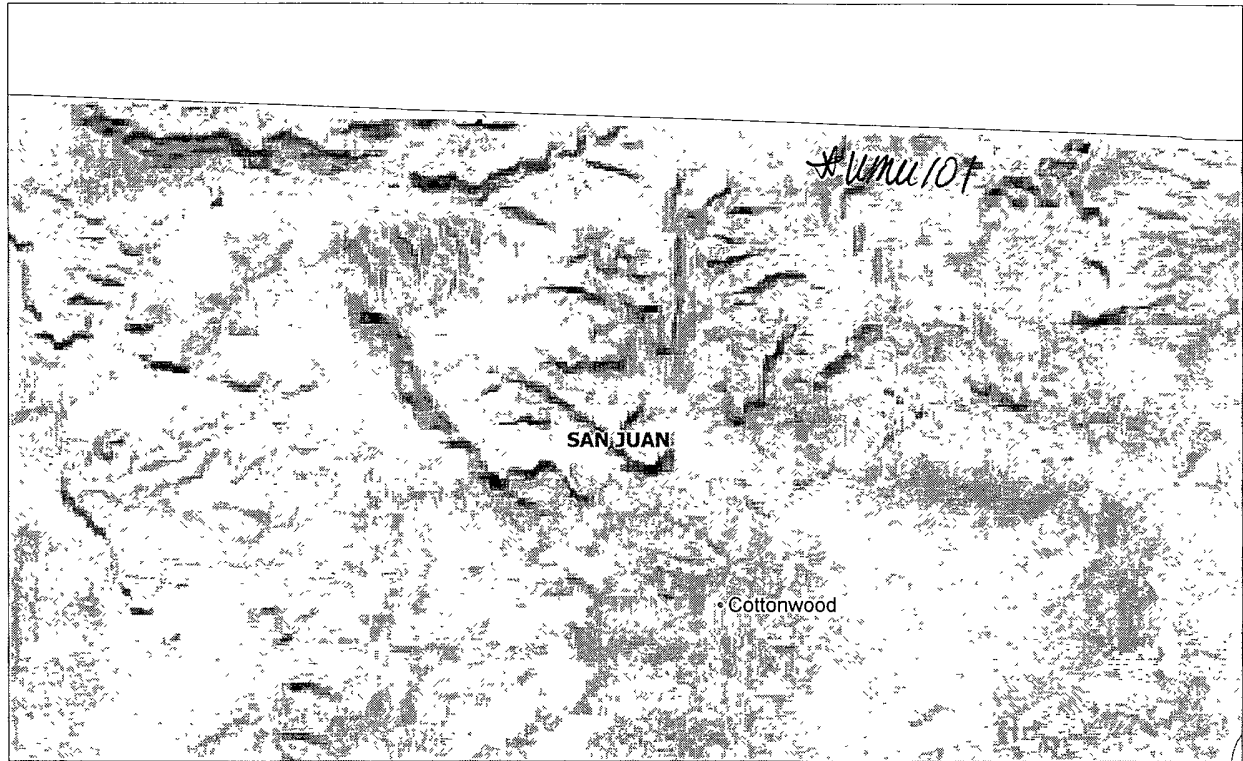
-  Aggregate & Stone Mines
-  Coal Mines
-  Industrial Minerals Mines
-  Industrial Minerals Mills
-  Metal Mines and Mill Concentrate
-  Potash Mines & Refineries
-  Smelters & Refinery Ops.
-  Uranium Mines
-  Uranium Mills

## Population

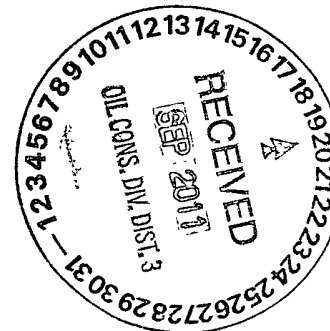
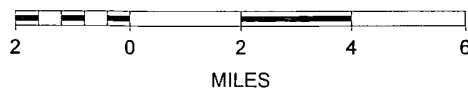
-  Cities (2000 Census)

## Transportation

-  Railways
-  Interstate Highways
-  Major Roads



SCALE 1 : 211,937



## UMU 101

### Siting Criteria Compliance Demonstration & Hydro Geologic Analysis

The subject well is not located in an unstable area. Visual inspection has been performed: location is not within 300' of any permanent residence, school, or institution; not within 500' of any private water well or spring. Depth to groundwater is estimated to between 50 and 100 feet. This estimation is based on data from Stone and others, 1983. The Ute #6 in Sec 17-32N-14W Cathodic well shows water at 110'. The topographic map confirms visual inspection of water course. FEMA Map and iWaters search do not include any information regarding the Ute Mountain Ute lands.



30-045 11395

Umu 10/  
RCVD SEP 19 '11  
OIL CONS. DIV.  
DIST. 3

DATA SHEET FOR DEEP GROUND BED CATHODIC PROTECTION WELLS  
NORTHWESTERN NEW MEXICO

Operator Meridian Oil Inc. Location: Unit M Sec. 17 Twp 32 Rng 14

Name of Well/Wells or Pipeline Serviced \_\_\_\_\_

UTE #6

Elevation 6199' Completion Date 8/31/94 Total Depth 370' Land Type I

Casing Strings, Sizes, Types & Depths 8/30 Set 99' of 8" PVC Casing.

NO GAS, WATER, or Boulders were Encountered During Casing.

If Casing Strings are cemented, show amounts & types used Cemented

WITH 18 SACKS.

If Cement or Bentonite Plugs have been placed, show depths & amounts used

NONE

Depths & thickness of water zones with description of water: Fresh, Clear,

Salty, Sulphur, Etc. HIT SOME FRESH WATER AT 110' AND MORE FRESH

WATER AT 360'. A WATER SAMPLE WAS TAKEN.

Depths gas encountered: NONE

Ground bed depth with type & amount of coke breeze used: 370' Depth.

Used 45 SACKS OF LORESCO SW (4500#)

Depths anodes placed: <sup>320'</sup>350', 340', 330', 320', 310', 300', 285', 275', 265', 250', 230', 220', 210', + 200'...

Depths vent pipes placed: SURFACE TO 370'.

Vent pipe perforations: BOTTOM 250'.

Remarks: \_\_\_\_\_

RECEIVED  
N  
JAN 29 1995

OIL CON. DIV.  
DIST. 3

If any of the above data is unavailable, please indicate so. Copies of all logs, including Drillers Log, Water Analyses & Well Bore Schematics should be submitted when available. Unplugged abandoned wells are to be included.

Land Type may be shown: F-Federal; I-Indian; S-State; P-Fee.  
If Federal or Indian, add Lease Number.

umc 10

**HUNTINGTON ENERGY, L.L.C.**  
**Ute Mountain Ute**  
***Maintenance and Operating Plan***



In accordance with Rule 19.15.17, the following information described the operations and maintenance of temporary pits for Huntington Energy.

General Plan

1. HE will operate and maintain a temporary pit to contain liquids and solids and prevent contamination of fresh water and protect public health and environment.
2. HE will transfer liquids to pits ahead of the rigs when possible. All other drilling fluids will be disposed at IEI, Permit # 01001010B for sludge, and liquids will be disposed at Basin Disposal, Inc., permit # NM-01-005 and IEI, Permit # 01001010B.
3. HE will not discharge or store any hazardous waste in any temporary pit.
4. If any pit liner's integrity is compromised, or if any penetration of the liner occurs above the liquid's surface, then HE shall notify the Aztec Division office by phone or email within 48 hours of the discovery and repair the damage or replace the liner.
5. If a leak develops below the liquid's level, HE shall remove all liquids above the damaged liner within 48 hours and repair the damage. The Aztec Division office will be contacted by phone or email within 48 hours of the discovery for leaks less than 25 barrels. HE will contact the Aztec Division office within 24 hours of discovery of leaks greater than 25 barrels. Immediate verbal notification will be reported to the division's Environmental Bureau Chief.
6. The pit shall be protected from run-off by constructing and maintaining diversion ditches around the location or around the perimeter of the pit when needed.
7. Any visible layer of oil from the surface of the temporary pit after drilling or workover operation is complete will be immediately removed. Oil absorbent booms will be utilized to contain and remove oil from the pit's surface. An oil absorbent boom will be on-site until pit closure.
8. Only fluids from drilling or workover process will be discharged into a temporary pit.
9. HE will maintain the temporary pit free of miscellaneous solid waste or debris.
10. HE will inspect the temporary pit at least once daily during drilling or workover operations in order to comply with the plan. Inspections are logged on daily drilling reports.
11. After drilling or workover, HE will inspect the temporary pit weekly as long as liquids remain in the pit. A log of the inspections will be sent per request.
12. HE shall maintain at least two feet of freeboard for a temporary pit.
13. Liquids will be removed from the temporary pit within 30 days from the date the rig is released.