

District I
1625 N French Dr, Hobbs, NM 88240
District II
1301 W Grand Avenue, Artesia, NM 88210
District III
1000 Rio Brazos Road, Aztec, NM 87410
District IV
1220 S St Francis Dr, Santa Fe, NM 87505

State of New Mexico
Energy Minerals and Natural Resources
Department
Oil Conservation Division
1220 South St. Francis Dr.
Santa Fe, NM 87505

Form C-144
July 21, 2008

For temporary pits, closed-loop systems, and below-grade tanks, submit to the appropriate NMOCD District Office
For permanent pits and exceptions submit to the Santa Fe Environmental Bureau office and provide a copy to the appropriate NMOCD District Office

6685

Pit, Closed-Loop System, Below-Grade Tank, or
Proposed Alternative Method Permit or Closure Plan Application

Type of action: ☐ Permit of a pit, closed-loop system, below-grade tank, or proposed alternative method
☒ Closure of a pit, closed-loop system, below-grade tank, or proposed alternative method
☐ Modification to an existing permit
☐ Closure plan only submitted for an existing permitted or non-permitted pit, closed-loop system, below-grade tank, or proposed alternative method

Instructions: Please submit one application (Form C-144) per individual pit, closed-loop system, below-grade tank or alternative request

Please be advised that approval of this request does not relieve the operator of liability should operations result in pollution of surface water, ground water or the environment Nor does approval relieve the operator of its responsibility to comply with any other applicable governmental authority's rules, regulations or ordinances

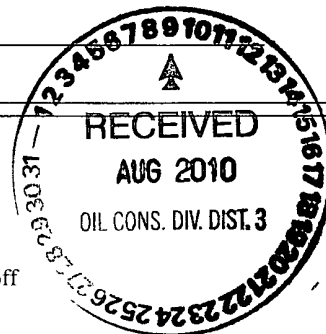
1
Operator Huntington Energy, L.L.C. OGRID # 208706
Address: 908 N W. 71st St, Oklahoma City, OK 73116
Facility or well name: Ute Mountain Ute #92
API Number 30-045-35052 OCD Permit Number _____
U/L or Qtr/Qtr I Section 16 Township 32N Range 14W County San Juan
Center of Proposed Design: Latitude 36 9847 Longitude -108 30918 NAD ☐ 1927 ☒ 1983
Surface Owner: ☐ Federal ☐ State ☐ Private ☒ Tribal Trust or Indian Allotment

2
☒ **Pit:** Subsection F or G of 19.15.17.11 NMAC
Temporary: ☒ Drilling ☐ Workover
☐ Permanent ☐ Emergency ☐ Cavitation ☐ P&A
☒ Lined ☐ Unlined Liner type Thickness 20 mil ☒ LLDPE ☐ HDPE ☐ PVC ☐ Other _____
☒ String-Reinforced
Liner Seams: ☒ Welded ☐ Factory ☐ Other _____ Volume 4000 bbl Dimensions L 90' x W 30' x D 8'

3
☐ **Closed-loop System:** Subsection H of 19.15.17.11 NMAC
Type of Operation ☐ P&A ☐ Drilling a new well ☐ Workover or Drilling (Applies to activities which require prior approval of a permit or notice of intent)
☐ Drying Pad ☐ Above Ground Steel Tanks ☐ Haul-off Bins ☐ Other _____
☐ Lined ☐ Unlined Liner type Thickness _____ mil ☐ LLDPE ☐ HDPE ☐ PVC ☐ Other _____
Liner Seams ☐ Welded ☐ Factory ☐ Other _____

4
☐ **Below-grade tank:** Subsection I of 19.15.17.11 NMAC
Volume _____ bbl Type of fluid _____
Tank Construction material _____
☐ Secondary containment with leak detection ☐ Visible sidewalls, liner, 6-inch lift and automatic overflow shut-off
☐ Visible sidewalls and liner ☐ Visible sidewalls only ☐ Other _____
Liner type. Thickness _____ mil ☐ HDPE ☐ PVC ☐ Other _____

5
☐ **Alternative Method:**
Submittal of an exception request is required. Exceptions must be submitted to the Santa Fe Environmental Bureau office for consideration of approval



6

Fencing: Subsection D of 19.15.17.11 NMAC (*Applies to permanent pits, temporary pits, and below-grade tanks*)

- ☐ Chain link, six feet in height, two strands of barbed wire at top (*Required if located within 1000 feet of a permanent residence, school, hospital, institution or church*)
- ☐ Four foot height, four strands of barbed wire evenly spaced between one and four feet
- ☐ Alternate. Please specify _____

7.

Netting: Subsection E of 19.15.17.11 NMAC (*Applies to permanent pits and permanent open top tanks*)

- ☐ Screen ☐ Netting ☐ Other _____
- ☐ Monthly inspections (If netting or screening is not physically feasible)

8

Signs: Subsection C of 19.15.17.11 NMAC

- ☐ 12"x 24", 2" lettering, providing Operator's name, site location, and emergency telephone numbers
- ☒ Signed in compliance with 19.15.3.103 NMAC

9

Administrative Approvals and Exceptions:

Justifications and/or demonstrations of equivalency are required. Please refer to 19.15.17 NMAC for guidance.

Please check a box if one or more of the following is requested, if not leave blank:

- ☐ Administrative approval(s): Requests must be submitted to the appropriate division district or the Santa Fe Environmental Bureau office for consideration of approval
- ☐ Exception(s): Requests must be submitted to the Santa Fe Environmental Bureau office for consideration of approval

10.

Siting Criteria (regarding permitting): 19.15.17.10 NMAC

Instructions: The applicant must demonstrate compliance for each siting criteria below in the application. Recommendations of acceptable source material are provided below. Requests regarding changes to certain siting criteria may require administrative approval from the appropriate district office or may be considered an exception which must be submitted to the Santa Fe Environmental Bureau office for consideration of approval. Applicant must attach justification for request. Please refer to 19.15.17.10 NMAC for guidance. Siting criteria does not apply to drying pads or above-grade tanks associated with a closed-loop system.

Ground water is less than 50 feet below the bottom of the temporary pit, permanent pit, or below-grade tank - NM Office of the State Engineer - iWATERS database search, USGS, Data obtained from nearby wells	<input type="checkbox"/> Yes <input type="checkbox"/> No
Within 300 feet of a continuously flowing watercourse, or 200 feet of any other significant watercourse or lakebed, sinkhole, or playa lake (measured from the ordinary high-water mark) - Topographic map; Visual inspection (certification) of the proposed site	<input type="checkbox"/> Yes <input type="checkbox"/> No
Within 300 feet from a permanent residence, school, hospital, institution, or church in existence at the time of initial application (<i>Applies to temporary, emergency, or cavitation pits and below-grade tanks</i>) - Visual inspection (certification) of the proposed site, Aerial photo, Satellite image	<input type="checkbox"/> Yes <input type="checkbox"/> No <input type="checkbox"/> NA
Within 1000 feet from a permanent residence, school, hospital, institution, or church in existence at the time of initial application. (<i>Applies to permanent pits</i>) - Visual inspection (certification) of the proposed site, Aerial photo, Satellite image	<input type="checkbox"/> Yes <input type="checkbox"/> No <input type="checkbox"/> NA
Within 500 horizontal feet of a private, domestic fresh water well or spring that less than five households use for domestic or stock watering purposes, or within 1000 horizontal feet of any other fresh water well or spring, in existence at the time of initial application. - NM Office of the State Engineer - iWATERS database search; Visual inspection (certification) of the proposed site	<input type="checkbox"/> Yes <input type="checkbox"/> No
Within incorporated municipal boundaries or within a defined municipal fresh water well field covered under a municipal ordinance adopted pursuant to NMSA 1978, Section 3-27-3, as amended. - Written confirmation or verification from the municipality, Written approval obtained from the municipality	<input type="checkbox"/> Yes <input type="checkbox"/> No
Within 500 feet of a wetland. - US Fish and Wildlife Wetland Identification map, Topographic map, Visual inspection (certification) of the proposed site	<input type="checkbox"/> Yes <input type="checkbox"/> No
Within the area overlying a subsurface mine. - Written confirmation or verification or map from the NM EMNRD-Mining and Mineral Division	<input type="checkbox"/> Yes <input type="checkbox"/> No
Within an unstable area. - Engineering measures incorporated into the design; NM Bureau of Geology & Mineral Resources, USGS; NM Geological Society; Topographic map	<input type="checkbox"/> Yes <input type="checkbox"/> No
Within a 100-year floodplain - FEMA map	<input type="checkbox"/> Yes <input type="checkbox"/> No

11.

Temporary Pits, Emergency Pits, and Below-grade Tanks Permit Application Attachment Checklist: Subsection B of 19.15.17.9 NMAC
Instructions: Each of the following items must be attached to the application. Please indicate, by a check mark in the box, that the documents are attached.

- ☐ Hydrogeologic Report (Below-grade Tanks) - based upon the requirements of Paragraph (4) of Subsection B of 19.15.17.9 NMAC
☐ Hydrogeologic Data (Temporary and Emergency Pits) - based upon the requirements of Paragraph (2) of Subsection B of 19.15.17.9 NMAC
☐ Siting Criteria Compliance Demonstrations - based upon the appropriate requirements of 19.15.17.10 NMAC
☐ Design Plan - based upon the appropriate requirements of 19.15.17.11 NMAC
☐ Operating and Maintenance Plan - based upon the appropriate requirements of 19.15.17.12 NMAC
☐ Closure Plan (Please complete Boxes 14 through 18, if applicable) - based upon the appropriate requirements of Subsection C of 19.15.17.9 NMAC and 19.15.17.13 NMAC

☐ Previously Approved Design (attach copy of design) API Number: _____ or Permit Number: _____

12.

Closed-loop Systems Permit Application Attachment Checklist: Subsection B of 19.15.17.9 NMAC

Instructions: Each of the following items must be attached to the application. Please indicate, by a check mark in the box, that the documents are attached.

- ☐ Geologic and Hydrogeologic Data (only for on-site closure) - based upon the requirements of Paragraph (3) of Subsection B of 19.15.17.9
☐ Siting Criteria Compliance Demonstrations (only for on-site closure) - based upon the appropriate requirements of 19.15.17.10 NMAC
☐ Design Plan - based upon the appropriate requirements of 19.15.17.11 NMAC
☐ Operating and Maintenance Plan - based upon the appropriate requirements of 19.15.17.12 NMAC
☐ Closure Plan (Please complete Boxes 14 through 18, if applicable) - based upon the appropriate requirements of Subsection C of 19.15.17.9 NMAC and 19.15.17.13 NMAC

☐ Previously Approved Design (attach copy of design) API Number: _____

☐ Previously Approved Operating and Maintenance Plan API Number _____ (Applies only to closed-loop system that use above ground steel tanks or haul-off bins and propose to implement waste removal for closure)

13.

Permanent Pits Permit Application Checklist: Subsection B of 19.15.17.9 NMAC

Instructions: Each of the following items must be attached to the application. Please indicate, by a check mark in the box, that the documents are attached.

- ☐ Hydrogeologic Report - based upon the requirements of Paragraph (1) of Subsection B of 19.15.17.9 NMAC
☐ Siting Criteria Compliance Demonstrations - based upon the appropriate requirements of 19.15.17.10 NMAC
☐ Climatological Factors Assessment
☐ Certified Engineering Design Plans - based upon the appropriate requirements of 19.15.17.11 NMAC
☐ Dike Protection and Structural Integrity Design - based upon the appropriate requirements of 19.15.17.11 NMAC
☐ Leak Detection Design - based upon the appropriate requirements of 19.15.17.11 NMAC
☐ Liner Specifications and Compatibility Assessment - based upon the appropriate requirements of 19.15.17.11 NMAC
☐ Quality Control/Quality Assurance Construction and Installation Plan
☐ Operating and Maintenance Plan - based upon the appropriate requirements of 19.15.17.12 NMAC
☐ Freeboard and Overtopping Prevention Plan - based upon the appropriate requirements of 19.15.17.11 NMAC
☐ Nuisance or Hazardous Odors, including H₂S, Prevention Plan
☐ Emergency Response Plan
☐ Oil Field Waste Stream Characterization
☐ Monitoring and Inspection Plan
☐ Erosion Control Plan
☐ Closure Plan - based upon the appropriate requirements of Subsection C of 19.15.17.9 NMAC and 19.15.17.13 NMAC

14.

Proposed Closure: 19.15.17.13 NMAC

Instructions: Please complete the applicable boxes, Boxes 14 through 18, in regards to the proposed closure plan.

Type. ☐ Drilling ☐ Workover ☐ Emergency ☐ Cavitation ☐ P&A ☐ Permanent Pit ☐ Below-grade Tank ☐ Closed-loop System
☐ Alternative

Proposed Closure Method: ☐ Waste Excavation and Removal
☐ Waste Removal (Closed-loop systems only)
☐ On-site Closure Method (Only for temporary pits and closed-loop systems)
☐ In-place Burial ☐ On-site Trench Burial
☐ Alternative Closure Method (Exceptions must be submitted to the Santa Fe Environmental Bureau for consideration)

15.

Waste Excavation and Removal Closure Plan Checklist: (19.15.17.13 NMAC) **Instructions:** Each of the following items must be attached to the closure plan. Please indicate, by a check mark in the box, that the documents are attached.

- ☐ Protocols and Procedures - based upon the appropriate requirements of 19.15.17.13 NMAC
☐ Confirmation Sampling Plan (if applicable) - based upon the appropriate requirements of Subsection F of 19.15.17.13 NMAC
☐ Disposal Facility Name and Permit Number (for liquids, drilling fluids and drill cuttings)
☐ Soil Backfill and Cover Design Specifications - based upon the appropriate requirements of Subsection H of 19.15.17.13 NMAC
☐ Re-vegetation Plan - based upon the appropriate requirements of Subsection I of 19.15.17.13 NMAC
☐ Site Reclamation Plan - based upon the appropriate requirements of Subsection G of 19.15.17.13 NMAC

16

Waste Removal Closure For Closed-loop Systems That Utilize Above Ground Steel Tanks or Haul-off Bins Only: (19 15 17 13 D NMAC)**Instructions:** Please identify the facility or facilities for the disposal of liquids, drilling fluids and drill cuttings. Use attachment if more than two facilities are required.

Disposal Facility Name: _____ Disposal Facility Permit Number _____

Disposal Facility Name: _____ Disposal Facility Permit Number: _____

Will any of the proposed closed-loop system operations and associated activities occur on or in areas that *will not* be used for future service and operations?☐ Yes (If yes, please provide the information below) ☐ No*Required for impacted areas which will not be used for future service and operations*☐ Soil Backfill and Cover Design Specifications - based upon the appropriate requirements of Subsection H of 19 15.17 13 NMAC☐ Re-vegetation Plan - based upon the appropriate requirements of Subsection I of 19 15.17.13 NMAC☐ Site Reclamation Plan - based upon the appropriate requirements of Subsection G of 19.15 17 13 NMAC

17

Siting Criteria (regarding on-site closure methods only): 19 15.17 10 NMAC**Instructions:** Each siting criteria requires a demonstration of compliance in the closure plan. Recommendations of acceptable source material are provided below. Requests regarding changes to certain siting criteria may require administrative approval from the appropriate district office or may be considered an exception which must be submitted to the Santa Fe Environmental Bureau office for consideration of approval. Justifications and/or demonstrations of equivalency are required. Please refer to 19.15.17.10 NMAC for guidance.

Ground water is less than 50 feet below the bottom of the buried waste - NM Office of the State Engineer - iWATERS database search, USGS, Data obtained from nearby wells	<input type="checkbox"/> Yes <input type="checkbox"/> No <input type="checkbox"/> NA
Ground water is between 50 and 100 feet below the bottom of the buried waste - NM Office of the State Engineer - iWATERS database search; USGS, Data obtained from nearby wells	<input type="checkbox"/> Yes <input type="checkbox"/> No <input type="checkbox"/> NA
Ground water is more than 100 feet below the bottom of the buried waste. - NM Office of the State Engineer - iWATERS database search, USGS, Data obtained from nearby wells	<input type="checkbox"/> Yes <input type="checkbox"/> No <input type="checkbox"/> NA
Within 300 feet of a continuously flowing watercourse, or 200 feet of any other significant watercourse or lakebed, sinkhole, or playa lake (measured from the ordinary high-water mark) - Topographic map; Visual inspection (certification) of the proposed site	<input type="checkbox"/> Yes <input type="checkbox"/> No
Within 300 feet from a permanent residence, school, hospital, institution, or church in existence at the time of initial application - Visual inspection (certification) of the proposed site; Aerial photo, Satellite image	<input type="checkbox"/> Yes <input type="checkbox"/> No
Within 500 horizontal feet of a private, domestic fresh water well or spring that less than five households use for domestic or stock watering purposes, or within 1000 horizontal feet of any other fresh water well or spring, in existence at the time of initial application - NM Office of the State Engineer - iWATERS database, Visual inspection (certification) of the proposed site	<input type="checkbox"/> Yes <input type="checkbox"/> No
Within incorporated municipal boundaries or within a defined municipal fresh water well field covered under a municipal ordinance adopted pursuant to NMSA 1978, Section 3-27-3, as amended. - Written confirmation or verification from the municipality, Written approval obtained from the municipality	<input type="checkbox"/> Yes <input type="checkbox"/> No
Within 500 feet of a wetland - US Fish and Wildlife Wetland Identification map; Topographic map; Visual inspection (certification) of the proposed site	<input type="checkbox"/> Yes <input type="checkbox"/> No
Within the area overlying a subsurface mine - Written confirmation or verification or map from the NM EMNRD-Mining and Mineral Division	<input type="checkbox"/> Yes <input type="checkbox"/> No
Within an unstable area. - Engineering measures incorporated into the design, NM Bureau of Geology & Mineral Resources, USGS, NM Geological Society, Topographic map	<input type="checkbox"/> Yes <input type="checkbox"/> No
Within a 100-year floodplain - FEMA map	<input type="checkbox"/> Yes <input type="checkbox"/> No

18.

On-Site Closure Plan Checklist: (19.15.17 13 NMAC) **Instructions:** Each of the following items must be attached to the closure plan. Please indicate, by a check mark in the box, that the documents are attached.

- ☐ Siting Criteria Compliance Demonstrations - based upon the appropriate requirements of 19 15 17 10 NMAC
- ☐ Proof of Surface Owner Notice - based upon the appropriate requirements of Subsection F of 19 15 17 13 NMAC
- ☐ Construction/Design Plan of Burial Trench (if applicable) based upon the appropriate requirements of 19.15 17 11 NMAC
- ☐ Construction/Design Plan of Temporary Pit (for in-place burial of a drying pad) - based upon the appropriate requirements of 19 15 17.11 NMAC
- ☐ Protocols and Procedures - based upon the appropriate requirements of 19 15 17 13 NMAC
- ☐ Confirmation Sampling Plan (if applicable) - based upon the appropriate requirements of Subsection F of 19 15 17 13 NMAC
- ☐ Waste Material Sampling Plan - based upon the appropriate requirements of Subsection F of 19.15.17.13 NMAC
- ☐ Disposal Facility Name and Permit Number (for liquids, drilling fluids and drill cuttings or in case on-site closure standards cannot be achieved)
- ☐ Soil Cover Design - based upon the appropriate requirements of Subsection H of 19.15.17.13 NMAC
- ☐ Re-vegetation Plan - based upon the appropriate requirements of Subsection I of 19.15.17 13 NMAC
- ☐ Site Reclamation Plan - based upon the appropriate requirements of Subsection G of 19.15.17.13 NMAC

19

Operator Application Certification:

I hereby certify that the information submitted with this application is true, accurate and complete to the best of my knowledge and belief

Name (Print): _____ Title: _____

Signature _____ Date 4/7/2010

e-mail address: _____ Telephone _____

20

OCD Approval: ☐ Permit Application (including closure plan) ☒ Closure Plan (only) ☐ OCD Conditions (see attachment)

OCD Representative Signature: Jonathan D. Kelly Approval Date: 11/09/2011

Title: Compliance Officer OCD Permit Number: _____

21

Closure Report (required within 60 days of closure completion): Subsection K of 19 15 17 13 NMAC

Instructions: Operators are required to obtain an approved closure plan prior to implementing any closure activities and submitting the closure report. The closure report is required to be submitted to the division within 60 days of the completion of the closure activities. Please do not complete this section of the form until an approved closure plan has been obtained and the closure activities have been completed.

☒ Closure Completion Date: 7/12/10

22.

Closure Method:

☐ Waste Excavation and Removal ☒ On-Site Closure Method ☐ Alternative Closure Method ☐ Waste Removal (Closed-loop systems only)
☐ If different from approved plan, please explain.

23.

Closure Report Regarding Waste Removal Closure For Closed-loop Systems That Utilize Above Ground Steel Tanks or Haul-off Bins Only:

Instructions: Please indentify the facility or facilities for where the liquids, drilling fluids and drill cuttings were disposed. Use attachment if more than two facilities were utilized.

Disposal Facility Name: _____ Disposal Facility Permit Number: _____

Disposal Facility Name: _____ Disposal Facility Permit Number: _____

Were the closed-loop system operations and associated activities performed on or in areas that will not be used for future service and operations?

☐ Yes (If yes, please demonstrate compliance to the items below) ☐ No

Required for impacted areas which will not be used for future service and operations

- ☐ Site Reclamation (Photo Documentation)
☐ Soil Backfilling and Cover Installation
☐ Re-vegetation Application Rates and Seeding Technique

24

Closure Report Attachment Checklist: Instructions: Each of the following items must be attached to the closure report. Please indicate, by a check mark in the box, that the documents are attached.

- ☒ Proof of Closure Notice (surface owner and division)
☐ Proof of Deed Notice (required for on-site closure)
☒ Plot Plan (for on-site closures and temporary pits)
☐ Confirmation Sampling Analytical Results (if applicable)
☒ Waste Material Sampling Analytical Results (required for on-site closure)
☒ Disposal Facility Name and Permit Number
☒ Soil Backfilling and Cover Installation
☒ Re-vegetation Application Rates and Seeding Technique
☒ Site Reclamation (Photo Documentation)

On-site Closure Location Latitude 36.98486 N Longitude 108.30899 W NAD ☐ 1927 ☒ 1983

25.

Operator Closure Certification:

I hereby certify that the information and attachments submitted with this closure report is true, accurate and complete to the best of my knowledge and belief I also certify that the closure complies with all applicable closure requirements and conditions specified in the approved closure plan

Name (Print): Catherine Smith Title Regulatory

Signature: Catherine Smith Date: 8/05/2010

e-mail address: csmith@huntingtonenergy.com Telephone: 405-840-9876

Cathy Smith

From: Cathy Smith

Sent: Friday, July 09, 2010 9 04 AM

To: 'Powell, Brandon, EMNRD'; 'Ute Mountain Utes (ghammond@utemountain.org)'; 'Troy_Salyers@blm.gov'

Cc: Alan McNally, 'rclackey1@netzero.net'

Subject: Ute Mountain Ute #92 Notice of Pit Closure

Notice of Pit Closure per NMOCD Rules for the following well:

Ute Mountain Ute # 92

API #: 30-045-35052

Ls # I22IND2772

SE Lot I, 1460' FSL & 1080' FEL

Sec 16-T32N-R14W

Thank you!

Cathy Smith

(405) 840-9876 ext. 129

(405) 840-2011 Fax



7/9/2010



**EPA METHOD 8015 Modified
Nonhalogenated Volatile Organics
Total Petroleum Hydrocarbons**


Client:	Huntington Energy	Project #:	06111-0002
Sample ID:	5-pt	Date Reported:	06-09-10
Laboratory Number:	54494	Date Sampled:	05-28-10
Chain of Custody No:	9494	Date Received:	05-28-10
Sample Matrix:	Soil	Date Extracted:	06-02-10
Preservative:	Cool	Date Analyzed:	06-03-10
Condition:	Intact	Analysis Requested:	8015 TPH

Parameter	Concentration (mg/Kg)	Det. Limit (mg/Kg)
Gasoline Range (C5 - C10)	0.2	0.2
Diesel Range (C10 - C28)	8.8	0.1
Total Petroleum Hydrocarbons	9.0	0.2

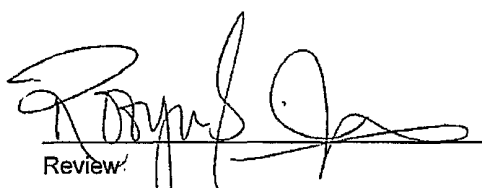
ND - Parameter not detected at the stated detection limit.

References: Method 8015B, Nonhalogenated Volatile Organics, Test Methods for Evaluating Solid Waste, SW-846, USEPA, December 1996.

Comments: **Ute Mountain Ute 92**



Analyst



Review



EPA Method 8015 Modified
Nonhalogenated Volatile Organics
Total Petroleum Hydrocarbons

Quality Assurance Report

Client:	QA/QC	Project #:	N/A
Sample ID:	06-03-10 QA/QC	Date Reported:	06-09-10
Laboratory Number:	54495	Date Sampled:	N/A
Sample Matrix:	Methylene Chloride	Date Received:	N/A
Preservative:	N/A	Date Analyzed:	06-03-10
Condition:	N/A	Analysis Requested:	TPH

	Cal Date	Cal Rf	C-Cal Rf	% Difference	Accept Range
Gasoline Range C5 - C10	05-07-07	9.9960E+002	1.0000E+003	0.04%	0 - 15%
Diesel Range C10 - C28	05-07-07	9.9960E+002	1.0000E+003	0.04%	0 - 15%

Blank Conc. (mg/L, mg/Kg)	Concentration	Detection Limit
Gasoline Range C5 - C10	ND	0.2
Diesel Range C10 - C28	ND	0.1
Total Petroleum Hydrocarbons	ND	0.2


Duplicate Conc. (mg/Kg)	Sample	Duplicate	% Difference	Accept Range
Gasoline Range C5 - C10	30.4	31.0	2.0%	0 - 30%
Diesel Range C10 - C28	76.7	67.4	12.1%	0 - 30%

Spike Conc. (mg/Kg)	Sample	Spike Added	Spike Result	% Recovery	Accept Range
Gasoline Range C5 - C10	30.4	250	277	98.7%	75 - 125%
Diesel Range C10 - C28	76.7	250	406	124%	75 - 125%

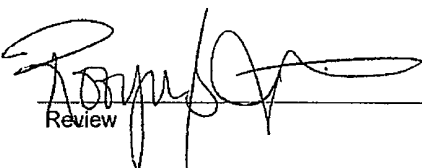
ND - Parameter not detected at the stated detection limit.

References: Method 8015B, Nonhalogenated Volatile Organics, Test Methods for Evaluating Solid Waste, SW-846, USEPA, December 1996.

Comments: QA/QC for Samples 54494-54497 and 54507.



Analyst



Review



EPA METHOD 8021
AROMATIC VOLATILE ORGANICS

Client:	Huntington Energy	Project #:	06111-0002
Sample ID:	5-Pt	Date Reported:	06-09-10
Laboratory Number:	54494	Date Sampled:	05-28-10
Chain of Custody:	9494	Date Received:	05-28-10
Sample Matrix:	Soil	Date Analyzed:	06-02-10
Preservative:	Cool	Date Extracted:	06-02-10
Condition:	Intact	Analysis Requested:	BTEX

Parameter	Concentration (ug/Kg)	Det. Limit (ug/Kg)
Benzene	ND	0.9
Toluene	ND	1.0
Ethylbenzene	7.9	1.0
p,m-Xylene	27.6	1.2
o-Xylene	13.1	0.9
Total BTEX	48.6	


ND - Parameter not detected at the stated detection limit.

Surrogate Recoveries:	Parameter	Percent Recovery
	Fluorobenzene	114 %
	1,4-difluorobenzene	113 %
	Bromochlorobenzene	118 %

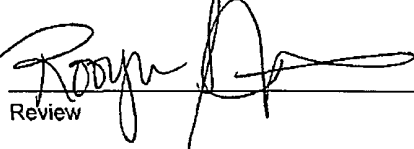
References: Method 5030B, Purge-and-Trap, Test Methods for Evaluating Solid Waste, SW-846, USEPA, December 1996.

Method 8021B, Aromatic Volatile Organics, Test Methods for Evaluating Solid Waste, SW-846, USEPA, December 1996.

Comments: Ute Mountain Ute 92



Analyst



Review

Client:	N/A	Project #:	N/A
Sample ID:	0602BBLK QA/QC	Date Reported:	06-08-10
Laboratory Number:	54494	Date Sampled:	N/A
Sample Matrix:	Soil	Date Received:	N/A
Preservative:	N/A	Date Analyzed:	06-02-10
Condition:	N/A	Analysis:	BTEX

Calibration and Detection Limits (ug/L)	ICH/IRF	C-CA/IRF	%Diff	Blank Conc	Detect Limit
		Accept Range 0 - 15%			
Benzene	4.2278E+006	4.2363E+006	0.2%	ND	0.1
Toluene	3.9148E+006	3.9226E+006	0.2%	ND	0.1
Ethylbenzene	2.6205E+006	2.6257E+006	0.2%	ND	0.1
p,m-Xylene	6.9012E+006	6.9150E+006	0.2%	ND	0.1
o-Xylene	2.6909E+006	2.6963E+006	0.2%	ND	0.1


Duplicate Conc (ug/Kg)	Sample	Duplicate	%Diff	Accept Range	Detect Limit
Benzene	ND	ND	0.0%	0 - 30%	0.9
Toluene	ND	ND	0.0%	0 - 30%	1.0
Ethylbenzene	7.9	7.0	11.4%	0 - 30%	1.0
p,m-Xylene	27.6	22.6	18.1%	0 - 30%	1.2
o-Xylene	13.1	10.4	20.6%	0 - 30%	0.9

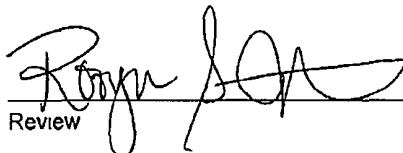
Spiked Conc (ug/Kg)	Sample	Amount Spiked	Spiked Sample	% Recovery	Accept Range
Benzene	ND	50.0	49.9	100%	39 - 150
Toluene	ND	50.0	54.0	108%	46 - 148
Ethylbenzene	7.9	50.0	51.7	89.2%	32 - 160
p,m-Xylene	27.6	100	103	80.6%	46 - 148
o-Xylene	13.1	50.0	51.1	81.0%	46 - 148

ND - Parameter not detected at the stated detection limit

References: Method 5030B, Purge-and-Trap, Test Methods for Evaluating Solid Waste, SW-846, USEPA, December 1996
 Method 8021B, Aromatic and Halogenated Volatiles by Gas Chromatography Using Photoionization and/or Electrolytic Conductivity Detectors, SW-846, USEPA December 1996

Comments: QA/QC for Samples 54494-54497.


 Analyst


 Review

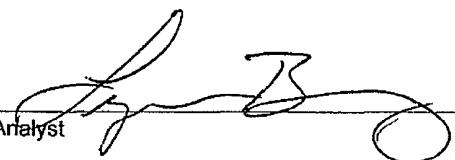
Client:	Huntington Energy	Project #:	06111-0002
Sample ID:	5-Pt	Date Reported:	06-09-10
Laboratory Number:	54494	Date Sampled:	05-28-10
Chain of Custody No:	9494	Date Received:	05-28-10
Sample Matrix:	Soil	Date Extracted:	06-02-10
Preservative:	Cool	Date Analyzed:	06-02-10
Condition:	Intact	Analysis Needed:	TPH-418.1

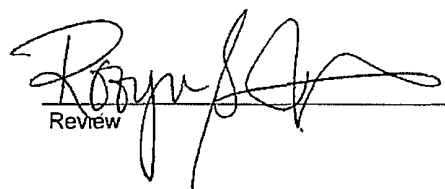
Parameter	Concentration (mg/kg)	Det. Limit (mg/kg)
Total Petroleum Hydrocarbons	392	12.2

ND = Parameter not detected at the stated detection limit.

References: Method 418.1, Petroleum Hydrocarbons, Total Recoverable, Chemical Analysis of Water and Waste, USEPA Storet No. 4551, 1978.

Comments: Ute Mountain Ute #92


Analyst


Review



envirotech
Analytical Laboratory

**EPA METHOD 418.1
TOTAL PETROLEUM
HYDROCARBONS
QUALITY ASSURANCE REPORT**

Client:	QA/QC	Project #:	N/A
Sample ID:	QA/QC	Date Reported:	06-09-10
Laboratory Number:	06-02-TPH.QA/QC 54478	Date Sampled:	N/A
Sample Matrix:	Freon-113	Date Analyzed:	06-02-10
Preservative:	N/A	Date Extracted:	06-02-10
Condition:	N/A	Analysis Needed:	TPH

Calibration	I-Cal Date	C-Cal Date	I-Cal RF	C-Cal RF	% Difference	Accept Range
	04/22/2010	06-02-10	1,690	1,770	4.7%	+/- 10%

Blank Conc. (mg/Kg)	Concentration	Detection Limit
TPH	ND	12.2

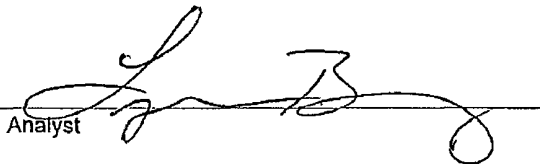
Duplicate Conc. (mg/Kg)	Sample	Duplicate	% Difference	Accept Range
TPH	14.9	13.5	9.4%	+/- 30%

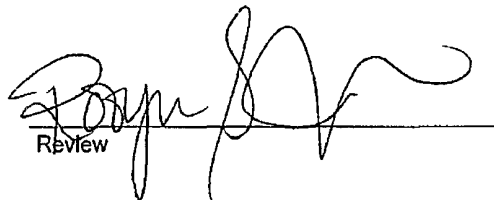
Spike Conc. (mg/Kg)	Sample	Spike Added	Spike Result	% Recovery	Accept Range
TPH	14.9	2,000	1,930	95.8%	80 - 120%

ND = Parameter not detected at the stated detection limit.

References: Method 418.1, Petroleum Hydrocarbons, Total Recoverable, Chemical Analysis of Water and Waste, USEPA Storet No. 4551, 1978.

Comments: QA/QC for Samples 54478, 54486-54489, 54494-54497, 54507.

Analyst 

Review 

Client:	Huntington Energy	Project #:	06111-0002
Sample ID:	5-Pt	Date Reported:	06-09-10
Lab ID#:	54494	Date Sampled:	05-28-10
Sample Matrix:	Soil	Date Received:	05-28-10
Preservative:	Cool	Date Analyzed:	06-03-10
Condition:	Intact	Chain of Custody:	9494

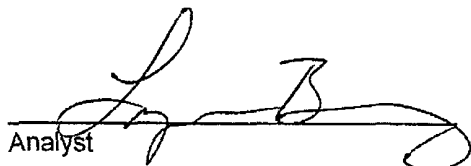
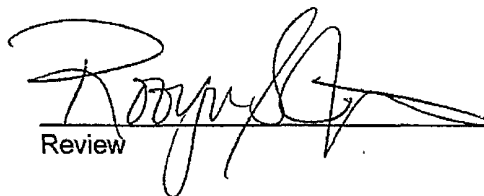
Parameter	Concentration (mg/Kg)
-----------	-----------------------

Total Chloride

485

Reference: U.S.E.P.A., 4500B, "Methods for Chemical Analysis of Water and Wastes", 1983.
Standard Methods For The Examination of Water And Waste Water", 18th ed., 1992.

Comments: Ute Mountain Ute 92


Analyst
Review

CHAIN OF CUSTODY RECORD

09494

Client: HUNTINGTON ENERGY			Project Name / Location: OTE MOUNTAIN UTE 92			ANALYSIS / PARAMETERS																
Client Address:			Sampler Name: G. CLEAVER																			
Client Phone No.:			Client No.: 0611-0002																			
Sample No./ Identification	Sample Date	Sample Time	Lab No.	Sample Matrix	No./Volume of Containers	Preservative		TPH (Method 8015)	BTEX (Method 8021)	VOC (Method 8260)	RCRA 8 Metals	Cation / Anion	ICL	TCLP with H/P	PAH	TPH (418.1)	CHLORIDE			Sample Cool	Sample Intact	
SPT	5-22-10	1000	54494	Soil Solid Sludge Aqueous	1-402			X	X								X	X			✓	✓
				Soil Solid	Sludge Aqueous																	
				Soil Solid	Sludge Aqueous																	
				Soil Solid	Sludge Aqueous																	
				Soil Solid	Sludge Aqueous																	
				Soil Solid	Sludge Aqueous																	
				Soil Solid	Sludge Aqueous																	
				Soil Solid	Sludge Aqueous																	
				Soil Solid	Sludge Aqueous																	
				Soil Solid	Sludge Aqueous																	
				Soil Solid	Sludge Aqueous																	
Relinquished by: (Signature) Gary Cleaver				Date 5-22-10	Time 1340	Received by: (Signature) [Signature]				Date 5-28-10				Time 13:40								
Relinquished by: (Signature) [Signature]						Received by: (Signature) [Signature]																
Relinquished by: (Signature)						Received by: (Signature)																



5796 US Highway 64 • Farmington, NM 87401 • 505-632-0615 • lab@envirotech-inc.com

**Huntington Energy, L.L.C.
Ute Mountain Ute #92
Sec 16, T32N-R14W
San Juan Co., NM**

Soil Backfilling and Cover Installation

Upon completion of solidification and testing standards being passed (see attached test results) a minimum of 4 ft of cover is achieved including a suitable layer of material to establish vegetation at the site. All re-contouring of location will match fit shape, line, and texture of the surrounding area.

Re-Vegetation and Seeding Technique

Seeding shall commence on or about April 1st, or the first available growing season barring weather. BLM stipulated seed mixes will be used on federal lands. Vegetative cover will equal 70% of the native perennial vegetative cover consisting of at least three native plant species, including at least one grass, and maintain that cover through two successive growing seasons. Repeated seeding or planting will be continued until successful growth occurs.

Temporary Pit Marker

A steel marker will be placed at the center of the on-site burial. The steel marker will not be less than 4" in diameter and be cemented in a 3' hole. Marker shall extend 4' above ground level. Engraved into the marker will be the operator's name, and legal location. This marker shall not be removed. Note: during active operations, a ground level marker will be employed due to safety concerns; upon abandonment, the 4" x 4' marker will be employed.

Disposal Facility

Facility Name: IEI
Permit #: NM-010010B

uma #92



Submit To Appropriate District Office Two Copies District I 1625 N French Dr , Hobbs, NM 88240 District II 1301 W Grand Avenue, Artesia, NM 88210 District III 1000 Rio Brazos Rd , Aztec, NM 87410 District IV 1220 S St Francis Dr , Santa Fe, NM 87505	State of New Mexico Energy, Minerals and Natural Resources Oil Conservation Division 1220 South St. Francis Dr. Santa Fe, NM 87505	Form C-105 July 17, 2008								
		1. WELL API NO. 30-045-35052								
		2 Type of Lease <input type="checkbox"/> STATE <input type="checkbox"/> FEE <input checked="" type="checkbox"/> FED/INDIAN								
		3 State Oil & Gas Lease No I22IND2772								
WELL COMPLETION OR RECOMPLETION REPORT AND LOG										
4 Reason for filing. <input type="checkbox"/> COMPLETION REPORT (Fill in boxes #1 through #31 for State and Fee wells only) <input checked="" type="checkbox"/> C-144 CLOSURE ATTACHMENT (Fill in boxes #1 through #9, #15 Date Rig Released and #32 and/or #33, attach this and the plat to the C-144 closure report in accordance with 19 15 17 13 K NMAC)		5 Lease Name or Unit Agreement Name Ute Mountain Ute 6 Well Number 92								
7 Type of Completion <input checked="" type="checkbox"/> NEW WELL <input type="checkbox"/> WORKOVER <input type="checkbox"/> DEEPENING <input type="checkbox"/> PLUGBACK <input type="checkbox"/> DIFFERENT RESERVOIR <input type="checkbox"/> OTHER										
8 Name of Operator Huntington Energy, L L C		9 OGRID 208706								
10 Address of Operator 908 N W 71 st St , Oklahoma City, OK 73116		11 Pool name or Wildcat								
12. Location	Unit Ltr	Section	Township	Range	Lot	Feet from the	N/S Line	Feet from the	E/W Line	County
Surface:										
BH:										
13 Date Spudded	14 Date T.D Reached	15 Date Rig Released 5/16/10		16 Date Completed (Ready to Produce)			17 Elevations (DF and RKB, RT, GR, etc)			
18 Total Measured Depth of Well		19 Plug Back Measured Depth		20 Was Directional Survey Made?			21 Type Electric and Other Logs Run			
22 Producing Interval(s), of this completion - Top, Bottom, Name										
23 CASING RECORD (Report all strings set in well)										
CASING SIZE		WEIGHT LB /FT		DEPTH SET		HOLE SIZE		CEMENTING RECORD		AMOUNT PULLED
24. LINER RECORD						25 TUBING RECORD				
SIZE	TOP	BOTTOM	SACKS CEMENT	SCREEN		SIZE	DEPTH SET	PACKER SET		
26 Perforation record (interval, size, and number)						27 ACID, SHOT, FRACTURE, CEMENT, SQUEEZE, ETC				
						DEPTH INTERVAL		AMOUNT AND KIND MATERIAL USED		
28 PRODUCTION										
Date First Production		Production Method (Flowing, gas lift, pumping - Size and type pump)				Well Status (Prod or Shut-in)				
Date of Test	Hours Tested	Choke Size	Prod'n For Test Period	Oil - Bbl	Gas - MCF	Water - Bbl	Gas - Oil Ratio			
Flow Tubing Press	Casing Pressure	Calculated 24-Hour Rate	Oil - Bbl.	Gas - MCF	Water - Bbl	Oil Gravity - API - (Corr)				
29 Disposition of Gas (Sold, used for fuel, vented, etc)							30 Test Witnessed By			
31 List Attachments										
32 If a temporary pit was used at the well, attach a plat with the location of the temporary pit										
33. If an on-site burial was used at the well, report the exact location of the on-site burial										
				Latitude		Longitude		NAD 1927 1983		
I hereby certify that the information shown on both sides of this form is true and complete to the best of my knowledge and belief										
Signature <i>Catherine Smith</i>			Printed Name Catherine Smith		Title Regulatory		Date 8/4/2010			
E-mail Address csmith@huntingtonenergy.com										

**Ute Mountain Ute #92
Huntington Energy, L.L.C.
San Juan Basin-Ute Mountain Ute
Pit Closure Report**



In accordance with Rule 19 15 17.12 NMAC the following information describes the closure requirements of temporary pits on Huntington Energy, L L C (HE) locations. This is HE's standard procedure for all temporary pits A separate plan will be submitted for any temporary pit which does not conform to this plan

All closure activities will include proper documentation and be available for review upon request and will be submitted to OCD within 60 days of closure of pit. Closure report will be filed on C-144 and include the following:

- Details on Capping and Covering, where applicable
- Plot Plan (Pit Diagram) – **C102 w/pit on diagram - submitted**
- Inspection Reports - **Attached**
- Sampling Results – **Envirotech – Submitted with C-144 Pit Closure**
- C-105 – **Submitted with C-144 Pit Closure**
- Copy of Deed Notice will be filed with County Clerk **N/A**

General Plan

- 1 All free standing liquids will be removed at the start of the pit closure process from the pit and disposed of in a division-approved facility or recycle, reuse or reclaim the liquids in a manner that the appropriate division district office approves. The facilities to be used for liquids will be IEI – NM-010010B & Basin Disposal permit # NM-01-00, and IEI will be used for solids (#01001010B) **All recovered liquids were disposed of at Basin Disposal and solids were sent to IEI.**
- 2 The preferred method of closure for all temporary pits will be on-site burial, assuming that all the criteria listed in sub-section (B) of 19 15.17 13 are met **Pit was closed using onsite burial.**
- 3 The surface owner shall be notified of HE's closing of the temporary pit. **Not required for Fed.**
- 4 Within 6 months of the rig off status occurring, HE will ensure that the temporary pits are closed, re-contoured and reseeded. **Compliant with rule.**
- 5 Notice of Closure will be given prior to closure to the Aztec Division office between 72 hours and one week via email, or verbally. The notification of closure will include the following:
 - i. Operator's name
 - ii Location by Unit Letter, Section, Township, and Range, Well name and API number**Notification sent. Filed with C-144 Pit Closure**
- 6 Liner of temporary pit shall be removed above "mud level" after stabilization. Removal of liner will consist of manually or mechanically cutting liner at mud level and removing all remaining liner. Care will be taken to remove all of the liner. All excessive liner will be disposed of at the San Juan County Landfill located on CR 3100. **Liner was removed above "mud level". Liner was removed by manually cutting liner at mud level & removing all remaining liner. All excessive liner was disposed of at San Juan County Landfill.**
- 7 Pit contents shall be mixed with non-waste containing earthen material in order to achieve the solidification process. The solidification process will be accomplished using a combination of natural drying and mechanically mixing. Pit contents will be mixed with non-waste, earthen material to a consistency that is deemed as safe and stable. The mixing ratio shall not exceed 3 parts clean soil to 1 part pit contents. **Pit contents were mixed with non-waste, earthen material that is safe & stable. The solidification process used a combination of natural drying and mechanically mixing. The mixing ratio was approximately 3:1.**
8. A five point composite sample will be taken of the pit using sampling tools and all samples tested per Subsection B of 19.15.17 13(B)(1)(b). In the event that the criteria are not met, all contents will be handled per Subparagraph (a) of Paragraph (1) of Subsection B of 19 15.17 13 i.e., dig and haul. **A five point composite sample was taken of the pit using sampling tools. All samples were tested per Subsection B 19.15.17 13(B)(1)(b). Results are attached.**

Components	Test Method	Limit (mg/kg)
Benzene	EPA SW-846 8021B or 8260B	0.2
BTEX	EPA SW-846 8021B or 8260B	50
TPH	EPA SW-846 418.1	2500
GRO/DRO	EPA SW-846 8015M	500
Chlorides	EPA 300.1	1000/500

9. Upon completion of solidification and testing standards being passed, the pit area will be backfilled with compacted, non-waste containing earthen material. A minimum of four feet of cover shall be achieved and the cover shall include one foot of suitable material to establish vegetation at the site, or the background thickness of topsoil, whichever is greater. If standard testing fails, HE will dig and haul all contents pursuant to 19.15.17 13 i a After doing so, confirmation sampling will be conducted to ensure a release has not occurred.

Pit material past testing standards. The pit was then backfilled with compacted, non-waste containing earthen material.

10. During the stabilization process, if the liner is ripped by equipment, the Aztec OCD office will be notified within 48 hours and the liner will be repaired if possible. If the liner can not be repaired, then all contents will be excavated and removed **Liner was not damaged in the pit closure.**
11. Dig and Haul Material will be transported to IEI (Permit # 010010B). **Not required.**
12. Re-contouring of location will match fit, shape, line, form and texture of the surrounding Reshaping will include drainage control, prevent ponding, and prevent erosion. Natural drainages will be unimpeded and water bars and/or silt traps will be placed in areas where needed to prevent erosion on a large scale. Final re-contour shall have a uniform appearance with smooth surface, fitting the natural landscape **Pit area was re-contoured to match fit, shape, line form and texture of surrounding. Recontour is uniform in appearance with smooth surface-natural landscape.**
13. Notification will be sent to the OCD when the reclaimed area is seeded **C-144 Pit Closure Notice filed 7/12/10.**
14. HE shall seed the disturbed areas the first growing season after the operator closes the pit. Seeding will be accomplished via drilling on the contour whenever practical or by other division-approved methods. BLM stipulated seed mixes will be used on federal lands. Vegetative cover will equal 70% of the native perennial vegetative cover (unimpacted) consisting of at least three native plant species, including at least one grass, but not including noxious weeds, and maintain that cover through two successive growing seasons. Repeated seeding or planting will be continued until successful vegetative growth occurs.

Type	Variety or Cultivator	PLS/A
Western Wheatgrass	Arriba	3 0
Indian Ricegrass	Paloma or Rimrock	3 0
Slender Wheatgrass	San Luis	2 0
Crested Wheatgrass	Hy-crest	3.0
Bottlebrush Squirrealtail	Unknown	2.0
Four-wing Saltbrush	Delar	0.25

Species shall be planted in pounds of pure live seed per acre:

Present Pure Live Seed (PLS) = Purity X Germination/100

Two lots of seed can be compared on the basis of PLS as follows:

Source No. One (poor quality)	Source No two (better quality)
Purity 50 percent	Purity 80 percent
Germination 40 percent	Germination 63 percent
Percent PLS 20 percent	Percent PLS 50 percent
5 lb bulk seed required to make 1 lb PLS	2 lb bulk seed required to make 1 lb PLS

The seeding above was used in 7/2010. After two successive growing seasons, HE will check for vegetative growth. If not successful, repeated seeding will be done.

15. The temporary pit will be located with a steel marker, no less than four inches in diameter, cemented in a hole three feet deep in the center of the onsite burial upon the abandonment of all the wells on the pad. The marker will be flush with the ground to allow access of the active well pad and for safety concerns. The marker will include a threaded collar to be used for future abandonment. The top of the marker will contain a welded steel 12" square plate that indicates the onsite burial of the temporary pit. The plate will be easily removable and a four foot tall riser will be threaded into the top of the collar marker and welded around the base with the operator's information at the time all wells on the pad are abandoned. The operator's information will include the following: Operator Name, Lease Name, Well Name and Number, Unit Number, Section, Township, Range and an indicator that the marker is an onsite burial location. **Steel marker was installed in center as described above with information noted on the plate.**

HE Pit Inspection Log:

UMU 92

API#: 30-045-35052

Date	Visual Inspection
------	-------------------

Drilling:

5/11-5/16/10	OK
--------------	----

Weekly Insp

5/16-5/23	OK
-----------	----

5/23-5/30	OK
-----------	----

5/31-6/06	OK
-----------	----

6/06-6/13	OK
-----------	----

6/14-6/21	OK
-----------	----

6/22-6/29	OK
-----------	----

6/30-7/06	OK
-----------	----

7/06-7/12	OK
-----------	----

Closed pit: 7/12/10

David Morales, Huntington Energy

WNU #92



WNU #92



November 3, 2011

New Mexico Oil Conservation Division
1000 Rio Brazos Rd.
Aztec, NM 87410

Attn: Jonathan Kelly

Re: Ute Mountain Ute
C-144 Permit Information

Dear Jonathan,

Enclosed are the Ute Mountain Ute Pictures for the C-144s that I have been working with you on completing. I will continue to work on the Canyon Largo Unit well C144 information you need. I hope to have that information done by the end of this week. I have not received the pictures from the field for the Canyon Largo Unit wells. When those are received, I will send them to you.

Thank you!

A handwritten signature in cursive script that reads 'Cathy Smith'.

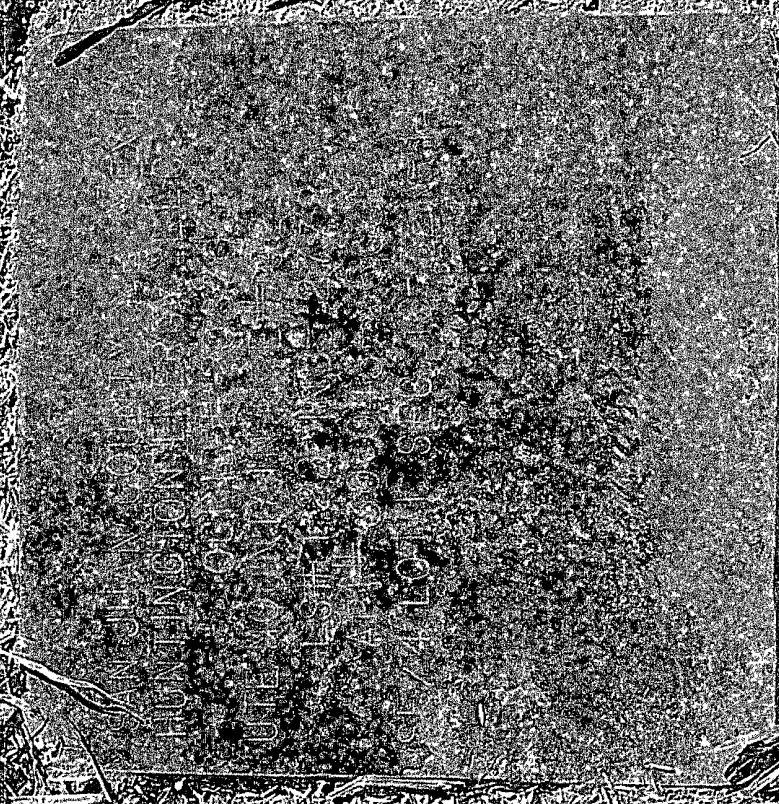
Cathy Smith
Regulatory

RCUO REV 7/11

ENL CONC. 10/1

DIST. 3

8 MAY 02



DISTRICT I
P.O. Box 1980, Hobbs, NM 88241-1980

DISTRICT II
1301 W Grand Avenue, Arleta, NM 88210

DISTRICT III
1000 Rio Brazos Rd., Aztec, N.M. 87410

DISTRICT IV
1220 South St. Francis Dr., Santa Fe, NM 87505

State of New Mexico
Energy, Minerals & Natural Resources Department

OIL CONSERVATION DIVISION

1220 South St. Francis Dr.
Santa Fe, NM 87504-2088

Form C-10
Revised October 12, 2000
Instructions on back
Submit to Appropriate District Office
State Lease - 4 Copies
Fee Lease - 3 Copies

☐ AMENDED REPORT

WELL LOCATION AND ACREAGE DEDICATION PLAT

API Number		Pool Code	Pool Name
		71520	Barker Creek - Dakota
Property Code	Property Name		Well Number
18725	UTE MOUNTAIN UTE		92
GRID No	Operator Name		Elevation
14538	Burlington Resources Oil and		7036'

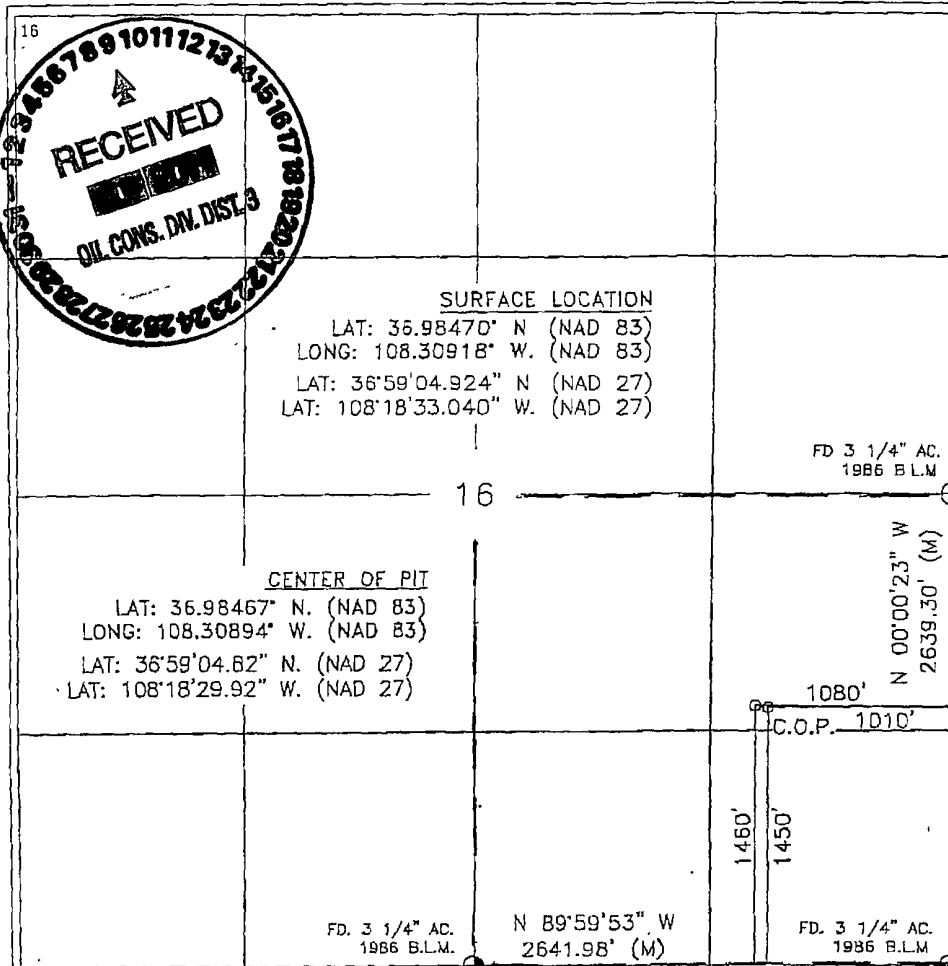
Surface Location

UL or lot no.	Section	Township	Range	Lot Idn	Feet from the	North/South line	Feet from the	East/West line	County
1	16	32-N	14-W		1450	SOUTH	1080	EAST	SAN JUAN

Bottom Hole Location If Different From Surface

UL or lot no.	Section	Township	Range	Lot Idn	Feet from the	North/South line	Feet from the	East/West line	County
Dedicated Acres		Joint or Infill		Consolidation Code		Order No			
E - 160									

NO ALLOWABLE WILL BE ASSIGNED TO THIS COMPLETION UNTIL ALL INTERESTS HAVE BEEN CONSOLIDATED OR A NON-STANDARD UNIT HAS BEEN APPROVED BY THE DIVISION



OPERATOR CERTIFICATION

I hereby certify that the information contained herein is true and complete to the best of my knowledge and belief, and that this organization either owns a work interest or unleased mineral interest in the land including the proposed bottom hole location or has a right to drill this well at this location pursuant to a contract with an owner of such a mineral or working interest, or to a voluntary pooling agreement or a compulsory pooling order heretofore entered by the division.

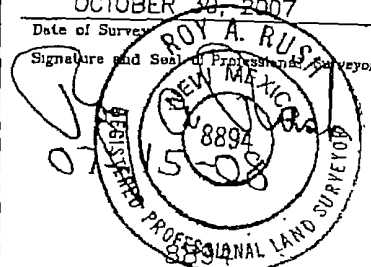
Catherine Smith 8/18/08
Signature Date
Catherine SMITH
Printed Name

SURVEYOR CERTIFICATION

I hereby certify that the well location shown on this was plotted from field notes of actual surveys made by me or under my supervision, and that the same is true and correct to the best of my knowledge and belief.

OCTOBER 30, 2007

Date of Survey
Signature and Seal of Professional Surveyor



Certificate Number

RECEIVED

NOV 24 2008

Bureau of Land Management
Durango Colorado

BURLINGTON RESOURCES OIL & GAS COMPANY LP
UTE MOUNTAIN UTE No. 92, 1460 FSL 1080 FEL

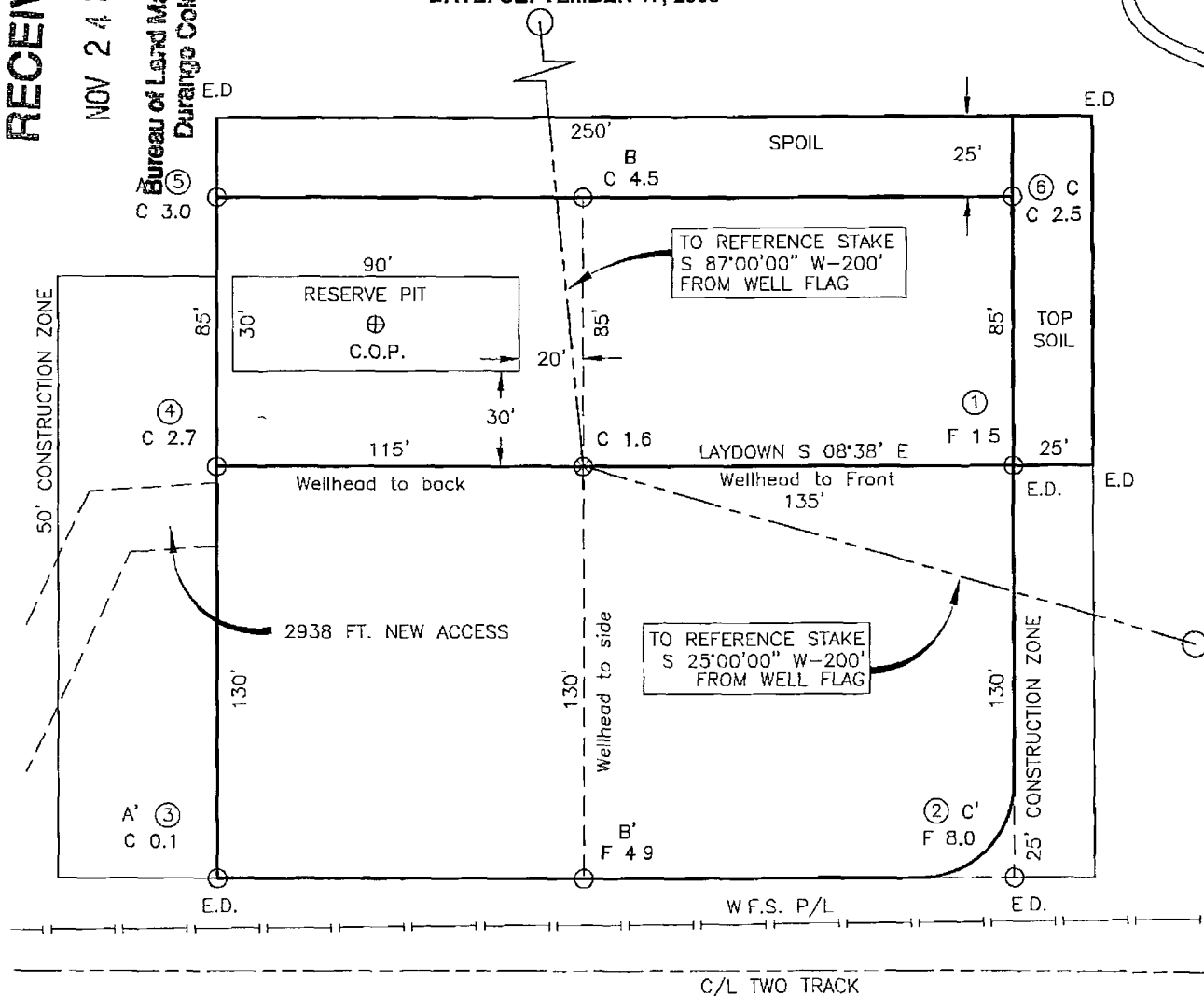
SECTION 16, T-32-N, R-14-W, N.M.P.M.,
SAN JUAN COUNTY, NEW MEXICO
GROUND ELEVATION: 7036'
DATE: SEPTEMBER 17, 2008

WELL FLAG
NAD 83
LAT. = 36.98470° N.
LONG. = 108.30918° W.
NAD 27
LAT. = 36°59'04.92" N.
LONG. = 108°18'33.04" W.

CENTER OF PIT
ELEV. 7037'
NAD 83
LAT. = 36.98486° N.
LONG. = 108.30899° W.
NAD 27
LAT. = 37°59'05.49" N
LONG. = 108°18'32.37" W.



0 25 50
SCALE: 1"=50'



(NOTE: E.D. - EDGE DISTURBANCE)

NOTE:

DAGGETT ENTERPRISES, INC. IS NOT LIABLE FOR UNDERGROUND UTILITIES OR PIPELINES. CONTRACTOR SHOULD CALL NEW MEXICO ONE CALL CENTER TO NOTIFY 48 HOURS PRIOR TO EXCAVATION OR CONSTRUCTION.

PAGE 1 OF 2			
REVISION	DATE	REVISION BY	DATE
PER BIA ON SITE	11/21/08	B K	
PER BLM ON SITE	10/14/08	B K	
CHANGE PAD DIMENSIONS	08/19/08	B K	
ADD T.U.A. (SPOIL/TOB-SOIL)	08/23/08	G V	
CHANGE FORM/ADD C.O.P.	07/11/08	B K	
Daggett Enterprises, Inc. Surveying and Oil Field Services P. O. Box 510 • Farmington, NM 87409 Phone (505) 326-1772 • Fax (505) 326-0019 NEW MEXICO L.S. No. 6894 DRAWN BY: G.V. ROW# HTG073 DATE: 04/04/08			

RECEIVED

NOV 24 2008

Bureau of Land Management
Durango Colorado

BURLINGTON RESOURCES OIL & GAS COMPANY LP
UTE MOUNTAIN UTE No. 92, 1460 FSL 1080 FEL
SECTION 16, T-32-N, R-14-W, N.M.P.M.
SAN JUAN COUNTY, NEW MEXICO
GROUND ELEVATION: 7036'
DATE: SEPTEMBER 17, 2008

WELL FLAG
NAD 83
LAT. = 36.98470° N.
LONG. = 108.30918° W.
NAD 27
LAT. = 36°59'04.92" N.
LONG. = 108°18'33.04" W.


TOTAL PERMITTED PAD AREA = 1.45 ACRES
TOTAL NEW PIPELINE & ACCESS AREA 2938' X 40' = 2.70 ACRES
TOTAL PAD, PIPELINE, & ACCESS AREA = 4.10 ACRES

NOTE:

- 1) ESTIMATED VOLUMES CALCULATED BY AVERAGE END AREA AT CROSS SECTION SHOWN.
- 2) RESERVE PIT DIKE. TO BE 6' ABOVE DEEP SIDE (OVERFLOW - 3' WIDE AND 1' ABOVE SHALLOW SIDE) BLOW PIT OVERFLOW PIPE HALFWAY BETWEEN TOP AND BOTTOM AND TO EXTEND OVER PLASTIC LINER AND INTO BLOW PIT
- 3) DAGGETT ENTERPRISES, INC. IS NOT LIABLE FOR UNDERGROUND UTILITIES OR PIPELINES. CONTRACTOR SHOULD CALL UTILITY NOTIFICATION CENTER OF NEW MEXICO TO BE NOTIFIED 48 HOURS PRIOR TO EXCAVATION OR CONSTRUCTION

PAGE 2 OF 2

REVISION	DATE	REVISED BY
PER BLM ONSITE	10/14/08	B.K.
PER BLM ONSITE	10/14/08	B.K.
PAD DIMENSION CHANGE	09/19/08	B.K.
ADD TUA (SPOIL/TOP SOIL)	08/28/08	CV
CHANGE FORMAT/ADD COP	07/11/08	B.K.



Daggett Enterprises, Inc.
Surveying and Oil Field Services
P. O. Box 510 • Farmington, NM 87499
Phone (505) 326-1772 • Fax (505) 326-5019
NEW MEXICO L.S. No. 5594

DRAWN BY B.K.	CADFILE HTG073_PadInlet*	DATE 07/11/08
ROW# HTG073		