

UNITED STATES
DEPARTMENT OF THE INTERIOR
BUREAU OF LAND MANAGEMENT

Sundry Notices and Reports on Wells

1. Type of Well
GAS

2. Name of Operator
BURLINGTON
RESOURCES OIL & GAS COMPANY LP

3. Address & Phone No. of Operator
PO Box 4289, Farmington, NM 87499 (505) 326-9700

4. Location of Well, Footage, Sec., T, R, M
800' FNL, 900' FEL, Sec. 21, T-27-N, R-5-W, NMPM

5. Lease Number
NMSF-079394
6. If Indian, All. or
Tribe Name
7. Unit Agreement Name

San Juan 27-5 Unit
8. Well Name & Number
San Juan 27-5 U #122
9. API Well No.
30-039-20388
10. Field and Pool
Blanco MV/Basin DK
11. County and State
Rio Arriba Co, NM

12. CHECK APPROPRIATE BOX TO INDICATE NATURE OF NOTICE, REPORT, OTHER DATA

Type of Submission

Type of Action

☒ Notice of Intent
☐ Subsequent Report
☐ Final Abandonment
☐ Abandonment
☒ Recompletion
☐ Plugging Back
☐ Casing Repair
☐ Altering Casing
☒ Other - Commingle
☐ Change of Plans
☐ New Construction
☐ Non-Routine Fracturing
☐ Water Shut off
☐ Conversion to Injection

13. Describe Proposed or Completed Operations

It is intended to recomplate the subject well to the Mesaverde formation according to the procedure below and the attached wellbore diagram. The well will then be down hole commingled. A down hole commingle will be submitted for approval.

Move in, rig up. Trip out of hole with tubing. Trip in hole, set cast iron bridge plug at approximately 7492'. Run cement bond log. Shoot 2 squeeze holes at approximately 5730'. Set cement retainer at approximately 5700'. Circulate 150 sxs of type III (1.39 yield, 14.5 ppg) cement below retainer. Wait on cement. Pressure test casing to 3500 psi for 15 minutes. Perforate and fracture stimulate the Point Lookout, Menefee and Cliff House formations. Flow back well. Mill out frac plugs and cast iron bridge plug over Dakota. Clean out as required. Land tubing. Rig down, move off. Return well to production.

CONDITIONS OF APPROVAL
Adhere to previously issued stipulations.

14. I hereby certify that the foregoing is true and correct.

Signed Nancy Oltmanns Title Senior Staff Specialist Date 3/7/05

(This space for Federal or State Office use)

APPROVED BY _____ Title _____ Date _____

CONDITION OF APPROVAL, if any:

2005 MAR 8 PM 2:36
RECEIVED
070 FARMINGTON NM

District I

1625 N. French Dr., Hobbs, NM 88240

District II

1301 W. Grand Ave., Artesia, NM 88210

District III

1000 Rio Brazos Rd., Aztec, NM 87410

District IV1220 S. St Francis Dr., Santa Fe, NM
87505

State of New Mexico
Energy, Minerals and Natural Resources
Oil Conservation Division
1220 S. St Francis Dr.
Santa Fe, NM 87505

Form C-102

Permit 7892

WELL LOCATION AND ACREAGE DEDICATION PLAT

API Number 30-039-20388	Pool Name BLANCO-MESAVERDE (PRORATED GAS)	Pool Code 72319
Property Code 7454	Property Name SAN JUAN 27 5 UNIT	Well No. 122
OGRID No. 14538	Operator Name BURLINGTON RESOURCES OIL & GAS CO	Elevation 6574

Surface And Bottom Hole Location

UL or Lot A	Section 21	Township 27N	Range 05W	Lot Idn	Feet From 800	N/S Line N	Feet From 900	E/W Line E	County Rio Arriba
Dedicated Acres 320		Joint or Infill		Consolidation Code		Order No.			

OPERATOR CERTIFICATION

I hereby certify that the information contained herein is true and complete to the best of my knowledge and belief.

Electronically Signed By: *Nancy Oltmanns*
Title: Senior Staff Regulatory Specialist
Date: 3-7-05

SURVEYOR CERTIFICATION

I hereby certify that the well location shown on this plat was plotted from field notes of actual surveys made by me or under my supervision, and that the same is true and correct to the best of my belief.

Surveyed By: David Vilven
Date of Survey: 02/18/1971
Certificate Number: 1760

San Juan 27-5 Unit #122

800' FNL , 900' FEL
Unit A, Section 21, T27N, R05W
Rio Arriba County, NM

LAT: LONG:
GL = 6,574' KB= 0,000'

Current Wellbore Diagram

Surface Casing:

9-5/8" 32.3#
Set @ 240'
TOC @ circ to surf

Intermediate Casing:

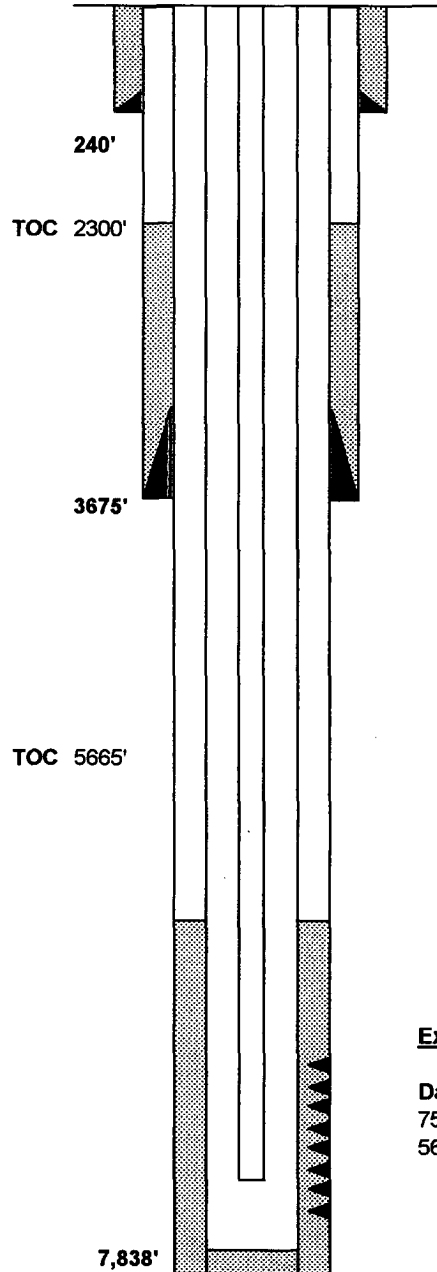
7" 20# K
Set @ 3675'
130 sx cmt
TOC @ 2300' (temp survey)

Tubing:

1-1/2" 2.9# J-55
Set @ 7774'

Production Casing:

4-1/2" 11.6, 10.5# KS
Set: 7,838'
330 sx or 660 cuft cmt
TOC calc 75% @ 5665'



Mesa Verde 5,022'
Point Lookout 5,514'
Gallup 6,693'
Greenhorn 7,454'
Graneros 7,512'
Two Wells 7,645'

Existing Stimulation:

Dakota
7542'-7766'
56,000# sand, 56,690 gal slickwater

PBTD= 7,824'
TD= 7,838'