

**UNITED STATES
DEPARTMENT OF THE INTERIOR
BUREAU OF LAND MANAGEMENT**

RECEIVED**JAN 24 2012**

Sundry Notices and Reports on Wells

Farmington Field Office
Bureau of Land Management1. Type of Well
GAS

2. Name of Operator

ConocoPhillips

3. Address & Phone No. of Operator

PO Box 4289, Farmington, NM 87499 (505) 326-9700

4. Location of Well, Footage, Sec., T, R, M

Unit N (SESW), 1115' FSL & 1650' FWL, Section 11, T25N, R5W, NMPM
15 - OGD 16505. Lease Number
Jicarilla Contract 145
6. If Indian, All. or
Tribe Name
Jicarilla Apache
7. Unit Agreement Name8. Well Name & Number
Jicarilla K 6

9. API Well No.

30-039-06067

10. Field and Pool
South Blanco Pictured Cliffs11. County and State
Rio Arriba, NM**12. CHECK APPROPRIATE BOX TO INDICATE NATURE OF NOTICE, REPORT, OTHER DATA**

Type of Submission

☒ Notice of Intent☐ Subsequent Report☐ Final Abandonment

Type of Action

☒ Abandonment☐ Recompletion☐ Plugging☐ Casing Repair☐ Altering Casing☐ Change of Plans☐ New Construction☐ Non-Routine Fracturing☐ Water Shut off☐ Conversion to Injection☐ Other -**13. Describe Proposed or Completed Operations**

ConocoPhillips Company requests permission to P&A the subject well per the attached procedure, current and proposed wellbore schematics.

**Notify NMOCD 24 hrs
prior to beginning
operations****RCVD JAN 30 '12
OIL CONS. DIV.****DIST. 3**

Run CBL and submit to agencies for review prior to cementing

14. I hereby certify that the foregoing is true and correct.Signed Crystal Tafoya Crystal TafoyaTitle Staff Regulatory TechnicianDate 1/24/2012

(This space for Federal or State Office use)

APPROVED BY Original Signed: Stephen Mason Title _____

Date

JAN 27 2012

CONDITION OF APPROVAL, if any:

Title 18 U.S.C. Section 1001, makes it a crime for any person knowingly and willfully to make any department or agency of the United States any false, fictitious or fraudulent statements or representations as to any matter within its jurisdiction

NMOCD

A

ConocoPhillips
JICARILLA K 6
Expense - P&A

Lat 36° 24' 35.528" N

Long 107° 19' 53.328" W

PROCEDURE

Note: This project requires a NMOCD C-144 CLEZ Closed-Loop System Permit for the use of an A-Plus steel tank to handle waste fluids circulated from the well and cement wash up. All cement volumes use 100% excess outside pipe and 50' excess inside pipe. The stabilizing wellbore fluid will be 8.3 ppg, sufficient to balance all exposed formation pressures. All cement will be ASTM Type II mixed at 15.6 ppg with a 1.18 cf/sk yield. Plug depths may change per CBL.

1. Hold pre-job safety meeting. Comply with all NMOCD, BLM, and COPC safety and environmental regulations. Test rig anchors prior to moving in rig.
2. MIRU workover rig. Check casing, tubing, and bradenhead pressures and record them in Wellview.
3. When an existing primary valve (i.e. casing valve) is to be used, the existing piping should be removed and replaced with the appropriate piping for the intended operation.
4. RU blow lines from casing valves and begin blowing down casing pressure. Kill well with water, as necessary, and at least pump tubing capacity of water down tubing.
5. ND wellhead and NU BOPE. Function test BOP. PU and remove tubing hanger.
6. TOOH with tubing (per pertinent data sheet).

Tubing:	Yes	Size:	2-3/8"	Length:	3034
Packer:	No	Size:		Depth:	

7. PU CIBP for 5-1/2", 15.5#, J-55 casing and set at 2,988'. Pressure test casing to 800 psi. If casing does not test, then spot and tag subsequent plugs as necessary. Run CBL from 2,988' to surface. Call Production Engineer to confirm cement plug depths.

2441'

8. Plug #1 (Pictured Cliffs perms & Pictured Cliffs, Fruitland, Kirtland, & Ojo Alamo formation tops, 2,988' - 2,468'):

Pressure test tubing to 1000#. Load casing with water and attempt to establish circulation. Mix 65 sx Class B cement and spot a balanced plug inside the casing above CIBP to isolate the Pictured Cliffs perms and Pictured Cliffs, Fruitland, Kirtland, & Ojo Alamo formation tops.

(27) 1171

9. Plug #2 (Nacimiento formation top, 1,458' - 1,058'):

Perforate 3 HSC holes at 1,458'. Set a cement retainer at 1,108'. Establish injection rate into squeeze holes. Mix 47 sx Class B cement. Sqz 30 sx Class B cement into HSC holes and leave 17 sx cement inside casing to isolate the Nacimiento formation top. POOH and LD tubing.

10. Plug #3 (Surface casing shoe and surface plug, 241' - Surface):

Perforate 3 HSC holes at 241'. Establish circulation out bradenhead with water and circulate BH annulus clean. Mix 105 sx Class B cement and pump down production casing to circulate good cement out bradenhead. Shut in well and WOC.

11. Nipple down BOP and cut off casing below the casing flange. **Top off cement in surface casing annulus, if needed.** Install P&A marker with cement to comply with regulations. Rig down, move off location, cut off anchors, and restore location.

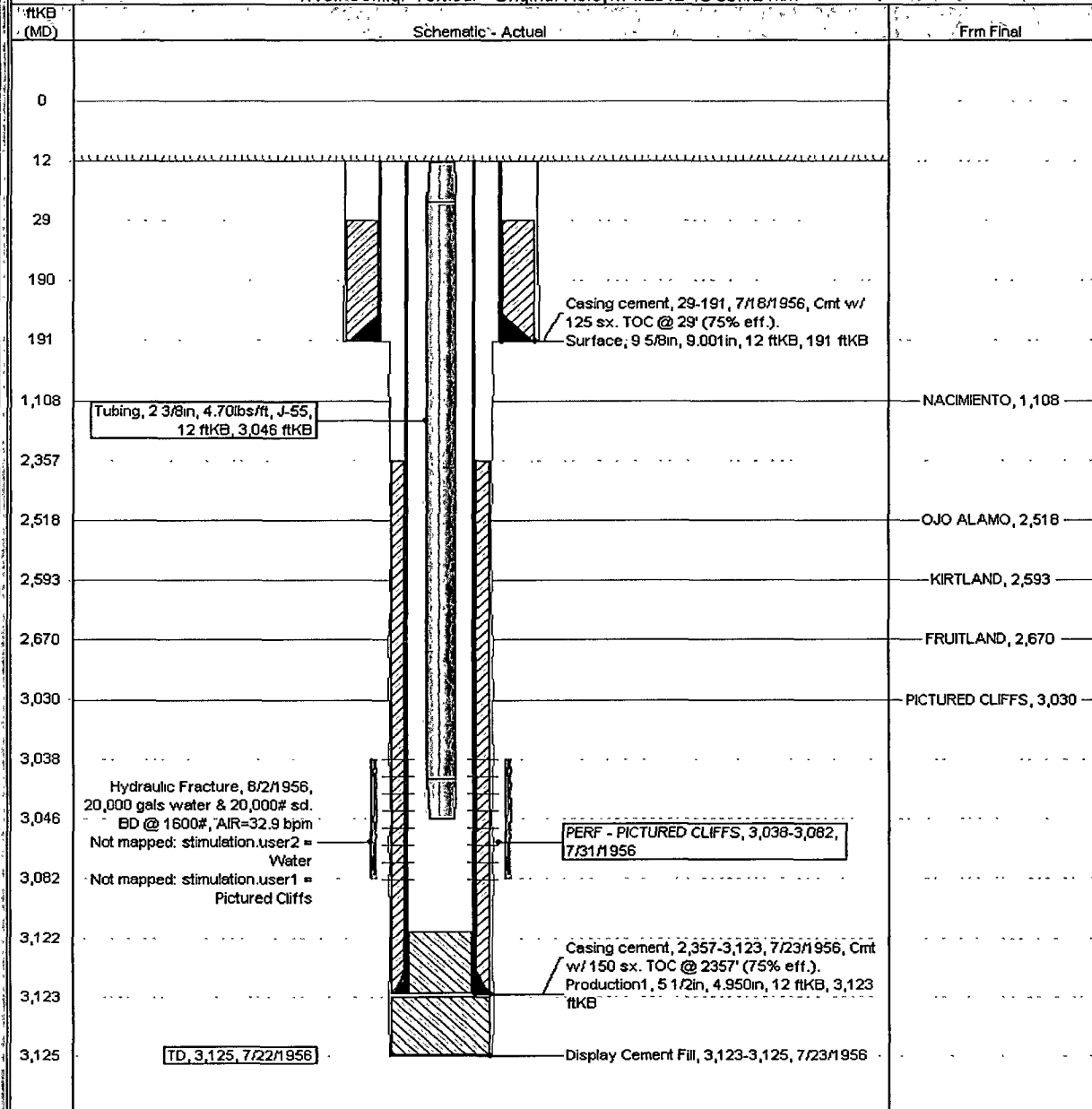


Current Schematic

Well Name: JICARILLA K006

API / UWI	Surface Legal Location	Field Name	License No.	State/Province	Well Configuration Type	Edr
3003906067	NMPM-25N-05V-11-N	PC		NEW MEXICO	Vertical	
Ground Elevation (ft)	Original KA/RT Elevation (ft)	KB-Grout Distance (ft)	KB-Casing Hanger Distance (ft)	KB-Tubing Hanger Distance (ft)		
6,776.00	6,788.00	42.00	6,788.00	6,788.00		

Well Config. Vertical - Original Hole, 1/4/2012 10:36:12 AM



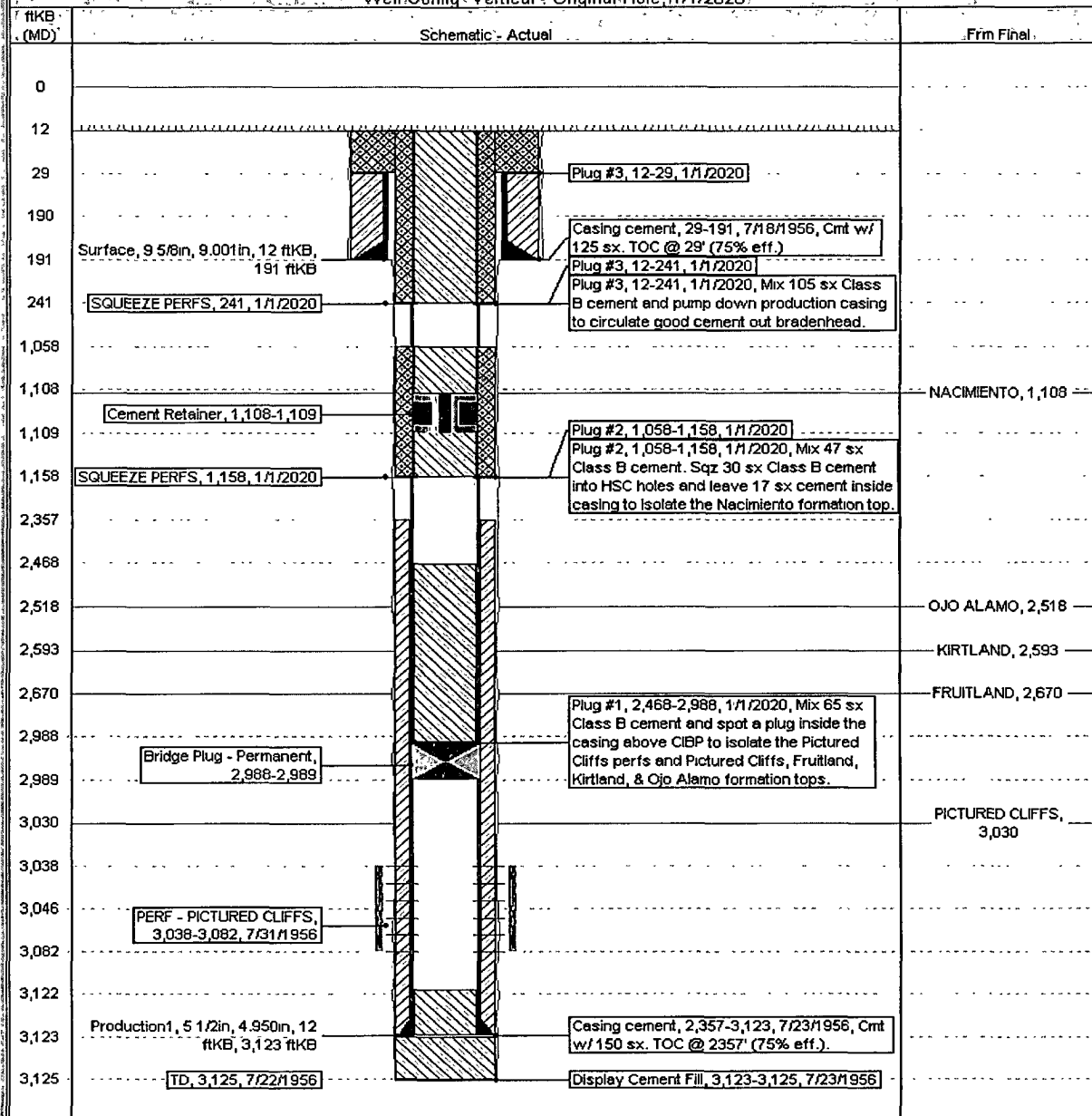


Well Name: JIGARILLA K006

Proposed Schematic

API/DAI	Surface Legal Location	Field Name	License No.	State/Province	Well Configuration Type	Edit
3003906067	NMPM-25N-05VV-11-N	PC		NEW MEXICO	Vertical	
Ground Elevation (ft)	Original H.P.T. Elevation (ft)	H.B. Ground Distance (ft)	H.B. Casing Floor Distance (ft)	H.B. Tubing Hanger Distance (ft)		
6,776.00	6,788.00	42'00	6,788.00	6,788.00		

Well Config: Vertical - Original/Hole: 1/1/2020



**UNITED STATES DEPARTMENT OF THE INTERIOR
BUREAU OF LAND MANAGEMENT
FARMINGTON DISTRICT OFFICE
1235 LA PLATA HIGHWAY
FARMINGTON, NEW MEXICO 87401**

Attachment to notice of
Intention to Abandon:

Re: Permanent Abandonment
Well: 6 Jicarilla K

CONDITIONS OF APPROVAL

1. Plugging operations authorized are subject to the attached "General Requirements for Permanent Abandonment of Wells on Federal and Indian Lease."
2. Farmington Office is to be notified at least 24 hours before the plugging operations commence (505) 599-8907.
3. The following modifications to your plugging program are to be made:
 - a) Bring the top of the Pictured Cliffs/Fruitland/ Kirtland/Ojo Alamo plug to 2441'.
 - b) Place the Nacimiento plug from 1271' – 1171' inside and outside the 5 ½" casing.

You are also required to place cement excesses per 4.2 and 4.4 of the attached General Requirements.

Office Hours: 7:45 a.m. to 4:30 p.m.