

**UNITED STATES  
DEPARTMENT OF THE INTERIOR  
BUREAU OF LAND MANAGEMENT**

**RECEIVED****JAN 24 2012**

## Sundry Notices and Reports on Wells

Farmington Field Office  
Bureau of Land Management1. Type of Well  
GAS

2. Name of Operator

**BURLINGTON****RESOURCES OIL & GAS COMPANY LP**

3. Address &amp; Phone No. of Operator

PO Box 4289, Farmington, NM 87499 (505) 326-9700

4. Location of Well, Footage, Sec., T, R, M

Unit G (SWNE), 1550' FNL &amp; 1650' FEL, Section 10, T25N, R6W, NMPM

5. Lease Number  
SF-078885-A6. If Indian, All. or  
Tribe Name7. Unit Agreement Name  
Canyon Largo Unit8. Well Name & Number  
Canyon Largo Unit 163

9. API Well No.

30-039-20309

10. Field and Pool  
Otero Chacra11. County and State  
Rio Arriba, NM

## 12. CHECK APPROPRIATE BOX TO INDICATE NATURE OF NOTICE, REPORT, OTHER DATA

Type of Submission

☒

Notice of Intent

Type of Action

☒

Abandonment

☐ Change of Plans☐ Other -☐ Recompletion☐ New Construction☐ Subsequent Report☐ Plugging☐ Non-Routine Fracturing☐ Final Abandonment☐ Casing Repair☐ Water Shut off☐ Altering Casing☐ Conversion to Injection

## 13. Describe Proposed or Completed Operations

Burlington Resources requests permission to P&amp;A the subject well per the attached procedure, current and proposed wellbore schematics.

Notify NMOCD 24 hrs  
prior to beginning  
operations

RCVD JAN 30 '12

OIL CONS. DIV.

DIST. 3

## 14. I hereby certify that the foregoing is true and correct.

Signed

Crystal Tafoya

Crystal Tafoya

Title: Staff Regulatory Technician

Date 1/24/2012

(This space for Federal or State Office use)

APPROVED BY Original Signed: Stephen Mason

Title

Date

JAN 26 2012

CONDITION OF APPROVAL, if any:

Title 18 U.S.C. Section 1001, makes it a crime for any person knowingly and willfully to make any department or agency of the United States any false, fictitious or fraudulent statements or representations as to any matter within its jurisdiction

NMOCD

**ConocoPhillips**  
**CANYON LARGO UNIT 163**  
**Expense - P&A**

Lat 36° 25' 0.444" N

Long 107° 27' 3.168" W

**PROCEDURE**

**Note:** This project requires a NMOCD C-144 CLEZ Closed-Loop System Permit for the use of an A-Plus steel tank to handle waste fluids circulated from the well and cement wash up. All cement volumes use 100% excess outside pipe and 50' excess inside pipe. The stabilizing wellbore fluid will be 8.3 ppg, sufficient to balance all exposed formation pressures. All cement will be ASTM Type II mixed at 15.6 ppg with a 1.18 cf/sk yield.

1. Hold pre-job safety meeting. Comply with all NMOCD, BLM, and COPC safety and environmental regulations. Test rig anchors prior to moving in rig.
2. MIRU workover rig. Check casing, tubing, and bradenhead pressures and record them in Wellview.
3. When an existing primary valve (i.e. casing valve) is to be used, the existing piping should be removed and replaced with the appropriate piping for the intended operation.
4. RU blow lines from casing valves and begin blowing down casing pressure. Kill well with water, as necessary, and at least pump tubing capacity of water down tubing.
5. ND wellhead and NU BOPE. Function test BOP.
6. PU 1-1/4" workstring and round trip gauge ring from top perforation (3,716') to surface.
7. RU slickline and set CIBP at 3,666' (50' above top perf).

**8. Plug #1 (Chacra perfs & Chacra, Pictured Cliffs, Fruitland, & Kirtland formation tops, 3,666' - 2,270'):**

RIH to CIBP at 3,666'. Load casing with water and attempt to establish circulation. Pressure test tubing to 1000#. Pressure test casing to 800#. Mix 38 sx Class B cement and spot inside the casing above CIBP to 2,270 to isolate the Chacra perforations & Chacra, Pictured Cliffs, Fruitland, & Kirtland formation tops. PUH to 2,270' and circulate clean. POOH.

**9. Plug #2 (Ojo Alamo formation top, <sup>2092 1992</sup>2,260' - <sup>1992</sup>2,140'):**

Perforate 3 HSC holes at <sup>1992</sup>2,260'. PU cement retainer for 2-7/8" 6.4# J-55 casing and set at <sup>1992</sup>2,190'. Establish injection rate into squeeze holes. Mix 47 sx Class B cement. Sqz 42 sx Class B cement into HSC holes and leave 5 sx cement inside casing to isolate the Ojo Alamo formation top. POOH.

**10. Plug #3 (Nacimiento formation top, <sup>74/ 641</sup>1,840' - <sup>74/ 641</sup>940'):**

Perforate 3 HSC holes at <sup>74/ 641</sup>1,840'. Set a cement retainer at <sup>74/ 641</sup>990'. TIH with tubing and sting into CR. Establish injection rate into squeeze holes. Mix 40 sx Class B cement. Sqz 35 sx Class B cement into HSC holes and leave 5 sx cement inside casing to isolate the Nacimiento formation top. POOH and LD workstring.

**11. Plug #4 (Surface casing shoe and surface plug, 187' - Surface):**

Perforate 3 HSC holes at 187'. Establish circulation out bradenhead with water and circulate BH annulus clean. Mix 75 sx Class B cement and pump down production casing to circulate good cement out bradenhead. Shut in well and WOC.

12. Nipple down BOP and cut off casing below the casing flange. Install P&A marker with cement to comply with regulations. Rig down, move off location, cut off anchors, and restore location.

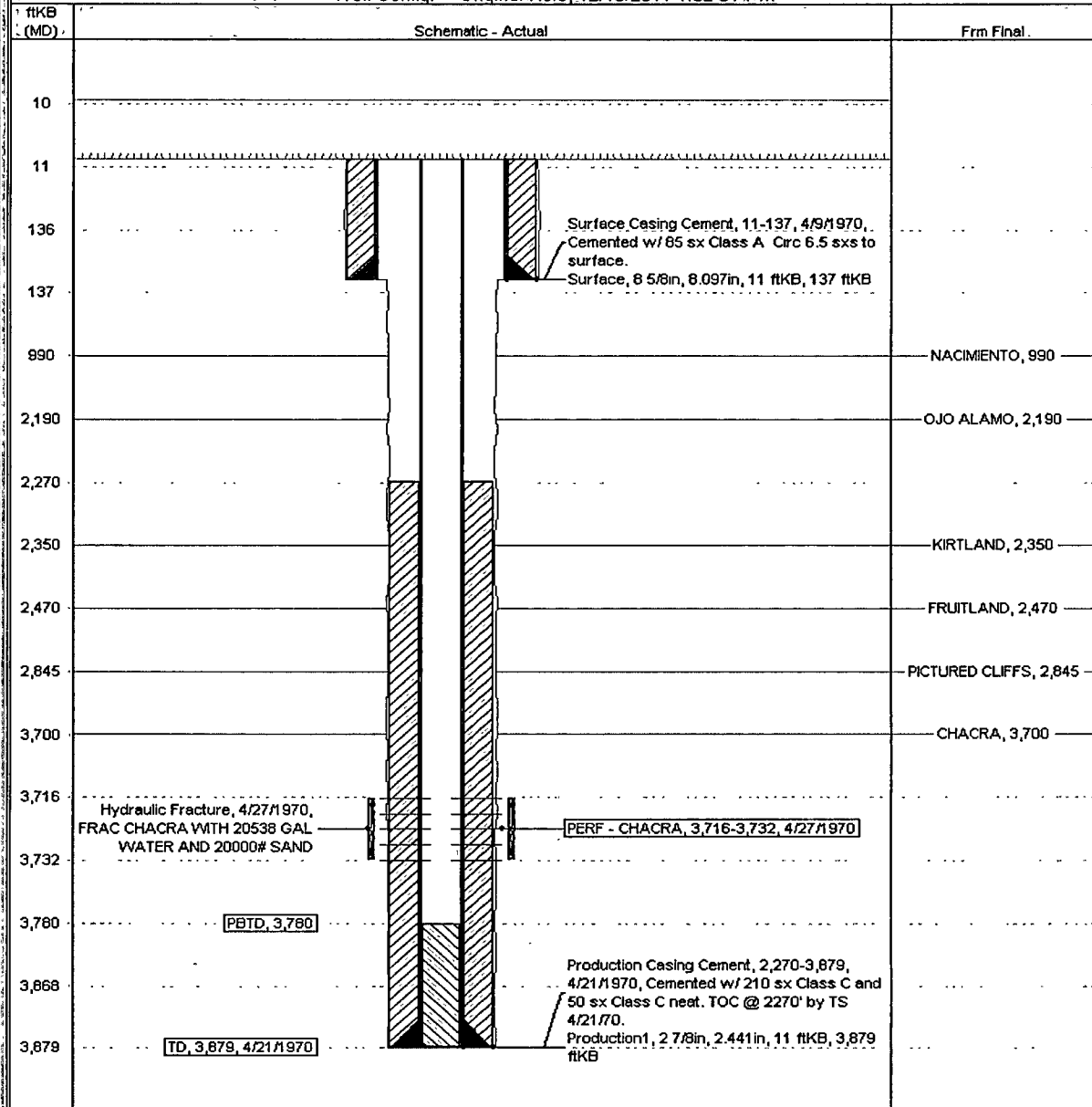


# Current Schematic

Well Name: CANYON LARGO UNIT #163

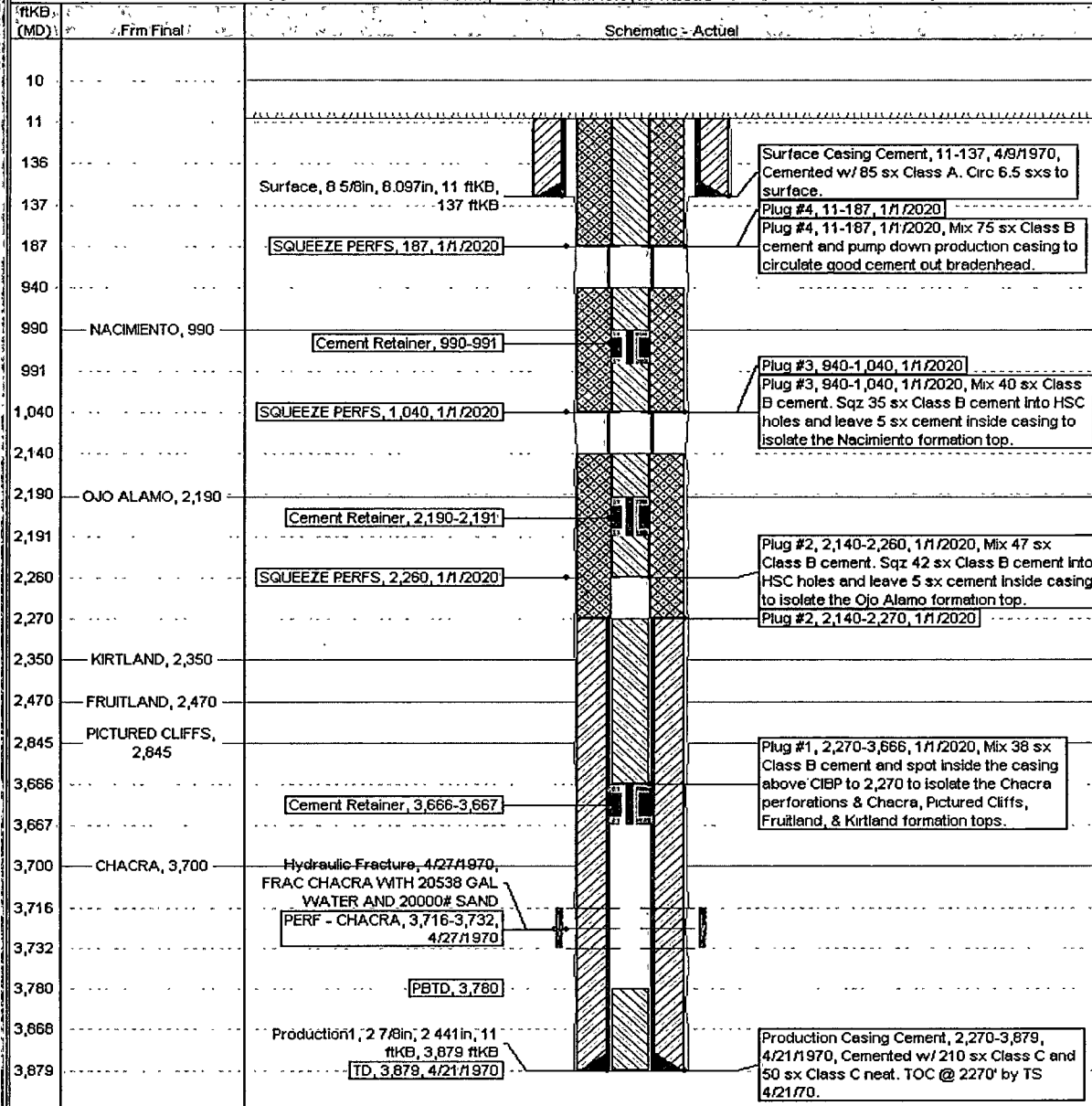
API/UVI 3003920309	Surface Legal Location NMPM,010-025N-006W	Field Name OTERO (CHACRA) GAS	License No.	State/Province NEW MEXICO	Well Configuration Type	Edit
Ground Elevation (ft) 6,661.00	Original KB/RT Elevation (ft) 6,672.00	KB-Grout Distance (ft) 11.00	KB-Casing/Grout Distance (ft)	KB-Tubing Hanger Distance (ft)		

Well Config: - Original Hole, 12/13/2011 1:32:51 PM



API/USVI 3003920309	Surface Legal Location NMPM 010-025N-006W	Field Name OTERO (CHACRA) GAS	License No	State/Province NEW MEXICO	Well Configuration Type	Edit
Ground Elevation (ft) 6,661.00	Original I.B./RT Elevation (ft) 6,672.00	I.B.-Ground Distance (ft) 111.00	I.B.-Casing (Range) Distance (ft)	I.B.-Tubing (Range) Distance (ft)		

Well Config: -Original/Hole: 1/1/2020



**UNITED STATES DEPARTMENT OF THE INTERIOR  
BUREAU OF LAND MANAGEMENT  
FARMINGTON DISTRICT OFFICE  
1235 LA PLATA HIGHWAY  
FARMINGTON, NEW MEXICO 87401**

Attachment to notice of  
Intention to Abandon:

Re: Permanent Abandonment  
Well: 163 Canyon Largo Unit

**CONDITIONS OF APPROVAL**

1. Plugging operations authorized are subject to the attached "General Requirements for Permanent Abandonment of Wells on Federal and Indian Lease."
2. Farmington Office is to be notified at least 24 hours before the plugging operations commence (505) 599-8907.
3. The following modifications to your plugging program are to be made:
  - a) Place the Ojo Alamo plug from 2092' – 1992' inside and outside the 2 7/8" casing.
  - b) Place the Nacimiento plug from 741' – 641' inside and outside the 2 7/8" casing.

You are also required to place cement excesses per 4.2 and 4.4 of the attached General Requirements.

Office Hours: 7:45 a.m. to 4:30 p.m.