

DISTRICT I
1625 N. French Dr., Hobbs, N.M. 88240

State of New Mexico
Energy, Minerals & Natural Resources Department

Form C-102
Revised October 12, 2005

DISTRICT II
1301 West Grand Avenue, Artesia, N.M. 88210

OIL CONSERVATION DIVISION
1220 South St. Francis Dr.
Santa Fe, NM 87505

Submit to Appropriate District Office
State Lease - 4 Copies
Fee Lease - 3 Copies

DISTRICT III
1000 Rio Brazos Rd., Aztec, N.M. 87410

DISTRICT IV
1220 S. St. Francis Dr., Santa Fe, NM 87505

"as drilled plat"

☐ AMENDED REPORT

WELL LOCATION AND ACREAGE DEDICATION PLAT

¹ API Number 30-045-35266	² Pool Code 71599/72319	³ Pool Name BASIN DAKOTA/BLANCO MESAVERDE
⁴ Property Code 31838	⁵ Property Name MOORE LS	⁶ Well Number 5B
⁷ GRID No. 217817	⁸ Operator Name CONOCOPHILLIPS COMPANY	⁹ Elevation 6471'

¹⁰ Surface Location

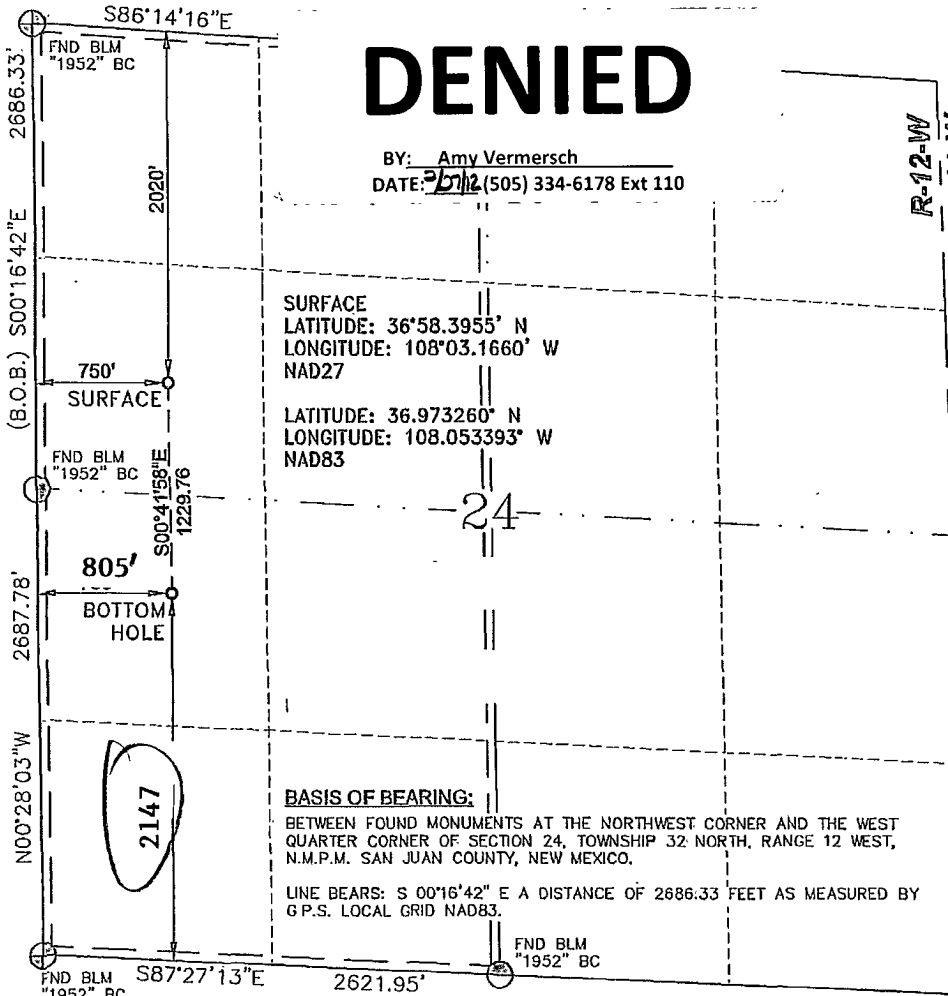
UL or lot no.	Section	Township	Range	Lot Idn	Feet from the	North/South line	Feet from the	East/West line	County
E	24	32-N	12-W		2020	NORTH	750	WEST	SAN JUAN

¹¹ Bottom Hole Location If Different From Surface

UL or lot no.	Section	Township	Range	Lot Idn	Feet from the	North/South line	Feet from the	East/West line	County
L	24	32-N	12-W		2133	SOUTH	805	WEST	SAN JUAN

¹² Dedicated Acres DK 320.00 ACRES W/2 MV 320.00 ACRES W/2	¹³ Joint or Infill	¹⁴ Consolidation Code	¹⁵ Order No.
---	-------------------------------	----------------------------------	-------------------------

NO ALLOWABLE WILL BE ASSIGNED TO THIS COMPLETION UNTIL ALL INTERESTS HAVE BEEN CONSOLIDATED
OR A NON-STANDARD UNIT HAS BEEN APPROVED BY THE DIVISION



¹⁷ OPERATOR CERTIFICATION

I hereby certify that the information contained herein is true and complete to the best of my knowledge and belief, and that this organization either owns a working interest or undivided mineral interest in the land including the proposed bottom hole location or has a right to drill this well at this location pursuant to a contract with an owner of such a mineral or a working interest, or to a voluntary pooling agreement or a compulsory pooling order heretofore entered by the division.

Denise Journey
Signature
Denise Journey
Printed Name

¹⁸ SURVEYOR CERTIFICATION

I hereby certify that the well location shown on this plat was plotted from field notes of actual surveys made by me or under my supervision, and that the same is true and correct to the best of my belief.

NOVEMBER 10, 2010

Date of Survey

Signature and Seal of



GLEN W. RUSSELL
Certificate Number

15703

A

PC