

District I
1625 N French Dr, Hobbs, NM 88240
District II
1301 W Grand Avenue, Artesia, NM 88210
District III
1000 Rio Brazos Road, Aztec, NM 87410
District IV
1220 S St Francis Dr, Santa Fe, NM 87505

State of New Mexico
Energy Minerals and Natural Resources
Department
Oil Conservation Division
1220 South St. Francis Dr.
Santa Fe, NM 87505

Form C-144
July 21, 2008

For temporary pits, closed-loop systems, and below-grade tanks, submit to the appropriate NMOCD District Office.
For permanent pits and exceptions submit to the Santa Fe Environmental Bureau office and provide a copy to the appropriate NMOCD District Office

**Pit, Closed-Loop System, Below-Grade Tank, or
Proposed Alternative Method Permit or Closure Plan Application**

- Type of action: ☐ Permit of a pit, closed-loop system, below-grade tank, or proposed alternative method
☒ Closure of a pit, closed-loop system, below-grade tank, or proposed alternative method
☐ Modification to an existing permit
☐ Closure plan only submitted for an existing permitted or non-permitted pit, closed-loop system, below-grade tank, or proposed alternative method

Instructions: Please submit one application (Form C-144) per individual pit, closed-loop system, below-grade tank or alternative request

Please be advised that approval of this request does not relieve the operator of liability should operations result in pollution of surface water, ground water or the environment. Nor does approval relieve the operator of its responsibility to comply with any other applicable governmental authority's rules, regulations or ordinances.

1.
Operator: EnerVest Operating, LLC OGRID # 143199
Address 1001 Fannin St. Ste 800 Houston, Texas 77002
Facility or well name Jicarilla C 8 Tank #1
API Number 30-039-08148 OCD Permit Number 6728
U/L or Qtr/Qtr E Section 13 Township 26N Range 05W County: Rio Arriba
Center of Proposed Design Latitude 36 48893 Longitude 107.31687 NAD: ☐ 1927 ☒ 1983
Surface Owner: ☐ Federal ☐ State ☐ Private ☒ Tribal Trust or Indian Allotment

2.
☐ **Pit:** Subsection F or G of 19 15 17 11 NMAC
Temporary. ☐ Drilling ☐ Workover
☐ Permanent ☐ Emergency ☐ Cavitation ☐ P&A
☐ Lined ☐ Unlined Liner type Thickness _____ mil ☐ LLDPE ☐ HDPE ☐ PVC ☐ Other _____
☐ String-Reinforced
Liner Seams. ☐ Welded ☐ Factory ☐ Other _____ Volume: _____ bbl Dimensions: L _____ x W _____ x D _____

RCVD FEB 9 '12
OIL CONS. DIV.
DIST. 3

3.
☐ **Closed-loop System:** Subsection H of 19 15 17.11 NMAC
Type of Operation: ☐ P&A ☐ Drilling a new well ☐ Workover or Drilling (Applies to activities which require prior approval of a permit or notice of intent)
☐ Drying Pad ☐ Above Ground Steel Tanks ☐ Haul-off Bins ☐ Other _____
☐ Lined ☐ Unlined Liner type Thickness _____ mil ☐ LLDPE ☐ HDPE ☐ PVC ☐ Other _____
Liner Seams ☐ Welded ☐ Factory ☐ Other _____

4.
☒ **Below-grade tank:** Subsection I of 19 15.17.11 NMAC
Volume: 45 bbl Type of fluid: Primarily produced water w/ compressor skid precipitation & incidental lubricating oil
Tank Construction material Steel w/ expanded metal cover
☐ Secondary containment with leak detection ☐ Visible sidewalls, liner, 6-inch lift and automatic overflow shut-off
☐ Visible sidewalls and liner ☐ Visible sidewalls only ☒ Other _____ electronic monitoring _____
Liner type: Thickness _____ mil ☐ HDPE ☐ PVC ☒ Other _____

5.
☐ **Alternative Method:**
Submittal of an exception request is required Exceptions must be submitted to the Santa Fe Environmental Bureau office for consideration of approval.

6

Fencing: Subsection D of 19.15 17.11 NMAC (*Applies to permanent pits, temporary pits, and below-grade tanks*)

- ☐ Chain link, six feet in height, two strands of barbed wire at top (*Required if located within 1000 feet of a permanent residence, school, hospital, institution or church*)
- ☐ Four foot height, four strands of barbed wire evenly spaced between one and four feet
- ☐ Alternate Please specify _____ 42" Hog-wire fence with 2 strands barbed-wire on top _____

7.

Netting: Subsection E of 19 15 17.11 NMAC (*Applies to permanent pits and permanent open top tanks*)

- ☒ Screen ☐ Netting ☐ Other _____
- ☐ Monthly inspections (If netting or screening is not physically feasible)

8

Signs: Subsection C of 19 15 17.11 NMAC

- ☐ 12"x 24", 2" lettering, providing Operator's name, site location, and emergency telephone numbers
- ☒ Signed in compliance with 19 15 3 103 NMAC

9.

Administrative Approvals and Exceptions:

Justifications and/or demonstrations of equivalency are required. Please refer to 19.15.17 NMAC for guidance

Please check a box if one or more of the following is requested, if not leave blank:

- ☐ Administrative approval(s). Requests must be submitted to the appropriate division district or the Santa Fe Environmental Bureau office for consideration of approval
- ☐ Exception(s). Requests must be submitted to the Santa Fe Environmental Bureau office for consideration of approval

10.

Siting Criteria (regarding permitting): 19 15 17.10 NMAC

Instructions: The applicant must demonstrate compliance for each siting criteria below in the application. Recommendations of acceptable source material are provided below. Requests regarding changes to certain siting criteria may require administrative approval from the appropriate district office or may be considered an exception which must be submitted to the Santa Fe Environmental Bureau office for consideration of approval. Applicant must attach justification for request. Please refer to 19.15.17.10 NMAC for guidance. Siting criteria does not apply to drying pads or above-grade tanks associated with a closed-loop system.

Ground water is less than 50 feet below the bottom of the temporary pit, permanent pit, or below-grade tank	<input type="checkbox"/> Yes <input type="checkbox"/> No
- NM Office of the State Engineer - iWATERS database search, USGS; Data obtained from nearby wells	
Within 300 feet of a continuously flowing watercourse, or 200 feet of any other significant watercourse or lakebed, sinkhole, or playa lake (measured from the ordinary high-water mark)	<input type="checkbox"/> Yes <input type="checkbox"/> No
- Topographic map, Visual inspection (certification) of the proposed site	
Within 300 feet from a permanent residence, school, hospital, institution, or church in existence at the time of initial application (<i>Applies to temporary, emergency, or cavitation pits and below-grade tanks</i>)	<input type="checkbox"/> Yes <input type="checkbox"/> No
- Visual inspection (certification) of the proposed site, Aerial photo, Satellite image	<input type="checkbox"/> NA
Within 1000 feet from a permanent residence, school, hospital, institution, or church in existence at the time of initial application. (<i>Applies to permanent pits</i>)	<input type="checkbox"/> Yes <input type="checkbox"/> No
- Visual inspection (certification) of the proposed site, Aerial photo, Satellite image	<input type="checkbox"/> NA
Within 500 horizontal feet of a private, domestic fresh water well or spring that less than five households use for domestic or stock watering purposes, or within 1000 horizontal feet of any other fresh water well or spring, in existence at the time of initial application	<input type="checkbox"/> Yes <input type="checkbox"/> No
- NM Office of the State Engineer - iWATERS database search, Visual inspection (certification) of the proposed site	
Within incorporated municipal boundaries or within a defined municipal fresh water well field covered under a municipal ordinance adopted pursuant to NMSA 1978, Section 3-27-3, as amended.	<input type="checkbox"/> Yes <input type="checkbox"/> No
- Written confirmation or verification from the municipality; Written approval obtained from the municipality	
Within 500 feet of a wetland.	<input type="checkbox"/> Yes <input type="checkbox"/> No
- US Fish and Wildlife Wetland Identification map, Topographic map, Visual inspection (certification) of the proposed site	
Within the area overlying a subsurface mine.	<input type="checkbox"/> Yes <input type="checkbox"/> No
- Written confirmation or verification or map from the NM EMNRD-Mining and Mineral Division	
Within an unstable area	<input type="checkbox"/> Yes <input type="checkbox"/> No
- Engineering measures incorporated into the design, NM Bureau of Geology & Mineral Resources; USGS, NM Geological Society; Topographic map	
Within a 100-year floodplain	<input type="checkbox"/> Yes <input type="checkbox"/> No
- FEMA map	

11.

Temporary Pits, Emergency Pits, and Below-grade Tanks Permit Application Attachment Checklist: Subsection B of 19.15.17.9 NMAC**Instructions:** Each of the following items must be attached to the application. Please indicate, by a check mark in the box, that the documents are attached.

- ☐ Hydrogeologic Report (Below-grade Tanks) - based upon the requirements of Paragraph (4) of Subsection B of 19.15.17.9 NMAC
- ☐ Hydrogeologic Data (Temporary and Emergency Pits) - based upon the requirements of Paragraph (2) of Subsection B of 19.15.17.9 NMAC
- ☐ Siting Criteria Compliance Demonstrations - based upon the appropriate requirements of 19.15.17.10 NMAC
- ☐ Design Plan - based upon the appropriate requirements of 19.15.17.11 NMAC
- ☐ Operating and Maintenance Plan - based upon the appropriate requirements of 19.15.17.12 NMAC
- ☐ Closure Plan (Please complete Boxes 14 through 18, if applicable) - based upon the appropriate requirements of Subsection C of 19.15.17.9 NMAC and 19.15.17.13 NMAC

☐ Previously Approved Design (attach copy of design) API Number: _____ or Permit Number: _____

12.

Closed-loop Systems Permit Application Attachment Checklist: Subsection B of 19.15.17.9 NMAC**Instructions:** Each of the following items must be attached to the application. Please indicate, by a check mark in the box, that the documents are attached.

- ☐ Geologic and Hydrogeologic Data (only for on-site closure) - based upon the requirements of Paragraph (3) of Subsection B of 19.15.17.9
- ☐ Siting Criteria Compliance Demonstrations (only for on-site closure) - based upon the appropriate requirements of 19.15.17.10 NMAC
- ☐ Design Plan - based upon the appropriate requirements of 19.15.17.11 NMAC
- ☐ Operating and Maintenance Plan - based upon the appropriate requirements of 19.15.17.12 NMAC
- ☐ Closure Plan (Please complete Boxes 14 through 18, if applicable) - based upon the appropriate requirements of Subsection C of 19.15.17.9 NMAC and 19.15.17.13 NMAC

☐ Previously Approved Design (attach copy of design) API Number _____

☐ Previously Approved Operating and Maintenance Plan API Number _____ (Applies only to closed-loop system that use above ground steel tanks or haul-off bins and propose to implement waste removal for closure)

13.

Permanent Pits Permit Application Checklist: Subsection B of 19.15.17.9 NMAC**Instructions:** Each of the following items must be attached to the application. Please indicate, by a check mark in the box, that the documents are attached.

- ☐ Hydrogeologic Report - based upon the requirements of Paragraph (1) of Subsection B of 19.15.17.9 NMAC
- ☐ Siting Criteria Compliance Demonstrations - based upon the appropriate requirements of 19.15.17.10 NMAC
- ☐ Climatological Factors Assessment
- ☐ Certified Engineering Design Plans - based upon the appropriate requirements of 19.15.17.11 NMAC
- ☐ Dike Protection and Structural Integrity Design - based upon the appropriate requirements of 19.15.17.11 NMAC
- ☐ Leak Detection Design - based upon the appropriate requirements of 19.15.17.11 NMAC
- ☐ Liner Specifications and Compatibility Assessment - based upon the appropriate requirements of 19.15.17.11 NMAC
- ☐ Quality Control/Quality Assurance Construction and Installation Plan
- ☐ Operating and Maintenance Plan - based upon the appropriate requirements of 19.15.17.12 NMAC
- ☐ Freeboard and Overtopping Prevention Plan - based upon the appropriate requirements of 19.15.17.11 NMAC
- ☐ Nuisance or Hazardous Odors, including H₂S, Prevention Plan
- ☐ Emergency Response Plan
- ☐ Oil Field Waste Stream Characterization
- ☐ Monitoring and Inspection Plan
- ☐ Erosion Control Plan
- ☐ Closure Plan - based upon the appropriate requirements of Subsection C of 19.15.17.9 NMAC and 19.15.17.13 NMAC

14.

Proposed Closure: 19.15.17.13 NMAC**Instructions:** Please complete the applicable boxes, Boxes 14 through 18, in regards to the proposed closure plan.

Type: ☐ Drilling ☐ Workover ☐ Emergency ☐ Cavitation ☐ P&A ☐ Permanent Pit ☐ Below-grade Tank ☐ Closed-loop System
☐ Alternative

Proposed Closure Method. ☐ Waste Excavation and Removal

☐ Waste Removal (Closed-loop systems only)

☐ On-site Closure Method (Only for temporary pits and closed-loop systems)

☐ In-place Burial ☐ On-site Trench Burial

☐ Alternative Closure Method (Exceptions must be submitted to the Santa Fe Environmental Bureau for consideration)

15.

Waste Excavation and Removal Closure Plan Checklist: (19.15.17.13 NMAC) **Instructions:** Each of the following items must be attached to the closure plan. Please indicate, by a check mark in the box, that the documents are attached.

- ☐ Protocols and Procedures - based upon the appropriate requirements of 19.15.17.13 NMAC
- ☐ Confirmation Sampling Plan (if applicable) - based upon the appropriate requirements of Subsection F of 19.15.17.13 NMAC
- ☐ Disposal Facility Name and Permit Number (for liquids, drilling fluids and drill cuttings)
- ☐ Soil Backfill and Cover Design Specifications - based upon the appropriate requirements of Subsection H of 19.15.17.13 NMAC
- ☐ Re-vegetation Plan - based upon the appropriate requirements of Subsection I of 19.15.17.13 NMAC
- ☐ Site Reclamation Plan - based upon the appropriate requirements of Subsection G of 19.15.17.13 NMAC

16.

Waste Removal Closure For Closed-loop Systems That Utilize Above Ground Steel Tanks or Haul-off Bins Only: (19 15 17.13.D NMAC)

Instructions: Please identify the facility or facilities for the disposal of liquids, drilling fluids and drill cuttings. Use attachment if more than two facilities are required.

Disposal Facility Name: _____ Disposal Facility Permit Number _____

Disposal Facility Name _____ Disposal Facility Permit Number: _____

Will any of the proposed closed-loop system operations and associated activities occur on or in areas that *will not* be used for future service and operations?

☐ Yes (If yes, please provide the information below) ☐ No

Required for impacted areas which will not be used for future service and operations

☐ Soil Backfill and Cover Design Specifications - based upon the appropriate requirements of Subsection H of 19 15.17.13 NMAC

☐ Re-vegetation Plan - based upon the appropriate requirements of Subsection I of 19.15.17 13 NMAC

☐ Site Reclamation Plan - based upon the appropriate requirements of Subsection G of 19 15 17.13 NMAC

17.

Siting Criteria (regarding on-site closure methods only): 19 15 17.10 NMAC

Instructions: Each siting criteria requires a demonstration of compliance in the closure plan. Recommendations of acceptable source material are provided below. Requests regarding changes to certain siting criteria may require administrative approval from the appropriate district office or may be considered an exception which must be submitted to the Santa Fe Environmental Bureau office for consideration of approval. Justifications and/or demonstrations of equivalency are required. Please refer to 19.15.17.10 NMAC for guidance.

Ground water is less than 50 feet below the bottom of the buried waste.

- NM Office of the State Engineer - iWATERS database search; USGS; Data obtained from nearby wells

☐ Yes ☐ No

☐ NA

Ground water is between 50 and 100 feet below the bottom of the buried waste

- NM Office of the State Engineer - iWATERS database search; USGS; Data obtained from nearby wells

☐ Yes ☐ No

☐ NA

Ground water is more than 100 feet below the bottom of the buried waste

- NM Office of the State Engineer - iWATERS database search; USGS; Data obtained from nearby wells

☐ Yes ☐ No

☐ NA

Within 300 feet of a continuously flowing watercourse, or 200 feet of any other significant watercourse or lakebed, sinkhole, or playa lake (measured from the ordinary high-water mark).

- Topographic map; Visual inspection (certification) of the proposed site

☐ Yes ☐ No

Within 300 feet from a permanent residence, school, hospital, institution, or church in existence at the time of initial application.

- Visual inspection (certification) of the proposed site; Aerial photo, Satellite image

☐ Yes ☐ No

Within 500 horizontal feet of a private, domestic fresh water well or spring that less than five households use for domestic or stock watering purposes, or within 1000 horizontal feet of any other fresh water well or spring, in existence at the time of initial application

- NM Office of the State Engineer - iWATERS database, Visual inspection (certification) of the proposed site

☐ Yes ☐ No

Within incorporated municipal boundaries or within a defined municipal fresh water well field covered under a municipal ordinance adopted pursuant to NMSA 1978, Section 3-27-3, as amended

- Written confirmation or verification from the municipality, Written approval obtained from the municipality

☐ Yes ☐ No

Within 500 feet of a wetland.

- US Fish and Wildlife Wetland Identification map; Topographic map, Visual inspection (certification) of the proposed site

☐ Yes ☐ No

Within the area overlying a subsurface mine

- Written confirmation or verification or map from the NM EMNRD-Mining and Mineral Division

☐ Yes ☐ No

Within an unstable area

- Engineering measures incorporated into the design; NM Bureau of Geology & Mineral Resources; USGS; NM Geological Society, Topographic map

☐ Yes ☐ No

Within a 100-year floodplain.

- FEMA map

☐ Yes ☐ No

18.

On-Site Closure Plan Checklist: (19 15.17 13 NMAC) **Instructions:** Each of the following items must be attached to the closure plan. Please indicate, by a check mark in the box, that the documents are attached.

☐ Siting Criteria Compliance Demonstrations - based upon the appropriate requirements of 19 15.17.10 NMAC

☐ Proof of Surface Owner Notice - based upon the appropriate requirements of Subsection F of 19.15.17.13 NMAC

☐ Construction/Design Plan of Burial Trench (if applicable) based upon the appropriate requirements of 19 15 17 11 NMAC

☐ Construction/Design Plan of Temporary Pit (for in-place burial of a drying pad) - based upon the appropriate requirements of 19.15 17 11 NMAC

☐ Protocols and Procedures - based upon the appropriate requirements of 19.15 17.13 NMAC

☐ Confirmation Sampling Plan (if applicable) - based upon the appropriate requirements of Subsection F of 19.15.17 13 NMAC

☐ Waste Material Sampling Plan - based upon the appropriate requirements of Subsection F of 19 15 17 13 NMAC

☐ Disposal Facility Name and Permit Number (for liquids, drilling fluids and drill cuttings or in case on-site closure standards cannot be achieved)

☐ Soil Cover Design - based upon the appropriate requirements of Subsection H of 19 15 17 13 NMAC

☐ Re-vegetation Plan - based upon the appropriate requirements of Subsection I of 19.15 17 13 NMAC

☐ Site Reclamation Plan - based upon the appropriate requirements of Subsection G of 19 15 17.13 NMAC

19

Operator Application Certification:

I hereby certify that the information submitted with this application is true, accurate and complete to the best of my knowledge and belief

Name (Print) Janet M Bienski Title Regulatory Assistant

Signature: *Janet M Bienski* Date: 2/7/12

e-mail address: jbienski@enervest.net Telephone: 713-495-1571

20.

OCD Approval: ☐ Permit Application (including closure plan) ☒ Closure Plan (only) ☐ OCD Conditions (see attachment)

OCD Representative Signature: *Joseph D. Kelly* Approval Date: 3/13/2012

Title: Compliance Officer OCD Permit Number: _____

21.

Closure Report (required within 60 days of closure completion): Subsection K of 19 15 17.13 NMAC

Instructions: Operators are required to obtain an approved closure plan prior to implementing any closure activities and submitting the closure report. The closure report is required to be submitted to the division within 60 days of the completion of the closure activities. Please do not complete this section of the form until an approved closure plan has been obtained and the closure activities have been completed.

☒ Closure Completion Date: 11/16/10

22.

Closure Method:

☐ Waste Excavation and Removal ☐ On-Site Closure Method ☐ Alternative Closure Method ☐ Waste Removal (Closed-loop systems only)
☐ If different from approved plan, please explain

23.

Closure Report Regarding Waste Removal Closure For Closed-loop Systems That Utilize Above Ground Steel Tanks or Haul-off Bins Only:

Instructions: Please identify the facility or facilities for where the liquids, drilling fluids and drill cuttings were disposed. Use attachment if more than two facilities were utilized.

Disposal Facility Name: _____ Disposal Facility Permit Number _____

Disposal Facility Name _____ Disposal Facility Permit Number _____

Were the closed-loop system operations and associated activities performed on or in areas that *will not* be used for future service and operations?

☐ Yes (If yes, please demonstrate compliance to the items below) ☐ No

Required for impacted areas which will not be used for future service and operations

- ☐ Site Reclamation (Photo Documentation)
☐ Soil Backfilling and Cover Installation
☐ Re-vegetation Application Rates and Seeding Technique

24.

Closure Report Attachment Checklist: Instructions: Each of the following items must be attached to the closure report. Please indicate, by a check mark in the box, that the documents are attached.

- ☒ Proof of Closure Notice (surface owner and division)
☐ Proof of Deed Notice (required for on-site closure)
☒ Plot Plan (for on-site closures and temporary pits)
☒ Confirmation Sampling Analytical Results (if applicable)
☐ Waste Material Sampling Analytical Results (required for on-site closure)
☒ Disposal Facility Name and Permit Number
☐ Soil Backfilling and Cover Installation
☐ Re-vegetation Application Rates and Seeding Technique
☒ Site Reclamation (Photo Documentation)

On-site Closure Location Latitude 36.48893 Longitude 107 31687 NAD ☐ 1927 ☒ 1983

25.

Operator Closure Certification:

I hereby certify that the information and attachments submitted with this closure report is true, accurate and complete to the best of my knowledge and belief. I also certify that the closure complies with all applicable closure requirements and conditions specified in the approved closure plan

Name (Print) Janet M. Bienski Title: Regulatory Assistant

Signature: *Janet M Bienski* Date: 2/7/12

e-mail address jbienski@enervest.net Telephone: (713) 495-1571

**NEW MEXICO OIL CONSERVATION COMMISSION
WELL LOCATION AND ACERAGE DEDICATION PLAT**

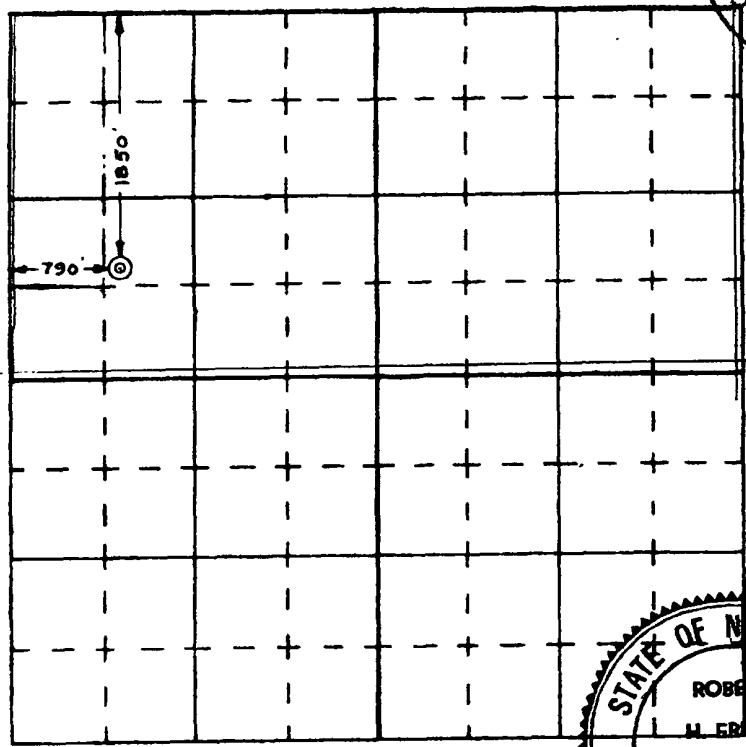
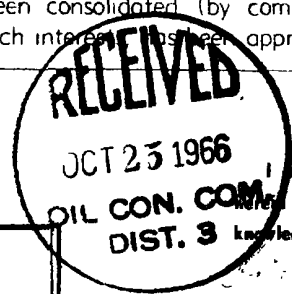
All distances must be from the outer boundaries of the Section

Operator TEANECO OIL COMPANY				Lease JICARILLA "C"		Well No 8	
Unit Letter E	Section 13	Township 26 North	Range 5 West	County Rio Arriba			
Actual Footage Location of Well 1850 feet from the North line and 790 feet from the West line Ground Level Elevation: 7202' ungraded Producing Formation: Basin Dakota Pool: Basin Dakota Dedicated Acreage: 1 1/2 320 Acres							

- 1 Outline the acreage dedicated to the subject well by colored pencil or hachure marks on the plat below
 - 2 If more than one lease is dedicated to the well, outline each and identify the ownership thereof (both as to working interest and royalty),
 - 3 If more than one lease of different ownership is dedicated to the well, have the interests of all owners been consolidated by communitization, unitization, force-pooling etc?
- () Yes () No If answer is "yes," type of consolidation

If answer is "no," list the owners and tract descriptions which have actually consolidated (Use reverse side of this form if necessary)

No allowable will be assigned to the well until all interests have been consolidated (by communitization, unitization, forced-pooling, or otherwise) or until a non standard unit, eliminating such interest has been approved by the Commission



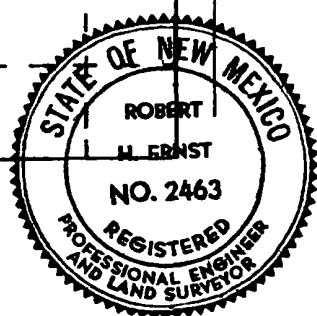
CERTIFICATION

I hereby certify that the information contained herein is true and complete to the best of my knowledge and belief.

Name **Harold C. Nichols**
 Position **Senior Production Clerk**
 Company **Teaneco Oil Company**
 Date **October 19, 1966**

I hereby certify that the well location shown on this plat was plotted from field notes of actual surveys made by me or under my supervision, and that the same is true and correct to the best of my knowledge and belief.

Date Surveyed **2 September 1966**
 Registered Professional Engineer and/or Land Surveyor
Robert H. Ernst
Robert H. Ernst
N. Mex. PE & LS No. 2463
 Certificate No _____



SENDER: COMPLETE THIS SECTION

- ☒ Complete Items 1, 2, and 3. Also complete Item 4 if Restricted Delivery is desired.
☒ Print your name and address on the reverse so that we can return the card to you.
☒ Attach this card to the back of the mailpiece, or on the front if space permits.

1. Article Addressed to:

Mr. Manuel Myore
 Bureau of Indian Affairs
 Jicarilla Agency
 Branch of Real Property
 PO Box 167
 Dulce, New Mexico 87528

2. Article Number

(Transfer from service label)

7009 0080 0000 0442 7441

PS Form 3811, February 2004

Domestic Return Receipt

102595-02-M-1540

COMPLETE THIS SECTION ON DELIVERY

A. Signature

X *Kenny Harrison*☐ Agent☐ Addressee

B. Received by (Printed Name)

Kenny Harrison

C. Date of Delivery

8-18-10

D. Is delivery address different from item 1? ☐ Yes

If YES, enter delivery address below:

☒ No

JMK

JIC APACHE 102# 8 VENT JK

3. Service Type

☒ Certified Mail☐ Express Mail☐ Registered☒ Return Receipt for Merchandise☐ Insured Mail☐ C.O.D.

4. Restricted Delivery? (Extra Fee)

☐ Yes

UNITED STATES POSTAL SERVICE

ALBUQUERQUE, NM 87101

19 AUG 2010 PM 3:11

* Sender: Please print your name, address, and ZIP+4 in this box *

EnerVest Management Partners, LTD.
 1001 Fannin Street, Suite 800
 Houston, Texas 77002-6707

Ronnie Garry

AUG 23 2010

USPS

Postage & Fees Paid
 USPS
 Permit No. G-10
 AUG 19 2010

Lease name: Jicarilla C No. 008
API No: 30-039-08148

On November 16, 2010, we removed below-grade tank.

Inspected bottom of below-grade tank and ground under and found no evidence of leaks.

Sent samples to Cardinal Lab for testing. Samples returned within guidelines.

Backfill location.

District I
1525 N French Dr, Hobbs, NM 88240
District II
1301 W Grand Avenue, Artesia, NM 88210
District III
1000 Rio Brazos Road, Aztec, NM 87410
District IV
1220 S St Francis Dr, Santa Fe, NM 87505

State of New Mexico
Energy Minerals and Natural Resources

Oil Conservation Division
1220 South St. Francis Dr.
Santa Fe, NM 87505

Form C-141
Revised October 10, 2003

Submit 2 Copies to appropriate
District Office in accordance
with Rule 116 on back
side of form

Release Notification and Corrective Action

OPERATOR

☒ Initial Report ☐ Final Report

Name of Company	EnerVest Operating, LLC	Contact	Ronnie L. Young
Address	1001 Fannin St. Ste. 800 Houston, Tx. 77002	Telephone No.	713-495-6530
Facility Name	Jicarilla C #8 Tk #1	Facility Type	Gas Well - Below Grade Tank
Surface Owner	Jicarilla Indian Nation	Mineral Owner	
		Lease No.	30-039-08148

LOCATION OF RELEASE

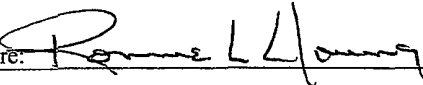
Unit Letter	Section	Township	Range	Feet from the	North/South Line	Feet from the	East/West Line	County
E	13	26 N	05 W	1850	North	790	West	Rio Arriba

Latitude 36.293261 Longitude -107.190352

NATURE OF RELEASE

Type of Release	Volume of Release	Volume Recovered
Source of Release	Date and Hour of Occurrence	Date and Hour of Discovery
Was Immediate Notice Given? <input type="checkbox"/> Yes <input type="checkbox"/> No <input type="checkbox"/> Not Required	If YES, To Whom?	
By Whom?	Date and Hour	
Was a Watercourse Reached? <input type="checkbox"/> Yes <input type="checkbox"/> No	If YES, Volume Impacting the Watercourse.	
If a Watercourse was Impacted, Describe Fully.*		
Describe Cause of Problem and Remedial Action Taken.*		
No Release - Closure of Below-Grade Tank - - - Required results of 5-spot soil sample attached		
Describe Area Affected and Cleanup Action Taken.*		

I hereby certify that the information given above is true and complete to the best of my knowledge and understand that pursuant to NMOCD rules and regulations all operators are required to report and/or file certain release notifications and perform corrective actions for releases which may endanger public health or the environment. The acceptance of a C-141 report by the NMOCD marked as "Final Report" does not relieve the operator of liability should their operations have failed to adequately investigate and remediate contamination that pose a threat to ground water, surface water, human health or the environment. In addition, NMOCD acceptance of a C-141 report does not relieve the operator of responsibility for compliance with any other federal, state, or local laws and/or regulations.

Signature: 	OIL CONSERVATION DIVISION	
Printed Name: Ronnie L. Young	Approved by District Supervisor:	
Title: Regulatory Manager	Approval Date:	Expiration Date:
E-mail Address: ryoung@enervest.net	Conditions of Approval:	Attached <input type="checkbox"/>
Date: 5.6.11 Phone: 713-495-6530		

* Attach Additional Sheets If Necessary

Analytical Results For:

ENERVEST
LEE GARDNER
2700 FARMINGTON BLD K SUITE #1
FARMINGTON NM, 87401
Fax To: NOT GIVEN

Received: 11/18/2010
Reported: 11/24/2010
Project Name: TAPICITO PIT
Project Number: NONE GIVEN
Project Location: NONE GIVEN

Sampling Date: 11/16/2010
Sampling Type: Soil
Sampling Condition: Cool & Intact
Sample Received By: Jodi Henson

Sample ID: C-8 #1 (H021331-04)

BTEX 8260B		mg/kg		Analyzed By: CMS					
Analyte	Result	Reporting Limit	Analyzed	Method Blank	BS	% Recovery	True Value QC	RPD	Qualifier
Benzene*	<0.100	0.100	11/23/2010	ND	2.23	112	2.00	1.45	
Toluene*	<0.100	0.100	11/23/2010	ND	2.40	120	2.00	1.45	
Ethylbenzene*	<0.100	0.100	11/23/2010	ND	2.45	123	2.00	5.00	
Total Xylenes*	<0.300	0.300	11/23/2010	ND	7.73	129	6.00	4.55	

BTEx 8260B		ug/kg	Analyzed By: CMS						
Analyte	Result	Reporting Limit	Analyzed	Method Blank	BS	% Recovery	True Value QC	RPD	Qualifier
Surrogate: Dibromofluoromethane	89.7 %	80-120							
Surrogate: Toluene-d8	88.3 %	80-120							
Surrogate: 4-Bromofluorobenzene	96.9 %	80-120							

Chloride, SM4500Cl-B		mg/kg	Analyzed By: HM						
Analyte	Result	Reporting Limit	Analyzed	Method Blank	BS	% Recovery	True Value QC	RPD	Qualifier
Chloride	<16.0	16.0	11/20/2010	ND	400	100	400	3.92	

TPH 8015M		mg/kg	Analyzed By: AB						
Analyte	Result	Reporting Limit	Analyzed	Method Blank	BS	% Recovery	True Value QC	RPD	Qualifier
GRO C6-C10	<10.0	10.0	11/20/2010	ND	187	93.6	200	17.3	
DRO >C10-C28	<10.0	10.0	11/20/2010	ND	152	75.8	200	1.12	

Surrogate 1-Chlorooctane	94.5 %	70-130
Surrogate 1-Chlorooctadecane	93.7 %	70-130

Cardinal Laboratories

*=Accredited Analyte

PLEASE NOTE: Liability and Damages. Cardinal's liability and client's exclusive remedy for any claim arising, whether based in contract or tort, shall be limited to the amount paid by client for analyses. All claims, including those for negligence and any other cause whatsoever shall be deemed waived unless made in writing and received by Cardinal within thirty (30) days after completion of the applicable service. In no event shall Cardinal be liable for incidental or consequential damages, including, without limitation, business interruptions, loss of use, or loss of profits incurred by client, its subsidiaries, affiliates or successors arising out of or related to the performance of the services hereunder by Cardinal, regardless of whether such claim is based upon any of the above stated reasons or otherwise. Results relate only to the samples identified above. This report shall not be reproduced except in full with written approval of Cardinal Laboratories.



Celey D. Keene, Lab Director/Quality Manager

Notes and Definitions

ND	Analyte NOT DETECTED at or above the reporting limit
RPD	Relative Percent Difference
**	Samples not received at proper temperature of 6°C or below.
***	Insufficient time to reach temperature.
-	Chloride by SM4500Cl-B does not require samples be received at or below 6°C Samples reported on an as received basis (wet) unless otherwise noted on report

Cardinal Laboratories

* = Accredited Analyte

PLEASE NOTE: Liability and Damages. Cardinal's liability and client's exclusive remedy for any claim arising, whether based in contract or tort, shall be limited to the amount paid by client for analyses. All claims, including those for negligence and any other cause whatsoever shall be deemed waived unless made in writing and received by Cardinal within thirty (30) days after completion of the applicable service. In no event shall Cardinal be liable for incidental or consequential damages, including, without limitation, business interruptions, loss of use, or loss of profits incurred by client, its subsidiaries, affiliates or successors arising out of or related to the performance of the services hereunder by Cardinal, regardless of whether such claim is based upon any of the above stated reasons or otherwise. Results relate only to the samples identified above. This report shall not be reproduced except in full with written approval of Cardinal Laboratories.



Celey D. Keene, Lab Director/Quality Manager



CHAIN OF CUSTODY RECORD

Page ____ of ____

Client: EMERQUEST OPERATING

Contact: LEE HARRISON

Address: 2700 FAIRMINGTON

BLOCK #1 FAIRMINGTON

Phone Number: 505 325-0312

FAX Number: _____

NOTES:

- 1) Ensure proper container packaging.
- 2) Ship samples promptly following collection.
- 3) Designate Sample Reject Disposition

PO# _____

Project Name: TARLETON RR

Table 1. - Matrix Type

- 1 = Surface Water, 2 = Ground Water
3 = Soil/Sediment, 4 = Rinsate, 5 = Oil
6 = Waste, 7 = Other (Specify) _____

FOR GAL USE ONLY

GAL JOB # _____

Samplers Signature: Lee Harrison

Lab Name: Green Analytical Laboratories (970) 247-4220 FAX (970) 247-4227												Analyses Required								Comments				
Address: 75 Suttle Street, Durango, CO 81303													DREX	TPH	CHLORIDES									
Sample ID	Date	Time	Collected by: (Init.)	Matrix Type From Table 1	No. of Containers	Sample Filtered ? Y/N	Unpreserved (Ice Only)	HNO3	HCL	H2SO4	NAOH	Other (Specify)												
H21331-																								
1-1516E	11/16/10	9:43	LC	3	1	N	X							X	X	X						WET CLAY		
2-151-2E #1	11/16/10	11:30	LC	3	1	N	X							X	X	X								
3-151-2E #2	11/16/10	12:15	LC	3	1	N	X							X	X	X								
4-C-2 #1	11/16/10	1:30	LC	3	1	N	X							X	X	X								
5-C-2 #2	11/16/10	1:45	LC	3	1	N	X							X	X	X								
6.																								
7.																								
8.																								
9.																								
10.																								
Relinquished by: <u>Lee Harrison</u>			Date: <u>11/16/10</u>			Time: <u>5:50</u>			Received by: <u>Mike Clark</u>			Date: <u>11/15/10</u>			Time: <u>1:56</u>									
Relinquished by: _____			Date: _____			Time: _____			Received by: <u>John Benson</u>			Date: <u>11/18/10</u>			Time: <u>9:35</u>									

* Sample Reject: [] Return [X] Dispose [] Store (30 Days)

6°C #26

Analytical Results For:

ENERVEST
LEE GARDNER
2700 FARMINGTON BLD K SUITE #1
FARMINGTON NM, 87401
Fax To: NOT GIVEN

Received: 11/18/2010
Reported: 11/24/2010
Project Name: TAPICITO PIT
Project Number: NONE GIVEN
Project Location: NONE GIVEN

Sampling Date: 11/16/2010
Sampling Type: Soil
Sampling Condition: Cool & Intact
Sample Received By: Jodi Henson

Sample ID: C-8 #1 (H021331-04)

BTX 8260B		mg/kg		Analyzed By: CMS					
Analyte	Result	Reporting Limit	Analyzed	Method Blank	BS	% Recovery	True Value QC	RPD	Qualifier
Benzene*	<0.100	0.100	11/23/2010	ND	2.23	112	2.00	1.45	
Toluene*	<0.100	0.100	11/23/2010	ND	2.40	120	2.00	1.45	
Ethylbenzene*	<0.100	0.100	11/23/2010	ND	2.45	123	2.00	5.00	
Total Xylenes*	<0.300	0.300	11/23/2010	ND	7.73	129	6.00	4.55	

BTX 8260B		ug/kg		Analyzed By: CMS					
Analyte	Result	Reporting Limit	Analyzed	Method Blank	BS	% Recovery	True Value QC	RPD	Qualifier
Surrogate Dibromofluoromethane	89.7 %	80-120							
Surrogate Toluene-d8	88.3 %	80-120							
Surrogate 4-Bromofluorobenzene	96.9 %	80-120							

Chloride, SM4500Cl-B		mg/kg		Analyzed By: HM					
Analyte	Result	Reporting Limit	Analyzed	Method Blank	BS	% Recovery	True Value QC	RPD	Qualifier
Chloride	<16.0	16.0	11/20/2010	ND	400	100	400	3.92	

TPH 8015M		mg/kg		Analyzed By: AB					
Analyte	Result	Reporting Limit	Analyzed	Method Blank	BS	% Recovery	True Value QC	RPD	Qualifier
GRO C6-C10	<10.0	10.0	11/20/2010	ND	187	93.6	200	17.3	
DRO >C10-C28	<10.0	10.0	11/20/2010	ND	152	75.8	200	1.12	
Surrogate 1-Chlorooctane	94.5 %	70-130							
Surrogate 1-Chlorooctadecane	93.7 %	70-130							

Cardinal Laboratories

*=Accredited Analyte

PLEASE NOTE: Liability and Damages: Cardinal's liability and client's exclusive remedy for any claim arising, whether based in contract or tort, shall be limited to the amount paid by client for analyses. All claims, including those for negligence and any other cause whatsoever shall be deemed waived unless made in writing and received by Cardinal within thirty (30) days after completion of the applicable service. In no event shall Cardinal be liable for incidental or consequential damages, including, without limitation, business interruptions, loss of use, or loss of profits incurred by client, its subsidiaries, affiliates or successors arising out of or related to the performance of the services hereunder by Cardinal, regardless of whether such claim is based upon any of the above stated reasons or otherwise. Results relate only to the samples identified above. This report shall not be reproduced except in full with written approval of Cardinal Laboratories.



Celey D. Keene, Lab Director/Quality Manager



CHAIN OF CUSTODY RECORD

Page ____ of ____

Client: EMERQUEST OPERATING
 Contact: LEE GARDNER
 Address: 2709 FARMINGTON
BLOCK #1 FARMINGTON
 Phone Number: 505 325-0312
 FAX Number: _____

NOTES:
 1) Ensure proper container packaging
 2) Ship samples promptly following collection.
 3) Designate Sample Reject Disposition.
 PO# _____
 Project Name: TARLETON PR

Table 1. - Matrix Type
 1 = Surface Water, 2 = Ground Water
 3 = Soil/Sediment, 4 = Rinsate, 5 = Oil
 6 = Waste, 7 = Other (Specify) _____

FOR GAL USE ONLY
 GAL JOB # _____

Samplers Signature: Lee Gardner

Lab Name: Green Analytical Laboratories (970) 247-4220 FAX (970) 247-4227												Analyses Required										Comments	
Address: 75 Suttle Street, Durango, CO 81303																							
Sample ID	Collection		Collected by: (Init.)	Matrix Type From Table 1	No. of Containers	Sample Filtered ? Y/N	Unpreserved (Ice Only)	Preservative(s)					Other (Specify)										
	Date	Time						LiNO3	LiCl	H2SO4	NaOH												
H21331-																							
1- 151GE	11/16/10	9:40	LG	3	1	A	X																
2- 151-2E #1	11/16/10	11:30	LG	3	1	A	X																
3- 151-2E #2	11/16/10	12:13	LG	3	1	A	X																
4- C-2 #1	11/16/10	1:30	LG	3	1	A	X																
5- C-2 #2	11/16/10	1:45	LG	3	1	A	X																
6.																							
7.																							
8.																							
9.																							
10.																							
Relinquished by: <u>Lee Gardner</u>			Date: <u>11/15/10</u>			Time: <u>15:50</u>			Received by: <u>John Benson</u>			Date: <u>11/15/10</u>			Time: <u>15:56</u>								
Relinquished by: _____			Date: _____			Time: _____			Received by: _____			Date: <u>11/18/10</u>			Time: <u>9:35</u>								

* Sample Reject: [] Return [X] Dispose [] Store (30 Days)

60 #26



November 24, 2010

LEE GARDNER

ENERVEST

2700 FARMINGTON BLD K SUITE #1

FARMINGTON, NM 87401

RE: TAPICITO PIT

Enclosed are the results of analyses for samples received by the laboratory on 11/18/10 9:35.

Cardinal Laboratories is accredited through Texas NELAP for:

Method SW-846 8021 Benzene, Toluene, Ethyl Benzene, and Total Xylenes

Method SW-846 8260 Benzene, Toluene, Ethyl Benzene, and Total Xylenes

Method TX 1005 Total Petroleum Hydrocarbons

Certificate number T104704398-08-TX. Accreditation applies to solid and chemical materials and non-potable water matrices.

Cardinal Laboratories is accredited through the State of Colorado Department of Public Health and Environment for:

Method EPA 552.2 Haloacetic Acids (HAA-5)

Method EPA 524.2 Total Trihalomethanes (TTHM)

Method EPA 524.4 Regulated VOCs (V2, V3)

Accreditation applies to public drinking water matrices.

This report meets NELAP requirements and is made up of a cover page, analytical results, and a copy of the original chain-of-custody. If you have any questions concerning this report, please feel free to contact me.

Sincerely,

Celey D. Keene

Lab Director/Quality Manager

Notes and Definitions

ND	Analyte NOT DETECTED at or above the reporting limit
RPD	Relative Percent Difference
**	Samples not received at proper temperature of 6°C or below.
***	Insufficient time to reach temperature
-	Chloride by SM4500Cl-B does not require samples be received at or below 6°C Samples reported on an as received basis (wet) unless otherwise noted on report

Cardinal Laboratories

*=Accredited Analyte

PLEASE NOTE: Liability and Damages. Cardinal's liability and client's exclusive remedy for any claim arising, whether based in contract or tort, shall be limited to the amount paid by client for analyses. All claims, including those for negligence and any other cause whatsoever shall be deemed waived unless made in writing and received by Cardinal within thirty (30) days after completion of the applicable service. In no event shall Cardinal be liable for incidental or consequential damages, including, without limitation, business interruptions, loss of use, or loss of profits incurred by client, its subsidiaries, affiliates or successors arising out of or related to the performance of the services hereunder by Cardinal, regardless of whether such claim is based upon any of the above stated reasons or otherwise. Results relate only to the samples identified above. This report shall not be reproduced except in full with written approval of Cardinal Laboratories.



Celey D. Keene, Lab Director/Quality Manager

Analytical Results For:

ENERVEST
LEE GARDNER
2700 FARMINGTON BLD K SUITE #1
FARMINGTON NM, 87401
Fax To. NOT GIVEN

Received: 11/18/2010
Reported: 11/24/2010
Project Name: TAPICITO PIT
Project Number: NONE GIVEN
Project Location: NONE GIVEN

Sampling Date: 11/16/2010
Sampling Type: Soil
Sampling Condition: Cool & Intact
Sample Received By: Jodi Henson

Sample ID: C-8 #1 (H021331-04)

BTEX 8260B			mg/kg		Analyzed By: CMS				
Analyte	Result	Reporting Limit	Analyzed	Method Blank	BS	% Recovery	True Value QC	RPD	Qualifier
Benzene*	<0.100	0.100	11/23/2010	ND	2.23	112	2.00	1.45	
Toluene*	<0.100	0.100	11/23/2010	ND	2.40	120	2.00	1.45	
Ethylbenzene*	<0.100	0.100	11/23/2010	ND	2.45	123	2.00	5.00	
Total Xylenes*	<0.300	0.300	11/23/2010	ND	7.73	129	6.00	4.55	

BTEX 8260B			ug/kg		Analyzed By: CMS				
Analyte	Result	Reporting Limit	Analyzed	Method Blank	BS	% Recovery	True Value QC	RPD	Qualifier
Surrogate Dibromofluoromethane	89.7 %	80-120							
Surrogate Toluene-d8	88.3 %	80-120							
Surrogate 4-Bromofluorobenzene	96.9 %	80-120							

Chloride, SM4500Cl-B			mg/kg		Analyzed By: HM				
Analyte	Result	Reporting Limit	Analyzed	Method Blank	BS	% Recovery	True Value QC	RPD	Qualifier
Chloride	<16.0	16.0	11/20/2010	ND	400	100	400	3.92	

TPH 8015M			mg/kg		Analyzed By: AB				
Analyte	Result	Reporting Limit	Analyzed	Method Blank	BS	% Recovery	True Value QC	RPD	Qualifier
GRO C6-C10	<10.0	10.0	11/20/2010	ND	187	93.6	200	17.3	
DRO >C10-C28	<10.0	10.0	11/20/2010	ND	152	75.8	200	1.12	
Surrogate 1-Chlorooctane	94.5 %	70-130							
Surrogate 1-Chlorooctadecane	93.7 %	70-130							

Cardinal Laboratories

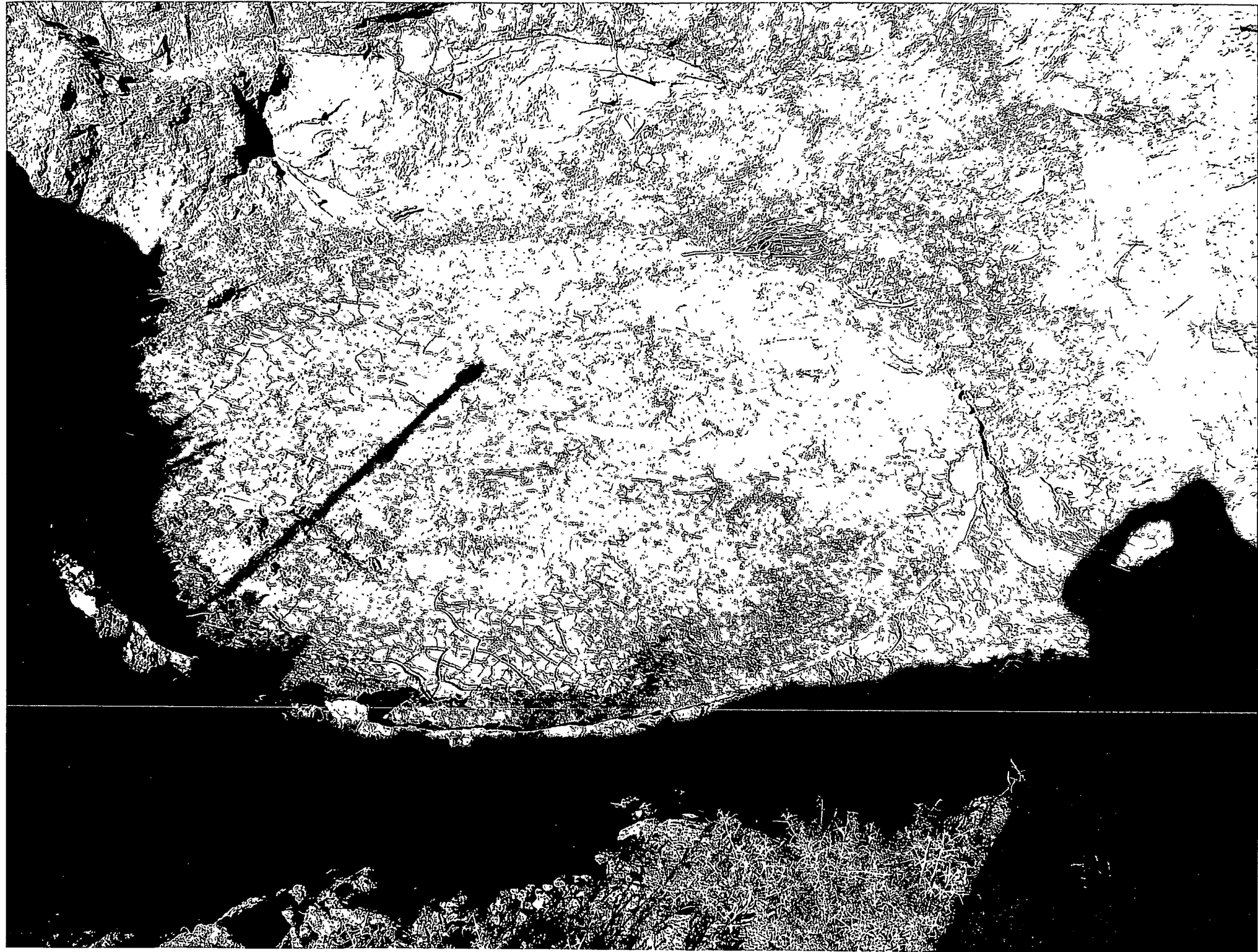
*=Accredited Analyte

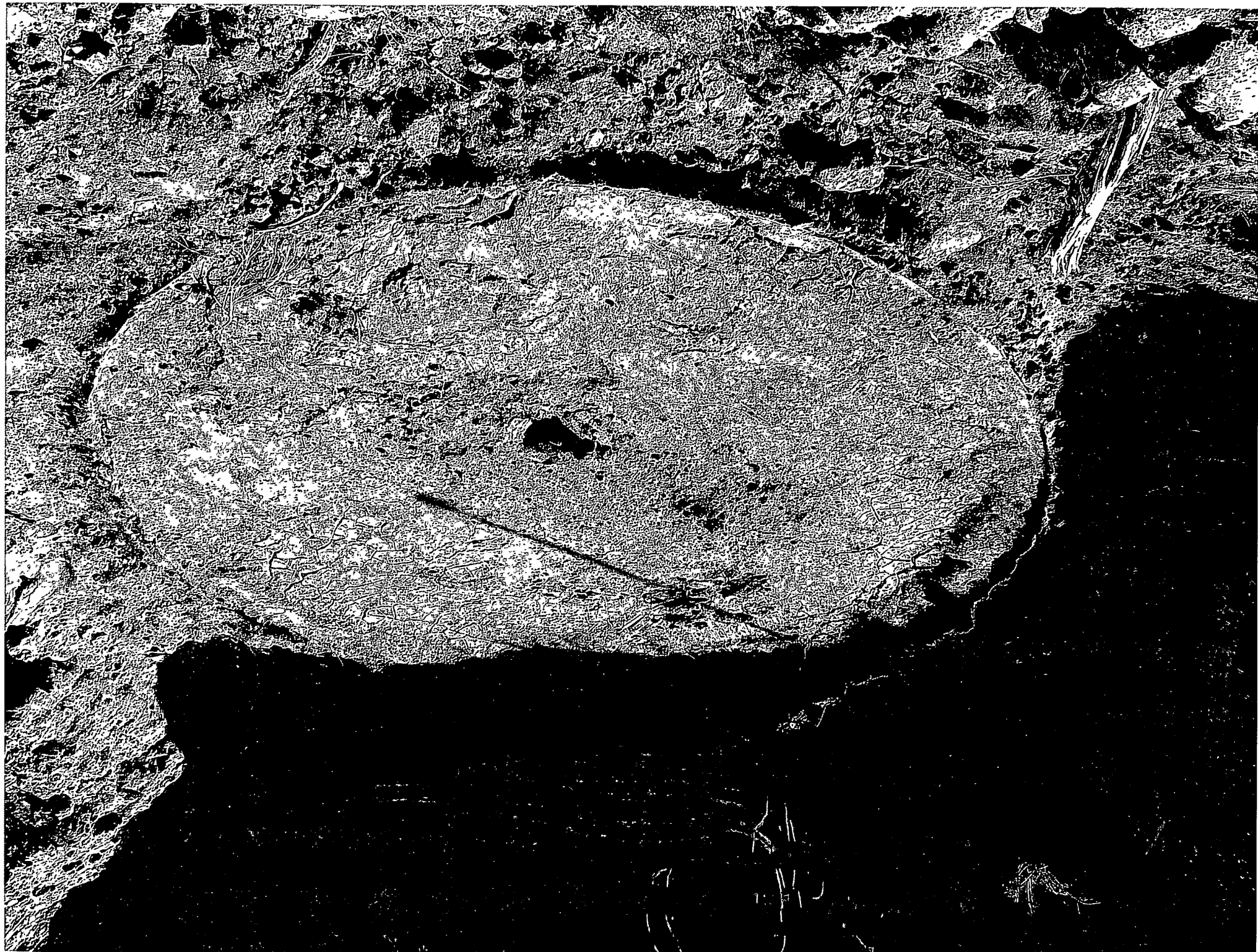
PLEASE NOTE: Liability and Damages. Cardinal's liability and client's exclusive remedy for any claim arising, whether based in contract or tort, shall be limited to the amount paid by client for analyses. All claims, including those for negligence and any other cause whatsoever shall be deemed waived unless made in writing and received by Cardinal within thirty (30) days after completion of the applicable service. In no event shall Cardinal be liable for incidental or consequential damages, including, without limitation, business interruptions, loss of use, or loss of profits incurred by client, its subsidiaries, affiliates or successors arising out of or related to the performance of the services hereunder by Cardinal, regardless of whether such claim is based upon any of the above stated reasons or otherwise. Results relate only to the samples identified above. This report shall not be reproduced except in full with written approval of Cardinal Laboratories.



Celey D. Keene, Lab Director/Quality Manager

C 8
PIT #1







ROUND MARE '12
OIL CONS. DIV.
DIST. 3

VIA FEDERAL EXPRESS 7981 2464 3155

March 2, 2012

Jonathan D. Kelly
NMOCD
1000 Rio Brazos Drive
Aztec, NM 87410

Re: BGT Missing Data

Dear Jonathan:

Per your email of February 15, 2012, enclosed please find the following:

- 1) Revised Detailed Closure reports listing the Soil Sample results for the following wells:

Jicarilla C8, tanks 1 and 2	30-039-08148
Jicarilla C 5M	30-039-22315
Jicarilla Apache Tribal 151 6E	30-039-23165
Jicarilla C4E	30-039-22298
Jicarilla Apache Tribal 151 1E	30-039-23171
Jicarilla Apache Tribal 151 2E	30-039-23324

- 2) C144 Closure for Jicarilla C8, tank 2;
- 3) Due to crew availability and the opportunity to beat the weather, we failed to notify your office of the closure of tanks for JAT 151 6E and Jicarilla C8. It was an oversight on our part and steps have been taken so this does not happen again.
- 4) CLEZ amended closure forms for Jicarilla A 8M, Jic B #2M, Jic A #8N, Jic C #2N, Jicarilla Apache 102 #11 M, and Jicarilla C 3M. Originals were denied. C144 closures for these wells will be submitted early next week.

Please note that completion photos (backfill for Jicarilla C 8 and Jicarilla Apache Tribal 151 6E) will be submitted once weather conditions improve.

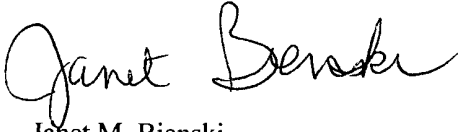
Mr. Jonathan Kelly

March 2, 2012

Page 2

Should you have any questions, please contact me at 713-495-1571. Thank you.

Sincerely,

A handwritten signature in cursive script that reads "Janet Bienski". The signature is fluid and written in black ink.

Janet M. Bienski
Regulatory Assistant
EnerVest Operating, LLC

EnerVest Operating, LLC

Below-Grade Tank Closure Report

RCVD MAR 13 '12

OIL CONS. DIV.

Lease & Well: Jicarilla C 8 (tank 1)

DIST. 3

API No: 30-039-08148

In accordance with Rule 19.15.17.13 NMAC, the following information describes the closure of the below-grade tank on the above well. All proper documentation regarding closure activities is being included with the C-144, closure report. This below-grade tank was constructed prior to June 16, 2008, the effective date of this rule.

The surface owner shall be notified of the closure of this below-grade tank.

Manuel Myore/Bureau of Indian Affairs was notified of the closure of this below-grade tank via U. S. Mail Registered Mail with a Return Receipt Requested on September 15, 2010.

At least a 72 hour notice will be given to the appropriate division district office, via U. S. Mail or electronic e-mail, prior to the closure of any below-grade tank.

**Aztec OCD Office was not notified due to hurriedness because of crew availability.
This was an oversight and steps have been taken that this does not happen again.**

All free standing liquids will be removed prior to any other activity concerning the closure of the below-grade tank. All liquids were disposed of in a division-approved facility in a manner that the appropriate division district office approves.

All recovered liquids were disposed of at TNT Land Farm/Permit #NM-01-008. This below-grade tank was steam-cleaned and sold for private use.

Upon removal of the below-grade tank from its containment area, the surface directly below this tank will be inspected for any visible signs of leakage. If leakage is detected, a grab sample will be taken from that area. Also, a five point composite sample will be taken from where the tank was sitting. All samples will be analyzed for the following:

Components	Test Method	Limits (mg/Kg)	Sample Results
Benzene	EPA SW-846 8021B or 8260B	0.2	.100
BTEX	EPA SW-846 8021B or 8260B	50	.300
TPH	EPA SW-846 418.1	100	10
Chlorides	EPA 300.1	250 or background, whichever is greater	16

The results of all sampling shall be reported to the division on Form C-141.

Upon removal of this below-grade tank, there was no visible evidence of any leakage. a five point composite sample was taken from where the tank was sitting. The samples were sent in for analysis and the results reported to the OCD Aztec Office on C-141 on 9/29/11. The results of all testing were within tolerance levels as established by the OCD.

Upon sampling has confirmed no leaks were evidence, the area was back filled and surrounding area restored. These below-grade tanks are on the approved pad sites and no re-seeding was performed.

Photographic evidence of this work was taken and will be submitted with our completed C-144 for the closure of this below-grade tank.

District I
1625 N. French Dr., Hobbs, NM 88240
District II
1301 W. Grand Avenue, Artesia, NM 88210
District III
1000 Rio Brazos Road, Aztec, NM 87410
District IV
1220 S. St. Francis Dr., Santa Fe, NM 87505

State of New Mexico
Energy Minerals and Natural Resources

Oil Conservation Division
1220 South St. Francis Dr.
Santa Fe, NM 87505

Form C-141
Revised October 10, 2003

Submit 2 Copies to appropriate
District Office in accordance
with Rule 116 on back
side of form

Release Notification and Corrective Action

OPERATOR

☒ Initial Report ☐ Final Report

Name of Company	EnerVest Operating, LLC	Contact	Ronnie L. Young
Address	1001 Fannin St. Ste. 800 Houston, Tx. 77002	Telephone No.	713-495-6530
Facility Name	Jicarilla C #8 Tk #1	Facility Type	Gas Well - Below Grade Tank
Surface Owner	Jicarilla Indian Nation	Mineral Owner	
		Lease No.	30-039-08148

LOCATION OF RELEASE

Unit Letter	Section	Township	Range	Feet from the	North/South Line	Feet from the	East/West Line	County
E	13	26 N	05 W	1850	North	790	West	Rio Arriba

Latitude 36.293261 Longitude -107.190352

NATURE OF RELEASE

Type of Release	Volume of Release	Volume Recovered
Source of Release	Date and Hour of Occurrence	Date and Hour of Discovery
Was Immediate Notice Given? <input type="checkbox"/> Yes <input type="checkbox"/> No <input type="checkbox"/> Not Required	If YES, To Whom?	
By Whom?	Date and Hour	
Was a Watercourse Reached? <input type="checkbox"/> Yes <input type="checkbox"/> No	If YES, Volume Impacting the Watercourse.	

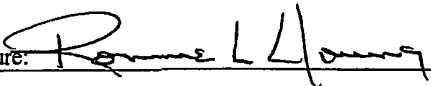
If a Watercourse was Impacted, Describe Fully.*

Describe Cause of Problem and Remedial Action Taken.*

No Release - Closure of Below-Grade Tank - - - Required results of 5-spot soil sample attached

Describe Area Affected and Cleanup Action Taken.*

I hereby certify that the information given above is true and complete to the best of my knowledge and understand that pursuant to NMOCD rules and regulations all operators are required to report and/or file certain release notifications and perform corrective actions for releases which may endanger public health or the environment. The acceptance of a C-141 report by the NMOCD marked as "Final Report" does not relieve the operator of liability should their operations have failed to adequately investigate and remediate contamination that pose a threat to ground water, surface water, human health or the environment. In addition, NMOCD acceptance of a C-141 report does not relieve the operator of responsibility for compliance with any other federal, state, or local laws and/or regulations.

Signature: 		OIL CONSERVATION DIVISION	
Printed Name: Ronnie L. Young		Approved by District Supervisor:	
Title: Regulatory Manager	Approval Date:	Expiration Date:	
E-mail Address: ryoung@enervest.net	Conditions of Approval:		Attached <input type="checkbox"/>
Date: 5.6.11	Phone: 713-495-6530		

* Attach Additional Sheets If Necessary

Analytical Results For:

ENERVEST
LEE GARDNER
2700 FARMINGTON BLD K SUITE #1
FARMINGTON NM, 87401
Fax To: NOT GIVEN

Received: 11/18/2010
Reported: 11/24/2010
Project Name: TAPICITO PIT
Project Number: NONE GIVEN
Project Location: NONE GIVEN

Sampling Date: 11/16/2010
Sampling Type: Soil
Sampling Condition: Cool & Intact
Sample Received By: Jodi Henson

Sample ID: C-8 #1 (H021331-04)
BTEX 8260B

mg/kg

Analyzed By: CMS

Analyte	Result	Reporting Limit	Analyzed	Method Blank	BS	% Recovery	True Value QC	RPD	Qualifier
Benzene*	<0.100	0.100	11/23/2010	ND	2.23	112	2.00	1.45	
Toluene*	<0.100	0.100	11/23/2010	ND	2.40	120	2.00	1.45	
Ethylbenzene*	<0.100	0.100	11/23/2010	ND	2.45	123	2.00	5.00	
Total Xylenes*	<0.300	0.300	11/23/2010	ND	7.73	129	6.00	4.55	

BTEX 8260B

ug/kg

Analyzed By: CMS

Analyte	Result	Reporting Limit	Analyzed	Method Blank	BS	% Recovery	True Value QC	RPD	Qualifier
Surrogate: Dibromofluoromethane	89.7 %	80-120							
Surrogate: Toluene-d8	88.3 %	80-120							
Surrogate: 4-Bromofluorobenzene	96.9 %	80-120							

Chloride, SM4500Cl-B

mg/kg

Analyzed By: HM

Analyte	Result	Reporting Limit	Analyzed	Method Blank	BS	% Recovery	True Value QC	RPD	Qualifier
Chloride	<16.0	16.0	11/20/2010	ND	400	100	400	3.92	

TPH 8015M

mg/kg

Analyzed By: AB

Analyte	Result	Reporting Limit	Analyzed	Method Blank	BS	% Recovery	True Value QC	RPD	Qualifier
GRO C6-C10	<10.0	10.0	11/20/2010	ND	187	93.6	200	17.3	
DRO >C10-C28	<10.0	10.0	11/20/2010	ND	152	75.8	200	1.12	
Surrogate 1-Chlorooctane	94.5 %	70-130							
Surrogate 1-Chlorooctadecane	93.7 %	70-130							

Cardinal Laboratories

*==Accredited Analyte

PLEASE NOTE: Liability and Damages. Cardinal's liability and client's exclusive remedy for any claim arising, whether based in contract or tort, shall be limited to the amount paid by client for analyses. All claims, including those for negligence and any other cause whatsoever shall be deemed waived unless made in writing and received by Cardinal within thirty (30) days after completion of the applicable service. In no event shall Cardinal be liable for incidental or consequential damages, including, without limitation, business interruptions, loss of use, or loss of profits incurred by client, its subsidiaries, affiliates or successors arising out of or related to the performance of the services hereunder by Cardinal, regardless of whether such claim is based upon any of the above stated reasons or otherwise. Results relate only to the samples identified above. This report shall not be reproduced except in full with written approval of Cardinal Laboratories.



Celey D. Keene, Lab Director/Quality Manager

Analytical Results For:

 ENERVEST
 LEE GARDNER
 2700 FARMINGTON BLD K SUITE #1
 FARMINGTON NM, 87401
 Fax To: NOT GIVEN

 Received: 11/18/2010
 Reported: 11/24/2010
 Project Name: TAPICITO PIT
 Project Number: NONE GIVEN
 Project Location: NONE GIVEN

 Sampling Date: 11/16/2010
 Sampling Type: Soil
 Sampling Condition: Cool & Intact
 Sample Received By: Jodi Henson

Sample ID: C-8 #2 (H021331-05)

BTX 8260B		mg/kg		Analyzed By: CMS					
Analyte	Result	Reporting Limit	Analyzed	Method Blank	BS	% Recovery	True Value QC	RPD	Qualifier
Benzene*	<0.100	0.100	11/23/2010	ND	2.23	112	2.00	1.45	
Toluene*	<0.100	0.100	11/23/2010	ND	2.40	120	2.00	1.45	
Ethylbenzene*	<0.100	0.100	11/23/2010	ND	2.45	123	2.00	5.00	
Total Xylenes*	<0.300	0.300	11/23/2010	ND	7.73	129	6.00	4.55	

BTX 8260B		ug/kg		Analyzed By: CMS					
Analyte	Result	Reporting Limit	Analyzed	Method Blank	BS	% Recovery	True Value QC	RPD	Qualifier
Surrogate Dibromofluoromethane	96.0 %	80-120							
Surrogate Toluene-d8	90.7 %	80-120							
Surrogate 4-Bromofluorobenzene	96.9 %	80-120							

Chloride, SM4500Cl-B		mg/kg		Analyzed By: HM					
Analyte	Result	Reporting Limit	Analyzed	Method Blank	BS	% Recovery	True Value QC	RPD	Qualifier
Chloride	160	16.0	11/20/2010	ND	400	100	400	3.92	

TPH 8015M		mg/kg		Analyzed By: AB					
Analyte	Result	Reporting Limit	Analyzed	Method Blank	BS	% Recovery	True Value QC	RPD	Qualifier
GRO C6-C10	<10.0	10.0	11/20/2010	ND	187	93.6	200	17.3	
DRO >C10-C28	<10.0	10.0	11/20/2010	ND	152	75.8	200	1.12	
Surrogate 1-Chlorooctane	90.3 %	70-130							
Surrogate 1-Chlorooctadecane	87.9 %	70-130							

Cardinal Laboratories

*=Accredited Analyte

PLEASE NOTE: Liability and Damages. Cardinal's liability and client's exclusive remedy for any claim arising, whether based in contract or tort, shall be limited to the amount paid by client for analyses. All claims, including those for negligence and any other cause whatsoever shall be deemed waived unless made in writing and received by Cardinal within thirty (30) days after completion of the applicable service. In no event shall Cardinal be liable for incidental or consequential damages, including, without limitation, business interruptions, loss of use, or loss of profits incurred by client, its subsidiaries, affiliates or successors arising out of or related to the performance of the services hereunder by Cardinal, regardless of whether such claim is based upon any of the above stated reasons or otherwise. Results relate only to the samples identified above. This report shall not be reproduced except in full with written approval of Cardinal Laboratories.



Celey D. Keene, Lab Director/Quality Manager

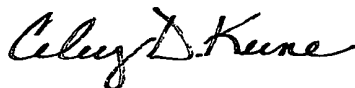
Notes and Definitions

ND	Analyte NOT DETECTED at or above the reporting limit
RPD	Relative Percent Difference
**	Samples not received at proper temperature of 6°C or below.
***	Insufficient time to reach temperature.
-	Chloride by SM4500Cl-B does not require samples be received at or below 6°C Samples reported on an as received basis (wet) unless otherwise noted on report

Cardinal Laboratories

* = Accredited Analyte

PLEASE NOTE: Liability and Damages. Cardinal's liability and client's exclusive remedy for any claim arising, whether based in contract or tort, shall be limited to the amount paid by client for analyses. All claims, including those for negligence and any other cause whatsoever shall be deemed waived unless made in writing and received by Cardinal within thirty (30) days after completion of the applicable service. In no event shall Cardinal be liable for incidental or consequential damages, including, without limitation, business interruptions, loss of use, or loss of profits incurred by client, its subsidiaries, affiliates or successors arising out of or related to the performance of the services hereunder by Cardinal, regardless of whether such claim is based upon any of the above stated reasons or otherwise. Results relate only to the samples identified above. This report shall not be reproduced except in full with written approval of Cardinal Laboratories



Celey D. Keene, Lab Director/Quality Manager



CHAIN OF CUSTODY RECORD

Page ____ of ____

Client: EMERQUEST OPERATING

Contact: LEE GARDNER

Address: 2708 FARMINGTON

BLOCK #1 FARMINGTON

Phone Number: 505 325-0312

FAX Number: _____

NOTES:

- 1) Ensure proper container packaging.
- 2) Ship samples promptly following collection.
- 3) Designate Sample Reject Disposition.

PO# _____

Project Name: TAPES TO P

Table 1. - Matrix Type

- 1 = Surface Water, 2 = Ground Water
3 = Soil/Sediment, 4 = Rinsate, 5 = Oil
6 = Waste, 7 = Other (Specify) _____

FOR GAL USE ONLY

GAL JOB # _____

Samplers Signature: Lee Gardner

Lab Name: Green Analytical Laboratories (970) 247-4220 FAX (970) 247-4227										Analyses Required										Comments	
Address: 75 Suttle Street, Durango, CO 81303																					
Sample ID	Collection		Collected by: (Init.)	Miscellaneous			Preservative(s)					BTEX	TPH	CHLORIDES							
	Date	Time		Matrix Type From Table 1	No. of Containers	Sample Filtered ? Y/N	Unpreserved (Ice Only)	HNO3	HCL	H2SO4	NAOH									Other (Specify)	
H21331-																					
1- 151-GE	11/16/10	9:40	LG	3	1	A	X						X	X	X						
2- 151-2E #1	11/16/10	11:30	LG	3	1	Z	X						X	X	X						
3- 151-2E #2	11/16/10	12:15	LG	3	1	Z	X						X	X	X						
4- C-2 #1	11/16/10	1:30	LG	3	1	A	X						X	X	X						
5- C-2 #2	11/16/10	1:45	LG	3	1	Z	X						X	X	X						
6.																					
7.																					
8.																					
9.																					
10.																					
Relinquished by: <u>Lee Gardner</u>			Date: <u>11/16/10</u>		Time: <u>15:30</u>		Received by: <u>Mike Clark</u>			Date: <u>11/15/10</u>		Time: <u>13:56</u>									
Relinquished by: <u>Lee Gardner</u>			Date: <u>11/16/10</u>		Time: <u>15:30</u>		Received by: <u>John Benson</u>			Date: <u>11/18/10</u>		Time: <u>9:35</u>									

* Sample Reject: [] Return ☒ Dispose [] Store (30 Days)

6C #26

C

#

8

P

17

1

