

District I  
1625 N French Dr , Hobbs, NM 88240  
District II  
1301 W Grand Avenue, Artesia, NM 88210  
District III  
1000 Rio Brazos Road, Aztec, NM 87410  
District IV  
1220 S St Francis Dr , Santa Fe, NM 87505

State of New Mexico  
Energy Minerals and Natural Resources  
Department  
Oil Conservation Division  
1220 South St. Francis Dr.  
Santa Fe, NM 87505

Form C-144  
July 21, 2008

For temporary pits, closed-loop systems, and below-grade tanks, submit to the appropriate NMOCD District Office  
For permanent pits and exceptions submit to the Santa Fe Environmental Bureau office and provide a copy to the appropriate NMOCD District Office

**Pit, Closed-Loop System, Below-Grade Tank, or  
Proposed Alternative Method Permit or Closure Plan Application**

Type of action: ☐ Permit of a pit, closed-loop system, below-grade tank, or proposed alternative method  
☒ Closure of a pit, closed-loop system, below-grade tank, or proposed alternative method  
☐ Modification to an existing permit  
☐ Closure plan only submitted for an existing permitted or non-permitted pit, closed-loop system, below-grade tank, or proposed alternative method

**Instructions: Please submit one application (Form C-144) per individual pit, closed-loop system, below-grade tank or alternative request**

Please be advised that approval of this request does not relieve the operator of liability should operations result in pollution of surface water, ground water or the environment. Nor does approval relieve the operator of its responsibility to comply with any other applicable governmental authority's rules, regulations or ordinances.

1.  
Operator: EnerVest Operating, LLC OGRID # 143199  
Address: 1001 Fannin St. Ste 800 Houston, Texas 77002  
Facility or well name: Jicarilla Apache Tribal 151 #6E Tank 2  
API Number: 30-039-23165 OCD Permit Number 6731  
U/L or Qtr/Qtr O Section 9 Township 26N Range 05W County: Rio Arriba  
Center of Proposed Design: Latitude 36.4721 Longitude 107.35985 NAD ☐ 1927 ☒ 1983  
Surface Owner: ☐ Federal ☐ State ☐ Private ☒ Tribal Trust or Indian Allotment

2.  
☐ **Pit:** Subsection F or G of 19.15 17 11 NMAC  
Temporary: ☐ Drilling ☐ Workover  
☐ Permanent ☐ Emergency ☐ Cavitation ☐ P&A  
☐ Lined ☐ Unlined Liner type: Thickness \_\_\_\_\_ mil ☐ LLDPE ☐ HDPE ☐ PVC ☐ Other \_\_\_\_\_  
☐ String-Reinforced  
Liner Seams: ☐ Welded ☐ Factory ☐ Other \_\_\_\_\_ Volume: \_\_\_\_\_ bbl Dimensions L \_\_\_\_\_ x W \_\_\_\_\_ x D \_\_\_\_\_

RCVD FEB 9 '12

OIL CONS. DIV.

DIST. 3

3.  
☐ **Closed-loop System:** Subsection H of 19.15.17 11 NMAC  
Type of Operation: ☐ P&A ☐ Drilling a new well ☐ Workover or Drilling (Applies to activities which require prior approval of a permit or notice of intent)  
☐ Drying Pad ☐ Above Ground Steel Tanks ☐ Haul-off Bins ☐ Other \_\_\_\_\_  
☐ Lined ☐ Unlined Liner type: Thickness \_\_\_\_\_ mil ☐ LLDPE ☐ HDPE ☐ PVC ☐ Other \_\_\_\_\_  
Liner Seams ☐ Welded ☐ Factory ☐ Other \_\_\_\_\_

4.  
☒ **Below-grade tank:** Subsection I of 19.15 17.11 NMAC  
Volume: 95 bbl Type of fluid: Primarily produced water w/ compressor skid precipitation & incidental lubricating oil  
Tank Construction material: Steel w/ expanded metal cover  
☐ Secondary containment with leak detection ☐ Visible sidewalls, liner, 6-inch lift and automatic overflow shut-off  
☐ Visible sidewalls and liner ☐ Visible sidewalls only ☒ Other \_\_\_\_\_ electronic monitoring \_\_\_\_\_  
Liner type Thickness \_\_\_\_\_ mil ☐ HDPE ☐ PVC ☐ Other \_\_\_\_\_

5.  
☐ **Alternative Method:**  
Submittal of an exception request is required. Exceptions must be submitted to the Santa Fe Environmental Bureau office for consideration of approval

6

**Fencing:** Subsection D of 19.15.17.11 NMAC (*Applies to permanent pits, temporary pits, and below-grade tanks*)

- ☐ Chain link, six feet in height, two strands of barbed wire at top (*Required if located within 1000 feet of a permanent residence, school, hospital, institution or church*)
- ☐ Four foot height, four strands of barbed wire evenly spaced between one and four feet
- ☒ Alternate Please specify \_\_\_\_\_ 42" Hog-wire fence with 2 strands barbed-wire on top \_\_\_\_\_

7.

**Netting:** Subsection E of 19.15.17 11 NMAC (*Applies to permanent pits and permanent open top tanks*)

- ☒ Screen ☐ Netting ☐ Other \_\_\_\_\_
- ☐ Monthly inspections (If netting or screening is not physically feasible)

8

**Signs:** Subsection C of 19.15.17.11 NMAC

- ☐ 12"x 24", 2" lettering, providing Operator's name, site location, and emergency telephone numbers
- ☒ Signed in compliance with 19 15.3 103 NMAC

9.

**Administrative Approvals and Exceptions:**

Justifications and/or demonstrations of equivalency are required Please refer to 19.15.17 NMAC for guidance.

**Please check a box if one or more of the following is requested, if not leave blank:**

- ☐ Administrative approval(s): Requests must be submitted to the appropriate division district or the Santa Fe Environmental Bureau office for consideration of approval.
- ☐ Exception(s). Requests must be submitted to the Santa Fe Environmental Bureau office for consideration of approval

10

**Siting Criteria (regarding permitting):** 19.15.17.10 NMAC

**Instructions:** The applicant must demonstrate compliance for each siting criteria below in the application. Recommendations of acceptable source material are provided below. Requests regarding changes to certain siting criteria may require administrative approval from the appropriate district office or may be considered an exception which must be submitted to the Santa Fe Environmental Bureau office for consideration of approval. Applicant must attach justification for request. Please refer to 19.15.17.10 NMAC for guidance. Siting criteria does not apply to drying pads or above-grade tanks associated with a closed-loop system.

Ground water is less than 50 feet below the bottom of the temporary pit, permanent pit, or below-grade tank. - NM Office of the State Engineer - iWATERS database search; USGS; Data obtained from nearby wells	<input type="checkbox"/> Yes <input type="checkbox"/> No
Within 300 feet of a continuously flowing watercourse, or 200 feet of any other significant watercourse or lakebed, sinkhole, or playa lake (measured from the ordinary high-water mark). - Topographic map; Visual inspection (certification) of the proposed site	<input type="checkbox"/> Yes <input type="checkbox"/> No
Within 300 feet from a permanent residence, school, hospital, institution, or church in existence at the time of initial application. (Applies to temporary, emergency, or cavitation pits and below-grade tanks) - Visual inspection (certification) of the proposed site; Aerial photo, Satellite image	<input type="checkbox"/> Yes <input type="checkbox"/> No <input type="checkbox"/> NA
Within 1000 feet from a permanent residence, school, hospital, institution, or church in existence at the time of initial application. (Applies to permanent pits) - Visual inspection (certification) of the proposed site, Aerial photo, Satellite image	<input type="checkbox"/> Yes <input type="checkbox"/> No <input type="checkbox"/> NA
Within 500 horizontal feet of a private, domestic fresh water well or spring that less than five households use for domestic or stock watering purposes, or within 1000 horizontal feet of any other fresh water well or spring, in existence at the time of initial application. - NM Office of the State Engineer - iWATERS database search, Visual inspection (certification) of the proposed site	<input type="checkbox"/> Yes <input type="checkbox"/> No
Within incorporated municipal boundaries or within a defined municipal fresh water well field covered under a municipal ordinance adopted pursuant to NMSA 1978, Section 3-27-3, as amended - Written confirmation or verification from the municipality, Written approval obtained from the municipality	<input type="checkbox"/> Yes <input type="checkbox"/> No
Within 500 feet of a wetland. - US Fish and Wildlife Wetland Identification map, Topographic map, Visual inspection (certification) of the proposed site	<input type="checkbox"/> Yes <input type="checkbox"/> No
Within the area overlying a subsurface mine - Written confirmation or verification or map from the NM EMNRD-Mining and Mineral Division	<input type="checkbox"/> Yes <input type="checkbox"/> No
Within an unstable area - Engineering measures incorporated into the design, NM Bureau of Geology & Mineral Resources; USGS; NM Geological Society; Topographic map	<input type="checkbox"/> Yes <input type="checkbox"/> No
Within a 100-year floodplain - FEMA map	<input type="checkbox"/> Yes <input type="checkbox"/> No

11

**Temporary Pits, Emergency Pits, and Below-grade Tanks Permit Application Attachment Checklist:** Subsection B of 19.15.17.9 NMAC  
**Instructions:** Each of the following items must be attached to the application. Please indicate, by a check mark in the box, that the documents are attached.

- ☐ Hydrogeologic Report (Below-grade Tanks) - based upon the requirements of Paragraph (4) of Subsection B of 19.15.17.9 NMAC  
☐ Hydrogeologic Data (Temporary and Emergency Pits) - based upon the requirements of Paragraph (2) of Subsection B of 19.15.17.9 NMAC  
☐ Siting Criteria Compliance Demonstrations - based upon the appropriate requirements of 19.15.17.10 NMAC  
☐ Design Plan - based upon the appropriate requirements of 19.15.17.11 NMAC  
☐ Operating and Maintenance Plan - based upon the appropriate requirements of 19.15.17.12 NMAC  
☐ Closure Plan (Please complete Boxes 14 through 18, if applicable) - based upon the appropriate requirements of Subsection C of 19.15.17.9 NMAC and 19.15.17.13 NMAC  
☐ Previously Approved Design (attach copy of design) API Number: \_\_\_\_\_ or Permit Number: \_\_\_\_\_

12.

**Closed-loop Systems Permit Application Attachment Checklist:** Subsection B of 19.15.17.9 NMAC  
**Instructions:** Each of the following items must be attached to the application. Please indicate, by a check mark in the box, that the documents are attached.

- ☐ Geologic and Hydrogeologic Data (only for on-site closure) - based upon the requirements of Paragraph (3) of Subsection B of 19.15.17.9  
☐ Siting Criteria Compliance Demonstrations (only for on-site closure) - based upon the appropriate requirements of 19.15.17.10 NMAC  
☐ Design Plan - based upon the appropriate requirements of 19.15.17.11 NMAC  
☐ Operating and Maintenance Plan - based upon the appropriate requirements of 19.15.17.12 NMAC  
☐ Closure Plan (Please complete Boxes 14 through 18, if applicable) - based upon the appropriate requirements of Subsection C of 19.15.17.9 NMAC and 19.15.17.13 NMAC  
☐ Previously Approved Design (attach copy of design) API Number: \_\_\_\_\_  
☐ Previously Approved Operating and Maintenance Plan API Number: \_\_\_\_\_ (Applies only to closed-loop system that use above ground steel tanks or haul-off bins and propose to implement waste removal for closure)

13.

**Permanent Pits Permit Application Checklist:** Subsection B of 19.15.17.9 NMAC  
**Instructions:** Each of the following items must be attached to the application. Please indicate, by a check mark in the box, that the documents are attached.

- ☐ Hydrogeologic Report - based upon the requirements of Paragraph (1) of Subsection B of 19.15.17.9 NMAC  
☐ Siting Criteria Compliance Demonstrations - based upon the appropriate requirements of 19.15.17.10 NMAC  
☐ Climatological Factors Assessment  
☐ Certified Engineering Design Plans - based upon the appropriate requirements of 19.15.17.11 NMAC  
☐ Dike Protection and Structural Integrity Design - based upon the appropriate requirements of 19.15.17.11 NMAC  
☐ Leak Detection Design - based upon the appropriate requirements of 19.15.17.11 NMAC  
☐ Liner Specifications and Compatibility Assessment - based upon the appropriate requirements of 19.15.17.11 NMAC  
☐ Quality Control/Quality Assurance Construction and Installation Plan  
☐ Operating and Maintenance Plan - based upon the appropriate requirements of 19.15.17.12 NMAC  
☐ Freeboard and Overtopping Prevention Plan - based upon the appropriate requirements of 19.15.17.11 NMAC  
☐ Nuisance or Hazardous Odors, including H<sub>2</sub>S, Prevention Plan  
☐ Emergency Response Plan  
☐ Oil Field Waste Stream Characterization  
☐ Monitoring and Inspection Plan  
☐ Erosion Control Plan  
☐ Closure Plan - based upon the appropriate requirements of Subsection C of 19.15.17.9 NMAC and 19.15.17.13 NMAC

14

**Proposed Closure:** 19.15.17.13 NMAC  
**Instructions:** Please complete the applicable boxes, Boxes 14 through 18, in regards to the proposed closure plan.

- Type: ☐ Drilling ☐ Workover ☐ Emergency ☐ Cavitation ☐ P&A ☐ Permanent Pit ☐ Below-grade Tank ☐ Closed-loop System  
☐ Alternative  
 Proposed Closure Method: ☐ Waste Excavation and Removal  
☐ Waste Removal (Closed-loop systems only)  
☐ On-site Closure Method (Only for temporary pits and closed-loop systems)  
☐ In-place Burial ☐ On-site Trench Burial  
☐ Alternative Closure Method (Exceptions must be submitted to the Santa Fe Environmental Bureau for consideration)

15

**Waste Excavation and Removal Closure Plan Checklist:** (19.15.17.13 NMAC) **Instructions:** Each of the following items must be attached to the closure plan. Please indicate, by a check mark in the box, that the documents are attached.

- ☐ Protocols and Procedures - based upon the appropriate requirements of 19.15.17.13 NMAC  
☐ Confirmation Sampling Plan (if applicable) - based upon the appropriate requirements of Subsection F of 19.15.17.13 NMAC  
☐ Disposal Facility Name and Permit Number (for liquids, drilling fluids and drill cuttings)  
☐ Soil Backfill and Cover Design Specifications - based upon the appropriate requirements of Subsection H of 19.15.17.13 NMAC  
☐ Re-vegetation Plan - based upon the appropriate requirements of Subsection I of 19.15.17.13 NMAC  
☐ Site Reclamation Plan - based upon the appropriate requirements of Subsection G of 19.15.17.13 NMAC

16. **Waste Removal Closure For Closed-loop Systems That Utilize Above Ground Steel Tanks or Haul-off Bins Only:** (19.15 17 13 D NMAC)  
**Instructions:** Please identify the facility or facilities for the disposal of liquids, drilling fluids and drill cuttings. Use attachment if more than two facilities are required.

Disposal Facility Name: \_\_\_\_\_ Disposal Facility Permit Number: \_\_\_\_\_  
 Disposal Facility Name: \_\_\_\_\_ Disposal Facility Permit Number: \_\_\_\_\_

Will any of the proposed closed-loop system operations and associated activities occur on or in areas that *will not* be used for future service and operations?  
☐ Yes (If yes, please provide the information below) ☐ No

*Required for impacted areas which will not be used for future service and operations*  
☐ Soil Backfill and Cover Design Specifications - based upon the appropriate requirements of Subsection H of 19.15.17.13 NMAC  
☐ Re-vegetation Plan - based upon the appropriate requirements of Subsection I of 19 15 17.13 NMAC  
☐ Site Reclamation Plan - based upon the appropriate requirements of Subsection G of 19 15 17.13 NMAC

17. **Siting Criteria (regarding on-site closure methods only):** 19 15 17 10 NMAC  
**Instructions:** Each siting criteria requires a demonstration of compliance in the closure plan. Recommendations of acceptable source material are provided below. Requests regarding changes to certain siting criteria may require administrative approval from the appropriate district office or may be considered an exception which must be submitted to the Santa Fe Environmental Bureau office for consideration of approval. Justifications and/or demonstrations of equivalency are required. Please refer to 19.15.17.10 NMAC for guidance.

Ground water is less than 50 feet below the bottom of the buried waste - NM Office of the State Engineer - iWATERS database search, USGS, Data obtained from nearby wells	<input type="checkbox"/> Yes <input type="checkbox"/> No <input type="checkbox"/> NA
Ground water is between 50 and 100 feet below the bottom of the buried waste - NM Office of the State Engineer - iWATERS database search, USGS; Data obtained from nearby wells	<input type="checkbox"/> Yes <input type="checkbox"/> No <input type="checkbox"/> NA
Ground water is more than 100 feet below the bottom of the buried waste. - NM Office of the State Engineer - iWATERS database search, USGS, Data obtained from nearby wells	<input type="checkbox"/> Yes <input type="checkbox"/> No <input type="checkbox"/> NA
Within 300 feet of a continuously flowing watercourse, or 200 feet of any other significant watercourse or lakebed, sinkhole, or playa lake (measured from the ordinary high-water mark) - Topographic map, Visual inspection (certification) of the proposed site	<input type="checkbox"/> Yes <input type="checkbox"/> No
Within 300 feet from a permanent residence, school, hospital, institution, or church in existence at the time of initial application. - Visual inspection (certification) of the proposed site, Aerial photo; Satellite image	<input type="checkbox"/> Yes <input type="checkbox"/> No
Within 500 horizontal feet of a private, domestic fresh water well or spring that less than five households use for domestic or stock watering purposes, or within 1000 horizontal feet of any other fresh water well or spring, in existence at the time of initial application - NM Office of the State Engineer - iWATERS database, Visual inspection (certification) of the proposed site	<input type="checkbox"/> Yes <input type="checkbox"/> No
Within incorporated municipal boundaries or within a defined municipal fresh water well field covered under a municipal ordinance adopted pursuant to NMSA 1978, Section 3-27-3, as amended - Written confirmation or verification from the municipality, Written approval obtained from the municipality	<input type="checkbox"/> Yes <input type="checkbox"/> No
Within 500 feet of a wetland. - US Fish and Wildlife Wetland Identification map; Topographic map, Visual inspection (certification) of the proposed site	<input type="checkbox"/> Yes <input type="checkbox"/> No
Within the area overlying a subsurface mine. - Written confirmation or verification or map from the NM EMNRD-Mining and Mineral Division	<input type="checkbox"/> Yes <input type="checkbox"/> No
Within an unstable area. - Engineering measures incorporated into the design, NM Bureau of Geology & Mineral Resources; USGS; NM Geological Society, Topographic map	<input type="checkbox"/> Yes <input type="checkbox"/> No
Within a 100-year floodplain. - FEMA map	<input type="checkbox"/> Yes <input type="checkbox"/> No

18. **On-Site Closure Plan Checklist:** (19 15 17.13 NMAC) **Instructions:** Each of the following items must be attached to the closure plan. Please indicate, by a check mark in the box, that the documents are attached.

☐ Siting Criteria Compliance Demonstrations - based upon the appropriate requirements of 19.15.17 10 NMAC  
☐ Proof of Surface Owner Notice - based upon the appropriate requirements of Subsection F of 19 15 17 13 NMAC  
☐ Construction/Design Plan of Burial Trench (if applicable) based upon the appropriate requirements of 19 15 17 11 NMAC  
☐ Construction/Design Plan of Temporary Pit (for in-place burial of a drying pad) - based upon the appropriate requirements of 19 15 17 11 NMAC  
☐ Protocols and Procedures - based upon the appropriate requirements of 19 15.17.13 NMAC  
☐ Confirmation Sampling Plan (if applicable) - based upon the appropriate requirements of Subsection F of 19.15 17 13 NMAC  
☐ Waste Material Sampling Plan - based upon the appropriate requirements of Subsection F of 19.15.17 13 NMAC  
☐ Disposal Facility Name and Permit Number (for liquids, drilling fluids and drill cuttings or in case on-site closure standards cannot be achieved)  
☐ Soil Cover Design - based upon the appropriate requirements of Subsection H of 19 15 17.13 NMAC  
☐ Re-vegetation Plan - based upon the appropriate requirements of Subsection I of 19 15.17 13 NMAC  
☐ Site Reclamation Plan - based upon the appropriate requirements of Subsection G of 19 15 17 13 NMAC

19

**Operator Application Certification:**

I hereby certify that the information submitted with this application is true, accurate and complete to the best of my knowledge and belief

Name (Print) Janet M Bienski Title Regulatory AssistantSignature *Janet M Bienski* Date: 2/8/12e-mail address jbienski@enervest.net Telephone: 713-495-1571

20.

**OCD Approval:** ☐ Permit Application (including closure plan) ☒ Closure Plan (only) ☐ OCD Conditions (see attachment)OCD Representative Signature: *Jonathan D. Kelly* Approval Date: 3/13/2012Title: Compliance Officer OCD Permit Number: \_\_\_\_\_

21

**Closure Report (required within 60 days of closure completion):** Subsection K of 19 15.17 13 NMAC*Instructions: Operators are required to obtain an approved closure plan prior to implementing any closure activities and submitting the closure report. The closure report is required to be submitted to the division within 60 days of the completion of the closure activities. Please do not complete this section of the form until an approved closure plan has been obtained and the closure activities have been completed.*☒ Closure Completion Date: 5/11/11

22

**Closure Method:**☐ Waste Excavation and Removal ☐ On-Site Closure Method ☐ Alternative Closure Method ☐ Waste Removal (Closed-loop systems only)  
☐ If different from approved plan, please explain

23.

**Closure Report Regarding Waste Removal Closure For Closed-loop Systems That Utilize Above Ground Steel Tanks or Haul-off Bins Only:***Instructions: Please identify the facility or facilities for where the liquids, drilling fluids and drill cuttings were disposed. Use attachment if more than two facilities were utilized.*

Disposal Facility Name: \_\_\_\_\_ Disposal Facility Permit Number \_\_\_\_\_

Disposal Facility Name: \_\_\_\_\_ Disposal Facility Permit Number \_\_\_\_\_

Were the closed-loop system operations and associated activities performed on or in areas that *will not* be used for future service and operations?☐ Yes (If yes, please demonstrate compliance to the items below) ☐ No*Required for impacted areas which will not be used for future service and operations*

- ☐
- Site Reclamation (Photo Documentation)
- 
- ☐
- Soil Backfilling and Cover Installation
- 
- ☐
- Re-vegetation Application Rates and Seeding Technique

24.

**Closure Report Attachment Checklist:** *Instructions: Each of the following items must be attached to the closure report. Please indicate, by a check mark in the box, that the documents are attached.*

- ☒
- Proof of Closure Notice (surface owner and division)
- 
- ☐
- Proof of Deed Notice (required for on-site closure)
- 
- ☒
- Plot Plan (for on-site closures and temporary pits)
- 
- ☒
- Confirmation Sampling Analytical Results (if applicable)
- 
- ☐
- Waste Material Sampling Analytical Results (required for on-site closure)
- 
- ☒
- Disposal Facility Name and Permit Number
- 
- ☐
- Soil Backfilling and Cover Installation
- 
- ☐
- Re-vegetation Application Rates and Seeding Technique
- 
- ☒
- Site Reclamation (Photo Documentation)

On-site Closure Location: Latitude 36.4721 Longitude 107 35985 NAD ☐ 1927 ☒ 1983

25

**Operator Closure Certification:**

I hereby certify that the information and attachments submitted with this closure report is true, accurate and complete to the best of my knowledge and belief I also certify that the closure complies with all applicable closure requirements and conditions specified in the approved closure plan

Name (Print): Janet M. Bienski Title: Regulatory AssistantSignature: *Janet M Bienski* Date: 2/8/12e-mail address jbienski@enervest.net Telephone: 713-495-1571

All distances must be from the outer boundaries of the Section.

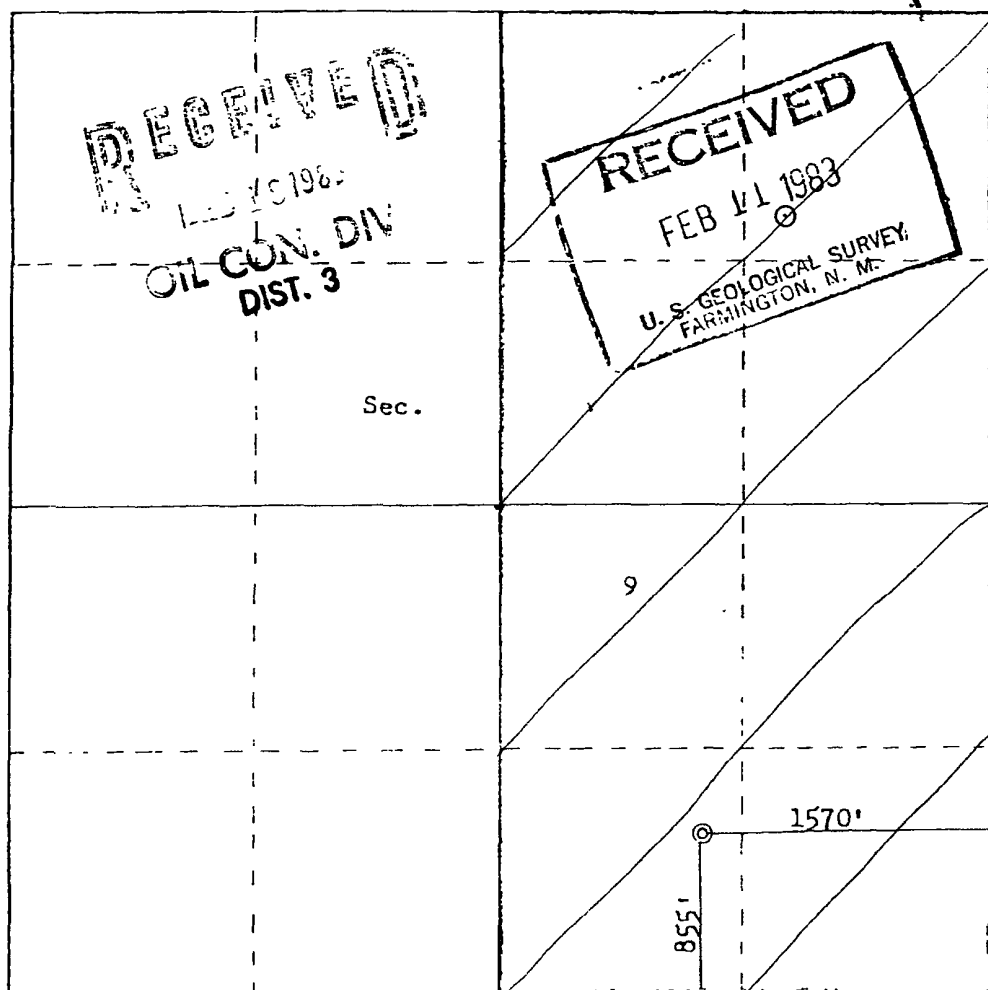
Operator <b>AMOCO PRODUCTION COMPANY</b>			Lease <b>JICARILLA APACHE TRIBAL 151</b>		Well No. <b>6E</b>
Unit Letter <b>0</b>	Section <b>9</b>	Township <b>26N</b>	Range <b>5W</b>	County <b>Rio Arriba</b>	
Actual Footage Location of Well: <b>855</b> feet from the <b>South</b> line and <b>1570</b> feet from the <b>East</b> line					
Ground Level Elev. <b>6936</b>	Producing Formation <b>Dakota</b>		Pool <b>Basin Dakota</b>		Dedicated Acreage: <b>E 320</b> Acres

1. Outline the acreage dedicated to the subject well by colored pencil or hachure marks on the plat below.
2. If more than one lease is dedicated to the well, outline each and identify the ownership thereof (both as to working interest and royalty).
3. If more than one lease of different ownership is dedicated to the well, have the interests of all owners been consolidated by communitization, unitization, force-pooling, etc?

☐ Yes ☐ No If answer is "yes," type of consolidation \_\_\_\_\_

If answer is "no," list the owners and tract descriptions which have actually been consolidated. (Use reverse side of this form if necessary.) \_\_\_\_\_

No allowable will be assigned to the well until all interests have been consolidated (by communitization, unitization, forced-pooling, or otherwise) or until a non-standard unit, eliminating such interests, has been approved by the Commission.



CERTIFICATION

I hereby certify that the information contained herein is true and complete to the best of my knowledge and belief.

*D. H. Shoemaker*

Name  
**D. H. SHOEMAKER**

Position  
**DISTRICT ENGINEER**

Company  
**AMOCO PRODUCTION COMPANY**

Date  
**JANUARY 17, 1983**

I hereby certify that the well location shown on this plat was plotted from field notes of actual surveys made by me or under my supervision, and that the same is true and correct to the best of my knowledge and belief

Date Surveyed  
**November 15, 1982**

Registered Professional Engineer and Land Surveyor

*Fred B. Kerr Jr.*  
**Fred B. Kerr Jr.**

Certificate No. \_\_\_\_\_

**Bienski, Janet**

---

**From:** Deal, Chester  
**Sent:** Friday, May 06, 2011 10 38 AM  
**To:** Bienski, Janet  
**Cc:** Ahrens, Mickey  
**Subject:** RE: Soil Sample results

Janet,

Please set up the JAT 151#6E pit to be backfilled on Wed 5/11/2011. The soil sample on the Jicarilla A#8M is only a back ground sample for the reserve pit.

Thanks,

*Chester L. Deal*

Sr Production Foreman  
Enervest Operating, LLC  
2700 Farmington Ave , Bldg K Suite 1  
Farmington, NM 87401  
Office Phone: (505) 325-0318  
Cell Phone (505) 320-7668  
E-mail [cdeal@enervest.net](mailto:cdeal@enervest.net)

---

**From:** Bienski, Janet  
**Sent:** Thursday, May 05, 2011 12:27 PM  
**To:** Deal, Chester; Thomas, Lee  
**Subject:** Soil Sample results

We recently received results on recent soil samples for Jicarilla 151 #6E, also included were results for the Jicarilla A 8M #1.....Is that a mistake b/c we show no record of this tank...Please advise. Thank you.

Janet Bienski  
Regulatory Assistant  
713-495-1571  
[jbienski@enervest.net](mailto:jbienski@enervest.net)



CERTIFIED MAIL W/ RETURN RECEIPT  
7009-0080-0000-0442-7410

August 16, 2010

Mr. Manuel Myore  
Bureau of Indian Affairs  
Jicarilla Agency  
Branch of Real Property  
P. O. Box 167  
Dulce, New Mexico 87528

RE: Closure of Below-Grade Tank  
Jicarilla Apache Tribal 151 #06E – Vent Tank  
API 30-039-23165

Dear Mr. Myore,

In an effort to be in compliance with NMAC 19.15.17.13 (J) regarding notifications to surface owners concerning the closure of below-grade tanks, please be advised that EnerVest Operating, LLC is in process of preparing OCD Form C-144 to close the below-grade tank(s) on the above referenced property.

This is one of two below-grade tanks on this location and is no longer necessary. It is our intent to close this tank by November 1, 2010. This timeline is completely dependent upon the availability of equipment, testing requirements, and weather conditions. EnerVest will fully comply with NMAC 19.15.17.13 (E) in all work performed.

If you have any questions regarding this process, please feel free to contact the undersigned at 713-495-6530 at any time.

Sincerely,

A handwritten signature in black ink, appearing to read 'Ronnie L. Young'.

Ronnie L. Young  
Compliance Supervisor  
EnerVest Operating, LLC  
Western Division

SENDER: COMPLETE THIS SECTION		COMPLETE THIS SECTION ON DELIVERY	
<p><input checked="" type="checkbox"/> Complete items 1, 2, and 3. Also complete item 4 if Restricted Delivery is desired.</p> <p><input checked="" type="checkbox"/> Print your name and address on the reverse so that we can return the card to you.</p> <p><input checked="" type="checkbox"/> Attach this card to the back of the mailpiece, or on the front if space permits.</p>		<p>A. Signature  <input checked="" type="checkbox"/> Agent  <input checked="" type="checkbox"/> Addressee  <i>X Kenny Harrison</i></p>	
<p>1. Article Addressed to:</p> <p>Mr. Manuel Myore  Bureau of Indian Affairs  Jicarilla Agency  Branch of Real Property  PO Box 167  Dulce, New Mexico 87528</p>		<p>B. Received by (Printed Name)  <i>Kenny Harrison</i></p> <p>C. Date of Delivery  <i>8-18-10</i></p>	
<p>2. Article Number  (Transfer from service label)</p>		<p>D. Is delivery address different from item 1? <input type="checkbox"/> Yes  If YES, enter delivery address below: <input type="checkbox"/> No</p>	
<p>PS Form 3811, February 2004</p>		<p><i>JAT 151#6E VENT TADK</i></p>	
<p>3. Service Type  <input checked="" type="checkbox"/> Certified Mail <input type="checkbox"/> Express Mail  <input type="checkbox"/> Registered <input checked="" type="checkbox"/> Return Receipt for Merchandise  <input type="checkbox"/> Insured Mail <input type="checkbox"/> C.O.D.</p>		<p>4. Restricted Delivery? (Extra Fee) <input type="checkbox"/> Yes</p>	
<p>7009 0080 0000 0442 7410</p>		<p>Domestic Return Receipt</p>	

UNITED STATES POSTAL SERVICE

15 AUG 2010 PM 4:10

First-Class Mail  
Postage & Fees Paid  
USPS  
Permit No. G-10

15 AUG 2010

• Sender: Please print your name, address, and ZIP+4 in this box

EnerVest Management Partners, LTD.  
1001 Fannin Street, Suite 800  
Houston, Texas 77002-6707

*Ronnie Yang*

USPS

15321

**Jicarilla Apache Tribal 151 #006E**  
**API 30-039-23165**

On May 11, 2011, we removed below-grade tank.

Inspected bottom of below-grade tank and ground under and found no evidence of leaks.

Sent samples to Cardinal Lab for testing. Samples returned within guidelines.

Backfill location.

RCVD MAR 5 '12

OIL CONS. DIV.

DIST. 3

## **EnerVest Operating, LLC**

### **Below-Grade Tank**

### **Closure Report**

**Lease & Well: Jicarilla Apache Tribal 151 6E (vent tank) (tank 2)**

**API No: 30-039-23165**

In accordance with Rule 19.15.17.13 NMAC, the following information describes the closure of the below-grade tank on the above well. All proper documentation regarding closure activities is being included with the C-144, closure report. This below-grade tank was constructed prior to June 16, 2008, the effective date of this rule.

The surface owner shall be notified of the closure of this below-grade tank.

**Manuel Myore/Bureau of Indian Affairs was notified of the closure of this below-grade tank via U. S. Mail Registered Mail with a Return Receipt Requested on August 16, 2010.**

At least a 72 hour notice will be given to the appropriate division district office, via U. S. Mail or electronic e-mail, prior to the closure of any below-grade tank.

**Aztec OCD Office was not notified due to crew availability and opportunity to beat the weather. This was an oversight and steps have been taken that this does not happen again.**

All free standing liquids will be removed prior to any other activity concerning the closure of the below-grade tank. All liquids were disposed of in a division-approved facility in a manner that the appropriate division district office approves.

**All recovered liquids were disposed of at TNT Land Farm/Permit #NM-01-008. This below-grade tank was steam-cleaned with hot water and stored for future use.**

Upon removal of the below-grade tank from its containment area, the surface directly below this tank will be inspected for any visible signs of leakage. If leakage is detected, a grab sample will be taken from that area. Also, a five point composite sample will be taken from where the tank was sitting. All samples will be analyzed for the following:

<b>Components</b>	<b>Test Method</b>	<b>Limits (mg/Kg)</b>	<b>Sample Results</b>
Benzene	EPA SW-846 8021B or 8260B	0.2	.100
BTEX	EPA SW-846 8021B or 8260B	50	.300
TPH	EPA SW-846 418.1	100	10
Chlorides	EPA 300.1	250 or background, whichever is greater	16

The results of all sampling shall be reported to the division on Form C-141.

**Upon removal of this below-grade tank, there was no visible evidence of any leakage. a five point composite sample was taken from where the tank was sitting. The samples were sent in for analysis and the results reported to the OCD Aztec Office on C-141 on 9/29/11. The results of all testing were within tolerance levels as established by the OCD.**

Upon sampling has confirmed no leaks were evidence, the area was back filled and surrounding area restored. These below-grade tanks are on the approved pad sites and no re-seeding was performed.

Photographic evidence of this work was taken and will be submitted with our completed C-144 for the closure of this below-grade tank.

**Analytical Results For:**

 ENERVEST  
 LEE GARDNER  
 2700 FARMINGTON BLD K SUITE #1  
 FARMINGTON NM, 87401  
 Fax To: NOT GIVEN

 Received: 11/18/2010  
 Reported: 11/24/2010  
 Project Name: TAPICITO PIT  
 Project Number: NONE GIVEN  
 Project Location: NONE GIVEN

 Sampling Date: 11/16/2010  
 Sampling Type: Soil  
 Sampling Condition: Cool & Intact  
 Sample Received By: Jodi Henson

**Sample ID: 151 6 E (H021331-01)**

BTEX 8260B		mg/kg		Analyzed By: CMS						
Analyte	Result	Reporting Limit	Analyzed	Method Blank	BS	% Recovery	True Value QC	RPD	Qualifier	
Benzene*	<0.100	0.100	11/23/2010	ND	2.23	112	2.00	1.45		
Toluene*	<0.100	0.100	11/23/2010	ND	2.40	120	2.00	1.45		
Ethylbenzene*	<0.100	0.100	11/23/2010	ND	2.45	123	2.00	5.00		
Total Xylenes*	<0.300	0.300	11/23/2010	ND	7.73	129	6.00	4.55		

BTEX 8260B		ug/kg		Analyzed By: CMS						
Analyte	Result	Reporting Limit	Analyzed	Method Blank	BS	% Recovery	True Value QC	RPD	Qualifier	
Surrogate: Dibromofluoromethane	95.0 %	80-120								
Surrogate: Toluene-d8	88.4 %	80-120								
Surrogate: 4-Bromofluorobenzene	94.0 %	80-120								

Chloride, SM4500Cl-B		mg/kg		Analyzed By: HM						
Analyte	Result	Reporting Limit	Analyzed	Method Blank	BS	% Recovery	True Value QC	RPD	Qualifier	
Chloride	<16.0	16.0	11/20/2010	ND	400	100	400	3.92		

TPH 8015M		mg/kg		Analyzed By: AB						
Analyte	Result	Reporting Limit	Analyzed	Method Blank	BS	% Recovery	True Value QC	RPD	Qualifier	
GRO C6-C10	<10.0	10.0	11/20/2010	ND	187	93.6	200	17.3		
DRO >C10-C28	<10.0	10.0	11/20/2010	ND	152	75.8	200	1.12		

Surrogate: 1-Chlorooctane	97.0 %	70-130								
Surrogate: 1-Chlorooctadecane	98.9 %	70-130								

Cardinal Laboratories

\*=Accredited Analyte

PLEASE NOTE: Liability and Damages. Cardinal's liability and client's exclusive remedy for any claim arising, whether based in contract or tort, shall be limited to the amount paid by client for analyses. All claims, including those for negligence and any other cause whatsoever shall be deemed waived unless made in writing and received by Cardinal within thirty (30) days after completion of the applicable service. In no event shall Cardinal be liable for incidental or consequential damages, including, without limitation, business interruptions, loss of use, or loss of profits incurred by client, its subsidiaries, affiliates or successors arising out of or related to the performance of the services hereunder by Cardinal, regardless of whether such claim is based upon any of the above stated reasons or otherwise. Results relate only to the samples identified above. This report shall not be reproduced except in full with written approval of Cardinal Laboratories.



Celey D. Keene, Lab Director/Quality Manager

District I  
1625 N French Dr, Hobbs, NM 88240  
District II  
1301 W Grand Avenue, Artesia, NM 88210  
District III  
1000 Rio Brazos Road, Aztec, NM 87410  
District IV  
1220 S St Francis Dr., Santa Fe, NM 87505

State of New Mexico  
Energy Minerals and Natural Resources

Oil Conservation Division  
1220 South St. Francis Dr.  
Santa Fe, NM 87505

Form C-141  
Revised October 10, 2003

Submit 2 Copies to appropriate  
District Office in accordance  
with Rule 116 on back  
side of form

Release Notification and Corrective Action

OPERATOR

☒ Initial Report ☐ Final Report

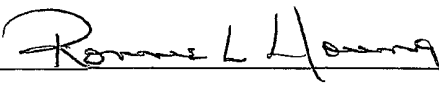
Name of Company	EnerVest Operating, LLC	Contact	Ronnie L. Young
Address	1001 Fannin St. Ste. 800 Houston, Tx. 77002	Telephone No.	713-495-6530
Facility Name	Jicarilla C #8 Tk #2	Facility Type	Gas Well - Below Grade Tank
Surface Owner	Jicarilla Indian Nation	Mineral Owner	
		Lease No.	30-039-08148

LOCATION OF RELEASE

Unit Letter	Section	Township	Range	Feet from the	North/South Line	Feet from the	East/West Line	County
E	13	26 N	05 W	1850	North	790	West	Rio Arriba

Latitude 36.488904 Longitude -107.316872

NATURE OF RELEASE

Type of Release	Volume of Release	Volume Recovered
Source of Release	Date and Hour of Occurrence	Date and Hour of Discovery
Was Immediate Notice Given? <input type="checkbox"/> Yes <input type="checkbox"/> No <input type="checkbox"/> Not Required	If YES, To Whom?	
By Whom?	Date and Hour	
Was a Watercourse Reached? <input type="checkbox"/> Yes <input type="checkbox"/> No	If YES, Volume Impacting the Watercourse.	
If a Watercourse was Impacted, Describe Fully.*		
Describe Cause of Problem and Remedial Action Taken.*  No Release - Closure of Below-Grade Tank - - - Required results of 5-spot soil sample attached		
Describe Area Affected and Cleanup Action Taken.*		
I hereby certify that the information given above is true and complete to the best of my knowledge and understand that pursuant to NMOCD rules and regulations all operators are required to report and/or file certain release notifications and perform corrective actions for releases which may endanger public health or the environment. The acceptance of a C-141 report by the NMOCD marked as "Final Report" does not relieve the operator of liability should their operations have failed to adequately investigate and remediate contamination that pose a threat to ground water, surface water, human health or the environment. In addition, NMOCD acceptance of a C-141 report does not relieve the operator of responsibility for compliance with any other federal, state, or local laws and/or regulations.		
Signature: 	OIL CONSERVATION DIVISION	
Printed Name: Ronnie L. Young	Approved by District Supervisor:	
Title: Regulatory Manager	Approval Date:	Expiration Date:
E-mail Address: ryoung@enervest.net	Conditions of Approval:	Attached <input type="checkbox"/>
Date: 5.6.11 Phone: 713-495-6530		

\* Attach Additional Sheets If Necessary

**Analytical Results For:**

ENERVEST  
LEE GARDNER  
2700 FARMINGTON BLD K SUITE #1  
FARMINGTON NM, 87401  
Fax To: NOT GIVEN

Received: 11/18/2010  
Reported: 11/24/2010  
Project Name: TAPICITO PIT  
Project Number: NONE GIVEN  
Project Location: NONE GIVEN

Sampling Date: 11/16/2010  
Sampling Type: Soil  
Sampling Condition: Cool & Intact  
Sample Received By: Jodi Henson

**Sample ID: C-8 #2 (H021331-05)**

BTX 8260B		mg/kg		Analyzed By: CMS					
Analyte	Result	Reporting Limit	Analyzed	Method Blank	BS	% Recovery	True Value QC	RPD	Qualifier
Benzene*	<0.100	0.100	11/23/2010	ND	2.23	112	2.00	1.45	
Toluene*	<0.100	0.100	11/23/2010	ND	2.40	120	2.00	1.45	
Ethylbenzene*	<0.100	0.100	11/23/2010	ND	2.45	123	2.00	5.00	
Total Xylenes*	<0.300	0.300	11/23/2010	ND	7.73	129	6.00	4.55	

BTX 8260B		ug/kg		Analyzed By: CMS					
Analyte	Result	Reporting Limit	Analyzed	Method Blank	BS	% Recovery	True Value QC	RPD	Qualifier
Surrogate Dibromofluoromethane	96.0 %	80-120							
Surrogate Toluene-d8	90.7 %	80-120							
Surrogate 4-Bromofluorobenzene	96.9 %	80-120							

Chloride, SM4500Cl-B		mg/kg		Analyzed By: HM					
Analyte	Result	Reporting Limit	Analyzed	Method Blank	BS	% Recovery	True Value QC	RPD	Qualifier
Chloride	160	16.0	11/20/2010	ND	400	100	400	3.92	


TPH 8015M		mg/kg		Analyzed By: AB					
Analyte	Result	Reporting Limit	Analyzed	Method Blank	BS	% Recovery	True Value QC	RPD	Qualifier
GRO C6-C10	<10.0	10.0	11/20/2010	ND	187	93.6	200	17.3	
DRO >C10-C28	<10.0	10.0	11/20/2010	ND	152	75.8	200	1.12	

Surrogate 1-Chlorooctane	90.3 %	70-130
Surrogate 1-Chlorooctadecane	87.9 %	70-130

Cardinal Laboratories

\*=Accredited Analyte

PLEASE NOTE: Liability and Damages. Cardinal's liability and client's exclusive remedy for any claim arising, whether based in contract or tort, shall be limited to the amount paid by client for analyses. All claims, including those for negligence and any other cause whatsoever shall be deemed waived unless made in writing and received by Cardinal within thirty (30) days after completion of the applicable service. In no event shall Cardinal be liable for incidental or consequential damages, including, without limitation, business interruptions, loss of use, or loss of profits incurred by client, its subsidiaries, affiliates or successors arising out of or related to the performance of the services hereunder by Cardinal, regardless of whether such claim is based upon any of the above stated reasons or otherwise. Results relate only to the samples identified above. This report shall not be reproduced except in full with written approval of Cardinal Laboratories.



Celey D. Keene, Lab Director/Quality Manager



## CHAIN OF CUSTODY RECORD

Page \_\_\_\_ of \_\_\_\_

Client: EMERGENCY OPERATINGContact: LEE GARDNERAddress: 2709 FARMINGTONBLOK #1 FARMINGTONPhone Number: 505 325-0312

FAX Number: \_\_\_\_\_

## NOTES:

- 1) Ensure proper container packaging.
- 2) Ship samples promptly following collection.
- 3) Designate Sample Reject Disposition.

PO# \_\_\_\_\_

Project Name: TAPICHO PT

## Table 1. - Matrix Type

- 1 = Surface Water, 2 = Ground Water  
3 = Soil/Sediment, 4 = Rinsate, 5 = Oil  
6 = Waste, 7 = Other (Specify) \_\_\_\_\_

FOR GAL USE ONLY

GAL JOB # \_\_\_\_\_

Samplers Signature: Lee Gardner

Lab Name: Green Analytical Laboratories (970) 247-4220 FAX (970) 247-4227											Analyses Required										Comments				
Address: 75 Suttle Street, Durango, CO 81303																									
Sample ID	Collection		Collected by: (Init.)	Miscellaneous			Unpreserved (Ice Only)	Preservative(s)					BTEX	TPH	CHLORIDES										
	Date	Time		Matrix Type From Table 1	No. of Containers	Sample Filtered ? Y/N			HNO3	HCL	H2SO4	NAOH									Other (Specify)				
H21331-																									
1-151GE	11/16/10	9:40	LG	3	1	A	X							X	X	X									WET CLAY
2-151-2E #1	11/16/10	11:30	LG	3	1	Z	X							X	X	X									
3-151-2E #2	11/16/10	12:13	LG	3	1	Z	X							X	X	X									
4-C-2 #1	11/16/10	1:30	LG	3	1	A	X							X	X	X									
5-C-4 #2	11/16/10	1:45	LG	3	1	Z	X							X	X	X									
6.																									
7.																									
8.																									
9.																									
10.																									
Relinquished by: <u>Lee Gardner</u>			Date: <u>11/15/10</u>		Time: <u>5:30</u>		Received by: <u>John Benson</u>										Date: <u>11/15/10</u>		Time: <u>1356</u>						
Relinquished by: _____			Date: _____		Time: _____		Received by: _____										Date: <u>11/18/10</u>		Time: <u>9:35</u>						

\* Sample Reject: [ ] Return ☒ Dispose [ ] Store (30 Days)



November 24, 2010

LEE GARDNER

ENERVEST

2700 FARMINGTON BLD K SUITE #1

FARMINGTON, NM 87401

RE: TAPICITO PIT

Enclosed are the results of analyses for samples received by the laboratory on 11/18/10 9:35.

Cardinal Laboratories is accredited through Texas NELAP for:

Method SW-846 8021	Benzene, Toluene, Ethyl Benzene, and Total Xylenes
Method SW-846 8260	Benzene, Toluene, Ethyl Benzene, and Total Xylenes
Method TX 1005	Total Petroleum Hydrocarbons

Certificate number T104704398-08-TX. Accreditation applies to solid and chemical materials and non-potable water matrices.

Cardinal Laboratories is accredited through the State of Colorado Department of Public Health and Environment for:

Method EPA 552.2	Haloacetic Acids (HAA-5)
Method EPA 524.2	Total Trihalomethanes (TTHM)
Method EPA 524.4	Regulated VOCs (V2, V3)

Accreditation applies to public drinking water matrices.

This report meets NELAP requirements and is made up of a cover page, analytical results, and a copy of the original chain-of-custody. If you have any questions concerning this report, please feel free to contact me.

Sincerely,

Celey D. Keene  
Lab Director/Quality Manager

**Notes and Definitions**

ND	Analyte NOT DETECTED at or above the reporting limit
RPD	Relative Percent Difference
**	Samples not received at proper temperature of 6°C or below.
***	Insufficient time to reach temperature.
-	Chloride by SM4500Cl-B does not require samples be received at or below 6°C
	Samples reported on an as received basis (wet) unless otherwise noted on report

---

Cardinal Laboratories

\*==Accredited Analyte

PLEASE NOTE: Liability and Damages. Cardinal's liability and client's exclusive remedy for any claim arising, whether based in contract or tort, shall be limited to the amount paid by client for analyses. All claims, including those for negligence and any other cause whatsoever shall be deemed waived unless made in writing and received by Cardinal within thirty (30) days after completion of the applicable service. In no event shall Cardinal be liable for incidental or consequential damages, including, without limitation, business interruptions, loss of use, or loss of profits incurred by client, its subsidiaries, affiliates or successors arising out of or related to the performance of the services hereunder by Cardinal, regardless of whether such claim is based upon any of the above stated reasons or otherwise. Results relate only to the samples identified above. This report shall not be reproduced except in full with written approval of Cardinal Laboratories



---

Celey D. Keene, Lab Director/Quality Manager

**Analytical Results For:**

 ENERVEST  
 LEE GARDNER  
 2700 FARMINGTON BLD K SUITE #1  
 FARMINGTON NM, 87401  
 Fax To: NOT GIVEN

 Received: 11/18/2010  
 Reported: 11/24/2010  
 Project Name: TAPICITO PIT  
 Project Number: NONE GIVEN  
 Project Location: NONE GIVEN

 Sampling Date: 11/16/2010  
 Sampling Type: Soil  
 Sampling Condition: Cool & Intact  
 Sample Received By: Jodi Henson

**Sample ID: C-8 #2 (H021331-05)**

BTEX 8260B			mg/kg		Analyzed By: CMS				
Analyte	Result	Reporting Limit	Analyzed	Method Blank	BS	% Recovery	True Value QC	RPD	Qualifier
Benzene*	<0.100	0.100	11/23/2010	ND	2.23	112	2.00	1.45	
Toluene*	<0.100	0.100	11/23/2010	ND	2.40	120	2.00	1.45	
Ethylbenzene*	<0.100	0.100	11/23/2010	ND	2.45	123	2.00	5.00	
Total Xylenes*	<0.300	0.300	11/23/2010	ND	7.73	129	6.00	4.55	

BTEX 8260B			ug/kg		Analyzed By: CMS				
Analyte	Result	Reporting Limit	Analyzed	Method Blank	BS	% Recovery	True Value QC	RPD	Qualifier
Surrogate Dibromofluoromethane	96.0 %	80-120							
Surrogate Toluene-d8	90.7 %	80-120							
Surrogate 4-Bromofluorobenzene	96.9 %	80-120							

Chloride, SM4500Cl-B			mg/kg		Analyzed By: HM				
Analyte	Result	Reporting Limit	Analyzed	Method Blank	BS	% Recovery	True Value QC	RPD	Qualifier
Chloride	160	16.0	11/20/2010	ND	400	100	400	3.92	

TPH 8015M			mg/kg		Analyzed By: AB				
Analyte	Result	Reporting Limit	Analyzed	Method Blank	BS	% Recovery	True Value QC	RPD	Qualifier
GRO C6-C10	<10.0	10.0	11/20/2010	ND	187	93.6	200	17.3	
DRO >C10-C28	<10.0	10.0	11/20/2010	ND	152	75.8	200	1.12	

Surrogate 1-Chlorooctane	90.3 %	70-130
Surrogate 1-Chlorooctadecane	87.9 %	70-130

Cardinal Laboratories

\*=Accredited Analyte

PLEASE NOTE: Liability and Damages. Cardinal's liability and client's exclusive remedy for any claim arising, whether based in contract or tort, shall be limited to the amount paid by client for analyses. All claims, including those for negligence and any other cause whatsoever shall be deemed waived unless made in writing and received by Cardinal within thirty (30) days after completion of the applicable service. In no event shall Cardinal be liable for incidental or consequential damages, including, without limitation, business interruptions, loss of use, or loss of profits incurred by client, its subsidiaries, affiliates or successors arising out of or related to the performance of the services hereunder by Cardinal, regardless of whether such claim is based upon any of the above stated reasons or otherwise. Results relate only to the samples identified above. This report shall not be reproduced except in full with written approval of Cardinal Laboratories.



Celey D. Keene, Lab Director/Quality Manager

**Notes and Definitions**

ND	Analyte NOT DETECTED at or above the reporting limit
RPD	Relative Percent Difference
**	Samples not received at proper temperature of 6°C or below.
***	Insufficient time to reach temperature.
-	Chloride by SM4500Cl-B does not require samples be received at or below 6°C Samples reported on an as received basis (wet) unless otherwise noted on report

---

**Cardinal Laboratories**

\* = Accredited Analyte

PLEASE NOTE: Liability and Damages. Cardinal's liability and client's exclusive remedy for any claim arising, whether based in contract or tort, shall be limited to the amount paid by client for analyses. All claims, including those for negligence and any other cause whatsoever shall be deemed waived unless made in writing and received by Cardinal within thirty (30) days after completion of the applicable service. In no event shall Cardinal be liable for incidental or consequential damages, including, without limitation, business interruptions, loss of use, or loss of profits incurred by client, its subsidiaries, affiliates or successors arising out of or related to the performance of the services hereunder by Cardinal, regardless of whether such claim is based upon any of the above stated reasons or otherwise. Results relate only to the samples identified above. This report shall not be reproduced except in full with written approval of Cardinal Laboratories.



---

Celey D. Keene, Lab Director/Quality Manager



# CHAIN OF CUSTODY RECORD

Page \_\_\_\_ of \_\_\_\_

Client: EMERGENCY OPERATING  
 Contact: LEE GARDNER  
 Address: 2708 FARMINGTON  
BLOK #1 FARMINGTON NH  
 Phone Number: 505 325-0312  
 FAX Number: \_\_\_\_\_

## NOTES:

- 1) Ensure proper container packaging.
- 2) Ship samples promptly following collection.
- 3) Designate Sample Reject Disposition.

PO# \_\_\_\_\_

Project Name: TAPICHO PT

Table 1. - Matrix Type	
1 = Surface Water, 2 = Ground Water	
3 = Soil/Sediment, 4 = Rinsate, 5 = Oil	
6 = Waste, 7 = Other (Specify) _____	

FOR GAL USE ONLY

GAL JOB # \_\_\_\_\_

Samplers Signature: Lee Gardner

Lab Name: Green Analytical Laboratories (970) 247-4220 FAX (970) 247-4227												Analyses Required										Comments		
Address: 75 Suttle Street, Durango, CO 81303													DREX	TPH	CALCULATIONS									
Sample ID	Date	Time	Collected by: (Init.)	Matrix Type From Table 1	No. of Containers	Sample Filtered ? Y/N	Unpreserved (Ice Only)	HNO3	HCL	H2SO4	NAOH	Other (Specify)												
H21331-																								
1- 151 EE	11/16/10	9:40	LC	3	1	N	X							X	X	X								
2- 151-2E #1	11/16/10	11:30	LC	3	1	N	X							X	X	X								
3- 151-2E #2	11/16/10	12:13	LC	3	1	N	X							X	X	X								
4- C-2 #1	11/16/10	1:30	LC	3	1	N	X							X	X	X								
5- C-2 #2	11/16/10	1:45	LC	3	1	N	X							X	X	X								
6																								
7																								
8																								
9																								
10																								
Relinquished by: <u>Lee Gardner</u>			Date: <u>11/16/10</u>			Time: <u>5:50</u>			Received by: <u>John Stenson</u>			Date: <u>11/15/10</u>			Time: <u>1356</u>									
Relinquished by: _____			Date: _____			Time: _____			Received by: _____			Date: <u>11/18/10</u>			Time: <u>9:35</u>									

\* Sample Reject [ ] Return ☒ Dispose [ ] Store (30 Days)

6°C #26

**Analytical Results For:**

ENERVEST  
LEE GARDNER  
2700 FARMINGTON BLD K SUITE #1  
FARMINGTON NM, 87401  
Fax To: NOT GIVEN

Received: 11/18/2010  
Reported: 11/24/2010  
Project Name: TAPICITO PIT  
Project Number: NONE GIVEN  
Project Location: NONE GIVEN

Sampling Date: 11/16/2010  
Sampling Type: Soil  
Sampling Condition: Cool & Intact  
Sample Received By: Jodi Henson

**Sample ID: C-8 #2 (H021331-05)**

BTEX 8260B		mg/kg		Analyzed By: CMS					
Analyte	Result	Reporting Limit	Analyzed	Method Blank	BS	% Recovery	True Value QC	RPD	Qualifier
Benzene*	<0.100	0.100	11/23/2010	ND	2.23	112	2.00	1.45	
Toluene*	<0.100	0.100	11/23/2010	ND	2.40	120	2.00	1.45	
Ethylbenzene*	<0.100	0.100	11/23/2010	ND	2.45	123	2.00	5.00	
Total Xylenes*	<0.300	0.300	11/23/2010	ND	7.73	129	6.00	4.55	

BTEX 8260B		ug/kg		Analyzed By: CMS					
Analyte	Result	Reporting Limit	Analyzed	Method Blank	BS	% Recovery	True Value QC	RPD	Qualifier
Surrogate Dibromofluoromethane	96.0 %	80-120							
Surrogate Toluene-d8	90.7 %	80-120							
Surrogate 4-Bromofluorobenzene	96.9 %	80-120							

Chloride, SM4500Cl-B		mg/kg		Analyzed By: HM					
Analyte	Result	Reporting Limit	Analyzed	Method Blank	BS	% Recovery	True Value QC	RPD	Qualifier
Chloride	160	16.0	11/20/2010	ND	400	100	400	3.92	

TPH 8015M		mg/kg		Analyzed By: AB					
Analyte	Result	Reporting Limit	Analyzed	Method Blank	BS	% Recovery	True Value QC	RPD	Qualifier
GRO C6-C10	<10.0	10.0	11/20/2010	ND	187	93.6	200	17.3	
DRO >C10-C28	<10.0	10.0	11/20/2010	ND	152	75.8	200	1.12	
Surrogate 1-Chlorooctane	90.3 %	70-130							
Surrogate 1-Chlorooctadecane	87.9 %	70-130							

Cardinal Laboratories

\*=Accredited Analyte

PLEASE NOTE: Liability and Damages: Cardinal's liability and client's exclusive remedy for any claim arising, whether based in contract or tort, shall be limited to the amount paid by client for analyses. All claims, including those for negligence and any other cause whatsoever shall be deemed waived unless made in writing and received by Cardinal within thirty (30) days after completion of the applicable service. In no event shall Cardinal be liable for incidental or consequential damages, including, without limitation, business interruptions, loss of use, or loss of profits incurred by client, its subsidiaries, affiliates or successors arising out of or related to the performance of the services hereunder by Cardinal, regardless of whether such claim is based upon any of the above stated reasons or otherwise. Results relate only to the samples identified above. This report shall not be reproduced except in full with written approval of Cardinal Laboratories.



Celey D. Keene, Lab Director/Quality Manager

**Notes and Definitions**

ND	Analyte NOT DETECTED at or above the reporting limit
RPD	Relative Percent Difference
**	Samples not received at proper temperature of 6°C or below.
***	Insufficient time to reach temperature.
-	Chloride by SM4500Cl-B does not require samples be received at or below 6°C
	Samples reported on an as received basis (wet) unless otherwise noted on report

---

Cardinal Laboratories

\* = Accredited Analyte

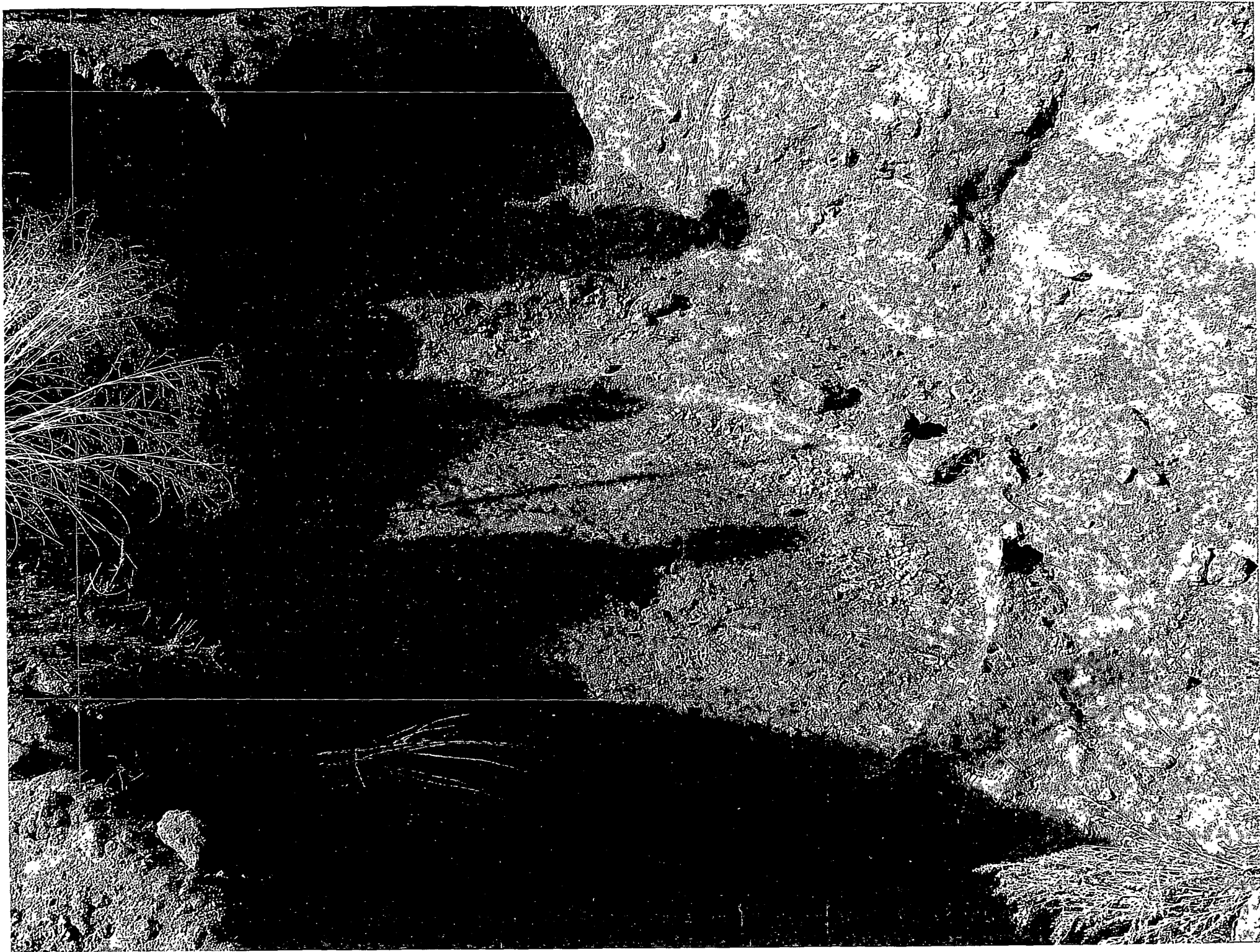
PLEASE NOTE: Liability and Damages: Cardinal's liability and client's exclusive remedy for any claim arising, whether based in contract or tort, shall be limited to the amount paid by client for analyses. All claims, including those for negligence and any other cause whatsoever shall be deemed waived unless made in writing and received by Cardinal within thirty (30) days after completion of the applicable service. In no event shall Cardinal be liable for incidental or consequential damages, including, without limitation, business interruptions, loss of use, or loss of profits incurred by client, its subsidiaries, affiliates or successors arising out of or related to the performance of the services hereunder by Cardinal, regardless of whether such claim is based upon any of the above stated reasons or otherwise. Results relate only to the samples identified above. This report shall not be reproduced except in full with written approval of Cardinal Laboratories.



---

Celey D. Keene, Lab Director/Quality Manager







RCVD MAR 5 '12  
OIL CONS. DIV.  
DIST. 3

**VIA FEDERAL EXPRESS 7981 2464 3155**

March 2, 2012

Jonathan D. Kelly  
NMOCD  
1000 Rio Brazos Drive  
Aztec, NM 87410

Re: BGT Missing Data

Dear Jonathan:

Per your email of February 15, 2012, enclosed please find the following:

- 1) Revised Detailed Closure reports listing the Soil Sample results for the following wells:

Jicarilla C8, tanks 1 and 2	30-039-08148
Jicarilla C 5M	30-039-22315
Jicarilla Apache Tribal 151 6E	30-039-23165
Jicarilla C4E	30-039-22298
Jicarilla Apache Tribal 151 1E	30-039-23171
Jicarilla Apache Tribal 151 2E	30-039-23324

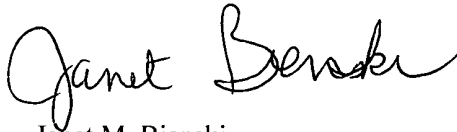
- 2) C144 Closure for Jicarilla C8, tank 2;
- 3) Due to crew availability and the opportunity to beat the weather, we failed to notify your office of the closure of tanks for JAT 151 6E and Jicarilla C8. It was an oversight on our part and steps have been taken so this does not happen again.
- 4) CLEZ amended closure forms for Jicarilla A 8M, Jic B #2M, Jic A #8N, Jic C #2N, Jicarilla Apache 102 #11 M, and Jicarilla C 3M. Originals were denied. C144 closures for these wells will be submitted early next week.

Please note that completion photos (backfill for Jicarilla C 8 and Jicarilla Apache Tribal 151 6E) will be submitted once weather conditions improve.

Mr. Jonathan Kelly  
March 2, 2012  
Page 2

Should you have any questions, please contact me at 713-495-1571. Thank you.

Sincerely,

A handwritten signature in black ink that reads "Janet Bienski". The signature is fluid and cursive, with the first name "Janet" and last name "Bienski" clearly legible.

Janet M. Bienski  
Regulatory Assistant  
EnerVest Operating, LLC

RCVD MAR 13 '12  
OIL CONS. DIV.  
DIST. 3

# ENERVEST OPERATING, LLC

JICARILLA APACHE TRIBAL 151

FEDERAL LEASE NO. 09000151

WELL NO. 6E

SW/4 SE/4 101 SEC.9-T26N-R5W

RIO ARRIBA COUNTY

## 1 PETROLEUM CRUDE OIL

### WARNING FLAMMABLE

FLAMMABLE VAPORS MAY CONTAIN  
HYDROGEN SULFIDE (H<sub>2</sub>S)  
GAS CAN BE HARMFUL OR FATAL  
CAN CAUSE SKIN IRRITATION UPON  
PROLONGED OR REPEATED CONTACT  
HARMFUL IF SWALLOWED AND/OR  
ASPIRATED INTO THE LUNGS

HANDLING  
USE PROTECTIVE EQUIPMENT  
DO NOT EAT, DRINK, OR SMOKE  
WHILE HANDLING  
WASH FACE AND HANDS  
THOROUGHLY AFTER  
HANDLING  
FOR EYES: IRRITANT  
FOR SKIN: IRRITANT  
FOR INHALATION: IRRITANT  
FOR SWALLOWING: IRRITANT

## 2 METHANE

### DANGER! EXTREMELY FLAMMABLE

VAPOR CAN BE HARMFUL OR FATAL IF  
HIGH CONCENTRATIONS ARE INHALED  
CONTACT WITH LIQUID CAUSES BURNS  
SIMILAR TO FROSTBITE

HANDLING  
USE PROTECTIVE EQUIPMENT  
DO NOT EAT, DRINK, OR SMOKE  
WHILE HANDLING  
WASH FACE AND HANDS  
THOROUGHLY AFTER  
HANDLING  
FOR EYES: IRRITANT  
FOR SKIN: IRRITANT  
FOR INHALATION: IRRITANT  
FOR SWALLOWING: IRRITANT

## 3 PRODUCED WATER

### WARNING

VAPOR MAY CONTAIN HYDROGEN  
SULFIDE (H<sub>2</sub>S) GAS  
CAN BE HARMFUL OR FATAL

HANDLING  
USE PROTECTIVE EQUIPMENT  
DO NOT EAT, DRINK, OR SMOKE  
WHILE HANDLING  
WASH FACE AND HANDS  
THOROUGHLY AFTER  
HANDLING  
FOR EYES: IRRITANT  
FOR SKIN: IRRITANT  
FOR INHALATION: IRRITANT  
FOR SWALLOWING: IRRITANT



