

District I
1625 N French Dr, Hobbs, NM 88240
District II
1301 W Grand Avenue, Artesia, NM 88210
District III
1000 Rio Brazos Road, Aztec, NM 87410
District IV
1220 S St Francis Dr, Santa Fe, NM 87505

State of New Mexico
Energy Minerals and Natural Resources
Department
Oil Conservation Division
1220 South St. Francis Dr.
Santa Fe, NM 87505

For temporary pits, closed-loop systems, and below-grade tanks, submit to the appropriate NMOCD District Office.
For permanent pits and exceptions submit to the Santa Fe Environmental Bureau office and provide a copy to the appropriate NMOCD District Office

1654

Pit, Closed-Loop System, Below-Grade Tank, or Proposed Alternative Method Permit or Closure Plan Application

Type of action: Permit of a pit, closed-loop system, below-grade tank, or proposed alternative method
 Closure of a pit, closed-loop system, below-grade tank, or proposed alternative method
Existing BGT Modification to an existing permit
 Closure plan only submitted for an existing permitted or non-permitted pit, closed-loop system, below-grade tank, or proposed alternative method

Instructions: Please submit one application (Form C-144) per individual pit, closed-loop system, below-grade tank or alternative request

Please be advised that approval of this request does not relieve the operator of liability should operations result in pollution of surface water, ground water or the environment. Nor does approval relieve the operator of its responsibility to comply with any other applicable governmental authority's rules, regulations or ordinances

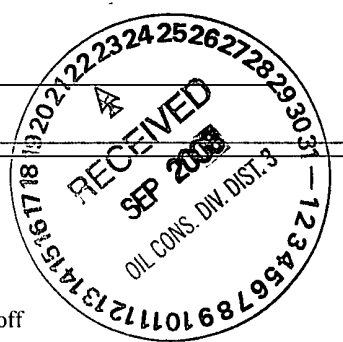
1
Operator XTO Energy, Inc. OGRID # 5380
Address 382 Road 3100 Aztec, NM 87410
Facility or well name FULLERTON FEDERAL 13#41
API Number 3004528255 OCD Permit Number _____
U/L or Qtr/Qtr A Section 13 Township 27N Range 11W County Santa Juan
Center of Proposed Design Latitude 35.57971 Longitude 107.94912 NAD 1927 1983
Surface Owner Federal State Private Tribal Trust or Indian Allotment

2.
 Pit: Subsection F or G of 19 15 17 11 NMAC
Temporary: Drilling Workover
 Permanent Emergency Cavitation P&A
 Lined Unlined Liner type Thickness _____ mil LLDPE HDPE PVC Other _____
 String-Reinforced
Liner Seams Welded Factory Other _____ Volume _____ bbl Dimensions. L _____ x W _____ x D _____

3.
 Closed-loop System: Subsection H of 19 15 17 11 NMAC
Type of Operation P&A Drilling a new well Workover or Drilling (Applies to activities which require prior approval of a permit or notice of intent)
 Drying Pad Above Ground Steel Tanks Haul-off Bins Other _____
 Lined Unlined Liner type Thickness _____ mil LLDPE HDPE PVC Other _____
Liner Seams. Welded Factory Other _____

4.
 Below-grade tank: Subsection I of 19 15 17 11 NMAC
Volume 120 bbl Type of fluid Produced Water
Tank Construction material Steel
 Secondary containment with leak detection Visible sidewalls, liner, 6-inch lift and automatic overflow shut-off
 Visible sidewalls and liner Visible sidewalls only Other Visible sidewalls, vaulted, automatic high-level shut off
Liner type: Thickness _____ mil HDPE PVC Other _____

5.
 Alternative Method:
Submittal of an exception request is required. Exceptions must be submitted to the Santa Fe Environmental Bureau office for consideration of approval



6

Fencing: Subsection D of 19.15.17.11 NMAC (*Applies to permanent pits, temporary pits, and below-grade tanks*)

- Chain link, six feet in height, two strands of barbed wire at top (*Required if located within 1000 feet of a permanent residence, school, hospital, institution or church*)
- Four foot height, four strands of barbed wire evenly spaced between one and four feet
- Alternate Please specify _____

7

Netting: Subsection E of 19.15.17.11 NMAC (*Applies to permanent pits and permanent open top tanks*)

- Screen Netting Other _____
- Monthly inspections (If netting or screening is not physically feasible)

8

Signs: Subsection C of 19.15.17.11 NMAC

- 12"x 24", 2" lettering, providing Operator's name, site location, and emergency telephone numbers
- Signed in compliance with 19.15.3.103 NMAC

9

Administrative Approvals and Exceptions:

Justifications and/or demonstrations of equivalency are required. Please refer to 19.15.17 NMAC for guidance

Please check a box if one or more of the following is requested, if not leave blank:

- Administrative approval(s) Requests must be submitted to the appropriate division district or the Santa Fe Environmental Bureau office for consideration of approval
- Exception(s) Requests must be submitted to the Santa Fe Environmental Bureau office for consideration of approval

10

Siting Criteria (regarding permitting): 19.15.17.10 NMAC

Instructions: The applicant must demonstrate compliance for each siting criteria below in the application. Recommendations of acceptable source material are provided below. Requests regarding changes to certain siting criteria may require administrative approval from the appropriate district office or may be considered an exception which must be submitted to the Santa Fe Environmental Bureau office for consideration of approval. Applicant must attach justification for request. Please refer to 19.15.17.10 NMAC for guidance. Siting criteria does not apply to drying pads or above-grade tanks associated with a closed-loop system.

- | | |
|--|--|
| <p>Ground water is less than 50 feet below the bottom of the temporary pit, permanent pit, or below-grade tank</p> <ul style="list-style-type: none"> - NM Office of the State Engineer - iWATERS database search, USGS, Data obtained from nearby wells | <input type="checkbox"/> Yes <input checked="" type="checkbox"/> No |
| <p>Within 300 feet of a continuously flowing watercourse, or 200 feet of any other significant watercourse or lakebed, sinkhole, or playa lake (measured from the ordinary high-water mark)</p> <ul style="list-style-type: none"> - Topographic map, Visual inspection (certification) of the proposed site | <input type="checkbox"/> Yes <input checked="" type="checkbox"/> No |
| <p>Within 300 feet from a permanent residence, school, hospital, institution, or church in existence at the time of initial application (<i>Applies to temporary, emergency, or cavitation pits and below-grade tanks</i>)</p> <ul style="list-style-type: none"> - Visual inspection (certification) of the proposed site, Aerial photo, Satellite image | <input type="checkbox"/> Yes <input checked="" type="checkbox"/> No
<input type="checkbox"/> NA |
| <p>Within 1000 feet from a permanent residence, school, hospital, institution, or church in existence at the time of initial application (<i>Applies to permanent pits</i>)</p> <ul style="list-style-type: none"> - Visual inspection (certification) of the proposed site; Aerial photo, Satellite image | <input type="checkbox"/> Yes <input type="checkbox"/> No
<input checked="" type="checkbox"/> NA |
| <p>Within 500 horizontal feet of a private, domestic fresh water well or spring that less than five households use for domestic or stock watering purposes, or within 1000 horizontal feet of any other fresh water well or spring, in existence at the time of initial application.</p> <ul style="list-style-type: none"> - NM Office of the State Engineer - iWATERS database search, Visual inspection (certification) of the proposed site | <input type="checkbox"/> Yes <input checked="" type="checkbox"/> No |
| <p>Within incorporated municipal boundaries or within a defined municipal fresh water well field covered under a municipal ordinance adopted pursuant to NMSA 1978, Section 3-27-3, as amended.</p> <ul style="list-style-type: none"> - Written confirmation or verification from the municipality; Written approval obtained from the municipality | <input type="checkbox"/> Yes <input checked="" type="checkbox"/> No |
| <p>Within 500 feet of a wetland.</p> <ul style="list-style-type: none"> - US Fish and Wildlife Wetland Identification map; Topographic map, Visual inspection (certification) of the proposed site | <input type="checkbox"/> Yes <input checked="" type="checkbox"/> No |
| <p>Within the area overlying a subsurface mine.</p> <ul style="list-style-type: none"> - Written confirmation or verification or map from the NM EMNRD-Mining and Mineral Division | <input type="checkbox"/> Yes <input checked="" type="checkbox"/> No |
| <p>Within an unstable area</p> <ul style="list-style-type: none"> - Engineering measures incorporated into the design, NM Bureau of Geology & Mineral Resources; USGS, NM Geological Society, Topographic map | <input type="checkbox"/> Yes <input checked="" type="checkbox"/> No |
| <p>Within a 100-year floodplain.</p> <ul style="list-style-type: none"> - FEMA map | <input type="checkbox"/> Yes <input checked="" type="checkbox"/> No |

11

Temporary Pits, Emergency Pits, and Below-grade Tanks Permit Application Attachment Checklist: Subsection B of 19 15 17 9 NMAC**Instructions:** Each of the following items must be attached to the application. Please indicate, by a check mark in the box, that the documents are attached.

- Hydrogeologic Report (Below-grade Tanks) - based upon the requirements of Paragraph (4) of Subsection B of 19 15 17 9 NMAC
- Hydrogeologic Data (Temporary and Emergency Pits) - based upon the requirements of Paragraph (2) of Subsection B of 19 15 17 9 NMAC
- Siting Criteria Compliance Demonstrations - based upon the appropriate requirements of 19.15 17 10 NMAC
- Design Plan - based upon the appropriate requirements of 19 15.17 11 NMAC
- Operating and Maintenance Plan - based upon the appropriate requirements of 19 15.17 12 NMAC
- Closure Plan (Please complete Boxes 14 through 18, if applicable) - based upon the appropriate requirements of Subsection C of 19.15 17 9 NMAC and 19 15.17.13 NMAC
- Previously Approved Design (attach copy of design) API Number _____ or Permit Number _____

12

Closed-loop Systems Permit Application Attachment Checklist: Subsection B of 19 15 17 9 NMAC**Instructions:** Each of the following items must be attached to the application. Please indicate, by a check mark in the box, that the documents are attached.

- Geologic and Hydrogeologic Data (only for on-site closure) - based upon the requirements of Paragraph (3) of Subsection B of 19 15 17 9
- Siting Criteria Compliance Demonstrations (only for on-site closure) - based upon the appropriate requirements of 19 15 17 10 NMAC
- Design Plan - based upon the appropriate requirements of 19 15 17 11 NMAC
- Operating and Maintenance Plan - based upon the appropriate requirements of 19 15 17 12 NMAC
- Closure Plan (Please complete Boxes 14 through 18, if applicable) - based upon the appropriate requirements of Subsection C of 19 15 17.9 NMAC and 19 15 17 13 NMAC
- Previously Approved Design (attach copy of design) API Number _____
- Previously Approved Operating and Maintenance Plan API Number _____ (Applies only to closed-loop system that use above ground steel tanks or haul-off bins and propose to implement waste removal for closure)

13

Permanent Pits Permit Application Checklist: Subsection B of 19 15 17 9 NMAC**Instructions:** Each of the following items must be attached to the application. Please indicate, by a check mark in the box, that the documents are attached.

- Hydrogeologic Report - based upon the requirements of Paragraph (1) of Subsection B of 19 15 17 9 NMAC
- Siting Criteria Compliance Demonstrations - based upon the appropriate requirements of 19 15.17 10 NMAC
- Climatological Factors Assessment
- Certified Engineering Design Plans - based upon the appropriate requirements of 19 15 17 11 NMAC
- Dike Protection and Structural Integrity Design - based upon the appropriate requirements of 19 15 17 11 NMAC
- Leak Detection Design - based upon the appropriate requirements of 19 15 17 11 NMAC
- Liner Specifications and Compatibility Assessment - based upon the appropriate requirements of 19 15 17 11 NMAC
- Quality Control/Quality Assurance Construction and Installation Plan
- Operating and Maintenance Plan - based upon the appropriate requirements of 19.15 17 12 NMAC
- Freeboard and Overtopping Prevention Plan - based upon the appropriate requirements of 19 15 17 11 NMAC
- Nuisance or Hazardous Odors, including H₂S, Prevention Plan
- Emergency Response Plan
- Oil Field Waste Stream Characterization
- Monitoring and Inspection Plan
- Erosion Control Plan
- Closure Plan - based upon the appropriate requirements of Subsection C of 19 15 17 9 NMAC and 19 15 17 13 NMAC

14

Proposed Closure: 19 15 17 13 NMAC**Instructions:** Please complete the applicable boxes, Boxes 14 through 18, in regards to the proposed closure plan.

- Type Drilling Workover Emergency Cavitation P&A Permanent Pit Below-grade Tank Closed-loop System
- Alternative
- Proposed Closure Method: Waste Excavation and Removal
- Waste Removal (Closed-loop systems only)
- On-site Closure Method (Only for temporary pits and closed-loop systems)
- In-place Burial On-site Trench Burial
- Alternative Closure Method (Exceptions must be submitted to the Santa Fe Environmental Bureau for consideration)

15.

Waste Excavation and Removal Closure Plan Checklist: (19 15.17 13 NMAC) **Instructions:** Each of the following items must be attached to the closure plan. Please indicate, by a check mark in the box, that the documents are attached.

- Protocols and Procedures - based upon the appropriate requirements of 19 15.17.13 NMAC
- Confirmation Sampling Plan (if applicable) - based upon the appropriate requirements of Subsection F of 19 15 17 13 NMAC
- Disposal Facility Name and Permit Number (for liquids, drilling fluids and drill cuttings)
- Soil Backfill and Cover Design Specifications - based upon the appropriate requirements of Subsection H of 19 15.17 13 NMAC
- Re-vegetation Plan - based upon the appropriate requirements of Subsection I of 19 15 17 13 NMAC
- Site Reclamation Plan - based upon the appropriate requirements of Subsection G of 19 15 17 13 NMAC

16

Waste Removal Closure For Closed-loop Systems That Utilize Above Ground Steel Tanks or Haul-off Bins Only: (19 15 17 13 D NMAC)

Instructions: Please indentify the facility or facilities for the disposal of liquids, drilling fluids and drill cuttings. Use attachment if more than two facilities are required.

Disposal Facility Name _____ Disposal Facility Permit Number _____

Disposal Facility Name _____ Disposal Facility Permit Number _____

Will any of the proposed closed-loop system operations and associated activities occur on or in areas that *will not* be used for future service and operations?
 Yes (If yes, please provide the information below) No

Required for impacted areas which will not be used for future service and operations

- Soil Backfill and Cover Design Specifications - based upon the appropriate requirements of Subsection H of 19 15 17 13 NMAC
- Re-vegetation Plan - based upon the appropriate requirements of Subsection I of 19 15 17.13 NMAC
- Site Reclamation Plan - based upon the appropriate requirements of Subsection G of 19 15 17 13 NMAC

17

Siting Criteria (regarding on-site closure methods only): 19 15 17 10 NMAC

Instructions: Each siting criteria requires a demonstration of compliance in the closure plan. Recommendations of acceptable source material are provided below. Requests regarding changes to certain siting criteria may require administrative approval from the appropriate district office or may be considered an exception which must be submitted to the Santa Fe Environmental Bureau office for consideration of approval. Justifications and/or demonstrations of equivalency are required. Please refer to 19.15.17.10 NMAC for guidance.

- | | |
|--|---|
| Ground water is less than 50 feet below the bottom of the buried waste
- NM Office of the State Engineer - iWATERS database search; USGS, Data obtained from nearby wells | <input type="checkbox"/> Yes <input type="checkbox"/> No
<input type="checkbox"/> NA |
| Ground water is between 50 and 100 feet below the bottom of the buried waste
- NM Office of the State Engineer - iWATERS database search; USGS; Data obtained from nearby wells | <input type="checkbox"/> Yes <input type="checkbox"/> No
<input type="checkbox"/> NA |
| Ground water is more than 100 feet below the bottom of the buried waste
- NM Office of the State Engineer - iWATERS database search, USGS, Data obtained from nearby wells | <input type="checkbox"/> Yes <input type="checkbox"/> No
<input type="checkbox"/> NA |
| Within 300 feet of a continuously flowing watercourse, or 200 feet of any other significant watercourse or lakebed, sinkhole, or playa lake (measured from the ordinary high-water mark)
- Topographic map, Visual inspection (certification) of the proposed site | <input type="checkbox"/> Yes <input type="checkbox"/> No |
| Within 300 feet from a permanent residence, school, hospital, institution, or church in existence at the time of initial application
- Visual inspection (certification) of the proposed site, Aerial photo, Satellite image | <input type="checkbox"/> Yes <input type="checkbox"/> No |
| Within 500 horizontal feet of a private, domestic fresh water well or spring that less than five households use for domestic or stock watering purposes, or within 1000 horizontal feet of any other fresh water well or spring, in existence at the time of initial application
- NM Office of the State Engineer - iWATERS database, Visual inspection (certification) of the proposed site | <input type="checkbox"/> Yes <input type="checkbox"/> No |
| Within incorporated municipal boundaries or within a defined municipal fresh water well field covered under a municipal ordinance adopted pursuant to NMSA 1978, Section 3-27-3, as amended.
- Written confirmation or verification from the municipality, Written approval obtained from the municipality | <input type="checkbox"/> Yes <input type="checkbox"/> No |
| Within 500 feet of a wetland
- US Fish and Wildlife Wetland Identification map, Topographic map, Visual inspection (certification) of the proposed site | <input type="checkbox"/> Yes <input type="checkbox"/> No |
| Within the area overlying a subsurface mine.
- Written confirmation or verification or map from the NM EMNRD-Mining and Mineral Division | <input type="checkbox"/> Yes <input type="checkbox"/> No |
| Within an unstable area
- Engineering measures incorporated into the design, NM Bureau of Geology & Mineral Resources, USGS, NM Geological Society; Topographic map | <input type="checkbox"/> Yes <input type="checkbox"/> No |
| Within a 100-year floodplam
- FEMA map | <input type="checkbox"/> Yes <input type="checkbox"/> No |

18

On-Site Closure Plan Checklist: (19 15 17 13 NMAC) *Instructions: Each of the following items must be attached to the closure plan. Please indicate, by a check mark in the box, that the documents are attached.*

- Siting Criteria Compliance Demonstrations - based upon the appropriate requirements of 19 15 17 10 NMAC
- Proof of Surface Owner Notice - based upon the appropriate requirements of Subsection F of 19 15 17 13 NMAC
- Construction/Design Plan of Burial Trench (if applicable) based upon the appropriate requirements of 19 15.17 11 NMAC
- Construction/Design Plan of Temporary Pit (for in-place burial of a drying pad) - based upon the appropriate requirements of 19.15 17 11 NMAC
- Protocols and Procedures - based upon the appropriate requirements of 19 15 17.13 NMAC
- Confirmation Sampling Plan (if applicable) - based upon the appropriate requirements of Subsection F of 19 15 17.13 NMAC
- Waste Material Sampling Plan - based upon the appropriate requirements of Subsection F of 19.15 17 13 NMAC
- Disposal Facility Name and Permit Number (for liquids, drilling fluids and drill cuttings or in case on-site closure standards cannot be achieved)
- Soil Cover Design - based upon the appropriate requirements of Subsection H of 19 15 17 13 NMAC
- Re-vegetation Plan - based upon the appropriate requirements of Subsection I of 19 15 17.13 NMAC
- Site Reclamation Plan - based upon the appropriate requirements of Subsection G of 19 15 17 13 NMAC

19

Operator Application Certification:

I hereby certify that the information submitted with this application is true, accurate and complete to the best of my knowledge and belief

Name (Print). Kim Champlin Title: Environmental Representative
Signature: Kim Champlin Date 9-12-08
e-mail address kim_champlin@xtoenergy.com Telephone (505) 333-3100

20

OCD Approval: Permit Application (including closure plan) Closure Plan (only) OCD Conditions (see attachment)

OCD Representative Signature: Jonathan D. Kelly Approval Date: 3/19/2012
Title: Compliance Officer OCD Permit Number: _____

21

Closure Report (required within 60 days of closure completion): Subsection K of 19 15 17 13 NMAC

Instructions: Operators are required to obtain an approved closure plan prior to implementing any closure activities and submitting the closure report. The closure report is required to be submitted to the division within 60 days of the completion of the closure activities. Please do not complete this section of the form until an approved closure plan has been obtained and the closure activities have been completed.

Closure Completion Date: _____

22

Closure Method:

Waste Excavation and Removal On-Site Closure Method Alternative Closure Method Waste Removal (Closed-loop systems only)
 If different from approved plan, please explain.

23

Closure Report Regarding Waste Removal Closure For Closed-loop Systems That Utilize Above Ground Steel Tanks or Haul-off Bins Only:

Instructions: Please identify the facility or facilities for where the liquids, drilling fluids and drill cuttings were disposed. Use attachment if more than two facilities were utilized.

Disposal Facility Name: _____ Disposal Facility Permit Number: _____

Disposal Facility Name _____ Disposal Facility Permit Number _____

Were the closed-loop system operations and associated activities performed on or in areas that *will not* be used for future service and operations?

Yes (If yes, please demonstrate compliance to the items below) No

Required for impacted areas which will not be used for future service and operations

- Site Reclamation (Photo Documentation)
- Soil Backfilling and Cover Installation
- Re-vegetation Application Rates and Seeding Technique

24

Closure Report Attachment Checklist: *Instructions: Each of the following items must be attached to the closure report. Please indicate, by a check mark in the box, that the documents are attached.*

- Proof of Closure Notice (surface owner and division)
- Proof of Deed Notice (required for on-site closure)
- Plot Plan (for on-site closures and temporary pits)
- Confirmation Sampling Analytical Results (if applicable)
- Waste Material Sampling Analytical Results (required for on-site closure)
- Disposal Facility Name and Permit Number
- Soil Backfilling and Cover Installation
- Re-vegetation Application Rates and Seeding Technique
- Site Reclamation (Photo Documentation)

On-site Closure Location. Latitude _____ Longitude _____ NAD: 1927 1983

25

Operator Closure Certification:

I hereby certify that the information and attachments submitted with this closure report is true, accurate and complete to the best of my knowledge and belief. I also certify that the closure complies with all applicable closure requirements and conditions specified in the approved closure plan.

Name (Print). _____ Title _____

Signature. _____ Date. _____

e-mail address _____ Telephone _____

Submit to Appropriate District Office
 State Lease - 4 copies
 Fee Lease - 3 copies

State of New Mexico
 Energy, Minerals and Natural Resources Department

Form C-102
 Revised 1-1-89

OIL CONSERVATION DIVISION

P.O. Box 2088
 Santa Fe, New Mexico 87504-2088

DISTRICT I
 P.O. Box 1980, Hobbs, NM 88240

DISTRICT II
 P.O. Drawer DD, Artesia, NM 88210

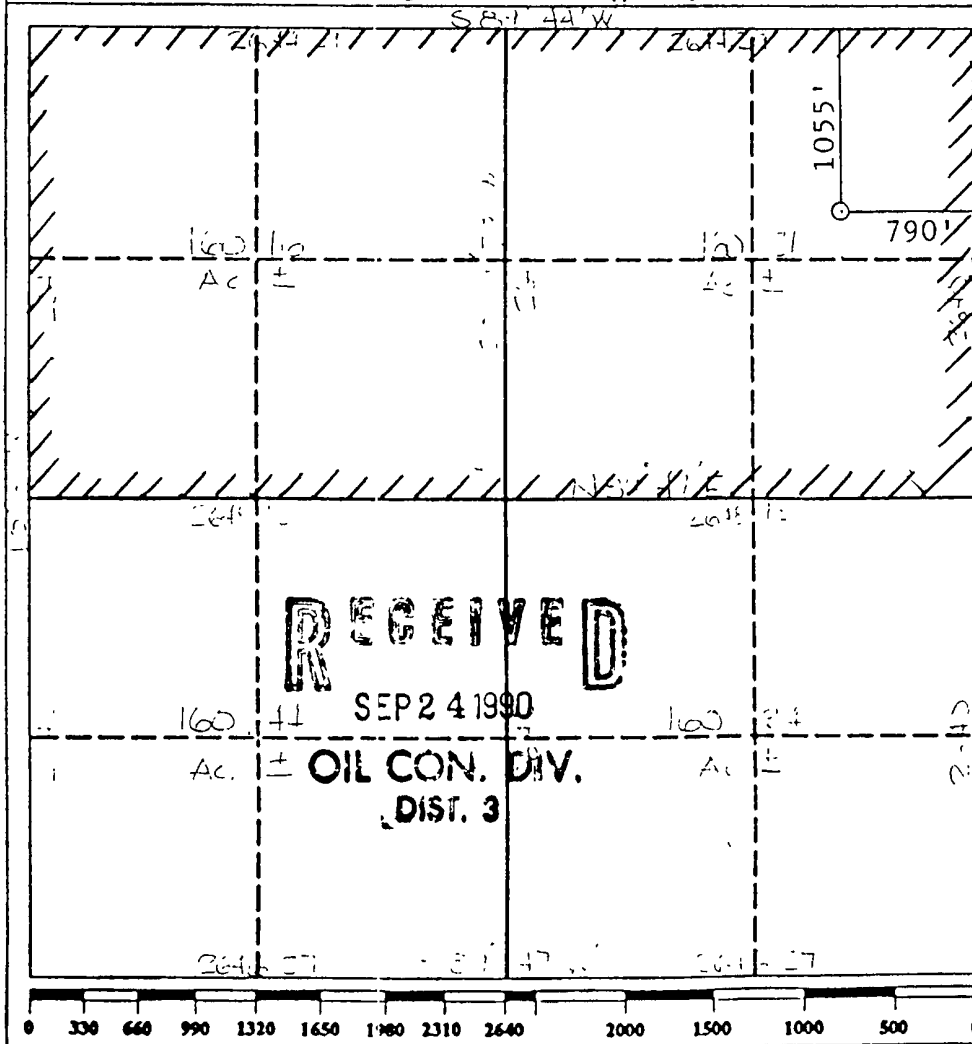
DISTRICT III
 1000 Rio Brazos Rd., Aztec, NM 87410

WELL LOCATION AND ACREAGE DEDICATION PLAT

All Distances must be from the outer boundaries of the section

Operator BONNEVILLE FUELS CORP.			Lease Fullerton SCOTT FEDERAL 13		Well No 13-41
Unit Letter A	Section 13	Township 27N	Range 11W	County NMPM SAN JUAN	
Actual Footage Location of Well: 1055 feet from the NORTH line and 790 feet from the EAST line					
Ground level Elev. 6028	Producing Formation			Pool <i>Huachuca</i>	Dedicated Acreage: Acres

- Outline the acreage dedicated to the subject well by colored pencil or hatchure marks on the plat below.
- If more than one lease is dedicated to the well, outline each and identify the ownership thereof (both as to working interest and royalty).
- If more than one lease of different ownership is dedicated to the well, have the interest of all owners been consolidated by communitization, unitization, force-pooling, etc?
 - Yes No If answer is "yes" type of consolidation _____
 If answer is "no" list the owners and tract descriptions which have actually been consolidated. (Use reverse side of this form if necessary.)
 No allowable will be assigned to the well until all interests have been consolidated (by communitization, unitization, forced-pooling, or otherwise) or until a non-standard unit, eliminating such interest, has been approved by the Division.



OPERATOR CERTIFICATION
 I hereby certify that the information contained herein is true and complete to the best of my knowledge and belief.

Signature: *Gerald D. Gentry*
 Printed Name: **Gerald D. Gentry**
 Position: **Operations Supervisor**
 Company: **Bonneville Fuels Corp.**
 Date: **August 20, 1990**

SURVEYOR CERTIFICATION
 I hereby certify that the well location shown on this plat was plotted from field notes of actual surveys made by me or under my supervision, and that the same is true and correct to the best of my knowledge and belief.

Date Surv: **August 20, 1990**
 Signature: *Cecil D. Fuller*
 Professional Surveyor
REGISTERED PROFESSIONAL LAND SURVEYOR
NEW MEXICO
9672
 Cecil D. Fuller
 Certificate No. **9672**



**Pit Permit
Siting Criteria
Information Sheet**

Client:	XTO Energy
Project:	Pit Permits
Revised:	10-Sep-08
Prepared by:	Devin Hencmann

API#: 3004528255

USPLSS: 27N, 11W, 13A

Name: FULLERTON FEDERAL #41

Lat/Long: 36.57971/-107.94912

Depth to groundwater: >100'

Geologic formation: Nacimiento

Distance to closest continuously flowing watercourse: 8.5 miles N to the 'San Juan River'

Distance to closest significant watercourse, lakebed, playa lake, or sinkhole: 2,550' NE to Kutz Canyon wash

Permanent residence, school, hospital, institution or church within 300': No

Soil Type: Entisols

Domestic fresh water well or spring within 500': No

Annual Precipitation: Bloomfield: 8.71", Farmington 8.21", Otis 10.41"

Any other fresh water well or spring within 1000': No

Precipitation Notes: Historical daily max: Bloomfield (4.19")

Within incorporated municipal boundaries: No

Attached Documents: 27N 11W I-Waters pdf, 27N 12W I-Waters pdf

Within defined municipal fresh water well field: No

Topo map pdf, Aerial pdf, Mines and Quarries Map pdf, I-Waters Ground Water Data Map pdf, FEMA flood zone map pdf

Wetland within 500': No

Mining Activity: None

Within unstable area: No

Within 100 year flood plain: No-FEMA Zone 'X'

Additional Notes:

FULLERTON FEDERAL 13 #41 Below Ground Tank Hydrogeologic Report for Siting Criteria

General Geology and Hydrology

The San Juan Basin is a typical Rocky Mountain basin with a gently dipping southern flank and a steeply dipping northern flank. Asymmetrically layered Tertiary sandstones and shales, along with Quaternary alluvial deposits, dominate surficial geology (Dane and Bachman, 1965). The proposed pit location will be located in the southernmost Kutz Canyon region of the San Juan Basin. The predominant geologic formation is the Nacimiento Formation of Tertiary age, which underlies surface soils and is often exposed (Dane and Bachman, 1965). Deposits of Quaternary alluvial and aeolian sands occur prominently near the surface of the area, especially near streams and washes.

Cretaceous and Tertiary sandstones, as well as Quaternary alluvial deposits serve as the primary aquifers in the San Juan basin (Stone et al., 1983). In most of the proposed area, the Nacimiento Formation lies at the surface and grades into the Animas Formation to the west. Thickness of the Nacimiento ranges from 418 to 2232 feet (Stone et al., 1983). Aquifers within the coarser and continuous sandstone bodies of the Nacimiento Formation are between 0 and 1000' deep in this section of the basin (Stone et al., 1983). Groundwater within these aquifers flows toward the San Juan River.

The prominent soil type at the proposed site are entisols and aridisols, which are defined as soils that exhibit little to no any profile development (www.emnrd.state.nm.us). Soils are basically unaltered from their parent rock. Miles of arroyos, washes and intermittent streams exist as part of the drainage network towards the San Juan River. These features often cut into soil and other unconsolidated materials, contributing to sedimentation downstream. The sudden influx of water from storm events easily erodes the soils that cover the area. The sudden influx of water from storm events easily erodes the soils that cover the area and prohibits effective recharge to the underlying aquifers.

Dry and arid weather further prohibit active recharge. The climate of the region is arid, averaging 8 to 12 inches of rainfall annually. As is typical of the southwestern United States monsoonal weather patterns, most precipitation falls from August through October. The heaviest rainfall occurs in the summer in isolated, intense cloudbursts. November through June is relatively dry. Snow generally falls from December to mid-February and averages less than one-half inch in depth. However, most recharge occurs during the winter months during snowmelt periods from the upper elevations (Western Regional Climate Center www.wrcc.dri.edu).

The predominant vegetation is sagebrush and grasses with a more restricted pinon-juniper association (Dick-Peddie, 1993). However, vegetation is very sparse and discontinuous.

Site Specific Hydrogeology

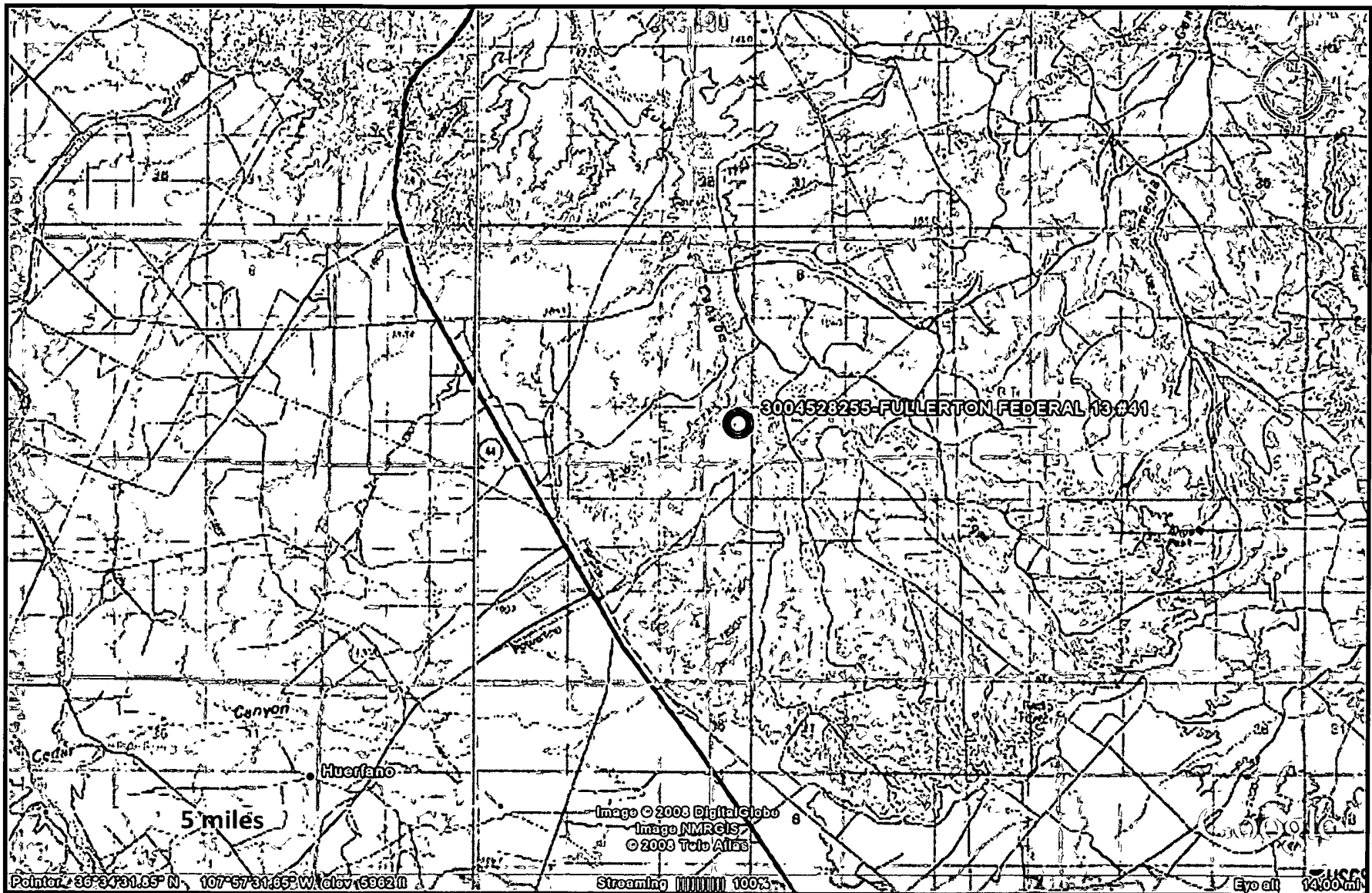
Depth to groundwater is estimated to be **between 50 and 100'**. This estimation is based on data from Stone and others (1983), the USGS Groundwater Atlas of the United States and depth to groundwater data published on the New Mexico State Engineer's iWaters Database website. Local topography and proximity to surface hydrologic features are also taken into consideration.

Beds of water-yielding sandstone are present in the Nacimiento Formation, which are fluvial in origin and are interbedded with siltstone, shale and coal. Porous sandstones form the principal aquifers, while relatively impermeable shales form confining units between the aquifers (Stone et al., 1983). Local aquifers exist within the Nacimiento Formation at depths greater than 100 feet and thicknesses of the aquifer can be up to 3500 feet (USGS, Groundwater Atlas of the US).

The site in question is located near the edge of Kutz Canyon, where deeply eroded sandstone-capped mesas and slope-forming mudstones occur in a sparsely vegetated and arid badlands-type setting. Broad shaley hills are interspersed with occasional sandstone outcrops, and systems of dry washes and their tributaries are evident on the attached aerial image.

The pit will be located on a relatively flat mesa top at an elevation of approximately 6040 feet near the head of Kutz Wash. It will be approximately 180 feet from the Kutz Canyon tributary system and 2550 feet southwest of Kutz Wash. Groundwater is expected to be shallow within Kutz Wash. But the distance between the Canyon and the site, as well as an elevation difference of almost 300 feet suggest groundwater is greater than 100 feet at the proposed site.

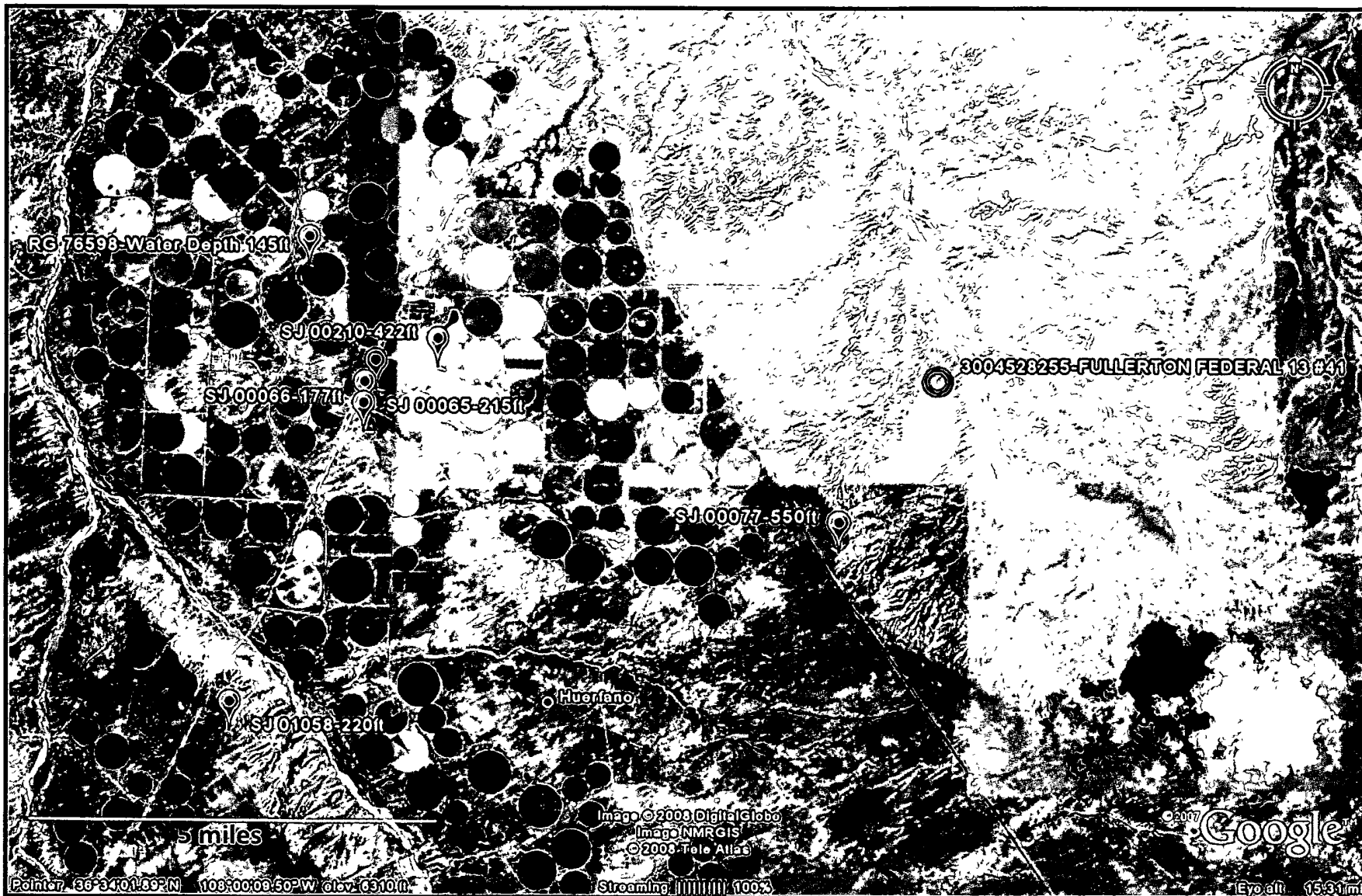
State iWaters data points are sparsely distributed in this region, but there is an iWaters data point approximately 2.2 miles to the southwest of the site. Depth to groundwater at the site is 550 feet. A map showing the location of wells in reference to the proposed pit location is attached (SJ00077).



Lodestar Services, Inc
 PO Box 4465
 Durango, CO 81302

FULLERTON FEDERAL 13 #41
 T27N, R11W, S13A
 San Juan county, NM

TOPOGRAPHIC MAP



<p>Lodestar Services, Inc PO Box 4465 Durango, CO 81302</p>	<p>FULLERTON FEDERAL 13 #41 T27N, R11W, S13A San Juan county, NM</p>	<p>i-Waters Ground Water Data Map</p>
---	--	--

New Mexico Office of the State Engineer
POD Reports and Downloads

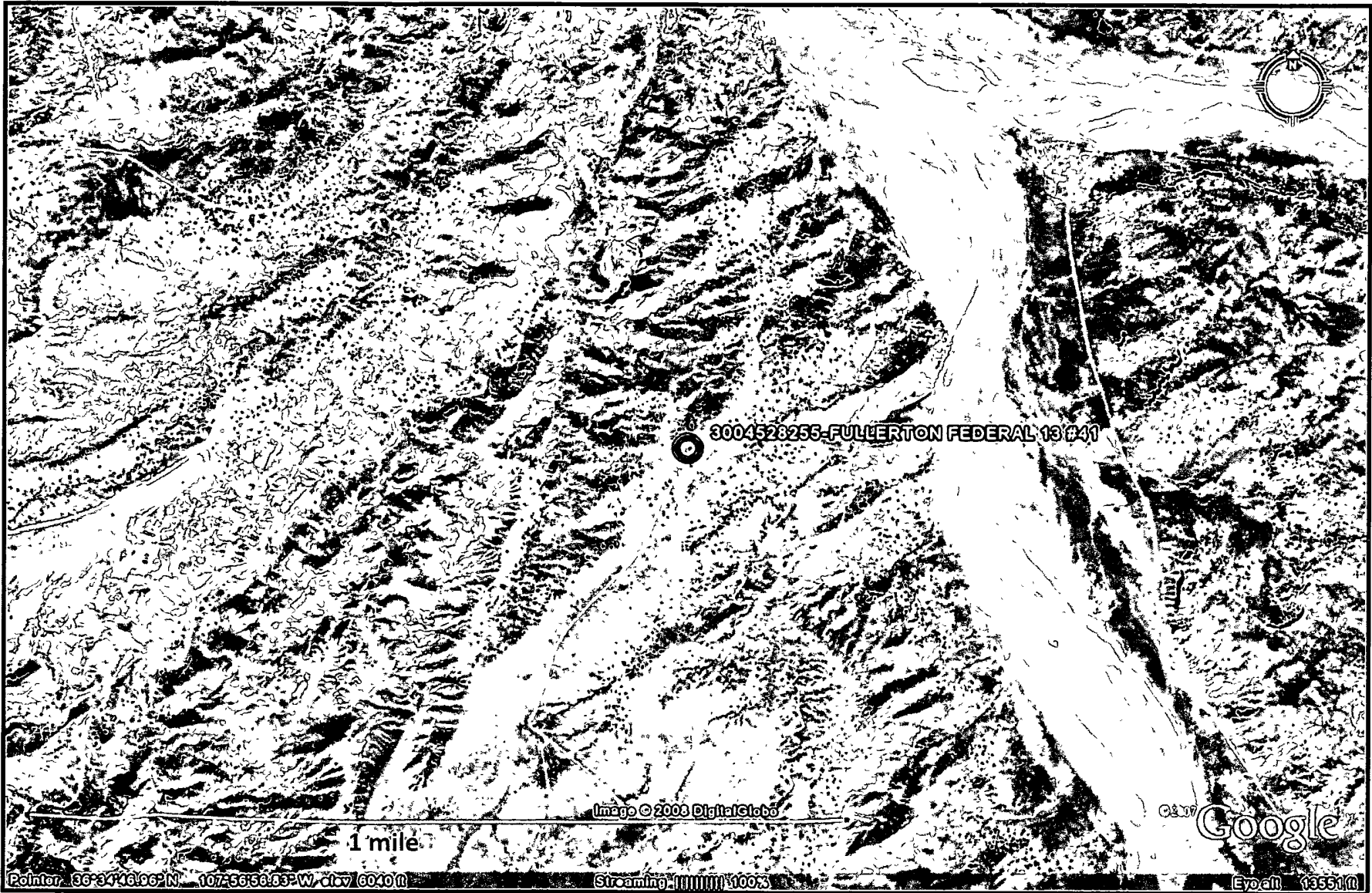
POD / Surface Data Report Avg Depth to Water Report Water Column Report

WATER COLUMN REPORT 03/22/2006

(quarters are 1=NW 2=NE 3=SW 4=SE)
(quarters are biggest to smallest)

POD Number	Tws	Rng	Sec	q	q	q	Zone	X	Y	Depth Well	Depth Water	Water (in feet) Column
<u>SJ 01787</u>	27N	11W	07	2	2					550		
<u>SJ 00077</u>	27N	11W	26	2	1	3				1102	550	552

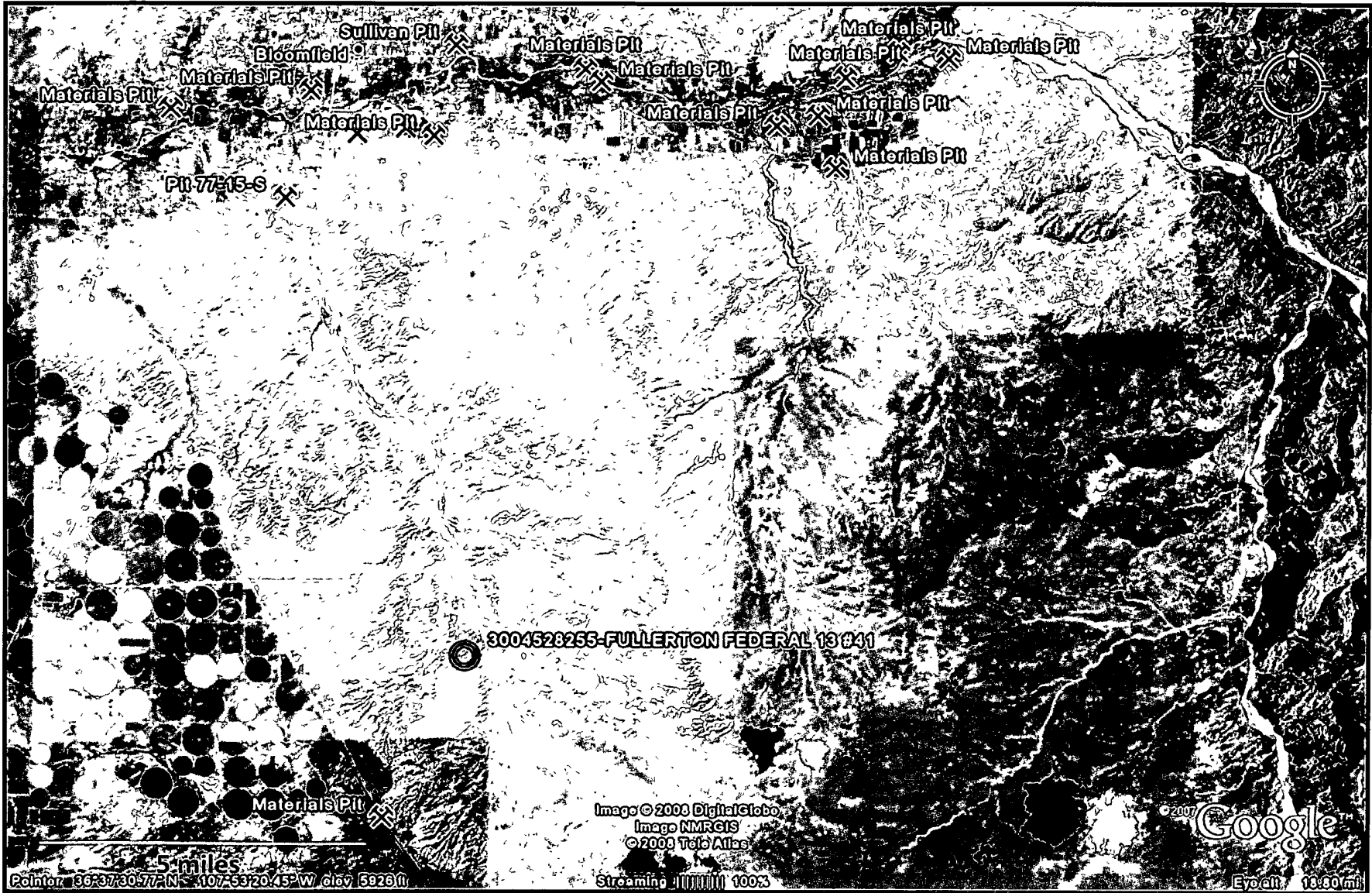
Record Count: 2



Lodestar Services, Inc
PO Box 4465
Durango, CO 81302

FULLERTON FEDERAL 13 #41
T27N, R11W, S13A
San Juan county, NM

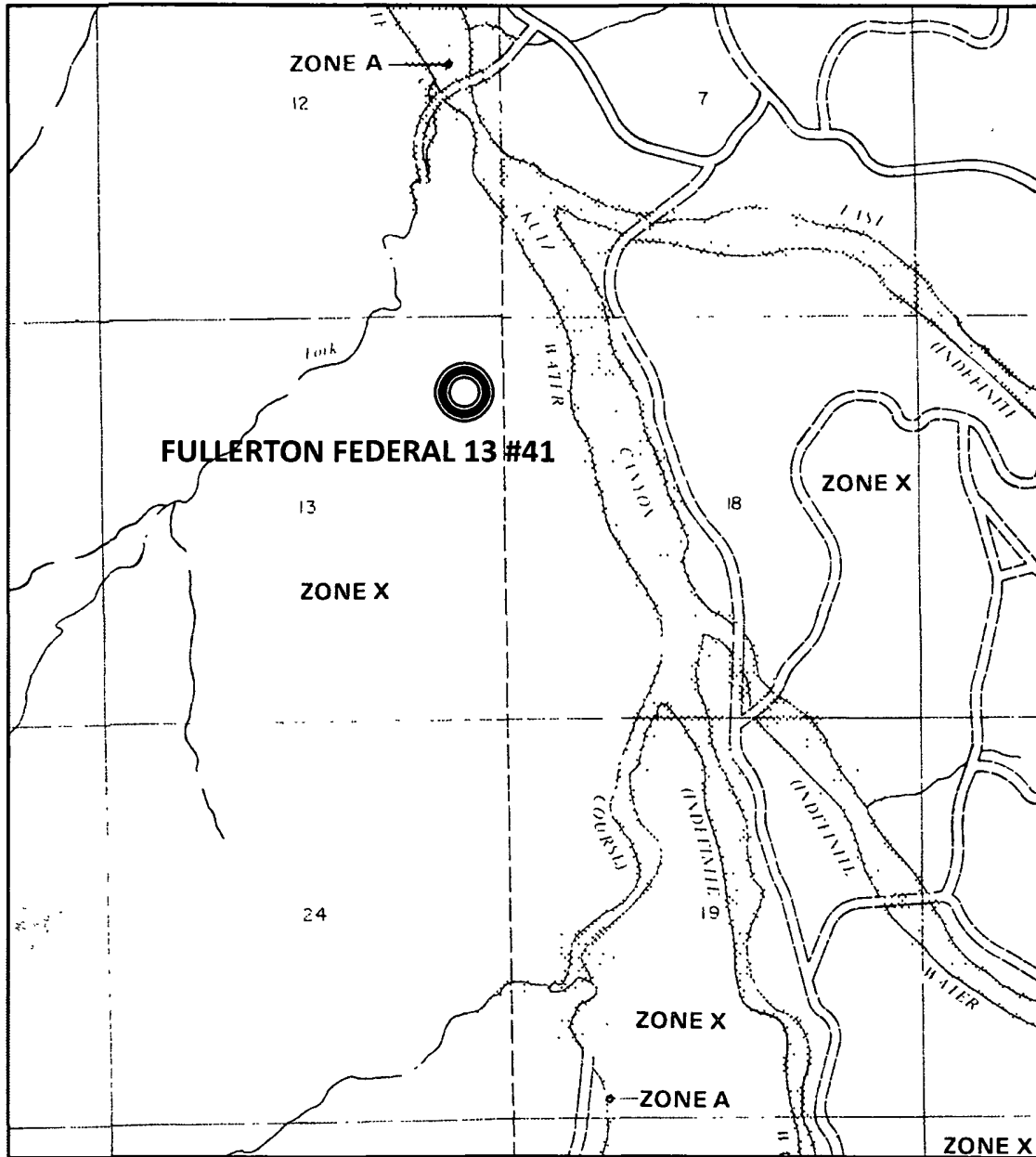
AERIAL PHOTOGRAPH



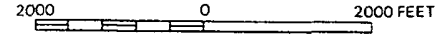
Lodestar Services, Inc
PO Box 4465
Durango, CO 81302

FULLERTON FEDERAL 13 #41
T27N, R11W, S13A
San Juan county, NM

Mines and Quarries Map



APPROXIMATE SCALE



LEGEND

SPECIAL FLOOD HAZARD AREAS INUNDATED BY 100 YEAR FLOOD

- ZONE A** No base flood elevations determined
- ZONE AE** Base flood elevations determined
- ZONE AH** Flood depths of 1 to 3 feet (usually areas of ponding), base flood elevations determined
- ZONE AO** Flood depths of 1 to 3 feet (usually sheet flow on sloping terrain), average depths determined. For areas of alluvial fan flooding, velocities also determined
- ZONE A99** To be protected from 100-year flood by Federal flood protection system under construction, no base elevations determined
- ZONE V** Coastal flood with velocity hazard (wave action), no base flood elevations determined
- ZONE VE** Coastal flood with velocity hazard (wave action), base flood elevations determined

FLOODWAY AREAS IN ZONE AE

OTHER FLOOD AREAS

- ZONE X** Areas of 500-year flood, areas of 100-year flood with average depths of less than 1 foot or with drainage areas less than 1 square mile, and areas protected by levees from 100-year flood

OTHER AREAS

- ZONE X** Areas determined to be outside 500-year flood plain
- ZONE D** Areas in which flood hazards are undetermined

- Flood Boundary
- Floodway Boundary
- Zone D Boundary
- Boundary Dividing Special Flood Hazard Zones
- Base Flood Elevation Line, Elevation in Feet*
- Cross Section Line
- Base Flood Elevation in Feet Where Uniform Within Zone*
- Elevation Reference Mark

*Referenced to the National Geodetic Vertical Datum of 1929

This is an official copy of a portion of the above referenced flood map. It was extracted using F-MIT On-Line. This map does not reflect changes or amendments which may have been made subsequent to the date on the title block. For the latest product information about National Flood Insurance Program flood maps check the FEMA Flood Map Store at www.msc.fema.gov

XTO Energy Inc.
San Juan Basin
Below Grade Tank Design and Construction Plan

In accordance with Rule 19.15.17.11 NMAC the following information describes the design and construction of below grade tanks on XTO Energy Inc. (XTO) locations. This is XTO's standard procedure for all below grade tanks. A separate plan will be submitted for any below grade tank (BGT) which does not conform to this plan.

General Plan

1. XTO will design and construct a BGT to contain liquids and solids and prevent contamination of fresh water and protect public health and environment
2. Prior to constructing the pit, topsoil will be stockpiled in the construction zone for later use in restoration.
3. XTO will post a well sign, in compliance with 19.15.3.103 NMAC, on the well site prior to construction of the BGT. The sign will list the Operator on record as the operator, the location of the well site by unit letter, section, township, range, and emergency telephone numbers.
4. XTO shall construct all new fences utilizing 48" steel mesh field-fence (hogwire) on the bottom with two strands of barbed wire on top, or with a pipe top rail. A 6' chain link fence topped with three strands of barbed wire will be used if the well location is within 1000' of a permanent residence, school, hospital, institution or church.
5. XTO shall construct an expanded metal covering on top of the BGT.
6. XTO will ensure that a BGT is constructed of materials resistant to the BGT's particular contents and resistant to damage from sunlight.
7. The BGT system will have a properly constructed foundation consisting of a level base free of rocks, debris, sharp edges or irregularities to prevent punctures, cracks or indentations of the liner or tank bottom
8. XTO will construct a berm and/or diversion ditch in a manner that prevents the collection of surface water run-on.
9. XTO will construct and use BGT that does not have double walls. The BGT sidewalls will be open for visual inspection for leaks, the BGT bottom will be elevated a minimum of 6" above the underlying ground surface and the BGT will be underlain with a geomembrane liner to divert leaked liquid to a location that can be visually inspected.
10. XTO will equip BGT's designed in this manner with a properly functioning automatic high-level shut-off control device and manual controls to prevent overflows.
11. The geomembrane liner shall consist of 30-mil flexible PVC or 60-mil HDPE liner, or an equivalent liner material that the appropriate division district office approves. The geomembrane liner shall have a hydraulic conductivity greater than 1×10^{-9} cm/sec. The geomembrane liner shall be composed of an impervious, synthetic material that is resistant to petroleum hydrocarbons, salts and acidic and alkaline solutions. The liner material shall be resistant to ultraviolet light. Liner compatibility shall comply with EPA SW-846 method 9090A
12. The general specifications for design and construction are attached.

XTO Energy Inc.
San Juan Basin
Below Grade Tank Maintenance and Operating Plan

In accordance with Rule 19.15.17.11 NMAC the following information describes the operation and maintenance of below grade tanks on XTO Energy Inc. (XTO) locations. This is XTO's standard procedure for all below grade tanks. A separate plan will be submitted for any below grade tank (BGT) which does not conform to this plan.

General Plan

1. XTO will operate and maintain a BGT to contain liquids and solids and prevent contamination of fresh water and protect public health and the environment.
2. XTO will not allow a BGT to overflow and will use berms and/or diversion ditch to prevent surface run on to enter the BGT.
3. XTO will continuously remove any visible or measurable layer of oil from the fluid surface of a BGT in order to prevent significant accumulation of oil.
4. XTO will inspect the BGT monthly and maintain written records for five years.
5. XTO will maintain adequate freeboard to prevent over topping of the BGT.

XTO Energy Inc.
San Juan Basin
Below Grade Tank Closure Plan

In accordance with Rule 19.15.17.11 NMAC the following information describes the closure requirements of below grade tanks on XTO Energy Inc (XTO) locations. This is XTO's standard procedure for all below grade tanks. A separate plan will be submitted for any below grade tank (BGT) which does not conform to this plan.

General Plan

1. XTO will close a BGT within the time periods provided in 19.15.17.13 NMAC, or by an earlier date that the division requires because of imminent danger to fresh water, public health or the environment.
2. XTO will close an existing BGT that does not meet the requirements of Paragraphs (1) through (4) of Subsection I of 19.15.17.11 NMAC or is not included in Paragraph (5) of Subsection I of 19.15.17.11 NMAC within five years after June 16, 2008, if not retrofitted to comply with Paragraphs (1) through (4) of Subsection I of 19.15.17.11 NMAC.
3. XTO will close a permitted BGT within 60 days of cessation of the BGT's operation or as required by the transitional provisions of Subsection B of 19.15.17.17 NMAC in accordance with a closure plan that the appropriate division district office approves. The closure report will be filed on form C-144.
4. XTO will remove liquids and sludge from a BGT prior to implementing a closure method and will dispose of the liquids and sludge in a division-approved facility.
5. XTO will remove the BGT and dispose of it in a division approved facility or recycle, reuse, or reclaim it in a manner that the appropriate division district office approves.
6. XTO will remove any on-site equipment associated with a BGT unless the equipment is required for some other purpose.
7. XTO will test the solids beneath the BGT to determine whether a release has occurred. At a minimum 5 point composite sample will be collected along with individual grab samples from any area that is wet, discolored or showing other evidence of a release. Samples will be analyzed for BTEX, TPH and chlorides to demonstrate that the benzene concentration, as determined by EPA SW-846 methods 8021B or 8260B or EPA method that the division approves, does not exceed 0.2 mg/kg; total BTEX concentration, as determined by EPA SW-846 methods 8021B or 8260B or other EPA method that the division approves, does not exceed 50 mg/kg; the TPH concentration, as determined by EPA method 418.1 or other EPA method that the division approves, does not exceed 100mg/kg; and the chloride concentration, as determined by EPA method 300.1 or other EPA method that the division approves, does not exceed 250 mg/kg, or the background concentration, whichever is greater. XTO will notify the division of its results on form C-141.
8. If XTO or the division determines that a release has occurred, XTO will comply with 19.15.3.116 NMAC and 19.15.1.19NMAC as appropriate.
9. If the sampling program demonstrates that a release has not occurred or that any release does not exceed the concentrations specified in Paragraph (4) of Subsection E of 19.15.17.13 NMAC, XTO will backfill the excavation with compacted, non-waste containing, earthen material; construct a division prescribed soil cover; recontour and re-vegetate the site.
10. Notice of closure will be given to the Aztec Division District III office between 72 hours and one week of closure via email or verbally. The notification will include the following:
 - i. Operator's name
 - ii. Location by Unit Letter, Section, Township, and Range. Well name and API number

11. All closure activities will include proper documentation and be available for review upon request and will be submitted to OCD within 60 days of closure of the BGT. Closure report will be filed on form C-144 and incorporate the following:
 - i. Details on capping and covering, where applicable
 - ii. Inspection reports
 - iii. Sampling results
12. Re-contouring of location will match fit, shape, line, form and texture of the surrounding area. Re-shaping will include drainage control, prevent ponding, and prevent erosion. Natural drainages will be unimpeded and water bars and/or silt traps will be placed in areas where needed to prevent erosion on a large scale. Final re-contour shall have a uniform appearance with smooth surface, fitting the natural landscape.
13. XTO will seed the disturbed areas the first growing season after the operator closes the pit. Seeding will be accomplished via drilling on the contour whenever practical or by other division-approved methods. BLM or Forest Service stipulated seed mixes will be used on federal lands. Vegetative cover will equal 70% of the native perennial vegetative cover (un-impacted) consisting of at least three native plant species, including at least one grass, but not including noxious weeds, and maintain that cover through two successive growing seasons. Repeat seeding or planting will be continued until successful vegetative growth occurs.
14. A minimum of 4' of cover shall be achieved and the cover shall include 1' of suitable material to establish vegetation at the site, or the background thickness of topsoil, whichever is greater.
15. The surface owner shall be notified of XTO's proposal to close the BGT as per the approved closure plan using certified mail, return receipt requested.