

District I  
625 N. French Dr., Hobbs, NM 88240  
District II  
1301 W. Grand Avenue, Artesia, NM 88210  
District III  
1000 Rio Brazos Road, Aztec, NM 87410  
District IV  
1220 S. St. Francis Dr., Santa Fe, NM 87505

State of New Mexico  
Energy Minerals and Natural Resources  
Department  
Oil Conservation Division  
1220 South St. Francis Dr.  
Santa Fe, NM 87505

Form C-144  
July 21, 2008

For temporary pits, closed-loop systems, and below-grade tanks, submit to the appropriate NMOCD District Office.  
For permanent pits and exceptions submit to the Santa Fe Environmental Bureau office and provide a copy to the appropriate NMOCD District Office.

2587

Pit, Closed-Loop System, Below-Grade Tank, or  
Proposed Alternative Method Permit or Closure Plan Application

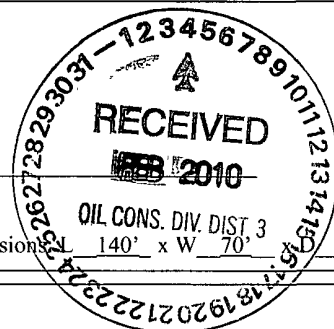
- Type of action: ☐ Permit of a pit, closed-loop system, below-grade tank, or proposed alternative method  
☒ Closure of a pit, closed-loop system, below-grade tank, or proposed alternative method  
☐ Modification to an existing permit  
☐ Closure plan only submitted for an existing permitted or non-permitted pit, closed-loop system, below-grade tank, or proposed alternative method

**Instructions: Please submit one application (Form C-144) per individual pit, closed-loop system, below-grade tank or alternative request**

Please be advised that approval of this request does not relieve the operator of liability should operations result in pollution of surface water, ground water or the environment. Nor does approval relieve the operator of its responsibility to comply with any other applicable governmental authority's rules, regulations or ordinances.

1.  
Operator: Williams Operating Co, LLC OGRID #: 120782  
Address: PO Box 640 / 721 S Main Aztec, NM 87410  
Facility or well name: Rosa Unit 321A  
API Number: 3003929881 OCD Permit Number: \_\_\_\_\_  
U/L or Qtr/Qtr L Section 20 Township 31N Range 5W County: Rio Arriba  
Center of Proposed Design: Latitude 36.88288 Longitude -107.3928724 NAD: ☐ 1927 ☒ 1983  
Surface Owner: ☒ Federal ☐ State ☐ Private ☐ Tribal Trust or Indian Allotment

2.  
☒ **Pit:** Subsection F or G of 19.15.17.11 NMAC  
Temporary: ☒ Drilling ☐ Workover  
☐ Permanent ☐ Emergency ☐ Cavitation ☐ P&A  
☐ Lined ☐ Unlined Liner type: Thickness 20 mil ☒ LLDPE ☐ HDPE ☐ PVC ☐ Other \_\_\_\_\_  
☒ String-Reinforced  
Liner Seams: ☒ Welded ☒ Factory ☐ Other \_\_\_\_\_ Volume: 20,000 bbl Dimension 140' x W 70' x D 12'



3.  
☐ **Closed-loop System:** Subsection H of 19.15.17.11 NMAC  
Type of Operation: ☐ P&A ☐ Drilling a new well ☐ Workover or Drilling (Applies to activities which require prior approval of a permit or notice of intent)  
☐ Drying Pad ☐ Above Ground Steel Tanks ☐ Haul-off Bins ☐ Other \_\_\_\_\_  
☐ Lined ☐ Unlined Liner type: Thickness \_\_\_\_\_ mil ☐ LLDPE ☐ HDPE ☐ PVC ☐ Other \_\_\_\_\_  
Liner Seams: ☐ Welded ☐ Factory ☐ Other \_\_\_\_\_



4.  
☐ **Below-grade tank:** Subsection I of 19.15.17.11 NMAC  
Volume: \_\_\_\_\_ bbl Type of fluid: \_\_\_\_\_  
Tank Construction material: \_\_\_\_\_  
☐ Secondary containment with leak detection ☐ Visible sidewalls, liner, 6-inch lift and automatic overflow shut-off  
☐ Visible sidewalls and liner ☐ Visible sidewalls only ☐ Other \_\_\_\_\_  
Liner type: Thickness \_\_\_\_\_ mil ☐ HDPE ☐ PVC ☐ Other \_\_\_\_\_

5.  
☐ **Alternative Method:**  
Submittal of an exception request is required. Exceptions must be submitted to the Santa Fe Environmental Bureau office for consideration of approval.

6.

**Fencing:** Subsection D of 19.15.17.11 NMAC (*Applies to permanent pits, temporary pits, and below-grade tanks*)

- ☐ Chain link, six feet in height, two strands of barbed wire at top (*Required if located within 1000 feet of a permanent residence, school, hospital, institution or church*)
- ☐ Four foot height, four strands of barbed wire evenly spaced between one and four feet
- ☐ Alternate. Please specify \_\_\_\_\_

7.

**Netting:** Subsection E of 19.15.17.11 NMAC (*Applies to permanent pits and permanent open top tanks*)

- ☐ Screen ☐ Netting ☐ Other \_\_\_\_\_
- ☐ Monthly inspections (If netting or screening is not physically feasible)

8.

**Signs:** Subsection C of 19.15.17.11 NMAC

- ☐ 12"x 24", 2" lettering, providing Operator's name, site location, and emergency telephone numbers
- ☒ Signed in compliance with 19.15.3.103 NMAC

9.

**Administrative Approvals and Exceptions:**

Justifications and/or demonstrations of equivalency are required. Please refer to 19.15.17 NMAC for guidance.

**Please check a box if one or more of the following is requested, if not leave blank:**

- ☒ Administrative approval(s): Requests must be submitted to the appropriate division district or the Santa Fe Environmental Bureau office for consideration of approval.
- ☐ Exception(s): Requests must be submitted to the Santa Fe Environmental Bureau office for consideration of approval.

10.

**Siting Criteria (regarding permitting):** 19.15.17.10 NMAC

**Instructions:** The applicant must demonstrate compliance for each siting criteria below in the application. Recommendations of acceptable source material are provided below. Requests regarding changes to certain siting criteria may require administrative approval from the appropriate district office or may be considered an exception which must be submitted to the Santa Fe Environmental Bureau office for consideration of approval. Applicant must attach justification for request. Please refer to 19.15.17.10 NMAC for guidance. Siting criteria does not apply to drying pads or above-grade tanks associated with a closed-loop system.

Ground water is less than 50 feet below the bottom of the temporary pit, permanent pit, or below-grade tank. - NM Office of the State Engineer - iWATERS database search; USGS; Data obtained from nearby wells	<input type="checkbox"/> Yes <input checked="" type="checkbox"/> No
Within 300 feet of a continuously flowing watercourse, or 200 feet of any other significant watercourse or lakebed, sinkhole, or playa lake (measured from the ordinary high-water mark). - Topographic map; Visual inspection (certification) of the proposed site	<input type="checkbox"/> Yes <input checked="" type="checkbox"/> No
Within 300 feet from a permanent residence, school, hospital, institution, or church in existence at the time of initial application. ( <i>Applies to temporary, emergency, or cavitation pits and below-grade tanks</i> ) - Visual inspection (certification) of the proposed site; Aerial photo; Satellite image	<input type="checkbox"/> Yes <input checked="" type="checkbox"/> No <input type="checkbox"/> NA
Within 1000 feet from a permanent residence, school, hospital, institution, or church in existence at the time of initial application. ( <i>Applies to permanent pits</i> ) - Visual inspection (certification) of the proposed site; Aerial photo; Satellite image	<input type="checkbox"/> Yes <input type="checkbox"/> No <input checked="" type="checkbox"/> NA
Within 500 horizontal feet of a private, domestic fresh water well or spring that less than five households use for domestic or stock watering purposes, or within 1000 horizontal feet of any other fresh water well or spring, in existence at the time of initial application. - NM Office of the State Engineer - iWATERS database search; Visual inspection (certification) of the proposed site	<input type="checkbox"/> Yes <input checked="" type="checkbox"/> No
Within incorporated municipal boundaries or within a defined municipal fresh water well field covered under a municipal ordinance adopted pursuant to NMSA 1978, Section 3-27-3, as amended. - Written confirmation or verification from the municipality; Written approval obtained from the municipality	<input type="checkbox"/> Yes <input checked="" type="checkbox"/> No
Within 500 feet of a wetland. - US Fish and Wildlife Wetland Identification map; Topographic map; Visual inspection (certification) of the proposed site	<input type="checkbox"/> Yes <input checked="" type="checkbox"/> No
Within the area overlying a subsurface mine. - Written confirmation or verification or map from the NM EMNRD-Mining and Mineral Division	<input type="checkbox"/> Yes <input checked="" type="checkbox"/> No
Within an unstable area. - Engineering measures incorporated into the design; NM Bureau of Geology & Mineral Resources; USGS; NM Geological Society; Topographic map	<input type="checkbox"/> Yes <input checked="" type="checkbox"/> No
Within a 100-year floodplain. - FEMA map	<input type="checkbox"/> Yes <input checked="" type="checkbox"/> No

11.

**Temporary Pits, Emergency Pits, and Below-grade Tanks Permit Application Attachment Checklist:** Subsection B of 19.15.17.9 NMAC**Instructions:** Each of the following items must be attached to the application. Please indicate, by a check mark in the box, that the documents are attached.

- ☐ Hydrogeologic Report (Below-grade Tanks) - based upon the requirements of Paragraph (4) of Subsection B of 19.15.17.9 NMAC  
☐ Hydrogeologic Data (Temporary and Emergency Pits) - based upon the requirements of Paragraph (2) of Subsection B of 19.15.17.9 NMAC  
☒ Siting Criteria Compliance Demonstrations - based upon the appropriate requirements of 19.15.17.10 NMAC  
☒ Design Plan - based upon the appropriate requirements of 19.15.17.11 NMAC  
☒ Operating and Maintenance Plan - based upon the appropriate requirements of 19.15.17.12 NMAC  
☒ Closure Plan (Please complete Boxes 14 through 18, if applicable) - based upon the appropriate requirements of Subsection C of 19.15.17.9 NMAC and 19.15.17.13 NMAC  
☐ Previously Approved Design (attach copy of design) API Number: \_\_\_\_\_ or Permit Number: \_\_\_\_\_

12.

**Closed-loop Systems Permit Application Attachment Checklist:** Subsection B of 19.15.17.9 NMAC**Instructions:** Each of the following items must be attached to the application. Please indicate, by a check mark in the box, that the documents are attached.

- ☐ Geologic and Hydrogeologic Data (only for on-site closure) - based upon the requirements of Paragraph (3) of Subsection B of 19.15.17.9  
☐ Siting Criteria Compliance Demonstrations (only for on-site closure) - based upon the appropriate requirements of 19.15.17.10 NMAC  
☐ Design Plan - based upon the appropriate requirements of 19.15.17.11 NMAC  
☐ Operating and Maintenance Plan - based upon the appropriate requirements of 19.15.17.12 NMAC  
☐ Closure Plan (Please complete Boxes 14 through 18, if applicable) - based upon the appropriate requirements of Subsection C of 19.15.17.9 NMAC and 19.15.17.13 NMAC  
☐ Previously Approved Design (attach copy of design) API Number: \_\_\_\_\_  
☐ Previously Approved Operating and Maintenance Plan API Number: \_\_\_\_\_ (Applies only to closed-loop system that use above ground steel tanks or haul-off bins and propose to implement waste removal for closure)

13.

**Permanent Pits Permit Application Checklist:** Subsection B of 19.15.17.9 NMAC**Instructions:** Each of the following items must be attached to the application. Please indicate, by a check mark in the box, that the documents are attached.

- ☐ Hydrogeologic Report - based upon the requirements of Paragraph (1) of Subsection B of 19.15.17.9 NMAC  
☐ Siting Criteria Compliance Demonstrations - based upon the appropriate requirements of 19.15.17.10 NMAC  
☐ Climatological Factors Assessment  
☐ Certified Engineering Design Plans - based upon the appropriate requirements of 19.15.17.11 NMAC  
☐ Dike Protection and Structural Integrity Design - based upon the appropriate requirements of 19.15.17.11 NMAC  
☐ Leak Detection Design - based upon the appropriate requirements of 19.15.17.11 NMAC  
☐ Liner Specifications and Compatibility Assessment - based upon the appropriate requirements of 19.15.17.11 NMAC  
☐ Quality Control/Quality Assurance Construction and Installation Plan  
☐ Operating and Maintenance Plan - based upon the appropriate requirements of 19.15.17.12 NMAC  
☐ Freeboard and Overtopping Prevention Plan - based upon the appropriate requirements of 19.15.17.11 NMAC  
☐ Nuisance or Hazardous Odors, including H<sub>2</sub>S, Prevention Plan  
☐ Emergency Response Plan  
☐ Oil Field Waste Stream Characterization  
☐ Monitoring and Inspection Plan  
☐ Erosion Control Plan  
☐ Closure Plan - based upon the appropriate requirements of Subsection C of 19.15.17.9 NMAC and 19.15.17.13 NMAC

14.

**Proposed Closure:** 19.15.17.13 NMAC**Instructions:** Please complete the applicable boxes, Boxes 14 through 18, in regards to the proposed closure plan.

- Type: ☒ Drilling ☐ Workover ☐ Emergency ☐ Cavitation ☐ P&A ☐ Permanent Pit ☐ Below-grade Tank ☐ Closed-loop System  
☐ Alternative  
 Proposed Closure Method: ☐ Waste Excavation and Removal  
☐ Waste Removal (Closed-loop systems only)  
☒ On-site Closure Method (Only for temporary pits and closed-loop systems)  
☒ In-place Burial ☐ On-site Trench Burial  
☐ Alternative Closure Method (Exceptions must be submitted to the Santa Fe Environmental Bureau for consideration)

15.

**Waste Excavation and Removal Closure Plan Checklist:** (19.15.17.13 NMAC) **Instructions:** Each of the following items must be attached to the closure plan. Please indicate, by a check mark in the box, that the documents are attached.

- ☐ Protocols and Procedures - based upon the appropriate requirements of 19.15.17.13 NMAC  
☐ Confirmation Sampling Plan (if applicable) - based upon the appropriate requirements of Subsection F of 19.15.17.13 NMAC  
☐ Disposal Facility Name and Permit Number (for liquids, drilling fluids and drill cuttings)  
☐ Soil Backfill and Cover Design Specifications - based upon the appropriate requirements of Subsection H of 19.15.17.13 NMAC  
☐ Re-vegetation Plan - based upon the appropriate requirements of Subsection I of 19.15.17.13 NMAC  
☐ Site Reclamation Plan - based upon the appropriate requirements of Subsection G of 19.15.17.13 NMAC

16.

**Waste Removal Closure For Closed-loop Systems That Utilize Above Ground Steel Tanks or Haul-off Bins Only:** (19.15.17.13.D NMAC)

**Instructions:** Please identify the facility or facilities for the disposal of liquids, drilling fluids and drill cuttings. Use attachment if more than two facilities are required.

Disposal Facility Name: \_\_\_\_\_ Disposal Facility Permit Number: \_\_\_\_\_

Disposal Facility Name: \_\_\_\_\_ Disposal Facility Permit Number: \_\_\_\_\_

Will any of the proposed closed-loop system operations and associated activities occur on or in areas that *will not* be used for future service and operations?

☐ Yes (If yes, please provide the information below) ☐ No

*Required for impacted areas which will not be used for future service and operations:*

☐ Soil Backfill and Cover Design Specifications - based upon the appropriate requirements of Subsection H of 19.15.17.13 NMAC

☐ Re-vegetation Plan - based upon the appropriate requirements of Subsection I of 19.15.17.13 NMAC

☐ Site Reclamation Plan - based upon the appropriate requirements of Subsection G of 19.15.17.13 NMAC

17.

**Siting Criteria (regarding on-site closure methods only):** 19.15.17.10 NMAC

**Instructions:** Each siting criteria requires a demonstration of compliance in the closure plan. Recommendations of acceptable source material are provided below. Requests regarding changes to certain siting criteria may require administrative approval from the appropriate district office or may be considered an exception which must be submitted to the Santa Fe Environmental Bureau office for consideration of approval. Justifications and/or demonstrations of equivalency are required. Please refer to 19.15.17.10 NMAC for guidance.

Ground water is less than 50 feet below the bottom of the buried waste.

- NM Office of the State Engineer - iWATERS database search; USGS; Data obtained from nearby wells

☐ Yes ☐ No  
☐ NA

Ground water is between 50 and 100 feet below the bottom of the buried waste

- NM Office of the State Engineer - iWATERS database search; USGS; Data obtained from nearby wells

☐ Yes ☐ No  
☐ NA

Ground water is more than 100 feet below the bottom of the buried waste.

- NM Office of the State Engineer - iWATERS database search; USGS; Data obtained from nearby wells

☐ Yes ☐ No  
☐ NA

Within 300 feet of a continuously flowing watercourse, or 200 feet of any other significant watercourse or lakebed, sinkhole, or playa lake (measured from the ordinary high-water mark).

- Topographic map; Visual inspection (certification) of the proposed site

☐ Yes ☐ No

Within 300 feet from a permanent residence, school, hospital, institution, or church in existence at the time of initial application.

- Visual inspection (certification) of the proposed site; Aerial photo; Satellite image

☐ Yes ☐ No

Within 500 horizontal feet of a private, domestic fresh water well or spring that less than five households use for domestic or stock watering purposes, or within 1000 horizontal feet of any other fresh water well or spring, in existence at the time of initial application.

- NM Office of the State Engineer - iWATERS database; Visual inspection (certification) of the proposed site

☐ Yes ☐ No

Within incorporated municipal boundaries or within a defined municipal fresh water well field covered under a municipal ordinance adopted pursuant to NMSA 1978, Section 3-27-3, as amended.

- Written confirmation or verification from the municipality; Written approval obtained from the municipality

☐ Yes ☐ No

Within 500 feet of a wetland.

- US Fish and Wildlife Wetland Identification map; Topographic map; Visual inspection (certification) of the proposed site

☐ Yes ☐ No

Within the area overlying a subsurface mine.

- Written confirmation or verification or map from the NM EMNRD-Mining and Mineral Division

☐ Yes ☐ No

Within an unstable area.

- Engineering measures incorporated into the design; NM Bureau of Geology & Mineral Resources; USGS; NM Geological Society; Topographic map

☐ Yes ☐ No

Within a 100-year floodplain.

- FEMA map

☐ Yes ☐ No

18.

**On-Site Closure Plan Checklist:** (19.15.17.13 NMAC) **Instructions:** Each of the following items must be attached to the closure plan. Please indicate, by a check mark in the box, that the documents are attached.

☐ Siting Criteria Compliance Demonstrations - based upon the appropriate requirements of 19.15.17.10 NMAC

☐ Proof of Surface Owner Notice - based upon the appropriate requirements of Subsection F of 19.15.17.13 NMAC

☐ Construction/Design Plan of Burial Trench (if applicable) based upon the appropriate requirements of 19.15.17.11 NMAC

☐ Construction/Design Plan of Temporary Pit (for in-place burial of a drying pad) - based upon the appropriate requirements of 19.15.17.11 NMAC

☐ Protocols and Procedures - based upon the appropriate requirements of 19.15.17.13 NMAC

☐ Confirmation Sampling Plan (if applicable) - based upon the appropriate requirements of Subsection F of 19.15.17.13 NMAC

☐ Waste Material Sampling Plan - based upon the appropriate requirements of Subsection F of 19.15.17.13 NMAC

☐ Disposal Facility Name and Permit Number (for liquids, drilling fluids and drill cuttings or in case on-site closure standards cannot be achieved)

☐ Soil Cover Design - based upon the appropriate requirements of Subsection H of 19.15.17.13 NMAC

☐ Re-vegetation Plan - based upon the appropriate requirements of Subsection I of 19.15.17.13 NMAC

☐ Site Reclamation Plan - based upon the appropriate requirements of Subsection G of 19.15.17.13 NMAC

19.

**Operator Application Certification:**

I hereby certify that the information submitted with this application is true, accurate and complete to the best of my knowledge and belief.

Name (Print): \_\_\_\_\_ Title: \_\_\_\_\_

Signature: \_\_\_\_\_ Date: \_\_\_\_\_

e-mail address: \_\_\_\_\_ Telephone: \_\_\_\_\_

20.

**OCD Approval:** ☐ Permit Application (including closure plan) ☒ Closure Plan (only) ☐ OCD Conditions (see attachment)

OCD Representative Signature: Jonathan D. Kelly Approval Date: 6/08/2012

Title: Deputy Oil & Gas Inspector, District #3 OCD Permit Number: \_\_\_\_\_

21.

**Closure Report (required within 60 days of closure completion):** Subsection K of 19.15.17.13 NMAC

*Instructions: Operators are required to obtain an approved closure plan prior to implementing any closure activities and submitting the closure report. The closure report is required to be submitted to the division within 60 days of the completion of the closure activities. Please do not complete this section of the form until an approved closure plan has been obtained and the closure activities have been completed.*

☐ Closure Completion Date: 10/24/2008

22.

**Closure Method:**

☐ Waste Excavation and Removal ☒ On-Site Closure Method ☐ Alternative Closure Method ☐ Waste Removal (Closed-loop systems only)  
☐ If different from approved plan, please explain.

23.

**Closure Report Regarding Waste Removal Closure For Closed-loop Systems That Utilize Above Ground Steel Tanks or Haul-off Bins Only:**

*Instructions: Please identify the facility or facilities for where the liquids, drilling fluids and drill cuttings were disposed. Use attachment if more than two facilities were utilized.*

Disposal Facility Name: \_\_\_\_\_ Disposal Facility Permit Number: \_\_\_\_\_

Disposal Facility Name: \_\_\_\_\_ Disposal Facility Permit Number: \_\_\_\_\_

Were the closed-loop system operations and associated activities performed on or in areas that *will not* be used for future service and operations?

☐ Yes (If yes, please demonstrate compliance to the items below) ☐ No

*Required for impacted areas which will not be used for future service and operations.*

- ☐ Site Reclamation (Photo Documentation)  
☐ Soil Backfilling and Cover Installation  
☐ Re-vegetation Application Rates and Seeding Technique

24.

**Closure Report Attachment Checklist:** *Instructions: Each of the following items must be attached to the closure report. Please indicate, by a check mark in the box, that the documents are attached.*

- ☒ Proof of Closure Notice (surface owner and division)  
☒ Proof of Deed Notice (required for on-site closure)  
☒ Plot Plan (for on-site closures and temporary pits)  
☐ Confirmation Sampling Analytical Results (if applicable)  
☒ Waste Material Sampling Analytical Results (required for on-site closure)  
☒ Disposal Facility Name and Permit Number  
☒ Soil Backfilling and Cover Installation  
☐ Re-vegetation Application Rates and Seeding Technique  
☒ Site Reclamation (Photo Documentation)

On-site Closure Location: Latitude 36.88288 Longitude -107.3928724 NAD: ☐ 1927 ☐ 1983

19.

**Operator Closure Certification:**

I hereby certify that the information submitted with this application is true, accurate and complete to the best of my knowledge and belief.

Name (Print): Michael K. Lane Title: Sr. EH & S Specialist

Signature: [Signature] Date: 11/21/08

e-mail address: myke.lane@williams.com Telephone: 505-634-4219

**Lane, Myke (E&P)**

---

**From:** Powell, Brandon, EMNRD [Brandon.Powell@state.nm.us]  
**Sent:** Tuesday, September 16, 2008 11:37 AM  
**To:** johnny@adobecontractorsinc.com  
**Cc:** Lane, Myke (E&P)  
**Subject:** RE: Clean-up notification

Johnny-

Just a few questions

Are you following Williams's closure plan on file for each of these locations? Have you received any sample results back from the sampling?

In the future you are required to notify the OCD 72 hours but no more that 1week before you close a pit.

Thank You  
Brandon Powell  
Environmental Specialist  
New Mexico Oil Conservation  
1000 Rio Brazos Rd, Aztec NM 87410  
Office: (505) 334-6178 ext. 15  
E-mail: [Brandon.Powell@state.nm.us](mailto:Brandon.Powell@state.nm.us)

---

**From:** johnny@adobecontractorsinc.com [mailto:johnny@adobecontractorsinc.com]  
**Sent:** Tuesday, September 16, 2008 10:03 AM  
**To:** Powell, Brandon, EMNRD  
**Subject:** Clean-up notification

Brandon,  
I just found out that I am supposed to be notifying you when we start back-filling pits. We have already done the clean-up on the Rosa Unit #151B and have started the clean-ups on the Rosa Unit's 88C and 321A. Now that I know, I will notify you when I tell the BLM. Sorry for the error. Hopefully we will get all the bugs worked out. Please let me know if you have any questions. Thank-you,

Johnny Stinson  
Adobe Contractors  
(505)632-1486 office  
(505)320-6076 cell  
[johnny@adobecontractorsinc.com](mailto:johnny@adobecontractorsinc.com)

---

This inbound email has been scanned by the MessageLabs Email Security System.

---

Confidentiality Notice: This e-mail, including all attachments is for the sole use of the intended recipient(s) and may contain confidential and privileged information. Any unauthorized review, use, disclosure or distribution is prohibited unless specifically provided under the New Mexico Inspection of Public Records Act. If you are not the intended recipient, please contact the sender and destroy all copies of this message. -- This email has been scanned by the Sybari - Antigen Email System.

10/22/2008



STATE OF NEW MEXICO:

COUNTY OF RIO ARRIBA:

**RECORDATION NOTICE OF PIT BURIAL**

In accordance with Section 19.15.17.13.F.1.f of the NMAC, operator hereby provides notice in the public record of an on-site burial of a temporary pit at the following location:

Well Name:	<u>Rosa 321A</u>
Latitude (DDD MM.MMM'):	<u>36.88288</u>
Longitude (DDD MM.MMM'):	<u>-107.3928724</u>
Unit Letter (1/4, 1/4):	<u>L</u>
Section:	<u>20</u>
Township:	<u>31N</u>
Range:	<u>05W</u>
County:	<u>Rio Arriba</u>
State:	<u>NM</u>

IN WITNESS WHEREOF, this Recordation Notice of Pit Burial has been executed on the date indicated below by the undersigned.



WILLIAMS COMPANIES, INC.

Michael K. Lane EH&S Specialist

11/19/08  
Date

STATE OF NEW MEXICO  
COUNTY OF SAN JUAN

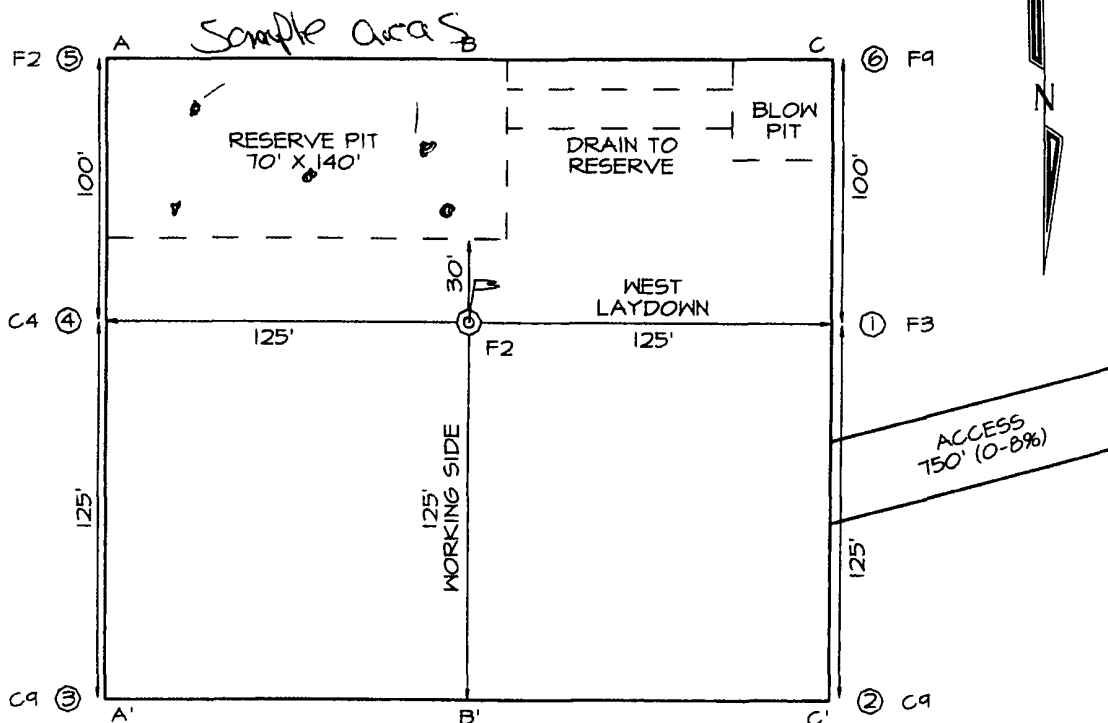
This document was acknowledged before me on this 19 day of Nov 2008  
by Michael K Lane, EH&S Specialist of WILLIAMS COMPANIES, INC.

Notary Public Signature

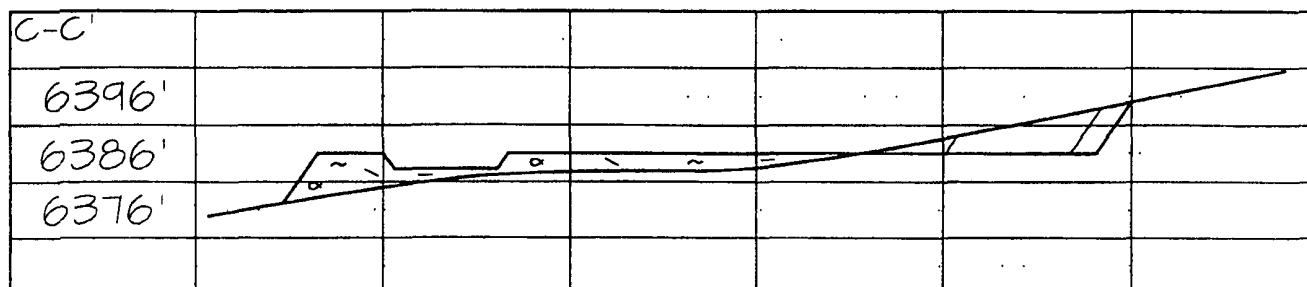
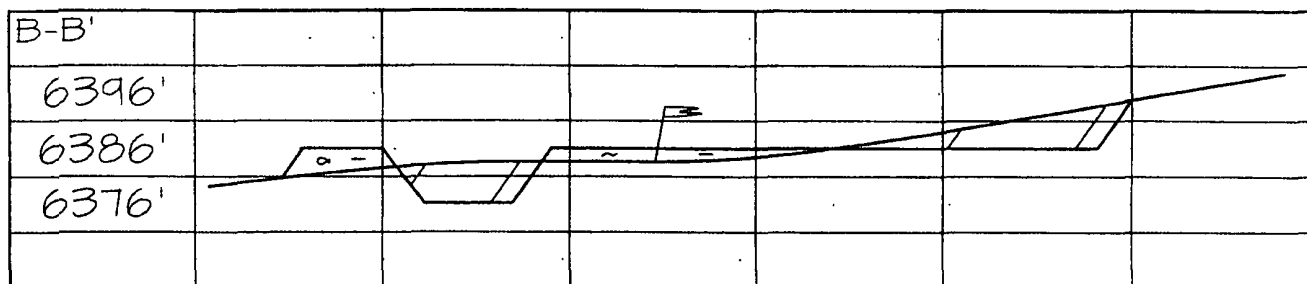
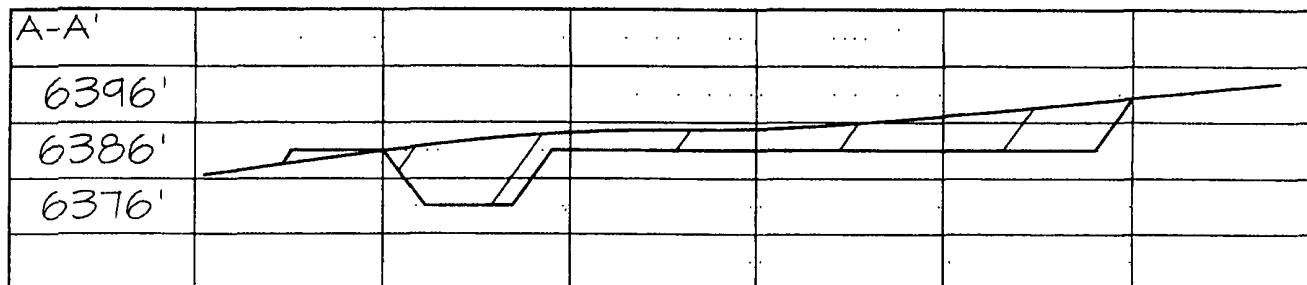
My Commission Expires  
November 30, 2011

Natasha Meador  
Notary Name Printed

R.V. 321A



Rosa Unit 321A Reclaimed Pit Sample





EPA METHOD 8015 Modified  
Nonhalogenated Volatile Organics  
Total Petroleum Hydrocarbons

Client:	WPX	Project #:	04108-0003
Sample ID:	Rosa 321A	Date Reported:	09-27-08
Laboratory Number:	47389	Date Sampled:	09-19-08
Chain of Custody No:	5393	Date Received:	09-22-08
Sample Matrix:	Soil	Date Extracted:	09-26-08
Preservative:		Date Analyzed:	09-26-08
Condition:	Intact	Analysis Requested:	8015 TPH

Parameter	Concentration (mg/Kg)	Det. Limit (mg/Kg)
Gasoline Range (C5 - C10)	ND	0.2
Diesel Range (C10 - C28)	ND	0.1
Total Petroleum Hydrocarbons	ND	0.2

ND - Parameter not detected at the stated detection limit.

References: Method 8015B, Nonhalogenated Volatile Organics, Test Methods for Evaluating Solid Waste, SW-846, USEPA, December 1996.

Comments: **Rosa 321A.**

Analyst

Review

EPA Method 8015 Modified  
Nonhalogenated Volatile Organics  
Total Petroleum Hydrocarbons

Quality Assurance Report

Client:	QA/QC	Project #:	N/A
Sample ID:	09-26-08 QA/QC	Date Reported:	09-27-08
Laboratory Number:	47378	Date Sampled:	N/A
Sample Matrix:	Methylene Chloride	Date Received:	N/A
Preservative:	N/A	Date Analyzed:	09-26-08
Condition:	N/A	Analysis Requested:	TPH

	I-Cal Date	I-Cal RF:	C-Cal RF:	% Difference	Accept. Range
Gasoline Range C5 - C10	05-07-07	1.0069E+003	1.0073E+003	0.04%	0 - 15%
Diesel Range C10 - C28	05-07-07	1.0052E+003	1.0056E+003	0.04%	0 - 15%

Blank Conc. (mg/L - mg/Kg)	Concentration	Detection Limit
Gasoline Range C5 - C10	ND	0.2
Diesel Range C10 - C28	ND	0.1
Total Petroleum Hydrocarbons	ND	0.2

Duplicate Conc. (mg/Kg)	Sample	Duplicate	% Difference	Accept. Range
Gasoline Range C5 - C10	ND	ND	0.0%	0 - 30%
Diesel Range C10 - C28	113	112	0.6%	0 - 30%

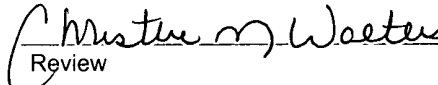
Spike Conc. (mg/Kg)	Sample	Spike Added	Spike Result	% Recovery	Accept. Range
Gasoline Range C5 - C10	ND	250	243	97.2%	75 - 125%
Diesel Range C10 - C28	113	250	358	98.6%	75 - 125%

ND - Parameter not detected at the stated detection limit.

References: Method 8015B, Nonhalogenated Volatile Organics, Test Methods for Evaluating Solid Waste, SW-846, USEPA, December 1996.

Comments: QA/QC for Samples 47378 - 47383 and 47388 - 47390.

Analyst 

Review 

EPA METHOD 8021  
AROMATIC VOLATILE ORGANICS

Client:	WPX	Project #:	04108-0003
Sample ID:	Rosa 321A	Date Reported:	09-27-08
Laboratory Number:	47389	Date Sampled:	09-19-08
Chain of Custody:	5393	Date Received:	09-22-08
Sample Matrix:	Soil	Date Analyzed:	09-26-08
Preservative:		Date Extracted:	09-26-08
Condition:	Intact	Analysis Requested:	BTEX

Parameter	Concentration (ug/Kg)	Det. Limit (ug/Kg)
Benzene	1.2	0.9
Toluene	4.3	1.0
Ethylbenzene	1.6	1.0
p,m-Xylene	1.2	1.2
o-Xylene	1.4	0.9
Total BTEX	9.7	

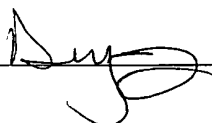
ND - Parameter not detected at the stated detection limit.

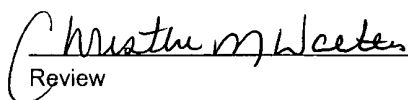
Surrogate Recoveries:	Parameter	Percent Recovery
	Fluorobenzene	97.0 %
	1,4-difluorobenzene	97.0 %
	Bromochlorobenzene	97.0 %

References: Method 5030B, Purge-and-Trap, Test Methods for Evaluating Solid Waste, SW-846, USEPA, December 1996.

Method 8021B, Aromatic Volatile Organics, Test Methods for Evaluating Solid Waste, SW-846, USEPA, December 1996.

Comments: Rosa 321A.

Analyst 

Review 

Client:	N/A	Project #:	N/A
Sample ID:	09-26-BT QA/QC	Date Reported:	09-27-08
Laboratory Number:	47366	Date Sampled:	N/A
Sample Matrix:	Soil	Date Received:	N/A
Preservative:	N/A	Date Analyzed:	09-26-08
Condition:	N/A	Analysis:	BTEX

Calibration and Detection Limits (ug/L)	I-Cal RF:	C-Cal RF:	%Diff:	Blank Conc	Detect. Limit
		Accept. Range 0 - 15%			
Benzene	6.4780E+007	6.4910E+007	0.2%	ND	0.1
Toluene	4.8353E+007	4.8450E+007	0.2%	ND	0.1
Ethylbenzene	3.8201E+007	3.8277E+007	0.2%	ND	0.1
p,m-Xylene	8.0723E+007	8.0885E+007	0.2%	ND	0.1
o-Xylene	3.8159E+007	3.8236E+007	0.2%	ND	0.1

Duplicate Conc. (ug/Kg)	Sample	Duplicate	%Diff.	Accept Range	Detect. Limit
Benzene	2.1	2.0	4.8%	0 - 30%	0.9
Toluene	6.5	6.4	1.5%	0 - 30%	1.0
Ethylbenzene	2.7	2.8	3.7%	0 - 30%	1.0
p,m-Xylene	5.5	5.8	5.5%	0 - 30%	1.2
o-Xylene	3.7	3.9	5.4%	0 - 30%	0.9

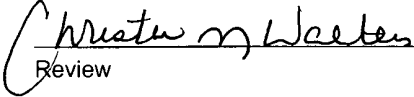
Spike Conc. (ug/Kg)	Sample	Amount Spiked	Spiked Sample	% Recovery	Accept Range
Benzene	2.1	50.0	53.1	102%	39 - 150
Toluene	6.5	50.0	50.5	89.4%	46 - 148
Ethylbenzene	2.7	50.0	49.7	94.3%	32 - 160
p,m-Xylene	5.5	100	103	97.2%	46 - 148
o-Xylene	3.7	50.0	51.7	96.3%	46 - 148

ND - Parameter not detected at the stated detection limit.

References      Method 5030B, Purge-and-Trap, Test Methods for Evaluating Solid Waste, SW-846, USEPA, December 1996.  
                          Method 8021B, Aromatic and Halogenated Volatiles by Gas Chromatography Using Photoionization and/or Electrolytic Conductivity Detectors, SW-846, USEPA December 1996.

Comments:      QA/QC for Samples 47366, 47378 - 47383, and 47388 - 47390.

Analyst 

Review 

Client:	WPX	Project #:	04108-0003
Sample ID:	Rosa 321A	Date Reported:	09-30-08
Laboratory Number:	47389	Date Sampled:	09-19-08
Chain of Custody No:	5393	Date Received:	09-22-08
Sample Matrix:	Soil	Date Extracted:	09-26-08
Preservative:		Date Analyzed:	09-26-08
Condition:	Intact	Analysis Needed:	TPH-418.1

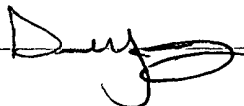
Parameter	Concentration (mg/kg)	Det. Limit (mg/kg)
Total Petroleum Hydrocarbons	21.3	5.0

ND = Parameter not detected at the stated detection limit.

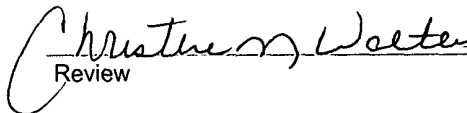
References: Method 418.1, Petroleum Hydrocarbons, Total Recoverable, Chemical Analysis of Water and Waste, USEPA Storet No. 4551, 1978.

Comments: Rosa 321A.

Analyst



Review



# ENVIROTECH LABS

PRACTICAL SOLUTIONS FOR A BETTER TOMORROW

EPA METHOD 418.1  
TOTAL PETROLEUM  
HYDROCARBONS  
QUALITY ASSURANCE REPORT

Client:	QA/QC	Project #:	N/A
Sample ID:	QA/QC	Date Reported:	09-30-08
Laboratory Number:	09-26-TPH.QA/QC 47366	Date Sampled:	N/A
Sample Matrix:	Freon-113	Date Analyzed:	09-26-08
Preservative:	N/A	Date Extracted:	09-26-08
Condition:	N/A	Analysis Needed:	TPH

Calibration	I-Cal Date	C-Cal Date	I-Cal RF	C-Cal RF	% Difference	Accept. Range
	09-18-08	09-26-08	1,660	1,540	7.2%	+/- 10%

Blank Conc. (mg/Kg)	Concentration	Detection Limit
TPH	ND	14.6

Duplicate Conc. (mg/Kg)	Sample	Duplicate	% Difference	Accept. Range
TPH	19.9	15.9	20.1%	+/- 30%

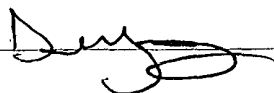
Spike Conc. (mg/Kg)	Sample	Spike Added	Spike Result	% Recovery	Accept Range
TPH	19.9	2,000	2,190	108%	80 - 120%

ND = Parameter not detected at the stated detection limit.

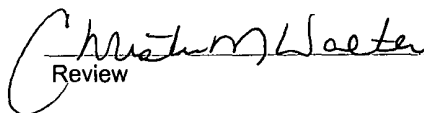
References: Method 418.1, Petroleum Hydrocarbons, Total Recoverable, Chemical Analysis of Water and Waste, USEPA Storet No. 4551, 1978.

Comments: QA/QC for Samples 47366, 47388 - 47389 and 47391 - 47396.

Analyst



Review



Client:	WPX	Project #:	04108-0003
Sample ID:	Rosa 321A	Date Reported:	09-29-08
Lab ID#:	47389	Date Sampled:	09-19-08
Sample Matrix:	Soil	Date Received:	09-22-08
Preservative:		Date Analyzed:	09-29-08
Condition:	Intact	Chain of Custody:	5393

Parameter	Concentration (mg/Kg)
-----------	-----------------------

Total Chloride

53.0

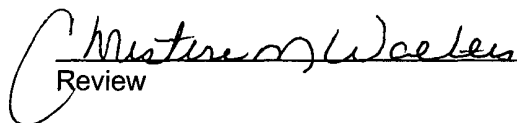
Reference: U.S.E.P.A., 4500B, "Methods for Chemical Analysis of Water and Wastes", 1983.  
Standard Methods For The Examination of Water And Waste Water", 18th ed., 1992.

Comments: Rosa 321A.

Analyst



Review



## 5393

# ENVIROTECH INC.

5796 U.S. Highway 64 • Farmington, NM 87401 • Tel 505-632-0615



**Williams Production Co., LLC**  
**San Juan Basin: New Mexico Assets**  
Temporary Pit In-place Closure Plan  
Drilling/Completion and Workover  
(Groundwater >100 feet bgs)

In accordance with Rule 19.15.17.13 NMAC, the following plan describes the general in-place closure requirements of temporary pits on Williams Production Co, LLC (WPX) locations in the San Juan Basin of New Mexico. This is WPX's standard procedure for all temporary pits to be utilized for the drilling, completion and/or workovers of oil and gas wells operated by WPX. For those temporary pits which do not conform to this standard closure plan, a separate well/pit specific closure plan will be developed and utilized.

All closure activities will include proper documentation and will be submitted to OCD within 60 days of the pit closure on a Closure Report using Division Form C-144. The Report will include the following:

- Details on Capping and Covering, where applicable
- Plot Plan (Pit Diagram)
- Inspection reports
- Sampling Results
- Division Form C-105: *WELL COMPLETION OR RECOMPLETION REPORT AND LOG*
- Copy of Deed Notice filed with the County Clerk (format to meet County requirements)

**General Plan Requirements:**

1. All free standing liquids will be removed from the pit at the start of the closure process. Liquids will be removed in a manner that the appropriate District Office approves including; recycled, reused, reclaimed, evaporated, and/or disposed of in a Division-approved facility.
2. The preferred method of closure for all temporary pits will be on-site closure by in-place burial, provided all the criteria in 19.15.17.13.B are met.
3. The surface owner shall be notified of WPX's proposed closure plan using a means that provides proof of notice (i.e. certified mail/retrun receipt requested)
4. Within six months of the "rig-off" status occurring WPX will ensure that the temporary pit is covered, recontoured and reseeding in progress.
5. Notice of Closure will be given to the Aztec District office between 72 hours and one week of the scheduled closure via email or phone. The notification of closure will include the following:
  - a. Operators Name (WPX)
  - b. Well Name and API Number
  - c. Location (USTR)
6. The pit liner shall be removed above "mud level" after stabilization. Removal of the liner will consist of manually or mechanically cutting the liner at the mud level and removing all remaining liner. Care will be taken to remove "all" of the liner (I.e. anchored material). All excessive liner will be disposed of at a licensed disposal facility (probably San Juan Regional Landfill operated by Waste Management under NMED Permit SWM-052426).
7. Solidification of the remaining pit contents shall be achieved by mixing non-waste containing, earthen material. The solidification process will be accomplished use a combination of natural drying and mechanical mixing. Pit contents will be mixed with non-waste, earthen material to a consistency that is deemed safe and stable. The mixing ratio shall not exceed 3 parts non-waste to 1 part pit contents.
8. A five-point composite sample will be taken of the pit using sampling tools and all samples tested per 19.15.17.13(B)(1)(b) NMAC. In the event that the criteria are not met (See Table 1), all contents will be handled per 19.15.17.13(B)(1)(a) (i.e. dig and haul to a Division-approved facility). Approval to haul will be requested of the Aztec District office prior to initiation.

Table 1: Closure Criteria for Temporary Pits in Non-sensitive Areas

Components	Testing Methods	Closure Limits (mg/Kg)
Benzene	EPA SW-846 Method 8021B or 8260B	0.2
BTEX	EPA SW-846 Method 8021B or 8260B	50
TPH	EPA SW-846 Method 8015 M(Full Range)* or Method 418.1	2500
GRO/DRO	EPA SW-846 Method 8015M (GRO/DRO)	500
Chlorides	EPA SW-846 Method 300.1	1000

\* Preferred method

9. Upon completion of solidification and testing, the pit area will be backfilled with non-waste earthen material compacted to native conditions to enable effective revegetation for successful evapotranspiration. A minimum of four feet of cover including replacement of one foot of suitable material to establish vegetation, or the background thickness of topsoil, whichever is greater.
10. Following cover, the site will be recontoured to meet the Surface Management Agency or surface owner requirements. Re-contouring will attempt to match fit, shape, line form, and texture of the surrounding geography. Re-shaping will include drainage control, prevent ponding, and minimize erosion. Natural drainages will be unimpeded and stormwater Best Management Practices (BMPs) will be used to aid in soil stabilization and protection surface water quality.
11. Notification will be sent to the Aztec District office when the reclaimed area is seeded.
12. WPX shall seed the disturbed areas the first growing season after the pit is covered. Seeding will be accomplished via drilling on the contour whenever practical, or by other Division-approved methods. Vegetative cover will equal 70% of the native perennial vegetative cover (un-impacted) consisting of at least three native plant species, including at least one grass, but not including noxious weeds, and maintained that cover through two successive growing seasons. Repeat seeding or planting will be continued until successful vegetative growth occurs. *Note: WPX assumes the seeding stipulations including mix and seeding methods specified by the Surface Management Agency (BLM, BOR, USFS, Tribal, etc.) or Land owner as part of a surface use agreement or APD are Division-approved methods unless notified by the Division of their unacceptability.*
13. The temporary pit will be located with a steel marker, no less than four inches in diameter, cemented in a hole three feet deep in the center of the on site burial upon the abandonment of all wells on the pad. The marker will be flush with the ground to allow access of the active well pad and for safety concerns. The marker will include a threaded collar to be used for future abandonment. The top of the marker will contain a welded steel 12" square plate that indicates the on site burial of the temporary pit. The plate will be easily removable and a four-foot tall riser will be threaded into the top of the collar marker and welded around the base with the operations information at the time of all wells on the pad abandoned. The information will include Operator Name, Lease Name, Well Name, and number, USTR, and an indicator that the marker is an onsite pit burial location.

UNITED STATES  
DEPARTMENT OF THE INTERIOR  
BUREAU OF LAND MANAGEMENT

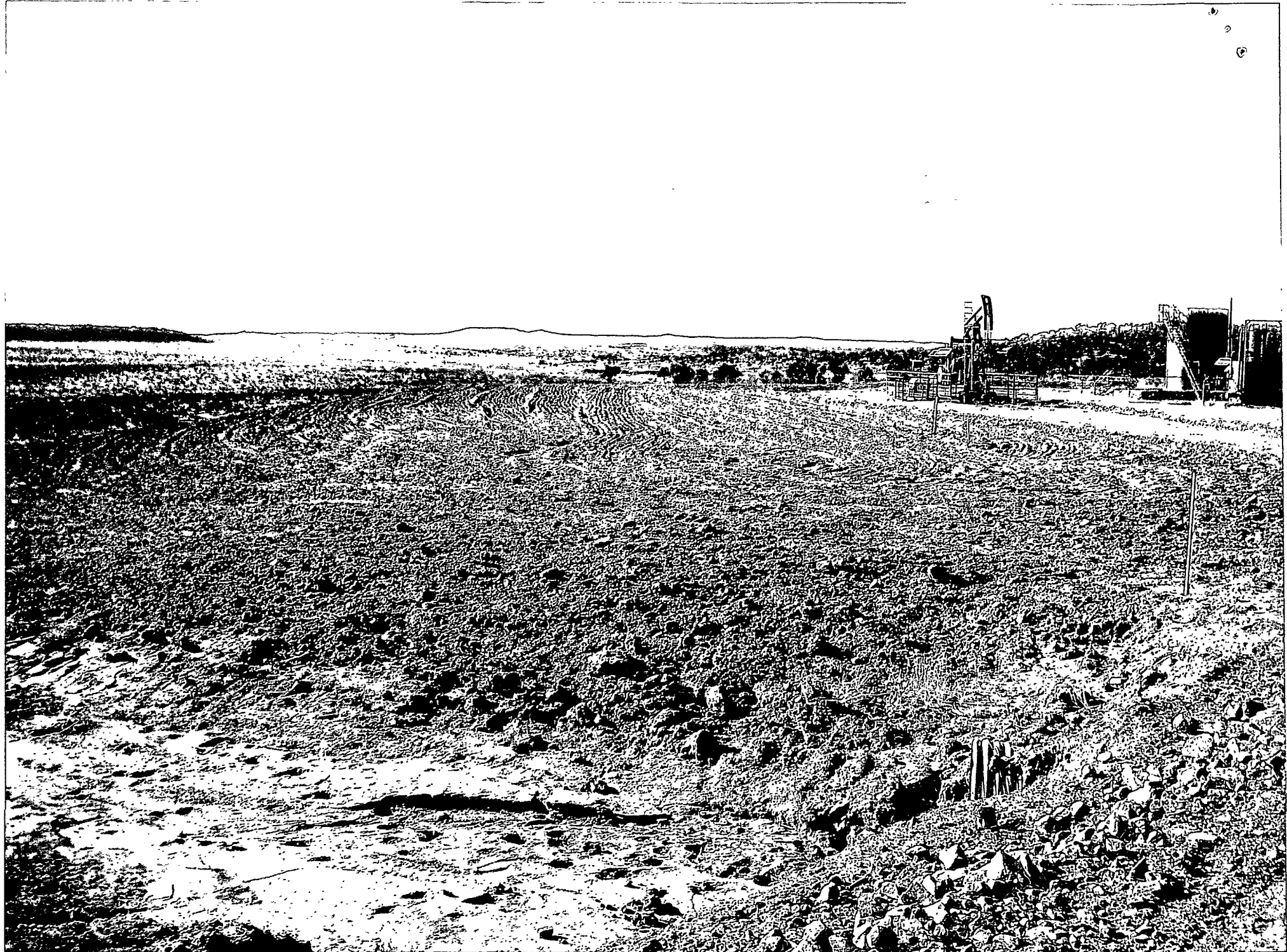
SUBMIT IN  
DUPLICATE

(See other instructions on  
reverse side)

FORM APPROVED  
OMB NO. 1004-0137  
Expires: February 28, 1995

<b>WELL COMPLETION OR RECOMPLETION REPORT AND LOG*</b>						5 LEASE DESIGNATION AND LEASE NO NMSF-078764	
						6 IF INDIAN, ALLOTTEE OR	
1a. TYPE OF WELL: <input type="checkbox"/> OIL WELL <input checked="" type="checkbox"/> GAS WELL <input type="checkbox"/> DRY <input type="checkbox"/> OTHER						7. UNIT AGREEMENT NAME  Rosa Unit	
b. TYPE OF COMPLETION: <input checked="" type="checkbox"/> NEW WELL <input type="checkbox"/> WORKOVER <input type="checkbox"/> DEEPEN <input type="checkbox"/> PLUG BACK <input type="checkbox"/> DIFF RESVR <input type="checkbox"/> OTHER							
2. NAME OF OPERATOR  WILLIAMS PRODUCTION COMPANY						8 FARM OR LEASE NAME, WELL NO Rosa Unit #321A	
3. ADDRESS AND TELEPHONE NO  P.O. Box 640, Aztec, NM 87410 (505) 634-4208						9 API WELL NO 30-039-29881	
4. LOCATION OF WELL (Report location clearly and in accordance with any State requirements)* At Surface: 1935' FSL & 480' FWL, Sec 20 (L), T31N, R5W At top production interval reported below: 231' FNL & 330' FWL, Sec 20 (E), T31N, R5W At total depth: Same						10. FIELD AND POOL, OR WILDCAT Basin Fruitland Coal	
						11. SEC., T., R., M., OR BLOCK AND SURVEY OR AREA SEC 20-31N-5W	
				14 PERMIT NO	DATE ISSUED	12 COUNTY OR Rio Arriba	13 STATE New Mexico
15 DATE SPUDDED 6-5-08	16. DATE T.D. REACHED 6-18-08	17 DATE COMPLETED (READY TO PRODUCE) 7-17-08		18 ELEVATIONS (DK, RKB, RT, GR, ETC.)* 6339' GR		19 ELEVATION CASINGHEAD	
20 TOTAL DEPTH, MD & TVD 3560' MD		21 PLUG, BACK T.D., MD & TVD 3560'		22. IF MULTICOMP., HOW MANY	23. INTERVALS DRILLED BY	ROTARY TOOLS x	CABLE TOOLS
24 PRODUCING INTERVAL(S), OF THIS COMPLETION - TOP, BOTTOM, NAME (MD AND TVD)* Basin Fruitland Coal: 3323' - 3460'						25 WAS DIRECTIONAL SURVEY MADE YES	
26 TYPE ELECTRIC AND OTHER LOGS RUN						27 WAS WELL CORED NO	
28 CASING REPORT (Report all strings set in well)							
CASING SIZE/GRADE		WEIGHT, LB./FT.		DEPTH SET (MD)		HOLE SIZE	
9-5/8", K-55		36.0#		332'		12-1/4"	
7", K-55		23.0#		3288'		8-3/4"	
29 LINER RECORD				30 TUBING RECORD			
SIZE	TOP (MD)	BOTTOM (MD)	SACKS CEMENT*	SCREEN (MD)	SIZE	DEPTH SET (MD)	PACKER SET (MD)
5-1/2", 17#, N-80	3189'	3467'	0 SX		2-7/8", 6.5#, J-55	3464'	
31 PERFORATION RECORD (Interval, size, and number)				32 ACID, SHOT, FRACTURE, CEMENT SQUEEZE, ETC			
				DEPTH INTERVAL (MD)	AMOUNT AND KIND OF MATERIAL USED		
<u>Basin Fruitland Coal - 3323' - 3460'</u>					Well was not fraced or acidized		
33 PRODUCTION							
DATE OF FIRST PRODUCTION		PRODUCTION METHOD (Flowing, gas lift, pumping-size and type of pump) Flowing				WELL STATUS (PRODUCING OR SI) SI - waiting on tie in	
DATE OF TEST 7-14-08	TESTED 10 hrs	CHOKE SIZE 2"	PROD'N FOR TEST PERIOD	OIL - BBL	GAS - MCF	WATER - BBL	GAS-OIL RATIO
FLOW TBG PRESS 0 oz	CASING PRESSURE 42 oz	CALCULATED 24-HOUR RATE		OIL - BBL	GAS - MCF 990 p/day	WATER - BBL	OIL GRAVITY-API (CORR.)
34 DISPOSITION OF GAS (Sold, used for fuel, vented, etc.) TO BE SOLD						TEST WITNESSED BY: AI Rector	
35 LIST OF ATTACHMENTS SUMMARY OF POROUS ZONES, WELLBORE DIAGRAM							
36 I hereby certify that the foregoing and attached information is complete and correct as determined from all available records							

SIGNED \_\_\_\_\_ TITLE Drig COM DATE 7-23-08



Exploration & Production  
San Juan Basin Operations  
720 So. Main / PO Box 640  
Aztec, NM 87410  
505-634-4200 / 505-634-4205 fax



## Temporary Pit Inspection

### FACILITY INFORMATION

Facility Name: ROSA UNIT #321-A	API #: 30-039-29881
---------------------------------	---------------------

Pit Type: X Drilling <input type="checkbox"/> Workover <input type="checkbox"/> Cavitation	Inspection: X Daily <input type="checkbox"/> Weekly <input type="checkbox"/> Monthly
--	--

Pit Liner intact (no visible tears)	X Yes <input type="checkbox"/> No If No, Report to EH&S immediately	Date / Time Reported:
Pit Properly Fenced (no fence on rig side if on site)	X Yes <input type="checkbox"/> No <input type="checkbox"/> Not Required (if site fully fenced)	
Pit Slopes intact	X Yes <input type="checkbox"/> No	
Adequate freeboard (liquid level 2 <u>vertical</u> feet from berm top)	X Yes <input type="checkbox"/> No <input type="checkbox"/> Not Applicable	
Free oil or sheen present on pit	<input type="checkbox"/> Yes X No	
Flare Pit free of liquids	X Yes <input type="checkbox"/> No <input type="checkbox"/> Not Applicable	
Comments:		
Inspector Signature: WILLIE MOCK		
Printed Name: WILLIE MOCK		
Title: DRILLING CONSULTANT		
Date: 6/18/2008 Phone: 505-793-0528		

Record Retention: Submit with Closure  
File: EH&S

Exploration & Production  
San Juan Basin Operations  
720 So. Main / PO Box 640  
Aztec, NM 87410  
505-634-4200 / 505-634-4205 fax



## Temporary Pit Inspection

### FACILITY INFORMATION

<b>Facility Name:</b> Rosa Unit #321-A	<b>API #:</b> 30-039-29881
--	----------------------------

<b>Pit Type:</b> <input checked="" type="checkbox"/> Drilling <input type="checkbox"/> Workover <input type="checkbox"/> Cavitation	<b>Inspection:</b> <input checked="" type="checkbox"/> Daily <input type="checkbox"/> Weekly <input type="checkbox"/> Monthly
---	---

Pit Liner intact (no visible tears)	<input checked="" type="checkbox"/> Yes <input type="checkbox"/> No If No, Report to EH&S immediately	Date / Time Reported:
Pit Properly Fenced (no fence on rig side if on site)	<input checked="" type="checkbox"/> Yes <input type="checkbox"/> No <input type="checkbox"/> Not Required (if site fully fenced)	
Pit Slopes intact	<input checked="" type="checkbox"/> Yes <input type="checkbox"/> No	
Adequate freeboard (liquid level 2 <u>vertical</u> feet from berm top)	<input checked="" type="checkbox"/> Yes <input type="checkbox"/> No <input type="checkbox"/> Not Applicable	
Free oil or sheen present on pit	<input type="checkbox"/> Yes <input checked="" type="checkbox"/> No	
Flare Pit free of liquids	<input checked="" type="checkbox"/> Yes <input type="checkbox"/> No <input type="checkbox"/> Not Applicable	
Comments: WATER TRUCK PULLED OIL OFF TOP OF WATER IN PIT.		
Inspector Signature: Willie Mock		
Printed Name: Willie Mock		
Title: Drilling Consultant		
Date: 6/20/08 Phone: 505 793-0528		

Record Retention: Submit with Closure  
File: EH&S

Exploration & Production  
San Juan Basin Operations  
720 So. Main / PO Box 640  
Aztec, NM 87410  
505-634-4200 / 505-634-4205 fax



## Temporary Pit Inspection

### FACILITY INFORMATION

<b>Facility Name:</b> Rosa 321A	<b>API #:</b>
---------------------------------	---------------

<b>Pit Type:</b> <input type="checkbox"/> Drilling <input type="checkbox"/> Workover <input checked="" type="checkbox"/> Cavitation	<b>Inspection:</b> <input type="checkbox"/> Daily (Rig) : <input checked="" type="checkbox"/> Weekly (Tech)
---	---

Pit Liner intact (no visible tears)	: X Yes <input type="checkbox"/> No If No, Report to EH&S immediately	Date / Time Reported:
Pit Properly Fenced (no fence on rig side if on site)	: <input type="checkbox"/> Yes <input checked="" type="checkbox"/> No <input type="checkbox"/> Not Required (if site fully fenced)	
Pit Slopes intact	: X Yes <input type="checkbox"/> No	
Adequate freeboard (liquid level 2 vertical feet from berm top)	: X Yes <input type="checkbox"/> No <input type="checkbox"/> Not Applicable	
Free oil or sheen present on pit	: X Yes : <input type="checkbox"/> No	
Flare Pit free of liquids	: <input type="checkbox"/> Yes <input checked="" type="checkbox"/> No <input type="checkbox"/> Not Applicable	
Comments: Pit has 15 to 20 bbl water at back side. Lots of coal finds due to cavitation. Pit is completely fenced but needs work on rig side. Not cattle safe.		
Inspector Signature: Art L. Alsup		
Printed Name: Art L. Alsup		
Title:		
Date: 07-23-08 Phone: 505-947-9276		

Record Retention: Submit with Closure  
File: EH&S Well Files

Exploration & Production  
San Juan Basin Operations

720 So. Main / PO Box 640  
Aztec, NM 87410  
505-634-4200 / 505-634-4205 fax



### Temporary Pit Inspection

#### FACILITY INFORMATION

Facility Name: Rosa 321A	API #:
--------------------------	--------

Pit Type: <input type="checkbox"/> Drilling <input type="checkbox"/> Workover <input checked="" type="checkbox"/> Cavitation	Inspection: <input type="checkbox"/> Daily (Rig) : <input checked="" type="checkbox"/> Weekly (Tech)
--	--

Pit Liner intact (no visible tears)	: <input checked="" type="checkbox"/> Yes <input type="checkbox"/> No If No, Report to EH&S immediately	Date / Time Reported:
Pit Properly Fenced (no fence on rig side if on site)	: <input type="checkbox"/> Yes <input checked="" type="checkbox"/> No <input type="checkbox"/> Not Required (if site fully fenced)	
Pit Slopes intact	: <input checked="" type="checkbox"/> Yes <input type="checkbox"/> No	
Adequate freeboard (liquid level 2 <u>vertical</u> feet from berm top)	: <input checked="" type="checkbox"/> Yes <input type="checkbox"/> No <input type="checkbox"/> Not Applicable	
Free oil or sheen present on pit	: <input checked="" type="checkbox"/> Yes : <input type="checkbox"/> No	
Flare Pit free of liquids	: <input type="checkbox"/> Yes <input checked="" type="checkbox"/> No <input type="checkbox"/> Not Applicable	
Comments: Pit has 15 to 20 bbl water at back side. Lots of coal finds due to cavitation. Pit is completely fenced but needs work on rig side. Not cattle safe.		
Inspector Signature: Art L. Alsup		
Printed Name: Art L. Alsup		
Title:		
Date: 07-30-08 Phone: 505-947-9276		

Record Retention: Submit with Closure  
File: EH&S Well Files



District I  
1625 N. French Dr., Hobbs, NM 88240  
District II  
1301 W. Grand Avenue, Artesia, NM 88210  
District III  
1000 Rio Brazos Road, Aztec, NM 87410  
District IV  
1220 S. St. Francis Dr., Santa Fe, NM 87505

State of New Mexico  
Energy Minerals and Natural Resources

Oil Conservation Division  
1220 South St. Francis Dr.  
Santa Fe, NM 87505

Form C-141  
Revised October 10, 2003

Submit 2 Copies to appropriate  
District Office in accordance  
with Rule 116 on back  
side of form

**Release Notification and Corrective Action**

**OPERATOR**

☐ Initial Report ☒ Final Report

Name of Company WILLIAMS PRODUCTION, LLC	Contact Myke Lane	
Address P.O. BOX 640, AZTEC, NM 87410	Telephone No. (505) 634-4219	
Facility Name Rosa Unit #321A	Facility Type Well Site	
Surface Owner Federal	Mineral Owner	Lease No.

**LOCATION OF RELEASE**

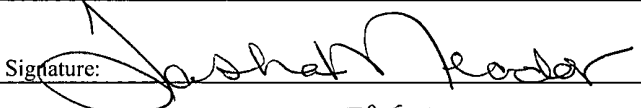
Unit Letter L	Section 20	Township 31N	Range 5W	Feet from the	North/South Line	Feet from the	East/West Line	County
------------------	---------------	-----------------	-------------	---------------	------------------	---------------	----------------	--------

Latitude 36.88288 Longitude -107.3928724

**NATURE OF RELEASE**

Type of Release No Release Detected NA	Volume of Release NA	Volume Recovered NA
Source of Release NA	Date and Hour of Occurrence	Date and Hour of Discovery NA
Was Immediate Notice Given? <input type="checkbox"/> Yes <input type="checkbox"/> No <input checked="" type="checkbox"/> Not Required	If YES, To Whom? NA	
By Whom?	Date and Hour	
Was a Watercourse Reached? <input type="checkbox"/> Yes <input checked="" type="checkbox"/> No	If YES, Volume Impacting the Watercourse. NA	
If a Watercourse was Impacted, Describe Fully.* NA		
Describe Cause of Problem and Remedial Action Taken.*  NA		
Describe Area Affected and Cleanup Action Taken.*  NA		

I hereby certify that the information given above is true and complete to the best of my knowledge and understand that pursuant to NMOCD rules and regulations all operators are required to report and/or file certain release notifications and perform corrective actions for releases which may endanger public health or the environment. The acceptance of a C-141 report by the NMOCD marked as "Final Report" does not relieve the operator of liability should their operations have failed to adequately investigate and remediate contamination that pose a threat to ground water, surface water, human health or the environment. In addition, NMOCD acceptance of a C-141 report does not relieve the operator of responsibility for compliance with any other federal, state, or local laws and/or regulations.

Signature: 		<b>OIL CONSERVATION DIVISION</b>	
Printed Name: <del>Michael H. Lane</del> TASHA MEADOR		Approved by District Supervisor:	
Title: EH&S Specialist		Approval Date:	Expiration Date:
E-mail Address: myke.lane@williams.com		Conditions of Approval:	
Date: 1/29/10 Phone: (505) 634-4219		Attached <input type="checkbox"/>	

\* Attach Additional Sheets If Necessary

**WILLIAMS PRODUCTION  
TEMP PIT CLOSURE REPORT ADDENDUM  
ROSA UNIT 321A**

Req #

- 1 Date & How free standing liquids removed in following manner: 8/4/2008  
Liquids removed by vacuum truck and hauled to Basin Disposal, Permit # NM 01-0005
- 3 Return receipt sent & received from surface owner: Copy Attached
- 4 Rig off location on following date: 7/19/2008  
Pit covered on following date: 9/19/2008  
Reseeding started/scheduled for following date: Spring/Fall 2009  
Date and mix to follow BLM/USFS COAs in APD per BLM:FFO/NMOCD MOU dated 5/4/09.
- 6 Pit liner removed on following date: 9/16/2008  
Pit liner removed by following company: Adobe Construction  
  
Pit liner removed in following manner:  
Cut liner above mud level after stabilization by manually &/or mechanically cutting liner. Removed all  
anchored material on date given.  
Facility where Pit liner disposed: S.J. Regional Landfill, NMED Permit SWM-052426
- 7 Solidification process accomplished in following manner:  
  
Adobe construction used combination of natural drying & mechanical mixing. Pit contents were mixed with  
non-waste, earthen material to a consistency that is safe & stable. The mixing ratio has not exceeded 3  
parts non-waste to 1 part pit contents.
- 8 Five point composite sample provided: Envirotech Results Attached
- 9 Testing of earth by following company: Envirotech, Inc.  
  
Material & method used for solidification, non-waste earthen material:  
Grading & backfilling area with approximately 4' of soils and earthen materials recovered during site  
construction, to one foot consisting of topsoil.
- 10 Re-contouring to match surrounding geography done in following manner (using BMP's):

## ROSA UNIT 321A

Reestablish drainage and contours to approximately match previous topography meeting Conditions of Approval in APD and as specified by Surface Management Agency Inspectors.

---

- 11 Sundry (C103) to NMOCD when area seeded and seed mix used:  
Williams will comply with Surface Management Agency reseeding requirements in COAs of the APD for the referenced well, per BLM:FFO/NMOCD MOU dated 5/4/09.
- 

- 12 Date pit was covered: 9/19/2008
- 13 Company setting steel marker on site: Adobe Construction
- Date marker set: N/A
- Type cmt & depth of cmt to place marker: 2 sx Pre-mixed concrete @ 4' depth
- Type of marker used: (check one) Reopened
- Pertinent information on marker (operator, lease, well name/#, S-T-R-UL):  
N/A
- 

### Attached information :

- \*\* Sample results from Form C141 (Release Notification & Corrective Action) Attached
- Date & time release occurred: NA
- \*\* C105 (Completion Rpt) w/Applicable Pit Information Attached
-

Submit To Appropriate District Office Two Copies District I 1625 N. French Dr., Hobbs, NM 88240 District II 1301 W. Grand Avenue, Artesia, NM 88210 District III 1000 Rio Brazos Rd., Aztec, NM 87410 District IV 1220 S. St. Francis Dr., Santa Fe, NM 87505	<b>State of New Mexico</b> <b>Energy, Minerals and Natural Resources</b>  <b>Oil Conservation Division</b> <b>1220 South St. Francis Dr.</b> <b>Santa Fe, NM 87505</b>	<b>Form C-105</b> July 17, 2008								
		1. WELL API NO. <div style="text-align: right;">30-039-29881</div>								
		2. Type of Lease <input type="checkbox"/> STATE <input type="checkbox"/> FEE <input checked="" type="checkbox"/> FED/INDIAN								
		3. State Oil & Gas Lease No. NMSF-078764								
<b>WELL COMPLETION OR RECOMPLETION REPORT AND LOG</b>										
4. Reason for filing:  <input type="checkbox"/> <b>COMPLETION REPORT</b> (Fill in boxes #1 through #31 for State and Fee wells only)  <input checked="" type="checkbox"/> <b>C-144 CLOSURE ATTACHMENT</b> (Fill in boxes #1 through #9, #15 Date Rig Released and #32 and/or #33; attach this and the plat to the C-144 closure report in accordance with 19.15.17.13.K NMAC)		5. Lease Name or Unit Agreement Name <div style="text-align: right;">Rosa Unit</div>								
		6. Well Number:  <div style="text-align: right;">Rosa Unit #321A</div>								
7. Type of Completion: <input checked="" type="checkbox"/> NEW WELL <input type="checkbox"/> WORKOVER <input type="checkbox"/> DEEPENING <input type="checkbox"/> PLUGBACK <input type="checkbox"/> DIFFERENT RESERVOIR <input type="checkbox"/> OTHER										
8. Name of Operator    WILLIAMS PRODUCTION, LLC		9. OGRID    120782								
10. Address of Operator    P.O. BOX 640    AZTEC, NM 87410		11. Pool name or Wildcat								
12. Location	Unit Ltr	Section	Township	Range	Lot	Feet from the	N/S Line	Feet from the	E/W Line	County
Surface:										
BH:										
13. Date Spudded	14. Date T.D. Reached	15. Date Rig Released 7/19/2008		16. Date Completed (Ready to Produce)			17. Elevations (DF and RKB, RT, GR, etc.)			
18. Total Measured Depth of Well		19. Plug Back Measured Depth		20. Was Directional Survey Made?			21. Type Electric and Other Logs Run			
22. Producing Interval(s), of this completion - Top, Bottom, Name										
<b>23. CASING RECORD (Report all strings set in well)</b>										
CASING SIZE		WEIGHT LB./FT.		DEPTH SET		HOLE SIZE		CEMENTING RECORD		AMOUNT PULLED
24. LINER RECORD						25. TUBING RECORD				
SIZE	TOP	BOTTOM	SACKS CEMENT	SCREEN		SIZE	DEPTH SET	PACKER SET		
26. Perforation record (interval, size, and number)						27. ACID, SHOT, FRACTURE, CEMENT, SQUEEZE, ETC.				
						DEPTH INTERVAL		AMOUNT AND KIND MATERIAL USED		
<b>28. PRODUCTION</b>										
Date First Production		Production Method ( <i>Flowing, gas lift, pumping - Size and type pump</i> )				Well Status ( <i>Prod. or Shut-in</i> )				
Date of Test	Hours Tested	Choke Size	Prod'n For Test Period	Oil - Bbl	Gas - MCF	Water - Bbl.	Gas - Oil Ratio			
Flow Tubing Press.	Casing Pressure	Calculated 24-Hour Rate	Oil - Bbl.	Gas - MCF	Water - Bbl.	Oil Gravity - API - ( <i>Corr.</i> )				
29. Disposition of Gas ( <i>Sold, used for fuel, vented, etc.</i> )							30. Test Witnessed By			
31. List Attachments										
32. If a temporary pit was used at the well, attach a plat with the location of the temporary pit. Attached										
33. If an on-site burial was used at the well, report the exact location of the on-site burial:										
Latitude 36.88288    Longitude -107.3928724    NAD 1927    X 1983										
<i>I hereby certify that the information shown on both sides of this form is true and complete to the best of my knowledge and belief</i>										
Signature <i>Justin M. Moore</i>		Printed Name <i>JASHTAMPORE</i>		Title <i>EH&amp;S SPECIALIST</i>		Date <i>2-2-10</i>				
E-mail Address:										

District I  
PO Box 1980, Hobbs, NM 88241-1980

District II  
PO Drawer DD, Artesia, NM 88211-0719

District III  
1000 Rio Brazos Rd., Aztec, NM 87410

District IV  
PO Box 2088, Santa Fe, NM 87504-2088

State of New Mexico  
Energy, Minerals & Natural Resources Department

OIL CONSERVATION DIVISION  
PO Box 2088  
Santa Fe, NM 87504-2088

Form C-102

Revised February 21, 1994

Instructions on back  
Submit to Appropriate District Office  
State Lease - 4 Copies  
Fee Lease - 3 Copies

☐ AMENDED REPORT

RCVD JUN 7 '12

WELL LOCATION AND ACREAGE DEDICATION PLAT OIL CONS. DIV.

*API Number 030-039-29881		*Pool Code 71629	*Pool Name BASIN FRUITLAND COAST. 3
*Property Code 17033	*Property Name ROSA UNIT		*Well Number 321A
*OGRID No. 120782	*Operator Name WILLIAMS PRODUCTION COMPANY		*Elevation 6339'

<sup>10</sup> Surface Location

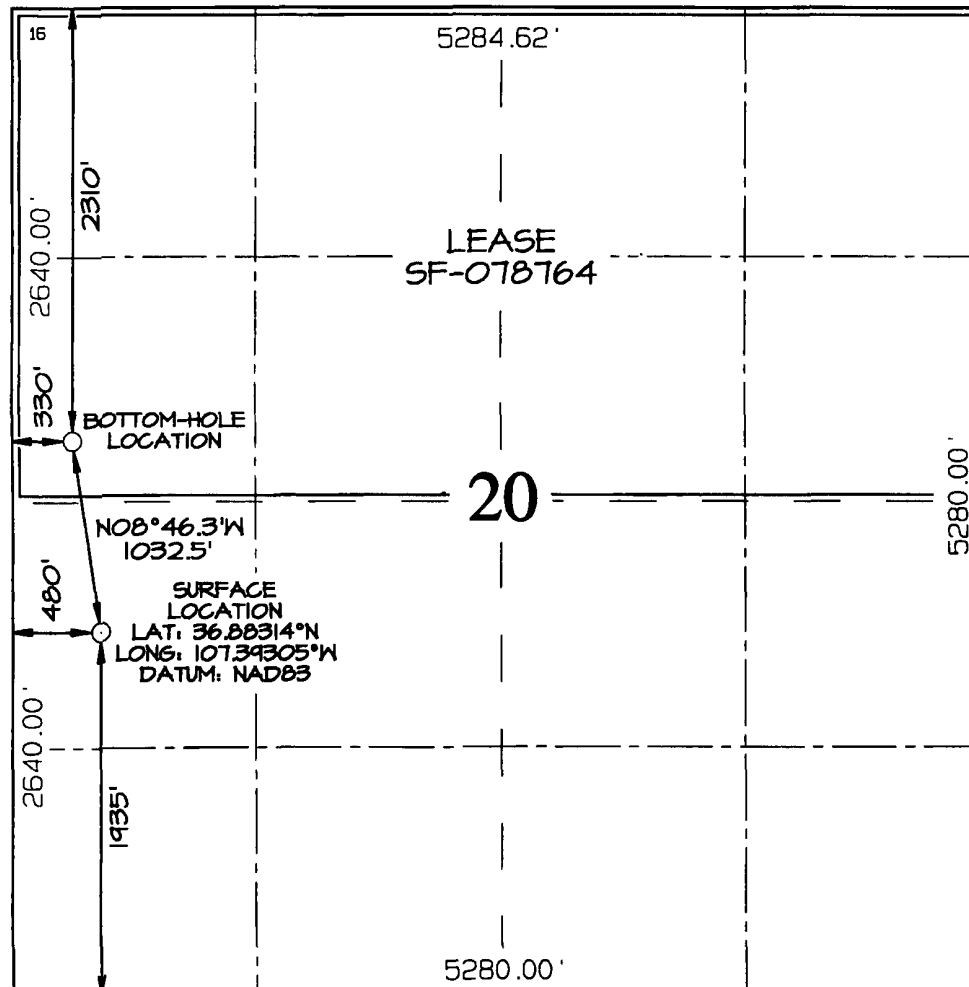
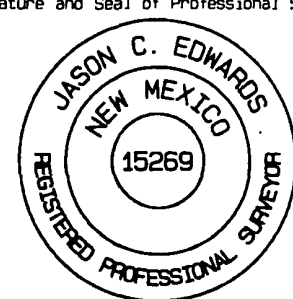
UL or lot no.	Section	Township	Range	Lot Idn	Feet from the	North/South line	Feet from the	East/West line	County
L	20	31N	5W		1935	SOUTH	480	WEST	RIO ARriba

<sup>11</sup> Bottom Hole Location If Different From Surface

UL or lot no.	Section	Township	Range	Lot Idn	Feet from the	North/South line	Feet from the	East/West line	County
E	20	31N	5W		2310	NORTH	330	WEST	RIO ARriba

<sup>12</sup> Dedicated Acres 320.0 Acres - (N/2)	<sup>13</sup> Joint or Infill	<sup>14</sup> Consolidation Code	<sup>15</sup> Order No.
--	-------------------------------	----------------------------------	-------------------------

NO ALLOWABLE WILL BE ASSIGNED TO THIS COMPLETION UNTIL ALL INTERESTS HAVE BEEN CONSOLIDATED  
OR A NON-STANDARD UNIT HAS BEEN APPROVED BY THE DIVISION

	<p><sup>17</sup> OPERATOR CERTIFICATION</p> <p>I hereby certify that the information contained herein is true and complete to the best of my knowledge and belief</p> <p>Signature _____</p> <p>Printed Name _____</p> <p>Title _____</p> <p>Date _____</p> <p><sup>18</sup> SURVEYOR CERTIFICATION</p> <p>I hereby certify that the well location shown on this plat was plotted from field notes of actual surveys made by me or under my supervision, and that the same is true and correct to the best of my belief</p> <p>Survey Date: OCTOBER 4, 2005</p> <p>Signature and Seal of Professional Surveyor</p>  <p><b>JASON C. EDWARDS</b> Certificate Number 15269</p>
--	--

WIPX ENERGY  
ROSA UNIT #321A  
T3N R5W  
UNIT L SEC 20  
RIO ARTECO, CO.  
IN PLACE BURIAL