

## District I

1625 N French Dr, Hobbs, NM 88240

## District II

1301 W Grand Ave, Artesia, NM 88210

## District III

1000 Rio Brazos Rd, Aztec, NM 87410

## District IV

1220 S St Francis Dr, Santa Fe, NM 87505

State of New Mexico  
Energy Minerals and Natural ResourcesDepartment  
Oil Conservation Division  
1220 South St. Francis Dr.  
Santa Fe, NM 87505

Form C-144

July 21, 2008

For temporary pits, closed-loop systems, and below-grade tanks, submit to the appropriate NMOCD District Office

For permanent pits and exceptions submit to the Santa Fe Environmental Bureau office and provide a copy to the appropriate NMOCD District Office

Pit, Closed-Loop System, Below-Grade Tank, or  
Proposed Alternative Method Permit or Closure Plan Application

Type of action.

- ☐ Permit of a pit, closed-loop system, below-grade tank, or proposed alternative method
- ☒ Closure of a pit, closed-loop system, below-grade tank, or proposed alternative method
- ☐ Modification to an existing permit
- ☐ Closure plan only submitted for an existing permitted or non-permitted pit, closed-loop system, below-grade tank, or proposed alternative method

**Instructions: Please submit one application (Form C-144) per individual pit, closed-loop system, below-grade tank or alternative request**

Please be advised that approval of this request does not relieve the operator of liability should operations result in pollution of surface water, ground water or the environment. Nor does approval relieve the operator of its responsibility to comply with any other applicable governmental authority's rules, regulations or ordinances

1  
Operator: **Burlington Resources Oil & Gas Company, LP** OGRID#: **14538**  
Address: **P.O. Box 4289, Farmington, NM 87499**  
Facility or well name: **ATLANTIC B COM 9M**  
API Number: **30-045-35040** OCD Permit Number: \_\_\_\_\_  
U/L or Qtr/Qtr: **N(SE/SW)** Section: **34** Township: **31N** Range: **10W** County: **SAN JUAN**  
Center of Proposed Design Latitude: **36.85033** °N Longitude: **107.87397** °W NAD: ☐ 1927 ☒ 1983  
Surface Owner: ☐ Federal ☐ State ☒ Private ☐ Tribal Trust or Indian Allotment

2  
☒ **Pit:** Subsection F or G of 19 15 17 11 NMAC  
Temporary ☒ Drilling ☐ Workover  
☐ Permanent ☐ Emergency ☐ Cavitation ☐ P&A  
☒ Lined ☐ Unlined Liner type Thickness **20** mil ☒ LLDPE ☐ HDPE ☐ PVC ☐ Other \_\_\_\_\_  
☒ String-Reinforced  
Liner Seams ☒ Welded ☒ Factory ☐ Other \_\_\_\_\_ Volume **7700** bbl Dimensions L **120'** x W **55'** x D **12'**

3  
☐ **Closed-loop System:** Subsection H of 19 15 17 11 NMAC  
Type of Operation ☐ P&A ☐ Drilling a new well ☐ Workover or Drilling (Applies to activities which require prior approval of a permit or notice of intent)  
☐ Drying Pad ☐ Above Ground Steel Tanks ☐ Haul-off Bins ☐ Other \_\_\_\_\_  
☐ Lined ☐ Unlined Liner type Thickness \_\_\_\_\_ mil ☐ LLDPE ☐ HDPE ☐ PVD ☐ Other \_\_\_\_\_  
Liner Seams ☐ Welded ☐ Factory ☐ Other \_\_\_\_\_

4  
☐ **Below-grade tank:** Subsection I of 19 15 17 11 NMAC  
Volume \_\_\_\_\_ bbl Type of fluid \_\_\_\_\_  
Tank Construction material \_\_\_\_\_  
☐ Secondary containment with leak detection ☐ Visible sidewalls, liner, 6-inch lift and automatic overflow shut-off  
☐ Visible sidewalls and liner ☐ Visible sidewalls only ☐ Other \_\_\_\_\_  
Liner Type Thickness \_\_\_\_\_ mil ☐ HDPE ☐ PVC ☐ Other \_\_\_\_\_

5  
☐ **Alternative Method:**  
Submittal of an exception request is required. Exceptions must be submitted to the Santa Fe Environmental Bureau office for consideration of approval

6	<p><b>Fencing:</b> Subsection D of 19 15 17 11 NMAC (<i>Applies to permanent pit, temporary pits, and below-grade tanks</i>)</p> <p><input type="checkbox"/> Chain link, six feet in height, two strands of barbed wire at top (<i>Required if located within 1000 feet of a permanent residence, school, hospital, institution or church</i>)</p> <p><input type="checkbox"/> Four foot height, four strands of barbed wire evenly spaced between one and four feet</p> <p><input type="checkbox"/> Alternate Please specify _____</p>
7	<p><b>Netting:</b> Subsection E of 19 15 17 11 NMAC (<i>Applies to permanent pits and permanent open top tanks</i>)</p> <p><input type="checkbox"/> Screen <input type="checkbox"/> Netting <input type="checkbox"/> Other _____</p> <p><input type="checkbox"/> Monthly inspections (<i>If netting or screening is not physically feasible</i>)</p>
8	<p><b>Signs:</b> Subsection C of 19 15 17 11 NMAC</p> <p><input type="checkbox"/> 12" X 24", 2" lettering, providing Operator's name, site location, and emergency telephone numbers</p> <p><input checked="" type="checkbox"/> Signed in compliance with 19 15 3 103 NMAC</p>
9	<p><b>Administrative Approvals and Exceptions:</b></p> <p>Justifications and/or demonstrations of equivalency are required Please refer to 19 15 17 NMAC for guidance</p> <p><i>Please check a box if one or more of the following is requested, if not leave blank:</i></p> <p><input type="checkbox"/> Administrative approval(s) Requests must be submitted to the appropriate division district of the Santa Fe Environmental Bureau office for consideration of approval (Fencing/BGT Liner)</p> <p><input type="checkbox"/> Exception(s) Requests must be submitted to the Santa Fe Environmental Bureau office for consideration of approval</p>
10	<p><b>Siting Criteria (regarding permitting) 19.15.17.10 NMAC</b></p> <p><i>Instructions: The applicant must demonstrate compliance for each siting criteria below in the application. Recommendations of acceptable source material are provided below. Requests regarding changes to certain siting criteria may require administrative approval from the appropriate district office or may be considered an exception which must be submitted to the Santa Fe Environmental Bureau Office for consideration of approval. Applicant must attach justification for request. Please refer to 19.15.17.10 NMAC for guidance. Siting criteria does not apply to drying pads or above grade-tanks associated with a closed-loop system.</i></p> <p><b>Ground water is less than 50 feet below the bottom of the temporary pit, permanent pit, or below-grade tank.</b></p> <p>- NM Office of the State Engineer - iWATERS database search; USGS; Data obtained from nearby wells</p> <p><input type="checkbox"/> Yes <input type="checkbox"/> No</p> <p><b>Within 300 feet of a continuously flowing watercourse, or 200 feet of any other watercourse, lakebed, sinkhole, or playa lake (measured from the ordinary high-water mark).</b></p> <p>- Topographic map; Visual inspection (certification) of the proposed site</p> <p><input type="checkbox"/> Yes <input type="checkbox"/> No</p> <p><b>Within 300 feet from a permanent residence, school, hospital, institution, or church in existence at the time of initial application.</b></p> <p>(<i>Applies to temporary, emergency, or cavitation pits and below-grade tanks</i>)</p> <p>- Visual inspection (certification) of the proposed site, Aerial photo; Satellite image</p> <p><input type="checkbox"/> Yes <input type="checkbox"/> No</p> <p><input type="checkbox"/> NA</p> <p><b>Within 1000 feet from a permanent residence, school, hospital, institution, or church in existence at the time of initial application.</b></p> <p>(<i>Applied to permanent pits</i>)</p> <p>- Visual inspection (certification) of the proposed site, Aerial photo; Satellite image</p> <p><input type="checkbox"/> Yes <input type="checkbox"/> No</p> <p><input type="checkbox"/> NA</p> <p><b>Within 500 horizontal feet of a private, domestic fresh water well or spring that less than five households use for domestic or stock watering purposes, or within 1000 horizontal feet of any other fresh water well or spring, in existence at the time of initial application.</b></p> <p>- NM Office of the State Engineer - iWATERS database search; Visual inspection (certification) of the proposed site.</p> <p><input type="checkbox"/> Yes <input type="checkbox"/> No</p> <p><b>Within incorporated municipal boundaries or within a defined municipal fresh water well field covered under a municipal ordinance adopted pursuant to NMSA 1978, Section 3-27-3, as amended</b></p> <p>- Written confirmation or verification from the municipality. Written approval obtained from the municipality</p> <p><input type="checkbox"/> Yes <input type="checkbox"/> No</p> <p><b>Within 500 feet of a wetland.</b></p> <p>- US Fish and Wildlife Wetland Identification map, Topographic map, Visual inspection (certification) of the proposed site</p> <p><input type="checkbox"/> Yes <input type="checkbox"/> No</p> <p><b>Within the area overlying a subsurface mine.</b></p> <p>- Written confirmation or verification or map from the NM EMNRD - Mining and Mineral Division</p> <p><input type="checkbox"/> Yes <input type="checkbox"/> No</p> <p><b>Within an unstable area.</b></p> <p>- Engineering measures incorporated into the design; NM Bureau of Geology &amp; Mineral Resources; USGS; NM Geological Society; Topographic map</p> <p><input type="checkbox"/> Yes <input type="checkbox"/> No</p> <p><b>Within a 100-year floodplain</b></p> <p>- FEMA map</p> <p><input type="checkbox"/> Yes <input type="checkbox"/> No</p>

11

**Temporary Pits, Emergency Pits and Below-grade Tanks Permit Application Attachment Checklist** Subsection B of 19 15 17 9 NMAC*Instructions: Each of the following items must be attached to the application. Please indicate, by a check mark in the box, that the documents are attached.*

- ☐ Hydrogeologic Report (Below-grade Tanks) - based upon the requirements of Paragraph (4) of Subsection B of 19 15 17 9 NMAC
- ☐ Hydrogeologic Data (Temporary and Emergency Pits) - based upon the requirements of Paragraph (2) of Subsection B of 19 15 17 9 NMAC
- ☐ Siting Criteria Compliance Demonstrations - based upon the appropriate requirements of 19 15 17 10 NMAC
- ☐ Design Plan - based upon the appropriate requirements of 19 15 17 11 NMAC
- ☐ Operating and Maintenance Plan - based upon the appropriate requirements of 19 15 17 12 NMAC
- ☐ Closure Plan (Please complete Boxes 14 through 18, if applicable) - based upon the appropriate requirements of Subsection C of 19 15 17 9 NMAC and 19 15 17 13 NMAC

☐ Previously Approved Design (attach copy of design)      API \_\_\_\_\_ or Permit \_\_\_\_\_

12

**Closed-loop Systems Permit Application Attachment Checklist:** Subsection B of 19 15 17 9 NMAC*Instructions: Each of the following items must be attached to the application. Please indicate, by a check mark in the box, that the documents are attached.*

- ☐ Geologic and Hydrogeologic Data (only for on-site closure) - based upon the requirements of Paragraph (3) of Subsection B of 19 15 17 9 NMAC
- ☐ Siting Criteria Compliance Demonstrations (only for on-site closure) - based upon the appropriate requirements of 19 15 17 10 NMAC
- ☐ Design Plan - based upon the appropriate requirements of 19 15 17 11 NMAC
- ☐ Operating and Maintenance Plan - based upon the appropriate requirements of 19 15 17 12 NMAC
- ☐ Closure Plan (Please complete Boxes 14 through 18, if applicable) - based upon the appropriate requirements of Subsection C of 19 15 17 9 NMAC and 19 15 17 13 NMAC

☐ Previously Approved Design (attach copy of design)      API \_\_\_\_\_

☐ Previously Approved Operating and Maintenance Plan      API \_\_\_\_\_

13

**Permanent Pits Permit Application Checklist:** Subsection B of 19 15 17 9 NMAC*Instructions: Each of the following items must be attached to the application. Please indicate, by a check mark in the box, that the documents are attached.*

- ☐ Hydrogeologic Report - based upon the requirements of Paragraph (1) of Subsection B of 19 15 17 9 NMAC
- ☐ Siting Criteria Compliance Demonstrations - based upon the appropriate requirements of 19.15 17 10 NMAC
- ☐ Climatological Factors Assessment
- ☐ Certified Engineering Design Plans - based upon the appropriate requirements of 19 15 17 11 NMAC
- ☐ Dike Protection and Structural Integrity Design - based upon the appropriate requirements of 19 15 17 11 NMAC
- ☐ Leak Detection Design - based upon the appropriate requirements of 19 15.17 11 NMAC
- ☐ Liner Specifications and Compatibility Assessment - based upon the appropriate requirements of 19 15 17 11 NMAC
- ☐ Quality Control/Quality Assurance Construction and Installation Plan
- ☐ Operating and Maintenance Plan - based upon the appropriate requirements of 19 15 17 12 NMAC
- ☐ Freeboard and Overtopping Prevention Plan - based upon the appropriate requirements of 19 15 17.11 NMAC
- ☐ Nuisance or Hazardous Odors, including H<sub>2</sub>S, Prevention Plan
- ☐ Emergency Response Plan
- ☐ Oil Field Waste Stream Characterization
- ☐ Monitoring and Inspection Plan
- ☐ Erosion Control Plan
- ☐ Closure Plan - based upon the appropriate requirements of Subsection C of 19 15 17 9 NMAC and 19 15 17 13 NMAC

14

**Proposed Closure:** 19 15 17 13 NMAC*Instructions: Please complete the applicable boxes, Boxes 14 through 18, in regards to the proposed closure plan.*

Type    ☐ Drilling    ☐ Workover    ☐ Emergency    ☐ Cavitation    ☐ P&A    ☐ Permanent Pit    ☐ Below-grade Tank    ☐ Closed-loop System

☐ Alternative

Proposed Closure Method    ☐ Waste Excavation and Removal

☐ Waste Removal (Closed-loop systems only)

☐ On-site Closure Method (only for temporary pits and closed-loop systems)

☐ In-place Burial    ☐ On-site Trench

☐ Alternative Closure Method (Exceptions must be submitted to the Santa Fe Environmental Bureau for consideration)

15

**Waste Excavation and Removal Closure Plan Checklist** (19 15 17 13 NMAC) *Instructions: Each of the following items must be attached to the closure plan.**Please indicate, by a check mark in the box, that the documents are attached.*

- ☐ Protocols and Procedures - based upon the appropriate requirements of 19.15 17 13 NMAC
- ☐ Confirmation Sampling Plan (if applicable) - based upon the appropriate requirements of Subsection F of 19.15 17 13 NMAC
- ☐ Disposal Facility Name and Permit Number (for liquids, drilling fluids and drill cuttings)
- ☐ Soil Backfill and Cover Design Specifications - based upon the appropriate requirements of Subsection H of 19 15 17 13 NMAC
- ☐ Re-vegetation Plan - based upon the appropriate requirements of Subsection I of 19 15 17 13 NMAC
- ☐ Site Reclamation Plan - based upon the appropriate requirements of Subsection G of 19 15 17 13 NMAC

**Waste Removal Closure For Closed-loop Systems That Utilize Above Ground Steel Tanks or Haul-off Bins Only:** (19 15 17 13 D NMAC)

*Instructions: Please identify the facility or facilities for the disposal of liquids, drilling fluids and drill cuttings. Use attachment if more than two facilities are required.*

Disposal Facility Name \_\_\_\_\_ Disposal Facility Permit # \_\_\_\_\_  
 Disposal Facility Name \_\_\_\_\_ Disposal Facility Permit # \_\_\_\_\_

Will any of the proposed closed-loop system operations and associated activities occur on or in areas that *will not* be used for future service and

☐ Yes (If yes, please provide the information) ☐ No

*Required for impacted areas which will not be used for future service and operations*

- ☐ Soil Backfill and Cover Design Specification - based upon the appropriate requirements of Subsection H of 19 15 17 13 NMAC  
☐ Re-vegetation Plan - based upon the appropriate requirements of Subsection I of 19 15 17 13 NMAC  
☐ Site Reclamation Plan - based upon the appropriate requirements of Subsection G of 19 15 17 13 NMAC

**Siting Criteria (Regarding on-site closure methods only:** 19 15 17 10 NMAC

*Instructions: Each siting criteria requires a demonstration of compliance in the closure plan. Recommendations of acceptable source material are provided below. Requests regarding changes to certain siting criteria may require administrative approval from the appropriate district office or may be considered an exception which must be submitted to the Santa Fe Environmental Bureau office for consideration of approval. Justifications and/or demonstrations of equivalency are required. Please refer to 19 15 17 10 NMAC for guidance.*

Ground water is less than 50 feet below the bottom of the buried waste

- NM Office of the State Engineer - iWATERS database search, USGS, Data obtained from nearby wells

☐ Yes ☐ No

☐ N/A

Ground water is between 50 and 100 feet below the bottom of the buried waste

- NM Office of the State Engineer - iWATERS database search, USGS, Data obtained from nearby wells

☐ Yes ☐ No

☐ N/A

Ground water is more than 100 feet below the bottom of the buried waste

- NM Office of the State Engineer - iWATERS database search, USGS, Data obtained from nearby wells

☐ Yes ☐ No

☐ N/A

Within 300 feet of a continuously flowing watercourse, or 200 feet of any other significant watercourse or lakebed, sinkhole, or playa lake (measured from the ordinary high-water mark)

- Topographic map, Visual inspection (certification) of the proposed site

☐ Yes ☐ No

Within 300 feet from a permanent residence, school, hospital, institution, or church in existence at the time of initial application

- Visual inspection (certification) of the proposed site, Aerial photo, satellite image

☐ Yes ☐ No

☐ Yes ☐ No

Within 500 horizontal feet of a private, domestic fresh water well or spring that less than five households use for domestic or stock watering purposes, or within 1000 horizontal feet of any other fresh water well or spring, in existence at the time of the initial application

- NM Office of the State Engineer - iWATERS database, Visual inspection (certification) of the proposed site

☐ Yes ☐ No

Within incorporated municipal boundaries or within a defined municipal fresh water well field covered under a municipal ordinance adopted pursuant to NMSA 1978, Section 3-27-3, as amended

- Written confirmation or verification from the municipality, Written approval obtained from the municipality

☐ Yes ☐ No

Within 500 feet of a wetland

- US Fish and Wildlife Wetland Identification map, Topographic map, Visual inspection (certification) of the proposed site

☐ Yes ☐ No

Within the area overlying a subsurface mine

- Written confirmation or verification or map from the NM EMNRD-Mining and Mineral Division

☐ Yes ☐ No

Within an unstable area

- Engineering measures incorporated into the design, NM Bureau of Geology & Mineral Resources, USGS, NM Geological Society, Topographic map

☐ Yes ☐ No

Within a 100-year floodplain

- FEMA map

☐ Yes ☐ No

**On-Site Closure Plan Checklist:** (19 15 17 13 NMAC) *Instructions: Each of the following items must be attached to the closure plan. Please indicate, by a check mark in the box, that the documents are attached.*

- ☐ Siting Criteria Compliance Demonstrations - based upon the appropriate requirements of 19 15 17 10 NMAC  
☐ Proof of Surface Owner Notice - based upon the appropriate requirements of Subsection F of 19 15 17 13 NMAC  
☐ Construction/Design Plan of Burial Trench (if applicable) based upon the appropriate requirements of 19 15 17 11 NMAC  
☐ Construction/Design Plan of Temporary Pit (for in place burial of a drying pad) - based upon the appropriate requirements of 19.15 17 11 NMAC  
☐ Protocols and Procedures - based upon the appropriate requirements of 19 15 17 13 NMAC  
☐ Confirmation Sampling Plan (if applicable) - based upon the appropriate requirements of Subsection F of 19 15 17 13 NMAC  
☐ Waste Material Sampling Plan - based upon the appropriate requirements of Subsection F of 19 15 17 13 NMAC  
☐ Disposal Facility Name and Permit Number (for liquids, drilling fluids and drill cuttings or in case on-site closure standards cannot be achieved)  
☐ Soil Cover Design - based upon the appropriate requirements of Subsection H of 19 15 17 13 NMAC  
☐ Re-vegetation Plan - based upon the appropriate requirements of Subsection I of 19 15 17 13 NMAC  
☐ Site Reclamation Plan - based upon the appropriate requirements of Subsection G of 19 15 17 13 NMAC

19

**Operator Application Certification:**

I hereby certify that the information submitted with this application is true, accurate and complete to the best of my knowledge and belief

Name (Print) \_\_\_\_\_ Title \_\_\_\_\_  
 Signature \_\_\_\_\_ Date \_\_\_\_\_  
 e-mail address \_\_\_\_\_ Telephone \_\_\_\_\_

20

**OCD Approval:** ☐ Permit Application (including closure plan) ☒ Closure Plan (only) ☐ OCD Conditions (see attachment)**OCD Representative Signature:** \_\_\_\_\_**Approval Date:** 6/22/2012**Title:** Compliance Officer**OCD Permit Number:** \_\_\_\_\_

21

**Closure Report (required within 60 days of closure completion):** Subsection K of 19 15 17 13 NMAC

*Instructions: Operators are required to obtain an approved closure plan prior to implementing any closure activities and submitting the closure report. The closure report is required to be submitted to the division within 60 days of the completion of the closure activities. Please do not complete this section of the form until an approved closure plan has been obtained and the closure activities have been completed.*

☒ **Closure Completion Date:** July 1, 2011

22

**Closure Method:**

☐ Waste Excavation and Removal ☒ On-site Closure Method ☐ Alternative Closure Method ☐ Waste Removal (Closed-loop systems only)  
☐ If different from approved plan, please explain \_\_\_\_\_

23

**Closure Report Regarding Waste Removal Closure For Closed-loop Systems That Utilize Above Ground Steel Tanks or Haul-off Bins Only:**

*Instructions: Please identify the facility or facilities for where the liquids, drilling fluids and drill cuttings were disposed. Use attachment if more than two facilities were utilized.*

Disposal Facility Name \_\_\_\_\_ Disposal Facility Permit Number \_\_\_\_\_

Disposal Facility Name \_\_\_\_\_ Disposal Facility Permit Number \_\_\_\_\_

Were the closed-loop system operations and associated activities performed on or in areas that will not be used for future service and operations?

☐ Yes (If yes, please demonstrate compliance to the items below) ☐ No*Required for impacted areas which will not be used for future service and operations*

☐ Site Reclamation (Photo Documentation)  
☐ Soil Backfilling and Cover Installation  
☐ Re-vegetation Application Rates and Seeding Technique

24

**Closure Report Attachment Checklist:** *Instructions: Each of the following items must be attached to the closure report. Please indicate, by a check mark in the box, that the documents are attached.*

☒ Proof of Closure Notice (surface owner and division)  
☒ Proof of Deed Notice (required for on-site closure)  
☒ Plot Plan (for on-site closures and temporary pits)  
☒ Confirmation Sampling Analytical Results (if applicable)  
☐ Waste Material Sampling Analytical Results (if applicable)  
☒ Disposal Facility Name and Permit Number  
☒ Soil Backfilling and Cover Installation  
☒ Re-vegetation Application Rates and Seeding Technique  
☒ Site Reclamation (Photo Documentation)

On-site Closure Location Latitude 36.85 °N Longitude 107.86412 °W NAD ☐ 1927 ☒ 1983

25

**Operator Closure Certification:**

I hereby certify that the information and attachments submitted with this closure report is true, accurate and complete to the best of my knowledge and belief. I also certify that the closure complies with all applicable closure requirements and conditions specified in the approved closure plan.

Name (Print) Jamie Goodwin Title Regulatory Tech  
 Signature \_\_\_\_\_ Date 8/10/11  
 e-mail address jamie.l.goodwin@conocophillips.com Telephone 505-326-9784

**Burlington Resources Oil Gas Company, LP**  
**San Juan Basin**  
**Closure Report**

**Lease Name: ATLANTIC B COM 9M**

**API No.: 30-045-35040**

In accordance with Rule 19.15.17.13 NMAC the following information describes the closure of the temporary pit referenced above. All proper documentation regarding closure activities is being included with the C-144. The temporary pit for this location was constructed and location drilled before June 16, 2008 (effective date for Rule 19.15.17). While closure of the temporary pit did fall within the rule some dates for submittals are after the rig release date.

- Details on Capping and Covering, where applicable **(See report)**
- Plot Plan (Pit Diagram) **(Included as an attachment)**
- Inspection Reports **(Included as an attachment)**
- Sampling Results **(Included as an attachment)**
- C-105 **(Included as an attachment)**
- Copy of Deed Notice will be filed with County Clerk **(Not required on Federal, State, or Tribal land as stated by FAQ dated October 30, 2008)**

**General Plan:**

1. All free standing liquids will be removed at the start of the pit closure process from the pit and disposed of in a division-approved facility or recycle, reuse or reclaim the liquids in a manner that the appropriate division district office approves.

**All recovered liquids were disposed of at Basin Disposal (Permit #NM-01-005) and any sludge or soil required to be removed to facilitate closure was hauled to Envirotech Land Farm (Permit #NM-01-011) and JFJ Landfarm % IEI (Permit #NM-01-0010B).**

2. The preferred method of closure for all temporary pits will be on-site burial, assuming that all the criteria listed in sub-section (B) of 19.15.17.13 are met.

**The pit was closed using onsite burial.**

3. The surface owner shall be notified of BR's closing of the temporary pit as per the approved closure plan using certified mail, return receipt requested

**The closure process notification to the landowner was sent via certified mail. (See Attached)(Well located on Private Land, certified mail is not required for Federal Land per BLM/OCD MOU.)**

4. Within 6 months of the Rig Off status occurring BR will ensure that temporary pits are closed, re-contoured, and reseeded.

**Provision 4 of the closure plan requirements were not met due to rig move off date as noted on C-105 which was prior to pit rule change. Burlington will ensure compliance with this rule in the future.**

5. Notice of Closure will be given to the Aztec Division office between 72 hours and one week of closure via email, or verbally. The notification of closure will include the following:
  - i. Operator's name
  - ii. Location by Unit Letter, Section, Township, and Range. Well name and API number.

**Notification is attached.**

6. Liner of temporary pit shall be removed above "mud level" after stabilization. Removal of liner will consist of manually or mechanically cutting liner at mud level and removing all remaining liner. Care will be taken to remove "All" of the liner i.e., edges of liner entrenched or buried. All excessive liner will be disposed of at a licensed disposal facility.

**Liner of temporary pit was removed above "mud level" after stabilization. Removal of the liner consisted of manually cutting liner at mud level and removing all remaining liner. Care was taken to remove "ALL" of the liner i.e., edges of liner entrenched or buried. All excessive liner was disposed of at a licensed disposal facility, (San Juan County Landfill).**

7. Pit contents shall be mixed with non-waste containing, earthen material in order to achieve the solidification process. The solidification process will be accomplished using a combination of natural drying and mechanically mixing. Pit contents will be mixed with non-waste, earthen material to a consistency that is deemed a safe and stable. The mixing ratio shall not exceed 3 parts clean soil to 1 part pit contents.

**Burlington mixed the Pit contents with non-waste containing, earthen material in order to achieve the solidification process. The solidification process was accomplished by using a combination of natural drying and mechanically mixing. Pit contents were mixed with non-waste, earthen material to a consistency that is deemed as safe and stable. The mixing ratio consisted of approximately 3 parts clean soil to 1 part pit contents.**

8. A five point composite sample will be taken of the pit using sampling tools and all samples tested per Subsection B of 19.15.17.13(B)(1)(b). In the event that the criteria are not met, all contents will be handled per Subparagraph (a) of Paragraph (1) of Subsection B of 19.15.17.13 i.e., Dig and haul.

**A five point composite sample was taken of the pit using sampling tools and all samples tested per Subsection B of 19.15.17.1 3(B)( 1 )(b). (Sample results attached).**

Components	Tests Method	Limit (mg/Kg)	Results
Benzene	EPA SW-846 8021B or 8260B	0.2	1.2 ug/kg
BTEX	EPA SW-846 8021B or 8260B	50	32.5 ug/kG
TPH	EPA SW-846 418.1	2500	66.1mg/kg
GRO/DRO	EPA SW-846 8015M	500	ND mg/Kg
Chlorides	EPA 300.1	1000/500	95 mg/L

9. Upon completion of solidification and testing standards being passed, the pit area will be backfilled with compacted, non-waste containing, earthen material. A minimum of four feet of cover shall be achieved and the cover shall include one foot of suitable material to establish vegetation at the site, or the background thickness of topsoil, whichever is greater. If standard testing fails BR will dig and haul all contents pursuant to 19.15.17.13.i.a. After doing such, confirmation sampling will be conducted to ensure a release has not occurred.

**The pit material passed solidification and testing standards. The pit area was then backfilled with compacted, non-waste containing, earthen material. More than four feet of cover was achieved and the cover included one foot of suitable material to establish vegetation at the site.**

10. During the stabilization process if the liner is ripped by equipment the Aztec OCD office will be notified within 48 hours and the liner will be repaired if possible. If the liner can not be repaired then all contents will be excavated and removed.

**The integrity of the liner was not damaged in the pit closure process.**

11. Dig and Haul Material will be transported to the Envirotech Land Farm located 16 miles south of Bloomfield on Angel Peak Road, CR 7175. Permit # NM010011

**Dig and Haul was not required.**

12. Re-contouring of location will match fit, shape, line, form and texture of the surrounding. Re-shaping will include drainage control, prevent ponding, and prevent erosion. Natural drainages will be unimpeded and water bars and/or silt traps will be placed in areas where needed to prevent erosion on a large scale. Final re-contour shall have a uniform appearance with smooth surface, fitting the natural landscape.

**The pit area was re-contoured to match fit, shape, line, form and texture of the surrounding area. Re-shaping included drainage control, to prevent ponding and erosion. Natural drainages were unimpeded and water bars and/or silt traps were placed in areas where needed to prevent erosion on a large scale. Final re-contour has a uniform appearance with smooth surface, fitting the natural landscape.**

13. Notification will be sent to OCD when the reclaimed area is seeded.

**Provision 13 was accomplished through complying with 7/15/11 seeding requirements as allowed by the BLM/OCD MOU.**

14. BR shall seed the disturbed areas the first growing season after the operator closes the pit. Seeding will be accomplished via drilling on the contour whenever practical or by other division-approved methods. BLM or Forest Service stipulated seed mixes will be used on federal lands. Vegetative cover will equal 70% of the native perennial vegetative cover (un-impacted) consisting of at least three native plant species, including at least one grass, but not including noxious weeds, and maintain that cover through two successive growing seasons. Repeat seeding or planting will be continued until successful vegetative growth occurs.

**Provision 14 was accomplished through complying with 7/15/11 seeding requirements as allowed by the BLM/OCD MOU.**

15. The temporary pit will be located with a steel marker, no less than four inches in diameter, cemented in a hole three feet deep in the center of the onsite burial upon the abandonment of all the wells on the pad. The marker will be flush with the ground to allow access of the active well pad and for safety concerns. The marker will include a threaded collar to be used for future abandonment. The top of the marker will contain a welded steel 12" square plate that indicates the onsite burial of the temporary pit. The plate will be easily removable and a four foot tall riser will be threaded into the top of the collar marker and welded around the base with the operator's information at the time of all wells on the pad are abandoned. The operator's information will include the following: Operator Name, Lease Name, Well Name and number, Unit Number, Section, Township, Range and an indicator that the marker is an onsite burial location.

**Provision 15 was accomplished by installing a steel marker in the temporary pit, no less than four inches in diameter, cemented in a hole three feet deep in the center of the onsite burial. The marker is flush with the ground to allow access of the active well pad and for safety concerns. The top of the marker contains a welded steel 12" square plate that indicates the onsite burial of the temporary pit. The plate contains the following: Operator Name, Lease Name, Well Name and number, Unit Number, Section, Township, Range and an indicator that the marker is an onsite burial location.**

**The plate will be easily removable and a four foot tall riser will be threaded into the top of the collar marker and welded around the base with the following operator's information at the time of all wells on the pad are abandoned. The riser will be labeled: BR, Fee, ATLANTIC B COM 9M, UL-N, Sec. 34, T 31N, R 10W, API # 30-045-35040**



**ConocoPhillips Company**  
GRFS / PTRRC – San Juan Business Unit  
Juanita Farrell  
3401 East 30<sup>th</sup> Street  
Farmington, NM 87402  
Telephone: (505) 326-9597  
Facsimile: (505) 324-6136

December 3, 2009

**VIA CERTIFIED MAIL – RETURN RECEIPT REQUESTED**  
7179-1000-1642-0049-6799

A.K. Brown  
Attn: Jean Brown  
PO Box 738  
Ignacio, CO 81137-0738

Re: Atlantic B Com 9M  
SW Section 34, T31N, R10W  
San Juan County, New Mexico

Dear Mrs. Brown:

Pursuant to Paragraph 1 (b) of Subsection F of 19.15.17.13 NMAC, an operator shall provide the surface owner notification of the operator's proposal to close a temporary pit on-site in compliance with the on-site closure methods specified in the same Subsection of the NMAC. In compliance of this requirement, please consider this notification of ConocoPhillips' intent to close the temporary pit on the above referenced location.

If you have any questions, please contact David Greer at (505) 326-9893.  
Sincerely,

**Juanita Farrell**

Juanita Farrell  
Staff Associate, PTRRC

STATE OF NEW MEXICO §  
COUNTY OF SAN JUAN §

201002074 02/22/2010 04:50 PM  
1 of 3 B1506 P61 R \$13.00  
San Juan County, NM DEBBIE HOLMES



**RECORDATION NOTICE AND**  
**MEMORANDUM OF SURFACE USE AGREEMENT**

This Agreement effective as of the 15 day of August, 2009 ("the Effective Date"), by and between **JEAN BROWN, FOR THE ESTATE OF A.K. BROWN**, whose address is P.O. Box 738, Ignacio, CO 81137, hereinafter referred to as "Grantor", does hereby grant unto **BURLINGTON RESOURCES OIL & GAS COMPANY LP**, an affiliate of ConocoPhillips Company, whose address is ConocoPhillips Company, Attention: Manager, RPA, P. O. Box 7500, Bartlesville, Oklahoma 74004-7500, hereinafter referred to as "Grantee".

**WITNESSETH**

1. In consideration of Ten Dollars (\$10.00) and other good and valuable consideration, cash in hand paid by Grantee to Grantor, the receipt and sufficiency of which is hereby acknowledged, Grantor hereby grants unto Grantee the following:

- (a) The rights and privileges to enter upon and use the following lands of Grantor in accordance with the terms and conditions of that certain unrecorded Surface Use Agreement executed by the parties herein and of even date herewith covering:

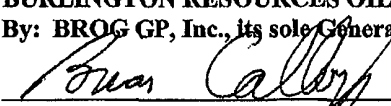
**Atlantic B Com 9M**  
**SESW Section 34, Township 31 North, Range 10 West, N.M.P.M.**  
**San Juan County, New Mexico**

- (b) In accordance with Section 19.15.17.13.F.1.f of the NMAC, operator hereby provides notice in the public record of an on-site burial of a temporary pit on the premises, as indicated on Exhibit "A" attached hereto and made a part hereof.

The Surface Use Agreement is hereby referred to and incorporated herein.

IN WITNESS WHEREOF, this Recordation Notice and Memorandum of Surface Use Agreement has been executed on the date indicated below by the undersigned but shall be effective as of the Effective Date.

**GRANTEE**  
**BURLINGTON RESOURCES OIL AND GAS COMPANY LP**  
By: **BROG GP, Inc., its sole General Partner**

  
Brian Calloway, Attorney-in-Fact

**GRANTOR**

  
Jean Brown for the A.K. Brown Estate

RW099472

STATE OF TEXAS §  
COUNTY OF ECTOR §

This instrument was acknowledged before me this 12th day of February, 2010, by Brian Calloway, Attorney-in-Fact of BURLINGTON RESOURCES OIL & GAS COMPANY LP, By: BROG GP, Inc., its sole General Partner, on behalf of said corporation.

My Commission Expires: 01-15-2012

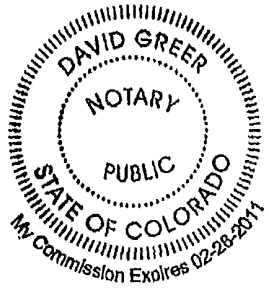
[Signature]  
Notary Public

STATE OF COLORADO §  
COUNTY OF LA PLATA §

This instrument was acknowledged before me this 13 day of AUGUST, 2009, by Jean Brown for the A.K. Brown Estate.

My Commission Expires: 2-26-2011

[Signature]  
Notary Public



DISTRICT I  
1625 N. French Dr., Hobbs, N.M. 88240

State of New Mexico  
Energy, Minerals & Natural Resources Department

Form C-102  
Revised October 12, 2005

DISTRICT I  
1301 W. Grand Avenue, Artesia, N.M. 88210

Submit to Appropriate District Office  
State Lease - 4 Copies  
Fee Lease - 3 Copies

DISTRICT III  
1000 Rio Brazos Rd., Aztec, N.M. 87410

OIL CONSERVATION DIVISION  
1220 South St. Francis Dr.  
Santa Fe, NM 87505

DISTRICT IV  
1220 S. St. Francis Dr., Santa Fe, NM 87505

☐ AMENDED REPORT

## WELL LOCATION AND ACREAGE DEDICATION PLAT

1 API Number		2 Pool Code		3 Pool Name BLANCO MESAVERDE / BASIN DAKOTA	
4 Property Code		5 Property Name ATLANTIC B COM			6 Well Number 9 M
7 OGRID No.		8 Operator Name BURLINGTON RESOURCES OIL & GAS COMPANY LP			9 Elevation 6225'

<sup>10</sup> Surface Location

UL or lot no.	Section	Township	Range	Lot Idn	Feet from the	North/South line	Feet from the	East/West line	County
N	34	31N	10W		862'	SOUTH	1476'	WEST	SAN JUAN

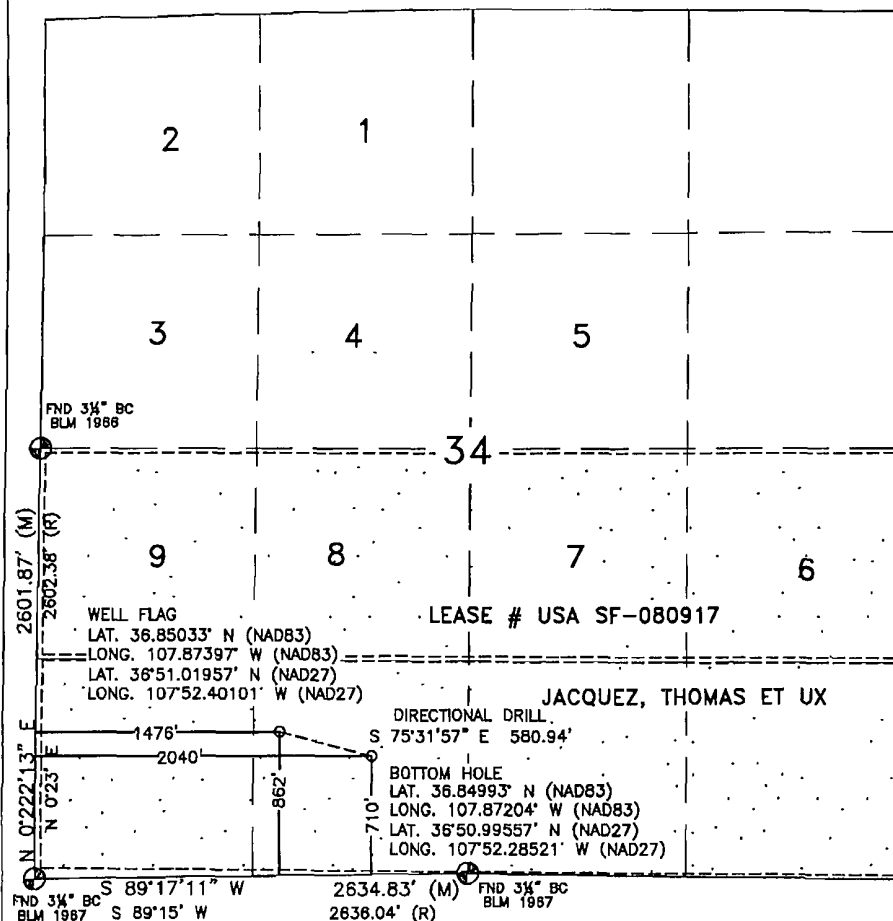
<sup>11</sup> Bottom Hole Location If Different From Surface

UL or lot no.	Section	Township	Range	Lot Idn	Feet from the	North/South line	Feet from the	East/West line	County
N	34	31N	10W		710'	SOUTH	2040'	WEST	SAN JUAN

<b>13 Dedicated Acres</b> MV-320.00 ACRES-S/2 DK-315.50 ACRES-S/2	<b>18 Joint or Infill</b>	<b>14 Consolidation Code</b>	<b>18 Order No.</b>
---	---------------------------	------------------------------	---------------------

NO ALLOWABLE WILL BE ASSIGNED TO THIS COMPLETION UNTIL ALL INTERESTS HAVE BEEN CONSOLIDATED  
OR A NON-STANDARD UNIT HAS BEEN APPROVED BY THE DIVISION

18



## 17 OPERATOR CERTIFICATION

I hereby certify that the information contained herein is true and complete to the best of my knowledge and belief, and that this organization either owns a working interest or unleased mineral interest in the land including the proposed bottom hole location or has a right to drill this well at this location pursuant to a contract with an owner or a compulsory pooling order heretofore entered by the division.

Signature

Date

Printed Name \_\_\_\_\_

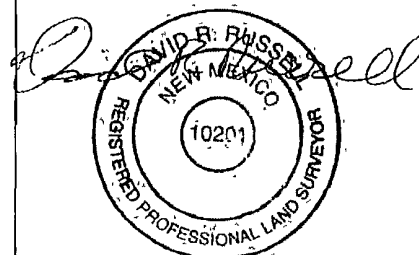
## 18 SURVEYOR CERTIFICATION

I hereby certify that the well location shown on this plat was plotted from field notes of actual surveys made by me or under my supervision, and that the same is true and correct to the best of my belief.

JUNE 26, 2009

Date of Survey

Signature and Seal of Professional Surveyor:



DAVID RUSSELL

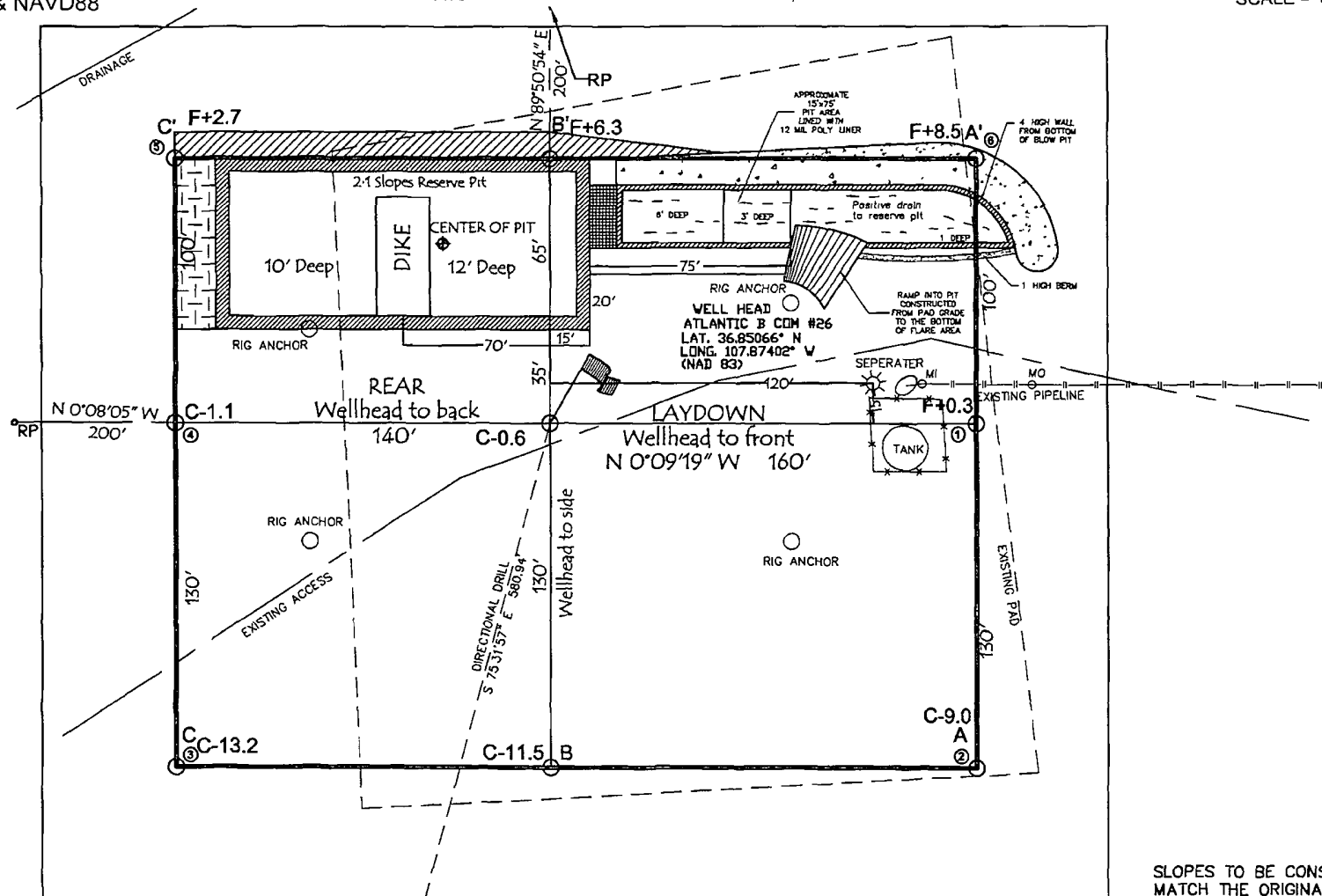
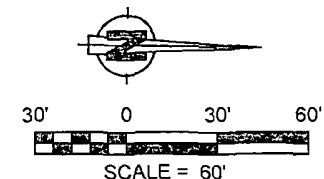
**Certificate Number**

10201

**WELL FLAG**  
 LATITUDE: 36 85033° N  
 LONGITUDE: 107 87397° W  
**CENTER OF PIT**  
 LATITUDE 36 85000° N  
 LONGITUDE. 107 86412° W  
 ELEVATION: 6212 5'  
 DATUM: NAD83 & NAVD88

# BURLINGTON RESOURCES OIL & GAS COMPANY LP

ATLANTIC B COM #9 M  
 862' FSL & 1476' FWL  
 LOCATED IN THE SE/4 SW/4 OF SECTION 34,  
 T31N, R10W, N.M.P.M.,  
 SAN JUAN COUNTY, NEW MEXICO  
 GROUND ELEVATION. 6225', NAVD 88  
 FINISHED PAD ELEVATION 6224 5', NAVD 88



**TOTAL PERMITTED AREA**  
 330' x 400' = 3.03 ACRES  
 SCALE: 1" = 60'  
 JOB No.: COPC318  
 DATE: 06/29/09  
 DRAWN BY: TWT

**NOTE:**  
 RESERVE PIT DIKE: TO BE 8' ABOVE DEEP SIDE (OVERFLOW - 3' WIDE AND 1' ABOVE SHALLOW SIDE).  
 RUSSELL SURVEYING, INC. IS NOT LIABLE FOR UNDERGROUND UTILITIES OR PIPELINES.  
 CONTRACTOR SHOULD CALL ONE-CALL FOR LOCATION OF ANY MARKED OR UNMARKED, BURIED PIPELINES OR  
 CABLES ON WELL PAD, IN CONSTRUCTION ZONE AND/OR ACCESS ROAD AT LEAST TWO (2) WORKING DAYS PRIOR  
 TO CONSTRUCTION.

SLOPES TO BE CONSTRUCTED TO  
 MATCH THE ORIGINAL CONTOURS  
 AS CLOSE AS POSSIBLE.



**Russell Surveying**  
 1409 W. Aztec Blvd. #2  
 Aztec, New Mexico 87410  
 (505) 334-8637

**EPA METHOD 8015 Modified  
Nonhalogenated Volatile Organics  
Total Petroleum Hydrocarbons**

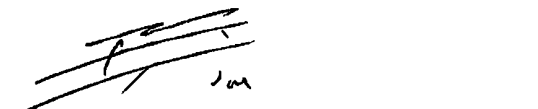
Client:	Burlington	Project #:	92115-1271
Sample ID:	Reserve Pit	Date Reported:	06-09-11
Laboratory Number:	58425	Sampled:	06-08-11
Chain of Custody No:	11760	Date Received:	06-08-11
Sample Matrix:	Soil	Date Extracted:	06-08-11
Preservative:	Cool	Date Analyzed:	06-09-11
Condition:	Intact	Analysis Requested:	8015 TPH

Parameter	Concentration (mg/Kg)	Det. Limit (mg/Kg)
Gasoline Range (C5 - C10)	ND	0.2
Diesel Range (C10 - C28)	ND	0.1
Total Petroleum Hydrocarbons	ND	

ND - Parameter not detected at the stated detection limit.

References: Method 8015B, Nonhalogenated Volatile Organics, Test Methods for Evaluating Solid Waste, SW-846, USEPA, December 1996.

Comments: **Atlantic B Com 9M**

  
Analyst  
Review

**EPA METHOD 8015 Modified  
Nonhalogenated Volatile Organics  
Total Petroleum Hydrocarbons**

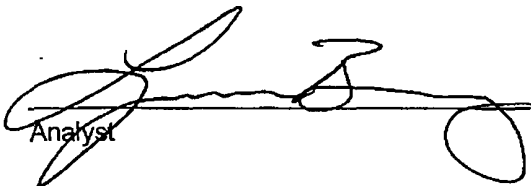
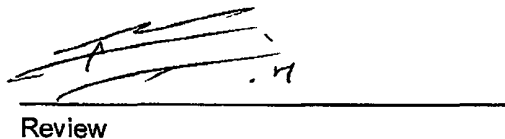
Client:	Burlington	Project #:	92115-1271
Sample ID:	Back Ground	Date Reported:	06-09-11
Laboratory Number:	58426	Sampled:	06-08-11
Chain of Custody No:	11760	Date Received:	06-08-11
Sample Matrix:	Soil	Date Extracted:	06-08-11
Preservative:	Cool	Date Analyzed:	06-09-11
Condition:	Intact	Analysis Requested:	8015 TPH

Parameter	Concentration (mg/Kg)	Det. Limit (mg/Kg)
Gasoline Range (C5 - C10)	ND	0.2
Diesel Range (C10 - C28)	ND	0.1
Total Petroleum Hydrocarbons	ND	

ND - Parameter not detected at the stated detection limit.

References: Method 8015B, Nonhalogenated Volatile Organics, Test Methods for Evaluating Solid Waste, SW-846, USEPA, December 1996.

Comments: **Atlantic B Com 9M**

  
Analyst  
Review

**EPA Method 8015 Modified  
 Nonhalogenated Volatile Organics  
 Total Petroleum Hydrocarbons**

**Quality Assurance Report**

Client:	QA/QC	Project #:	N/A
Sample ID:	06-09-11 QA/QC	Date Reported:	06-09-11
Laboratory Number:	58417	Date Sampled:	N/A
Sample Matrix:	Methylene Chloride	Date Received:	N/A
Preservative:	N/A	Date Analyzed:	06-09-11
Condition:	N/A	Analysis Requested:	TPH

	I-Cal Date	I-Cal RF	C-Cal RF	% Difference	Accept. Range
Gasoline Range C5 - C10	06/09/11	9.996E+02	1.000E+03	0.04%	0 - 15%
Diesel Range C10 - C28	06/09/11	9.996E+02	1.000E+03	0.04%	0 - 15%

Blank Conc. (mg/L - mg/Kg)	Concentration	Detection Limit
Gasoline Range C5 - C10	12.9	0.2
Diesel Range C10 - C28	2.9	0.1

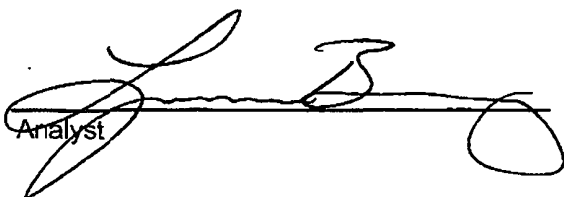
Duplicate Conc. (mg/Kg)	Sample	Duplicate	% Difference	Range
Gasoline Range C5 - C10	ND	ND	0.0%	0 - 30%
Diesel Range C10 - C28	25.8	24.9	3.5%	0 - 30%

Spike Conc. (mg/Kg)	Sample	Spike Added	Spike Result	% Recovery	Accept. Range
Gasoline Range C5 - C10	ND	250	244	97.7%	75 - 125%
Diesel Range C10 - C28	25.8	250	291	105%	75 - 125%

ND - Parameter not detected at the stated detection limit.

References: Method 8015B, Nonhalogenated Volatile Organics, Test Methods for Evaluating Solid Waste,  
 SW-846, USEPA, December 1996.

Comments: QA/QC for Samples 58417-58426, 58430-58431

  
 Analyst

  
 Review



Client:	Burlington	Project #:	92115-1271
Sample ID:	Reserve Pit	Date Reported:	06-09-11
Laboratory Number:	58425	Date Sampled:	06-08-11
Chain of Custody:	11760	Date Received:	06-08-11
Sample Matrix:	Soil	Date Analyzed:	06-09-11
Preservative:	Cool	Date Extracted:	06-08-11
Condition:	Intact	Analysis Requested:	BTEX
		Dilution:	10

Parameter	Concentration (ug/Kg)	Det. Limit (ug/Kg)
Benzene	1.2	0.9
Toluene	12.2	1.0
Ethylbenzene	ND	1.0
p,m-Xylene	15.8	1.2
o-Xylene	3.3	0.9
Total BTEX	32.5	

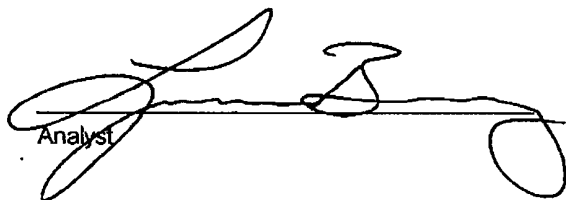
ND - Parameter not detected at the stated detection limit.

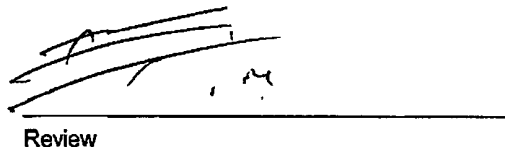
Surrogate Recoveries:	Parameter	Percent Recovery
	Fluorobenzene	87.6 %
	1,4-difluorobenzene	109 %
	Bromochlorobenzene	102 %

References: Method 5030B, Purge-and-Trap, Test Methods for Evaluating Solid Waste, SW-846, USEPA, December 1996.

Method 8021B, Aromatic Volatile Organics, Test Methods for Evaluating Solid Waste, SW-846, USEPA, December 1996.

Comments: Atlantic B Com 9M

  
Analyst

  
Review



Client:	Burlington	Project #:	92115-1271
Sample ID:	Back Ground	Date Reported:	06-09-11
Laboratory Number:	58426	Date Sampled:	06-08-11
Chain of Custody:	11760	Date Received:	06-08-11
Sample Matrix:	Soil	Date Analyzed:	06-09-11
Preservative:	Cool	Date Extracted:	06-08-11
Condition:	Intact	Analysis Requested:	BTEX
		Dilution:	10

Parameter	Concentration (ug/Kg)	Det. Limit (ug/Kg)
Benzene	ND	0.9
Toluene	ND	1.0
Ethylbenzene	ND	1.0
p,m-Xylene	ND	1.2
o-Xylene	ND	0.9
Total BTEX	ND	

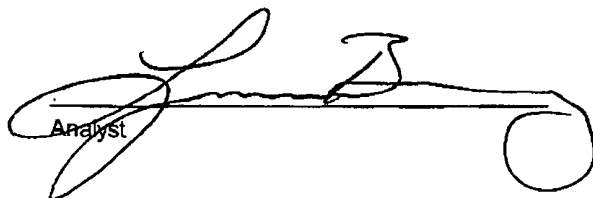
ND - Parameter not detected at the stated detection limit.

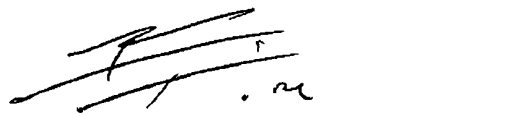
Surrogate Recoveries:	Parameter	Percent Recovery
	Fluorobenzene	89.9 %
	1,4-difluorobenzene	95.8 %
	Bromochlorobenzene	101 %

References: Method 5030B, Purge-and-Trap, Test Methods for Evaluating Solid Waste, SW-846, USEPA, December 1996.

Method 8021B, Aromatic Volatile Organics, Test Methods for Evaluating Solid Waste, SW-846, USEPA, December 1996.

Comments: Atlantic B Com 9M

  
Analyst

  
Review



# envirotech

Analytical Laboratory

## EPA METHOD 8021 AROMATIC VOLATILE ORGANICS

Client:	N/A	Project #:	N/A
Sample ID:	0609BBLK QA/QC	Date Reported:	06-09-11
Laboratory Number:	58417	Date Sampled:	N/A
Sample Matrix:	Soil	Date Received:	N/A
Preservative:	N/A	Date Analyzed:	06-09-11
Condition:	N/A	Analysis:	BTEX
		Dilution:	10

Calibration and Detection Limits (ug/L)	I-Cal RF	C-Cal RF	%Diff	Blank Conc	Detect Limit
		Accept Range 0 - 15%			
Benzene	2.2193E+006	2.2237E+006	0.2%	ND	0.1
Toluene	8.1078E+005	8.1241E+005	0.2%	ND	0.1
Ethylbenzene	5.6869E+005	5.6983E+005	0.2%	ND	0.1
p,m-Xylene	1.1778E+006	1.1802E+006	0.2%	ND	0.1
o-Xylene	4.3820E+005	4.3908E+005	0.2%	ND	0.1

Duplicate Conc. (ug/Kg)	Sample	Duplicate	%Diff	Accept Range	Detect Limit
Benzene	ND	ND	0.0%	0 - 30%	0.9
Toluene	1.1	1.1	0.0%	0 - 30%	1.0
Ethylbenzene	ND	ND	0.0%	0 - 30%	1.0
p,m-Xylene	2.9	3.5	20.7%	0 - 30%	1.2
o-Xylene	ND	ND	0.0%	0 - 30%	0.9

Spike Conc. (ug/Kg)	Sample	Amount Spiked	Spiked Sample	% Recovery	Accept Range
Benzene	ND	500	427	85.3%	39 - 150
Toluene	1.1	500	434	86.6%	46 - 148
Ethylbenzene	ND	500	404	80.7%	32 - 160
p,m-Xylene	2.9	1000	1,020	102%	46 - 148
o-Xylene	ND	500	496	99.2%	46 - 148

ND - Parameter not detected at the stated detection limit.

Dilution: Spike and spiked sample concentration represent a dilution proportional to sample dilution.

References: Method 5030B, Purge-and-Trap, Test Methods for Evaluating Solid Waste, SW-846, USEPA, December 1996.  
Method 8021B, Aromatic and Halogenated Volatiles by Gas Chromatography Using Photolization and/or Electrolytic Conductivity Detectors, SW-846, USEPA December 1996.

Comments: QA/QC for Samples 58417-58426

Analyst

Review



Client:	Burlington	Project #:	92115-1271
Sample ID:	<del>(Reserve Pit)</del>	Date Reported:	06/09/11
Laboratory Number:	58425	Date Sampled:	06/08/11
Chain of Custody No:	11760	Date Received:	06/08/11
Sample Matrix:	Soil	Date Extracted:	06/09/11
Preservative:	Cool	Date Analyzed:	06/09/11
Condition:	Intact	Analysis Needed:	TPH-418.1

Parameter	Concentration (mg/kg)	Det. Limit (mg/kg)
-----------	--------------------------	--------------------------

**Total Petroleum Hydrocarbons**

**66.1**

**8.4**

ND = Parameter not detected at the stated detection limit.

References: Method 418.1, Petroleum Hydrocarbons, Total Recoverable, Chemical Analysis of Water and Waste, USEPA Storet No. 4551, 1978.

Comments: **Atlantic B Com 9M**

Analyst

Review



Client:	Burlington	Project #:	92115-1271
Sample ID:	Back Ground	Date Reported:	06/09/11
Laboratory Number:	58426	Date Sampled:	06/08/11
Chain of Custody No:	11760	Date Received:	06/08/11
Sample Matrix:	Soil	Date Extracted:	06/09/11
Preservative:	Cool	Date Analyzed:	06/09/11
Condition:	Intact	Analysis Needed:	TPH-418.1

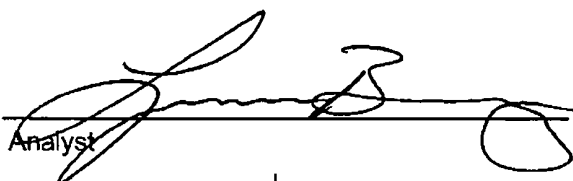
Parameter	Concentration (mg/kg)	Det. Limit (mg/kg)
-----------	--------------------------	--------------------------


<b>Total Petroleum Hydrocarbons</b>	<b>17.6</b>	<b>8.4</b>
-------------------------------------	-------------	------------

ND = Parameter not detected at the stated detection limit.

References: Method 418.1, Petroleum Hydrocarbons, Total Recoverable, Chemical Analysis of Water and Waste, USEPA Storet No. 4551, 1978.

Comments: **Atlantic B Com 9M**

  
Analyst

  
Review



**EPA METHOD 418.1  
TOTAL PETROLEUM HYDROCARBONS  
QUALITY ASSURANCE REPORT**

Client:	QA/QC	Project #:	N/A
Sample ID:	QA/QC	Date Reported:	06/09/11
Laboratory Number:	06-09-TPH.QA/QC 58417	Date Sampled:	N/A
Sample Matrix:	Freon-113	Date Analyzed:	06/09/11
Preservative:	N/A	Date Extracted:	06/09/11
Condition:	N/A	Analysis Needed:	TPH

Calibration	I-Cal Date	C-Cal Date	I-Cal RF:	C-Cal RF:	% Difference	Accept. Range
	06/08/11	06/09/11	1,760	1,640	6.8%	+/- 10%

Blank Conc. (mg/Kg)	Concentration	Detection Limit
TPH	ND	8.4

Duplicate Conc. (mg/Kg)	Sample	Duplicate	% Difference	Accept. Range
TPH	352	387	10.0%	+/- 30%

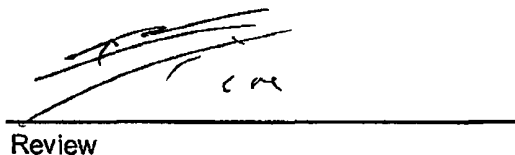
Spike Conc. (mg/Kg)	Sample	Spike Added	Spike Result	% Recovery	Accept Range
TPH	352	2,000	1,900	80.8%	80 - 120%

ND = Parameter not detected at the stated detection limit.

References: Method 418.1, Petroleum Hydrocarbons, Total Recoverable, Chemical Analysis of Water and Waste, USEPA Storet No. 4551, 1978.

Comments: QA/QC for Samples 58417-58426

Analyst 

Review 

Client:	Burlington	Project #:	92115-1271
Sample ID:	Reserve Pit	Date Reported:	06/09/11
Lab ID#:	58425	Date Sampled:	06/08/11
Sample Matrix:	Soil	Date Received:	06/08/11
Preservative:	Cool	Date Analyzed:	06/09/11
Condition:	Intact	Chain of Custody:	11760

**Parameter****Concentration (mg/Kg)****Total Chloride****95****Reference:**

U.S.E.P.A., 4500B, "Methods for Chemical Analysis of Water and Wastes", 1983.  
Standard Methods For The Examination of Water And Waste Water", 18th ed., 1992.

**Comments:****Atlantic B Com 9M**  
Analyst  
Review

Client:	Burlington	Project #:	92115-1271
Sample ID:	Back Ground	Date Reported:	06/09/11
Lab ID#:	58426	Date Sampled:	06/08/11
Sample Matrix:	Soil	Date Received:	06/08/11
Preservative:	Cool	Date Analyzed:	06/09/11
Condition:	Intact	Chain of Custody:	11760

Parameter	Concentration (mg/Kg)
Total Chloride	10

Reference: U.S.E.P.A., 4500B, "Methods for Chemical Analysis of Water and Wastes", 1983.  
Standard Methods For The Examination of Water And Waste Water", 18th ed., 1992.

Comments: **Atlantic B Com 9M**

\_\_\_\_\_  
Analyst

  
\_\_\_\_\_  
Review

Submit To Appropriate District Office Two Copies District I 1625 N French Dr . Hobbs, NM 88240 District II 1301 W Grand Avenue Artesia, NM 88210 District III 1000 Rio Brazos Rd , Aztec NM 87410 District IV 1220 S St Francis Dr , Santa Fe, NM 87505	<b>State of New Mexico</b> <b>Energy, Minerals and Natural Resources</b>  <b>Oil Conservation Division</b> <b>1220 South St. Francis Dr.</b> <b>Santa Fe, NM 87505</b>	<b>Form C-105</b> July 17, 2008								
		1. WELL API NO. <b>30-045-35040</b>								
		2 Type of Lease <input type="checkbox"/> STATE <input checked="" type="checkbox"/> FEE <input type="checkbox"/> FED/INDIAN								
		3 State Oil & Gas Lease No <b>SF - 080917</b>								
<b>WELL COMPLETION OR RECOMPLETION REPORT AND LOG</b>										
4 Reason for filing  <input type="checkbox"/> <b>COMPLETION REPORT</b> (Fill in boxes #1 through #31 for State and Fee wells only)  <input checked="" type="checkbox"/> <b>C-144 CLOSURE ATTACHMENT</b> (Fill in boxes #1 through #9, #15 Date Rig Released and #32 and/or #33, attach this and the plat to the C-144 closure report in accordance with 19 15 17 13 K NMAC)		5 Lease Name or Unit Agreement Name <b>ATLANTIC B COM</b>  6 Well Number <b>9M</b>								
7 Type of Completion <input checked="" type="checkbox"/> NEW WELL <input type="checkbox"/> WORKOVER <input type="checkbox"/> DEEPENING <input type="checkbox"/> PLUGBACK <input type="checkbox"/> DIFFERENT RESERVOIR <input type="checkbox"/> OTHER										
8 Name of Operator <b>Burlington Resources Oil Gas Company, LP</b>		9 OGRID <b>14538</b>								
10 Address of Operator PO Box 4298, Farmington, NM 87499		11 Pool name or Wildcat								
12 Location	Unit Ltr	Section	Township	Range	Lot	Feet from the	N/S Line	Feet from the	E/W Line	County
Surface:										
BH:										
13 Date Spudded	14 Date T D Reached	15 Date Rig Released 2/22/11		16 Date Completed (Ready to Produce)			17 Elevations (DF and RKB, RT, GR, etc )			
18 Total Measured Depth of Well		19 Plug Back Measured Depth		20 Was Directional Survey Made?			21 Type Electric and Other Logs Run			
22 Producing Interval(s), of this completion - Top, Bottom, Name										
<b>23 CASING RECORD (Report all strings set in well)</b>										
CASING SIZE		WEIGHT LB /FT		DEPTH SET		HOLE SIZE		CEMENTING RECORD		AMOUNT PULLED
24. LINER RECORD						25 TUBING RECORD				
SIZE	TOP	BOTTOM	SACKS CEMENT	SCREEN		SIZE	DEPTH SET	PACKER SET		
26 Perforation record (interval, size, and number)						27 ACID, SHOT, FRACTURE, CEMENT, SQUEEZE, ETC				
						DEPTH INTERVAL		AMOUNT AND KIND MATERIAL USED		
<b>28 PRODUCTION</b>										
Date First Production		Production Method ( <i>Flowing, gas lift, pumping - Size and type pump</i> )					Well Status ( <i>Prod or Shut-in</i> )			
Date of Test	Hours Tested	Choke Size	Prod'n For Test Period	Oil - Bbl	Gas - MCF	Water - Bbl	Gas - Oil Ratio			
Flow Tubing Press	Casing Pressure	Calculated 24-Hour Rate	Oil - Bbl	Gas - MCF	Water - Bbl	Oil Gravity - API - ( <i>Corr</i> )				
29 Disposition of Gas ( <i>Sold, used for fuel, vented, etc</i> )							30 Test Witnessed By			
31 List Attachments										
32 If a temporary pit was used at the well, attach a plat with the location of the temporary pit										
33. If an on-site burial was used at the well, report the exact location of the on-site burial										
Latitude <b>36.85000°N</b> Longitude <b>107.86412°W</b> NAD <input type="checkbox"/> 1927 <input checked="" type="checkbox"/> 1983										
I hereby certify that the information shown on both sides of this form is true and complete to the best of my knowledge and belief										
Signature <i>Jamie Goodwin</i>		Printed Name <b>Jamie Goodwin</b>		Title: <b>Regulatory Tech.</b>		Date: <b>8/9/2011</b>				
E-mail Address <b>jamie.l.goodwin@conocophillips.com</b>										



**Pit Closure Form:**

Date: 7/1/11

Well Name: ATLANTIC B COM 9M

Footages: 862' FSL, 1476' FWL Unit Letter: N

Section: 34, T-31-N, R-10-W, County: SAN JUAN State: NM

Contractor Closing Pit: AZTEC EXCAVATION

Construction Inspector: JARED CHAVEZ Date: 7/1/11

Inspector Signature: [Signature]

Revised 11/4/10

Office Use Only:

Subtask ☒

DSM ☐

Folder ☐

## Goodwin, Jamie L

---

**From:** Payne, Wendy F  
**Sent:** Monday, June 27, 2011 10:39 AM  
**To:** (Brandon.Powell@state.nm.us); GRP:SJBU Regulatory; Eli (Cimarron) (eliv@qwestoffice.net); James (Cimarron) (jwood@cimarronsvc.com); Bassing, Kendal R.; Berenz (mxberenz@yahoo.com); Chavez Darrell (dchavez0330@yahoo.com); Elmer Perry; Faver Norman; Fred Martinez; Jared Chavez; Lowe, Terry; McDonald Johnny (jr\_mcdonald@msn.com); Payne, Wendy F; Smith, Mike W; Spearman, Bobby E; Steve McGlasson, Tally, Ethel; Becker, Joey W; Bowker, Terry D; Frost, Ryan M; Goosey, Paul P; Gordon Chenault, Green, Cary J; GRP:SJBU Production Leads; Hockett, Christy R; Johnson, Kirk L, Bassing, Kendal R.; Kennedy, Jim R; Lopez, Richard A; Nelson, Garry D; O'Nan, Mike J; Peace, James T; Pierce, Richard M; Poulson, Mark E; Schaaphok, Bill; Smith, Randall O; Souther, Tappan G; Spearman, Bobby E; Stamets, Steve A; Thacker, LARRY; Thibodeaux, Gordon A, Work, Jim A; Corey Alfandre; 'isaiah@crossfire-llc.com'; Jerid Cabot (jerid@crossfire-llc.com); Blair, Maxwell O; Blakley, Mac; Farrell, Juanita R; Gillette, Steven L (PAC); Hines, Derek J; Maxwell, Mary Alice; McWilliams, Peggy L; Saiz, Kooper (Finney Land Co.); Seabolt, Elmo F; Thayer, Ashley A; Thompson, Trey E (Finney Land Co.)  
**Cc:** 'Aztec Excavation'  
**Subject:** Reclamation Notice: Atlantic B Com 9M  
**Importance:** High  
**Attachments:** ATLANTIC B COM 9M.pdf; Pkg Atlantic B Com 9M APD and SUA.pdf

Aztec Excavation will move a tractor to the **Atlantic B Com 9M** to start the reclamation process on Thursday, June 30, 2011. Please contact Jared Chavez (793-7912) if you have any questions or need further assistance.



ATLANTIC B COM 9M.pdf (16 KB)    Pkg Atlantic B Com 9M APD and ...

Burlington Resources Well - Network # 10292418 - Activity Code D250 (reclamation) & D260 (pit closure) - (PO:Kaitlw)  
San Juan County, NM

### Atlantic B Com 9M - FEE surface/FEE minerals

Onsite: n/a  
Twin: Atlantic B 26 (existing)  
862' FSL, 1476' FWL  
Sec.34, T31N, R10W  
Unit Letter " N "  
Lease # FEE  
BH: SESW,Sec.34,T31N,R10W  
Latitude: 36° 51' 01" N (NAD 83)  
Longitude: 107° 52' 26" W (NAD 83)  
Elevation: 6225'  
Total Acres Disturbed: 3.03 acres  
Access Road: none  
API # 30-045-35040  
Within City Limits: NO  
Pit Lined: **YES**

**Wendy Payne**  
**ConocoPhillips-SJBU**  
**505-326-9533**  
*Wendy.F.Payne@conocophillips.com*

# ConocoPhillips

## Reclamation Form:

Date: 8/1/11

Well Name: ATLANTIC B COM 9M

Footages: 862' PSL, 1476' FWL Unit Letter: N

Section: 34, T-31 -N, R-10 -W, County: SAN JUAN State: NM

Reclamation Contractor: ARTEC EXCAVATION

Reclamation Date: 7/11/11

Road Completion Date: 7/20/11

Seeding Date: 7/15/11

**\*\*PIT MARKER STATUS (When Required):** Picture of Marker set needed

MARKER PLACED : 7/12/11 (DATE)

LATITUDE: N 36.85045

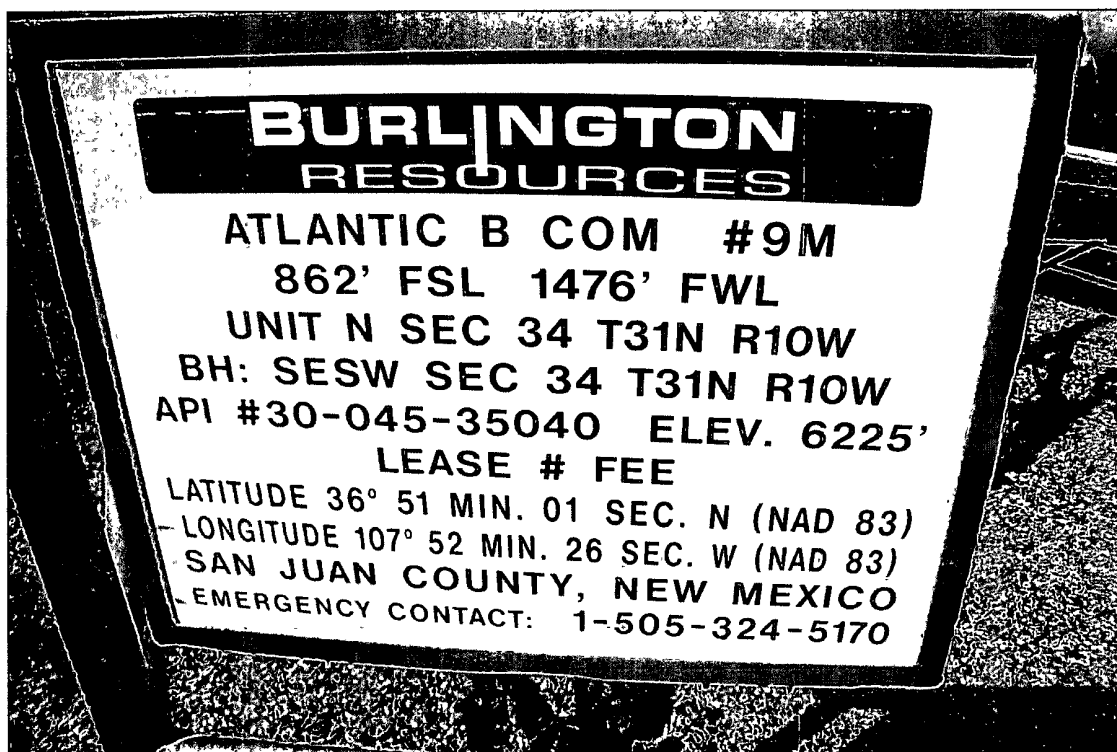
LONGITUDE: W 107.87388

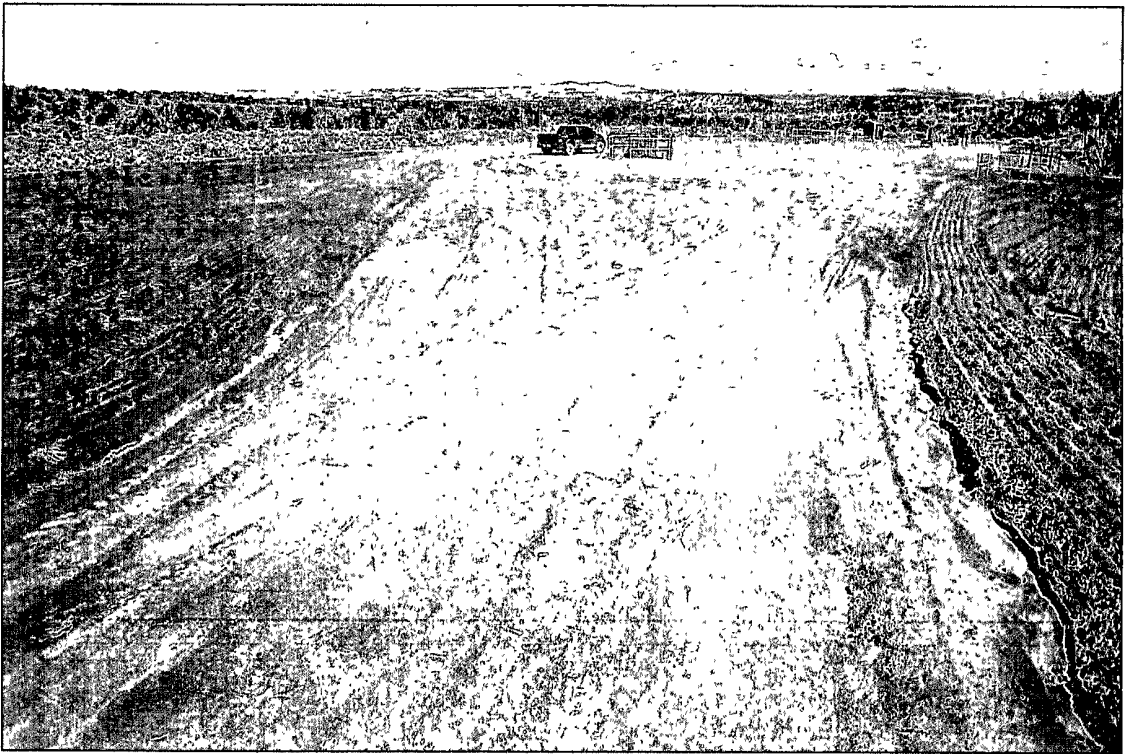
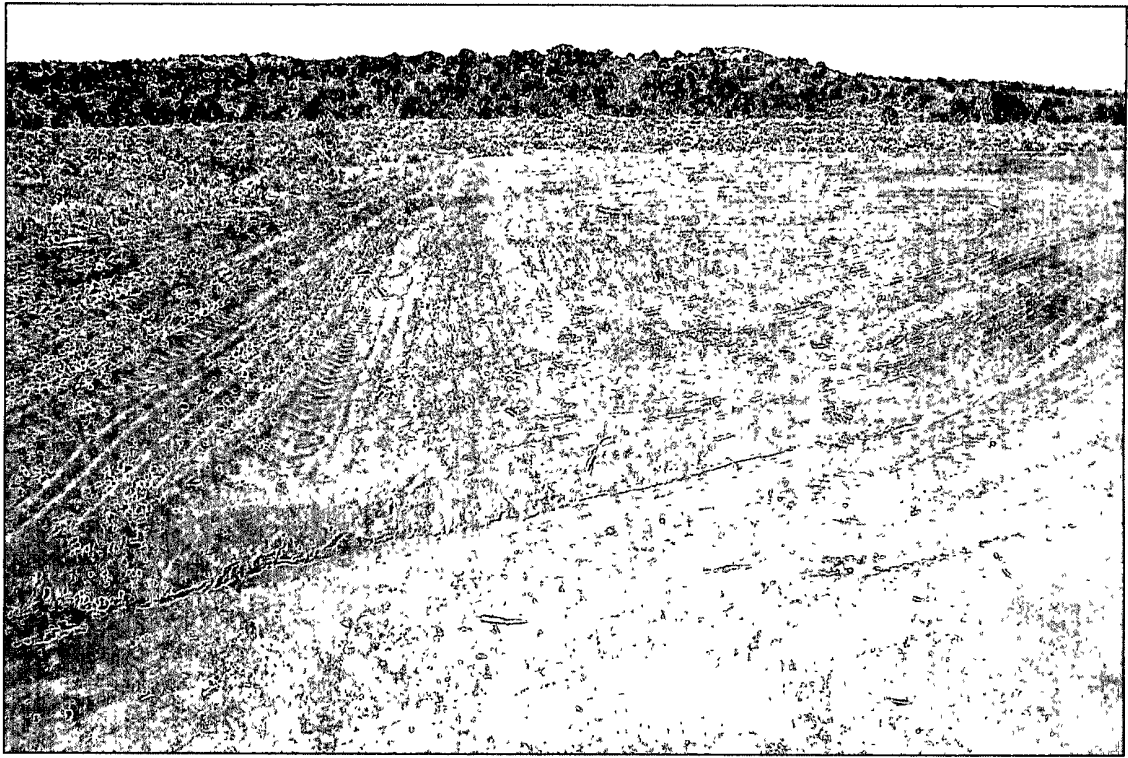
Pit Manifold removed 6/29/11 (DATE)

Construction Inspector: JARED CHAVEZ Date: 8/1/11

Inspector Signature: [Signature]

Office Use Only:  
Subtask \_\_\_\_\_  
DSM \_\_\_\_\_  
Folder \_\_\_\_\_  
Pictures \_\_\_\_\_  
Revised 11/4/10





WELL NAME: Atlantic B Com 9M		OPEN PIT INSPECTION FORM								ConocoPhillips	
INSPECTOR		Fred Mtz	Fred Mtz	Fred Mtz	Fred Mtz	Fred Mtz	Fred Mtz	Fred Mtz	Fred Mtz	Fred Mtz	
DATE		02/28/11	03/07/11	03/21/11	03/28/11	04/04/11	04/18/11	05/02/11	05/09/11	05/16/11	
*Please request for pit extension after 26 weeks		Week 1	Week 2	Week 3	Week 4	Week 5	Week 6	Week 7	Week 8	Week 9	
PIT STATUS		<input checked="" type="checkbox"/> Drilled <input type="checkbox"/> Completed <input type="checkbox"/> Clean-Up	<input checked="" type="checkbox"/> Drilled <input type="checkbox"/> Completed <input type="checkbox"/> Clean-Up	<input checked="" type="checkbox"/> Drilled <input type="checkbox"/> Completed <input type="checkbox"/> Clean-Up	<input checked="" type="checkbox"/> Drilled <input type="checkbox"/> Completed <input type="checkbox"/> Clean-Up	<input checked="" type="checkbox"/> Drilled <input type="checkbox"/> Completed <input type="checkbox"/> Clean-Up	<input type="checkbox"/> Drilled <input type="checkbox"/> Completed <input type="checkbox"/> Clean-Up	<input checked="" type="checkbox"/> Drilled <input type="checkbox"/> Completed <input type="checkbox"/> Clean-Up	<input type="checkbox"/> Drilled <input type="checkbox"/> Completed <input type="checkbox"/> Clean-Up	<input checked="" type="checkbox"/> Drilled <input type="checkbox"/> Completed <input type="checkbox"/> Clean-Up	
LOCATION	Is the location marked with the proper flagging? (Const. Zone, poles, pipelines, etc.)	<input checked="" type="checkbox"/> Yes <input type="checkbox"/> No	<input checked="" type="checkbox"/> Yes <input type="checkbox"/> No	<input checked="" type="checkbox"/> Yes <input type="checkbox"/> No	<input checked="" type="checkbox"/> Yes <input type="checkbox"/> No	<input checked="" type="checkbox"/> Yes <input type="checkbox"/> No	<input checked="" type="checkbox"/> Yes <input type="checkbox"/> No	<input checked="" type="checkbox"/> Yes <input type="checkbox"/> No	<input type="checkbox"/> Yes <input type="checkbox"/> No	<input checked="" type="checkbox"/> Yes <input type="checkbox"/> No	
	Is the temporary well sign on location and visible from access road?	<input checked="" type="checkbox"/> Yes <input type="checkbox"/> No	<input checked="" type="checkbox"/> Yes <input type="checkbox"/> No	<input checked="" type="checkbox"/> Yes <input type="checkbox"/> No	<input checked="" type="checkbox"/> Yes <input type="checkbox"/> No	<input checked="" type="checkbox"/> Yes <input type="checkbox"/> No	<input checked="" type="checkbox"/> Yes <input type="checkbox"/> No	<input checked="" type="checkbox"/> Yes <input type="checkbox"/> No	<input type="checkbox"/> Yes <input type="checkbox"/> No	<input checked="" type="checkbox"/> Yes <input type="checkbox"/> No	
ENVIRONMENTAL COMPLIANCE	Is the access road in good driving condition? (deep ruts, bladed)	<input checked="" type="checkbox"/> Yes <input type="checkbox"/> No	<input checked="" type="checkbox"/> Yes <input type="checkbox"/> No	<input checked="" type="checkbox"/> Yes <input type="checkbox"/> No	<input checked="" type="checkbox"/> Yes <input type="checkbox"/> No	<input checked="" type="checkbox"/> Yes <input type="checkbox"/> No	<input checked="" type="checkbox"/> Yes <input type="checkbox"/> No	<input checked="" type="checkbox"/> Yes <input type="checkbox"/> No	<input type="checkbox"/> Yes <input type="checkbox"/> No	<input checked="" type="checkbox"/> Yes <input type="checkbox"/> No	
	Are the culverts free from debris or any object preventing flow?	<input checked="" type="checkbox"/> Yes <input type="checkbox"/> No	<input type="checkbox"/> Yes <input checked="" type="checkbox"/> No	<input checked="" type="checkbox"/> Yes <input type="checkbox"/> No	<input checked="" type="checkbox"/> Yes <input type="checkbox"/> No	<input checked="" type="checkbox"/> Yes <input type="checkbox"/> No	<input type="checkbox"/> Yes <input checked="" type="checkbox"/> No	<input checked="" type="checkbox"/> Yes <input type="checkbox"/> No	<input type="checkbox"/> Yes <input type="checkbox"/> No	<input checked="" type="checkbox"/> Yes <input type="checkbox"/> No	
	Is the top of the location bladed and in good operating condition?	<input checked="" type="checkbox"/> Yes <input type="checkbox"/> No	<input checked="" type="checkbox"/> Yes <input type="checkbox"/> No	<input checked="" type="checkbox"/> Yes <input type="checkbox"/> No	<input checked="" type="checkbox"/> Yes <input type="checkbox"/> No	<input checked="" type="checkbox"/> Yes <input type="checkbox"/> No	<input checked="" type="checkbox"/> Yes <input type="checkbox"/> No	<input checked="" type="checkbox"/> Yes <input type="checkbox"/> No	<input type="checkbox"/> Yes <input type="checkbox"/> No	<input checked="" type="checkbox"/> Yes <input type="checkbox"/> No	
	Is the fence stock-proof? (fences tight, barbed wire, fence clips in place?)	<input checked="" type="checkbox"/> Yes <input type="checkbox"/> No	<input checked="" type="checkbox"/> Yes <input type="checkbox"/> No	<input checked="" type="checkbox"/> Yes <input type="checkbox"/> No	<input checked="" type="checkbox"/> Yes <input type="checkbox"/> No	<input type="checkbox"/> Yes <input checked="" type="checkbox"/> No	<input type="checkbox"/> Yes <input checked="" type="checkbox"/> No	<input checked="" type="checkbox"/> Yes <input type="checkbox"/> No	<input type="checkbox"/> Yes <input type="checkbox"/> No	<input checked="" type="checkbox"/> Yes <input type="checkbox"/> No	
	Is the pit liner in good operating condition? (no tears, up-rooting corners, etc.)	<input checked="" type="checkbox"/> Yes <input type="checkbox"/> No	<input checked="" type="checkbox"/> Yes <input type="checkbox"/> No	<input checked="" type="checkbox"/> Yes <input type="checkbox"/> No	<input checked="" type="checkbox"/> Yes <input type="checkbox"/> No	<input checked="" type="checkbox"/> Yes <input type="checkbox"/> No	<input checked="" type="checkbox"/> Yes <input type="checkbox"/> No	<input checked="" type="checkbox"/> Yes <input type="checkbox"/> No	<input type="checkbox"/> Yes <input type="checkbox"/> No	<input checked="" type="checkbox"/> Yes <input type="checkbox"/> No	
	Is the the location free from trash, oil stains and other materials? (cables, pipe threads, etc.)	<input checked="" type="checkbox"/> Yes <input type="checkbox"/> No	<input checked="" type="checkbox"/> Yes <input type="checkbox"/> No	<input checked="" type="checkbox"/> Yes <input type="checkbox"/> No	<input checked="" type="checkbox"/> Yes <input type="checkbox"/> No	<input checked="" type="checkbox"/> Yes <input type="checkbox"/> No	<input checked="" type="checkbox"/> Yes <input type="checkbox"/> No	<input checked="" type="checkbox"/> Yes <input type="checkbox"/> No	<input type="checkbox"/> Yes <input type="checkbox"/> No	<input checked="" type="checkbox"/> Yes <input type="checkbox"/> No	
	Does the pit contain two feet of free board? (check the water levels)	<input checked="" type="checkbox"/> Yes <input type="checkbox"/> No	<input checked="" type="checkbox"/> Yes <input type="checkbox"/> No	<input checked="" type="checkbox"/> Yes <input type="checkbox"/> No	<input checked="" type="checkbox"/> Yes <input type="checkbox"/> No	<input checked="" type="checkbox"/> Yes <input type="checkbox"/> No	<input checked="" type="checkbox"/> Yes <input type="checkbox"/> No	<input checked="" type="checkbox"/> Yes <input type="checkbox"/> No	<input type="checkbox"/> Yes <input type="checkbox"/> No	<input checked="" type="checkbox"/> Yes <input type="checkbox"/> No	
	Is there any standing water on the blow pit?	<input checked="" type="checkbox"/> Yes <input type="checkbox"/> No	<input checked="" type="checkbox"/> Yes <input type="checkbox"/> No	<input checked="" type="checkbox"/> Yes <input type="checkbox"/> No	<input checked="" type="checkbox"/> Yes <input type="checkbox"/> No	<input checked="" type="checkbox"/> Yes <input type="checkbox"/> No	<input checked="" type="checkbox"/> Yes <input type="checkbox"/> No	<input checked="" type="checkbox"/> Yes <input type="checkbox"/> No	<input type="checkbox"/> Yes <input type="checkbox"/> No	<input checked="" type="checkbox"/> Yes <input type="checkbox"/> No	
	Are the pits free of trash and oil?	<input checked="" type="checkbox"/> Yes <input type="checkbox"/> No	<input checked="" type="checkbox"/> Yes <input type="checkbox"/> No	<input checked="" type="checkbox"/> Yes <input type="checkbox"/> No	<input checked="" type="checkbox"/> Yes <input type="checkbox"/> No	<input checked="" type="checkbox"/> Yes <input type="checkbox"/> No	<input checked="" type="checkbox"/> Yes <input type="checkbox"/> No	<input checked="" type="checkbox"/> Yes <input type="checkbox"/> No	<input type="checkbox"/> Yes <input type="checkbox"/> No	<input checked="" type="checkbox"/> Yes <input type="checkbox"/> No	
	Are there diversion ditches around the pits for natural drainage?	<input type="checkbox"/> Yes <input checked="" type="checkbox"/> No	<input checked="" type="checkbox"/> Yes <input type="checkbox"/> No	<input checked="" type="checkbox"/> Yes <input type="checkbox"/> No	<input checked="" type="checkbox"/> Yes <input type="checkbox"/> No	<input checked="" type="checkbox"/> Yes <input type="checkbox"/> No	<input checked="" type="checkbox"/> Yes <input type="checkbox"/> No	<input checked="" type="checkbox"/> Yes <input type="checkbox"/> No	<input type="checkbox"/> Yes <input type="checkbox"/> No	<input checked="" type="checkbox"/> Yes <input type="checkbox"/> No	
	Is there a Manifold on location?	<input checked="" type="checkbox"/> Yes <input type="checkbox"/> No	<input type="checkbox"/> Yes <input checked="" type="checkbox"/> No	<input type="checkbox"/> Yes <input checked="" type="checkbox"/> No	<input checked="" type="checkbox"/> Yes <input type="checkbox"/> No	<input checked="" type="checkbox"/> Yes <input type="checkbox"/> No	<input checked="" type="checkbox"/> Yes <input type="checkbox"/> No	<input checked="" type="checkbox"/> Yes <input type="checkbox"/> No	<input type="checkbox"/> Yes <input type="checkbox"/> No	<input checked="" type="checkbox"/> Yes <input type="checkbox"/> No	
Is the Manifold free of leaks? Are the hoses in good condition?	<input checked="" type="checkbox"/> Yes <input type="checkbox"/> No	<input checked="" type="checkbox"/> Yes <input type="checkbox"/> No	<input checked="" type="checkbox"/> Yes <input type="checkbox"/> No	<input checked="" type="checkbox"/> Yes <input type="checkbox"/> No	<input checked="" type="checkbox"/> Yes <input type="checkbox"/> No	<input checked="" type="checkbox"/> Yes <input type="checkbox"/> No	<input checked="" type="checkbox"/> Yes <input type="checkbox"/> No	<input type="checkbox"/> Yes <input type="checkbox"/> No	<input checked="" type="checkbox"/> Yes <input type="checkbox"/> No		
OC	Was the OCD contacted?	<input type="checkbox"/> Yes <input checked="" type="checkbox"/> No	<input type="checkbox"/> Yes <input checked="" type="checkbox"/> No	<input type="checkbox"/> Yes <input checked="" type="checkbox"/> No	<input type="checkbox"/> Yes <input checked="" type="checkbox"/> No	<input type="checkbox"/> Yes <input checked="" type="checkbox"/> No	<input type="checkbox"/> Yes <input checked="" type="checkbox"/> No	<input type="checkbox"/> Yes <input checked="" type="checkbox"/> No	<input type="checkbox"/> Yes <input type="checkbox"/> No	<input type="checkbox"/> Yes <input checked="" type="checkbox"/> No	
	PICTURE TAKEN	<input type="checkbox"/> Yes <input checked="" type="checkbox"/> No	<input type="checkbox"/> Yes <input checked="" type="checkbox"/> No	<input type="checkbox"/> Yes <input checked="" type="checkbox"/> No	<input type="checkbox"/> Yes <input checked="" type="checkbox"/> No	<input type="checkbox"/> Yes <input checked="" type="checkbox"/> No	<input type="checkbox"/> Yes <input checked="" type="checkbox"/> No	<input type="checkbox"/> Yes <input checked="" type="checkbox"/> No	<input type="checkbox"/> Yes <input type="checkbox"/> No	<input type="checkbox"/> Yes <input checked="" type="checkbox"/> No	
	COMMENTS	Cattle guard needs cleaned	No repairs tighten up fence crappy job of fence installation	No diversion ditches no repairs	No repairs	Full back crew on location	No repairs contact Flint	Nor fix fence	Drake ng on location	Pit had oil & boom in it	

WELL NAME: Atlantic B Com 9M										
INSPECTOR		Fred Mtz	Fred Mtz	FRED MTZ	FRED MTZ	Fred Mtz	F.MTZ			
DATE		05/22/11	05/31/11	06/06/11	06/13/11	06/20/11	06/29/11			
*Please request for pit extension after 26 weeks		Week 10	Week 11	Week 12	Week 13	Week 14	Week 15	Week 16	Week 17	Week 18
PIT STATUS		<input checked="" type="checkbox"/> Drilled <input type="checkbox"/> Completed <input type="checkbox"/> Clean-Up	<input checked="" type="checkbox"/> Drilled <input type="checkbox"/> Completed <input type="checkbox"/> Clean-Up	<input type="checkbox"/> Drilled <input type="checkbox"/> Completed <input type="checkbox"/> Clean-Up	<input checked="" type="checkbox"/> Drilled <input checked="" type="checkbox"/> Completed <input type="checkbox"/> Clean-Up	<input checked="" type="checkbox"/> Drilled <input checked="" type="checkbox"/> Completed <input type="checkbox"/> Clean-Up	<input checked="" type="checkbox"/> Drilled <input checked="" type="checkbox"/> Completed <input type="checkbox"/> Clean-Up	<input type="checkbox"/> Drilled <input type="checkbox"/> Completed <input type="checkbox"/> Clean-Up	<input type="checkbox"/> Drilled <input type="checkbox"/> Completed <input type="checkbox"/> Clean-Up	<input type="checkbox"/> Drilled <input type="checkbox"/> Completed <input type="checkbox"/> Clean-Up
LOCATION	Is the location marked with the proper flagging? (Const. Zone, poles, pipelines, etc.)	<input checked="" type="checkbox"/> Yes <input type="checkbox"/> No	<input checked="" type="checkbox"/> Yes <input type="checkbox"/> No	<input type="checkbox"/> Yes <input type="checkbox"/> No	<input checked="" type="checkbox"/> Yes <input type="checkbox"/> No	<input checked="" type="checkbox"/> Yes <input type="checkbox"/> No	<input checked="" type="checkbox"/> Yes <input type="checkbox"/> No	<input type="checkbox"/> Yes <input type="checkbox"/> No	<input type="checkbox"/> Yes <input type="checkbox"/> No	<input type="checkbox"/> Yes <input type="checkbox"/> No
	Is the temporary well sign on location and visible from access road?	<input checked="" type="checkbox"/> Yes <input type="checkbox"/> No	<input checked="" type="checkbox"/> Yes <input type="checkbox"/> No	<input checked="" type="checkbox"/> Yes <input type="checkbox"/> No	<input checked="" type="checkbox"/> Yes <input type="checkbox"/> No	<input checked="" type="checkbox"/> Yes <input type="checkbox"/> No	<input checked="" type="checkbox"/> Yes <input type="checkbox"/> No	<input type="checkbox"/> Yes <input type="checkbox"/> No	<input type="checkbox"/> Yes <input type="checkbox"/> No	<input type="checkbox"/> Yes <input type="checkbox"/> No
ENVIRONMENTAL COMPLIANCE	Is the access road in good driving condition? (deep ruts, bladed)	<input checked="" type="checkbox"/> Yes <input type="checkbox"/> No	<input checked="" type="checkbox"/> Yes <input type="checkbox"/> No	<input checked="" type="checkbox"/> Yes <input type="checkbox"/> No	<input checked="" type="checkbox"/> Yes <input type="checkbox"/> No	<input checked="" type="checkbox"/> Yes <input type="checkbox"/> No	<input checked="" type="checkbox"/> Yes <input type="checkbox"/> No	<input type="checkbox"/> Yes <input type="checkbox"/> No	<input type="checkbox"/> Yes <input type="checkbox"/> No	<input type="checkbox"/> Yes <input type="checkbox"/> No
	Are the culverts free from debris or any object preventing flow?	<input checked="" type="checkbox"/> Yes <input type="checkbox"/> No	<input checked="" type="checkbox"/> Yes <input type="checkbox"/> No	<input checked="" type="checkbox"/> Yes <input type="checkbox"/> No	<input checked="" type="checkbox"/> Yes <input type="checkbox"/> No	<input checked="" type="checkbox"/> Yes <input type="checkbox"/> No	<input checked="" type="checkbox"/> Yes <input type="checkbox"/> No	<input type="checkbox"/> Yes <input type="checkbox"/> No	<input type="checkbox"/> Yes <input type="checkbox"/> No	<input type="checkbox"/> Yes <input type="checkbox"/> No
	Is the top of the location bladed and in good operating condition?	<input checked="" type="checkbox"/> Yes <input type="checkbox"/> No	<input checked="" type="checkbox"/> Yes <input type="checkbox"/> No	<input checked="" type="checkbox"/> Yes <input type="checkbox"/> No	<input checked="" type="checkbox"/> Yes <input type="checkbox"/> No	<input checked="" type="checkbox"/> Yes <input type="checkbox"/> No	<input checked="" type="checkbox"/> Yes <input type="checkbox"/> No	<input type="checkbox"/> Yes <input type="checkbox"/> No	<input type="checkbox"/> Yes <input type="checkbox"/> No	<input type="checkbox"/> Yes <input type="checkbox"/> No
	Is the fence stock-proof? (fences tight, barbed wire, fence clips in place?)	<input type="checkbox"/> Yes <input checked="" type="checkbox"/> No	<input checked="" type="checkbox"/> Yes <input type="checkbox"/> No	<input checked="" type="checkbox"/> Yes <input type="checkbox"/> No	<input checked="" type="checkbox"/> Yes <input type="checkbox"/> No	<input checked="" type="checkbox"/> Yes <input type="checkbox"/> No	<input checked="" type="checkbox"/> Yes <input type="checkbox"/> No	<input type="checkbox"/> Yes <input type="checkbox"/> No	<input type="checkbox"/> Yes <input type="checkbox"/> No	<input type="checkbox"/> Yes <input type="checkbox"/> No
	Is the pit liner in good operating condition? (no tears, up-rooting corners, etc.)	<input checked="" type="checkbox"/> Yes <input type="checkbox"/> No	<input checked="" type="checkbox"/> Yes <input type="checkbox"/> No	<input checked="" type="checkbox"/> Yes <input type="checkbox"/> No	<input checked="" type="checkbox"/> Yes <input type="checkbox"/> No	<input checked="" type="checkbox"/> Yes <input type="checkbox"/> No	<input checked="" type="checkbox"/> Yes <input type="checkbox"/> No	<input type="checkbox"/> Yes <input type="checkbox"/> No	<input type="checkbox"/> Yes <input type="checkbox"/> No	<input type="checkbox"/> Yes <input type="checkbox"/> No
	Is the the location free from trash, oil stains and other materials? (cables, pipe threads, etc.)	<input type="checkbox"/> Yes <input checked="" type="checkbox"/> No	<input checked="" type="checkbox"/> Yes <input type="checkbox"/> No	<input checked="" type="checkbox"/> Yes <input type="checkbox"/> No	<input checked="" type="checkbox"/> Yes <input type="checkbox"/> No	<input checked="" type="checkbox"/> Yes <input type="checkbox"/> No	<input checked="" type="checkbox"/> Yes <input type="checkbox"/> No	<input type="checkbox"/> Yes <input type="checkbox"/> No	<input type="checkbox"/> Yes <input type="checkbox"/> No	<input type="checkbox"/> Yes <input type="checkbox"/> No
	Does the pit contain two feet of free board? (check the water levels)	<input checked="" type="checkbox"/> Yes <input type="checkbox"/> No	<input checked="" type="checkbox"/> Yes <input type="checkbox"/> No	<input checked="" type="checkbox"/> Yes <input type="checkbox"/> No	<input checked="" type="checkbox"/> Yes <input type="checkbox"/> No	<input checked="" type="checkbox"/> Yes <input type="checkbox"/> No	<input checked="" type="checkbox"/> Yes <input type="checkbox"/> No	<input type="checkbox"/> Yes <input type="checkbox"/> No	<input type="checkbox"/> Yes <input type="checkbox"/> No	<input type="checkbox"/> Yes <input type="checkbox"/> No
	Is there any standing water on the blow pit?	<input checked="" type="checkbox"/> Yes <input type="checkbox"/> No	<input checked="" type="checkbox"/> Yes <input type="checkbox"/> No	<input checked="" type="checkbox"/> Yes <input type="checkbox"/> No	<input checked="" type="checkbox"/> Yes <input type="checkbox"/> No	<input type="checkbox"/> Yes <input checked="" type="checkbox"/> No	<input type="checkbox"/> Yes <input checked="" type="checkbox"/> No	<input type="checkbox"/> Yes <input type="checkbox"/> No	<input type="checkbox"/> Yes <input type="checkbox"/> No	<input type="checkbox"/> Yes <input type="checkbox"/> No
	Are the pits free of trash and oil?	<input type="checkbox"/> Yes <input checked="" type="checkbox"/> No	<input checked="" type="checkbox"/> Yes <input type="checkbox"/> No	<input checked="" type="checkbox"/> Yes <input type="checkbox"/> No	<input checked="" type="checkbox"/> Yes <input type="checkbox"/> No	<input checked="" type="checkbox"/> Yes <input type="checkbox"/> No	<input checked="" type="checkbox"/> Yes <input type="checkbox"/> No	<input type="checkbox"/> Yes <input type="checkbox"/> No	<input type="checkbox"/> Yes <input type="checkbox"/> No	<input type="checkbox"/> Yes <input type="checkbox"/> No
	Are there diversion ditches around the pits for natural drainage?	<input checked="" type="checkbox"/> Yes <input type="checkbox"/> No	<input checked="" type="checkbox"/> Yes <input type="checkbox"/> No	<input checked="" type="checkbox"/> Yes <input type="checkbox"/> No	<input checked="" type="checkbox"/> Yes <input type="checkbox"/> No	<input checked="" type="checkbox"/> Yes <input type="checkbox"/> No	<input checked="" type="checkbox"/> Yes <input type="checkbox"/> No	<input type="checkbox"/> Yes <input type="checkbox"/> No	<input type="checkbox"/> Yes <input type="checkbox"/> No	<input type="checkbox"/> Yes <input type="checkbox"/> No
	Is there a Manifold on location?	<input checked="" type="checkbox"/> Yes <input type="checkbox"/> No	<input checked="" type="checkbox"/> Yes <input type="checkbox"/> No	<input checked="" type="checkbox"/> Yes <input type="checkbox"/> No	<input checked="" type="checkbox"/> Yes <input type="checkbox"/> No	<input checked="" type="checkbox"/> Yes <input type="checkbox"/> No	<input checked="" type="checkbox"/> Yes <input type="checkbox"/> No	<input type="checkbox"/> Yes <input type="checkbox"/> No	<input type="checkbox"/> Yes <input type="checkbox"/> No	<input type="checkbox"/> Yes <input type="checkbox"/> No
Is the Manifold free of leaks? Are the hoses in good condition?	<input checked="" type="checkbox"/> Yes <input type="checkbox"/> No	<input checked="" type="checkbox"/> Yes <input type="checkbox"/> No	<input checked="" type="checkbox"/> Yes <input type="checkbox"/> No	<input checked="" type="checkbox"/> Yes <input type="checkbox"/> No	<input checked="" type="checkbox"/> Yes <input type="checkbox"/> No	<input checked="" type="checkbox"/> Yes <input type="checkbox"/> No	<input type="checkbox"/> Yes <input type="checkbox"/> No	<input type="checkbox"/> Yes <input type="checkbox"/> No	<input type="checkbox"/> Yes <input type="checkbox"/> No	
OC <input type="checkbox"/> Was the OCD contacted?	<input type="checkbox"/> Yes <input checked="" type="checkbox"/> No	<input type="checkbox"/> Yes <input checked="" type="checkbox"/> No	<input type="checkbox"/> Yes <input checked="" type="checkbox"/> No	<input type="checkbox"/> Yes <input checked="" type="checkbox"/> No	<input type="checkbox"/> Yes <input checked="" type="checkbox"/> No	<input type="checkbox"/> Yes <input checked="" type="checkbox"/> No	<input type="checkbox"/> Yes <input checked="" type="checkbox"/> No	<input type="checkbox"/> Yes <input type="checkbox"/> No	<input type="checkbox"/> Yes <input type="checkbox"/> No	<input type="checkbox"/> Yes <input type="checkbox"/> No
PICTURE TAKEN		<input type="checkbox"/> Yes <input checked="" type="checkbox"/> No	<input type="checkbox"/> Yes <input checked="" type="checkbox"/> No	<input type="checkbox"/> Yes <input checked="" type="checkbox"/> No	<input type="checkbox"/> Yes <input checked="" type="checkbox"/> No	<input type="checkbox"/> Yes <input checked="" type="checkbox"/> No	<input type="checkbox"/> Yes <input checked="" type="checkbox"/> No	<input type="checkbox"/> Yes <input type="checkbox"/> No	<input type="checkbox"/> Yes <input type="checkbox"/> No	<input type="checkbox"/> Yes <input type="checkbox"/> No
COMMENTS		oil cleaned up, from air jammer Contact Flint for clean up. Pit has some kind of debris in it	no repairs	no repairs	No Repairs, Facility crew on location	No Repairs	NO REPAIRS			