

District I
1625 N French Dr, Hobbs, NM 88240

District II
1301 W Grand Ave, Artesia, NM 88210

District III
1000 Rio Brazos Rd, Aztec, NM 87410

District IV
1220 S St Francis Dr, Santa Fe, NM 87505

State of New Mexico
Energy Minerals and Natural Resources

Department
Oil Conservation Division
1220 South St. Francis Dr.
Santa Fe, NM 87505

Form C-144
July 21, 2008

For temporary pits, closed-loop systems, and below-grade tanks, submit to the appropriate NMOCD District Office

For permanent pits and exceptions submit to the Santa Fe Environmental Bureau office and provide a copy to the appropriate NMOCD District Office

Pit, Closed-Loop System, Below-Grade Tank, or
Proposed Alternative Method Permit or Closure Plan Application

- 8179 Type of action: ☐ Permit of a pit, closed-loop system, below-grade tank, or proposed alternative method
☒ Closure of a pit, closed-loop system, below-grade tank, or proposed alternative method
☐ Modification to an existing permit
☐ Closure plan only submitted for an existing permitted or non-permitted pit, closed-loop system, below-grade tank, or proposed alternative method

Instructions: Please submit one application (Form C-144) per individual pit, closed-loop system, below-grade tank or alternative request

Please be advised that approval of this request does not relieve the operator of liability should operations result in pollution of surface water, ground water or the environment. Nor does approval relieve the operator of its responsibility to comply with any other applicable governmental authority's rules, regulations or ordinances.

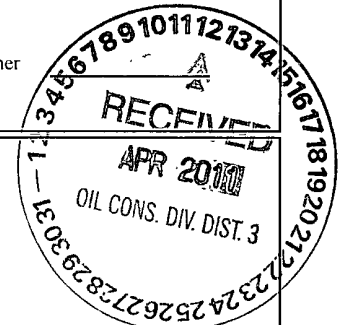
| | |
|--|--|
| 1 | |
| Operator: Burlington Resources Oil & Gas Company, LP | OGRID#: 14538 |
| Address: P.O. Box 4289, Farmington, NM 87499 | |
| Facility or well name: SAN JUAN 28-6 UNIT 143P | |
| API Number: 30-039-30805 | OCD Permit Number |
| U/L or Qtr/Qtr: K(NE/SW) | Section: 20 Township: 28N Range: 6W County: Rio Arriba |
| Center of Proposed Design: Latitude: 36.6436 °N | Longitude: 107.49407 °W NAD: <input type="checkbox"/> 1927 <input checked="" type="checkbox"/> 1983 |
| Surface Owner: <input checked="" type="checkbox"/> Federal <input type="checkbox"/> State <input type="checkbox"/> Private <input type="checkbox"/> Tribal Trust or Indian Allotment | |

| | |
|---|---|
| 2 | |
| <input checked="" type="checkbox"/> Pit: Subsection F or G of 19 15 17 11 NMAC | |
| Temporary | <input checked="" type="checkbox"/> Drilling <input type="checkbox"/> Workover |
| <input type="checkbox"/> Permanent | <input type="checkbox"/> Emergency <input type="checkbox"/> Cavitation <input type="checkbox"/> P&A |
| <input checked="" type="checkbox"/> Lined | <input type="checkbox"/> Unlined Liner type Thickness 20 mil <input checked="" type="checkbox"/> LLDPE <input type="checkbox"/> HDPE <input type="checkbox"/> PVC <input type="checkbox"/> Other |
| <input checked="" type="checkbox"/> String-Reinforced | |
| Liner Seams | <input checked="" type="checkbox"/> Welded <input checked="" type="checkbox"/> Factory <input type="checkbox"/> Other Volume 7700 bbl Dimensions L 120' x W 55' x D 12' |

| | |
|--|--|
| 3 | |
| <input type="checkbox"/> Closed-loop System: Subsection H of 19 15 17 11 NMAC | |
| Type of Operation | <input type="checkbox"/> P&A <input type="checkbox"/> Drilling a new well <input type="checkbox"/> Workover or Drilling (Applies to activities which require prior approval of a permit or notice of intent) |
| <input type="checkbox"/> Drying Pad | <input type="checkbox"/> Above Ground Steel Tanks <input type="checkbox"/> Haul-off Bins <input type="checkbox"/> Other |
| <input type="checkbox"/> Lined | <input type="checkbox"/> Unlined Liner type Thickness mil <input type="checkbox"/> LLDPE <input type="checkbox"/> HDPE <input type="checkbox"/> PVD <input type="checkbox"/> Other |
| Liner Seams | <input type="checkbox"/> Welded <input type="checkbox"/> Factory <input type="checkbox"/> Other |

| | |
|--|---|
| 4 | |
| <input type="checkbox"/> Below-grade tank: Subsection I of 19 15 17 11 NMAC | |
| Volume | bbl Type of fluid |
| Tank Construction material | |
| <input type="checkbox"/> Secondary containment with leak detection | <input type="checkbox"/> Visible sidewalls, liner, 6-inch lift and automatic overflow shut-off |
| <input type="checkbox"/> Visible sidewalls and liner | <input type="checkbox"/> Visible sidewalls only <input type="checkbox"/> Other |
| Liner Type | Thickness mil <input type="checkbox"/> HDPE <input type="checkbox"/> PVC <input type="checkbox"/> Other |

| | |
|--|--|
| 5 | |
| <input type="checkbox"/> Alternative Method: | |
| Submittal of an exception request is required. Exceptions must be submitted to the Santa Fe Environmental Bureau office for consideration of approval. | |



6
Fencing: Subsection D of 19 15 17 11 NMAC (*Applies to permanent pit, temporary pits, and below-grade tanks*)

- ☐ Chain link, six feet in height, two strands of barbed wire at top (*Required if located within 1000 feet of a permanent residence, school, hospital, institution or church*)
- ☐ Four foot height, four strands of barbed wire evenly spaced between one and four feet
- ☐ Alternate Please specify _____

7
Netting: Subsection E of 19 15.17 11 NMAC (*Applies to permanent pits and permanent open top tanks*)

- ☐ Screen ☐ Netting ☐ Other _____
- ☐ Monthly inspections (*If netting or screening is not physically feasible*)

8
Signs: Subsection C of 19 15 17 11 NMAC

- ☐ 12" X 24", 2" lettering, providing Operator's name, site location, and emergency telephone numbers
- ☒ Signed in compliance with 19 15 3 103 NMAC

9
Administrative Approvals and Exceptions:
Justifications and/or demonstrations of equivalency are required Please refer to 19 15 17 NMAC for guidance

Please check a box if one or more of the following is requested, if not leave blank:

- ☐ Administrative approval(s) Requests must be submitted to the appropriate division district of the Santa Fe Environmental Bureau office for consideration of approval.
(Fencing/BGT Liner)
- ☐ Exception(s): Requests must be submitted to the Santa Fe Environmental Bureau office for consideration of approval

10
Siting Criteria (regarding permitting): 19 15.17.10 NMAC

Instructions: The applicant must demonstrate compliance for each siting criteria below in the application. Recommendations of acceptable source material are provided below. Requests regarding changes to certain siting criteria may require administrative approval from the appropriate district office or may be considered an exception which must be submitted to the Santa Fe Environmental Bureau Office for consideration of approval. Applicant must attach justification for request. Please refer to 19.15.17.10 NMAC for guidance. Siting criteria does not apply to drying pads or above grade-tanks associated with a closed-loop system.

Ground water is less than 50 feet below the bottom of the temporary pit, permanent pit, or below-grade tank.

- NM Office of the State Engineer - iWATERS database search, USGS; Data obtained from nearby wells

☐ Yes ☐ No

Within 300 feet of a continuously flowing watercourse, or 200 feet of any other watercourse, lakebed, sinkhole, or playa lake (measured from the ordinary high-water mark).

- Topographic map; Visual inspection (certification) of the proposed site

☐ Yes ☐ No

Within 300 feet from a permanent residence, school, hospital, institution, or church in existence at the time of initial application.

(*Applies to temporary, emergency, or cavitation pits and below-grade tanks*)

- Visual inspection (certification) of the proposed site, Aerial photo, Satellite image

☐ Yes ☐ No

☐ NA

Within 1000 feet from a permanent residence, school, hospital, institution, or church in existence at the time of initial application.

(*Applied to permanent pits*)

- Visual inspection (certification) of the proposed site, Aerial photo; Satellite image

☐ Yes ☐ No

☐ NA

Within 500 horizontal feet of a private, domestic fresh water well or spring that less than five households use for domestic or stock watering purposes, or within 1000 horizontal feet of any other fresh water well or spring, in existence at the time of initial application.

- NM Office of the State Engineer - iWATERS database search; Visual inspection (certification) of the proposed site

☐ Yes ☐ No

Within incorporated municipal boundaries or within a defined municipal fresh water well field covered under a municipal ordinance adopted pursuant to NMSA 1978, Section 3-27-3, as amended

- Written confirmation or verification from the municipality, Written approval obtained from the municipality

☐ Yes ☐ No

Within 500 feet of a wetland.

- US Fish and Wildlife Wetland Identification map; Topographic map; Visual inspection (certification) of the proposed site

☐ Yes ☐ No

Within the area overlying a subsurface mine.

- Written confirmation or verification or map from the NM EMNRD - Mining and Mineral Division

☐ Yes ☐ No

Within an unstable area.

- Engineering measures incorporated into the design, NM Bureau of Geology & Mineral Resources; USGS; NM Geological Society; Topographic map

☐ Yes ☐ No

Within a 100-year floodplain

- FEMA map

☐ Yes ☐ No

11

Temporary Pits, Emergency Pits and Below-grade Tanks Permit Application Attachment Checklist: Subsection B of 19.15.17.9 NMAC
Instructions: Each of the following items must be attached to the application. Please indicate, by a check mark in the box, that the documents are attached.

- ☐ Hydrogeologic Report (Below-grade Tanks) - based upon the requirements of Paragraph (4) of Subsection B of 19.15.17.9 NMAC
- ☐ Hydrogeologic Data (Temporary and Emergency Pits) - based upon the requirements of Paragraph (2) of Subsection B of 19.15.17.9 NMAC
- ☐ Siting Criteria Compliance Demonstrations - based upon the appropriate requirements of 19.15.17.10 NMAC
- ☐ Design Plan - based upon the appropriate requirements of 19.15.17.11 NMAC
- ☐ Operating and Maintenance Plan - based upon the appropriate requirements of 19.15.17.12 NMAC
- ☐ Closure Plan (Please complete Boxes 14 through 18, if applicable) - based upon the appropriate requirements of Subsection C of 19.15.17.9 NMAC and 19.15.17.13 NMAC

☐ Previously Approved Design (attach copy of design) API _____ or Permit _____

12

Closed-loop Systems Permit Application Attachment Checklist: Subsection B of 19.15.17.9 NMAC

Instructions: Each of the following items must be attached to the application. Please indicate, by a check mark in the box, that the documents are attached.

- ☐ Geologic and Hydrogeologic Data (only for on-site closure) - based upon the requirements of Paragraph (3) of Subsection B of 19.15.17.9 NMAC
- ☐ Siting Criteria Compliance Demonstrations (only for on-site closure) - based upon the appropriate requirements of 19.15.17.10 NMAC
- ☐ Design Plan - based upon the appropriate requirements of 19.15.17.11 NMAC
- ☐ Operating and Maintenance Plan - based upon the appropriate requirements of 19.15.17.12 NMAC
- ☐ Closure Plan (Please complete Boxes 14 through 18, if applicable) - based upon the appropriate requirements of Subsection C of 19.15.17.9 NMAC and 19.15.17.13 NMAC

☐ Previously Approved Design (attach copy of design) API _____

☐ Previously Approved Operating and Maintenance Plan API _____

13

Permanent Pits Permit Application Checklist: Subsection B of 19.15.17.9 NMAC

Instructions: Each of the following items must be attached to the application. Please indicate, by a check mark in the box, that the documents are attached.

- ☐ Hydrogeologic Report - based upon the requirements of Paragraph (1) of Subsection B of 19.15.17.9 NMAC
- ☐ Siting Criteria Compliance Demonstrations - based upon the appropriate requirements of 19.15.17.10 NMAC
- ☐ Climatological Factors Assessment
- ☐ Certified Engineering Design Plans - based upon the appropriate requirements of 19.15.17.11 NMAC
- ☐ Dike Protection and Structural Integrity Design: based upon the appropriate requirements of 19.15.17.11 NMAC
- ☐ Leak Detection Design - based upon the appropriate requirements of 19.15.17.11 NMAC
- ☐ Liner Specifications and Compatibility Assessment - based upon the appropriate requirements of 19.15.17.11 NMAC
- ☐ Quality Control/Quality Assurance Construction and Installation Plan
- ☐ Operating and Maintenance Plan - based upon the appropriate requirements of 19.15.17.12 NMAC
- ☐ Freeboard and Overtopping Prevention Plan - based upon the appropriate requirements of 19.15.17.11 NMAC
- ☐ Nuisance or Hazardous Odors, including H₂S, Prevention Plan
- ☐ Emergency Response Plan
- ☐ Oil Field Waste Stream Characterization
- ☐ Monitoring and Inspection Plan
- ☐ Erosion Control Plan
- ☐ Closure Plan - based upon the appropriate requirements of Subsection C of 19.15.17.9 NMAC and 19.15.17.13 NMAC

14

Proposed Closure: 19.15.17.13 NMAC

Instructions: Please complete the applicable boxes, Boxes 14 through 18, in regards to the proposed closure plan.

Type: ☐ Drilling ☐ Workover ☐ Emergency ☐ Cavitation ☐ P&A ☐ Permanent Pit ☐ Below-grade Tank ☐ Closed-loop System
☐ Alternative

Proposed Closure Method ☐ Waste Excavation and Removal
☐ Waste Removal (Closed-loop systems only)
☐ On-site Closure Method (only for temporary pits and closed-loop systems)
☐ In-place Burial ☐ On-site Trench
☐ Alternative Closure Method (Exceptions must be submitted to the Santa Fe Environmental Bureau for consideration)

15

Waste Excavation and Removal Closure Plan Checklist: (19.15.17.13 NMAC) *Instructions: Each of the following items must be attached to the closure plan. Please indicate, by a check mark in the box, that the documents are attached.*

- ☐ Protocols and Procedures - based upon the appropriate requirements of 19.15.17.13 NMAC
- ☐ Confirmation Sampling Plan (if applicable) - based upon the appropriate requirements of Subsection F of 19.15.17.13 NMAC
- ☐ Disposal Facility Name and Permit Number (for liquids, drilling fluids and drill cuttings)
- ☐ Soil Backfill and Cover Design Specifications - based upon the appropriate requirements of Subsection H of 19.15.17.13 NMAC
- ☐ Re-vegetation Plan - based upon the appropriate requirements of Subsection I of 19.15.17.13 NMAC
- ☐ Site Reclamation Plan - based upon the appropriate requirements of Subsection G of 19.15.17.13 NMAC

Waste Removal Closure For Closed-loop Systems That Utilize Above Ground Steel Tanks or Haul-off Bins Only: (19 15 17 13 D NMAC)

Instructions: Please identify the facility or facilities for the disposal of liquids, drilling fluids and drill cuttings. Use attachment if more than two facilities are required.

Disposal Facility Name _____ Disposal Facility Permit # _____

Disposal Facility Name _____ Disposal Facility Permit # _____

Will any of the proposed closed-loop system operations and associated activities occur on or in areas that *will not* be used for future service and

☐ Yes (If yes, please provide the information) ☐ No

Required for impacted areas which will not be used for future service and operations.

☐ Soil Backfill and Cover Design Specification - based upon the appropriate requirements of Subsection H of 19 15 17 13 NMAC

☐ Re-vegetation Plan - based upon the appropriate requirements of Subsection I of 19 15 17 13 NMAC

☐ Site Reclamation Plan - based upon the appropriate requirements of Subsection G of 19 15 17 13 NMAC

Siting Criteria (Regarding on-site closure methods only): 19 15 17 10 NMAC

Instructions: Each siting criteria requires a demonstration of compliance in the closure plan. Recommendations of acceptable source material are provided below. Requests regarding changes to certain siting criteria may require administrative approval from the appropriate district office or may be considered an exception which must be submitted to the Santa Fe Environmental Bureau office for consideration of approval. Justifications and/or demonstrations of equivalency are required. Please refer to 19.15 17 10 NMAC for guidance.

Ground water is less than 50 feet below the bottom of the buried waste

- NM Office of the State Engineer - iWATERS database search, USGS, Data obtained from nearby wells

☐ Yes ☐ No

☐ N/A

Ground water is between 50 and 100 feet below the bottom of the buried waste

- NM Office of the State Engineer - iWATERS database search; USGS, Data obtained from nearby wells

☐ Yes ☐ No

☐ N/A

Ground water is more than 100 feet below the bottom of the buried waste

- NM Office of the State Engineer - iWATERS database search, USGS, Data obtained from nearby wells

☐ Yes ☐ No

☐ N/A

Within 300 feet of a continuously flowing watercourse, or 200 feet of any other significant watercourse or lakebed, sinkhole, or playa lake (measured from the ordinary high-water mark)

- Topographic map, Visual inspection (certification) of the proposed site

☐ Yes ☐ No

Within 300 feet from a permanent residence, school, hospital, institution, or church in existence at the time of initial application

- Visual inspection (certification) of the proposed site; Aerial photo, satellite image

☐ Yes ☐ No

☐ Yes ☐ No

Within 500 horizontal feet of a private, domestic fresh water well or spring that less than five households use for domestic or stock watering purposes, or within 1000 horizontal feet of any other fresh water well or spring, in existence at the time of the initial application

- NM Office of the State Engineer - iWATERS database, Visual inspection (certification) of the proposed site

☐ Yes ☐ No

Within incorporated municipal boundaries or within a defined municipal fresh water well field covered under a municipal ordinance adopted pursuant to NMSA 1978, Section 3-27-3, as amended

- Written confirmation or verification from the municipality; Written approval obtained from the municipality

☐ Yes ☐ No

Within 500 feet of a wetland

- US Fish and Wildlife Wetland Identification map, Topographic map, Visual inspection (certification) of the proposed site

☐ Yes ☐ No

Within the area overlying a subsurface mine

- Written confirmation or verification or map from the NM EMNRD-Mining and Mineral Division

☐ Yes ☐ No

Within an unstable area

- Engineering measures incorporated into the design, NM Bureau of Geology & Mineral Resources, USGS; NM Geological Society; Topographic map

☐ Yes ☐ No

Within a 100-year floodplain

- FEMA map

☐ Yes ☐ No

On-Site Closure Plan Checklist: (19 15 17 13 NMAC) *Instructions: Each of the following items must be attached to the closure plan. Please indicate, by a check mark in the box, that the documents are attached.*

☐ Siting Criteria Compliance Demonstrations - based upon the appropriate requirements of 19 15 17 10 NMAC

☐ Proof of Surface Owner Notice - based upon the appropriate requirements of Subsection F of 19 15 17 13 NMAC

☐ Construction/Design Plan of Burial Trench (if applicable) based upon the appropriate requirements of 19 15 17 11 NMAC

☐ Construction/Design Plan of Temporary Pit (for in place burial of a drying pad) - based upon the appropriate requirements of 19.15 17 11 NMAC

☐ Protocols and Procedures - based upon the appropriate requirements of 19 15 17 13 NMAC

☐ Confirmation Sampling Plan (if applicable) - based upon the appropriate requirements of Subsection F of 19 15 17 13 NMAC

☐ Waste Material Sampling Plan - based upon the appropriate requirements of Subsection F of 19.15 17 13 NMAC

☐ Disposal Facility Name and Permit Number (for liquids, drilling fluids and drill cuttings or in case on-site closure standards cannot be achieved)

☐ Soil Cover Design - based upon the appropriate requirements of Subsection H of 19 15 17 13 NMAC

☐ Re-vegetation Plan - based upon the appropriate requirements of Subsection I of 19 15 17 13 NMAC

☐ Site Reclamation Plan - based upon the appropriate requirements of Subsection G of 19 15 17 13 NMAC

19
Operator Application Certification:
 I hereby certify that the information submitted with this application is true, accurate and complete to the best of my knowledge and belief

Name (Print) _____ Title _____
 Signature _____ Date _____
 e-mail address _____ Telephone _____

20
OCD Approval: ☐ Permit Application (including closure plan) ☒ Closure Plan (only) ☐ OCD Conditions (see attachment)

OCD Representative Signature: Jonathan D. Kelly Approval Date: 6/26/2012
 Title: Compliance Officer OCD Permit Number: _____

21
Closure Report (required within 60 days of closure completion): Subsection K of 19 15 17 13 NMAC
Instructions: Operators are required to obtain an approved closure plan prior to implementing any closure activities and submitting the closure report. The closure report is required to be submitted to the division within 60 days of the completion of the closure activities. Please do not complete this section of the form until an approved closure plan has been obtained and the closure activities have been completed

☒ Closure Completion Date: September 22, 2010

22
Closure Method:

☐ Waste Excavation and Removal ☒ On-site Closure Method ☐ Alternative Closure Method ☐ Waste Removal (Closed-loop systems only)
☐ If different from approved plan, please explain _____

23
Closure Report Regarding Waste Removal Closure For Closed-loop Systems That Utilize Above Ground Steel Tanks or Haul-off Bins Only:
Instructions: Please identify the facility or facilities for where the liquids, drilling fluids and drill cuttings were disposed. Use attachment if more than two facilities were utilized.

Disposal Facility Name _____ Disposal Facility Permit Number: _____
 Disposal Facility Name _____ Disposal Facility Permit Number: _____

Were the closed-loop system operations and associated activities performed on or in areas that *will not* be used for future service and operations?
☐ Yes (If yes, please demonstrate compliance to the items below) ☐ No

Required for impacted areas which will not be used for future service and operations
☐ Site Reclamation (Photo Documentation)
☐ Soil Backfilling and Cover Installation
☐ Re-vegetation Application Rates and Seeding Technique

24
Closure Report Attachment Checklist: *Instructions: Each of the following items must be attached to the closure report. Please indicate, by a check mark in the box, that the documents are attached.*

☒ Proof of Closure Notice (surface owner and division)
☒ Proof of Deed Notice (required for on-site closure)
☒ Plot Plan (for on-site closures and temporary pits)
☒ Confirmation Sampling Analytical Results (if applicable)
☐ Waste Material Sampling Analytical Results (if applicable)
☒ Disposal Facility Name and Permit Number
☒ Soil Backfilling and Cover Installation
☒ Re-vegetation Application Rates and Seeding Technique
☒ Site Reclamation (Photo Documentation)

On-site Closure Location: Latitude 36.64364 °N Longitude 107.49378 °W NAD ☐ 1927 ☒ 1983

25
Operator Closure Certification:
 I hereby certify that the information and attachments submitted with this closure report is true, accurate and complete to the best of my knowledge and belief. I also certify that the closure complies with all applicable closure requirements and conditions specified in the approved closure plan

Name (Print) Jamie Goodwin Title Regulatory Tech
 Signature: Jamie Goodwin Date: 4/5/11
 e-mail address Jamie.L.Goodwin@conocophillips.com Telephone 505-326-9784

**Burlington Resources Oil Gas Company, LP
San Juan Basin
Closure Report**

Lease Name: SAN JUAN 28-6 UNIT 143P

API No.: 30-039-30805

In accordance with Rule 19.15.17.13 NMAC the following information describes the closure of the temporary pit referenced above. All proper documentation regarding closure activities is being included with the C-144. The temporary pit for this location was constructed and location drilled before June 16, 2008 (effective date for Rule 19.15.17). While closure of the temporary pit did fall within the rule some dates for submittals are after the rig release date.

- Details on Capping and Covering, where applicable. **(See report)**
- Plot Plan (Pit Diagram) **(Included as an attachment)**
- Inspection Reports **(Included as an attachment)**
- Sampling Results **(Included as an attachment)**
- C-105 **(Included as an attachment)**
- Copy of Deed Notice will be filed with County Clerk **(Not required on Federal, State, or Tribal land as stated by FAQ dated October 30, 2008)**

General Plan:

1. All free standing liquids will be removed at the start of the pit closure process from the pit and disposed of in a division–approved facility or recycle, reuse or reclaim the liquids in a manner that the appropriate division district office approves.

All recovered liquids were disposed of at Basin Disposal (Permit #NM-01-005) and any sludge or soil required to be removed to facilitate closure was hauled to Envirotech Land Farm (Permit #NM-01-011) and JFJ Landfarm % IEI (Permit #NM-01-0010B).

2. The preferred method of closure for all temporary pits will be on-site burial, assuming that all the criteria listed in sub-section (B) of 19.15.17.13 are met.

The pit was closed using onsite burial.

3. The surface owner shall be notified of BR's closing of the temporary pit as per the approved closure plan using certified mail, return receipt requested.

The closure process notification to the landowner was sent via email. (See Attached)(Well located on Federal Land, certified mail is not required for Federal Land per BLM/OCD MOU.)

4. Within 6 months of the Rig Off status occurring BR will ensure that temporary pits are closed, re-contoured, and reseeded.

Provision 4 of the closure plan requirements were not met due to rig move off date as noted on C-105 which was prior to pit rule change. Burlington will ensure compliance with this rule in the future.

5. Notice of Closure will be given to the Aztec Division office between 72 hours and one week of closure via email, or verbally. The notification of closure will include the following:
 - i. Operator's name
 - ii. Location by Unit Letter, Section, Township, and Range. Well name and API number.

Notification is attached.

6. Liner of temporary pit shall be removed above "mud level" after stabilization. Removal of liner will consist of manually or mechanically cutting liner at mud level and removing all remaining liner. Care will be taken to remove "All" of the liner i.e., edges of liner entrenched or buried. All excessive liner will be disposed of at a licensed disposal facility.

Liner of temporary pit was removed above "mud level" after stabilization. Removal of the liner consisted of manually cutting liner at mud level and removing all remaining liner. Care was taken to remove "ALL" of the liner i.e., edges of liner entrenched or buried. All excessive liner was disposed of at a licensed disposal facility, (San Juan County Landfill).

7. Pit contents shall be mixed with non-waste containing, earthen material in order to achieve the solidification process. The solidification process will be accomplished using a combination of natural drying and mechanically mixing. Pit contents will be mixed with non-waste, earthen material to a consistency that is deemed a safe and stable. The mixing ratio shall not exceed 3 parts clean soil to 1 part pit contents.

Burlington mixed the Pit contents with non-waste containing, earthen material in order to achieve the solidification process. The solidification process was accomplished by using a combination of natural drying and mechanically mixing. Pit contents were mixed with non-waste, earthen material to a consistency that is deemed as safe and stable. The mixing ratio consisted of approximately 3 parts clean soil to 1 part pit contents.

8. A five point composite sample will be taken of the pit using sampling tools and all samples tested per Subsection B of 19.15.17.13(B)(1)(b). In the event that the criteria are not met, all contents will be handled per Subparagraph (a) of Paragraph (1) of Subsection B of 19.15.17.13 i.e., Dig and haul.

A five point composite sample was taken of the pit using sampling tools and all samples tested per Subsection B of 19.15.17.13(B)(1)(b). (Sample results attached).

| Components | Tests Method | Limit (mg/Kg) | Results |
|------------|---------------------------|---------------|-----------|
| Benzene | EPA SW-846 8021B or 8260B | 0.2 | 5.8 ug/kg |
| BTEX | EPA SW-846 8021B or 8260B | 50 | 123 ug/kG |
| TPH | EPA SW-846 418.1 | 2500 | 2270mg/kg |
| GRO/DRO | EPA SW-846 8015M | 500 | 5.9 mg/Kg |
| Chlorides | EPA 300.1 | 1000/500 | 235 mg/L |

9. Upon completion of solidification and testing standards being passed, the pit area will be backfilled with compacted, non-waste containing, earthen material. A minimum of four feet of cover shall be achieved and the cover shall include one foot of suitable material to establish vegetation at the site, or the background thickness of topsoil, whichever is greater. If standard testing fails BR will dig and haul all contents pursuant to 19.15.17.13.i.a. After doing such, confirmation sampling will be conducted to ensure a release has not occurred.

The pit material passed solidification and testing standards. The pit area was then backfilled with compacted, non-waste containing, earthen material. More than four feet of cover was achieved and the cover included one foot of suitable material to establish vegetation at the site.

10. During the stabilization process if the liner is ripped by equipment the Aztec OCD office will be notified within 48 hours and the liner will be repaired if possible. If the liner can not be repaired then all contents will be excavated and removed.

The integrity of the liner was not damaged in the pit closure process.

11. Dig and Haul Material will be transported to the Envirotech Land Farm located 16 miles south of Bloomfield on Angel Peak Road, CR 7175. Permit # NM010011

Dig and Haul was not required.

12. Re-contouring of location will match fit, shape, line, form and texture of the surrounding. Re-shaping will include drainage control, prevent ponding, and prevent erosion. Natural drainages will be unimpeded and water bars and/or silt traps will be placed in areas where needed to prevent erosion on a large scale. Final re-contour shall have a uniform appearance with smooth surface, fitting the natural landscape.

The pit area was re-contoured to match fit, shape, line, form and texture of the surrounding area. Re-shaping included drainage control, to prevent ponding and erosion. Natural drainages were unimpeded and water bars and/or silt traps were placed in areas where needed to prevent erosion on a large scale. Final re-contour has a uniform appearance with smooth surface, fitting the natural landscape.

13. Notification will be sent to OCD when the reclaimed area is seeded.

Provision 13 was accomplished through complying with BLM seeding requirements as allowed by the BLM/OCD MOU.

14. BR shall seed the disturbed areas the first growing season after the operator closes the pit. Seeding will be accomplished via drilling on the contour whenever practical or by other division-approved methods. BLM or Forest Service stipulated seed mixes will be used on federal lands. Vegetative cover will equal 70% of the native perennial vegetative cover (un-impacted) consisting of at least three native plant species, including at least one grass, but not including noxious weeds, and maintain that cover through two successive growing seasons. Repeat seeding or planting will be continued until successful vegetative growth occurs.

Provision 14 was accomplished through complying with BLM seeding requirements as allowed by the BLM/OCD MOU.

15. The temporary pit will be located with a steel marker, no less than four inches in diameter, cemented in a hole three feet deep in the center of the onsite burial upon the abandonment of all the wells on the pad. The marker will be flush with the ground to allow access of the active well pad and for safety concerns. The marker will include a threaded collar to be used for future abandonment. The top of the marker will contain a welded steel 12" square plate that indicates the onsite burial of the temporary pit. The plate will be easily removable and a four foot tall riser will be threaded into the top of the collar marker and welded around the base with the operator's information at the time of all wells on the pad are abandoned. The operator's information will include the following: Operator Name, Lease Name, Well Name and number, Unit Number, Section, Township, Range and an indicator that the marker is an onsite burial location.

Provision 15 was accomplished by installing a steel marker in the temporary pit, no less than four inches in diameter, cemented in a hole three feet deep in the center of the onsite burial. The marker is flush with the ground to allow access of the active well pad and for safety concerns. The top of the marker contains a welded steel 12" square plate that indicates the onsite burial of the temporary pit. The plate contains the following: Operator Name, Lease Name, Well Name and number, Unit Number, Section, Township, Range and an indicator that the marker is an onsite burial location.

The plate will be easily removable and a four foot tall riser will be threaded into the top of the collar marker and welded around the base with the following operator's information at the time of all wells on the pad are abandoned. The riser will be labeled: BR, BLM, SAN JUAN 28-6 UNIT 143P, UL-K, Sec. 20, T 28N, R 6W, API # 30-039-30805

Jaramillo, Marie E

From: Jaramillo, Marie E
Sent: Wednesday, August 12, 2009 10:34 AM
To: 'mark_kelly@nm.blm.gov'
Subject: SURFACE OWNER NOTIFICATION 08/12/09

The following wells will have a temporary pit that will be closed on-site. Please let me know if you have any questions. Thanks

SAN JUAN 28-6 UNIT 143P
SAN JUAN 30-6 UNIT 58C
SAN JUAN 30-6 UNIT 58M

Marie Jaramillo
Staff Regulatory Tech.
ConocoPhillips
Office # (505) 326-9865
Fax # (505) 599-4062
<mailto:marie.e.jaramillo@conocophillips.com>

DISTRICT I
1625 N. French Dr., Hobbs, N.M. 88240

State of New Mexico
Energy, Minerals & Natural Resources Department

Form C-102
Revised October 12, 2005

DISTRICT II
1301 W. Grand Avenue, Artesia, N.M. 88210

Submit to Appropriate District Office
State Lease - 4 Copies
Fee Lease - 3 Copies

DISTRICT III
1000 Rio Brazos Rd., Aztec, N.M. 87410

OIL CONSERVATION DIVISION
1220 South St. Francis Dr.
Santa Fe, NM 87505

☐ AMENDED REPORT

DISTRICT IV
1220 S. St. Francis Dr., Santa Fe, NM 87505

WELL LOCATION AND ACREAGE DEDICATION PLAT

| | | | | | |
|-----------------|--|--|--|--|------------------------|
| 1 API Number | | 2 Pool Code | | 3 Pool Name BASIN DAKOTA/BLANCO MESAVERDE | |
| 4 Property Code | | 5 Property Name SAN JUAN 28-6 UNIT | | | 6 Well Number 143 P |
| 7 GRID No. | | 8 Operator Name BURLINGTON RESOURCES OIL & GAS COMPANY LP | | | 9 Elevation 6579' |

10 Surface Location

| UL or lot no. | Section | Township | Range | Lot Idn | Feet from the | North/South line | Feet from the | East/West line | County |
|---------------|---------|----------|-------|---------|---------------|------------------|---------------|----------------|------------|
| K | 20 | 28N | 6W | | 1473' | SOUTH | 1570' | WEST | RIO ARRIBA |

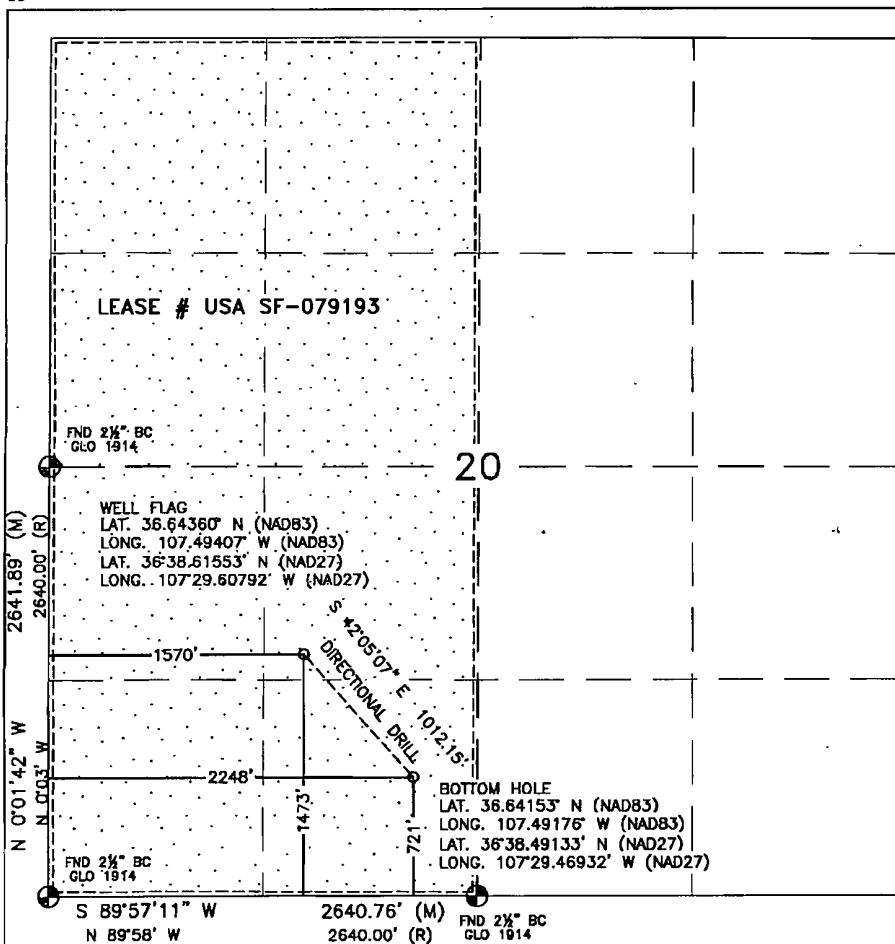
11 Bottom Hole Location If Different From Surface

| UL or lot no. | Section | Township | Range | Lot Idn | Feet from the | North/South line | Feet from the | East/West line | County |
|---------------|---------|----------|-------|---------|---------------|------------------|---------------|----------------|------------|
| N | 20 | 28N | 6W | | 721' | SOUTH | 2248' | WEST | RIO ARRIBA |

| | | | | | | | |
|---|--|--------------------|--|-----------------------|--|--------------|--|
| 12 Dedicated Acres 320.0 Acres - (W/2) | | 13 Joint or Infill | | 14 Consolidation Code | | 15 Order No. | |
|---|--|--------------------|--|-----------------------|--|--------------|--|

NO ALLOWABLE WILL BE ASSIGNED TO THIS COMPLETION UNTIL ALL INTERESTS HAVE BEEN CONSOLIDATED
OR A NON-STANDARD UNIT HAS BEEN APPROVED BY THE DIVISION

16



17 OPERATOR CERTIFICATION

I hereby certify that the information contained herein is true and complete to the best of my knowledge and belief, and that this organization either owns a working interest or released mineral interest in the land including the proposed bottom hole location or has a right to drill this well at this location pursuant to a contract with an owner or a compulsory pooling order heretofore entered by the division.

Signature

Date

Printed Name

18 SURVEYOR CERTIFICATION

I hereby certify that the well location shown on this plat was plotted from field notes of actual surveys made by me or under my supervision, and that the same is true and correct to the best of my belief.

FEBRUARY 12, 2009

Date of Survey

Signature and Seal of Professional Surveyor:

David R. Russell



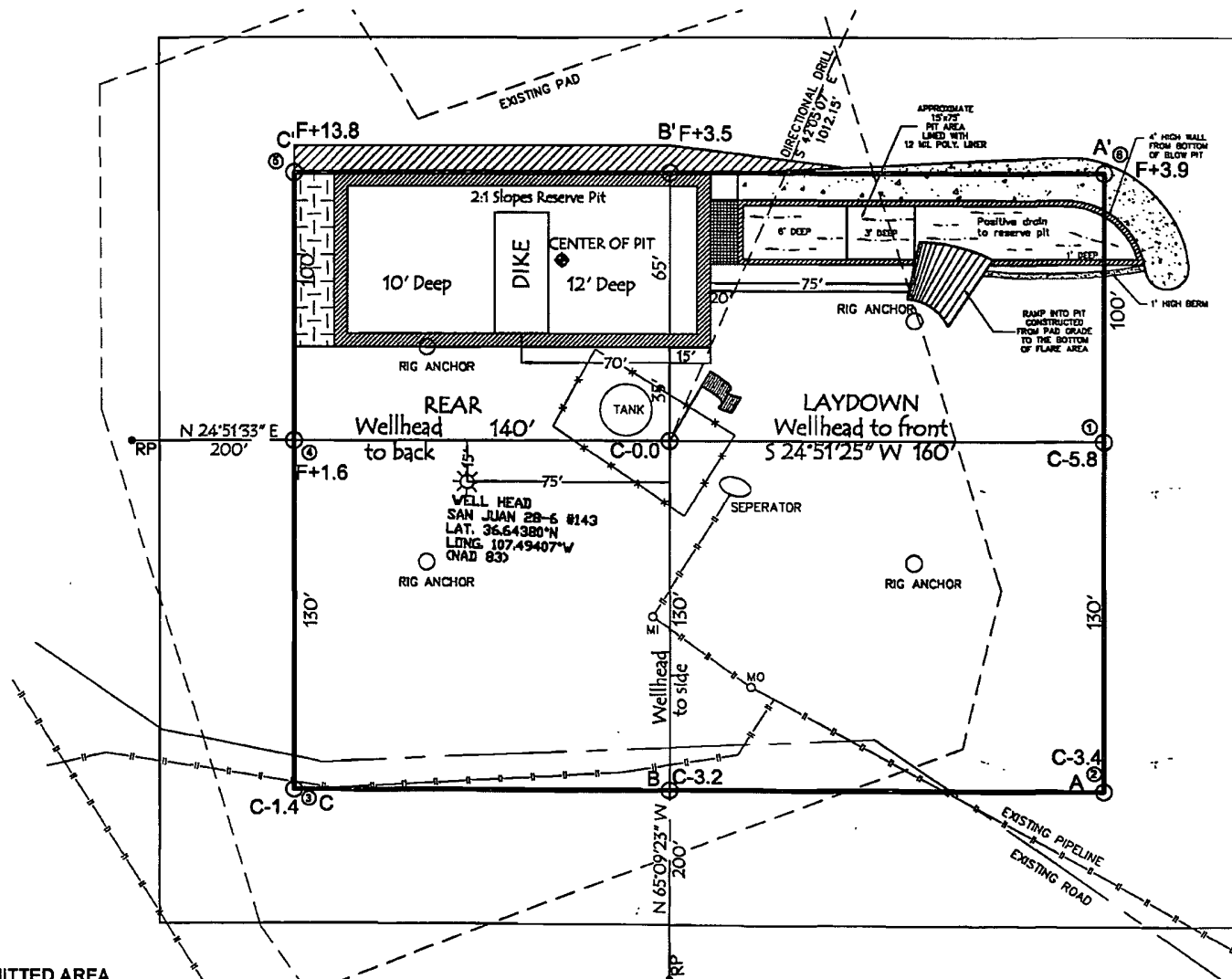
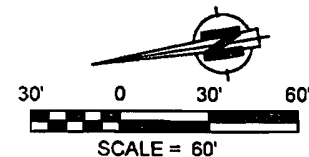
DAVID RUSSELL

Certificate Number 10201

WELL FLAG
 LATITUDE: 36.64360°N
 LONGITUDE: 107.49407°W
CENTER OF PIT
 LATITUDE: 36.64364°N
 LONGITUDE: 107.49378°W
 ELEVATION: 6567.1'
 DATUM: NAD83 & NAVD88

BURLINGTON RESOURCES OIL & GAS COMPANY LP

SAN JUAN 28-6 UNIT #143 P
 1473' FSL & 1570' FWL
 LOCATED IN THE NE/4 SW/4 OF SECTION 20,
 T28N, R6W, N.M.P.M.,
 RIO ARRIBA COUNTY, NEW MEXICO
 GROUND ELEVATION: 6579', NAVD 88
 FINISHED PAD ELEVATION: 6579.1', NAVD 88



TOTAL PERMITTED AREA
 330' x 400' = 3.03 ACRES
 SCALE: 1" = 60'
 JOB No.: COPC162_REV1
 DATE: 02/16/09
 DRAWN BY: TWT

NOTE:
 RESERVE PIT DIKE: TO BE 8' ABOVE DEEP SIDE (OVERFLOW - 3' WIDE AND 1' ABOVE SHALLOW SIDE).
 RUSSELL SURVEYING, INC. IS NOT LIABLE FOR UNDERGROUND UTILITIES OR PIPELINES.
 CONTRACTOR SHOULD CALL ONE-CALL FOR LOCATION OF ANY MARKED OR UNMARKED, BURIED PIPELINES OR
 CABLES ON WELL PAD, IN CONSTRUCTION ZONE AND/OR ACCESS ROAD AT LEAST TWO (2) WORKING DAYS PRIOR
 TO CONSTRUCTION.



Russell Surveying
 1409 W. Aztec Blvd. #2
 Aztec, New Mexico 87410
 (505) 334-8637



**EPA METHOD 8015 Modified
Nonhalogenated Volatile Organics
Total Petroleum Hydrocarbons**

Client: ConocoPhillips
Sample ID: Reserve Pit
Laboratory Number: 55462
Chain of Custody No: 9319
Sample Matrix: Soil
Preservative: Cool
Condition: Intact

Project #: 96052-1706
Date Reported: 08-09-10
Date Sampled: 08-05-10
Date Received: 08-05-10
Date Extracted: 08-06-10
Date Analyzed: 08-09-10
Analysis Requested: 8015 TPH

| Parameter | Concentration (mg/Kg) | Det. Limit (mg/Kg) |
|------------------------------|--------------------------|--------------------------|
| Gasoline Range (C5 - C10) | 0.4 | 0.2 |
| Diesel Range (C10 - C28) | 5.5 | 0.1 |
| Total Petroleum Hydrocarbons | 5.9 | 0.2 |

ND - Parameter not detected at the stated detection limit.

References: Method 8015B, Nonhalogenated Volatile Organics, Test Methods for Evaluating Solid Waste, SW-846, USEPA, December 1996.

Comments: **San Juan 28-6 143P**

Analyst

Review



**EPA METHOD 8015 Modified
Nonhalogenated Volatile Organics
Total Petroleum Hydrocarbons**

| | | | |
|----------------------|----------------|---------------------|------------|
| Client: | ConocoPhillips | Project #: | 96052-1706 |
| Sample ID: | Background | Date Reported: | 08-09-10 |
| Laboratory Number: | 55463 | Date Sampled: | 08-05-10 |
| Chain of Custody No: | 9319 | Date Received: | 08-05-10 |
| Sample Matrix: | Soil | Date Extracted: | 08-06-10 |
| Preservative: | Cool | Date Analyzed: | 08-09-10 |
| Condition: | Intact | Analysis Requested: | 8015 TPH |

| Parameter | Concentration (mg/Kg) | Det. Limit (mg/Kg) |
|------------------------------|--------------------------|--------------------------|
| Gasoline Range (C5 - C10) | ND | 0.2 |
| Diesel Range (C10 - C28) | ND | 0.1 |
| Total Petroleum Hydrocarbons | ND | 0.2 |

ND - Parameter not detected at the stated detection limit.

References: Method 8015B, Nonhalogenated Volatile Organics, Test Methods for Evaluating Solid Waste, SW-846, USEPA, December 1996.

Comments: **San Juan 28-6 143P**


Analyst


Review



EPA Method 8015 Modified
Nonhalogenated Volatile Organics
Total Petroleum Hydrocarbons

Quality Assurance Report

| | | | |
|--------------------|--------------------|---------------------|----------|
| Client: | QA/QC | Project #: | N/A |
| Sample ID: | 08-09-10 QA/QC | Date Reported: | 08-09-10 |
| Laboratory Number: | 55463 | Date Sampled: | N/A |
| Sample Matrix: | Methylene Chloride | Date Received: | N/A |
| Preservative: | N/A | Date Analyzed: | 08-09-10 |
| Condition: | N/A | Analysis Requested: | TPH |

| | I-Cal Date | I-Cal RF | C-Cal RF | % Difference | Accept Range |
|-------------------------|------------|-------------|-------------|--------------|--------------|
| Gasoline Range C5 - C10 | 08-09-10 | 9.9960E+002 | 1.0000E+003 | 0.04% | 0 - 15% |
| Diesel Range C10 - C28 | 08-09-10 | 9.9960E+002 | 1.0000E+003 | 0.04% | 0 - 15% |

| Blank Conc. (mg/L - mg/Kg) | Concentration | Detection Limit |
|------------------------------|---------------|-----------------|
| Gasoline Range C5 - C10 | ND | 0.2 |
| Diesel Range C10 - C28 | ND | 0.1 |
| Total Petroleum Hydrocarbons | ND | 0.2 |

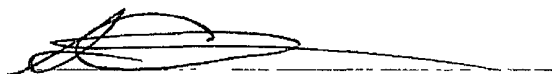
| Duplicate Conc. (mg/Kg) | Sample | Duplicate | % Difference | Accept Range |
|-------------------------|--------|-----------|--------------|--------------|
| Gasoline Range C5 - C10 | ND | ND | 0.0% | 0 - 30% |
| Diesel Range C10 - C28 | ND | ND | 0.0% | 0 - 30% |


| Spike Conc. (mg/Kg) | Sample | Spike Added | Spike Result | % Recovery | Accept Range |
|-------------------------|--------|-------------|--------------|------------|--------------|
| Gasoline Range C5 - C10 | ND | 250 | 252 | 101% | 75 - 125% |
| Diesel Range C10 - C28 | ND | 250 | 254 | 102% | 75 - 125% |

ND - Parameter not detected at the stated detection limit.

References: Method 8015B, Nonhalogenated Volatile Organics, Test Methods for Evaluating Solid Waste, SW-846, USEPA, December 1996.

Comments: QA/QC for Samples 55458-55467


Analyst


Review



EPA METHOD 8021
AROMATIC VOLATILE ORGANICS

| | | | |
|--------------------|----------------|---------------------|------------|
| Client: | ConocoPhillips | Project #: | 96052-1706 |
| Sample ID: | Reserve Pit | Date Reported: | 08-09-10 |
| Laboratory Number: | 55462 | Date Sampled: | 08-05-10 |
| Chain of Custody: | 9319 | Date Received: | 08-05-10 |
| Sample Matrix: | Soil | Date Analyzed: | 08-09-10 |
| Preservative: | Cool | Date Extracted: | 08-06-10 |
| Condition: | Intact | Analysis Requested: | BTEX |

| Parameter | Concentration (ug/Kg) | Det. Limit (ug/Kg) |
|--------------|--------------------------|--------------------------|
| Benzene | 5.8 | 0.9 |
| Toluene | 4.2 | 1.0 |
| Ethylbenzene | 6.6 | 1.0 |
| p,m-Xylene | 103 | 1.2 |
| o-Xylene | 3.7 | 0.9 |
| Total BTEX | 123 | |

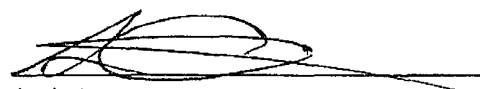
ND - Parameter not detected at the stated detection limit.

| | | |
|-----------------------|---------------------|------------------|
| Surrogate Recoveries: | Parameter | Percent Recovery |
| | Fluorobenzene | 102 % |
| | 1,4-difluorobenzene | 100 % |
| | Bromochlorobenzene | 100 % |

References: Method 5030B, Purge-and-Trap, Test Methods for Evaluating Solid Waste, SW-846, USEPA, December 1996.

Method 8021B, Aromatic Volatile Organics, Test Methods for Evaluating Solid Waste, SW-846, USEPA, December 1996.

Comments: San Juan 28-6 143P


Analyst


Review



EPA METHOD 8021
AROMATIC VOLATILE ORGANICS

| | | | |
|--------------------|----------------|---------------------|------------|
| Client: | ConocoPhillips | Project #: | 96052-1706 |
| Sample ID: | Background | Date Reported: | 08-09-10 |
| Laboratory Number: | 55463 | Date Sampled: | 08-05-10 |
| Chain of Custody: | 9319 | Date Received: | 08-05-10 |
| Sample Matrix: | Soil | Date Analyzed: | 08-09-10 |
| Preservative: | Cool | Date Extracted: | 08-06-10 |
| Condition: | Intact | Analysis Requested: | BTEX |

| Parameter | Concentration (ug/Kg) | Det. Limit (ug/Kg) |
|--------------|--------------------------|--------------------------|
| Benzene | ND | 0.9 |
| Toluene | ND | 1.0 |
| Ethylbenzene | ND | 1.0 |
| p,m-Xylene | 2.0 | 1.2 |
| o-Xylene | 1.3 | 0.9 |
| Total BTEX | 3.3 | |


ND - Parameter not detected at the stated detection limit.

| Surrogate Recoveries: | Parameter | Percent Recovery |
|-----------------------|---------------------|------------------|
| | Fluorobenzene | 95.6 % |
| | 1,4-difluorobenzene | 98.5 % |
| | Bromochlorobenzene | 102 % |

References: Method 5030B, Purge-and-Trap, Test Methods for Evaluating Solid Waste, SW-846, USEPA, December 1996.

Method 8021B, Aromatic Volatile Organics, Test Methods for Evaluating Solid Waste, SW-846, USEPA, December 1996.

Comments: San Juan 28-6 143P


Analyst


Review



EPA METHOD 8021
AROMATIC VOLATILE ORGANICS

Client: N/A
Sample ID: 0809BBLK QA/QC
Laboratory Number: 55463
Sample Matrix: Soil
Preservative: N/A
Condition: N/A

Project #: N/A
Date Reported: 08-09-10
Date Sampled: N/A
Date Received: N/A
Date Analyzed: 08-09-10
Analysis: BTEX

| Calibration and Detection Limits (ug/L) | I-Cal RF: | C-Cal RF: | %Diff. Accept. Range 0 - 15% | Blank Conc | Detect. Limit |
|--|-------------|-------------|---------------------------------|---------------|------------------|
| Benzene | 8.6898E+005 | 8.7073E+005 | 0.2% | ND | 0.1 |
| Toluene | 9.5667E+005 | 9.5859E+005 | 0.2% | ND | 0.1 |
| Ethylbenzene | 8.6003E+005 | 8.6176E+005 | 0.2% | ND | 0.1 |
| p,m-Xylene | 2.1139E+006 | 2.1181E+006 | 0.2% | ND | 0.1 |
| o-Xylene | 7.6407E+005 | 7.6561E+005 | 0.2% | ND | 0.1 |

| Duplicate Conc. (ug/Kg) | Sample | Duplicate | %Diff. | Accept Range | Detect. Limit |
|-------------------------|--------|-----------|--------|--------------|---------------|
| Benzene | ND | ND | 0.0% | 0 - 30% | 0.9 |
| Toluene | ND | ND | 0.0% | 0 - 30% | 1.0 |
| Ethylbenzene | ND | ND | 0.0% | 0 - 30% | 1.0 |
| p,m-Xylene | 2.0 | 2.0 | 0.0% | 0 - 30% | 1.2 |
| o-Xylene | 1.3 | 1.4 | 7.7% | 0 - 30% | 0.9 |

| Spike Conc. (ug/Kg) | Sample | Amount Spiked | Spiked Sample | % Recovery | Accept Range |
|---------------------|--------|---------------|---------------|------------|--------------|
| Benzene | ND | 50.0 | 49.8 | 99.5% | 39 - 150 |
| Toluene | ND | 50.0 | 50.3 | 101% | 46 - 148 |
| Ethylbenzene | ND | 50.0 | 49.7 | 99.4% | 32 - 160 |
| p,m-Xylene | 2.0 | 100 | 101 | 100% | 46 - 148 |
| o-Xylene | 1.3 | 50.0 | 50.2 | 100% | 46 - 148 |

ND - Parameter not detected at the stated detection limit.

References: Method 5030B, Purge-and-Trap, Test Methods for Evaluating Solid Waste, SW-846, USEPA, December 1996
Method 8021B, Aromatic and Halogenated Volatiles by Gas Chromatography Using Photoionization and/or Electrolytic Conductivity Detectors, SW-846, USEPA December 1996.

Comments: QA/QC for Samples 55458-55467

Analyst

Review



EPA METHOD 418.1
TOTAL PETROLEUM
HYDROCARBONS

| | | | |
|----------------------|----------------|------------------|------------|
| Client: | ConocoPhillips | Project #: | 96052-1706 |
| Sample ID: | Reserve Pit | Date Reported: | 08-09-10 |
| Laboratory Number: | 55462 | Date Sampled: | 08-05-10 |
| Chain of Custody No: | 9319 | Date Received: | 08-05-10 |
| Sample Matrix: | Soil | Date Extracted: | 08-06-10 |
| Preservative: | Cool | Date Analyzed: | 08-06-10 |
| Condition: | Intact | Analysis Needed: | TPH-418.1 |

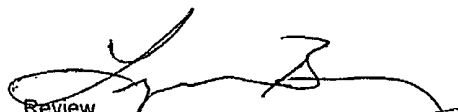
| Parameter | Concentration (mg/kg) | Det. Limit (mg/kg) |
|------------------------------|--------------------------|--------------------------|
| Total Petroleum Hydrocarbons | 2,270 | 6.0 |

ND = Parameter not detected at the stated detection limit.

References: Method 418.1, Petroleum Hydrocarbons, Total Recoverable, Chemical Analysis of Water and Waste, USEPA Storet No. 4551, 1978.

Comments: San Juan 28-6 143P


Analyst


Review



EPA METHOD 418.1
TOTAL PETROLEUM
HYDROCARBONS


| | | | |
|----------------------|----------------|------------------|------------|
| Client: | ConocoPhillips | Project #: | 96052-1706 |
| Sample ID: | Background | Date Reported: | 08-09-10 |
| Laboratory Number: | 55463 | Date Sampled: | 08-05-10 |
| Chain of Custody No: | 9319 | Date Received: | 08-05-10 |
| Sample Matrix: | Soil | Date Extracted: | 08-06-10 |
| Preservative: | Cool | Date Analyzed: | 08-06-10 |
| Condition: | Intact | Analysis Needed: | TPH-418.1 |


| Parameter | Concentration (mg/kg) | Det. Limit (mg/kg) |
|------------------------------|--------------------------|--------------------------|
| Total Petroleum Hydrocarbons | 17.9 | 6.0 |

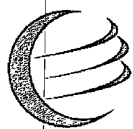
ND = Parameter not detected at the stated detection limit.

References: Method 418.1, Petroleum Hydrocarbons, Total Recoverable, Chemical Analysis of Water and Waste, USEPA Storet No. 4551, 1978.

Comments: San Juan 28-6 143P


Analyst


Review



envirotech
Analytical Laboratory

**EPA METHOD 418.1
TOTAL PETROLEUM
HYDROCARBONS
QUALITY ASSURANCE REPORT**

| | | | |
|--------------------|-----------------------|------------------|----------|
| Client: | QA/QC | Project #: | N/A |
| Sample ID: | QA/QC | Date Reported: | 08-06-10 |
| Laboratory Number: | 08-06-TPH.QA/QC 55433 | Date Sampled: | N/A |
| Sample Matrix: | Freon-113 | Date Analyzed: | 08-06-10 |
| Preservative: | N/A | Date Extracted: | 08-06-10 |
| Condition: | N/A | Analysis Needed: | TPH |

| | | | | | | |
|--------------------|-------------------|-------------------|------------------|------------------|---------------------|----------------------|
| Calibration | I-Cal Date | C-Cal Date | I-Cal RF: | C-Cal RF: | % Difference | Accept. Range |
| | 07-29-10 | 08-06-10 | 1,860 | 1,770 | 4.8% | +/- 10% |

Blank Conc. (mg/Kg)
TPH

Concentration
ND

Detection Limit
6.0

Duplicate Conc. (mg/Kg)
TPH

Sample
11.9

Duplicate
10.4

% Difference
12.6%

Accept. Range
+/- 30%

Spike Conc. (mg/Kg)
TPH

Sample
11.9

Spike Added
2,000

Spike Result
2,080

% Recovery
103%

Accept Range
80 - 120%

ND = Parameter not detected at the stated detection limit.

References: Method 418.1, Petroleum Hydrocarbons, Total Recoverable, Chemical Analysis of Water and Waste, USEPA Storet No. 4551, 1978.

Comments: QA/QC for Samples 55433, 55457, 55462-55467


Analyst


Review



Chloride

Client: ConocoPhillips
Sample ID: Reserve Pit
Lab ID#: 55462
Sample Matrix: Soil
Preservative: Cool
Condition: Intact

Project #: 96052-1706
Date Reported: 08-09-10
Date Sampled: 08-05-10
Date Received: 08-05-10
Date Analyzed: 08-09-10
Chain of Custody: 9319

Parameter

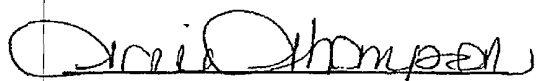
Concentration (mg/Kg)


Total Chloride

235

Reference: U.S.E.P.A., 4500B, "Methods for Chemical Analysis of Water and Wastes", 1983.
Standard Methods For The Examination of Water And Waste Water", 18th ed., 1992.

Comments: **San Juan 28-6 143P**


Analyst


Review




Chloride

| | | | |
|----------------|----------------|-------------------|------------|
| Client: | ConocoPhillips | Project #: | 96052-1706 |
| Sample ID: | Background | Date Reported: | 08-09-10 |
| Lab ID#: | 55463 | Date Sampled: | 08-05-10 |
| Sample Matrix: | Soil | Date Received: | 08-05-10 |
| Preservative: | Cool | Date Analyzed: | 08-09-10 |
| Condition: | Intact | Chain of Custody: | 9319 |

| Parameter | Concentration (mg/Kg) |
|----------------|-----------------------|
| Total Chloride | 30 |

Reference: U.S.E.P.A., 4500B, "Methods for Chemical Analysis of Water and Wastes", 1983.
Standard Methods For The Examination of Water And Waste Water", 18th ed., 1992.

Comments: San Juan 28-6 143P


Analyst


Review

| | | | | | | | | | | |
|--|---|--|-----------------------------------|---------------------------------------|--------------|--|--|-------------------------------|-----------------------|---------------|
| Submit To Appropriate District Office Two Copies District I 1625 N French Dr, Hobbs, NM 88240 District II 1301 W Grand Avenue, Artesia, NM 88210 District III 1000 Rio Brazos Rd, Aztec, NM 87410 District IV 1220 S St Francis Dr, Santa Fe, NM 87505 | State of New Mexico Energy, Minerals and Natural Resources Oil Conservation Division 1220 South St. Francis Dr. Santa Fe, NM 87505 | Form C-105 July 17, 2008 1. WELL API NO. 30-039-30805 2. Type of Lease <input type="checkbox"/> STATE <input type="checkbox"/> FEE <input checked="" type="checkbox"/> FED/INDIAN 3. State Oil & Gas Lease No. SF-079193 | | | | | | | | |
| WELL COMPLETION OR RECOMPLETION REPORT AND LOG | | | | | | | | | | |
| 4 Reason for filing: <input type="checkbox"/> COMPLETION REPORT (Fill in boxes #1 through #31 for State and Fee wells only) <input checked="" type="checkbox"/> C-144 CLOSURE ATTACHMENT (Fill in boxes #1 through #9, #15 Date Rig Released and #32 and/or #33, attach this and the plat to the C-144 closure report in accordance with 19 15 17 13.K NMAC) | | 5 Lease Name or Unit Agreement Name SAN JUAN 28-6 UNIT 6 Well Number. 143P | | | | | | | | |
| 7 Type of Completion: <input checked="" type="checkbox"/> NEW WELL <input type="checkbox"/> WORKOVER <input type="checkbox"/> DEEPENING <input type="checkbox"/> PLUGBACK <input type="checkbox"/> DIFFERENT RESERVOIR <input type="checkbox"/> OTHER | | | | | | | | | | |
| 8. Name of Operator Burlington Resources Oil Gas Company, LP | | 9. OGRID 14538 | | | | | | | | |
| 10. Address of Operator PO Box 4298, Farmington, NM 87499 | | 11 Pool name or Wildcat | | | | | | | | |
| 12. Location | Unit Ltr | Section | Township | Range | Lot | Feet from the | N/S Line | Feet from the | E/W Line | County |
| Surface: | | | | | | | | | | |
| BH: | | | | | | | | | | |
| 13. Date Spudded | 14. Date T.D Reached | 15. Date Rig Released 4/20/2010 | | 16. Date Completed (Ready to Produce) | | | 17 Elevations (DF and RKB, RT, GR, etc) | | | |
| 18. Total Measured Depth of Well | | 19. Plug Back Measured Depth | | 20. Was Directional Survey Made? | | | 21 Type Electric and Other Logs Run | | | |
| 22 Producing Interval(s), of this completion - Top, Bottom, Name | | | | | | | | | | |
| 23. CASING RECORD (Report all strings set in well) | | | | | | | | | | |
| CASING SIZE | | WEIGHT LB./FT. | | DEPTH SET | | HOLE SIZE | | CEMENTING RECORD | | AMOUNT PULLED |
| | | | | | | | | | | |
| | | | | | | | | | | |
| | | | | | | | | | | |
| | | | | | | | | | | |
| | | | | | | | | | | |
| 24. LINER RECORD | | | | | | 25. TUBING RECORD | | | | |
| SIZE | TOP | BOTTOM | SACKS CEMENT | SCREEN | SIZE | DEPTH SET | PACKER SET | | | |
| | | | | | | | | | | |
| | | | | | | | | | | |
| | | | | | | | | | | |
| 26. Perforation record (interval, size, and number) | | | | | | 27 ACID, SHOT, FRACTURE, CEMENT, SQUEEZE, ETC. | | | | |
| | | | | | | DEPTH INTERVAL | | AMOUNT AND KIND MATERIAL USED | | |
| | | | | | | | | | | |
| | | | | | | | | | | |
| 28. PRODUCTION | | | | | | | | | | |
| Date First Production | | Production Method (Flowing, gas lift, pumping - Size and type pump) | | | | | Well Status (Prod. or Shut-in) | | | |
| Date of Test | Hours Tested | Choke Size | Prod'n For Test Period | Oil - Bbl | Gas - MCF | Water - Bbl. | Gas - Oil Ratio | | | |
| Flow Tubing Press | Casing Pressure | Calculated 24-Hour Rate | Oil - Bbl. | Gas - MCF | Water - Bbl. | Oil Gravity - API - (Corr.) | | | | |
| 29 Disposition of Gas (Sold, used for fuel, vented, etc) | | | | | | | | | 30. Test Witnessed By | |
| 31 List Attachments | | | | | | | | | | |
| 32 If a temporary pit was used at the well, attach a plat with the location of the temporary pit | | | | | | | | | | |
| 33. If an on-site burial was used at the well, report the exact location of the on-site burial: | | | | | | | | | | |
| Latitude 36.64364°N Longitude 107.49378°W NAD <input type="checkbox"/> 1927 <input checked="" type="checkbox"/> 1983 | | | | | | | | | | |
| I hereby certify that the information shown on both sides of this form is true and complete to the best of my knowledge and belief | | | | | | | | | | |
| Signature <i>Jamie Goodwin</i> | | | Printed Name Jamie Goodwin | | | Title: Regulatory Tech. | | Date: 4/5/2011 | | |
| E-mail Address Jamie.L.Goodwin@conocophillips.com | | | | | | | | | | |

ConocoPhillips

Pit Closure Form:

Date: 9/22/2010

Well Name: SJ 28-6 143P

Footages: 1473 FSL 1570 FWL Unit Letter: K

Section: 20, T28-N, R6-W, County: R.A. State: NM

Contractor Closing Pit: Ritter

Construction Inspector: N Faver Date: 9/22/2010

Inspector Signature: 

Goodwin, Jamie L

From: Tally, Ethel
Sent: Thursday, September 16, 2010 2:03 PM
To: GRP:SJBU Regulatory; Blair, Maxwell O; Blakley, Mac; Clark, Joni E; Farrell, Juanita R; Gillette, Steven L (Gray Surface Specialties and Consulting, Ltd.); Greer, David A; Hines, Derek J (Finney Land Co.); Maxwell, Mary Alice; McWilliams, Peggy L; Seabolt, Elmo F; Stallsmith, Mark R; Mark Kelly; Robert Switzer; Sherrie Landon; Bassing, Kendal R.; Berenz (mxberenz@yahoo.com); Faver Norman; Fred Martinez; Jared Chavez; Lowe, Terry; Spearman, Bobby E; 'Steve McGlasson'; Becker, Joey W; Bowker, Terry D; Gordon Chenault; GRP:SJBU Production Leads; Hockett, Christy R; Bassing, Kendal R.; Kennedy, Jim R; Lopez, Richard A; O'Nan, Mike J.; Peace, James T; Pierce, Richard M; Poulson, Mark E; Smith, Randall O; Spearman, Bobby E; Stamets, Steve A; Thacker, LARRY; Work, Jim A; Payne, Wendy F
Cc: 'JDRITT@aol.com'
Subject: RECLAMATION NOTICE: SAN JUAN 28-6 UNIT 143P
Attachments: San Juan 28-6 Unit 143P.pdf

JD Ritter will move a tractor to the **San Juan 28-6 Unit 143P** to start the reclamation process on Tuesday, September 21, 2010. Please contact Norm Faver @ 320-0670 if you have any questions.



San Juan 28-6 Unit
143P.pdf (1...

Burlington Resources Well

SAN JUAN 28-6 UNIT 143P - BLM surface / BLM minerals

Network #: 10245510 Activity Code D250 (Reclamation)

Rio Arriba County, NM

Twin: San Juan 28-6 Unit 143 (existing)

1473' FSL, 1570' FWL

SEC.20, T28N, R06W

Unit Letter 'K'

Lease #: SF-079193

Latitude: 36° 38 min 36.96000 sec N (NAD 83)

Longitude: 107° 29 min 38.65200 sec W (NAD83)

Total Acres Disturbed: 3.03 acres

API #: 30-039-30805

Ethel Tally

Project Technician
ConocoPhillips-SJBU
3401 E. 30th
Farmington NM 87402
(505)599-4027
Ethel.Tally@ConocoPhillips.com



Reclamation Form:

Date: 1/19/2011

Well Name: SJ 28-6 143P

Footages: 1473 FSH, 1570 FWL Unit Letter: K

Section: 20, T-28-N, R-6-W, County: RA State: NM

Reclamation Contractor: Ritter

Reclamation Date: Sept 30th

Road Completion Date: Sept 30th

Seeding Date: Oct. 12th

****PIT MARKER STATUS (When Required): Picture of Marker set needed**

MARKER PLACED : Oct 21 (DATE)

LATITUDE: 36 38.608

LONGITUDE: 107 29.632

Pit Manifold removed Yes (DATE)

Construction Inspector: Norman Faver Date: 1/19/2011

Inspector Signature: Norman Faver

Office Use Only:
Subtask _____
DSM _____
Folder _____
Pictures _____
Revised 11/4/10

Oct 18th Location Fenced





| WELL NAME: San Juan 28-6 Unit 143P | | OPEN PIT INSPECTION FORM | | | | | | | | ConocoPhillips | |
|---|---|---|---|--|--|--|--|--|--|--|--|
| INSPECTOR DATE | | | | Elmer Perry 04/21/10 | Elmer Perry 05/03/10 | Elmer Perry 05/10/10 | Elmer Perry 05/14/10 | Elmer Perry 05/26/10 | Elmer Perry 06/01/10 | Elmer Perry 06/09/10 | |
| *Please request for pit extension after 26 weeks | | Week 1 | Week 2 | Week 3 | Week 4 | Week 5 | Week 6 | Week 7 | Week 8 | Week 9 | |
| PIT STATUS | | <input type="checkbox"/> Drilled <input type="checkbox"/> Completed <input type="checkbox"/> Clean-Up | <input type="checkbox"/> Drilled <input type="checkbox"/> Completed <input type="checkbox"/> Clean-Up | <input checked="" type="checkbox"/> Drilled <input type="checkbox"/> Completed <input type="checkbox"/> Clean-Up | <input checked="" type="checkbox"/> Drilled <input type="checkbox"/> Completed <input type="checkbox"/> Clean-Up | <input checked="" type="checkbox"/> Drilled <input type="checkbox"/> Completed <input type="checkbox"/> Clean-Up | <input checked="" type="checkbox"/> Drilled <input type="checkbox"/> Completed <input type="checkbox"/> Clean-Up | <input checked="" type="checkbox"/> Drilled <input type="checkbox"/> Completed <input type="checkbox"/> Clean-Up | <input checked="" type="checkbox"/> Drilled <input type="checkbox"/> Completed <input type="checkbox"/> Clean-Up | <input checked="" type="checkbox"/> Drilled <input type="checkbox"/> Completed <input type="checkbox"/> Clean-Up | |
| LOCATION | Is the location marked with the proper flagging? (Const. Zone, poles, pipelines, etc.) | <input type="checkbox"/> Yes <input type="checkbox"/> No | <input type="checkbox"/> Yes <input type="checkbox"/> No | <input checked="" type="checkbox"/> Yes <input type="checkbox"/> No | <input checked="" type="checkbox"/> Yes <input type="checkbox"/> No | <input checked="" type="checkbox"/> Yes <input type="checkbox"/> No | <input checked="" type="checkbox"/> Yes <input type="checkbox"/> No | <input checked="" type="checkbox"/> Yes <input type="checkbox"/> No | <input checked="" type="checkbox"/> Yes <input type="checkbox"/> No | <input checked="" type="checkbox"/> Yes <input type="checkbox"/> No | |
| | Is the temporary well sign on location and visible from access road? | <input type="checkbox"/> Yes <input type="checkbox"/> No | <input type="checkbox"/> Yes <input type="checkbox"/> No | <input checked="" type="checkbox"/> Yes <input type="checkbox"/> No | <input checked="" type="checkbox"/> Yes <input type="checkbox"/> No | <input checked="" type="checkbox"/> Yes <input type="checkbox"/> No | <input checked="" type="checkbox"/> Yes <input type="checkbox"/> No | <input checked="" type="checkbox"/> Yes <input type="checkbox"/> No | <input checked="" type="checkbox"/> Yes <input type="checkbox"/> No | <input checked="" type="checkbox"/> Yes <input type="checkbox"/> No | |
| ENVIRONMENTAL COMPLIANCE | Is the access road in good driving condition? (deep ruts, bladed) | <input type="checkbox"/> Yes <input type="checkbox"/> No | <input type="checkbox"/> Yes <input type="checkbox"/> No | <input checked="" type="checkbox"/> Yes <input type="checkbox"/> No | <input checked="" type="checkbox"/> Yes <input type="checkbox"/> No | <input checked="" type="checkbox"/> Yes <input type="checkbox"/> No | <input checked="" type="checkbox"/> Yes <input type="checkbox"/> No | <input checked="" type="checkbox"/> Yes <input type="checkbox"/> No | <input checked="" type="checkbox"/> Yes <input type="checkbox"/> No | <input checked="" type="checkbox"/> Yes <input type="checkbox"/> No | |
| | Are the culverts free from debris or any object preventing flow? | <input type="checkbox"/> Yes <input type="checkbox"/> No | <input type="checkbox"/> Yes <input type="checkbox"/> No | <input checked="" type="checkbox"/> Yes <input type="checkbox"/> No | <input checked="" type="checkbox"/> Yes <input type="checkbox"/> No | <input checked="" type="checkbox"/> Yes <input type="checkbox"/> No | <input checked="" type="checkbox"/> Yes <input type="checkbox"/> No | <input checked="" type="checkbox"/> Yes <input type="checkbox"/> No | <input checked="" type="checkbox"/> Yes <input type="checkbox"/> No | <input checked="" type="checkbox"/> Yes <input type="checkbox"/> No | |
| | Is the top of the location bladed and in good operating condition? | <input type="checkbox"/> Yes <input type="checkbox"/> No | <input type="checkbox"/> Yes <input type="checkbox"/> No | <input type="checkbox"/> Yes <input checked="" type="checkbox"/> No | <input type="checkbox"/> Yes <input checked="" type="checkbox"/> No | <input checked="" type="checkbox"/> Yes <input type="checkbox"/> No | <input checked="" type="checkbox"/> Yes <input type="checkbox"/> No | <input checked="" type="checkbox"/> Yes <input type="checkbox"/> No | <input checked="" type="checkbox"/> Yes <input type="checkbox"/> No | <input type="checkbox"/> Yes <input checked="" type="checkbox"/> No | |
| | Is the fence stock-proof? (fences tight, barbed wire, fence clips in place?) | <input type="checkbox"/> Yes <input type="checkbox"/> No | <input type="checkbox"/> Yes <input type="checkbox"/> No | <input checked="" type="checkbox"/> Yes <input type="checkbox"/> No | <input checked="" type="checkbox"/> Yes <input type="checkbox"/> No | <input checked="" type="checkbox"/> Yes <input type="checkbox"/> No | <input checked="" type="checkbox"/> Yes <input type="checkbox"/> No | <input checked="" type="checkbox"/> Yes <input type="checkbox"/> No | <input checked="" type="checkbox"/> Yes <input type="checkbox"/> No | <input checked="" type="checkbox"/> Yes <input type="checkbox"/> No | |
| | Is the pit liner in good operating condition? (no tears, up-rooting corners, etc.) | <input type="checkbox"/> Yes <input type="checkbox"/> No | <input type="checkbox"/> Yes <input type="checkbox"/> No | <input checked="" type="checkbox"/> Yes <input type="checkbox"/> No | <input checked="" type="checkbox"/> Yes <input type="checkbox"/> No | <input checked="" type="checkbox"/> Yes <input type="checkbox"/> No | <input checked="" type="checkbox"/> Yes <input type="checkbox"/> No | <input checked="" type="checkbox"/> Yes <input type="checkbox"/> No | <input checked="" type="checkbox"/> Yes <input type="checkbox"/> No | <input checked="" type="checkbox"/> Yes <input type="checkbox"/> No | |
| | Is the the location free from trash, oil stains and other materials? (cables, pipe threads, etc.) | <input type="checkbox"/> Yes <input type="checkbox"/> No | <input type="checkbox"/> Yes <input type="checkbox"/> No | <input checked="" type="checkbox"/> Yes <input type="checkbox"/> No | <input checked="" type="checkbox"/> Yes <input type="checkbox"/> No | <input checked="" type="checkbox"/> Yes <input type="checkbox"/> No | <input checked="" type="checkbox"/> Yes <input type="checkbox"/> No | <input checked="" type="checkbox"/> Yes <input type="checkbox"/> No | <input checked="" type="checkbox"/> Yes <input type="checkbox"/> No | <input checked="" type="checkbox"/> Yes <input type="checkbox"/> No | |
| | Does the pit contain two feet of free board? (check the water levels) | <input type="checkbox"/> Yes <input type="checkbox"/> No | <input type="checkbox"/> Yes <input type="checkbox"/> No | <input checked="" type="checkbox"/> Yes <input type="checkbox"/> No | <input checked="" type="checkbox"/> Yes <input type="checkbox"/> No | <input checked="" type="checkbox"/> Yes <input type="checkbox"/> No | <input checked="" type="checkbox"/> Yes <input type="checkbox"/> No | <input checked="" type="checkbox"/> Yes <input type="checkbox"/> No | <input checked="" type="checkbox"/> Yes <input type="checkbox"/> No | <input checked="" type="checkbox"/> Yes <input type="checkbox"/> No | |
| | Is there any standing water on the blow pit? | <input type="checkbox"/> Yes <input type="checkbox"/> No | <input type="checkbox"/> Yes <input type="checkbox"/> No | <input type="checkbox"/> Yes <input checked="" type="checkbox"/> No | <input type="checkbox"/> Yes <input checked="" type="checkbox"/> No | <input type="checkbox"/> Yes <input checked="" type="checkbox"/> No | <input type="checkbox"/> Yes <input checked="" type="checkbox"/> No | <input type="checkbox"/> Yes <input checked="" type="checkbox"/> No | <input type="checkbox"/> Yes <input checked="" type="checkbox"/> No | <input type="checkbox"/> Yes <input checked="" type="checkbox"/> No | |
| | Are the pits free of trash and oil? | <input type="checkbox"/> Yes <input type="checkbox"/> No | <input type="checkbox"/> Yes <input type="checkbox"/> No | <input type="checkbox"/> Yes <input checked="" type="checkbox"/> No | <input type="checkbox"/> Yes <input checked="" type="checkbox"/> No | <input checked="" type="checkbox"/> Yes <input type="checkbox"/> No | <input checked="" type="checkbox"/> Yes <input type="checkbox"/> No | <input checked="" type="checkbox"/> Yes <input type="checkbox"/> No | <input checked="" type="checkbox"/> Yes <input type="checkbox"/> No | <input checked="" type="checkbox"/> Yes <input type="checkbox"/> No | |
| | Are there diversion ditches around the pits for natural drainage? | <input type="checkbox"/> Yes <input type="checkbox"/> No | <input type="checkbox"/> Yes <input type="checkbox"/> No | <input type="checkbox"/> Yes <input checked="" type="checkbox"/> No | <input type="checkbox"/> Yes <input checked="" type="checkbox"/> No | <input type="checkbox"/> Yes <input checked="" type="checkbox"/> No | <input type="checkbox"/> Yes <input checked="" type="checkbox"/> No | <input type="checkbox"/> Yes <input checked="" type="checkbox"/> No | <input type="checkbox"/> Yes <input checked="" type="checkbox"/> No | <input type="checkbox"/> Yes <input checked="" type="checkbox"/> No | |
| Is there a Manifold on location? | <input type="checkbox"/> Yes <input type="checkbox"/> No | <input type="checkbox"/> Yes <input type="checkbox"/> No | <input checked="" type="checkbox"/> Yes <input type="checkbox"/> No | <input checked="" type="checkbox"/> Yes <input type="checkbox"/> No | <input checked="" type="checkbox"/> Yes <input type="checkbox"/> No | <input checked="" type="checkbox"/> Yes <input type="checkbox"/> No | <input checked="" type="checkbox"/> Yes <input type="checkbox"/> No | <input checked="" type="checkbox"/> Yes <input type="checkbox"/> No | <input checked="" type="checkbox"/> Yes <input type="checkbox"/> No | | |
| Is the Manifold free of leaks? Are the hoses in good condition? | <input type="checkbox"/> Yes <input type="checkbox"/> No | <input type="checkbox"/> Yes <input type="checkbox"/> No | <input checked="" type="checkbox"/> Yes <input type="checkbox"/> No | <input checked="" type="checkbox"/> Yes <input type="checkbox"/> No | <input checked="" type="checkbox"/> Yes <input type="checkbox"/> No | <input checked="" type="checkbox"/> Yes <input type="checkbox"/> No | <input checked="" type="checkbox"/> Yes <input type="checkbox"/> No | <input checked="" type="checkbox"/> Yes <input type="checkbox"/> No | <input checked="" type="checkbox"/> Yes <input type="checkbox"/> No | | |
| OC | Was the OCD contacted? | <input type="checkbox"/> Yes <input type="checkbox"/> No | <input type="checkbox"/> Yes <input type="checkbox"/> No | <input type="checkbox"/> Yes <input checked="" type="checkbox"/> No | <input type="checkbox"/> Yes <input checked="" type="checkbox"/> No | <input type="checkbox"/> Yes <input checked="" type="checkbox"/> No | <input type="checkbox"/> Yes <input checked="" type="checkbox"/> No | <input type="checkbox"/> Yes <input checked="" type="checkbox"/> No | <input type="checkbox"/> Yes <input checked="" type="checkbox"/> No | <input type="checkbox"/> Yes <input checked="" type="checkbox"/> No | |
| | PICTURE TAKEN | <input type="checkbox"/> Yes <input type="checkbox"/> No | <input type="checkbox"/> Yes <input type="checkbox"/> No | <input type="checkbox"/> Yes <input checked="" type="checkbox"/> No | <input type="checkbox"/> Yes <input checked="" type="checkbox"/> No | <input type="checkbox"/> Yes <input checked="" type="checkbox"/> No | <input type="checkbox"/> Yes <input checked="" type="checkbox"/> No | <input type="checkbox"/> Yes <input checked="" type="checkbox"/> No | <input type="checkbox"/> Yes <input checked="" type="checkbox"/> No | <input type="checkbox"/> Yes <input checked="" type="checkbox"/> No | |
| | COMMENTS | | | Loc Ruffed Oil in Pit Need diversion ditches | Loc. Needs Bladed Oil in Pit No Diversion Ditch | No Diversion Ditch | No Diversion ditch | No Diversion Ditch | No diversion ditch | Fence loose No Diversion ditch | |

| WELL NAME: | | | | | | | | | | |
|---|---|--|--|--|--|--|--|--|--|--|
| San Juan 28-6 Unit 143P | | | | | | | | | | |
| INSPECTOR | | Elmer Perry | Jon Berenz | Jon Berenz | Jon Berenz | Jon Berenz | Jon Berenz | Jon Berenz | Jon Berenz | Jon Berenz |
| DATE | | 06/25/10 | 07/01/10 | 07/12/10 | 07/20/10 | 07/27/10 | 08/03/10 | 08/11/10 | 08/18/10 | 08/24/10 |
| *Please request for pit extension after 26 weeks | | Week 10 | Week 11 | Week 12 | Week 13 | Week 14 | Week 15 | Week 16 | Week 17 | Week 18 |
| PIT STATUS | | <input checked="" type="checkbox"/> Drilled <input type="checkbox"/> Completed <input type="checkbox"/> Clean-Up | <input checked="" type="checkbox"/> Drilled <input type="checkbox"/> Completed <input type="checkbox"/> Clean-Up | <input checked="" type="checkbox"/> Drilled <input type="checkbox"/> Completed <input type="checkbox"/> Clean-Up | <input checked="" type="checkbox"/> Drilled <input type="checkbox"/> Completed <input type="checkbox"/> Clean-Up | <input type="checkbox"/> Drilled <input checked="" type="checkbox"/> Completed <input type="checkbox"/> Clean-Up | <input type="checkbox"/> Drilled <input checked="" type="checkbox"/> Completed <input type="checkbox"/> Clean-Up | <input type="checkbox"/> Drilled <input checked="" type="checkbox"/> Completed <input type="checkbox"/> Clean-Up | <input type="checkbox"/> Drilled <input checked="" type="checkbox"/> Completed <input type="checkbox"/> Clean-Up | <input type="checkbox"/> Drilled <input checked="" type="checkbox"/> Completed <input type="checkbox"/> Clean-Up |
| LOCATION | Is the location marked with the proper flagging? (Const. Zone, poles, pipelines, etc.) | <input checked="" type="checkbox"/> Yes <input type="checkbox"/> No | <input checked="" type="checkbox"/> Yes <input type="checkbox"/> No | <input checked="" type="checkbox"/> Yes <input type="checkbox"/> No | <input checked="" type="checkbox"/> Yes <input type="checkbox"/> No | <input checked="" type="checkbox"/> Yes <input type="checkbox"/> No | <input checked="" type="checkbox"/> Yes <input type="checkbox"/> No | <input checked="" type="checkbox"/> Yes <input type="checkbox"/> No | <input checked="" type="checkbox"/> Yes <input type="checkbox"/> No | <input checked="" type="checkbox"/> Yes <input type="checkbox"/> No |
| | Is the temporary well sign on location and visible from access road? | <input checked="" type="checkbox"/> Yes <input type="checkbox"/> No | <input checked="" type="checkbox"/> Yes <input type="checkbox"/> No | <input checked="" type="checkbox"/> Yes <input type="checkbox"/> No | <input checked="" type="checkbox"/> Yes <input type="checkbox"/> No | <input checked="" type="checkbox"/> Yes <input type="checkbox"/> No | <input checked="" type="checkbox"/> Yes <input type="checkbox"/> No | <input checked="" type="checkbox"/> Yes <input type="checkbox"/> No | <input checked="" type="checkbox"/> Yes <input type="checkbox"/> No | <input checked="" type="checkbox"/> Yes <input type="checkbox"/> No |
| ENVIRONMENTAL COMPLIANCE | Is the access road in good driving condition? (deep ruts, bladed) | <input checked="" type="checkbox"/> Yes <input type="checkbox"/> No | <input checked="" type="checkbox"/> Yes <input type="checkbox"/> No | <input checked="" type="checkbox"/> Yes <input type="checkbox"/> No | <input checked="" type="checkbox"/> Yes <input type="checkbox"/> No | <input checked="" type="checkbox"/> Yes <input type="checkbox"/> No | <input checked="" type="checkbox"/> Yes <input type="checkbox"/> No | <input type="checkbox"/> Yes <input checked="" type="checkbox"/> No | <input type="checkbox"/> Yes <input checked="" type="checkbox"/> No | <input type="checkbox"/> Yes <input checked="" type="checkbox"/> No |
| | Are the culverts free from debris or any object preventing flow? | <input checked="" type="checkbox"/> Yes <input type="checkbox"/> No | <input checked="" type="checkbox"/> Yes <input type="checkbox"/> No | <input checked="" type="checkbox"/> Yes <input type="checkbox"/> No | <input checked="" type="checkbox"/> Yes <input type="checkbox"/> No | <input checked="" type="checkbox"/> Yes <input type="checkbox"/> No | <input checked="" type="checkbox"/> Yes <input type="checkbox"/> No | <input checked="" type="checkbox"/> Yes <input type="checkbox"/> No | <input checked="" type="checkbox"/> Yes <input type="checkbox"/> No | <input checked="" type="checkbox"/> Yes <input type="checkbox"/> No |
| | Is the top of the location bladed and in good operating condition? | <input checked="" type="checkbox"/> Yes <input type="checkbox"/> No | <input checked="" type="checkbox"/> Yes <input type="checkbox"/> No | <input checked="" type="checkbox"/> Yes <input type="checkbox"/> No | <input checked="" type="checkbox"/> Yes <input type="checkbox"/> No | <input type="checkbox"/> Yes <input checked="" type="checkbox"/> No | <input type="checkbox"/> Yes <input checked="" type="checkbox"/> No | <input type="checkbox"/> Yes <input checked="" type="checkbox"/> No | <input type="checkbox"/> Yes <input checked="" type="checkbox"/> No | <input type="checkbox"/> Yes <input checked="" type="checkbox"/> No |
| | Is the fence stock-proof? (fences tight, barbed wire, fence clips in place?) | <input type="checkbox"/> Yes <input checked="" type="checkbox"/> No | <input type="checkbox"/> Yes <input checked="" type="checkbox"/> No | <input type="checkbox"/> Yes <input checked="" type="checkbox"/> No | <input type="checkbox"/> Yes <input checked="" type="checkbox"/> No | <input type="checkbox"/> Yes <input checked="" type="checkbox"/> No | <input checked="" type="checkbox"/> Yes <input type="checkbox"/> No | <input checked="" type="checkbox"/> Yes <input type="checkbox"/> No | <input checked="" type="checkbox"/> Yes <input type="checkbox"/> No | <input checked="" type="checkbox"/> Yes <input type="checkbox"/> No |
| | Is the pit liner in good operating condition? (no tears, up-rooting corners, etc.) | <input checked="" type="checkbox"/> Yes <input type="checkbox"/> No | <input checked="" type="checkbox"/> Yes <input type="checkbox"/> No | <input checked="" type="checkbox"/> Yes <input type="checkbox"/> No | <input checked="" type="checkbox"/> Yes <input type="checkbox"/> No | <input type="checkbox"/> Yes <input checked="" type="checkbox"/> No | <input checked="" type="checkbox"/> Yes <input type="checkbox"/> No | <input checked="" type="checkbox"/> Yes <input type="checkbox"/> No | <input checked="" type="checkbox"/> Yes <input type="checkbox"/> No | <input checked="" type="checkbox"/> Yes <input type="checkbox"/> No |
| | Is the the location free from trash, oil stains and other materials? (cables, pipe threads, etc.) | <input checked="" type="checkbox"/> Yes <input type="checkbox"/> No | <input type="checkbox"/> Yes <input checked="" type="checkbox"/> No | <input type="checkbox"/> Yes <input checked="" type="checkbox"/> No | <input checked="" type="checkbox"/> Yes <input type="checkbox"/> No | <input checked="" type="checkbox"/> Yes <input type="checkbox"/> No | <input checked="" type="checkbox"/> Yes <input type="checkbox"/> No | <input checked="" type="checkbox"/> Yes <input type="checkbox"/> No | <input checked="" type="checkbox"/> Yes <input type="checkbox"/> No | <input checked="" type="checkbox"/> Yes <input type="checkbox"/> No |
| | Does the pit contain two feet of free board? (check the water levels) | <input checked="" type="checkbox"/> Yes <input type="checkbox"/> No | <input checked="" type="checkbox"/> Yes <input type="checkbox"/> No | <input checked="" type="checkbox"/> Yes <input type="checkbox"/> No | <input checked="" type="checkbox"/> Yes <input type="checkbox"/> No | <input checked="" type="checkbox"/> Yes <input type="checkbox"/> No | <input checked="" type="checkbox"/> Yes <input type="checkbox"/> No | <input checked="" type="checkbox"/> Yes <input type="checkbox"/> No | <input checked="" type="checkbox"/> Yes <input type="checkbox"/> No | <input checked="" type="checkbox"/> Yes <input type="checkbox"/> No |
| | Is there any standing water on the blow pit? | <input type="checkbox"/> Yes <input checked="" type="checkbox"/> No | <input type="checkbox"/> Yes <input checked="" type="checkbox"/> No | <input type="checkbox"/> Yes <input checked="" type="checkbox"/> No | <input checked="" type="checkbox"/> Yes <input type="checkbox"/> No | <input type="checkbox"/> Yes <input checked="" type="checkbox"/> No | <input type="checkbox"/> Yes <input checked="" type="checkbox"/> No | <input type="checkbox"/> Yes <input checked="" type="checkbox"/> No | <input type="checkbox"/> Yes <input checked="" type="checkbox"/> No | <input type="checkbox"/> Yes <input checked="" type="checkbox"/> No |
| | Are the pits free of trash and oil? | <input checked="" type="checkbox"/> Yes <input type="checkbox"/> No | <input checked="" type="checkbox"/> Yes <input type="checkbox"/> No | <input checked="" type="checkbox"/> Yes <input type="checkbox"/> No | <input checked="" type="checkbox"/> Yes <input type="checkbox"/> No | <input checked="" type="checkbox"/> Yes <input type="checkbox"/> No | <input checked="" type="checkbox"/> Yes <input type="checkbox"/> No | <input checked="" type="checkbox"/> Yes <input type="checkbox"/> No | <input checked="" type="checkbox"/> Yes <input type="checkbox"/> No | <input checked="" type="checkbox"/> Yes <input type="checkbox"/> No |
| | Are there diversion ditches around the pits for natural drainage? | <input type="checkbox"/> Yes <input checked="" type="checkbox"/> No | <input type="checkbox"/> Yes <input checked="" type="checkbox"/> No | <input type="checkbox"/> Yes <input checked="" type="checkbox"/> No | <input type="checkbox"/> Yes <input checked="" type="checkbox"/> No | <input type="checkbox"/> Yes <input checked="" type="checkbox"/> No | <input type="checkbox"/> Yes <input checked="" type="checkbox"/> No | <input type="checkbox"/> Yes <input checked="" type="checkbox"/> No | <input type="checkbox"/> Yes <input checked="" type="checkbox"/> No | <input type="checkbox"/> Yes <input checked="" type="checkbox"/> No |
| | Is there a Manifold on location? | <input checked="" type="checkbox"/> Yes <input type="checkbox"/> No | <input checked="" type="checkbox"/> Yes <input type="checkbox"/> No | <input checked="" type="checkbox"/> Yes <input type="checkbox"/> No | <input checked="" type="checkbox"/> Yes <input type="checkbox"/> No | <input checked="" type="checkbox"/> Yes <input type="checkbox"/> No | <input checked="" type="checkbox"/> Yes <input type="checkbox"/> No | <input type="checkbox"/> Yes <input type="checkbox"/> No | <input checked="" type="checkbox"/> Yes <input type="checkbox"/> No | <input checked="" type="checkbox"/> Yes <input type="checkbox"/> No |
| Is the Manifold free of leaks? Are the hoses in good condition? | <input checked="" type="checkbox"/> Yes <input type="checkbox"/> No | <input checked="" type="checkbox"/> Yes <input type="checkbox"/> No | <input checked="" type="checkbox"/> Yes <input type="checkbox"/> No | <input checked="" type="checkbox"/> Yes <input type="checkbox"/> No | <input checked="" type="checkbox"/> Yes <input type="checkbox"/> No | <input checked="" type="checkbox"/> Yes <input type="checkbox"/> No | <input type="checkbox"/> Yes <input type="checkbox"/> No | <input checked="" type="checkbox"/> Yes <input type="checkbox"/> No | <input checked="" type="checkbox"/> Yes <input type="checkbox"/> No | |
| OC | Was the OCD contacted? | <input type="checkbox"/> Yes <input checked="" type="checkbox"/> No | <input type="checkbox"/> Yes <input checked="" type="checkbox"/> No | <input type="checkbox"/> Yes <input checked="" type="checkbox"/> No | <input type="checkbox"/> Yes <input checked="" type="checkbox"/> No | <input type="checkbox"/> Yes <input checked="" type="checkbox"/> No | <input type="checkbox"/> Yes <input checked="" type="checkbox"/> No | <input type="checkbox"/> Yes <input checked="" type="checkbox"/> No | <input type="checkbox"/> Yes <input checked="" type="checkbox"/> No | <input type="checkbox"/> Yes <input checked="" type="checkbox"/> No |
| | PICTURE TAKEN | <input type="checkbox"/> Yes <input checked="" type="checkbox"/> No | <input type="checkbox"/> Yes <input checked="" type="checkbox"/> No | <input type="checkbox"/> Yes <input checked="" type="checkbox"/> No | <input type="checkbox"/> Yes <input checked="" type="checkbox"/> No | <input type="checkbox"/> Yes <input checked="" type="checkbox"/> No | <input type="checkbox"/> Yes <input checked="" type="checkbox"/> No | <input type="checkbox"/> Yes <input checked="" type="checkbox"/> No | <input type="checkbox"/> Yes <input checked="" type="checkbox"/> No | <input type="checkbox"/> Yes <input checked="" type="checkbox"/> No |
| | COMMENTS | Fence loose No Diversion Ditch | Stains on location. | Fence loose, no diversion ditch. | No diversion ditch, rig on location. | No diversion ditch. Tears in liner. Fence loose. Location needs bladed. | No diversion ditch. Location needs bladed. | No diversion ditch.Rd.& location need bladed | No diversion ditch.Rd. & location need bladed | No diversion ditch,road &location need bladed |

| WELL NAME: | | | | | | | | | | | |
|--|--|--|--|--|---|---|---|---|---|---|---|
| San Juan 28-6 Unit 143P | | | | | | | | | | | |
| INSPECTOR | | Jon Berenz | Jon Berenz | Jon Berenz | | | | | | | |
| DATE | | 08/31/10 | 09/07/10 | 09/14/10 | | | | | | | |
| *Please request for pit extension after 26 weeks | | Week 19 | Week 20 | Week 21 | Week 22 | Week 23 | Week 24 | Week 25 | *Week 26* | Week 27 | |
| PIT STATUS | | <input type="checkbox"/> Drilled <input type="checkbox"/> Completed <input checked="" type="checkbox"/> Clean-Up | <input type="checkbox"/> Drilled <input type="checkbox"/> Completed <input checked="" type="checkbox"/> Clean-Up | <input type="checkbox"/> Drilled <input type="checkbox"/> Completed <input checked="" type="checkbox"/> Clean-Up | <input type="checkbox"/> Drilled <input type="checkbox"/> Completed <input type="checkbox"/> Clean-Up | <input type="checkbox"/> Drilled <input type="checkbox"/> Completed <input type="checkbox"/> Clean-Up | <input type="checkbox"/> Drilled <input type="checkbox"/> Completed <input type="checkbox"/> Clean-Up | <input type="checkbox"/> Drilled <input type="checkbox"/> Completed <input type="checkbox"/> Clean-Up | <input type="checkbox"/> Drilled <input type="checkbox"/> Completed <input type="checkbox"/> Clean-Up | <input type="checkbox"/> Drilled <input type="checkbox"/> Completed <input type="checkbox"/> Clean-Up | <input type="checkbox"/> Drilled <input type="checkbox"/> Completed <input type="checkbox"/> Clean-Up |
| LOCATION | Is the location marked with the proper flagging? (Const. Zone, poles, pipelines, etc.) | <input checked="" type="checkbox"/> Yes <input type="checkbox"/> No | <input checked="" type="checkbox"/> Yes <input type="checkbox"/> No | <input checked="" type="checkbox"/> Yes <input type="checkbox"/> No | <input type="checkbox"/> Yes <input type="checkbox"/> No | <input type="checkbox"/> Yes <input type="checkbox"/> No | <input type="checkbox"/> Yes <input type="checkbox"/> No | <input type="checkbox"/> Yes <input type="checkbox"/> No | <input type="checkbox"/> Yes <input type="checkbox"/> No | <input type="checkbox"/> Yes <input type="checkbox"/> No | |
| | Is the temporary well sign on location and visible from access road? | <input checked="" type="checkbox"/> Yes <input type="checkbox"/> No | <input checked="" type="checkbox"/> Yes <input type="checkbox"/> No | <input checked="" type="checkbox"/> Yes <input type="checkbox"/> No | <input type="checkbox"/> Yes <input type="checkbox"/> No | <input type="checkbox"/> Yes <input type="checkbox"/> No | <input type="checkbox"/> Yes <input type="checkbox"/> No | <input type="checkbox"/> Yes <input type="checkbox"/> No | <input type="checkbox"/> Yes <input type="checkbox"/> No | <input type="checkbox"/> Yes <input type="checkbox"/> No | |
| ENVIRONMENTAL COMPLIANCE | Is the access road in good driving condition? (deep ruts, bladed) | <input checked="" type="checkbox"/> Yes <input type="checkbox"/> No | <input checked="" type="checkbox"/> Yes <input type="checkbox"/> No | <input checked="" type="checkbox"/> Yes <input type="checkbox"/> No | <input type="checkbox"/> Yes <input type="checkbox"/> No | <input type="checkbox"/> Yes <input type="checkbox"/> No | <input type="checkbox"/> Yes <input type="checkbox"/> No | <input type="checkbox"/> Yes <input type="checkbox"/> No | <input type="checkbox"/> Yes <input type="checkbox"/> No | <input type="checkbox"/> Yes <input type="checkbox"/> No | |
| | Are the culverts free from debris or any object preventing flow? | <input checked="" type="checkbox"/> Yes <input type="checkbox"/> No | <input checked="" type="checkbox"/> Yes <input type="checkbox"/> No | <input checked="" type="checkbox"/> Yes <input type="checkbox"/> No | <input type="checkbox"/> Yes <input type="checkbox"/> No | <input type="checkbox"/> Yes <input type="checkbox"/> No | <input type="checkbox"/> Yes <input type="checkbox"/> No | <input type="checkbox"/> Yes <input type="checkbox"/> No | <input type="checkbox"/> Yes <input type="checkbox"/> No | <input type="checkbox"/> Yes <input type="checkbox"/> No | |
| | Is the top of the location bladed and in good operating condition? | <input type="checkbox"/> Yes <input checked="" type="checkbox"/> No | <input checked="" type="checkbox"/> Yes <input type="checkbox"/> No | <input checked="" type="checkbox"/> Yes <input type="checkbox"/> No | <input type="checkbox"/> Yes <input type="checkbox"/> No | <input type="checkbox"/> Yes <input type="checkbox"/> No | <input type="checkbox"/> Yes <input type="checkbox"/> No | <input type="checkbox"/> Yes <input type="checkbox"/> No | <input type="checkbox"/> Yes <input type="checkbox"/> No | <input type="checkbox"/> Yes <input type="checkbox"/> No | |
| | Is the fence stock-proof? (fences tight, barbed wire, fence clips in place?) | <input checked="" type="checkbox"/> Yes <input type="checkbox"/> No | <input type="checkbox"/> Yes <input checked="" type="checkbox"/> No | <input checked="" type="checkbox"/> Yes <input type="checkbox"/> No | <input type="checkbox"/> Yes <input type="checkbox"/> No | <input type="checkbox"/> Yes <input type="checkbox"/> No | <input type="checkbox"/> Yes <input type="checkbox"/> No | <input type="checkbox"/> Yes <input type="checkbox"/> No | <input type="checkbox"/> Yes <input type="checkbox"/> No | <input type="checkbox"/> Yes <input type="checkbox"/> No | |
| | Is the pit liner in good operating condition? (no tears, up-roofing corners, etc.) | <input checked="" type="checkbox"/> Yes <input type="checkbox"/> No | <input checked="" type="checkbox"/> Yes <input type="checkbox"/> No | <input checked="" type="checkbox"/> Yes <input type="checkbox"/> No | <input type="checkbox"/> Yes <input type="checkbox"/> No | <input type="checkbox"/> Yes <input type="checkbox"/> No | <input type="checkbox"/> Yes <input type="checkbox"/> No | <input type="checkbox"/> Yes <input type="checkbox"/> No | <input type="checkbox"/> Yes <input type="checkbox"/> No | <input type="checkbox"/> Yes <input type="checkbox"/> No | |
| | Is the the location free from trash, oil stains and other materials? (cables, pipe threads, etc.) | <input checked="" type="checkbox"/> Yes <input type="checkbox"/> No | <input checked="" type="checkbox"/> Yes <input type="checkbox"/> No | <input checked="" type="checkbox"/> Yes <input type="checkbox"/> No | <input type="checkbox"/> Yes <input type="checkbox"/> No | <input type="checkbox"/> Yes <input type="checkbox"/> No | <input type="checkbox"/> Yes <input type="checkbox"/> No | <input type="checkbox"/> Yes <input type="checkbox"/> No | <input type="checkbox"/> Yes <input type="checkbox"/> No | <input type="checkbox"/> Yes <input type="checkbox"/> No | |
| | Does the pit contain two feet of free board? (check the water levels) | <input checked="" type="checkbox"/> Yes <input type="checkbox"/> No | <input checked="" type="checkbox"/> Yes <input type="checkbox"/> No | <input checked="" type="checkbox"/> Yes <input type="checkbox"/> No | <input type="checkbox"/> Yes <input type="checkbox"/> No | <input type="checkbox"/> Yes <input type="checkbox"/> No | <input type="checkbox"/> Yes <input type="checkbox"/> No | <input type="checkbox"/> Yes <input type="checkbox"/> No | <input type="checkbox"/> Yes <input type="checkbox"/> No | <input type="checkbox"/> Yes <input type="checkbox"/> No | |
| | Is there any standing water on the blow pit? | <input type="checkbox"/> Yes <input checked="" type="checkbox"/> No | <input type="checkbox"/> Yes <input checked="" type="checkbox"/> No | <input type="checkbox"/> Yes <input checked="" type="checkbox"/> No | <input type="checkbox"/> Yes <input type="checkbox"/> No | <input type="checkbox"/> Yes <input type="checkbox"/> No | <input type="checkbox"/> Yes <input type="checkbox"/> No | <input type="checkbox"/> Yes <input type="checkbox"/> No | <input type="checkbox"/> Yes <input type="checkbox"/> No | <input type="checkbox"/> Yes <input type="checkbox"/> No | |
| | Are the pits free of trash and oil? | <input checked="" type="checkbox"/> Yes <input type="checkbox"/> No | <input checked="" type="checkbox"/> Yes <input type="checkbox"/> No | <input checked="" type="checkbox"/> Yes <input type="checkbox"/> No | <input type="checkbox"/> Yes <input type="checkbox"/> No | <input type="checkbox"/> Yes <input type="checkbox"/> No | <input type="checkbox"/> Yes <input type="checkbox"/> No | <input type="checkbox"/> Yes <input type="checkbox"/> No | <input type="checkbox"/> Yes <input type="checkbox"/> No | <input type="checkbox"/> Yes <input type="checkbox"/> No | |
| | Are there diversion ditches around the pits for natural drainage? | <input type="checkbox"/> Yes <input checked="" type="checkbox"/> No | <input type="checkbox"/> Yes <input checked="" type="checkbox"/> No | <input type="checkbox"/> Yes <input checked="" type="checkbox"/> No | <input type="checkbox"/> Yes <input type="checkbox"/> No | <input type="checkbox"/> Yes <input type="checkbox"/> No | <input type="checkbox"/> Yes <input type="checkbox"/> No | <input type="checkbox"/> Yes <input type="checkbox"/> No | <input type="checkbox"/> Yes <input type="checkbox"/> No | <input type="checkbox"/> Yes <input type="checkbox"/> No | |
| | Is there a Manifold on location? | <input checked="" type="checkbox"/> Yes <input type="checkbox"/> No | <input checked="" type="checkbox"/> Yes <input type="checkbox"/> No | <input checked="" type="checkbox"/> Yes <input type="checkbox"/> No | <input type="checkbox"/> Yes <input type="checkbox"/> No | <input type="checkbox"/> Yes <input type="checkbox"/> No | <input type="checkbox"/> Yes <input type="checkbox"/> No | <input type="checkbox"/> Yes <input type="checkbox"/> No | <input type="checkbox"/> Yes <input type="checkbox"/> No | <input type="checkbox"/> Yes <input type="checkbox"/> No | |
| Is the Manifold free of leaks? Are the hoses in good condition? | <input checked="" type="checkbox"/> Yes <input type="checkbox"/> No | <input checked="" type="checkbox"/> Yes <input type="checkbox"/> No | <input checked="" type="checkbox"/> Yes <input type="checkbox"/> No | <input type="checkbox"/> Yes <input type="checkbox"/> No | <input type="checkbox"/> Yes <input type="checkbox"/> No | <input type="checkbox"/> Yes <input type="checkbox"/> No | <input type="checkbox"/> Yes <input type="checkbox"/> No | <input type="checkbox"/> Yes <input type="checkbox"/> No | <input type="checkbox"/> Yes <input type="checkbox"/> No | | |
| OC | Was the OCD contacted? | <input type="checkbox"/> Yes <input checked="" type="checkbox"/> No | <input type="checkbox"/> Yes <input checked="" type="checkbox"/> No | <input type="checkbox"/> Yes <input checked="" type="checkbox"/> No | <input type="checkbox"/> Yes <input type="checkbox"/> No | <input type="checkbox"/> Yes <input type="checkbox"/> No | <input type="checkbox"/> Yes <input type="checkbox"/> No | <input type="checkbox"/> Yes <input type="checkbox"/> No | <input type="checkbox"/> Yes <input type="checkbox"/> No | <input type="checkbox"/> Yes <input type="checkbox"/> No | |
| | PICTURE TAKEN | <input type="checkbox"/> Yes <input checked="" type="checkbox"/> No | <input type="checkbox"/> Yes <input checked="" type="checkbox"/> No | <input type="checkbox"/> Yes <input checked="" type="checkbox"/> No | <input type="checkbox"/> Yes <input type="checkbox"/> No | <input type="checkbox"/> Yes <input type="checkbox"/> No | <input type="checkbox"/> Yes <input type="checkbox"/> No | <input type="checkbox"/> Yes <input type="checkbox"/> No | <input type="checkbox"/> Yes <input type="checkbox"/> No | <input type="checkbox"/> Yes <input type="checkbox"/> No | |
| | COMMENTS | No diversion ditch, location needs bladed. | Fence loose, no diversion ditch. | No diversion ditch. | | | | | | | |

RCVD FEB 3 '12
OIL CONS. DIV.

DIST. 3

DATE: 2/01/12

WELL NAME: SAN JUAN 28-6 UNIT 143P

API# 30-039-30805

PERMIT #: 8179

MISSING DATA: MISSING OCD 72HR WEEK NOTIFICATION

ATTACHED: OCD 72 HR WEEK NOTIFICATION (Reclamation notice)

Goodwin, Jamie L

From: Tally, Ethel
Sent: Thursday, September 16, 2010 2:03 PM
To: GRP:SJBU Regulatory; Blair, Maxwell O; Blakley, Mac; Clark, Joni E; Farrell, Juanita R; Gillette, Steven L (Gray Surface Specialties and Consulting, Ltd.); Greer, David A; Hines, Derek J (Finney Land Co.); Maxwell, Mary Alice; McWilliams, Peggy L; Seabolt, Elmo F; Stallsmith, Mark R; Mark Kelly; Robert Switzer; Sherrie Landon; Bassing, Kendal R.; Berenz (mxberenz@yahoo.com); Faver Norman; Fred Martinez; Jared Chavez; Lowe, Terry; Spearman, Bobby E; 'Steve McGlasson'; Becker, Joey W; Bowker, Terry D; Gordon Chenault; GRP:SJBU Production Leads; Hockett, Christy R; Bassing, Kendal R.; Kennedy, Jim R; Lopez, Richard A; O'Nan, Mike J.; Peace, James T; Pierce, Richard M; Poulson, Mark E; Smith, Randall O; Spearman, Bobby E; Stamets, Steve A; Thacker, LARRY; Work, Jim A; Payne, Wendy F
Cc: 'JDRITT@aol.com'
Subject: RECLAMATION NOTICE: SAN JUAN 28-6 UNIT 143P
Attachments: San Juan 28-6 Unit 143P.pdf

JD Ritter will move a tractor to the **San Juan 28-6 Unit 143P** to start the reclamation process on Tuesday, September 21, 2010. Please contact Norm Faver @ 320-0670 if you have any questions.



San Juan 28-6 Unit
143P.pdf (1...

Burlington Resources Well

SAN JUAN 28-6 UNIT 143P - BLM surface / BLM minerals

Network #: 10245510 Activity Code D250 (Reclamation)

Rio Arriba County, NM

Twin: San Juan 28-6 Unit 143 (existing)

1473' FSL, 1570' FWL

SEC.20, T28N, R06W

Unit Letter 'K'

Lease #: SF-079193

Latitude: 36° 38 min 36.96000 sec N (NAD 83)

Longitude: 107° 29 min 38.65200 sec W (NAD83)

Total Acres Disturbed: 3.03 acres

API #: 30-039-30805

Ethel Tally

Project Technician
ConocoPhillips-SJBU
3401 E. 30th
Farmington NM 87402
(505)599-4027
Ethel.Tally@ConocoPhillips.com

DATE: 6/22/12

RCVD JUN 26 '12

OIL CONS. DIV.

WELL NAME: SAN JUAN 28-6 UNIT 143P

API# 30-039-30805

PERMIT #: 8179

DIST. 3

MISSING DATA: MISSING OCD 72HR. WEEK NOTIFICATION

ATTACHED: MISSING OCD 72HR. WEEK NOTIFICATION

NMOCD closure notice was not sent to NMOCD due to distribution list not having correct information. This has been corrected by COPC by updating procedures with the correct e-mail addresses and information. The closure notice will be sent directly to Jonathan Kelly and Brandon Powell at the NMOCD.

Jamie Goodwin
ConocoPhillips
505-326-9784

Goodwin, Jamie L

From: Tally, Ethel
Sent: Thursday, September 16, 2010 2:03 PM
To: GRP:SJBU Regulatory; Blair, Maxwell O; Blakley, Mac; Clark, Joni E; Farrell, Juanita R; Gillette, Steven L (Gray Surface Specialties and Consulting, Ltd.); Greer, David A; Hines, Derek J (Finney Land Co.); Maxwell, Mary Alice; McWilliams, Peggy L; Seabolt, Elmo F; Stallsmith, Mark R; Mark Kelly; Robert Switzer; Sherrie Landon; Bassing, Kendal R.; Berenz (mxberenz@yahoo.com); Faver Norman; Fred Martinez; Jared Chavez; Lowe, Terry; Spearman, Bobby E; 'Steve McGlasson'; Becker, Joey W; Bowker, Terry D; Gordon Chenault; GRP:SJBU Production Leads; Hockett, Christy R; Bassing, Kendal R.; Kennedy, Jim R; Lopez, Richard A; O'Nan, Mike J.; Peace, James T; Pierce, Richard M; Poulson, Mark E; Smith, Randall O; Spearman, Bobby E; Stamets, Steve A; Thacker, LARRY; Work, Jim A; Payne, Wendy F
Cc: 'JDRITT@aol.com'
Subject: RECLAMATION NOTICE: SAN JUAN 28-6 UNIT 143P
Attachments: San Juan 28-6 Unit 143P.pdf

JD Ritter will move a tractor to the **San Juan 28-6 Unit 143P** to start the reclamation process on Tuesday, September 21, 2010. Please contact Norm Faver @ 320-0670 if you have any questions.



San Juan 28-6 Unit
143P.pdf (1...

Burlington Resources Well

SAN JUAN 28-6 UNIT 143P - BLM surface / BLM minerals

Network #: 10245510 Activity Code D250 (Reclamation)

Rio Arriba County, NM

Twin: San Juan 28-6 Unit 143 (existing)

1473' FSL, 1570' FWL

SEC.20, T28N, R06W

Unit Letter 'K'

Lease #: SF-079193

Latitude: 36° 38 min 36.96000 sec N (NAD 83)

Longitude: 107° 29 min 38.65200 sec W (NAD83)

Total Acres Disturbed: 3.03 acres

API #: 30-039-30805

Ethel Tally

Project Technician

ConocoPhillips-SJBU

3401 E. 30th

Farmington NM 87402

(505)599-4027

Ethel.Tally@ConocoPhillips.com