

UNITED STATES  
DEPARTMENT OF THE INTERIOR  
BUREAU OF LAND MANAGEMENT

RECEIVED

MAY 31 2012

FORM APPROVED  
OMB No. 1004-0137  
Expires July 31, 2010

Farmington Field Office  
Bureau of Land Management

**SUNDRY NOTICES AND REPORTS ON WELLS Management**  
**Do not use this form for proposals to drill or to re-enter an abandoned well. Use Form 3160-3 (APD) for such proposals.**

**SUBMIT IN TRIPLICATE - Other instructions on page 2**

1. Type of Well

☐

Oil Well

☒

Gas Well

☐

Other

2. Name of Operator

**Burlington Resources Oil & Gas Company LP**

3a. Address

**PO Box 4289, Farmington, NM 87499**

3b. Phone No. (include area code)

**(505) 326-9700**

4. Location of Well (Footage, Sec., T., R., M., or Survey Description)

**Surface Unit L (NWSW), 1450' FSL & 875' FWL, Sec.30, T30N, R7W**

5. Lease Serial No

**NMNM-012709**

6. If Indian, Allottee or Tribe Name

7. If Unit of CA/Agreement, Name and/or No.

**San Juan 30-6 Unit**

8. Well Name and No.

**San Juan 30-6 Unit 499**

9. API Well No.

**30-039-24948**

10. Field and Pool or Exploratory Area

**Basin Fruitland Coal**

11. Country or Parish, State

**Rio Arriba, New Mexico**

**12. CHECK THE APPROPRIATE BOX(ES) TO INDICATE NATURE OF NOTICE, REPORT OR OTHER DATA**

**TYPE OF SUBMISSION**

**TYPE OF ACTION**

☒ Notice of Intent

☐ Subsequent Report

☐ Final Abandonment Notice

☐ Acidize

☐ Alter Casing

☐ Casing Repair

☐ Change Plans

☐ Convert to Injection

☐ Deepen

☐ Fracture Treat

☐ New Construction

☒ Plug and Abandon

☐ Plug Back

☐ Production (Start/Resume)

☐ Reclamation

☐ Recomplete

☐ Temporarily Abandon

☐ Water Disposal

☐ Water Shut-Off

☐ Well Integrity

☐ Other

13. Describe Proposed or Completed Operation. Clearly state all pertinent details, including estimated starting date of any proposed work and approximate duration thereof. If the proposal is to deepen directionally or recompleat horizontally, give subsurface locations and measured and true vertical depths of all pertinent markers and zones. Attach the bond under which the work will be performed or provide the Bond No. on file with BLM/BIA. Required subsequent reports must be filed within 30 days following completion of the involved operations. If the operation results in a multiple completion or recompleat in a new interval, a Form 3160-4 must be filed once Testing has been completed. Final Abandonment Notices must be filed only after all requirements, including reclamation, have been completed and the operator has determined that the site is ready for final inspection.)

**Burlington Resources requests permission to P&A the subject well per the attached procedure, current and proposed wellbore schematics.**

**Notify NMOCD 24 hrs  
prior to beginning  
operations**

**RCVD JUN 7 '12  
OIL CONS. DIV.  
DIST. 3**

14. I hereby certify that the foregoing is true and correct. Name (Printed/Typed)

**Dollie L. Busse**

Title **Staff Regulatory Technician**

Signature

*Dollie L. Busse*

Date

*5/31/12*

**THIS SPACE FOR FEDERAL OR STATE OFFICE USE**

Approved by

**Original Signed: Stephen Mason**

Title

Date

**JUN 05 2012**

Conditions of approval, if any, are attached. Approval of this notice does not warrant or certify that the applicant holds legal or equitable title to those rights in the subject lease which would entitle the applicant to conduct operations thereon.

Office

Title 18 U.S.C. Section 1001 and Title 43 U.S.C. Section 1212, make it a crime for any person knowingly and willfully to make to any department or agency of the United States any false, fictitious or fraudulent statements or representations as to any matter within its jurisdiction.

(Instruction on page 2)

**NMOCD A**

**ConocoPhillips**  
**SAN JUAN 30-6 UNIT 499**  
**Expense - P&A**

Lat 36° 46' 49.116" N

Long 107° 36' 53.928" W

**PROCEDURE**

**This project requires a NMOCD C-144 CLEZ Closed-Loop System Permit for the use of an A-Plus steel tank to handle waste-fluids-circulated from the well and cement wash-up.**

**Also required: One cement retainer for 7" ID, 6.456" OD, 20# casing.**

1. Hold pre-job safety meeting. Comply with all NMOCD, BLM, and COPC safety and environmental regulations. Test rig anchors prior to moving in rig.
2. MIRU work over rig. Check casing, tubing, and bradenhead pressures and record them in Wellview.
3. When an existing primary valve (i.e. casing valve) is to be used, the existing piping should be removed and replaced with the appropriate piping for the intended operation.
4. RU blow lines from casing valves and begin blowing down casing pressure. Kill well with water, as necessary, and at least pump tubing capacity of water down tubing.
5. ND wellhead and NU BOPE. Function and pressure test BOP. PU and remove tubing hanger.
6. TOOH with tubing (per pertinent data sheet).

**Tubing:** Yes                      **Size:** 2-3/8"                      **Length:** 3,050'

Round trip casing scraper to top of liner @ 2,855' or as deep as possible.

**All cement volumes use 100% excess outside pipe and 50' excess inside pipe. The stabilizing wellbore fluid will be 8.3 ppg, sufficient to balance all exposed formation pressures. All cement will be ASTM Type II mixed at 15.6 ppg with a 1.18 cf/sk yield.**

**7. Plug 1 (Fruitland Coal Open Hole, Formation Top, and Liner Top, 2560-2850', 66 Sacks Class B Cement)**

RIH and set 7" CR at 2,850'. Load tubing with water and attempt to establish circulation. Pressure test casing to 800 psi and tubing to 560 psi. If casing does not test, isolate leaks and contact production engineer with results. Mix 66 sx Class B cement and spot inside the casing above CR to isolate the liner top and Fruitland Coal formation top. PUH.

1964 2250

**8. Plug 2 (Kirtland and Ojo Alamo Formation Tops, 1990-2240', 56 Sacks Class B Cement)**

Mix 56 sx Class B cement and spot a balanced plug inside the casing to isolate the Kirtland and Ojo Alamo formation tops. PUH.

730 430

**9. Plug 3 (Nacimiento Formation Top, 745-845', 29 Sacks Class B Cement)**

Mix 29 sx Class B cement and spot a balanced plug inside the casing to isolate the Nacimiento formation top. PUH.

**10. Plug 4 (Surface Shoe, 0-278', 64 Sacks Class B Cement)**

Connect the pump line to the bradenhead valve and attempt to pressure test the BH annulus to 300 PSI; note the volume to load. If the BH annulus holds pressure, then establish circulation out casing valve with water. Mix approximately 64 sxs Class B cement and spot a balanced plug inside the casing from 278' to surface, circulate good cement out casing valve. TOH and LD tubing. Shut well in and WOC. If the BH annulus does not test, then perforate at the appropriate depth and attempt to circulate cement to surface filling the 7" casing and the BH annulus to surface. Shut well in and WOC.

11. Nipple down BOP and cut off casing below the casing flange. Install P&A marker with cement to comply with regulations. Rig down, move off location, cut off anchors, and restore location.

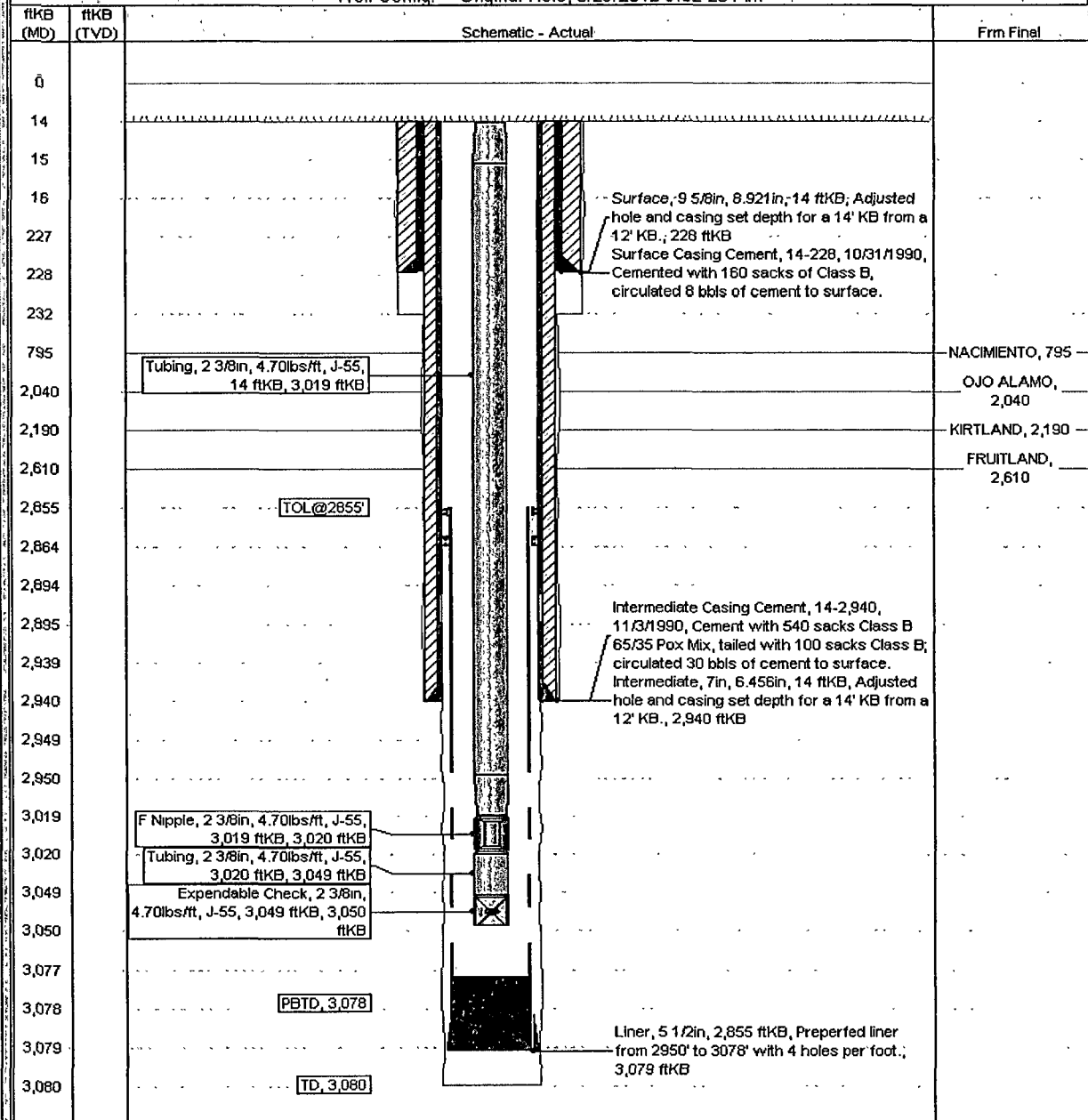
# Current Schematic

ConocoPhillips

Well Name: SAN JUAN 30-6 UNIT #499

API/Unit 3003924948	Surface Legal Location NMPM 030-030N-007W	Field Name BASIN (FRUITLAND COAL)	License No	State/Province NEW MEXICO	Well Configuration Type <a href="#">Edit</a>
Ground Elevation (ft) 6,254.00	Original KB/RT Elevation (ft) 6,268.00	KB-Ground Distance (ft) 14.00	KB-Casing Flange Distance (ft)	KB-Tubing Hanger Distance (ft)	

Well Config: - Original Hole: 5/29/2012 9:02 23-AM



ConocoPhillips

Well Name: SAN JUAN 30-6 UNIT #499

Schematic

API/Well 3003924948	Surface Legal Location NMPM,030-030N-007W	Field Name BACIN (FRUITLAND COAL)	License No.	State/Province NEW MEXICO	Well Configuration Type Edit
Ground Elevation (ft) 6,254.00	Original FRT Elevation (ft) 6,268.00	IS-Grout Distance (ft) 14.00	IS-Casing Flange Distance (ft)	IS-Tubing Hanger Distance (ft)	

Well Config: Original Hole, 1/1/2020

ftKB (MD)	Schematic - Actual	From Final
0		
14		
15		
16		
227	Surface, 9 5/8in, 8 9/21in, 14 ftKB, Adjusted hole and casing set depth for a 14' KB from a 12' KB., 228 ftKB	
228		Surface Casing Cement, 14-228, 10/31/1990, Cemented with 160 sacks of Class B; circulated 8 bbls of cement to surface.
232		Plug #4, 14-278, 1/1/2020, Mix approximately 64 sxs Class B cement and spot a balanced plug inside the casing from 278' to surface, circulate good cement cut casing valve.
278		
745		
795		NACIMIENTO, 795
845		Plug #3, 745-345, 1/1/2020, Mix 29 sxs Class B cement and spot a balanced plug inside the casing to isolate the Nacimiento formation top.
1,390		
2,040		OJO ALAMO, 2,040
2,190		KIRTLAND 2,190
2,240		Plug #2, 1,390-2,240 1/1/2020, Mix 58 sxs Class B cement and spot a balanced plug inside the casing to isolate the Kirtland and Ojo Alamo formation tops.
2,560		
2,610		FRUITLAND, 2,610
2,850		Plug #1, 2,560-2,850, 1/1/2020, Mix 66 sxs Class B cement and spot inside the casing above CR to isolate the liner top and Fruitland Coal formation top.
2,855	TOL@2855'	
2,864		
2,894		
2,895		
2,939	Intermediate, 7in, 6.456in, 14 ftKB, Adjusted hole and casing set depth for a 14' KB from a 12' KB., 2,940 ftKB	
2,940		Intermediate Casing Cement, 14-2,940, 11/3/1990, Cement with 540 sacks Class B 65/35 Pox Mix, tailed with 100 sacks Class B; circulated 30 bbls of cement to surface.
2,949		
2,950		
3,019		
3,020		
3,049		
3,050		
3,077	PBTD, 3,078	
3,078	Liner, 5 1/2in, 2,855 ftKB, Prepared liner from 2,950' to 3,078' with 4 holes per foot., 3,079 ftKB	
3,079		
3,080	TD, 3,080	

**UNITED STATES DEPARTMENT OF THE INTERIOR  
BUREAU OF LAND MANAGEMENT  
FARMINGTON DISTRICT OFFICE  
6251 COLLEGE BLVD.  
FARMINGTON, NEW MEXICO 87402**

Attachment to notice of  
Intention to Abandon:

Re: Permanent Abandonment  
Well: 499 San Juan 30-6 Unit

**CONDITIONS OF APPROVAL**

1. Plugging operations authorized are subject to the attached "General Requirements for Permanent Abandonment of Wells on Federal and Indian Lease."
2. Farmington Office is to be notified at least 24 hours before the plugging operations commence (505) 564-7750.
3. The following modifications to your plugging program are to be made:
  - a) Place the Kirtland/Ojo Alamo plug from 2250' – 1964'.
  - b) Place the Nacimiento plug from 830' – 730'.

You are also required to place cement excesses per 4.2 and 4.4 of the attached General Requirements.

Office Hours: 7:45 a.m. to 4:30 p.m.