

Submit 1 Copy To Appropriate District Office
District I - (575) 393-6161
1625 N. French Dr., Hobbs, NM 88240
District II - (575) 748-1283
811 S. First St., Artesia, NM 88210
District III - (505) 334-6178
1000 Rio Brazos Rd., Aztec, NM 87410
District IV - (505) 476-3460
1220 S. St. Francis Dr., Santa Fe, NM 87505

State of New Mexico
Energy, Minerals and Natural Resources

Form C-103
Revised August 1, 2011

OIL CONSERVATION DIVISION
1220 South St. Francis Dr.
Santa Fe, NM 87505

WELL API NO.
30-045-24169

5. Indicate Type of Lease
STATE ☐ FEE ☒

6. State Oil & Gas Lease No.

7. Lease Name or Unit Agreement Name
Gallegos Canyon Unit

8. Well Number **173E**

9. OGRID Number
000778

10. Pool name or Wildcat
Basin Mancos

SUNDRY NOTICES AND REPORTS ON WELLS
(DO NOT USE THIS FORM FOR PROPOSALS TO DRILL OR TO DEEPEN OR PLUG BACK TO A DIFFERENT RESERVOIR USE "APPLICATION FOR PERMIT" (FORM C-101) FOR SUCH PROPOSALS)

1. Type of Well: Oil Well ☐ Gas Well ☒ Other

2. Name of Operator
BP America Production Company

3. Address of Operator
P.O. Box 3092 Houston, TX 77253

4. Well Location **1925**
Unit Letter **E** : **1870'** feet from the **North** line and **635** feet from the **West** line
Section **29** Township **29N** Range **12W** NMPM **San Juan** County

11. Elevation (Show whether DR, RKB, RT, GR, etc.)
5303'

12. Check Appropriate Box to Indicate Nature of Notice, Report or Other Data

NOTICE OF INTENTION TO:

PERFORM REMEDIAL WORK ☐ PLUG AND ABANDON ☐
TEMPORARILY ABANDON ☐ CHANGE PLANS ☐
PULL OR ALTER CASING ☐ MULTIPLE COMPL ☐
DOWNHOLE COMMINGLE ☐

SUBSEQUENT REPORT OF:

REMEDIAL WORK ☐ ALTERING CASING ☐
COMMENCE DRILLING OPNS. ☐
CASING/CEMENT JOB ☐

OTHER: Recompletion to Mancos ☒

OTHER: ☐

13 Describe proposed or completed operations (Clearly state all pertinent details, and give pertinent dates, including estimated date of starting any proposed work).
SEE RULE 19.15 7 14 NMAC For Multiple Completions: Attach wellbore diagram of proposed completion or recompletion

BP respectfully requests permission to plug the Dakota formation and recomplete into the basin Mancos. Please see the attached procedure of the subject well.

RCVD JUN 6 '12

OIL CONS. DIV.

submit CBL to OCD for review before Proceeding with Production Arts,

Spud Date:

4/8/1980

Rig Release Date:

I hereby certify that the information above is true and complete to the best of my knowledge and belief.

SIGNATURE Ranad Abdallah TITLE Regulatory Analyst DATE 06/05/2012

Type or print name Ranad Abdallah E-mail address: Ranad.Abdallah@bp.com PHONE: 281-366-4632

For State Use Only

APPROVED BY: [Signature] TITLE Deputy Oil & Gas Inspector, District #3 DATE 6/13/12
Conditions of Approval (if any):
A

Well Name: GCU 173E-DK
Location: E SEC. 29, T29NN, R12WW
County: SAN JUAN
State: New Mexico
Field Name: Dakota
API #: 30-045-24169-00

1. Check and record tubing, casing, and bradenhead pressures.
2. Set cement retainer at 5730' +/- and abandon Dakota by placing 250' of cement on retainer
3. Run CBL and USIT to determine integrity of the casing and cement. Pressure test casing and cement plug to 250 psig low and 3500 psig high. Repair casing as necessary.
4. Perforate lower zone: 5140'-5250'
5. Perform Falling Pressure Test.
6. Run downhole pressure gauge.
7. Perform DFIT test. Shut in for 1 week to collect pressure data.
8. Retrieve downhole pressure gauge.
9. Frac perforations w/ slickwater and X-linked gel (hybrid) with tracer and approx. 150,000# sand.
10. Flow back frac.
11. Cleanout perfs.
12. Run tracer/temp/spinner combo log (Protechnics) for frac surveillance.
13. Plug back perforated interval to prepare for the next frac stage.
14. Perforate upper zone: 4890'-4980'
15. Perform Falling Pressure Test.
16. Run downhole pressure gauge
17. Perform DFIT test. Shut in for 1 week to collect pressure data.
18. Retrieve downhole pressure gauge.
19. Frac perforation with slickwater and X-linked gel (hybrid) with tracer and approx. 150,000# sand.
20. Flow back frac.
21. Cleanout perfs.
22. Run tracer/temp/spinner combo log (Protechnics) for frac surveillance.
23. Drill out CIBP
24. RIH w/ workstring and tag for fill.
25. Cleanout wellbore to at least 100' below the lowest Mancos perforation (6140').
26. LD workstring and PU production tubing.
27. Run 2 3/8" production tubing with mule shoe and "F" nipple. Land tubing above the Mancos perforations (at least 50' above Mancos perfs) to allow production logging.
28. Perform production logging @ 0 months, 3 months and 6 months
29. Reposition tubing to ~50' below lowest perforation

Current Wellbore



GCU 173E
Dakota
30-045-24169
T-29N, R-12-W, Sec 29
San Juan County, New Mexico

Well History

4/8/80 Spud date
4/17/80 Date T D Reached
11/5/80 Dakota completion date
9/13/94 Well Servicing
2/26/2001 Bradenhead Repair report: Ran CBL
Tested csg at 1200# Cleaned out and relanded tubing
3/18/10 Wireline Retrieved slip stop Tagged fill at 5895'
Ran pressure/temp gauge and gradient survey Set
new slip stop at 5803' Nipple at 5810'

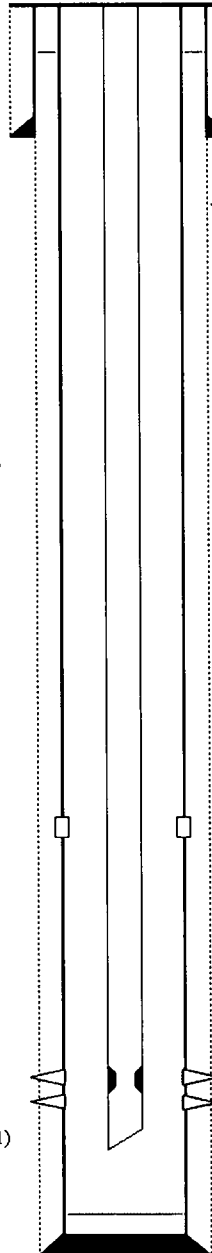
Formation Tops

Pictured Cliffs	1165
Lewis Shale	1194
Mesaverde	2910
Mancos Shale	3974
Gallup	4888
Mancos Shale	5259
Greenhorn	5660
Graneros Shale	5712
Graneros Dakota	5758
Main Dakota	5824

2 3/8" F-Nipple w/ 1 7/8" ID at 5857 1'

2 3/8" tubing set at 5859 1' (2001)

Ground Elevation. 5303'



TOC @ surface

Surface Casing Data

(12 1/4" hole)
8-5/8", 24# @ 318'
Cmt w/ 315 sx Class B Neat 2% CaCl2
Circulated to surface

TOC Unknown, no cement returned to surface
during either stage

Tubing Details

Tubing 184 jts, 2 3/8", 4 7#, J-55, T&C

Length

5859 1

DV Tool @ 4142'

Perforation Data

5760-5772'
5834-5858'
with 2 spf, total of 72, 0 38" holes
Frased w/ 71,000 gals frac fluid &
208,000# 20/40 sand

Production Casing Data

(7 7/8" hole)
4 1/2", 10 5# @ 5968'
Stage 1 340 sx Class B Neat, 50 50 Poz,
6% gel, 2# Med Tuf plug per sx, 0 8% fluid loss ad
Tailed w/ 100 sx class B Neat
Stage 2 740 sx Class B Neat, 65 35 Poz,
6% gel, 2# Med Tuf plug per sx, 0 8% fluid loss ad
Tailed w/ 100 sx class B Neat

PBTD 5968'
TD 6000'

Proposed Wellbore



GCU 173E
Dakota
30-045-24169
T-29N, R-12-W, Sec 29
San Juan County, New Mexico

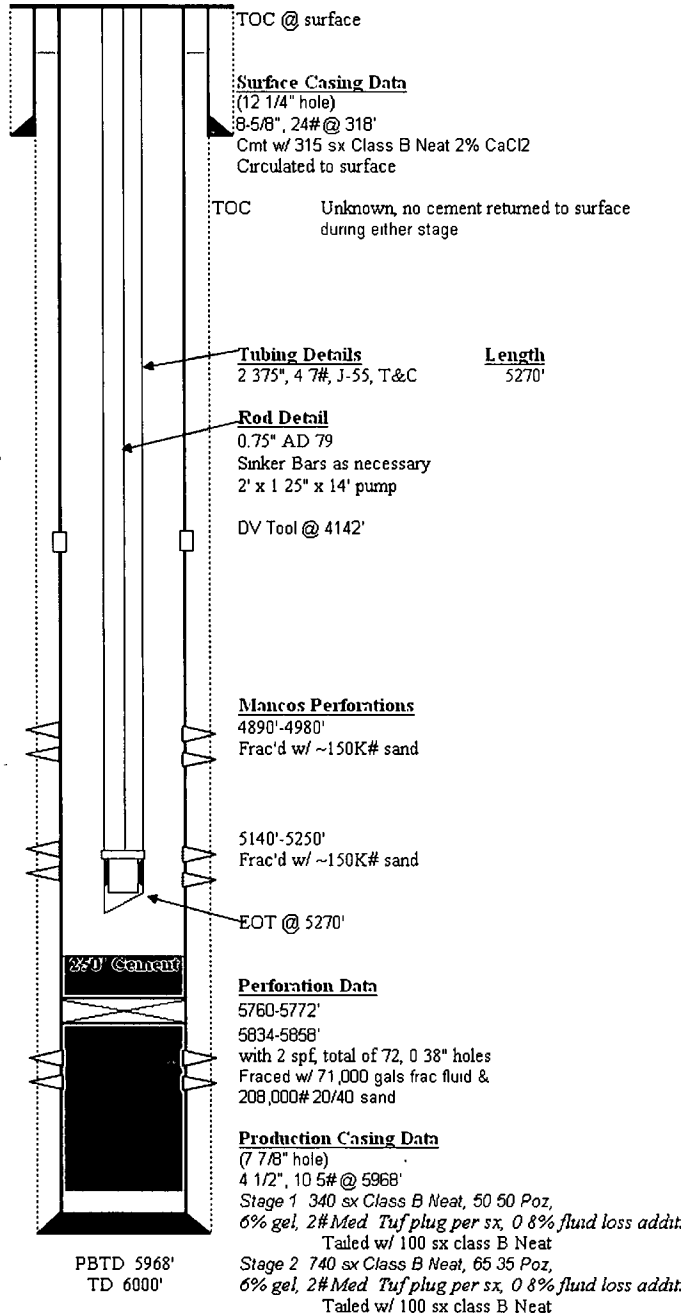
Well History

4/8/80 Spud date
4/17/80 Date T.D. Reached
11/5/80 Dakota completion date
9/13/94 Well Servicing
2/26/2001 Bradenhead Repair report Ran CBL
Tested csg at 1200# Cleaned out and relanded tubing
3/18/10 Wireline Retrieved slip stop Tagged fill at 5895'
Ran pressure/temp gauge and gradient survey Set
new slip stop at 5803' Nipple at 5810'

Formation Tops

Pictured Cliffs	1165
Lewis Shale	1194
Mesaverde	2910
Mancos Shale	3974
Gallup	4888
Mancos Shale	5259
Greenhorn	5660
Graneros Shale	5712
Graneros Dakota	5758
Main Dakota	5824

Ground Elevation 5303'



Length
5270'

1625 N. French Dr., Hobbs, NM 88240

District II

811 South First, Artesia, NM 88210

District III

1000 Rio Brazos Rd., Aztec, NM 87410

District IV

2040 South Pacheco, Santa Fe, NM 87505

State of New Mexico
Energy, Minerals & Natural Resources Department

OIL CONSERVATION DIVISION
2040 South Pacheco
Santa Fe, NM 87505

Form C-102
Revised August 15, 2000

Submit to Appropriate District Office
State Lease - 4 Copies
Fee Lease - 3 Copies

☐ **AMENDED REPORT**

WELL LOCATION AND ACREAGE DEDICATION PLAT

¹ API Number 30-045-24169		² Pool Code 97232	³ Pool Name Basin Mancos
⁴ Property Code 000570	⁵ Property Name Gallegos Canyon Unit		⁶ Well Number 173E
⁷ OGRID No. 000778	⁸ Operator Name BP America Production Company		⁹ Elevation 5303' GL

¹⁰ Surface Location

UL or lot no.	Section	Township	Range	Lot Idn	Feet from the	North/South line	Feet from the	East/West line	County
Unit E	29	29N	12W		1870'	North	790'	West	San Juan

¹¹ Bottom Hole Location If Different From Surface

UL or lot no.	Section	Township	Range	Lot Idn	Feet from the	North/South line	Feet from the	East/West line	County
---------------	---------	----------	-------	---------	---------------	------------------	---------------	----------------	--------

¹² Dedicated Acres 320 Ac.	¹³ Joint or Infill	¹⁴ Consolidation Code	¹⁵ Order No.
---	-------------------------------	----------------------------------	-------------------------

NO ALLOWABLE WILL BE ASSIGNED TO THIS COMPLETION UNTIL ALL INTERESTS HAVE BEEN CONSOLIDATED OR A NON-STANDARD UNIT HAS BEEN APPROVED BY THE DIVISION

1870'	790'				<p>17 OPERATOR CERTIFICATION</p> <p><i>I hereby certify that the information contained herein is true and complete to the best of my knowledge and belief.</i></p> <p><i>Ranad Abdallah</i></p> <p>Signature</p> <p>Ranad Abdallah</p> <p>Printed Name</p> <p>Regulatory Analyst</p> <p>Title</p> <p>6/5/2012</p> <p>Date</p>
					<p>18 SURVEYOR CERTIFICATION</p> <p><i>I hereby certify that the well location shown on this plat was plotted from field notes of actual surveys made by me or under my supervision, and that the same is true and correct to the best of my belief</i></p> <p>1/3/1980</p> <p>Date of Survey</p> <p>Signature and Seal of Professional Surveyor</p> <p>Fred B. Kerr Jr.</p> <p>3950</p> <p>Certificate Number</p>