

District I
1625 N French Dr., Hobbs, NM 88240

District II
1301 W Grand Ave., Artesia, NM 88210

District III
1000 Rio Brazos Rd., Aztec, NM 87410

District IV
1220 S. St. Francis Dr., Santa Fe, NM 87505

State of New Mexico
Energy Minerals and Natural Resources

Department
Oil Conservation Division
1220 South St. Francis Dr.
Santa Fe, NM 87505

Form C-144
July 21, 2008

For temporary pits, closed-loop systems, and below-grade tanks, submit to the appropriate NMOCD District Office

For permanent pits and exceptions submit to the Santa Fe Environmental Bureau office and provide a copy to the appropriate NMOCD District Office

**Pit, Closed-Loop System, Below-Grade Tank, or
Proposed Alternative Method Permit or Closure Plan Application**

- Type of action:
- ☐ Permit of a pit, closed-loop system, below-grade tank, or proposed alternative method
 - ☒ Closure of a pit, closed-loop system, below-grade tank, or proposed alternative method
 - ☐ Modification to an existing permit
 - ☐ Closure plan only submitted for an existing permitted or non-permitted pit, closed-loop system, below-grade tank, or proposed alternative method

Instructions: Please submit one application (Form C-144) per individual pit, closed-loop system, below-grade tank or alternative request

Please be advised that approval of this request does not relieve the operator of liability should operations result in pollution of surface water, ground water or the environment. Nor does approval relieve the operator of its responsibility to comply with any other applicable governmental authority's rules, regulations or ordinances

Operator: Burlington Resources Oil & Gas Company, LP		OGRID#: 14538
Address: P.O. Box 4289, Farmington, NM 87499		
Facility or well name: HUERFANITO UNIT 79N		
API Number: 30-045-34950	OCD Permit Number: _____	
U/L or Qtr/Qtr: P(SE/SE)	Section: 26	Township: 27N Range: 9W County: SAN JUAN
Center of Proposed Design: Latitude: 36.540049 °N	Longitude: 107.750289 °W	NAD: <input type="checkbox"/> 1927 <input checked="" type="checkbox"/> 1983
Surface Owner: <input checked="" type="checkbox"/> Federal <input type="checkbox"/> State <input type="checkbox"/> Private <input type="checkbox"/> Tribal Trust or Indian Allotment		

<input checked="" type="checkbox"/> Pit: Subsection F or G of 19.15.17.11 NMAC		RCVD JUL 26 '12 OIL CONS. DIV. DIST. 3
Temporary:	<input checked="" type="checkbox"/> Drilling <input type="checkbox"/> Workover	
<input type="checkbox"/> Permanent	<input type="checkbox"/> Emergency <input type="checkbox"/> Cavitation <input type="checkbox"/> P&A	
<input checked="" type="checkbox"/> Lined	<input type="checkbox"/> Unlined Liner type: Thickness 20 mil <input checked="" type="checkbox"/> LLDPE <input type="checkbox"/> HDPE <input type="checkbox"/> PVC <input type="checkbox"/> Other _____	
<input checked="" type="checkbox"/> String-Reinforced		
Liner Seams: <input checked="" type="checkbox"/> Welded <input checked="" type="checkbox"/> Factory <input type="checkbox"/> Other _____		Volume: 7700' bbl Dimensions L 120' x W 55' x D 12'

<input type="checkbox"/> Closed-loop System: Subsection H of 19.15.17.11 NMAC	
Type of Operation:	<input type="checkbox"/> P&A <input type="checkbox"/> Drilling a new well <input type="checkbox"/> Workover or Drilling (Applies to activities which require prior approval of a permit or notice of intent)
<input type="checkbox"/> Drying Pad	<input type="checkbox"/> Above Ground Steel Tanks <input type="checkbox"/> Haul-off Bins <input type="checkbox"/> Other _____
<input type="checkbox"/> Lined	<input type="checkbox"/> Unlined Liner type: Thickness _____ mil <input type="checkbox"/> LLDPE <input type="checkbox"/> HDPE <input type="checkbox"/> PVD <input type="checkbox"/> Other _____
Liner Seams: <input type="checkbox"/> Welded <input type="checkbox"/> Factory <input type="checkbox"/> Other _____	

<input type="checkbox"/> Below-grade tank: Subsection I of 19.15.17.11 NMAC	
Volume: _____ bbl	Type of fluid: _____
Tank Construction material: _____	
<input type="checkbox"/> Secondary containment with leak detection	<input type="checkbox"/> Visible sidewalls, liner, 6-inch lift and automatic overflow shut-off
<input type="checkbox"/> Visible sidewalls and liner	<input type="checkbox"/> Visible sidewalls only <input type="checkbox"/> Other _____
Liner Type: Thickness _____ mil	<input type="checkbox"/> HDPE <input type="checkbox"/> PVC <input type="checkbox"/> Other _____

<input type="checkbox"/> Alternative Method:
Submittal of an exception request is required Exceptions must be submitted to the Santa Fe Environmental Bureau office for consideration of approval.

6

Fencing: Subsection D of 19.15.17.11 NMAC (*Applies to permanent pit, temporary pits, and below-grade tanks*)

☐

Chain link, six feet in height, two strands of barbed wire at top (*Required if located within 1000 feet of a permanent residence, school, hospital, institution or church*)

☐

Four foot height, four strands of barbed wire evenly spaced between one and four feet

☐

Alternate. Please specify _____

7

Netting: Subsection E of 19.15.17.11 NMAC (*Applies to permanent pits and permanent open top tanks*)

☐

Screen

☐

Netting

☐

Other

☐

Monthly inspections (*If netting or screening is not physically feasible*)

8

Signs: Subsection C of 19.15.17.11 NMAC

☐

12" X 24", 2" lettering, providing Operator's name, site location, and emergency telephone numbers

☒

Signed in compliance with 19.15.3.103 NMAC

9

Administrative Approvals and Exceptions:

Justifications and/or demonstrations of equivalency are required. Please refer to 19.15.17 NMAC for guidance.

Please check a box if one or more of the following is requested, if not leave blank:

☐

Administrative approval(s). Requests must be submitted to the appropriate division/district of the Santa Fe Environmental Bureau office for consideration of approval. (Fencing/BGT Liner)

☐

Exception(s). Requests must be submitted to the Santa Fe Environmental Bureau office for consideration of approval.

10

Siting Criteria (regarding permitting) 19.15.17.10 NMAC

Instructions: The applicant must demonstrate compliance for each siting criteria below in the application. Recommendations of acceptable source material are provided below. Requests regarding changes to certain siting criteria may require administrative approval from the appropriate district office or may be considered an exception which must be submitted to the Santa Fe Environmental Bureau Office for consideration of approval. Applicant must attach justification for request. Please refer to 19.15.17.10 NMAC for guidance. Siting criteria does not apply to drying pads or above grade-tanks associated with a closed-loop system.

Ground water is less than 50 feet below the bottom of the temporary pit, permanent pit, or below-grade tank.

- NM Office of the State Engineer - iWATERS database search; USGS; Data obtained from nearby wells

☐ Yes

☐ No

Within 300 feet of a continuously flowing watercourse, or 200 feet of any other watercourse, lakebed, sinkhole, or playa lake (measured from the ordinary high-water mark).

- Topographic map; Visual inspection (certification) of the proposed site

☐ Yes

☐ No

Within 300 feet from a permanent residence, school, hospital, institution, or church in existence at the time of initial application.

(*Applies to temporary, emergency, or cavitation pits and below-grade tanks*)

- Visual inspection (certification) of the proposed site; Aerial photo; Satellite image

☐ Yes

☐ No

☐ NA

Within 1000 feet from a permanent residence, school, hospital, institution, or church in existence at the time of initial application.

(*Applied to permanent pits*)

- Visual inspection (certification) of the proposed site; Aerial photo; Satellite image

☐ Yes

☐ No

☐ NA

Within 500 horizontal feet of a private, domestic fresh water well or spring that less than five households use for domestic or stock watering purposes, or within 1000 horizontal feet of any other fresh water well or spring, in existence at the time of initial application.

- NM Office of the State Engineer - iWATERS database search; Visual inspection (certification) of the proposed site.

☐ Yes

☐ No

Within incorporated municipal boundaries or within a defined municipal fresh water well field covered under a municipal ordinance adopted pursuant to NMSA 1978, Section 3-27-3, as amended

- Written confirmation or verification from the municipality. Written approval obtained from the municipality

☐ Yes

☐ No

Within 500 feet of a wetland.

- US Fish and Wildlife Wetland Identification map; Topographic map; Visual inspection (certification) of the proposed site

☐ Yes

☐ No

Within the area overlying a subsurface mine.

- Written confirmation or verification or map from the NM EMNRD - Mining and Mineral Division

☐ Yes

☐ No

Within an unstable area.

- Engineering measures incorporated into the design; NM Bureau of Geology & Mineral Resources; USGS; NM Geological Society; Topographic map

☐ Yes

☐ No

Within a 100-year floodplain

- FEMA map

☐ Yes

☐ No

11

Temporary Pits, Emergency Pits and Below-grade Tanks Permit Application Attachment Checklist Subsection B of 19.15.17.9 NMAC*Instructions: Each of the following items must be attached to the application. Please indicate, by a check mark in the box, that the documents are attached.*

- ☐ Hydrogeologic Report (Below-grade Tanks) - based upon the requirements of Paragraph (4) of Subsection B of 19.15.17.9 NMAC
- ☐ Hydrogeologic Data (Temporary and Emergency Pits) - based upon the requirements of Paragraph (2) of Subsection B of 19.15.17.9 NMAC
- ☐ Siting Criteria Compliance Demonstrations - based upon the appropriate requirements of 19.15.17.10 NMAC
- ☐ Design Plan - based upon the appropriate requirements of 19.15.17.11 NMAC
- ☐ Operating and Maintenance Plan - based upon the appropriate requirements of 19.15.17.12 NMAC
- ☐ Closure Plan (Please complete Boxes 14 through 18, if applicable) - based upon the appropriate requirements of Subsection C of 19.15.17.9 NMAC and 19.15.17.13 NMAC

☐ Previously Approved Design (attach copy of design) API _____ or Permit _____

12

Closed-loop Systems Permit Application Attachment Checklist: Subsection B of 19.15.17.9 NMAC*Instructions: Each of the following items must be attached to the application. Please indicate, by a check mark in the box, that the documents are attached.*

- ☐ Geologic and Hydrogeologic Data (only for on-site closure) - based upon the requirements of Paragraph (3) of Subsection B of 19.15.17.9 NMAC
- ☐ Siting Criteria Compliance Demonstrations (only for on-site closure) - based upon the appropriate requirements of 19.15.17.10 NMAC
- ☐ Design Plan - based upon the appropriate requirements of 19.15.17.11 NMAC
- ☐ Operating and Maintenance Plan - based upon the appropriate requirements of 19.15.17.12 NMAC
- ☐ Closure Plan (Please complete Boxes 14 through 18, if applicable) - based upon the appropriate requirements of Subsection C of 19.15.17.9 NMAC and 19.15.17.13 NMAC

☐ Previously Approved Design (attach copy of design) API _____

☐ Previously Approved Operating and Maintenance Plan API _____

13

Permanent Pits Permit Application Checklist: Subsection B of 19.15.17.9 NMAC*Instructions: Each of the following items must be attached to the application. Please indicate, by a check mark in the box, that the documents are attached.*

- ☐ Hydrogeologic Report - based upon the requirements of Paragraph (1) of Subsection B of 19.15.17.9 NMAC
- ☐ Siting Criteria Compliance Demonstrations - based upon the appropriate requirements of 19.15.17.10 NMAC
- ☐ Climatological Factors Assessment
- ☐ Certified Engineering Design Plans - based upon the appropriate requirements of 19.15.17.11 NMAC
- ☐ Dike Protection and Structural Integrity Design: based upon the appropriate requirements of 19.15.17.11 NMAC
- ☐ Leak Detection Design - based upon the appropriate requirements of 19.15.17.11 NMAC
- ☐ Liner Specifications and Compatibility Assessment - based upon the appropriate requirements of 19.15.17.11 NMAC
- ☐ Quality Control/Quality Assurance Construction and Installation Plan
- ☐ Operating and Maintenance Plan - based upon the appropriate requirements of 19.15.17.12 NMAC
- ☐ Freeboard and Overtopping Prevention Plan - based upon the appropriate requirements of 19.15.17.11 NMAC
- ☐ Nuisance or Hazardous Odors, including H₂S, Prevention Plan
- ☐ Emergency Response Plan
- ☐ Oil Field Waste Stream Characterization
- ☐ Monitoring and Inspection Plan
- ☐ Erosion Control Plan
- ☐ Closure Plan - based upon the appropriate requirements of Subsection C of 19.15.17.9 NMAC and 19.15.17.13 NMAC

14

Proposed Closure: 19.15.17.13 NMAC*Instructions: Please complete the applicable boxes, Boxes 14 through 18, in regards to the proposed closure plan.*

Type. ☐ Drilling ☐ Workover ☐ Emergency ☐ Cavitation ☐ P&A ☐ Permanent Pit ☐ Below-grade Tank ☐ Closed-loop System

☐ Alternative

Proposed Closure Method. ☐ Waste Excavation and Removal

☐ Waste Removal (Closed-loop systems only)

☐ On-site Closure Method (only for temporary pits and closed-loop systems)

☐ In-place Burial ☐ On-site Trench

☐ Alternative Closure Method (Exceptions must be submitted to the Santa Fe Environmental Bureau for consideration)

15

Waste Excavation and Removal Closure Plan Checklist (19.15.17.13 NMAC) *Instructions: Each of the following items must be attached to the closure plan.**Please indicate, by a check mark in the box, that the documents are attached.*

- ☐ Protocols and Procedures - based upon the appropriate requirements of 19.15.17.13 NMAC
- ☐ Confirmation Sampling Plan (if applicable) - based upon the appropriate requirements of Subsection F of 19.15.17.13 NMAC
- ☐ Disposal Facility Name and Permit Number (for liquids, drilling fluids and drill cuttings)
- ☐ Soil Backfill and Cover Design Specifications - based upon the appropriate requirements of Subsection H of 19.15.17.13 NMAC
- ☐ Re-vegetation Plan - based upon the appropriate requirements of Subsection I of 19.15.17.13 NMAC
- ☐ Site Reclamation Plan - based upon the appropriate requirements of Subsection G of 19.15.17.13 NMAC

Waste Removal Closure For Closed-loop Systems That Utilize Above Ground Steel Tanks or Haul-off Bins Only: (19.15.17.13.D NMAC)

Instructions: Please identify the facility or facilities for the disposal of liquids, drilling fluids and drill cuttings. Use attachment if more than two facilities are required.

Disposal Facility Name: _____ Disposal Facility Permit # _____

Disposal Facility Name: _____ Disposal Facility Permit # _____

Will any of the proposed closed-loop system operations and associated activities occur on or in areas that **will not** be used for future service and

☐ Yes (If yes, please provide the information) ☐ No

Required for impacted areas which will not be used for future service and operations.

☐ Soil Backfill and Cover Design Specification - based upon the appropriate requirements of Subsection H of 19.15.17.13 NMAC

☐ Re-vegetation Plan - based upon the appropriate requirements of Subsection I of 19.15.17.13 NMAC

☐ Site Reclamation Plan - based upon the appropriate requirements of Subsection G of 19.15.17.13 NMAC

Siting Criteria (Regarding on-site closure methods only): 19.15.17.10 NMAC

Instructions: Each siting criteria requires a demonstration of compliance in the closure plan. Recommendations of acceptable source material are provided below. Requests regarding changes to certain siting criteria may require administrative approval from the appropriate district office or may be considered an exception which must be submitted to the Santa Fe Environmental Bureau office for consideration of approval. Justifications and/or demonstrations of equivalency are required. Please refer to 19.15.17.10 NMAC for guidance.

Ground water is less than 50 feet below the bottom of the buried waste.

- NM Office of the State Engineer - iWATERS database search; USGS Data obtained from nearby wells

☐ Yes ☐ No

☐ N/A

Ground water is between 50 and 100 feet below the bottom of the buried waste

- NM Office of the State Engineer - iWATERS database search; USGS Data obtained from nearby wells

☐ Yes ☐ No

☐ N/A

Ground water is more than 100 feet below the bottom of the buried waste

- NM Office of the State Engineer - iWATERS database search; USGS Data obtained from nearby wells

☐ Yes ☐ No

☐ N/A

Within 300 feet of a continuously flowing watercourse, or 200 feet of any other significant watercourse or lakebed, sinkhole, or playa lake (measured from the ordinary high-water mark)

- Topographic map, Visual inspection (certification) of the proposed site

☐ Yes ☐ No

Within 300 feet from a permanent residence, school, hospital, institution, or church in existence at the time of initial application.

- Visual inspection (certification) of the proposed site, Aerial photo; satellite image

☐ Yes ☐ No

☐ Yes ☐ No

Within 500 horizontal feet of a private, domestic fresh water well or spring that less than five households use for domestic or stock watering purposes, or within 1000 horizontal feet of any other fresh water well or spring, in existence at the time of the initial application.

- NM Office of the State Engineer - iWATERS database, Visual inspection (certification) of the proposed site

☐ Yes ☐ No

Within incorporated municipal boundaries or within a defined municipal fresh water well field covered under a municipal ordinance adopted pursuant to NMSA 1978, Section 3-27-3, as amended

- Written confirmation or verification from the municipality; Written approval obtained from the municipality

☐ Yes ☐ No

Within 500 feet of a wetland

- US Fish and Wildlife Wetland Identification map, Topographic map, Visual inspection (certification) of the proposed site

☐ Yes ☐ No

Within the area overlying a subsurface mine

- Written confirmation or verification or map from the NM EMNRD-Mining and Mineral Division

☐ Yes ☐ No

Within an unstable area.

- Engineering measures incorporated into the design, NM Bureau of Geology & Mineral Resources; USGS, NM Geological Society; Topographic map

☐ Yes ☐ No

Within a 100-year floodplain.

- FEMA map

☐ Yes ☐ No

On-Site Closure Plan Checklist: (19.15.17.13 NMAC) *Instructions: Each of the following items must be attached to the closure plan. Please indicate, by a check mark in the box, that the documents are attached.*

☐ Siting Criteria Compliance Demonstrations - based upon the appropriate requirements of 19.15.17.10 NMAC

☐ Proof of Surface Owner Notice - based upon the appropriate requirements of Subsection F of 19.15.17.13 NMAC

☐ Construction/Design Plan of Burial Trench (if applicable) based upon the appropriate requirements of 19.15.17.11 NMAC

☐ Construction/Design Plan of Temporary Pit (for in place burial of a drying pad) - based upon the appropriate requirements of 19.15.17.11 NMAC

☐ Protocols and Procedures - based upon the appropriate requirements of 19.15.17.13 NMAC

☐ Confirmation Sampling Plan (if applicable) - based upon the appropriate requirements of Subsection F of 19.15.17.13 NMAC

☐ Waste Material Sampling Plan - based upon the appropriate requirements of Subsection F of 19.15.17.13 NMAC

☐ Disposal Facility Name and Permit Number (for liquids, drilling fluids and drill cuttings or in case on-site closure standards cannot be achieved)

☐ Soil Cover Design - based upon the appropriate requirements of Subsection H of 19.15.17.13 NMAC

☐ Re-vegetation Plan - based upon the appropriate requirements of Subsection I of 19.15.17.13 NMAC

☐ Site Reclamation Plan - based upon the appropriate requirements of Subsection G of 19.15.17.13 NMAC

19

Operator Application Certification:

I hereby certify that the information submitted with this application is true, accurate and complete to the best of my knowledge and belief.

Name (Print): _____ Title: _____
 Signature: _____ Date: _____
 e-mail address: _____ Telephone: _____

20

OCD Approval: ☐ Permit Application (including closure plan) ☒ Closure Plan (only) ☐ OCD Conditions (see attachment)

OCD Representative Signature: Jonathan D. Kelly Approval Date: 7/26/2012
 Title: Compliance Officer OCD Permit Number: _____

21

Closure Report (required within 60 days of closure completion): Subsection K of 19 15 17 13 NMAC

Instructions: Operators are required to obtain an approved closure plan prior to implementing any closure activities and submitting the closure report. The closure report is required to be submitted to the division within 60 days of the completion of the closure activities. Please do not complete this section of the form until an approved closure plan has been obtained and the closure activities have been completed

☒ Closure Completion Date: June 4, 2012

22

Closure Method:

☐ Waste Excavation and Removal ☒ On-site Closure Method ☐ Alternative Closure Method ☐ Waste Removal (Closed-loop systems only)
☐ If different from approved plan, please explain

23

Closure Report Regarding Waste Removal Closure For Closed-loop Systems That Utilize Above Ground Steel Tanks or Haul-off Bins Only:

Instructions: Please identify the facility or facilities for where the liquids, drilling fluids and drill cuttings were disposed. Use attachment if more than two facilities were utilized.

Disposal Facility Name: _____ Disposal Facility Permit Number: _____

Disposal Facility Name: _____ Disposal Facility Permit Number: _____

Were the closed-loop system operations and associated activities performed on or in areas that will not be used for future service and operations?

☐ Yes (If yes, please demonstrate compliance to the items below) ☐ No

Required for impacted areas which will not be used for future service and operations

- ☐ Site Reclamation (Photo Documentation)
☐ Soil Backfilling and Cover Installation
☐ Re-vegetation Application Rates and Seeding Technique

24

Closure Report Attachment Checklist: Instructions: Each of the following items must be attached to the closure report. Please indicate, by a check mark in the box, that the documents are attached.

- ☒ Proof of Closure Notice (surface owner and division)
☒ Proof of Deed Notice (required for on-site closure)
☒ Plot Plan (for on-site closures and temporary pits)
☒ Confirmation Sampling Analytical Results (if applicable)
☐ Waste Material Sampling Analytical Results (if applicable)
☒ Disposal Facility Name and Permit Number
☒ Soil Backfilling and Cover Installation
☒ Re-vegetation Application Rates and Seeding Technique
☒ Site Reclamation (Photo Documentation)

On-site Closure Location Latitude: 36.539976 °N Longitude: 107.750614 °W NAD ☐ 1927 ☒ 1983

25

Operator Closure Certification:

I hereby certify that the information and attachments submitted with this closure report is true, accurate and complete to the best of my knowledge and belief. I also certify that the closure complies with all applicable closure requirements and conditions specified in the approved closure plan

Name (Print): Jamie Goodwin Title: Regulatory Tech.
 Signature: Jamie Goodwin Date: 7/19/12
 e-mail address: jamie.l.goodwin@conocophillips.com Telephone: 505-326-9784

Burlington Resources Oil Gas Company, LP
San Juan Basin
Closure Report

Lease Name: HEURFANITO UNIT 79N
API No.: 30-045-34950

In accordance with Rule 19.15.17.13 NMAC the following information describes the closure of the temporary pit referenced above. All proper documentation regarding closure activities is being included with the C-144. The temporary pit for this location was constructed and location drilled before June 16, 2008 (effective date for Rule 19.15.17). While closure of the temporary pit did fall within the rule some dates for submittals are after the rig release date.

- Details on Capping and Covering, where applicable. **(See report)**
- Plot Plan (Pit Diagram) **(Included as an attachment)**
- Inspection Reports **(Included as an attachment)**
- Sampling Results **(Included as an attachment)**
- C-105 **(Included as an attachment)**
- Copy of Deed Notice will be filed with County Clerk **(Not required on Federal, State, or Tribal land as stated by FAQ dated October 30, 2008)**

General Plan:

1. All free standing liquids will be removed at the start of the pit closure process from the pit and disposed of in a division-approved facility or recycle, reuse or reclaim the liquids in a manner that the appropriate division district office approves.

All recovered liquids were disposed of at Basin Disposal (Permit #NM-01-005) and any sludge or soil required to be removed to facilitate closure was hauled to Envirotech Land Farm (Permit #NM-01-011) and JFJ Landfarm % IEI (Permit #NM-01-0010B).

2. The preferred method of closure for all temporary pits will be on-site burial, assuming that all the criteria listed in sub-section (B) of 19.15.17.13 are met.

The pit was closed using onsite burial.

3. The surface owner shall be notified of BR's closing of the temporary pit as per the approved closure plan using certified mail, return receipt requested.

The closure process notification to the landowner was sent via email. (See Attached)(Well located on Federal Land, certified mail is not required for Federal Land per BLM/OCD MOU.)

4. Within 6 months of the Rig Off status occurring BR will ensure that temporary pits are closed, re-contoured, and reseeded.

The closure plan requirements were met due to rig move off date as noted on C-105.

5. Notice of Closure will be given to the Aztec Division office between 72 hours and one week of closure via email, or verbally. The notification of closure will include the following:
 - i. Operator's name
 - ii. Location by Unit Letter, Section, Township, and Range. Well name and API number.

Notification is attached.

6. Liner of temporary pit shall be removed above "mud level" after stabilization. Removal of liner will consist of manually or mechanically cutting liner at mud level and removing all remaining liner. Care will be taken to remove "All" of the liner i.e., edges of liner entrenched or buried. All excessive liner will be disposed of at a licensed disposal facility.

Liner of temporary pit was removed above "mud level" after stabilization. Removal of the liner consisted of manually cutting liner at mud level and removing all remaining liner. Care was taken to remove "ALL" of the liner i.e., edges of liner entrenched or buried. All excessive liner was disposed of at a licensed disposal facility, (San Juan County Landfill).

7. Pit contents shall be mixed with non-waste containing, earthen material in order to achieve the solidification process. The solidification process will be accomplished using a combination of natural drying and mechanically mixing. Pit contents will be mixed with non-waste, earthen material to a consistency that is deemed a safe and stable. The mixing ratio shall not exceed 3 parts clean soil to 1 part pit contents.

Burlington mixed the Pit contents with non-waste containing, earthen material in order to achieve the solidification process. The solidification process was accomplished by using a combination of natural drying and mechanically mixing. Pit contents were mixed with non-waste, earthen material to a consistency that is deemed as safe and stable. The mixing ratio consisted of approximately 3 parts clean soil to 1 part pit contents.

8. A five point composite sample will be taken of the pit using sampling tools and all samples tested per Subsection B of 19.15.17.13(B)(1)(b). In the event that the criteria are not met, all contents will be handled per Subparagraph (a) of Paragraph (1) of Subsection B of 19.15.17.13 i.e., Dig and haul.

A five point composite sample was taken of the pit using sampling tools and all samples tested per Subsection B of 19.15.17.1 3(B)(1)(b). (Sample results attached).

Components	Tests Method	Limit (mg/Kg)	Results
Benzene	EPA SW-846 8021B or 8260B	0.2	ND ug/kg
BTEX	EPA SW-846 8021B or 8260B	50	2190 ug/kG
TPH	EPA SW-846 418.1	2500	185mg/kg
GRO/DRO	EPA SW-846 8015M	500	55.0 mg/Kg
Chlorides	EPA 300.1	1000/500	210 mg/L

9. Upon completion of solidification and testing standards being passed, the pit area will be backfilled with compacted, non-waste containing, earthen material. A minimum of four feet of cover shall be achieved and the cover shall include one foot of suitable material to establish vegetation at the site, or the background thickness of topsoil, whichever is greater. If standard testing fails BR will dig and haul all contents pursuant to 19.15.17.13.i.a. After doing such, confirmation sampling will be conducted to ensure a release has not occurred.

The pit material passed solidification and testing standards. The pit area was then backfilled with compacted, non-waste containing, earthen material. More than four feet of cover was achieved and the cover included one foot of suitable material to establish vegetation at the site.

10. During the stabilization process if the liner is ripped by equipment the Aztec OCD office will be notified within 48 hours and the liner will be repaired if possible. If the liner can not be repaired then all contents will be excavated and removed.

The integrity of the liner was not damaged in the pit closure process.

11. Dig and Haul Material will be transported to the Envirotech Land Farm located 16 miles south of Bloomfield on Angel Peak Road, CR 7175. Permit # NM010011

Dig and Haul was not required.

12. Re-contouring of location will match fit, shape, line, form and texture of the surrounding. Re-shaping will include drainage control, prevent ponding, and prevent erosion. Natural drainages will be unimpeded and water bars and/or silt traps will be placed in areas where needed to prevent erosion on a large scale. Final re-contour shall have a uniform appearance with smooth surface, fitting the natural landscape.

The pit area was re-contoured to match fit, shape, line, form and texture of the surrounding area. Re-shaping included drainage control, to prevent ponding and erosion. Natural drainages were unimpeded and water bars and/or silt traps were placed in areas where needed to prevent erosion on a large scale. Final re-contour has a uniform appearance with smooth surface, fitting the natural landscape.

13. Notification will be sent to OCD when the reclaimed area is seeded.

Provision 13 was accomplished through complying with BLM seeding requirements as allowed by the BLM/OCD MOU.

14. BR shall seed the disturbed areas the first growing season after the operator closes the pit. Seeding will be accomplished via drilling on the contour whenever practical or by other division-approved methods. BLM or Forest Service stipulated seed mixes will be used on federal lands. Vegetative cover will equal 70% of the native perennial vegetative cover (un-impacted) consisting of at least three native plant species, including at least one grass, but not including noxious weeds, and maintain that cover through two successive growing seasons. Repeat seeding or planting will be continued until successful vegetative growth occurs.

Provision 14 was accomplished through complying with BLM seeding requirements as allowed by the BLM/OCD MOU.

15. The temporary pit will be located with a steel marker, no less than four inches in diameter, cemented in a hole three feet deep in the center of the onsite burial upon the abandonment of all the wells on the pad. The marker will be flush with the ground to allow access of the active well pad and for safety concerns. The marker will include a threaded collar to be used for future abandonment. The top of the marker will contain a welded steel 12" square plate that indicates the onsite burial of the temporary pit. The plate will be easily removable and a four foot tall riser will be threaded into the top of the collar marker and welded around the base with the operator's information at the time of all wells on the pad are abandoned. The operator's information will include the following: Operator Name, Lease Name, Well Name and number, Unit Number, Section, Township, Range and an indicator that the marker is an onsite burial location.

Provision 15 was accomplished by installing a steel marker in the temporary pit, no less than four inches in diameter, cemented in a hole three feet deep in the center of the onsite burial. The marker is flush with the ground to allow access of the active well pad and for safety concerns. The top of the marker contains a welded steel 12" square plate that indicates the onsite burial of the temporary pit. The plate contains the following: Operator Name, Lease Name, Well Name and number, Unit Number, Section, Township, Range and an indicator that the marker is an onsite burial location.

The plate will be easily removable and a four foot tall riser will be threaded into the top of the collar marker and welded around the base with the following operator's information at the time of all wells on the pad are abandoned. The riser will be labeled: BR, BLM, HUERFANITO UNIT 79N, UL-P, Sec. 26, T 27N, R 9W, API # 30-045-34950

Sessions, Tamra D

From: Sessions, Tamra D
Sent: Thursday, May 14, 2009 1:14 PM
To: 'mark_kelly@nm.blm.gov'
Subject: Surface Owner Notification

The following wells will have a temporary pit that will be closed on-site. Please let me know if you have any questions.

Huerfanito Unit 79N

San Juan 20S

San Juan 28-7 Unit 98N

Thank you,

Tamra Sessions
Staff Regulatory Technician
CONOCOPHILLIPS COMPANY / SJBU
505-326-9834
Tamra.D.Sessions@conocophillips.com

DISTRICT I
1825 N. French Dr., Hobbs, N.M. 88240

DISTRICT II
1301 West Grand Avenue, Artesia, N.M. 88210

DISTRICT III
1000 Rio Brazos Rd., Aztec, N.M. 87410

DISTRICT IV
1220 S. St. Francis Dr., Santa Fe, NM 87505

State of New Mexico
Energy, Minerals & Natural Resources Department

OIL CONSERVATION DIVISION
1220 South St. Francis Dr.
Santa Fe, NM 87505

Form C-102
Revised October 12, 2005

Submit to Appropriate District Office
State Lease - 4 Copies
Fee Lease - 3 Copies

☐ AMENDED REPORT

WELL LOCATION AND ACREAGE DEDICATION PLAT

¹ API Number	² Pool Code	³ Pool Name BASIN DAKOTA/BLANCO MESAVERDE
⁴ Property Code	⁵ Property Name HUERFANITO UNIT	⁶ Well Number 79N
⁷ GRID No.	⁸ Operator Name BURLINGTON RESOURCES OIL & GAS COMPANY LP	⁹ Elevation 6309'

¹⁰ Surface Location

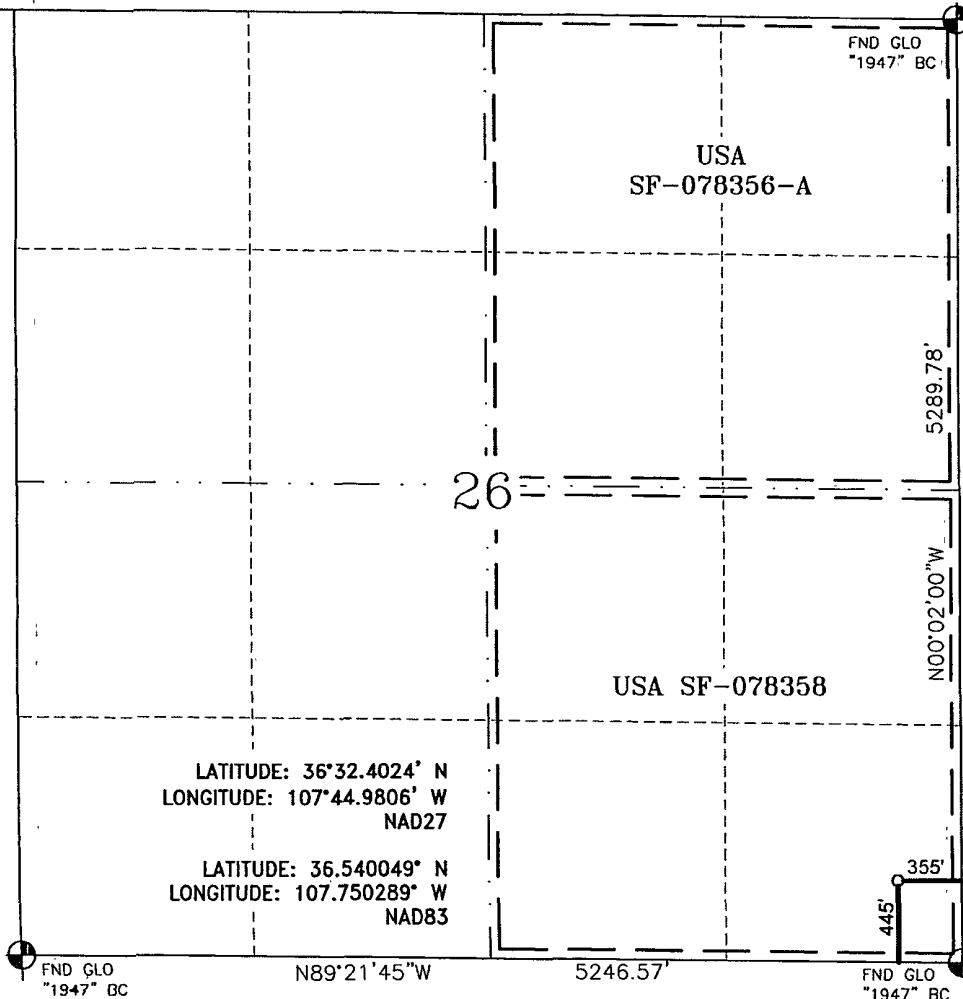
UL or lot no.	Section	Township	Range	Lot Idn	Feet from the	North/South line	Feet from the	East/West line	County
P	26	27-N	9-W		445'	SOUTH	355	EAST	SAN JUAN

¹¹ Bottom Hole Location If Different From Surface

UL or lot no.	Section	Township	Range	Lot Idn	Feet from the	North/South line	Feet from the	East/West line	County
¹² Dedicated Acres DK 320.00 ACRES E/2 MV 320.00 ACRES E/2					¹³ Joint or Infill		¹⁴ Consolidation Code		¹⁵ Order No.

NO ALLOWABLE WILL BE ASSIGNED TO THIS COMPLETION UNTIL ALL INTERESTS HAVE BEEN CONSOLIDATED
OR A NON-STANDARD UNIT HAS BEEN APPROVED BY THE DIVISION

16



17 OPERATOR CERTIFICATION

I hereby certify that the information contained herein is true and complete to the best of my knowledge and belief, and that this organization either owns a working interest or unleased mineral interest in the land including the proposed bottom hole location or has a right to drill this well at this location pursuant to a contract with an owner of such a mineral or a working interest, or to a voluntary pooling agreement or a compulsory pooling order heretofore entered by the division.

Signature

Printed Name

18 SURVEYOR CERTIFICATION

I hereby certify that the well location shown on this plat was plotted from field notes of actual surveys made by me or under my supervision, and that the same is true and correct to the best of my belief.

Date of Survey: 11-7-2008
Signature and Seal of Professional Surveyor:

Signature and Seal of Professional Surveyor:

Signature and Seal of Professional Surveyor:

Signature and Seal of Professional Surveyor:

Signature and Seal of Professional Surveyor:

Signature and Seal of Professional Surveyor:

Signature and Seal of Professional Surveyor:

Signature and Seal of Professional Surveyor:

Signature and Seal of Professional Surveyor:

Signature and Seal of Professional Surveyor:

Signature and Seal of Professional Surveyor:

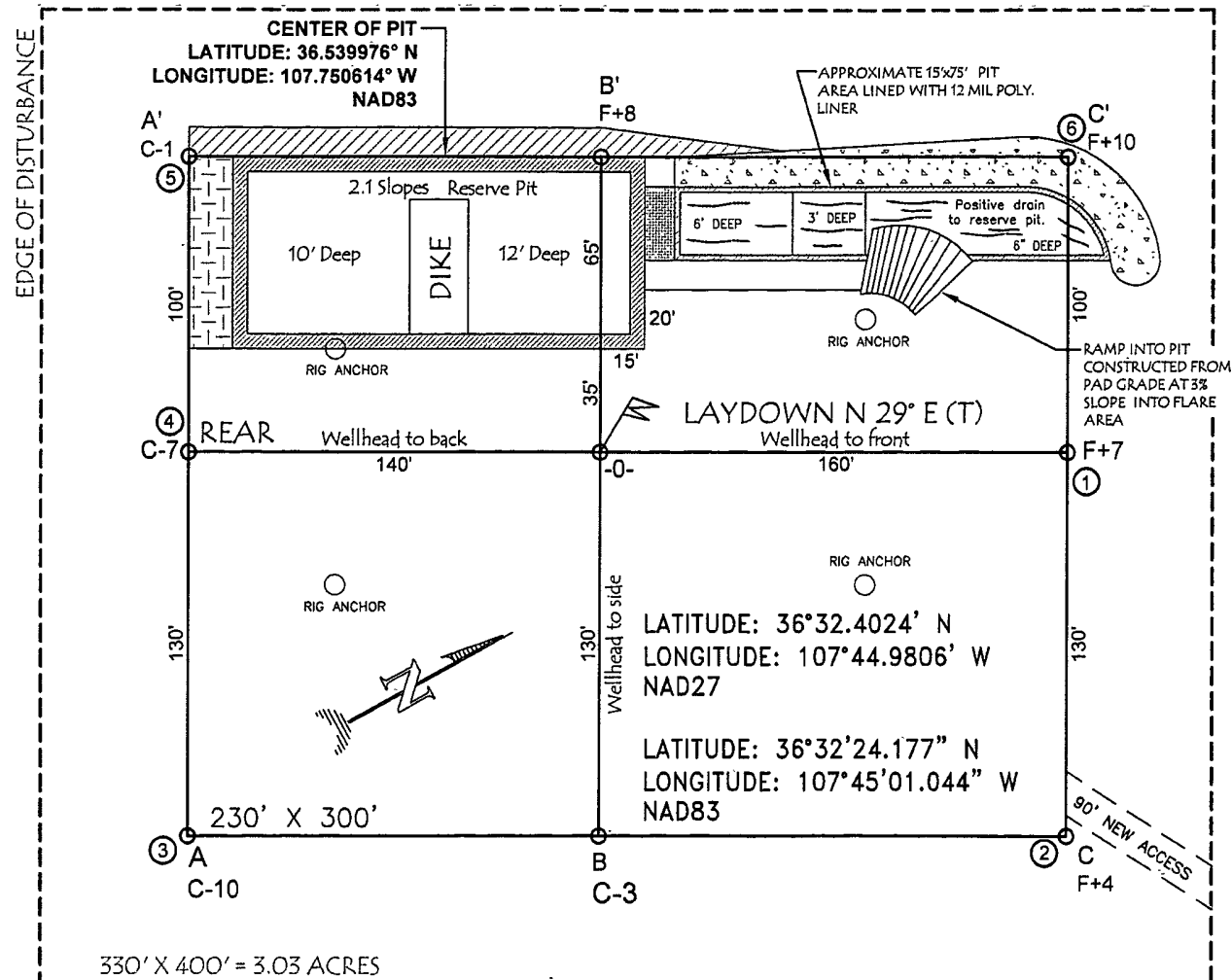
Signature and Seal of Professional Surveyor:

Signature and Seal of Professional Surveyor:

Signature and Seal of Professional Surveyor:

Signature and Seal of Professional Surveyor:

BURLINGTON RESOURCES OIL & GAS COMPANY LP
HUERFANITO UNIT #79N, 445' FSL & 355' FEL
SECTION 26, T-27-N, R-9-W, NMPM, SAN JUAN COUNTY, NM
GROUND ELEVATION: 6309', DATE: AUGUST 28, 2008



NOTES:

1. VECTOR SURVEYS IS NOT LIABLE FOR UNDERGROUND UTILITIES OR PIPELINES. CONTRACTOR SHOULD CALL ONE-CALL FOR LOCATION OF ANY MARKED OR UNMARKED BURIED PIPELINES OR CABLES ON WELL PAD AND OR ACCESS ROAD AT LEAST TWO (2) WORKING DAYS PRIOR TO CONSTRUCTION.
2. RESERVE PIT DIKE: TO BE 8" ABOVE DEEP SIDE (COVERFLOW - 3' WIDE AND 1' ABOVE SHALLOW SIDE).



EPA METHOD 8015 Modified
Nonhalogenated Volatile Organics
Total Petroleum Hydrocarbons

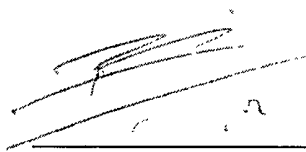
Client:	ConocoPhillips	Project #:	96052-1706
Sample ID:	Back-Ground	Date Reported:	04-23-12
Laboratory Number:	61776	Date Sampled:	04-16-12
Chain of Custody No:	13746	Date Received:	04-16-12
Sample Matrix:	Soil	Date Extracted:	04-18-12
Preservative:	Cool	Date Analyzed:	04-19-12
Condition:	Intact	Analysis Requested:	8015 TPH

Parameter	Concentration (mg/Kg)	Det. Limit (mg/Kg)
Gasoline Range (C5 - C10)	ND	0.2
Diesel Range (C10 - C28)	0.6	0.1
Total Petroleum Hydrocarbons	0.6	

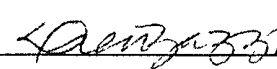
ND - Parameter not detected at the stated detection limit.

References: Method 8015B, Nonhalogenated Volatile Organics, Test Methods for Evaluating Solid Waste, SW-846, USEPA, December 1996.

Comments: Huerfanito #79N



Analyst



Review



EPA METHOD 8015 Modified
Nonhalogenated Volatile Organics
Total Petroleum Hydrocarbons

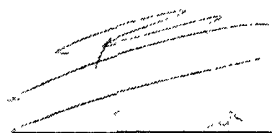
Client:	ConocoPhillips	Project #:	96052-1706
Sample ID:	Reserve Pit	Date Reported:	04-23-12
Laboratory Number:	61777	Date Sampled:	04-16-12
Chain of Custody No:	13746	Date Received:	04-16-12
Sample Matrix:	Soil	Date Extracted:	04-18-12
Preservative:	Cool	Date Analyzed:	04-19-12
Condition:	Intact	Analysis Requested:	8015 TPH

Parameter	Concentration (mg/Kg)	Det. Limit (mg/Kg)
Gasoline Range (C5 - C10)	8.1	0.2
Diesel Range (C10 - C28)	47.5	0.1
Total Petroleum Hydrocarbons	55.5	

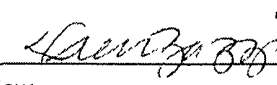
ND - Parameter not detected at the stated detection limit.

References: Method 8015B, Nonhalogenated Volatile Organics, Test Methods for Evaluating Solid Waste, SW-846, USEPA, December 1996.

Comments: **Huerfanito #79N**



Analyst



Review



EPA Method 8015 Modified
Nonhalogenated Volatile Organics
Total Petroleum Hydrocarbons

Quality Assurance Report

Client:	QA/QC	Project #:	N/A
Sample ID:	0419TCAL QA/QC	Date Reported:	04-23-12
Laboratory Number:	61713	Date Sampled:	N/A
Sample Matrix:	Methylene Chloride	Date Received:	N/A
Preservative:	N/A	Date Analyzed:	04-19-12
Condition:	N/A	Analysis Requested:	TPH

	I-Cal Date	I-Cal RF	C-Cal RF	% Difference	Accept. Range
Gasoline Range C5 - C10	04-19-12	1.0230E+03	1.0234E+03	0.04%	0 - 15%
Diesel Range C10 - C28	04-19-12	9.9960E+02	1.0000E+03	0.04%	0 - 15%

Blank Conc. (mg/L - mg/Kg)	Concentration	Detection Limit
Gasoline Range C5 - C10	ND	0.2
Diesel Range C10 - C28	ND	0.1
Total Petroleum Hydrocarbons	ND	

Duplicate Conc. (mg/Kg)	Sample	Duplicate	% Difference	Accept. Range
Gasoline Range C5 - C10	ND	ND	0.0%	0 - 30%
Diesel Range C10 - C28	2.2	1.8	18.2%	0 - 30%

Spike Conc. (mg/Kg)	Sample	Spike Added	Spike Result	% Recovery	Accept. Range
Gasoline Range C5 - C10	ND	250	298	119%	75 - 125%
Diesel Range C10 - C28	2.2	250	282	112%	75 - 125%

ND - Parameter not detected at the stated detection limit.

References: Method 8015B, Nonhalogenated Volatile Organics, Test Methods for Evaluating Solid Ws
SW-846, USEPA, December 1996.

Comments: QA/QC for Samples 61713-61719, 61776-61777 and 61796

Analyst

Review



EPA METHOD 8021
AROMATIC VOLATILE ORGANICS

Client:	ConocoPhillips	Project #:	96052-1706
Sample ID:	Back-Ground	Date Reported:	04-23-12
Laboratory Number:	61776	Date Sampled:	04-13-12
Chain of Custody:	13746	Date Received:	04-13-12
Sample Matrix:	Soil	Date Analyzed:	04-19-12
Preservative:	Cool	Date Extracted:	04-16-12
Condition:	Intact	Analysis Requested:	BTEX
		Dilution:	50

Parameter	Concentration (ug/Kg)	Det. Limit (ug/Kg)
Benzene	ND	10.0
Toluene	12.1	10.0
Ethylbenzene	ND	10.0
p,m-Xylene	14.9	10.0
o-Xylene	10.2	10.0
Total BTEX	37.2	

ND - Parameter not detected at the stated detection limit.

Surrogate Recoveries:	Parameter	Percent Recovery
	Fluorobenzene	91.5 %
	1,4-difluorobenzene	95.2 %
	Bromochlorobenzene	92.0 %

References: Method 5030B, Purge-and-Trap, Test Methods for Evaluating Solid Waste, SW-846, USEPA, December 1996.

Method 8021B, Aromatic Volatile Organics, Test Methods for Evaluating Solid Waste, SW-846 USEPA, December 1996.

Comments: Huerfanito #79N

Analyst

Review



EPA METHOD 8021
AROMATIC VOLATILE ORGANICS

Client:	ConocoPhillips	Project #:	96052-1706
Sample ID:	Reserve Pit	Date Reported:	04-23-12
Laboratory Number:	61777	Date Sampled:	04-13-12
Chain of Custody:	13746	Date Received:	04-13-12
Sample Matrix:	Soil	Date Analyzed:	04-19-12
Preservative:	Cool	Date Extracted:	04-16-12
Condition:	Intact	Analysis Requested:	BTEX
		Dilution:	50

Parameter	Concentration (ug/Kg)	Det. Limit (ug/Kg)
Benzene	ND	10.0
Toluene	121	10.0
Ethylbenzene	152	10.0
p,m-Xylene	1,440	10.0
o-Xylene	481	10.0
Total BTEX	2,190	

ND - Parameter not detected at the stated detection limit.

Surrogate Recoveries:	Parameter	Percent Recovery
	Fluorobenzene	98.4 %
	1,4-difluorobenzene	96.9 %
	Bromochlorobenzene	97.2 %

References: Method 5030B, Purge-and-Trap, Test Methods for Evaluating Solid Waste, SW-846, USEPA, December 1996.

Method 8021B, Aromatic Volatile Organics, Test Methods for Evaluating Solid Waste, SW-846 USEPA, December 1996.

Comments: Huerfanito #79N

Analyst

Review



**EPA METHOD 8021
AROMATIC VOLATILE ORGANICS**

Client:	N/A	Project #:	N/A
Sample ID:	0419BCA2 QA/QC	Date Reported:	04-23-12
Laboratory Number:	61728	Date Sampled:	N/A
Sample Matrix:	Soil	Date Received:	N/A
Preservative:	N/A	Date Analyzed:	04-19-12
Condition:	N/A	Analysis:	BTEX
		Dilution:	50

Calibration and Detection Limits (ug/L)	I-Cal RF	C-Cal RF	%Diff	Blank Conc	Detect Limit
	Accept. Range 0-15%				
Benzene	5.1404E-06	5.1404E-06	0.000	ND	0.2
Toluene	4.2766E-06	4.2766E-06	0.000	ND	0.2
Ethylbenzene	4.4906E-06	4.4906E-06	0.000	ND	0.2
p,m-Xylene	3.3509E-06	3.3509E-06	0.000	ND	0.2
o-Xylene	4.7171E-06	4.7171E-06	0.000	ND	0.2

Duplicate Conc. (ug/Kg)	Sample	Duplicate	%Diff	Accept Range	Detect. Limit
Benzene	ND	ND	0.00	0 - 30%	10
Toluene	ND	ND	0.00	0 - 30%	10
Ethylbenzene	ND	ND	0.00	0 - 30%	10
p,m-Xylene	13.1	13.1	0.00	0 - 30%	10
o-Xylene	ND	ND	0.00	0 - 30%	10

Spike Conc. (ug/Kg)	Sample	Amount Spiked	Spiked Sample	% Recovery	Accept Range
Benzene	ND	2500	2520	101	39 - 150
Toluene	ND	2500	2540	102	46 - 148
Ethylbenzene	ND	2500	2520	101	32 - 160
p,m-Xylene	13.1	5000	5050	101	46 - 148
o-Xylene	ND	2500	2540	102	46 - 148

ND - Parameter not detected at the stated detection limit.

Dilution: Spike and spiked sample concentration represent a dilution proportional to sample dilution.

References: Method 5030B, Purge-and-Trap, Test Methods for Evaluating Solid Waste, SW-846, USEPA, December 1996.
Method 8021B, Aromatic and Halogenated Volatiles by Gas Chromatography Using Photoionization and/or Electrolytic Conductivity Detectors, SW-846, USEPA December 1996.

Comments: QA/QC for Samples 61698-61700, 61728-61729, 61736-61738 and 61776-61777

Analyst

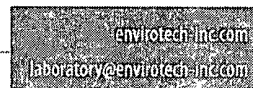
Review

5796 US Highway 64, Farmington, NM 87401

Three Springs • 65 Mercado Street, Suite 115, Durango, CO 81301

Ph (505) 632-0615 Fx (505) 632-1865

Ph (970) 259-0615 Fr (800) 362-1879





EPA METHOD 418.1
TOTAL PETROLEUM HYDROCARBONS

Client:	ConocoPhillips	Project #:	96052-1706
Sample ID:	Back-Ground	Date Reported:	04-25-12
Laboratory Number:	61776	Date Sampled:	04-16-12
Chain of Custody No:	13746	Date Received:	04-16-12
Sample Matrix:	Soil	Date Extracted:	04-25-12
Preservative:	Cool	Date Analyzed:	04-25-12
Condition:	Intact	Analysis Needed:	TPH-418.1

Parameter	Concentration (mg/kg)	Det. Limit (mg/kg)
Total Petroleum Hydrocarbons	111	11.1

ND = Parameter not detected at the stated detection limit.

References: Method 418.1, Petroleum Hydrocarbons, Total Recoverable, Chemical Analysis of Water and Waste, USEPA Storet No. 4551, 1978.

Comments: Huerfanito #79N

Analyst

Review



EPA METHOD 418.1
TOTAL PETROLEUM HYDROCARBONS

Client:	ConocoPhillips	Project #:	96052-1706
Sample ID:	Reserve Pit	Date Reported:	04-25-12
Laboratory Number:	61777	Date Sampled:	04-16-12
Chain of Custody No:	13746	Date Received:	04-16-12
Sample Matrix:	Soil	Date Extracted:	04-25-12
Preservative:	Cool	Date Analyzed:	04-25-12
Condition:	Intact	Analysis Needed:	TPH-418.1

Parameter	Concentration (mg/kg)	Det. Limit (mg/kg)
Total Petroleum Hydrocarbons	185	11.1

ND = Parameter not detected at the stated detection limit.

References: Method 418.1, Petroleum Hydrocarbons, Total Recoverable, Chemical Analysis of Water and Waste, USEPA Storet No. 4551, 1978.

Comments: Huerfanito #79N



Analyst



Review



EPA METHOD 418.1
TOTAL PETROLEUM HYDROCARBONS
QUALITY ASSURANCE REPORT

Client:	QA/QC	Project #:	N/A
Sample ID:	QA/QC	Date Reported:	04-25-12
Laboratory Number:	04-25-TPH.QA/QC 61776	Date Sampled:	N/A
Sample Matrix:	Freon-113	Date Analyzed:	04-25-12
Preservative:	N/A	Date Extracted:	04-25-12
Condition:	N/A	Analysis Needed:	TPH

Calibration	I-Cal Date	C-Cal Date	I-Cal RF	C-Cal RF	% Difference	Accept. Range
	03-20-12	04-25-12	1,850	1,820	1.6%	+/- 10%

Blank Conc. (mg/Kg)	Concentration	Detection Limit
TPH	ND	11.1

Duplicate Conc. (mg/Kg)	Sample	Duplicate	% Difference	Accept. Range
TPH	111	88.7	20.0%	+/- 30%

Spike Conc. (mg/Kg)	Sample	Spike Added	Spike Result	% Recovery	Accept Range
TPH	111	2,000	1,850	87.6%	80 - 120%

ND = Parameter not detected at the stated detection limit.

References: Method 418.1, Petroleum Hydrocarbons, Total Recoverable, Chemical Analysis of Water and Waste, USEPA Storet No. 4551, 1978.

Comments: QA/QC for Samples 61776-61777, 61849-61850, 61853-61857.



Analyst



Review

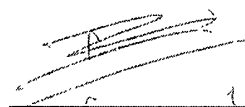
Client:	ConocoPhillips	Project #:	96052-1706
Sample ID:	Back-Ground	Date Reported:	04-19-12
Lab ID#:	61776	Date Sampled:	04-16-12
Sample Matrix:	Soil	Date Received:	04-16-12
Preservative:	Cool	Date Analyzed:	04-19-12
Condition:	Intact	Chain of Custody:	13746

Parameter	Concentration (mg/Kg)
-----------	-----------------------

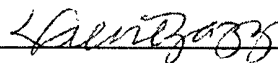
Total Chloride**90**

Reference: U.S.E.P.A., 4500B, "Methods for Chemical Analysis of Water and Wastes", 1983.
Standard Methods For The Examination of Water And Waste Water", 18th ed., 1992.

Comments: **Huerfanito #79N**



Analyst



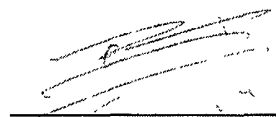
Review

Client:	ConocoPhillips	Project #:	96052-1706
Sample ID:	Reserve Pit	Date Reported:	04-19-12
Lab ID#:	61777	Date Sampled:	04-16-12
Sample Matrix:	Soil	Date Received:	04-16-12
Preservative:	Cool	Date Analyzed:	04-19-12
Condition:	Intact	Chain of Custody:	13746

Parameter	Concentration (mg/Kg)
Total Chloride	210


Reference: U.S.E.P.A., 4500B, "Methods for Chemical Analysis of Water and Wastes", 1983.
Standard Methods For The Examination of Water And Waste Water", 18th ed., 1992.

Comments: **Huerfanito #79N**



Analyst

Review

Submit To Appropriate District Office Two Copies District I 1625 N. French Dr., Hobbs, NM 88240 District II 1301 W. Grand Avenue, Artesia, NM 88210 District III 1000 Rio Brazos Rd., Aztec, NM 87410 District IV 1220 S. St. Francis Dr., Santa Fe, NM 87505	State of New Mexico Energy, Minerals and Natural Resources Oil Conservation Division 1220 South St. Francis Dr. Santa Fe, NM 87505	Form C-105 July 17, 2008								
		1. WELL API NO. 30-045-34950								
		2. Type of Lease <input type="checkbox"/> STATE <input type="checkbox"/> FEE <input checked="" type="checkbox"/> FED/INDIAN								
		3. State Oil & Gas Lease No. SF - 078358								
WELL COMPLETION OR RECOMPLETION REPORT AND LOG										
4. Reason for filing: <input type="checkbox"/> COMPLETION REPORT (Fill in boxes #1 through #31 for State and Fee wells only) <input checked="" type="checkbox"/> C-144 CLOSURE ATTACHMENT (Fill in boxes #1 through #9, #15 Date Rig Released and #32 and/or #33; attach this and the plat to the C-144 closure report in accordance with 19.15.17.13.K NMAC)		5. Lease Name or Unit Agreement Name HUERFANITO UNIT								
		6. Well Number: 79N								
7. Type of Completion. <input checked="" type="checkbox"/> NEW WELL <input type="checkbox"/> WORKOVER <input type="checkbox"/> DEEPENING <input type="checkbox"/> PLUGBACK <input type="checkbox"/> DIFFERENT RESERVOIR <input type="checkbox"/> OTHER										
8. Name of Operator Burlington Resources Oil Gas Company, LP		9. OGRID 14538								
10. Address of Operator PO Box 4298, Farmington, NM 87499		11. Pool name or Wildcat								
12. Location	Unit Ltr	Section	Township	Range	Lot	Feet from the	N/S Line	Feet from the	E/W Line	County
Surface:										
BH:										
13. Date Spudded	14. Date T.D. Reached	15. Date Rig Released 3/20/12		16. Date Completed (Ready to Produce)			17. Elevations (DF and RKB, RT, GR, etc.)			
18. Total Measured Depth of Well		19. Plug Back Measured Depth		20. Was Directional Survey Made?			21. Type Electric and Other Logs Run			
22. Producing Interval(s), of this completion - Top, Bottom, Name										
23. CASING RECORD (Report all strings set in well)										
CASING SIZE		WEIGHT LB / FT		DEPTH SET		HOLE SIZE		CEMENTING RECORD		AMOUNT PULLED
24. LINER RECORD						25. TUBING RECORD				
SIZE	TOP	BOTTOM	SACKS CEMENT	SCREEN		SIZE	DEPTH SET	PACKER SET		
26. Perforation record (interval, size, and number)						27. ACID, SHOT, FRACTURE, CEMENT, SQUEEZE, ETC.				
						DEPTH INTERVAL		AMOUNT AND KIND MATERIAL USED		
28. PRODUCTION										
Date First Production		Production Method (<i>Flowing, gas lift, pumping - Size and type pump</i>)					Well Status (<i>Prod. or Shut-in</i>)			
Date of Test	Hours Tested	Choke Size	Prod'n For Test Period	Oil - Bbl	Gas - MCF	Water - Bbl.	Gas - Oil Ratio			
Flow Tubing Press.	Casing Pressure	Calculated 24-Hour Rate	Oil - Bbl.	Gas - MCF	Water - Bbl.	Oil Gravity - API - (<i>Corr.</i>)				
29. Disposition of Gas (<i>Sold, used for fuel, vented, etc.</i>)							30. Test Witnessed By			
31. List Attachments										
32. If a temporary pit was used at the well, attach a plat with the location of the temporary pit.										
33. If an on-site burial was used at the well, report the exact location of the on-site burial:										
Latitude 36.539976°N Longitude 107.750614°W NAD <input type="checkbox"/> 1927 <input checked="" type="checkbox"/> 1983										
I hereby certify that the information shown on both sides of this form is true and complete to the best of my knowledge and belief										
Signature 			Printed Name Jamie Goodwin		Title: Regulatory Tech.		Date: 9/20/2012			
E-mail Address jamie.l.goodwin@conocophillips.com										



Pit Closure Form:

Date: 6/4/12

Well Name: Huerfano Unit 79W

Footages: 445 FSL 355 FEL Unit Letter: P

Section: 26, T 27 -N, R- 9 -W, County: San Juan State: NM

Contractor Closing Pit: Acc

Construction Inspector: S. McGlasson Date: 6/4/12

Inspector Signature: [Signature]

Revised 11/4/10

Office Use Only:

Subtask _____

DSM _____

Folder _____

Goodwin, Jamie L

From: Payne, Wendy F
Sent: Wednesday, May 23, 2012 12:27 PM
To: (Brandon.Powell@state.nm.us); GRP:SJBU Regulatory; (lpuepke@cimarronsvc.com); Eli (Cimarron) (eliv@cimarronsvc.com); James (Cimarron) (jwood@cimarronsvc.com); Mark Kelly; Randy McKee; Robert Switzer; Sherrie Landon; Bassing, Kendal R.; Dee, Harry P; Eric Smith (sconsulting.eric@gmail.com); Faver Norman; Fred Martinez; Lowe, Terry; McCarty Jr, Chuck R; Payne, Wendy F; Peter, Dan J; Smith, Mike W; Spearman, Bobby E; Steve McGlasson; Tally, Ethel; Becker, Joey W; Bowker, Terry D; Brant Fourr; Frost, Ryan M; Goosey, Paul P; Gordon Chenault; Green, Cary J; GRP:SJBU Production Leads; Hockett, Christy R; Bassing, Kendal R.; Kennedy, Jim R; Leboeuf, Davin J; Lopez, Richard A; Nelson, Garry D; O'Nan, Mike J.; Peace, James T; Poulson, Mark E; Schaaphok, Bill; Smith, Randall O; Spearman, Bobby E; Stamets, Steve A; Thibodeaux, Gordon A; Corey Alfandre; 'isaiah@crossfire-llc.com'; Jerid Cabot (jerid@crossfire-llc.com); Barton, Austin; Blakley, Mac; Coats, Nathan W; Farrell, Juanita R; Maxwell, Mary Alice; McWilliams, Peggy L; Saiz, Kooper K; Seabolt, Elmo F; Thayer, Ashley A; Thompson, Trey
Cc: 'acedragline@yahoo.com'
Subject: Pit Closure Notice: Huerfanito Unit 79N (Area 21 * Run 159)
Importance: High
Attachments: Huerfanito Unit 79N.pdf

ACE Services will move a tractor to the **Huerfanito Unit 79N** to **close the pit only** on Wednesday, May, 30, 2012.
Please contact Steve McGlasson (716-3285) if have questions or need further assistance.



Huerfanito Unit
79N.pdf (223 K...

Burlington Resources Well - Network # 10251110 - Activity Code D260 (pit closure) - PO: Kaitlw
San Juan County, NM

Huerfanito Unit 79N - BLM surface/BLM minerals

Onsite: Roger Herrera 1-28-09

Twin: n/a

445' FSL & 355' FEL

Sec.26, T27N, R9W

Unit Letter " P "

Lease # SF-078358

UA # NM078394 B&C

Latitude: 36° 32' 24" N (NAD 83)

Longitude: 107° 45' 01" W (NAD 83)

Elevation: 6309'

Total Acres Disturbed: 3.09 acres

Access Road: 90.49 feet

API # 30-045-34950

Within City Limits: No

Pit Lined: **YES**

NOTE: Arch Monitoring is NOT required for this location.

Wendy Payne

ConocoPhillips-SJBU

505-326-9533

Wendy.F.Payne@conocophillips.com



Reclamation Form:

Date: 6/27/12

Well Name: Huerfano Unit 79N

Footages: 445 FSL 355 FEL Unit Letter: P

Section: 26, T-27-N, R-9-W, County: San Juan State: NM

Reclamation Contractor: Arco

Reclamation Start Date: 5/30/12

Reclamation Complete Date: 6/7/12

Road Completion Date: 6/11/12

Seeding Date: 6/13/12

****PIT MARKER STATUS (When Required): Picture of Marker set needed**

MARKER PLACED : ~~7/25/12~~ 7/25/12 (DATE)

LATITUDE: 36.54011

LONGITUDE: 107.95047

Pit Manifold removed 5/31/12 (DATE)

Construction Inspector: S. McGlasson Date: 6/27/12

Inspector Signature: [Signature]

Office Use Only: Subtask ☒ DSM ☐ Folder ☐ Pictures ☐

**BURLINGTON
RESOURCES**

HUERFANITO UNIT # 79N

445' FSL 355' FEL

UNIT P SEC 26 T27N R9W

LEASE # SF-078358

API # 30-045-34950 ELEV. 6309'

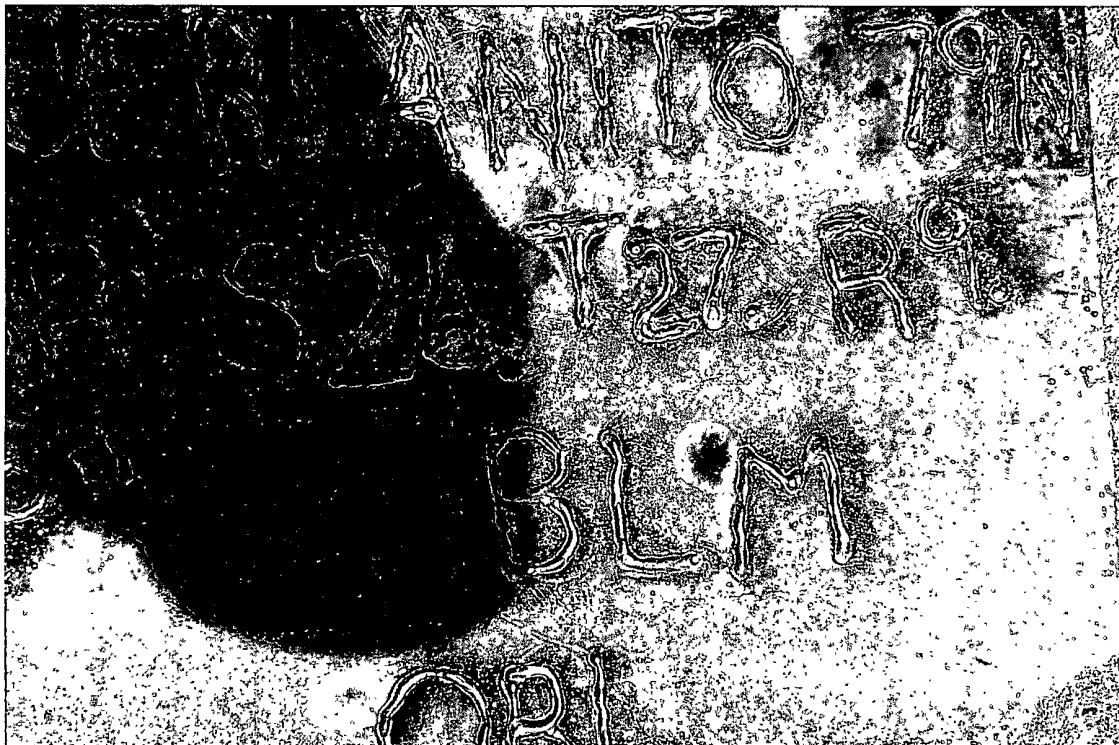
UA # NM078394 B&C

LATITUDE 36° 32 MIN. 24 SEC. N (NAD 83)

LONGITUDE 107° 45 MIN. 01 SEC. W (NAD 83)

SAN JUAN COUNTY, NEW MEXICO

EMERGENCY CONTACT: 1-505-324-5170





WELL NAME: Huerfanito Unit 79N		OPEN PIT INSPECTION FORM								ConocoPhillips	
INSPECTOR		Fred Mtz	Fred Mtz	Fred Mtz	Fred Mtz	Fred Mtz	Fred Mtz	Fred Mtz	Fred Mtz	Fred Mtz	Fred Mtz
DATE		03/05/12	03/12/12	03/19/12	03/26/12	04/02/12	04/16/12	04/23/12	04/30/12	05/15/12	
*Please request for pit extension after 26 weeks		Week 1	Week 2	Week 3	Week 4	Week 5	Week 6	Week 7	Week 8	Week 9	
PIT STATUS		<input type="checkbox"/> Drilled <input type="checkbox"/> Completed <input type="checkbox"/> Clean-Up	<input type="checkbox"/> Drilled <input type="checkbox"/> Completed <input type="checkbox"/> Clean-Up	<input type="checkbox"/> Drilled <input type="checkbox"/> Completed <input type="checkbox"/> Clean-Up	<input type="checkbox"/> Drilled <input type="checkbox"/> Completed <input type="checkbox"/> Clean-Up	<input checked="" type="checkbox"/> Drilled <input type="checkbox"/> Completed <input type="checkbox"/> Clean-Up	<input checked="" type="checkbox"/> Drilled <input type="checkbox"/> Completed <input type="checkbox"/> Clean-Up	<input type="checkbox"/> Drilled <input type="checkbox"/> Completed <input type="checkbox"/> Clean-Up	<input type="checkbox"/> Drilled <input type="checkbox"/> Completed <input type="checkbox"/> Clean-Up	<input checked="" type="checkbox"/> Drilled <input checked="" type="checkbox"/> Completed <input type="checkbox"/> Clean-Up	
LOCATION	Is the location marked with the proper flagging? (Const. Zone, poles, pipelines, etc.)	<input checked="" type="checkbox"/> Yes <input type="checkbox"/> No	<input checked="" type="checkbox"/> Yes <input type="checkbox"/> No	<input type="checkbox"/> Yes <input type="checkbox"/> No	<input checked="" type="checkbox"/> Yes <input type="checkbox"/> No	<input checked="" type="checkbox"/> Yes <input type="checkbox"/> No	<input checked="" type="checkbox"/> Yes <input type="checkbox"/> No	<input type="checkbox"/> Yes <input type="checkbox"/> No	<input type="checkbox"/> Yes <input type="checkbox"/> No	<input checked="" type="checkbox"/> Yes <input type="checkbox"/> No	
	Is the temporary well sign on location and visible from access road?	<input checked="" type="checkbox"/> Yes <input type="checkbox"/> No	<input checked="" type="checkbox"/> Yes <input type="checkbox"/> No	<input type="checkbox"/> Yes <input type="checkbox"/> No	<input checked="" type="checkbox"/> Yes <input type="checkbox"/> No	<input checked="" type="checkbox"/> Yes <input type="checkbox"/> No	<input checked="" type="checkbox"/> Yes <input type="checkbox"/> No	<input type="checkbox"/> Yes <input type="checkbox"/> No	<input type="checkbox"/> Yes <input type="checkbox"/> No	<input checked="" type="checkbox"/> Yes <input type="checkbox"/> No	
ENVIRONMENTAL COMPLIANCE	Is the access road in good driving condition? (deep ruts, bladed)	<input checked="" type="checkbox"/> Yes <input type="checkbox"/> No	<input checked="" type="checkbox"/> Yes <input type="checkbox"/> No	<input type="checkbox"/> Yes <input type="checkbox"/> No	<input checked="" type="checkbox"/> Yes <input type="checkbox"/> No	<input checked="" type="checkbox"/> Yes <input type="checkbox"/> No	<input checked="" type="checkbox"/> Yes <input type="checkbox"/> No	<input type="checkbox"/> Yes <input type="checkbox"/> No	<input type="checkbox"/> Yes <input type="checkbox"/> No	<input type="checkbox"/> Yes <input type="checkbox"/> No	
	Are the culverts free from debris or any object preventing flow?	<input checked="" type="checkbox"/> Yes <input type="checkbox"/> No	<input checked="" type="checkbox"/> Yes <input type="checkbox"/> No	<input type="checkbox"/> Yes <input type="checkbox"/> No	<input checked="" type="checkbox"/> Yes <input type="checkbox"/> No	<input checked="" type="checkbox"/> Yes <input type="checkbox"/> No	<input checked="" type="checkbox"/> Yes <input type="checkbox"/> No	<input type="checkbox"/> Yes <input type="checkbox"/> No	<input type="checkbox"/> Yes <input type="checkbox"/> No	<input type="checkbox"/> Yes <input type="checkbox"/> No	
	Is the top of the location bladed and in good operating condition?	<input checked="" type="checkbox"/> Yes <input type="checkbox"/> No	<input checked="" type="checkbox"/> Yes <input type="checkbox"/> No	<input type="checkbox"/> Yes <input type="checkbox"/> No	<input checked="" type="checkbox"/> Yes <input type="checkbox"/> No	<input checked="" type="checkbox"/> Yes <input type="checkbox"/> No	<input checked="" type="checkbox"/> Yes <input type="checkbox"/> No	<input type="checkbox"/> Yes <input type="checkbox"/> No	<input type="checkbox"/> Yes <input type="checkbox"/> No	<input type="checkbox"/> Yes <input type="checkbox"/> No	
	Is the fence stock-proof? (fences tight, barbed wire, fence clips in place?)	<input checked="" type="checkbox"/> Yes <input type="checkbox"/> No	<input checked="" type="checkbox"/> Yes <input type="checkbox"/> No	<input type="checkbox"/> Yes <input type="checkbox"/> No	<input type="checkbox"/> Yes <input checked="" type="checkbox"/> No	<input checked="" type="checkbox"/> Yes <input type="checkbox"/> No	<input checked="" type="checkbox"/> Yes <input type="checkbox"/> No	<input type="checkbox"/> Yes <input type="checkbox"/> No	<input type="checkbox"/> Yes <input type="checkbox"/> No	<input type="checkbox"/> Yes <input type="checkbox"/> No	
	Is the pit liner in good operating condition? (no tears, up-roofing corners, etc.)	<input checked="" type="checkbox"/> Yes <input type="checkbox"/> No	<input checked="" type="checkbox"/> Yes <input type="checkbox"/> No	<input type="checkbox"/> Yes <input type="checkbox"/> No	<input checked="" type="checkbox"/> Yes <input type="checkbox"/> No	<input checked="" type="checkbox"/> Yes <input type="checkbox"/> No	<input checked="" type="checkbox"/> Yes <input type="checkbox"/> No	<input type="checkbox"/> Yes <input type="checkbox"/> No	<input type="checkbox"/> Yes <input type="checkbox"/> No	<input type="checkbox"/> Yes <input type="checkbox"/> No	
	Is the the location free from trash, oil stains and other materials? (cables, pipe threads, etc.)	<input checked="" type="checkbox"/> Yes <input type="checkbox"/> No	<input checked="" type="checkbox"/> Yes <input type="checkbox"/> No	<input type="checkbox"/> Yes <input type="checkbox"/> No	<input type="checkbox"/> Yes <input checked="" type="checkbox"/> No	<input checked="" type="checkbox"/> Yes <input type="checkbox"/> No	<input checked="" type="checkbox"/> Yes <input type="checkbox"/> No	<input type="checkbox"/> Yes <input type="checkbox"/> No	<input type="checkbox"/> Yes <input type="checkbox"/> No	<input type="checkbox"/> Yes <input type="checkbox"/> No	
	Does the pit contain two feet of free board? (check the water levels)	<input checked="" type="checkbox"/> Yes <input type="checkbox"/> No	<input checked="" type="checkbox"/> Yes <input type="checkbox"/> No	<input type="checkbox"/> Yes <input type="checkbox"/> No	<input checked="" type="checkbox"/> Yes <input type="checkbox"/> No	<input checked="" type="checkbox"/> Yes <input type="checkbox"/> No	<input checked="" type="checkbox"/> Yes <input type="checkbox"/> No	<input type="checkbox"/> Yes <input type="checkbox"/> No	<input type="checkbox"/> Yes <input type="checkbox"/> No	<input type="checkbox"/> Yes <input type="checkbox"/> No	
	Is there any standing water on the blow pit?	<input checked="" type="checkbox"/> Yes <input type="checkbox"/> No	<input checked="" type="checkbox"/> Yes <input type="checkbox"/> No	<input type="checkbox"/> Yes <input type="checkbox"/> No	<input checked="" type="checkbox"/> Yes <input type="checkbox"/> No	<input checked="" type="checkbox"/> Yes <input type="checkbox"/> No	<input checked="" type="checkbox"/> Yes <input type="checkbox"/> No	<input type="checkbox"/> Yes <input type="checkbox"/> No	<input type="checkbox"/> Yes <input type="checkbox"/> No	<input type="checkbox"/> Yes <input type="checkbox"/> No	
	Are the pits free of trash and oil?	<input checked="" type="checkbox"/> Yes <input type="checkbox"/> No	<input checked="" type="checkbox"/> Yes <input type="checkbox"/> No	<input type="checkbox"/> Yes <input type="checkbox"/> No	<input type="checkbox"/> Yes <input checked="" type="checkbox"/> No	<input type="checkbox"/> Yes <input checked="" type="checkbox"/> No	<input checked="" type="checkbox"/> Yes <input type="checkbox"/> No	<input type="checkbox"/> Yes <input type="checkbox"/> No	<input type="checkbox"/> Yes <input type="checkbox"/> No	<input type="checkbox"/> Yes <input type="checkbox"/> No	
	Are there diversion ditches around the pits for natural drainage?	<input checked="" type="checkbox"/> Yes <input type="checkbox"/> No	<input checked="" type="checkbox"/> Yes <input type="checkbox"/> No	<input type="checkbox"/> Yes <input type="checkbox"/> No	<input checked="" type="checkbox"/> Yes <input type="checkbox"/> No	<input checked="" type="checkbox"/> Yes <input type="checkbox"/> No	<input checked="" type="checkbox"/> Yes <input type="checkbox"/> No	<input type="checkbox"/> Yes <input type="checkbox"/> No	<input type="checkbox"/> Yes <input type="checkbox"/> No	<input type="checkbox"/> Yes <input type="checkbox"/> No	
	Is there a Manifold on location?	<input checked="" type="checkbox"/> Yes <input type="checkbox"/> No	<input type="checkbox"/> Yes <input checked="" type="checkbox"/> No	<input type="checkbox"/> Yes <input type="checkbox"/> No	<input checked="" type="checkbox"/> Yes <input type="checkbox"/> No	<input checked="" type="checkbox"/> Yes <input type="checkbox"/> No	<input checked="" type="checkbox"/> Yes <input type="checkbox"/> No	<input type="checkbox"/> Yes <input type="checkbox"/> No	<input type="checkbox"/> Yes <input type="checkbox"/> No	<input type="checkbox"/> Yes <input type="checkbox"/> No	
	Is the Manifold free of leaks? Are the hoses in good condition?	<input checked="" type="checkbox"/> Yes <input type="checkbox"/> No	<input checked="" type="checkbox"/> Yes <input type="checkbox"/> No	<input type="checkbox"/> Yes <input type="checkbox"/> No	<input checked="" type="checkbox"/> Yes <input type="checkbox"/> No	<input checked="" type="checkbox"/> Yes <input type="checkbox"/> No	<input checked="" type="checkbox"/> Yes <input type="checkbox"/> No	<input type="checkbox"/> Yes <input type="checkbox"/> No	<input type="checkbox"/> Yes <input type="checkbox"/> No	<input type="checkbox"/> Yes <input type="checkbox"/> No	
OC	Was the OCD contacted?	<input type="checkbox"/> Yes <input checked="" type="checkbox"/> No	<input type="checkbox"/> Yes <input checked="" type="checkbox"/> No	<input type="checkbox"/> Yes <input type="checkbox"/> No	<input type="checkbox"/> Yes <input checked="" type="checkbox"/> No	<input type="checkbox"/> Yes <input checked="" type="checkbox"/> No	<input type="checkbox"/> Yes <input checked="" type="checkbox"/> No	<input type="checkbox"/> Yes <input type="checkbox"/> No	<input type="checkbox"/> Yes <input type="checkbox"/> No	<input type="checkbox"/> Yes <input type="checkbox"/> No	
	PICTURE TAKEN	<input type="checkbox"/> Yes <input checked="" type="checkbox"/> No	<input type="checkbox"/> Yes <input checked="" type="checkbox"/> No	<input type="checkbox"/> Yes <input type="checkbox"/> No	<input type="checkbox"/> Yes <input checked="" type="checkbox"/> No	<input type="checkbox"/> Yes <input checked="" type="checkbox"/> No	<input type="checkbox"/> Yes <input checked="" type="checkbox"/> No	<input type="checkbox"/> Yes <input type="checkbox"/> No	<input type="checkbox"/> Yes <input type="checkbox"/> No	<input type="checkbox"/> Yes <input type="checkbox"/> No	
	COMMENTS	no repairs	no repairs			pit has debri in it		frack crew on location	Rig on location.		

WELL NAME:									
Huerfanito Unit 79N									
INSPECTOR		Fred Mtz	Fred Mtz						
DATE		05/22/12	05/29/12						
<small>*Please request for pit extension after 26 weeks</small>		Week 10	Week 11	Week 12	Week 13	Week 14	Week 15	Week 16	Week 17
PIT STATUS		<input type="checkbox"/> Drilled <input type="checkbox"/> Completed <input type="checkbox"/> Clean-Up	<input type="checkbox"/> Drilled <input type="checkbox"/> Completed <input type="checkbox"/> Clean-Up	<input type="checkbox"/> Drilled <input type="checkbox"/> Completed <input type="checkbox"/> Clean-Up	<input type="checkbox"/> Drilled <input type="checkbox"/> Completed <input type="checkbox"/> Clean-Up	<input type="checkbox"/> Drilled <input type="checkbox"/> Completed <input type="checkbox"/> Clean-Up	<input type="checkbox"/> Drilled <input type="checkbox"/> Completed <input type="checkbox"/> Clean-Up	<input type="checkbox"/> Drilled <input type="checkbox"/> Completed <input type="checkbox"/> Clean-Up	<input type="checkbox"/> Drilled <input type="checkbox"/> Completed <input type="checkbox"/> Clean-Up
LOCATION	Is the location marked with the proper flagging? (Const. Zone, poles, pipelines, etc.)	<input checked="" type="checkbox"/> Yes <input type="checkbox"/> No	<input checked="" type="checkbox"/> Yes <input type="checkbox"/> No	<input type="checkbox"/> Yes <input type="checkbox"/> No	<input type="checkbox"/> Yes <input type="checkbox"/> No	<input type="checkbox"/> Yes <input type="checkbox"/> No	<input type="checkbox"/> Yes <input type="checkbox"/> No	<input type="checkbox"/> Yes <input type="checkbox"/> No	<input type="checkbox"/> Yes <input type="checkbox"/> No
	Is the temporary well sign on location and visible from access road?	<input checked="" type="checkbox"/> Yes <input type="checkbox"/> No	<input checked="" type="checkbox"/> Yes <input type="checkbox"/> No	<input type="checkbox"/> Yes <input type="checkbox"/> No	<input type="checkbox"/> Yes <input type="checkbox"/> No	<input type="checkbox"/> Yes <input type="checkbox"/> No	<input type="checkbox"/> Yes <input type="checkbox"/> No	<input type="checkbox"/> Yes <input type="checkbox"/> No	<input type="checkbox"/> Yes <input type="checkbox"/> No
ENVIRONMENTAL COMPLIANCE	Is the access road in good driving condition? (deep ruts, bladed)	<input checked="" type="checkbox"/> Yes <input type="checkbox"/> No	<input checked="" type="checkbox"/> Yes <input type="checkbox"/> No	<input type="checkbox"/> Yes <input type="checkbox"/> No	<input type="checkbox"/> Yes <input type="checkbox"/> No	<input type="checkbox"/> Yes <input type="checkbox"/> No	<input type="checkbox"/> Yes <input type="checkbox"/> No	<input type="checkbox"/> Yes <input type="checkbox"/> No	<input type="checkbox"/> Yes <input type="checkbox"/> No
	Are the culverts free from debris or any object preventing flow?	<input checked="" type="checkbox"/> Yes <input type="checkbox"/> No	<input checked="" type="checkbox"/> Yes <input type="checkbox"/> No	<input type="checkbox"/> Yes <input type="checkbox"/> No	<input type="checkbox"/> Yes <input type="checkbox"/> No	<input type="checkbox"/> Yes <input type="checkbox"/> No	<input type="checkbox"/> Yes <input type="checkbox"/> No	<input type="checkbox"/> Yes <input type="checkbox"/> No	<input type="checkbox"/> Yes <input type="checkbox"/> No
	Is the top of the location bladed and in good operating condition?	<input checked="" type="checkbox"/> Yes <input type="checkbox"/> No	<input checked="" type="checkbox"/> Yes <input type="checkbox"/> No	<input type="checkbox"/> Yes <input type="checkbox"/> No	<input type="checkbox"/> Yes <input type="checkbox"/> No	<input type="checkbox"/> Yes <input type="checkbox"/> No	<input type="checkbox"/> Yes <input type="checkbox"/> No	<input type="checkbox"/> Yes <input type="checkbox"/> No	<input type="checkbox"/> Yes <input type="checkbox"/> No
	Is the fence stock-proof? (fences tight, barbed wire, fence clips in place?)	<input checked="" type="checkbox"/> Yes <input type="checkbox"/> No	<input type="checkbox"/> Yes <input checked="" type="checkbox"/> No	<input type="checkbox"/> Yes <input type="checkbox"/> No	<input type="checkbox"/> Yes <input type="checkbox"/> No	<input type="checkbox"/> Yes <input type="checkbox"/> No	<input type="checkbox"/> Yes <input type="checkbox"/> No	<input type="checkbox"/> Yes <input type="checkbox"/> No	<input type="checkbox"/> Yes <input type="checkbox"/> No
	Is the pit liner in good operating condition? (no tears, up-rooting corners, etc.)	<input checked="" type="checkbox"/> Yes <input type="checkbox"/> No	<input checked="" type="checkbox"/> Yes <input type="checkbox"/> No	<input type="checkbox"/> Yes <input type="checkbox"/> No	<input type="checkbox"/> Yes <input type="checkbox"/> No	<input type="checkbox"/> Yes <input type="checkbox"/> No	<input type="checkbox"/> Yes <input type="checkbox"/> No	<input type="checkbox"/> Yes <input type="checkbox"/> No	<input type="checkbox"/> Yes <input type="checkbox"/> No
	Is the the location free from trash, oil stains and other materials? (cables, pipe threads, etc.)	<input checked="" type="checkbox"/> Yes <input type="checkbox"/> No	<input type="checkbox"/> Yes <input checked="" type="checkbox"/> No	<input type="checkbox"/> Yes <input type="checkbox"/> No	<input type="checkbox"/> Yes <input type="checkbox"/> No	<input type="checkbox"/> Yes <input type="checkbox"/> No	<input type="checkbox"/> Yes <input type="checkbox"/> No	<input type="checkbox"/> Yes <input type="checkbox"/> No	<input type="checkbox"/> Yes <input type="checkbox"/> No
	Does the pit contain two feet of free board? (check the water levels)	<input checked="" type="checkbox"/> Yes <input type="checkbox"/> No	<input checked="" type="checkbox"/> Yes <input type="checkbox"/> No	<input type="checkbox"/> Yes <input type="checkbox"/> No	<input type="checkbox"/> Yes <input type="checkbox"/> No	<input type="checkbox"/> Yes <input type="checkbox"/> No	<input type="checkbox"/> Yes <input type="checkbox"/> No	<input type="checkbox"/> Yes <input type="checkbox"/> No	<input type="checkbox"/> Yes <input type="checkbox"/> No
	Is there any standing water on the blow pit?	<input checked="" type="checkbox"/> Yes <input type="checkbox"/> No	<input checked="" type="checkbox"/> Yes <input type="checkbox"/> No	<input type="checkbox"/> Yes <input type="checkbox"/> No	<input type="checkbox"/> Yes <input type="checkbox"/> No	<input type="checkbox"/> Yes <input type="checkbox"/> No	<input type="checkbox"/> Yes <input type="checkbox"/> No	<input type="checkbox"/> Yes <input type="checkbox"/> No	<input type="checkbox"/> Yes <input type="checkbox"/> No
	Are the pits free of trash and oil?	<input checked="" type="checkbox"/> Yes <input type="checkbox"/> No	<input type="checkbox"/> Yes <input checked="" type="checkbox"/> No	<input type="checkbox"/> Yes <input type="checkbox"/> No	<input type="checkbox"/> Yes <input type="checkbox"/> No	<input type="checkbox"/> Yes <input type="checkbox"/> No	<input type="checkbox"/> Yes <input type="checkbox"/> No	<input type="checkbox"/> Yes <input type="checkbox"/> No	<input type="checkbox"/> Yes <input type="checkbox"/> No
	Are there diversion ditches around the pits for natural drainage?	<input checked="" type="checkbox"/> Yes <input type="checkbox"/> No	<input checked="" type="checkbox"/> Yes <input type="checkbox"/> No	<input type="checkbox"/> Yes <input type="checkbox"/> No	<input type="checkbox"/> Yes <input type="checkbox"/> No	<input type="checkbox"/> Yes <input type="checkbox"/> No	<input type="checkbox"/> Yes <input type="checkbox"/> No	<input type="checkbox"/> Yes <input type="checkbox"/> No	<input type="checkbox"/> Yes <input type="checkbox"/> No
	Is there a Manifold on location?	<input checked="" type="checkbox"/> Yes <input type="checkbox"/> No	<input checked="" type="checkbox"/> Yes <input type="checkbox"/> No	<input type="checkbox"/> Yes <input type="checkbox"/> No	<input type="checkbox"/> Yes <input type="checkbox"/> No	<input type="checkbox"/> Yes <input type="checkbox"/> No	<input type="checkbox"/> Yes <input type="checkbox"/> No	<input type="checkbox"/> Yes <input type="checkbox"/> No	<input type="checkbox"/> Yes <input type="checkbox"/> No
Is the Manifold free of leaks? Are the hoses in good condition?	<input checked="" type="checkbox"/> Yes <input type="checkbox"/> No	<input type="checkbox"/> Yes <input type="checkbox"/> No	<input type="checkbox"/> Yes <input type="checkbox"/> No	<input type="checkbox"/> Yes <input type="checkbox"/> No	<input type="checkbox"/> Yes <input type="checkbox"/> No	<input type="checkbox"/> Yes <input type="checkbox"/> No	<input type="checkbox"/> Yes <input type="checkbox"/> No	<input type="checkbox"/> Yes <input type="checkbox"/> No	
OC	Was the OCD contacted?	<input type="checkbox"/> Yes <input checked="" type="checkbox"/> No	<input type="checkbox"/> Yes <input checked="" type="checkbox"/> No	<input type="checkbox"/> Yes <input type="checkbox"/> No	<input type="checkbox"/> Yes <input type="checkbox"/> No	<input type="checkbox"/> Yes <input type="checkbox"/> No	<input type="checkbox"/> Yes <input type="checkbox"/> No	<input type="checkbox"/> Yes <input type="checkbox"/> No	<input type="checkbox"/> Yes <input type="checkbox"/> No
	PICTURE TAKEN	<input type="checkbox"/> Yes <input checked="" type="checkbox"/> No	<input type="checkbox"/> Yes <input checked="" type="checkbox"/> No	<input type="checkbox"/> Yes <input type="checkbox"/> No	<input type="checkbox"/> Yes <input type="checkbox"/> No	<input type="checkbox"/> Yes <input type="checkbox"/> No	<input type="checkbox"/> Yes <input type="checkbox"/> No	<input type="checkbox"/> Yes <input type="checkbox"/> No	<input type="checkbox"/> Yes <input type="checkbox"/> No
	COMMENTS	No ditches.	Debris in pit fence loose Facility is being set.						