

RECEIVED

AUG 15 2012

Farmington Field Office  
Bureau of Land ManagementUNITED STATES  
DEPARTMENT OF THE INTERIOR  
BUREAU OF LAND MANAGEMENTFORM APPROVED  
OMB No 1004-0137  
Expires July 31, 2010

5 Lease Serial No.

SF-076958

6 If Indian, Allottee or Tribe Name

Do not use this form for proposals to drill or to re-enter an abandoned well. Use Form 3160-3 (APD) for such proposals.

SUBMIT IN TRIPLICATE - Other instructions on page 2

1. Type of Well

☐

Oil Well

☒

Gas Well

☐

Other

2. Name of Operator

Burlington Resources Oil &amp; Gas Company LP

3a. Address

PO Box 4289, Farmington, NM 87499

3b. Phone No (include area code)

(505) 326-9700

7 If Unit of CA/Agreement, Name and/or No

8 Well Name and No

Hare 24

9 API Well No

30-045-25989

4. Location of Well (Footage, Sec, T, R, M., or Survey Description)

Surface

Unit F (SENW), 1450' FNL &amp; 1830' FWL, Sec. 15, T29N, R10W

11. Country or Parish, State

San Juan

New Mexico

12. CHECK THE APPROPRIATE BOX(ES) TO INDICATE NATURE OF NOTICE, REPORT OR OTHER DATA

## TYPE OF SUBMISSION

☒ Notice of Intent☐ Subsequent Report☐ Final Abandonment Notice

## TYPE OF ACTION

☐ Acidize☐ Alter Casing☐ Casing Repair☐ Change Plans☐ Convert to Injection☐ Deepen☐ Fracture Treat☐ New Construction☒ Plug and Abandon☐ Plug Back☐ Production (Start/Resume)☐ Reclamation☐ Recomplete☐ Temporarily Abandon☐ Water Disposal☐ Water Shut-Off☐ Well Integrity☐ Other

13 Describe Proposed or Completed Operation Clearly state all pertinent details, including estimated starting date of any proposed work and approximate duration thereof. If the proposal is to deepen directionally or recompleat horizontally, give subsurface locations and measured and true vertical depths of all pertinent markers and zones. Attach the bond under which the work will be performed or provide the Bond No on file with BLM/BIA. Required subsequent reports must be filed within 30 days following completion of the involved operations. If the operation results in a multiple completion or recompleat in a new interval, a Form 3160-4 must be filed once Testing has been completed. Final Abandonment Notices must be filed only after all requirements, including reclamation, have been completed and the operator has determined that the site is ready for final inspection.)

Burlington Resources requests permission to P&A the subject well per the attached procedure, current and proposed wellbore schematics.

Notify NMOCD 24 hrs  
prior to beginning  
operations

RCVD AUG 20 '12  
OIL CONS. DIV.  
DIST. 3

14. I hereby certify that the foregoing is true and correct Name (Printed/Typed)

Dollie L. Busse

Title Staff Regulatory Technician

Signature

Date

8/15/12

THIS SPACE FOR FEDERAL OR STATE OFFICE USE

Approved by

Original Signed: Stephen Mason

Title

Date

AUG 17 2012

Conditions of approval, if any, are attached. Approval of this notice does not warrant or certify that the applicant holds legal or equitable title to those rights in the subject lease which would entitle the applicant to conduct operations thereon.

Office

Title 18 U.S.C. Section 1001 and Title 43 U.S.C. Section 1212, make it a crime for any person knowingly and willfully to make to any department or agency of the United States any false, fictitious or fraudulent statements or representations as to any matter within its jurisdiction.

(Instruction on page 2)

NMOCD

# ConocoPhillips

## HARE 24 Expense - P&A

Lat 36° 43' 46.524" N

Long 107° 52' 28.884" W

### PROCEDURE

**This project requires a NMOCD C-144 CLEZ Closed-Loop System Permit for the use of an A-Plus steel tank to handle waste fluids circulated from the well and cement wash up.**

1. Hold pre-job safety meeting. Comply with all NMOCD, BLM, and COPC safety and environmental regulations. Test rig anchors prior to moving in rig.
2. MIRU work over rig. Check casing and bradenhead pressures and record them in Wellview.
3. When an existing primary valve (i.e. casing valve) is to be used, the existing piping should be removed and replaced with the appropriate piping for the intended operation.
4. RU blow lines from casing valves and begin blowing down casing pressure. Kill well with water as necessary.
5. ND wellhead and NU BOPE. Pressure and function test BOP.
6. Round trip casing scraper through just above the top perforation.

**All cement volumes use 100% excess outside pipe and 50' excess inside pipe. The stabilizing wellbore fluid will be 8.3 ppg, sufficient to balance all exposed formation pressures. All cement will be ASTM Type II mixed at 15.6 ppg with a 1.18 cf/sk yield.**

#### **7. Plug 1 (Chacra Perforations and Top, 3080-3189', 5 Sacks Class B Cement)**

Pick up work string. TIH and set a 2 7/8" cement retainer at 3189'. Load hole with water and circulate well clean. Pressure test tubing to 1000#. Pressure test casing to 800#. TOOH with tubing. If the casing does not test, then spot or tag subsequent plugs as appropriate. Mix 5 sxs Class B cement and spot inside the casing above the cement retainer to isolate the Chacra perforations and tops. PUH.

#### **8. Plug 2 (Pictured Cliffs Top, 2080-2180', 5 Sacks Class B Cement)**

Mix 5 sxs of Class B cement and spot a balanced plug to cover the Pictured Cliffs formation top. PUH.

~~1865~~ 1765

#### **9. Plug 3 (Fruitland Top, ~~1545-1645~~, 5 Sacks Class B Cement)**

Mix 5 sxs of Class B cement and spot a balanced plug to cover the Fruitland formation top. PUH.

#### **10. Plug 4 (Ojo Alamo & Kirtland Tops, 840-1110', 9 Sacks Class B Cement)**

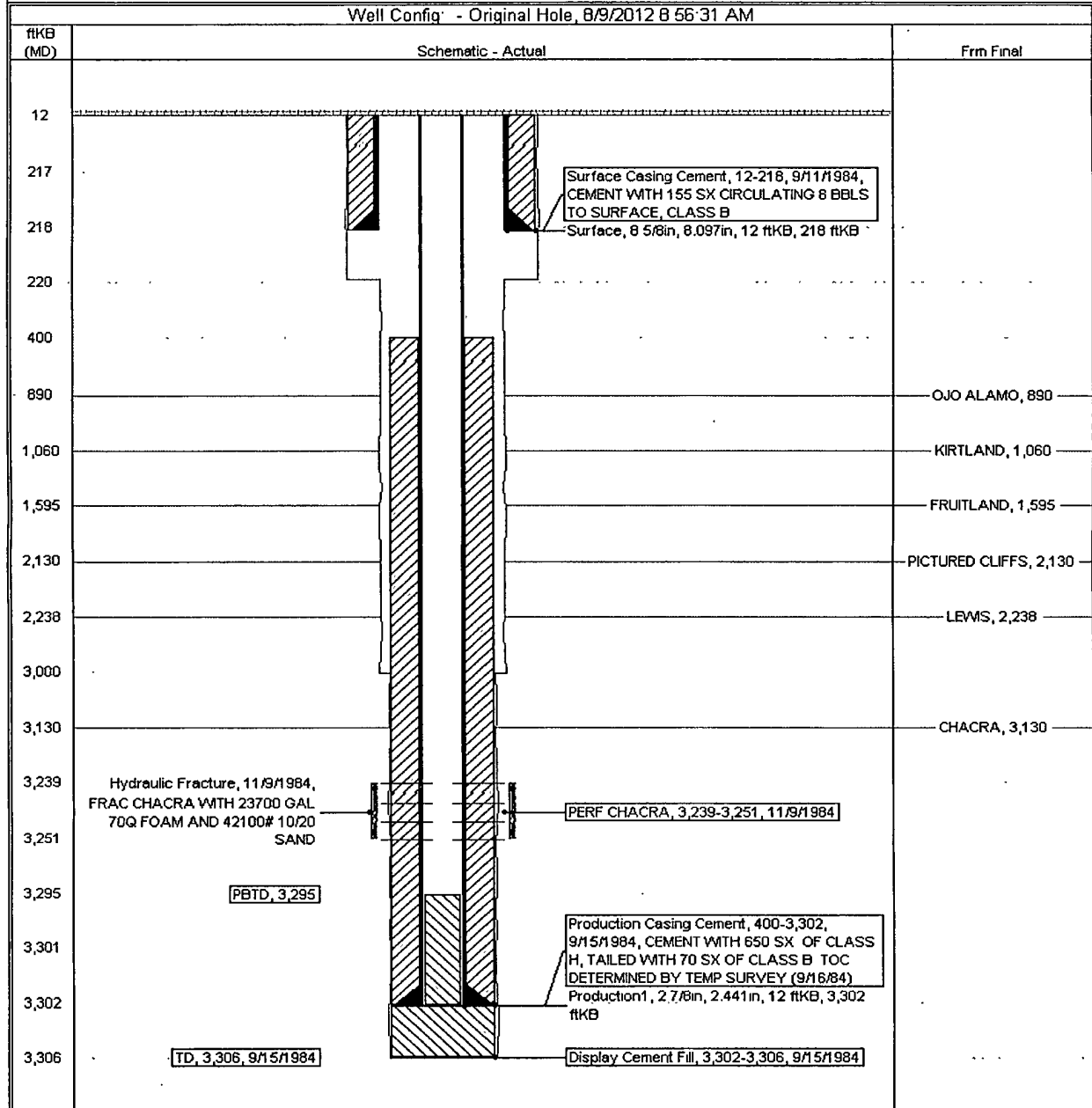
Mix 9 sxs of Class B cement and spot a balanced plug to cover the Ojo Alamo and Kirtland formation tops. TOOH and LD tubing.

#### **11. Plug 5 (Surface Shoe, 0-268', 105 Sacks Class B Cement)**

Perforate 3 squeeze holes at 268'. Establish circulation out bradenhead with water and circulate the BH annulus clean. Mix 105 sxs Class B cement and pump down 2 7/8" casing to circulate good cement out bradenhead. TOOH and LD tubing. Shut in well and WOC.

12. Nipple down BOP and cut off casing below the casing flange. Install P&A marker with cement to comply with regulations. Rig down, move off location, and cut off anchors. Restore location per BLM stipulations.

District NORTH	Field Name OTERO (CHACRA) GAS	API / UWI 3004525989	County SAN JUAN	State/Province NEW MEXICO	Edit
Original Spud Date 9/11/1984	Surface Legal Location NMPM,015-029N-010W	East/West Distance (ft) 0.00	East/West Reference	North/South Distance (ft) 0.00	North/South Reference



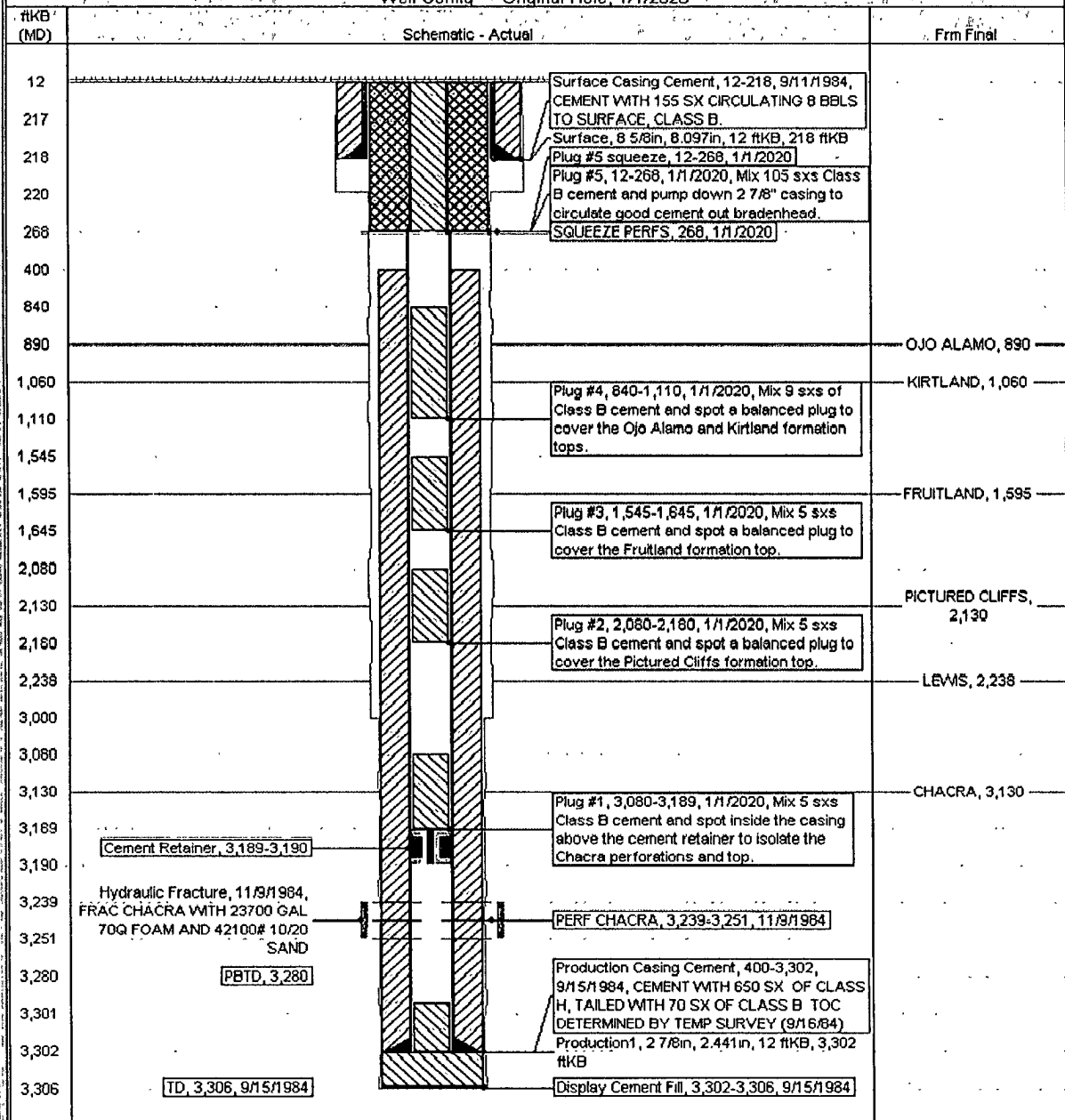
ConocoPhillips

Well Name: HARE #24

Schematic

API Unit	Surface Legal Location	Field Name	License No.	State/Province	Well Configuration Type	Edit
3004525989	NMPM_015-029N-010VV	OTERO (CHACRA) GAS		NEW MEXICO		
Grid Elevation (ft)	Original IRT Elevation (ft)	IS-Graded DB Elevation (ft)	IS-Casing Flange DB Elevation (ft)	IS-Tubing Hanger DB Elevation (ft)		
5,765.00	5,777.00	12.00				

Well Config - Original Hole, 1/1/2020



**UNITED STATES DEPARTMENT OF THE INTERIOR  
BUREAU OF LAND MANAGEMENT  
FARMINGTON DISTRICT OFFICE  
6251 COLLEGE BLVD.  
FARMINGTON, NEW MEXICO 87402**

Attachment to notice of  
Intention to Abandon:

Re: Permanent Abandonment  
Well: 24 Hare

**CONDITIONS OF APPROVAL**

1. Plugging operations authorized are subject to the attached "General Requirements for Permanent Abandonment of Wells on Federal and Indian Lease."
2. Farmington Office is to be notified at least 24 hours before the plugging operations commence (505) 564-7750.
3. The following modifications to your plugging program are to be made:
  - a) Place the Fruitland plug from 1865' – 1765'.
  - b) You are required to have H2S monitoring equipment and personnel on location during plugging operations.

You are also required to place cement excesses per 4.2 and 4.4 of the attached General Requirements.

Office Hours: 7:45 a.m. to 4:30 p.m.