

Submit 3 Copies To Appropriate District
Office
District I
1625 N. French Dr., Hobbs, NM 88240
District II
1301 W. Grand Ave., Artesia, NM 88210
District III
1000 Rio Brazos Rd., Aztec, NM 87410
District IV
1220 S. St. Francis Dr., Santa Fe, NM
87505

State of New Mexico
Energy, Minerals and Natural Resources

Form C-103
Jun 19, 2008

OIL CONSERVATION DIVISION
1220 South St. Francis Dr.
Santa Fe, NM 87505

WELL API NO. 30-039-07729
5. Indicate Type of Lease STATE <input checked="" type="checkbox"/> FEE <input type="checkbox"/>
6. State Oil & Gas Lease No. B-10037-59
7. Lease Name or Unit Agreement Name San Juan 30-6 Unit
8. Well Number 47
9. OGRID Number 14538
10. Pool name or Wildcat Blanco Mesaverde

SUNDRY NOTICES AND REPORTS ON WELLS
(DO NOT USE THIS FORM FOR PROPOSALS TO DRILL OR TO DEEPEN OR PLUG BACK TO A
DIFFERENT RESERVOIR. USE "APPLICATION FOR PERMIT" (FORM C-101) FOR SUCH
PROPOSALS.)

1. Type of Well: Oil Well ☐ Gas Well ☒ Other

2. Name of Operator

Burlington Resources Oil Gas Company LP

3. Address of Operator

P.O. Box 4289, Farmington, NM 87499-4289

4. Well Location

Unit Letter **H** : **1800** feet from the **North** line and **840** feet from the **East** line

Section **32** Township **30N** Range **7W** NMPM **Rio Arriba County**

11. Elevation (Show whether DR, RKB, RT, GR, etc.)
6211' GR

12. Check Appropriate Box to Indicate Nature of Notice, Report or Other Data

NOTICE OF INTENTION TO:

PERFORM REMEDIAL WORK ☐ PLUG AND ABANDON ☒
TEMPORARILY ABANDON ☐ CHANGE PLANS ☐
PULL OR ALTER CASING ☐ MULTIPLE COMPL ☐
DOWNHOLE COMMINGLE ☐

OTHER: ☐

SUBSEQUENT REPORT OF:

REMEDIAL WORK ☐ ALTERING CASING ☐
COMMENCE DRILLING OPNS. ☐ P AND A ☐
CASING/CEMENT JOB ☐

OTHER: ☐

13. Describe proposed or completed operations. (Clearly state all pertinent details, and give pertinent dates, including estimated date of starting any proposed work). SEE RULE 1103. For Multiple Completions: Attach wellbore diagram of proposed completion or recompletion.

Burlington Resources requests permission to P&A the subject well per the attached procedure, current and proposed wellbore schematics.

Notify NMOCD 24 hrs
prior to beginning
operations

RCVD SEP 5 '12
OIL CONS. DIV.
DIST. 3

Spud Date:

Rig Released Date:

I hereby certify that the information above is true and complete to the best of my knowledge and belief.

SIGNATURE  TITLE Staff Regulatory Technician DATE 9/4/12

Type or print name Dollie L. Busse E-mail address: dollie.l.busse@conocophillips.com PHONE: 505-324-6104

For State Use Only

APPROVED BY:  TITLE Deputy Oil & Gas Inspector,
District #3 DATE 9/11/12

Conditions of Approval (if any):

Av

ConocoPhillips
SAN JUAN 30-6 UNIT 47
Expense - P&A

Lat 36° 46' 17.004" N

Long 107° 35' 15.756" W

PROCEDURE

This project requires a NMOCD C-144 CLEZ Closed-Loop System Permit for the use of an A-Plus steel tank to handle waste fluids circulated from the well and cement wash up.

1. Hold pre-job safety meeting. Comply with all NMOCD, BLM, and COPC safety and environmental regulations. Test rig anchors prior to moving in rig.
2. MIRU work over rig. Check casing, tubing, and bradenhead pressures and record them in Wellview.
3. When an existing primary valve (i.e. casing valve) is to be used, the existing piping should be removed and replaced with the appropriate piping for the intended operation.
4. RU blow lines from casing valves and begin blowing down casing pressure. Kill well with water, as necessary, and at least pump tubing capacity of water down tubing.
5. ND wellhead and NU BOPE. Pressure and function test BOP. PU and remove tubing hanger.

*** Top of fish @ 4720'. The 2-3/8" tubing was cut at 4720'.

Round trip casing scraper to top of fish or as deep as possible.

All cement volumes use 100% excess outside pipe and 50' excess inside pipe. The stabilizing wellbore fluid will be 8.3 ppg, sufficient to balance all exposed formation pressures. All cement will be ASTM Type II mixed at 15.6 ppg with a 1.18 cf/sk yield.

7. Plug 1 (Top of Fish, Intermediate Shoe, Mesa Verde formation and Open Hole, 4500-4600', 29 Sacks Class B Cement)

TIH with CR for 7", 23#, J-55 casing and set at 4600'. Pressure test tubing to 1,000# and casing to 800#. Mix 29 sx Class B cement and spot a plug inside the casing above CR to isolate the top of fish, intermediate shoe, Mesa Verde formation and open hole. PUH.

8. Plug 2 (Chacra formation, 4098-4198', 29 Sacks Class B Cement)

Mix 29 sx Class B cement and spot a cement plug inside casing to isolate the Chacra formation top. PUH.

9. Plug 3 (Fruitland and Pictured Cliffs formations, 2557-3013', 95 Sacks Class B Cement)

Mix 95 sx Class B cement and spot a cement plug inside the casing to isolate the Fruitland and Pictured Cliffs formations. POOH.

10. Plug 4 (Ojo Alamo and Kirtland formations, 1935-2189', 122 Sacks Class B Cement)

Perforate 3 HSC holes at 2189'. Set CR at 2139'. TIH with tubing and sting into CR. Establish injection rate into squeeze holes. Mix 122 sx Class B cement and squeeze 65 sx into the HSC holes and leave 57 sx inside the casing to isolate the Ojo Alamo and Kirtland formation tops. POOH.

11. Plug 5 (Nacimiento formation, 590-690', 54 Sacks Class B Cement)

Perforate 3 HSC holes at 690'. Set CR at 640'. TIH with tubing and sting into CR. Establish injection rate into squeeze holes. Mix 54 sx Class B cement and squeeze 25 sx into the HSC holes and leave 29 sx inside the casing to isolate the Nacimiento formation top. POOH.

12. Plug 6 (Surface Shoe, 0-213', 93 Sacks Class B Cement)

Perforate 3 HSC holes at 213'. Establish circulation out bradenhead with water and circulate BH annulus clean. Mix 93 sx Class B cement and pump down production casing to circulate good cement out bradenhead. Shut in well and WOC.

13. Nipple down BOP and cut off casing below the casing flange. Install P&A marker with cement to comply with regulations. Rig down, move off location, cut off anchors, and restore location.

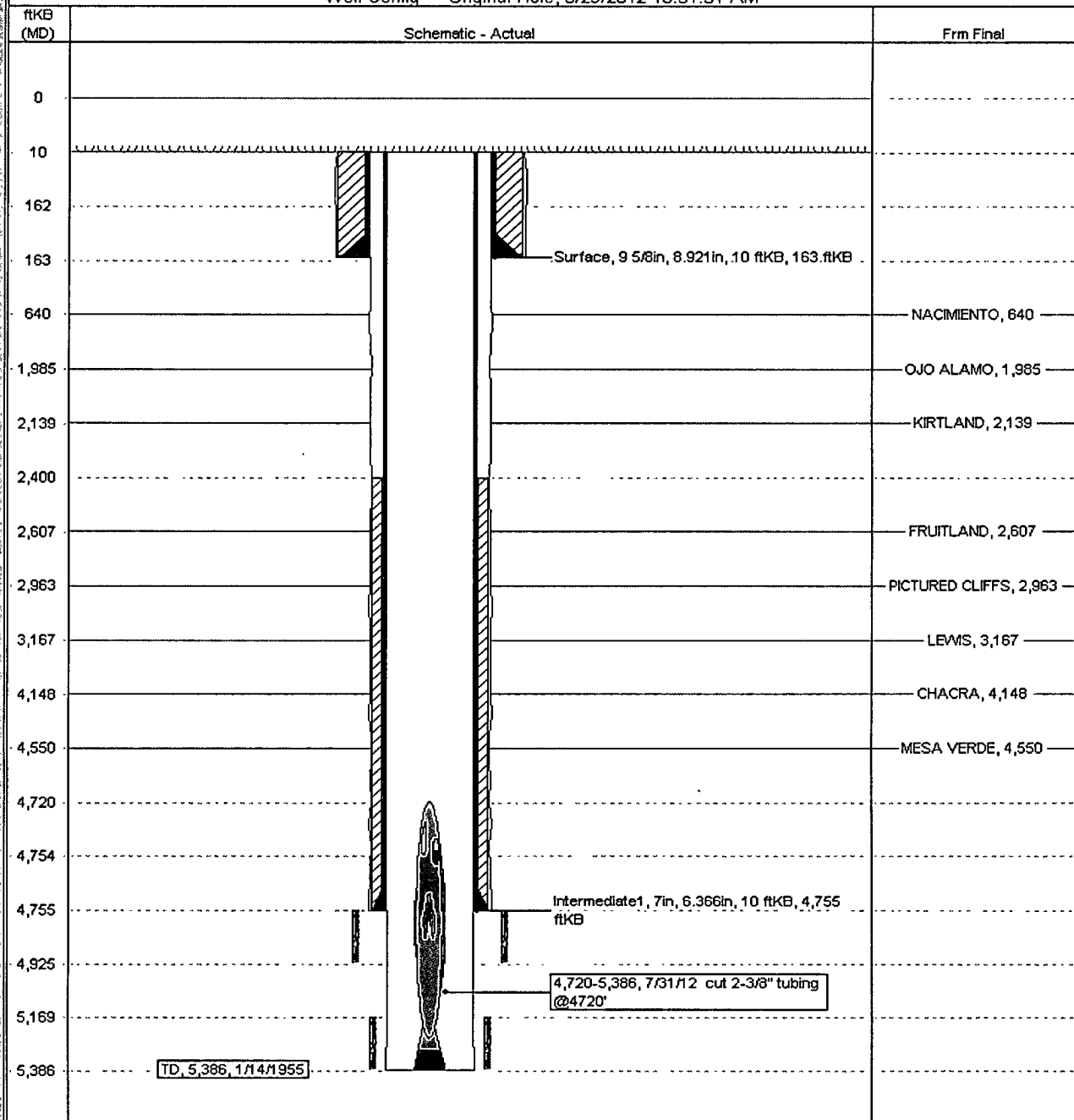
Current Schematic - Version 1

ConocoPhillips

Well Name: SAN JUAN 30-6 UNIT #47

API/UGI 3003907729	Surface Legal Location NMPM,032-030N-007W	Field Name SUNNYSIDE MEADOWS (PREPARED)	License No.	State/Province NEW MEXICO	Well Configuration Type Edit
Ground Elevation (ft) 6,211.00	Original KB/RT Elevation (ft) 6,221.00	KB - Ground Elevation (ft) 10'00	KB - Casing/Elevation (ft) 6,221'00	KB - Tubing/Hanger/Elevation (ft) 6,221'00	

Well Config - Original Hole, 8/29/2012 10:51:31 AM



Proposed Schematic

ConocoPhillips

Well Name: SAN JUAN 30'G UNIT #17

API# JAN 3003907729	Surface Legals Loc#001 NMPM 032-030N-007W	Field Name FRANK'S NATURAL GAS OPERATES	License No	State/Province NEW MEX CO	Well Configuration Type Edit
Ground Elevation (ft) 6,211.00	Original B/T Elevation (ft) 6,221.00	Well Depth (ft) 10100	Well Casing Depth (ft) 6,221.00	Well Casing Depth (ft) 6,221.00	Well Casing Depth (ft) 6,221.00

Well Config: - Original Hole, 1/1/2020

TKB (MD)	From/To	Schematic - Actual
0		
10		
162		
163	Surface, 9 5/8in, 6.921in, 10 ftKB, 163 ftKB	Surface Casing Cement, 10-163, 12/22/954, Cemented w/ 125 sx regular. Circ to surface.
213	SQUEEZE PERFS, 213, 1/1/2020	Plug #6, 10-213, 1/1/2020, Mix 93 sx Class B cement and pump down production casing to circulate good cement out breadhead.
590		
640	NACIMIENTO, 640	
641	Cement Retainer, 640-641	Plug #5, 590-630, 1/1/2020
650	SQUEEZE PERFS, 650, 1/1/2020	Plug #5, 590-630, 1/1/2020, Mix 54 sx Class B cement and squeeze 25 sx behind casing and leave 29 sx inside casing to isolate the Nacimiento formation top.
1,935		
1,935	OJO ALAMO, 1,985	
2,139	KIRTLAND, 2,139	
2,140	Cement Retainer, 2,139-2,140	Plug #4, 1,935-2,189, 1/1/2020
2,189	SQUEEZE PERFS, 2,189, 1/1/2020	Plug #4, 1,935-2,189, 1/1/2020, Mix 122 sx Class B cement and squeeze 65 sx behind casing and leave 57 sx inside casing to isolate the Ojo Alamo and Kirtland formation tops.
2,400		
2,557		
2,607	FRUITLAND, 2,607	
2,953	PICTURED CLIFFS, 2,963	
3,013		Plug #3, 2,557-3,013, 1/1/2020, Mix 95 sx Class B cement and spot a cement plug inside the casing to isolate the Fruitland and Pictured Cliffs formation tops.
3,157	LEWIS, 3,187	
4,038		
4,148	CHACPA, 4,148	
4,138		Plug #2, 4,098-4,198, 1/1/2020, Mix 29 sx Class B cement and spot a cement plug inside casing to isolate the Chacra formation top.
4,500		
4,550	MESA VERDE, 4,550	
4,600	Cement Retainer, 4,600-4,601	Plug #1, 4,500-4,600, 1/1/2020, Mix 29 sx Class B cement and spot a plug inside the casing above CR to isolate the top of fish, intermediate shoe, Mesaverde formation and open hole.
4,601		
4,720		
4,754		
4,755	Intermediate 1, 7in, 6.366in, 10 ftKB, 4,755 ftKB	Intermediate Casing Cement, 2,400-4,755, 1/9/955, Cemented w/ 500 sxs, 250 sx poz mix, and 250 sx regular. TOC @ 2400' per TS 1/9/55 (no TS in file)
4,925	Fish, 4,720-5,386, 7/31/12 cut 2-3/8" tubing @ 4720'	
5,139		
5,396	ID, 5,386, 1/14/055	