

Submit 1 Copy To Appropriate District Office
District I - (575) 393-6161
1625 N. French Dr., Hobbs, NM 88240
District II - (575) 748-1283
811 S. First St., Artesia, NM 88210
District III - (505) 334-6178
1000 Rio Brazos Rd., Aztec, NM 87410
District IV - (505) 476-3460
1220 S. St. Francis Dr., Santa Fe, NM 87505

State of New Mexico
Energy, Minerals and Natural Resources

Form C-103
Revised August 1, 2011

OIL CONSERVATION DIVISION
1220 South St. Francis Dr.
Santa Fe, NM 87505

WELL API NO. 30-045-30540
5. Indicate Type of Lease STATE <input type="checkbox"/> FEE <input checked="" type="checkbox"/>
6. State Oil & Gas Lease No.
7. Lease Name or Unit Agreement Name LM Barton
8. Well Number 1B
9. OGRID Number 131994
10. Pool name or Wildcat Mesa Verde

SUNDRY NOTICES AND REPORTS ON WELLS
(DO NOT USE THIS FORM FOR PROPOSALS TO DRILL OR TO DEEPEN OR PLUG BACK TO A DIFFERENT RESERVOIR USE "APPLICATION FOR PERMIT" (FORM C-101) FOR SUCH PROPOSALS)

1. Type of Well: Oil Well ☐ Gas Well ☒ Other

2. Name of Operator Four Star Gas & Oil Company

3. Address of Operator
ATTN: Regulatory Specialist 332 Road 3100 Aztec, New Mexico 87410

4. Well Location

Unit Letter D : 660 feet from the North line and 960 feet from the West line
Section 12 Township 30N Range 12W NMPM San Juan County

11. Elevation (Show whether DR, RKB, RT, GR, etc.)
GL 5670'

12. Check Appropriate Box to Indicate Nature of Notice, Report or Other Data

NOTICE OF INTENTION TO:

PERFORM REMEDIAL WORK ☐ PLUG AND ABANDON ☐
TEMPORARILY ABANDON ☐ CHANGE PLANS ☐
PULL OR ALTER CASING ☐ MULTIPLE COMPL ☐
DOWNHOLE COMMINGLE ☐

SUBSEQUENT REPORT OF:

REMEDIAL WORK ☐ ALTERING CASING ☐
COMMENCE DRILLING OPNS. ☐ P AND A ☐
CASING/CEMENT JOB ☐

OTHER: ☐

OTHER ☒ Completion of zone

13. Describe proposed or completed operations. (Clearly state all pertinent details, and give pertinent dates, including estimated date of starting any proposed work). SEE RULE 19.15.7.14 NMAC. For Multiple Completions: Attach wellbore diagram of proposed completion or recompletion.

Notice of Intent to finish completion in the upper Mesaverde was filed and approved April 29, 2008. However the project was not begun until February of 2009 due to budgetary constraints.

See attached pages for project detail.

RCVD JUN 21 '12
OIL CONS. DIV.
DIST. 3

Spud Date:

10/21/2001

Rig Release Date:

Record Cleanup

I hereby certify that the information above is true and complete to the best of my knowledge and belief.

SIGNATURE April E. Pohl TITLE Regulatory Specialist DATE 06-20-2012

Type or print name April E. Pohl E-mail address: April.Pohl@chevron.com PHONE: 505-333-1941

For State Use Only

APPROVED BY: Brandt Bell TITLE Deputy Oil & Gas Inspector, District #3 DATE 7/19/12
Conditions of Approval (if any): AV Summary in well file

LM Barton 1B API 30-045-30540

1/16/2008

RUWO.

1/17/2008

CHECK PRESSURES. 110 PSI ON CASING. BLEED DOWN WELL. ND WELL HEAD. NU BOP

PRESSURE TEST BOPS. 250 LOW AND 1250 HIGH PIPES AND BLINDS

STRIP HANGER OUT OF WELL AND BREAK OUT HANGER.

BUMPER SPRING AND WIRELINE OVERSHOT IN TBNG. SWFN.

1/18/2008

CHECK PRESSURES. 110 PSI ON CASING. BLEED WELL DOWN. TRIP IN WELL W/ CASING SCRAPER TO 4470'

TRIP OUT OF WELL W/ CASING SCRAPER. RIH W/ COMPOSITE BRIDGE PLUG AND SET @4335.

LOG WELL FROM 4500' TO SURFACE

RIH W/ PERF GUNS & PERF FROM 4038 TO 4040, 4090 TO 4092, 4096 TO 4114, 4157 TO 4162. SWFN.

1/21/2008

BEGIN PUMPING FRAC. PUMPED 3127 GAL FRESH WATER ON LOAD AND BREAK. PUMPED 17,998 GAL OF PAD. PUMPED 8026 GAL OF 1# SAND, PUMPED 10,671 GAL OF 2# SAND, PUMPED 13,565 GAL OF 3# SAND, PUMPED 6749 GAL OF 4# SAND, AND PUMPED 2680 GAL OF FLUID ON FLUSH. 5MIN-1251 PSI. 10 MIN-1207 PSI. 15 MIN-1181 PSI.

CHECK PRESSURE ON WELL. 750 PSI ON WELL. OPEN WELL FLOWING @ 425 PSI ON 1/4" CHOKE

1/21/2008

FLOWING WELL ON 3/4" CHOKE WELL PSI 75 PSI. MAKING 20 BBLS PER HOUR FLUID. TRACE OF SAND.

1/24/2008

CHECK PRESSURES. 0 PSI ON GAUGES. ND ISOLATION TOOL FROM WELLHEAD. NU STRIPPING HEAD.

RIH W/ 40 JTS. RIH W/ REST OF TBNG AND TAG FILL @ 4235. 100' OF FILL ON TOP OF CMBP.

1/25/2008

CHECK PRESSURES. 950 PSI ON CASING. BLEED WELL OFF. TRIP IN WELL AND TAG FILL @4240. 105' OF FILL IN CASING

RUN IN WELL TO 2500'. GOOD CIRCULATION. TRIP IN WELL TO 4000'. SWFN.

1/26/2008

CHECK PRESSURES. 1175 PSI ON WELL. BLEED WELL DOWN. TRIP IN WELL AND TAG FILL @ 4186. 110' OF SAND IN CASING.

RIG UP SWIVEL AND BREAK CIRCULATION. 1250 CFM AIR. 12 BBLS PER HOUR MIST. 1 GAL SOAP IN 20 BBLS. 1 GAL CORROSION INHIBITOR IN 20 BBLS. CIRCULATING PRESSURE @ 325 PSI.

CLEANOUT WELL TO 4300 . MAKING HEAVY SAND. 35' OF FILL IN CASING. BLOW WELL DRY. SWFN.

1/28/2008

CHECK PRESSURES. 1375 PSI ON CASING. BLEED WELL DOWN ON 3" FLOW LINES.

TRIP IN WELL AND TAG FILL @4295'. 40' OF FILL IN CASING

RIG UP SWIVEL AND BREAK CIRCULATION. CLEAN OUT WELL TO 4325. 10' LEFT TO CLEANOUT. SWFN

1/29/2008

CHECK PRESSURES. 1500 MPsi ON CASING. BLEED WELL DOWN. TRIP IN WELL & TAG FILL @ 4310' 25' OF FILL IN CASING.

RIG UP SWIVEL AND BREAK CIRCULATION. 1250 CFM. 650 PSI . 12 BBLS PER HOUR MIST. 1 GAL SOAP IN 20 BBLS. 1 GAL CORROSION INHIBITOR IN 20 BBLS.

CLEAN OUT TO TOP OF BRIDGE PLUG. 4335' .MAKING LIGHT SAND. NATURAL FLOW WELL. SWFN.

1/30/2008

CHECK PRESSURES. 1500 PSI ON CASING. BLEED WELL DOWN. TRIP IN WELL AND TAG FILL @4307. 28' OF SAND IN CASING.

RIG UP SWIVEL AND BREAK CIRCULATION. CLEANOUT WELL TO TOP OF BRIDGE PLUG @ 4335.

NATURAL FLOW WELL. SWFN.

2/1/2008

CHECK PRESSURES. SICP 1550 PSI. BLEED DOWN WELL. TRIP IN WELL AND TAG UP @4325'. 10' OF FILL IN CASING.

TRIP OUT OF WELL W/ CLEANOUT BHA. TRIP IN WELL TO 4139. LAND WELL.

ND BOP. NU WELLHEAD. SWFN

2/10/2008

CHECK PRESSURES. 70 PSI FLOWING TO SALES. ATTEMPT TO GET PLUNGER UP.

FLOWING WELL UP TBNG, PRESSURE CLIMBING AS FLUID RELEASED OFF WELL BORE.

NO SUCCESS GETTING PLUNGER UP. ENDING PRESSURES WERE, 430 PSI ON CASING AND 260 PSI ON TBNG

SWFN.

2/11/2008

CHECK PRESSURES. 450 PSI ON CASING. 275 PSI ON TBNG

RIH AND TAG PLUNGER. COULD NOT FISH. CHASE PLUNGER TO F NIPPLE. POOH. RIH W/ 3 SLIP STOP AND SET @ 4114. POOH.

PUMP 10 BBLS DOWN TBNG. ND WH AND NU BOPS. TEST BOPS. 250 LOW AND 2200 HIGH PIPES AND BLINDS. GOOD TEST.

TRIP OUT OF WELL W/134 JTS OF 2-3/8" PRODUCTION TBG. AND F NIPPLE AND 4' MULE SHOE. SWFN.

2/12/2008

CHECK PRESSURES. 440 PSI ON CASING. FLOW WELL DOWN. TRIP IN WELL TO 4275. 60FT OF FILL TO CLEANOUT.

RIG UP PWR SWIVEL AND BREAK CIRCULATION. 1500 CFM AIR. 12 BBLS PER HR MIST AND 1/2 GAL IN 20 BBLS OF SOAP.

1 GAL CORROSION INHIBITOR IN 20 BBLS. STAND PIPE PRESSURE @ 650 PSI. BEGIN CLEANING OUT SAND. CLEANOUT TO CIBP. WELL MAKING SAND. CLEAN UP SAND.

BEGIN DRILLING OUT CIBP. SAME CIRC PRESSURES AND VOLUMES. DRILL UP CIBP. LET WELL CLEANUP.

CHASE CIBP TO 4600' TAG SOLID. 135' OF FILL TO CLEANOUT TO PBTD. 4735 PBTD. PULL 25 STANDS ABOVE PERFS. SWFN.

2/13/2008

CHECK PRESSURES. 390 PSI ON CASING. FLOW WELL DOWN. BREAK CIRCULATION. CLEANOUT WELL TO PBTD 4735. BLOW WELL DRY. NATURAL FLOW WELL. SWFN.

2/16/2008

CHECK PRESSURES. 395 PSI ON WELL. FLOW WELL DOWN. TRIP IN WELL AND TAG FILL @ PBTD. NO FILL. BLOW WELL AROUND TO DRY UP WELL BORE.

TRIP OUT OF WELL W/ WORKSTRING AND DRILL COLLARS. SWFN

2/17/2008

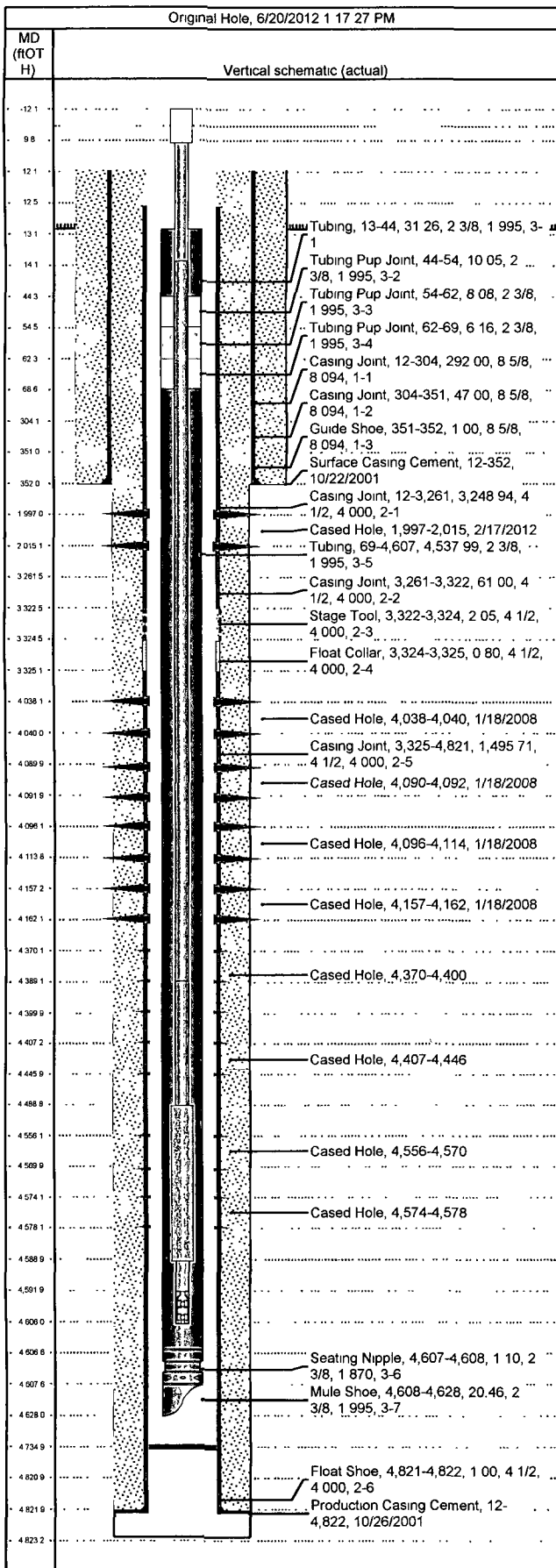
CHECK PRESSURES. 395 PSI ON CASING. BLOW WELL DOWN. MAKE UP BHA. TRIP IN WELL W/ TBNG AND BHA. MULE SHOE, SEAT NIPPLE AND TBNG TO 4400'.

FINISH TRIPPING IN WELL. LAND TBNG IN HANGER @4569.52.. ND BOP. NU WELL HEAD. RDMO.
SECURE LOCATION. TURN WELL OVER TO PUMPER.



Wellbore Schematic

Well Name LM Barton 1B	Lease Barton, L.M.	Field Name Blanco Mesa Verde	Business Unit Mid-Continent/Alaska
---------------------------	-----------------------	---------------------------------	---------------------------------------



Job Details

Job Category	Start Date	Release Date
Major Rig Work Over (MRWO)	1/16/2008	2/1/2008
Major Rig Work Over (MRWO)	2/9/2009	2/17/2009

Casing Strings

Csg Des	OD (in)	Wt/Len (lb/ft)	Grade	Top Thread	Set Depth (MD) (ftOTH)
Surface	8 5/8	24.00	K-55		352
Production Casing	4 1/2	11 60	J-55		4,822

Tubing Strings

Tubing - Production set at 4,628.1ftOTH on 2/23/2012 11:00

Tubing Description		Run Date		String Length (ft)		Set Depth (ftOTH)	
Tubing - Production		2/23/2012		4,615.10		4,628.1	
Item Des	Jts	OD (in)	Wt (lb/ft)	Grade	Len (ft)	Btm (ftOTH)	
Tubing	1	2 3/8	4.70	J-55	31.26	44.3	
Tubing Pup Joint	1	2 3/8	4.70	J-55	10.05	54.3	
Tubing Pup Joint	1	2 3/8	4.70	J-55	8.08	62.4	
Tubing Pup Joint	1	2 3/8	4.70	J-55	6.16	68.6	
Tubing	145	2 3/8	4.70	J-55	4,537.99	4,606.5	
Seating Nipple		2 3/8	4.70	J-55	1.10	4,607.6	
Mule Shoe	1	2 3/8	4.70	J-55	20.46	4,628.1	

Rod Strings

Long String on 2/24/2012 08:00

Rod Description		Run Date		String Length (ft)		Set Depth (ftOTH)	
Long String		2/24/2012		4,618.00		4,606.0	
Item Des	Jts	OD (in)	Wt (lb/ft)	Grade	Len (ft)	Btm (ftOTH)	
Polished Rod		1 1/4			22.00	10.0	
Pony Rod		3/4			4.00	14.0	
Sucker Rod	175	3/4	1.63	D	4,375.00	4,389.0	
Sucker Rod, 2" guided 5/per	4	3/4	1.63	D	100.00	4,489.0	
Sinker Bar	4	1 1/4	4.17		100.00	4,589.0	
Stabilizer bar		3/4			3.00	4,592.0	
2 x 1 1/4 x 14 x 14-3 RHAC		3/4			14.00	4,606.0	

Perforations

Date	Top (ftOTH)	Btm (ftOTH)	Shot Dens (shots/ft)	Entered Shot Total	Zone & Completion
2/17/2012	1,997.0	2,015.0	4.0	22	Fruitland Coal Upper, Original Hole
1/18/2008	4,038.0	4,040.0	2.0		Menefee, Original Hole
1/18/2008	4,090.0	4,092.0	2.0		Menefee, Original Hole
1/18/2008	4,096.0	4,114.0	2.0		Menefee, Original Hole
1/18/2008	4,157.0	4,162.0	2.0		Menefee, Original Hole
	4,370.0	4,400.0	2.0	22	Point Lookout, Original Hole
	4,407.0	4,446.0	2.0	22	Point Lookout, Original Hole
	4,556.0	4,570.0	2.0	22	Point Lookout, Original Hole
	4,574.0	4,578.0	2.0	23	Point Lookout, Original Hole

Other Strings

Run Date	Pull Date	Set Depth (ftOTH)	Com