

District I
1625 N. French Dr., Hobbs, NM 88240
District II
1301 W. Grand Avenue, Artesia, NM 88210
District III
1000 Rio Brazos Road, Aztec, NM 87410
District IV
1220 S. St. Francis Dr., Santa Fe, NM 87505

State of New Mexico
Energy Minerals and Natural Resources

Oil Conservation Division
1220 South St. Francis Dr.
Santa Fe, NM 87505

Form C-141
Revised August 8, 2011

Submit 1 Copy to appropriate District Office to
accordance with 19.15.29 NMAC.

Release Notification and Corrective Action

OPERATOR

☐ Initial Report ☒ Final Report

Name of Company ConocoPhillips Company	Contact Crystal Tafoya
Address 3401 East 30th St, Farmington, NM	Telephone No. (505) 326-9837
Facility Name: Lindrieth B Unit 2	Facility Type: Gas Well

Surface Owner BLM	Mineral Owner BLM (SF-078914)	API No. 30-039-22138
--------------------------	--------------------------------------	-----------------------------

LOCATION OF RELEASE

Unit Letter L	Section 28	Township 24N	Range 3W	Feet from the 1739	North/South Line South	Feet from the 861	East/West Line West	County Rio Arriba
-------------------------	----------------------	------------------------	--------------------	------------------------------	----------------------------------	-----------------------------	-------------------------------	-----------------------------

Latitude 36.2789 Longitude 107.16738

NATURE OF RELEASE

Type of Release Produced Fluids	Volume of Release 120 yds	Volume Recovered
Source of Release	Date and Hour of Occurrence 3/15/2012	Date and Hour of Discovery
Was Immediate Notice Given? <input type="checkbox"/> Yes <input type="checkbox"/> No <input checked="" type="checkbox"/> Not Required	If YES, To Whom?	
By Whom?	Date and Hour	
Was a Watercourse Reached? <input type="checkbox"/> Yes <input checked="" type="checkbox"/> No	If YES, Volume Impacting the Watercourse.	

If a Watercourse was Impacted, Describe Fully.*
N/A

**RCVD AUG 23 '12
OIL CONS. DIV.**

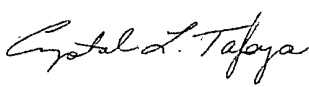
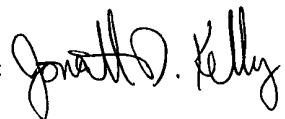
Describe Cause of Problem and Remedial Action Taken.*
Below Grade Tank Closure Activites

DIST. 3

Describe Area Affected and Cleanup Action Taken.*

Historical hydrocarbon impacted soil was found during the BGT closure for the subject well. The excavation was 30'X40'X9' and 120yds of soil was transported to TNT landfarm and 120yds of clean soil was transported from Lindrieth Oil Field and placed in the excavation site. The soil sampling report is attached for review.

I hereby certify that the information given above is true and complete to the best of my knowledge and understand that pursuant to NMOCD rules and regulations all operators are required to report and/or file certain release notifications and perform corrective actions for releases which may endanger public health or the environment. The acceptance of a C-141 report by the NMOCD marked as "Final Report" does not relieve the operator of liability should their operations have failed to adequately investigate and remediate contamination that pose a threat to ground water, surface water, human health or the environment. In addition, NMOCD acceptance of a C-141 report does not relieve the operator of responsibility for compliance with any other federal, state, or local laws and/or regulations.

Signature: 		OIL CONSERVATION DIVISION	
Printed Name: Crystal Tafoya		Approved by Environmental Specialist: 	
Title: Field Environmental Specialist		Approval Date: 9/06/2012	Expiration Date:
E-mail Address: crystal.tafoya@conocophillips.com		Conditions of Approval:	Attached <input type="checkbox"/>
Date: 8/23/12 Phone: (505) 326-9837			

* Attach Additional Sheets If Necessary

nJK 122 5055257



Animas Environmental Services, LLC

www.animasenvironmental.com

624 E. Comanche
Farmington, NM 87401
505-564-2281

Durango, Colorado
970-403-3274

April 17, 2012

Ashley Maxwell
ConocoPhillips
San Juan Business Unit
Office 216-2
5525 Hwy 64
Farmington, NM 87401

**RE: Initial Release Assessment and Final Excavation Report
Lindrith B #2
Rio Arriba County, New Mexico**

Dear Ms. Maxwell:

On March 9 and 23, 2012, Animas Environmental Services, LLC (AES) completed an initial and final assessment of a release excavation at the Lindrith B #2, located in Rio Arriba County, New Mexico. The initial release assessment and excavation was completed by CoP contractors prior to AES' arrival to the location on March 9, 2012. The final excavation was also completed by contractors prior to AES' arrival to the location on March 23, 2012. The historical release was reported to be from the former production tank at the location.

1.0 Site Information

1.1 Location

Location - NW¼ SW¼, Section 28, T24N, R3W, Rio Arriba County, New Mexico
Well Head Latitude/Longitude - N36.27890 and W107.16807, respectively
Release Location Latitude/Longitude - N36.27866 and W107.16848, respectively
Land Jurisdiction - Private

Figure 1 - Topographic Site Location Map

Figure 2 - General Site Map, March 2012

Figure 3 - Initial Assessment Soil Sample Locations and Results, March 2012

Figure 4 - Final Excavation Soil Sample Locations and Results, March 2012

1.2 NMOCD Ranking

Prior to site work, the New Mexico Oil Conservation Division (NMOCD) database was reviewed, and no prior ranking information was located. Additionally, the New Mexico Office of the State Engineer (NMOSE) database was reviewed, and no registered water wells are located within 1,000 feet of the location. Once on site, AES personnel

assessed the ranking using topographical interpretation, Global Positioning System (GPS) elevation readings, and visual reconnaissance. AES personnel concluded that depth to groundwater at the site was between 50 to 100 feet below ground surface (bgs), and the location is not within a well-head protection area. The site is located approximately 200 to 300 feet southwest of a livestock pond which discharges to Medio Wash. The site was assessed a NMOCD ranking of 20.

1.3 Initial Release Assessment

AES was initially contacted by Ashley Maxwell of CoP on March 9, 2012, and the same day, Ross Kennemer and Tami Ross of AES completed the release assessment field work. The assessment included collection and field screening of five point composite samples from each wall and the base of an existing release excavation, for a total of five soil samples. Based on the field screening results, AES recommended further excavation of the release area. Sample locations and excavation extents are shown on Figure 3.

On March 23, 2012, AES returned to the location to collect confirmation soil samples of the excavation. The field screening activities included collecting 10 confirmation soil samples of the walls and base of the excavation. The final excavation was approximately 53 feet by 41 feet by 8 feet in depth. While on site, AES identified an area of concern near soil sample SC-8 where visible soil contamination was observed and confirmed during field screening. An additional 10 cubic yards of soil were removed from this area of concern while AES was on site, and sample SC-9 was collected following the additional excavation. Sample locations and final excavation extents are shown on Figure 4.

2.0 Soil Sampling

A total of 15 5-point composite soil samples were collected from the four walls and the base of the existing excavation during the assessments (EXC-1 through EXC-5 and SC-1 through SC-10). All soil samples were field-screened for volatile organic compounds (VOCs) and were also analyzed for total petroleum hydrocarbons (TPH). Three of the soil samples collected during the initial assessment (EXC-2 through EXC-4) were also submitted to Hall Environmental Analysis Laboratory (Hall) for laboratory analysis.

2.1 Field Screening

2.1.1 Volatile Organic Compounds

Field-screening for VOC vapors was conducted with a photo-ionization detector (PID) organic vapor meter (OVM). Before beginning field screening, the PID-OVM was first calibrated with 100 parts per million (ppm) isobutylene gas.

2.1.2 Total Petroleum Hydrocarbons

Field TPH samples were analyzed per USEPA Method 418.1 using a Buck Scientific Model HC-404 Total Hydrocarbon Analyzer Infrared Spectrometer (Buck). A 3-point calibration was completed prior to conducting soil analyses. Field analytical protocol followed AES's *Standard Operating Procedure: Field Analysis Total Petroleum Hydrocarbons per EPA Method 418.1*.

2.2 Laboratory Analyses

The soil samples (EXC-2, EXC-3, and EXC-4) collected for laboratory analysis were placed into new, clean, laboratory-supplied containers, which were then labeled, placed on ice, and logged onto a sample chain of custody record. Samples were maintained on ice until delivery to the analytical laboratory, Hall, in Albuquerque, New Mexico. Soil samples were laboratory analyzed for:

- Benzene, toluene, ethylbenzene, and xylene (BTEX) per U.S. Environmental Protection Agency (USEPA) Method 8021B;
- TPH for gasoline range organics (GRO) and diesel range organics (DRO) per USEPA Method 8015B;

2.3 Field Screening and Laboratory Analytical Results

On March 9, 2012, initial assessment field screening results for VOCs via OVM showed concentrations ranging from 2.3 ppm in EXC-1 up to 1,720 ppm in EXC-3. Field TPH concentrations ranged from 42.1 mg/kg in EXC-1 up to 741 mg/kg in EXC-4.

On March 23, 2012, final excavation field screening results for VOCs via OVM showed concentrations ranging from 0.5 ppm in SC-5 to 14.9 ppm in SC-1. Field TPH concentrations ranged from 20.9 mg/kg in SC-6 up to 185 mg/kg in S-8. Results are included below in Table 1 and on Figures 3 and 4. The AES Field Screening Reports are attached.

Table 1. Soil Field Screening VOCs and TPH Results
Lindrith B #2 Release Assessment and Final Excavation, March 2012

<i>Sample ID</i>	<i>Date Sampled</i>	<i>Sample Depth (ft bgs)</i>	<i>VOCs OVM Reading (ppm)</i>	<i>Field TPH (mg/kg)</i>
		<i>NMOCD Action Level*</i>	<i>100</i>	<i>100</i>
EXC-1	3/9/12	1 to 8	2.3	42.1
EXC-2	3/9/12	1 to 8	261	250
EXC-3	3/9/12	1 to 8	1,720	466
EXC-4	3/9/12	1 to 8	1,712	741
EXC-5	3/9/12	8	14.3	89.5

Sample ID	Date Sampled	Sample Depth (ft bgs)	VOCs OVM Reading (ppm)	Field TPH (mg/kg)
NMOCD Action Level*			100	100
SC-1	3/23/12	1 to 8	14.9	65.9
SC-2	3/23/12	1 to 8	3.3	71.5
SC-3	3/23/12	1 to 8	4.3	49.0
SC-4	3/23/12	1 to 8	8.6	40.6
SC-5	3/23/12	1 to 8	0.5	86.9
SC-6	3/23/12	1 to 8	2.2	20.9
SC-7	3/23/12	1 to 8	3.7	44.8
SC-8	3/23/12	1 to 8	4.7	185
SC-9	3/23/12	8	5.2	89.0
SC-10	3/23/12	8	NA	26.5

NA – Not Analyzed

*Action level determined by the NMOCD ranking score per *NMOCD Guidelines for Leaks, Spills, and Releases* (August 1993)

Laboratory analyses for EXC-2 through EXC-4 were used to confirm field screening results from the initial assessment. Benzene concentrations ranged from less than 0.50 mg/kg in EXC-2 up to 20 mg/kg in EXC-4, and BTEX concentrations ranged from less than 2.5 mg/kg in EXC-2 up to 433 mg/kg in EXC-4. TPH concentrations (as GRO/DRO) ranged from 415 mg/kg in EXC-2 up to 4,110 mg/kg in EXC-4. Final TPH results over the NMOCD action level of 100 mg/kg were used to provide recommendations for the area needing further excavation. Results are presented in Table 2 and on Figure 3. Laboratory analytical reports are attached.

Table 2. Laboratory Analytical Results – Benzene, BTEX and TPH
Lindrith B #2 Release Assessment and Final Excavation, March 2012

Sample ID	Date Sampled	Sample Depth (ft bgs)	Benzene (mg/kg)	BTEX (mg/kg)	GRO (mg/kg)	DRO (mg/kg)
NMOCD Action Level*			10	50	100	
EXC-2	03/9/12	1 to 8	<0.50	<2.5	85	330
EXC-3	03/9/12	1 to 8	5.8	52	710	1,100
EXC-4	03/9/12	1 to 8	20	433	3,600	510

*Action level determined by the NMOCD ranking score per *NMOCD Guidelines for Leaks, Spills, and Releases* (August 1993)

3.0 Conclusions and Recommendations

On March 9, 2012, AES conducted an initial assessment of an existing excavation associated with a historical release from the former production tank at the Lindrith B #2, located in Rio Arriba County, New Mexico. Field screening showed concentrations above the NMOCD action levels of 100 ppm VOCs and 100 mg/kg TPH in EXC-2, EXC-3, and EXC-4. The highest VOC concentration was 1,720 ppm in EXC-3, and the highest TPH concentration was reported in EXC-4 with 741 mg/kg.

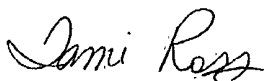
Laboratory analyses collected on March 9, 2012, showed that benzene, total BTEX, and TPH concentrations were above the applicable NMOCD thresholds in EXC-4 with 20 mg/kg benzene, 433 mg/kg BTEX, and 4,110 mg/kg TPH. TPH concentrations were also above the NMOCD action level in EXC-2 (1,810 mg/kg) and EXC-3 (415 mg/kg). Based on field screening and laboratory results, continued excavation was recommended for the location.

On March 23, 2012, a final assessment of the additional excavation area was completed. Field screening results of the excavation extents showed that VOC and TPH concentrations were below applicable NMOCD action levels for all of the final four walls and the base of the excavation. Note that TPH concentrations in SC-8 were reported at 185 mg/kg. Based on this, an additional area of petroleum hydrocarbon soil was removed, and the subsequent sample SC-9 showed a confirmation TPH concentration of 89.0 mg/kg.

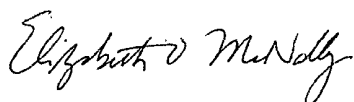
Based on the final field screening results of the excavation of petroleum contaminated soils at the Lindrith B #2, VOC and TPH concentrations were below applicable NMOCD action levels. No further work is recommended.

If you have any questions about this report or site conditions, please do not hesitate to contact me at (505) 564-2281.

Sincerely,



Tami C. Ross, CHMM
Project Manager

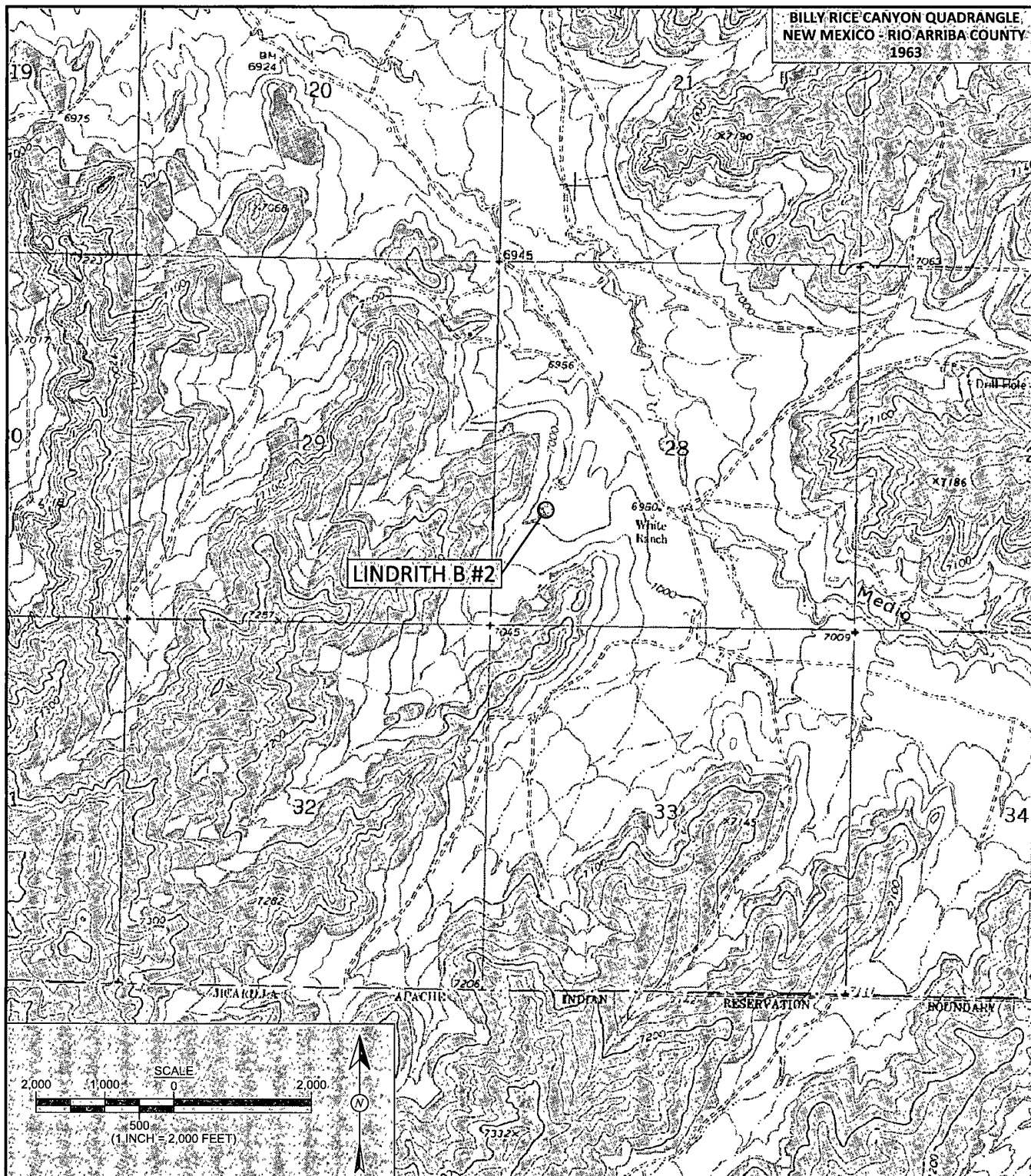


Elizabeth McNally, PE

Attachments:

Figure 1 - Topographic Site Location Map
Figure 2 – General Site Map
Figure 3 – Initial Assessment Soil Sample Locations and Results, March 2012
Figure 4 – Final Excavation Soil Sample Locations and Results, March 2012
AES Field Screening Report 030912
AES Field Screening Report 032312
Hall Laboratory Analytical Report 1203369

S:\Animas 2000\2012 Projects\Conoco Phillips\Lindrith B #2\Release Assessment March 2012\Lindrith B #2 Release Assessment and Final Excavation Report 041712.docx



Animas Environmental Services, LLC

DRAWN BY:

C. Lameman

DATE DRAWN:

February 24, 2012

REVISIONS BY:

C. Lameman

DATE REVISED:

February 24, 2012

CHECKED BY:

D. Watson

DATE CHECKED:

February 24, 2012

APPROVED BY:

E. McNally

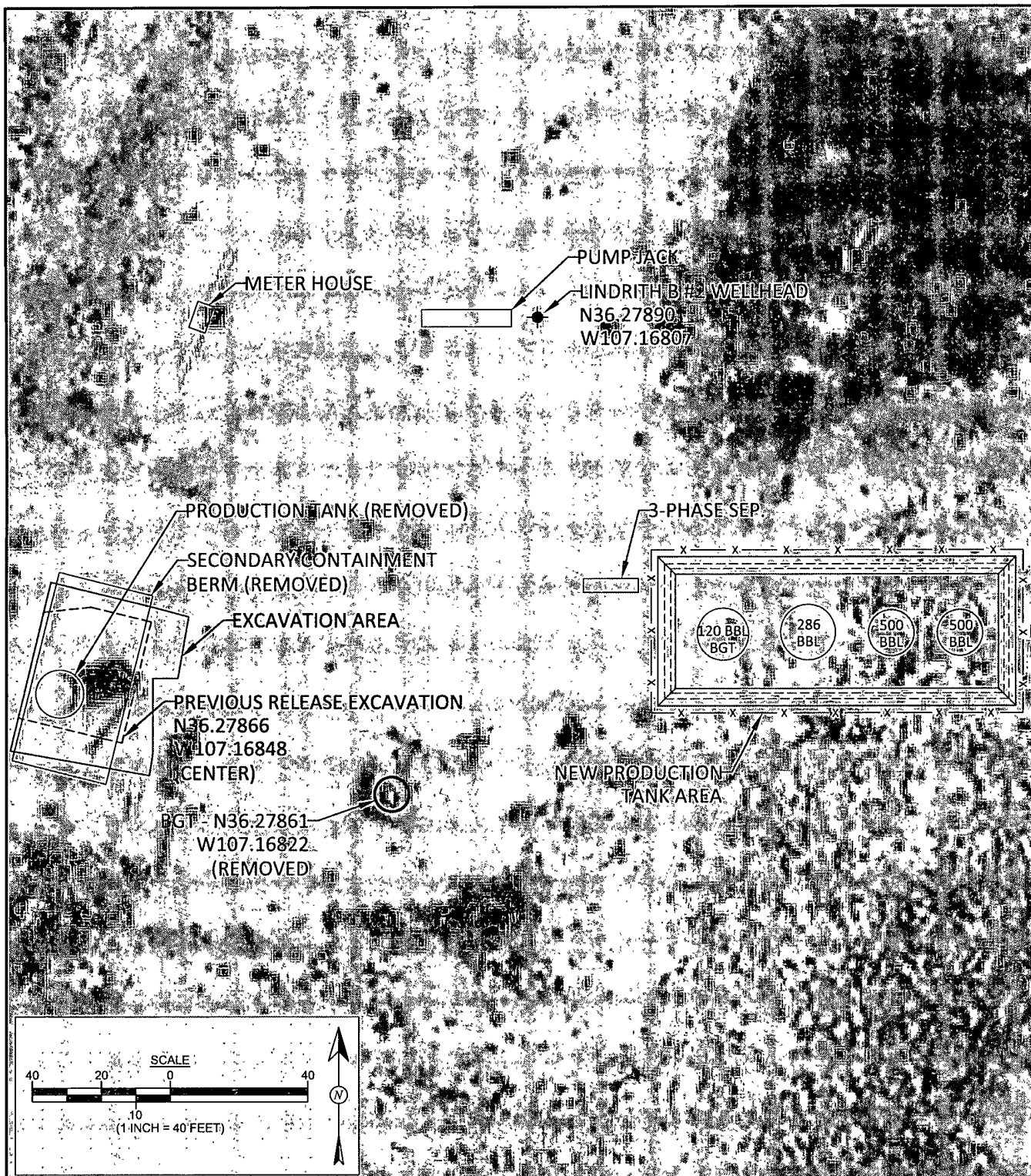
DATE APPROVED:

April 17, 2012

FIGURE 1

TOPOGRAPHIC SITE LOCATION MAP

ConocoPhillips
LINDRITH B #2
RIO ARriba COUNTY, NEW MEXICO
NW¼, SW¼, SECTION 28, T24N, R3W
N36.27890, W107.16807



Animas Environmental Services, LLC

DRAWN BY:

R. Kenemer

DATE DRAWN:

March 12, 2012

REVISIONS BY:

C. Lameman

DATE REVISED:

March 26, 2012

CHECKED BY:

T. Ross

DATE CHECKED:

March 26, 2012

APPROVED BY:

E. McNally

DATE APPROVED:

April 17, 2012

FIGURE 2

GENERAL SITE MAP

MARCH 2012

ConocoPhillips

LINDRITH B #2

RIO ARriba COUNTY, NEW MEXICO

NW¼, SW¼, SECTION 28, T24N, R3W

N36.27890, W107.16807

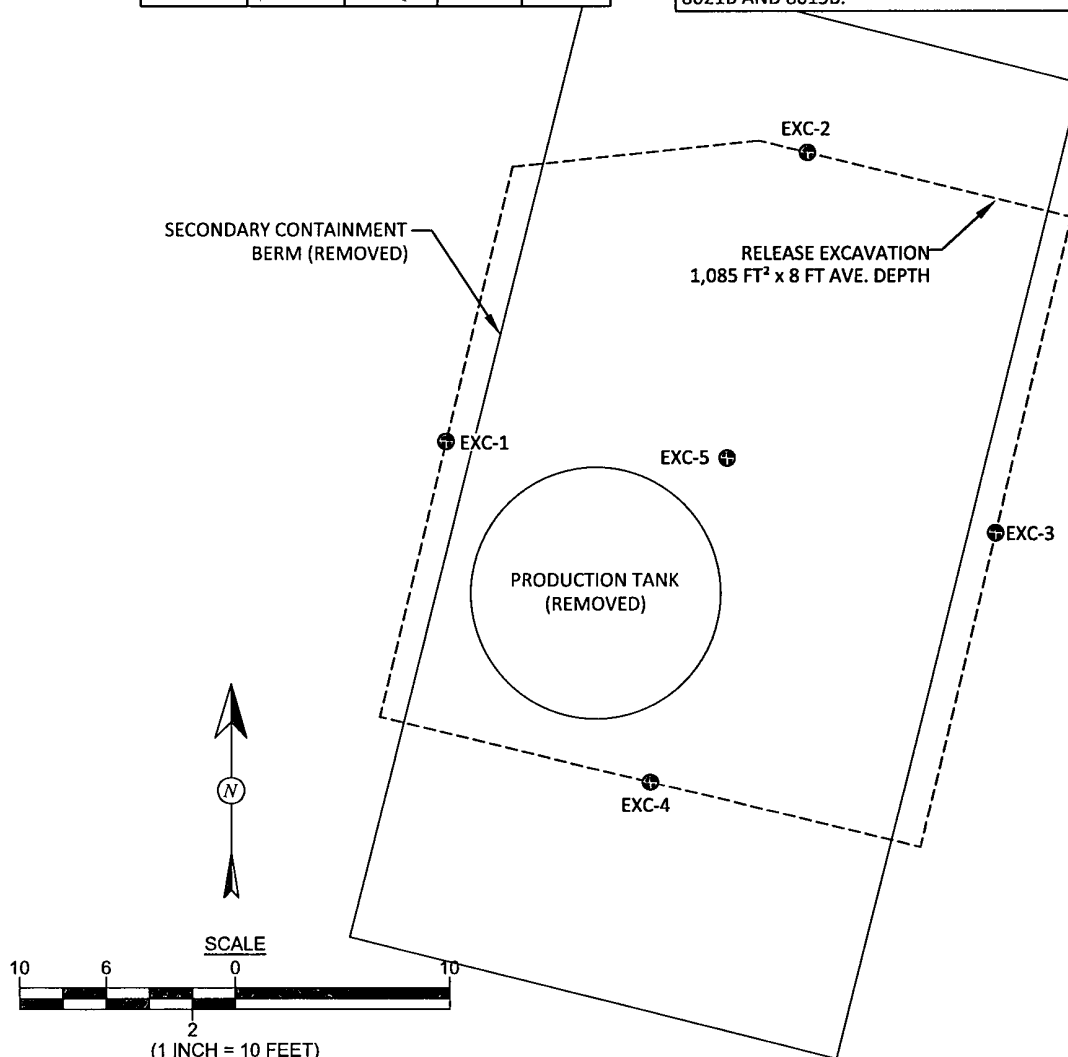
LEGEND

● SAMPLE LOCATIONS

FIELD SCREENING RESULTS				
SAMPLE ID	DATE	DEPTH (ft)	OVM-PID (ppm)	TPH (mg/kg)
NMOCD ACTION LEVEL			100	100
EXC-1	3/9/12	1 to 8	2.3	42.1
EXC-2	3/9/12	1 to 8	261	250
EXC-3	3/9/12	1 to 8	1,720	466
EXC-4	3/9/12	1 to 8	1,712	741
EXC-5	3/9/12	8	14.3	89.5

LABORATORY ANALYTICAL RESULTS					
SAMPLE ID	DATE	BENZENE (mg/kg)	TOTAL BTEX (mg/kg)	TPH - GRO (mg/kg)	TPH - DRO (mg/kg)
NMOCD ACTION LEVEL		10	50	100	
EXC-2	3/9/12	<0.50	<2.5	68	330
EXC-3	3/9/12	5.8	52	710	1,100
EXC-4	3/9/12	20	433	3,600	510

NOTE: ALL SAMPLES WERE ANALYZED PER EPA METHOD 8021B AND 8015B.



Animas Environmental Services, LLC

DRAWN BY:
R. Kennemer

DATE DRAWN:
March 12, 2012

REVISIONS BY:
C. Lameman

DATE REVISED:
April 6, 2012

CHECKED BY:
T. Ross

DATE CHECKED:
April 6, 2012

APPROVED BY:
R. Kennemer

DATE APPROVED:
April 17, 2012

FIGURE 3

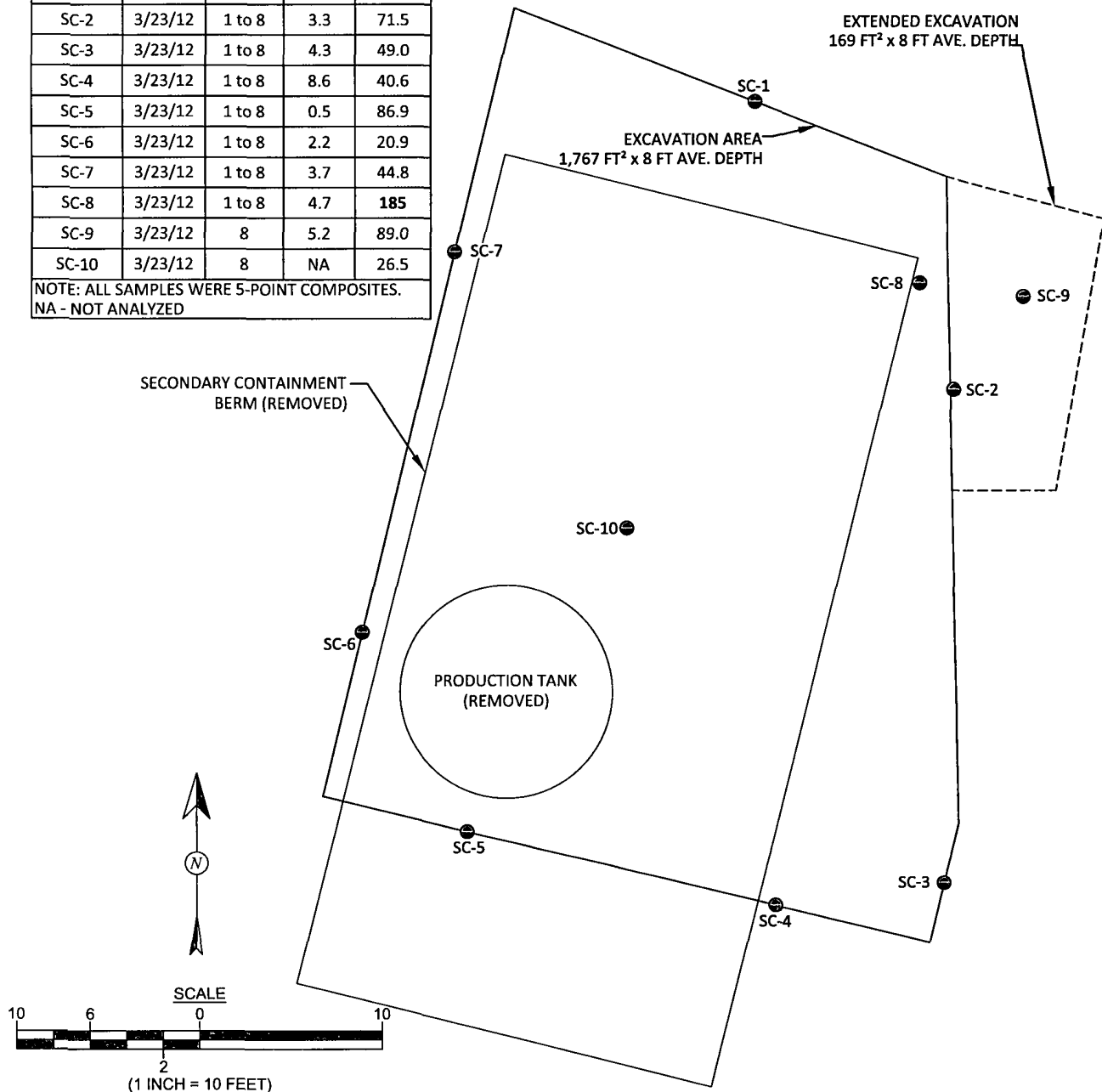
**INITIAL ASSESSMENT SOIL
SAMPLE LOCATIONS AND RESULTS
MARCH 2012**

ConocoPhillips
LINDRITH B #2
RIO ARriba COUNTY, NEW MEXICO
NW¼, SW¼, SECTION 28, T24N, R3W
N36.27890, W107.16807

FIELD SCREENING RESULTS				
SAMPLE ID	DATE	DEPTH (ft)	OVM-PID (ppm)	TPH (mg/kg)
NMOCD ACTION LEVEL			100	100
SC-1	3/23/12	1 to 8	14.9	65.9
SC-2	3/23/12	1 to 8	3.3	71.5
SC-3	3/23/12	1 to 8	4.3	49.0
SC-4	3/23/12	1 to 8	8.6	40.6
SC-5	3/23/12	1 to 8	0.5	86.9
SC-6	3/23/12	1 to 8	2.2	20.9
SC-7	3/23/12	1 to 8	3.7	44.8
SC-8	3/23/12	1 to 8	4.7	185
SC-9	3/23/12	8	5.2	89.0
SC-10	3/23/12	8	NA	26.5

NOTE: ALL SAMPLES WERE 5-POINT COMPOSITES.
NA - NOT ANALYZED

LEGEND	
	SAMPLE LOCATIONS



Animas Environmental Services, LLC

DRAWN BY: R. Kennemer	DATE DRAWN: March 12, 2012
REVISIONS BY: C. Lameman	DATE REVISED: April 6, 2012
CHECKED BY: T. Ross	DATE CHECKED: April 6, 2012
APPROVED BY: R. Kennemer	DATE APPROVED: April 17, 2012

FIGURE 4

FINAL EXCAVATION, SAMPLE LOCATIONS AND RESULTS, MARCH 2012

ConocoPhillips
LINDRITH B #2
RIO ARriba COUNTY, NEW MEXICO
NW¼, SW¼, SECTION 28, T24N, R3W
N36.27890, W107.16807

AES Field Screening Report



Animas Environmental Services, LLC

www.animasenvironmental.com

624 E. Comanche
Farmington, NM 87401
505-564-2281

Durango, Colorado
970-403-3274

Client: ConocoPhillips

Project Location: Lindrith B #2

Date: 3/9/2012

Matrix: Soil

Sample ID	Collection Date	Collection Time	OVM (ppm)	Time of Sample Analysis	Field TPH* (mg/kg)	TPH PQL (mg/kg)	DF	TPH Analysts Initials
EXC-1	3/9/2012	10:45	2.3	11:21	42.1	20.0	1	TCR
EXC-2	3/9/2012	10:48	261	11:22	250	20.0	1	TCR
EXC-3	3/9/2012	10:52	1,720	11:23	466	20.0	1	TCR
EXC-4	3/9/2012	10:55	1,712	11:24	741	20.0	1	TCR
EXC-5	3/9/2012	10:57	14.3	11:25	89.5	20.0	1	TCR

Total Petroleum Hydrocarbons - USEPA 418.1

PQL Practical Quantitation Limit
ND Not Detected at the Reporting Limit
DF Dilution Factor
NA Not Analyzed

Analyst:

Jami Ross

AES Field Screening Report



Animas Environmental Services, LLC

www.animasenvironmental.com

624 E. Comanche
Farmington, NM 87401
505-564-2281

Durango, Colorado
970-403-3274

Client: ConocoPhillips

Project Location: Lindrith B #2

Date: 3/23/2012

Matrix: Soil

Sample ID	Collection Date	Collection Time	OVM (ppm)	Time of Sample Analysis	Field TPH* (mg/kg)	TPH PQL (mg/kg)	DF	TPH Analysts Initials
SC-1	3/23/2012	12:10	14.9	13:35	65.9	20.0	1	TCR
SC-2	3/23/2012	12:13	3.3	13:39	71.5	20.0	1	TCR
SC-3	3/23/2012	12:17	4.3	13:43	49.0	20.0	1	TCR
SC-4	3/23/2012	12:22	8.6	13:50	40.6	20.0	1	TCR
SC-5	3/23/2012	12:40	0.5	13:54	86.9	20.0	1	TCR
SC-6	3/23/2012	12:45	2.2	13:59	20.9	20.0	1	TCR
SC-7	3/23/2012	12:50	3.7	14:04	44.8	20.0	1	TCR
SC-8	3/23/2012	15:30	4.7	15:40	185	20.0	1	TCR
SC-9	3/23/2012	16:05	5.2	16:15	89.0	20.0	1	TCR
SC-10	3/23/2012	16:15	NA	14:20	26.5	20.0	1	TCR

Total Petroleum Hydrocarbons - USEPA 418.1

PQL Practical Quantitation Limit
ND Not Detected at the Reporting Limit
DF Dilution Factor
NA Not Analyzed

Analyst:

Ami Ross

*Field TPH analyzed on March 23 and 25, 2012



*Hall Environmental Analysis Laboratory
4901 Hawkins NE
Albuquerque, NM 87109
TEL 505-345-3975 FAX 505-345-4107
Website www.hallenvironmental.com*

March 13, 2012

Ross Kennemer

Animas Environmental Services

624 East Comanche

Farmington, NM 87401

TEL: (505) 564-2281

FAX (505) 324-2022

RE: Lindrith B #2 Release Assessment

OrderNo.: 1203369

Dear Ross Kennemer:

Hall Environmental Analysis Laboratory received 3 sample(s) on 3/10/2012 for the analyses presented in the following report.

These were analyzed according to EPA procedures or equivalent. To access our accredited tests please go to www.hallenvironmental.com or the state specific web sites. See the sample checklist and/or the Chain of Custody for information regarding the sample receipt temperature and preservation. Data qualifiers or a narrative will be provided if the sample analysis or analytical quality control parameters require a flag. All samples are reported as received unless otherwise indicated.

Please don't hesitate to contact HEAL for any additional information or clarifications.

Sincerely,

A handwritten signature in black ink, appearing to read "Andy Freeman", with a stylized flourish at the end.

Andy Freeman

Laboratory Manager

4901 Hawkins NE

Albuquerque, NM 87109

Analytical Report

Lab Order 1203369

Date Reported: 3/13/2012

Hall Environmental Analysis Laboratory, Inc.**CLIENT:** Animas Environmental Services**Client Sample ID:** SC-2**Project:** Lindrith B #2 Release Assessment**Collection Date:** 3/9/2012 10:48:00 AM**Lab ID:** 1203369-001**Matrix:** MEOH (SOIL)**Received Date:** 3/10/2012 10:40:00 AM

Analyses	Result	RL	Qual	Units	DF	Date Analyzed
EPA METHOD 8015B: DIESEL RANGE ORGANICS						Analyst: JMP
Diesel Range Organics (DRO)	330	9.9		mg/Kg	1	3/12/2012 9:41:40 AM
Surr: DNOP	94.0	77.4-131		%REC	1	3/12/2012 9:41:40 AM
EPA METHOD 8015B: GASOLINE RANGE						Analyst: RAA
Gasoline Range Organics (GRO)	85	50		mg/Kg	10	3/12/2012 11:27:17 AM
Surr: BFB	155	69.7-121	S	%REC	10	3/12/2012 11:27:17 AM
EPA METHOD 8021B: VOLATILES						Analyst: RAA
Benzene	ND	0.50		mg/Kg	10	3/12/2012 11:27:17 AM
Toluene	ND	0.50		mg/Kg	10	3/12/2012 11:27:17 AM
Ethylbenzene	ND	0.50		mg/Kg	10	3/12/2012 11:27:17 AM
Xylenes, Total	1.0	1.0		mg/Kg	10	3/12/2012 11:27:17 AM
Surr: 4-Bromofluorobenzene	101	85.3-139		%REC	10	3/12/2012 11:27:17 AM

Qualifiers: *X Value exceeds Maximum Contaminant Level.
E Value above quantitation range
J Analyte detected below quantitation limits
R RPD outside accepted recovery limits
S Spike Recovery outside accepted recovery limits

B Analyte detected in the associated Method Blank
H Holding times for preparation or analysis exceeded
ND Not Detected at the Reporting Limit
RL Reporting Detection Limit

Analytical Report

Lab Order 1203369

Date Reported: 3/13/2012

Hall Environmental Analysis Laboratory, Inc.

CLIENT: Animas Environmental Services

Client Sample ID: SC-3

Project: Lindrith B #2 Release Assessment

Collection Date: 3/9/2012 10:52:00 AM

Lab ID: 1203369-002

Matrix: MEOH (SOIL)

Received Date: 3/10/2012 10:40:00 AM

Analyses	Result	RL	Qual	Units	DF	Date Analyzed
EPA METHOD 8015B: DIESEL RANGE ORGANICS						Analyst: JMP
Diesel Range Organics (DRO)	1,100	100		mg/Kg	10	3/12/2012 10:28:36 AM
Surr DNOP	0	77.4-131	S	%REC	10	3/12/2012 10:28:36 AM
EPA METHOD 8015B: GASOLINE RANGE						Analyst: RAA
Gasoline Range Organics (GRO)	710	100		mg/Kg	20	3/12/2012 11:56:03 AM
Surr: BFB	177	69.7-121	S	%REC	20	3/12/2012 11:56:03 AM
EPA METHOD 8021B: VOLATILES						Analyst: RAA
Benzene	5.8	1.0		mg/Kg	20	3/12/2012 11:56:03 AM
Toluene	21	1.0		mg/Kg	20	3/12/2012 11:56:03 AM
Ethylbenzene	2.2	1.0		mg/Kg	20	3/12/2012 11:56:03 AM
Xylenes, Total	23	2.0		mg/Kg	20	3/12/2012 11:56:03 AM
Surr 4-Bromofluorobenzene	106	85.3-139		%REC	20	3/12/2012 11:56:03 AM

Qualifiers:

- *X Value exceeds Maximum Contaminant Level
- E Value above quantitation range
- J Analyte detected below quantitation limits
- R RPD outside accepted recovery limits
- S Spike Recovery outside accepted recovery limits

- B Analyte detected in the associated Method Blank
- H Holding times for preparation or analysis exceeded
- ND Not Detected at the Reporting Limit
- RL Reporting Detection Limit

Hall Environmental Analysis Laboratory, Inc.

Analytical Report

Lab Order 1203369

Date Reported: 3/13/2012

CLIENT: Animas Environmental Services

Client Sample ID: SC-4

Project: Lindrith B #2 Release Assessment

Collection Date: 3/9/2012 10:55:00 AM

Lab ID: 1203369-003

Matrix: MEOH (SOIL)

Received Date: 3/10/2012 10:40:00 AM

Analyses	Result	RL	Qual	Units	DF	Date Analyzed
EPA METHOD 8015B: DIESEL RANGE ORGANICS						Analyst: JMP
Diesel Range Organics (DRO)	510	100		mg/Kg	10	3/12/2012 10:06:11 AM
Surr: DNOP	0	77 4-131	S	%REC	10	3/12/2012 10:06:11 AM
EPA METHOD 8015B: GASOLINE RANGE						Analyst: RAA
Gasoline Range Organics (GRO)	3,600	250		mg/Kg	50	3/12/2012 12:24:44 PM
Surr: BFB	162	69 7-121	S	%REC	50	3/12/2012 12:24:44 PM
EPA METHOD 8021B: VOLATILES						Analyst: RAA
Benzene	20	2.5		mg/Kg	50	3/12/2012 12:24:44 PM
Toluene	170	2.5		mg/Kg	50	3/12/2012 12:24:44 PM
Ethylbenzene	23	2.5		mg/Kg	50	3/12/2012 12:24:44 PM
Xylenes, Total	220	5.0		mg/Kg	50	3/12/2012 12:24:44 PM
Surr: 4-Bromofluorobenzene	110	85.3-139		%REC	50	3/12/2012 12:24:44 PM

Qualifiers:	*X	Value exceeds Maximum Contaminant Level.	B	Analyte detected in the associated Method Blank
	E	Value above quantitation range	H	Holding times for preparation or analysis exceeded
	J	Analyte detected below quantitation limits	ND	Not Detected at the Reporting Limit
	R	RPD outside accepted recovery limits	RL	Reporting Detection Limit
	S	Spike Recovery outside accepted recovery limits		

QC SUMMARY REPORT

Hall Environmental Analysis Laboratory, Inc.

WO#: 1203369

13-Mar-12

Client: Animas Environmental Services
Project: Lindrith B #2 Release Assessment

Sample ID	MB-1039	SampType	MBLK	TestCode: EPA Method 8015B: Diesel Range Organics						
Client ID	PBS	Batch ID	1039	RunNo 1395						
Prep Date	3/12/2012	Analysis Date	3/12/2012	SeqNo. 39319		Units: mg/Kg				
Analyte	Result	PQL	SPK value	SPK Ref Val	%REC	LowLimit	HighLimit	%RPD	RPDLimit	Qual
Diesel Range Organics (DRO)	ND	10								
Surr: DNOP	8.5		10.00		84.5	77.4	131			

Sample ID	LCS-1039	SampType	LCS	TestCode: EPA Method 8015B: Diesel Range Organics						
Client ID	LCSS	Batch ID	1039	RunNo 1395						
Prep Date	3/12/2012	Analysis Date	3/12/2012	SeqNo: 39351		Units: mg/Kg				
Analyte	Result	PQL	SPK value	SPK Ref Val	%REC	LowLimit	HighLimit	%RPD	RPDLimit	Qual
Diesel Range Organics (DRO)	44	10	50.00	0	88.5	62.7	139			
Surr: DNOP	4.4		5.000		88.4	77.4	131			

Qualifiers:

*X Value exceeds Maximum Contaminant Level.
E Value above quantitation range
J Analyte detected below quantitation limits
R RPD outside accepted recovery limits

B Analyte detected in the associated Method Blank
H Holding times for preparation or analysis exceeded
ND Not Detected at the Reporting Limit
RL Reporting Detection Limit

QC SUMMARY REPORT

Hall Environmental Analysis Laboratory, Inc.

WO#: 1203369

13-Mar-12

Client: Animas Environmental Services
Project: Lindrith B #2 Release Assessment

Sample ID	1203229-001AMS	SampType.	MS	TestCode.	EPA Method 8015B: Gasoline Range					
Client ID	BatchQC	Batch ID:	986	RunNo:	1404					
Prep Date.	3/7/2012	Analysis Date:	3/12/2012	SeqNo:	40169	Units:	%REC			
Analyte	Result	PQL	SPK value	SPK Ref Val	%REC	LowLimit	HighLimit	%RPD	RPDLimit	Qual
Surr BFB	980		992.1		99.1	69.7	121			

Sample ID	1203229-001AMSD	SampType.	MSD	TestCode.	EPA Method 8015B: Gasoline Range					
Client ID	BatchQC	Batch ID:	986	RunNo:	1404					
Prep Date.	3/7/2012	Analysis Date:	3/12/2012	SeqNo:	40171	Units:	%REC			
Analyte	Result	PQL	SPK value	SPK Ref Val	%REC	LowLimit	HighLimit	%RPD	RPDLimit	Qual
Surr BFB	960		982.3		98.0	69.7	121	0	0	

Qualifiers:

*X Value exceeds Maximum Contaminant Level.
E Value above quantitation range
J Analyte detected below quantitation limits
R RPD outside accepted recovery limits

B Analyte detected in the associated Method Blank
H Holding times for preparation or analysis exceeded
ND Not Detected at the Reporting Limit
RL Reporting Detection Limit

QC SUMMARY REPORT

Hall Environmental Analysis Laboratory, Inc.

WO#: 1203369

13-Mar-12

Client: Animas Environmental Services
Project: Lindrith B #2 Release Assessment

Sample ID	1203230-001AMS	SampType	MS	TestCode	EPA Method 8021B: Volatiles					
Client ID:	BatchQC	Batch ID:	986	RunNo:	1404					
Prep Date:	3/7/2012	Analysis Date:	3/12/2012	SeqNo:	40186	Units:	%REC			
Analyte	Result	PQL	SPK value	SPK Ref Val	%REC	LowLimit	HighLimit	%RPD	RPDLimit	Qual
Surr. 4-Bromofluorobenzene	0.97		0.9747		99.0	85.3	139			

Sample ID	1203230-001AMSD	SampType	MSD	TestCode	EPA Method 8021B: Volatiles					
Client ID:	BatchQC	Batch ID:	986	RunNo:	1404					
Prep Date	3/7/2012	Analysis Date	3/12/2012	SeqNo:	40187	Units:	%REC			
Analyte	Result	PQL	SPK value	SPK Ref Val	%REC	LowLimit	HighLimit	%RPD	RPDLimit	Qual
Surr. 4-Bromofluorobenzene	0.95		0.9524		100	85.3	139	0	0	

Qualifiers:

*X Value exceeds Maximum Contaminant Level.
E Value above quantitation range
J Analyte detected below quantitation limits
R RPD outside accepted recovery limits

B Analyte detected in the associated Method Blank
H Holding times for preparation or analysis exceeded
ND Not Detected at the Reporting Limit
RL Reporting Detection Limit



Hall Environmental Analysis Laboratory
4901 Hawkins NE
Albuquerque, NM 87105
TEL: 505-345-3975 FAX: 505-345-410;
Website: www.hallenvironmental.com

Sample Log-In Check List

Client Name:	Animas Environmental	Work Order Number:	1203369
Received by/date:	<i>[Signature]</i> 03/12/12		
Logged By:	Anne Thome	3/10/2012 10:40:00 AM	<i>[Signature]</i>
Completed By:	Anne Thome	3/12/2012	<i>[Signature]</i>
Reviewed By:			

Chain of Custody

1. Were seals intact? Yes ☐ No ☐ Not Present ☒
2. Is Chain of Custody complete? Yes ☒ No ☐ Not Present ☐
3. How was the sample delivered? Courier

Log In

4. Coolers are present? (see 19. for cooler specific information) Yes ☒ No ☐ NA ☐
5. Was an attempt made to cool the samples? Yes ☒ No ☐ NA ☐
6. Were all samples received at a temperature of $>0^{\circ}\text{C}$ to 6.0°C ? Yes ☒ No ☐ NA ☐
7. Sample(s) in proper container(s)? Yes ☒ No ☐
8. Sufficient sample volume for indicated test(s)? Yes ☒ No ☐
9. Are samples (except VOA and ONG) properly preserved? Yes ☒ No ☐
10. Was preservative added to bottles? Yes ☐ No ☒ NA ☐
11. VOA vials have zero headspace? Yes ☐ No ☐ No VOA Vials ☒
12. Were any sample containers received broken? Yes ☒ No ☐
13. Does paperwork match bottle labels?
(Note discrepancies on chain of custody) Yes ☒ No ☐
14. Are matrices correctly identified on Chain of Custody? Yes ☒ No ☐
15. Is it clear what analyses were requested? Yes ☒ No ☐
16. Were all holding times able to be met?
(If no, notify customer for authorization.) Yes ☒ No ☐

of preserved bottles checked for pH: _____
(<2 or >12 unless noted)
Adjusted? _____
Checked by: _____

Special Handling (if applicable)

17. Was client notified of all discrepancies with this order? Yes ☐ No ☐ NA ☒

Person Notified:	_____	Date:	_____
By Whom:	_____	Via:	<input type="checkbox"/> eMail <input type="checkbox"/> Phone <input type="checkbox"/> Fax <input type="checkbox"/> In Person
Regarding:	_____		
Client Instructions:	_____		

18. Additional remarks:

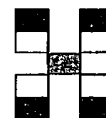
19. Cooler Information

Cooler No	Temp $^{\circ}\text{C}$	Condition	Seal Intact	Seal No	Seal Date	Signed By
1	3.2	Good	Yes			

<h1>Chain-of-Custody Record</h1>		Turn-Around Time:	
Client: <u>Animas Environmental Services</u>		<input type="checkbox"/> Standard <input checked="" type="checkbox"/> Rush <u>SAME DAY</u>	
Mailing Address: <u>104 E Conanche</u> <u>Farmington, NM 87401</u>		Project Name: <u>Lindrieth B#2 Release Assessm</u>	
Phone #: <u>505 564 2281</u>		Project #:	
email or Fax#: <u>ross@animasenvironmental.com</u>		Project Manager:	
QA/QC Package:		<u>Ross Kennemer</u>	
<input checked="" type="checkbox"/> Standard <input type="checkbox"/> Level 4 (Full Validation)		Sampler: <u>TAMU ROSS</u>	
Accreditation		On Ice: <input type="checkbox"/> Yes <input checked="" type="checkbox"/> No	
<input type="checkbox"/> NELAP <input type="checkbox"/> Other _____		Sample Temperature:	
<input type="checkbox"/> EDD (Type)			

☐ Standard

☒ Rush SAME DAY



www.hallenvironmental.com

4901 Hawkins NE - Albuquerque, NM 87109

Tel. 505-345-3975 Fax 505-345-4107

Analysis Request


[illegible]

Date: 3/9/12	Time: 1550	Relinquished by: Jamie Ross
-----------------	---------------	--------------------------------

Received by:	Date	Time
Christine Walter	3/9/12	1609

Remarks:
BILL TO CONOCO PHILLIPS
ANIMAS WILL FORWARD BILLING
INFO UPON RECEIPT FROM
CONOCO

Date:	Time:	Relinquished by:
3/2/12	1647	Mustafa Waleed

Received by:	Date	Time
	3/10/12	10:40