

District I
1625 N. French Dr., Hobbs, NM 88240
District II
811 S First St., Artesia, NM 88210
District III
1000 Rio Brazos Road, Aztec, NM 87410
District IV
1220 S. St. Francis Dr., Santa Fe, NM 87505

State of New Mexico
Energy Minerals and Natural Resources
Department
Oil Conservation Division
1220 South St. Francis Dr.
Santa Fe, NM 87505

Form C-144
Revised August 1, 2011

For temporary pits, closed-loop systems, and below-grade tanks, submit to the appropriate NMOCD District Office.
For permanent pits and exceptions submit to the Santa Fe Environmental Bureau office and provide a copy to the appropriate NMOCD District Office.

**Pit, Closed-Loop System, Below-Grade Tank, or
Proposed Alternative Method Permit or Closure Plan Application**

Type of action: ☐ Permit of a pit, closed-loop system, below-grade tank, or proposed alternative method
☒ Closure of a pit, closed-loop system, below-grade tank, or proposed alternative method
☐ Modification to an existing permit
☐ Closure plan only submitted for an existing permitted or non-permitted pit, closed-loop system, below-grade tank, or proposed alternative method

Instructions: Please submit one application (Form C-144) per individual pit, closed-loop system, below-grade tank or alternative request

Please be advised that approval of this request does not relieve the operator of liability should operations result in pollution of surface water, ground water or the environment. Nor does approval relieve the operator of its responsibility to comply with any other applicable governmental authority's rules, regulations or ordinances.

1.
Operator: Huntington Energy, L.L.C. OGRID #: 208706
Address: 908 N.W. 71st St., Oklahoma City, OK 73116
Facility or well name: Canyon Largo Unit #482
API Number: 30-039-31042 OCD Permit Number: _____
U/L or Qtr/Qtr P Section 3 Township 25N Range 7W County: Rio Arriba
Center of Proposed Design: Latitude 36.42418N Longitude -107.55694W NAD: ☐ 1927 ☒ 1983
Surface Owner: ☒ Federal ☐ State ☐ Private ☐ Tribal Trust or Indian Allotment

2.
☒ **Pit:** Subsection F or G of 19.15.17.11 NMAC
Temporary: ☒ Drilling ☐ Workover
☐ Permanent ☐ Emergency ☐ Cavitation ☐ P&A
☒ Lined ☐ Unlined Liner type: Thickness 20 mil ☒ LLDPE ☐ HDPE ☐ PVC ☐ Other _____
☐ String-Reinforced
Liner Seams: ☐ Welded ☐ Factory ☐ Other _____ Volume: 7000 bbl Dimensions: L 140' x W 65' x D 10'

RCVD SEP 24 '12
OIL CONS. DIV.
DIST. 3

3.
☐ **Closed-loop System:** Subsection H of 19.15.17.11 NMAC
Type of Operation: ☐ P&A ☐ Drilling a new well ☐ Workover or Drilling (Applies to activities which require prior approval of a permit or notice of intent)
☐ Drying Pad ☐ Above Ground Steel Tanks ☐ Haul-off Bins ☐ Other _____
☐ Lined ☐ Unlined Liner type: Thickness _____ mil ☐ LLDPE ☐ HDPE ☐ PVC ☐ Other _____
Liner Seams: ☐ Welded ☐ Factory ☐ Other _____

4.
☐ **Below-grade tank:** Subsection I of 19.15.17.11 NMAC
Volume: _____ bbl Type of fluid: _____
Tank Construction material: _____
☐ Secondary containment with leak detection ☐ Visible sidewalls, liner, 6-inch lift and automatic overflow shut-off
☐ Visible sidewalls and liner ☐ Visible sidewalls only ☐ Other _____
Liner type: Thickness _____ mil ☐ HDPE ☐ PVC ☐ Other _____

5.
☐ **Alternative Method:**
Submittal of an exception request is required. Exceptions must be submitted to the Santa Fe Environmental Bureau office for consideration of approval.

6.

Fencing: Subsection D of 19.15.17.11 NMAC (*Applies to permanent pits, temporary pits, and below-grade tanks*)

- ☐ Chain link, six feet in height, two strands of barbed wire at top (*Required if located within 1000 feet of a permanent residence, school, hospital, institution or church*)
- ☐ Four foot height, four strands of barbed wire evenly spaced between one and four feet
- ☐ Alternate. Please specify _____

7.

Netting: Subsection E of 19.15.17.11 NMAC (*Applies to permanent pits and permanent open top tanks*)

- ☐ Screen ☐ Netting ☐ Other _____
- ☐ Monthly inspections (If netting or screening is not physically feasible)

8.

Signs: Subsection C of 19.15.17.11 NMAC

- ☐ 12"x 24", 2" lettering, providing Operator's name, site location, and emergency telephone numbers
- ☒ Signed in compliance with 19.15.16.8 NMAC

9.

Administrative Approvals and Exceptions:

Justifications and/or demonstrations of equivalency are required. Please refer to 19.15.17 NMAC for guidance.

Please check a box if one or more of the following is requested, if not leave blank:

- ☐ Administrative approval(s): Requests must be submitted to the appropriate division district or the Santa Fe Environmental Bureau office for consideration of approval.
- ☐ Exception(s): Requests must be submitted to the Santa Fe Environmental Bureau office for consideration of approval.

10.

Siting Criteria (regarding permitting): 19.15.17.10 NMAC

Instructions: The applicant must demonstrate compliance for each siting criteria below in the application. Recommendations of acceptable source material are provided below. Requests regarding changes to certain siting criteria may require administrative approval from the appropriate district office or may be considered an exception which must be submitted to the Santa Fe Environmental Bureau office for consideration of approval. Applicant must attach justification for request. Please refer to 19.15.17.10 NMAC for guidance. Siting criteria does not apply to drying pads or above-grade tanks associated with a closed-loop system.

Ground water is less than 50 feet below the bottom of the temporary pit, permanent pit, or below-grade tank.

- NM Office of the State Engineer - iWATERS database search; USGS; Data obtained from nearby wells

☐ Yes ☐ No

Within 300 feet of a continuously flowing watercourse, or 200 feet of any other significant watercourse or lakebed, sinkhole, or playa lake (measured from the ordinary high-water mark).

- Topographic map; Visual inspection (certification) of the proposed site

☐ Yes ☐ No

Within 300 feet from a permanent residence, school, hospital, institution, or church in existence at the time of initial application. (*Applies to temporary, emergency, or cavitation pits and below-grade tanks*)

- Visual inspection (certification) of the proposed site; Aerial photo; Satellite image

☐ Yes ☐ No
☐ NA

Within 1000 feet from a permanent residence, school, hospital, institution, or church in existence at the time of initial application. (*Applies to permanent pits*)

- Visual inspection (certification) of the proposed site; Aerial photo; Satellite image

☐ Yes ☐ No
☐ NA

Within 500 horizontal feet of a private, domestic fresh water well or spring that less than five households use for domestic or stock watering purposes, or within 1000 horizontal feet of any other fresh water well or spring, in existence at the time of initial application.

- NM Office of the State Engineer - iWATERS database search; Visual inspection (certification) of the proposed site

☐ Yes ☐ No

Within incorporated municipal boundaries or within a defined municipal fresh water well field covered under a municipal ordinance adopted pursuant to NMSA 1978, Section 3-27-3, as amended.

- Written confirmation or verification from the municipality; Written approval obtained from the municipality

☐ Yes ☐ No

Within 500 feet of a wetland.

- US Fish and Wildlife Wetland Identification map; Topographic map; Visual inspection (certification) of the proposed site

☐ Yes ☐ No

Within the area overlying a subsurface mine.

- Written confirmation or verification or map from the NM EMNRD-Mining and Mineral Division

☐ Yes ☐ No

Within an unstable area.

- Engineering measures incorporated into the design; NM Bureau of Geology & Mineral Resources; USGS; NM Geological Society; Topographic map

☐ Yes ☐ No

Within a 100-year floodplain.

- FEMA map

☐ Yes ☐ No

11.

Temporary Pits, Emergency Pits, and Below-grade Tanks Permit Application Attachment Checklist: Subsection B of 19.15.17.9 NMAC**Instructions:** Each of the following items must be attached to the application. Please indicate, by a check mark in the box, that the documents are attached.

- ☐ Hydrogeologic Report (Below-grade Tanks) - based upon the requirements of Paragraph (4) of Subsection B of 19.15.17.9 NMAC
- ☐ Hydrogeologic Data (Temporary and Emergency Pits) - based upon the requirements of Paragraph (2) of Subsection B of 19.15.17.9 NMAC
- ☐ Siting Criteria Compliance Demonstrations - based upon the appropriate requirements of 19.15.17.10 NMAC
- ☐ Design Plan - based upon the appropriate requirements of 19.15.17.11 NMAC
- ☐ Operating and Maintenance Plan - based upon the appropriate requirements of 19.15.17.12 NMAC
- ☐ Closure Plan (Please complete Boxes 14 through 18, if applicable) - based upon the appropriate requirements of Subsection C of 19.15.17.9 NMAC and 19.15.17.13 NMAC
- ☐ Previously Approved Design (attach copy of design) API Number: _____ or Permit Number: _____

12.

Closed-loop Systems Permit Application Attachment Checklist: Subsection B of 19.15.17.9 NMAC**Instructions:** Each of the following items must be attached to the application. Please indicate, by a check mark in the box, that the documents are attached.

- ☐ Geologic and Hydrogeologic Data (only for on-site closure) - based upon the requirements of Paragraph (3) of Subsection B of 19.15.17.9
- ☐ Siting Criteria Compliance Demonstrations (only for on-site closure) - based upon the appropriate requirements of 19.15.17.10 NMAC
- ☐ Design Plan - based upon the appropriate requirements of 19.15.17.11 NMAC
- ☐ Operating and Maintenance Plan - based upon the appropriate requirements of 19.15.17.12 NMAC
- ☐ Closure Plan (Please complete Boxes 14 through 18, if applicable) - based upon the appropriate requirements of Subsection C of 19.15.17.9 NMAC and 19.15.17.13 NMAC
- ☐ Previously Approved Design (attach copy of design) API Number: _____
- ☐ Previously Approved Operating and Maintenance Plan API Number: _____ (Applies only to closed-loop system that use above ground steel tanks or haul-off bins and propose to implement waste removal for closure)

13.

Permanent Pits Permit Application Checklist: Subsection B of 19.15.17.9 NMAC**Instructions:** Each of the following items must be attached to the application. Please indicate, by a check mark in the box, that the documents are attached.

- ☐ Hydrogeologic Report - based upon the requirements of Paragraph (1) of Subsection B of 19.15.17.9 NMAC
- ☐ Siting Criteria Compliance Demonstrations - based upon the appropriate requirements of 19.15.17.10 NMAC
- ☐ Climatological Factors Assessment
- ☐ Certified Engineering Design Plans - based upon the appropriate requirements of 19.15.17.11 NMAC
- ☐ Dike Protection and Structural Integrity Design - based upon the appropriate requirements of 19.15.17.11 NMAC
- ☐ Leak Detection Design - based upon the appropriate requirements of 19.15.17.11 NMAC
- ☐ Liner Specifications and Compatibility Assessment - based upon the appropriate requirements of 19.15.17.11 NMAC
- ☐ Quality Control/Quality Assurance Construction and Installation Plan
- ☐ Operating and Maintenance Plan - based upon the appropriate requirements of 19.15.17.12 NMAC
- ☐ Freeboard and Overtopping Prevention Plan - based upon the appropriate requirements of 19.15.17.11 NMAC
- ☐ Nuisance or Hazardous Odors, including H₂S, Prevention Plan
- ☐ Emergency Response Plan
- ☐ Oil Field Waste Stream Characterization
- ☐ Monitoring and Inspection Plan
- ☐ Erosion Control Plan
- ☐ Closure Plan - based upon the appropriate requirements of Subsection C of 19.15.17.9 NMAC and 19.15.17.13 NMAC

14.

Proposed Closure: 19.15.17.13 NMAC**Instructions:** Please complete the applicable boxes, Boxes 14 through 18, in regards to the proposed closure plan.

- Type: ☐ Drilling ☐ Workover ☐ Emergency ☐ Cavitation ☐ P&A ☐ Permanent Pit ☐ Below-grade Tank ☐ Closed-loop System
- ☐ Alternative
- Proposed Closure Method: ☐ Waste Excavation and Removal
- ☐ Waste Removal (Closed-loop systems only)
- ☐ On-site Closure Method (Only for temporary pits and closed-loop systems)
- ☐ In-place Burial ☐ On-site Trench Burial
- ☐ Alternative Closure Method (Exceptions must be submitted to the Santa Fe Environmental Bureau for consideration)

15.

Waste Excavation and Removal Closure Plan Checklist: (19.15.17.13 NMAC) **Instructions:** Each of the following items must be attached to the closure plan. Please indicate, by a check mark in the box, that the documents are attached.

- ☐ Protocols and Procedures - based upon the appropriate requirements of 19.15.17.13 NMAC
- ☐ Confirmation Sampling Plan (if applicable) - based upon the appropriate requirements of Subsection F of 19.15.17.13 NMAC
- ☐ Disposal Facility Name and Permit Number (for liquids, drilling fluids and drill cuttings)
- ☐ Soil Backfill and Cover Design Specifications - based upon the appropriate requirements of Subsection H of 19.15.17.13 NMAC
- ☐ Re-vegetation Plan - based upon the appropriate requirements of Subsection I of 19.15.17.13 NMAC
- ☐ Site Reclamation Plan - based upon the appropriate requirements of Subsection G of 19.15.17.13 NMAC

16.

Waste Removal Closure For Closed-loop Systems That Utilize Above Ground Steel Tanks or Haul-off Bins Only: (19.15.17.13.D NMAC)**Instructions:** Please identify the facility or facilities for the disposal of liquids, drilling fluids and drill cuttings. Use attachment if more than two facilities are required.

Disposal Facility Name: _____ Disposal Facility Permit Number: _____

Disposal Facility Name: _____ Disposal Facility Permit Number: _____

Will any of the proposed closed-loop system operations and associated activities occur on or in areas that *will not* be used for future service and operations?
☐ Yes (If yes, please provide the information below) ☐ No
Required for impacted areas which will not be used for future service and operations:

- ☐ Soil Backfill and Cover Design Specifications - based upon the appropriate requirements of Subsection H of 19.15.17.13 NMAC
- ☐ Re-vegetation Plan - based upon the appropriate requirements of Subsection I of 19.15.17.13 NMAC
- ☐ Site Reclamation Plan - based upon the appropriate requirements of Subsection G of 19.15.17.13 NMAC

17.

Siting Criteria (regarding on-site closure methods only): 19.15.17.10 NMAC**Instructions:** Each siting criteria requires a demonstration of compliance in the closure plan. Recommendations of acceptable source material are provided below. Requests regarding changes to certain siting criteria may require administrative approval from the appropriate district office or may be considered an exception which must be submitted to the Santa Fe Environmental Bureau office for consideration of approval. Justifications and/or demonstrations of equivalency are required. Please refer to 19.15.17.10 NMAC for guidance.

- | | |
|---|--|
| Ground water is less than 50 feet below the bottom of the buried waste. | <input type="checkbox"/> Yes <input type="checkbox"/> No |
| - NM Office of the State Engineer - iWATERS database search; USGS; Data obtained from nearby wells | <input type="checkbox"/> NA |
| Ground water is between 50 and 100 feet below the bottom of the buried waste | <input type="checkbox"/> Yes <input type="checkbox"/> No |
| - NM Office of the State Engineer - iWATERS database search; USGS; Data obtained from nearby wells | <input type="checkbox"/> NA |
| Ground water is more than 100 feet below the bottom of the buried waste. | <input type="checkbox"/> Yes <input type="checkbox"/> No |
| - NM Office of the State Engineer - iWATERS database search; USGS; Data obtained from nearby wells | <input type="checkbox"/> NA |
| Within 300 feet of a continuously flowing watercourse, or 200 feet of any other significant watercourse or lakebed, sinkhole, or playa lake (measured from the ordinary high-water mark). | <input type="checkbox"/> Yes <input type="checkbox"/> No |
| - Topographic map; Visual inspection (certification) of the proposed site | |
| Within 300 feet from a permanent residence, school, hospital, institution, or church in existence at the time of initial application. | <input type="checkbox"/> Yes <input type="checkbox"/> No |
| - Visual inspection (certification) of the proposed site; Aerial photo; Satellite image | |
| Within 500 horizontal feet of a private, domestic fresh water well or spring that less than five households use for domestic or stock watering purposes, or within 1000 horizontal feet of any other fresh water well or spring, in existence at the time of initial application. | <input type="checkbox"/> Yes <input type="checkbox"/> No |
| - NM Office of the State Engineer - iWATERS database; Visual inspection (certification) of the proposed site | |
| Within incorporated municipal boundaries or within a defined municipal fresh water well field covered under a municipal ordinance adopted pursuant to NMSA 1978, Section 3-27-3, as amended. | <input type="checkbox"/> Yes <input type="checkbox"/> No |
| - Written confirmation or verification from the municipality; Written approval obtained from the municipality | |
| Within 500 feet of a wetland. | <input type="checkbox"/> Yes <input type="checkbox"/> No |
| - US Fish and Wildlife Wetland Identification map; Topographic map; Visual inspection (certification) of the proposed site | |
| Within the area overlying a subsurface mine. | <input type="checkbox"/> Yes <input type="checkbox"/> No |
| - Written confirmation or verification or map from the NM EMNRD-Mining and Mineral Division | |
| Within an unstable area. | <input type="checkbox"/> Yes <input type="checkbox"/> No |
| - Engineering measures incorporated into the design; NM Bureau of Geology & Mineral Resources; USGS; NM Geological Society; Topographic map | |
| Within a 100-year floodplain. | <input type="checkbox"/> Yes <input type="checkbox"/> No |
| - FEMA map | |

18.

On-Site Closure Plan Checklist: (19.15.17.13 NMAC) **Instructions:** Each of the following items must be attached to the closure plan. Please indicate, by a check mark in the box, that the documents are attached.

- ☐ Siting Criteria Compliance Demonstrations - based upon the appropriate requirements of 19.15.17.10 NMAC
- ☐ Proof of Surface Owner Notice - based upon the appropriate requirements of Subsection F of 19.15.17.13 NMAC
- ☐ Construction/Design Plan of Burial Trench (if applicable) based upon the appropriate requirements of 19.15.17.11 NMAC
- ☐ Construction/Design Plan of Temporary Pit (for in-place burial of a drying pad) - based upon the appropriate requirements of 19.15.17.11 NMAC
- ☐ Protocols and Procedures - based upon the appropriate requirements of 19.15.17.13 NMAC
- ☐ Confirmation Sampling Plan (if applicable) - based upon the appropriate requirements of Subsection F of 19.15.17.13 NMAC
- ☐ Waste Material Sampling Plan - based upon the appropriate requirements of Subsection F of 19.15.17.13 NMAC
- ☐ Disposal Facility Name and Permit Number (for liquids, drilling fluids and drill cuttings or in case on-site closure standards cannot be achieved)
- ☐ Soil Cover Design - based upon the appropriate requirements of Subsection H of 19.15.17.13 NMAC
- ☐ Re-vegetation Plan - based upon the appropriate requirements of Subsection I of 19.15.17.13 NMAC
- ☐ Site Reclamation Plan - based upon the appropriate requirements of Subsection G of 19.15.17.13 NMAC

19.

Operator Application Certification:

I hereby certify that the information submitted with this application is true, accurate and complete to the best of my knowledge and belief.

Name (Print): _____ Title: _____

Signature: _____ Date: _____

e-mail address: _____ Telephone: _____

20.

OCD Approval: ☐ Permit Application (including closure plan) ☒ Closure Plan (only) ☐ OCD Conditions (see attachment)

OCD Representative Signature: Joseph D. Kelly Approval Date: 10/6/2012

Title: Compliance Officer OCD Permit Number: _____

21.

Closure Report (required within 60 days of closure completion): Subsection K of 19.15.17.13 NMAC

Instructions: Operators are required to obtain an approved closure plan prior to implementing any closure activities and submitting the closure report. The closure report is required to be submitted to the division within 60 days of the completion of the closure activities. Please do not complete this section of the form until an approved closure plan has been obtained and the closure activities have been completed.

☒ Closure Completion Date: 5/13/2012

22.

Closure Method:

☐ Waste Excavation and Removal ☒ On-Site Closure Method ☐ Alternative Closure Method ☐ Waste Removal (Closed-loop systems only)
☐ If different from approved plan, please explain.

23.

Closure Report Regarding Waste Removal Closure For Closed-loop Systems That Utilize Above Ground Steel Tanks or Haul-off Bins Only:

Instructions: Please identify the facility or facilities for where the liquids, drilling fluids and drill cuttings were disposed. Use attachment if more than two facilities were utilized.

Disposal Facility Name: _____ Disposal Facility Permit Number: _____

Disposal Facility Name: _____ Disposal Facility Permit Number: _____

Were the closed-loop system operations and associated activities performed on or in areas that *will not* be used for future service and operations?

☐ Yes (If yes, please demonstrate compliance to the items below) ☐ No

Required for impacted areas which will not be used for future service and operations:

- ☐ Site Reclamation (Photo Documentation)
☐ Soil Backfilling and Cover Installation
☐ Re-vegetation Application Rates and Seeding Technique

24.

Closure Report Attachment Checklist: *Instructions: Each of the following items must be attached to the closure report. Please indicate, by a check mark in the box, that the documents are attached.*

- ☒ Proof of Closure Notice (surface owner and division)
☐ Proof of Deed Notice (required for on-site closure)
☒ Plot Plan (for on-site closures and temporary pits)
☐ Confirmation Sampling Analytical Results (if applicable)
☒ Waste Material Sampling Analytical Results (required for on-site closure)
☒ Disposal Facility Name and Permit Number
☒ Soil Backfilling and Cover Installation
☒ Re-vegetation Application Rates and Seeding Technique
☒ Site Reclamation (Photo Documentation)

On-site Closure Location: Latitude 36.4244 Longitude -107.55715 NAD: ☐ 1927 ☒ 1983

25.

Operator Closure Certification:

I hereby certify that the information and attachments submitted with this closure report is true, accurate and complete to the best of my knowledge and belief. I also certify that the closure complies with all applicable closure requirements and conditions specified in the approved closure plan.

Name (Print): Catherine Smith Title: Regulatory

Signature: Catherine Smith Date: 9/06/2012

e-mail address: csmith@huntingtonenergy.com Telephone: 405-840-9876

Submit To Appropriate District Office Two Copies District I 1625 N. French Dr., Hobbs, NM 88240 District II 811 S. First St., Artesia, NM 88210 District III 1000 Rio Brazos Rd., Aztec, NM 87410 District IV 1220 S. St. Francis Dr., Santa Fe, NM 87505		State of New Mexico Energy, Minerals and Natural Resources Oil Conservation Division 1220 South St. Francis Dr. Santa Fe, NM 87505				Form C-105 Revised August 1, 2011													
		1. WELL API NO. 30-039-31042																	
		2. Type of Lease <input type="checkbox"/> STATE <input type="checkbox"/> FEE <input checked="" type="checkbox"/> FED/INDIAN																	
		3. State Oil & Gas Lease No.																	
WELL COMPLETION OR RECOMPLETION REPORT AND LOG																			
4. Reason for filing: <input type="checkbox"/> COMPLETION REPORT (Fill in boxes #1 through #31 for State and Fee wells only) <input checked="" type="checkbox"/> C-144 CLOSURE ATTACHMENT (Fill in boxes #1 through #9, #15 Date Rig Released and #32 and/or #33; attach this and the plat to the C-144 closure report in accordance with 19.15.17.13.K NMAC)						5. Lease Name or Unit Agreement Name Canyon Largo Unit 6. Well Number: 482													
7. Type of Completion: <input checked="" type="checkbox"/> NEW WELL <input type="checkbox"/> WORKOVER <input type="checkbox"/> DEEPENING <input type="checkbox"/> PLUGBACK <input type="checkbox"/> DIFFERENT RESERVOIR <input type="checkbox"/> OTHER																			
8. Name of Operator Huntington Energy, L.L.C.						9. OGRID 208706													
10. Address of Operator						11. Pool name or Wildcat													
12. Location	Unit Ltr	Section	Township	Range	Lot	Feet from the	N/S Line	Feet from the	E/W Line	County									
Surface:																			
BH:																			
13. Date Spudded	14. Date T.D. Reached	15. Date Rig Released 11/08/2011		16. Date Completed (Ready to Produce)			17. Elevations (DF and RKB, RT, GR, etc.)												
18. Total Measured Depth of Well		19. Plug Back Measured Depth		20. Was Directional Survey Made?			21. Type Electric and Other Logs Run												
22. Producing Interval(s), of this completion - Top, Bottom, Name																			
23. CASING RECORD (Report all strings set in well)																			
CASING SIZE		WEIGHT LB./FT.		DEPTH SET		HOLE SIZE		CEMENTING RECORD		AMOUNT PULLED									
24. LINER RECORD						25. TUBING RECORD													
SIZE	TOP	BOTTOM	SACKS CEMENT	SCREEN		SIZE	DEPTH SET		PACKER SET										
26. Perforation record (interval, size, and number)						27. ACID, SHOT, FRACTURE, CEMENT, SQUEEZE, ETC. <table border="1" style="width:100%; border-collapse: collapse;"> <tr> <th style="width: 50%;">DEPTH INTERVAL</th> <th style="width: 50%;">AMOUNT AND KIND MATERIAL USED</th> </tr> <tr><td> </td><td> </td></tr> <tr><td> </td><td> </td></tr> <tr><td> </td><td> </td></tr> <tr><td> </td><td> </td></tr> </table>				DEPTH INTERVAL	AMOUNT AND KIND MATERIAL USED								
DEPTH INTERVAL	AMOUNT AND KIND MATERIAL USED																		
28. PRODUCTION																			
Date First Production		Production Method (<i>Flowing, gas lift, pumping - Size and type pump</i>)				Well Status (<i>Prod. or Shut-in</i>)													
Date of Test	Hours Tested	Choke Size	Prod'n For Test Period	Oil - Bbl	Gas - MCF	Water - Bbl.	Gas - Oil Ratio												
Flow Tubing Press.	Casing Pressure	Calculated 24-Hour Rate	Oil - Bbl.	Gas - MCF	Water - Bbl.	Oil Gravity - API - (<i>Corr.</i>)													
29. Disposition of Gas (<i>Sold, used for fuel, vented, etc.</i>)							30. Test Witnessed By												
31. List Attachments																			
32. If a temporary pit was used at the well, attach a plat with the location of the temporary pit.																			
33. If an on-site burial was used at the well, report the exact location of the on-site burial:																			
Latitude				Longitude			NAD 1927 1983												
I hereby certify that the information shown on both sides of this form is true and complete to the best of my knowledge and belief																			
Signature <i>Catherine Smith</i>			Printed Name Catherine Smith		Title Regulatory		Date 9/06/2012												
E-mail Address																			

DISTRICT I
1625 N. French Dr., Hobbs, N.M. 88240

DISTRICT II
1301 W. Grand Ave., Artesia, N.M. 88210

DISTRICT III
1000 Rio Brazos Rd., Aztec, N.M. 87410

DISTRICT IV
1220 South St. Francis Dr., Santa Fe, NM 87505

State of New Mexico
Energy, Minerals & Natural Resources Department
OIL CONSERVATION DIVISION
1220 South St. Francis Dr.
Santa Fe, NM 87505

Form C-102
Revised July, 16, 2010
Submit one copy to appropriate
District Office

☐ AMENDED REPORT

WELL LOCATION AND ACREAGE DEDICATION PLAT

¹ API Number 30-039-31042		² Pool Code 71599	³ Pool Name Basin Dakota
⁴ Property Code 32660	⁵ Property Name CANYON LARGO UNIT		⁶ Well Number 482
⁷ GRID No. 208706	⁸ Operator Name HUNTINGTON ENERGY, LLC		⁹ Elevation 6806'

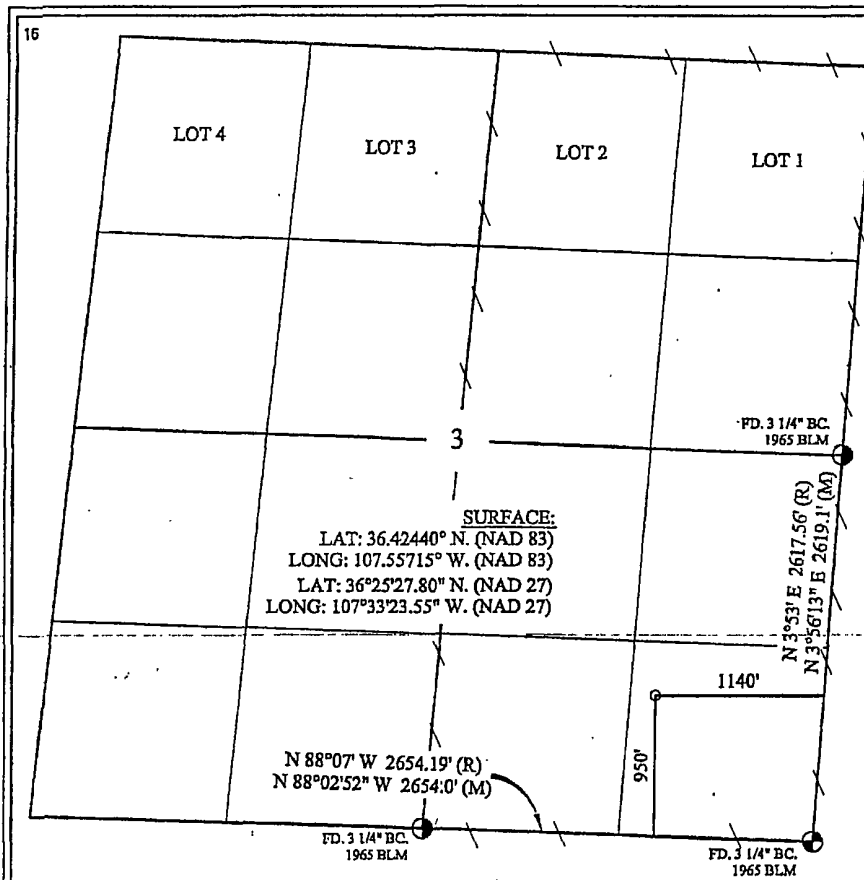
¹⁰ Surface Location

UL or lot no.	Section	Township	Range	Lot Idn	Feet from the	North/South line	Feet from the	East/West line	County
P	3	25-N	7-W		950	SOUTH	1140	EAST	RIO ARriba

¹¹ Bottom Hole Location If Different From Surface

UL or lot no.	Section	Township	Range	Lot Idn	Feet from the	North/South line	Feet from the	East/West line	County
¹² Dedicated Acres DK - E/320					¹³ Joint or Infill		¹⁴ Consolidation Code		¹⁵ Order No.

NO ALLOWABLE WILL BE ASSIGNED TO THIS COMPLETION UNTIL ALL INTERESTS HAVE BEEN CONSOLIDATED
OR A NON-STANDARD UNIT HAS BEEN APPROVED BY THE DIVISION



¹⁷ OPERATOR CERTIFICATION

I hereby certify that the information contained herein is true and complete to the best of my knowledge and belief, and that this organization either owns a working interest or unleased mineral interest in the land including the proposed bottom hole location or has a right to drill this well at this location pursuant to a contract with an owner of such a mineral or working interest, or to a voluntary pooling agreement or a compulsory pooling order heretofore entered by the division.

Catherine Smith 4/4/11
Signature Date

Catherine Smith

Printed Name

csmith@huntingtonenergy.com

E-mail Address

¹⁸ SURVEYOR CERTIFICATION

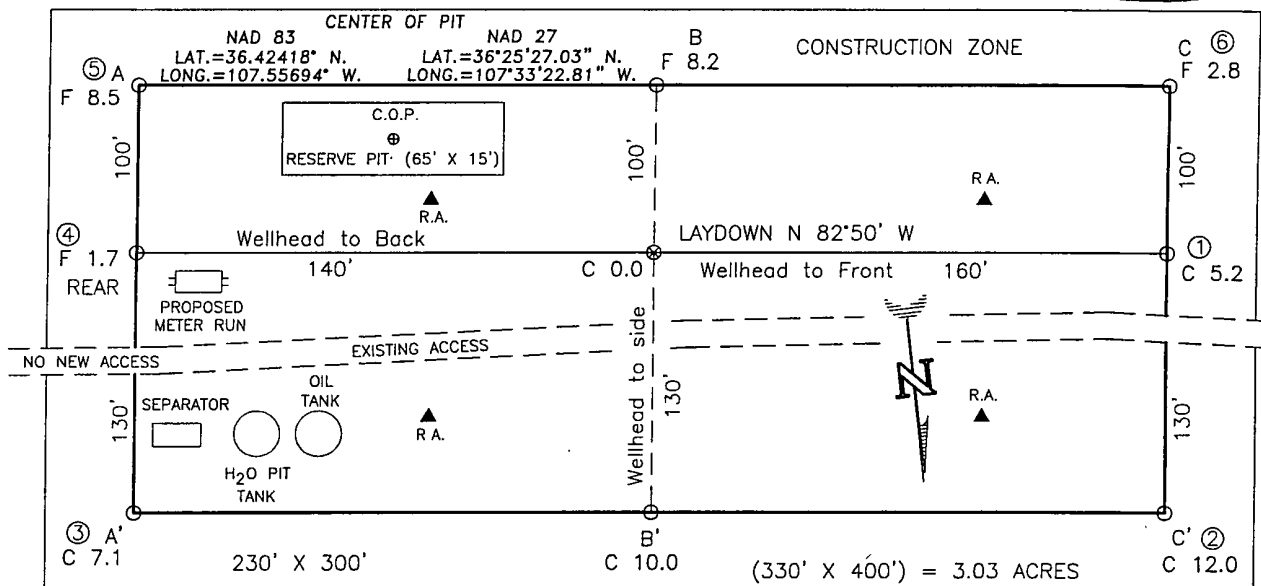
I hereby certify that the well location shown on this plat was plotted from field notes of actual surveys made by me or under my supervision, and that the same is true and correct to the best of my belief.

JERRY A. RUSH
NEW MEXICO
REGISTERED PROFESSIONAL LAND SURVEYOR
8894
01-11

Certificate Number

HUNTINGTON ENERGY, LLC
 CANYON LARGO UNIT No. 482, 950 FSL 1140 FEL
 SECTION 3, T-25-N, R-7-W, N.M.P.M., RIO ARRIBA COUNTY, N.M.
 GROUND ELEVATION: 6806, DATE: JUNE 1, 2005

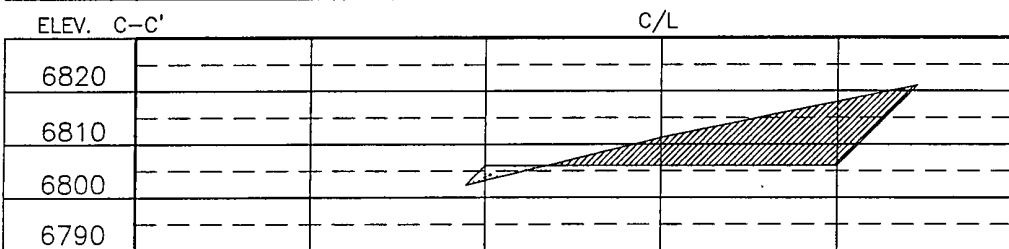
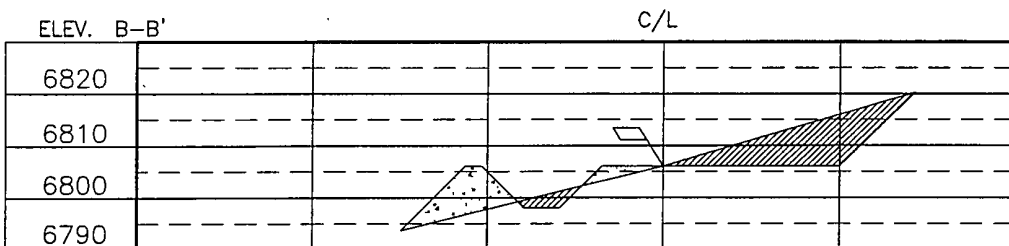
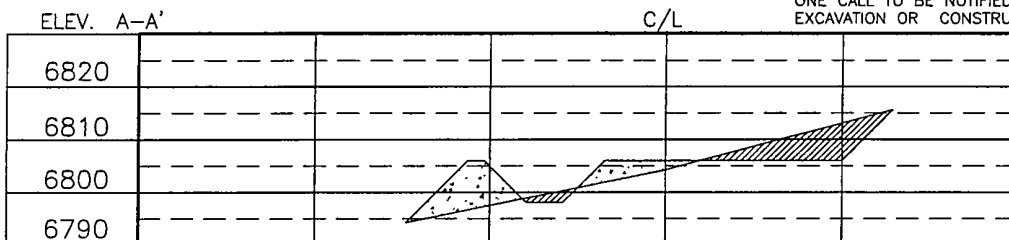
NAD 83
 LAT. = 36.42440° N
 LONG. = 107.55715° W
 NAD 27
 LAT. = 36°25'27.80" N
 LONG. = 107°33'23.55" W



RESERVE PIT DIKE: TO BE 8' ABOVE DEEP SIDE (OVERFLOW - 3' WIDE AND 1' ABOVE SHALLOW SIDE).
 BLOW PIT: OVERFLOW PIPE HALFWAY BETWEEN TOP AND BOTTOM AND TO EXTEND OVER PLASTIC LINER AND INTO BLOW PIT.

NOTE:

DAGGETT ENTERPRISES, INC. IS NOT LIABLE FOR UNDERGROUND UTILITIES OR PIPELINES. *NEW MEXICO ONE CALL TO BE NOTIFIED 48 HOURS PRIOR TO EXCAVATION OR CONSTRUCTION.



NOTE: CONTRACTOR SHOULD CALL ONE-CALL FOR LOCATION OF ANY MARKED OR UNMARKED BURIED PIPELINES OR CABLES ON WELL PAD AND OR ACCESS ROAD AT LEAST TWO (2) WORKING DAYS PRIOR TO CONSTRUCTION.

REVISION:	DATE:	REVISED BY:
ADDED TANK BATTERY	04/01/11	G.V.
ADD C.O.P.	9/24/10	G.V.

Daggett Enterprises, Inc.
 Surveying and Oil Field Services
 P.O. Box 510 • Farmington, NM 87499
 Phone (505) 326-1772 • Fax (505) 326-6019
 NEW MEXICO L.S. No. 8894
 DWG FILE: HTG040_CFB
 DATE: 7/12/05

DRAWN BY: B.L.
 ROW# HTG040

Cathy Smith

From: Cathy Smith
Sent: Tuesday, May 01, 2012 10:09 AM
To: brandon.powell@state.nm.us; mark_kelly@blm.gov
Subject: Notice of Pit Closure: Canyon Largo Unit # 482 & 505

Notice of Pit Closure for the above referenced wells as per NMOCD rule. The pits will be closed in the next week or two:

Canyon Largo Unit #482

NMSF078881
API#: 30-039-31042
SESE Sec 3-T25N-R7W
950 FSL & 1140 FEL
Lat: 37.32028N; Long: 108.64028W
Rio Arriba Co., NM
Rig Release: 11/08/11

Canyon Largo Unit #505

NMSF078879
API#: 30-039-31097
NENE Sec 23-T25N-R7W
645' FNL & 199' FEL
Lat: 36.39099N; Lat: 107.53555W
Rio Arriba Co., NM
Rig Release: 2/03/12

Cathy Smith
Huntington Energy, L.L.C.
908 N.W. 71st St.
Oklahoma City, OK 73116
(405) 840-9876 ext. 129



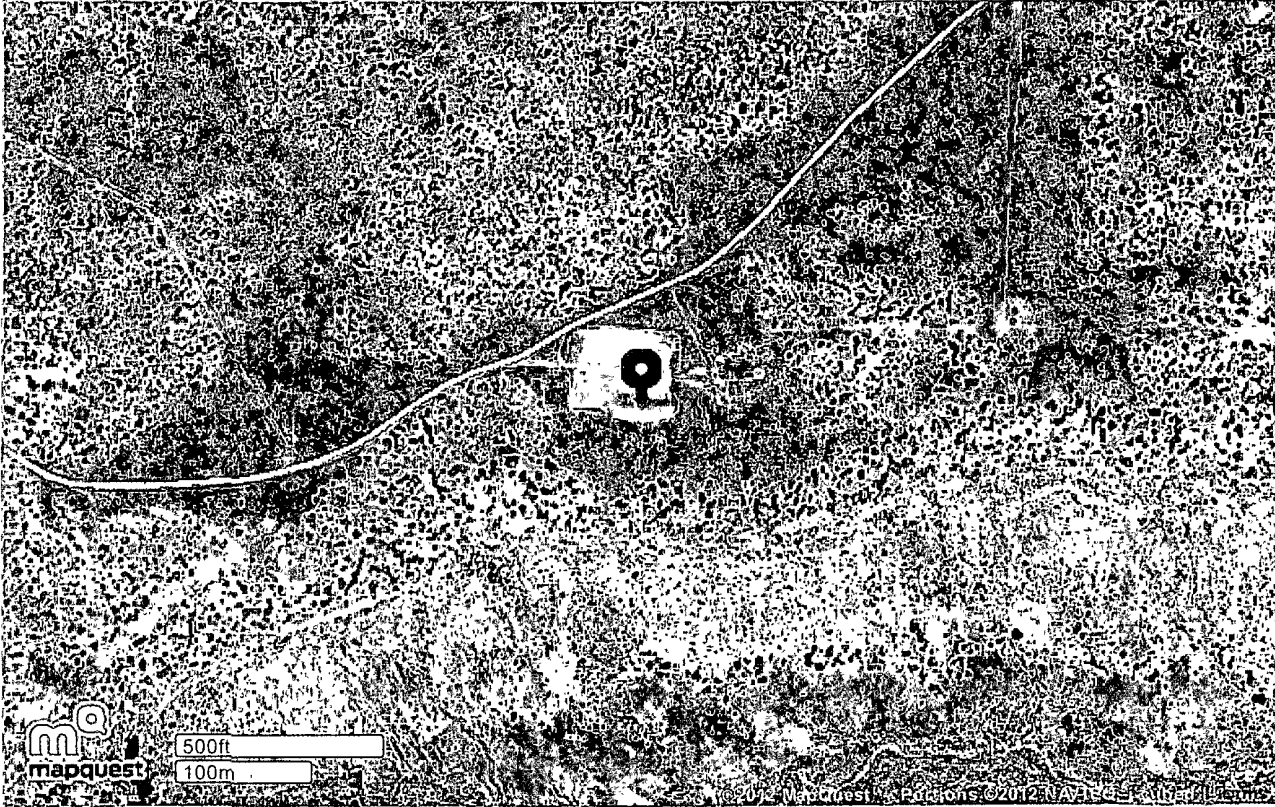
Map of:

**Latitude: 36.42418 Longitude:
-107.55694**

Dulce, NM 87528

Notes

Canyon Largo Unit #482



©2012 MapQuest, Inc. Use of directions and maps is subject to the MapQuest Terms of Use. We make no guarantee of the accuracy of their content, road conditions or route usability. You assume all risk of use. [View Terms of Use](#)

**Canyon Largo Unit #482
Huntington Energy, L.L.C.
San Juan Basin-Canyon Largo Unit
Pit Closure Plan**

In accordance with Rule 19.15.17.12 NMAC the following information describes the closure requirements of temporary pits on Huntington Energy, L.L.C. (HE) locations. This is HE's standard procedure for all temporary pits. A separate plan will be submitted for any temporary pit which does not conform to this plan.

All closure activities will include proper documentation and be available for review upon request and will be submitted to OCD within 60 days of closure of pit. Closure report will be filed on C-144 and include the following:

- Details on Capping and Covering, where applicable.
- Plot Plan (Pit Diagram)-**C102 w/pit on diagram-Submitted**
- Inspection Reports-**attached**
- Sampling Results-**Envirotech-Submitted with C-144 Pit Closure**
- C-105- **Submitted with C-144 Pit Closure**
- Copy of Deed Notice will be filed with County Clerk- **N/A**

General Plan:

1. All free standing liquids will be removed at the start of the pit closure process from the pit and disposed of in a division-approved facility or recycle, reuse or reclaim the liquids in a manner that the appropriate division district office approves. The facilities to be used for liquids will be IEI – NM-010010B and IEI will be used for solids (#01001010B). **All recovered liquids were disposed of at Basin Disposal and solids were sent to IEI.**
2. The preferred method of closure for all temporary pits will be on-site burial, assuming that all the criteria listed in sub-section (B) of 19.15.17.13 are met. **Pit was closed using onsite burial.**
3. The surface owner shall be notified of HE's closing of the temporary pit.- **Closure notification was sent via email to BLM/NMOCD-certified mail not required for Federal Land and BLM/NMOCD.**
4. Within 6 months of the rig off status occurring, HE will ensure that the temporary pits are closed, re-contoured and reseeded. **Compliant with rule.**
5. Notice of Closure will be given prior to closure to the Aztec Division office between 72 hours and one week via email, or verbally. The notification of closure will include the following:
 - i. Operator's name
 - ii. Location by Unit Letter, Section, Township, and Range, Well name and API number.**Notification sent – filed with C-144 Pit Closure.**
6. Liner of temporary pit shall be removed above "mud level" after stabilization. Removal of liner will consist of manually or mechanically cutting liner at mud level and removing all remaining liner. Care will be taken to remove all of the liner. All excessive liner will be disposed of at the San Juan County Landfill located on CR 3100. **Liner was removed above "mud level". Liner was removed by manually cutting liner at mud level 7 removing all remaining liner. All excessive liner was disposed of at Landfill.**
7. Pit contents shall be mixed with non-waste containing earthen material in order to achieve the solidification process. The solidification process will be accomplished using a combination of natural drying and mechanically mixing. Pit contents will be mixed with non-waste, earthen material to a consistency that is deemed as safe and stable. The mixing ratio shall not exceed 3 parts clean soil to 1 part pit contents. **Pit contents were mixed with non-waste, earthen material that is safe & stable. The solidification process used a combination of natural drying and mechanically mixing. The mixing ratio was approximately 3:1.**
8. A five point composite sample will be taken of the pit using sampling tools and all samples tested per Subsection B of 19.15.17.13(B)(1)(b). In the event that the criteria are not met, all contents will be handled per Subparagraph (a) of Paragraph (1) of Subsection B of 19.15.17.13 i.e., dig and haul. **A five point composite sample was taken of the pit using sampling tools. All samples were tested per Subsection B 19.15.17.1 3(B)(1)(b). Results filed with C-144.**

Components	Test Method	Limit (mg/kg)
Benzene	EPA SW-846 8021B or 8260B	0.2
BTEX	EPA SW-846 8021B or 8260B	50
TPH	EPA SW-846 418.1	2500
GRO/DRO	EPA SW-846 8015M	500
Chlorides	EPA 300.1	1000/500

9. Upon completion of solidification and testing standards being passed, the pit area will be backfilled with compacted, non-waste containing earthen material. A minimum of four feet of cover shall be achieved and the cover shall include one foot of suitable material to establish vegetation at the site, or the background thickness of topsoil, whichever is greater. If standard testing fails, HE will dig and haul all contents pursuant to 19.15.17.13.i.a. After doing so, confirmation sampling will be conducted to ensure a release has not occurred. **Pit material passed testing standards. The pit was then backfilled with compacted, non-waste containing earthen material.**
10. During the stabilization process, if the liner is ripped by equipment, the Aztec OCD office will be notified within 48 hours and the liner will be repaired if possible. If the liner can not be repaired, then all contents will be excavated and removed. **Liner was not damaged in the pit closure.**
11. Dig and Haul Material will be transported to IEI (Permit # 010010B). **Not required.**
12. Re-contouring of location will match fit, shape, line, form and texture of the surrounding. Reshaping will include drainage control, prevent ponding, and prevent erosion. Natural drainages will be unimpeded and water bars and/or silt traps will be placed in areas where needed to prevent erosion on a large scale. Final re-contour shall have a uniform appearance with smooth surface, fitting the natural landscape. **Pit area was re-contoured to match fit, shape, line form and texture of surroundings. Re-contour is uniform in appearance with smooth surface – natural landscape.**
13. Notification will be sent to the OCD when the reclaimed area is seeded. **C-144 pit Closure Notice filed 5/01/2012**
14. HE shall seed the disturbed areas the first growing season after the operator closes the pit. Seeding will be accomplished via drilling on the contour whenever practical or by other division-approved methods. BLM stipulated seed mixes will be used on federal lands. Vegetative cover will equal 70% of the native perennial vegetative cover (unimpacted) consisting of at least three native plant species, including at least one grass, but not including noxious weeds, and maintain that cover through two successive growing seasons. Repeated seeding or planting will be continued until successful vegetative growth occurs.

Type	Variety or Cultivator	PLS/A
Western Wheatgrass	Arriba	3.0
Indian Ricegrass	Paloma or Rimrock	3.0
Slender Wheatgrass	San Luis	2.0
Crested Wheatgrass	Hy-crest	3.0
Bottlebrush Squirreltail	Unknown	2.0
Four-wing Saltbrush	Delar	0.25

Species shall be planted in pounds of pure live seed per acre:

Present Pure Live Seed (PLS) = Purity X Germination/100

Two lots of seed can be compared on the basis of PLS as follows:

Source No. One (poor quality)

Purity 50 percent

Germination 40 percent

Percent PLS 20 percent

5 lb bulk seed required to make

1 lb PLS

Source No. two (better quality)

Purity 80 percent

Germination 63 percent

Percent PLS 50 percent

2 lb bulk seed required to make

1 lb PLS

The seeding above was used in 5/2012. After two successive growing seasons, HE will check for vegetative growth. If not successful, repeated seeding will be done.

15. The temporary pit will be located with a steel marker, no less than four inches in diameter, cemented in a hole three feet deep in the center of the onsite burial upon the abandonment of all the wells on the pad. The marker will be flush with the ground to allow access of the active well pad and for safety concerns. The marker will include a threaded collar to be used for future abandonment. The top of the marker will contain a welded steel 12" square plate that indicates the onsite burial of the temporary pit. The plate will be easily removable and a four foot tall riser will be threaded into the top of the collar marker and welded around the base with the operator's information at the time all wells on the pad are abandoned. The operator's information will include the following: Operator Name, Lease Name, Well Name and Number, Unit Number, Section, Township, Range and an indicator that the marker is an onsite burial location. **Steel marker was installed in the temporary pit, no less than four inches in diameter, cemented in a hole, 3 feet deep in center. Marker is flush with the ground to allow access of the active well pad. The top of the marker contains a welded steel 12" square plate that indicates the onsite burial of the temp pit. Operator name, Lease Name, Well Name & number, Section, Township and Range are all listed on the plate as an onsite burial location.**

**Huntington Energy, L.L.C.
Canyon Largo Unit #482
Sec 3, T25N-R7W
Rio Arriba Co., NM**

Soil Backfilling and Cover Installation

Upon completion of solidification and testing standards being passed (see attached test results) a minimum of 4 ft of cover is achieved including a suitable layer of material to establish vegetation at the site. All re-contouring of location will match fit shape, line, and texture of the surrounding area.

Re-Vegetation and Seeding Technique

Seeding shall commence on or about April 1st, or the first available growing season barring weather. BLM stipulated seed mixes will be used on federal lands. Vegetative cover will equal 70% of the native perennial vegetative cover consisting of at least three native plant species, including at least one grass, and maintain that cover through two successive growing seasons. Repeated seeding or planting will be continued until successful growth occurs.

Temporary Pit Marker

A steel marker will be placed at the center of the on-site burial. The steel marker will not be less than 4" in diameter and be cemented in a 3' hole. Marker shall extend 4' above ground level. Engraved into the marker will be the operator's name, and legal location. This marker shall not be removed. Note: during active operations, a ground level marker will be employed due to safety concerns; upon abandonment, the 4" x 4' marker will be employed.

Disposal Facility

Facility Name: IEI
Permit #: NM-010010B



Report Summary

Client: Huntington Energy LLC

Chain of Custody Number: 13901

Samples Received: 05-03-12

Job Number: 06111-0002

Sample Number(s): 61979

Project Name/Location: Canyon Largo Unit #482

Entire Report Reviewed By:

A handwritten signature in black ink, appearing to be 'J. E.', written over a horizontal line.

Date:

5/11/12

The analytical results in this report are based upon information supplied by you, the client, and are for your exclusive use. If you have any questions regarding this data package, please do not hesitate to call.

Client:	Huntington Energy LLC	Project #:	06111-0002
Sample ID:	Pit Closure	Date Reported:	05-10-12
Laboratory Number:	61979	Date Sampled:	05-02-12
Chain of Custody:	13901	Date Received:	05-03-12
Sample Matrix:	Sludge	Date Analyzed:	05-10-12
Preservative:	Cool	Date Extracted:	05-03-12
Condition:	Intact	Analysis Requested:	BTEX
		Dilution:	50

Parameter	Concentration (ug/Kg)	Det. Limit (ug/Kg)
Benzene	43.6	10.0
Toluene	366	10.0
Ethylbenzene	246	10.0
p,m-Xylene	2,180	10.0
o-Xylene	649	10.0
Total BTEX	3,480	

ND - Parameter not detected at the stated detection limit.

Surrogate Recoveries:	Parameter	Percent Recovery
	Fluorobenzene	100 %
	1,4-difluorobenzene	101 %
	Bromochlorobenzene	101 %

References: Method 5030B, Purge-and-Trap, Test Methods for Evaluating Solid Waste, SW-846, USEPA, December 1996.

Method 8021B, Aromatic Volatile Organics, Test Methods for Evaluating Solid Waste, SW-846, USEPA, December 1996.

Comments: Canyon Largo Unit #482

Client:	N/A	Project #:	N/A
Sample ID:	0510BCAL QA/QC	Date Reported:	05-10-12
Laboratory Number:	61979	Date Sampled:	N/A
Sample Matrix:	Soil	Date Received:	N/A
Preservative:	N/A	Date Analyzed:	05-10-12
Condition:	N/A	Analysis:	BTEX
		Dilution:	50

Calibration and Detection Limits (ug/L)	I-Cal RF	C-Cal RF	%Diff	Blank Conc	Detect. Limit
	Accept. Range 0-15%				
Benzene	4.9062E-06	4.9062E-06	0.000	ND	0.2
Toluene	4.7712E-06	4.7712E-06	0.000	ND	0.2
Ethylbenzene	5.3882E-06	5.3882E-06	0.000	ND	0.2
p,m-Xylene	3.9893E-06	3.9893E-06	0.000	ND	0.2
o-Xylene	5.6287E-06	5.6287E-06	0.000	ND	0.2

Duplicate Conc. (ug/Kg)	Sample	Duplicate	%Diff	Accept Range	Detect. Limit
Benzene	43.6	43.8	0.00	0 - 30%	10
Toluene	366	370	0.01	0 - 30%	10
Ethylbenzene	246	258	0.05	0 - 30%	10
p,m-Xylene	2180	2220	0.02	0 - 30%	10
o-Xylene	649	671	0.03	0 - 30%	10

Spike Conc. (ug/Kg)	Sample	Amount Spiked	Spiked Sample	% Recovery	Accept Range
Benzene	43.6	2500	2880	113	39 - 150
Toluene	366	2500	3530	123	46 - 148
Ethylbenzene	246	2500	3550	129	32 - 160
p,m-Xylene	2180	5000	8150	114	46 - 148
o-Xylene	649	2500	3810	121	46 - 148

ND - Parameter not detected at the stated detection limit.

Dilution: Spike and spiked sample concentration represent a dilution proportional to sample dilution.

References: Method 5030B, Purge-and-Trap, Test Methods for Evaluating Solid Waste, SW-846, USEPA, December 1996.
 Method 8021B, Aromatic and Halogenated Volatiles by Gas Chromatography Using Photoionization and/or Electrolytic Conductivity Detectors, SW-846, USEPA December 1996.

Comments: QA/QC for Samples 61979-61980, 61982, 61997-62001



EPA METHOD 418.1
TOTAL PETROLEUM HYDROCARBONS

Client:	Huntington Energy LLC	Project #:	06111-0002
Sample ID:	Pit Closure	Date Reported:	05-08-12
Laboratory Number:	61979	Date Sampled:	05-02-12
Chain of Custody No:	13901	Date Received:	05-03-12
Sample Matrix:	Sludge	Date Extracted:	05-04-12
Preservative:	Cool	Date Analyzed:	05-04-12
Condition:	Intact	Analysis Needed:	TPH-418.1

Parameter	Concentration (mg/kg)	Det. Limit (mg/kg)
Total Petroleum Hydrocarbons	1,180	7.4

ND = Parameter not detected at the stated detection limit.

References: Method 418.1, Petroleum Hydrocarbons, Total Recoverable, Chemical Analysis of Water and Waste, USEPA Storet No. 4551, 1978.

Comments: Canyon Largo Unit #482



EPA METHOD 418.1
TOTAL PETROLEUM HYDROCARBONS
QUALITY ASSURANCE REPORT

Client:	QA/QC	Project #:	N/A
Sample ID:	QA/QC	Date Reported:	05-08-12
Laboratory Number:	05-04-TPH.QA/QC 61979	Date Sampled:	N/A
Sample Matrix:	Freon-113	Date Analyzed:	05-04-12
Preservative:	N/A	Date Extracted:	05-04-12
Condition:	N/A	Analysis Needed:	TPH

Calibration	I-Cal Date	C-Cal Date	I-Cal RF	C-Cal RF	% Difference	Accept Range
	04-26-12	05-04-12	1,850	1,720	7.0%	+/- 10%

Blank Conc. (mg/Kg)	Concentration	Detection Limit
TPH	ND	7.4

Duplicate Conc. (mg/Kg)	Sample	Duplicate	% Difference	Accept Range
TPH	1,180	1,183	0.3%	+/- 30%

Spike Conc. (mg/Kg)	Sample	Spike Added	Spike Result	% Recovery	Accept Range
TPH	1,180	2,000	3,250	102%	80 - 120%

ND = Parameter not detected at the stated detection limit.

References: Method 418.1, Petroleum Hydrocarbons, Total Recoverable, Chemical Analysis of Water and Waste, USEPA Storet No. 4551, 1978.

Comments: QA/QC for Samples 61979-61980.

Client:	Huntington Energy LLC	Project #:	06111-0002
Sample ID:	Pit Closure	Date Reported:	05-08-12
Lab ID#:	61979	Date Sampled:	05-02-12
Sample Matrix:	Sludge	Date Received:	05-03-12
Preservative:	Cool	Date Analyzed:	05-04-12
Condition:	Intact	Chain of Custody:	13901

Parameter	Concentration (mg/Kg)
-----------	-----------------------


Total Chloride**920**

Reference: U.S.E.P.A., 4500B, "Methods for Chemical Analysis of Water and Wastes", 1983.
Standard Methods For The Examination of Water And Waste Water", 18th ed., 1992.

Comments: **Canyon Largo Unit #482**

CHAIN OF CUSTODY RECORD

13901

Client: <i>Huntington Energy LLC</i>			Project Name / Location: <i>Canyon Largo Unit #482</i>			ANALYSIS / PARAMETERS																
Email results to: <i>Cathy</i> <i>Csmith@huntingtonenergy.com</i>			Sampler Name: <i>Pit</i>																			
Client Phone No.: <i>Ron Lackey</i> <i>(505) 793-7063</i>			Client No.: <i>06111-0002</i>																			
Sample No./ Identification	Sample Date	Sample Time	Lab No.	No./Volume of Containers	Preservative			TPH (Method 8015)	BTEX (Method 8021)	VOC (Method 8260)	PCRA 8 Metals	Cation / Anion	RCI	TCLP with H/P	CO Table 910-1	TPH (418.1)	CHLORIDE			Sample Cool	Sample Intact	
					HgCl ₂	HCl																
<i>Pit closure</i>	<i>5/2/12</i>	<i>1:44p</i>	<i>61979</i>	<i>40Z</i>				<i>✓</i>	<i>✓</i>								<i>✓</i>	<i>✓</i>			<i>✓</i>	<i>✓</i>
Relinquished by: (Signature) <i>Kevin Gagnier (Halo Services)</i>				Date <i>5/3/12</i>	Time <i>9:29</i>	Received by: (Signature) <i>Alanna Muzzi</i>				Date <i>5/3/12</i>	Time <i>9:29</i>											
Relinquished by: (Signature)						Received by: (Signature)																
Sample Matrix Soil <input checked="" type="checkbox"/> Solid <input type="checkbox"/> Sludge <input checked="" type="checkbox"/> Aqueous <input type="checkbox"/> Other <input type="checkbox"/>																						
<input type="checkbox"/> Sample(s) dropped off after hours to secure drop off area.																						

5795 US Highway 64 • Farmington, NM 87401 • 505-632-0615 • Three Springs • 65 Mercado Street, Suite 115, Durango, CO 81301 • laboratory@envirotech-inc.com

HE Pit Inspection Log:

Canyon Largo Unit #482

API#: 30-039-31042

Date	Visual Inspection
Drilling: 10/31/2011-11/8/2011	OK
Weekly Insp	
10/31-11/6	OK
11/7-11/14	OK
11/15-11/22	OK
11/23-11/30	OK
12/1-12-8	OK
12/9-12/16	OK
12/17-12/24	OK
12/25-12/31	OK
1/1-1/8/12	OK
1/9-1/16	OK
1/17-1/24	OK
1/25-2/1	OK
2/2-2/9	OK
2/10-2/17	OK
2/18-2/25	OK
2/26-3/4	OK
3/5-3/12	OK
3/13-3/19	OK
3/20-3/27	OK
3/28-3/3	OK
3/4-3/11	OK
3/13-3/20	OK
3/20-3/27	OK
3/28-4/3	OK
4/4-4/11	OK
4/12-4/19	OK
4/20-4/27	OK
4/28-5/4	OK
5/5-5/12	OK

Closed pit: 5/13/2012



David Morales, Huntington Energy

Cm 482

HUNTINGTON ENERGY L.L.C.

CANYON LARGO UNIT #505

LOT A 645' FNL 199' FEL

SEC. 23 T25N R07W

LEASE: NMSF-078879

API. #30-039-31097

LATITUDE: 36.39099° N

LONGITUDE: 107.53555° W (NAD 83)

RIO ARriba COUNTY, NEW MEXICO

HUNTINGTON ENERGY L.L.C.

CANYON LARGO UNIT #482

950' FSL 1140' FEL

SEC. 3 T25N R07W

LEASE: NMSF-078881

API. #30-039-31042

LATITUDE: 37.320280° N

LONGITUDE: 108.64028° W

RIO ARriba COUNTY, NEW MEXICO

HUNTINGTON ENERGY L.L.C.

CANYON LARGO UNIT #505

LOT A 645' FNL 199' FEL

SEC. 23 T25N R07W

LEASE: NMSF-078879

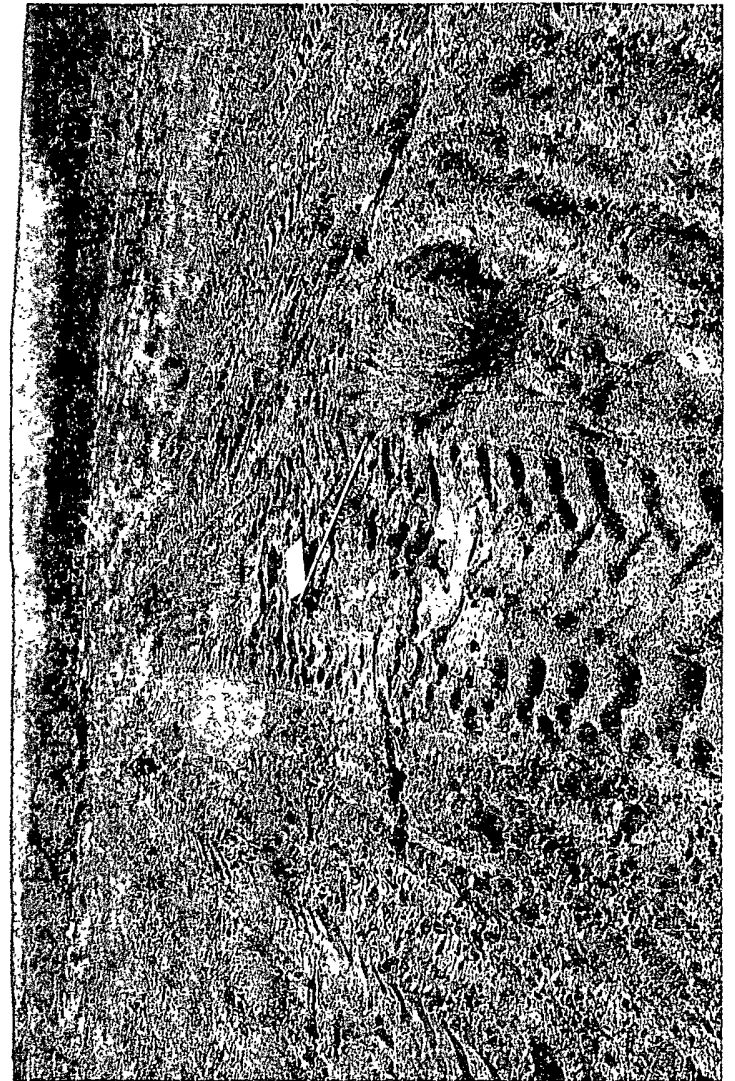
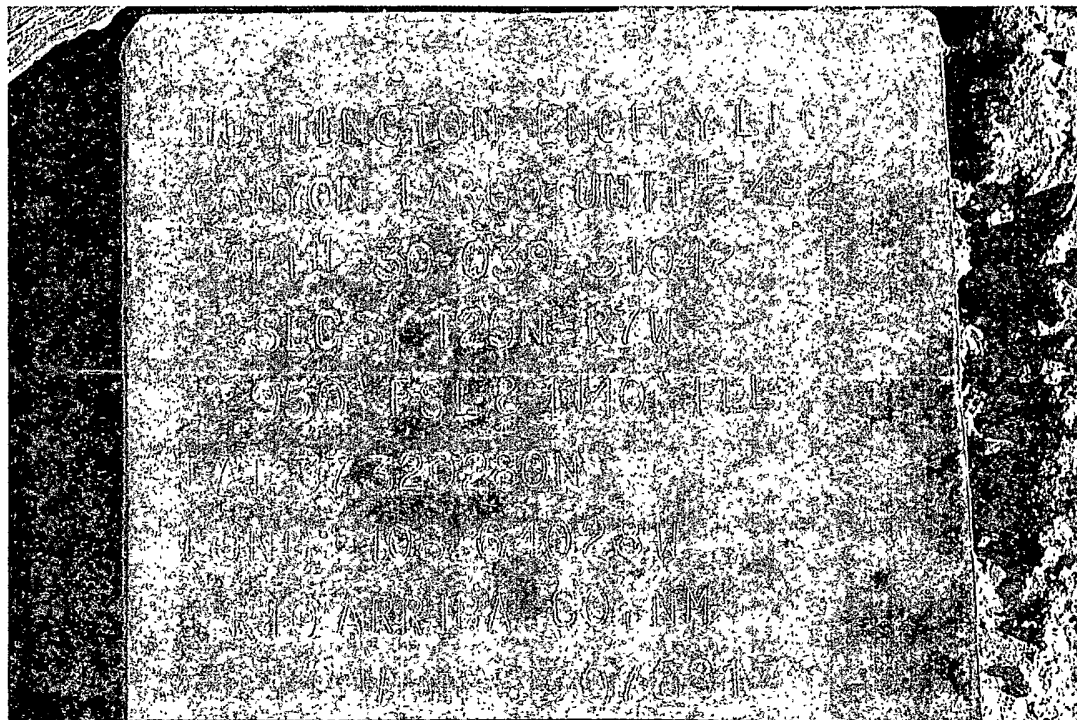
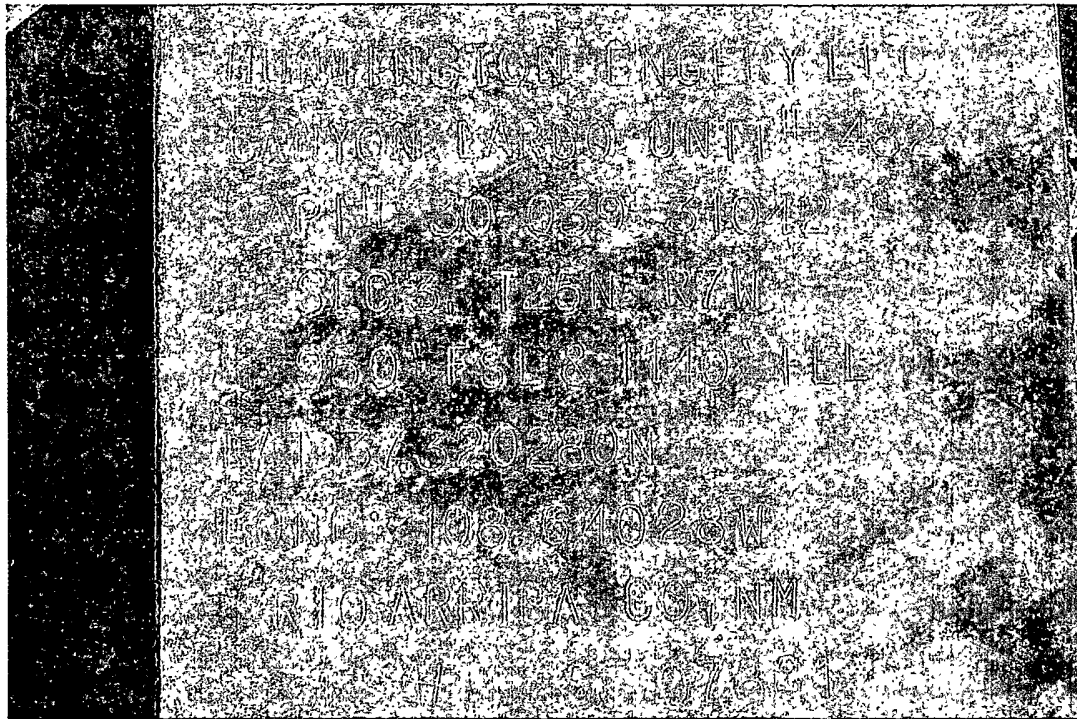
API. #30-039-31097

LATITUDE: 36.39099° N

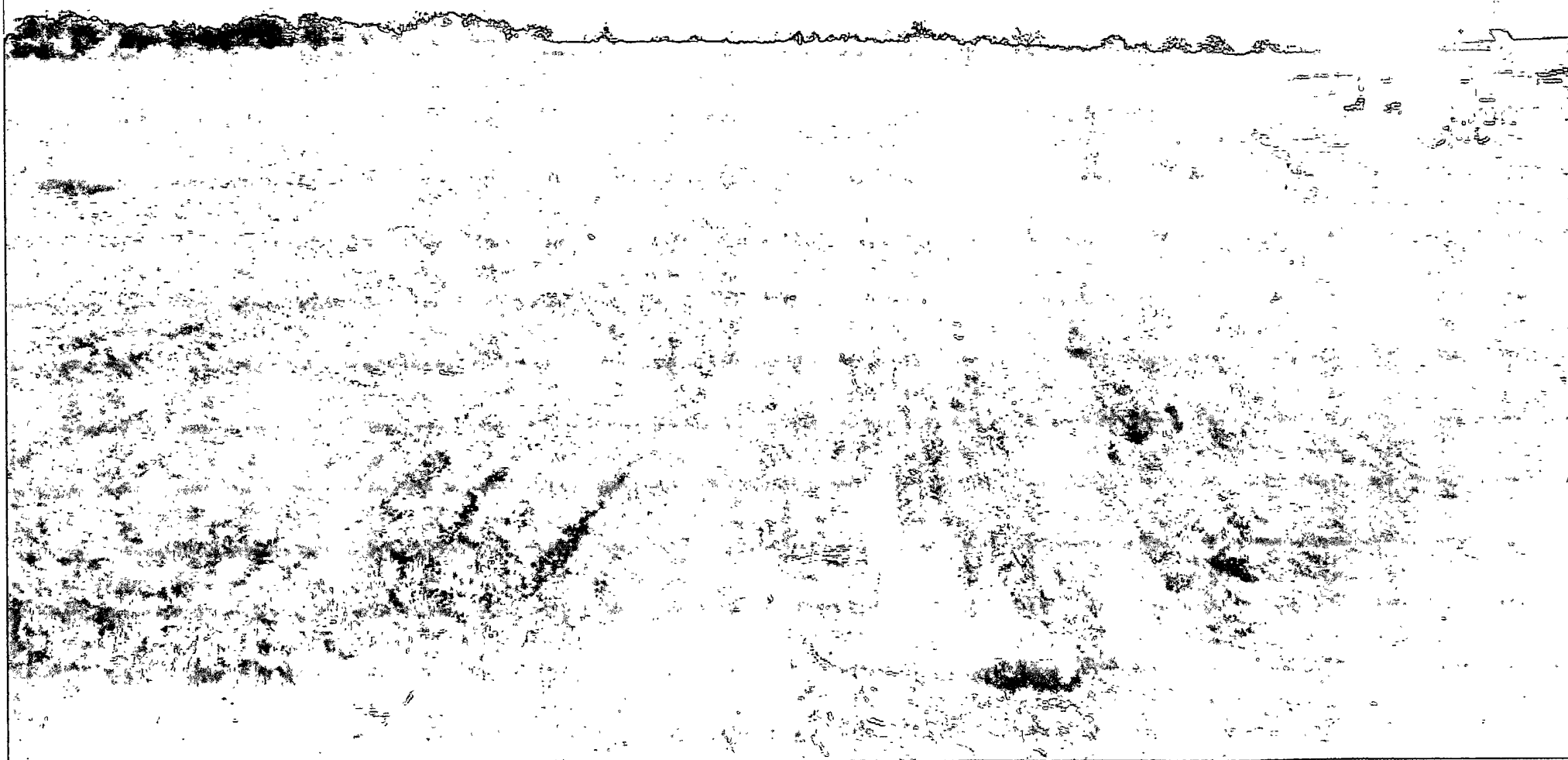
LONGITUDE: 107.53555° W (NAD 83)

RIO ARriba COUNTY, NEW MEXICO

Cull #482



CW #482



CU #182



CLN#482

