

District I  
1625 N. French Dr., Hobbs, NM 88240  
District II  
811 S. First St., Artesia, NM 88210  
District III  
1000 Rio Brazos Road, Aztec, NM 87410  
District IV  
1220 S. St. Francis Dr., Santa Fe, NM 87505

State of New Mexico  
Energy Minerals and Natural Resources  
Department  
Oil Conservation Division  
1220 South St. Francis Dr.  
Santa Fe, NM 87505

Form C-144  
Revised August 1, 2011

For temporary pits, closed-loop systems, and below-grade tanks, submit to the appropriate NMOCD District Office.  
For permanent pits and exceptions submit to the Santa Fe Environmental Bureau office and provide a copy to the appropriate NMOCD District Office.

**Pit, Closed-Loop System, Below-Grade Tank, or  
Proposed Alternative Method Permit or Closure Plan Application**

Type of action: ☐ Permit of a pit, closed-loop system, below-grade tank, or proposed alternative method  
☒ Closure of a pit, closed-loop system, below-grade tank, or proposed alternative method  
☐ Modification to an existing permit  
☐ Closure plan only submitted for an existing permitted or non-permitted pit, closed-loop system, below-grade tank, or proposed alternative method

**Instructions: Please submit one application (Form C-144) per individual pit, closed-loop system, below-grade tank or alternative request**

Please be advised that approval of this request does not relieve the operator of liability should operations result in pollution of surface water, ground water or the environment. Nor does approval relieve the operator of its responsibility to comply with any other applicable governmental authority's rules, regulations or ordinances.

1.  
Operator: Elm Ridge Exploration Company, LLC OGRID #: 149052  
Address: PO Box 156, Bloomfield, NM 87413  
Facility or well name: Jicarilla 40 GD #3  
API Number: 30-039-30248 OCD Permit Number: 8932  
U/L or Qtr/Qtr I Section 35 Township 24 N Range 5 W County: Rio Arriba  
Center of Proposed Design: Latitude 36.26466839 Longitude -107.3280886 NAD: ☐ 1927 ☒ 1983  
Surface Owner: ☐ Federal ☐ State ☐ Private ☒ Tribal Trust or Indian Allotment

2.  
☒ **Pit:** Subsection F or G of 19.15.17.11 NMAC

Temporary: ☒ Drilling ☐ Workover

☐ Permanent ☐ Emergency ☐ Cavitation ☐ P&A

☒ Lined ☐ Unlined Liner type: Thickness 20 mil ☒ LLDPE ☐ HDPE ☐ PVC ☐ Other \_\_\_\_\_

☒ String-Reinforced

Liner Seams: ☒ Welded ☒ Factory ☐ Other \_\_\_\_\_ Volume: 9,939 bbl Dimensions: L 160' x W 40' x D 10'

RCVD OCT 5 '12  
OIL CONS. DIV.  
DIST. 3

3.  
☐ **Closed-loop System:** Subsection H of 19.15.17.11 NMAC

Type of Operation: ☐ P&A ☐ Drilling a new well ☐ Workover or Drilling (Applies to activities which require prior approval of a permit or notice of intent)

☐ Drying Pad ☐ Above Ground Steel Tanks ☐ Haul-off Bins ☐ Other \_\_\_\_\_

☐ Lined ☐ Unlined Liner type: Thickness \_\_\_\_\_ mil ☐ LLDPE ☐ HDPE ☐ PVC ☐ Other \_\_\_\_\_

Liner Seams: ☐ Welded ☐ Factory ☐ Other \_\_\_\_\_

4.  
☐ **Below-grade tank:** Subsection I of 19.15.17.11 NMAC

Volume: \_\_\_\_\_ bbl Type of fluid: \_\_\_\_\_

Tank Construction material: \_\_\_\_\_

☐ Secondary containment with leak detection ☐ Visible sidewalls, liner, 6-inch lift and automatic overflow shut-off

☐ Visible sidewalls and liner ☐ Visible sidewalls only ☐ Other \_\_\_\_\_

Liner type: Thickness \_\_\_\_\_ mil ☐ HDPE ☐ PVC ☐ Other \_\_\_\_\_

5.  
☐ **Alternative Method:**

Submittal of an exception request is required. Exceptions must be submitted to the Santa Fe Environmental Bureau office for consideration of approval.

6.

**Fencing:** Subsection D of 19.15.17.11 NMAC (*Applies to permanent pits, temporary pits, and below-grade tanks*)

- ☐ Chain link, six feet in height, two strands of barbed wire at top (*Required if located within 1000 feet of a permanent residence, school, hospital, institution or church*)
- ☐ Four foot height, four strands of barbed wire evenly spaced between one and four feet
- ☐ Alternate. Please specify \_\_\_\_\_

7.

**Netting:** Subsection E of 19.15.17.11 NMAC (*Applies to permanent pits and permanent open top tanks*)

- ☐ Screen ☐ Netting ☐ Other \_\_\_\_\_
- ☐ Monthly inspections (If netting or screening is not physically feasible)

8.

**Signs:** Subsection C of 19.15.17.11 NMAC

- ☐ 12"x 24", 2" lettering, providing Operator's name, site location, and emergency telephone numbers
- ☐ Signed in compliance with 19.15.16.8 NMAC

9.

**Administrative Approvals and Exceptions:**

Justifications and/or demonstrations of equivalency are required. Please refer to 19.15.17 NMAC for guidance.

**Please check a box if one or more of the following is requested, if not leave blank:**

- ☐ Administrative approval(s): Requests must be submitted to the appropriate division district or the Santa Fe Environmental Bureau office for consideration of approval.
- ☐ Exception(s): Requests must be submitted to the Santa Fe Environmental Bureau office for consideration of approval.

10.

**Siting Criteria (regarding permitting):** 19.15.17.10 NMAC

**Instructions:** The applicant must demonstrate compliance for each siting criteria below in the application. Recommendations of acceptable source material are provided below. Requests regarding changes to certain siting criteria may require administrative approval from the appropriate district office or may be considered an exception which must be submitted to the Santa Fe Environmental Bureau office for consideration of approval. Applicant must attach justification for request. Please refer to 19.15.17.10 NMAC for guidance. Siting criteria does not apply to drying pads or above-grade tanks associated with a closed-loop system.

Ground water is less than 50 feet below the bottom of the temporary pit, permanent pit, or below-grade tank. - NM Office of the State Engineer - iWATERS database search; USGS; Data obtained from nearby wells	<input type="checkbox"/> Yes <input type="checkbox"/> No
Within 300 feet of a continuously flowing watercourse, or 200 feet of any other significant watercourse or lakebed, sinkhole, or playa lake (measured from the ordinary high-water mark). - Topographic map; Visual inspection (certification) of the proposed site	<input type="checkbox"/> Yes <input type="checkbox"/> No
Within 300 feet from a permanent residence, school, hospital, institution, or church in existence at the time of initial application. (Applies to temporary, emergency, or cavitation pits and below-grade tanks) - Visual inspection (certification) of the proposed site; Aerial photo; Satellite image	<input type="checkbox"/> Yes <input type="checkbox"/> No <input type="checkbox"/> NA
Within 1000 feet from a permanent residence, school, hospital, institution, or church in existence at the time of initial application. (Applies to permanent pits) - Visual inspection (certification) of the proposed site; Aerial photo; Satellite image	<input type="checkbox"/> Yes <input type="checkbox"/> No <input type="checkbox"/> NA
Within 500 horizontal feet of a private, domestic fresh water well or spring that less than five households use for domestic or stock watering purposes, or within 1000 horizontal feet of any other fresh water well or spring, in existence at the time of initial application. - NM Office of the State Engineer - iWATERS database search; Visual inspection (certification) of the proposed site	<input type="checkbox"/> Yes <input type="checkbox"/> No
Within incorporated municipal boundaries or within a defined municipal fresh water well field covered under a municipal ordinance adopted pursuant to NMSA 1978, Section 3-27-3, as amended. - Written confirmation or verification from the municipality; Written approval obtained from the municipality	<input type="checkbox"/> Yes <input type="checkbox"/> No
Within 500 feet of a wetland. - US Fish and Wildlife Wetland Identification map; Topographic map; Visual inspection (certification) of the proposed site	<input type="checkbox"/> Yes <input type="checkbox"/> No
Within the area overlying a subsurface mine. - Written confirmation or verification or map from the NM EMNRD-Mining and Mineral Division	<input type="checkbox"/> Yes <input type="checkbox"/> No
Within an unstable area. - Engineering measures incorporated into the design; NM Bureau of Geology & Mineral Resources; USGS; NM Geological Society; Topographic map	<input type="checkbox"/> Yes <input type="checkbox"/> No
Within a 100-year floodplain. - FEMA map	<input type="checkbox"/> Yes <input type="checkbox"/> No

11.

**Temporary Pits, Emergency Pits, and Below-grade Tanks Permit Application Attachment Checklist:** Subsection B of 19.15.17.9 NMAC**Instructions:** Each of the following items must be attached to the application. Please indicate, by a check mark in the box, that the documents are attached.

- ☐ Hydrogeologic Report (Below-grade Tanks) - based upon the requirements of Paragraph (4) of Subsection B of 19.15.17.9 NMAC  
☐ Hydrogeologic Data (Temporary and Emergency Pits) - based upon the requirements of Paragraph (2) of Subsection B of 19.15.17.9 NMAC  
☐ Siting Criteria Compliance Demonstrations - based upon the appropriate requirements of 19.15.17.10 NMAC  
☐ Design Plan - based upon the appropriate requirements of 19.15.17.11 NMAC  
☐ Operating and Maintenance Plan - based upon the appropriate requirements of 19.15.17.12 NMAC  
☐ Closure Plan (Please complete Boxes 14 through 18, if applicable) - based upon the appropriate requirements of Subsection C of 19.15.17.9 NMAC and 19.15.17.13 NMAC  
☐ Previously Approved Design (attach copy of design) API Number: \_\_\_\_\_ or Permit Number: \_\_\_\_\_

12.

**Closed-loop Systems Permit Application Attachment Checklist:** Subsection B of 19.15.17.9 NMAC**Instructions:** Each of the following items must be attached to the application. Please indicate, by a check mark in the box, that the documents are attached.

- ☐ Geologic and Hydrogeologic Data (only for on-site closure) - based upon the requirements of Paragraph (3) of Subsection B of 19.15.17.9  
☐ Siting Criteria Compliance Demonstrations (only for on-site closure) - based upon the appropriate requirements of 19.15.17.10 NMAC  
☐ Design Plan - based upon the appropriate requirements of 19.15.17.11 NMAC  
☐ Operating and Maintenance Plan - based upon the appropriate requirements of 19.15.17.12 NMAC  
☐ Closure Plan (Please complete Boxes 14 through 18, if applicable) - based upon the appropriate requirements of Subsection C of 19.15.17.9 NMAC and 19.15.17.13 NMAC  
☐ Previously Approved Design (attach copy of design) API Number: \_\_\_\_\_  
☐ Previously Approved Operating and Maintenance Plan API Number: \_\_\_\_\_ (Applies only to closed-loop system that use above ground steel tanks or haul-off bins and propose to implement waste removal for closure)

13.

**Permanent Pits Permit Application Checklist:** Subsection B of 19.15.17.9 NMAC**Instructions:** Each of the following items must be attached to the application. Please indicate, by a check mark in the box, that the documents are attached.

- ☐ Hydrogeologic Report - based upon the requirements of Paragraph (1) of Subsection B of 19.15.17.9 NMAC  
☐ Siting Criteria Compliance Demonstrations - based upon the appropriate requirements of 19.15.17.10 NMAC  
☐ Climatological Factors Assessment  
☐ Certified Engineering Design Plans - based upon the appropriate requirements of 19.15.17.11 NMAC  
☐ Dike Protection and Structural Integrity Design - based upon the appropriate requirements of 19.15.17.11 NMAC  
☐ Leak Detection Design - based upon the appropriate requirements of 19.15.17.11 NMAC  
☐ Liner Specifications and Compatibility Assessment - based upon the appropriate requirements of 19.15.17.11 NMAC  
☐ Quality Control/Quality Assurance Construction and Installation Plan  
☐ Operating and Maintenance Plan - based upon the appropriate requirements of 19.15.17.12 NMAC  
☐ Freeboard and Overtopping Prevention Plan - based upon the appropriate requirements of 19.15.17.11 NMAC  
☐ Nuisance or Hazardous Odors, including H<sub>2</sub>S, Prevention Plan  
☐ Emergency Response Plan  
☐ Oil Field Waste Stream Characterization  
☐ Monitoring and Inspection Plan  
☐ Erosion Control Plan  
☐ Closure Plan - based upon the appropriate requirements of Subsection C of 19.15.17.9 NMAC and 19.15.17.13 NMAC

14.

**Proposed Closure:** 19.15.17.13 NMAC**Instructions:** Please complete the applicable boxes, Boxes 14 through 18, in regards to the proposed closure plan.

- Type: ☐ Drilling ☐ Workover ☐ Emergency ☐ Cavitation ☐ P&A ☐ Permanent Pit ☐ Below-grade Tank ☐ Closed-loop System  
☐ Alternative  
 Proposed Closure Method: ☐ Waste Excavation and Removal  
☐ Waste Removal (Closed-loop systems only)  
☐ On-site Closure Method (Only for temporary pits and closed-loop systems)  
☐ In-place Burial ☐ On-site Trench Burial  
☐ Alternative Closure Method (Exceptions must be submitted to the Santa Fe Environmental Bureau for consideration)

15.

**Waste Excavation and Removal Closure Plan Checklist:** (19.15.17.13 NMAC) **Instructions:** Each of the following items must be attached to the closure plan. Please indicate, by a check mark in the box, that the documents are attached.

- ☐ Protocols and Procedures - based upon the appropriate requirements of 19.15.17.13 NMAC  
☐ Confirmation Sampling Plan (if applicable) - based upon the appropriate requirements of Subsection F of 19.15.17.13 NMAC  
☐ Disposal Facility Name and Permit Number (for liquids, drilling fluids and drill cuttings)  
☐ Soil Backfill and Cover Design Specifications - based upon the appropriate requirements of Subsection H of 19.15.17.13 NMAC  
☐ Re-vegetation Plan - based upon the appropriate requirements of Subsection I of 19.15.17.13 NMAC  
☐ Site Reclamation Plan - based upon the appropriate requirements of Subsection G of 19.15.17.13 NMAC

16.

**Waste Removal Closure For Closed-loop Systems That Utilize Above Ground Steel Tanks or Haul-off Bins Only:** (19.15.17.13.D NMAC)

**Instructions:** Please identify the facility or facilities for the disposal of liquids, drilling fluids and drill cuttings. Use attachment if more than two facilities are required.

Disposal Facility Name: \_\_\_\_\_ Disposal Facility Permit Number: \_\_\_\_\_  
 Disposal Facility Name: \_\_\_\_\_ Disposal Facility Permit Number: \_\_\_\_\_

Will any of the proposed closed-loop system operations and associated activities occur on or in areas that *will not* be used for future service and operations?

☐ Yes (If yes, please provide the information below) ☐ No

Required for impacted areas which will not be used for future service and operations:

- ☐ Soil Backfill and Cover Design Specifications - based upon the appropriate requirements of Subsection H of 19.15.17.13 NMAC  
☐ Re-vegetation Plan - based upon the appropriate requirements of Subsection I of 19.15.17.13 NMAC  
☐ Site Reclamation Plan - based upon the appropriate requirements of Subsection G of 19.15.17.13 NMAC

17.

**Siting Criteria (regarding on-site closure methods only):** 19.15.17.10 NMAC

**Instructions:** Each siting criteria requires a demonstration of compliance in the closure plan. Recommendations of acceptable source material are provided below. Requests regarding changes to certain siting criteria may require administrative approval from the appropriate district office or may be considered an exception which must be submitted to the Santa Fe Environmental Bureau office for consideration of approval. Justifications and/or demonstrations of equivalency are required. Please refer to 19.15.17.10 NMAC for guidance.

Ground water is less than 50 feet below the bottom of the buried waste. - NM Office of the State Engineer - iWATERS database search; USGS; Data obtained from nearby wells	<input type="checkbox"/> Yes <input type="checkbox"/> No <input type="checkbox"/> NA
Ground water is between 50 and 100 feet below the bottom of the buried waste - NM Office of the State Engineer - iWATERS database search; USGS; Data obtained from nearby wells	<input type="checkbox"/> Yes <input type="checkbox"/> No <input type="checkbox"/> NA
Ground water is more than 100 feet below the bottom of the buried waste. - NM Office of the State Engineer - iWATERS database search; USGS; Data obtained from nearby wells	<input type="checkbox"/> Yes <input type="checkbox"/> No <input type="checkbox"/> NA
Within 300 feet of a continuously flowing watercourse, or 200 feet of any other significant watercourse or lakebed, sinkhole, or playa lake (measured from the ordinary high-water mark). - Topographic map; Visual inspection (certification) of the proposed site	<input type="checkbox"/> Yes <input type="checkbox"/> No
Within 300 feet from a permanent residence, school, hospital, institution, or church in existence at the time of initial application. - Visual inspection (certification) of the proposed site; Aerial photo; Satellite image	<input type="checkbox"/> Yes <input type="checkbox"/> No
Within 500 horizontal feet of a private, domestic fresh water well or spring that less than five households use for domestic or stock watering purposes, or within 1000 horizontal feet of any other fresh water well or spring, in existence at the time of initial application. - NM Office of the State Engineer - iWATERS database; Visual inspection (certification) of the proposed site	<input type="checkbox"/> Yes <input type="checkbox"/> No
Within incorporated municipal boundaries or within a defined municipal fresh water well field covered under a municipal ordinance adopted pursuant to NMSA 1978, Section 3-27-3, as amended. - Written confirmation or verification from the municipality; Written approval obtained from the municipality	<input type="checkbox"/> Yes <input type="checkbox"/> No
Within 500 feet of a wetland. - US Fish and Wildlife Wetland Identification map; Topographic map; Visual inspection (certification) of the proposed site	<input type="checkbox"/> Yes <input type="checkbox"/> No
Within the area overlying a subsurface mine. - Written confirmation or verification or map from the NM EMNRD-Mining and Mineral Division	<input type="checkbox"/> Yes <input type="checkbox"/> No
Within an unstable area. - Engineering measures incorporated into the design; NM Bureau of Geology & Mineral Resources; USGS; NM Geological Society; Topographic map	<input type="checkbox"/> Yes <input type="checkbox"/> No
Within a 100-year floodplain. - FEMA map	<input type="checkbox"/> Yes <input type="checkbox"/> No

18.

**On-Site Closure Plan Checklist:** (19.15.17.13 NMAC) **Instructions:** Each of the following items must be attached to the closure plan. Please indicate, by a check mark in the box, that the documents are attached.

- ☐ Siting Criteria Compliance Demonstrations - based upon the appropriate requirements of 19.15.17.10 NMAC  
☐ Proof of Surface Owner Notice - based upon the appropriate requirements of Subsection F of 19.15.17.13 NMAC  
☐ Construction/Design Plan of Burial Trench (if applicable) based upon the appropriate requirements of 19.15.17.11 NMAC  
☐ Construction/Design Plan of Temporary Pit (for in-place burial of a drying pad) - based upon the appropriate requirements of 19.15.17.11 NMAC  
☐ Protocols and Procedures - based upon the appropriate requirements of 19.15.17.13 NMAC  
☐ Confirmation Sampling Plan (if applicable) - based upon the appropriate requirements of Subsection F of 19.15.17.13 NMAC  
☐ Waste Material Sampling Plan - based upon the appropriate requirements of Subsection F of 19.15.17.13 NMAC  
☐ Disposal Facility Name and Permit Number (for liquids, drilling fluids and drill cuttings or in case on-site closure standards cannot be achieved)  
☐ Soil Cover Design - based upon the appropriate requirements of Subsection H of 19.15.17.13 NMAC  
☐ Re-vegetation Plan - based upon the appropriate requirements of Subsection I of 19.15.17.13 NMAC  
☐ Site Reclamation Plan - based upon the appropriate requirements of Subsection G of 19.15.17.13 NMAC

19.

**Operator Application Certification:**

I hereby certify that the information submitted with this application is true, accurate and complete to the best of my knowledge and belief.

Name (Print): Title:

Signature: \_\_\_\_\_ Date: \_\_\_\_\_

e-mail address: Telephone:

20.

**OCD Approval:** ☐ Permit Application (including closure plan) ☒ Closure Plan (only) ☐ OCD Conditions (see attachment)

OCD Representative Signature: Jonathan D. Kelly Approval Date: 10/10/2012

Title: Compliance Officer OCD Permit Number: \_\_\_\_\_

21.

**Closure Report (required within 60 days of closure completion):** Subsection K of 19.15.17.13 NMAC

*Instructions: Operators are required to obtain an approved closure plan prior to implementing any closure activities and submitting the closure report. The closure report is required to be submitted to the division within 60 days of the completion of the closure activities. Please do not complete this section of the form until an approved closure plan has been obtained and the closure activities have been completed.*

☒ Closure Completion Date: September 12, 2012

22.

**Closure Method:**

☐ Waste Excavation and Removal ☒ On-Site Closure Method ☐ Alternative Closure Method ☐ Waste Removal (Closed-loop systems only)  
☐ If different from approved plan, please explain.

23.

**Closure Report Regarding Waste Removal Closure For Closed-loop Systems That Utilize Above Ground Steel Tanks or Haul-off Bins Only:**

*Instructions: Please identify the facility or facilities for where the liquids, drilling fluids and drill cuttings were disposed. Use attachment if more than two facilities were utilized.*

Disposal Facility Name: \_\_\_\_\_ Disposal Facility Permit Number: \_\_\_\_\_

Disposal Facility Name: \_\_\_\_\_ Disposal Facility Permit Number: \_\_\_\_\_

Were the closed-loop system operations and associated activities performed on or in areas that will not be used for future service and operations?

☐ Yes (If yes, please demonstrate compliance to the items below) ☐ No

Required for impacted areas which will not be used for future service and operations:

- ☐ Site Reclamation (Photo Documentation)  
☐ Soil Backfilling and Cover Installation  
☐ Re-vegetation Application Rates and Seeding Technique

24.

**Closure Report Attachment Checklist:** *Instructions: Each of the following items must be attached to the closure report. Please indicate, by a check mark in the box, that the documents are attached.*

- ☒ Proof of Closure Notice (surface owner and division) – See attached: Closure Notices  
☒ Proof of Deed Notice (required for on-site closure) – Not required on Native Lands  
☒ Plot Plan (for on-site closures and temporary pits) – See attached: Plot Plan  
☒ Confirmation Sampling Analytical Results (if applicable) – See attached: Analytical Results  
☒ Waste Material Sampling Analytical Results (required for on-site closure) – See attached: Envirotech Analytical Results  
☒ Disposal Facility Name and Permit Number  
☒ Soil Backfilling and Cover Installation – See attached: Site Photography  
☒ Re-vegetation Application Rates and Seeding Technique - Pursuant to the BLM MOU and Approved Closure Plan  
☒ Site Reclamation (Photo Documentation) – See attached: Site Photography

On-site Closure Location: Latitude 36.26466839 Longitude -107.3280886 NAD: ☐ 1927 ☒ 1983

25.

**Operator Closure Certification:**

I hereby certify that the information and attachments submitted with this closure report is true, accurate and complete to the best of my knowledge and belief. I also certify that the closure complies with all applicable closure requirements and conditions specified in the approved closure plan.

Name (Print): Ms. Amy Mackey Title: Administrative Manager

Signature: \_\_\_\_\_ Date: 10/3/12

e-mail address: amackey1@elmr ridge.net Telephone: (505) 632-3476 Ext. 201

Submit To Appropriate District Office Two Copies <b>District I</b> 1625 N French Dr. Hobbs, NM 88240 <b>District II</b> 811 S First St. Artesia, NM 88210 <b>District III</b> 1000 Rio Brazos Rd. Aztec, NM 87410 <b>District IV</b> 1220 S St Francis Dr. Santa Fe, NM 87505	<b>State of New Mexico</b> <b>Energy, Minerals and Natural Resources</b>  <b>Oil Conservation Division</b> <b>1220 South St. Francis Dr.</b> <b>Santa Fe, NM 87505</b>	<b>Form C-105</b> Revised August 1, 2011								
		1. WELL API NO. 30-03930248								
		2 Type of Lease <input type="checkbox"/> STATE <input type="checkbox"/> FEE <input checked="" type="checkbox"/> FED/INDIAN								
		3. State Oil & Gas Lease No. BIA CONTRACT 40								
<b>WELL COMPLETION OR RECOMPLETION REPORT AND LOG</b>										
4. Reason for filing  <input type="checkbox"/> <b>COMPLETION REPORT</b> (Fill in boxes #1 through #31 for State and Fee wells only)  <input checked="" type="checkbox"/> <b>C-144 CLOSURE ATTACHMENT</b> (Fill in boxes #1 through #9, #15 Date Rig Released and #32 and/or #33, attach this and the plat to the C-144 closure report in accordance with 19 15 17 13.K NMAC)		5. Lease Name or Unit Agreement Name Jicarilla 40 GD								
		6. Well Number 3								
7. Type of Completion: <input checked="" type="checkbox"/> NEW WELL <input type="checkbox"/> WORKOVER <input type="checkbox"/> DEEPENING <input type="checkbox"/> PLUGBACK <input type="checkbox"/> DIFFERENT RESERVOIR <input type="checkbox"/> OTHER										
8. Name of Operator Elm Ridge Exploration		9 OGRID 149052								
10 Address of Operator Post Office Box 156, Bloomfield, New Mexico, 87413		11. Pool name or Wildcat								
12. Location	Unit Ltr	Section	Township	Range	Lot	Feet from the	N/S Line	Feet from the	E/W Line	County
Surface:	J	35	24N	5W		1750	S	1730	E	Rio Arriba
BH:										
13 Date Spudded 11/22/11	14. Date T.D. Reached 12/8/11	15. Date Rig Released 12/10/2011		16 Date Completed (Ready to Produce) 3/5/12			17. Elevations (DF and RKB, RT, GR, etc.) 6787'			
18. Total Measured Depth of Well 7171'		19. Plug Back Measured Depth 7109'		20. Was Directional Survey Made?			21 Type Electric and Other Logs Run			
22 Producing Interval(s), of this completion - Top, Bottom, Name 6272'-6398' Basin Mancos (squeezed off); 5644'-5840' Basin Mancos (Producing)										
<b>23 CASING RECORD (Report all strings set in well)</b>										
CASING SIZE		WEIGHT LB /FT.		DEPTH SET		HOLE SIZE		CEMENTING RECORD		AMOUNT PULLED
8 5/8"		24#		381'		12 1/4"		260 sks to surface		
5 1/2"		15.5#		7154'		7 7/8"		1100 sks to surface		
24. LINER RECORD						25. TUBING RECORD				
SIZE	TOP	BOTTOM	SACKS CEMENT	SCREEN		SIZE	DEPTH SET	PACKER SET		
						2 3/8"	5644'			
26. Perforation record (interval, size, and number) 6272'-6398' Size .46 Number 228 5644'-5840' Size .46 Number: 262						27 ACID, SHOT, FRACTURE, CEMENT, SQUEEZE, ETC.				
						DEPTH INTERVAL		AMOUNT AND KIND MATERIAL USED		
						6272'-6398'		See form 3160-4 accepted on 3/21/12		
						5644'-5840"				
<b>28. PRODUCTION</b>										
Date First Production 2/28/12		Production Method ( <i>Flowing, gas lift, pumping - Size and type pump</i> ) Flowing					Well Status ( <i>Prod. or Shut-in</i> ) Producing			
Date of Test 3/1/12	Hours Tested 24	Choke Size 1/2"	Prod'n For Test Period	Oil - Bbl 14	Gas - MCF 0	Water - Bbl. 0	Gas - Oil Ratio			
Flow Tubing Press 50	Casing Pressure 280	Calculated 24- Hour Rate	Oil - Bbl	Gas - MCF	Water - Bbl.	Oil Gravity - API - ( <i>Corr.</i> )				
29. Disposition of Gas ( <i>Sold, used for fuel, vented, etc</i> )							30. Test Witnessed By			
31. List Attachments										
32. If a temporary pit was used at the well, attach a plat with the location of the temporary pit										
33. If an on-site burial was used at the well, report the exact location of the on-site burial:										
Latitude 36 26466839 Deg N      Longitude 107 3280886 Deg W      NAD 1927 1983										
I hereby certify that the information shown on both sides of this form is true and complete to the best of my knowledge and belief Printed Signature _____ Name Ms. Amy Mackey      Title Administrative Manager      Date _____										
E-mail Address amackey1@elmridge.net										

## INSTRUCTIONS

This form is to be filed with the appropriate District Office of the Division not later than 20 days after the completion of any newly-drilled or deepened well and not later than 60 days after completion of closure. When submitted as a completion report, this shall be accompanied by one copy of all electrical and radio-activity logs run on the well and a summary of all special tests conducted, including drill stem tests. All depths reported shall be measured depths. In the case of directionally drilled wells, true vertical depths shall also be reported. For multiple completions, items 11, 12 and 26-31 shall be reported for each zone.

INDICATE FORMATION TOPS IN CONFORMANCE WITH GEOGRAPHICAL SECTION OF STATE

Southeastern New Mexico		Northwestern New Mexico	
T. Anhy	T. Canyon	T. Ojo Alamo	T. Penn A"
T. Salt	T. Strawn	T. Kirtland	T. Penn. "B"
B. Salt	T. Atoka	T. Fruitland	T. Penn. "C"
T. Yates	T. Miss	T. Pictured Cliffs	T. Penn. "D"
T. 7 Rivers	T. Devonian	T. Cliff House	T. Leadville
T. Queen	T. Silurian	T. Menefee	T. Madison
T. Grayburg	T. Montoya	T. Point Lookout	T. Elbert
T. San Andres	T. Simpson	T. Mancos	T. McCracken
T. Glorieta	T. McKee	T. Gallup	T. Ignacio Otzie
T. Paddock	T. Ellenburger	Base Greenhorn	T. Granite
T. Blinebry	T. Gr. Wash	T. Dakota	
T. Tubb	T. Delaware Sand	T. Morrison	
T. Drinkard	T. Bone Springs	T. Todilto	
T. Abo	T.	T. Entrada	
T. Wolfcamp	T.	T. Wingate	
T. Penn	T.	T. Chinle	
T. Cisco (Bough C)	T.	T. Permian	

## OIL OR GAS SANDS OR ZONES

No. 1, from.....to.....

No. 2, from.....to.....

No. 3, from.....to.....

No. 4, from.....to.....

## IMPORTANT WATER SANDS

Include data on rate of water inflow and elevation to which water rose in hole.

No. 1, from.....to.....feet.....  
 No. 2, from.....to.....feet.....  
 No. 3, from.....to.....feet.....

## LITHOLOGY RECORD (Attach additional sheet if necessary)

From	To	Thickness In Feet	Lithology

From	To	Thickness In Feet	Lithology

### Detailed Closure Report

In accordance with Rule 19.15.17.13 NMAC, the following information describes the closure of the temporary pit referenced above. All proper documentation regarding closure activities is being included with the C-144.

Documentation includes:

- Details on capping and covering, where applicable (see report)
- Plot Plan (Pit Diagram) (Included as an attachment)
- Inspection Reports (Included as an attachment)
- Sampling Results (Included as an attachment)
- C-105 (Included as an attachment)
- Copy of Deed Notice will be filed with County Clerk (Not required on Federal, State, or Tribal land)

### Drill Pit Closure Plan Checklist

- 1) An operator shall close a pit within the time periods provided in 19.15.17.13 NMAC, or by an earlier date that the division requires because of imminent danger to fresh water, public health or the environment. An operator shall close any other permitted temporary pit within six months from the date that the operator releases the drilling or work over rig. The appropriate division district office may grant an extension not to exceed three months.

**The rig release date was December 10, 2012. Closure activities were completed on September 12, 2012.**

- 2) The operator of a temporary pit shall remove all liquids from the temporary pit prior to closure and dispose of the liquids in a division approved facility or recycle, reuse or reclaim the liquids in a manner that the appropriate division office approves. All free standing liquids will be removed before backfilling the pit and disposed of at an Elm Ridge Disposal Well or at Basin Disposal's evaporation pond.

**All recovered liquids were removed and disposed of at Carson WDW 242 prior to initial closure sampling on April 17, 2012.**

- 3) On-Site Burial. The operator shall demonstrate and comply with the siting requirements in Subsection C of 19.15.17.10 NMAC and the closure requirements and standards of Subsection F of 19.15.17.13 NMAC if the proposed closure method of a temporary pit involves on-site burial. The preferred method of closure will be on-site, in place burial, assuming all criteria outlined in 19.15.17.13 (B) are met.

**The pit was closed using on-site burial. The permit of the pit was approved by the OCD on September 12, 2011.**

- 4) An alternative interim marking system will be used to allow for safer and more efficient operations. A minimum 4" O.D. steel pipe will be set at least 36" deep at the center of the pit. A threaded collar will be on the top of the pipe. A minimum 12" x 12" steel plate will be welded atop the threaded collar. The top of the plate will be flush with ground level. The



standard location information listed will be welded onto the plate, plus a notation that it marks an on-site buried, temporary pit. Upon plugging the well, the plate will be removed, and the pit will be marked as described in 19.15.17.13.F(1)(d).

**A division approved in-ground marker will be placed with a four (4) foot riser upon P&A of this well location. Information welded onto the marker will include: Elm Ridge Exploration, Lease # BIA Contract 40, Jicarilla 40 GD #3, UL J, Sec. 35, Twn. 24N, Rng 5W, on-site burial and the date.**

- 5) The operator shall report the exact location of the on-site burial on form C-105 filed with the division.

**Please find attached the C-105 form that is filed with the division.**

- 6) The operator shall file a deed notice identifying the exact location of the on-site burial with the county clerk in the county where the on-site burial occurs.

**Due to the land being located on Jicarilla Apache Tribal Land a deed notice was not applicable.**

- 7) Elm Ridge Exploration will stabilize or solidify the contents to a bearing capacity sufficient to support the temporary pit's final cover. Elm Ridge Exploration will mix the contents with soil or other material at a mixing ratio of no greater than 3-1, soil or other material: to drill pit contents.

**Contents of drill pit were removed prior to backfill.**

- 8) A five (5)-point composite sample will be taken of the pit, and all samples will be tested per Subsection B of 19.15.17.13(B)(1)(b). If the criteria are not met, then all contents will be handled per subparagraph (a) of Paragraph (1) of Subsection B of 19.15.17.13. (i.e. dig and haul). If a dig and haul is required, then the disposal facility will be Envirotech's Landfarm (NM01-0011).

**Initial sampling on 4/17/12 returned results that were below the NMOCD regulatory standards for benzene, BTEX, and TPH, but above for chlorides; see attached laboratory results. The contents of the drill pit were removed and the soil beneath the pit was re-sampled for chlorides on 9/12/12. The results were below the NMOCD regulatory standard for chlorides at 68.2 ppm.**

Sample	Chloride	Benzene (8021)	BTEX (8021)	TPH (418.1)	DRO/GRO (8015)
NMOCD Regulatory Standards	1,000 mg/kg	0.2 mg/kg	50.0 mg/kg	2,500 mg/kg	500 mg/kg
Contents (4/17/12)	1360 mg/kg	0.0208 mg/kg	0.883 mg/kg	517.0 mg/kg	5 mg/kg
Contents (9/12/12)	68.2 mg/kg	Not Sampled	Not Sampled	Not Sampled	Not Sampled

- 9) After completing solidification and testing, the pit area will be backfilled with compacted, waste free, earthen material. At least four (4) feet of cover will be achieved. The cover will include one (1) foot of suitable material to establish vegetation at the site, or the background

thickness of topsoil, whichever is greater.

**Site was backfilled using one (1) foot of topsoil and approximately four (4) feet of non-waste containing earthen material used for cover.**

- 10) Re-contouring of the location will match the fit, shape, line, form, and texture of the surrounding area. Re-shaping will control drainage and prevent ponds and erosion. Natural drainages will be unimpeded. Water bars and/or silt traps will be placed where needed to prevent erosion on a large scale. Final re-contour will have a uniform appearance with smooth surface, fitting the natural landscape.

**The site was re-contoured to match the fit, shape, line and form of the surrounding area. It was re-shaped to prevent ponding and erosion, and in such a way that natural drainage was unimpeded. Water bars or silt traps were not needed to prevent erosion. The final re-contour has a uniform appearance and a smooth surface, and fits the natural landscape. See attached photos of site re-contouring.**

- 11) Notice will be sent to the OCD when the reclaimed area is seeded.

**Elm Ridge Exploration will comply with the BLM's re-seeding requirements in this area in accordance with the federal rules and regulations as allowed by the BLM/OCD Memorandum of Understanding.**

- 12) The operator shall notify the surface owner by certified mail, return receipt requested, that the operator plans to close a temporary pit, a permanent pit, a below grade tank or where the operator has approval for on-site closure. Evidence of mailing of the notice to the address of the surface owner shown in the county tax records is sufficient to demonstrate compliance with this requirement.

**Due to a misunderstanding and miscommunication of the notification of closure to surface owner, Elm Ridge Exploration will send notification that on-site closure activities have occurred. Elm Ridge Exploration will be sure to send notification prior to closure activities in the future. See attached Land Owner Notification.**

- 13) After approval of this application, Elm Ridge Exploration will notify the OCD verbally, or by other means, at least 72 hours, but not more than one week, prior to any closure operations. The notice shall include the operator's name and the location to be closed by unit letter, section, township and range, well name and number and API number.

**Due to a misunderstanding and miscommunication of the notification of closure to the OCD, Elm Ridge Exploration will send notification that on-site closure activities have occurred. Elm Ridge Exploration will be sure to send notification prior to closure activities in the future. See attached OCD notification.**

- 14) Elm Ridge Exploration will close the pit in accordance with OCD rules 19.15.17.12 &13. Post closure documents will be submitted within 60 days of pit closure and will include forms C-105 and C-144, cover details, pit diagram, inspection report and closure sampling results.

**See attached C-105, C-144, pit diagrams, closure sampling results. Cover was installed in accordance with 19.15.17.12 &13.**

DISTRICT I  
P.O. Box 1980, Hobbs, N.M. 88241-1980

DISTRICT II  
811 South First, Artesia, N.M. 88210

DISTRICT III  
1000 Rio Brazos Rd., Aztec, N.M. 87410

DISTRICT IV  
2040 South Pacheco, Santa Fe, NM 87504-2088

State of New Mexico  
Energy, Minerals & Natural Resources Department

OIL CONSERVATION DIVISION

P.O. Box 2088  
Santa Fe, NM 87504-2088

Form C-102

Revised February 21, 1994

Instructions on back

Submit to Appropriate District Office

State Lease - 4 Copies

Fee Lease - 3 Copies

☐ AMENDED REPORT

WELL LOCATION AND ACREAGE DEDICATION PLAT

<sup>1</sup> API Number <b>30-039-</b>	<sup>2</sup> Pool Code <b>48450</b>	<sup>3</sup> Pool Name <b>OTERO GALLUP</b>
<sup>4</sup> Property Code	<sup>5</sup> Property Name <b>JICARILLA 40 GD</b>	<sup>6</sup> Well Number <b>3</b>
<sup>7</sup> GRID No. <b>149052</b>	<sup>8</sup> Operator Name <b>ELM RIDGE EXPLORATION</b>	<sup>9</sup> Elevation <b>6787</b>

<sup>10</sup> Surface Location

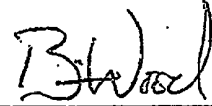
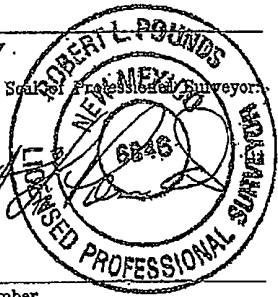
UL or lot no. <b>J</b>	Section <b>35</b>	Township <b>24 N</b>	Range <b>5 W</b>	Lot Idn	Feet from the <b>1750</b>	North/South line <b>SOUTH</b>	Feet from the <b>1730</b>	East/West line <b>EAST</b>	County <b>RIO ARriba</b>
---------------------------	----------------------	-------------------------	---------------------	---------	------------------------------	----------------------------------	------------------------------	-------------------------------	-----------------------------

<sup>11</sup> Bottom Hole Location If Different From Surface

UL or lot no.	Section	Township	Range	Lot Idn	Feet from the	North/South line	Feet from the	East/West line	County
---------------	---------	----------	-------	---------	---------------	------------------	---------------	----------------	--------

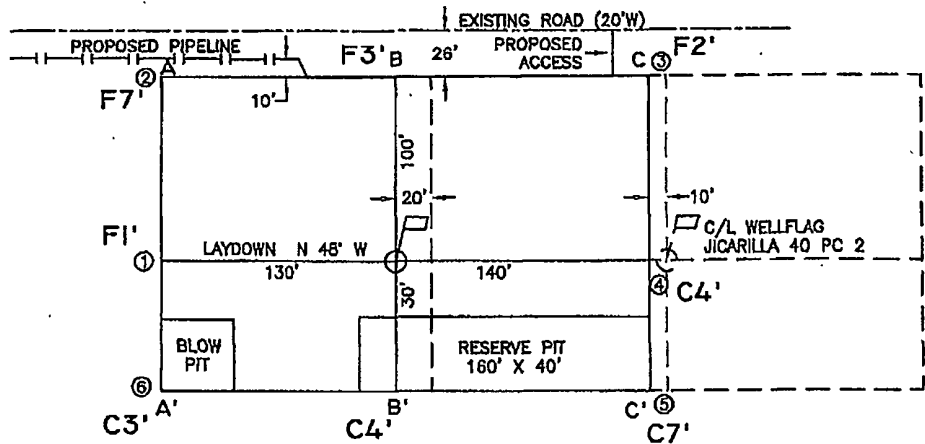
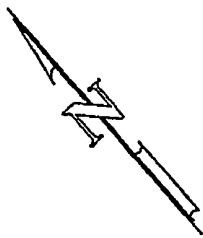
<sup>12</sup> Dedicated Acres <b>40</b>	<sup>13</sup> Joint or Infill	<sup>14</sup> Consolidation Code	<sup>15</sup> Order No.
--	-------------------------------	----------------------------------	-------------------------

NO ALLOWABLE WILL BE ASSIGNED TO THIS COMPLETION UNTIL ALL INTERESTS HAVE BEEN CONSOLIDATED  
OR A NON-STANDARD UNIT HAS BEEN APPROVED BY THE DIVISION

<sup>16</sup> S 86°58'32" E 5292.14'			5172.67'	<sup>17</sup> OPERATOR CERTIFICATION I hereby certify that the information contained herein is true and complete to the best of my knowledge and belief   Signature <b>BRIAN WOOD</b> Printed Name <b>CONSULTANT</b> Title <b>APR. 12, 2007</b> Date
		SECTION 35		<sup>18</sup> SURVEYOR CERTIFICATION I hereby certify that the well location shown on this plat was plotted from field notes of actual surveys made by me or under my supervision, and that the same is true and correct to the best of my belief.  12/7/05 Date of Survey Signature and Seal of Professional Surveyor  Certificate Number <b>16846</b>
N 0°12'02" W			1750'	
N 86°35'02" W			5184.65'	

pit center  
36.26453° N  
107.32807° W

EXHIBIT F



ELEVATION A-A'

6800	.....	.....	.....	.....
6790	.....	.....	.....	.....
6780	.....	.....	.....	.....
6770	.....	.....	.....	.....
6760	.....	.....	.....	.....

B-B'

6800	.....	.....	.....	.....
6790	.....	.....	.....	.....
6780	.....	.....	.....	.....
6770	.....	.....	.....	.....
6760	.....	.....	.....	.....

C-C'

6800	.....	.....	.....	.....
6790	.....	.....	.....	.....
6780	.....	.....	.....	.....
6770	.....	.....	.....	.....
6760	.....	.....	.....	.....

EXHIBIT E

LEASE: JICARILLA 40 GD 3

FOOTAGE: 1750' FSL, 1730' FEL

SEC. 35 TWN. 24 N RNG. 5 W N.M.P.M.

LATITUDE: 36°15'55.1" LONGITUDE: 107°19'40.9"

ELEVATION: 6787

# ELM RIDGE EXPLORATION DALLAS, TEXAS

SURVEYED: 12/7/05

REV. DATE:

APP. BY R.P.

DRAWN BY: A.D.

DATE DRAWN: 12/13/05

FILE NAME: 6355C01



P.O. BOX 3651  
FARMINGTON, NM 87499  
OFFICE: (505) 334-0408

**From:** brian wood <brian@permitswest.com>  
**Subject:** Elm Ridge Jicarilla 40 GD 3 pit closure notice  
**Date:** September 8, 2011 11:24:38 AM MDT  
**To:** ANNETTE TORIVIO <annettetorivio@jicarillaoga.com>

---

As required by NMOCD pit rule Subsection F of 19.15.17.13 NMAC,  
I am notifying the Jicarilla Apache Nation that Elm Ridge plans to close its temporary (reserve)  
pit after it is built and used using on site closure (burial) in the same pit.  
The well is staked at 1750 FSL & 1730 FEL 35-24n-5w  
The well is on lease BIA Contract 40  
API # 30-039-30248  
Please call me if you have any questions.



Client:	Elm Ridge	Project #:	03056-0366
Sample ID:	Drill Pit Comp	Date Reported:	04-23-12
Laboratory Number:	61794	Date Sampled:	04-17-12
Chain of Custody No:	13856	Date Received:	04-17-12
Sample Matrix:	Soil	Date Extracted:	04-19-12
Preservative:	Cool	Date Analyzed:	04-20-12
Condition:	Intact	Analysis Requested:	8015 TPH

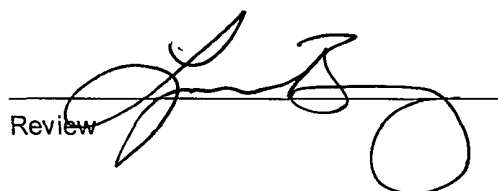
Parameter	Concentration (mg/Kg)	Det. Limit (mg/Kg)
Gasoline Range (C5 - C10)	ND	0.2
Diesel Range (C10 - C28)	5.0	0.1
Total Petroleum Hydrocarbons	5.0	

ND - Parameter not detected at the stated detection limit.

References: Method 8015B, Nonhalogenated Volatile Organics, Test Methods for Evaluating Solid Waste, SW-846, USEPA, December 1996.

Comments: **Drill Pit Closure/ Jicarilla 40 GD #3**

  
Analyst

  
Review

**Quality Assurance Report**

Client:	QA/QC	Project #:	N/A
Sample ID:	0420TCAL QA/QC	Date Reported:	04-23-12
Laboratory Number:	61736	Date Sampled:	N/A
Sample Matrix:	Methylene Chloride	Date Received:	N/A
Preservative:	N/A	Date Analyzed:	04-20-12
Condition:	N/A	Analysis Requested:	TPH

	I-Cal Date	I-Cal RF	C-Cal RF	% Difference	Accept. Range
Gasoline Range C5 - C10	04-20-12	9.9960E+02	1.0000E+03	0.04%	0 - 15%
Diesel Range C10 - C28	04-20-12	9.9960E+02	1.0000E+03	0.04%	0 - 15%

Blank Conc. (mg/L - mg/Kg)	Concentration	Detection Limit
Gasoline Range C5 - C10	ND	0.2
Diesel Range C10 - C28	ND	0.1
Total Petroleum Hydrocarbons	ND	

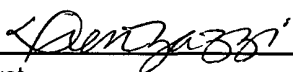
Duplicate Conc. (mg/Kg)	Sample	Duplicate	% Difference	Accept. Range
Gasoline Range C5 - C10	ND	ND	0.0%	0 - 30%
Diesel Range C10 - C28	ND	ND	0.0%	0 - 30%

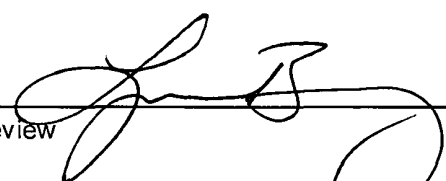
Spike Conc. (mg/Kg)	Sample	Spike Added	Spike Result	% Recovery	Accept. Range
Gasoline Range C5 - C10	ND	250	273	109%	75 - 125%
Diesel Range C10 - C28	ND	250	288	115%	75 - 125%

ND - Parameter not detected at the stated detection limit.

References: Method 8015B, Nonhalogenated Volatile Organics, Test Methods for Evaluating Solid Was  
 SW-846, USEPA, December 1996.

Comments: QA/QC for Samples 61736-61737, 61787-61792, 61794-61795 and 61806

  
 Analyst

  
 Review

Client:	Elm Ridge	Project #:	03056-0366
Sample ID:	Drill Pit Comp	Date Reported:	04-25-12
Laboratory Number:	61794	Date Sampled:	04-17-12
Chain of Custody:	13856	Date Received:	04-17-12
Sample Matrix:	Soil	Date Analyzed:	04-25-12
Preservative:	Cool	Date Extracted:	04-19-12
Condition:	Intact	Analysis Requested:	BTEX
		Dilution:	50

Parameter	Concentration (ug/Kg)	Det. Limit (ug/Kg)
Benzene	20.8	10.0
Toluene	122	10.0
Ethylbenzene	144	10.0
p,m-Xylene	478	10.0
o-Xylene	117	10.0
<b>Total BTEX</b>	<b>883</b>	


ND - Parameter not detected at the stated detection limit.

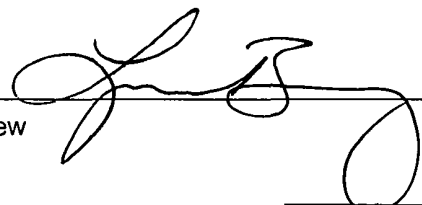
Surrogate Recoveries:	Parameter	Percent Recovery
	Fluorobenzene	99.4 %
	1,4-difluorobenzene	99.4 %
	Bromochlorobenzene	101 %

References: Method 5030B, Purge-and-Trap, Test Methods for Evaluating Solid Waste, SW-846, USEPA, December 1996.

Method 8021B, Aromatic Volatile Organics, Test Methods for Evaluating Solid Waste, SW-846, USEPA, December 1996.

**Comments: Drill Pit Closure/ Jicarilla 40 GD #3**

  
 Analyst

  
 Review





EPA METHOD 8021  
AROMATIC VOLATILE ORGANICS

Client:	N/A	Project #:	N/A
Sample ID:	0425BCAL QA/QC	Date Reported:	04-25-12
Laboratory Number:	61787	Date Sampled:	N/A
Sample Matrix:	Soil	Date Received:	N/A
Preservative:	N/A	Date Analyzed:	04-25-12
Condition:	N/A	Analysis:	BTEX
		Dilution:	50

Calibration and Detection Limits (ug/L)	I-Cal RF	C-Cal RF	%Diff	Blank Conc	Detect Limit
	Accept. Range 0-15%				
Benzene	4.5535E-06	4.5535E-06	0.000	ND	0.2
Toluene	4.4414E-06	4.4414E-06	0.000	ND	0.2
Ethylbenzene	5.0277E-06	5.0277E-06	0.000	ND	0.2
p,m-Xylene	3.7332E-06	3.7332E-06	0.000	ND	0.2
o-Xylene	5.3368E-06	5.3368E-06	0.000	ND	0.2

Duplicate Conc. (ug/Kg)	Sample	Duplicate	%Diff	Accept Range	Detect. Limit
Benzene	ND	ND	0.00	0 - 30%	10
Toluene	ND	ND	0.00	0 - 30%	10
Ethylbenzene	ND	ND	0.00	0 - 30%	10
p,m-Xylene	13.6	13.8	0.01	0 - 30%	10
o-Xylene	11.3	11.2	0.01	0 - 30%	10

Spike Conc. (ug/Kg)	Sample	Amount Spiked	Spiked Sample	% Recovery	Accept Range
Benzene	ND	2500	2690	108	39 - 150
Toluene	ND	2500	2680	107	46 - 148
Ethylbenzene	ND	2500	2680	107	32 - 160
p,m-Xylene	13.6	5000	5350	107	46 - 148
o-Xylene	11.3	2500	2700	108	46 - 148

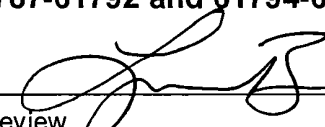
ND - Parameter not detected at the stated detection limit.

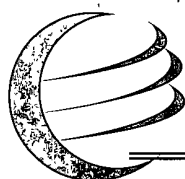
Dilution: Spike and spiked sample concentration represent a dilution proportional to sample dilution.

References: Method 5030B, Purge-and-Trap, Test Methods for Evaluating Solid Waste, SW-846, USEPA, December 1996.  
Method 8021B, Aromatic and Halogenated Volatiles by Gas Chromatography Using Photoionization and/or Electrolytic Conductivity Detectors, SW-846, USEPA December 1996.

Comments: QA/QC for Samples 61756-61759, 61787-61792 and 61794-61795

  
Analyst

  
Review



# envirotech

Analytical Laboratory

EPA METHOD 418.1  
TOTAL PETROLEUM HYDROCARBONS

Client:	Elm Ridge	Project #:	03056-0366
Sample ID:	Drill Pit Comp.	Date Reported:	04-24-12
Laboratory Number:	61794	Date Sampled:	04-17-12
Chain of Custody No:	13856	Date Received:	04-17-12
Sample Matrix:	Soil	Date Extracted:	04-23-12
Preservative:	Cool	Date Analyzed:	04-23-12
Condition:	Intact	Analysis Needed:	TPH-418.1


Parameter	Concentration (mg/kg)	Det. Limit (mg/kg)
-----------	--------------------------	--------------------------

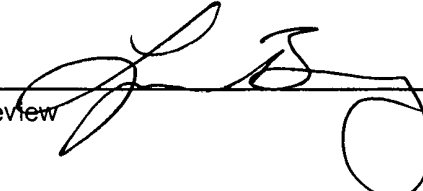
<b>Total Petroleum Hydrocarbons</b>	<b>517</b>	<b>7.4</b>
-------------------------------------	------------	------------

ND = Parameter not detected at the stated detection limit.

References: Method 418.1, Petroleum Hydrocarbons, Total Recoverable, Chemical Analysis of Water and Waste, USEPA Storet No. 4551, 1978.

Comments: **Drill Pit Closure/ Jicarilla 40 GD #3**

  
\_\_\_\_\_  
Analyst

  
\_\_\_\_\_  
Review



# envirotech

Analytical Laboratory

EPA METHOD 418.1

TOTAL PETROLEUM HYDROCARBONS

QUALITY ASSURANCE REPORT

Client:	QA/QC	Project #:	N/A
Sample ID:	QA/QC	Date Reported:	04-24-12
Laboratory Number:	04-23-TPH.QA/QC 61828	Date Sampled:	N/A
Sample Matrix:	Freon-113	Date Analyzed:	04-23-12
Preservative:	N/A	Date Extracted:	04-23-12
Condition:	N/A	Analysis Needed:	TPH

Calibration	I-Cal Date	C-Cal Date	I-Cal RF	C-Cal RF	% Difference	Accept. Range
	01-17-12	04-23-12	1,850	1,720	7.01%	+/- 10%

Blank Conc. (mg/Kg)	Concentration	Detection Limit
TPH	ND	7.4

Duplicate Conc. (mg/Kg)	Sample	Duplicate	% Difference	Accept. Range
TPH	25.9	23.7	8.49%	+/- 30%

Spike Conc. (mg/Kg)	Sample	Spike Added	Spike Result	% Recovery	Accept Range
TPH	25.9	2,000	2,440	120%	80 - 120%

ND = Parameter not detected at the stated detection limit.

References: Method 418.1, Petroleum Hydrocarbons, Total Recoverable, Chemical Analysis of Water and Waste, USEPA Storet No. 4551, 1978.

Comments: QA/QC for Samples 61828-61829, 61794, 61787-61788, 61736-61739.

Analyst

Review

Client:	Elm Ridge	Project #:	03056-0366
Sample ID:	Drill Pit Comp.	Date Reported:	04-19-12
Lab ID#:	61794	Date Sampled:	04-17-12
Sample Matrix:	Soil	Date Received:	04-17-12
Preservative:	Cool	Date Analyzed:	04-19-12
Condition:	Intact	Chain of Custody:	13856

**Parameter****Concentration (mg/Kg)****Total Chloride****1,360**

Reference: U.S.E.P.A., 4500B, "Methods for Chemical Analysis of Water and Wastes", 1983.  
Standard Methods For The Examination of Water And Waste Water", 18th ed., 1992.

Comments: **Drill Pit Closure/ Jicarilla 40 GD #3**



Analyst

  
Review

# CHAIN OF CUSTODY RECORD

13856

Client: <i>ELM Ridge</i>			Project Name / Location: <i>Drill Pit Closure / Jicarilla 406D #3</i>			ANALYSIS / PARAMETERS															
Email results to: <i>F. Aragon</i>			Sampler Name: <i>F. Aragon</i>			TPH (Method 8015)	BTEX (Method 8021)	VOC (Method 8260)	RCRA 8 Metals	Cation / Anion	RCI	TCLP with H/P	CO Table 910-1	TPH (418.1)	CHLORIDE			Sample Cool	Sample Intact		
Client Phone No.:			Client No.: <i>03056-0366</i>																		
Sample No. / Identification	Sample Date	Sample Time	Lab No.	No./Volume of Containers	Preservative			TPH	BTEX	VOC	RCRA 8 Metals	Cation / Anion	RCI	TCLP with H/P	CO Table 910-1	TPH (418.1)	CHLORIDE			Sample Cool	Sample Intact
					HgCl <sub>2</sub>	HCl	Cool														
<i>Drill Pit Comp.</i>	<i>4-17-12</i>	<i>11:45</i>	<i>01794</i>	<i>1-462</i>			<i>X</i>	<i>X</i>	<i>X</i>							<i>X</i>	<i>X</i>			<i>X</i>	<i>X</i>
Relinquished by: (Signature) <i>F. Aragon</i>				Date <i>4-17-12</i>	Time <i>16:25</i>	Received by: (Signature) <i>M. Aragon</i>				Date <i>4-17-12</i>	Time <i>16:25</i>										
Relinquished by: (Signature)				Date	Time	Received by: (Signature)				Date	Time										
Sample Matrix Soil <input checked="" type="checkbox"/> Solid <input type="checkbox"/> Sludge <input type="checkbox"/> Aqueous <input type="checkbox"/> Other <input type="checkbox"/>																					
<input type="checkbox"/> Sample(s) dropped off after hours to secure drop off area.																					





## Report Summary

Client: Elm Ridge

Chain of Custody Number: 14424

Samples Received: 09-12-12

Job Number: 03035-0366

Sample Number(s): 63189

Project Name/Location: Jicarilla 40 GD #3

Entire Report Reviewed By:

*Dene Zazari*

Date:

09-18-12

The analytical results in this report are based upon information supplied by you, the client, and are for your exclusive use. If you have any questions regarding this data package, please do not hesitate to call.

Client:	Elm Ridge	Project #:	03056-0366
Sample ID:	5 pt Comp.	Date Reported:	09-18-12
Lab ID#:	63189	Date Sampled:	09-12-12
Sample Matrix:	Soil	Date Received:	09-12-12
Preservative:	Cool	Date Analyzed:	09-17-12
Condition:	Intact	Chain of Custody:	14424

Parameter	Concentration (mg/Kg)
-----------	-----------------------

**Total Chloride****68.2**

Reference: U.S.E.P.A., 4500B, "Methods for Chemical Analysis of Water and Wastes", 1983.  
Standard Methods For The Examination of Water And Waste Water", 18th ed., 1992.

Comments: **Jicarilla 40 GD #3**

# CHAIN OF CUSTODY RECORD

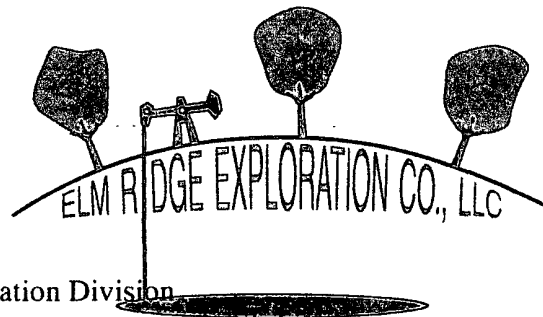
14424

Client: <u>Elm Ridge</u>			Project Name / Location: <u>Jicarilla 40 GD #3</u>			ANALYSIS / PARAMETERS															
Email results to: <u>hnelson@envirotech-inc.com</u>			Sampler Name: <u>Chris Arango</u>			TPH (Method 8015)	BTEX (Method 8021)	VOC (Method 8260)	RCRA 8 Metals	Cation / Anion	RCI	TCLP with H/P	CO Table 910-1	TPH (418.1)	CHLORIDE			Sample Cool	Sample Intact		
Client Phone No.:			Client No.: <u>03056-0366</u>																		
Sample No./ Identification	Sample Date	Sample Time	Lab No.	No./Volume of Containers	Preservative																
					HgCl <sub>2</sub>	HCl	Cool														
<u>5 pt Comp.</u>	<u>9/12/12</u>	<u>10:30a</u>	<u>63189</u>	<u>1-402</u>			<u>X</u>										<u>X</u>			<u>Y</u>	<u>Y</u>
Relinquished by: (Signature) <u>[Signature]</u>				Date	Time	Received by: (Signature) <u>[Signature]</u>												Date	Time		
Relinquished by: (Signature) <u>[Signature]</u>						Received by: (Signature)															
Sample Matrix																					
Soil <input checked="" type="checkbox"/> Solid <input type="checkbox"/> Sludge <input type="checkbox"/> Aqueous <input type="checkbox"/> Other <input type="checkbox"/>																					
<input type="checkbox"/> Sample(s) dropped off after hours to secure drop off area.																					





June 28, 2012



Mr. Jonathan Kelly  
New Mexico Oil Conservation Division  
1000 Rio Brazos Road  
Aztec, New Mexico 87410

**RE: DRILL PIT CLOSURE NOTIFICATIONS FOR THE MULTIPLE WELL SITES, SANDOVAL AND RIO ARriba COUNTY, NEW MEXICO**

Dear Mr. Kelly,

Drill pit closure activities were conducted at the following well sites in Sandoval County, New Mexico on April 9, 2012.

- 1) Chacon Amigos #9, API: 30-043-21005, Unit H, Section 2, Township 22N, Range 3W
- 2) Chacon Amigos #10, API: 30-043-21006, Unit D, Section 12, Township 22N, Range 3W
- 3) Jicarilla 429 GD #1, API: 30-043-21043, Unit N, Section 23, Township 23N, Range 5W
- 4) Bonanza #9, API: 30-043-21002, Unit J, Section 12, Township 22N, Range 3W

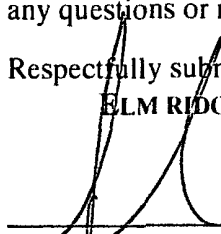
Drill pit closure activities were conducted at the following well site in Rio Arriba County, New Mexico on April 17, 2012.

- 1) Jicarilla 40 GD #3, API: 30-039-30248, Unit J, Section 35, Township 24N, Range 5W

Pre-construction notifications of the on-site closure activities of a temporary drill pit were made during the permit application process. Unfortunately, notification of drill pit closure activity dates were not submitted to the Jicarilla Apache Nation Oil and Gas Administration or the New Mexico Oil Conservation Division (NMOCD). Re-vegetation application rates and seeding techniques were conducted in pursuant to the BLM MOU and the NMOCD Approved Closure Plan. Drill pit closure activities were conducted in conformance to the requirements stated in NMAC 19.15.17.13 Closure Requirements for a Permitted Temporary Pit.

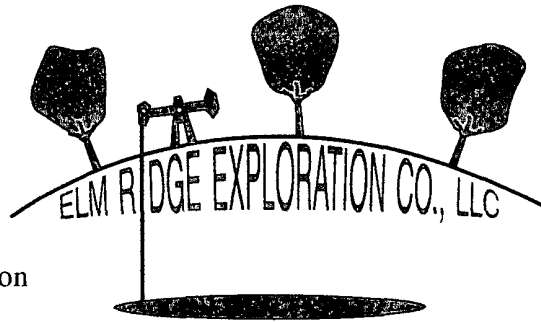
We truly apologize for our oversight to provide notification of drill pit closure activities, and will ensure that notifications will be sent prior to drill pit closure activities in the future. If you have any questions or require additional information, please contact our office at (505) 632-0615.

Respectfully submitted,  
**ELM RIDGE RESOURCES**

  
Amy Mackey  
Elm Ridge Resources  
[amymackey@elmridge.net](mailto:amymackey@elmridge.net)

June 28, 2012

Ms. Annette Torivio  
Jicarilla Apache Nation  
Oil and Gas Administration  
#6 Dulce Rock Road  
Dulce, New Mexico 87528



ConocoPhillips  
Hancock (hBr) Well Site  
92115-1296

Phone: (575) 759-3485

**RE: DRILL PIT CLOSURE NOTIFICATIONS FOR THE MULTIPLE WELL SITES, SANDOVAL AND RIO ARriba COUNTY, NEW MEXICO**

Dear Ms. Torivio,

Drill pit closure activities were conducted at the following well sites in Sandoval County, New Mexico on April 9, 2012.

- 1) Chacon Amigos #9, API: 30-043-21005, Unit H, Section 2, Township 22N, Range 3W
- 2) Chacon Amigos #10, API: 30-043-21006, Unit D, Section 12, Township 22N, Range 3W
- 3) Jicarilla 429 GD #1, API: 30-043-21043, Unit N, Section 23, Township 23N, Range 5W
- 4) Bonanza #9, API: 30-043-21002, Unit J, Section 12, Township 22N, Range 3W

Drill pit closure activities were conducted at the following well site in Rio Arriba County, New Mexico on April 17, 2012.

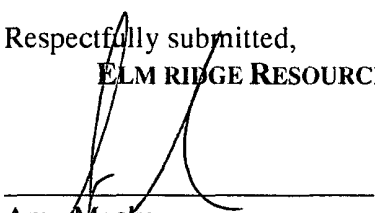
- 1) Jicarilla 40 GD #3, API: 30-039-30248, Unit J, Section 35, Township 24N, Range 5W

Pre-construction notifications of the on-site closure activities of a temporary drill pit were made during the permit application process. Unfortunately, notification of drill pit closure activity dates were not submitted to the Jicarilla Apache Nation Oil and Gas Administration or the New Mexico Oil Conservation Division (NMOCD). Re-vegetation application rates and seeding techniques were conducted in pursuant to the BLM MOU and the NMOCD Approved Closure Plan. Drill pit closure activities were conducted in conformance to the requirements stated in NMAC 19.15.17.13 Closure Requirements for a Permitted Temporary Pit.

We truly apologize for our oversight to provide notification of drill pit closure activities, and will ensure that notifications will be sent prior to drill pit closure activities in the future. If you have any questions or require additional information, please contact our office at (505) 632-0615.

Respectfully submitted,

**ELM RIDGE RESOURCES**

  
Amy Mackey  
Elm Ridge Resources  
[amymackey@elmridge.net](mailto:amymackey@elmridge.net)

English

Customer Service

USPS Mobile

Register / Sign In



Search USPS.com or Track Packages

Quick Tools

Ship a Package

Send Mail

Manage Your Mail

Shop

Business Solutions

## Track &amp; Confirm

GET EMAIL UPDATES

PRINT DETAILS

YOUR LABEL NUMBER

7007149000053987592

SERVICE

STATUS OF YOUR ITEM

DATE &amp; TIME

LOCATION

FEATURES

Delivered

July 05, 2012, 9:19 am

DULCE, NM 87528

Certified Mail™

Notice Left

July 02, 2012, 11:32 am

DULCE, NM 87528

Depart USPS Sort Facility

June 30, 2012

ALBUQUERQUE, NM 87101

Processed through USPS Sort Facility

June 29, 2012, 11:36 pm

ALBUQUERQUE, NM 87101

U.S. Postal Service™  
**CERTIFIED MAIL™ RECEIPT**  
 (Domestic Mail Only, No Insurance Coverage Provided)  
 For delivery information visit our website at www.usps.com®

**OFFICIAL USE**

Postage	\$ .45	Brenda 6/29/12 Postmark Here #92115-1296 03056-0361 AL
Certified Fee	2.95	
Return Receipt Fee (Endorsement Required)	2.35	
Restricted Delivery Fee (Endorsement Required)		
<b>Total Postage &amp; Fees</b>	<b>\$ 5.75</b>	

Sent To: Ms. Annette Torivio  
 Street, Apt. No., or PO Box No.: Jicarilla Apache Nation Oil & Gas Admin  
 City, State, ZIP+4: #6 Dulce Rock Road  
 Dulce, NM 87528

PS Form 3800, August 2006 See Reverse for Instructions

## ON ABOUT USPS.COM

About USPS Home •  
 Newsroom •  
 Mail Service Updates •  
 Forms & Publications •  
 Careers •

Chacon Amigos #10  
 Drill pit closure

## SENDER: COMPLETE THIS SECTION

- Complete items 1, 2, and 3. Also complete item 4 if Restricted Delivery is desired.
- Print your name and address on the reverse so that we can return the card to you.
- Attach this card to the back of the mailpiece, or on the front if space permits.

## 1. Article Addressed to:

Ms. Annette Torivio  
 Jicarilla Apache Nation Oil & Gas Admin  
 #6 Dulce Rock Road  
 Dulce, NM 87528

2. Article Number  
(Transfer from service label)

7007 1490 0000 5398 7592

## COMPLETE THIS SECTION ON DELIVERY

## A. Signature

x

Shannon Largo

☐ Agent☐ Addressee

## B. Received by (Printed Name)

Shannon Largo

## C. Date of Delivery

7/5/12

D. Is delivery address different from item 1? ☐ YesIf YES, enter delivery address below: ☐ No

## 3. Service Type

☒ Certified Mail☐ Express Mail☐ Registered☒ Return Receipt for Merchandise☐ Insured Mail☐ C.O.D.

## 4. Restricted Delivery? (Extra Fee)

☐ Yes

E-MAILED  
12/15/12

WELL NAME: <u>Jicarilla 40GD #3</u> <u>30-001-5248</u>		OPEN PIT INSPECTION FORM									
INSPECTOR: <u>Johnny Angel Jr</u>		DATE: <u>11/21/11</u> <u>11/25/11</u> <u>12/10/11</u>									
*Please request for pit extension after 24 weeks		Week 1	Week 2	Week 3	Week 4	Week 5	Week 6	Week 7	Week 8	Week 9	
PIT STATUS		<input checked="" type="checkbox"/> Drilled <input type="checkbox"/> Completed <input type="checkbox"/> Clean-Up	<input checked="" type="checkbox"/> Drilled <input type="checkbox"/> Completed <input type="checkbox"/> Clean-Up	<input checked="" type="checkbox"/> Drilled <input type="checkbox"/> Completed <input type="checkbox"/> Clean-Up	<input checked="" type="checkbox"/> Drilled <input type="checkbox"/> Completed <input type="checkbox"/> Clean-Up	<input checked="" type="checkbox"/> Drilled <input type="checkbox"/> Completed <input type="checkbox"/> Clean-Up	<input checked="" type="checkbox"/> Drilled <input type="checkbox"/> Completed <input type="checkbox"/> Clean-Up	<input checked="" type="checkbox"/> Drilled <input type="checkbox"/> Completed <input type="checkbox"/> Clean-Up	<input type="checkbox"/> Drilled <input type="checkbox"/> Completed <input type="checkbox"/> Clean-Up	<input type="checkbox"/> Drilled <input type="checkbox"/> Completed <input type="checkbox"/> Clean-Up	<input checked="" type="checkbox"/> Drilled <input checked="" type="checkbox"/> Completed <input type="checkbox"/> Clean-Up
LOCATION	Is the location marked with the proper flagging? (Const. Zone, poles, pipelines, etc.)	<input checked="" type="checkbox"/> Yes <input type="checkbox"/> No	<input checked="" type="checkbox"/> Yes <input type="checkbox"/> No	<input checked="" type="checkbox"/> Yes <input type="checkbox"/> No	<input type="checkbox"/> Yes <input type="checkbox"/> No	<input type="checkbox"/> Yes <input type="checkbox"/> No	<input type="checkbox"/> Yes <input type="checkbox"/> No	<input type="checkbox"/> Yes <input type="checkbox"/> No	<input type="checkbox"/> Yes <input type="checkbox"/> No	<input type="checkbox"/> Yes <input type="checkbox"/> No	
	Is the temporary well sign on location and visible from access road?	<input checked="" type="checkbox"/> Yes <input type="checkbox"/> No	<input checked="" type="checkbox"/> Yes <input type="checkbox"/> No	<input checked="" type="checkbox"/> Yes <input type="checkbox"/> No	<input type="checkbox"/> Yes <input type="checkbox"/> No	<input type="checkbox"/> Yes <input type="checkbox"/> No	<input type="checkbox"/> Yes <input type="checkbox"/> No	<input type="checkbox"/> Yes <input type="checkbox"/> No	<input type="checkbox"/> Yes <input type="checkbox"/> No	<input type="checkbox"/> Yes <input type="checkbox"/> No	
ENVIRONMENTAL COMPLIANCE	Is the access road in good driving condition? (deep ruts, bladed)	<input checked="" type="checkbox"/> Yes <input type="checkbox"/> No	<input checked="" type="checkbox"/> Yes <input type="checkbox"/> No	<input checked="" type="checkbox"/> Yes <input type="checkbox"/> No	<input type="checkbox"/> Yes <input type="checkbox"/> No	<input type="checkbox"/> Yes <input type="checkbox"/> No	<input type="checkbox"/> Yes <input type="checkbox"/> No	<input type="checkbox"/> Yes <input type="checkbox"/> No	<input type="checkbox"/> Yes <input type="checkbox"/> No	<input type="checkbox"/> Yes <input type="checkbox"/> No	
	Are the culverts free from debris or any object preventing flow?	<input checked="" type="checkbox"/> Yes <input type="checkbox"/> No	<input checked="" type="checkbox"/> Yes <input type="checkbox"/> No	<input checked="" type="checkbox"/> Yes <input type="checkbox"/> No	<input type="checkbox"/> Yes <input type="checkbox"/> No	<input type="checkbox"/> Yes <input type="checkbox"/> No	<input type="checkbox"/> Yes <input type="checkbox"/> No	<input type="checkbox"/> Yes <input type="checkbox"/> No	<input type="checkbox"/> Yes <input type="checkbox"/> No	<input type="checkbox"/> Yes <input type="checkbox"/> No	
	Is the top of the location bladed and in good operating condition?	<input checked="" type="checkbox"/> Yes <input type="checkbox"/> No	<input checked="" type="checkbox"/> Yes <input type="checkbox"/> No	<input checked="" type="checkbox"/> Yes <input type="checkbox"/> No	<input type="checkbox"/> Yes <input type="checkbox"/> No	<input type="checkbox"/> Yes <input type="checkbox"/> No	<input type="checkbox"/> Yes <input type="checkbox"/> No	<input type="checkbox"/> Yes <input type="checkbox"/> No	<input type="checkbox"/> Yes <input type="checkbox"/> No	<input type="checkbox"/> Yes <input type="checkbox"/> No	
	Is the fence stock-proof? (fences tight, barbed wire, fence clips in place?)	<input checked="" type="checkbox"/> Yes <input type="checkbox"/> No	<input checked="" type="checkbox"/> Yes <input type="checkbox"/> No	<input checked="" type="checkbox"/> Yes <input type="checkbox"/> No	<input type="checkbox"/> Yes <input type="checkbox"/> No	<input type="checkbox"/> Yes <input type="checkbox"/> No	<input type="checkbox"/> Yes <input type="checkbox"/> No	<input type="checkbox"/> Yes <input type="checkbox"/> No	<input type="checkbox"/> Yes <input type="checkbox"/> No	<input type="checkbox"/> Yes <input type="checkbox"/> No	
	Is the pit liner in good operating condition? (no tears, up-rooting corners, etc.)	<input checked="" type="checkbox"/> Yes <input type="checkbox"/> No	<input checked="" type="checkbox"/> Yes <input type="checkbox"/> No	<input checked="" type="checkbox"/> Yes <input type="checkbox"/> No	<input type="checkbox"/> Yes <input type="checkbox"/> No	<input type="checkbox"/> Yes <input type="checkbox"/> No	<input type="checkbox"/> Yes <input type="checkbox"/> No	<input type="checkbox"/> Yes <input type="checkbox"/> No	<input type="checkbox"/> Yes <input type="checkbox"/> No	<input type="checkbox"/> Yes <input type="checkbox"/> No	
	Is the the location free from trash, oil stains and other materials? (cables, pipe threads, etc.)	<input checked="" type="checkbox"/> Yes <input type="checkbox"/> No	<input checked="" type="checkbox"/> Yes <input type="checkbox"/> No	<input checked="" type="checkbox"/> Yes <input type="checkbox"/> No	<input type="checkbox"/> Yes <input type="checkbox"/> No	<input type="checkbox"/> Yes <input type="checkbox"/> No	<input type="checkbox"/> Yes <input type="checkbox"/> No	<input type="checkbox"/> Yes <input type="checkbox"/> No	<input type="checkbox"/> Yes <input type="checkbox"/> No	<input type="checkbox"/> Yes <input type="checkbox"/> No	
	Does the pit contain two feet of free board? (check the water levels)	<input checked="" type="checkbox"/> Yes <input type="checkbox"/> No	<input checked="" type="checkbox"/> Yes <input type="checkbox"/> No	<input checked="" type="checkbox"/> Yes <input type="checkbox"/> No	<input type="checkbox"/> Yes <input type="checkbox"/> No	<input type="checkbox"/> Yes <input type="checkbox"/> No	<input type="checkbox"/> Yes <input type="checkbox"/> No	<input type="checkbox"/> Yes <input type="checkbox"/> No	<input type="checkbox"/> Yes <input type="checkbox"/> No	<input type="checkbox"/> Yes <input type="checkbox"/> No	
	Is there any standing water on the blow pit? <u>N/A</u>	<input type="checkbox"/> Yes <input type="checkbox"/> No	<input type="checkbox"/> Yes <input type="checkbox"/> No	<input type="checkbox"/> Yes <input type="checkbox"/> No	<input type="checkbox"/> Yes <input type="checkbox"/> No	<input type="checkbox"/> Yes <input type="checkbox"/> No	<input type="checkbox"/> Yes <input type="checkbox"/> No	<input type="checkbox"/> Yes <input type="checkbox"/> No	<input type="checkbox"/> Yes <input type="checkbox"/> No	<input type="checkbox"/> Yes <input type="checkbox"/> No	
	Are the pits free of trash and oil?	<input checked="" type="checkbox"/> Yes <input type="checkbox"/> No	<input type="checkbox"/> Yes <input type="checkbox"/> No	<input type="checkbox"/> Yes <input type="checkbox"/> No	<input type="checkbox"/> Yes <input type="checkbox"/> No	<input type="checkbox"/> Yes <input type="checkbox"/> No	<input type="checkbox"/> Yes <input type="checkbox"/> No	<input type="checkbox"/> Yes <input type="checkbox"/> No	<input type="checkbox"/> Yes <input type="checkbox"/> No	<input type="checkbox"/> Yes <input type="checkbox"/> No	
	Are there diversion ditches around the pits for natural drainage?	<input type="checkbox"/> Yes <input checked="" type="checkbox"/> No	<input type="checkbox"/> Yes <input type="checkbox"/> No	<input type="checkbox"/> Yes <input type="checkbox"/> No	<input type="checkbox"/> Yes <input type="checkbox"/> No	<input type="checkbox"/> Yes <input type="checkbox"/> No	<input type="checkbox"/> Yes <input type="checkbox"/> No	<input type="checkbox"/> Yes <input type="checkbox"/> No	<input type="checkbox"/> Yes <input type="checkbox"/> No	<input type="checkbox"/> Yes <input type="checkbox"/> No	
Is there a Manifold on location?	<input checked="" type="checkbox"/> Yes <input type="checkbox"/> No	<input type="checkbox"/> Yes <input type="checkbox"/> No	<input type="checkbox"/> Yes <input type="checkbox"/> No	<input type="checkbox"/> Yes <input type="checkbox"/> No	<input type="checkbox"/> Yes <input type="checkbox"/> No	<input type="checkbox"/> Yes <input type="checkbox"/> No	<input type="checkbox"/> Yes <input type="checkbox"/> No	<input type="checkbox"/> Yes <input type="checkbox"/> No	<input type="checkbox"/> Yes <input type="checkbox"/> No		
Is the Manifold free of leaks? Are the hoses in good condition?	<input checked="" type="checkbox"/> Yes <input type="checkbox"/> No	<input type="checkbox"/> Yes <input type="checkbox"/> No	<input type="checkbox"/> Yes <input type="checkbox"/> No	<input type="checkbox"/> Yes <input type="checkbox"/> No	<input type="checkbox"/> Yes <input type="checkbox"/> No	<input type="checkbox"/> Yes <input type="checkbox"/> No	<input type="checkbox"/> Yes <input type="checkbox"/> No	<input type="checkbox"/> Yes <input type="checkbox"/> No	<input type="checkbox"/> Yes <input type="checkbox"/> No		
Was the OCD contacted?	<input type="checkbox"/> Yes <input checked="" type="checkbox"/> No	<input type="checkbox"/> Yes <input type="checkbox"/> No	<input type="checkbox"/> Yes <input type="checkbox"/> No	<input type="checkbox"/> Yes <input type="checkbox"/> No	<input type="checkbox"/> Yes <input type="checkbox"/> No	<input type="checkbox"/> Yes <input type="checkbox"/> No	<input type="checkbox"/> Yes <input type="checkbox"/> No	<input type="checkbox"/> Yes <input type="checkbox"/> No	<input type="checkbox"/> Yes <input type="checkbox"/> No	<input type="checkbox"/> Yes <input type="checkbox"/> No	
PICTURE TAKEN	<input type="checkbox"/> Yes <input checked="" type="checkbox"/> No	<input type="checkbox"/> Yes <input type="checkbox"/> No	<input type="checkbox"/> Yes <input type="checkbox"/> No	<input type="checkbox"/> Yes <input type="checkbox"/> No	<input type="checkbox"/> Yes <input type="checkbox"/> No	<input type="checkbox"/> Yes <input type="checkbox"/> No	<input type="checkbox"/> Yes <input type="checkbox"/> No	<input type="checkbox"/> Yes <input type="checkbox"/> No	<input type="checkbox"/> Yes <input type="checkbox"/> No	<input type="checkbox"/> Yes <input type="checkbox"/> No	
COMMENTS	No ditches no repairs	<u>11/21/11</u> rig on location	<u>12/10/11</u> Rig off of location	Road and location muddy ruts pit has debris and hose in it	Pit has debris track tanks on location Rig moving on location.	Ditches debris in it location Needs bladed on ditches roads rough no ditches	rig on location	Rig on location	Sample pit took pictures location needs bladed		



June 25<sup>th</sup>, 2012

Mr. Jonathan Kelly  
New Mexico Oil Conservation Division  
1000 Rio Brazos Road  
Aztec, NM 87410

RE: Drill Pit Inspections

Dear Mr. Kelly,

The Drill Pit Permit required daily inspections of the pit liner for all open pits. Visual inspections were done during drilling operations, but there was no documentation done. As you are aware there has been little to no drilling activity in the San Juan Basin for the past couple years. Due to the low activity, the employees that were hired by the drilling company are inexperienced and they failed to document the drill pit inspections.

Now that we are aware that the rig crew failed to follow the proper procedures; we have taken measures to ensure that all required paper work is thoroughly read and the rules are followed.

Best Regards,



Amy Mackey  
Elm Ridge Exploration CO LLC  
Amackey1@elmridge.net

ELM RIDGE EXPLORATION  
JICARILLA 40 GD #3  
SITE RESTORATION PHOTOGRAPHY  
JOB NUMBER: 03056-0366  
PHOTOS TAKEN: APRIL 17, 2012



Photo 1: Jicarilla 40 GD #3 Well Site

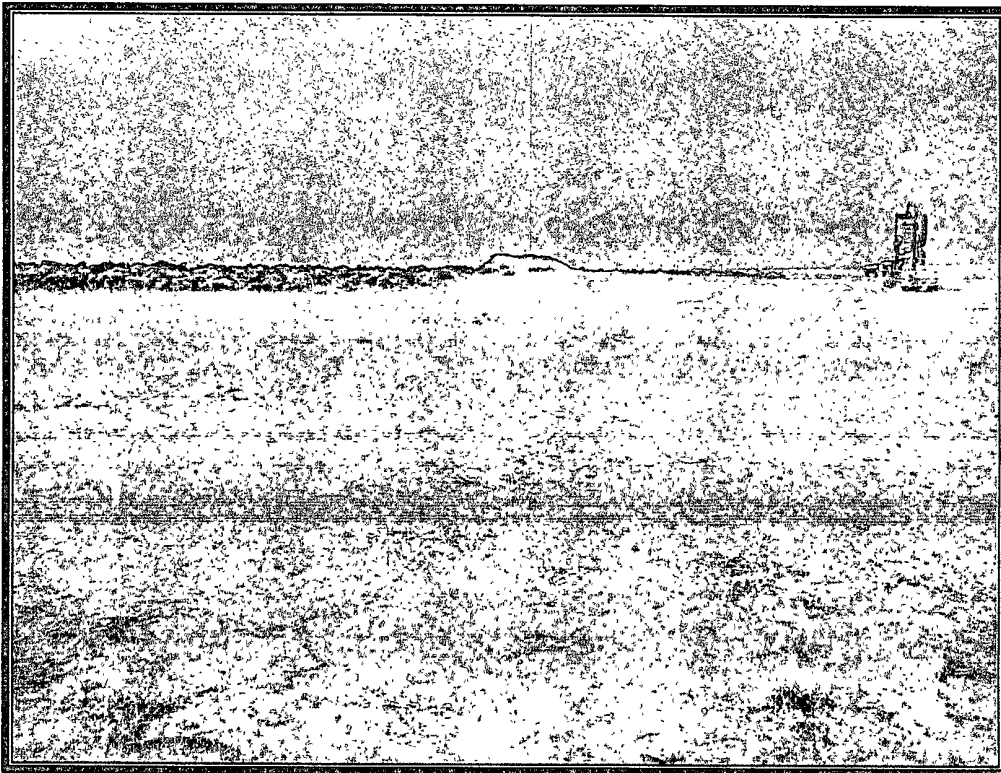


Photo 2: Overview of Recontoured/Reseeded Area

ELM RIDGE EXPLORATION  
JICARILLA 40 GD #3  
SITE RESTORATION PHOTOGRAPHY  
JOB NUMBER: 03056-0366  
PHOTOS TAKEN: APRIL 17, 2012

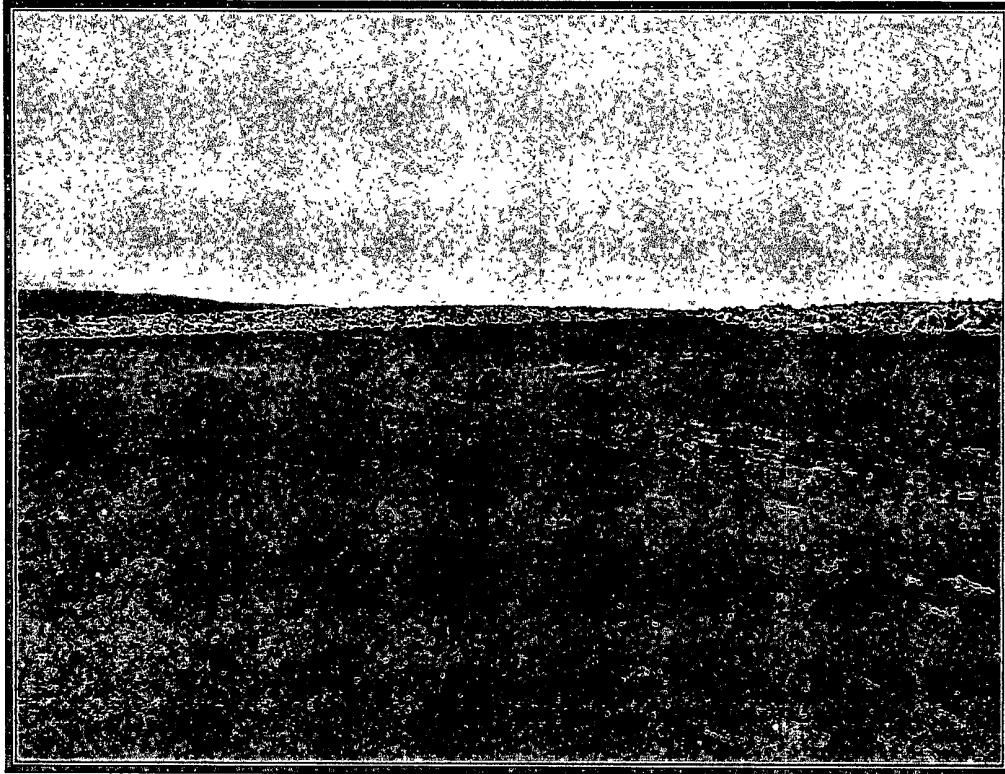


Photo 3: Another View of Recontoured/Reseeded Area

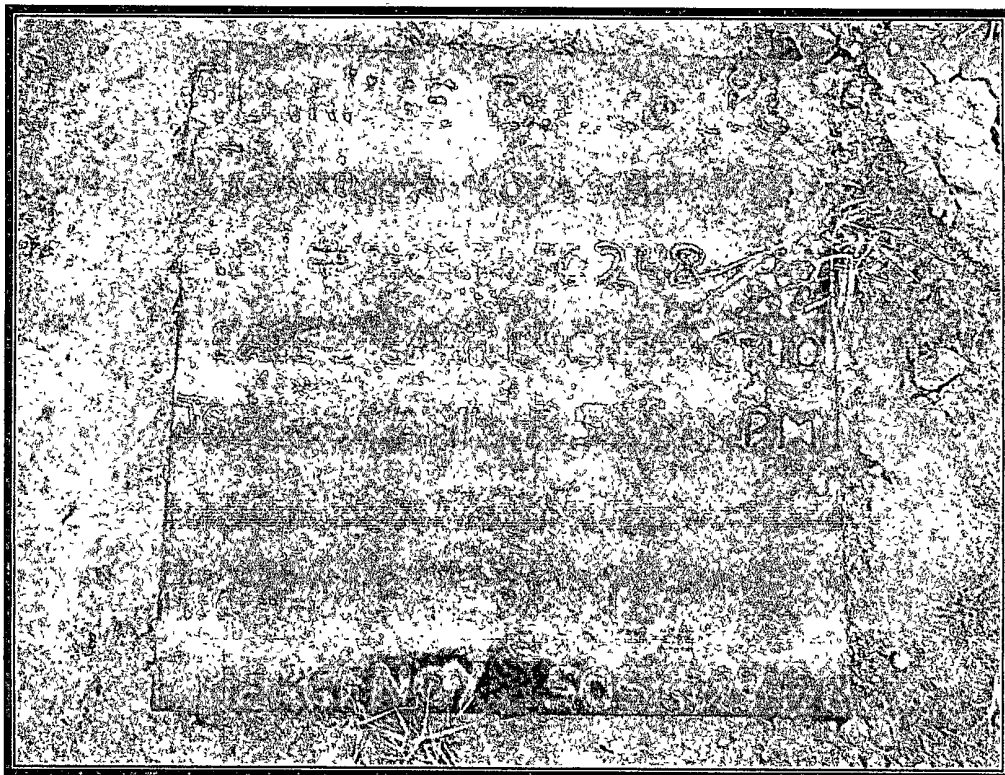


Photo 4: Pit Marker for Jicarilla 40 GD #3 Well Site