

submitted in lieu of Form 3160-5

UNITED STATES  
DEPARTMENT OF THE INTERIOR  
BUREAU OF LAND MANAGEMENT

Sundry Notices and Reports on Wells

1. Type of Well  
GAS

2. Name of Operator  
**BURLINGTON**  
RESOURCES OIL & GAS COMPANY LP

3. Address & Phone No. of Operator  
PO Box 4289, Farmington, NM 87499 (505) 326-9700

4. Location of Well, Footage, Sec., T, R, M  
Sec., T--N, R--W, NMPM

Unit M (SWSW), 800' FSL & 800' FWL, Sec. 24, T28N, R6W NMPM

5. Lease Number  
NM- 013657

6. If Indian, All. or  
Tribe Name

7. Unit Agreement Name  
San Juan 28-6 Unit

8. Well Name & Number

#152

9. API Well No.

30-039-20379

10. Field and Pool

Blanco MV/Basin DK

11. County and State  
Rio Arriba Co., NM

12. CHECK APPROPRIATE BOX TO INDICATE NATURE OF NOTICE, REPORT, OTHER DATA

Type of Submission  
☒ Notice of Intent

Type of Action  
☐ Abandonment ☐ Change of Plans  
☒ Recompletion ☐ New Construction  
☐ Subsequent Report ☐ Plugging ☐ Non-Routine Fracturing  
☐ Final Abandonment ☐ Casing Repair ☐ Water Shut off  
☐ Altering Casing ☐ Conversion to Injection

☒ Other - Commingle

13. Describe Proposed or Completed Operations

It is intended to recompleat the subject well to the Mesa Verde formation according to the attached procedure and wellbore diagram. The well then be down hole commingled. A down hole commingle application will be submitted for approval.

14. I hereby certify that the foregoing is true and correct.

Signed Philana Thompson Title Regulatory Associate Date 3/31/05

(This space for Federal or State Office use)

APPROVED BY Petr. Eng Title Petr. Eng

CONDITION OF APPROVAL, if any:

Title 18 U.S.C. Section 1001, makes it a crime for any person knowingly and willfully to make any department or agency of the United States any false, fictitious or fraudulent statements or representations as to any matter within its jurisdiction.

2005 APR 1 PM 3 52  
RECEIVED  
077 FARMINGTON NM

CONDITIONS OF APPROVAL  
Adhere to previously issued stipulations.

NMOC

**San Juan 28-6 Unit #152 Sundry Procedure**  
Unit M, Section 24, T28N, R06W

1. MIRU completion rig. TOOH with tubing.
2. Set cast iron bridge plug at 7562'. Run CBL.
3. Pressure test casing to +/-3500 psi for 15 minutes.
4. Perforate and fracture stimulate the Point Lookout, Menefee, Cliff House and Lewis formations.
5. Flow back well. Mill out frac plugs and cast iron bridge plug over Dakota.
6. Clean out as required.
7. Land tubing. RDMO rig.
8. Return well to production as a commingled DK/MV producer.

# San Juan 28-6 Unit #152

800' FSL , 800' FWL

Unit M, Section 24, T28N, R06W

Rio Arriba County, NM

LAT: 36° 38.49

LONG: 107° 25.45

GL = 6,557'

KB= 6,567'

## Current Wellbore Diagram

### Surface Casing:

9-5/8" 32.3# H-40  
Set @ 232'  
TOC @ circ to surf

232'

### Intermediate Casing:

7" 20 K-55  
Set: 3,687'  
TOC @ 2700' TS

### Production Casing:

4-1/2" 10.5#, 11.6 K-55  
Set: 7,890'  
TOC @ 3095' TS  
11.6# to 6468'

### Tubing:

1-1/2" 2.9# J-55  
Set: 7813  
SN: 7,780'

Ojo Alamo	0,000'
Kirtland	0,000'
Fruitland	0,000'
Pictured Cliffs	3,378'
Heur Bent.	3,973'
Chacra	4,330'
Cliffhouse	5,051'
Menefee	5,196'
Point Lookout	5,547'
Mancos	6,072'
Gallup	6,755'
Greenhorn	7,509'
Graneros	7,568'
Two Wells	7,612'

### Existing Stimulation:

#### Dakota

7612' - 7808'

35,000# sand, 35,280 gal slickwater

7,890'

PBTD= 7,866'

TD= 7,890'

# San Juan 28-6 Unit #152

800' FSL , 800' FWL

Unit M, Section 24, T28N, R06W

Rio Arriba County, NM

LAT: 36° 38.49

LONG: 107° 25.45

GL = 6,557'

KB= 6,567'

## Proposed Wellbore Diagram

### Surface Casing:

9-5/8" 32.3# H-40  
Set @ 232'  
TOC @ circ to surf

232'

### Intermediate Casing:

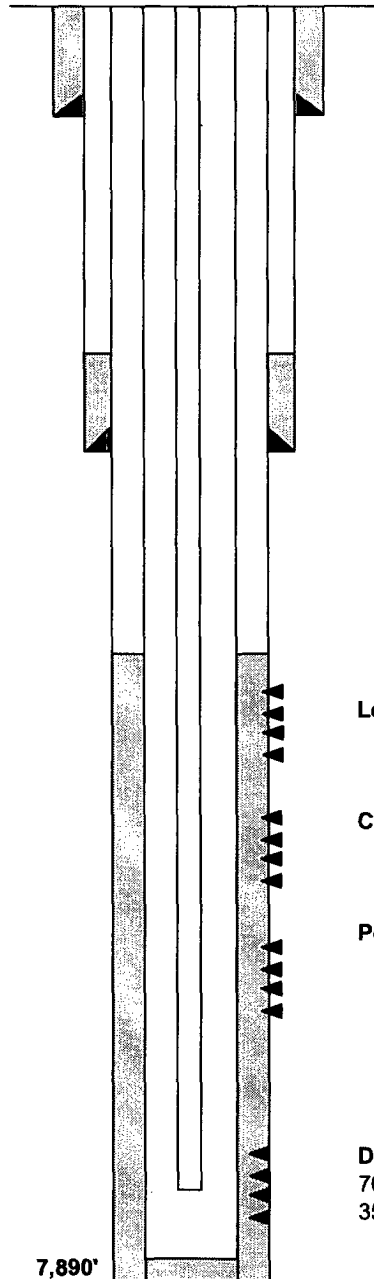
7" 20 K-55  
Set: 3,687'  
TOC @ 2700' TS

### Production Casing:

4-1/2" 10.5#, 11.6 K-55  
Set: 7,890'  
TOC @ 3095' TS  
11.6# to 6468'

### Tubing:

2-3/8" 4.7# J-55  
Set: 0  
SN: '



Ojo Alamo 0,000'  
Kirtland 0,000'  
Fruitland 0,000'  
Pictured Cliffs 3,378'  
Heur Bent. 3,973'  
Chacra 4,330'  
Cliffhouse 5,051'  
Menefee 5,196'  
Point Lookout 5,547'  
Mancos 6,072'  
Gallup 6,755'  
Greenhorn 7,509'  
Graneros 7,568'  
Two Wells 7,612'

Lewis

0

Cliff House/Menefee

0

Point Lookout/Menefee

0

Dakota

7612' - 7808'

35,000# sand, 35,280 gal slickwater

PBTD= 7,866'

TD= 7,890'

District I

1625 N. French Dr., Hobbs, NM 88240

District II

1301 W. Grand Ave., Artesia, NM 88210

District III

1000 Rio Brazos Rd., Aztec, NM 87410

District IV1220 S. St Francis Dr., Santa Fe, NM  
87505

State of New Mexico  
Energy, Minerals and Natural Resources

Oil Conservation Division

1220 S. St Francis Dr.

Santa Fe, NM 87505

Form C-102

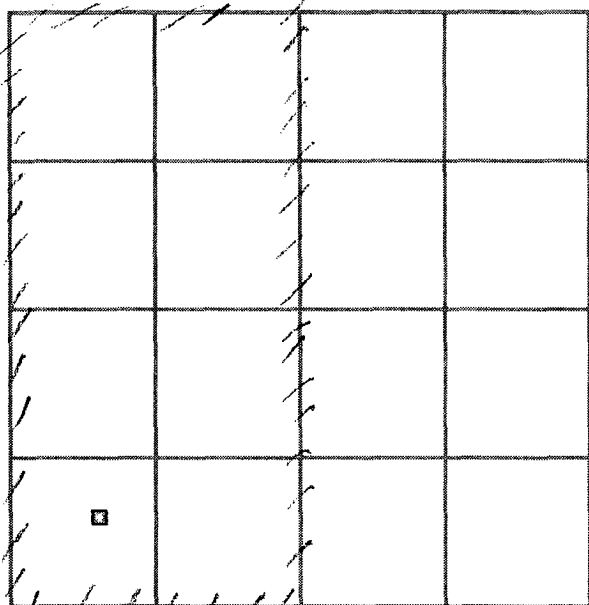
Permit 9108

### WELL LOCATION AND ACREAGE DEDICATION PLAT

API Number <b>30-039-20319</b>	Pool Name <b>BLANCO-MESAVERDE (PRORATED GAS)</b>	Pool Code <b>72319</b>
Property Code <b>7462</b>	Property Name <b>SAN JUAN 28 6 UNIT</b>	Well No. <b>152</b>
OGRID No. <b>14538</b>	Operator Name <b>BURLINGTON RESOURCES OIL &amp; GAS CO</b>	Elevation <b>6557</b>

### Surface And Bottom Hole Location

UL or Lot <b>M</b>	Section <b>24</b>	Township <b>28N</b>	Range <b>06W</b>	Lot Idn	Feet From <b>800</b>	N/S Line <b>S</b>	Feet From <b>800</b>	E/W Line <b>W</b>	County <b>Rio Arriba</b>
Dedicated Acres <b>320</b>		Joint or Infill		Consolidation Code		Order No.			



#### OPERATOR CERTIFICATION

*I hereby certify that the information contained herein is true and complete to the best of my knowledge and belief.*

Electronically Signed By:

Title: *Regulatory Associate*Date: *3/31/05*

#### SURVEYOR CERTIFICATION

*I hereby certify that the well location shown on this plat was plotted from field notes of actual surveys made by me or under my supervision, and that the same is true and correct to the best of my belief.*

Surveyed By: David Vilven

Date of Survey: 03/12/1971

Certificate Number: 1760