

UNITED STATES
DEPARTMENT OF THE INTERIOR
BUREAU OF LAND MANAGEMENT

Sundry Notices and Reports on Wells

1. Type of Well
GAS

2. Name of Operator
BURLINGTON
RESOURCES OIL & GAS COMPANY LP

3. Address & Phone No. of Operator

PO Box 4289, Farmington, NM 87499 (505) 326-9700

4. Location of Well, Footage, Sec., T, R, M
Sec., T--N, R--W, NMPM

Unit G (SWNE), 1700' FNL & 1650' FEL, Sec. 16, T28N, R5W NMPM

5. Lease Number
SF-079250

6. If Indian, All. or
Tribe Name

7. Unit Agreement Name
San Juan 28-5 Unit

8. Well Name & Number

#84

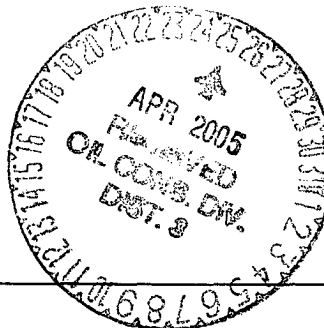
9. API Well No.

30-039-20360

10. Field and Pool

Blanco MV/Basin DK

11. County and State
Rio Arriba Co., NM



12. CHECK APPROPRIATE BOX TO INDICATE NATURE OF NOTICE, REPORT, OTHER DATA

Type of Submission

☒ Notice of Intent

☐ Subsequent Report

☐ Final Abandonment

Type of Action

☐ Abandonment

☒ Recompletion

☐ Plugging

☐ Casing Repair

☐ Altering Casing

☐ Change of Plans

☐ New Construction

☐ Non-Routine Fracturing

☐ Water Shut off

☐ Conversion to Injection

☒ Other - Commingle

13. Describe Proposed or Completed Operations

It is intended to recomplate the subject well to the Mesa Verde formation according to the attached procedure and wellbore diagram. The well then be down hole commingled. A down hole commingle application will be submitted for approval.

14. I hereby certify that the foregoing is true and correct.

Signed Philana Thompson Philana Thompson Title Regulatory Associate Date 3/21/05

(This space for Federal or State Office use)

APPROVED BY [Signature] Title Petr. Eng.

CONDITION OF APPROVAL, if any:

Title 18 U.S.C. Section 1001, makes it a crime for any person knowingly and willfully to make any department or agency of the United States any false, fictitious or fraudulent statements or representations as to any matter within its jurisdiction.

CONDITIONS OF APPROVAL

Adhere to previously issued stipulations.

NMOCD

2005 APR 22 10:22 AM
RECEIVED
BURLINGTON NM

San Juan 28-5 Unit #84 Sundry Procedure

Unit G, Section 16, T28N, R05W

1. MIRU completion rig. TOOH with tubing.
2. Set cast iron bridge plug at 7738'. Run CBL.
3. Pressure test casing to +/-3500 psi for 15 minutes.
4. Perforate and fracture stimulate the Point Lookout, Menefee, and Cliff House formations.
5. Set cast iron bridge plug at +/- 5100'.
6. Shoot 1 squeeze hole at +/- 4750'. Set cement retainer at +/- 4730'.
7. Squeeze 150 sxs of type III (1.39 yield, 14.5 ppg) cement below retainer.
8. Shoot 1 squeeze hole at +/- 4470'. Set cement retainer at +/- 4440'.
9. Squeeze 150 sxs of type III (1.39 yield, 14.5 ppg) cement below retainer. WOC.
10. Mill out retainer and cement to 4730'.
11. Perforate and fracture stimulate the Lewis formation.
12. Flow back well. Mill out cement retainer, cast iron bridge plug, frac plug and cast iron bridge plug over Dakota.
13. Clean out as required.
14. Land tubing. RDMO rig.
15. Return well to production as a commingled DK/MV producer.

MV N/3820

San Juan 28-5 Unit #84

1700' FNL , 1650' FEL
Unit G, Section 16, T28N, R05W
Rio Arriba County, NM

LAT:

LONG:

GL = 6,582'

KB= 0,000'

Current Wellbore Diagram

Surface Casing:

9-5/8" 32.3# H-40
Set @ 242'
TOC @ circ to surf
240 sx, circ to surf

Intermediate Casing:

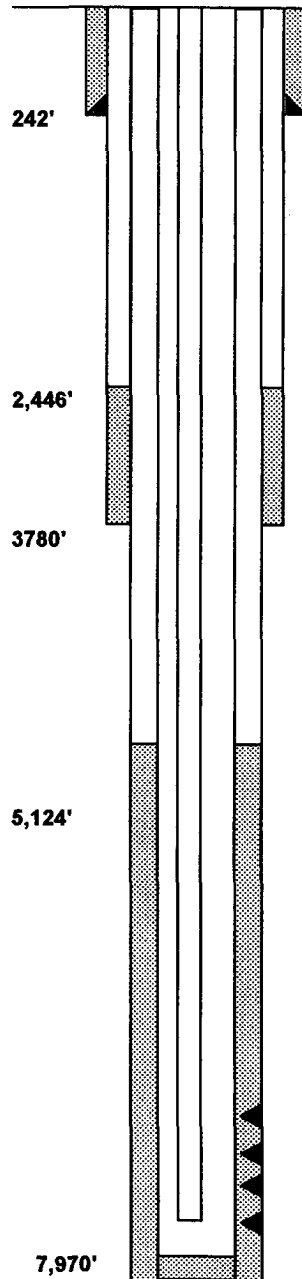
7" 20# K-55
Set @ 3,780'
TOC @ 2,446'
170 sx

Tubing:

1-1/2" 2.9# J-55
Set @ 7918

Production Casing:

4-1/2" 10.5, 11.6# KSSE, JE
Set @ 7,970'
TOC @ 5,124'



Ojo Alamo
Kirtland
Fruitland
Pictured Cliffs
Heur Bent.
Chacra
Mesa Verde 5286
Point Lookout 5659
Mancos 6280
Gallup 6424
Greenhorn 7616
Graneros 7673
Two Wells 7788

Existing Stimulation:

Dakota
7808' - 7930'
50,000# 40/60, 52,000 gal SW

PBTD= 7,961'
TD= 7,970'

District I

1625 N. French Dr., Hobbs, NM 88240

District II

1301 W. Grand Ave., Artesia, NM 88210

District III

1000 Rio Brazos Rd., Aztec, NM 87410

District IV1220 S. St Francis Dr., Santa Fe, NM
87505

State of New Mexico
Energy, Minerals and Natural Resources
Oil Conservation Division
1220 S. St Francis Dr.
Santa Fe, NM 87505

Form C-102

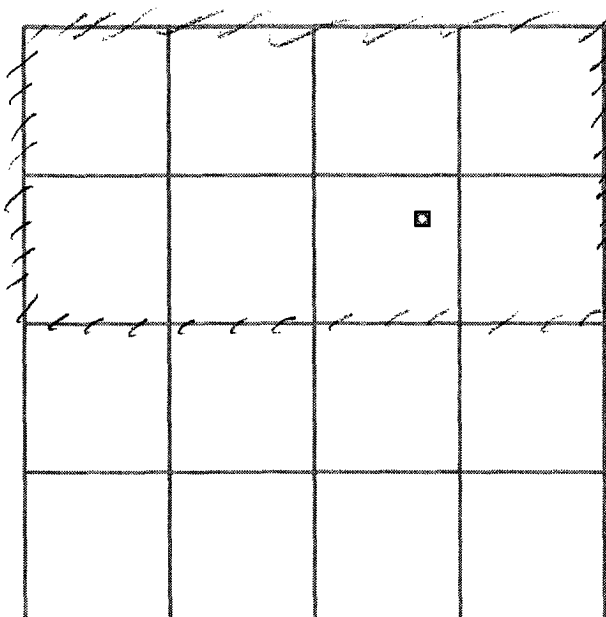
Permit 8629

WELL LOCATION AND ACREAGE DEDICATION PLAT

API Number	Pool Name BLANCO-MESAVERDE (PRORATED GAS)	Pool Code 72319
Property Code 7460	Property Name SAN JUAN 28 5 UNIT	Well No. 084
OGRID No. 14538	Operator Name BURLINGTON RESOURCES OIL & GAS CO	Elevation 6582

Surface And Bottom Hole Location

UL or Lot G	Section 16	Township 28N	Range 05W	Lot Idn	Feet From 1700	N/S Line N	Feet From 1650	E/W Line E	County Rio Arriba
Dedicated Acres 320	Joint or Infill	Consolidation Code	Order No.						

**OPERATOR CERTIFICATION**

I hereby certify that the information contained herein is true and complete to the best of my knowledge and belief.

Electronically Signed By:

Title: *Regulatory Associate*

Date:

*3/21/05***SURVEYOR CERTIFICATION**

I hereby certify that the well location shown on this plat was plotted from field notes of actual surveys made by me or under my supervision, and that the same is true and correct to the best of my belief.

Surveyed By: David Vilven

Date of Survey: 03/19/1971

Certificate Number: 1760