

UNITED STATES
DEPARTMENT OF THE INTERIOR
BUREAU OF LAND MANAGEMENT

SUNDRY NOTICES AND REPORTS ON WELLS

Do not use this form for proposals to drill or to deepen or reentry to a different reservoir.
Use "APPLICATION FOR PERMIT..." for such proposals

SUBMIT IN TRIPLICATE

1. Type of Well

☐ Oil ☒ Gas ☐ Other

2. Name of Operator

Roddy Production Company, Inc.

3. Address and Telephone No.

P.O. Box 2221, Farmington NM 87499 (505) 325-5750

4. Location of Well (Footage, Sec., T., R., M., or Survey Description)

Surface location; 1116' FNL x 1366' FEL, Section 21, T28N R11W

FORM APPROVED
Budget Bureau No. 1004-0135
Expires: March 31, 1993

5. Lease Designation and Serial No.

NM10063 010063

6. If Indian, Allottee or Tribe Name

N/A

7. If Unit or CA, Agreement Designation

8. Well Name and No.

Lucerne Federal 11

9. API Well No.

30-045-32856

10. Field and Pool, or Exploratory Area

W. Kutz Pictured Cliffs/Fruitland Coal

11. County or Parish, State

San Juan County, New Mexico

12. CHECK APPROPRIATE BOX(s) TO INDICATE NATURE OF NOTICE, REPORT, OR OTHER DATA

TYPE OF SUBMISSION

☐ Notice of Intent

☒ Subsequent Report

☐ Final Abandonment Notice

TYPE OF ACTION

☐ Abandonment

☐ Recompletion

☐ Plugging Back

☐ Casing Repair

☐ Altering Casing

☒ Other Completion Operations

☐ Change of Plans

☐ New Construction

☐ Non-Routine Fracturing

☐ Water Shut-Off

☐ Conversion to Injection

☐ Dispose Water

(Note: Report results of multiple completion on Well Completion or Recompletion Report and Log form.)

13. Describe Proposed or Completed Operations (Clearly state all pertinent details, and give pertinent dates, including estimated date of starting any proposed work. If well is directionally drilled, give subsurface locations and measured and true vertical depth for all markers and zones pertinent to this work.)*

Roddy Production has isolated the Pictured Cliffs zone with a bridge plug. The Fruitland Coal has been completed. Co-mingling will occur at a later date, after the pipeline has been constructed and the Fruitland Coal has established a stable production curve for allocation purposes. The completion reports and well bore diagram are attached.

14. I hereby certify that the foregoing is true and correct

Signed Robert R. Griffie
Robert R. Griffie

Title Operations Manager
agent for Roddy Production

Date: 6/23/05

(This space for Federal or State office use)

Approved by _____

Title _____

Conditions of approval, if any:

ACCEPTED FOR RECORD

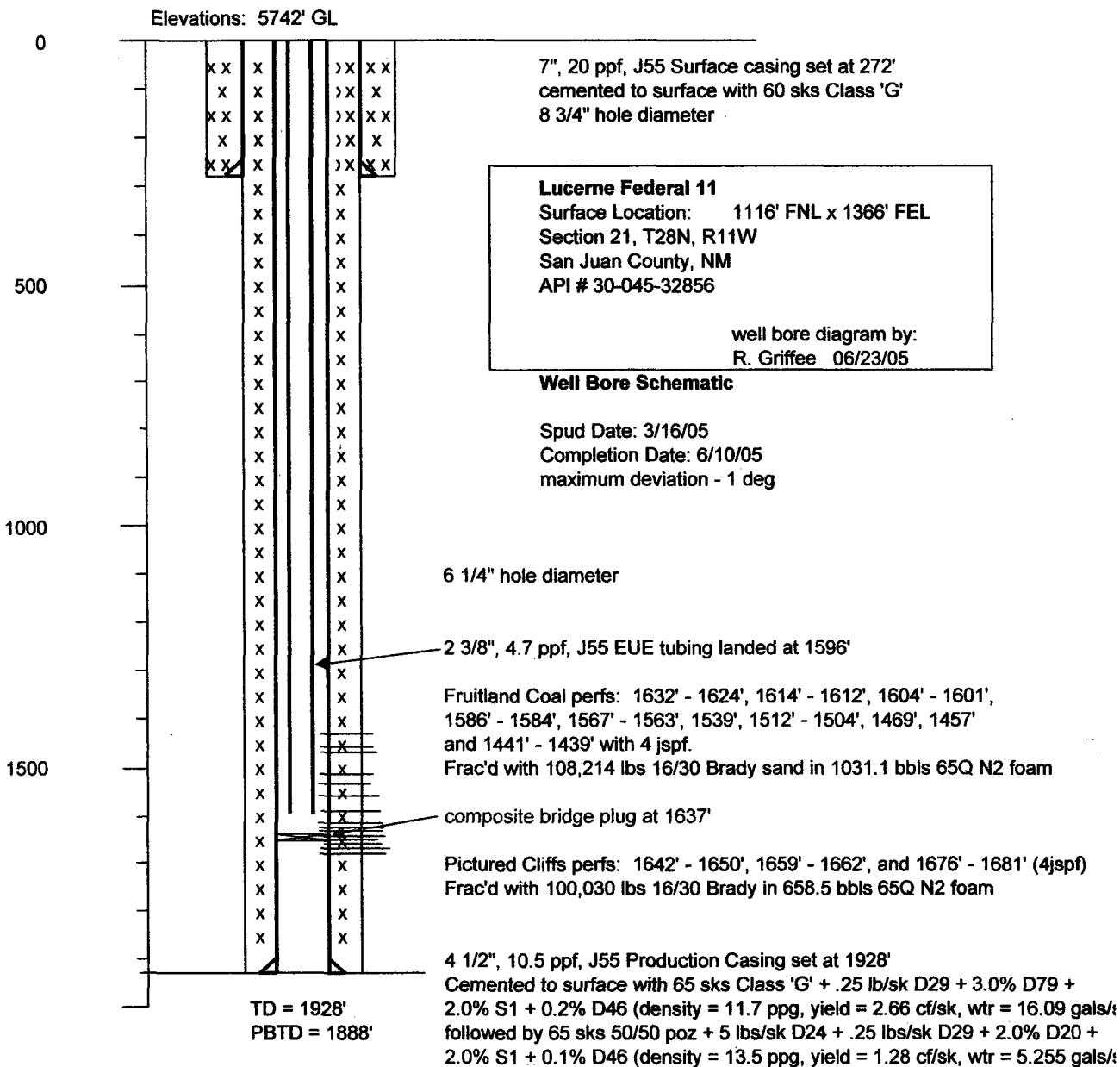
Date JUN 29 2005

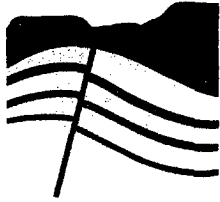
FARMINGTON FIELD OFFICE
BY db

Title 18 U.S.C. Section 1001, makes it a crime for any person knowingly and willfully to make to any department or agency of the United States any false, fictitious or fraudulent statements or representations as to any matter within its jurisdiction.

*See Instruction on Reverse Side

NMOC





DJ SIMMONS, INC.

1009 Ridgeway Place
Suite 200
Farmington,
New Mexico 87401

505-326-3753
505-327-4659 FAX
info@dj-simmons-inc.com
www.dj-simmons-inc.com

**Roddy Production Co.
Lucerne Federal #11**

Completion Reports

4/13/05

MIRU. PU 2 3/8" tubing and scraper, SLM. TIH and tag at 1892'. TOH. Secure well, SDFN.

4/14/05

Travel to location, SICP - 0 psi. Pressure test casing to 3000 psi, good test. RU Blue Jet. Run CBL to surface. TIH open ended to 1685'. RU Schlumberger and spot 250 gal 7 1/2% HCL. TOH and L/D 59 jts of tubing. RU Blue Jet. Perforate as follows: 1642' - 1650', 1659' - 1662', and 1676' - 1681', with 4 jspf. RD Blue Jet. RDMO Pro # 2, move to Lucerne 8.

4/16/05

MIRU Stinger and Schlumberger for rigless frac. Hold safety meeting. Frac with 110,000 lbs of 16/30 Brady sand in 65Q N2 foam. ISIP - 1040 psi. RD Schlumberger and Stinger and move frac equipment to Lucerne # 8. RU well to flow to tank. Open well on 1/8" choke at 600 psi. Flow back overnight.

4/17/05

Flow back well on 1/8" choke. 9:00 p.m. - 280 psi. 11 bbls frac fluid, 8:00a.m. - 95 psi recovered a total of 21 bbls. 12:00 p.m. - 50 psi, well not making fluid. 3:00 p.m. - 0 psi. Shut in well.

4/28/05

MIRU, Pro Well Service Rig 2, air package, and flow back tank. PU, SLM, and TIH with 2 3/8", J55, tubing. Tag fill at 1840'. Clean out with air, 3-4 bbls mist, and sweeps. Recovered heavy amount of sand. Dry up well. Pull up above perforations. Secure well, SDFN.

4/29/05

Travel to location, SICP - 65 psi. TIH tag 8' fill clean out with air, mist 3-4 bbls, sweeps, dry up pull up and flow well 2 hrs made 8 bbls. Tag no fill. TOH above perforations. Secure well. SDFN. Total 50 bbls recovered. Rig crew repair unit.

5/2/05

Rig # 2 Was replaced with Rig # 6 over the weekend. Travel to location, SICP - 85 psi, SITP - 65 psi. Flow well 1 hr, made some fluid. TIH and tag 2' fill. Clean out with air, 2-3 bbls mist, at low volume. Dry up well with air. Pull up above perforations and flow natural 1 ½ hr. making 3 bbls. TIH and tag 1' fill. Clean out fill, dry up well. TOH 5 std. Secure well SDFN. Recovered 17 bbls total.

5/3/05

Travel to location. SICP 85 psi, SITP 80 psi. TIH tag no fill, unload well with air only made 1-2 bbls. Land 2 3/8" J-55, 8r at 1675' with 5' KB. RDMO.

5/20/05

MIRU Pro Well Service. ND well head, NU BOPE. Secure Well, SDFN.

5/23/05

Travel to location. SICP - 40 psi. Bleed well down. TIH and tag 1' fill. Lay down tag jts. TOH, SLM. W.O.O. Could not get acid crew until the a.m. Secure well, SDFN. Will perforate, spot acid, tomorrow morning, then RDMO to the Yockey 4r.

5/24/05

Travel to location. SCIP - 40 psi. RU Blue Jet. Set wireline-set composite bridge plug at 1637'. Fill casing with water and pressure test to 3000 psi. Companion flange leaked. Attempt to tighten, and re-test, did not test. ND BOPE, replace flange. Pressure test to 3000 psi, good test. TIH to 1637'. RU Schlumberger, and spot 250 gals of 7 ½ % HCL. TOH and lay down Tbg on float. Perforate with 4 jspf, as follows 1632'-1624', 1614'- 1612', 1604' - 1601', 1586'- 1584', 1567' - 1563', 1539', 1512' -1504', 1457', 1441' - 1439', 1469'. RD Blue Jet. RDMO Pro Well Service. Move to Yockey 4r. Secure well, SDFN. Note: Pro Well Service blocks fell slowly, and pinched 1300' of Blue Jet's wireline 1300'. PWS well pay for wireline (\$2,211.68)

5/30/05

Frac Day Rigless

MIRU, Stinger and Schlumberger. Hold safety meeting. Frac with 2,000 gals 15 % HCL followed with 110,000 lbs 16/30 Brady sand in 65 Q N2 foam. ISIP 1050 psi RD. Flow Back well overnight.

5/31/05

on 5/30/05, Frac day, ISIP - 1100 psi. Open at 12:00 p.m. on 1/8" choke - 980 psi, 3:00 p.m. - 300 psi w/ heavy N2, fluid, and propnet. 6:00 p.m. - 195 psi, 8:00 p.m. - 200 psi, 12:00 a.m. - 75 psi, 12:30 a.m. - 50 psi, change out choke to 1/4", open with 169 psi, 4:00 a.m. - 10 psi. Shut in 1 hr. Open with 120 psi. At 5:30 a.m. - 0 psi. Shut in, and secure well. 5/31/05 at 11: a.m. - 300 psi, open on 3/8" choke. Bled down in 1 1/2 hr, shut in and repeat to 9:00 p.m. Shut in and secure well with 20 psi..

6/1/05

11:00 a.m. shut in pressure - 300 psi. Open on 3/8". Bleed down in 1 1/2 hrs. Shut in and repeat to 9:00 p.m. At 9:00 p.m. shut in pressure was 75 psi. Shut in and secure well.

6/7/05

MIRU. SICP -160 psi, bleed well down. ND frac valve, NU BOPE. PU 2 3/8" tubing with notched collar, RIH and tag fill at 1623', composite bridge plug at 1630'. TOH w/ 5 stds, secure well, SDFN. Note: It was going to take too long to move in air package, let rig crew go for the day. Speedy Trucking pulled down overhead line, it was reported and repaired by PNM.

6/8/05

SICP - 150 psi, bleed down. TIH - 14' fill. Unload fluid with air and clean out with 1 bbl mist, and 2-3 bbl sweeps. Pump 1 gal of foam, push it into formation for 10 min at 320 psi. Well unloaded with very low volume. Dry up and POOH 3 stds. Recovered 25 bbls of frac fluid, and frac sand. Secure well, SDFN.

6/9/05

SICP - 125 psi. TIH, no fill. Unload frac fluid with low volume burst of air. Recovered 40 bbls. Making gas. Stand back 3 stds, secure well and SDFN. Will RDMO to Lucerne Fed # 8 in the a.m.

6/10/05

SICP - 115 psi. TIH, no fill, unload fluid with air, recovered 11 bbls. Land tbg at 1596' rkb of 5'. Composite plug at 1637', perforations at 1632' - 1439'. RDMO. Secure well.