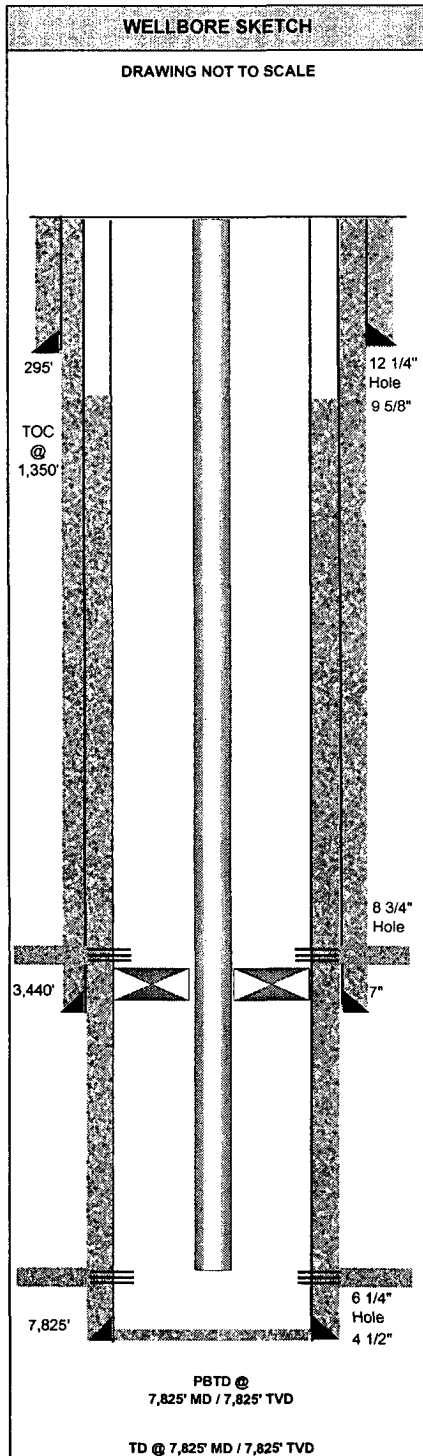


devon	OPERATOR: Devon Energy Prod. Co.	LEASE / WELL: NEBU 335	SURFACE LOCATION: 1,545' FNL & 720' FEL	BOTTOM HOLE LOCATION: SAME
	DRILLING RIG: Drake 28/28 COMPLETION RIG:	COUNTY / STATE: Rio Arriba, NM	AFE #: 110516 PROPERTY #: 015585-010	API#: 30-039-27808 SPUD DATE: 11/16/2004

WELL DATA			
DIRECTIONAL	STRAIGHT		
KOP:	TVD		
BEGIN BUILD	deg @	MD	
BEGIN HOLD	deg @	MD	
BEGIN DROP	deg @	MD	
BEGIN VERTICAL	deg @	MD	

TUBULAR DATA							
Tubulars	Size	Weight	Grade	Thread	MD	TVD	TOL
CONDUCTOR							
SURFACE	9 5/8"	32.3#	H-40	ST&C	295'		
INTERMEDIATE	7"	23#	J-55	LT&C	3,435'		
PRODUCTION	4 1/2"	11.6#	J-55	LT&C	7,821'		
PROD TIEBACK							
PROD LINER							
TUBING	2 3/8"				7,753'		

WELLHEAD DATA	
ELEVATIONS:	GROUND ELEVATION
RKB-THF:	6,288'
RKB-ELEV:	
FIELD:	
San Juan	



EQUIPMENT DESCRIPTION	DEPTH TVD	DEPTH MD
CEMENT DETAILS:		
9 5/8" Casing cemented with 175 sx (37 bbls) "B" cement w/2% CaC1 and 1/4# PSX Floeal.		
Circulated 10 bbls of cement to surface.		
7" Casing cemented with 500 sx (129 bbls) 50/50 POZ w/2% Gel, 0.2% Versaset, 0.1% Diacel LWL and tail w/75 sx (19 bbls) 50/50 POZ w/2% Gel, 0.2% Versaset, 0.1% Diacel LWL. Circulated 30 bbls of cement to surface.		
4 1/2" Casing Cemented with 250 sx (65 bbls) 50/50 POZ w/2% Gel, 2/10% Versaset, 1/10% Diacel LWL and tail w/450 sx (118 bbls) 50/50 POZ, 3% Gel, 1.4% Halad 9, 1/10% CGR3-5, 5# Gilsontite & 1/4# Flocele. No cement to surface, TOC @ 1,350'.		
Tubing Details		
Landing Donut		
106 jts 2 3/8 Tubing		
Weatherford R3 Production Packer	3,357'	
137 jts 2 3/8" Tubing		
2 3/8" F Nipple	7,690'	
2 jts 2 3/8" Tubing		
2 3/8" In string expendable check valve	7,752'	
2 3/8" Notched collar	7,753'	
Packer and tubing were run into hole on 12/9/04 between 1:45 pm and 4:30 p		
P C Perforations 3310-11', 3268-69', 3254-55', 3242-43', 3227-28'		
Frac'd w/55,675 gals Delta 200 w/130,500# 20/40 Brady. Sand ramped 1.0 - 3.0 ppg. Avg rate 20.7 BPM, Avg pressure 1965 psi (max 2577 psi). F. G. = 0.70 psi/ft		
Dakota Perforations 7808-09, 7783-84', 7762-63', 7750-52', 7706-08'		
Frac'd w/68,181 gals Delta 200 w/75,600# 20/40 Ottawa. Sand ramped 0.5 - 3.0 ppg. Avg rate 20.5 BPM, Avg pressure 3079 psi (max 4077 psi). F. G. = 0.83 psi/ft.		
COMMENTS:	Working Interest: 20.40%	PLUG BACK DEPTH: 7,825'
	Net Revenue Interest 0.00%	TOTAL WELL DEPTH: 7,825'
PREPARED OR REVISED BY: Melissa Zimmerman		DATE: January 12, 2005
Completed in Pictured Cliffs		

CURRENT

DIRECTIONS TO LOCATION: From Bloomfield, NM; travel 37.4 miles east on US Hwy 64. Turn left on State Hwy 527 traveling 7.91 miles. Turn right on Rosa Rd and travel 6.8 miles. Turn left and travel 7.0 miles to location.