

UNITED STATES
DEPARTMENT OF THE INTERIOR
BUREAU OF LAND MANAGEMENTFORM APPROVED
OMB NO. 1004-0137
Expires March 31, 2007

SUNDRY NOTICES AND REPORTS ON WELLS

Do not use this form for proposals to drill or to re-enter an abandoned well. Use Form 3160-3 (APD) for such proposals.

SUBMIT IN TRIPLICATE - Other instructions on reverse side

1. Type of Well <input type="checkbox"/> Oil Well <input checked="" type="checkbox"/> Gas Well <input type="checkbox"/> Other		5. Lease Serial No. NMSF077383
2. Name of Operator XTO Energy Inc.		6. If Indian, Allottee or Tribe Name
3a. Address 2700 Farmington Ave., Bldg. K, Ste 1 Farmington,	3b. Phone No. (include area code) 505-324-1090	7. If Unit or CA/Agreement, Name and/or No.
4. Location of Well (Footage, Sec., T., R., M., or Survey Description) 1,975' FSL & 1,980' FWL SEC. K27, T28N, R10W		8. Well Name and No. FEDERAL GAS COM #4
		9. API/Well No. 30-045-32710
		10. Field and Pool, or Exploratory Area Basin Dakota/ Blanco Mesaverde/Otero Chacra
		11. County or Parish, State SAN JUAN NM

12. CHECK APPROPRIATE BOX(ES) TO INDICATE NATURE OF NOTICE, REPORT, OR OTHER DATA

TYPE OF SUBMISSION

- ☒ Notice of Intent
☐ Subsequent Report
☐ Final Abandonment Notice

TYPE OF ACTION

- | | | | |
|---|---|--|--|
| <input type="checkbox"/> Acidize | <input type="checkbox"/> Deepen | <input type="checkbox"/> Production (Start/Resume) | <input type="checkbox"/> Water Shut-Off |
| <input type="checkbox"/> Alter Casing | <input type="checkbox"/> Fracture Treat | <input type="checkbox"/> Reclamation | <input type="checkbox"/> Well Integrity |
| <input type="checkbox"/> Casing Repair | <input type="checkbox"/> New Construction | <input type="checkbox"/> Recomplete | <input checked="" type="checkbox"/> Other TA Dakota |
| <input type="checkbox"/> Change Plans | <input type="checkbox"/> Plug and Abandon | <input type="checkbox"/> Temporarily Abandon | Interval & Recomp |
| <input type="checkbox"/> Convert to Injection | <input type="checkbox"/> Plug Back | <input type="checkbox"/> Water Disposal | Interval |

13. Describe Proposed or Completed Operation (clearly state all pertinent details, including estimated starting date of any proposed work and approximate duration thereof. If the proposal is to deepen directionally or recompleat horizontally, give subsurface locations and measured and true vertical depths of all pertinent markers and zones. Attach the Bond under which the work will be performed or provide the Bond No. on file with BLM/BIA. Required subsequent reports shall be filed within 30 days following completion of the involved operations. If the operation results in a multiple completion or recompleat in a new interval, a Form 3160-4 shall be filed once testing has been completed. Final Abandonment Notices shall be filed only after all requirements, including reclamation, have been completed, and the operator has determined that the final site is ready for final inspection.)

XTO Energy, Inc. requests approval to temporarily abandon the Basin Dakota and recompleat the Blanco Mesaverde. Pending commercial results of MV testing, the zone will be based on the one month flow tests of each zone. If interval is not commercial, the MV perfs will be squeezed w/cement & XTO will DHC the Dakota and Chacra as approved by DHC-1877AZ. Procedure for completion of the Mesaverde is attached.

CONDITIONS OF APPROVAL
Adhere to previously issued stipulations.

SEE ATTACHED FOR
CONDITIONS OF APPROVAL

RECEIVED
JUN 15 PM 12 18
BUREAU OF LAND MANAGEMENT
2700 FARMINGTON AVE
FARMINGTON, NM 87401

14. I hereby certify that the foregoing is true and correct
Name (Printed/Typed)

HOLLY C. PERKINS

Title

REGULATORY COMPLIANCE TECHDate **6/10/2005**

THIS SPACE FOR FEDERAL OR STATE OFFICE USE

Approved by

Title

Date

Conditions of approval, if any, are attached. Approval of this notice does not warrant or certify that the applicant holds legal or equitable title to those rights in the subject lease which would entitle the applicant to conduct operations thereon.

Office

Title 18 U.S.C. Section 1001 and Title 43 U.S.C. Section 1212, makes it a crime for any person knowingly and willfully to make to any department or agency of the United States any false, fictitious or fraudulent statements or representations as to any matter within its jurisdiction.

NMOCB

Completion Procedure

1. MI & set 4 – 400 bbl clean frac tanks. Fill tanks w/ 2% KCL water. **Do not use produced water for this fracture treatment.** Set 1 flowback tank. Note: Have Halliburton test wtr for compatibility prior to frac and add biocide to all the tanks. Heat water in the frac tanks so wtr temperature @ frac time is +/- 80° F. Ensure hot oil trucks are clean to avoid contaminating the tanks when heating.
2. MIRU PU. Blow down and kill well as necessary. ND tree and NU BOP. TOH and LD 202 jts 2-3/8", 4.7#, J-55, EUE, 8RD tubing, SN, & NC.
3. MIRU WL trk. Run 5-1/2" gauge ring to 4,600'. Set 5-1/2" CIBP at 4,600'. Load and pressure test well w/ 2% KCL to 3,850 psi for 5 minutes.
4. Run CCL 4,600' up to 2,200' (Marker joint from 2,784' – 2,502' drillers measurement). Correlate CCL w/Schlumberger Platform Express Triple Combo log dated 04/20/05 and Schlumberger GR/CCL dated 05/06/05.
5. Perf Point Lookout w/3-1/8" csg gun fr/4,518' – 4,522' w/3 JSPF (Owen HSC-3125-302, 10 gm charges, 0.34" dia holes, 21.42" penetration, 120° phasing, 15 holes). POH w/csg gun.

Lower Point Lookout Perfs

Perforation Interval	CCL
4,518' – 4,522'	

6. **LOWER POINT LOOKOUT FRAC:** MIRU frac valve & frac equip. Test lines to 4,850 psig. Frac Point Lookout perfs 4,518' – 4,522' dwn 5-1/2" csg @ 20 BPM 43,750 gals of 17# Delta 140 XL gelled 2% KCL water carrying 68,750# 20/40 Ottawa. Run Expedite for the last 31,250# sand during 2.5 ppg stage. Do not exceed 3,850 psig and do not exceed 20 BPM. Flush w/4,392 gallons (3 bbl underflush). Isolate blender during flush. Record ISIP, 5", 10" & 15" SIP's.

POINT LOOKOUT SCHEDULE

Clean Volume Gals)	Rate (BPM)	Sd Conc (ppg)	Total Sand (lbs)	Comments
500	20	0	0	Pre-pad
6,250	20	0	0	Pad
12,500	20	1.0	12,500	20/40 Ottawa
12,500	20	2.0	25,000	20/40 Ottawa
12,500	20	2.5	31,250	20/40 Ottawa w/ Expedite
4,392	10	0	0	Flush – Linear Gel

Note: Do not overflush.

7. SWI 1 hr and record SICP. RD frac lines. MIRU WL trk. RIH w/5-1/2" flow-through BP & set @ $\pm 4,300'$ (do not set in a casing collar). POH w/WL. Press tst CIBP to 1,500 psig over SICP for 10". Rel press. RIH & perf w/3-1/8" select fire csg gun fr/4,249' – 4,253' w/3 JSPF (Owen HSC-3125-302, 10 gm charges, 0.34" dia holes, 21.42" penetration, 120° phasing, 15 holes). POH w/csg gun. RDMO WL.

Upper Point Lookout Perfs

Perforation Interval	CCL
4,249' – 4,253'	

8. **UPPER POINT LOOKOUT FRAC:** RU frac lines and test to 4,850 psig. Frac Upper Point Lookout perfs 4,249' – 4,253' dwn 5-1/2" csg @ 20 BPM 43,750 gals of 17# Delta 140 XL gelled 2% KCL water carrying 68,750# 20/40 Ottawa. Run Expedite for the last 31,250# sand during 2.5 ppg stage. Do not exceed 3,850 psig and do not exceed 20 BPM. Flush w/4,123 gallons (3 bbl underflush). Record ISIP, 5", 10" & 15" SIP's.

POINT LOOKOUT SCHEDULE

Clean Volume Gals)	Rate (BPM)	Sd Conc (ppg)	Total Sand (lbs)	Comments
500	20	0	0	Pre-pad
6,250	20	0	0	Pad
12,500	20	1.0	12,500	20/40 Ottawa
12,500	20	2.0	2,5000	20/40 Ottawa
12,500	20	2.5	31,250	20/40 Ottawa w/ Expedite
4,123	10	0	0	Flush – Linear Gel

Note: Do not overflush.

9. SWI for 4 hrs. RDMO frac equipment. Install flow back manifold. OWU on 1/8" choke. Incr ck size (not to exceed 1/2"), pending sd & wtr prod. Flow well back as directed or until ready to run production tubing.
10. MIRU PU. Blow well down and kill as necessary using 2% KCL water. ND wellhead and NU BOP. MIRU AFU. TIH with 4-3/4" bit, 4 - 3-1/2" drill collars and 2-3/8", 4.7#, J-55, EUE, 8rd tubing. CO sd & DO flow-through BP @ $\pm 4,300'$. TIH with BHA & CO sand to temporary PBTD (4,600'). RDMO AFU. POH, LD BHA and excess tbg.
11. TIH with NC, SN, tubing & land @ $\pm 4,515'$. ND BOP. NU WH.
12. Swb well to flowing. Obtain 3 hr flow test. SWI. RDMO PU.
13. Turn well to sales for ± 1 month to establish rates for Mesaverde test and DHC allocation. Report rates and pressures to Farmington office.

14. Pending commercial production from the Mesaverde interval, temporarily plug back and fracture stimulate the Chacra. Flow the Chacra interval for +/- 1 month to establish DHC allocation. If Mesaverde is non-commercial, squeeze off perforations and OAP in Chacra. Note: DHC for DK and CH is already approved. DHC for DK, MV, & CH will need to be obtained in the event the MV is commercial.

DISTRICT I
1825 N. French Dr., Hobbs, N.M. 88240

DISTRICT II
1301 W. Grand Ave., Artesia, N.M. 88210

DISTRICT III
1000 Rio Brazos Rd., Aztec, N.M. 87410

DISTRICT IV
1220 South St. Francis Dr., Santa Fe, NM 87505

State of New Mexico
Energy, Minerals & Natural Resources Department

OIL CONSERVATION DIVISION

1220 South St. Francis Dr.
Santa Fe, NM 87505

Form C-102

Revised June 10, 2003

Submit to Appropriate District Office

State Lease - 4 Copies

Fee Lease - 3 Copies

☐ AMENDED REPORT

WELL LOCATION AND ACREAGE DEDICATION PLAT

¹ API Number	² Port Code 72319	³ Well Name BLANCO MESAVERDE
⁴ Property Code	⁵ Property Name FEDERAL GAS OOM	⁶ Well Number 4
⁷ OGRID No. 167067	⁸ Operator Name XTO ENERGY INC.	⁹ Elevation 5886'

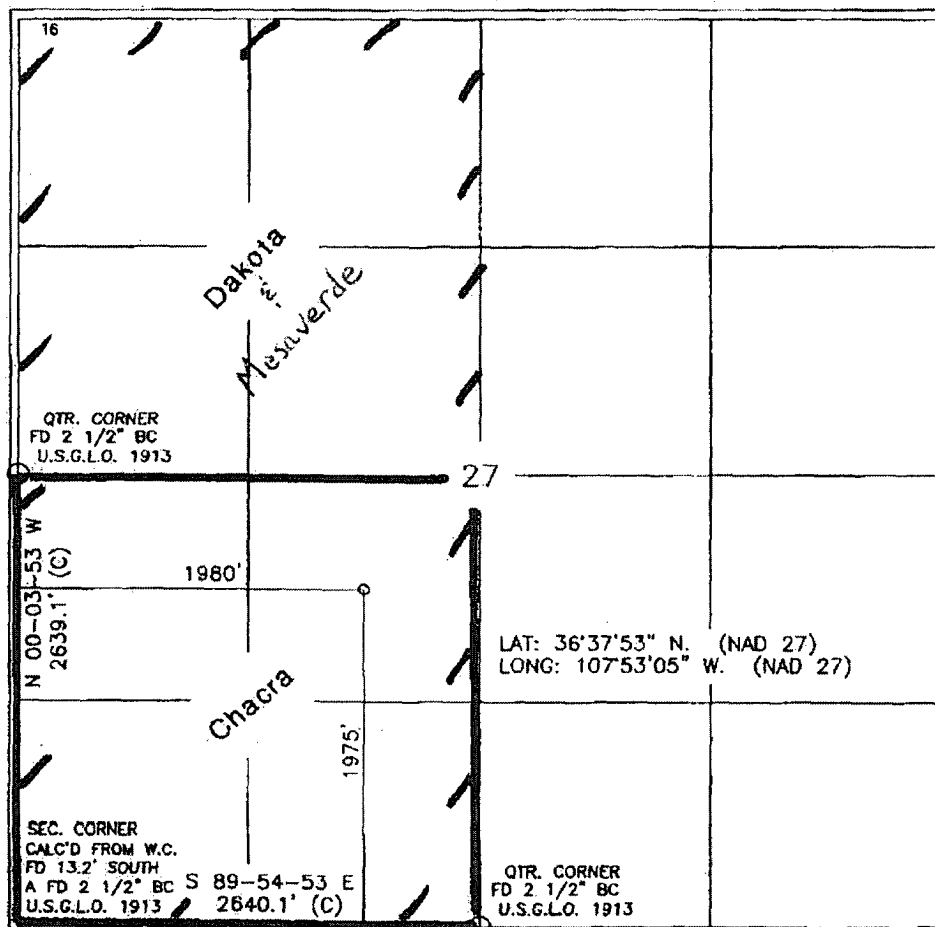
¹⁰ Surface Location

UL or lot no.	Section	Township	Range	Lot Idn	Feet from the	North/South line	Feet from the	East/West line	County
K	27	28-N	10-W		1975	SOUTH	1980	WEST	SAN JUAN

¹¹ Bottom Hole Location If Different From Surface

UL or lot no.	Section	Township	Range	Lot Idn	Feet from the	North/South line	Feet from the	East/West line	County
¹² Dedicated Acres 160 (CH) & 320 (DK)					¹³ Joint or Infill		¹⁴ Consolidation Code		¹⁵ Order No.

NO ALLOWABLE WILL BE ASSIGNED TO THIS COMPLETION UNTIL ALL INTERESTS HAVE BEEN CONSOLIDATED
OR A NON-STANDARD UNIT HAS BEEN APPROVED BY THE DIVISION



¹⁷ OPERATOR CERTIFICATION

I hereby certify that the information contained herein
is true and complete to the best of my knowledge and
belief

Holly C. Perkins
Signature
HOLLY C. PERKINS
Printed Name
REGULATORY COMPLIANCE
Title
TECH
Date
4-29-05

¹⁸ SURVEYOR CERTIFICATION

I hereby certify that the well location shown on this plat
was plotted from field notes of actual surveys made by
me or under my supervision, and that the same is true
and correct to the best of my knowledge and belief

Date of Survey
Signature
Professional Surveyor
14831
Certificate Number

Bureau of Land Management Conditions of Approval:

- 1) If cement squeeze work is necessary, contact Matt Halbert of the BLM Farmington Field Office @ (505) 599-6350.**
- 2) If this well is located in a Specially Designated Area (SDA), compliance with the appropriate seasonal closure requirements will be necessary.**
- 3) Pits must be lined with an impervious material at least 12 mils thick. The pit must be fenced on three (3) sides during workover operations and on the 4th side after the rig moves off location. Pits must be closed within 90 days of completion of the workover operations. Prior to closing the pit the liner must be cut off at mud level.**