

RECEIVED

MAY 19 2005

Form 3160-3
(September 2001)

Bureau of Land Management
Durango, Colorado

FORM APPROVED
OMB No. 1004-0136
Expires January 31, 2004

UNITED STATES
DEPARTMENT OF THE INTERIOR
BUREAU OF LAND MANAGEMENT

APPLICATION FOR PERMIT TO DRILL OR REENTER

1a. Type of Work: <input checked="" type="checkbox"/> DRILL <input type="checkbox"/> REENTER		5. Lease Serial No. I-22-IND-2722
1b. Type of Well: <input type="checkbox"/> Oil Well <input checked="" type="checkbox"/> Gas Well <input type="checkbox"/> Other <input type="checkbox"/> Single Zone <input type="checkbox"/> Multiple Zone		6. If Indian, Allottee or Tribe Name Ute Mountain Ute
2. Name of Operator Burlington Resources		7. If Unit or CA Agreement, Name and No.
3a. Address 3401 E. 30th St. Farmington, NM 87402		8. Lease Name and Well No. Ute Mountain Ute #73
3b. Phone No. (include area code) (505) 326-9700		9. API Well No. 30-045-33302
4. Location of Well (Report location clearly and in accordance with any State requirements.) At surface SWNW Lot E 1410' FNL & 845' FWL At proposed prod. zone		10. Field and Pool, or Exploratory Basin Dakota
11. Sec., T., R., M., or Blk. and Survey or Area E Sec 23-32N-14W NMPM		12. County or Parish San Juan
13. State NM		14. Distance in miles and direction from nearest town or post office* 5 miles from La Plata
15. Distance from proposed* location to nearest property or lease line, ft. (Also to nearest drig. unit line, if any) 845'	16. No. of Acres in lease 8,400	17. Spacing Unit dedicated to this well 10 acres 320 W/2
18. Distance from proposed location* to nearest well, drilling, completed, applied for, on this lease, ft. 2175.7	19. Proposed Depth 3,000	20. BLM/BIA Bond No. on file
21. Elevations (Show whether DF, KDB, RT, GL, etc.) 6239' GR	22. Approximate date work will start*	23. Estimated duration

Venting / Flaring approved for 60 days
per NTL-4A

24. Attachments

SEE ATTACHED
CONDITIONS OF APPROVAL

The following, completed in accordance with the requirements of Onshore Oil and Gas Order No.1, shall be attached to this form:

- Well plat certified by a registered surveyor.
- A Drilling Plan.
- A Surface Use Plan (if the location is on National Forest System Lands, the SUPO shall be filed with the appropriate Forest Service Office).
- Bond to cover the operations unless covered by an existing bond on file (see Item 20 above).
- Operator certification.
- Such other site specific information and/or plans as may be required by the authorized officer.

25. Signature <i>Catherine Smith</i>	Name (Printed/Typed) Catherine Smith	Date 5/5/05
Title Agent for Burlington Resources		APPROVED FOR A PERIOD NOT TO EXCEED 1 YEAR. AUG 19 2005
Approved by (Signature) <i>/s/ Brian W. Davis</i>	Name (Printed/Typed) Brian W. Davis	
Title Asst. Field Office Manager		Office

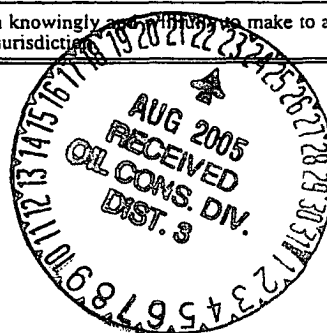
Application approval does not warrant or certify the the applicant holds legal or equitable title to those rights in the subject lease which would entitle the applicant to conduct operations thereon.

Conditions of approval, if any, are attached.

Title 18 U.S.C. Section 1001 and Title 43 U.S.C. Section 1212, make it a crime for any person knowingly and willfully to make to any department or agency of the United States any false, fictitious or fraudulent statements or representations as to any matter within its jurisdiction.

*(Instructions on reverse)

Approval of this agreement does not warrant or certify that the operator thereof and other holders of operating rights hold legal or equitable title to those rights in the subject lease which are committed hereto...



MAOCD

DISTRICT I
1625 N. French Dr., Hobbs, N.M. 88240

DISTRICT II
1301 W. Grand Ave., Artesia, N.M. 88210

DISTRICT III
1000 Rio Brazos Rd., Aztec, N.M. 87410

DISTRICT IV
1220 South St. Francis Dr., Santa Fe, NM 87505

State of New Mexico
Energy, Minerals & Natural Resources Department

OIL CONSERVATION DIVISION

1220 South St. Francis Dr.
Santa Fe, NM 87505

Form C-102
Revised June 10, 2003

Submit to Appropriate District Office
State Lease - 4 Copies
Fee Lease - 3 Copies

☐ AMENDED REPORT

WELL LOCATION AND ACREAGE DEDICATION PLAT

¹ API Number 30-045-33302	² Pool Code 71599	³ Pool Name Basin Dakota
⁴ Property Code 32660 18725	⁵ Property Name UTE MOUNTAIN UTE	⁶ Well Number 73
⁷ OGRID No. 14538	⁸ Operator Name BURLINGTON RESOURCES OIL & GAS COMPANY LP	⁹ Elevation 6239

¹⁰ Surface Location

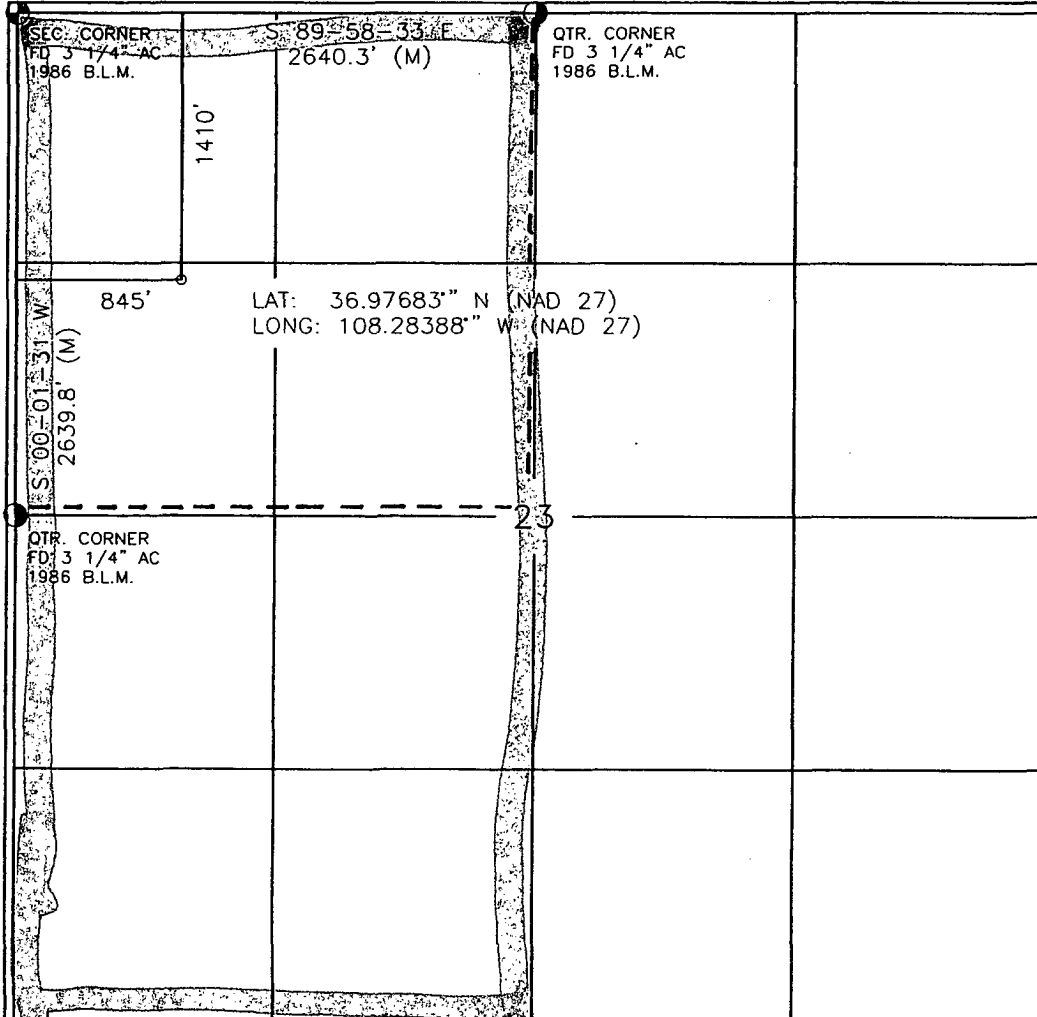
UL or lot no.	Section	Township	Range	Lot 1dn	Feet from the	North/South line	Feet from the	East/West line	County
E	23	32-N	14-W		1410	NORTH	845	WEST	SAN JUAN

¹¹ Bottom Hole Location If Different From Surface

UL or lot no.	Section	Township	Range	Lot 1dn	Feet from the	North/South line	Feet from the	East/West line	County
¹² Dedicated Acres 320			¹³ Joint or Infill		¹⁴ Consolidation Code		¹⁵ Order No.		

NO ALLOWABLE WILL BE ASSIGNED TO THIS COMPLETION UNTIL ALL INTERESTS HAVE BEEN CONSOLIDATED
OR A NON-STANDARD UNIT HAS BEEN APPROVED BY THE DIVISION

16



17 OPERATOR CERTIFICATION

I hereby certify that the information contained herein
is true and complete to the best of my knowledge and
belief.

Catherine Smith
Signature

Catherine Smith

Printed Name

Agent for Burlington Res.

Title

4/30/05

Date

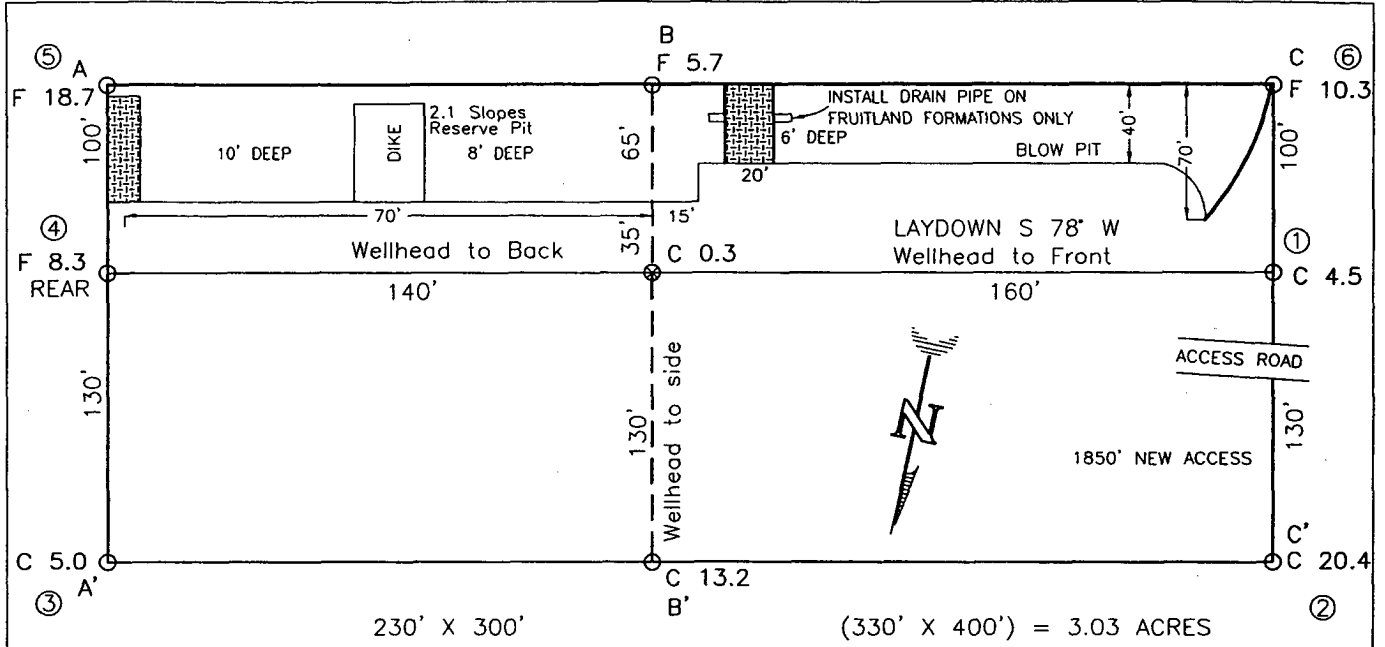
18 SURVEYOR CERTIFICATION

I hereby certify that the well location shown on this plat
was plotted from field notes of actual surveys made by
me or under my supervision, and that the same is true
and correct to the best of my belief.

JOHNA VUKONICH
Date
Signature and Seal of Professional Surveyor:
14831
17-9
REGISTERED PROFESSIONAL SURVEYOR

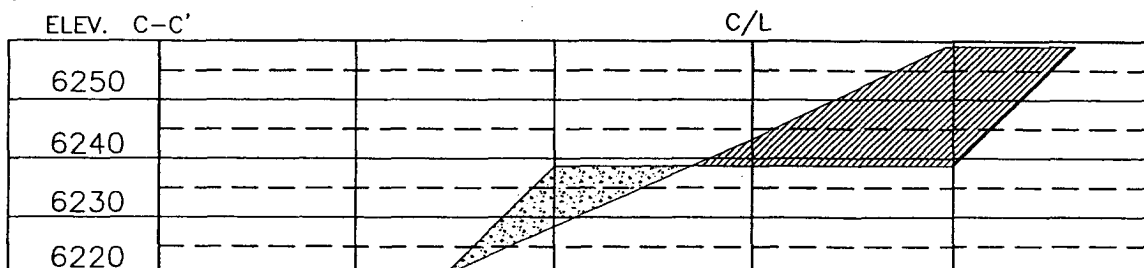
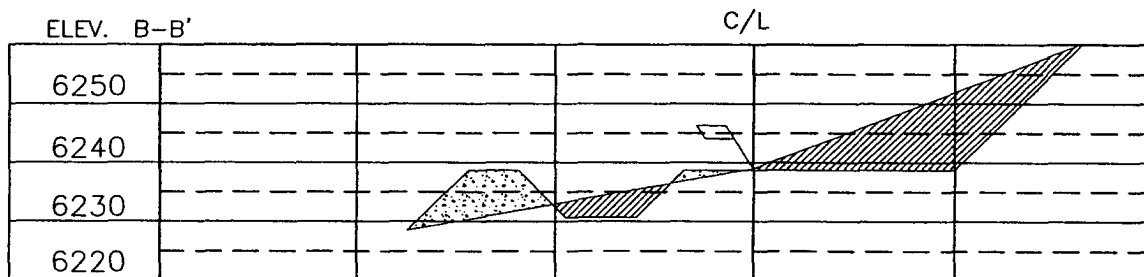
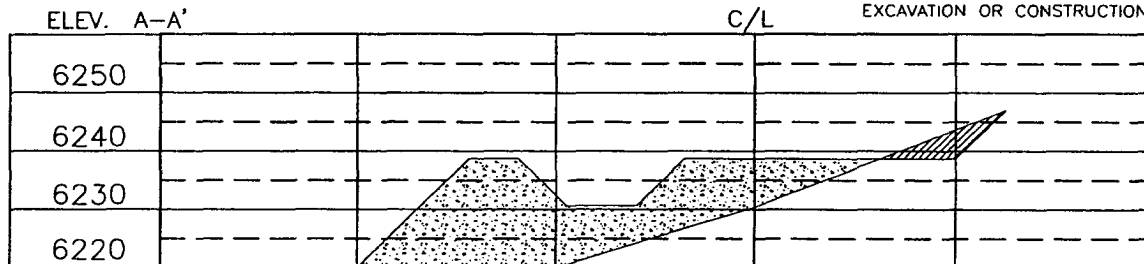
Certificate Number

HUNTINGTON ENERGY, LLC / BURLINGTON RESOURCES OIL & GAS COMPANY LP
 UTE MOUNTAIN UTE NO. 73, 1410 FNL 845 FWL
 SECTION 23, T-32-N, R-14-W, N.M.P.M., SAN JUAN COUNTY, NEW MEXICO
 GROUND ELEVATION: 6239, DATE: FEBRUARY 15, 2005



RESERVE PIT DIKE: TO BE 8' ABOVE DEEP SIDE (OVERFLOW - 3' WIDE AND 1' ABOVE SHALLOW SIDE).
 BLOW PIT: OVERFLOW PIPE HALFWAY BETWEEN TOP AND BOTTOM AND TO EXTEND OVER PLASTIC LINER AND INTO BLOW PIT.

NOTE: DAGGETT ENTERPRISES, INC. IS NOT LIABLE FOR UNDERGROUND UTILITIES OR PIPELINES. NEW MEXICO ONE CALL TO BE NOTIFIED 48 HOURS PRIOR TO EXCAVATION OR CONSTRUCTION.



NOTE: CONTRACTOR SHOULD CALL ONE-CALL FOR LOCATION OF ANY MARKED OR UNMARKED BURIED PIPELINES OR CABLES ON WELL PAD AND OR ACCESS ROAD AT LEAST TWO (2) WORKING DAYS PRIOR TO CONSTRUCTION.

REVISION:	DATE:	REVISED BY:

Daggett Enterprises, Inc.
 Surveying and Oil Field Services
 P. O. Box 15068 • Farmington, NM 87401
 Phone (505) 326-1772 • Fax (505) 326-6019
 NEW MEXICO L.S. No. 14831
 COPY: HTG029_CFB
 DATE: 3/11/05

DRAWN BY: G.V.
 ROW#: HTG029

OPERATIONS PLAN

Well Name: Ute Mountain Ute #73
Location: 1410' FNL, 845' FWL, SWNW Sec 23, T-32-N, R-14-W NMPM
San Juan, New Mexico
Formation: Wildcat Dakota
Elevation: 6239' GR

<u>Formation Tops:</u>	<u>Top</u>	<u>Bottom</u>	<u>Contents</u>
Mesaverde	Surface	530'	
Mancos	530'	1615'	
Gallup (Niobrara)	1615'	2285'	oil
Greenhorn	2285'	2340'	
Graneros	2340'	2510'	
Dakota	2510'	2740'	gas
Morrison	2740'	3000'	gas
TD	3000'		

Logging Program:

Mud log – 300' to TD
Open hole logs – DIL/SFL/GR/SP/ML – TD to surface casing
Cased hole logs– CBL/GR – TD to surface
Cores & DST's – none

Mud Program:

<u>Interval</u>	<u>Type</u>	<u>Weight</u>	<u>Vis.</u>	<u>Fluid Loss</u>
0 – 300'	Spud	8.4-9.0	40-50	no control
0 - 3000'	LSND	8.4-9.0	40-60	no control

Pit levels will be visually monitored to detect gain or loss of fluid control.

Casing Program (as listed, the equivalent, or better):

<u>Hole Size</u>	<u>Depth Interval</u>	<u>Csg. Size</u>	<u>Wt.</u>	<u>Grade</u>
11"	0 – 300'	7 5/8"	29.7#	P-110
6 1/4"	0 – 3000'	4 1/2"	10.5#	J-55

Tubing Program:

0 – 3000'	2 3/8"	4.7#	J-55
-----------	--------	------	------

BOP Specifications, Wellhead and Tests:

Surface to TD –

11" 2000 psi minimum double gate BOP stack (Reference Figure #1). After nipple-up prior to drilling out surface casing, rams and casing will be tested to 600 psi for 30 minutes.

2" nominal, 2000 psi minimum choke manifold (Reference Figure #3).

Completion Operations:

7 1/16" 2000 psi double gate BOP stack (Reference Figure #2). After nipple-up prior to completion, pipe rams, casing and liner top will be tested to 2000 psi for 15 minutes.

Float Equipment:

7 5/8" surface casing – saw tooth guide shoe.
Centralizers will be run in accordance with Onshore Order #2.

4 1/2" intermediate casing – guide shoe and self-fill float collar. Standard centralizers run every other joint above shoe. Standard centralizers thereafter every fourth joint up to the base of the surface pipe.

Wellhead:

7 5/8" x 4 1/2" x 2 3/8" x 2000 psi tree assembly.

General:

- Pipe rams will be actuated once each day and blind rams will be actuated once each trip to test proper functioning.
- An upper kelly cock valve with handle available and drill string valves to fit each drill string will be available on the rig floors at all times.
- BOP pit level drill will be conducted weekly for each drilling crew.
- All BOP tests and drills will be recorded in the daily drilling reports.
- Blind and pipe rams will be equipped with extension hand wheels.

Cementing:

7 5/8" surface casing –

Cement to surface w/174 sx Class A, B Portland Type I, II cement (244 cu. ft. of slurry). WOC 8 hours before pressure testing or drilling out from under surface casing.

4 1/2" production Casing -

Lead with 377 sx Premium Lite w/3% calcium chloride, 5pps LCM-1, and 1/4#/sack flocele, 0.4% FL-52, & 0.4% SMS. Tail w/90 sx Type III cement w/1% calcium chloride, 1/4#/sack flocele and 0.2% FL-52 (928 cu. ft., 50% excess to circulate to surface.)

Note: If open hole logs are run, cement volumes will be based on 25% excess over caliper volumes.

Saw tooth guide shoe on bottom. Bowspring centralizers will be run in accordance with Onshore Order #2.

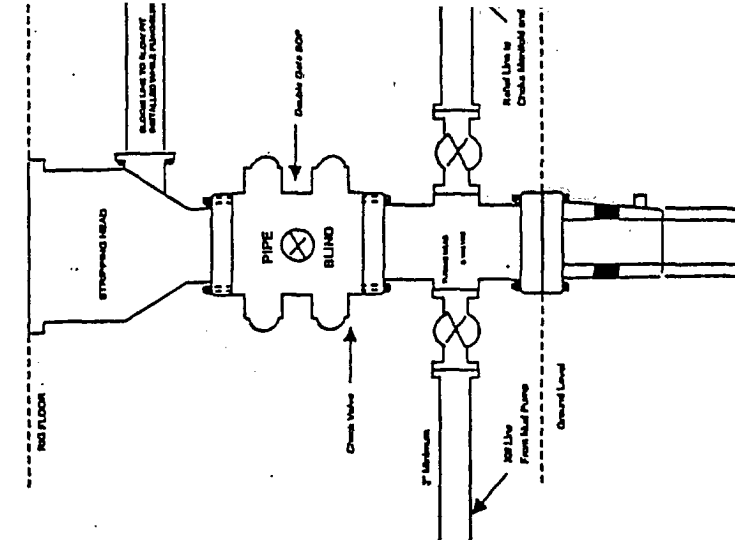
- If hole conditions permit, an adequate water space will be pumped ahead of each cement job to prevent cement/mud contamination or cement hydration.

Additional Information:

- The Dakota formation will be completed.
- No abnormal temperatures or hazards are anticipated.
- Anticipated pore pressure for the Dakota is 750 psi.
- Sufficient LCM will be added to the mud system to maintain well control, if lost circulation is encountered.
- The northwest quarter of Section 23 is dedicated to this well. This gas is dedicated.

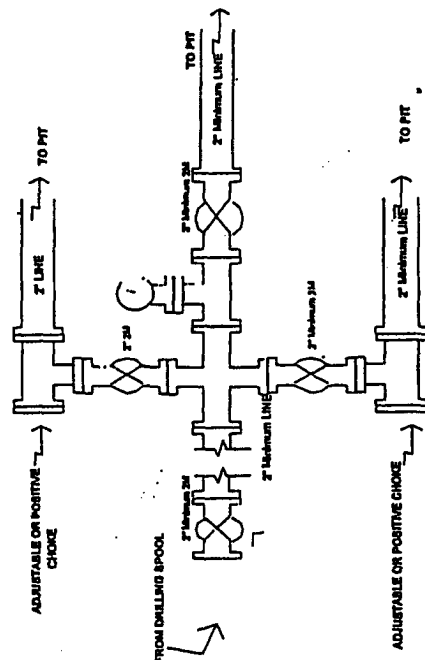
Completion/Workover Rig. BOP Configuration 2,000 psi System

Drilling Rig Choke Manifold Configuration 2000 psi System



Minimum BOP Installation for all Completion/Workover Operations. 7-1/16" bore, 2000 psi minimum working pressure double gate BOP to be equipped with blind a pipe rams. A stripping head to be installed on the top the BOP. All BOP equipment is 2000 psi working pressure or greater excluding 500 psi stripping head.

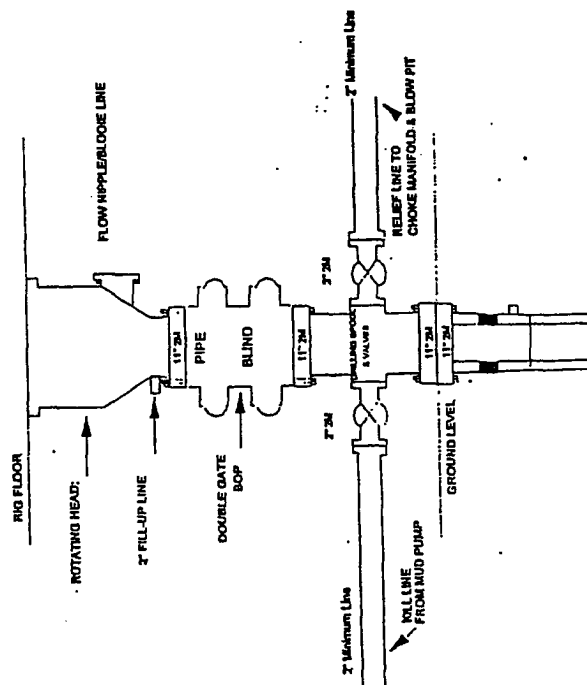
Figure #2



Choke manifold Installation from Surface Casing Point to Total Depth. 2,000psi working pressure equipment with two chokes.

Figure #3

Drilling Rig 2000 psi System



BOP Installation from Surface Casing Point to Total Depth. 11" Bore 10" Nominal, 2000 psi working pressure double gate BOP to be equipped with blind rams and pipe rams. A 500 psi rotating head on top of ram preventers. All BOP equipment is 2,000 psi working pressure

Figure #1