

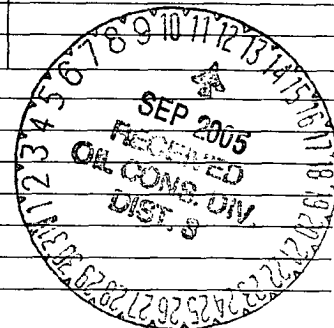
(August 1999)

UNITED STATES
DEPARTMENT OF THE INTERIOR
BUREAU OF LAND MANAGEMENT

WELL COMPLETION OR RECOMPLETION REPORT AND LOG

FORM APPROVED
OMB NO. 1004-0137
Expires: November 30, 2000

1a. Type of Well <input type="checkbox"/> Oil Well <input checked="" type="checkbox"/> Gas Well <input type="checkbox"/> Dry Other		5. Lease Serial No. SF078998							
b. Type of Completion <input type="checkbox"/> New Well <input checked="" type="checkbox"/> Work Over <input type="checkbox"/> Deepen <input type="checkbox"/> Plug Back <input type="checkbox"/> Diff. Resvr. Other		6. If Indian, Allottee or Tribe Name							
2. Name of Operator ConocoPhillips Company		7. Unit or CA Agreement Name and no. NMNM084048							
3. Address 5525 Highway 64 Farmington NM 87401		8. Lease Name and Well No. SAN JUAN 32-7 UNIT 213A							
4. Location of Well (Report location clearly and in accordance with Federal requirements)* At Surface SWNW SEC. 17 T31N R7W 2528 FNL & 402 FWL At top prod. interval reported below At total depth SENE SEC. 18 T31N R8W 2472 FNL & 474 FEL		9. API Well No. 30-045-32966							
14. Date Spudded 06/30/2005		15. Date T.D. Reached 07/22/2005							
16. Date Completed <input type="checkbox"/> D & A <input checked="" type="checkbox"/> Ready to Prod. 08/14/2005		10. Field and Pool, or Exploratory BASIN FRUTLAND COAL							
18. Total Depth: MD 3609 TVD 3609		11. Sec., T., R., M., on Block and Survey or Area E Sec: 17 Twn: 31N							
19. Plug Back T.D.: MD 3605 TVD 3605		12. County or Parish SAN JUAN							
20. Depth Bridge Plug Set: MD TVD		13. State NM							
21. Type of Electric & Other Mechanical Logs Run (Submit copy of each) mud logs		17. Elevations (DF, RKB, RT, GL)* 6525 GL							
22. Was well cored? <input checked="" type="checkbox"/> No <input type="checkbox"/> Yes (Submit analysis) Was DST run? <input checked="" type="checkbox"/> No <input type="checkbox"/> Yes (Submit analysis) Directional Survey? <input type="checkbox"/> No <input checked="" type="checkbox"/> Yes (Submit copy)									
23. Casing and Liner Record (Report all strings set in well)									
Hole Size	Size/Grade	Wt. (#/ft.)	Top (MD)	Bottom (MD)	Stage Cementer Depth	No. of Sks. & Type of Cement	Slurry Vol. (BBL)	Cement Top*	Amount Pulled
12.25	9.625H-40	32.3	0	230		150		0	15 BBL
8.75	7.0 J-55	23.0	0	3237		540		0	20 BBL
6.25	5.5 Liner	15.5	3172	3607		0			
24. Tubing Record									
Size	Depth Set (MD)	Packer Depth (MD)	Size	Depth Set (MD)	Packer Depth (MD)	Size	Depth Set (MD)	Packer Depth (MD)	
2.375	3515								
25. Producing Intervals									
Formation	Top	Bottom	Perforated Interval	Size	No. Holes	Perf. Status			
A) Basin Fruitland Coal	3270	3454	3270-3454	0.75	232	Open			
B)									
C)									
D)									
26. Perforation Record									
27. Acid, Fracture, Treatment, Cement Squeeze, Etc.									
Depth Interval		Amount and Type of Material							
		Underreamed 6.25" hole to 9.5" from 3243 to 3609'. This well was cavitated.							
28. Production - Interval A									
Date First Produced	Test Date	Hours Tested	Test Production	Oil BBL	Gas MCF	Water BBL	Oil Gravity Corr. API	Gas Gravity	Production Method
0814200	508/13/05	1	→	0	970	0			Gas Pumping Unit
Choice Size	Tbg. Press. Flwg.	Csg. Press.	24 Hr. Rate	Oil BBL	Gas MCF	Water BBL	Gas : Oil Ratio	Well Status	
2" Pitot	SI n/a	10 psi	→					Gas well shut-in	
Production - Interval B									
Date First Produced	Test Date	Hours Tested	Test Production	Oil BBL	Gas MCF	Water BBL	Oil Gravity Corr. API	Gas Gravity	Production Method
Choke Size	Tbg. Press. Flwg.	Csg. Press.	24 Hr. Rate	Oil BBL	Gas MCF	Water BBL	Gas : Oil Ratio	Well Status	
	SI		→						



ACCEPTED FOR RECORD

SEP 08 2005

FARMINGTON FIELD OFFICE
BY *[Signature]*

NMOC

(See Instructions and spaces for additional data on reverse side)

28b. Production - Interval C

Date First Produced	Test Date	Hours Tested	Test Production	Oil BBL	Gas MCF	Water BBL	Oil Gravity Corr. API	Gas Gravity	Production Method
			→						
Choke Size	Tbg. Press. Flwg. SI	Csg. Press.	24 Hr. Rate	Oil BBL	Gas MCF	Water BBL	Gas : Oil Ratio	Well Status	
			→						

28c. Production - Interval D

Date First Produced	Test Date	Hours Tested	Test Production	Oil BBL	Gas MCF	Water BBL	Oil Gravity Corr. API	Gas Gravity	Production Method
			→						
Choke Size	Tbg. Press. Flwg. SI	Csg. Press.	24 Hr. Rate	Oil BBL	Gas MCF	Water BBL	Gas : Oil Ratio	Well Status	
			→						

29. Disposition of Gas (Sold, used for fuel, vented, etc.)

Sold

30. Summary of Porous Zones (Include Aquifers):

Show all important zones or porosity and contents thereof: Cored intervals and all drill-stem tests, including depth interval tested, cushion used, time tool open, flowing and shut-in pressures and recoveries.

31. Formation (Log) Markers

Formation	Top	Bottom	Descriptions, Contents, etc.	Name	Top
					Meas. Depth
				Nacimiento	1118
				Ojo Alamo	2298
				Kirtland	2408
				Fruitland	3018
				Top Coal MD	3272
				B Main Coal MD	3382
				PC Tongue MD	3472
				Top PCCF MD	3586

32. Additional remarks (include plugging procedure):

This is a single well (sidetrack) producing from the Basin Fruitland Coal. Attached is the Wellbore Schematic and the Daily Summaries.

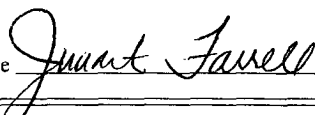
33. Circle enclosed attachments:

1. Electrical/Mechanical Logs (1 full set req'd.) 2. Geological Report 3. DST Report 4. Directional Survey
5. Sundry Notice for plugging and cement verification 6. Core Analysis 7. Other

34. I hereby certify that the foregoing and attached information is complete and correct as determined from all available records (see attached instructions)*

Name (please print) Juanita FarrellTitle Regulatory Analyst

Signature

Date 08/25/2005

Title 18 U.S.C. Section 101 and Title 43 U.S.C. Section 1212, make it a crime for any person knowingly and willfully to make to any department or agency of the United States and false, fictitious or fraudulent statements or representations as to any matter within its jurisdiction.

Regulatory Summary

ConocoPhillips

SAN JUAN 32 7 UNIT #213A

Initial Completion: 7/18/2005 00:00

API/Bottom Well	County	State/Province	Surface Legal Location	N/S Dist (ft)	N/S Ref	E/W Dist (ft)	E/W Ref
	San Juan	NEW MEXICO	NMPM-31N-07W-17-E	2,528.00	N	402.00	W
Ground Elevation (ft)	Latitude (DMS)	Longitude (DMS)	Spud Date	Rig Release Date			
5,528.00	36° 53' 58.9992" N	107° 36' 5.0004" W	6/30/2005				

7/18/2005 07:00 - 7/18/2005 21:00

Last 24hr Summary

safety meeting & jsa review's @ start of all operation's = load out equipment, move rig & equipment to location = spot in rig & equipment = long rig move = s.d.o.n.

7/19/2005 07:00 - 7/19/2005 20:00

Last 24hr Summary

safety meeting & jsa review's @ start of all operation's = ru rig & support equipment

7/20/2005 07:00 - 7/20/2005 20:00

Last 24hr Summary

safety meeting & jsa review's @ start of all operation's & crew change's = nu bop's, hcr valve's, choke manifold & line's, blooie line's, rig floor, 2 7/8" equipment, waiting on dp & dc's from tuboscope, service rig & equipment, test 7" csg, blind ram's, 2 7/8" ram's, good test, secured well & location, s.d.o.n. = attention - pumped flow blown inspection on all dp, dc's & sub's in town by tuboscope, found 6 jt's need to be resurface on dp.

7/21/2005 07:00 - 7/22/2005 06:00

Last 24hr Summary

safety meeting & jsa review's @ start of all operation's & crew change's = pu pipe out of basket & put on pipe rack, tally pipe, gih pu & mu bha & dp to 3,180', pu power swivel, unload hole, drill out cmt, 7" float collar & 7" shoe to 3,243' w / air assist, drill ahead w / 6 1/4" bit to td @ 3,609' w / air assist, r&r c/o to td, dry up well for test.

7/22/2005 06:00 - 7/23/2005 06:00

Last 24hr Summary

safety meeting & jsa review's @ start of all operation's & crew change's = dry up hole, puh inside 7" csg, test well, cooh w / pipe & bha, rih w / 9 1/2" under-reamer, under-ream f/ 3,243' - t/ 3,609' td w / air assist, circ bottom's up to clean wellbore, puh inside 7" csg w / bha, hang back swivel.

7/23/2005 06:00 - 7/24/2005 06:00

Last 24hr Summary

safety meeting & jsa review's @ start of all operation's & crew change's = circ bottom's up to clean 7" csg, puh, hang back swivel, cooh w / under-reamer, rih w / bit & bha to 7" csg shoe, r&r c/o t/ 3,454' w / air assist, puh inside 7" csg w / bha, test well, surge well w / air assist & water pad's, rih c/o f/ 3,200' inside 7" csg to 3,300' w / air assist

7/24/2005 06:00 - 7/25/2005 06:00

Last 24hr Summary

safety meeting & jsa review's @ start of all operation's & crew change's = r&r c/o t/ 3,454' w / air assist, 1,800 scfm air, 10 to 8 bph mist, 1 gal foamer, 1/4 gal corrosion inhibitor per 15 bbl's of fluid pumped, return's to surface, med to light coal & fine's w / 0 bph water gain, 6 down to 2 bucket's per hour off sample catcher, 85% coal

7/25/2005 06:00 - 7/26/2005 06:00

Last 24hr Summary

safety meeting & jsa review's @ start of all operation's & crew change's = r&r c/o t/ 3,454' w / air assist, puh inside 7" csg w / bha, bop drill, surge well, r&r c/o f/ 3,200' inside 7" csg t/ 3,390' w / air assist

7/26/2005 06:00 - 7/27/2005 06:00

Last 24hr Summary

safety meeting & jsa review's @ start of all operation's & crew change's = r&r c/o t/ 3,454' w / air assist

7/27/2005 06:00 - 7/28/2005 06:00

Last 24hr Summary

safety meeting & jsa review's @ start of all operation's & crew change's = r&r c/o t/ 3,454' w / air assist, puh inside 7" csg, surge's # 7 - # 8 - # 9 w / air assist & water pad's, r&r c/o from inside 7" csg @ 3,200' - t/ 3,390' w / air assist.

7/28/2005 06:00 - 7/29/2005 06:00

Last 24hr Summary

safety meeting & jsa review's @ start of all operation's & crew change's = r&r c/o t/ 3,454' w / air assist

7/29/2005 06:00 - 7/30/2005 06:00

Last 24hr Summary

safety meeting & jsa review's @ start of all operation's & crew change's, r&r c/o t/ 3,454' w / air assist, puh, test well 0# flow pressure, r&r c/o f/ 3,200' - t/ 3,390' w / air assist.

7/30/2005 06:00 - 7/31/2005 06:00

Last 24hr Summary

safety meeting & jsa review's @ start of all operation's & crew change's = r&r c/o t/ 3,422' w / air assist, 1,800 scfm air, 10 bph mist, 1/2 gal foamer, 1/4 gal corrosion inhibitor per 15 bbl's of fluid pumped, return's to surface, heavy to med coal & fine's w / 0 bph water gain, 10 down to 5 bucket's per hour off sample catcher, 85% coal.

7/31/2005 06:00 - 8/1/2005 06:00

Last 24hr Summary

safety meeting & jsa review's @ start of all operation's & crew change's = r&r c/o t/ 3,454' w / air assist, 1,100 scfm to 1,000 scfm air, 6 bph mist, 1/2 gal foamer, 1/4 gal corrosion inhibitor per 15 bbl's of fluid pumped, return's to surface, med to light coal & fine's w / 3 bph water gain, 7 down to 2 bucket's per hour off sample catcher, 95% coal.

8/1/2005 06:00 - 8/2/2005 06:00

Last 24hr Summary

safety meeting & jsa review's @ start of all operation's & crew change's = r&r c/o t/ 3,486' w / air assist, puh inside 7" csg, test well, natural surge well, surge well 2# flow pressure, r&r c/o f/ 3,200' - t/ 3,322' w / air assist

Regulatory Summary

ConocoPhillips

SAN JUAN 32 7 UNIT #213A

8/2/2005 06:00 - 8/3/2005 06:00

Last 24hr Summary

safety meeting & isa review's @ start of all operation's & crew change's = r&r c/o t/ 3,390' w / air assist,

8/3/2005 06:00 - 8/4/2005 06:00

Last 24hr Summary

safety meeting & isa review's @ start of all operation's & crew change's = c/o t/ 3,390' w/ air assist, puh, bop drill, service rig & equipment, r&r c/o t/ 3,390' w / air assist.

8/4/2005 06:00 - 8/5/2005 06:00

Last 24hr Summary

safety meeting & isa review's @ start of all operation's & crew change's = c/o t/ 3,390' w / air assist, puh inside 7" csg w / bha, weld on rig drum, r&r c/o t/ 3,200' - t/ 3,390' w / air assist.

8/5/2005 06:00 - 8/6/2005 06:00

Last 24hr Summary

safety meeting & isa review's @ start of all operation's & crew change's = c/o t/ 3,454' w / air assist, puh inside 7" csg w / bha, test well, surge well w / natural formation pressure of 150#

8/6/2005 06:00 - 8/7/2005 06:00

Last 24hr Summary

safety meeting & isa review's @ start of all operation's & crew change's = surge well natural, r&r c/o f/ 3,200' - t/ 3,390' w / air assist.

8/7/2005 06:00 - 8/8/2005 06:00

Last 24hr Summary

safety meeting & isa review's @ start of all operation's & crew change's = r&r c/o t/ 3,390' w / air assist, puh inside 7" csg w / bha, circ 7" csg clean & service rig & all equipment, r&r c/o f/ 3,200' - t/ 3,390' w / air assist

8/8/2005 06:00 - 8/9/2005 06:00

Last 24hr Summary

safety meeting & isa review's @ start of all operation's & crew change's = r&r c/o & condition hole to 3,454' w / air assist, 1,600 scfm air, 6 to 8 bph mist, 1 gal foamer, 1/2 gal polymer, 1/4 gal corrosion inhibitor per 15 bbl's of fluid pumped, return's to surface, med coal & fine's w / 1 to 2 bph water gain, 4 to 7 bucket's per run off sample catcher, 95% to 100% coal.

8/9/2005 06:00 - 8/10/2005 06:00

Last 24hr Summary

safety meeting & isa review's @ start of all operation's & crew change's, r&r c/o t/ 3,454', puh, test well & work on power pack, blow down well slowly, r&r c/o & condition hole for liner t/ 3,454' w / air assist.

8/10/2005 06:00 - 8/11/2005 06:00

Last 24hr Summary

safety meeting & isa review's @ start of all operation's & crew change's = r&r c/o & condition hole to td @ 3,609' for liner

8/11/2005 06:00 - 8/12/2005 06:00

Last 24hr Summary

safety meeting & isa review's @ start of all operation's & crew change's = r&r c/o t/ 3,609' td w / air assist, short trip puh inside 7" csg w / bha, flow well to check hole condition's, rih tag @ 3,370', r&r c/o t/ 3,609' td w / air assist, short trip puh inside 7" csg w / bha, flow well to check hole condition's, rih tag @ 3,385', r&r c/o & condition hole t/ 3,609' td w / air assist, puh inside 7" csg, hang back power swivel.

8/12/2005 06:00 - 8/12/2005 19:00

Last 24hr Summary

safety meeting & isa review's @ start of all operation's & crew change's = cooh w / pipe, ru 5 1/2" equipment, test, run liner, cooh laying down dp, bad storm, s.d.o.n.

8/13/2005 07:00 - 8/13/2005 19:00

Last 24hr Summary

safety meeting & isa review's @ start of all operation's & crew change's = cooh laying down dp, dc's & setting tool, perf 5 1/2" liner, ru & test 2 3/8" ram's, gih pu tubing, rd to pbtd, puh & land tubing hanger, nd bop & nu wellhead, secured well & location, s.d.o.n.

8/14/2005 07:00 - 8/14/2005 19:00

Last 24hr Summary

safety meeting & isa review's @ start of all operation's & crew change's = had 170# on csg, blow down well, nd bop's & nu pumping wellhead, spot in rod float, rih pu pump & rod's, space out rod's, test tubing & pump, hang off on stuffin box, rd & release rig & equipment = s,d,o.n. = job complete - drop from report

END OF WELL SCHEMATIC

Well Name: San Juan 32-7 #213A
 API #: 30-045-32966
 Location: 2528' FNL & 402' FWL
 Sec. 17 - T31N - R7W
 San Juan County, NM
 Elevation: 6525' GL (above MSL)
 Drl Rig RKB: 13' above Ground Level
 Datum: Drl Rig RKB = 13' above GL

Note - this well is equipped with rods & pump
 7-1/16" 3M x 2-3/8" EUE 8rd Bonnet
 11" 3M x 7-1/16" 3M Tubing Head
 9-5/8" 8 RD x 11" 3M Casing Head

Patterson Rig: #747
 Spud: 30-Jun-05
 Spud Time: 1:30
 Release Drl Rig: 8-Jul-05
 Time Release Rig: 0:00
 Move In Cav Rig: 18-Jul-05
 Release Cav Rig: 14-Aug-05

Surface Casing Date set: 30-Jun-05
 Size 9 5/8 in
 Set at 230 ft # Jnts: 5
 Wt. 32.3 ppf Grade H-40
 Hole Size 12 1/4 in Conn STC
 Excess Cmt 125 %
 T.O.C. SURFACE Csg Shoe 230 ft
 TD of 12-1/4" hole 240 ft

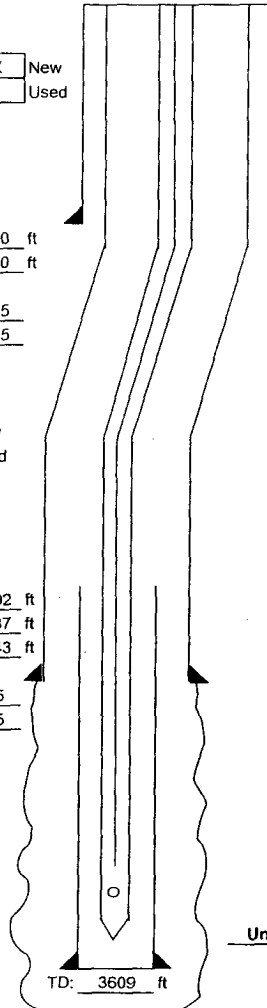
Notified BLM @ 15:00 hrs on 28-Jun-05
 Notified NMOCD @ 15:00 hrs on 28-Jun-05

☒ New
☐ Used

Intermediate Casing Date set: 7-Jul-05
 Size 7 in 76 jts
 Set at 3237 ft 0 pups
 Wt. 23 ppf Grade J-55
 Hole Size 8 3/4 in Conn LTC
 Excess Cmt 160 % Top of Float Collar 3192 ft
 T.O.C. SURFACE Bottom of Casing Shoe 3237 ft
 Pup @ TD of 8-3/4" Hole 3243 ft
 Pup @
 Notified BLM @ 17:00 hrs on 07-Jul-05
 Notified NMOCD @ 17:00 hrs on 07-Jul-05

☒ New
☐ Used

Production Liner Date set: 12-Aug-05
 Size 5 1/2 in
 Nominal Wt. 15.5 ppf
 Grade J-55
 # Jnts: 10
 Hole Size 6.25/9.5 inches
 Underreamed 6-1/4" hole to 9.5" from 3243' to 3609'
 Top of Liner 3172 ft
 PBTD 3605 ft
 Bottom of Liner 3607 ft

**Surface Cement**

Date cmt'd: 30-Jun-05
 Lead: 150 sx Class G Cement
 + 2% BWOC S001 Calcium Chloride
 + 0.25 lb/sx D029 Cellophane Flakes
 1.16 cuft/sx, 174.0 cuft slurry at 15.8 ppg
 Displacement: 15.0 bbls fresh wtr
 Bumped Plug at: 5:30 hrs w/ 220 psi
 Final Circ Press: 90 psi @ 2.0 bpm
 Returns during job: YES
 CMT Returns to surface: 15 bbls
 Floats Held: No floats used
 W.O.C. for 6.00 hrs (plug bump to start NU BOP)
 W.O.C. for 8.00 hrs (plug bump to test csg)

Intermediate Cement

Date cmt'd: 7-Jul-05
 Lead: 440 sx Class G Cement
 + 3% D079 Extender
 + 0.25 lb/sx D029 Cellophane Flakes
 + 0.2% D046 Antifoam
 2.61 cuft/sx, 1148.4 cuft slurry at 11.7 ppg
 Tail: 100 sx 50/50 POZ: Class G cement
 + 2% D020 Bentonite
 + 2% S001 Calcium Chloride
 + 5 lb/sx D024 Gilsomite
 + 0.25 lb/sx D029 Cellophane Flakes
 + 0.1% D046 Antifoam
 1.27 cuft/sx, 127 cuft slurry at 13.5 ppg
 Displacement: 125.9 bbls
 Bumped Plug at: 17:00 hrs w/ 1135 psi
 Final Circ Press: 623 psi @ 2 bpm
 Returns during job: YES
 CMT Returns to surface: 20 bbls
 Floats Held: X Yes No

Uncemented Liner

Schematic prepared by:
 Aaron Fuhr, Development Engineer
 14-Aug-2005

COMMENTS:

9-5/8" Surf:	No float equipment was run. Ran a guide shoe and an aluminum baffle plate 1 jt above the guide shoe @ 187'. Displaced top wiper plug with water. Shut in casing head and WOC before backing out landing jt. CENTRALIZERS @ 220, 144', 100' & 57'. Total: 4
7" Intermediate	DISPLACED W/ 125.9 BBLs. 8.4 PPG SLIGHTLY POLYMERIZED DRILL WATER TR-1 CENTRALIZERS @ 3227', 3149', 3063', 2976', 2891', 2805', 2722', 2631', 2554', 462', 376', 295', 214', 85', & 43'. TURBOLIZERS @ 2511', 2466', & 2425'. Total: 15
5.5" Liner	Ran 6 1/4" bit and bit sub on bottom of liner. Ran and set the liner w/ TIW H-Latch Drop Off Tool (no liner hanger). Total: 3
Perforations	Perforated 5-1/2" liner with guns on E-line at 4 spf, 0.75" diameter, 120 degree phased holes Perf. Intervals: 3450'-3454', 3436'-3442', 3364'-3382', 3322'-3328', 3312'-3316', 3294'-3302', 3286'-3290', 3278'-3282', 3270'-3274'. Total 232 holes
Tubing	2-1/16" Sawtooth collar with 2 1/16" female nipple attached to 2/16" - 2 3/8" XO. 2 3/8" mud anchor 31.5 ft long with 1/4" hole below upset. 2-3/8" OD (1.78" ID) F-Nipple, and 111 jts 2-3/8" 4.7# J-55 EUE 8rd tubing Bottom of Mud Anchor at 3513'. Top of F-Nipple at 3481' MD RKB.
Pump & Rods	1" x 12" strainer nipple on bottom of 2" x 1-1/4" x 12" RHAC-ZDV insert pump, 4 each 1 1/4" x 25' sinker bars, 134 each 3/4" rods w/fst 2 3/8" guided rods= 5 guides per rod, spaced out with 1 ea 8', 6' & 2' x 3/4" OD pony rods & 1 ea 1-1/4" OD x 22' polished rod. Set pump in F-Nipple at 3481' MD RKB