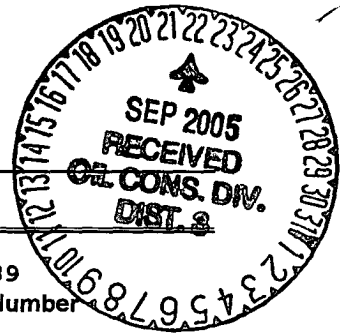


UNITED STATES
DEPARTMENT OF THE INTERIOR
BUREAU OF LAND MANAGEMENT



APPLICATION FOR PERMIT TO DRILL, DEEPEN, OR PLUG BACK

1a. Type of Work DRILL	2005 AUG 18 11 27 RECEIVED 070 FARMINGTON NM	5. Lease Number NMNM-6889 Unit Reporting Number
1b. Type of Well GAS		6. If Indian, All. or Tribe
2. Operator BURLINGTON RESOURCES Oil & Gas Company		7. Unit Agreement Name
3. Address & Phone No. of Operator PO Box 4289, Farmington, NM 87499 (505) 326-9700		8. Farm or Lease Name Reese Mesa 9. Well Number #102S
4. Location of Well Unit L (NWSW), 2440' FSL, 690' FWL Latitude 36° 59.8653'N Longitude 107° 40.0155'W		10. Field, Pool, Wildcat Basin Fruitland Coal 11. Sec., Twn, Rge, Mer. (NMPM) Sec. 10, T32N, R8W API # 30-045- 33289
14. Distance in Miles from Nearest Town 30.3 miles from the Post Office in Blanco, NM	12. County San Juan	13. State NM
15. Distance from Proposed Location to Nearest Property or Lease Line 690'		
16. Acres in Lease	17. Acres Assigned to Well 290.69 Lots 6-11, 14-16 R-9055 Tract 4	
18. Distance from Proposed Location to Nearest Well, Drlg, Compl, or Applied for on this Lease 2428' - Reese Mesa #6		
19. Proposed Depth 3954'	20. Rotary or Cable Tools Rotary	
21. Elevations (DF, FT, GR, Etc.) 7014' GL	22. Approx. Date Work will Start	
23. Proposed Casing and Cementing Program See Operations Plan attached		
24. Authorized by: <u>Amanda Sandhu</u> Regulatory Compliance Assistant II	8-18-05 Date	

PERMIT NO. _____ APPROVAL DATE _____
APPROVED BY [Signature] TITLE AFM DATE 9/29/05

Archaeological Report attached
Threatened and Endangered Species Report attached

NOTE: This format is issued in lieu of U.S. BLM Form 3160-3
Title 18 U.S.C. Section 1001, makes it a crime for any person knowingly and willfully to make to any department or agency of the United States any false, fictitious or fraudulent statements or presentations as to any matter within its jurisdiction.

DISTRICT I
1825 N. French Dr., Hobbs, N.M. 88240

State of New Mexico
Energy, Minerals & Natural Resources Department

Form C-102
Revised August 15, 2000

DISTRICT II
811 South First, Artesia, N.M. 88210

DISTRICT III
1000 Rio Brazos Rd., Aztec, N.M. 87410

DISTRICT IV
2040 South Pacheco, Santa Fe, NM 87505

OIL CONSERVATION DIVISION

2040 South Pacheco
Santa Fe, NM 87505

Submit to Appropriate District Office
State Lease - 4 Copies
Fee Lease - 3 Copies

2005 AUG 18 PM 1 27

☐ AMENDED REPORT

WELL LOCATION AND ACREAGE DEDICATION PLAT

¹ API Number 30-045-	² Pool Code 71629	³ Pool Name 070 FARMINGTON NM Basin Fruitland Coal
⁴ Property Code 18606	⁵ Property Name REESE MESA	⁶ Well Number 102S
⁷ GRID No. 14538	⁸ Operator Name BURLINGTON RESOURCES OIL AND GAS COMPANY LP	⁹ Elevation 7014'

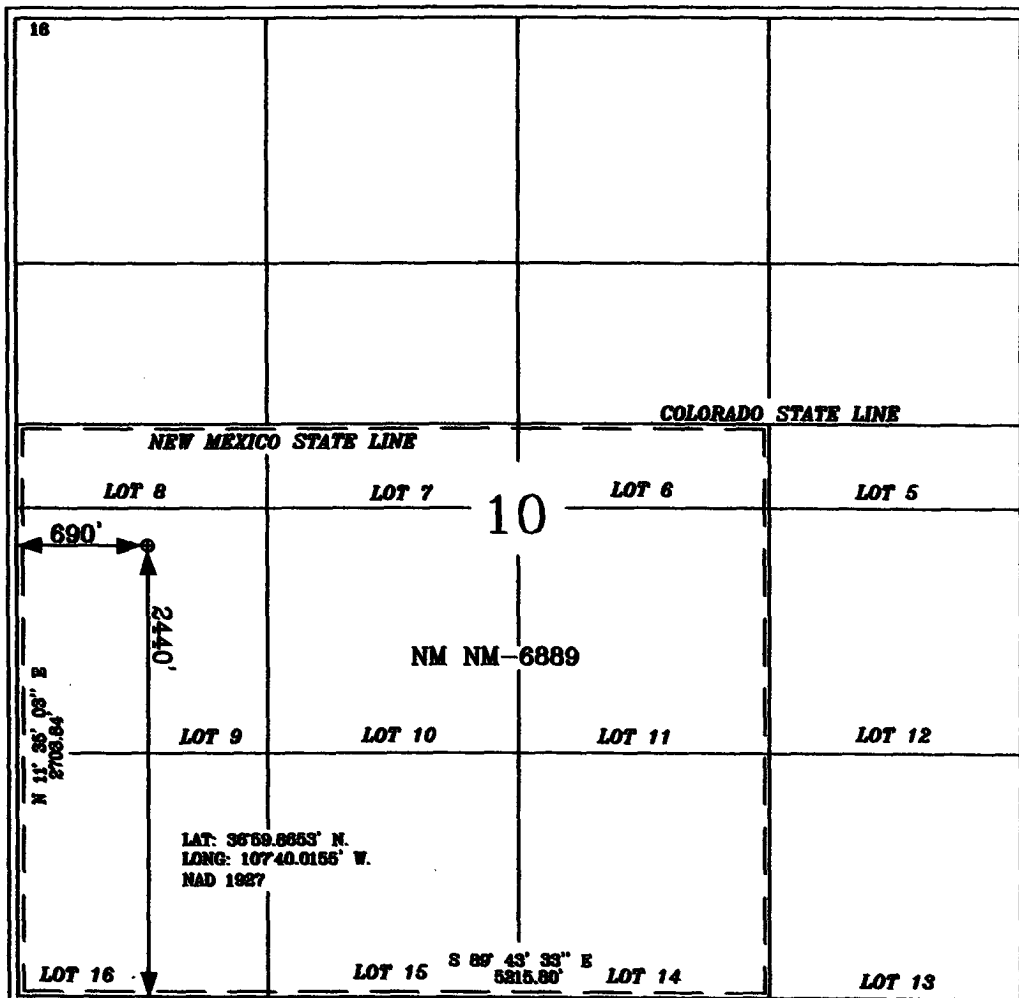
¹⁰ Surface Location

UL or lot no.	Section	Township	Range	Lot Idn	Feet from the	North/South line	Feet from the	East/West line	County
L	10	32-N	8-W		2440'	SOUTH	690'	WEST	SAN JUAN

¹¹ Bottom Hole Location If Different From Surface

UL or lot no.	Section	Township	Range	Lot Idn	Feet from the	North/South line	Feet from the	East/West line	County
L									
¹² Dedicated Acres 290.69			¹³ Joint or Infill		¹⁴ Consolidation Code		¹⁵ Order No. R-9055 Tract 4		

NO ALLOWABLE WILL BE ASSIGNED TO THIS COMPLETION UNTIL ALL INTERESTS HAVE BEEN CONSOLIDATED
OR A NON-STANDARD UNIT HAS BEEN APPROVED BY THE DIVISION



17 OPERATOR CERTIFICATION

I hereby certify that the information contained herein is true and complete to the best of my knowledge and belief

Patsy Clugston
Signature

Patsy Clugston
Printed Name

Sr. Regulatory Specialist
Title

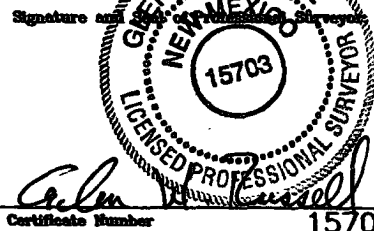
7-7-05
Date

18 SURVEYOR CERTIFICATION

I hereby certify that the well location shown on this plat was plotted from field notes of actual surveys made by me or under my supervision, and that the same is true and correct to the best of my belief.

Date of Survey

Signature



Certificate Number

15703

State of New Mexico

Energy, Minerals and Natural Resources

Form C-103

May 27, 2004

OIL CONSERVATION DIVISION

1220 South St. Francis Dr.

Santa Fe, NM 87505

WELL API NO.

30-045-

5. Indicate Type of Lease

STATE ☐FEE ☐

6. State Oil & Gas Lease No.

NMNM-6889

7. Lease Name or Unit Agreement Name

Reese Mesa

8. Well Number

102S

9. OGRID Number

14538

10. Pool name or Wildcat

Basin Fruitland Coal

SUNDRY NOTICES AND REPORTS ON WELLS

(DO NOT USE THIS FORM FOR PROPOSALS TO DRILL OR TO DEEPEN OR PLUG BACK TO A DIFFERENT RESERVOIR. USE "APPLICATION FOR PERMIT" (FORM C-101) FOR SUCH PROPOSALS.)

1. Type of Well:

Oil Well ☐Gas Well ☒

Other

2. Name of Operator

BURLINGTON RESOURCES OIL & GAS COMPANY LP

3. Address of Operator

3401 E. 30TH STREET, FARMINGTON, NM 87402

4. Well Location

Unit Letter L : 2440 feet from the South line and 690 feet from the West lineSection 10 Township 32N Range 8W NMPM County San Juan, NM

11. Elevation (Show whether DR, RKB, RT, GR, etc.)

7014'

Pit or Below-grade Tank Application

☒ or Closure ☐Pit type New Drill Depth to Groundwater > 100' Distance from nearest fresh water well> 1000' Distance from nearest surface water> 1000'

Pit Liner Thickness:

12

mil

Below-Grade Tank:

Volume

bbls;

Construction Material

12. Check Appropriate Box to Indicate Nature of Notice, Report or Other Data

NOTICE OF INTENTION TO:

PERFORM REMEDIAL WORK ☐TEMPORARILY ABANDON ☐PULL OR ALTER CASING ☐PLUG AND ABANDON ☐CHANGE PLANS ☐MULTIPLE COMPL ☐

OTHER:

New Drill ☒

SUBSEQUENT REPORT OF:

REMEDIAL WORK ☐COMMENCE DRILLING OPNS. ☐CASING/CEMENT JOB ☐ALTERING CASING ☐P AND A ☐OTHER: ☐

13. Describe proposed or completed operations. (Clearly state all pertinent details, and give pertinent dates, including estimated date of starting any proposed work). SEE RULE 1103. For Multiple Completions: Attach wellbore diagram of proposed completion or recompletion.

Burlington Resources proposes to construct a new drilling pit and an associated vent/flare pit. Based on Burlington's interpretation of the Ecosphere's risk ranking criteria, the new drilling pit will be a lined pit as detailed in Burlington's Revised Drilling / Workover Pit Construction / Operation Procedures dated November 11, 2004 on file at the NMOCD office. A portion of the vent/flare pit will be designed to manage fluids and that portion will be lined as per the risk ranking criteria. Burlington Resources anticipates closing these pits according to the Drilling / Workover Pit Closure Procedure dated August 2, 2004 on file at the NMOCD office.

I hereby certify that the information above is true and complete to the best of my knowledge and belief. I further certify that any pit or below-grade tank has been/will be constructed or closed according to NMOCD guidelines ☐, a general permit ☒ or an (attached) alternative OCD-approved plan ☐.

SIGNATURE

TITLE

Regulatory Assistant II

DATE

7/21/2005

Type or print name

Amanda Sandovar

E-mail address:

asandoval@br-inc.com

Telephone No.

326-9700

For State Use Only

APPROVED BY

TITLE

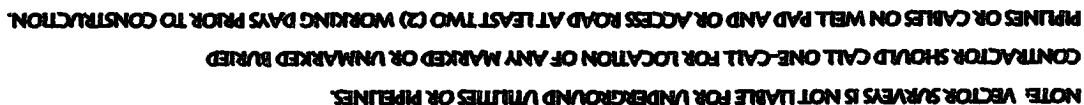
DEPUTY OIL & GAS INSPECTOR, DIST. 4

DATE

SEP 22 2005

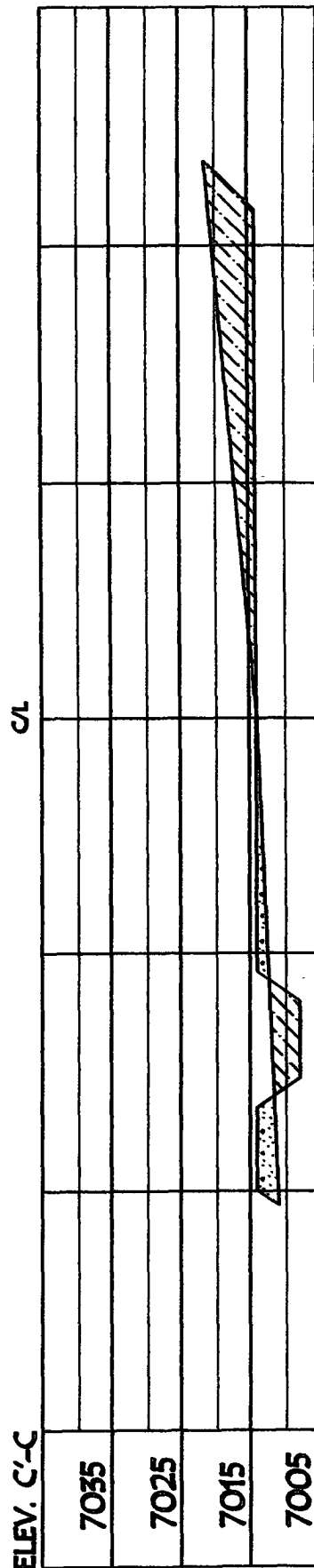
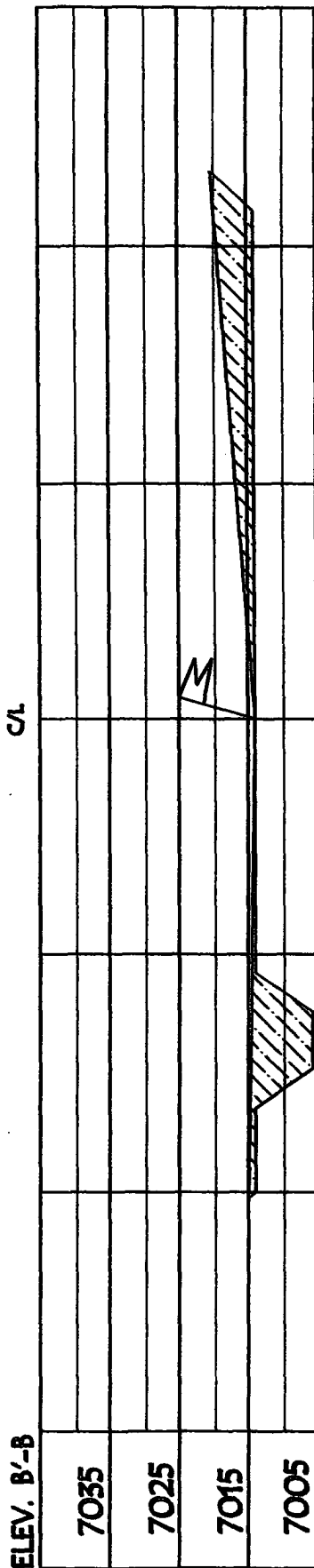
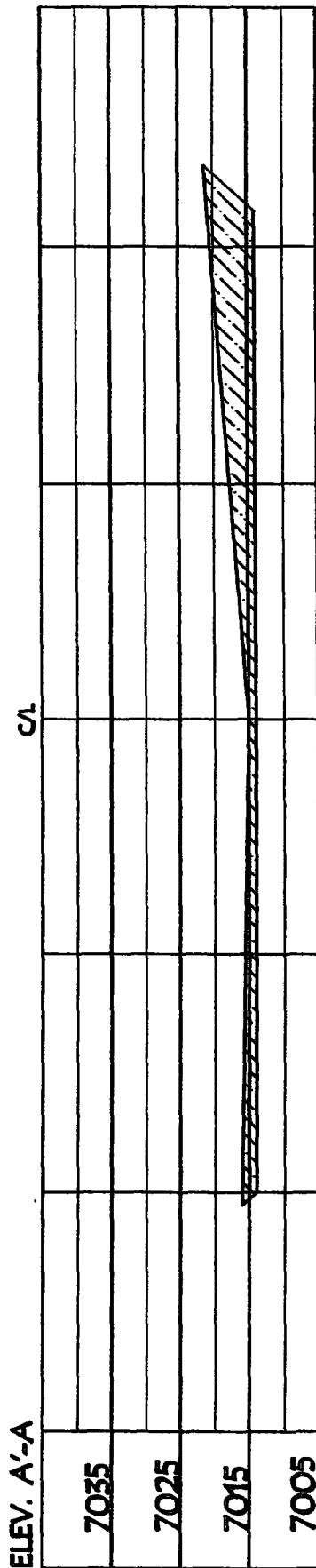
Conditions of Approval (if any):

RESERVE PIT DIKE, TO BE 8' ABOVE DEEP SIDE (OVERFLOW - 3' WIDE AND 1' ABOVE SHALLOW SIDE).



LATITUDE: 36° 59.8653' LONGITUDE: 107° 40.0155' NAD27

BURLINGTON RESOURCES OIL & GAS COMPANY LP
REESE MESA 102S, 2440' FSL & 690' FWL
SECTION 10, T-32-N, R-8-W, NMPM, SAN JUAN COUNTY, NM
GROUND ELEVATION: 7014', DATE: JUNE 22, 2005



NOTE: VECTOR SURVEYS IS NOT LIABLE FOR UNDERGROUND UTILITIES OR PIPELINES.
 CONTRACTOR SHOULD CALL ONE-CALL FOR LOCATION OF ANY MARKED OR UNMARKED BURIED
 PIPELINES OR CABLES ON WELL PAD AND OR ACCESS ROAD AT LEAST TWO (2) WORKING DAYS PRIOR TO CONSTRUCTION.

OPERATIONS PLANS FOR FRUITLAND COAL WELLS

Well Name: Reese Mesa #102S
Location: Unit L, 2440' FSL, 690' FWL
Sec. 10 T-32-N, R-8-W
San Juan County, NM
Latitude 36° 59.8653'N
Longitude 107° 40.0155'W

Formation: Basin Fruitland Coal

<u>Formation Tops:</u>	<u>Top</u>	<u>Bottom</u>	<u>Contents</u>
Surface	San Jose	2525'	
Ojo Alamo	2525'	2628'	aquifer
Kirtland	2628'	3540'	gas
Top/Fruitland Coal	3540'		gas
Base/Fruitland Coal	3896'		
Intermediate TD	3490'		
Pictured Cliffs	3873'		gas
TD	3954'		

This will be a single producing FC well, and is not an HPA well. Burlington requests permission to use the 85' into the Pictured Cliffs interval as a sump. There will be a mudlogger on site during drilling to verify PC gas isn't reached.

Logging Program:

Mudlog from intermediate to TD
Cores - none

Mud Program:

<u>Interval</u>	<u>Type</u>	<u>Weight</u>	<u>Vis.</u>	<u>Fluid Loss</u>
0- 120'	Spud Mud/Air/Air Mist	8.4-9.0	40-50	no control
120'- 3490'	LSND/Clear Water/ Starch-Polymer	8.4-9.0	30-60	no control
3490' - 3954'	Air/Mist			

Circulating media will be contractor dependent.

Pit levels will be visually monitored to detect gain or loss of fluid control.

Casing Program (as listed, the equivalent, or better):

<u>Hole Size</u>	<u>Depth Interval</u>	<u>Csg. Size</u>	<u>Wt.</u>	<u>Grade</u>
12 1/4"	0' - 120'	9 5/8"	32.3#	H-40
8 3/4"	120' - 3490'	7"	20.0#	J-55
6 1/4"	3490'- 3954'	5 1/2"	15.5#	J-55
or open hole				

Tubing Program:

0' - 3954' 2 3/8" 4.7# J-55

BOP and tests:

Surface to intermediate TD - 11" 2000 psi (minimum) double gate BOP stack (Reference Figure #1). Prior to drilling out surface casing, test BOPE to 600 psi for 30 min.

Intermediate TD to Total Depth - 7 1/6" 2000 psi (minimum) completion BOP stack (Reference Figure #2). Prior to drilling out intermediate casing, test BOPE and casing to 1500 psi for 30 minutes.

From surface to 7" TD - a choke manifold will be installed in accordance with Onshore Order No. 2 (Reference Figure #3). When the cavitation completion rig drills the production hole, the completion rig configuration will be used (Reference Figure #4). ~~Choke manifold will be installed during operations.~~

Wellhead Equipment: 9 5/8" x 7" x 2 3/8" x 11" 2000 psi xmas tree assembly.

General -

- Pipe rams will be actuated once each day and blind rams will be actuated once each trip to test proper functioning.
- An upper kelly cock valve with handle available and drill string valves to fit each drill string will be available on the rig floors at all times.
- BOP pit level drill will be conducted weekly for each drilling crew.
- All BOP tests and drills will be recorded in daily drilling reports.
- Blind and pipe rams will be equipped with extension hand wheels.

Cementing:

9 5/8" surface casing Pre-Set ~~100# (113cf) @ 1.28 yield~~ 14.5 ppg. 1.161 #/sx (Bring cement to surface). Wait on cement for 24 hours for pre-set holes before pressure testing or drilling out from under surface.

9 5/8" surface casing Conventionally w/88sx (113cf) @ 1.28 yield. Cement with Type III cement with 0.25 pps Celloflake, 3% calcium chloride. (200% excess, bring cement to surface). Wait on cement appropriate time until cement achieves 250 psi compressive strength at 60 degrees F. prior to nipple up of BOPE. Wait on cement for 8 hrs for conventionally set holes before pressure testing or drilling out from under surface. Test casing to 600 psi for 30 minutes.

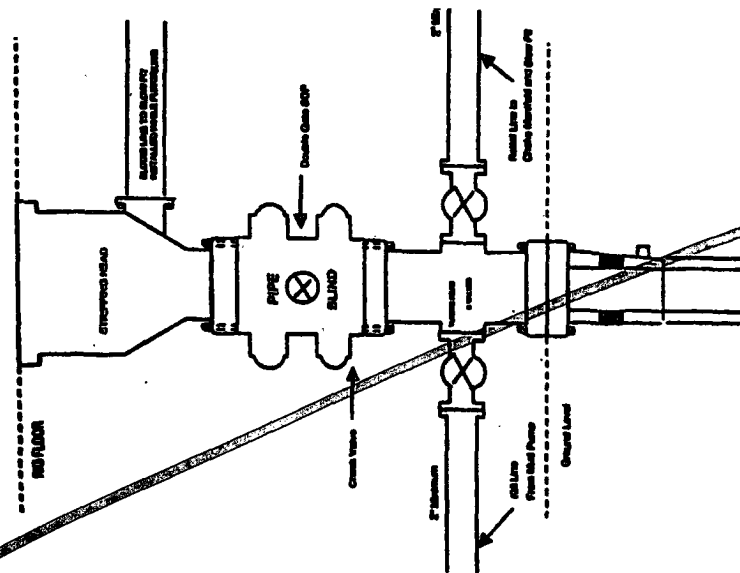
Saw tooth guide shoe on bottom. Bowspring centralizers will be run in accordance with Onshore Order #2.

7" intermediate casing w/356sx (760cf) @ 2.13 yield. Lead with Premium Lite HS FM w/3% CaCl₂, 0.25#/sx Floccelle, 5#/sx LCM-1, 0.4% FL-52 & 0.4% SMS (50% excess to circulate to surface). WOC minimum of 8 hours before drilling out intermediate casing. If cement does not circulate to surface, a CBL or a temperature survey will be run to determine TOC. Test casing to 1500 psi for 30 minutes.

Cement nose guide shoe on bottom with float collar spaced on top of shoe joint. Bowspring centralizers spaced every other joint off bottom, to the base of the Ojo Alamo. Two turbolating centralizers at the base of the Ojo Alamo. Bowspring centralizers spaced every fourth joint from the base of the Ojo Alamo to the base of the surface casing.

BURLINGTON RESOURCES

Completion/Workover Rig
BOP Configuration
2,000 psi System



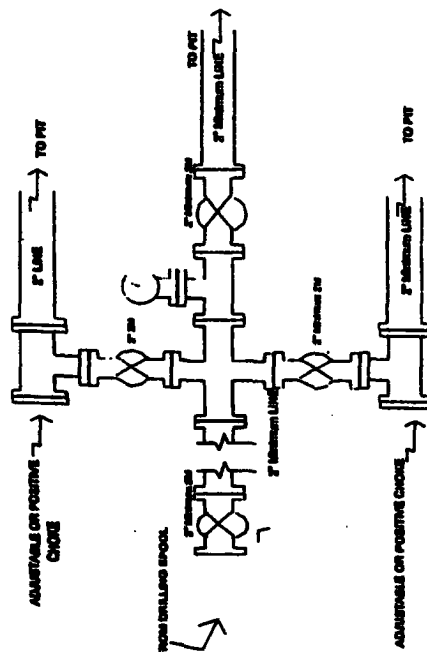
Minimum BOP installation for all Completion/Workover Operations. 7-1/16" bore, 2000 psi minimum working pressure double gate BOP to be equipped with blind and pipe rams. A stripping head to be installed on the top of the BOP. All BOP equipment is 2000 psi working pressure or greater excluding 500 psi stripping head.

Figure #2

4-20-01

BURLINGTON RESOURCES

Drilling Rig
Choke Manifold Configuration
2000 psi System



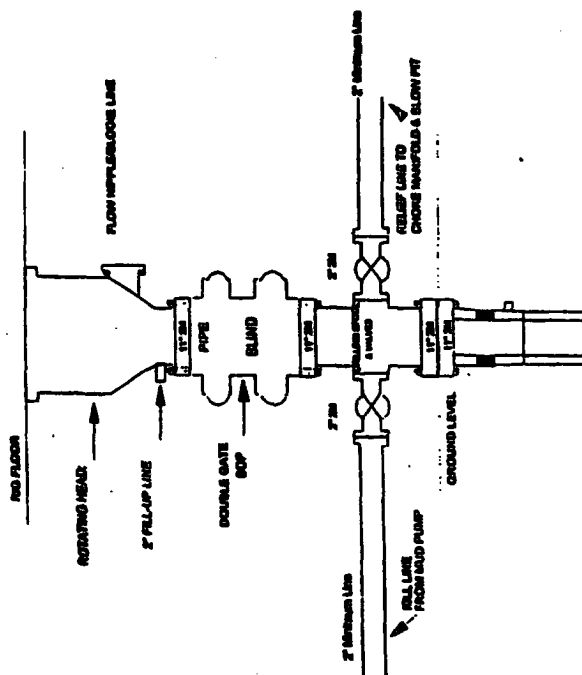
Choke manifold installation from Surface Casing Point to Total Depth. 2,000psi working pressure equipment with two chokes.

Figure #3

4-20-01

Burlington Resources

Drilling Rig
2000 psi System



BOP installation from Surface Casing Point to Total Depth. 11" Bore 10" Minimum Working Pressure Double Gate BOP to be equipped with blind and pipe rams. A 500 psi stripping head on top of the BOP. All BOP equipment is 2,000 psi working pressure or greater excluding 500 psi stripping head.

Figure #1

BURLINGTON RESOURCES

Figure #4
Cavitation Rig
BOP Configuration
2,000 psi Minimum System

