

FORM 1000-7  
(August 1999)

UNITED STATES  
DEPARTMENT OF THE INTERIOR  
BUREAU OF LAND MANAGEMENT

WELL COMPLETION OR RECOMPLETION REPORT AND LOG

FORM APPROVED  
OMB NO. 1004-0137  
Expires: November 30, 2000

1a. Type of Well ☐ Oil Well ☒ Gas Well ☐ Dry ☐ Other

b. Type of Completion ☐ New Well ☐ Work Over ☐ Deepen ☐ Plug Back ☐ Diff. Resvr.

Other

2. Name of Operator

ConocoPhillips Company

3. Address

5525 Highway 64 Farmington NM 87401

3.a Phone No. (Include area code)  
(505)599-3419

4. Location of Well (Report location clearly and in accordance with Federal requirements)\*

At Surface 2321' FSL & 2485' FEL Sec. 7 T31N R7W

At top prod. interval reported below

At total depth 2402' FSL & 3393' FEL Sec. 7 T31N R7W

14. Date Spudded

07/09/2005

15. Date T.D. Reached

07/31/2005

16. Date Completed

☐ D & A ☒ Ready to Prod.  
08/20/2005

18. Total Depth: MD 3562  
TVD 3562

19. Plug Back T.D.: MD 3553  
TVD 3553

20. Depth Bridge Plug Set: MD  
TVD

21. Type of Electric & Other Mechanical Logs Run (Submit copy of each)  
Mud Logs

22. Was well cored? ☒ No ☐ Yes (Submit analysis)  
Was DST run? ☒ No ☐ Yes (Submit analysis)  
Directional Survey? ☐ No ☒ Yes (Submit copy)

23. Casing and Liner Record (Report all strings set in well)

Hole Size	Size/Grade	Wt. (#/ft.)	Top (MD)	Bottom (MD)	Stage Cementer Depth	No. of Sk. & Type of Cement	Slurry Vol. (BBL)	Cement Top*	Amount Pulled
12.25	9.625H-40	32.3	0	234		150 Class G		0	5 bbl
8.75	7.0 J-55	23.0	0	3108		460 Stand.		0	60 bbl
6.25	5.5 Liner	15.5	3075	3554		0			

24. Tubing Record

Size	Depth Set (MD)	Packer Depth (MD)	Size	Depth Set (MD)	Packer Depth (MD)	Size	Depth Set (MD)	Packer Depth (MD)
2.375	3430'							

25. Producing Intervals

26. Perforation Record

Formation	Top	Bottom	Perforated Interval	Size	No. Holes	Perf. Status
A) Basin Fruitland Coal	3166	3366	3166-3366	.75	232	Open
B)						
C)						
D)						

27. Acid, Fracture, Treatment, Cement Squeeze, Etc.

Depth Interval	Amount and Type of Material
	Underreamed hole from 6.25" to 9.5" from 3113' to 3562'. This well is cavitated.

28. Production - Interval A

Date First Produced	Test Date	Hours Tested	Test Production	Oil BBL	Gas MCF	Water BBL	Oil Gravity Corr. API	Gas Gravity	Production Method
3/20/05	8/19/05	1	→	0	1236	0			Gas Pumping Unit
Choice Size	Tbg. Press. Flwg.	Csg. Press.	24 Hr. Rate	Oil BBL	Gas MCF	Water BBL	Gas : Oil Ratio	Well Status	
2" Pitot	SI n/a	16 psi	→					Gas Well Shut-in	

Production - Interval B

Date First Produced	Test Date	Hours Tested	Test Production	Oil BBL	Gas MCF	Water BBL	Oil Gravity Corr. API	Gas Gravity	Production Method
			→						
Choke Size	Tbg. Press. Flwg.	Csg. Press.	24 Hr. Rate	Oil BBL	Gas MCF	Water BBL	Gas : Oil Ratio	Well Status	
	SI		→						

See Instructions and spaces for additional data on reverse side)

5. Lease Serial No.  
NMSF078996

6. If Indian, Allottee or Tribe Name

7. Unit or CA Agreement Name and no.

8. Lease Name and Well No.  
SAN JUAN 32-7 UNIT 228A

9. API Well No.  
30-045-32930

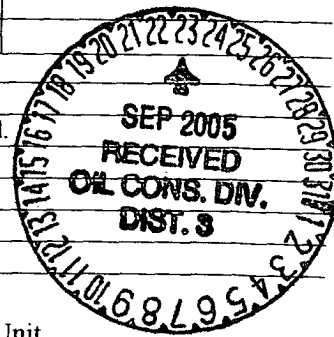
10. Field and Pool, or Exploratory  
BASIN FRUITLAND COAL

11. Sec., T., R., M., on Block and Survey or Area J Sec. 7 Twn: 31N

12. County or Parish  
SAN JUAN

13. State  
NM

17. Elevations (DF, RKB, RT, GL)\*  
6410 GL



ACCEPTED FOR RECORD

SEP 21 2005

FARMINGTON FIELD OFFICE  
BY *JB*

NMOCD

## 28b. Production - Interval C

Date First Produced	Test Date	Hours Tested	Test Production	Oil BBL	Gas MCF	Water BBL	Oil Gravity Corr. API	Gas Gravity	Production Method
			→						
Choke Size	Tbg. Press. Flwg. SI	Csg. Press.	24 Hr. Rate	Oil BBL	Gas MCF	Water BBL	Gas : Oil Ratio	Well Status	
			→						

## 28c. Production - Interval D

Date First Produced	Test Date	Hours Tested	Test Production	Oil BBL	Gas MCF	Water BBL	Oil Gravity Corr. API	Gas Gravity	Production Method
			→						
Choke Size	Tbg. Press. Flwg. SI	Csg. Press.	24 Hr. Rate	Oil BBL	Gas MCF	Water BBL	Gas : Oil Ratio	Well Status	
			→						

## 29. Disposition of Gas (Sold, used for fuel, vented, etc.)

Sold

## 30. Summary of Porous Zones (Include Aquifers):

Show all important zones or porosity and contents thereof: Cored intervals and all drill-stem tests, including depth interval tested, cushion used, time tool open, flowing and shut-in pressures and recoveries.

## 31. Formation (Log) Markers

Formation	Top	Bottom	Descriptions, Contents, etc.	Name	Top Meas. Depth
				NACIAMENTO	1113
				Ojo Alamo	2153
				Kirtland	2253
				Fruitland	2903
				Top Coal MD	3127
				B Main Coal MD	3196

## 32. Additional remarks (include plugging procedure):

This well is a single well producing from the Basin Fruitland Coal. Attached is the Wellbore Schematic and the Daily Summaries.

## 33. Circle enclosed attachments:

1. Electrical/Mechanical Logs (1 full set req'd.)    2. Geological Report    3. DST Report    4. Directional Survey  
5. Sundry Notice for plugging and cement verification    6. Core Analysis    7. Other

## 34. I hereby certify that the foregoing and attached information is complete and correct as determined from all available records (see attached instructions)\*

Name (please print) Juanita FarrellTitle Regulatory AnalystSignature Juanita FarrellDate 09/02/2005

Title 18 U.S.C. Section 101 and Title 43 U.S.C. Section 1212, make it a crime for any person knowingly and willfully to make to any department or agency of the United States and false, fictitious or fraudulent statements or representations as to any matter within its jurisdiction.

# Regulatory Summary

ConocoPhillips

SAN JUAN 32 7 UNIT #228A

## INITIAL COMPLETION, 7/28/2005 07:00

API/Bottom UWI	County	State/Province	Surface Legal Location	N/S Dist (ft)	N/S Ref	E/W Dist (ft)	E/W Ref
30-045-32930	San Juan	NEW MEXICO	NMPM-31N-07W-07-J	2,321.00	S	2,485.00	E
Ground Elevation (ft)	Latitude (DMS)	Longitude (DMS)	Spud Date	Rig Release Date			
6,410.00	36° 54' 47.0592" N	107° 36' 43.2648" W	7/9/2005	7/16/2005			

## 7/28/2005 07:00 - 7/28/2005 08:00

### Last 24hr Summary

CLOSET HELI-PAD IS 1/2 MILE SOUTH OF THIS LOCATION. MOVED RIG FROM THE SAN JUAN 32 FED 14 #1-A, APPROXIMATELY 80 MILE MOVE. MOVED TO THE SAN JUAN 32-7 #228A SECTION 7 - T31N - R7W 2321' FSL & 2485' FEL SAN JUAN COUNTY, NEW MEXICO NOTIFIED SEAN WASHBURN GRAZING LESSEE THAT RIG IS MOVING ON THIS LOCATION.

## 7/29/2005 07:00 - 7/29/2005 07:00

### Last 24hr Summary

RIG UP, NIPPLE UP BLOOE LINES, PRESSURE TEST BOPS

## 7/30/2005 07:00 - 7/30/2005 16:00

### Last 24hr Summary

PICK UP DC & DP, TEST AIR LINE, AIR MANIFOLD, DRLG FC, CEMENT AND SHOE.

## 7/31/2005 07:00 - 8/1/2005 06:00

### Last 24hr Summary

DRILL OUT, FLOW AND SHUT IN TEST, UNDER REAM

## 8/1/2005 06:00 - 8/2/2005 06:00

### Last 24hr Summary

UNDER REAM, FLOW AND SHUT IN TEST.

## 8/2/2005 06:00 - 8/3/2005 06:00

### Last 24hr Summary

SURGE, R&R CLEAN OUT.

## 8/3/2005 06:00 - 8/4/2005 06:00

### Last 24hr Summary

SURGE, R&R CLEAN OUT.

## 8/4/2005 06:00 - 8/5/2005 06:00

### Last 24hr Summary

SURGE, R&R CLEAN OUT.

## 8/5/2005 06:00 - 8/6/2005 06:00

### Last 24hr Summary

R&R CLEAN OUT.

## 8/6/2005 06:00 - 8/7/2005 06:00

### Last 24hr Summary

R&R CLEAN OUT.

## 8/7/2005 06:00 - 8/8/2005 06:00

### Last 24hr Summary

R&R CLEAN OUT.

## 8/8/2005 06:00 - 8/9/2005 06:00

### Last 24hr Summary

R&R CLEAN OUT.

## 8/9/2005 06:00 - 8/10/2005 06:00

### Last 24hr Summary

R&R CLEAN OUT.

## 8/10/2005 06:00 - 8/11/2005 06:00

### Last 24hr Summary

R&R CLEAN OUT.

## 8/11/2005 06:00 - 8/12/2005 06:00

### Last 24hr Summary

R&R CLEAN OUT, SURGE.

## 8/12/2005 06:00 - 8/13/2005 06:00

### Last 24hr Summary

R&R CLEAN OUT.

## 8/13/2005 06:00 - 8/14/2005 06:00

### Last 24hr Summary

R&R CLEAN OUT.

## 8/14/2005 06:00 - 8/15/2005 06:00

### Last 24hr Summary

R&R CLEAN OUT.

## 8/15/2005 06:00 - 8/16/2005 06:00

### Last 24hr Summary

FLOW TEST, NATURAL SURGE.

## 8/16/2005 06:00 - 8/17/2005 06:00

### Last 24hr Summary

NATURAL SURGE, CLEAN OUT

# Regulatory Summary

ConocoPhillips

SAN JUAN 32 7 UNIT #228A

8/17/2005 06:00 - 8/18/2005 06:00

Last 24hr Summary

CLEAN OUT, CIRC AND COND, TRIP OUT TO RUN LINER.

8/18/2005 06:00 - 8/19/2005 20:30

Last 24hr Summary

RUN LINER, LDDP & DC

8/19/2005 07:00 - 8/20/2005 00:00

Last 24hr Summary

PERFORATE, RUN AND LAND TUBING.

NIPPLE DOWN BOPS, NIPPLE UP WELL HEAD.

8/20/2005 07:00 - 8/21/2005 17:00

Last 24hr Summary

RUN AND LAND RODS, RIG DOWN

**END OF WELL SCHEMATIC**Well Name: San Juan 32-7 #228AAPI #: 30-045-32930Location: 2321' FSL & 2485' FELSec. 7 - T31N - R7WSan Juan County, NMElevation: 6410' GL (above MSL)Drl Rig RKB: 13' above Ground LevelDatum: Drl Rig RKB = 13' above GLPatterson Rig: #747Spud: 9-Jul-05Spud Time: 1:30Release Drl Rig: 16-Jul-05Time Release Rig: 16:00Move In Cav Rig: 28-Jul-05Release Cav Rig: 20-Aug-05

Note - this well is equipped with rods &amp; pump

7-<sup>1</sup>/<sub>16</sub>" 3M x 2-<sup>3</sup>/<sub>8</sub>" EUE 8rd Bonnet

11" 3M x 7-1/16" 3M Tubing Head

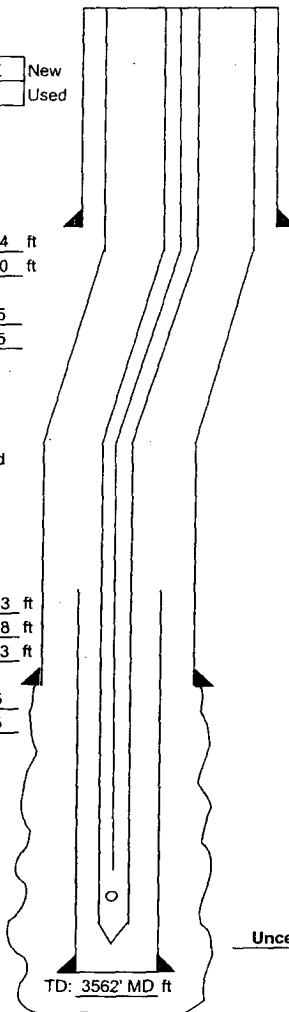
9-5/8" 8 RD x 11" 3M Casing Head

**Surface Casing**Date set: 9-Jul-05☒ New  
☐ UsedSize 9 5/8 inSet at 234 ft # Jnts: 5Wt. 32.3 ppf Grade H-40Hole Size 12 1/4 in Conn STCExcess Cmt 125 %T.O.C. SURFACECsg Shoe 234 ftTD of 12-1/4" hole 240 ftNotified BLM @ \_\_\_\_\_ hrs on 07-Jul-05Notified NMOCD @ \_\_\_\_\_ hrs on 07-Jul-05**Intermediate Casing**Date set: 16-Jul-05☒ New  
☐ UsedSize 7 inSet at 3108 ft 73 jtsWt. 23 ppf Grade J-55Hole Size 8 3/4 in Conn LTCExcess Cmt 160 % Top of Float Collar 3063 ftT.O.C. SURFACE Bottom of Casing Shoe 3108 ftPup @ \_\_\_\_\_ ft TD of 8-3/4" Hole 3113 ft

Pup @ \_\_\_\_\_ ft

Notified BLM @ 16:30 hrs on 14-Jul-05Notified NMOCD @ 16:30 hrs on 14-Jul-05**Production Liner**Date set: 18-Aug-05Size 5 1/2 inNominal Wt. 15.5 ppfGrade J-55# Jnts: 11Hole Size 6.25/9.5 inches

Underreamed 6-1/4" hole to 9.5" from 3113' to 3562'

Top of Liner 3075 ftPBSD 3553 ftBottom of Liner 3554 ft**Surface Cement**Date cmt'd: 9-Jul-05Lead : 150 sx Class G Cement+ 2% BWOC S001 Calcium Chloride+ 0.25 lb/sx D029 Cellophane Flakes1.16 cuft/sx, 174.0 cuft slurry at 15.8 ppgDisplacement: 15.0 bbls fresh wtrBumped Plug at: 14:45 hrs w/ 206 psiFinal Circ Press: 92 psi @ 2.0 bpmReturns during job: YESCMT Returns to surface: 5 bblsFloats Held: No floats usedW.O.C. for 6.00 hrs (plug bump to start NU BOP)W.O.C. for 11.00 hrs (plug bump to test csg)**Intermediate Cement**Date cmt'd: 16-Jul-05Lead : 360 sx Standard Cement+ 3% Econolite+ 0.25 lb/sx Flocele+ 10 lb/sx Gilsonite2.91 cuft/sx, 1047.6 cuft slurry at 11.5 ppgTail : 100 sx 50/50 POZ : Standard cement+ 2% Bentonite+ 2% Calcium Chloride+ 5 lb/sx Gilsonite+ 0.25 lb/sx Flocele1.33 cuft/sx, 133 cuft slurry at 13.5 ppgDisplacement: 120.5 bblsBumped Plug at: 06:45 hrs w/ 1125 psiFinal Circ Press: 640 psi @ 2 bpmReturns during job: YESCMT Returns to surface: 60 bblsFloats Held: X Yes No**Uncemented Liner**Schematic prepared by:  
Aaron Fuhr, Development Engineer  
26-Aug-2005**COMMENTS:**

9-5/8" Surf:	No float equipment was run. Ran a guide shoe and an aluminum baffle plate 1 jt above the guide shoe @ 189'. Displaced top wiper plug with water. Shut in casing head and WOC before backing out landing jt. CENTRALIZERS @ 224, 146', 102' & 59'. Total: 4
7" Intermediate	DISPLACED W/ 120.5 BBLs. 8.4 PPG SLIGHTLY POLYMERIZED DRILL WATER TR-1 CENTRALIZERS @ 3098', 2978', 2893', 2807', 2721', 2636', 2550', 2464', 459', 375', 291', 207', 80' & 38'. Total: 14
	TURBOLIZERS @ 2421', 2378', 2335' & 2292' Total: 4
5.5" Liner	Ran 6 1/16" OD Bladed shoe with float valve on bottom of liner. Ran and set the liner w/ TIW H-Latch Drop Off Tool (no liner hanger).
Perforations	Perforated 5-1/2" liner with guns on E-line at 4 spf, 0.75" diameter, 120 degree phased holes Perf. Intervals: 3166' - 3172', 3190' - 3196', 3264' - 3278', 3284' - 3294', 3312' - 3320', 3346' - 3358', 3364' - 3366'. Total 232 holes
Tubing	1 1/2" notched collar, 1 1/2" female nipple, and 1 1/2" x 2" swedge mud anchor with 1/2" hole below collar, attached below 32.88' x 2 3/8" 8RD EUE Box using 1 1/2" x 2 3/8" XO. 2 3/8" OD (1.78" ID) female nipple (containing blanking plug) follows, below 2 3/8" x 8" and 10' pup joints and 107 jts 2 3/8" EUE 8RD 4.7 ppf J-55 tubing. Bottom of Mud Anchor at 3430'. Top of F-Nipple at 3395' MD RKB.
Pump & Rods	12" strainer attached below 2" x 1-1/4" x 12" RHAC-80V insert pump, 4 each 1 1/4" x 25' sinker bars, 131 each 3/4" Norris, Type 78, API Grade "D" guided rods. 5 guides per rod. Ran 1 1/4" x 22' Polished rod with 2' pony rod on top. Set pump in F-Nipple at 3395' RKB.